



Full wwPDB EM Validation Report ⓘ

Nov 9, 2022 – 09:25 AM JST

PDB ID : 6IRH
EMDB ID : EMD-9717
Title : Structure of the human GluN1/GluN2A NMDA receptor in the glutamate/glycine-bound state at pH 6.3, Class III
Authors : Zhang, J.; Chang, S.; Zhang, X.; Zhu, S.
Deposited on : 2018-11-12
Resolution : 7.80 Å (reported)
Based on initial models : 5TQ0, 4PE5, 5H8F

This is a Full wwPDB EM Validation Report for a publicly released PDB entry.

We welcome your comments at validation@mail.wwpdb.org

A user guide is available at

<https://www.wwpdb.org/validation/2017/EMValidationReportHelp>

with specific help available everywhere you see the ⓘ symbol.

The types of validation reports are described at

<http://www.wwpdb.org/validation/2017/FAQs#types>.

The following versions of software and data (see [references ⓘ](#)) were used in the production of this report:

EMDB validation analysis : 0.0.1.dev43
MolProbity : 4.02b-467
Percentile statistics : 20191225.v01 (using entries in the PDB archive December 25th 2019)
MapQ : 1.9.9
Ideal geometry (proteins) : Engh & Huber (2001)
Ideal geometry (DNA, RNA) : Parkinson et al. (1996)
Validation Pipeline (wwPDB-VP) : 2.31.2

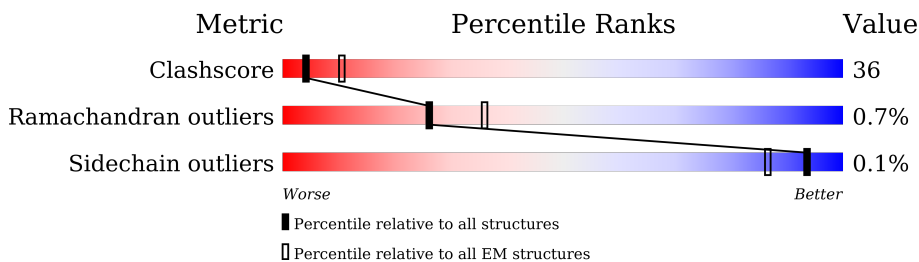
1 Overall quality at a glance

The following experimental techniques were used to determine the structure:

ELECTRON MICROSCOPY

The reported resolution of this entry is 7.80 Å.

Percentile scores (ranging between 0-100) for global validation metrics of the entry are shown in the following graphic. The table shows the number of entries on which the scores are based.



Metric	Whole archive (#Entries)	EM structures (#Entries)
Clashscore	158937	4297
Ramachandran outliers	154571	4023
Sidechain outliers	154315	3826

The table below summarises the geometric issues observed across the polymeric chains and their fit to the map. The red, orange, yellow and green segments of the bar indicate the fraction of residues that contain outliers for ≥ 3 , 2, 1 and 0 types of geometric quality criteria respectively. A grey segment represents the fraction of residues that are not modelled. The numeric value for each fraction is indicated below the corresponding segment, with a dot representing fractions $\leq 5\%$. The upper red bar (where present) indicates the fraction of residues that have poor fit to the EM map (all-atom inclusion $< 40\%$). The numeric value is given above the bar.

Mol	Chain	Length	Quality of chain
1	A	847	
1	C	847	
2	B	841	
2	D	841	

2 Entry composition [i](#)

There are 2 unique types of molecules in this entry. The entry contains 23937 atoms, of which 0 are hydrogens and 0 are deuteriums.

In the tables below, the AltConf column contains the number of residues with at least one atom in alternate conformation and the Trace column contains the number of residues modelled with at most 2 atoms.

- Molecule 1 is a protein called Glutamate receptor ionotropic, NMDA 1.

Mol	Chain	Residues	Atoms					AltConf	Trace
			Total	C	N	O	S		
1	C	786	Total	C	N	O	S	0	0
			6156	3922	1069	1130	35		
1	A	785	Total	C	N	O	S	0	0
			6149	3917	1068	1129	35		

There are 2 discrepancies between the modelled and reference sequences:

Chain	Residue	Modelled	Actual	Comment	Reference
C	612	ARG	GLY	engineered mutation	UNP Q05586
A	612	ARG	GLY	engineered mutation	UNP Q05586

- Molecule 2 is a protein called Glutamate receptor ionotropic, NMDA 2A.

Mol	Chain	Residues	Atoms					AltConf	Trace
			Total	C	N	O	S		
2	D	756	Total	C	N	O	S	1	0
			5816	3759	954	1067	36		
2	B	756	Total	C	N	O	S	1	0
			5816	3759	954	1067	36		

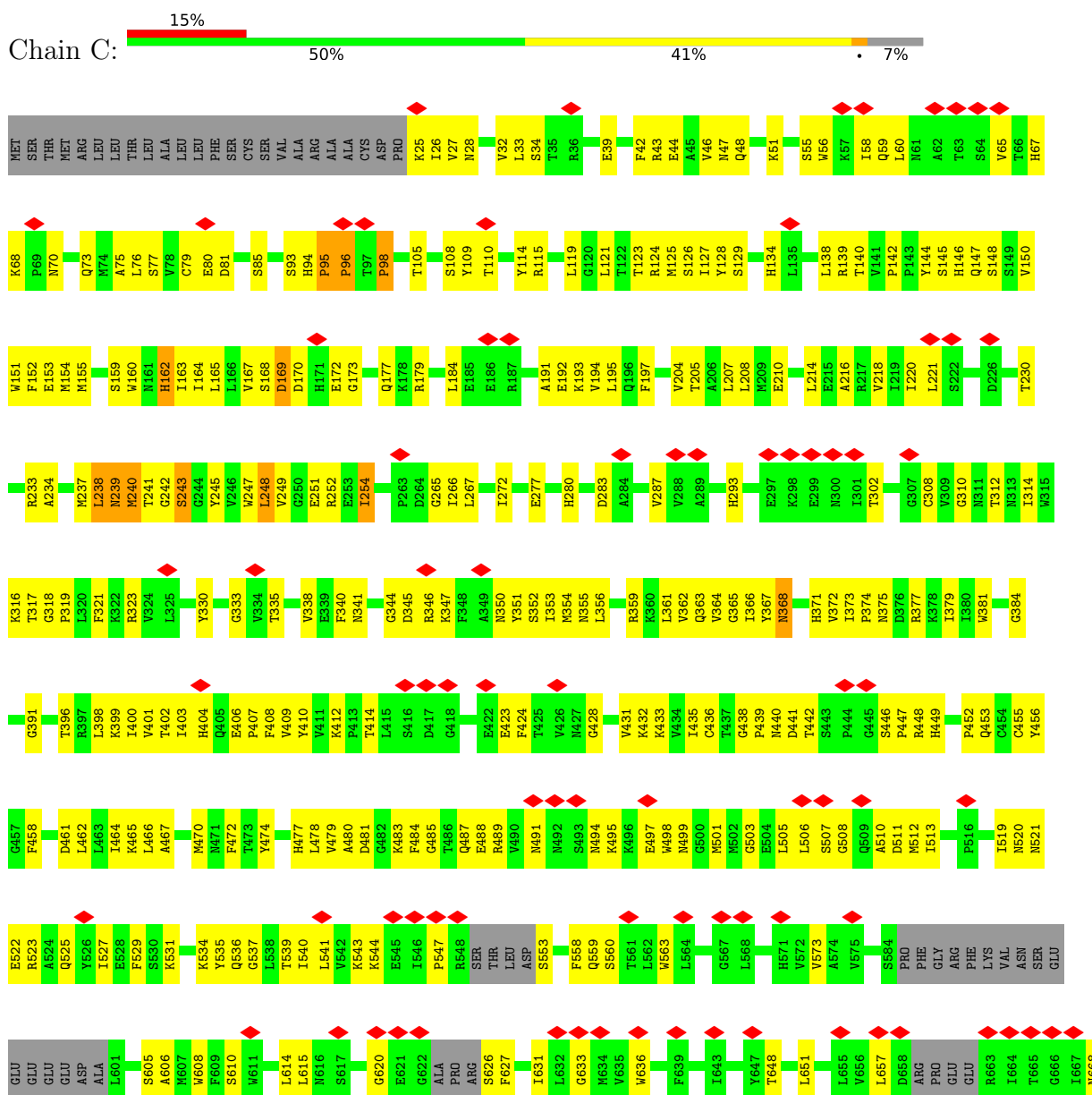
There are 4 discrepancies between the modelled and reference sequences:

Chain	Residue	Modelled	Actual	Comment	Reference
D	656	ARG	GLU	engineered mutation	UNP Q12879
D	657	ARG	GLU	engineered mutation	UNP Q12879
B	656	ARG	GLU	engineered mutation	UNP Q12879
B	657	ARG	GLU	engineered mutation	UNP Q12879

3 Residue-property plots

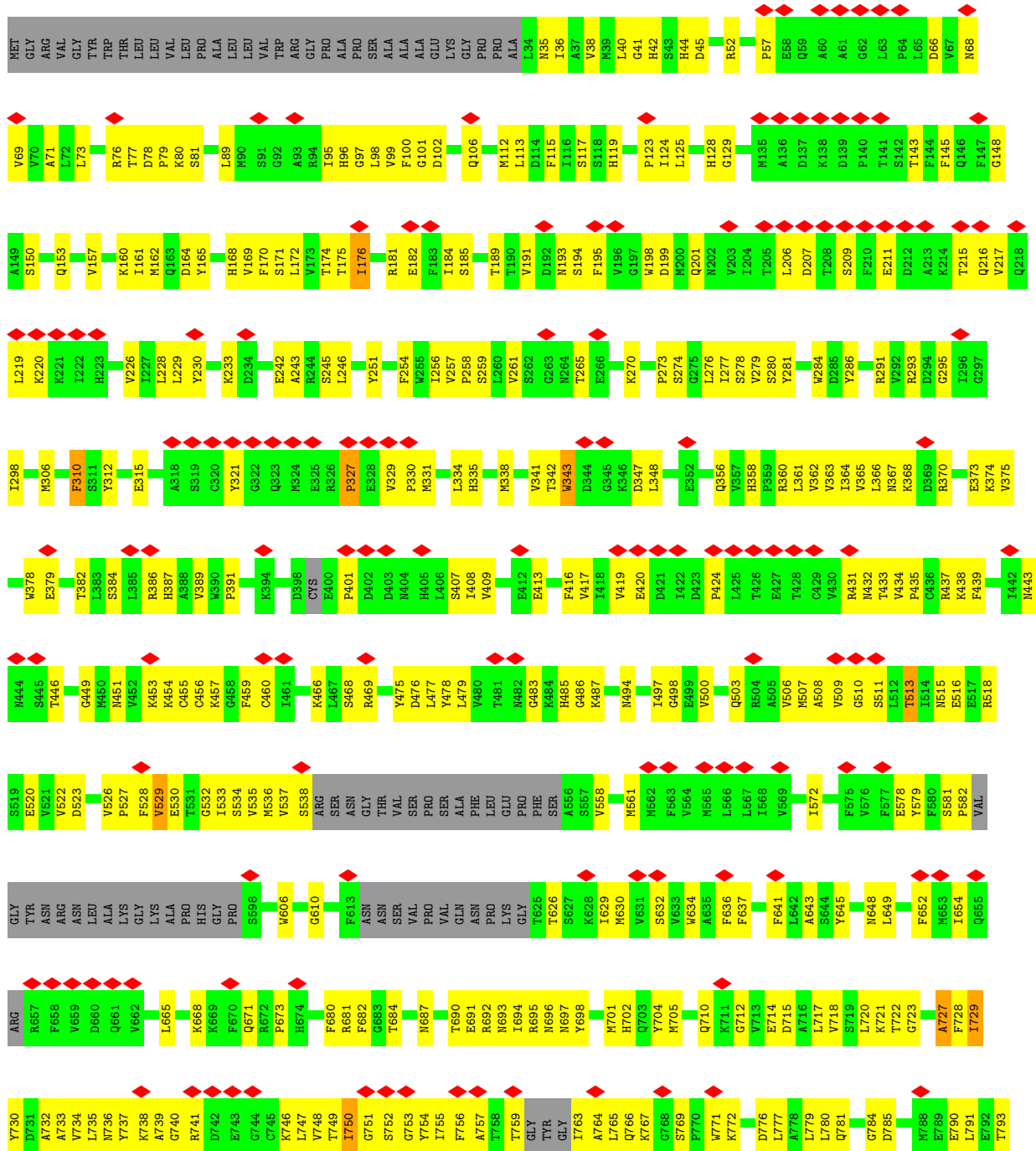
These plots are drawn for all protein, RNA, DNA and oligosaccharide chains in the entry. The first graphic for a chain summarises the proportions of the various outlier classes displayed in the second graphic. The second graphic shows the sequence view annotated by issues in geometry and atom inclusion in map density. Residues are color-coded according to the number of geometric quality criteria for which they contain at least one outlier: green = 0, yellow = 1, orange = 2 and red = 3 or more. A red diamond above a residue indicates a poor fit to the EM map for this residue (all-atom inclusion < 40%). Stretches of 2 or more consecutive residues without any outlier are shown as a green connector. Residues present in the sample, but not in the model, are shown in grey.

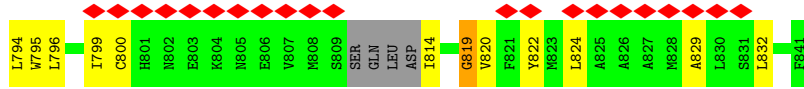
- Molecule 1: Glutamate receptor ionotropic, NMDA 1



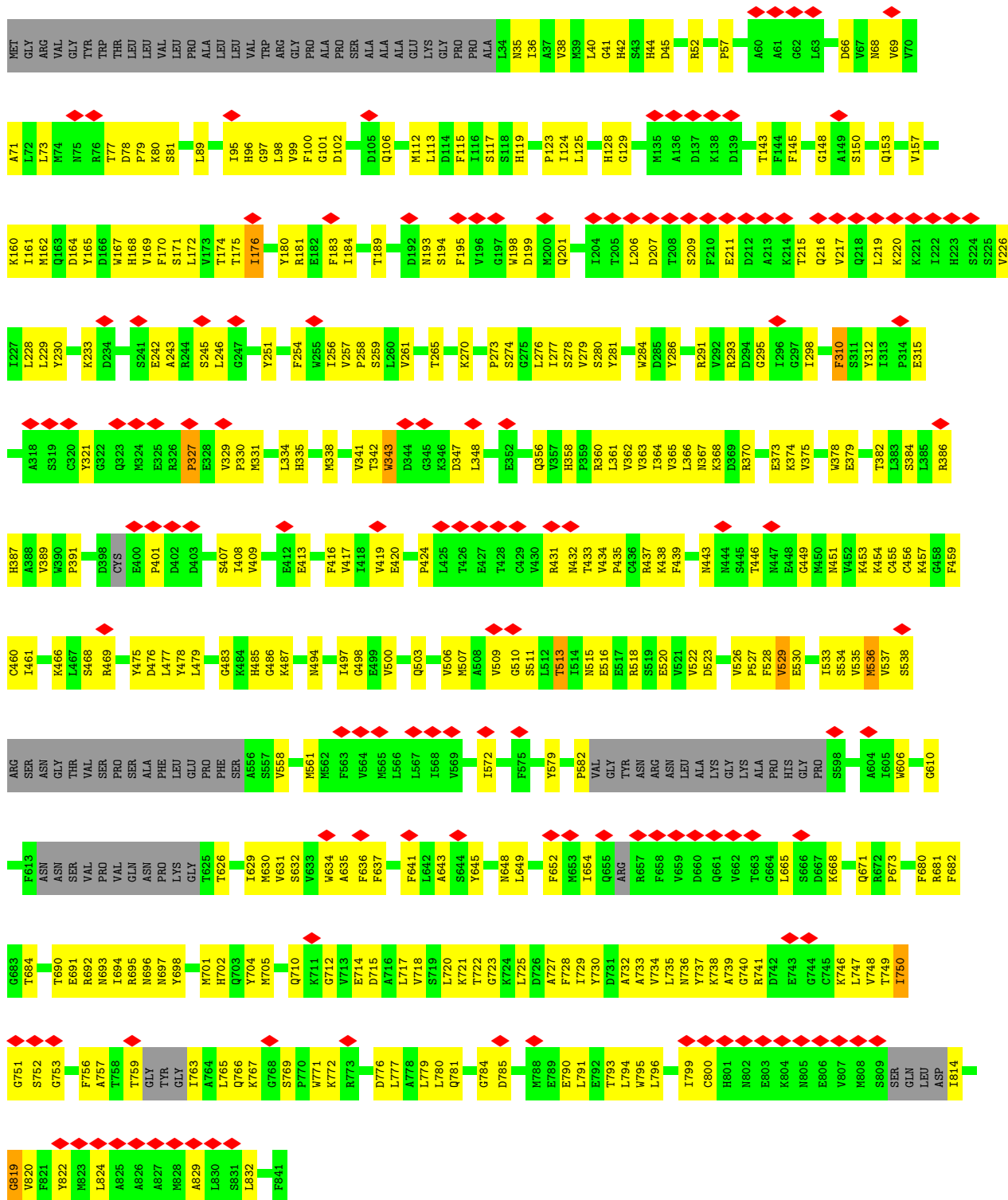


• Molecule 2: Glutamate receptor ionotropic, NMDA 2A





• Molecule 2: Glutamate receptor ionotropic, NMDA 2A



4 Experimental information

Property	Value	Source
EM reconstruction method	SINGLE PARTICLE	Depositor
Imposed symmetry	POINT, Not provided	
Number of particles used	86215	Depositor
Resolution determination method	FSC 0.143 CUT-OFF	Depositor
CTF correction method	PHASE FLIPPING AND AMPLITUDE CORRECTION	Depositor
Microscope	FEI TITAN KRIOS	Depositor
Voltage (kV)	300	Depositor
Electron dose ($e^-/\text{\AA}^2$)	56	Depositor
Minimum defocus (nm)	Not provided	
Maximum defocus (nm)	Not provided	
Magnification	Not provided	
Image detector	GATAN K2 SUMMIT (4k x 4k)	Depositor
Maximum map value	7.243	Depositor
Minimum map value	-1.433	Depositor
Average map value	0.048	Depositor
Map value standard deviation	0.746	Depositor
Recommended contour level	3.0	Depositor
Map size (Å)	242.4, 242.4, 242.4	wwPDB
Map dimensions	240, 240, 240	wwPDB
Map angles (°)	90.0, 90.0, 90.0	wwPDB
Pixel spacing (Å)	1.01, 1.01, 1.01	Depositor

5 Model quality i

5.1 Standard geometry i

The Z score for a bond length (or angle) is the number of standard deviations the observed value is removed from the expected value. A bond length (or angle) with $|Z| > 5$ is considered an outlier worth inspection. RMSZ is the root-mean-square of all Z scores of the bond lengths (or angles).

Mol	Chain	Bond lengths		Bond angles	
		RMSZ	# Z >5	RMSZ	# Z >5
1	A	0.53	0/6273	0.74	10/8483 (0.1%)
1	C	0.53	0/6282	0.74	10/8498 (0.1%)
2	B	0.50	2/5946 (0.0%)	0.71	9/8072 (0.1%)
2	D	0.49	1/5946 (0.0%)	0.71	11/8072 (0.1%)
All	All	0.52	3/24447 (0.0%)	0.73	40/33125 (0.1%)

Chiral center outliers are detected by calculating the chiral volume of a chiral center and verifying if the center is modelled as a planar moiety or with the opposite hand. A planarity outlier is detected by checking planarity of atoms in a peptide group, atoms in a mainchain group or atoms of a sidechain that are expected to be planar.

Mol	Chain	#Chirality outliers	#Planarity outliers
1	A	0	5
1	C	0	6
2	B	0	6
2	D	0	6
All	All	0	23

All (3) bond length outliers are listed below:

Mol	Chain	Res	Type	Atoms	Z	Observed(Å)	Ideal(Å)
2	B	536	MET	C-N	6.29	1.48	1.34
2	D	343	TRP	CB-CG	-6.15	1.39	1.50
2	B	343	TRP	CB-CG	-6.15	1.39	1.50

All (40) bond angle outliers are listed below:

Mol	Chain	Res	Type	Atoms	Z	Observed(°)	Ideal(°)
1	C	95	PRO	N-CA-CB	8.76	113.81	103.30
1	A	95	PRO	N-CA-CB	8.75	113.80	103.30
2	D	327	PRO	N-CA-CB	6.52	111.12	103.30
2	B	327	PRO	N-CA-CB	6.52	111.12	103.30
1	C	184	LEU	CA-CB-CG	6.45	130.13	115.30

Continued on next page...

Continued from previous page...

Mol	Chain	Res	Type	Atoms	Z	Observed(°)	Ideal(°)
1	A	184	LEU	CA-CB-CG	6.44	130.11	115.30
2	D	424	PRO	N-CA-CB	6.37	110.95	103.30
2	B	424	PRO	N-CA-CB	6.37	110.95	103.30
2	D	529	VAL	C-N-CA	-6.29	105.97	121.70
2	D	391	PRO	N-CA-CB	6.29	110.85	103.30
2	B	391	PRO	N-CA-CB	6.28	110.84	103.30
2	B	529	VAL	C-N-CA	-6.28	106.01	121.70
1	C	777	LEU	O-C-N	6.16	132.55	122.70
1	A	777	LEU	O-C-N	6.13	132.51	122.70
1	C	547	PRO	N-CA-CB	6.08	110.60	103.30
1	A	547	PRO	N-CA-CB	6.07	110.58	103.30
2	D	401	PRO	N-CA-CB	5.90	110.38	103.30
2	B	401	PRO	N-CA-CB	5.88	110.36	103.30
2	D	727	ALA	O-C-N	-5.81	113.41	122.70
1	A	169	ASP	CB-CG-OD1	-5.79	113.09	118.30
1	C	169	ASP	CB-CG-OD1	-5.76	113.12	118.30
1	A	96	PRO	N-CA-CB	5.73	110.18	103.30
1	C	96	PRO	N-CA-CB	5.72	110.16	103.30
2	D	330	PRO	N-CA-CB	5.62	110.04	103.30
2	B	330	PRO	N-CA-CB	5.61	110.03	103.30
1	A	98	PRO	N-CA-CB	5.56	109.97	103.30
1	C	98	PRO	N-CA-CB	5.53	109.94	103.30
1	C	777	LEU	CA-C-N	-5.52	105.05	117.20
1	A	777	LEU	CA-C-N	-5.51	105.07	117.20
2	B	57	PRO	N-CA-CB	5.48	109.87	103.30
2	D	57	PRO	N-CA-CB	5.45	109.84	103.30
2	B	343	TRP	CA-CB-CG	-5.29	103.65	113.70
2	D	343	TRP	CA-CB-CG	-5.29	103.65	113.70
2	D	729	ILE	O-C-N	5.22	131.05	122.70
2	B	176	ILE	CG1-CB-CG2	-5.11	100.16	111.40
2	D	176	ILE	CG1-CB-CG2	-5.11	100.17	111.40
1	A	254	ILE	CG1-CB-CG2	-5.09	100.19	111.40
1	C	254	ILE	CG1-CB-CG2	-5.08	100.23	111.40
1	A	238	LEU	C-N-CA	5.07	134.37	121.70
1	C	238	LEU	C-N-CA	5.06	134.35	121.70

There are no chirality outliers.

All (23) planarity outliers are listed below:

Mol	Chain	Res	Type	Group
1	A	162	HIS	Peptide
1	A	248	LEU	Peptide

Continued on next page...

Continued from previous page...

Mol	Chain	Res	Type	Group
1	A	353	ILE	Peptide
1	A	368	ASN	Peptide
1	A	491	ASN	Peptide
2	B	170	PHE	Peptide
2	B	251	TYR	Peptide
2	B	310	PHE	Peptide
2	B	331	MET	Peptide
2	B	44	HIS	Peptide
2	B	796	LEU	Peptide
1	C	162	HIS	Peptide
1	C	248	LEU	Peptide
1	C	353	ILE	Peptide
1	C	368	ASN	Peptide
1	C	381	TRP	Peptide
1	C	491	ASN	Peptide
2	D	170	PHE	Peptide
2	D	251	TYR	Peptide
2	D	310	PHE	Peptide
2	D	331	MET	Peptide
2	D	44	HIS	Peptide
2	D	796	LEU	Peptide

5.2 Too-close contacts

In the following table, the Non-H and H(model) columns list the number of non-hydrogen atoms and hydrogen atoms in the chain respectively. The H(added) column lists the number of hydrogen atoms added and optimized by MolProbity. The Clashes column lists the number of clashes within the asymmetric unit, whereas Symm-Clashes lists symmetry-related clashes.

Mol	Chain	Non-H	H(model)	H(added)	Clashes	Symm-Clashes
1	A	6149	0	6088	529	0
1	C	6156	0	6098	531	0
2	B	5816	0	5626	538	0
2	D	5816	0	5626	529	0
All	All	23937	0	23438	1715	0

The all-atom clashscore is defined as the number of clashes found per 1000 atoms (including hydrogen atoms). The all-atom clashscore for this structure is 36.

All (1715) close contacts within the same asymmetric unit are listed below, sorted by their clash magnitude.

Atom-1	Atom-2	Interatomic distance (Å)	Clash overlap (Å)
2:B:416:PHE:CE1	2:B:528:PHE:CE2	1.91	1.59
2:B:416:PHE:CD1	2:B:528:PHE:CZ	1.89	1.59
2:B:416:PHE:CD1	2:B:528:PHE:HZ	1.18	1.59
1:A:56:TRP:CB	1:A:59:GLN:HG3	1.31	1.58
1:C:56:TRP:CB	1:C:59:GLN:CG	1.81	1.58
2:D:534:SER:HB3	2:D:750:ILE:CG2	1.29	1.58
2:B:526:VAL:HG21	2:B:779:LEU:CD2	1.18	1.58
2:D:582:PRO:CG	1:A:839:ARG:HH22	1.07	1.58
1:A:56:TRP:CB	1:A:59:GLN:CG	1.81	1.57
2:D:416:PHE:CD1	2:D:528:PHE:HZ	1.18	1.57
2:D:526:VAL:HG21	2:D:779:LEU:CD2	1.18	1.57
1:C:839:ARG:HH22	2:B:582:PRO:CG	1.04	1.56
2:D:416:PHE:CD1	2:D:528:PHE:CZ	1.89	1.56
2:D:416:PHE:CE1	2:D:528:PHE:CE2	1.91	1.56
1:C:56:TRP:CB	1:C:59:GLN:HG3	1.31	1.56
2:B:534:SER:HB3	2:B:750:ILE:CG2	1.29	1.54
2:B:537:VAL:CG1	2:B:727:ALA:CB	1.80	1.53
1:C:817:PHE:CZ	2:B:561:MET:HB3	1.44	1.52
2:D:416:PHE:CZ	2:D:528:PHE:HE2	1.32	1.47
2:D:561:MET:HB3	1:A:817:PHE:CZ	1.47	1.47
2:D:534:SER:CB	2:D:750:ILE:HG21	1.44	1.44
1:C:521:ASN:CG	2:B:780:LEU:HB3	1.35	1.44
2:B:537:VAL:HG12	2:B:727:ALA:CB	0.99	1.44
2:B:416:PHE:CZ	2:B:528:PHE:HE2	1.32	1.43
2:B:534:SER:CB	2:B:750:ILE:HG21	1.44	1.43
1:C:521:ASN:ND2	2:B:780:LEU:CB	1.78	1.43
2:D:526:VAL:CG2	2:D:779:LEU:HD22	1.49	1.42
2:B:526:VAL:CG2	2:B:779:LEU:HD22	1.49	1.41
2:D:780:LEU:CB	1:A:521:ASN:ND2	1.83	1.40
2:D:780:LEU:HB3	1:A:521:ASN:ND2	1.10	1.38
1:C:839:ARG:NH2	2:B:582:PRO:HG2	1.08	1.38
2:B:537:VAL:CG1	2:B:727:ALA:HB2	1.39	1.38
2:D:582:PRO:HG2	1:A:839:ARG:NH2	1.08	1.38
2:D:629:ILE:HD11	1:A:608:TRP:CE2	1.56	1.37
2:B:630:MET:O	2:B:634:TRP:CE3	1.77	1.37
2:D:780:LEU:HB3	1:A:521:ASN:CG	1.39	1.37
1:C:531:LYS:CB	1:C:776:ILE:HD13	1.54	1.36
1:C:521:ASN:ND2	2:B:780:LEU:HB3	1.07	1.36
1:C:608:TRP:CE2	2:B:629:ILE:HD11	1.58	1.36
2:D:533:ILE:O	2:D:756:PHE:N	1.57	1.36
2:D:634:TRP:CZ2	1:A:824:ILE:CG1	2.08	1.36
2:B:533:ILE:O	2:B:756:PHE:N	1.57	1.36

Continued on next page...

Continued from previous page...

Atom-1	Atom-2	Interatomic distance (Å)	Clash overlap (Å)
1:C:824:ILE:CG1	2:B:634:TRP:CZ2	2.09	1.35
2:D:777:LEU:HA	1:A:521:ASN:OD1	1.27	1.35
1:A:531:LYS:CB	1:A:776:ILE:HD13	1.54	1.35
2:D:630:MET:O	2:D:634:TRP:CE3	1.77	1.34
2:D:526:VAL:CG2	2:D:779:LEU:CD2	2.03	1.34
2:B:536:MET:O	2:B:728:PHE:N	1.62	1.32
1:C:608:TRP:CE2	2:B:629:ILE:CD1	2.13	1.31
2:D:629:ILE:CD1	1:A:608:TRP:CE2	2.10	1.31
1:A:56:TRP:CB	1:A:59:GLN:CD	1.98	1.31
2:D:784:GLY:O	1:A:696:GLN:NE2	1.58	1.31
1:C:696:GLN:NE2	2:B:784:GLY:O	1.61	1.30
2:D:526:VAL:CG1	2:D:527:PRO:HD2	1.59	1.30
1:C:56:TRP:CB	1:C:59:GLN:CD	1.98	1.30
2:B:526:VAL:CG1	2:B:527:PRO:HD2	1.60	1.29
1:C:820:VAL:HG13	2:B:634:TRP:NE1	1.46	1.29
1:C:817:PHE:CZ	2:B:561:MET:CB	2.16	1.28
2:D:634:TRP:CZ2	1:A:824:ILE:HG12	1.66	1.28
2:B:526:VAL:HG12	2:B:527:PRO:CD	1.64	1.28
1:C:521:ASN:OD1	2:B:777:LEU:HA	1.30	1.28
2:D:645:TYR:OH	1:A:810:PHE:HE2	1.03	1.27
1:C:810:PHE:HE2	2:B:645:TYR:OH	0.99	1.26
1:A:773:SER:O	1:A:776:ILE:HG22	1.09	1.26
2:D:526:VAL:HG12	2:D:527:PRO:CD	1.64	1.26
1:C:521:ASN:HB2	2:B:780:LEU:CG	1.56	1.26
2:B:526:VAL:CG2	2:B:779:LEU:CD2	2.03	1.26
1:C:531:LYS:HB2	1:C:776:ILE:CD1	1.66	1.25
1:C:233:ARG:O	1:C:237:MET:HG2	1.11	1.25
2:D:561:MET:CB	1:A:817:PHE:CZ	2.18	1.25
1:A:233:ARG:O	1:A:237:MET:HG2	1.11	1.24
1:A:531:LYS:HB2	1:A:776:ILE:CD1	1.66	1.24
2:D:536:MET:O	2:D:728:PHE:N	1.70	1.23
2:D:634:TRP:NE1	1:A:820:VAL:HG13	1.51	1.23
2:D:537:VAL:O	2:D:748:VAL:N	1.70	1.23
1:C:535:TYR:CE2	2:B:759:THR:HG22	1.73	1.23
1:C:773:SER:O	1:C:776:ILE:HG22	1.10	1.23
2:B:537:VAL:O	2:B:748:VAL:N	1.70	1.23
1:C:521:ASN:CG	2:B:780:LEU:CB	2.01	1.22
2:D:561:MET:HB3	1:A:817:PHE:CE1	1.75	1.21
2:D:534:SER:O	2:D:729:ILE:HG23	1.38	1.21
2:B:534:SER:O	2:B:729:ILE:HG23	1.34	1.21
1:C:817:PHE:CE1	2:B:561:MET:HB3	1.76	1.21

Continued on next page...

Continued from previous page...

Atom-1	Atom-2	Interatomic distance (Å)	Clash overlap (Å)
2:D:629:ILE:HD11	1:A:608:TRP:CD2	1.76	1.21
2:D:629:ILE:HD13	1:A:608:TRP:NE1	1.55	1.21
2:D:780:LEU:CB	1:A:521:ASN:CG	2.06	1.21
1:C:608:TRP:NE1	2:B:629:ILE:HD13	1.56	1.20
1:C:521:ASN:HB2	2:B:780:LEU:CD2	1.72	1.20
2:D:516:GLU:HG2	1:A:777:LEU:CD1	1.72	1.19
1:C:777:LEU:CD1	2:B:516:GLU:HG2	1.71	1.19
1:C:824:ILE:HG12	2:B:634:TRP:CZ2	1.70	1.19
2:B:416:PHE:CE1	2:B:528:PHE:CZ	2.19	1.19
2:D:537:VAL:N	2:D:748:VAL:O	1.75	1.19
2:B:537:VAL:O	2:B:748:VAL:O	1.60	1.19
1:C:535:TYR:HE2	2:B:759:THR:CG2	1.56	1.18
2:D:537:VAL:O	2:D:748:VAL:O	1.60	1.18
2:D:416:PHE:CE1	2:D:528:PHE:CZ	2.19	1.17
1:C:839:ARG:CZ	2:B:582:PRO:HB2	1.74	1.17
2:B:537:VAL:CG1	2:B:727:ALA:HB1	1.58	1.17
2:B:537:VAL:N	2:B:748:VAL:O	1.75	1.17
1:C:608:TRP:CD2	2:B:629:ILE:HD11	1.78	1.17
2:D:416:PHE:CZ	2:D:528:PHE:CE2	2.21	1.17
2:D:538:SER:HA	2:D:747:LEU:HA	1.21	1.16
2:B:416:PHE:CZ	2:B:528:PHE:CE2	2.21	1.16
2:D:759:THR:HG22	1:A:535:TYR:CE2	1.78	1.16
2:D:780:LEU:CD2	1:A:521:ASN:HB2	1.75	1.16
1:C:521:ASN:CB	2:B:780:LEU:CB	2.22	1.16
1:C:521:ASN:CB	2:B:780:LEU:HB3	1.74	1.16
2:D:759:THR:HG21	1:A:780:HIS:CE1	1.81	1.16
1:A:773:SER:O	1:A:776:ILE:CG2	1.94	1.16
1:C:773:SER:O	1:C:776:ILE:CG2	1.94	1.15
1:C:813:MET:CE	2:B:558:VAL:HG13	1.77	1.15
1:C:816:VAL:HG11	2:B:641:PHE:CZ	1.80	1.15
2:B:534:SER:O	2:B:729:ILE:HA	1.46	1.15
2:D:780:LEU:HB3	1:A:521:ASN:CB	1.76	1.14
2:B:534:SER:O	2:B:729:ILE:CG2	1.95	1.14
2:D:780:LEU:CB	1:A:521:ASN:CB	2.26	1.14
1:C:780:HIS:CE1	2:B:759:THR:HG21	1.81	1.14
2:D:641:PHE:CZ	1:A:816:VAL:HG11	1.82	1.14
2:D:759:THR:CG2	1:A:535:TYR:HE2	1.61	1.14
2:D:558:VAL:HG13	1:A:813:MET:CE	1.77	1.13
2:D:780:LEU:CG	1:A:521:ASN:HB2	1.61	1.13
1:C:777:LEU:HB3	2:B:516:GLU:HB2	1.27	1.13
2:D:582:PRO:HB2	1:A:839:ARG:CZ	1.78	1.13

Continued on next page...

Continued from previous page...

Atom-1	Atom-2	Interatomic distance (Å)	Clash overlap (Å)
2:D:534:SER:O	2:D:729:ILE:HA	1.47	1.13
2:D:558:VAL:HG13	1:A:813:MET:HE2	1.18	1.13
2:D:634:TRP:CZ2	1:A:824:ILE:HG13	1.78	1.13
1:C:773:SER:O	1:C:777:LEU:HG	1.49	1.12
1:C:777:LEU:HD12	2:B:516:GLU:HG2	1.16	1.12
2:D:216:GLN:O	2:B:220:LYS:NZ	1.82	1.12
2:B:534:SER:CB	2:B:732:ALA:HB2	1.79	1.12
1:C:208:LEU:HB3	1:C:238:LEU:HD11	1.15	1.12
1:A:208:LEU:HB3	1:A:238:LEU:HD11	1.17	1.12
2:B:538:SER:HA	2:B:747:LEU:HA	1.21	1.11
2:D:534:SER:CB	2:D:732:ALA:HB2	1.79	1.11
1:A:26:ILE:HG12	1:A:58:ILE:HG22	1.32	1.11
1:C:839:ARG:NH2	2:B:582:PRO:CB	2.13	1.11
1:A:773:SER:O	1:A:777:LEU:HG	1.49	1.11
2:B:526:VAL:HG21	2:B:779:LEU:HD21	1.14	1.10
2:D:534:SER:HB3	2:D:750:ILE:HG23	1.31	1.10
1:C:520:ASN:HD22	1:C:523:ARG:CG	1.64	1.10
2:D:220:LYS:NZ	2:B:216:GLN:O	1.83	1.09
1:C:824:ILE:HG13	2:B:634:TRP:CZ2	1.76	1.09
2:D:534:SER:O	2:D:729:ILE:CG2	2.00	1.09
2:D:516:GLU:HG2	1:A:777:LEU:HD12	1.18	1.09
2:D:537:VAL:HG23	2:D:748:VAL:HB	1.32	1.08
1:A:520:ASN:HD22	1:A:523:ARG:CG	1.64	1.08
2:B:533:ILE:O	2:B:756:PHE:CA	2.01	1.08
2:B:534:SER:O	2:B:729:ILE:CA	2.01	1.08
1:C:26:ILE:HG12	1:C:58:ILE:O	1.52	1.08
1:C:521:ASN:ND2	2:B:780:LEU:CA	2.17	1.08
1:C:521:ASN:HB2	2:B:780:LEU:CB	1.80	1.08
1:C:817:PHE:HZ	2:B:561:MET:CB	1.58	1.08
2:D:516:GLU:HB2	1:A:777:LEU:HB3	1.26	1.08
1:A:520:ASN:HD22	1:A:523:ARG:HG3	1.11	1.08
2:D:533:ILE:O	2:D:756:PHE:CA	2.01	1.07
2:D:526:VAL:HG21	2:D:779:LEU:HD21	1.14	1.07
2:B:537:VAL:HG23	2:B:748:VAL:HB	1.31	1.07
2:B:537:VAL:HG13	2:B:727:ALA:HB1	1.28	1.07
1:C:839:ARG:NH2	2:B:582:PRO:CG	1.79	1.07
1:C:520:ASN:HD22	1:C:523:ARG:HG3	1.11	1.07
1:C:813:MET:HE2	2:B:558:VAL:HG13	1.30	1.07
1:C:521:ASN:HB2	2:B:780:LEU:HD22	1.36	1.07
2:D:780:LEU:CB	1:A:521:ASN:HB2	1.83	1.07
2:D:582:PRO:CB	1:A:839:ARG:NH2	2.18	1.06

Continued on next page...

Continued from previous page...

Atom-1	Atom-2	Interatomic distance (Å)	Clash overlap (Å)
1:A:26:ILE:HG12	1:A:58:ILE:O	1.55	1.06
1:A:520:ASN:ND2	1:A:523:ARG:CD	2.19	1.06
1:C:520:ASN:ND2	1:C:523:ARG:CD	2.19	1.06
1:C:820:VAL:HG13	2:B:634:TRP:HE1	0.91	1.06
1:C:26:ILE:HG12	1:C:58:ILE:HG22	1.32	1.05
1:C:648:THR:HG22	2:B:643:ALA:HB1	1.37	1.05
2:D:561:MET:CB	1:A:817:PHE:HZ	1.60	1.05
2:D:534:SER:O	2:D:729:ILE:CA	2.05	1.04
1:A:233:ARG:O	1:A:237:MET:CG	2.06	1.04
2:B:534:SER:HB3	2:B:750:ILE:HG23	1.31	1.04
1:C:242:GLY:O	1:C:245:TYR:HD2	1.40	1.04
1:A:242:GLY:O	1:A:245:TYR:HD2	1.40	1.04
2:B:534:SER:OG	2:B:732:ALA:HB2	1.58	1.04
2:D:634:TRP:HE1	1:A:820:VAL:HG13	0.96	1.03
2:D:643:ALA:HB1	1:A:648:THR:HG22	1.36	1.03
1:C:820:VAL:CG1	2:B:634:TRP:HE1	1.71	1.02
2:D:582:PRO:CG	1:A:839:ARG:NH2	1.81	1.02
1:A:519:ILE:HG23	1:A:529:PHE:CE2	1.94	1.02
1:C:519:ILE:HG23	1:C:529:PHE:CE2	1.94	1.02
2:D:630:MET:HB3	2:D:634:TRP:HZ3	1.24	1.02
2:D:780:LEU:CA	1:A:521:ASN:ND2	2.22	1.02
1:C:233:ARG:O	1:C:237:MET:CG	2.06	1.02
2:B:630:MET:HB3	2:B:634:TRP:HZ3	1.24	1.02
2:D:629:ILE:CD1	1:A:608:TRP:NE1	2.19	1.01
2:D:534:SER:OG	2:D:732:ALA:HB2	1.58	1.01
2:D:780:LEU:HD22	1:A:521:ASN:HB2	1.36	1.01
1:C:777:LEU:CD1	2:B:516:GLU:CG	2.40	1.00
2:D:416:PHE:CG	2:D:528:PHE:HZ	1.80	1.00
2:D:534:SER:HB2	2:D:732:ALA:HB2	1.42	1.00
1:C:608:TRP:NE1	2:B:629:ILE:CD1	2.19	0.99
1:A:531:LYS:NZ	1:A:777:LEU:HD11	1.77	0.99
1:C:531:LYS:NZ	1:C:777:LEU:HD11	1.77	0.99
2:D:516:GLU:HA	1:A:777:LEU:HD13	1.45	0.99
2:D:634:TRP:HE1	1:A:820:VAL:CG1	1.75	0.99
2:B:416:PHE:CG	2:B:528:PHE:HZ	1.80	0.99
2:D:777:LEU:CA	1:A:521:ASN:OD1	2.10	0.99
2:D:634:TRP:HZ2	1:A:824:ILE:HG13	1.19	0.98
1:C:777:LEU:HD12	2:B:516:GLU:CG	1.94	0.98
2:D:536:MET:HA	2:D:749:THR:HA	1.42	0.97
1:A:520:ASN:HD22	1:A:523:ARG:CD	1.77	0.97
1:C:777:LEU:HD13	2:B:516:GLU:HA	1.44	0.97

Continued on next page...

Continued from previous page...

Atom-1	Atom-2	Interatomic distance (Å)	Clash overlap (Å)
2:B:534:SER:O	2:B:729:ILE:CB	2.11	0.97
1:C:521:ASN:OD1	2:B:777:LEU:CA	2.13	0.96
1:C:531:LYS:HD2	1:C:776:ILE:HG21	1.46	0.96
1:A:531:LYS:HD2	1:A:776:ILE:HG21	1.46	0.96
2:D:516:GLU:CG	1:A:777:LEU:CD1	2.43	0.96
1:C:820:VAL:CG1	2:B:634:TRP:NE1	2.28	0.96
2:B:534:SER:HB2	2:B:732:ALA:HB2	1.42	0.96
1:C:520:ASN:HD22	1:C:523:ARG:CD	1.77	0.96
1:A:466:LEU:O	1:A:470:MET:HB2	1.65	0.96
2:D:438:LYS:O	2:D:451:ASN:HA	1.66	0.95
1:C:466:LEU:O	1:C:470:MET:HB2	1.65	0.95
1:C:824:ILE:HG13	2:B:634:TRP:HZ2	1.18	0.95
2:D:630:MET:O	2:D:634:TRP:CZ3	2.20	0.95
2:B:630:MET:O	2:B:634:TRP:CZ3	2.20	0.95
1:C:651:LEU:HD12	2:B:643:ALA:HB1	1.48	0.95
1:C:773:SER:C	1:C:776:ILE:HG22	1.88	0.94
2:D:534:SER:O	2:D:729:ILE:CB	2.16	0.94
2:B:438:LYS:O	2:B:451:ASN:HA	1.66	0.94
2:B:460:CYS:SG	2:B:528:PHE:HE1	1.91	0.93
1:C:648:THR:HG22	2:B:643:ALA:CB	1.99	0.93
1:A:234:ALA:O	1:A:237:MET:HB2	1.67	0.93
1:C:820:VAL:HG13	2:B:634:TRP:CD1	2.02	0.93
1:C:234:ALA:O	1:C:237:MET:HB2	1.67	0.93
2:D:538:SER:C	2:D:748:VAL:HG23	1.89	0.92
1:A:773:SER:C	1:A:776:ILE:HG22	1.88	0.92
2:D:634:TRP:NE1	1:A:820:VAL:CG1	2.32	0.92
1:A:531:LYS:O	1:A:776:ILE:HD11	1.70	0.92
1:C:531:LYS:O	1:C:776:ILE:HD11	1.70	0.92
1:A:242:GLY:O	1:A:245:TYR:CD2	2.23	0.92
2:D:516:GLU:CG	1:A:777:LEU:HD12	1.98	0.92
2:D:537:VAL:O	2:D:747:LEU:C	2.09	0.92
2:D:460:CYS:SG	2:D:528:PHE:HE1	1.91	0.91
2:B:538:SER:C	2:B:748:VAL:HG23	1.89	0.91
2:B:534:SER:CB	2:B:750:ILE:CG2	2.19	0.91
1:C:242:GLY:O	1:C:245:TYR:CD2	2.23	0.91
1:C:777:LEU:HD13	2:B:516:GLU:CB	2.00	0.91
2:B:537:VAL:O	2:B:747:LEU:C	2.09	0.91
2:D:643:ALA:CB	1:A:648:THR:HG22	2.00	0.91
2:B:630:MET:O	2:B:634:TRP:HE3	1.30	0.91
1:C:26:ILE:CG1	1:C:58:ILE:O	2.18	0.91
2:D:416:PHE:CG	2:D:528:PHE:CZ	2.58	0.90

Continued on next page...

Continued from previous page...

Atom-1	Atom-2	Interatomic distance (Å)	Clash overlap (Å)
2:D:534:SER:CB	2:D:750:ILE:CG2	2.19	0.90
2:D:643:ALA:HB1	1:A:651:LEU:HD12	1.53	0.90
2:D:634:TRP:CD1	1:A:820:VAL:HG13	2.05	0.90
2:D:629:ILE:HD13	1:A:608:TRP:CD1	2.08	0.89
2:D:759:THR:HG22	1:A:535:TYR:HE2	1.16	0.89
1:C:817:PHE:CE2	2:B:561:MET:HE2	2.06	0.89
1:C:520:ASN:ND2	1:C:523:ARG:HD2	1.85	0.89
1:C:608:TRP:CD1	2:B:629:ILE:HD13	2.07	0.89
1:A:520:ASN:ND2	1:A:523:ARG:HD2	1.85	0.89
1:A:26:ILE:CG1	1:A:58:ILE:O	2.21	0.88
1:A:531:LYS:NZ	1:A:777:LEU:HD21	1.88	0.88
1:C:521:ASN:CG	2:B:780:LEU:HB2	1.93	0.88
1:C:824:ILE:HD11	2:B:634:TRP:CE2	2.09	0.88
1:C:608:TRP:CH2	2:B:626:THR:HG22	2.08	0.88
2:B:630:MET:HB3	2:B:634:TRP:CZ3	2.09	0.88
2:D:533:ILE:CG2	2:D:729:ILE:CG2	2.51	0.88
2:D:630:MET:O	2:D:634:TRP:HE3	1.30	0.88
2:D:634:TRP:CH2	1:A:824:ILE:HG12	2.09	0.88
2:B:533:ILE:HB	2:B:757:ALA:N	1.86	0.88
2:B:534:SER:OG	2:B:732:ALA:CB	2.22	0.88
1:C:531:LYS:NZ	1:C:777:LEU:HD21	1.89	0.88
2:D:634:TRP:CE2	1:A:824:ILE:HD11	2.08	0.88
1:C:535:TYR:CE2	2:B:759:THR:CG2	2.43	0.88
2:D:641:PHE:HZ	1:A:816:VAL:HG11	1.35	0.88
1:C:520:ASN:HB2	1:C:523:ARG:HB2	1.56	0.88
2:D:516:GLU:CB	1:A:777:LEU:HD13	2.04	0.88
1:C:777:LEU:HD13	2:B:516:GLU:CA	2.04	0.87
1:C:824:ILE:HG12	2:B:634:TRP:CH2	2.08	0.87
2:B:533:ILE:HG22	2:B:729:ILE:CG2	2.04	0.87
1:C:817:PHE:CD2	2:B:561:MET:HE2	2.10	0.87
2:D:630:MET:HB3	2:D:634:TRP:CZ3	2.09	0.87
2:B:534:SER:HB3	2:B:750:ILE:HG21	0.87	0.87
1:C:820:VAL:CG1	2:B:634:TRP:CD1	2.58	0.87
1:C:816:VAL:HG11	2:B:641:PHE:HZ	1.32	0.87
1:C:26:ILE:CG1	1:C:58:ILE:HG22	2.04	0.87
1:A:520:ASN:HB2	1:A:523:ARG:HB2	1.56	0.87
2:B:416:PHE:CG	2:B:528:PHE:CZ	2.58	0.87
2:D:526:VAL:HG21	2:D:779:LEU:HD22	0.87	0.87
2:D:533:ILE:HG22	2:D:729:ILE:CG2	2.04	0.86
2:B:533:ILE:CG2	2:B:729:ILE:CG2	2.53	0.86
1:C:531:LYS:HZ3	1:C:777:LEU:HD21	1.39	0.86

Continued on next page...

Continued from previous page...

Atom-1	Atom-2	Interatomic distance (Å)	Clash overlap (Å)
1:A:531:LYS:HZ2	1:A:777:LEU:HD11	1.40	0.86
2:B:526:VAL:HG21	2:B:779:LEU:HD22	0.87	0.86
1:A:519:ILE:HG12	1:A:529:PHE:CE2	2.10	0.86
2:D:626:THR:HG22	1:A:608:TRP:CH2	2.09	0.86
1:C:816:VAL:CG1	2:B:641:PHE:HZ	1.88	0.86
1:A:26:ILE:CG1	1:A:58:ILE:HG22	2.05	0.86
1:C:521:ASN:HD22	2:B:780:LEU:CB	1.64	0.86
2:D:558:VAL:CG1	1:A:813:MET:HE2	2.05	0.86
1:A:531:LYS:HZ3	1:A:777:LEU:HD21	1.41	0.86
1:C:519:ILE:HG12	1:C:529:PHE:CE2	2.10	0.85
2:B:536:MET:HA	2:B:749:THR:HA	1.56	0.85
2:D:534:SER:OG	2:D:732:ALA:CB	2.22	0.85
1:C:531:LYS:O	1:C:776:ILE:CD1	2.23	0.85
2:D:533:ILE:HB	2:D:757:ALA:N	1.86	0.85
2:D:759:THR:CG2	1:A:780:HIS:CE1	2.59	0.85
1:A:531:LYS:O	1:A:776:ILE:CD1	2.23	0.85
1:C:521:ASN:ND2	2:B:780:LEU:N	2.25	0.85
2:D:561:MET:HE2	1:A:817:PHE:CE2	2.11	0.85
2:B:537:VAL:O	2:B:748:VAL:C	2.15	0.85
1:A:208:LEU:CB	1:A:238:LEU:HD11	2.05	0.85
1:C:780:HIS:CE1	2:B:759:THR:CG2	2.58	0.85
1:C:520:ASN:ND2	1:C:523:ARG:HG3	1.92	0.84
2:D:561:MET:HE2	1:A:817:PHE:CD2	2.12	0.84
2:D:516:GLU:CA	1:A:777:LEU:HD13	2.07	0.84
1:C:208:LEU:CB	1:C:238:LEU:HD11	2.05	0.84
2:D:538:SER:C	2:D:748:VAL:H	1.81	0.84
1:C:56:TRP:CB	1:C:59:GLN:CB	2.56	0.84
2:D:537:VAL:O	2:D:748:VAL:C	2.15	0.84
1:A:540:ILE:O	1:A:748:THR:HA	1.78	0.84
2:D:433:THR:HA	2:D:456:CYS:O	1.77	0.84
2:D:534:SER:HB3	2:D:750:ILE:HG21	0.87	0.84
2:D:536:MET:HA	2:D:749:THR:CA	2.06	0.84
2:D:536:MET:O	2:D:727:ALA:C	2.16	0.84
2:D:641:PHE:HZ	1:A:816:VAL:CG1	1.90	0.84
1:A:56:TRP:CB	1:A:59:GLN:CB	2.56	0.84
2:B:433:THR:HA	2:B:456:CYS:O	1.77	0.84
1:C:540:ILE:O	1:C:748:THR:HA	1.78	0.83
2:D:516:GLU:HB2	1:A:777:LEU:CB	2.08	0.83
1:A:520:ASN:ND2	1:A:523:ARG:HG3	1.92	0.83
2:D:777:LEU:O	1:A:521:ASN:ND2	2.11	0.83
1:C:531:LYS:CB	1:C:776:ILE:CD1	2.39	0.83

Continued on next page...

Continued from previous page...

Atom-1	Atom-2	Interatomic distance (Å)	Clash overlap (Å)
1:C:531:LYS:HZ2	1:C:777:LEU:HD11	1.40	0.83
2:D:634:TRP:CD1	1:A:820:VAL:CG1	2.61	0.83
2:B:538:SER:C	2:B:748:VAL:H	1.81	0.83
1:C:519:ILE:HG12	1:C:529:PHE:CZ	2.13	0.83
1:C:816:VAL:CG1	2:B:641:PHE:CZ	2.62	0.83
2:B:537:VAL:C	2:B:748:VAL:O	2.17	0.83
1:C:813:MET:HE1	2:B:558:VAL:HG13	1.60	0.83
2:D:558:VAL:CG1	1:A:813:MET:CE	2.57	0.83
2:B:534:SER:CB	2:B:732:ALA:CB	2.56	0.83
2:D:759:THR:CG2	1:A:535:TYR:CE2	2.47	0.83
1:A:208:LEU:HB3	1:A:238:LEU:CD1	2.05	0.83
2:D:534:SER:CB	2:D:732:ALA:CB	2.56	0.82
2:B:538:SER:HA	2:B:747:LEU:CA	2.07	0.82
2:B:780:LEU:O	2:B:784:GLY:N	2.12	0.82
2:B:536:MET:HB2	2:B:735:LEU:HD22	1.59	0.82
1:C:777:LEU:CB	2:B:516:GLU:HB2	2.08	0.82
1:C:813:MET:CE	2:B:558:VAL:CG1	2.57	0.82
1:A:519:ILE:HG12	1:A:529:PHE:CZ	2.13	0.82
2:D:538:SER:HA	2:D:747:LEU:CA	2.07	0.82
2:D:780:LEU:HB3	1:A:521:ASN:HB2	1.53	0.82
1:A:520:ASN:ND2	1:A:523:ARG:CG	2.43	0.82
1:C:164:ILE:HB	1:C:218:VAL:O	1.79	0.82
1:C:536:GLN:O	1:C:755:ARG:HA	1.80	0.82
2:D:780:LEU:N	1:A:521:ASN:ND2	2.28	0.82
2:D:780:LEU:O	2:D:784:GLY:N	2.12	0.82
2:D:537:VAL:C	2:D:748:VAL:O	2.17	0.81
2:D:641:PHE:CZ	1:A:816:VAL:CG1	2.63	0.81
1:A:536:GLN:O	1:A:755:ARG:HA	1.80	0.81
1:C:839:ARG:CZ	2:B:582:PRO:CB	2.51	0.81
2:D:115:PHE:O	2:D:119:HIS:HB2	1.80	0.81
2:B:115:PHE:O	2:B:119:HIS:HB2	1.80	0.81
1:A:164:ILE:HB	1:A:218:VAL:O	1.79	0.81
2:B:537:VAL:O	2:B:748:VAL:CA	2.28	0.81
2:D:780:LEU:HB2	1:A:521:ASN:CG	1.98	0.81
1:C:521:ASN:CB	2:B:780:LEU:HD22	2.10	0.81
2:D:759:THR:HG21	1:A:780:HIS:HE1	1.46	0.81
1:A:76:LEU:O	1:A:80:GLU:HB2	1.81	0.81
1:C:76:LEU:O	1:C:80:GLU:HB2	1.81	0.81
1:C:777:LEU:HD13	2:B:516:GLU:HG2	1.63	0.81
2:B:460:CYS:SG	2:B:528:PHE:CE1	2.74	0.81
2:D:537:VAL:O	2:D:748:VAL:CA	2.28	0.80

Continued on next page...

Continued from previous page...

Atom-1	Atom-2	Interatomic distance (Å)	Clash overlap (Å)
2:D:582:PRO:CB	1:A:839:ARG:CZ	2.54	0.80
1:A:144:TYR:O	1:A:147:GLN:HB2	1.80	0.80
1:A:531:LYS:CB	1:A:776:ILE:CD1	2.39	0.80
1:C:813:MET:HE1	2:B:558:VAL:CG1	2.12	0.80
1:C:839:ARG:NH1	2:B:582:PRO:HB2	1.96	0.80
1:C:817:PHE:HZ	2:B:561:MET:HB2	1.46	0.80
1:C:144:TYR:O	1:C:147:GLN:HB2	1.80	0.79
2:D:534:SER:HB2	2:D:732:ALA:CB	2.11	0.79
2:D:780:LEU:HD22	1:A:521:ASN:CB	2.12	0.79
2:D:460:CYS:SG	2:D:528:PHE:CE1	2.74	0.79
2:B:534:SER:HB2	2:B:732:ALA:CB	2.11	0.79
2:B:435:PRO:HA	2:B:454:LYS:O	1.83	0.79
2:B:751:GLY:O	2:B:753:GLY:N	2.16	0.79
1:C:780:HIS:CG	2:B:759:THR:HG1	2.00	0.79
2:D:516:GLU:HG2	1:A:777:LEU:HD13	1.62	0.79
2:D:780:LEU:HB3	1:A:521:ASN:HD22	0.97	0.79
1:C:521:ASN:HD22	2:B:780:LEU:HB3	0.97	0.79
2:D:634:TRP:CE2	1:A:824:ILE:CG1	2.66	0.78
2:D:751:GLY:O	2:D:753:GLY:N	2.16	0.78
1:C:521:ASN:ND2	2:B:777:LEU:O	2.16	0.78
2:D:435:PRO:HA	2:D:454:LYS:O	1.83	0.78
2:B:535:VAL:HA	2:B:729:ILE:CA	2.14	0.78
1:C:777:LEU:HB2	2:B:516:GLU:HG3	1.66	0.78
2:D:516:GLU:HG3	1:A:777:LEU:HB2	1.65	0.78
1:C:208:LEU:HB3	1:C:238:LEU:CD1	2.05	0.77
1:C:817:PHE:CZ	2:B:561:MET:HE2	2.19	0.77
2:D:536:MET:HB2	2:D:735:LEU:HD22	1.65	0.77
2:B:537:VAL:CA	2:B:748:VAL:O	2.32	0.77
2:D:561:MET:CG	1:A:817:PHE:CZ	2.67	0.77
2:D:636:PHE:HB2	1:A:615:LEU:HD22	1.66	0.77
2:D:536:MET:O	2:D:727:ALA:CA	2.31	0.77
1:C:233:ARG:C	1:C:237:MET:HG2	2.02	0.77
2:D:537:VAL:CA	2:D:748:VAL:O	2.32	0.77
1:C:521:ASN:HD21	2:B:780:LEU:N	1.83	0.77
2:D:561:MET:HE3	1:A:817:PHE:CD1	2.20	0.77
1:C:817:PHE:CZ	2:B:561:MET:CG	2.67	0.76
2:D:533:ILE:HG22	2:D:729:ILE:HG21	1.67	0.76
1:C:839:ARG:NH2	2:B:582:PRO:HB2	1.86	0.76
2:B:534:SER:C	2:B:729:ILE:HG23	2.04	0.76
2:B:533:ILE:HG22	2:B:729:ILE:HG21	1.66	0.76
1:A:233:ARG:C	1:A:237:MET:HG2	2.02	0.76

Continued on next page...

Continued from previous page...

Atom-1	Atom-2	Interatomic distance (Å)	Clash overlap (Å)
2:D:582:PRO:HB2	1:A:839:ARG:NH1	2.00	0.76
1:C:615:LEU:HD22	2:B:636:PHE:HB2	1.67	0.76
1:C:824:ILE:CG1	2:B:634:TRP:CE2	2.68	0.76
1:A:520:ASN:ND2	1:A:523:ARG:NE	2.34	0.76
1:C:695:ARG:HH22	2:B:780:LEU:CD1	1.99	0.76
1:C:77:SER:O	1:C:81:ASP:HB2	1.87	0.75
1:C:520:ASN:ND2	1:C:523:ARG:NE	2.34	0.75
1:C:520:ASN:HB2	1:C:523:ARG:CB	2.16	0.75
2:D:561:MET:HE3	1:A:817:PHE:CE1	2.21	0.75
1:C:695:ARG:HH22	2:B:780:LEU:HD11	1.51	0.75
2:B:535:VAL:HA	2:B:729:ILE:HA	1.67	0.75
1:C:780:HIS:HE1	2:B:759:THR:HG21	1.47	0.75
2:D:516:GLU:CG	1:A:777:LEU:HD13	2.14	0.75
1:A:77:SER:O	1:A:81:ASP:HB2	1.87	0.75
1:C:519:ILE:HG12	1:C:529:PHE:CD2	2.21	0.75
2:D:416:PHE:CD1	2:D:528:PHE:CE2	2.42	0.75
1:A:520:ASN:HB2	1:A:523:ARG:CB	2.16	0.74
2:D:561:MET:HB2	1:A:817:PHE:HZ	1.47	0.74
1:C:521:ASN:ND2	2:B:781:GLN:H	1.86	0.74
2:B:265:THR:HG1	2:B:284:TRP:HE1	1.35	0.74
1:C:777:LEU:HD13	2:B:516:GLU:CG	2.12	0.74
1:C:651:LEU:CD1	2:B:643:ALA:HB1	2.17	0.74
2:D:117:SER:HB2	2:D:143:THR:H	1.52	0.74
1:A:519:ILE:HG12	1:A:529:PHE:CD2	2.21	0.74
1:C:26:ILE:HD11	1:C:58:ILE:HG21	1.70	0.74
2:D:780:LEU:CB	1:A:521:ASN:HD22	1.67	0.74
2:D:561:MET:CE	1:A:817:PHE:CE1	2.71	0.73
1:C:521:ASN:HD22	2:B:781:GLN:N	1.85	0.73
2:D:780:LEU:CD1	1:A:695:ARG:HH22	2.01	0.73
1:C:521:ASN:ND2	2:B:781:GLN:N	2.36	0.73
2:B:117:SER:HB2	2:B:143:THR:H	1.52	0.73
1:C:438:GLY:HA3	1:C:478:LEU:HB2	1.71	0.73
1:A:26:ILE:HD11	1:A:58:ILE:HG21	1.70	0.73
1:A:540:ILE:HA	1:A:729:PHE:O	1.88	0.73
2:D:629:ILE:CD1	1:A:608:TRP:CZ2	2.71	0.73
1:C:510:ALA:O	1:C:763:ARG:NH2	2.22	0.73
2:D:759:THR:HG1	1:A:780:HIS:CG	2.06	0.73
2:D:781:GLN:N	1:A:521:ASN:HD22	1.87	0.73
2:D:781:GLN:H	1:A:521:ASN:ND2	1.87	0.72
2:D:561:MET:CE	1:A:817:PHE:CD1	2.71	0.72
2:D:533:ILE:HG23	2:D:729:ILE:HG22	1.70	0.72

Continued on next page...

Continued from previous page...

Atom-1	Atom-2	Interatomic distance (Å)	Clash overlap (Å)
1:C:817:PHE:CD1	2:B:561:MET:CE	2.73	0.72
1:C:540:ILE:HA	1:C:729:PHE:O	1.88	0.72
2:D:780:LEU:N	1:A:521:ASN:HD21	1.88	0.72
1:A:510:ALA:O	1:A:763:ARG:NH2	2.22	0.72
2:D:626:THR:HG22	1:A:608:TRP:HH2	1.52	0.72
2:D:780:LEU:HD11	1:A:695:ARG:HH22	1.55	0.72
2:D:534:SER:C	2:D:729:ILE:HG23	2.10	0.72
1:C:535:TYR:HE2	2:B:759:THR:HG21	1.51	0.71
1:C:817:PHE:CE1	2:B:561:MET:CE	2.73	0.71
1:C:839:ARG:HH21	2:B:582:PRO:HG2	1.47	0.71
1:A:438:GLY:HA3	1:A:478:LEU:HB2	1.71	0.71
2:B:432:ASN:HB2	2:B:457:LYS:HE2	1.72	0.71
1:C:608:TRP:CD1	2:B:629:ILE:CD1	2.71	0.71
2:D:634:TRP:NE1	1:A:824:ILE:HD11	2.05	0.71
2:D:643:ALA:HB1	1:A:651:LEU:CD1	2.21	0.71
2:B:533:ILE:HG23	2:B:729:ILE:HG22	1.71	0.71
2:D:781:GLN:N	1:A:521:ASN:ND2	2.38	0.71
1:C:531:LYS:HD2	1:C:776:ILE:CG2	2.20	0.71
1:C:535:TYR:CD2	2:B:759:THR:HG22	2.24	0.71
2:D:558:VAL:HG13	1:A:813:MET:HE1	1.73	0.71
2:B:413:GLU:H	2:B:417:VAL:HB	1.55	0.71
2:D:413:GLU:H	2:D:417:VAL:HB	1.55	0.71
1:C:817:PHE:CD1	2:B:561:MET:HE3	2.26	0.70
2:D:533:ILE:O	2:D:756:PHE:C	2.18	0.70
1:C:25:LYS:HB3	1:C:59:GLN:HG2	1.72	0.70
2:D:634:TRP:CE2	1:A:824:ILE:CD1	2.74	0.70
2:D:582:PRO:HG2	1:A:839:ARG:HH21	1.48	0.70
2:D:759:THR:HG21	1:A:535:TYR:HE2	1.54	0.70
2:B:416:PHE:CD1	2:B:528:PHE:CE2	2.42	0.70
1:C:26:ILE:CD1	1:C:58:ILE:CG2	2.68	0.70
1:A:520:ASN:CB	1:A:523:ARG:H	2.04	0.70
2:D:630:MET:CB	2:D:634:TRP:HZ3	2.02	0.70
2:D:432:ASN:HB2	2:D:457:LYS:HE2	1.72	0.70
2:D:561:MET:HE2	1:A:817:PHE:CZ	2.26	0.70
2:B:536:MET:HA	2:B:749:THR:CA	2.20	0.70
1:C:520:ASN:CB	1:C:523:ARG:H	2.04	0.69
1:A:25:LYS:HB3	1:A:59:GLN:HG2	1.74	0.69
2:D:629:ILE:CD1	1:A:608:TRP:CD1	2.73	0.69
2:B:630:MET:CB	2:B:634:TRP:HZ3	2.02	0.69
2:D:36:ILE:O	2:D:69:VAL:HA	1.91	0.69
1:A:56:TRP:CB	1:A:59:GLN:NE2	2.56	0.69

Continued on next page...

Continued from previous page...

Atom-1	Atom-2	Interatomic distance (Å)	Clash overlap (Å)
1:A:26:ILE:CD1	1:A:58:ILE:CG2	2.70	0.69
1:C:26:ILE:HD11	1:C:58:ILE:CG2	2.22	0.69
2:D:572:ILE:HD13	1:A:828:ILE:HD11	1.75	0.69
2:B:416:PHE:HA	2:B:459:PHE:HB2	1.75	0.69
1:C:519:ILE:HG12	1:C:529:PHE:CE1	2.28	0.69
2:B:407:SER:HA	2:B:476:ASP:HB2	1.75	0.69
1:A:531:LYS:HD2	1:A:776:ILE:CG2	2.20	0.69
2:B:765:LEU:HD13	2:B:772:LYS:HG2	1.75	0.69
1:C:608:TRP:CZ2	2:B:629:ILE:CD1	2.75	0.68
2:D:416:PHE:HA	2:D:459:PHE:HB2	1.75	0.68
1:C:824:ILE:HD11	2:B:634:TRP:NE1	2.09	0.68
1:C:824:ILE:CD1	2:B:634:TRP:CE2	2.76	0.68
1:A:520:ASN:HB2	1:A:523:ARG:H	1.58	0.68
1:A:521:ASN:O	1:A:525:GLN:HG3	1.93	0.68
2:B:536:MET:O	2:B:727:ALA:CA	2.40	0.68
1:C:608:TRP:HH2	2:B:626:THR:HG22	1.53	0.68
2:D:407:SER:HA	2:D:476:ASP:HB2	1.75	0.68
2:B:769:SER:HB2	2:B:771:TRP:HD1	1.59	0.68
1:C:775:SER:C	1:C:777:LEU:H	1.96	0.68
1:C:810:PHE:HE2	2:B:645:TYR:CZ	2.08	0.68
2:B:36:ILE:O	2:B:69:VAL:HA	1.91	0.68
2:B:536:MET:C	2:B:728:PHE:H	1.90	0.68
1:C:521:ASN:O	1:C:525:GLN:HG3	1.93	0.68
2:D:416:PHE:CE2	2:D:528:PHE:HE2	2.06	0.68
1:C:520:ASN:HB2	1:C:523:ARG:H	1.58	0.68
1:A:519:ILE:HG12	1:A:529:PHE:CE1	2.28	0.68
2:B:161:ILE:HA	2:B:386:ARG:HH12	1.59	0.68
2:B:416:PHE:CE2	2:B:528:PHE:HE2	2.06	0.68
1:C:839:ARG:NH2	2:B:582:PRO:O	2.27	0.67
2:D:161:ILE:HA	2:D:386:ARG:HH12	1.59	0.67
2:D:750:ILE:O	2:D:750:ILE:HG12	1.92	0.67
2:D:759:THR:HG22	1:A:535:TYR:CD2	2.26	0.67
1:A:775:SER:C	1:A:777:LEU:H	1.96	0.67
1:C:56:TRP:CB	1:C:59:GLN:NE2	2.56	0.67
2:D:765:LEU:HD13	2:D:772:LYS:HG2	1.75	0.67
2:B:533:ILE:N	2:B:757:ALA:HB3	2.06	0.67
2:B:682:PHE:HE1	2:B:727:ALA:HB3	1.58	0.67
2:D:769:SER:HB2	2:D:771:TRP:HD1	1.59	0.67
1:A:410:TYR:HB2	1:A:456:TYR:HB2	1.77	0.67
1:C:521:ASN:HB2	2:B:780:LEU:HB3	1.52	0.67
1:C:696:GLN:HE21	2:B:784:GLY:C	1.89	0.67

Continued on next page...

Continued from previous page...

Atom-1	Atom-2	Interatomic distance (Å)	Clash overlap (Å)
1:C:410:TYR:HB2	1:C:456:TYR:HB2	1.77	0.67
2:D:265:THR:HG1	2:D:284:TRP:HE1	1.40	0.67
1:A:531:LYS:C	1:A:776:ILE:HD11	2.14	0.67
2:D:280:SER:O	2:D:362:VAL:HB	1.95	0.67
2:B:750:ILE:O	2:B:750:ILE:HG12	1.92	0.67
1:C:531:LYS:C	1:C:776:ILE:HD11	2.14	0.67
2:D:270:LYS:O	2:D:370:ARG:NH1	2.28	0.67
1:A:302:THR:HG21	1:A:316:LYS:HB2	1.77	0.67
2:B:526:VAL:CG2	2:B:779:LEU:HD21	1.91	0.67
1:A:26:ILE:HD11	1:A:58:ILE:CG2	2.23	0.66
2:B:270:LYS:O	2:B:370:ARG:NH1	2.28	0.66
2:B:280:SER:O	2:B:362:VAL:HB	1.95	0.66
1:C:828:ILE:HD11	2:B:572:ILE:HD13	1.77	0.66
2:D:629:ILE:HD11	1:A:608:TRP:CZ2	2.27	0.66
2:D:343:TRP:HB2	2:D:348:LEU:HD12	1.78	0.66
2:D:526:VAL:CG2	2:D:779:LEU:HD21	1.91	0.66
2:D:582:PRO:CG	1:A:839:ARG:CZ	2.72	0.66
1:C:777:LEU:CD1	2:B:516:GLU:CB	2.73	0.66
2:D:536:MET:O	2:D:727:ALA:HB1	1.96	0.66
2:D:759:THR:OG1	1:A:780:HIS:CG	2.49	0.66
2:B:416:PHE:HD1	2:B:528:PHE:CZ	2.02	0.66
2:B:534:SER:HB2	2:B:750:ILE:HG21	1.69	0.65
1:C:521:ASN:ND2	2:B:780:LEU:H	1.95	0.65
2:B:36:ILE:HB	2:B:69:VAL:HG22	1.77	0.65
2:B:776:ASP:O	2:B:779:LEU:HB3	1.96	0.65
1:C:28:ASN:ND2	1:C:85:SER:O	2.30	0.65
1:C:651:LEU:CD1	2:B:643:ALA:CB	2.73	0.65
1:C:302:THR:HG21	1:C:316:LYS:HB2	1.77	0.65
2:D:36:ILE:HB	2:D:69:VAL:HG22	1.77	0.65
2:D:526:VAL:HG22	2:D:779:LEU:CD2	2.24	0.65
1:C:817:PHE:CE1	2:B:561:MET:HE3	2.30	0.65
1:C:558:PHE:HA	2:D:814:ILE:HG13	1.79	0.65
2:D:516:GLU:CB	1:A:777:LEU:HB3	2.15	0.65
2:B:486:GLY:O	2:B:692:ARG:NH2	2.30	0.65
1:C:351:TYR:O	1:C:366:ILE:HA	1.97	0.65
1:A:433:LYS:HA	1:A:455:CYS:O	1.97	0.65
1:A:531:LYS:HZ2	1:A:777:LEU:CD1	2.08	0.65
1:C:26:ILE:CD1	1:C:58:ILE:HG22	2.27	0.64
2:D:537:VAL:HA	2:D:727:ALA:HA	1.77	0.64
2:B:343:TRP:HB2	2:B:348:LEU:HD12	1.78	0.64
1:C:780:HIS:CG	2:B:759:THR:OG1	2.50	0.64

Continued on next page...

Continued from previous page...

Atom-1	Atom-2	Interatomic distance (Å)	Clash overlap (Å)
2:D:582:PRO:O	1:A:839:ARG:NH2	2.30	0.64
1:C:220:ILE:HA	1:C:248:LEU:HB2	1.79	0.64
1:C:433:LYS:HA	1:C:455:CYS:O	1.97	0.64
2:D:486:GLY:O	2:D:692:ARG:NH2	2.30	0.64
2:D:533:ILE:N	2:D:757:ALA:HB3	2.06	0.64
2:D:776:ASP:O	2:D:779:LEU:HB3	1.96	0.64
2:B:533:ILE:CG2	2:B:729:ILE:HG21	2.23	0.64
1:C:534:LYS:O	1:C:757:GLY:HA2	1.97	0.64
2:D:665:LEU:O	2:D:671:GLN:NE2	2.31	0.64
1:A:351:TYR:O	1:A:366:ILE:HA	1.97	0.64
2:D:533:ILE:CG2	2:D:729:ILE:HG21	2.23	0.64
2:D:537:VAL:HG23	2:D:748:VAL:CB	2.20	0.64
2:B:533:ILE:O	2:B:756:PHE:CB	2.45	0.64
1:C:685:LYS:HE3	1:C:710:ASN:HB2	1.78	0.64
1:C:839:ARG:CZ	2:B:582:PRO:O	2.46	0.64
1:A:220:ILE:HA	1:A:248:LEU:HB2	1.79	0.64
1:A:242:GLY:O	1:A:243:SER:C	2.35	0.64
1:A:534:LYS:O	1:A:757:GLY:HA2	1.97	0.64
1:C:531:LYS:HZ2	1:C:777:LEU:CD1	2.08	0.64
2:D:533:ILE:O	2:D:756:PHE:CB	2.45	0.64
1:C:432:LYS:HD3	1:C:464:ILE:HD12	1.80	0.63
2:B:483:GLY:HA3	2:B:494:ASN:HB3	1.80	0.63
1:C:777:LEU:HB3	2:B:516:GLU:CB	2.16	0.63
2:D:534:SER:HB2	2:D:750:ILE:HG21	1.69	0.63
1:A:685:LYS:HE3	1:A:710:ASN:HB2	1.79	0.63
1:A:26:ILE:CD1	1:A:58:ILE:HG22	2.28	0.63
1:A:28:ASN:ND2	1:A:85:SER:O	2.29	0.63
1:A:558:PHE:HA	2:B:814:ILE:HG13	1.79	0.63
2:D:558:VAL:CG1	1:A:813:MET:HE1	2.27	0.63
2:D:483:GLY:HA3	2:D:494:ASN:HB3	1.80	0.63
1:A:432:LYS:HD3	1:A:464:ILE:HD12	1.80	0.63
1:A:531:LYS:HB2	1:A:776:ILE:HD13	0.71	0.63
1:C:521:ASN:HD22	2:B:780:LEU:C	2.02	0.63
1:C:697:VAL:O	2:D:431:ARG:NH1	2.31	0.63
2:D:434:VAL:O	2:D:456:CYS:HB2	1.99	0.63
2:D:780:LEU:H	1:A:521:ASN:ND2	1.97	0.63
1:C:519:ILE:HG23	1:C:529:PHE:CD2	2.34	0.62
2:B:533:ILE:CG2	2:B:729:ILE:HG22	2.28	0.62
2:B:665:LEU:O	2:B:671:GLN:NE2	2.31	0.62
1:C:242:GLY:O	1:C:243:SER:C	2.35	0.62
1:C:531:LYS:HB2	1:C:776:ILE:HD13	0.71	0.62

Continued on next page...

Continued from previous page...

Atom-1	Atom-2	Interatomic distance (Å)	Clash overlap (Å)
2:D:535:VAL:HA	2:D:729:ILE:HA	1.78	0.62
2:D:636:PHE:CB	1:A:615:LEU:HD22	2.28	0.62
1:A:242:GLY:O	1:A:243:SER:O	2.17	0.62
2:B:538:SER:CA	2:B:748:VAL:H	2.12	0.62
1:C:125:MET:SD	1:C:252:ARG:NH2	2.73	0.62
2:D:220:LYS:HZ2	2:B:220:LYS:HG3	1.64	0.62
2:D:510:GLY:O	2:D:528:PHE:CE1	2.53	0.62
2:D:759:THR:OG1	1:A:780:HIS:ND1	2.28	0.62
1:A:124:ARG:NH1	1:A:251:GLU:OE1	2.33	0.62
1:C:817:PHE:CG	2:B:561:MET:HE2	2.34	0.62
1:A:152:PHE:O	1:A:155:MET:HB2	1.99	0.62
2:B:434:VAL:O	2:B:456:CYS:HB2	1.99	0.62
1:A:697:VAL:O	2:B:431:ARG:NH1	2.31	0.62
2:B:510:GLY:O	2:B:528:PHE:CE1	2.53	0.62
1:C:366:ILE:HB	1:C:373:ILE:HB	1.82	0.62
2:D:738:LYS:HA	2:D:741:ARG:HB2	1.82	0.62
1:A:125:MET:SD	1:A:252:ARG:NH2	2.73	0.62
2:D:538:SER:CA	2:D:748:VAL:H	2.13	0.62
1:C:242:GLY:O	1:C:243:SER:O	2.17	0.62
1:C:519:ILE:CG2	1:C:529:PHE:CE2	2.79	0.62
2:D:643:ALA:CB	1:A:651:LEU:CD1	2.78	0.62
1:A:234:ALA:C	1:A:237:MET:HB2	2.20	0.62
1:C:124:ARG:NH1	1:C:251:GLU:OE1	2.33	0.61
1:A:73:GLN:HG2	2:B:321:TYR:HD1	1.64	0.61
1:A:519:ILE:HG23	1:A:529:PHE:HE2	1.59	0.61
1:A:519:ILE:CG2	1:A:529:PHE:CE2	2.79	0.61
2:B:682:PHE:CD1	2:B:727:ALA:O	2.53	0.61
1:C:152:PHE:O	1:C:155:MET:HB2	1.99	0.61
2:D:216:GLN:HA	2:D:219:LEU:HB2	1.82	0.61
1:C:55:SER:N	1:C:293:HIS:CE1	2.68	0.61
1:C:615:LEU:HD22	2:B:636:PHE:CB	2.31	0.61
2:D:35:ASN:HA	2:D:68:ASN:O	2.01	0.61
2:D:535:VAL:HA	2:D:729:ILE:CA	2.30	0.61
2:D:791:LEU:HD23	2:D:794:LEU:HD12	1.82	0.61
2:B:216:GLN:HA	2:B:219:LEU:HB2	1.83	0.61
1:C:55:SER:O	1:C:293:HIS:HE1	1.84	0.61
1:C:372:VAL:HG12	1:C:374:PRO:HD3	1.83	0.61
2:D:741:ARG:NH2	2:D:795:TRP:O	2.32	0.61
2:D:777:LEU:O	1:A:521:ASN:CG	2.38	0.61
1:A:352:SER:HA	1:A:365:GLY:O	2.01	0.61
1:A:355:ASN:HB2	1:A:362:VAL:HB	1.83	0.61

Continued on next page...

Continued from previous page...

Atom-1	Atom-2	Interatomic distance (Å)	Clash overlap (Å)
1:C:26:ILE:CD1	1:C:58:ILE:HG21	2.30	0.61
1:C:537:GLY:H	1:C:752:LEU:HD22	1.65	0.61
1:C:608:TRP:CD2	2:B:629:ILE:CD1	2.64	0.61
1:A:146:HIS:NE2	1:A:345:ASP:OD2	2.34	0.61
1:A:372:VAL:HG12	1:A:374:PRO:HD3	1.83	0.61
2:B:738:LYS:HA	2:B:741:ARG:HB2	1.82	0.61
1:C:73:GLN:HG2	2:D:321:TYR:HD1	1.64	0.61
1:C:234:ALA:C	1:C:237:MET:HB2	2.20	0.61
1:A:537:GLY:H	1:A:752:LEU:HD22	1.65	0.61
2:B:536:MET:O	2:B:727:ALA:C	2.35	0.61
1:C:146:HIS:NE2	1:C:345:ASP:OD2	2.34	0.60
2:D:561:MET:HE2	1:A:817:PHE:CG	2.36	0.60
2:B:791:LEU:HD23	2:B:794:LEU:HD12	1.83	0.60
2:D:582:PRO:O	1:A:839:ARG:CZ	2.49	0.60
1:C:352:SER:HA	1:C:365:GLY:O	2.01	0.60
1:C:817:PHE:CE1	2:B:561:MET:HE2	2.36	0.60
1:A:335:THR:OG1	1:A:346:ARG:NH1	2.33	0.60
1:A:366:ILE:HB	1:A:373:ILE:HB	1.82	0.60
1:A:519:ILE:HG23	1:A:529:PHE:CD2	2.34	0.60
2:B:35:ASN:HA	2:B:68:ASN:O	2.01	0.60
2:B:515:ASN:HB2	2:B:518:ARG:H	1.66	0.60
1:C:335:THR:OG1	1:C:346:ARG:NH1	2.33	0.60
1:C:531:LYS:NZ	1:C:777:LEU:CD1	2.58	0.60
2:D:516:GLU:CB	1:A:777:LEU:CD1	2.77	0.60
1:A:193:LYS:NZ	1:A:210:GLU:O	2.35	0.60
2:B:175:THR:HG22	2:B:206:LEU:HB2	1.84	0.60
2:D:220:LYS:HG3	2:B:220:LYS:HZ2	1.67	0.60
2:D:645:TYR:CZ	1:A:810:PHE:HE2	2.11	0.60
1:A:531:LYS:NZ	1:A:777:LEU:CD1	2.58	0.60
2:B:536:MET:HB3	2:B:728:PHE:HB2	1.83	0.60
2:B:741:ARG:NH2	2:B:795:TRP:O	2.32	0.60
2:B:537:VAL:HG23	2:B:748:VAL:CB	2.20	0.60
1:C:839:ARG:HH22	2:B:582:PRO:HG2	0.43	0.60
2:D:175:THR:HG22	2:D:206:LEU:HB2	1.84	0.60
1:A:519:ILE:HG12	1:A:529:PHE:CG	2.36	0.60
1:C:488:GLU:HB2	1:C:499:ASN:HD21	1.67	0.60
2:D:515:ASN:HB2	2:D:518:ARG:H	1.66	0.60
2:D:740:GLY:HA2	2:D:800:CYS:H	1.66	0.60
1:A:26:ILE:CD1	1:A:58:ILE:HG21	2.31	0.60
1:A:488:GLU:HB2	1:A:499:ASN:HD21	1.67	0.60
1:A:775:SER:C	1:A:777:LEU:N	2.55	0.60

Continued on next page...

Continued from previous page...

Atom-1	Atom-2	Interatomic distance (Å)	Clash overlap (Å)
1:C:648:THR:CG2	2:B:643:ALA:CB	2.78	0.60
1:C:682:ALA:HB1	1:C:710:ASN:HA	1.83	0.60
2:D:35:ASN:O	2:D:97:GLY:N	2.35	0.60
1:A:55:SER:N	1:A:293:HIS:CE1	2.70	0.60
2:B:720:LEU:HB3	2:B:747:LEU:HD22	1.84	0.60
1:C:519:ILE:HG12	1:C:529:PHE:CG	2.36	0.59
1:A:341:ASN:HD22	1:A:345:ASP:HB2	1.67	0.59
1:A:682:ALA:HB1	1:A:710:ASN:HA	1.83	0.59
2:B:291:ARG:HG2	2:B:360:ARG:HH12	1.66	0.59
1:C:341:ASN:HD22	1:C:345:ASP:HB2	1.67	0.59
1:C:751:GLU:HB3	1:C:755:ARG:HH21	1.67	0.59
1:A:55:SER:O	1:A:293:HIS:HE1	1.84	0.59
2:B:35:ASN:O	2:B:97:GLY:N	2.35	0.59
2:D:582:PRO:HG2	1:A:839:ARG:HH22	0.42	0.59
1:A:160:TRP:HZ3	1:A:391:GLY:H	1.49	0.59
1:C:193:LYS:NZ	1:C:210:GLU:O	2.34	0.59
1:C:521:ASN:CG	2:B:777:LEU:O	2.41	0.59
1:C:839:ARG:CZ	2:B:582:PRO:CG	2.71	0.59
2:D:291:ARG:HG2	2:D:360:ARG:HH12	1.66	0.59
2:D:162:MET:HE1	2:D:228:LEU:HD11	1.84	0.59
1:C:160:TRP:HZ3	1:C:391:GLY:H	1.49	0.59
2:D:561:MET:HG3	1:A:817:PHE:CZ	2.38	0.59
1:A:751:GLU:HB3	1:A:755:ARG:HH21	1.68	0.59
1:C:355:ASN:HB2	1:C:362:VAL:HB	1.83	0.59
2:B:361:LEU:HB2	2:B:378:TRP:HB2	1.85	0.59
1:C:364:VAL:HA	1:C:375:ASN:HB2	1.85	0.59
1:C:531:LYS:C	1:C:776:ILE:CD1	2.72	0.59
1:C:820:VAL:HG11	2:B:634:TRP:CD1	2.38	0.59
1:A:317:THR:O	1:A:321:PHE:N	2.34	0.59
2:D:536:MET:HB3	2:D:728:PHE:HB2	1.84	0.58
2:D:720:LEU:HB3	2:D:747:LEU:HD22	1.84	0.58
1:A:145:SER:O	1:A:148:SER:OG	2.19	0.58
2:B:162:MET:HE1	2:B:228:LEU:HD11	1.86	0.58
2:B:503:GLN:HA	2:B:766:GLN:HE22	1.68	0.58
2:B:538:SER:C	2:B:746:LYS:O	2.42	0.58
1:C:79:CYS:HB3	2:D:80:LYS:HE3	1.86	0.58
1:C:536:GLN:HE22	1:C:734:ALA:HB2	1.68	0.58
1:A:406:GLU:HG2	1:A:410:TYR:HA	1.84	0.58
1:A:79:CYS:HB3	2:B:80:LYS:HE3	1.85	0.58
2:B:38:VAL:O	2:B:71:ALA:HA	2.02	0.58
1:C:55:SER:H	1:C:293:HIS:CE1	2.21	0.58

Continued on next page...

Continued from previous page...

Atom-1	Atom-2	Interatomic distance (Å)	Clash overlap (Å)
1:C:494:ASN:HB3	2:D:193:ASN:HB3	1.85	0.58
1:C:519:ILE:HG23	1:C:529:PHE:HE2	1.59	0.58
1:C:521:ASN:HD21	2:B:780:LEU:H	1.47	0.58
2:D:38:VAL:O	2:D:71:ALA:HA	2.02	0.58
2:D:503:GLN:HA	2:D:766:GLN:HE22	1.68	0.58
2:D:780:LEU:HB2	1:A:521:ASN:CB	2.30	0.58
1:A:155:MET:O	1:A:159:SER:N	2.37	0.58
1:A:494:ASN:HB3	2:B:193:ASN:HB3	1.85	0.58
2:B:740:GLY:HA2	2:B:800:CYS:H	1.66	0.58
2:D:216:GLN:C	2:B:220:LYS:NZ	2.55	0.58
1:A:364:VAL:HA	1:A:375:ASN:HB2	1.85	0.58
2:D:35:ASN:HB3	2:D:95:ILE:HG23	1.84	0.58
2:D:536:MET:O	2:D:727:ALA:CB	2.52	0.58
1:C:610:SER:O	1:C:614:LEU:HB2	2.04	0.58
2:D:216:GLN:C	2:B:220:LYS:HZ1	2.05	0.58
2:D:538:SER:C	2:D:746:LYS:O	2.42	0.58
1:A:531:LYS:C	1:A:776:ILE:CD1	2.72	0.58
1:A:610:SER:O	1:A:614:LEU:HB2	2.04	0.58
1:C:406:GLU:HG2	1:C:410:TYR:HA	1.84	0.58
2:D:572:ILE:CD1	1:A:828:ILE:HD11	2.34	0.58
1:C:813:MET:HE2	2:B:558:VAL:CG1	2.20	0.58
2:D:437:ARG:HD3	2:D:451:ASN:HB3	1.85	0.58
1:C:138:LEU:HD22	1:C:344:GLY:HA3	1.86	0.57
1:C:531:LYS:HZ3	1:C:777:LEU:CD2	2.16	0.57
2:D:780:LEU:C	1:A:521:ASN:HD22	2.06	0.57
2:B:535:VAL:N	2:B:729:ILE:HG12	2.04	0.57
1:C:780:HIS:ND1	2:B:759:THR:OG1	2.29	0.57
2:D:361:LEU:HB2	2:D:378:TRP:HB2	1.85	0.57
2:B:437:ARG:HD3	2:B:451:ASN:HB3	1.85	0.57
2:D:220:LYS:NZ	2:B:220:LYS:HG3	2.19	0.57
2:D:538:SER:C	2:D:748:VAL:CG2	2.70	0.57
1:A:56:TRP:CB	1:A:59:GLN:HB2	2.34	0.57
1:A:138:LEU:HD22	1:A:344:GLY:HA3	1.87	0.57
1:A:531:LYS:NZ	1:A:777:LEU:CD2	2.66	0.57
1:C:775:SER:C	1:C:777:LEU:N	2.55	0.57
2:D:123:PRO:HG3	2:D:334:LEU:HD12	1.87	0.57
2:D:157:VAL:HG21	2:D:361:LEU:HD13	1.87	0.57
2:D:220:LYS:HZ1	2:B:216:GLN:C	2.07	0.57
2:D:226:VAL:HG22	2:D:254:PHE:HB2	1.87	0.57
1:A:58:ILE:HG22	1:A:58:ILE:O	2.04	0.57
2:B:526:VAL:HG22	2:B:779:LEU:CD2	2.24	0.57

Continued on next page...

Continued from previous page...

Atom-1	Atom-2	Interatomic distance (Å)	Clash overlap (Å)
2:B:694:ILE:O	2:B:698:TYR:N	2.36	0.57
1:C:436:CYS:O	1:C:452:PRO:HA	2.05	0.57
1:C:521:ASN:CB	2:B:780:LEU:HB2	2.26	0.57
2:D:102:ASP:HB2	2:D:129:GLY:HA3	1.86	0.57
2:D:561:MET:CE	1:A:817:PHE:CZ	2.87	0.57
2:B:35:ASN:HB3	2:B:95:ILE:HG23	1.84	0.57
2:B:123:PRO:HG3	2:B:334:LEU:HD12	1.87	0.57
1:C:58:ILE:O	1:C:58:ILE:HG22	2.04	0.57
2:B:533:ILE:O	2:B:756:PHE:C	2.18	0.57
1:A:341:ASN:N	1:A:345:ASP:O	2.35	0.57
2:B:233:LYS:HA	2:B:261:VAL:HG13	1.87	0.57
1:C:240:MET:HE3	1:C:245:TYR:CE1	2.39	0.56
2:D:536:MET:CA	2:D:749:THR:HA	2.26	0.56
1:A:162:HIS:ND1	1:A:192:GLU:OE2	2.37	0.56
1:A:436:CYS:O	1:A:452:PRO:HA	2.05	0.56
1:C:56:TRP:CB	1:C:59:GLN:HB2	2.34	0.56
1:A:55:SER:H	1:A:293:HIS:CE1	2.23	0.56
2:B:511:SER:HA	2:B:528:PHE:CG	2.39	0.56
1:C:519:ILE:HG12	1:C:529:PHE:CD1	2.40	0.56
1:C:839:ARG:NE	2:B:582:PRO:O	2.38	0.56
2:D:407:SER:HG	2:D:506:VAL:H	1.52	0.56
2:D:511:SER:HA	2:D:528:PHE:CG	2.39	0.56
2:D:643:ALA:CB	1:A:648:THR:CG2	2.79	0.56
1:A:230:THR:HA	1:A:233:ARG:HD2	1.87	0.56
1:C:310:GLY:N	2:D:78:ASP:OD2	2.39	0.56
1:C:521:ASN:HD22	2:B:780:LEU:CA	1.98	0.56
1:A:536:GLN:HE22	1:A:734:ALA:HB2	1.68	0.56
1:A:693:PHE:HB3	1:A:703:TYR:HE1	1.71	0.56
2:B:533:ILE:CB	2:B:757:ALA:N	2.64	0.56
1:A:355:ASN:HD21	1:A:379:ILE:HG12	1.71	0.56
1:A:519:ILE:HG12	1:A:529:PHE:CD1	2.40	0.56
1:C:828:ILE:HD11	2:B:572:ILE:CD1	2.36	0.56
1:C:155:MET:O	1:C:159:SER:N	2.37	0.56
1:C:162:HIS:HB3	1:C:216:ALA:HB2	1.88	0.56
1:C:633:GLY:HA2	1:C:636:TRP:HD1	1.71	0.56
2:D:220:LYS:HG3	2:B:220:LYS:NZ	2.21	0.56
2:B:157:VAL:HG21	2:B:361:LEU:HD13	1.87	0.56
2:B:226:VAL:HG22	2:B:254:PHE:HB2	1.87	0.56
1:C:317:THR:O	1:C:321:PHE:N	2.34	0.56
1:C:341:ASN:N	1:C:345:ASP:O	2.35	0.56
1:C:810:PHE:CE2	2:B:645:TYR:OH	1.91	0.56

Continued on next page...

Continued from previous page...

Atom-1	Atom-2	Interatomic distance (Å)	Clash overlap (Å)
2:D:169:VAL:HA	2:D:199:ASP:HB2	1.87	0.56
1:A:489:ARG:HA	1:A:495:LYS:O	2.05	0.56
1:A:531:LYS:HZ3	1:A:777:LEU:CD2	2.17	0.56
2:D:416:PHE:HD1	2:D:528:PHE:CZ	2.02	0.56
2:B:407:SER:HG	2:B:506:VAL:H	1.52	0.56
1:C:738:PHE:HE1	1:C:793:VAL:HG13	1.71	0.56
1:A:773:SER:HA	1:A:776:ILE:CG2	2.36	0.56
2:B:169:VAL:HA	2:B:199:ASP:HB2	1.87	0.56
2:B:682:PHE:CE1	2:B:727:ALA:HB3	2.41	0.56
1:C:162:HIS:ND1	1:C:192:GLU:OE2	2.37	0.55
1:A:354:MET:HB3	1:A:361:LEU:HD22	1.88	0.55
1:C:410:TYR:HB3	1:C:412:LYS:HE3	1.88	0.55
1:C:531:LYS:NZ	1:C:777:LEU:CD2	2.66	0.55
2:D:229:LEU:HB2	2:D:257:VAL:HG22	1.88	0.55
2:D:643:ALA:HB1	1:A:648:THR:CG2	2.24	0.55
2:B:102:ASP:HB2	2:B:129:GLY:HA3	1.86	0.55
1:C:230:THR:HA	1:C:233:ARG:HD2	1.87	0.55
1:C:362:VAL:HG13	1:C:377:ARG:HD3	1.88	0.55
1:C:489:ARG:HA	1:C:495:LYS:O	2.05	0.55
1:C:817:PHE:CZ	2:B:561:MET:CE	2.87	0.55
2:D:96:HIS:HE1	2:D:315:GLU:HG2	1.71	0.55
2:D:310:PHE:HB3	2:D:312:TYR:H	1.72	0.55
2:D:780:LEU:H	1:A:521:ASN:HD21	1.51	0.55
1:A:310:GLY:N	2:B:78:ASP:OD2	2.39	0.55
2:B:510:GLY:O	2:B:528:PHE:CD1	2.60	0.55
1:C:817:PHE:CD1	2:B:561:MET:HE2	2.40	0.55
2:D:536:MET:C	2:D:728:PHE:H	1.98	0.55
1:A:410:TYR:HB3	1:A:412:LYS:HE3	1.88	0.55
1:A:738:PHE:HE1	1:A:793:VAL:HG13	1.71	0.55
2:B:96:HIS:HE1	2:B:315:GLU:HG2	1.71	0.55
1:C:355:ASN:HD21	1:C:379:ILE:HG12	1.71	0.55
1:C:739:GLU:HA	1:C:742:GLN:HB2	1.88	0.55
2:D:510:GLY:O	2:D:528:PHE:CD1	2.60	0.55
2:B:533:ILE:O	2:B:756:PHE:HB2	2.07	0.55
2:D:233:LYS:HA	2:D:261:VAL:HG13	1.87	0.55
2:D:777:LEU:O	1:A:521:ASN:OD1	2.24	0.55
2:B:229:LEU:HB2	2:B:257:VAL:HG22	1.88	0.55
1:C:354:MET:HB3	1:C:361:LEU:HD22	1.88	0.55
1:C:487:GLN:HA	1:C:497:GLU:O	2.07	0.55
2:B:310:PHE:HB3	2:B:312:TYR:H	1.72	0.55
1:C:520:ASN:ND2	1:C:523:ARG:CG	2.43	0.55

Continued on next page...

Continued from previous page...

Atom-1	Atom-2	Interatomic distance (Å)	Clash overlap (Å)
1:C:693:PHE:HB3	1:C:703:TYR:HE1	1.71	0.55
2:D:220:LYS:NZ	2:B:220:LYS:CG	2.70	0.55
2:D:533:ILE:O	2:D:756:PHE:HB2	2.07	0.55
1:C:396:THR:HB	1:C:472:PHE:HA	1.89	0.55
1:A:163:ILE:HB	1:A:191:ALA:HA	1.89	0.55
1:A:739:GLU:HA	1:A:742:GLN:HB2	1.88	0.55
1:C:163:ILE:HB	1:C:191:ALA:HA	1.89	0.55
1:C:234:ALA:HA	1:C:237:MET:HB2	1.90	0.55
1:C:283:ASP:HB3	1:C:338:VAL:HG21	1.89	0.55
1:C:521:ASN:N	1:C:695:ARG:HH22	2.05	0.55
1:C:525:GLN:HG3	2:B:777:LEU:HD22	1.88	0.55
1:C:608:TRP:CZ2	2:B:626:THR:HG22	2.41	0.55
1:C:773:SER:HA	1:C:776:ILE:CG2	2.36	0.55
1:C:824:ILE:CG1	2:B:634:TRP:HZ2	1.80	0.55
2:D:409:VAL:HG22	2:D:478:TYR:HB2	1.88	0.55
1:A:312:THR:HG22	2:B:77:THR:H	1.72	0.55
1:A:633:GLY:HA2	1:A:636:TRP:HD1	1.71	0.55
2:B:41:GLY:H	2:B:102:ASP:HA	1.72	0.54
1:C:26:ILE:HG13	1:C:58:ILE:O	2.07	0.54
1:C:119:LEU:HA	1:C:138:LEU:O	2.08	0.54
1:A:162:HIS:HB3	1:A:216:ALA:HB2	1.88	0.54
1:A:521:ASN:N	1:A:695:ARG:HH22	2.05	0.54
2:B:694:ILE:HA	2:B:697:ASN:HB2	1.89	0.54
1:C:121:LEU:O	1:C:140:THR:OG1	2.25	0.54
1:C:239:ASN:O	1:C:241:THR:N	2.40	0.54
1:C:521:ASN:ND2	2:B:780:LEU:C	2.60	0.54
2:D:408:ILE:HD12	2:D:475:TYR:HB3	1.89	0.54
1:A:121:LEU:O	1:A:140:THR:OG1	2.25	0.54
1:A:362:VAL:HG13	1:A:377:ARG:HD3	1.88	0.54
2:B:526:VAL:CG1	2:B:527:PRO:CD	2.49	0.54
1:C:513:ILE:HB	1:C:761:GLY:HA3	1.90	0.54
1:C:777:LEU:CB	2:B:516:GLU:CB	2.83	0.54
2:D:533:ILE:CB	2:D:757:ALA:N	2.64	0.54
2:D:630:MET:C	2:D:634:TRP:CZ3	2.81	0.54
2:D:694:ILE:HA	2:D:697:ASN:HB2	1.89	0.54
2:D:777:LEU:HD22	1:A:525:GLN:HG3	1.90	0.54
2:B:538:SER:C	2:B:748:VAL:CG2	2.70	0.54
1:C:312:THR:HG22	2:D:77:THR:H	1.72	0.54
2:D:416:PHE:CE2	2:D:528:PHE:CE2	2.89	0.54
2:D:526:VAL:CG1	2:D:527:PRO:CD	2.49	0.54
2:B:536:MET:O	2:B:727:ALA:HA	2.07	0.54

Continued on next page...

Continued from previous page...

Atom-1	Atom-2	Interatomic distance (Å)	Clash overlap (Å)
2:D:41:GLY:H	2:D:102:ASP:HA	1.72	0.54
2:D:645:TYR:OH	1:A:810:PHE:CE2	1.96	0.54
2:D:694:ILE:O	2:D:698:TYR:N	2.36	0.54
2:D:780:LEU:CA	1:A:521:ASN:HD22	2.03	0.54
1:A:119:LEU:HA	1:A:138:LEU:O	2.08	0.54
1:A:234:ALA:HA	1:A:237:MET:HB2	1.90	0.54
1:C:341:ASN:HA	1:C:347:LYS:HE3	1.90	0.54
1:A:487:GLN:HA	1:A:497:GLU:O	2.07	0.54
2:B:408:ILE:HD12	2:B:475:TYR:HB3	1.89	0.54
2:B:409:VAL:HG22	2:B:478:TYR:HB2	1.88	0.54
1:C:484:PHE:O	1:C:501:MET:N	2.41	0.54
2:D:784:GLY:C	1:A:696:GLN:NE2	2.53	0.54
1:A:240:MET:HE3	1:A:245:TYR:CE1	2.43	0.54
1:C:193:LYS:HE3	1:C:214:LEU:HD21	1.89	0.54
2:D:582:PRO:O	1:A:839:ARG:NE	2.41	0.54
1:A:239:ASN:O	1:A:241:THR:N	2.41	0.54
1:A:142:PRO:HB3	1:A:345:ASP:HB3	1.91	0.53
1:A:484:PHE:O	1:A:501:MET:N	2.41	0.53
2:B:630:MET:C	2:B:634:TRP:CZ3	2.81	0.53
1:C:521:ASN:OD1	2:B:777:LEU:O	2.26	0.53
1:A:193:LYS:HE3	1:A:214:LEU:HD21	1.88	0.53
1:A:396:THR:HB	1:A:472:PHE:HA	1.89	0.53
2:B:413:GLU:OE1	2:B:511:SER:N	2.40	0.53
1:C:694:ARG:HH21	1:C:707:GLU:HG2	1.73	0.53
2:D:516:GLU:CG	1:A:777:LEU:HB2	2.38	0.53
1:C:817:PHE:CZ	2:B:561:MET:HG3	2.40	0.53
1:C:398:LEU:HB3	1:C:512:MET:HG3	1.90	0.53
1:C:407:PRO:HG2	1:C:458:PHE:HE1	1.74	0.53
1:C:817:PHE:CE2	2:B:561:MET:HG3	2.44	0.53
2:D:384:SER:HB2	2:D:386:ARG:HE	1.74	0.53
1:A:694:ARG:HH21	1:A:707:GLU:HG2	1.73	0.53
1:C:715:ALA:HA	1:C:718:ILE:HD12	1.90	0.53
2:D:645:TYR:HA	2:D:648:ASN:HB2	1.90	0.53
1:A:341:ASN:HA	1:A:347:LYS:HE3	1.90	0.53
1:C:541:LEU:O	1:C:728:ALA:HA	2.08	0.53
2:D:413:GLU:OE1	2:D:511:SER:N	2.40	0.53
1:A:283:ASP:HB3	1:A:338:VAL:HG21	1.89	0.53
1:A:407:PRO:HG2	1:A:458:PHE:HE1	1.74	0.53
1:A:439:PRO:HG2	1:A:442:THR:HG22	1.91	0.53
1:C:364:VAL:O	1:C:375:ASN:N	2.38	0.53
2:D:295:GLY:HA2	2:D:298:ILE:HD12	1.90	0.53

Continued on next page...

Continued from previous page...

Atom-1	Atom-2	Interatomic distance (Å)	Clash overlap (Å)
2:D:781:GLN:O	2:D:785:ASP:N	2.42	0.53
1:A:363:GLN:H	1:A:377:ARG:HH11	1.56	0.53
1:A:541:LEU:O	1:A:728:ALA:HA	2.08	0.53
1:A:774:LEU:HA	1:A:777:LEU:HD12	1.91	0.53
2:B:416:PHE:CE2	2:B:528:PHE:CE2	2.89	0.53
2:B:537:VAL:HA	2:B:727:ALA:HA	1.90	0.53
1:C:68:LYS:HZ1	1:C:77:SER:H	1.57	0.53
2:D:42:HIS:HA	2:D:73:LEU:HB3	1.91	0.53
1:A:48:GLN:HA	1:A:51:LYS:HD2	1.91	0.53
2:B:511:SER:HA	2:B:528:PHE:CD1	2.44	0.53
2:B:645:TYR:HA	2:B:648:ASN:HB2	1.90	0.53
2:D:634:TRP:CD1	1:A:820:VAL:HG11	2.41	0.52
1:A:240:MET:CE	1:A:245:TYR:CE1	2.92	0.52
1:C:817:PHE:CG	2:B:561:MET:CE	2.93	0.52
2:D:511:SER:HA	2:D:528:PHE:CD1	2.44	0.52
2:D:535:VAL:HB	2:D:750:ILE:HA	1.91	0.52
2:B:211:GLU:HB2	2:B:215:THR:HG23	1.91	0.52
2:B:384:SER:HB2	2:B:386:ARG:HE	1.74	0.52
1:C:125:MET:O	1:C:139:ARG:NH2	2.42	0.52
1:C:165:LEU:O	1:C:194:VAL:HA	2.10	0.52
2:D:777:LEU:C	1:A:521:ASN:OD1	2.48	0.52
1:A:399:LYS:HB2	1:A:511:ASP:H	1.75	0.52
1:C:142:PRO:HB3	1:C:345:ASP:HB3	1.90	0.52
1:C:240:MET:CE	1:C:245:TYR:CE1	2.92	0.52
1:C:439:PRO:HG2	1:C:442:THR:HG22	1.91	0.52
2:D:176:ILE:HD12	2:D:207:ASP:HA	1.92	0.52
2:D:626:THR:HG22	1:A:608:TRP:CZ2	2.44	0.52
1:A:26:ILE:HG13	1:A:58:ILE:O	2.09	0.52
1:A:513:ILE:HB	1:A:761:GLY:HA3	1.90	0.52
1:C:396:THR:HA	1:C:472:PHE:HD1	1.74	0.52
1:C:409:VAL:HA	1:C:456:TYR:O	2.10	0.52
1:C:774:LEU:HA	1:C:777:LEU:HD12	1.91	0.52
2:D:211:GLU:HB2	2:D:215:THR:HG23	1.91	0.52
2:D:561:MET:HE2	1:A:817:PHE:CD1	2.44	0.52
1:A:396:THR:HA	1:A:472:PHE:HD1	1.74	0.52
1:A:409:VAL:HA	1:A:456:TYR:O	2.10	0.52
2:B:295:GLY:HA2	2:B:298:ILE:HD12	1.90	0.52
2:D:537:VAL:H	2:D:749:THR:HA	1.75	0.52
2:D:692:ARG:HA	2:D:695:ARG:HD2	1.91	0.52
1:A:364:VAL:O	1:A:375:ASN:N	2.38	0.52
2:B:537:VAL:H	2:B:749:THR:HA	1.74	0.52

Continued on next page...

Continued from previous page...

Atom-1	Atom-2	Interatomic distance (Å)	Clash overlap (Å)
1:C:267:LEU:HA	1:C:354:MET:O	2.10	0.52
1:A:435:ILE:HG23	1:A:452:PRO:HB2	1.90	0.52
1:A:559:GLN:NE2	2:B:814:ILE:O	2.42	0.52
1:C:435:ILE:HG23	1:C:452:PRO:HB2	1.90	0.52
1:C:441:ASP:O	1:C:446:SER:OG	2.28	0.52
1:C:608:TRP:CG	2:B:629:ILE:HD11	2.41	0.52
2:D:526:VAL:HG11	2:D:779:LEU:HD21	1.92	0.52
1:A:267:LEU:HA	1:A:354:MET:O	2.10	0.52
1:A:398:LEU:HB3	1:A:512:MET:HG3	1.90	0.52
1:A:441:ASP:O	1:A:446:SER:OG	2.28	0.52
2:D:220:LYS:NZ	2:B:217:VAL:HA	2.25	0.52
2:D:220:LYS:NZ	2:B:216:GLN:C	2.57	0.52
1:A:356:LEU:HB3	1:A:359:ARG:HA	1.92	0.52
2:B:176:ILE:HD12	2:B:207:ASP:HA	1.92	0.52
1:C:48:GLN:HA	1:C:51:LYS:HD2	1.91	0.52
1:A:165:LEU:O	1:A:194:VAL:HA	2.10	0.52
1:A:168:SER:HA	1:A:197:PHE:HB2	1.91	0.52
1:A:520:ASN:HD21	1:A:523:ARG:NE	2.07	0.52
2:B:692:ARG:HA	2:B:695:ARG:HD2	1.91	0.52
1:C:363:GLN:H	1:C:377:ARG:HH11	1.56	0.51
1:A:531:LYS:HZ2	1:A:777:LEU:CG	2.23	0.51
2:B:98:LEU:HB3	2:B:100:PHE:HE2	1.75	0.51
2:D:98:LEU:HB3	2:D:100:PHE:HE2	1.75	0.51
2:D:516:GLU:CG	1:A:777:LEU:CB	2.88	0.51
2:D:561:MET:HG3	1:A:817:PHE:CE2	2.45	0.51
1:A:240:MET:CE	1:A:245:TYR:HE1	2.23	0.51
2:B:526:VAL:HG11	2:B:779:LEU:HD21	1.92	0.51
1:C:467:ALA:HB2	1:C:474:TYR:HE2	1.75	0.51
1:C:559:GLN:NE2	2:D:814:ILE:O	2.42	0.51
2:D:561:MET:HE2	1:A:817:PHE:CE1	2.42	0.51
1:A:715:ALA:HA	1:A:718:ILE:HD12	1.90	0.51
2:B:668:LYS:HA	2:B:671:GLN:HB2	1.92	0.51
2:B:781:GLN:O	2:B:785:ASP:N	2.42	0.51
1:C:145:SER:OG	1:C:179:ARG:NH1	2.44	0.51
1:C:240:MET:CE	1:C:245:TYR:HE1	2.24	0.51
1:C:483:LYS:HD3	1:C:686:GLN:HB2	1.93	0.51
2:D:365:VAL:N	2:D:373:GLU:O	2.36	0.51
1:C:404:HIS:HE1	1:C:478:LEU:HB3	1.75	0.51
1:A:414:THR:HG23	1:A:453:GLN:HA	1.93	0.51
2:B:42:HIS:HA	2:B:73:LEU:HB3	1.91	0.51
2:B:630:MET:C	2:B:634:TRP:CE3	2.76	0.51

Continued on next page...

Continued from previous page...

Atom-1	Atom-2	Interatomic distance (Å)	Clash overlap (Å)
2:D:785:ASP:HA	1:A:696:GLN:NE2	2.25	0.51
1:C:410:TYR:O	1:C:455:CYS:HA	2.11	0.51
2:D:217:VAL:HA	2:B:220:LYS:NZ	2.25	0.51
1:A:410:TYR:O	1:A:455:CYS:HA	2.11	0.51
1:C:154:MET:SD	1:C:367:TYR:OH	2.62	0.51
1:C:356:LEU:HB3	1:C:359:ARG:HA	1.92	0.51
1:C:540:ILE:HG12	1:C:730:ILE:HG12	1.93	0.51
2:D:526:VAL:CB	2:D:527:PRO:HD2	2.37	0.51
1:A:145:SER:OG	1:A:179:ARG:NH1	2.44	0.51
1:A:536:GLN:O	1:A:755:ARG:CA	2.56	0.51
2:B:286:TYR:OH	2:B:379:GLU:OE2	2.28	0.51
1:C:168:SER:HA	1:C:197:PHE:HB2	1.91	0.51
1:C:221:LEU:HD11	1:C:247:TRP:HE3	1.76	0.51
1:C:368:ASN:HB2	1:C:371:HIS:HD2	1.76	0.51
1:C:399:LYS:HB2	1:C:511:ASP:H	1.75	0.51
1:A:154:MET:SD	1:A:367:TYR:OH	2.62	0.51
1:C:461:ASP:OD2	1:C:792:TRP:NE1	2.39	0.50
1:C:678:LYS:O	1:C:727:HIS:NE2	2.44	0.50
1:A:125:MET:O	1:A:139:ARG:NH2	2.42	0.50
2:B:101:GLY:HA2	2:B:128:HIS:H	1.76	0.50
1:C:414:THR:HG23	1:C:453:GLN:HA	1.93	0.50
1:C:536:GLN:O	1:C:755:ARG:CA	2.56	0.50
1:C:608:TRP:CZ2	2:B:629:ILE:HD11	2.30	0.50
2:D:89:LEU:HB3	2:D:95:ILE:HD12	1.93	0.50
2:D:561:MET:CE	1:A:817:PHE:CG	2.94	0.50
2:D:668:LYS:HA	2:D:671:GLN:HB2	1.92	0.50
1:A:221:LEU:HD11	1:A:247:TRP:HE3	1.76	0.50
1:A:404:HIS:HE1	1:A:478:LEU:HB3	1.75	0.50
2:B:494:ASN:O	2:B:498:GLY:N	2.31	0.50
2:D:171:SER:HA	2:D:201:GLN:HB2	1.93	0.50
2:D:284:TRP:HB3	2:D:374:LYS:HE2	1.94	0.50
1:A:351:TYR:HB2	1:A:367:TYR:HB2	1.93	0.50
1:C:525:GLN:HG3	2:B:777:LEU:CD2	2.42	0.50
2:D:220:LYS:CG	2:B:220:LYS:NZ	2.73	0.50
2:D:536:MET:C	2:D:727:ALA:HB1	2.32	0.50
1:A:467:ALA:HB2	1:A:474:TYR:HE2	1.75	0.50
1:A:483:LYS:HD3	1:A:686:GLN:HB2	1.93	0.50
1:A:678:LYS:O	1:A:727:HIS:NE2	2.44	0.50
1:C:251:GLU:HG2	1:C:254:ILE:HD12	1.93	0.50
1:C:553:SER:OG	1:C:812:ASN:ND2	2.45	0.50
2:D:101:GLY:HA2	2:D:128:HIS:H	1.76	0.50

Continued on next page...

Continued from previous page...

Atom-1	Atom-2	Interatomic distance (Å)	Clash overlap (Å)
2:B:365:VAL:N	2:B:373:GLU:O	2.36	0.50
2:D:298:ILE:HG23	2:D:341:VAL:HG11	1.94	0.50
1:A:251:GLU:HG2	1:A:254:ILE:HD12	1.93	0.50
1:A:308:CYS:HB2	2:B:80:LYS:HG3	1.94	0.50
1:A:679:PHE:HA	1:A:727:HIS:CD2	2.46	0.50
2:B:89:LEU:HB3	2:B:95:ILE:HD12	1.93	0.50
2:B:509:VAL:HA	2:B:763:ILE:HG23	1.93	0.50
2:D:509:VAL:HA	2:D:763:ILE:HG23	1.93	0.50
1:A:75:ALA:HB2	1:A:110:THR:HG21	1.94	0.50
1:A:560:SER:HA	1:A:563:TRP:HD1	1.77	0.50
1:C:75:ALA:HB2	1:C:110:THR:HG21	1.94	0.50
1:C:401:VAL:HG12	1:C:479:VAL:HG22	1.94	0.50
1:A:540:ILE:HG12	1:A:730:ILE:HG12	1.92	0.50
2:B:284:TRP:HB3	2:B:374:LYS:HE2	1.94	0.50
2:B:360:ARG:HA	2:B:379:GLU:HG2	1.94	0.50
1:C:777:LEU:CB	2:B:516:GLU:HG3	2.40	0.50
2:D:516:GLU:HG3	1:A:777:LEU:CB	2.39	0.50
1:C:679:PHE:HA	1:C:727:HIS:CD2	2.46	0.49
2:D:360:ARG:HA	2:D:379:GLU:HG2	1.94	0.49
2:B:171:SER:HA	2:B:201:GLN:HB2	1.93	0.49
2:B:298:ILE:HG23	2:B:341:VAL:HG11	1.94	0.49
2:B:701[A]:MET:HA	2:B:704:TYR:HD2	1.77	0.49
1:C:351:TYR:HB2	1:C:367:TYR:HB2	1.94	0.49
1:C:531:LYS:HZ2	1:C:777:LEU:CG	2.24	0.49
2:D:52:ARG:HA	2:D:293:ARG:HH21	1.78	0.49
2:D:629:ILE:CD1	1:A:608:TRP:CG	2.95	0.49
1:A:368:ASN:HB2	1:A:371:HIS:HD2	1.76	0.49
2:B:500:VAL:HG13	2:B:766:GLN:HG2	1.93	0.49
1:C:777:LEU:CB	2:B:516:GLU:CG	2.90	0.49
2:D:174:THR:HG22	2:D:230:TYR:HB2	1.93	0.49
1:A:520:ASN:HD22	1:A:523:ARG:NE	2.06	0.49
1:C:241:THR:HG22	1:C:247:TRP:CZ2	2.48	0.49
1:C:323:ARG:NH2	2:D:209:SER:OG	2.44	0.49
1:C:403:ILE:HD11	1:C:501:MET:HG3	1.95	0.49
1:C:531:LYS:O	1:C:776:ILE:HD12	2.11	0.49
1:C:620:GLY:HA2	2:D:610:GLY:HA3	1.95	0.49
2:D:500:VAL:HA	2:D:766:GLN:HE21	1.78	0.49
1:A:68:LYS:HZ1	1:A:76:LEU:HB2	1.77	0.49
2:B:125:LEU:HA	2:B:145:PHE:O	2.12	0.49
1:C:308:CYS:HB2	2:D:80:LYS:HG3	1.94	0.49
1:C:560:SER:HA	1:C:563:TRP:HD1	1.77	0.49

Continued on next page...

Continued from previous page...

Atom-1	Atom-2	Interatomic distance (Å)	Clash overlap (Å)
1:C:696:GLN:NE2	2:B:784:GLY:C	2.55	0.49
2:D:443:ASN:HB2	2:D:446:THR:H	1.76	0.49
1:A:683:THR:N	1:A:710:ASN:OD1	2.41	0.49
2:D:629:ILE:CD1	1:A:608:TRP:CD2	2.62	0.49
2:B:256:ILE:HG12	2:B:277:ILE:HD12	1.94	0.49
2:B:443:ASN:HB2	2:B:446:THR:H	1.76	0.49
2:D:701[A]:MET:HA	2:D:704:TYR:HD2	1.77	0.49
1:A:462:LEU:HD23	1:A:465:LYS:HD2	1.95	0.49
1:C:608:TRP:CG	2:B:629:ILE:CD1	2.96	0.49
2:D:276:LEU:HD12	2:D:366:LEU:HD12	1.95	0.49
2:D:375:VAL:HA	2:D:387:HIS:CD2	2.48	0.49
2:B:433:THR:HB	2:B:456:CYS:H	1.77	0.49
1:C:146:HIS:CD2	1:C:179:ARG:HH12	2.31	0.49
1:C:462:LEU:HD23	1:C:465:LYS:HD2	1.95	0.49
1:C:696:GLN:NE2	2:B:785:ASP:HA	2.28	0.49
1:C:779:SER:HA	1:C:784:PHE:HD2	1.77	0.49
1:A:67:HIS:NE2	1:A:93:SER:OG	2.43	0.49
1:A:234:ALA:HA	1:A:237:MET:CG	2.43	0.49
1:A:333:GLY:HA3	1:A:338:VAL:HG23	1.95	0.49
1:A:531:LYS:O	1:A:776:ILE:HD12	2.11	0.49
1:A:779:SER:HA	1:A:784:PHE:HD2	1.77	0.49
2:B:174:THR:HG22	2:B:230:TYR:HB2	1.93	0.49
2:B:466:LYS:HA	2:B:469:ARG:HD2	1.94	0.49
1:C:67:HIS:NE2	1:C:93:SER:OG	2.43	0.49
1:C:521:ASN:OD1	2:B:777:LEU:C	2.50	0.49
2:D:99:VAL:HG22	2:D:125:LEU:HD12	1.95	0.49
2:B:276:LEU:HD12	2:B:366:LEU:HD12	1.95	0.49
1:C:333:GLY:HA3	1:C:338:VAL:HG23	1.95	0.48
1:C:423:GLU:H	1:C:433:LYS:HZ1	1.59	0.48
2:B:537:VAL:CB	2:B:727:ALA:HB2	2.31	0.48
1:C:340:PHE:HA	1:C:346:ARG:HA	1.95	0.48
1:C:536:GLN:HB2	1:C:758:PHE:HE2	1.79	0.48
2:D:466:LYS:HA	2:D:469:ARG:HD2	1.94	0.48
2:D:494:ASN:O	2:D:498:GLY:N	2.31	0.48
2:D:513:THR:O	2:D:518:ARG:NH1	2.46	0.48
2:D:777:LEU:CD2	1:A:525:GLN:HG3	2.43	0.48
1:A:68:LYS:HZ1	1:A:77:SER:H	1.59	0.48
1:A:340:PHE:HA	1:A:346:ARG:HA	1.95	0.48
1:A:401:VAL:HG12	1:A:479:VAL:HG22	1.94	0.48
1:A:776:ILE:CG2	1:A:777:LEU:HG	2.43	0.48
2:B:437:ARG:HH21	2:B:453:LYS:HE3	1.78	0.48

Continued on next page...

Continued from previous page...

Atom-1	Atom-2	Interatomic distance (Å)	Clash overlap (Å)
2:B:500:VAL:HA	2:B:766:GLN:HE21	1.78	0.48
2:B:725:LEU:HD12	2:B:728:PHE:CZ	2.49	0.48
1:C:648:THR:CG2	2:B:643:ALA:HB1	2.25	0.48
2:D:125:LEU:HA	2:D:145:PHE:O	2.12	0.48
2:D:256:ILE:HG12	2:D:277:ILE:HD12	1.94	0.48
2:D:433:THR:HB	2:D:456:CYS:H	1.77	0.48
2:D:437:ARG:HH21	2:D:453:LYS:HE3	1.78	0.48
2:D:523:ASP:OD2	2:D:772:LYS:NZ	2.47	0.48
1:A:146:HIS:CD2	1:A:179:ARG:HH12	2.31	0.48
1:A:403:ILE:HD11	1:A:501:MET:HG3	1.95	0.48
2:B:99:VAL:HG22	2:B:125:LEU:HD12	1.95	0.48
1:C:776:ILE:CG2	1:C:777:LEU:HG	2.43	0.48
1:A:287:VAL:HG22	1:A:330:TYR:CG	2.48	0.48
1:A:731:TRP:HB2	1:A:736:LEU:HD21	1.96	0.48
2:B:52:ARG:HA	2:B:293:ARG:HH21	1.78	0.48
2:B:534:SER:C	2:B:729:ILE:HG12	2.34	0.48
1:C:114:TYR:HB3	1:C:314:ILE:HA	1.96	0.48
1:C:368:ASN:HD22	1:C:371:HIS:CD2	2.31	0.48
2:D:165:TYR:OH	2:D:389:VAL:N	2.46	0.48
2:D:500:VAL:HG13	2:D:766:GLN:HG2	1.93	0.48
1:A:520:ASN:HB3	1:A:523:ARG:H	1.79	0.48
2:B:523:ASP:OD2	2:B:772:LYS:NZ	2.47	0.48
1:C:234:ALA:HA	1:C:237:MET:CG	2.43	0.48
1:C:242:GLY:C	1:C:245:TYR:HD2	2.13	0.48
1:C:703:TYR:HE2	2:D:431:ARG:HH12	1.60	0.48
2:B:286:TYR:CE2	2:B:360:ARG:HD3	2.49	0.48
2:B:513:THR:O	2:B:518:ARG:NH1	2.46	0.48
1:C:520:ASN:HD21	1:C:523:ARG:NE	2.07	0.48
1:C:839:ARG:NH1	2:B:582:PRO:CB	2.68	0.48
2:D:347:ASP:HB2	2:D:358:HIS:HD2	1.79	0.48
1:C:505:LEU:HD12	1:C:527:ILE:HD13	1.96	0.48
1:C:683:THR:N	1:C:710:ASN:OD1	2.41	0.48
2:D:45:ASP:HA	2:D:73:LEU:HD11	1.96	0.48
1:A:368:ASN:HD22	1:A:371:HIS:CD2	2.31	0.48
1:A:536:GLN:HB2	1:A:758:PHE:HE2	1.78	0.48
2:B:181:ARG:HA	2:B:184:ILE:HD12	1.96	0.48
1:C:68:LYS:HZ1	1:C:76:LEU:HB2	1.79	0.48
1:C:776:ILE:HG22	1:C:777:LEU:HG	1.96	0.48
2:D:286:TYR:CE2	2:D:360:ARG:HD3	2.49	0.48
2:D:487:LYS:HD2	2:D:494:ASN:HD22	1.79	0.48
2:D:582:PRO:CB	1:A:839:ARG:NH1	2.71	0.48

Continued on next page...

Continued from previous page...

Atom-1	Atom-2	Interatomic distance (Å)	Clash overlap (Å)
1:A:620:GLY:HA2	2:B:610:GLY:HA3	1.95	0.48
1:C:287:VAL:HG22	1:C:330:TYR:CG	2.48	0.48
1:C:824:ILE:HG13	2:B:634:TRP:CE2	2.38	0.48
1:A:461:ASP:OD2	1:A:792:TRP:NE1	2.39	0.48
1:A:703:TYR:HE2	2:B:431:ARG:HH12	1.60	0.48
2:B:45:ASP:HA	2:B:73:LEU:HD11	1.96	0.48
2:B:734:VAL:HA	2:B:737:TYR:HD2	1.79	0.48
1:C:731:TRP:HB2	1:C:736:LEU:HD21	1.96	0.47
2:D:286:TYR:OH	2:D:379:GLU:OE2	2.28	0.47
1:C:150:VAL:O	1:C:153:GLU:HB2	2.13	0.47
1:C:485:GLY:HA2	1:C:686:GLN:HB3	1.96	0.47
2:D:143:THR:HA	2:D:335:HIS:CE1	2.49	0.47
2:D:486:GLY:HA3	2:D:497:ILE:HD12	1.96	0.47
1:A:150:VAL:O	1:A:153:GLU:HB2	2.14	0.47
2:D:181:ARG:HA	2:D:184:ILE:HD12	1.96	0.47
2:D:342:THR:HG22	2:D:347:ASP:HA	1.96	0.47
2:B:143:THR:HA	2:B:335:HIS:CE1	2.49	0.47
2:B:273:PRO:HA	2:B:370:ARG:HE	1.79	0.47
2:B:347:ASP:HB2	2:B:358:HIS:HD2	1.79	0.47
2:B:728:PHE:HB3	2:B:730:TYR:CE2	2.49	0.47
1:C:777:LEU:HB2	2:B:516:GLU:CG	2.39	0.47
1:C:814:ALA:HA	1:C:817:PHE:HD2	1.79	0.47
2:D:273:PRO:HA	2:D:370:ARG:HE	1.80	0.47
1:A:241:THR:HG22	1:A:247:TRP:CZ2	2.48	0.47
1:A:814:ALA:HA	1:A:817:PHE:HD2	1.80	0.47
2:B:701[B]:MET:HA	2:B:704:TYR:HD2	1.79	0.47
2:D:220:LYS:HZ1	2:B:217:VAL:HA	1.80	0.47
2:D:281:TYR:HE1	2:D:360:ARG:H	1.63	0.47
2:D:629:ILE:HD11	1:A:608:TRP:CG	2.42	0.47
1:A:242:GLY:C	1:A:245:TYR:HD2	2.13	0.47
1:A:720:ALA:O	1:A:725:LYS:N	2.47	0.47
2:B:375:VAL:HA	2:B:387:HIS:CD2	2.48	0.47
1:C:234:ALA:CA	1:C:237:MET:HB2	2.45	0.47
1:C:705:HIS:HA	1:C:709:HIS:HD2	1.80	0.47
1:C:774:LEU:HD22	2:B:516:GLU:OE2	2.14	0.47
1:A:693:PHE:O	1:A:703:TYR:OH	2.29	0.47
2:B:165:TYR:OH	2:B:389:VAL:N	2.46	0.47
1:C:46:VAL:HG13	1:C:60:LEU:HD13	1.96	0.47
1:C:242:GLY:N	1:C:245:TYR:CD2	2.83	0.47
2:D:533:ILE:CG2	2:D:729:ILE:HG22	2.28	0.47
2:D:535:VAL:HG13	2:D:729:ILE:HG13	1.48	0.47

Continued on next page...

Continued from previous page...

Atom-1	Atom-2	Interatomic distance (Å)	Clash overlap (Å)
2:D:579:TYR:HA	2:D:582:PRO:HD2	1.96	0.47
1:A:114:TYR:HB3	1:A:314:ILE:HA	1.96	0.47
1:A:234:ALA:CA	1:A:237:MET:HB2	2.45	0.47
1:A:553:SER:OG	1:A:812:ASN:ND2	2.45	0.47
1:A:560:SER:HA	1:A:563:TRP:CD1	2.50	0.47
1:A:776:ILE:HG22	1:A:777:LEU:HG	1.96	0.47
2:B:487:LYS:HD2	2:B:494:ASN:HD22	1.79	0.47
2:B:534:SER:C	2:B:729:ILE:HA	2.30	0.47
2:B:535:VAL:HG13	2:B:729:ILE:HG13	1.42	0.47
2:B:790:GLU:O	2:B:793:THR:OG1	2.28	0.47
1:C:479:VAL:HG12	1:C:481:ASP:H	1.80	0.47
1:C:615:LEU:HD13	2:B:632:SER:O	2.15	0.47
1:A:350:ASN:HA	1:A:367:TYR:O	2.14	0.47
1:A:505:LEU:HD12	1:A:527:ILE:HD13	1.96	0.47
2:B:281:TYR:HE1	2:B:360:ARG:H	1.63	0.47
1:C:350:ASN:HA	1:C:367:TYR:O	2.14	0.47
1:A:485:GLY:HA2	1:A:686:GLN:HB3	1.96	0.47
1:C:165:LEU:HB2	1:C:194:VAL:HG22	1.97	0.47
2:D:516:GLU:HB3	1:A:781:GLU:OE2	2.15	0.47
2:D:734:VAL:HA	2:D:737:TYR:HD2	1.79	0.47
1:A:242:GLY:N	1:A:245:TYR:CD2	2.83	0.47
2:B:242:GLU:O	2:B:245:SER:OG	2.25	0.47
2:D:516:GLU:CB	1:A:777:LEU:CB	2.83	0.46
2:D:578:GLU:O	2:D:581:SER:OG	2.28	0.46
1:A:447:PRO:HB2	1:A:449:HIS:CE1	2.50	0.46
2:B:342:THR:HG22	2:B:347:ASP:HA	1.96	0.46
2:B:535:VAL:CA	2:B:729:ILE:HA	2.42	0.46
2:D:712:GLY:N	2:D:715:ASP:OD2	2.47	0.46
2:B:486:GLY:HA3	2:B:497:ILE:HD12	1.96	0.46
2:B:526:VAL:HG23	2:B:779:LEU:HD22	1.75	0.46
1:A:605:SER:OG	1:A:606:ALA:N	2.48	0.46
1:A:705:HIS:HA	1:A:709:HIS:HD2	1.80	0.46
2:B:579:TYR:HA	2:B:582:PRO:HD2	1.96	0.46
2:B:712:GLY:N	2:B:715:ASP:OD2	2.47	0.46
1:C:447:PRO:HB2	1:C:449:HIS:CE1	2.50	0.46
2:D:751:GLY:C	2:D:753:GLY:N	2.69	0.46
2:D:781:GLN:H	1:A:521:ASN:HD21	1.62	0.46
2:B:526:VAL:CB	2:B:527:PRO:HD2	2.37	0.46
2:B:769:SER:HB2	2:B:771:TRP:CD1	2.45	0.46
2:D:636:PHE:CG	1:A:615:LEU:HD22	2.50	0.46
2:D:673:PRO:HB2	2:D:680:PHE:H	1.81	0.46

Continued on next page...

Continued from previous page...

Atom-1	Atom-2	Interatomic distance (Å)	Clash overlap (Å)
1:A:144:TYR:HE1	1:A:251:GLU:HB2	1.80	0.46
1:A:423:GLU:H	1:A:433:LYS:HZ1	1.63	0.46
2:B:526:VAL:CG1	2:B:779:LEU:HD21	2.46	0.46
1:C:521:ASN:HD21	2:B:781:GLN:H	1.61	0.46
2:D:629:ILE:HD12	1:A:608:TRP:CZ2	2.50	0.46
2:B:153:GLN:NE2	2:B:356:GLN:O	2.41	0.46
2:B:684:THR:O	2:B:710:GLN:N	2.45	0.46
1:C:560:SER:HA	1:C:563:TRP:CD1	2.50	0.46
1:C:720:ALA:O	1:C:725:LYS:N	2.47	0.46
2:D:334:LEU:HB3	2:D:338:MET:HG2	1.98	0.46
2:D:526:VAL:HG23	2:D:779:LEU:HD22	1.75	0.46
2:D:630:MET:C	2:D:634:TRP:CE3	2.77	0.46
2:D:735:LEU:HD13	2:D:750:ILE:HG22	1.98	0.46
1:A:323:ARG:NH2	2:B:209:SER:OG	2.44	0.46
1:A:543:LYS:HE2	1:A:724:ASN:HA	1.97	0.46
1:A:631:ILE:HG13	2:B:606:TRP:HH2	1.81	0.46
2:B:751:GLY:C	2:B:753:GLY:N	2.69	0.46
1:C:531:LYS:CD	1:C:777:LEU:HD21	2.46	0.46
1:C:543:LYS:HE2	1:C:724:ASN:HA	1.97	0.46
1:C:668:ASN:OD1	1:C:673:ARG:NH2	2.49	0.46
2:D:632:SER:O	1:A:615:LEU:HD13	2.15	0.46
2:D:634:TRP:HZ2	1:A:824:ILE:CG1	1.78	0.46
2:D:634:TRP:HA	2:D:637:PHE:HD2	1.81	0.46
1:A:626:SER:OG	1:A:627:PHE:N	2.48	0.46
2:B:113:LEU:HD13	2:B:124:ILE:HG21	1.97	0.46
2:B:725:LEU:HD12	2:B:728:PHE:HZ	1.80	0.46
1:C:627:PHE:HD1	2:D:606:TRP:HZ2	1.63	0.46
1:C:773:SER:HA	1:C:776:ILE:HG21	1.97	0.46
1:A:46:VAL:HG13	1:A:60:LEU:HD13	1.98	0.46
1:A:531:LYS:CD	1:A:777:LEU:HD21	2.46	0.46
2:B:537:VAL:HG12	2:B:727:ALA:HB2	0.46	0.46
2:D:526:VAL:CG1	2:D:779:LEU:HD21	2.46	0.46
2:D:735:LEU:O	2:D:739:ALA:CB	2.64	0.46
2:B:673:PRO:HB3	2:B:680:PHE:HB2	1.98	0.46
1:C:605:SER:OG	1:C:606:ALA:N	2.48	0.45
2:D:277:ILE:HG12	2:D:365:VAL:HG22	1.98	0.45
2:D:680:PHE:HB3	2:D:682:PHE:HE2	1.81	0.45
1:A:308:CYS:O	2:B:78:ASP:HB3	2.16	0.45
2:B:533:ILE:HG23	2:B:729:ILE:CG2	2.30	0.45
1:C:195:LEU:HD13	1:C:207:LEU:HB3	1.98	0.45
1:A:433:LYS:HE2	1:A:456:TYR:HE2	1.82	0.45

Continued on next page...

Continued from previous page...

Atom-1	Atom-2	Interatomic distance (Å)	Clash overlap (Å)
1:A:479:VAL:HG12	1:A:481:ASP:H	1.80	0.45
2:B:334:LEU:O	2:B:338:MET:N	2.44	0.45
2:B:691:GLU:O	2:B:702:HIS:NE2	2.48	0.45
1:C:204:VAL:O	1:C:208:LEU:N	2.47	0.45
1:C:412:LYS:HB2	1:C:456:TYR:HE1	1.81	0.45
1:C:508:GLY:HA2	1:C:763:ARG:HH22	1.82	0.45
1:C:531:LYS:CA	1:C:776:ILE:CD1	2.93	0.45
2:D:164:ASP:HB2	2:D:386:ARG:NH1	2.31	0.45
1:A:55:SER:C	1:A:293:HIS:HE1	2.20	0.45
2:B:690:THR:HA	2:B:693:ASN:HD22	1.82	0.45
1:C:308:CYS:O	2:D:78:ASP:HB3	2.16	0.45
2:D:273:PRO:HD2	2:D:276:LEU:HD11	1.99	0.45
2:D:485:HIS:O	2:D:497:ILE:N	2.34	0.45
2:D:534:SER:C	2:D:729:ILE:HG12	2.37	0.45
1:A:148:SER:HA	1:A:151:TRP:HD1	1.82	0.45
1:A:165:LEU:HB2	1:A:194:VAL:HG22	1.97	0.45
1:A:508:GLY:HA2	1:A:763:ARG:HH22	1.82	0.45
2:B:164:ASP:HB2	2:B:386:ARG:NH1	2.31	0.45
2:B:634:TRP:HA	2:B:637:PHE:HD2	1.81	0.45
1:A:265:GLY:N	1:A:356:LEU:O	2.36	0.45
2:B:673:PRO:HB2	2:B:680:PHE:H	1.81	0.45
1:C:145:SER:HB2	1:C:179:ARG:HD2	1.99	0.45
1:C:519:ILE:CG2	1:C:529:PHE:CD2	3.00	0.45
1:A:33:LEU:HD11	1:A:42:PHE:HE2	1.82	0.45
1:A:489:ARG:HG3	2:B:195:PHE:HE2	1.82	0.45
2:B:680:PHE:HB3	2:B:682:PHE:HE2	1.81	0.45
2:B:735:LEU:O	2:B:739:ALA:CB	2.64	0.45
1:C:631:ILE:HG13	2:D:606:TRP:HH2	1.81	0.45
2:D:113:LEU:HD13	2:D:124:ILE:HG21	1.97	0.45
2:D:673:PRO:HB3	2:D:680:PHE:HB2	1.98	0.45
1:A:221:LEU:N	1:A:248:LEU:O	2.41	0.45
1:A:412:LYS:HB2	1:A:456:TYR:HE1	1.81	0.45
1:A:519:ILE:O	1:A:692:TYR:OH	2.32	0.45
1:A:627:PHE:HD1	2:B:606:TRP:HZ2	1.64	0.45
1:C:55:SER:C	1:C:293:HIS:HE1	2.20	0.45
1:C:433:LYS:HE2	1:C:456:TYR:HE2	1.81	0.45
2:D:637:PHE:CZ	1:A:820:VAL:HG22	2.52	0.45
2:D:680:PHE:HB3	2:D:682:PHE:CE2	2.52	0.45
2:D:690:THR:HA	2:D:693:ASN:HD22	1.82	0.45
2:D:701[B]:MET:HA	2:D:704:TYR:HD2	1.79	0.45
2:D:777:LEU:CD2	1:A:521:ASN:O	2.65	0.45

Continued on next page...

Continued from previous page...

Atom-1	Atom-2	Interatomic distance (Å)	Clash overlap (Å)
1:A:195:LEU:HD13	1:A:207:LEU:HB3	1.98	0.45
1:A:668:ASN:OD1	1:A:673:ARG:NH2	2.49	0.45
1:A:779:SER:HA	1:A:784:PHE:HB2	1.99	0.45
2:B:276:LEU:HB2	2:B:366:LEU:HD12	1.99	0.45
2:B:367:ASN:ND2	2:B:373:GLU:OE1	2.50	0.45
2:B:534:SER:O	2:B:729:ILE:CG1	2.64	0.45
2:B:718:VAL:O	2:B:722:THR:N	2.48	0.45
2:D:153:GLN:NE2	2:D:356:GLN:O	2.41	0.45
2:D:334:LEU:O	2:D:338:MET:N	2.44	0.45
2:D:790:GLU:O	2:D:793:THR:OG1	2.28	0.45
1:A:773:SER:HA	1:A:776:ILE:HG21	1.97	0.45
1:C:820:VAL:HG11	2:B:634:TRP:HD1	1.82	0.45
2:D:276:LEU:HB2	2:D:366:LEU:HD12	1.99	0.45
2:D:367:ASN:ND2	2:D:373:GLU:OE1	2.50	0.45
1:A:169:ASP:N	1:A:197:PHE:O	2.42	0.45
2:B:714:GLU:HG2	2:B:717:LEU:HD12	1.99	0.45
1:C:144:TYR:HE1	1:C:251:GLU:HB2	1.80	0.44
1:C:234:ALA:O	1:C:238:LEU:N	2.50	0.44
2:D:529:VAL:HG12	2:D:530:GLU:O	2.17	0.44
2:D:740:GLY:O	2:D:799:ILE:N	2.42	0.44
1:A:277:GLU:HA	1:A:280:HIS:HD2	1.82	0.44
1:A:470:MET:HE1	1:A:771:ASN:HB2	2.00	0.44
1:A:520:ASN:HB2	1:A:523:ARG:N	2.30	0.44
2:B:334:LEU:HB3	2:B:338:MET:HG2	1.98	0.44
2:B:680:PHE:HB3	2:B:682:PHE:CE2	2.52	0.44
2:B:693:ASN:HA	2:B:696:ASN:HD22	1.83	0.44
1:A:439:PRO:HB3	1:A:448:ARG:HB3	1.99	0.44
1:A:522:GLU:H	1:A:695:ARG:NH2	2.15	0.44
2:B:172:LEU:HD23	2:B:228:LEU:HB2	1.99	0.44
2:B:273:PRO:HD2	2:B:276:LEU:HD11	1.98	0.44
2:B:277:ILE:HG12	2:B:365:VAL:HG22	1.98	0.44
2:B:535:VAL:HB	2:B:750:ILE:HA	1.98	0.44
1:C:126:SER:O	1:C:129:SER:OG	2.25	0.44
1:C:648:THR:HG22	2:B:643:ALA:HB2	1.94	0.44
1:C:648:THR:CG2	2:B:643:ALA:HB2	2.47	0.44
2:D:279:VAL:HG22	2:D:363:VAL:HG22	1.99	0.44
2:B:529:VAL:HG12	2:B:530:GLU:O	2.17	0.44
2:B:819:GLY:O	2:B:822:TYR:HB2	2.18	0.44
1:C:105:THR:O	1:C:108:SER:OG	2.27	0.44
1:C:489:ARG:HG3	2:D:195:PHE:HE2	1.82	0.44
1:C:525:GLN:CG	2:B:777:LEU:HD22	2.47	0.44

Continued on next page...

Continued from previous page...

Atom-1	Atom-2	Interatomic distance (Å)	Clash overlap (Å)
1:C:779:SER:HA	1:C:784:PHE:HB2	1.99	0.44
2:D:161:ILE:HA	2:D:386:ARG:NH1	2.31	0.44
2:D:274:SER:HB3	2:D:368:LYS:HA	2.00	0.44
1:A:204:VAL:O	1:A:208:LEU:N	2.47	0.44
1:A:272:ILE:HB	1:A:350:ASN:HB2	2.00	0.44
2:B:468:SER:HB3	2:B:475:TYR:HE2	1.82	0.44
1:C:170:ASP:HB2	1:C:173:GLY:H	1.82	0.44
1:C:277:GLU:HA	1:C:280:HIS:HD2	1.82	0.44
2:D:172:LEU:HD23	2:D:228:LEU:HB2	2.00	0.44
1:A:170:ASP:HB2	1:A:173:GLY:H	1.82	0.44
1:A:234:ALA:O	1:A:238:LEU:N	2.50	0.44
2:B:735:LEU:HD13	2:B:750:ILE:HG22	1.98	0.44
1:C:44:GLU:HA	1:C:47:ASN:HD22	1.83	0.44
1:C:522:GLU:H	1:C:695:ARG:NH2	2.15	0.44
2:D:217:VAL:HA	2:B:220:LYS:HZ1	1.83	0.44
2:D:691:GLU:O	2:D:702:HIS:NE2	2.48	0.44
2:D:714:GLU:HG2	2:D:717:LEU:HD12	1.99	0.44
1:A:105:THR:O	1:A:108:SER:OG	2.27	0.44
1:A:519:ILE:CG2	1:A:529:PHE:CD2	3.00	0.44
2:B:740:GLY:O	2:B:799:ILE:N	2.42	0.44
1:C:148:SER:HA	1:C:151:TRP:HD1	1.82	0.44
1:C:683:THR:O	1:C:711:TYR:N	2.51	0.44
2:D:160:LYS:NZ	2:D:382:THR:O	2.51	0.44
2:D:535:VAL:N	2:D:729:ILE:HG12	2.17	0.44
2:B:279:VAL:HG22	2:B:363:VAL:HG22	1.99	0.44
1:C:439:PRO:HB3	1:C:448:ARG:HB3	1.99	0.44
1:C:503:GLY:O	1:C:507:SER:N	2.50	0.44
1:C:626:SER:OG	1:C:627:PHE:N	2.48	0.44
2:D:306:MET:O	2:D:310:PHE:N	2.44	0.44
2:D:780:LEU:C	1:A:521:ASN:ND2	2.65	0.44
1:A:402:THR:N	1:A:477:HIS:O	2.50	0.44
1:C:520:ASN:HB2	1:C:523:ARG:CG	2.48	0.44
2:D:468:SER:HB3	2:D:475:TYR:HE2	1.82	0.44
1:A:145:SER:HB2	1:A:179:ARG:HD2	1.99	0.44
2:B:698:TYR:HB2	2:B:701[A]:MET:HB2	2.00	0.44
2:B:739:ALA:HB2	2:B:749:THR:HG21	1.99	0.44
1:C:33:LEU:HD11	1:C:42:PHE:HE2	1.82	0.43
1:C:115:ARG:HH11	1:C:319:PRO:HD3	1.83	0.43
1:C:470:MET:HE1	1:C:771:ASN:HB2	2.00	0.43
1:C:506:LEU:HG	1:C:527:ILE:HD11	2.00	0.43
2:D:681:ARG:NH1	2:D:723:GLY:O	2.51	0.43

Continued on next page...

Continued from previous page...

Atom-1	Atom-2	Interatomic distance (Å)	Clash overlap (Å)
2:D:693:ASN:HA	2:D:696:ASN:HD22	1.83	0.43
1:A:531:LYS:CA	1:A:776:ILE:CD1	2.93	0.43
2:B:274:SER:HB3	2:B:368:LYS:HA	2.00	0.43
1:C:487:GLN:HG3	1:C:498:TRP:CE2	2.53	0.43
1:C:505:LEU:HA	1:C:763:ARG:HH21	1.83	0.43
1:C:531:LYS:CE	1:C:777:LEU:HD21	2.47	0.43
2:D:819:GLY:O	2:D:822:TYR:HB2	2.18	0.43
1:A:167:VAL:HG21	1:A:177:GLN:HE21	1.84	0.43
1:A:519:ILE:CG1	1:A:529:PHE:CE2	2.93	0.43
1:A:539:THR:O	1:A:730:ILE:HA	2.18	0.43
1:C:167:VAL:HG21	1:C:177:GLN:HE21	1.84	0.43
1:C:773:SER:CA	1:C:776:ILE:CG2	2.97	0.43
2:D:526:VAL:HG12	2:D:527:PRO:HD2	0.68	0.43
1:A:115:ARG:HH11	1:A:319:PRO:HD3	1.83	0.43
2:B:439:PHE:HB3	2:B:449:GLY:HA3	1.99	0.43
2:B:526:VAL:HG12	2:B:527:PRO:HD2	0.68	0.43
1:C:34:SER:HB3	1:C:96:PRO:HA	2.01	0.43
1:C:70:ASN:HD22	1:C:73:GLN:NE2	2.17	0.43
1:C:272:ILE:HB	1:C:350:ASN:HB2	2.00	0.43
1:C:424:PHE:HB3	1:C:428:GLY:HA2	2.00	0.43
1:C:608:TRP:CZ2	2:B:629:ILE:HD12	2.53	0.43
1:C:731:TRP:HB2	1:C:736:LEU:HD11	2.00	0.43
2:D:739:ALA:HB2	2:D:749:THR:HG21	1.99	0.43
1:A:312:THR:O	2:B:106:GLN:NE2	2.52	0.43
1:A:506:LEU:HG	1:A:527:ILE:HD11	2.00	0.43
1:C:115:ARG:HD3	1:C:319:PRO:HD3	2.00	0.43
1:C:205:THR:HA	1:C:208:LEU:HD12	2.00	0.43
1:C:241:THR:HG22	1:C:247:TRP:HZ2	1.83	0.43
1:C:519:ILE:O	1:C:692:TYR:OH	2.32	0.43
1:C:520:ASN:HD22	1:C:523:ARG:NE	2.06	0.43
1:C:539:THR:O	1:C:730:ILE:HA	2.18	0.43
1:C:541:LEU:HD22	1:C:746:LEU:HD22	2.01	0.43
2:D:40:LEU:HB2	2:D:73:LEU:HD23	2.01	0.43
2:D:439:PHE:HB3	2:D:449:GLY:HA3	1.99	0.43
1:A:115:ARG:HD3	1:A:319:PRO:HD3	2.00	0.43
1:A:205:THR:HA	1:A:208:LEU:HD12	2.00	0.43
2:B:160:LYS:NZ	2:B:382:THR:O	2.51	0.43
1:C:519:ILE:HA	1:C:529:PHE:CZ	2.53	0.43
1:C:820:VAL:HG22	2:B:637:PHE:CZ	2.53	0.43
2:D:419:VAL:HG21	2:D:479:LEU:HD11	2.00	0.43
2:D:728:PHE:HB3	2:D:730:TYR:CE2	2.54	0.43

Continued on next page...

Continued from previous page...

Atom-1	Atom-2	Interatomic distance (Å)	Clash overlap (Å)
1:A:440:ASN:ND2	1:A:449:HIS:HB2	2.34	0.43
1:A:683:THR:O	1:A:711:TYR:N	2.51	0.43
2:B:99:VAL:HA	2:B:125:LEU:HB2	2.01	0.43
2:B:281:TYR:HD1	2:B:360:ARG:HB2	1.83	0.43
2:D:733:ALA:HA	2:D:736:ASN:HD22	1.83	0.43
1:C:123:THR:OG1	1:C:139:ARG:NE	2.51	0.43
1:C:169:ASP:N	1:C:197:PHE:O	2.42	0.43
1:C:408:PHE:HA	1:C:458:PHE:HD1	1.84	0.43
1:C:534:LYS:HB2	1:C:758:PHE:CD2	2.54	0.43
2:D:99:VAL:HA	2:D:125:LEU:HB2	2.01	0.43
1:A:240:MET:HE1	1:A:245:TYR:HE1	1.83	0.43
1:A:520:ASN:HB2	1:A:523:ARG:CG	2.48	0.43
1:A:531:LYS:CE	1:A:777:LEU:HD21	2.47	0.43
1:A:731:TRP:HB2	1:A:736:LEU:HD11	2.00	0.43
2:B:40:LEU:HB2	2:B:73:LEU:HD23	2.01	0.43
2:B:681:ARG:NH1	2:B:723:GLY:O	2.51	0.43
1:C:265:GLY:N	1:C:356:LEU:O	2.36	0.43
1:C:402:THR:N	1:C:477:HIS:O	2.50	0.43
2:D:242:GLU:O	2:D:245:SER:OG	2.25	0.43
2:D:243:ALA:HA	2:D:246:LEU:HB2	2.01	0.43
2:D:520:GLU:O	2:D:767:LYS:NZ	2.51	0.43
2:D:769:SER:HB2	2:D:771:TRP:CD1	2.45	0.43
1:A:408:PHE:HA	1:A:458:PHE:HD1	1.84	0.43
1:A:519:ILE:HA	1:A:529:PHE:CZ	2.53	0.43
1:A:828:ILE:HA	1:A:831:ILE:HD12	2.00	0.43
1:C:520:ASN:HB3	1:C:523:ARG:H	1.79	0.43
2:D:516:GLU:OE2	1:A:774:LEU:HD22	2.19	0.43
2:D:534:SER:O	2:D:729:ILE:CG1	2.67	0.43
2:D:684:THR:O	2:D:710:GLN:N	2.45	0.43
1:A:26:ILE:CG1	1:A:58:ILE:CG2	2.86	0.43
1:A:272:ILE:HD11	1:A:352:SER:HB3	2.00	0.43
1:A:773:SER:CA	1:A:776:ILE:CG2	2.97	0.43
2:B:243:ALA:HA	2:B:246:LEU:HB2	2.01	0.43
2:B:698:TYR:HB2	2:B:701[B]:MET:HB2	2.00	0.43
2:B:733:ALA:HA	2:B:736:ASN:HD22	1.83	0.43
1:C:519:ILE:CG1	1:C:529:PHE:CD2	2.98	0.42
1:A:487:GLN:HG3	1:A:498:TRP:CE2	2.53	0.42
2:B:419:VAL:HG21	2:B:479:LEU:HD11	2.00	0.42
2:B:536:MET:HB2	2:B:735:LEU:CD2	2.41	0.42
1:C:128:TYR:HA	1:C:134:HIS:CE1	2.54	0.42
1:C:272:ILE:HD11	1:C:352:SER:HB3	2.00	0.42

Continued on next page...

Continued from previous page...

Atom-1	Atom-2	Interatomic distance (Å)	Clash overlap (Å)
1:C:312:THR:O	2:D:106:GLN:NE2	2.52	0.42
1:C:440:ASN:ND2	1:C:449:HIS:HB2	2.34	0.42
1:C:615:LEU:HD22	2:B:636:PHE:CG	2.54	0.42
2:D:66:ASP:O	2:D:68:ASN:ND2	2.52	0.42
2:D:182:GLU:O	2:D:185:SER:OG	2.27	0.42
2:D:384:SER:HB2	2:D:386:ARG:NE	2.34	0.42
1:A:44:GLU:HA	1:A:47:ASN:HD22	1.83	0.42
1:A:123:THR:OG1	1:A:139:ARG:NE	2.51	0.42
1:A:424:PHE:HB3	1:A:428:GLY:HA2	2.00	0.42
2:B:78:ASP:O	2:B:81:SER:OG	2.24	0.42
2:B:408:ILE:HG12	2:B:507:MET:HB2	2.01	0.42
1:C:330:TYR:O	1:C:338:VAL:N	2.52	0.42
1:C:439:PRO:HG3	1:C:480:ALA:HA	2.01	0.42
2:D:189:THR:O	2:D:193:ASN:N	2.50	0.42
2:D:443:ASN:N	2:D:446:THR:O	2.41	0.42
2:D:500:VAL:HG11	2:D:522:VAL:HG13	2.01	0.42
2:D:634:TRP:NE1	1:A:824:ILE:CD1	2.77	0.42
1:A:34:SER:HB3	1:A:96:PRO:HA	2.01	0.42
1:A:503:GLY:O	1:A:507:SER:N	2.50	0.42
1:A:505:LEU:HA	1:A:763:ARG:HH21	1.83	0.42
1:A:534:LYS:HB2	1:A:758:PHE:CD2	2.54	0.42
1:A:544:LYS:HG2	1:A:747:VAL:HG23	2.02	0.42
2:B:533:ILE:O	2:B:750:ILE:HD11	2.20	0.42
1:C:657:LEU:HD11	2:D:654:ILE:HG12	2.01	0.42
2:D:408:ILE:HG12	2:D:507:MET:HB2	2.01	0.42
1:A:241:THR:HG22	1:A:247:TRP:HZ2	1.83	0.42
1:A:330:TYR:O	1:A:338:VAL:N	2.52	0.42
1:A:439:PRO:HG3	1:A:480:ALA:HA	2.01	0.42
1:A:657:LEU:HD11	2:B:654:ILE:HG12	2.01	0.42
2:B:520:GLU:O	2:B:767:LYS:NZ	2.51	0.42
1:C:781:GLU:OE2	2:B:516:GLU:HB3	2.20	0.42
1:C:828:ILE:HA	1:C:831:ILE:HD12	2.00	0.42
2:D:649:LEU:HA	2:D:652:PHE:HD2	1.85	0.42
1:A:128:TYR:HA	1:A:134:HIS:CE1	2.54	0.42
1:A:193:LYS:HD2	1:A:214:LEU:HD11	2.01	0.42
2:B:420:GLU:HB2	2:B:455:CYS:HB2	2.01	0.42
1:C:277:GLU:HA	1:C:280:HIS:CD2	2.55	0.42
1:C:521:ASN:O	2:B:777:LEU:CD2	2.67	0.42
1:C:553:SER:N	1:C:812:ASN:H	2.18	0.42
2:D:115:PHE:O	2:D:119:HIS:CB	2.61	0.42
2:D:281:TYR:HD1	2:D:360:ARG:HB2	1.83	0.42

Continued on next page...

Continued from previous page...

Atom-1	Atom-2	Interatomic distance (Å)	Clash overlap (Å)
2:D:506:VAL:HA	2:D:766:GLN:NE2	2.35	0.42
1:A:39:GLU:O	1:A:43:ARG:HG3	2.20	0.42
1:A:70:ASN:HD22	1:A:73:GLN:NE2	2.17	0.42
1:A:541:LEU:HD22	1:A:746:LEU:HD22	2.01	0.42
2:B:258:PRO:HA	2:B:278:SER:HA	2.00	0.42
1:C:193:LYS:HD2	1:C:214:LEU:HD11	2.01	0.42
1:C:243:SER:HB3	1:C:384:GLY:H	1.85	0.42
2:D:258:PRO:HA	2:D:278:SER:HA	2.00	0.42
1:A:277:GLU:HA	1:A:280:HIS:CD2	2.55	0.42
1:C:400:ILE:O	1:C:477:HIS:N	2.52	0.42
1:C:520:ASN:HB2	1:C:523:ARG:N	2.30	0.42
2:D:529:VAL:HG13	2:D:530:GLU:N	2.35	0.42
2:D:582:PRO:HB2	1:A:839:ARG:NH2	1.91	0.42
2:D:698:TYR:HB2	2:D:701[A]:MET:HB2	2.00	0.42
1:A:221:LEU:HB2	1:A:249:VAL:HA	2.02	0.42
1:A:400:ILE:O	1:A:477:HIS:N	2.53	0.42
2:B:66:ASP:O	2:B:68:ASN:ND2	2.52	0.42
2:B:384:SER:HB2	2:B:386:ARG:NE	2.34	0.42
2:B:649:LEU:HA	2:B:652:PHE:HD2	1.85	0.42
1:C:145:SER:O	1:C:148:SER:OG	2.19	0.42
1:C:544:LYS:HG2	1:C:747:VAL:HG23	2.02	0.42
1:C:39:GLU:O	1:C:43:ARG:HG3	2.20	0.42
2:B:408:ILE:HB	2:B:477:LEU:HD23	2.02	0.42
2:B:536:MET:CA	2:B:749:THR:HA	2.40	0.42
2:B:721:LYS:HG3	2:B:747:LEU:HD11	2.02	0.42
1:C:127:ILE:HG13	1:C:172:GLU:HG3	2.02	0.41
2:D:216:GLN:HG2	2:D:219:LEU:HD12	2.01	0.41
2:D:259:SER:HB3	2:D:280:SER:HB3	2.02	0.41
2:D:459:PHE:HD1	2:D:791:LEU:HD13	1.85	0.41
2:D:536:MET:O	2:D:727:ALA:HA	2.14	0.41
1:A:405:GLN:O	1:A:409:VAL:N	2.37	0.41
1:C:221:LEU:HB2	1:C:249:VAL:HA	2.02	0.41
1:C:234:ALA:HA	1:C:237:MET:HG3	2.02	0.41
2:D:537:VAL:HG22	2:D:749:THR:O	2.19	0.41
2:D:538:SER:CA	2:D:748:VAL:N	2.83	0.41
2:D:698:TYR:HB2	2:D:701[B]:MET:HB2	2.00	0.41
1:A:234:ALA:HA	1:A:237:MET:HG3	2.02	0.41
1:A:489:ARG:NH2	2:B:195:PHE:H	2.18	0.41
2:B:216:GLN:HG2	2:B:219:LEU:HD12	2.01	0.41
2:B:259:SER:HB3	2:B:280:SER:HB3	2.02	0.41
2:B:506:VAL:HA	2:B:766:GLN:NE2	2.34	0.41

Continued on next page...

Continued from previous page...

Atom-1	Atom-2	Interatomic distance (Å)	Clash overlap (Å)
1:C:247:TRP:HB2	1:C:266:ILE:HG23	2.02	0.41
2:D:191:VAL:O	2:D:194:SER:OG	2.32	0.41
2:D:420:GLU:HB2	2:D:455:CYS:HB2	2.01	0.41
2:D:500:VAL:O	2:D:766:GLN:NE2	2.54	0.41
2:D:721:LYS:HG3	2:D:747:LEU:HD11	2.02	0.41
1:A:94:HIS:CE1	1:A:123:THR:HA	2.55	0.41
1:A:398:LEU:HD23	1:A:398:LEU:HA	1.89	0.41
1:A:723:ASP:HB2	1:A:725:LYS:HG3	2.02	0.41
2:B:459:PHE:HD1	2:B:791:LEU:HD13	1.85	0.41
2:B:536:MET:O	2:B:727:ALA:HB1	2.20	0.41
2:B:537:VAL:HG22	2:B:749:THR:O	2.19	0.41
1:C:723:ASP:HB2	1:C:725:LYS:HG3	2.02	0.41
2:D:751:GLY:HA3	2:D:754:TYR:HD2	1.86	0.41
1:A:32:VAL:HA	1:A:65:VAL:O	2.21	0.41
1:A:553:SER:N	1:A:812:ASN:H	2.18	0.41
1:A:776:ILE:O	1:A:780:HIS:HD2	2.03	0.41
2:B:148:GLY:O	2:B:150:SER:N	2.52	0.41
1:C:27:VAL:HB	1:C:60:LEU:HD23	2.02	0.41
1:C:489:ARG:NH2	2:D:195:PHE:H	2.18	0.41
1:C:776:ILE:O	1:C:780:HIS:HD2	2.03	0.41
2:D:78:ASP:O	2:D:81:SER:OG	2.24	0.41
2:D:364:ILE:HA	2:D:374:LYS:HA	2.02	0.41
2:D:533:ILE:O	2:D:750:ILE:HD11	2.20	0.41
2:D:641:PHE:HZ	1:A:816:VAL:HG12	1.78	0.41
1:A:308:CYS:HB3	2:B:79:PRO:HG2	2.03	0.41
1:A:519:ILE:CG1	1:A:529:PHE:CD2	2.98	0.41
2:B:529:VAL:HG13	2:B:530:GLU:N	2.35	0.41
1:C:32:VAL:HA	1:C:65:VAL:O	2.21	0.41
2:D:148:GLY:O	2:D:150:SER:N	2.52	0.41
2:D:168:HIS:HA	2:D:198:TRP:CE3	2.56	0.41
2:D:522:VAL:HG12	2:D:523:ASP:O	2.20	0.41
2:D:777:LEU:HD22	1:A:525:GLN:CG	2.51	0.41
1:A:340:PHE:HB3	1:A:344:GLY:HA2	2.03	0.41
1:C:340:PHE:HB3	1:C:344:GLY:HA2	2.03	0.41
1:C:404:HIS:CE1	1:C:478:LEU:HB3	2.55	0.41
1:C:520:ASN:HA	2:B:780:LEU:HD11	1.69	0.41
2:D:829:ALA:HA	2:D:832:LEU:HD12	2.02	0.41
1:A:466:LEU:O	1:A:470:MET:CB	2.53	0.41
2:B:522:VAL:HG12	2:B:523:ASP:O	2.20	0.41
2:B:529:VAL:O	2:B:530:GLU:C	2.53	0.41
1:C:783:GLY:O	1:C:787:ASP:N	2.52	0.41

Continued on next page...

Continued from previous page...

Atom-1	Atom-2	Interatomic distance (Å)	Clash overlap (Å)
1:A:27:VAL:HB	1:A:60:LEU:HD23	2.02	0.41
1:A:73:GLN:HE21	2:B:321:TYR:HB3	1.86	0.41
1:A:109:TYR:HB3	2:B:112:MET:SD	2.60	0.41
1:A:783:GLY:O	1:A:787:ASP:N	2.52	0.41
2:B:364:ILE:HA	2:B:374:LYS:HA	2.02	0.41
2:B:500:VAL:HG11	2:B:522:VAL:HG13	2.01	0.41
1:C:26:ILE:CG1	1:C:58:ILE:CG2	2.85	0.41
1:C:73:GLN:HE21	2:D:321:TYR:HB3	1.86	0.41
1:C:94:HIS:CE1	1:C:123:THR:HA	2.56	0.41
1:C:351:TYR:HD2	1:C:367:TYR:HB2	1.86	0.41
1:C:398:LEU:HD23	1:C:398:LEU:HA	1.89	0.41
2:D:76:ARG:HB3	2:D:78:ASP:HB2	2.02	0.41
2:D:523:ASP:CG	2:D:767:LYS:HG2	2.41	0.41
2:D:634:TRP:CE2	1:A:824:ILE:HG13	2.38	0.41
1:A:127:ILE:HG13	1:A:172:GLU:HG3	2.02	0.41
1:A:355:ASN:O	1:A:362:VAL:N	2.54	0.41
1:A:740:ALA:HA	1:A:746:LEU:HB2	2.02	0.41
2:B:536:MET:CE	2:B:735:LEU:HD22	2.51	0.41
1:C:139:ARG:HB2	1:C:345:ASP:OD1	2.21	0.41
1:C:487:GLN:HG3	1:C:498:TRP:CD2	2.56	0.41
2:D:408:ILE:HB	2:D:477:LEU:HD23	2.02	0.41
1:A:318:GLY:HA2	1:A:321:PHE:HD2	1.86	0.41
1:A:573:VAL:HG11	1:A:614:LEU:HD11	2.03	0.41
1:A:741:SER:HB2	1:A:796:GLN:O	2.21	0.41
2:B:162:MET:O	2:B:167:TRP:N	2.54	0.41
2:B:168:HIS:HA	2:B:198:TRP:CE3	2.56	0.41
2:B:189:THR:O	2:B:193:ASN:N	2.50	0.41
2:B:829:ALA:HA	2:B:832:LEU:HD12	2.02	0.41
1:C:338:VAL:HG13	1:C:346:ARG:NE	2.36	0.40
1:C:519:ILE:CG1	1:C:529:PHE:CE2	2.93	0.40
1:C:741:SER:HB2	1:C:796:GLN:O	2.21	0.40
2:D:529:VAL:O	2:D:530:GLU:C	2.53	0.40
2:D:533:ILE:N	2:D:757:ALA:CB	2.80	0.40
2:D:718:VAL:O	2:D:722:THR:N	2.47	0.40
2:D:820:VAL:HG12	2:D:824:LEU:HG	2.03	0.40
1:A:247:TRP:HB2	1:A:266:ILE:HG23	2.02	0.40
2:B:500:VAL:O	2:B:766:GLN:NE2	2.54	0.40
2:B:631:VAL:O	2:B:635:ALA:N	2.49	0.40
1:C:109:TYR:HB3	2:D:112:MET:SD	2.60	0.40
1:C:234:ALA:HA	1:C:237:MET:CB	2.52	0.40
1:C:318:GLY:HA2	1:C:321:PHE:HD2	1.86	0.40

Continued on next page...

Continued from previous page...

Atom-1	Atom-2	Interatomic distance (Å)	Clash overlap (Å)
1:C:740:ALA:HA	1:C:746:LEU:HB2	2.02	0.40
2:D:732:ALA:HA	2:D:735:LEU:HD12	2.04	0.40
1:A:243:SER:HB3	1:A:384:GLY:H	1.85	0.40
1:A:489:ARG:HH21	2:B:194:SER:HA	1.86	0.40
2:B:161:ILE:HA	2:B:386:ARG:NH1	2.31	0.40
2:B:460:CYS:HG	2:B:528:PHE:HE1	1.63	0.40
2:B:538:SER:CA	2:B:748:VAL:N	2.83	0.40
2:D:219:LEU:HB3	2:D:246:LEU:HD11	2.04	0.40
2:D:739:ALA:HB2	2:D:749:THR:CG2	2.52	0.40
1:A:351:TYR:HD2	1:A:367:TYR:HB2	1.86	0.40
1:A:404:HIS:CE1	1:A:478:LEU:HB3	2.55	0.40
2:B:682:PHE:CE1	2:B:727:ALA:O	2.74	0.40
1:C:165:LEU:HA	1:C:165:LEU:HD23	1.88	0.40
1:C:354:MET:SD	1:C:363:GLN:HG2	2.62	0.40
1:C:489:ARG:HH21	2:D:195:PHE:H	1.68	0.40
1:C:573:VAL:HG11	1:C:614:LEU:HD11	2.03	0.40
2:D:433:THR:HG21	2:D:455:CYS:HB3	2.03	0.40
2:D:643:ALA:HB2	1:A:648:THR:CG2	2.50	0.40
1:A:489:ARG:HH21	2:B:195:PHE:H	1.68	0.40
2:B:180:TYR:HA	2:B:183:PHE:HD2	1.87	0.40
2:B:523:ASP:CG	2:B:767:LYS:HG2	2.41	0.40
2:B:820:VAL:HG12	2:B:824:LEU:HG	2.03	0.40
1:C:308:CYS:HB3	2:D:79:PRO:HG2	2.03	0.40
1:C:431:VAL:O	1:C:433:LYS:HG3	2.22	0.40
2:D:508:ALA:HB3	2:D:764:ALA:HB3	2.04	0.40
2:D:532:GLY:HA3	2:D:755:ILE:CG2	2.52	0.40
2:D:687:ASN:N	2:D:691:GLU:OE1	2.55	0.40
2:B:433:THR:HG21	2:B:455:CYS:HB3	2.03	0.40
2:B:457:LYS:O	2:B:461:ILE:HD12	2.22	0.40
2:B:485:HIS:O	2:B:497:ILE:N	2.34	0.40
2:B:732:ALA:HA	2:B:735:LEU:HD12	2.04	0.40

There are no symmetry-related clashes.

5.3 Torsion angles

5.3.1 Protein backbone

In the following table, the Percentiles column shows the percent Ramachandran outliers of the chain as a percentile score with respect to all PDB entries followed by that with respect to all EM entries.

The Analysed column shows the number of residues for which the backbone conformation was analysed, and the total number of residues.

Mol	Chain	Analysed	Favoured	Allowed	Outliers	Percentiles	
1	A	771/847 (91%)	690 (90%)	75 (10%)	6 (1%)	19	60
1	C	774/847 (91%)	691 (89%)	77 (10%)	6 (1%)	19	60
2	B	741/841 (88%)	653 (88%)	83 (11%)	5 (1%)	22	63
2	D	741/841 (88%)	653 (88%)	83 (11%)	5 (1%)	22	63
All	All	3027/3376 (90%)	2687 (89%)	318 (10%)	22 (1%)	26	63

All (22) Ramachandran outliers are listed below:

Mol	Chain	Res	Type
1	C	95	PRO
1	C	98	PRO
1	C	240	MET
1	C	243	SER
2	D	329	VAL
1	A	95	PRO
1	A	98	PRO
1	A	240	MET
1	A	243	SER
2	B	329	VAL
1	C	239	ASN
1	A	239	ASN
2	D	752	SER
2	B	752	SER
1	C	754	PHE
2	D	327	PRO
2	D	513	THR
1	A	754	PHE
2	B	327	PRO
2	B	513	THR
2	D	819	GLY
2	B	819	GLY

5.3.2 Protein sidechains [i](#)

In the following table, the Percentiles column shows the percent sidechain outliers of the chain as a percentile score with respect to all PDB entries followed by that with respect to all EM entries.

The Analysed column shows the number of residues for which the sidechain conformation was

analysed, and the total number of residues.

Mol	Chain	Analysed	Rotameric	Outliers	Percentiles	
1	A	658/731 (90%)	658 (100%)	0	100	100
1	C	659/731 (90%)	659 (100%)	0	100	100
2	B	612/729 (84%)	611 (100%)	1 (0%)	93	96
2	D	612/729 (84%)	611 (100%)	1 (0%)	93	96
All	All	2541/2920 (87%)	2539 (100%)	2 (0%)	93	97

All (2) residues with a non-rotameric sidechain are listed below:

Mol	Chain	Res	Type
2	D	750	ILE
2	B	750	ILE

Sometimes sidechains can be flipped to improve hydrogen bonding and reduce clashes. All (57) such sidechains are listed below:

Mol	Chain	Res	Type
1	C	47	ASN
1	C	73	GLN
1	C	86	GLN
1	C	177	GLN
1	C	280	HIS
1	C	293	HIS
1	C	341	ASN
1	C	371	HIS
1	C	449	HIS
1	C	499	ASN
1	C	520	ASN
1	C	521	ASN
1	C	709	HIS
2	D	42	HIS
2	D	44	HIS
2	D	68	ASN
2	D	96	HIS
2	D	106	GLN
2	D	216	GLN
2	D	323	GLN
2	D	358	HIS
2	D	367	ASN
2	D	387	HIS
2	D	443	ASN

Continued on next page...

Continued from previous page...

Mol	Chain	Res	Type
2	D	494	ASN
2	D	693	ASN
2	D	696	ASN
2	D	736	ASN
2	D	766	GLN
1	A	47	ASN
1	A	73	GLN
1	A	86	GLN
1	A	177	GLN
1	A	280	HIS
1	A	293	HIS
1	A	341	ASN
1	A	371	HIS
1	A	449	HIS
1	A	499	ASN
1	A	520	ASN
1	A	521	ASN
1	A	536	GLN
1	A	709	HIS
2	B	42	HIS
2	B	44	HIS
2	B	68	ASN
2	B	96	HIS
2	B	323	GLN
2	B	358	HIS
2	B	367	ASN
2	B	387	HIS
2	B	443	ASN
2	B	494	ASN
2	B	693	ASN
2	B	696	ASN
2	B	736	ASN
2	B	766	GLN

5.3.3 RNA [i](#)

There are no RNA molecules in this entry.

5.4 Non-standard residues in protein, DNA, RNA chains [i](#)

There are no non-standard protein/DNA/RNA residues in this entry.

5.5 Carbohydrates [i](#)

There are no monosaccharides in this entry.

5.6 Ligand geometry [i](#)

There are no ligands in this entry.

5.7 Other polymers [i](#)

There are no such residues in this entry.

5.8 Polymer linkage issues [i](#)

There are no chain breaks in this entry.

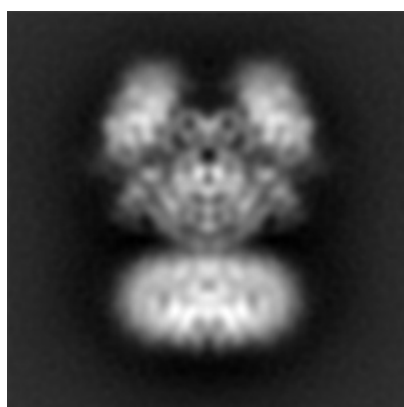
6 Map visualisation [i](#)

This section contains visualisations of the EMDB entry EMD-9717. These allow visual inspection of the internal detail of the map and identification of artifacts.

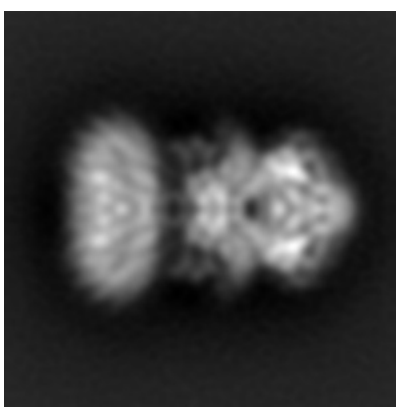
No raw map or half-maps were deposited for this entry and therefore no images, graphs, etc. pertaining to the raw map can be shown.

6.1 Orthogonal projections [i](#)

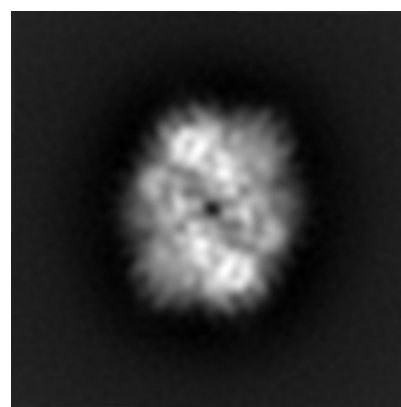
6.1.1 Primary map



X



Y

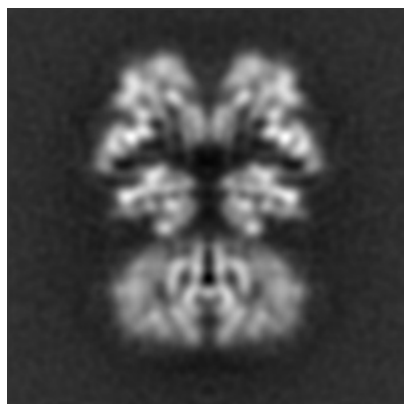


Z

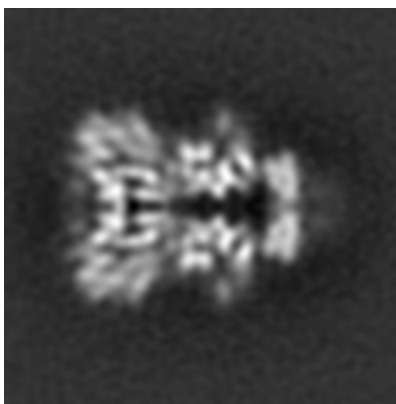
The images above show the map projected in three orthogonal directions.

6.2 Central slices [i](#)

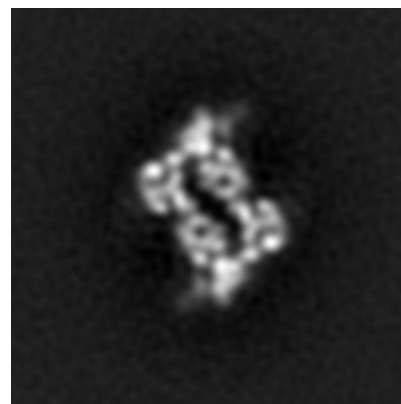
6.2.1 Primary map



X Index: 120



Y Index: 120

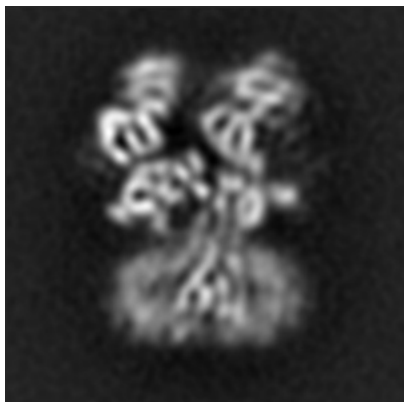


Z Index: 120

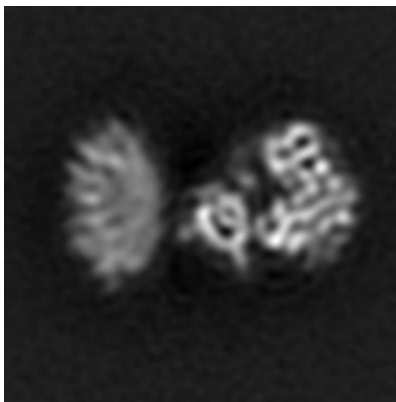
The images above show central slices of the map in three orthogonal directions.

6.3 Largest variance slices [i](#)

6.3.1 Primary map



X Index: 129



Y Index: 156

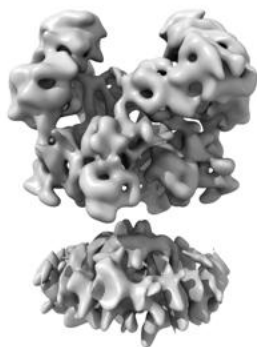


Z Index: 172

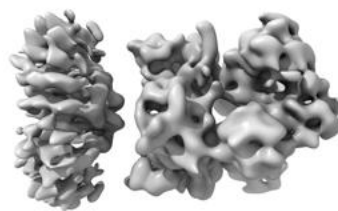
The images above show the largest variance slices of the map in three orthogonal directions.

6.4 Orthogonal surface views [i](#)

6.4.1 Primary map



X



Y



Z

The images above show the 3D surface view of the map at the recommended contour level 3.0. These images, in conjunction with the slice images, may facilitate assessment of whether an appropriate contour level has been provided.

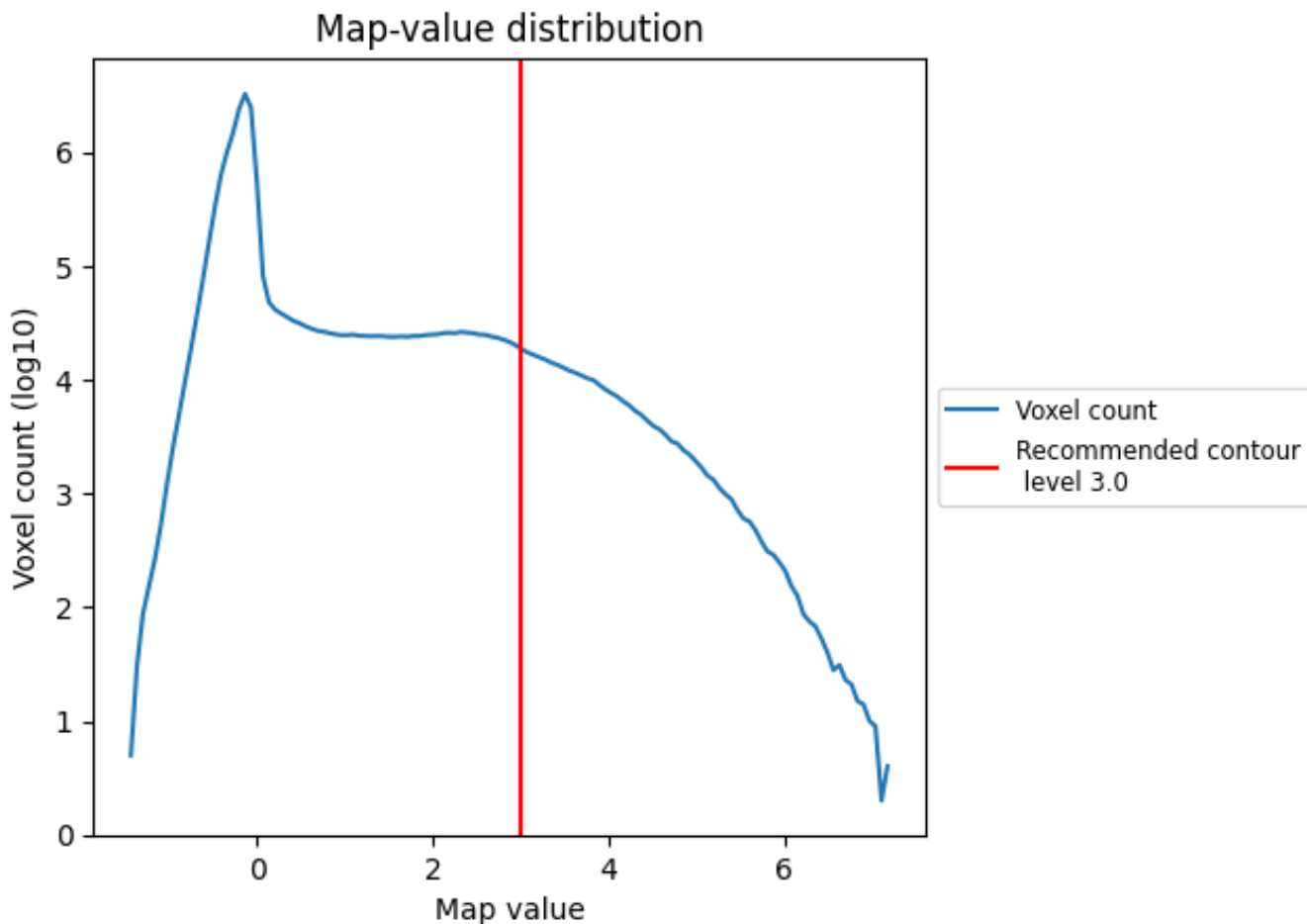
6.5 Mask visualisation

This section was not generated. No masks/segmentation were deposited.

7 Map analysis [i](#)

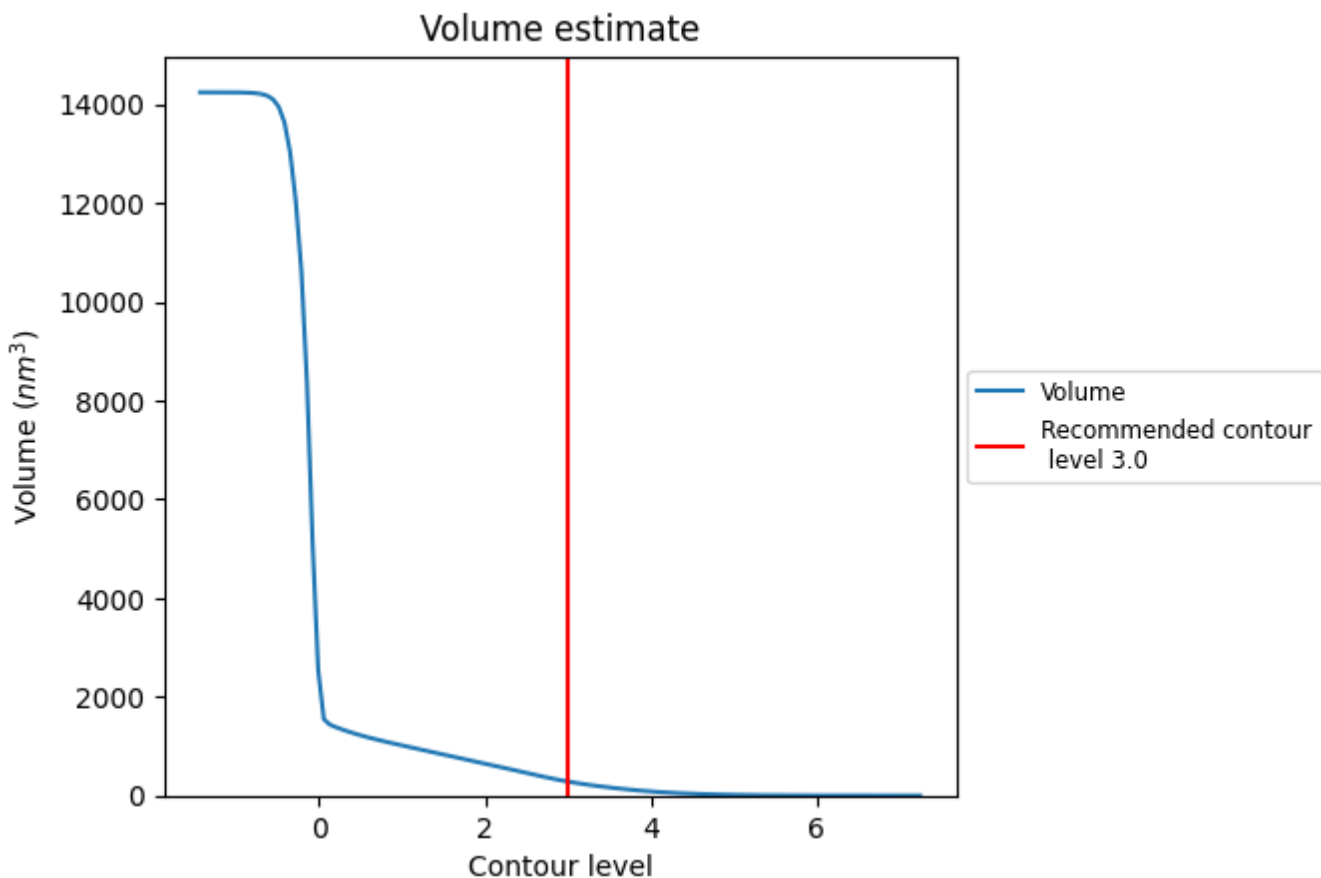
This section contains the results of statistical analysis of the map.

7.1 Map-value distribution [i](#)



The map-value distribution is plotted in 128 intervals along the x-axis. The y-axis is logarithmic. A spike in this graph at zero usually indicates that the volume has been masked.

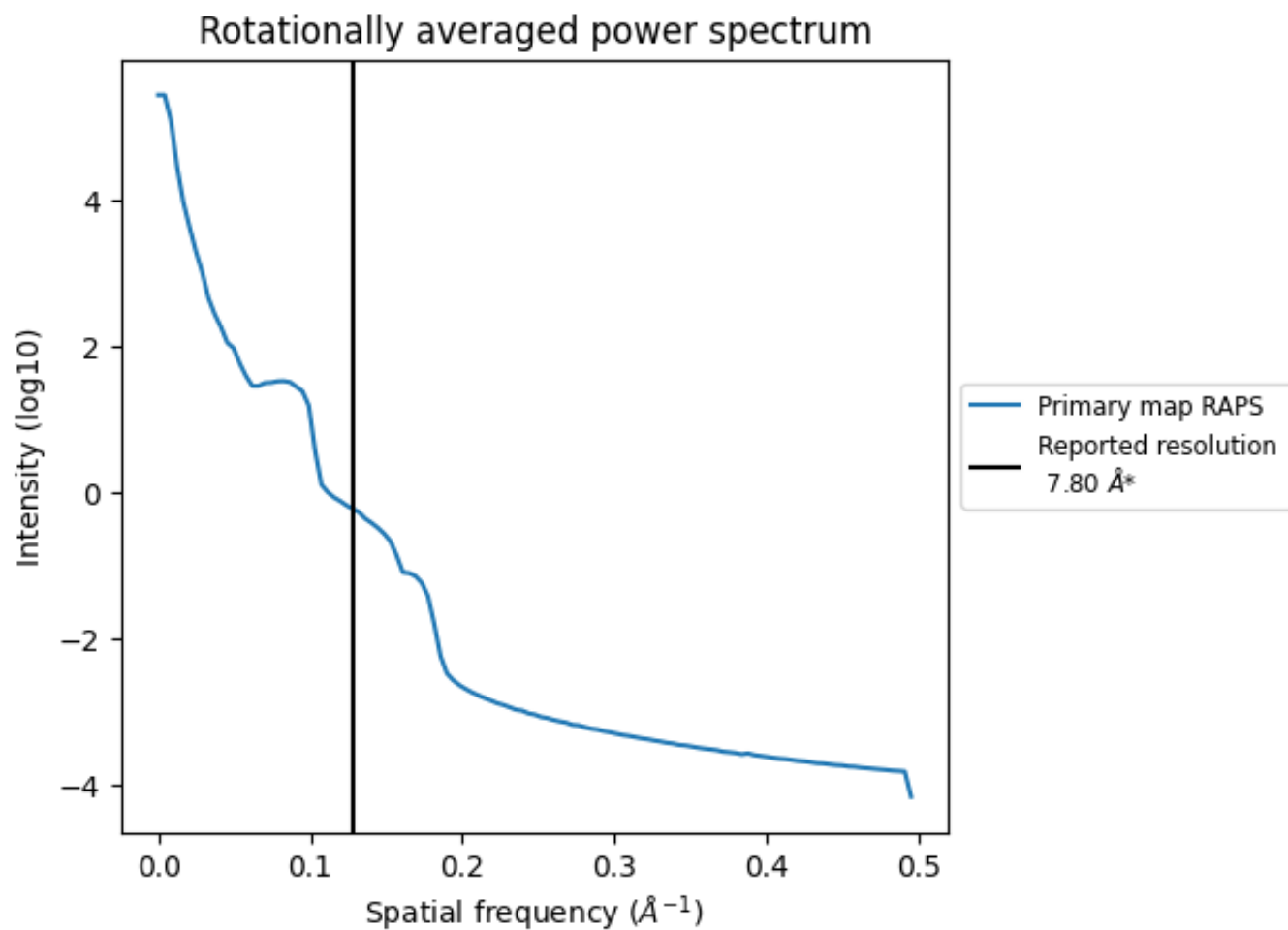
7.2 Volume estimate [i](#)



The volume at the recommended contour level is 283 nm^3 ; this corresponds to an approximate mass of 256 kDa.

The volume estimate graph shows how the enclosed volume varies with the contour level. The recommended contour level is shown as a vertical line and the intersection between the line and the curve gives the volume of the enclosed surface at the given level.

7.3 Rotationally averaged power spectrum [i](#)



*Reported resolution corresponds to spatial frequency of 0.128 Å⁻¹

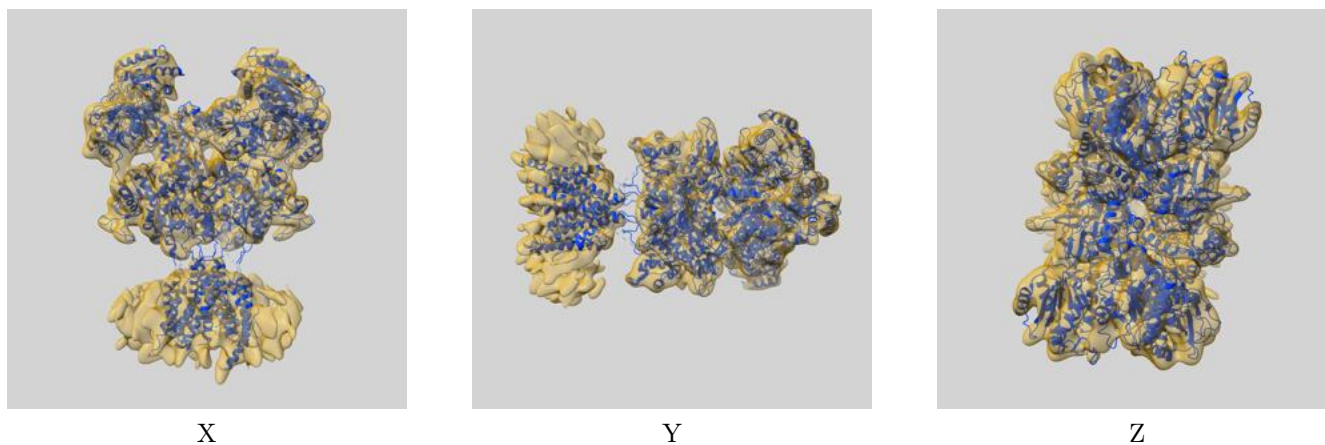
8 Fourier-Shell correlation

This section was not generated. No FSC curve or half-maps provided.

9 Map-model fit [i](#)

This section contains information regarding the fit between EMDB map EMD-9717 and PDB model 6IRH. Per-residue inclusion information can be found in section 3 on page 4.

9.1 Map-model overlay [i](#)



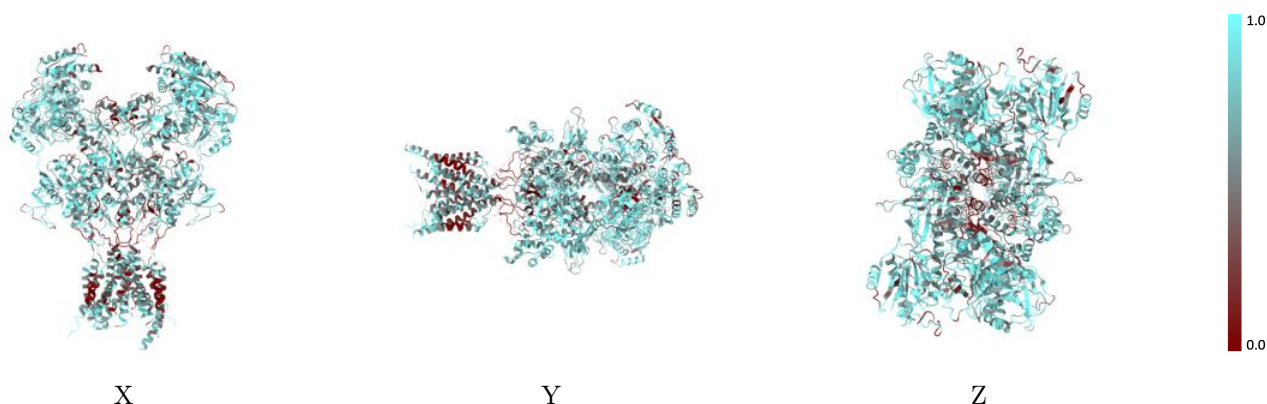
The images above show the 3D surface view of the map at the recommended contour level 3.0 at 50% transparency in yellow overlaid with a ribbon representation of the model coloured in blue. These images allow for the visual assessment of the quality of fit between the atomic model and the map.

9.2 Q-score mapped to coordinate model [i](#)



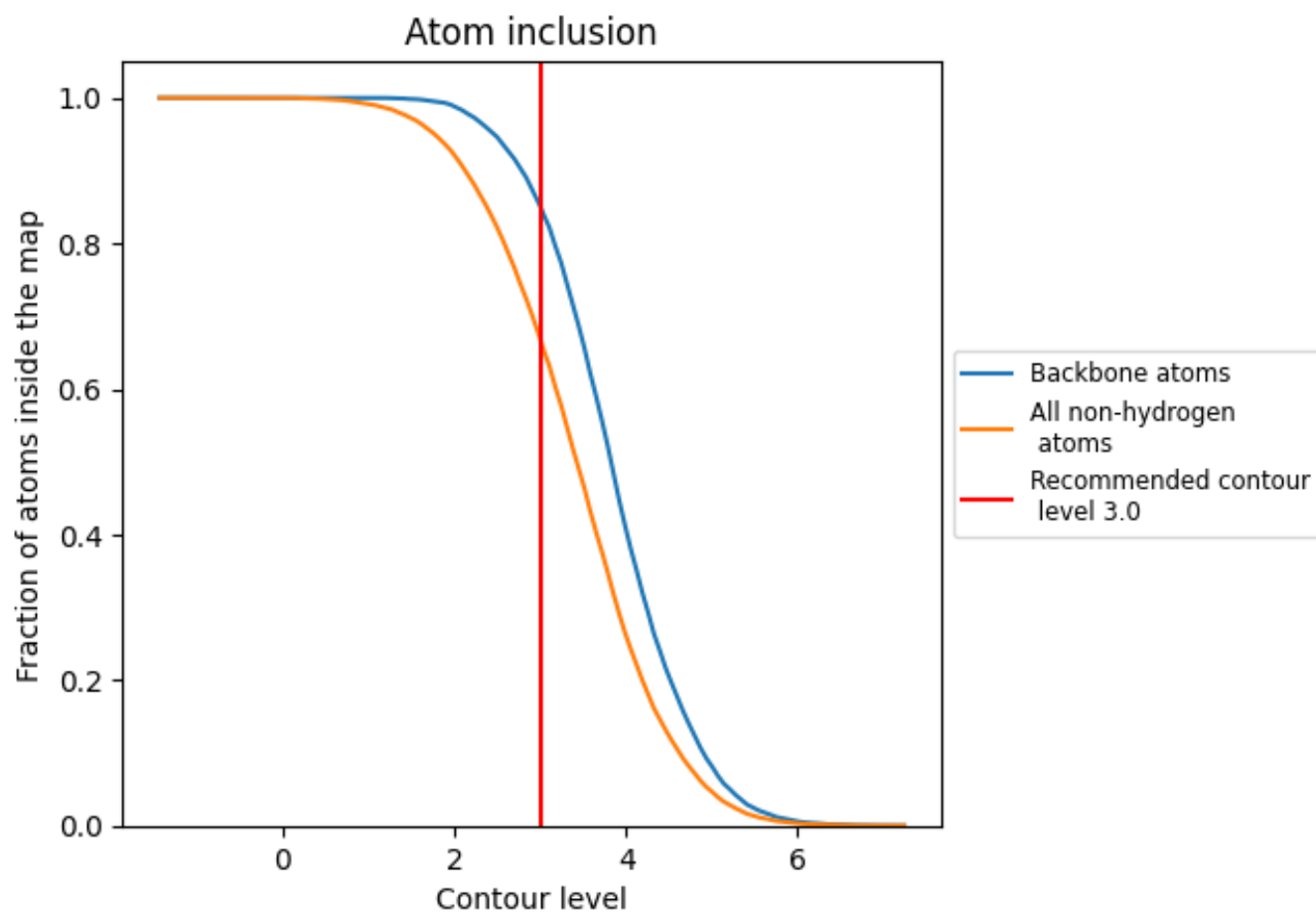
The images above show the model with each residue coloured according to its Q-score. This shows their resolvability in the map with higher Q-score values reflecting better resolvability. Please note: Q-score is calculating the resolvability of atoms, and thus high values are only expected at resolutions at which atoms can be resolved. Low Q-score values may therefore be expected for many entries.

9.3 Atom inclusion mapped to coordinate model [i](#)



The images above show the model with each residue coloured according to its atom inclusion. This shows to what extent they are inside the map at the recommended contour level (3.0).









9.4 Atom inclusion [i](#)



At the recommended contour level, 85% of all backbone atoms, 67% of all non-hydrogen atoms, are inside the map.

9.5 Map-model fit summary [i](#)

The table lists the average atom inclusion at the recommended contour level (3.0) and Q-score for the entire model and for each chain.

Chain	Atom inclusion	Q-score
All	 0.6693	 0.1710
A	 0.6907	 0.1700
B	 0.6512	 0.1740
C	 0.6909	 0.1680
D	 0.6423	 0.1730

