



# wwPDB X-ray Structure Validation Summary Report ⓘ

May 14, 2026 – 07:36 PM EDT

PDB ID : 7IOP / pdb\_00007iop  
Title : Crystal structure of A2A in complex with FU163-33  
Authors : Huang, C.-Y.; Cheng, R.Y.K.; Metz, A.  
Deposited on : 2025-08-21  
Resolution : 1.92 Å(reported)

This is a wwPDB X-ray Structure Validation Summary Report for a publicly released PDB entry.

We welcome your comments at [validation@mail.wwpdb.org](mailto:validation@mail.wwpdb.org)

A user guide is available at

<https://www.wwpdb.org/validation/2017/XrayValidationReportHelp>

with specific help available everywhere you see the ⓘ symbol.

The types of validation reports are described at

<http://www.wwpdb.org/validation/2017/FAQs#types>.

---

The following versions of software and data (see [references ⓘ](#)) were used in the production of this report:

MolProbity : 4-5-2 with Phenix2.0  
Mogul : 2022.3.0, CSD as543be (2022)  
Xtriage (Phenix) : 2.0  
EDS : 3.0  
Buster-report : wwPDB partial adaption of 1.1.7 (2018)  
Percentile statistics : 20250101.v01 (using entries in the PDB archive January 1st 2025)  
CCP4 : 9.0.010 (Gargrove)  
Density-Fitness : 1.0.12  
Ideal geometry (proteins) : Engh & Huber (2001)  
Ideal geometry (DNA, RNA) : Parkinson et al. (1996)  
Validation Pipeline (wwPDB-VP) : 2.49

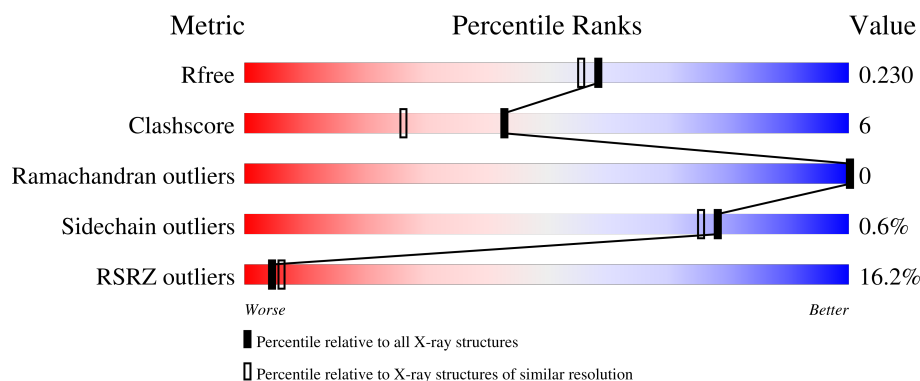
# 1 Overall quality at a glance

The following experimental techniques were used to determine the structure:

*X-RAY DIFFRACTION*

The reported resolution of this entry is 1.92 Å.

Percentile scores (ranging between 0-100) for global validation metrics of the entry are shown in the following graphic. The table shows the number of entries on which the scores are based.



Metric	Whole archive (#Entries)	Similar resolution (#Entries, resolution range(Å))
$R_{free}$	180053	1188 (1.92-1.92)
Clashscore	190562	1209 (1.92-1.92)
Ramachandran outliers	187476	1195 (1.92-1.92)
Sidechain outliers	187428	1195 (1.92-1.92)
RSRZ outliers	180081	1188 (1.92-1.92)

The table below summarises the geometric issues observed across the polymeric chains and their fit to the electron density. The red, orange, yellow and green segments of the lower bar indicate the fraction of residues that contain outliers for  $\geq 3$ , 2, 1 and 0 types of geometric quality criteria respectively. A grey segment represents the fraction of residues that are not modelled. The numeric value for each fraction is indicated below the corresponding segment, with a dot representing fractions  $\leq 5\%$ . The upper red bar (where present) indicates the fraction of residues that have poor fit to the electron density. The numeric value is given above the bar.

Mol	Chain	Length	Quality of chain
1	A	433	

The following table lists non-polymeric compounds, carbohydrate monomers and non-standard residues in protein, DNA, RNA chains that are outliers for geometric or electron-density-fit criteria:

Mol	Type	Chain	Res	Chirality	Geometry	Clashes	Electron density
3	TEP	A	1202	-	X	-	-

## 2 Entry composition

There are 9 unique types of molecules in this entry. The entry contains 3837 atoms, of which 0 are hydrogens and 0 are deuteriums.

In the tables below, the ZeroOcc column contains the number of atoms modelled with zero occupancy, the AltConf column contains the number of residues with at least one atom in alternate conformation and the Trace column contains the number of residues modelled with at most 2 atoms.

- Molecule 1 is a protein called Adenosine receptor A2a/Soluble cytochrome b562/Adenosine receptor A2a chimera.

Mol	Chain	Residues	Atoms					ZeroOcc	AltConf	Trace
1	A	390	Total	C	N	O	S	0	13	0
			3126	2035	532	536	23			

There are 35 discrepancies between the modelled and reference sequences:

Chain	Residue	Modelled	Actual	Comment	Reference
A	-8	ASP	-	expression tag	UNP P29274
A	-7	TYR	-	expression tag	UNP P29274
A	-6	LYS	-	expression tag	UNP P29274
A	-5	ASP	-	expression tag	UNP P29274
A	-4	ASP	-	expression tag	UNP P29274
A	-3	ASP	-	expression tag	UNP P29274
A	-2	ASP	-	expression tag	UNP P29274
A	-1	GLY	-	expression tag	UNP P29274
A	0	ALA	-	expression tag	UNP P29274
A	1	PRO	-	expression tag	UNP P29274
A	54	LEU	ALA	engineered mutation	UNP P29274
A	88	ALA	THR	engineered mutation	UNP P29274
A	107	ALA	ARG	engineered mutation	UNP P29274
A	122	ALA	LYS	engineered mutation	UNP P29274
A	154	ALA	ASN	engineered mutation	UNP P29274
A	202	ALA	LEU	engineered mutation	UNP P29274
A	1007	TRP	MET	conflict	UNP P0ABE7
A	1102	ILE	-	linker	UNP P0ABE7
A	1103	GLN	-	linker	UNP P0ABE7
A	1104	LYS	-	linker	UNP P0ABE7
A	1105	TYR	-	linker	UNP P0ABE7
A	1106	LEU	-	linker	UNP P0ABE7
A	235	ALA	LEU	engineered mutation	UNP P29274
A	239	ALA	VAL	engineered mutation	UNP P29274
A	318	ALA	-	expression tag	UNP P29274
A	319	HIS	-	expression tag	UNP P29274

*Continued on next page...*

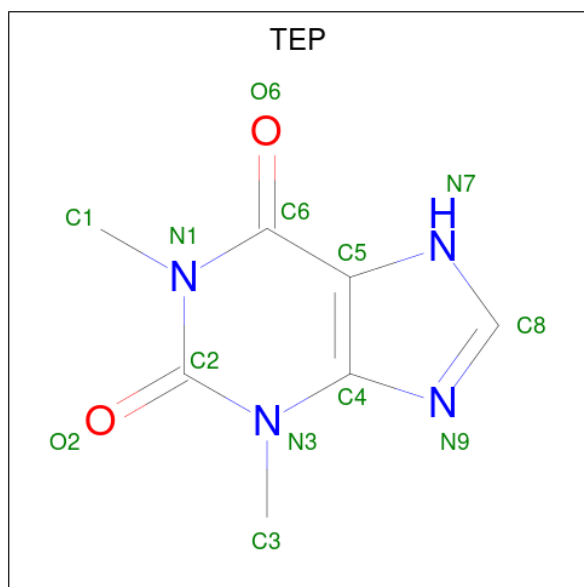
Continued from previous page...

Chain	Residue	Modelled	Actual	Comment	Reference
A	320	HIS	-	expression tag	UNP P29274
A	321	HIS	-	expression tag	UNP P29274
A	322	HIS	-	expression tag	UNP P29274
A	323	HIS	-	expression tag	UNP P29274
A	324	HIS	-	expression tag	UNP P29274
A	325	HIS	-	expression tag	UNP P29274
A	326	HIS	-	expression tag	UNP P29274
A	327	HIS	-	expression tag	UNP P29274
A	328	HIS	-	expression tag	UNP P29274

- Molecule 2 is SODIUM ION (CCD ID: NA) (formula: Na).

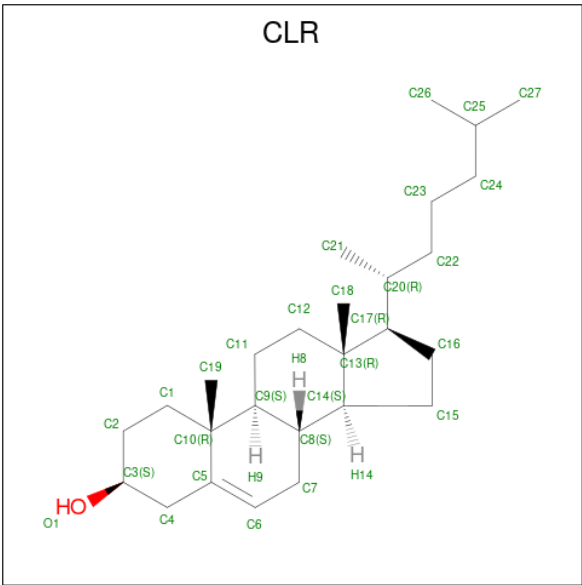
Mol	Chain	Residues	Atoms		ZeroOcc	AltConf
2	A	1	Total	Na	0	0
			1	1		

- Molecule 3 is THEOPHYLLINE (CCD ID: TEP) (formula: C<sub>7</sub>H<sub>8</sub>N<sub>4</sub>O<sub>2</sub>) (labeled as "Ligand of Interest" by depositor).



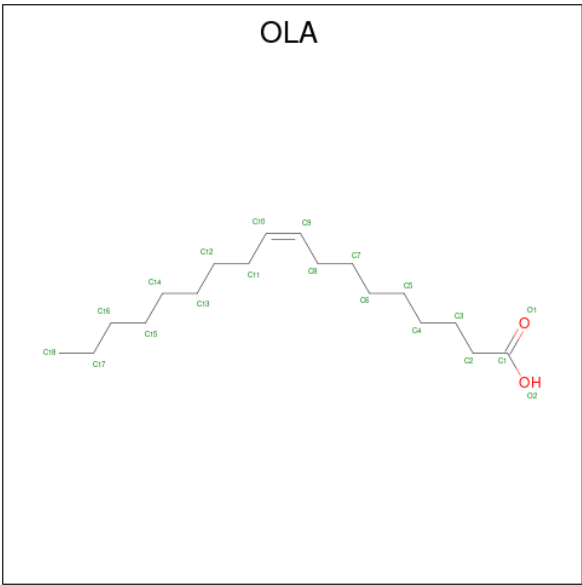
Mol	Chain	Residues	Atoms				ZeroOcc	AltConf
3	A	1	Total	C	N	O	0	0
			13	7	4	2		

- Molecule 4 is CHOLESTEROL (CCD ID: CLR) (formula: C<sub>27</sub>H<sub>46</sub>O).



Mol	Chain	Residues	Atoms			ZeroOcc	AltConf
4	A	1	Total	C	O	0	0
			28	27	1		
4	A	1	Total	C	O	0	0
			28	27	1		
4	A	1	Total	C	O	0	0
			28	27	1		

- Molecule 5 is OLEIC ACID (CCD ID: OLA) (formula:  $C_{18}H_{34}O_2$ ).



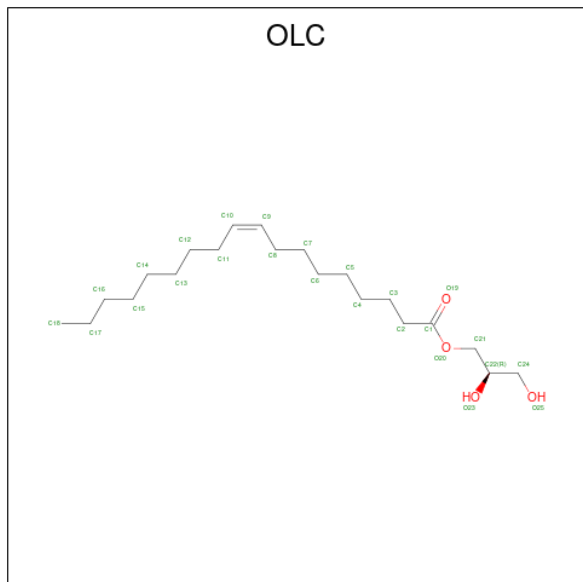
Mol	Chain	Residues	Atoms			ZeroOcc	AltConf
5	A	1	Total	C	O	0	0
			20	18	2		

Continued on next page...

*Continued from previous page...*

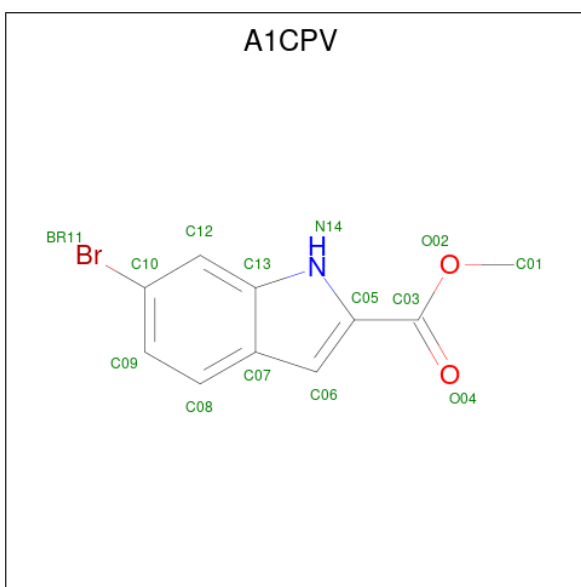
Mol	Chain	Residues	Atoms	ZeroOcc	AltConf
5	A	1	Total C O 10 8 2	0	0
5	A	1	Total C O 9 7 2	0	0
5	A	1	Total C O 18 16 2	0	0
5	A	1	Total C O 20 18 2	0	0
5	A	1	Total C O 20 18 2	0	0
5	A	1	Total C O 12 10 2	0	0
5	A	1	Total C O 8 6 2	0	0
5	A	1	Total C O 15 13 2	0	0
5	A	1	Total C O 11 9 2	0	0
5	A	1	Total C O 19 17 2	0	0
5	A	1	Total C O 20 18 2	0	0
5	A	1	Total C 12 12	0	0
5	A	1	Total C 10 10	0	0
5	A	1	Total C 11 11	0	0
5	A	1	Total C 12 12	0	0
5	A	1	Total C 9 9	0	0
5	A	1	Total C 8 8	0	0
5	A	1	Total C O 15 13 2	0	0
5	A	1	Total C 15 15	0	0
5	A	1	Total C O 13 11 2	0	0
5	A	1	Total C O 20 18 2	0	0

- Molecule 6 is (2R)-2,3-dihydroxypropyl (9Z)-octadec-9-enoate (CCD ID: OLC) (formula:  $C_{21}H_{40}O_4$ ).



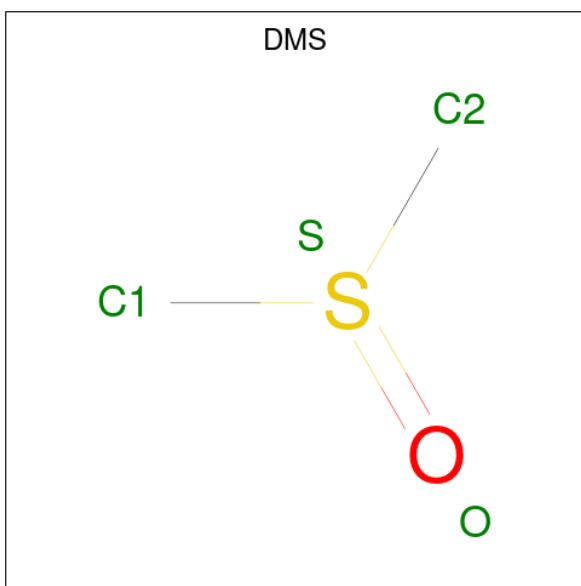
Mol	Chain	Residues	Atoms			ZeroOcc	AltConf
6	A	1	Total	C	O	0	0
			16	12	4		
6	A	1	Total	C	O	0	0
			17	13	4		
6	A	1	Total	C	O	0	0
			23	19	4		
6	A	1	Total	C	O	0	0
			23	19	4		
6	A	1	Total	C	O	0	0
			23	19	4		
6	A	1	Total	C	O	0	0
			18	14	4		
6	A	1	Total	C	O	0	0
			16	12	4		

- Molecule 7 is methyl 6-bromo-1H-indole-2-carboxylate (CCD ID: A1CPV) (formula:  $C_{10}H_8BrNO_2$ ) (labeled as "Ligand of Interest" by depositor).



Mol	Chain	Residues	Atoms					ZeroOcc	AltConf
7	A	1	Total	Br	C	N	O	0	0
			14	1	10	1	2		

- Molecule 8 is DIMETHYL SULFOXIDE (CCD ID: DMS) (formula:  $C_2H_6OS$ ).



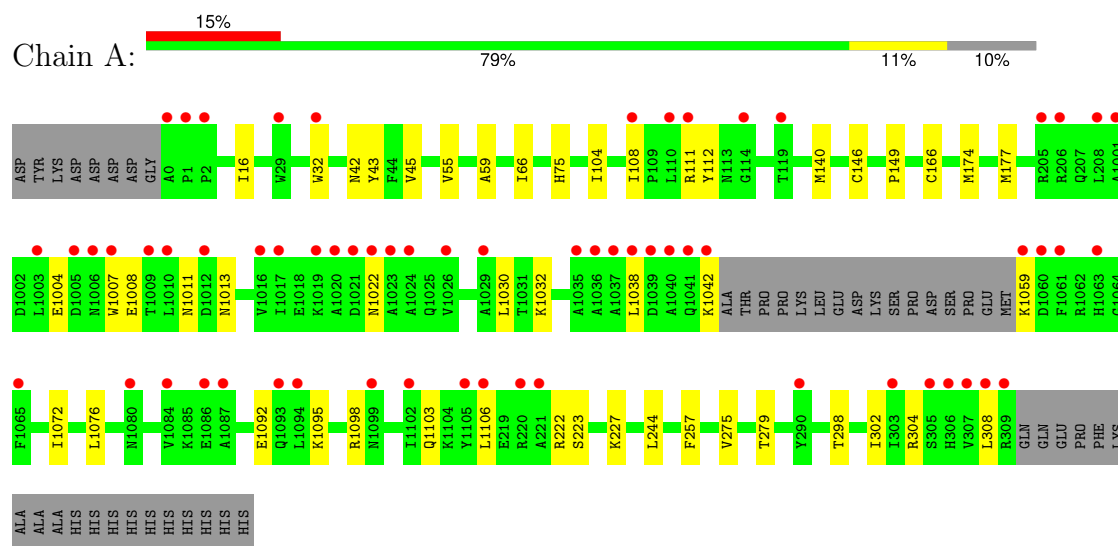
Mol	Chain	Residues	Atoms				ZeroOcc	AltConf
8	A	1	Total	C	O	S	0	1
			4	2	1	1		
8	A	1	Total	C	O	S	0	1
			4	2	1	1		
8	A	1	Total	C	O	S	0	1
			4	2	1	1		

- Molecule 9 is water.

Mol	Chain	Residues	Atoms		ZeroOcc	AltConf
9	A	144	Total 144	O 144	0	0



- Molecule 1: Adenosine receptor A2a/Soluble cytochrome b562/Adenosine receptor A2a chimera



## 4 Data and refinement statistics

Property	Value	Source
Space group	C 2 2 21	Depositor
Cell constants a, b, c, $\alpha$ , $\beta$ , $\gamma$	39.27Å 179.73Å 140.54Å 90.00° 90.00° 90.00°	Depositor
Resolution (Å)	55.36 – 1.92 55.36 – 1.92	Depositor EDS
% Data completeness (in resolution range)	73.4 (55.36-1.92) 73.7 (55.36-1.92)	Depositor EDS
$R_{merge}$	0.22	Depositor
$R_{sym}$	(Not available)	Depositor
$\langle I/\sigma(I) \rangle$ <sup>1</sup>	1.02 (at 1.92Å)	Xtriage
Refinement program	PHENIX (1.20_4459: ???)	Depositor
R, $R_{free}$	0.193 , 0.230 0.193 , 0.230	Depositor DCC
$R_{free}$ test set	1416 reflections (3.64%)	wwPDB-VP
Wilson B-factor (Å <sup>2</sup> )	25.0	Xtriage
Anisotropy	0.077	Xtriage
Bulk solvent $k_{sol}$ (e/Å <sup>3</sup> ), $B_{sol}$ (Å <sup>2</sup> )	0.34 , 61.4	EDS
L-test for twinning <sup>2</sup>	$\langle  L  \rangle = 0.49$ , $\langle L^2 \rangle = 0.32$	Xtriage
Estimated twinning fraction	No twinning to report.	Xtriage
$F_o, F_c$ correlation	0.94	EDS
Total number of atoms	3837	wwPDB-VP
Average B, all atoms (Å <sup>2</sup> )	39.0	wwPDB-VP

Xtriage's analysis on translational NCS is as follows: *The largest off-origin peak in the Patterson function is 6.48% of the height of the origin peak. No significant pseudotranslation is detected.*

<sup>1</sup>Intensities estimated from amplitudes.

<sup>2</sup>Theoretical values of  $\langle |L| \rangle$ ,  $\langle L^2 \rangle$  for acentric reflections are 0.5, 0.333 respectively for untwinned datasets, and 0.375, 0.2 for perfectly twinned datasets.

## 5 Model quality [i](#)

### 5.1 Standard geometry [i](#)

Bond lengths and bond angles in the following residue types are not validated in this section: OLA, OLC, DMS, A1CPV, TEP, CLR, NA

The Z score for a bond length (or angle) is the number of standard deviations the observed value is removed from the expected value. A bond length (or angle) with  $|Z| > 5$  is considered an outlier worth inspection. RMSZ is the root-mean-square of all Z scores of the bond lengths (or angles).

Mol	Chain	Bond lengths		Bond angles	
		RMSZ	# Z  >5	RMSZ	# Z  >5
1	A	0.14	0/3191	0.35	0/4338

There are no bond length outliers.

There are no bond angle outliers.

There are no chirality outliers.

There are no planarity outliers.

### 5.2 Too-close contacts [i](#)

In the following table, the Non-H and H(model) columns list the number of non-hydrogen atoms and hydrogen atoms in the chain respectively. The H(added) column lists the number of hydrogen atoms added and optimized by MolProbity. The Clashes column lists the number of clashes within the asymmetric unit, whereas Symm-Clashes lists symmetry-related clashes.

Mol	Chain	Non-H	H(model)	H(added)	Clashes	Symm-Clashes
1	A	3126	0	3206	32	0
2	A	1	0	0	0	0
3	A	13	0	8	0	0
4	A	84	0	138	0	0
5	A	307	0	459	16	0
6	A	136	0	186	7	0
7	A	14	0	0	0	0
8	A	12	0	18	0	0
9	A	144	0	0	1	0
All	All	3837	0	4015	48	0

The all-atom clashscore is defined as the number of clashes found per 1000 atoms (including hydrogen atoms). The all-atom clashscore for this structure is 6.

The worst 5 of 48 close contacts within the same asymmetric unit are listed below, sorted by their clash magnitude.

Atom-1	Atom-2	Interatomic distance (Å)	Clash overlap (Å)
1:A:223:SER:O	1:A:227:LYS:HG2	1.99	0.62
1:A:1059:LYS:N	9:A:1302:HOH:O	2.33	0.61
1:A:1007:TRP:CH2	1:A:1103:GLN:HG3	2.38	0.59
1:A:1011:ASN:ND2	1:A:1098:ARG:HH11	2.02	0.58
5:A:1210:OLA:H21	5:A:1217:OLA:H32	1.86	0.57

There are no symmetry-related clashes.

## 5.3 Torsion angles [i](#)

### 5.3.1 Protein backbone [i](#)

In the following table, the Percentiles column shows the percent Ramachandran outliers of the chain as a percentile score with respect to all X-ray entries followed by that with respect to entries of similar resolution.

The Analysed column shows the number of residues for which the backbone conformation was analysed, and the total number of residues.

Mol	Chain	Analysed	Favoured	Allowed	Outliers	Percentiles	
1	A	399/433 (92%)	393 (98%)	6 (2%)	0	100	100

There are no Ramachandran outliers to report.

### 5.3.2 Protein sidechains [i](#)

In the following table, the Percentiles column shows the percent sidechain outliers of the chain as a percentile score with respect to all X-ray entries followed by that with respect to entries of similar resolution.

The Analysed column shows the number of residues for which the sidechain conformation was analysed, and the total number of residues.

Mol	Chain	Analysed	Rotameric	Outliers	Percentiles	
1	A	329/354 (93%)	327 (99%)	2 (1%)	78	75

All (2) residues with a non-rotameric sidechain are listed below:

Mol	Chain	Res	Type
1	A	1022	ASN
1	A	1076	LEU

Sometimes sidechains can be flipped to improve hydrogen bonding and reduce clashes. All (1) such sidechains are listed below:

Mol	Chain	Res	Type
1	A	1011	ASN

### 5.3.3 RNA [i](#)

There are no RNA molecules in this entry.

## 5.4 Non-standard residues in protein, DNA, RNA chains [i](#)

There are no non-standard protein/DNA/RNA residues in this entry.

## 5.5 Carbohydrates [i](#)

There are no oligosaccharides in this entry.

## 5.6 Ligand geometry [i](#)

Of 38 ligands modelled in this entry, 1 is monoatomic - leaving 37 for Mogul analysis.

In the following table, the Counts columns list the number of bonds (or angles) for which Mogul statistics could be retrieved, the number of bonds (or angles) that are observed in the model and the number of bonds (or angles) that are defined in the Chemical Component Dictionary. The Link column lists molecule types, if any, to which the group is linked. The Z score for a bond length (or angle) is the number of standard deviations the observed value is removed from the expected value. A bond length (or angle) with  $|Z| > 2$  is considered an outlier worth inspection. RMSZ is the root-mean-square of all Z scores of the bond lengths (or angles).

Mol	Type	Chain	Res	Link	Bond lengths			Bond angles		
					Counts	RMSZ	# Z  > 2	Counts	RMSZ	# Z  > 2
5	OLA	A	1224	-	14,14,19	0.68	0	14,14,19	0.99	0
6	OLC	A	1230	-	22,22,24	1.09	1 (4%)	23,23,25	1.32	3 (13%)
6	OLC	A	1233	-	17,17,24	1.26	1 (5%)	18,18,25	1.30	2 (11%)
4	CLR	A	1204	-	31,31,31	0.28	0	48,48,48	0.48	0
5	OLA	A	1221	-	11,11,19	0.38	0	10,10,19	0.80	0
5	OLA	A	1220	-	10,10,19	0.43	0	9,9,19	0.81	0

Mol	Type	Chain	Res	Link	Bond lengths			Bond angles		
					Counts	RMSZ	# Z  > 2	Counts	RMSZ	# Z  > 2
5	OLA	A	1218	-	11,11,19	0.37	0	10,10,19	0.67	0
5	OLA	A	1223	-	7,7,19	0.32	0	6,6,19	0.78	0
6	OLC	A	1228	-	15,15,24	1.30	1 (6%)	16,16,25	1.27	1 (6%)
5	OLA	A	1209	-	17,17,19	0.60	0	17,17,19	1.07	1 (5%)
5	OLA	A	1211	-	19,19,19	0.58	0	19,19,19	0.99	0
5	OLA	A	1210	-	19,19,19	0.61	0	19,19,19	0.94	0
6	OLC	A	1231	-	22,22,24	1.08	1 (4%)	23,23,25	1.31	3 (13%)
4	CLR	A	1205	-	31,31,31	0.28	0	48,48,48	0.42	0
5	OLA	A	1208	-	8,8,19	0.82	0	8,8,19	1.22	0
5	OLA	A	1206	-	19,19,19	0.60	0	19,19,19	0.98	0
5	OLA	A	1214	-	14,14,19	0.65	0	14,14,19	1.08	0
6	OLC	A	1229	-	16,16,24	1.32	1 (6%)	17,17,25	1.32	2 (11%)
5	OLA	A	1212	-	11,11,19	0.74	0	11,11,19	1.17	0
6	OLC	A	1234	-	15,15,24	1.29	1 (6%)	16,16,25	0.94	1 (6%)
7	A1CPV	A	1235	-	15,15,15	1.89	4 (26%)	21,21,21	1.78	2 (9%)
5	OLA	A	1227	-	19,19,19	0.59	0	19,19,19	1.03	0
5	OLA	A	1217	-	19,19,19	0.62	0	19,19,19	0.85	0
5	OLA	A	1225	-	14,14,19	0.35	0	13,13,19	0.70	0
4	CLR	A	1203	-	31,31,31	0.31	0	48,48,48	0.48	0
5	OLA	A	1219	-	9,9,19	0.42	0	8,8,19	0.72	0
5	OLA	A	1216	-	18,18,19	0.61	0	18,18,19	1.03	1 (5%)
5	OLA	A	1226	-	12,12,19	0.74	0	12,12,19	1.13	0
5	OLA	A	1222	-	8,8,19	0.30	0	7,7,19	0.82	0
5	OLA	A	1215	-	10,10,19	0.72	0	10,10,19	1.26	0
3	TEP	A	1202	-	14,14,14	1.84	4 (28%)	21,21,21	3.33	11 (52%)
5	OLA	A	1207	-	9,9,19	0.77	0	9,9,19	1.21	0
5	OLA	A	1213	-	7,7,19	0.86	0	7,7,19	1.23	0
6	OLC	A	1232	-	22,22,24	1.11	1 (4%)	23,23,25	1.32	2 (8%)

In the following table, the Chirals column lists the number of chiral outliers, the number of chiral centers analysed, the number of these observed in the model and the number defined in the Chemical Component Dictionary. Similar counts are reported in the Torsion and Rings columns. '-' means no outliers of that kind were identified.

Mol	Type	Chain	Res	Link	Chirals	Torsions	Rings
5	OLA	A	1224	-	-	5/12/12/17	-
6	OLC	A	1230	-	-	13/22/22/24	-
6	OLC	A	1233	-	-	9/17/17/24	-
4	CLR	A	1204	-	-	0/10/68/68	0/4/4/4
5	OLA	A	1221	-	-	5/9/9/17	-

Continued on next page...

*Continued from previous page...*

Mol	Type	Chain	Res	Link	Chirals	Torsions	Rings
5	OLA	A	1220	-	-	6/8/8/17	-
5	OLA	A	1218	-	-	4/9/9/17	-
5	OLA	A	1223	-	-	0/5/5/17	-
6	OLC	A	1228	-	-	6/15/15/24	-
5	OLA	A	1209	-	-	9/15/15/17	-
5	OLA	A	1211	-	-	8/17/17/17	-
5	OLA	A	1210	-	-	11/17/17/17	-
6	OLC	A	1231	-	-	14/22/22/24	-
4	CLR	A	1205	-	-	1/10/68/68	0/4/4/4
5	OLA	A	1208	-	-	4/6/6/17	-
5	OLA	A	1206	-	-	9/17/17/17	-
5	OLA	A	1214	-	-	4/12/12/17	-
6	OLC	A	1229	-	-	8/16/16/24	-
5	OLA	A	1212	-	-	3/9/9/17	-
6	OLC	A	1234	-	-	6/15/15/24	-
7	A1CPV	A	1235	-	-	0/6/6/6	0/2/2/2
5	OLA	A	1227	-	-	8/17/17/17	-
5	OLA	A	1217	-	-	8/17/17/17	-
5	OLA	A	1225	-	-	2/12/12/17	-
4	CLR	A	1203	-	-	0/10/68/68	0/4/4/4
5	OLA	A	1219	-	-	1/7/7/17	-
5	OLA	A	1216	-	-	4/16/16/17	-
5	OLA	A	1226	-	-	4/10/10/17	-
5	OLA	A	1222	-	-	2/6/6/17	-
5	OLA	A	1215	-	-	3/8/8/17	-
3	TEP	A	1202	-	-	-	0/2/2/2
5	OLA	A	1207	-	-	3/7/7/17	-
5	OLA	A	1213	-	-	2/5/5/17	-
6	OLC	A	1232	-	-	11/22/22/24	-

The worst 5 of 15 bond length outliers are listed below:

Mol	Chain	Res	Type	Atoms	Z	Observed(Å)	Ideal(Å)
7	A	1235	A1CPV	C05-N14	-3.98	1.32	1.38
3	A	1202	TEP	C6-N1	-3.61	1.32	1.40
7	A	1235	A1CPV	O02-C03	3.20	1.40	1.33
6	A	1228	OLC	O20-C1	3.13	1.42	1.33

*Continued on next page...*

*Continued from previous page...*

Mol	Chain	Res	Type	Atoms	Z	Observed(Å)	Ideal(Å)
6	A	1234	OLC	O20-C1	3.09	1.42	1.33

The worst 5 of 29 bond angle outliers are listed below:

Mol	Chain	Res	Type	Atoms	Z	Observed(°)	Ideal(°)
3	A	1202	TEP	C8-N9-C4	6.55	107.83	103.45
7	A	1235	A1CPV	O02-C03-C05	6.42	119.98	111.97
3	A	1202	TEP	C5-C6-N1	6.05	120.20	112.07
3	A	1202	TEP	C4-C5-N7	5.55	108.02	105.29
3	A	1202	TEP	C5-C4-N9	-5.04	108.09	111.63

There are no chirality outliers.

5 of 173 torsion outliers are listed below:

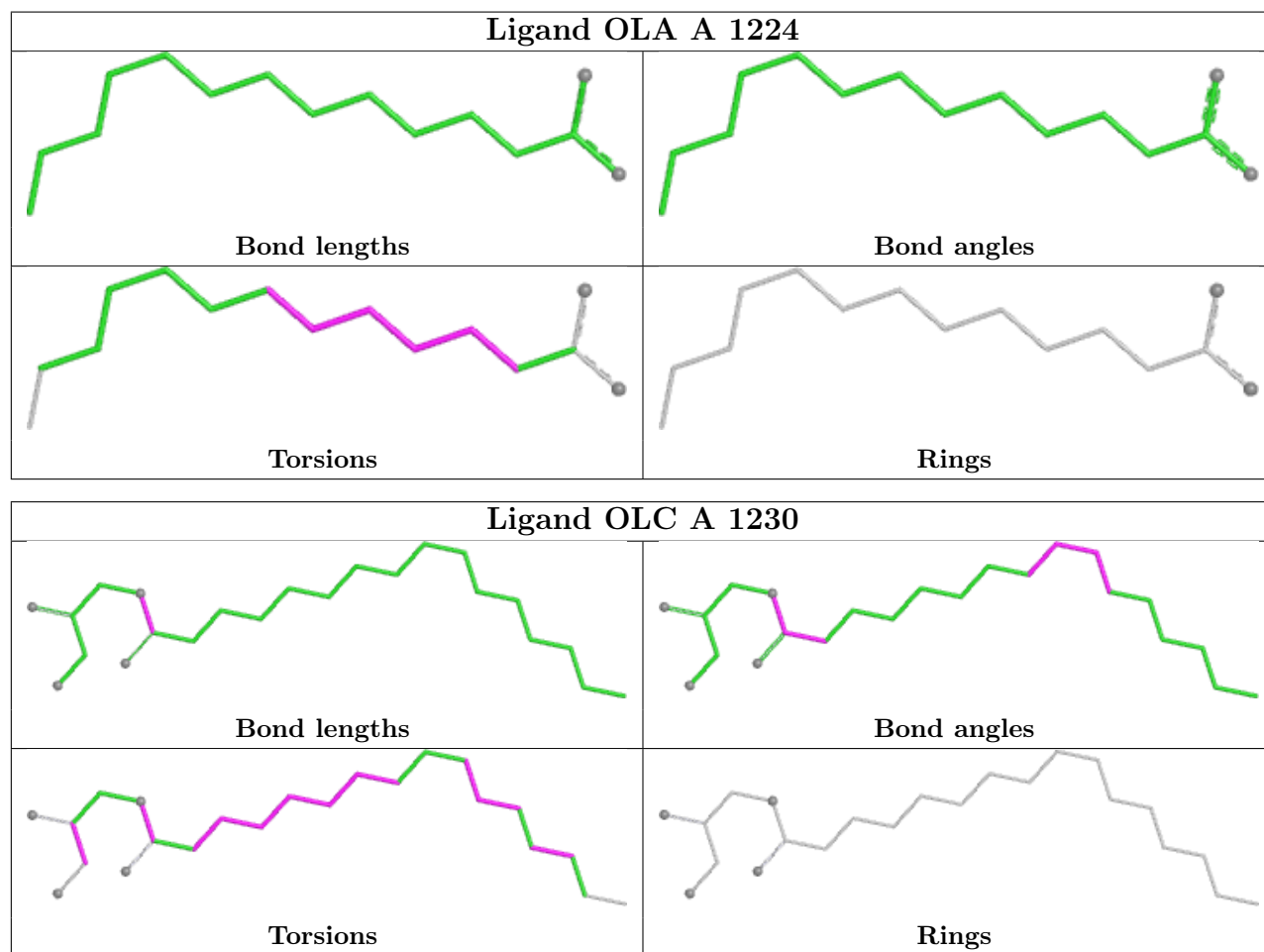
Mol	Chain	Res	Type	Atoms
5	A	1218	OLA	C6-C7-C8-C9
6	A	1230	OLC	C21-C22-C24-O25
6	A	1231	OLC	C21-C22-C24-O25
6	A	1231	OLC	O20-C21-C22-O23
6	A	1232	OLC	O20-C21-C22-C24

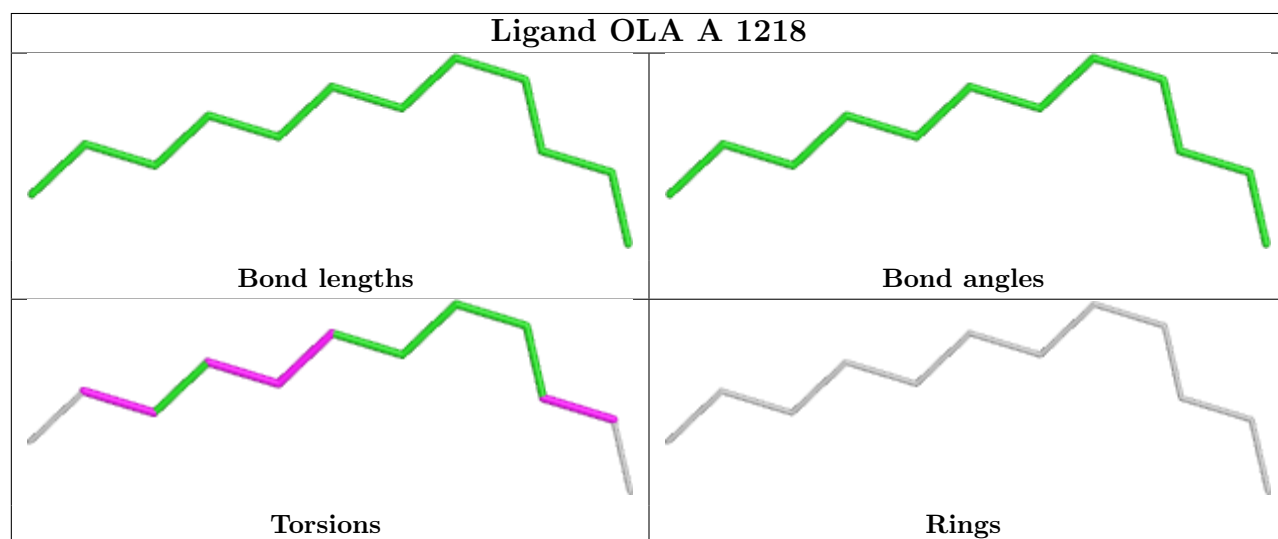
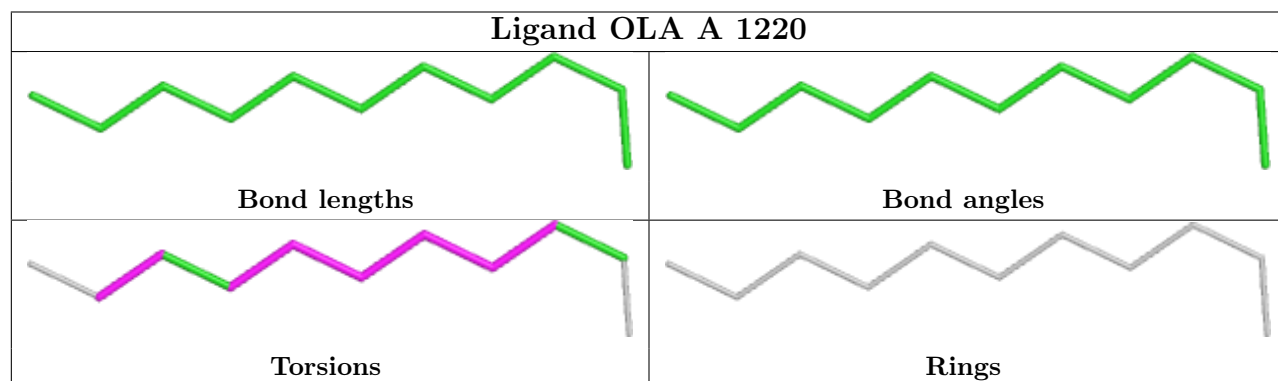
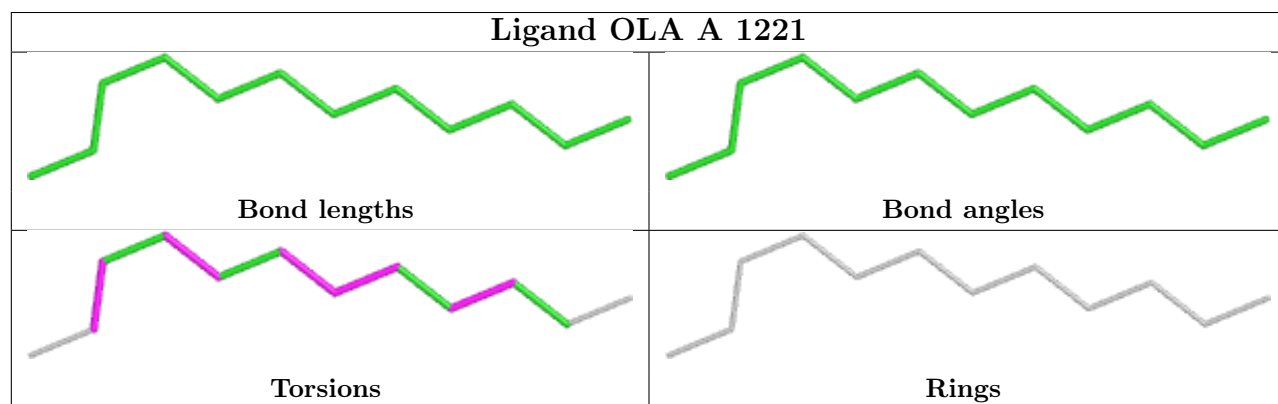
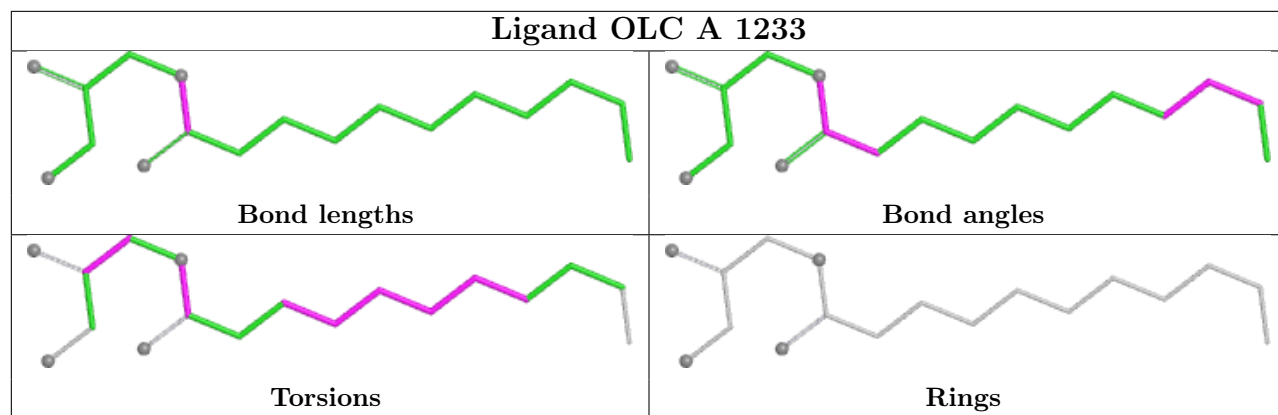
There are no ring outliers.

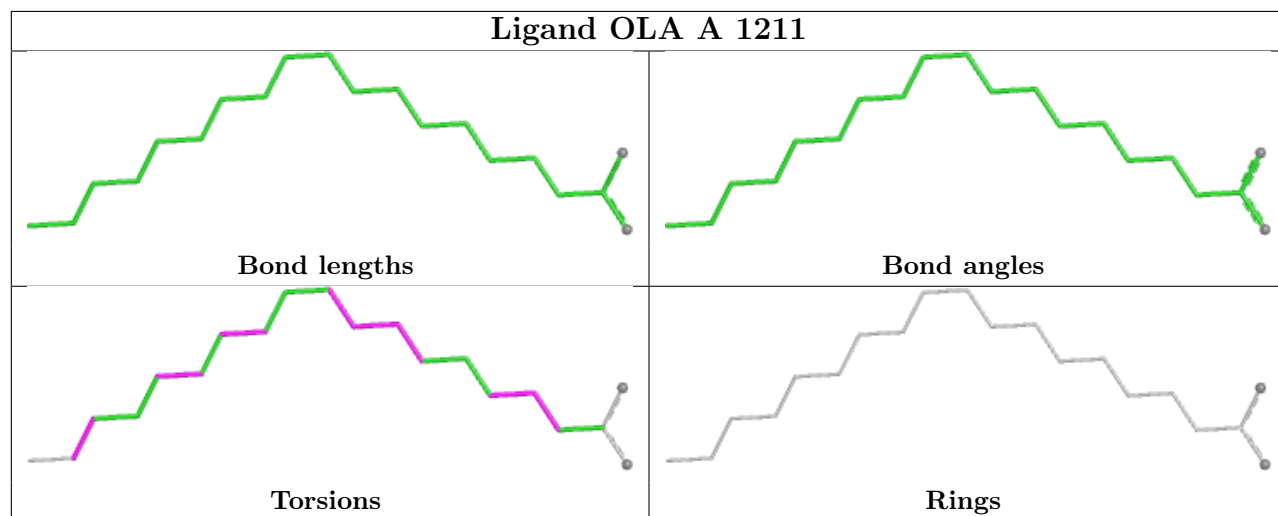
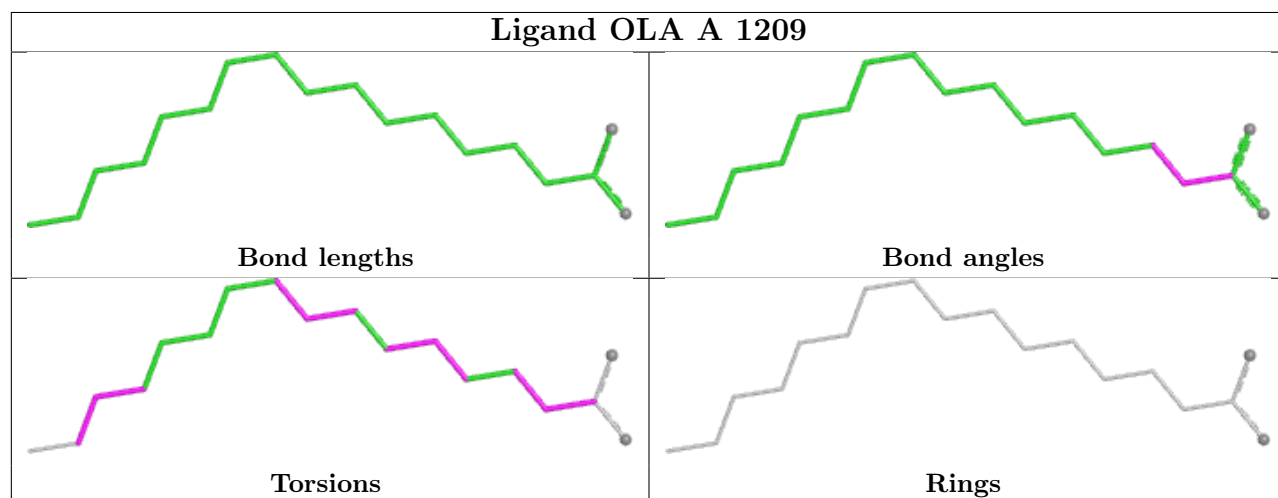
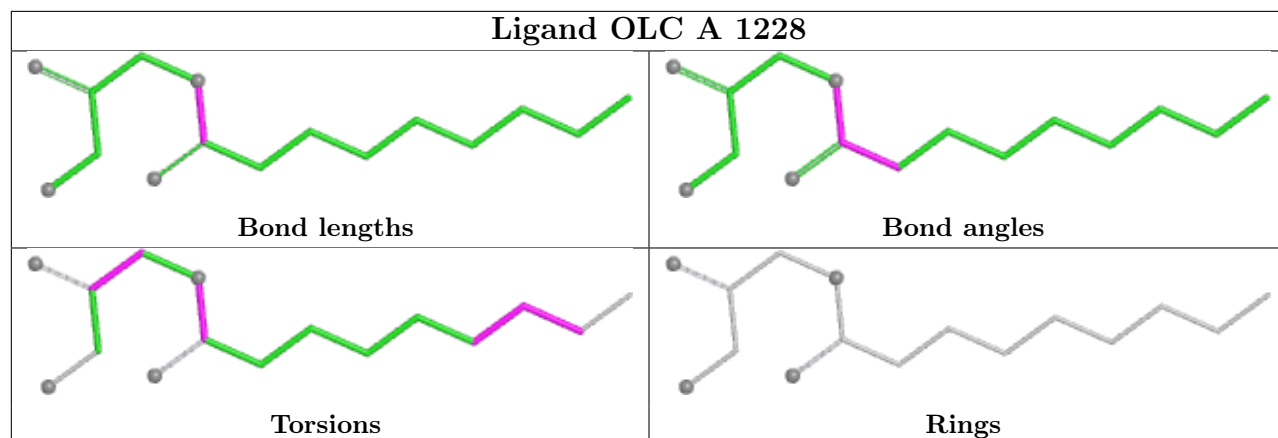
15 monomers are involved in 22 short contacts:

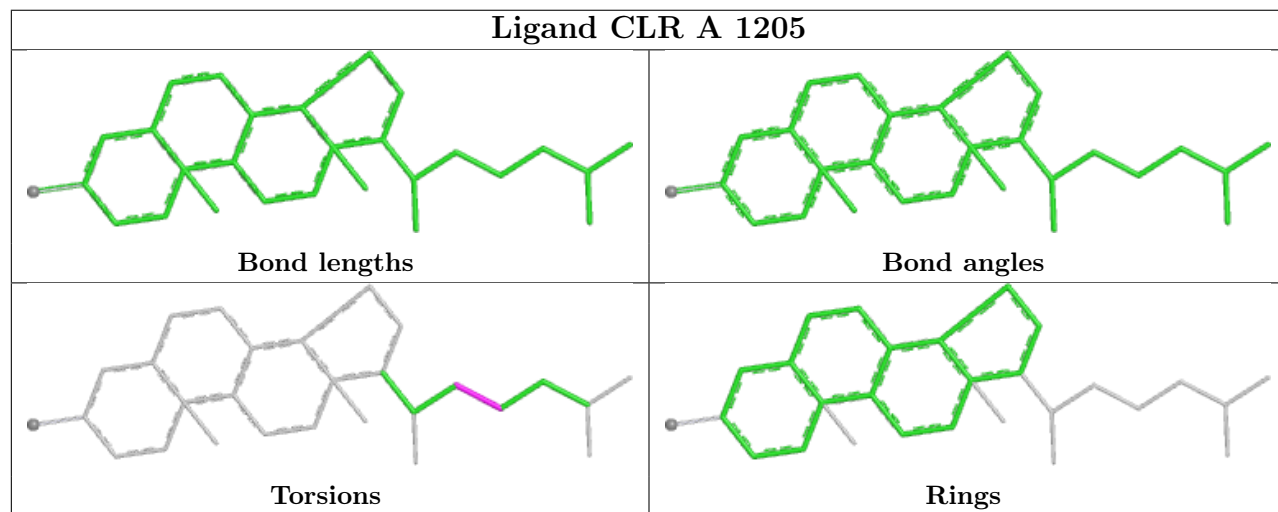
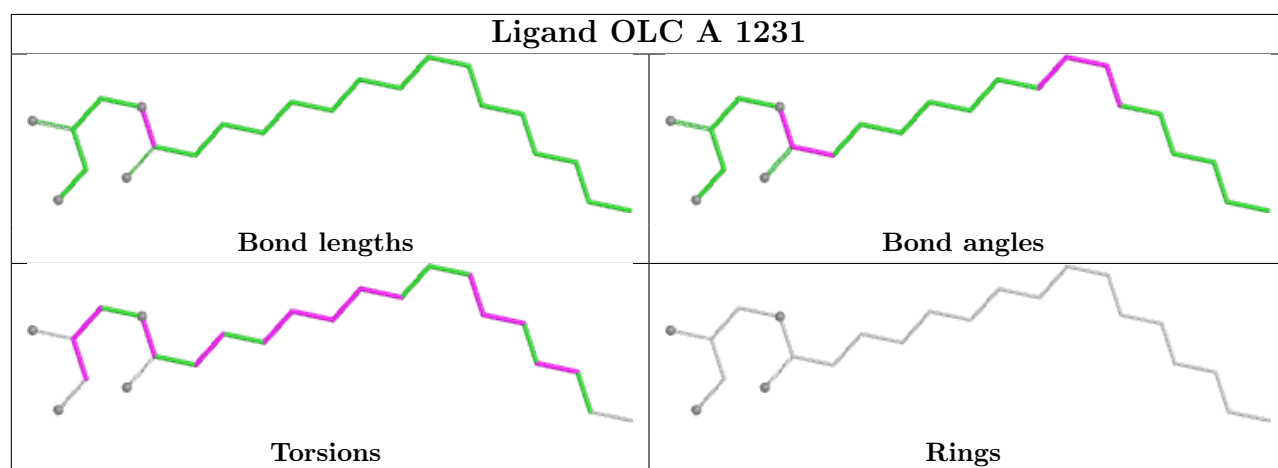
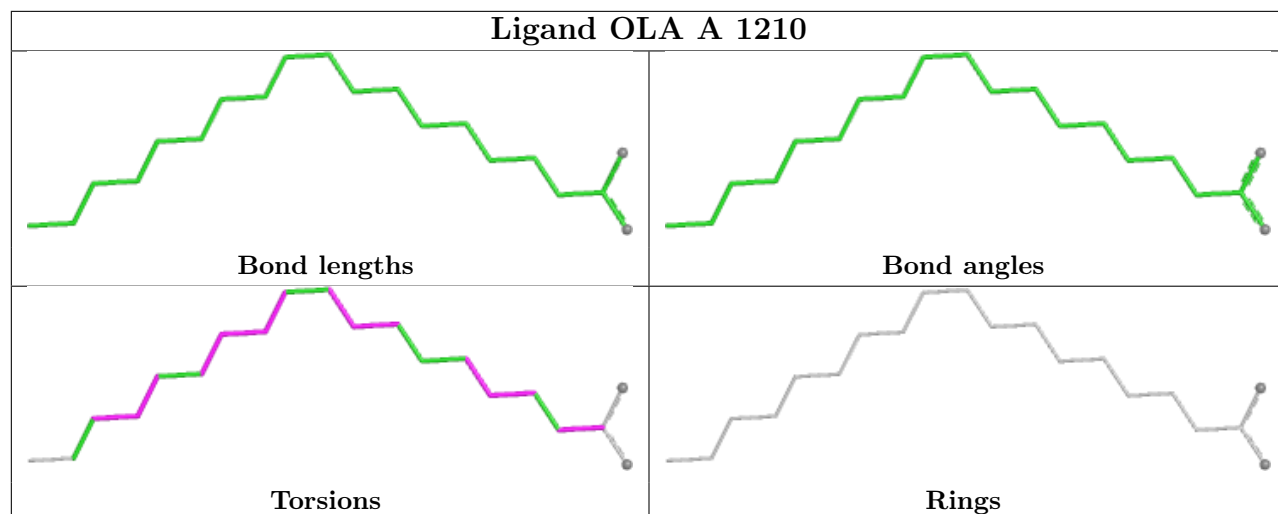
Mol	Chain	Res	Type	Clashes	Symm-Clashes
5	A	1224	OLA	1	0
6	A	1230	OLC	2	0
6	A	1233	OLC	3	0
5	A	1223	OLA	2	0
6	A	1228	OLC	1	0
5	A	1211	OLA	4	0
5	A	1210	OLA	3	0
6	A	1231	OLC	2	0
5	A	1227	OLA	2	0
5	A	1217	OLA	2	0
5	A	1225	OLA	2	0
5	A	1216	OLA	1	0
5	A	1226	OLA	3	0
5	A	1222	OLA	1	0
6	A	1232	OLC	1	0

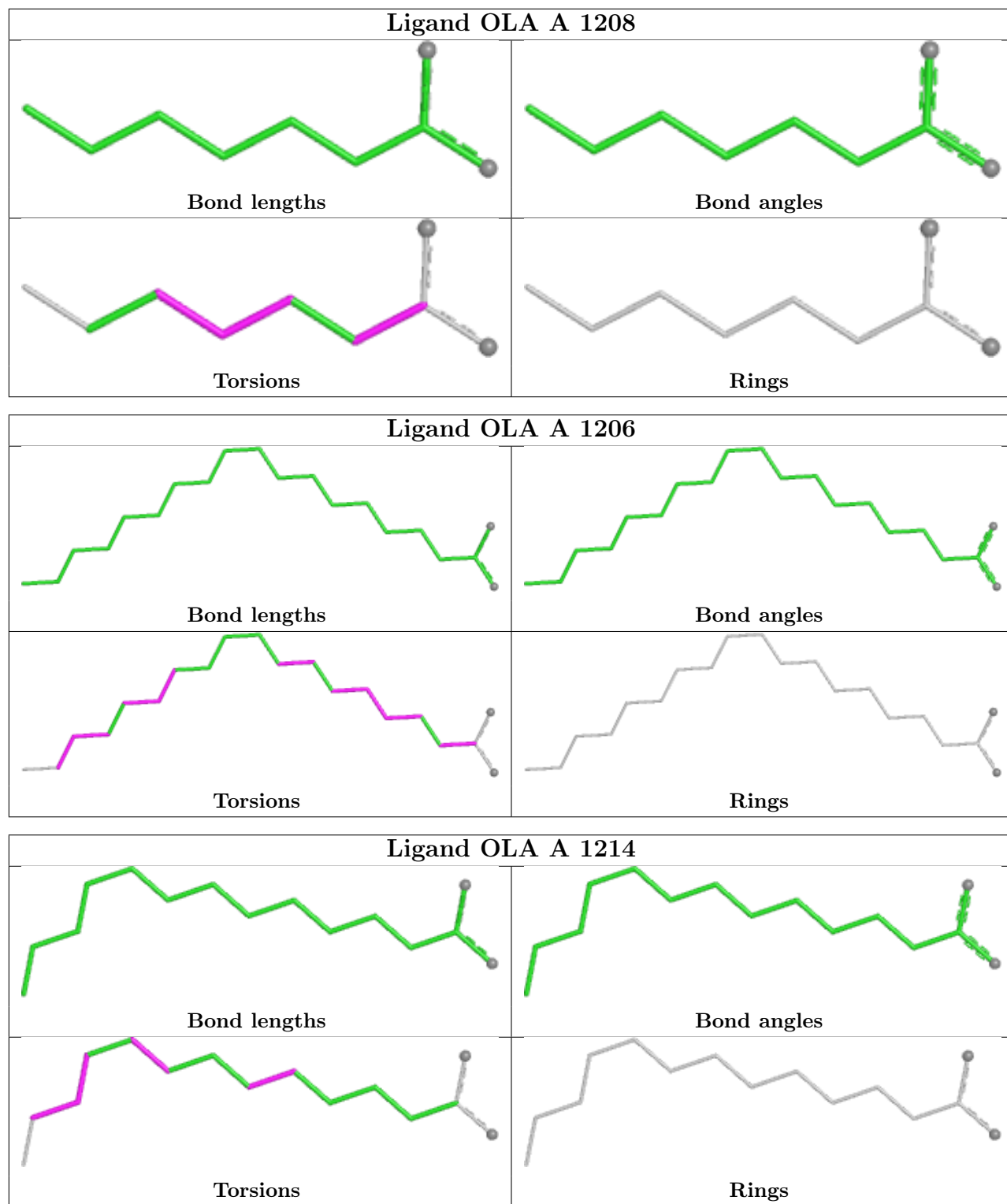
The following is a two-dimensional graphical depiction of Mogul quality analysis of bond lengths, bond angles, torsion angles, and ring geometry for all instances of the Ligand of Interest. In addition, ligands with molecular weight > 250 and outliers as shown on the validation Tables will also be included. For torsion angles, if less than 5% of the Mogul distribution of torsion angles is within 10 degrees of the torsion angle in question, then that torsion angle is considered an outlier. Any bond that is central to one or more torsion angles identified as an outlier by Mogul will be highlighted in the graph. For rings, the root-mean-square deviation (RMSD) between the ring in question and similar rings identified by Mogul is calculated over all ring torsion angles. If the average RMSD is greater than 60 degrees and the minimal RMSD between the ring in question and any Mogul-identified rings is also greater than 60 degrees, then that ring is considered an outlier. The outliers are highlighted in purple. The color gray indicates Mogul did not find sufficient equivalents in the CSD to analyse the geometry.

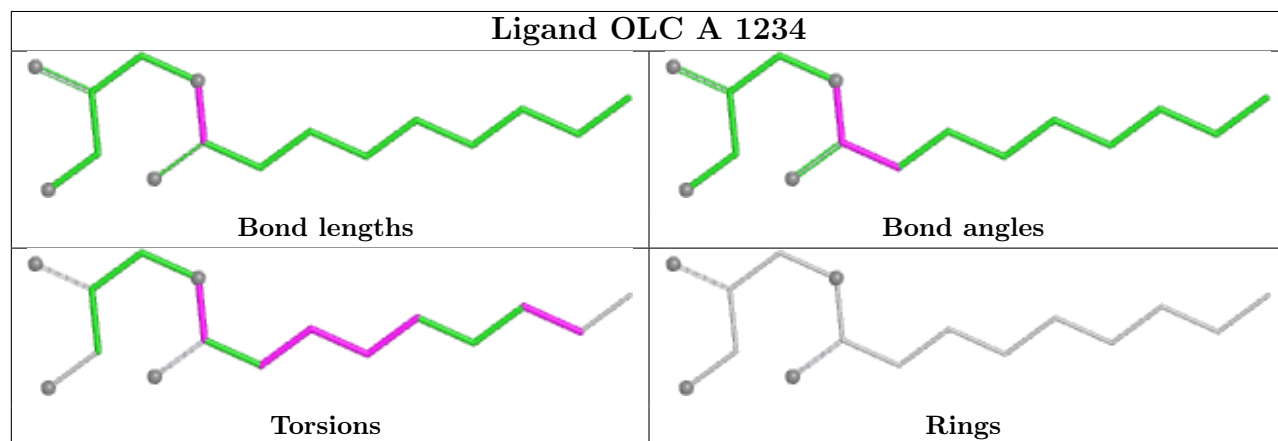
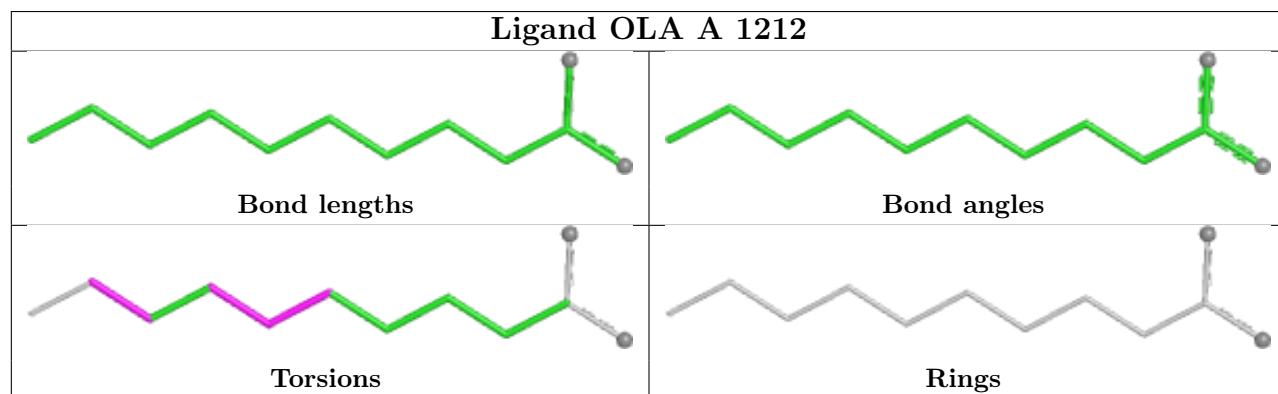
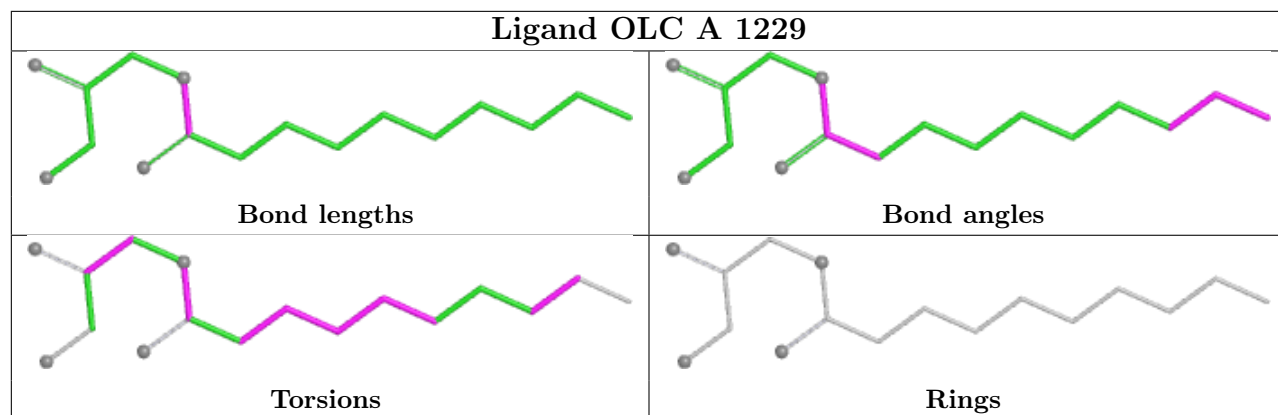


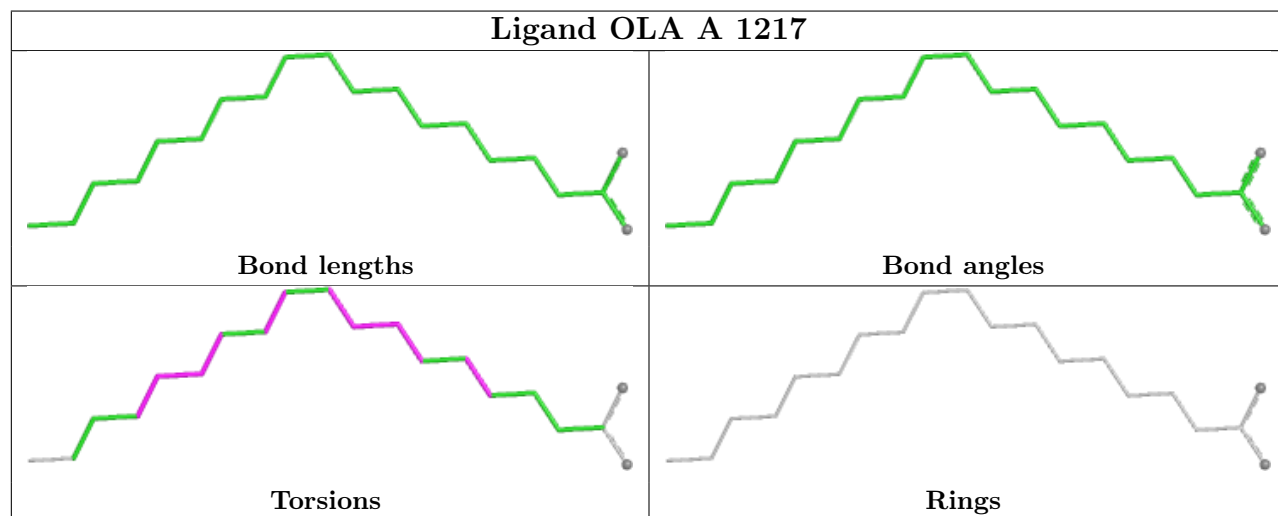
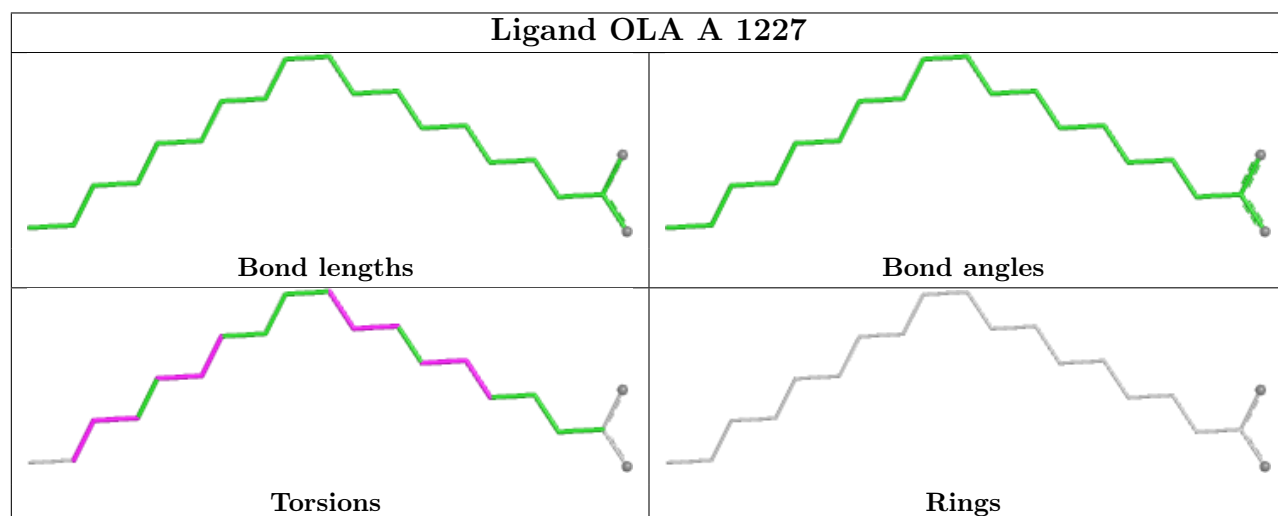
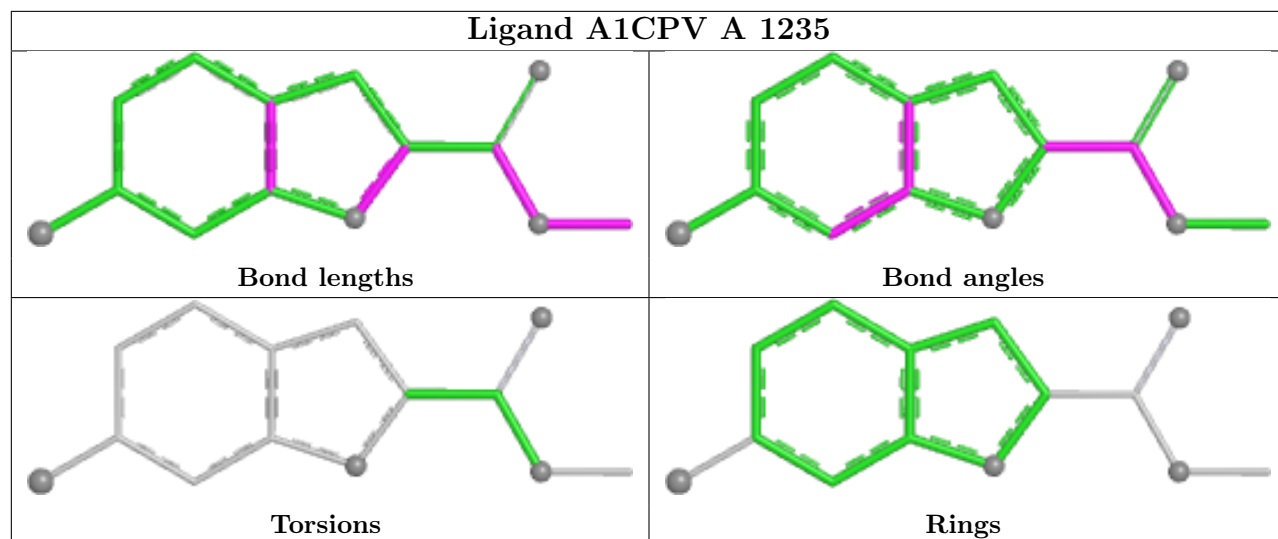


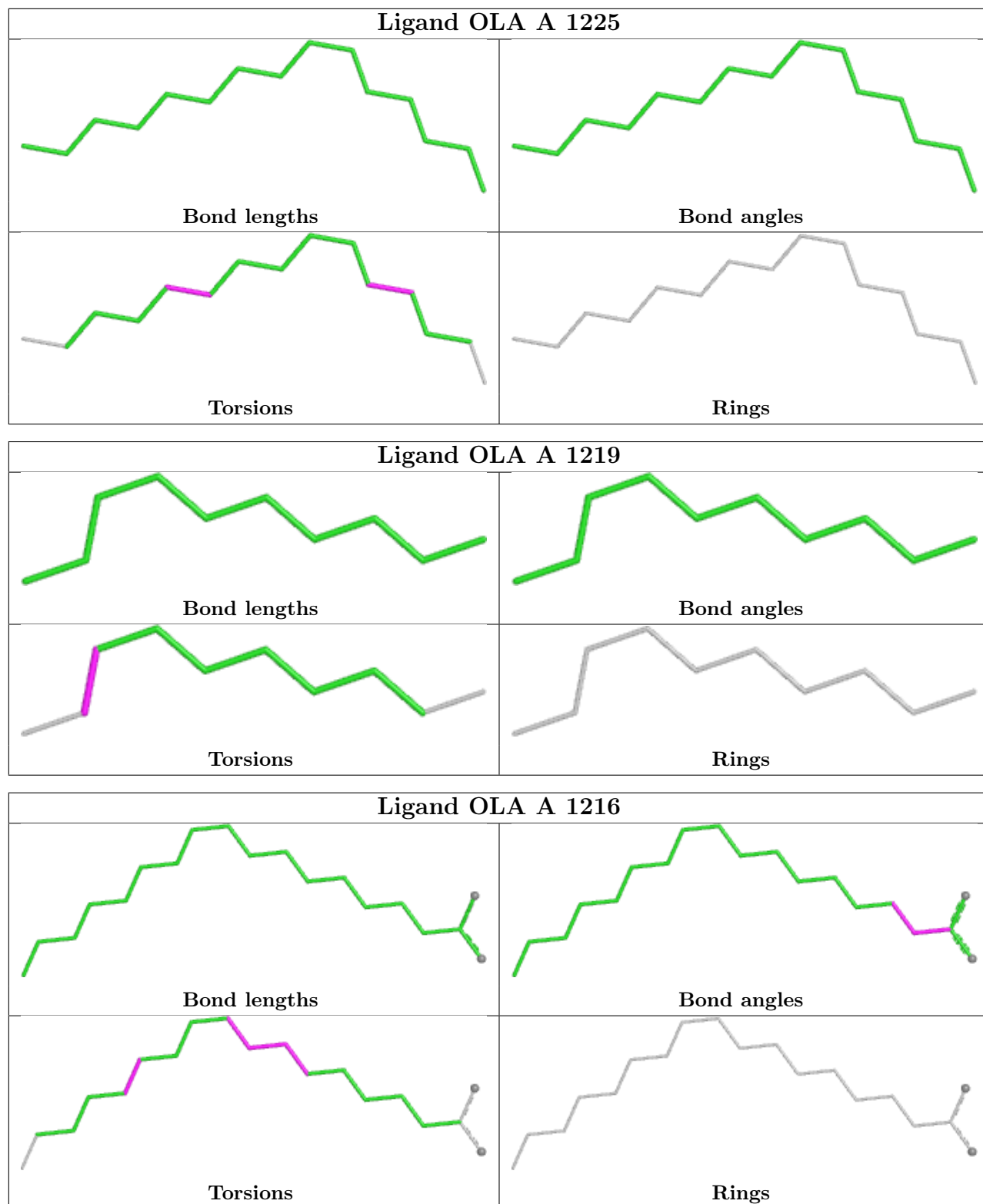


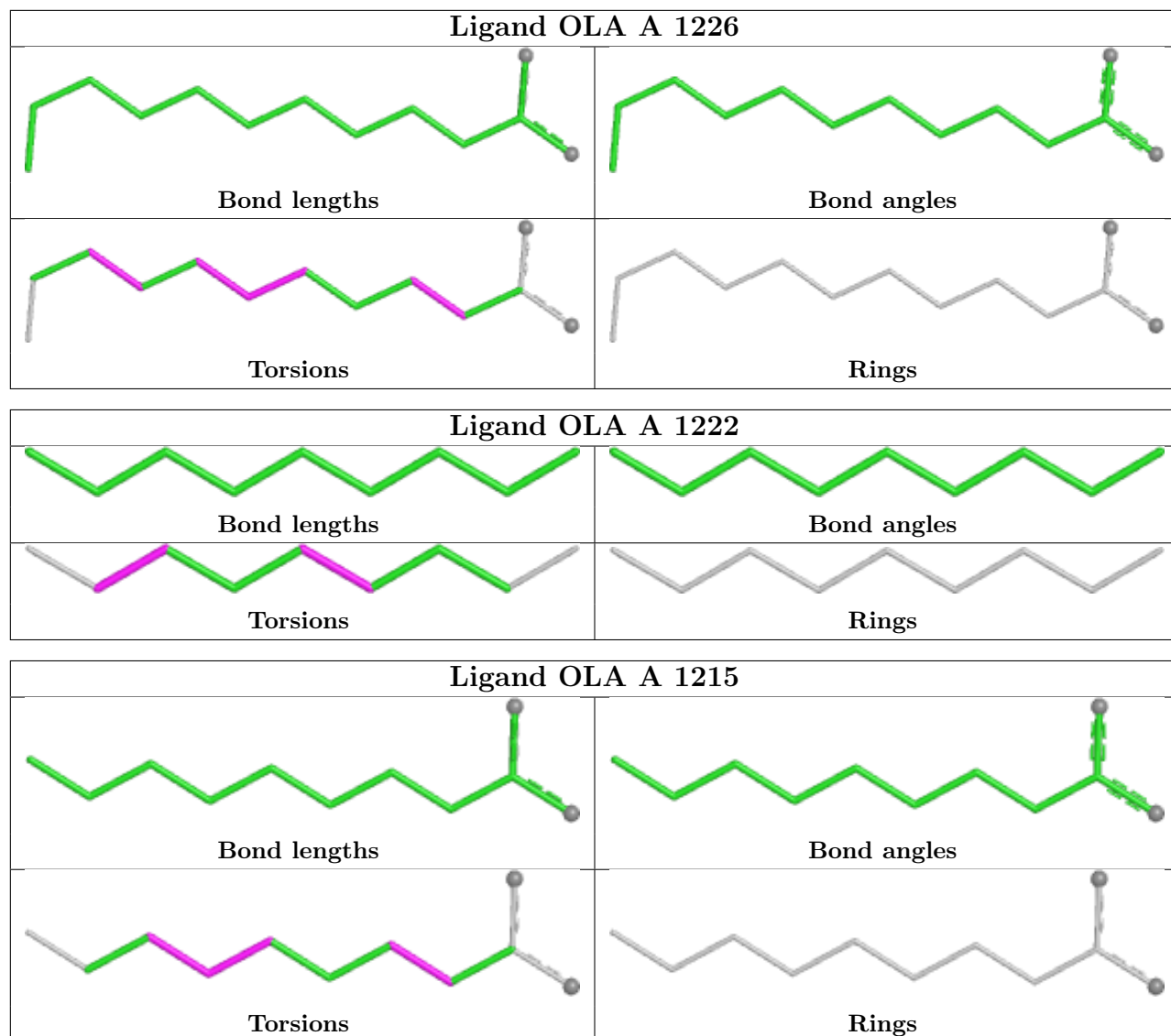


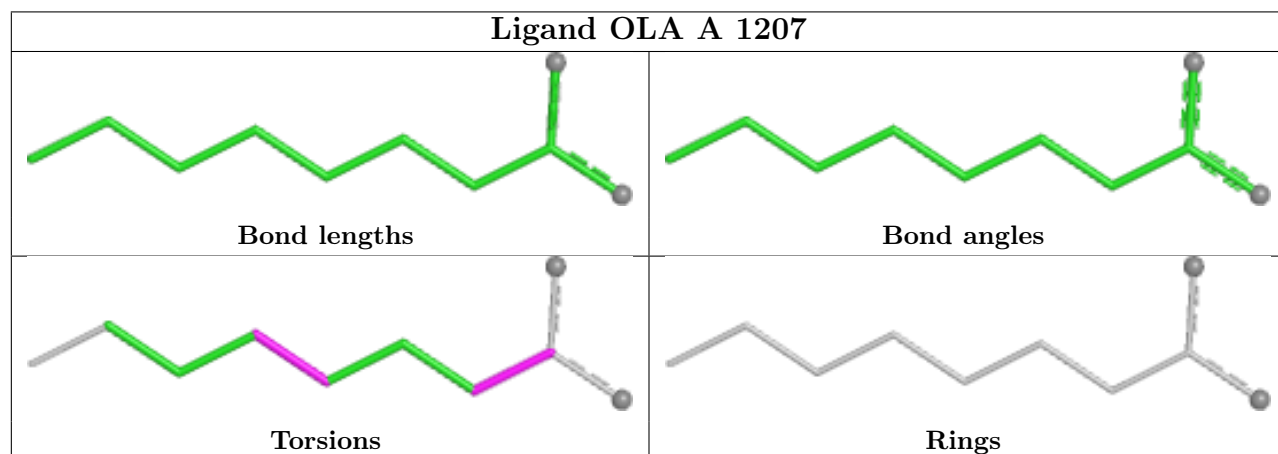
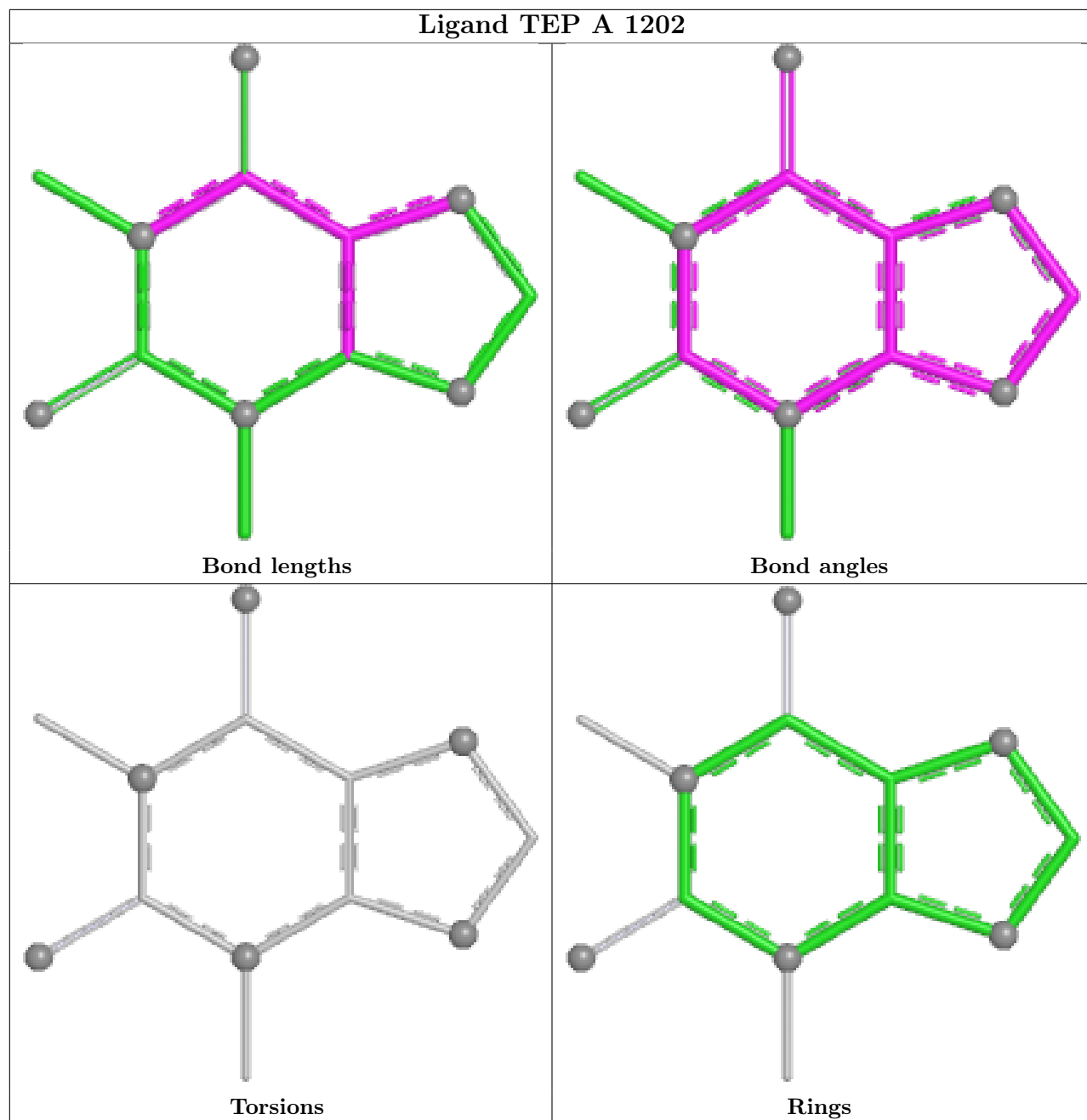


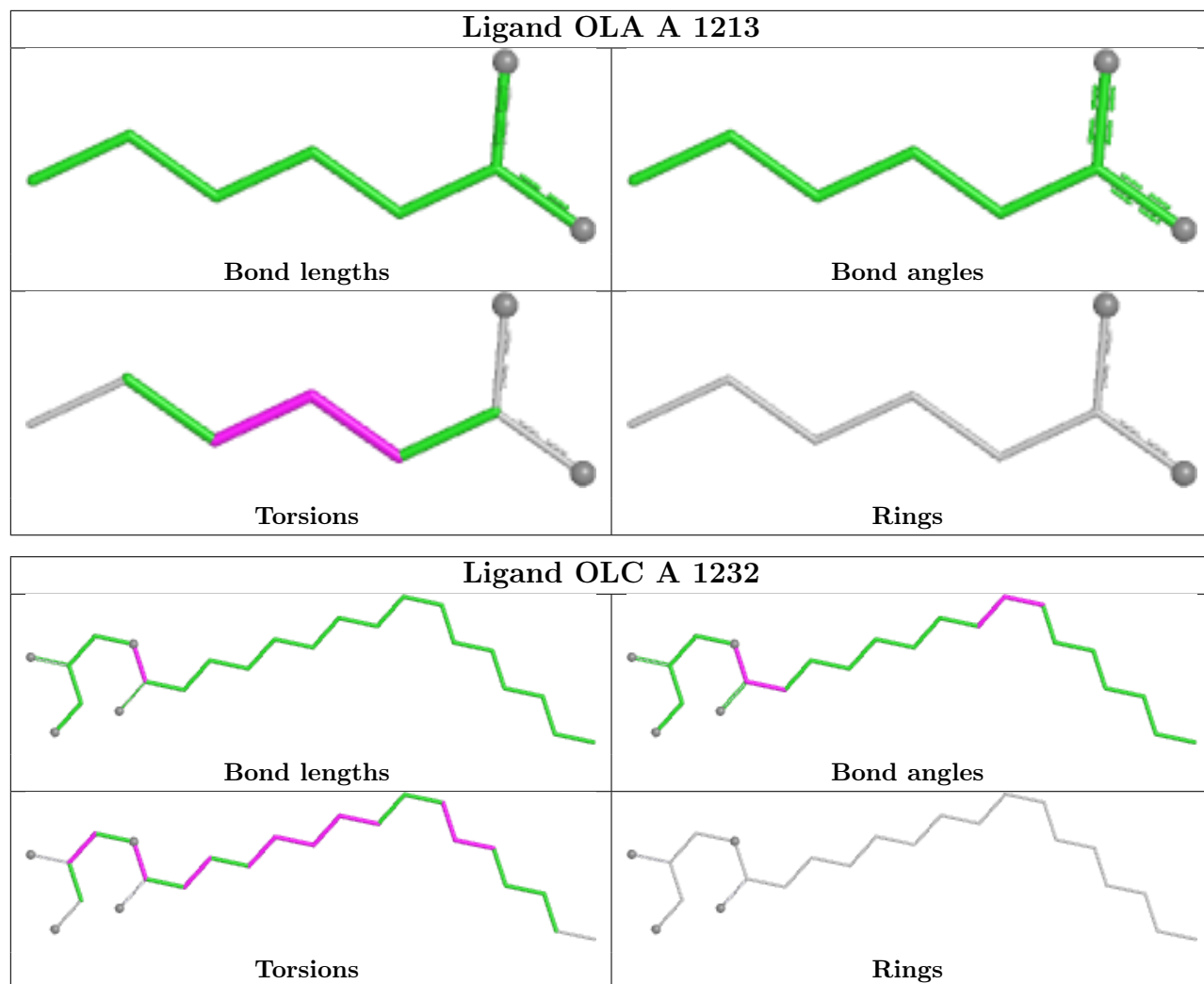












## 5.7 Other polymers [i](#)

There are no such residues in this entry.

## 5.8 Polymer linkage issues [i](#)

There are no chain breaks in this entry.

## 6 Fit of model and data [i](#)

### 6.1 Protein, DNA and RNA chains [i](#)

In the following table, the column labelled ‘#RSRZ> 2’ contains the number (and percentage) of RSRZ outliers, followed by percent RSRZ outliers for the chain as percentile scores relative to all X-ray entries and entries of similar resolution. The OWAB column contains the minimum, median, 95<sup>th</sup> percentile and maximum values of the occupancy-weighted average B-factor per residue. The column labelled ‘Q< 0.9’ lists the number of (and percentage) of residues with an average occupancy less than 0.9.

Mol	Chain	Analysed	<RSRZ>	#RSRZ>2	OWAB(Å <sup>2</sup> )	Q<0.9
1	A	390/433 (90%)	0.62	63 (16%) <b>4</b> <b>6</b>	8, 30, 74, 110	14 (3%)

The worst 5 of 63 RSRZ outliers are listed below:

Mol	Chain	Res	Type	RSRZ
1	A	308	LEU	5.2
1	A	307	VAL	5.2
1	A	29	TRP	4.7
1	A	1061	PHE	4.4
1	A	1106	LEU	4.1

### 6.2 Non-standard residues in protein, DNA, RNA chains [i](#)

There are no non-standard protein/DNA/RNA residues in this entry.

### 6.3 Carbohydrates [i](#)

There are no oligosaccharides in this entry.

### 6.4 Ligands [i](#)

In the following table, the Atoms column lists the number of modelled atoms in the group and the number defined in the chemical component dictionary. The B-factors column lists the minimum, median, 95<sup>th</sup> percentile and maximum values of B factors of atoms in the group. The column labelled ‘Q< 0.9’ lists the number of atoms with occupancy less than 0.9.

Mol	Type	Chain	Res	Atoms	RSCC	RSR	B-factors(Å <sup>2</sup> )	Q<0.9
8	DMS	A	1236[S]	4/4	0.53	0.23	61,67,69,97	0
8	DMS	A	1237[S]	4/4	0.54	0.32	66,72,97,111	0

*Continued on next page...*

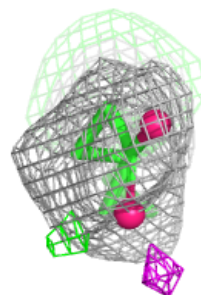
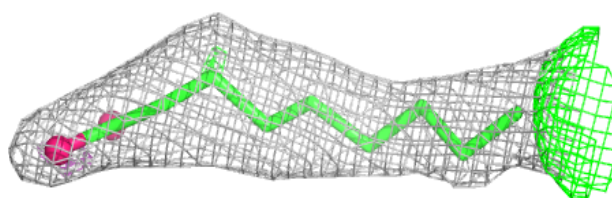
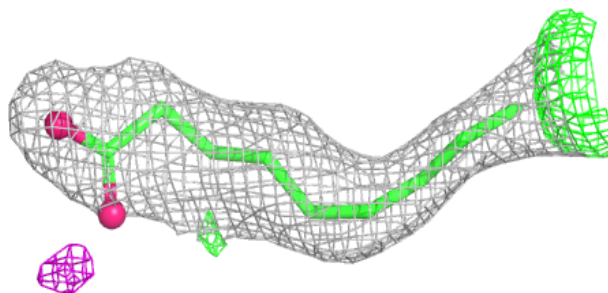
*Continued from previous page...*

Mol	Type	Chain	Res	Atoms	RSCC	RSR	B-factors( $\text{\AA}^2$ )	Q<0.9
5	OLA	A	1215	11/20	0.64	0.17	38,44,65,71	0
5	OLA	A	1227	20/20	0.65	0.23	47,67,81,84	0
5	OLA	A	1207	10/20	0.69	0.17	46,60,73,88	0
5	OLA	A	1217	20/20	0.71	0.21	35,57,65,66	0
5	OLA	A	1219	10/20	0.71	0.20	43,56,61,62	0
5	OLA	A	1222	9/20	0.71	0.20	36,50,67,83	0
5	OLA	A	1226	13/20	0.74	0.16	35,47,74,77	0
5	OLA	A	1213	8/20	0.75	0.14	46,47,55,62	0
6	OLC	A	1229	17/25	0.76	0.17	46,64,80,81	0
5	OLA	A	1221	12/20	0.77	0.16	38,43,50,53	0
5	OLA	A	1224	15/20	0.78	0.17	44,53,73,77	0
5	OLA	A	1214	15/20	0.78	0.17	53,57,70,72	0
5	OLA	A	1220	11/20	0.78	0.18	31,35,52,55	0
5	OLA	A	1216	19/20	0.79	0.17	43,47,60,65	0
5	OLA	A	1209	18/20	0.79	0.15	31,44,59,72	0
6	OLC	A	1232	23/25	0.80	0.17	32,42,72,80	0
5	OLA	A	1210	20/20	0.81	0.16	32,53,69,71	0
6	OLC	A	1233	18/25	0.81	0.16	37,48,58,79	0
6	OLC	A	1234	16/25	0.82	0.15	29,41,53,59	0
5	OLA	A	1211	20/20	0.82	0.15	48,58,78,83	0
5	OLA	A	1218	12/20	0.82	0.13	32,41,48,54	0
5	OLA	A	1223	8/20	0.83	0.15	47,51,53,54	0
5	OLA	A	1212	12/20	0.84	0.14	30,47,65,66	0
5	OLA	A	1208	9/20	0.84	0.13	31,35,57,61	0
5	OLA	A	1206	20/20	0.84	0.15	34,47,57,61	0
8	DMS	A	1238[S]	4/4	0.84	0.19	36,37,41,51	4
5	OLA	A	1225	15/20	0.86	0.12	36,39,47,49	0
6	OLC	A	1230	23/25	0.86	0.14	35,47,71,75	0
6	OLC	A	1231	23/25	0.87	0.14	28,43,57,70	0
6	OLC	A	1228	16/25	0.90	0.12	31,40,60,62	0
4	CLR	A	1204	28/28	0.93	0.09	25,34,42,44	0
3	TEP	A	1202	13/13	0.93	0.06	14,17,20,20	0
4	CLR	A	1203	28/28	0.93	0.09	23,29,45,50	0
2	NA	A	1201	1/1	0.95	0.13	28,28,28,28	0
4	CLR	A	1205	28/28	0.95	0.07	21,25,38,43	0
7	A1CPV	A	1235	14/14	0.97	0.10	25,29,33,34	14

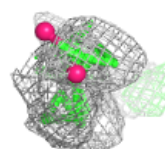
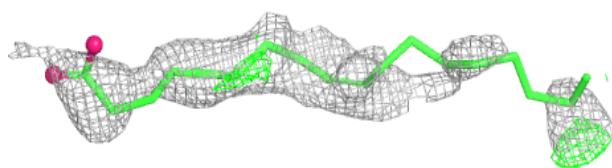
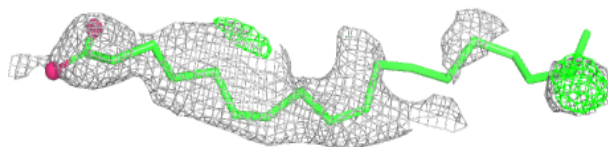
The following is a graphical depiction of the model fit to experimental electron density of all instances of the Ligand of Interest. In addition, ligands with molecular weight > 250 and outliers as shown on the geometry validation Tables will also be included. Each fit is shown from different orientation to approximate a three-dimensional view.

**Electron density around OLA A 1215:**

$2mF_o-DF_c$  (at 0.7 rmsd) in gray  
 $mF_o-DF_c$  (at 3 rmsd) in purple (negative)  
and green (positive)

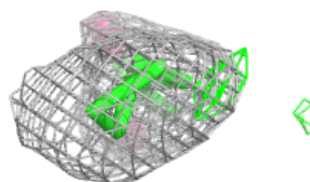
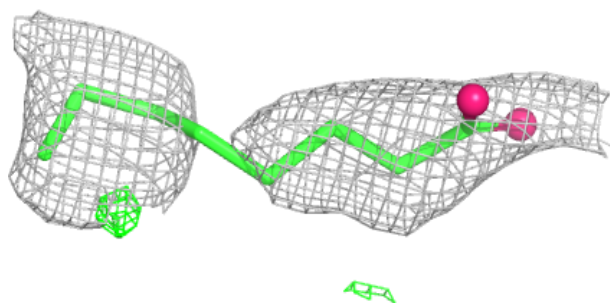
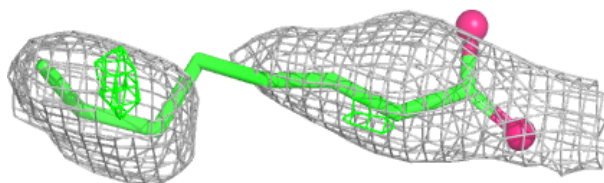
**Electron density around OLA A 1227:**

$2mF_o-DF_c$  (at 0.7 rmsd) in gray  
 $mF_o-DF_c$  (at 3 rmsd) in purple (negative)  
and green (positive)

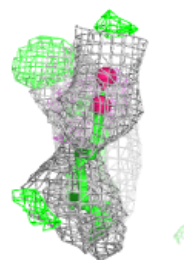
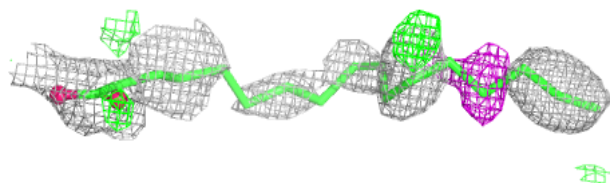
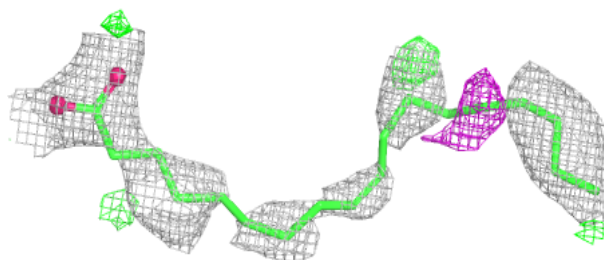


**Electron density around OLA A 1207:**

$2mF_o-DF_c$  (at 0.7 rmsd) in gray  
 $mF_o-DF_c$  (at 3 rmsd) in purple (negative)  
and green (positive)

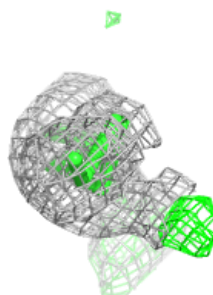
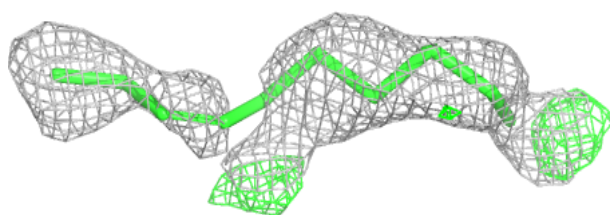
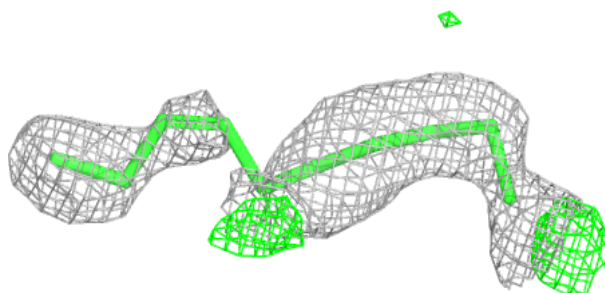
**Electron density around OLA A 1217:**

$2mF_o-DF_c$  (at 0.7 rmsd) in gray  
 $mF_o-DF_c$  (at 3 rmsd) in purple (negative)  
and green (positive)

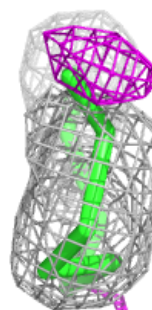
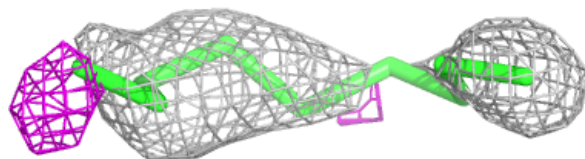
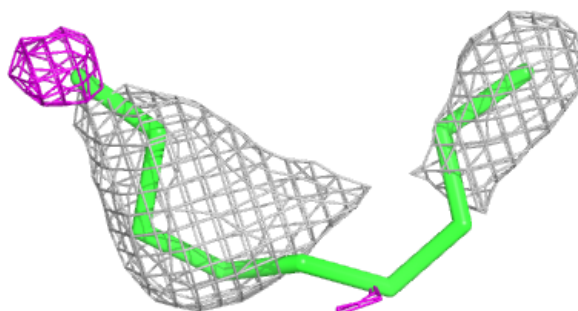


**Electron density around OLA A 1219:**

$2mF_o-DF_c$  (at 0.7 rmsd) in gray  
 $mF_o-DF_c$  (at 3 rmsd) in purple (negative)  
and green (positive)

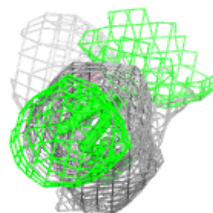
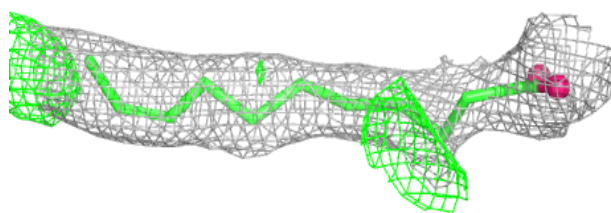
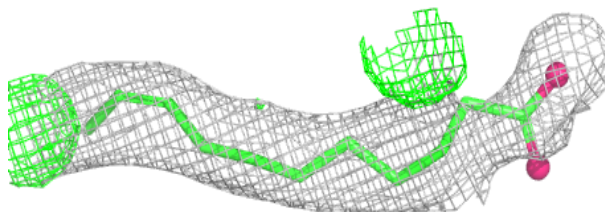
**Electron density around OLA A 1222:**

$2mF_o-DF_c$  (at 0.7 rmsd) in gray  
 $mF_o-DF_c$  (at 3 rmsd) in purple (negative)  
and green (positive)

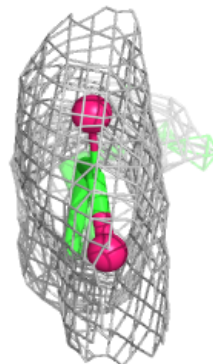
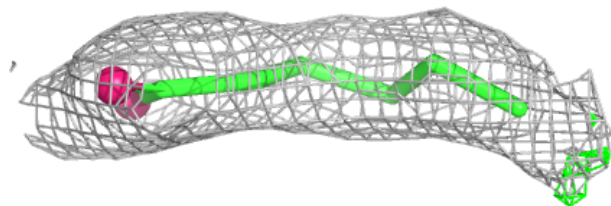
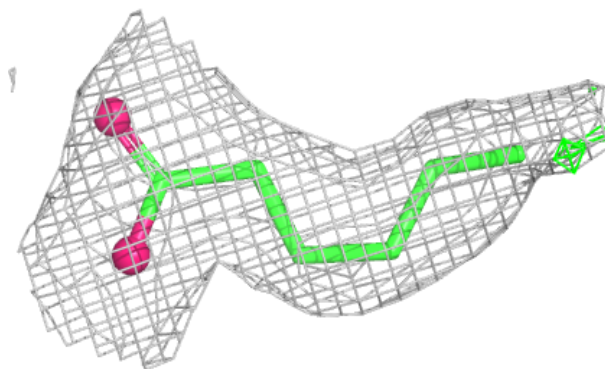


**Electron density around OLA A 1226:**

$2mF_o-DF_c$  (at 0.7 rmsd) in gray  
 $mF_o-DF_c$  (at 3 rmsd) in purple (negative)  
and green (positive)

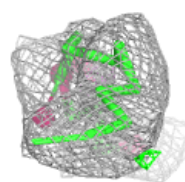
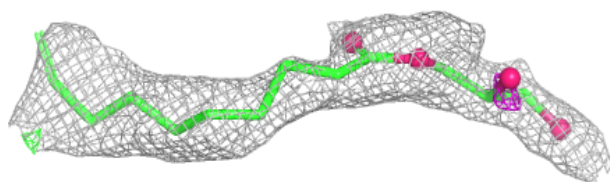
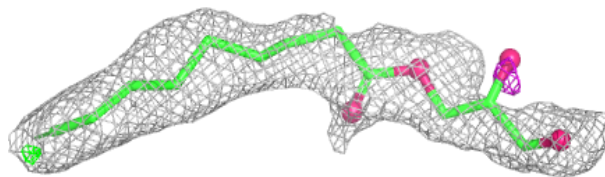
**Electron density around OLA A 1213:**

$2mF_o-DF_c$  (at 0.7 rmsd) in gray  
 $mF_o-DF_c$  (at 3 rmsd) in purple (negative)  
and green (positive)

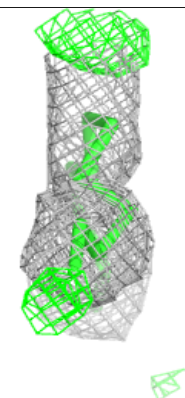
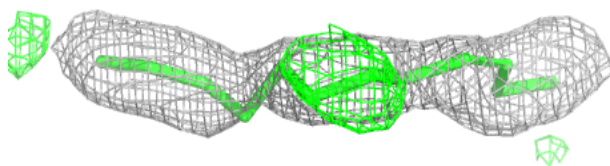
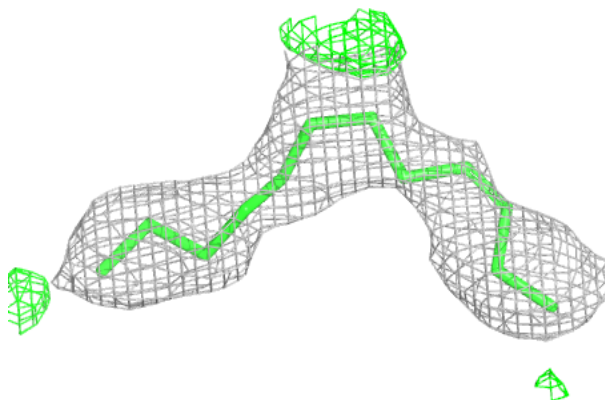


**Electron density around OLC A 1229:**

$2mF_o-DF_c$  (at 0.7 rmsd) in gray  
 $mF_o-DF_c$  (at 3 rmsd) in purple (negative)  
and green (positive)

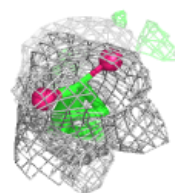
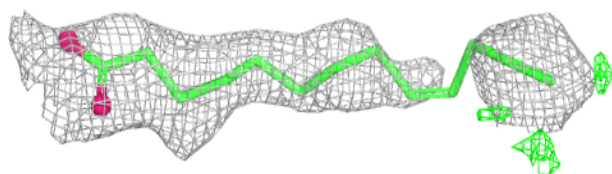
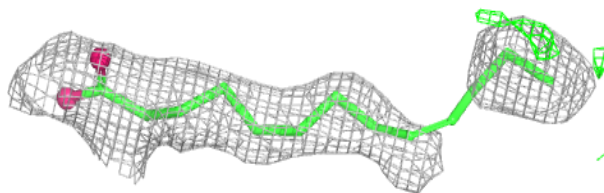
**Electron density around OLA A 1221:**

$2mF_o-DF_c$  (at 0.7 rmsd) in gray  
 $mF_o-DF_c$  (at 3 rmsd) in purple (negative)  
and green (positive)

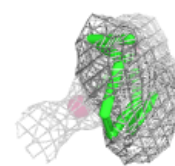
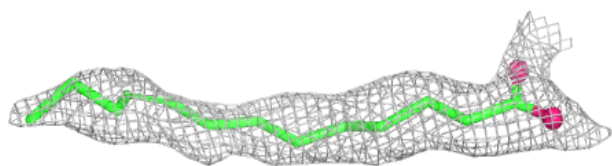
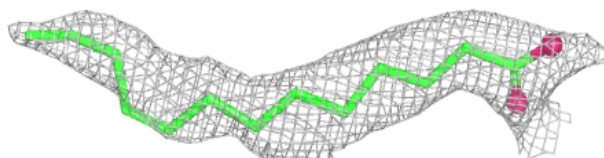


**Electron density around OLA A 1224:**

$2mF_o-DF_c$  (at 0.7 rmsd) in gray  
 $mF_o-DF_c$  (at 3 rmsd) in purple (negative)  
and green (positive)

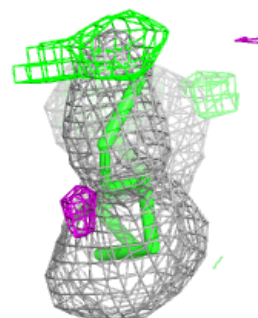
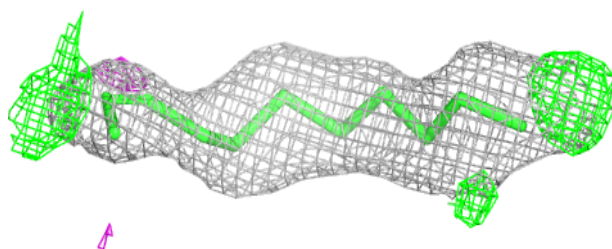
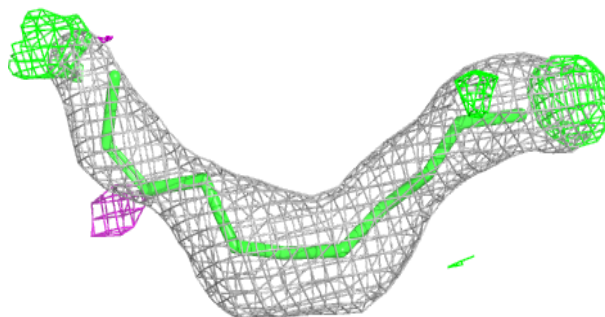
**Electron density around OLA A 1214:**

$2mF_o-DF_c$  (at 0.7 rmsd) in gray  
 $mF_o-DF_c$  (at 3 rmsd) in purple (negative)  
and green (positive)

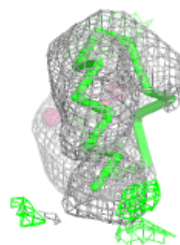
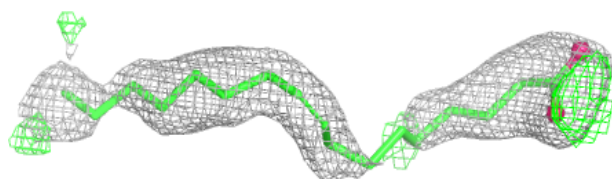
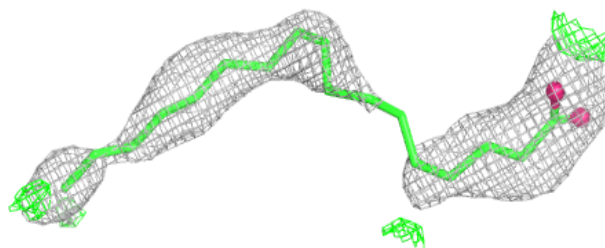


**Electron density around OLA A 1220:**

$2mF_o-DF_c$  (at 0.7 rmsd) in gray  
 $mF_o-DF_c$  (at 3 rmsd) in purple (negative)  
and green (positive)

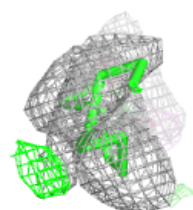
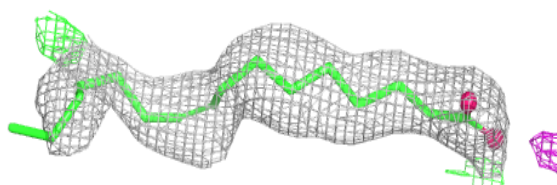
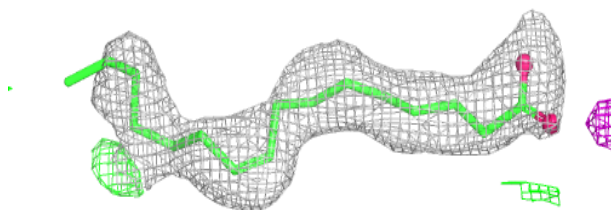
**Electron density around OLA A 1216:**

$2mF_o-DF_c$  (at 0.7 rmsd) in gray  
 $mF_o-DF_c$  (at 3 rmsd) in purple (negative)  
and green (positive)

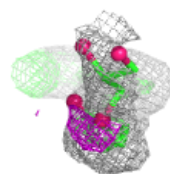
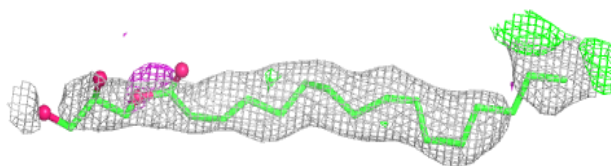
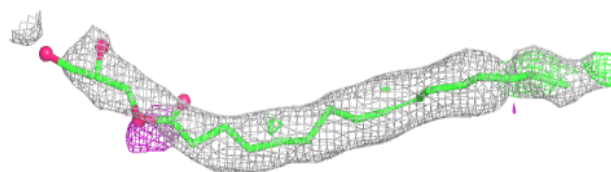


**Electron density around OLA A 1209:**

$2mF_o-DF_c$  (at 0.7 rmsd) in gray  
 $mF_o-DF_c$  (at 3 rmsd) in purple (negative)  
and green (positive)

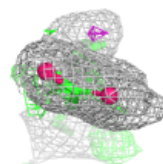
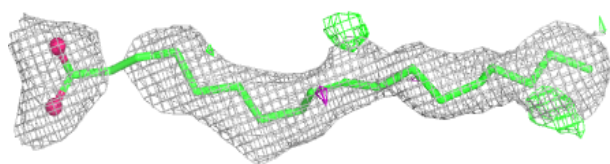
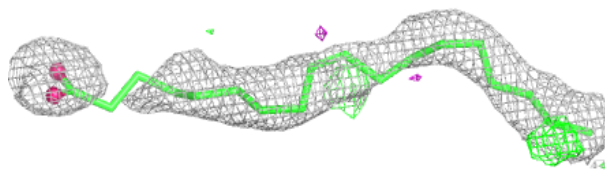
**Electron density around OLC A 1232:**

$2mF_o-DF_c$  (at 0.7 rmsd) in gray  
 $mF_o-DF_c$  (at 3 rmsd) in purple (negative)  
and green (positive)

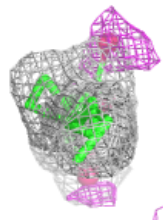
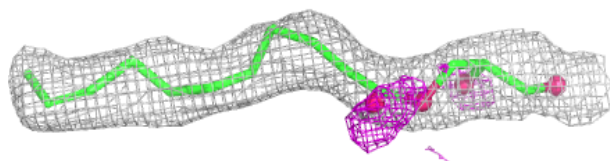
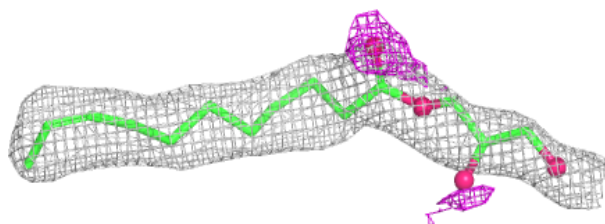


**Electron density around OLA A 1210:**

$2mF_o-DF_c$  (at 0.7 rmsd) in gray  
 $mF_o-DF_c$  (at 3 rmsd) in purple (negative)  
and green (positive)

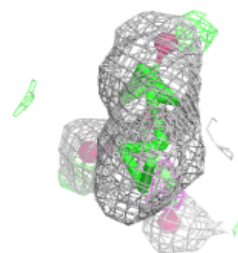
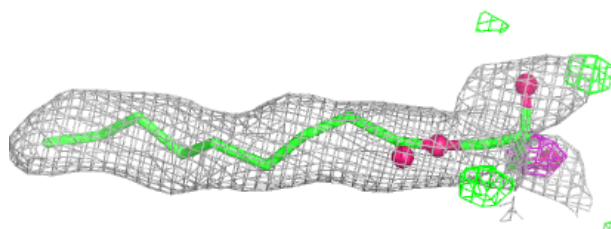
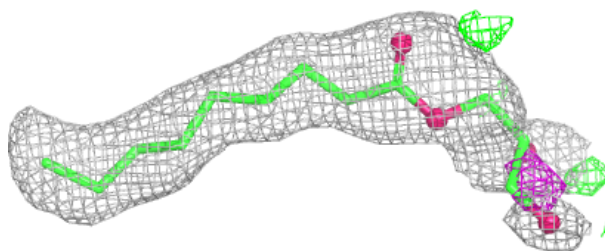
**Electron density around OLC A 1233:**

$2mF_o-DF_c$  (at 0.7 rmsd) in gray  
 $mF_o-DF_c$  (at 3 rmsd) in purple (negative)  
and green (positive)

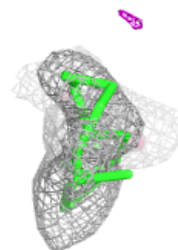
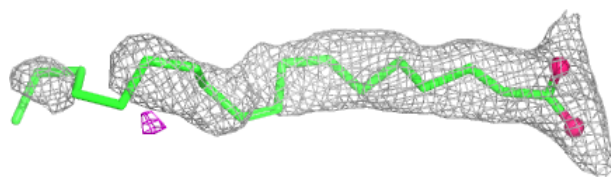
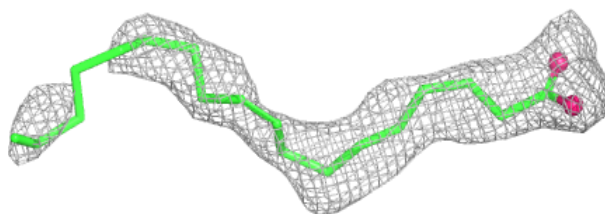


**Electron density around OLC A 1234:**

$2mF_o-DF_c$  (at 0.7 rmsd) in gray  
 $mF_o-DF_c$  (at 3 rmsd) in purple (negative)  
and green (positive)

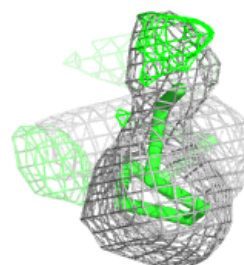
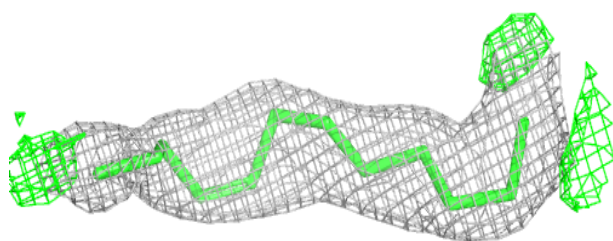
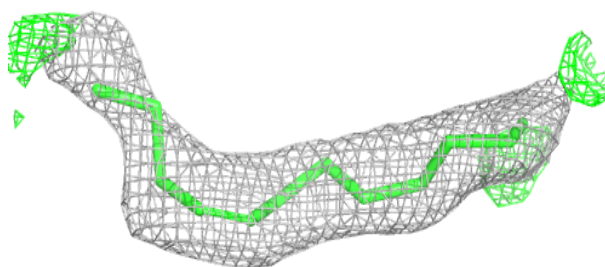
**Electron density around OLA A 1211:**

$2mF_o-DF_c$  (at 0.7 rmsd) in gray  
 $mF_o-DF_c$  (at 3 rmsd) in purple (negative)  
and green (positive)

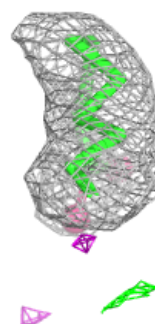
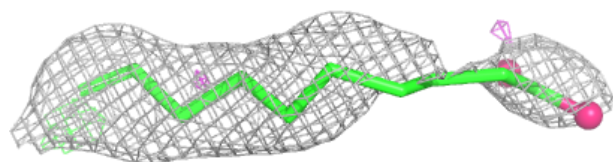
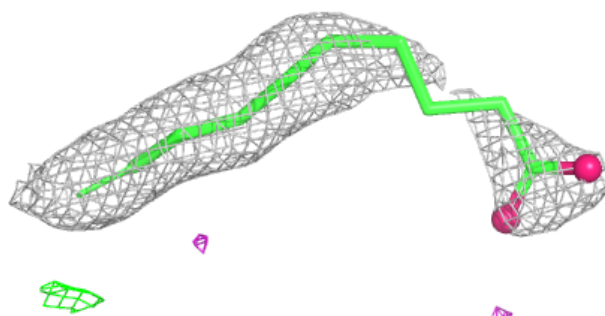


**Electron density around OLA A 1218:**

$2mF_o-DF_c$  (at 0.7 rmsd) in gray  
 $mF_o-DF_c$  (at 3 rmsd) in purple (negative)  
and green (positive)

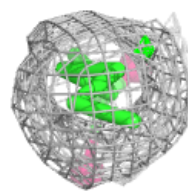
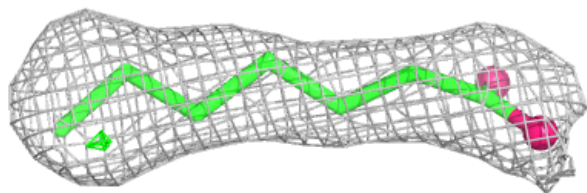
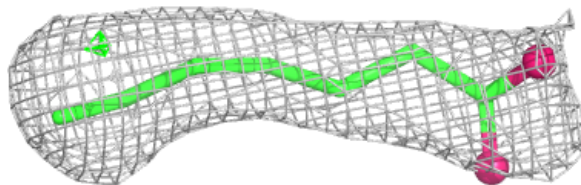
**Electron density around OLA A 1212:**

$2mF_o-DF_c$  (at 0.7 rmsd) in gray  
 $mF_o-DF_c$  (at 3 rmsd) in purple (negative)  
and green (positive)

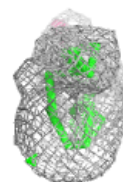
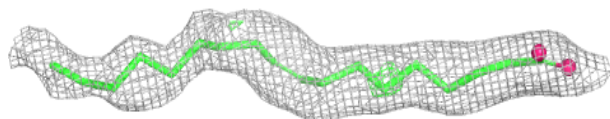
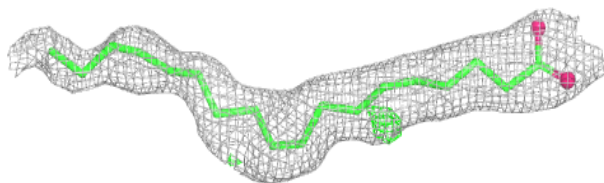


**Electron density around OLA A 1208:**

$2mF_o-DF_c$  (at 0.7 rmsd) in gray  
 $mF_o-DF_c$  (at 3 rmsd) in purple (negative)  
and green (positive)

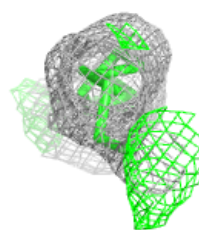
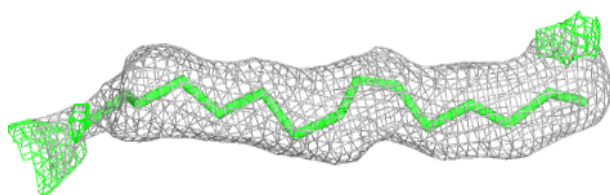
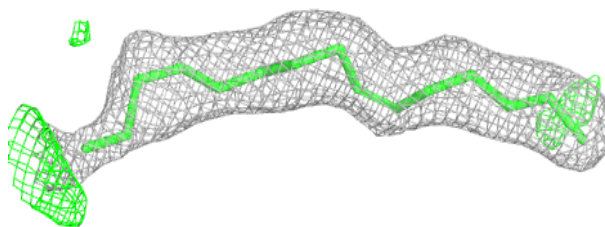
**Electron density around OLA A 1206:**

$2mF_o-DF_c$  (at 0.7 rmsd) in gray  
 $mF_o-DF_c$  (at 3 rmsd) in purple (negative)  
and green (positive)

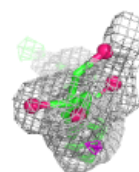
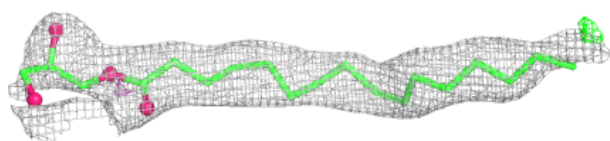
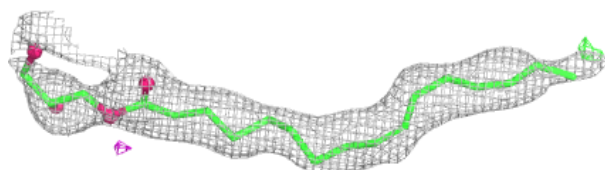


**Electron density around OLA A 1225:**

$2mF_o-DF_c$  (at 0.7 rmsd) in gray  
 $mF_o-DF_c$  (at 3 rmsd) in purple (negative)  
and green (positive)

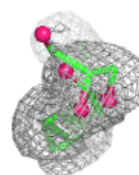
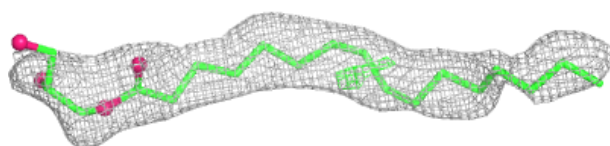
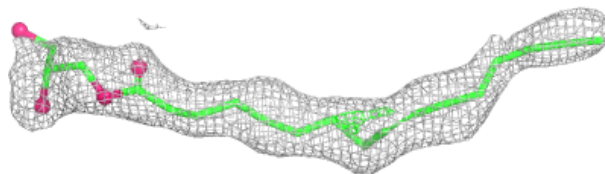
**Electron density around OLC A 1230:**

$2mF_o-DF_c$  (at 0.7 rmsd) in gray  
 $mF_o-DF_c$  (at 3 rmsd) in purple (negative)  
and green (positive)

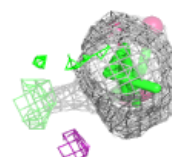
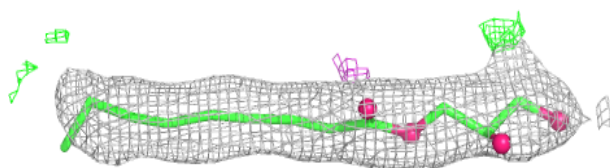
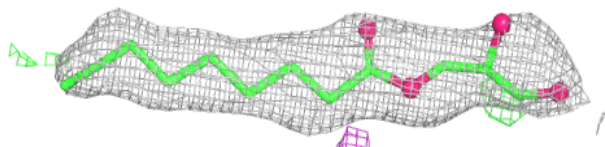


**Electron density around OLC A 1231:**

$2mF_o-DF_c$  (at 0.7 rmsd) in gray  
 $mF_o-DF_c$  (at 3 rmsd) in purple (negative)  
and green (positive)

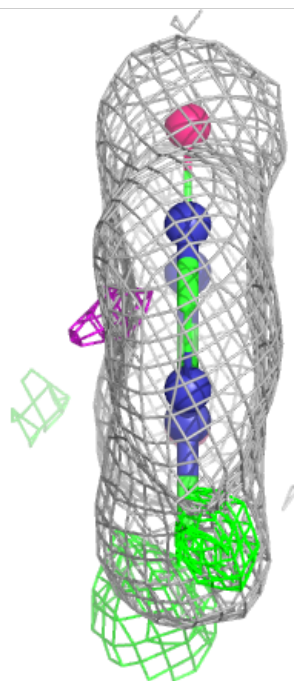
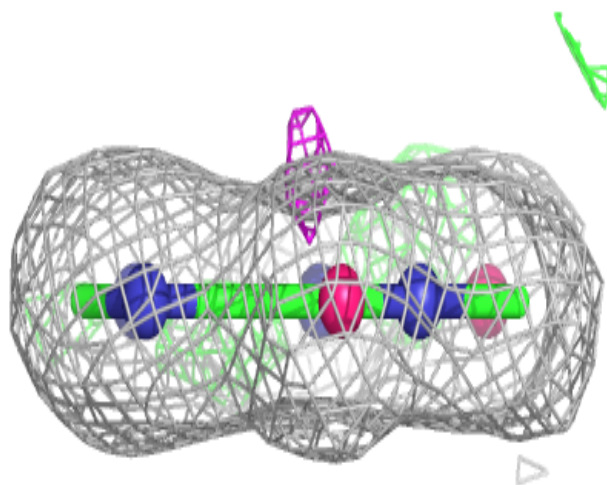
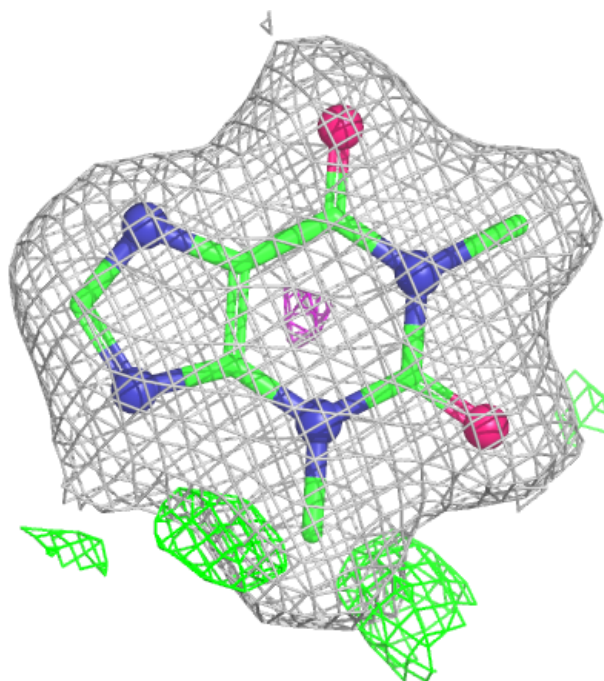
**Electron density around OLC A 1228:**

$2mF_o-DF_c$  (at 0.7 rmsd) in gray  
 $mF_o-DF_c$  (at 3 rmsd) in purple (negative)  
and green (positive)



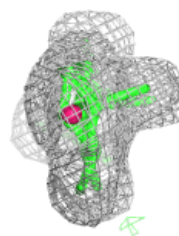
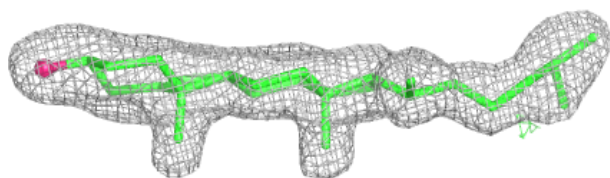
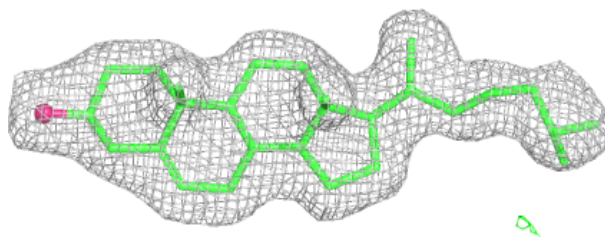
**Electron density around TEP A 1202:**

$2mF_o - DF_c$  (at 0.7 rmsd) in gray  
 $mF_o - DF_c$  (at 3 rmsd) in purple (negative)  
and green (positive)

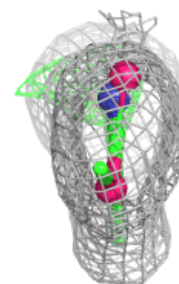
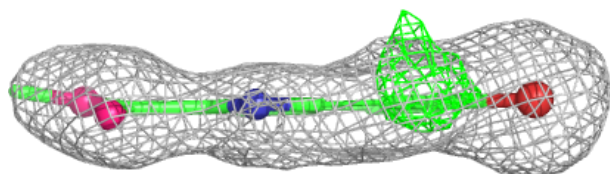
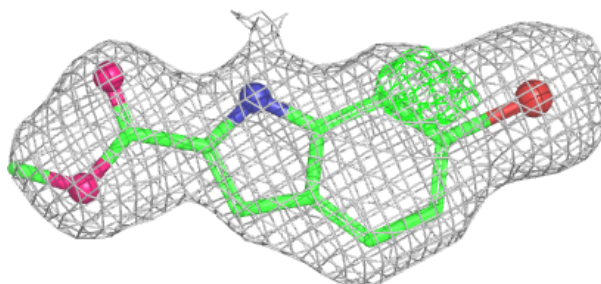


**Electron density around CLR A 1205:**

$2mF_o-DF_c$  (at 0.7 rmsd) in gray  
 $mF_o-DF_c$  (at 3 rmsd) in purple (negative)  
and green (positive)

**Electron density around A1CPV A 1235:**

$2mF_o-DF_c$  (at 0.7 rmsd) in gray  
 $mF_o-DF_c$  (at 3 rmsd) in purple (negative)  
and green (positive)



## 6.5 Other polymers [i](#)

There are no such residues in this entry.