



# wwPDB X-ray Structure Validation Summary Report ⓘ

Oct 2, 2021 – 01:56 PM EDT

PDB ID : 3IKA  
Title : Crystal Structure of EGFR 696-1022 T790M Mutant Covalently Binding to WZ4002  
Authors : Yun, C.-H.; Eck, M.J.  
Deposited on : 2009-08-05  
Resolution : 2.90 Å (reported)

This is a wwPDB X-ray Structure Validation Summary Report for a publicly released PDB entry.

We welcome your comments at [validation@mail.wwpdb.org](mailto:validation@mail.wwpdb.org)

A user guide is available at

<https://www.wwpdb.org/validation/2017/XrayValidationReportHelp>

with specific help available everywhere you see the ⓘ symbol.

---

The following versions of software and data (see [references ⓘ](#)) were used in the production of this report:

MolProbity : 4.02b-467  
Mogul : 1.8.5 (274361), CSD as541be (2020)  
Xtrriage (Phenix) : 1.13  
EDS : 2.23.2  
buster-report : 1.1.7 (2018)  
Percentile statistics : 20191225.v01 (using entries in the PDB archive December 25th 2019)  
Refmac : 5.8.0158  
CCP4 : 7.0.044 (Gargrove)  
Ideal geometry (proteins) : Engh & Huber (2001)  
Ideal geometry (DNA, RNA) : Parkinson et al. (1996)  
Validation Pipeline (wwPDB-VP) : 2.23.2

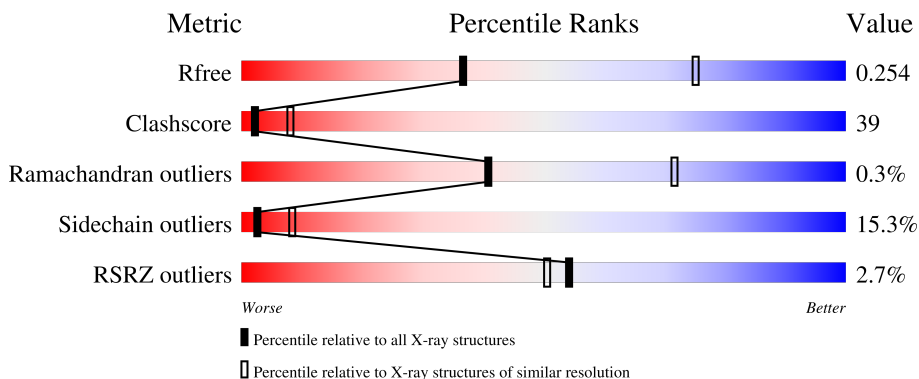
# 1 Overall quality at a glance

The following experimental techniques were used to determine the structure:

*X-RAY DIFFRACTION*

The reported resolution of this entry is 2.90 Å.

Percentile scores (ranging between 0-100) for global validation metrics of the entry are shown in the following graphic. The table shows the number of entries on which the scores are based.



Metric	Whole archive (#Entries)	Similar resolution (#Entries, resolution range(Å))
$R_{free}$	130704	1957 (2.90-2.90)
Clashscore	141614	2172 (2.90-2.90)
Ramachandran outliers	138981	2115 (2.90-2.90)
Sidechain outliers	138945	2117 (2.90-2.90)
RSRZ outliers	127900	1906 (2.90-2.90)

The table below summarises the geometric issues observed across the polymeric chains and their fit to the electron density. The red, orange, yellow and green segments of the lower bar indicate the fraction of residues that contain outliers for  $\geq 3$ , 2, 1 and 0 types of geometric quality criteria respectively. A grey segment represents the fraction of residues that are not modelled. The numeric value for each fraction is indicated below the corresponding segment, with a dot representing fractions  $\leq 5\%$ . The upper red bar (where present) indicates the fraction of residues that have poor fit to the electron density. The numeric value is given above the bar.

Mol	Chain	Length	Quality of chain
1	A	331	
1	B	331	

## 2 Entry composition i

There are 3 unique types of molecules in this entry. The entry contains 5104 atoms, of which 0 are hydrogens and 0 are deuteriums.

In the tables below, the ZeroOcc column contains the number of atoms modelled with zero occupancy, the AltConf column contains the number of residues with at least one atom in alternate conformation and the Trace column contains the number of residues modelled with at most 2 atoms.

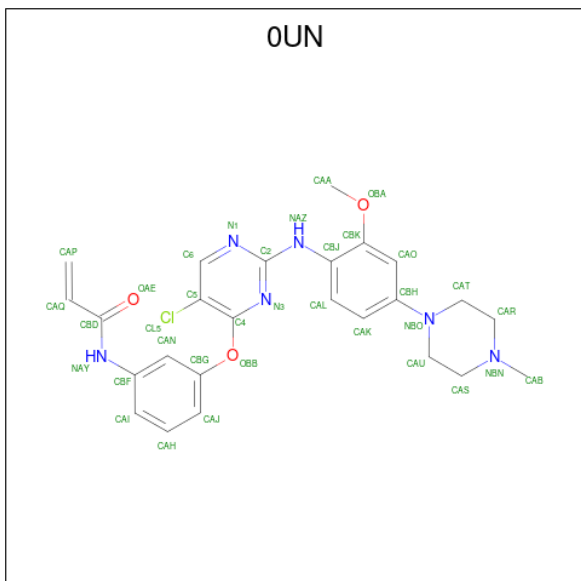
- Molecule 1 is a protein called Epidermal growth factor receptor.

Mol	Chain	Residues	Atoms					ZeroOcc	AltConf	Trace
			Total	C	N	O	S			
1	A	310	2440	1567	411	444	18	0	0	0
1	B	310	2481	1591	418	454	18	0	1	0

There are 6 discrepancies between the modelled and reference sequences:

Chain	Residue	Modelled	Actual	Comment	Reference
A	692	GLY	-	expression tag	UNP P00533
A	693	SER	-	expression tag	UNP P00533
A	790	MET	THR	engineered mutation	UNP P00533
B	692	GLY	-	expression tag	UNP P00533
B	693	SER	-	expression tag	UNP P00533
B	790	MET	THR	engineered mutation	UNP P00533

- Molecule 2 is N-{3-[(5-chloro-2-{[2-methoxy-4-(4-methylpiperazin-1-yl)phenyl]amino}pyrimidin-4-yl)oxy]phenyl}prop-2-enamide (three-letter code: OUN) (formula: C<sub>25</sub>H<sub>27</sub>ClN<sub>6</sub>O<sub>3</sub>).



Mol	Chain	Residues	Atoms					ZeroOcc	AltConf
			Total	C	Cl	N	O		
2	A	1	35	25	1	6	3	0	0

- Molecule 3 is water.

Mol	Chain	Residues	Atoms		ZeroOcc	AltConf
3	A	71	Total	O	0	0
			71	71		
3	B	77	Total	O	0	0
			77	77		



LEU	PRO	SER	PRO	T993	D994	S995	R996	F997	Y998	R999	A1000	L1001	M1002	D1003	E1004	E1005	ASP	MET	ASP	ASP	V1010	V1011	D1012	A1013	D1014	E1015	Y1016	L1017	ILE	PRO	GLN	GLN	GLY
-----	-----	-----	-----	------	------	------	------	------	------	------	-------	-------	-------	-------	-------	-------	-----	-----	-----	-----	-------	-------	-------	-------	-------	-------	-------	-------	-----	-----	-----	-----	-----

## 4 Data and refinement statistics

Property	Value	Source
Space group	P 21 21 21	Depositor
Cell constants a, b, c, $\alpha$ , $\beta$ , $\gamma$	48.23Å 89.13Å 165.22Å 90.00° 90.00° 90.00°	Depositor
Resolution (Å)	20.83 – 2.90 20.65 – 2.90	Depositor EDS
% Data completeness (in resolution range)	97.0 (20.83-2.90) 97.0 (20.65-2.90)	Depositor EDS
$R_{merge}$	0.13	Depositor
$R_{sym}$	(Not available)	Depositor
$\langle I/\sigma(I) \rangle$ <sup>1</sup>	2.60 (at 2.88Å)	Xtrriage
Refinement program	REFMAC 5.5.0093	Depositor
R, $R_{free}$	0.208 , 0.257 0.204 , 0.254	Depositor DCC
$R_{free}$ test set	806 reflections (5.06%)	wwPDB-VP
Wilson B-factor (Å <sup>2</sup> )	64.2	Xtrriage
Anisotropy	0.021	Xtrriage
Bulk solvent $k_{sol}$ (e/Å <sup>3</sup> ), $B_{sol}$ (Å <sup>2</sup> )	0.31 , 51.3	EDS
L-test for twinning <sup>2</sup>	$\langle  L  \rangle = 0.47$ , $\langle L^2 \rangle = 0.30$	Xtrriage
Estimated twinning fraction	No twinning to report.	Xtrriage
$F_o, F_c$ correlation	0.94	EDS
Total number of atoms	5104	wwPDB-VP
Average B, all atoms (Å <sup>2</sup> )	62.0	wwPDB-VP

Xtrriage's analysis on translational NCS is as follows: *The largest off-origin peak in the Patterson function is 4.90% of the height of the origin peak. No significant pseudotranslation is detected.*

<sup>1</sup>Intensities estimated from amplitudes.

<sup>2</sup>Theoretical values of  $\langle |L| \rangle$ ,  $\langle L^2 \rangle$  for acentric reflections are 0.5, 0.333 respectively for untwinned datasets, and 0.375, 0.2 for perfectly twinned datasets.

## 5 Model quality [i](#)

### 5.1 Standard geometry [i](#)

Bond lengths and bond angles in the following residue types are not validated in this section: 0UN

The Z score for a bond length (or angle) is the number of standard deviations the observed value is removed from the expected value. A bond length (or angle) with  $|Z| > 5$  is considered an outlier worth inspection. RMSZ is the root-mean-square of all Z scores of the bond lengths (or angles).

Mol	Chain	Bond lengths		Bond angles	
		RMSZ	# Z  >5	RMSZ	# Z  >5
1	A	1.22	1/2491 (0.0%)	0.85	0/3370
1	B	1.17	1/2534 (0.0%)	0.81	0/3422
All	All	1.20	2/5025 (0.0%)	0.83	0/6792

All (2) bond length outliers are listed below:

Mol	Chain	Res	Type	Atoms	Z	Observed(Å)	Ideal(Å)
1	A	944	TYR	CE2-CZ	-5.23	1.31	1.38
1	B	817	TRP	CB-CG	-5.18	1.41	1.50

There are no bond angle outliers.

There are no chirality outliers.

There are no planarity outliers.

### 5.2 Too-close contacts [i](#)

In the following table, the Non-H and H(model) columns list the number of non-hydrogen atoms and hydrogen atoms in the chain respectively. The H(added) column lists the number of hydrogen atoms added and optimized by MolProbity. The Clashes column lists the number of clashes within the asymmetric unit, whereas Symm-Clashes lists symmetry-related clashes.

Mol	Chain	Non-H	H(model)	H(added)	Clashes	Symm-Clashes
1	A	2440	0	2444	183	0
1	B	2481	0	2499	205	0
2	A	35	0	26	9	0
3	A	71	0	0	9	0
3	B	77	0	0	22	0
All	All	5104	0	4969	389	0



The all-atom clashscore is defined as the number of clashes found per 1000 atoms (including hydrogen atoms). The all-atom clashscore for this structure is 39.

The worst 5 of 389 close contacts within the same asymmetric unit are listed below, sorted by their clash magnitude.

Atom-1	Atom-2	Interatomic distance (Å)	Clash overlap (Å)
1:A:861:LEU:HD12	1:A:862:LEU:N	1.43	1.30
1:A:825:MET:HE2	1:A:838:LEU:HD13	1.19	1.12
1:B:803:ARG:O	1:B:806:LYS:HE2	1.54	1.06
1:B:734:GLU:HG2	1:B:735:GLY:H	1.18	1.03
1:A:867:LYS:HE2	3:A:125:HOH:O	1.58	1.02

There are no symmetry-related clashes.

## 5.3 Torsion angles [i](#)

### 5.3.1 Protein backbone [i](#)

In the following table, the Percentiles column shows the percent Ramachandran outliers of the chain as a percentile score with respect to all X-ray entries followed by that with respect to entries of similar resolution.

The Analysed column shows the number of residues for which the backbone conformation was analysed, and the total number of residues.

Mol	Chain	Analysed	Favoured	Allowed	Outliers	Percentiles	
1	A	306/331 (92%)	293 (96%)	11 (4%)	2 (1%)	22	54
1	B	303/331 (92%)	294 (97%)	9 (3%)	0	100	100
All	All	609/662 (92%)	587 (96%)	20 (3%)	2 (0%)	41	71

All (2) Ramachandran outliers are listed below:

Mol	Chain	Res	Type
1	A	1014	ASP
1	A	1019	PRO

### 5.3.2 Protein sidechains [i](#)

In the following table, the Percentiles column shows the percent sidechain outliers of the chain as a percentile score with respect to all X-ray entries followed by that with respect to entries of similar resolution.

The Analysed column shows the number of residues for which the sidechain conformation was analysed, and the total number of residues.

Mol	Chain	Analysed	Rotameric	Outliers	Percentiles	
1	A	260/290 (90%)	216 (83%)	44 (17%)	2	6
1	B	269/290 (93%)	231 (86%)	38 (14%)	3	10
All	All	529/580 (91%)	447 (84%)	82 (16%)	2	8

5 of 82 residues with a non-rotameric sidechain are listed below:

Mol	Chain	Res	Type
1	B	867	LYS
1	B	970	LYS
1	B	876	VAL
1	B	913	LYS
1	B	985	GLU

Sometimes sidechains can be flipped to improve hydrogen bonding and reduce clashes. 5 of 16 such sidechains are listed below:

Mol	Chain	Res	Type
1	B	888	HIS
1	B	805	HIS
1	A	988	HIS
1	B	787	GLN
1	A	935	GLN

### 5.3.3 RNA [i](#)

There are no RNA molecules in this entry.

## 5.4 Non-standard residues in protein, DNA, RNA chains [i](#)

There are no non-standard protein/DNA/RNA residues in this entry.

## 5.5 Carbohydrates [i](#)

There are no monosaccharides in this entry.

## 5.6 Ligand geometry

1 ligand is modelled in this entry.

In the following table, the Counts columns list the number of bonds (or angles) for which Mogul statistics could be retrieved, the number of bonds (or angles) that are observed in the model and the number of bonds (or angles) that are defined in the Chemical Component Dictionary. The Link column lists molecule types, if any, to which the group is linked. The Z score for a bond length (or angle) is the number of standard deviations the observed value is removed from the expected value. A bond length (or angle) with  $|Z| > 2$  is considered an outlier worth inspection. RMSZ is the root-mean-square of all Z scores of the bond lengths (or angles).

Mol	Type	Chain	Res	Link	Bond lengths			Bond angles		
					Counts	RMSZ	# Z  > 2	Counts	RMSZ	# Z  > 2
2	OUN	A	1797	1	37,38,38	2.21	14 (37%)	48,52,52	2.69	13 (27%)

In the following table, the Chirals column lists the number of chiral outliers, the number of chiral centers analysed, the number of these observed in the model and the number defined in the Chemical Component Dictionary. Similar counts are reported in the Torsion and Rings columns. '-' means no outliers of that kind were identified.

Mol	Type	Chain	Res	Link	Chirals	Torsions	Rings
2	OUN	A	1797	1	-	4/20/30/30	0/4/4/4

The worst 5 of 14 bond length outliers are listed below:

Mol	Chain	Res	Type	Atoms	Z	Observed(Å)	Ideal(Å)
2	A	1797	OUN	CBF-NAY	-5.17	1.31	1.41
2	A	1797	OUN	CAP-CAQ	4.57	1.52	1.30
2	A	1797	OUN	CBJ-NAZ	-4.30	1.27	1.39
2	A	1797	OUN	OBA-CBK	-3.56	1.31	1.37
2	A	1797	OUN	CBJ-CBK	-3.41	1.33	1.40

The worst 5 of 13 bond angle outliers are listed below:

Mol	Chain	Res	Type	Atoms	Z	Observed(°)	Ideal(°)
2	A	1797	OUN	CAA-OBA-CBK	-10.64	101.48	117.53
2	A	1797	OUN	CAP-CAQ-CBD	-7.71	113.45	122.27
2	A	1797	OUN	C5-C6-N1	-5.55	118.08	122.84
2	A	1797	OUN	CAU-NBO-CAT	4.82	122.16	111.52
2	A	1797	OUN	CBJ-NAZ-C2	-4.12	117.19	129.60

There are no chirality outliers.

All (4) torsion outliers are listed below:

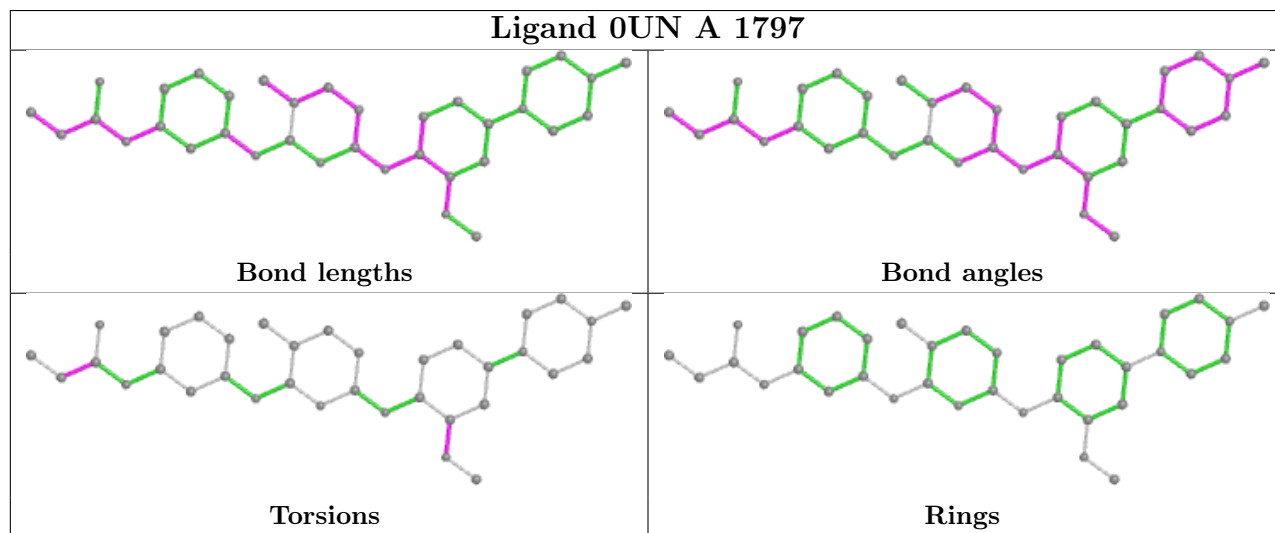
Mol	Chain	Res	Type	Atoms
2	A	1797	0UN	CAP-CAQ-CBD-NAY
2	A	1797	0UN	CAP-CAQ-CBD-OAE
2	A	1797	0UN	CBJ-CBK-OBA-CAA
2	A	1797	0UN	CAO-CBK-OBA-CAA

There are no ring outliers.

1 monomer is involved in 9 short contacts:

Mol	Chain	Res	Type	Clashes	Symm-Clashes
2	A	1797	0UN	9	0

The following is a two-dimensional graphical depiction of Mogul quality analysis of bond lengths, bond angles, torsion angles, and ring geometry for all instances of the Ligand of Interest. In addition, ligands with molecular weight > 250 and outliers as shown on the validation Tables will also be included. For torsion angles, if less than 5% of the Mogul distribution of torsion angles is within 10 degrees of the torsion angle in question, then that torsion angle is considered an outlier. Any bond that is central to one or more torsion angles identified as an outlier by Mogul will be highlighted in the graph. For rings, the root-mean-square deviation (RMSD) between the ring in question and similar rings identified by Mogul is calculated over all ring torsion angles. If the average RMSD is greater than 60 degrees and the minimal RMSD between the ring in question and any Mogul-identified rings is also greater than 60 degrees, then that ring is considered an outlier. The outliers are highlighted in purple. The color gray indicates Mogul did not find sufficient equivalents in the CSD to analyse the geometry.



## 5.7 Other polymers [\(i\)](#)

There are no such residues in this entry.

## 5.8 Polymer linkage issues

There are no chain breaks in this entry.

## 6 Fit of model and data [i](#)

### 6.1 Protein, DNA and RNA chains [i](#)

In the following table, the column labelled ‘#RSRZ > 2’ contains the number (and percentage) of RSRZ outliers, followed by percent RSRZ outliers for the chain as percentile scores relative to all X-ray entries and entries of similar resolution. The OWAB column contains the minimum, median, 95<sup>th</sup> percentile and maximum values of the occupancy-weighted average B-factor per residue. The column labelled ‘Q < 0.9’ lists the number of (and percentage) of residues with an average occupancy less than 0.9.

Mol	Chain	Analysed	<RSRZ>	#RSRZ>2	OWAB(Å <sup>2</sup> )	Q<0.9
1	A	310/331 (93%)	-0.18	10 (3%) 47 43	34, 59, 97, 118	0
1	B	310/331 (93%)	-0.09	7 (2%) 60 58	31, 58, 103, 120	0
All	All	620/662 (93%)	-0.13	17 (2%) 54 50	31, 59, 101, 120	0

The worst 5 of 17 RSRZ outliers are listed below:

Mol	Chain	Res	Type	RSRZ
1	B	873	GLY	5.9
1	B	865	GLU	3.2
1	B	697	GLU	3.1
1	A	1020	GLN	2.9
1	B	986	ARG	2.8

### 6.2 Non-standard residues in protein, DNA, RNA chains [i](#)

There are no non-standard protein/DNA/RNA residues in this entry.

### 6.3 Carbohydrates [i](#)

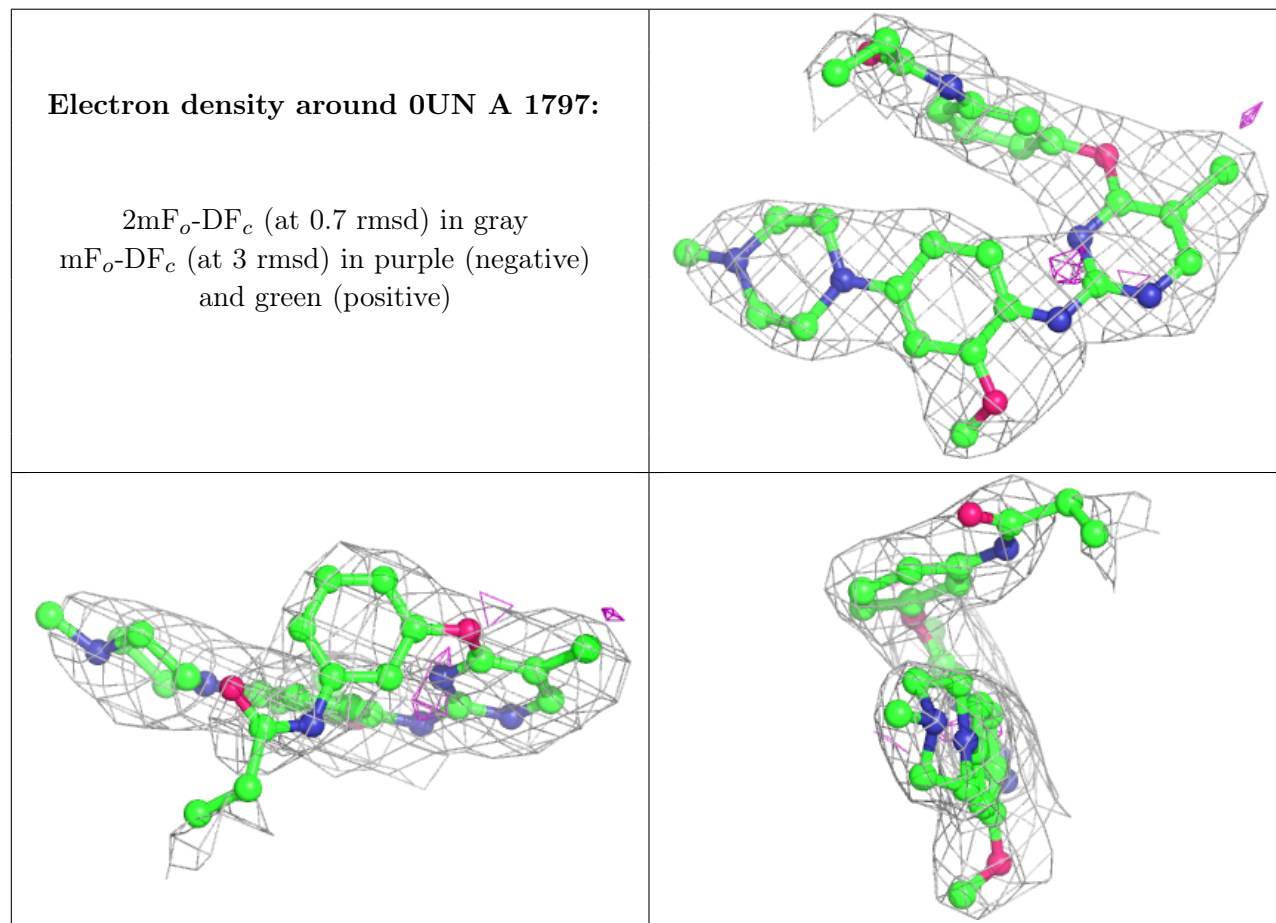
There are no monosaccharides in this entry.

### 6.4 Ligands [i](#)

In the following table, the Atoms column lists the number of modelled atoms in the group and the number defined in the chemical component dictionary. The B-factors column lists the minimum, median, 95<sup>th</sup> percentile and maximum values of B factors of atoms in the group. The column labelled ‘Q < 0.9’ lists the number of atoms with occupancy less than 0.9.

Mol	Type	Chain	Res	Atoms	RSCC	RSR	B-factors( $\text{\AA}^2$ )	Q<0.9
2	0UN	A	1797	35/35	0.90	0.21	67,69,72,76	0

The following is a graphical depiction of the model fit to experimental electron density of all instances of the Ligand of Interest. In addition, ligands with molecular weight > 250 and outliers as shown on the geometry validation Tables will also be included. Each fit is shown from different orientation to approximate a three-dimensional view.



## 6.5 Other polymers [i](#)

There are no such residues in this entry.