



Full wwPDB X-ray Structure Validation Report ⓘ

Oct 3, 2021 – 11:03 AM EDT

PDB ID : 3IB9
Title : Propionyl-CoA Carboxylase Beta Subunit, D422L
Authors : Diacovich, L.; Arabolaza, A.; Shillito, E.M.; Lin, T.-W.; Mitchell, D.L.; Pham, H.; Melgar, M.M.
Deposited on : 2009-07-15
Resolution : 2.00 Å(reported)

This is a Full wwPDB X-ray Structure Validation Report for a publicly released PDB entry.

We welcome your comments at validation@mail.wwpdb.org

A user guide is available at

<https://www.wwpdb.org/validation/2017/XrayValidationReportHelp>

with specific help available everywhere you see the ⓘ symbol.

The following versions of software and data (see [references ⓘ](#)) were used in the production of this report:

MolProbity : 4.02b-467
Mogul : 1.8.5 (274361), CSD as541be (2020)
Xtriage (Phenix) : 1.13
EDS : 2.23.2
Percentile statistics : 20191225.v01 (using entries in the PDB archive December 25th 2019)
Refmac : 5.8.0158
CCP4 : 7.0.044 (Gargrove)
Ideal geometry (proteins) : Engh & Huber (2001)
Ideal geometry (DNA, RNA) : Parkinson et al. (1996)
Validation Pipeline (wwPDB-VP) : 2.23.2

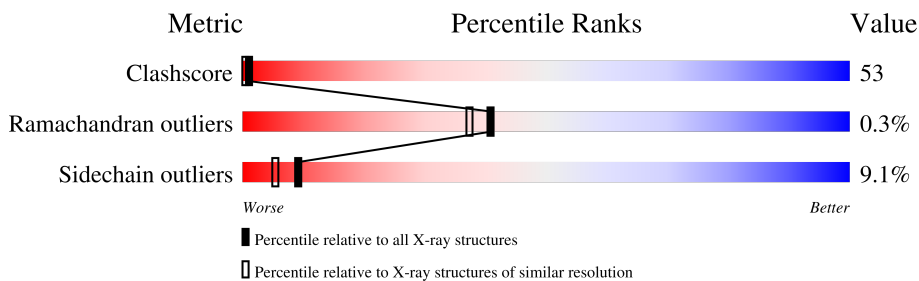
1 Overall quality at a glance

The following experimental techniques were used to determine the structure:

X-RAY DIFFRACTION



The reported resolution of this entry is 2.00 Å.

Percentile scores (ranging between 0-100) for global validation metrics of the entry are shown in the following graphic. The table shows the number of entries on which the scores are based.



Metric	Whole archive (#Entries)	Similar resolution (#Entries, resolution range(Å))
Clashscore	141614	9178 (2.00-2.00)
Ramachandran outliers	138981	9054 (2.00-2.00)
Sidechain outliers	138945	9053 (2.00-2.00)

The table below summarises the geometric issues observed across the polymeric chains and their fit to the electron density. The red, orange, yellow and green segments of the lower bar indicate the fraction of residues that contain outliers for ≥ 3 , 2, 1 and 0 types of geometric quality criteria respectively. A grey segment represents the fraction of residues that are not modelled. The numeric value for each fraction is indicated below the corresponding segment, with a dot representing fractions $\leq 5\%$.

Mol	Chain	Length	Quality of chain
1	A	530	 42% 51% 5% .
1	B	530	 42% 51% 6% .

2 Entry composition [i](#)

There are 4 unique types of molecules in this entry. The entry contains 8285 atoms, of which 0 are hydrogens and 0 are deuteriums.

In the tables below, the ZeroOcc column contains the number of atoms modelled with zero occupancy, the AltConf column contains the number of residues with at least one atom in alternate conformation and the Trace column contains the number of residues modelled with at most 2 atoms.

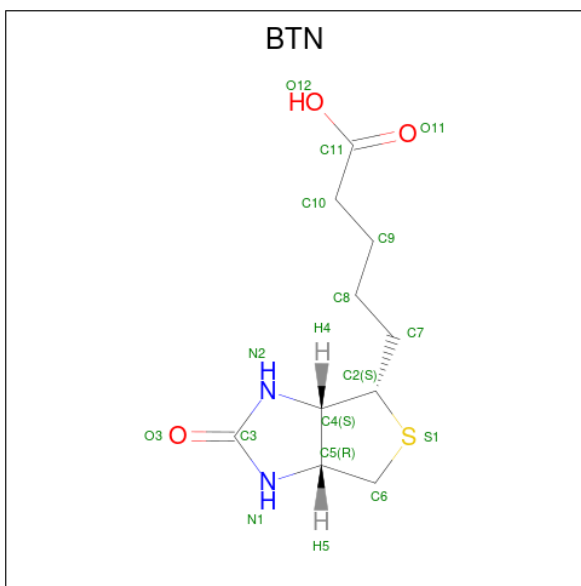
- Molecule 1 is a protein called Propionyl-CoA carboxylase complex B subunit.

Mol	Chain	Residues	Atoms					ZeroOcc	AltConf	Trace
			Total	C	N	O	S			
1	A	521	Total 3952	C 2483	N 698	O 758	S 13	0	0	0
1	B	521	Total 3952	C 2483	N 698	O 758	S 13	0	0	0

There are 2 discrepancies between the modelled and reference sequences:

Chain	Residue	Modelled	Actual	Comment	Reference
A	422	LEU	ASP	engineered mutation	UNP Q9X4K7
B	422	LEU	ASP	engineered mutation	UNP Q9X4K7

- Molecule 2 is BIOTIN (three-letter code: BTN) (formula: C₁₀H₁₆N₂O₃S).



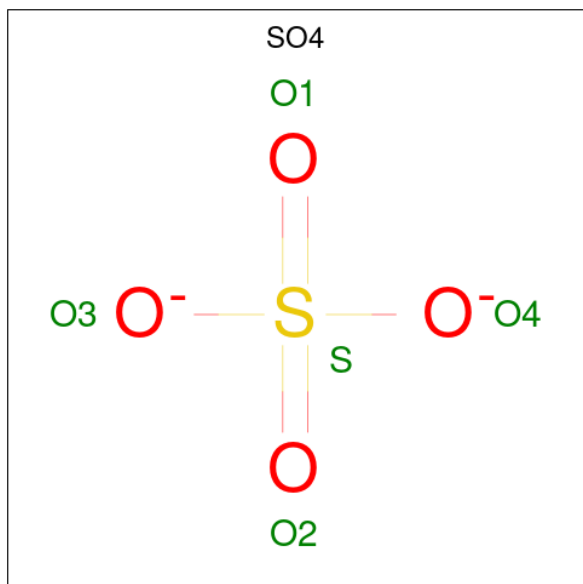
Mol	Chain	Residues	Atoms					ZeroOcc	AltConf
			Total	C	N	O	S		
2	A	1	Total 16	C 10	N 2	O 3	S 1	0	0

Continued on next page...

Continued from previous page...

Mol	Chain	Residues	Atoms					ZeroOcc	AltConf
			Total	C	N	O	S		
2	B	1	16	10	2	3	1	0	0

- Molecule 3 is SULFATE ION (three-letter code: SO4) (formula: O₄S).



Mol	Chain	Residues	Atoms			ZeroOcc	AltConf
			Total	O	S		
3	A	1	5	4	1	0	0
3	B	1	5	4	1	0	0

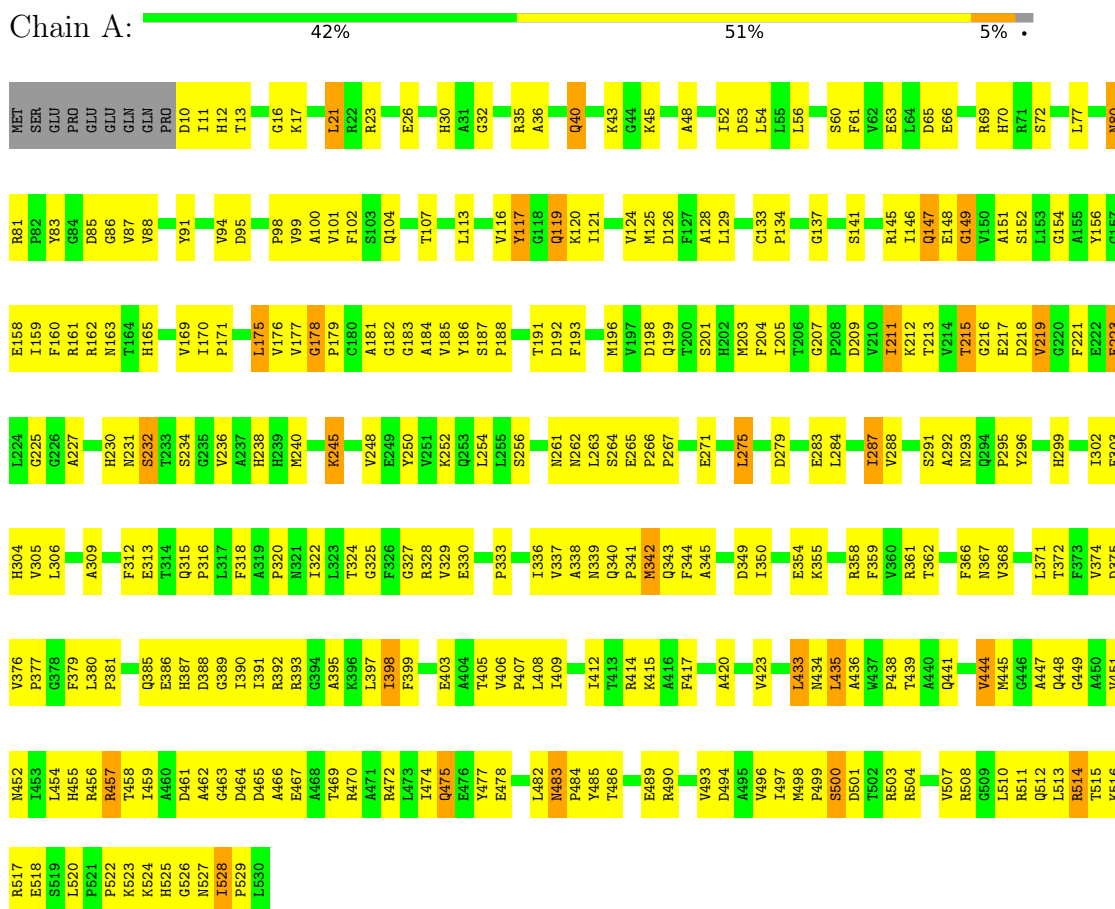
- Molecule 4 is water.

Mol	Chain	Residues	Atoms		ZeroOcc	AltConf
			Total	O		
4	A	167	167	167	0	0
4	B	172	172	172	0	0

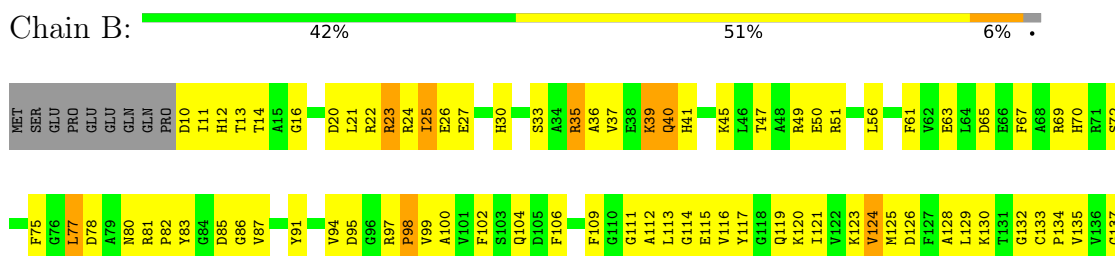
3 Residue-property plots [i](#)

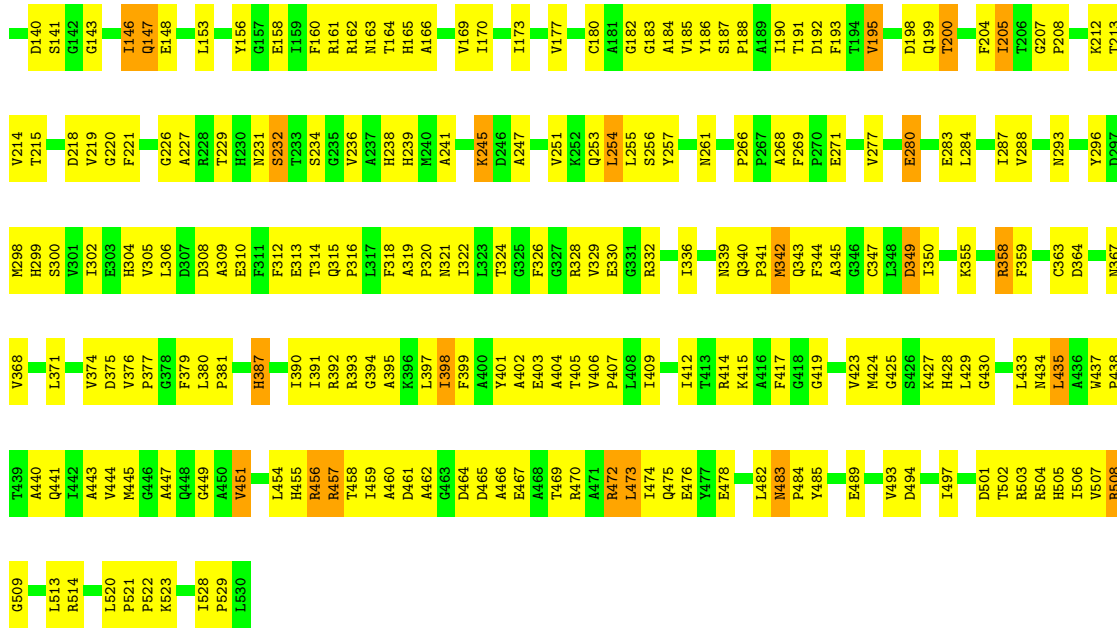
These plots are drawn for all protein, RNA, DNA and oligosaccharide chains in the entry. The first graphic for a chain summarises the proportions of the various outlier classes displayed in the second graphic. The second graphic shows the sequence view annotated by issues in geometry. Residues are color-coded according to the number of geometric quality criteria for which they contain at least one outlier: green = 0, yellow = 1, orange = 2 and red = 3 or more. Stretches of 2 or more consecutive residues without any outlier are shown as a green connector. Residues present in the sample, but not in the model, are shown in grey.

- Molecule 1: Propionyl-CoA carboxylase complex B subunit



- Molecule 1: Propionyl-CoA carboxylase complex B subunit





4 Data and refinement statistics

Property	Value	Source
Space group	P 63	Depositor
Cell constants a, b, c, α , β , γ	168.49Å 168.49Å 80.31Å 90.00° 90.00° 120.00°	Depositor
Resolution (Å)	50.00 – 2.00 29.60 – 1.90	Depositor EDS
% Data completeness (in resolution range)	75.7 (50.00-2.00) 70.8 (29.60-1.90)	Depositor EDS
R_{merge}	(Not available)	Depositor
R_{sym}	(Not available)	Depositor
$\langle I/\sigma(I) \rangle$ ¹	-3.70 (at 1.89Å)	Xtrriage
Refinement program	CNS	Depositor
R, R_{free}	0.246 , 0.274 0.317 , (Not available)	Depositor DCC
R_{free} test set	No test flags present.	wwPDB-VP
Wilson B-factor (Å ²)	15.8	Xtrriage
Anisotropy	0.107	Xtrriage
Bulk solvent k_{sol} (e/Å ³), B_{sol} (Å ²)	0.36 , 31.2	EDS
L-test for twinning ²	$\langle L \rangle = 0.50$, $\langle L^2 \rangle = 0.34$	Xtrriage
Estimated twinning fraction	0.028 for h,-h-k,-l	Xtrriage
F_o, F_c correlation	0.85	EDS
Total number of atoms	8285	wwPDB-VP
Average B, all atoms (Å ²)	34.0	wwPDB-VP

Xtrriage's analysis on translational NCS is as follows: *The largest off-origin peak in the Patterson function is 14.06% of the height of the origin peak. No significant pseudotranslation is detected.*

¹Intensities estimated from amplitudes.

²Theoretical values of $\langle |L| \rangle$, $\langle L^2 \rangle$ for acentric reflections are 0.5, 0.333 respectively for untwinned datasets, and 0.375, 0.2 for perfectly twinned datasets.

5 Model quality [i](#)

5.1 Standard geometry [i](#)

Bond lengths and bond angles in the following residue types are not validated in this section: SO4, BTN

The Z score for a bond length (or angle) is the number of standard deviations the observed value is removed from the expected value. A bond length (or angle) with $|Z| > 5$ is considered an outlier worth inspection. RMSZ is the root-mean-square of all Z scores of the bond lengths (or angles).

Mol	Chain	Bond lengths		Bond angles	
		RMSZ	# Z >5	RMSZ	# Z >5
1	A	0.23	0/4032	0.49	2/5478 (0.0%)
1	B	0.24	0/4032	0.49	0/5478
All	All	0.24	0/8064	0.49	2/10956 (0.0%)

There are no bond length outliers.

All (2) bond angle outliers are listed below:

Mol	Chain	Res	Type	Atoms	Z	Observed(°)	Ideal(°)
1	A	178	GLY	C-N-CD	-5.88	107.67	120.60
1	A	149	GLY	N-CA-C	5.04	125.69	113.10

There are no chirality outliers.

There are no planarity outliers.

5.2 Too-close contacts [i](#)

In the following table, the Non-H and H(model) columns list the number of non-hydrogen atoms and hydrogen atoms in the chain respectively. The H(added) column lists the number of hydrogen atoms added and optimized by MolProbity. The Clashes column lists the number of clashes within the asymmetric unit, whereas Symm-Clashes lists symmetry-related clashes.

Mol	Chain	Non-H	H(model)	H(added)	Clashes	Symm-Clashes
1	A	3952	0	3887	461	0
1	B	3952	0	3887	432	0
2	A	16	0	15	2	0
2	B	16	0	15	2	0
3	A	5	0	0	0	0
3	B	5	0	0	0	0
4	A	167	0	0	10	0

Continued on next page...

Continued from previous page...

Mol	Chain	Non-H	H(model)	H(added)	Clashes	Symm-Clashes
4	B	172	0	0	13	0
All	All	8285	0	7804	842	0

The all-atom clashscore is defined as the number of clashes found per 1000 atoms (including hydrogen atoms). The all-atom clashscore for this structure is 53.

All (842) close contacts within the same asymmetric unit are listed below, sorted by their clash magnitude.

Atom-1	Atom-2	Interatomic distance (Å)	Clash overlap (Å)
1:A:87:VAL:HB	1:A:117:TYR:CE2	1.33	1.57
1:A:456:ARG:NH1	1:A:457:ARG:HH22	1.30	1.29
1:A:87:VAL:HB	1:A:117:TYR:CD2	1.68	1.26
1:B:113:LEU:HD13	1:B:156:TYR:CE1	1.72	1.25
1:A:456:ARG:NH1	1:A:457:ARG:NH2	1.91	1.18
1:A:212:LYS:HD3	1:A:218:ASP:OD1	1.40	1.18
1:A:397:LEU:HD23	1:A:423:VAL:CG1	1.73	1.17
1:B:113:LEU:HD22	1:B:156:TYR:CE1	1.81	1.15
1:A:87:VAL:CB	1:A:117:TYR:CE2	2.30	1.15
1:B:113:LEU:CD1	1:B:156:TYR:HE1	1.62	1.13
1:A:362:THR:O	1:A:366:PHE:HD2	1.33	1.11
1:B:21:LEU:O	1:B:25:ILE:HG22	1.50	1.11
1:B:193:PHE:HA	1:B:238:HIS:CE1	1.87	1.10
1:B:457:ARG:HH11	1:B:457:ARG:CG	1.65	1.10
1:B:397:LEU:HD23	1:B:423:VAL:CG1	1.82	1.09
1:A:187:SER:HB3	1:A:188:PRO:HD3	1.34	1.09
1:A:146:ILE:HG22	1:B:454:LEU:HD11	1.35	1.08
1:A:203:MET:HB2	1:A:230:HIS:NE2	1.68	1.08
1:A:160:PHE:HE1	1:A:187:SER:HB2	1.18	1.08
1:B:113:LEU:HB3	1:B:156:TYR:OH	1.53	1.08
1:A:104:GLN:HG2	1:A:117:TYR:OH	1.54	1.07
1:A:478:GLU:HA	1:A:482:LEU:CD1	1.84	1.07
1:B:349:ASP:CB	1:B:380:LEU:HD12	1.85	1.07
1:A:390:ILE:HG21	1:B:205:ILE:HD11	1.12	1.07
1:A:478:GLU:CA	1:A:482:LEU:HD13	1.85	1.07
1:A:87:VAL:CB	1:A:117:TYR:CD2	2.38	1.05
1:B:392:ARG:HG3	1:B:393:ARG:HG3	1.39	1.05
1:A:146:ILE:CG2	1:B:454:LEU:HD11	1.86	1.04
1:B:113:LEU:HD13	1:B:156:TYR:HE1	0.89	1.04
1:A:478:GLU:HA	1:A:482:LEU:HD13	1.04	1.03
1:A:87:VAL:HB	1:A:117:TYR:HE2	1.21	1.02
1:B:397:LEU:HD23	1:B:423:VAL:HG11	1.39	1.02

Continued on next page...

Continued from previous page...

Atom-1	Atom-2	Interatomic distance (Å)	Clash overlap (Å)
1:B:457:ARG:HH11	1:B:457:ARG:HG2	0.88	1.02
1:B:509:GLY:O	1:B:513:LEU:HG	1.60	1.00
1:A:215:THR:HG21	4:A:575:HOH:O	1.62	0.99
1:B:347:CYS:SG	1:B:377:PRO:HG2	2.01	0.99
1:A:397:LEU:HD23	1:A:423:VAL:HG11	1.44	0.99
1:A:160:PHE:CE1	1:A:187:SER:HB2	1.98	0.98
1:A:32:GLY:HA3	1:A:107:THR:HG21	1.43	0.98
1:B:349:ASP:HB2	1:B:380:LEU:HD12	1.42	0.98
1:A:10:ASP:O	1:A:16:GLY:HA3	1.63	0.97
1:A:32:GLY:HA3	1:A:107:THR:CG2	1.94	0.97
1:A:395:ALA:O	1:A:398:ILE:HG23	1.63	0.96
1:A:113:LEU:HD12	1:A:117:TYR:HD1	1.30	0.96
1:B:87:VAL:HB	1:B:117:TYR:CE2	2.00	0.96
1:B:257:TYR:CE1	1:B:328:ARG:NH1	2.34	0.95
1:B:98:PRO:O	1:B:99:VAL:HG23	1.67	0.94
1:A:231:ASN:OD1	1:A:240:MET:HB2	1.66	0.94
1:A:405:THR:HG21	1:A:518:GLU:O	1.66	0.94
1:B:326:PHE:HE1	1:B:363:CYS:HG	0.94	0.94
1:A:377:PRO:HG3	1:A:415:LYS:HD3	1.50	0.93
1:A:392:ARG:HG3	1:A:393:ARG:HG3	1.48	0.93
1:A:390:ILE:HG21	1:B:205:ILE:CD1	1.96	0.93
1:A:99:VAL:HG22	1:A:134:PRO:HB2	1.50	0.93
1:B:470:ARG:O	1:B:474:ILE:HG13	1.69	0.93
1:B:445:MET:HE2	1:B:449:GLY:C	1.88	0.93
1:B:198:ASP:OD1	1:B:199:GLN:HG2	1.67	0.93
1:A:362:THR:O	1:A:366:PHE:CD2	2.22	0.92
1:B:187:SER:HB3	1:B:188:PRO:HD3	1.51	0.92
1:A:193:PHE:HA	1:A:238:HIS:CE1	2.04	0.92
1:A:483:ASN:HB2	1:A:484:PRO:HD2	1.50	0.92
1:A:451:VAL:HG21	1:A:474:ILE:HG12	1.51	0.91
1:B:440:ALA:O	1:B:484:PRO:HD3	1.71	0.91
1:B:200:THR:HG23	1:B:200:THR:O	1.70	0.91
1:B:113:LEU:CD2	1:B:156:TYR:CE1	2.54	0.91
1:A:380:LEU:HD22	1:A:381:PRO:HD2	1.49	0.90
1:A:467:GLU:HG3	1:A:470:ARG:HH21	1.34	0.90
1:B:457:ARG:HG2	1:B:457:ARG:NH1	1.62	0.90
1:A:87:VAL:CG1	1:A:117:TYR:CD2	2.54	0.90
1:B:241:ALA:HB3	1:B:247:ALA:HB2	1.53	0.89
1:A:457:ARG:HH11	1:A:457:ARG:CG	1.85	0.88
1:B:409:ILE:HD11	1:B:513:LEU:HD12	1.54	0.88
1:A:196:MET:SD	1:A:203:MET:HE2	2.13	0.88

Continued on next page...

Continued from previous page...

Atom-1	Atom-2	Interatomic distance (Å)	Clash overlap (Å)
1:B:163:ASN:HB3	1:B:190:ILE:HG21	1.55	0.88
1:B:315:GLN:OE1	1:B:355:LYS:HG3	1.74	0.88
1:A:265:GLU:HG2	1:A:266:PRO:HD2	1.56	0.88
1:A:398:ILE:CD1	1:B:160:PHE:HB3	2.03	0.88
1:B:528:ILE:HG12	1:B:529:PRO:HD2	1.56	0.87
1:A:447:ALA:HB2	1:A:482:LEU:HD21	1.57	0.87
1:A:113:LEU:HD12	1:A:117:TYR:CD1	2.09	0.87
1:A:212:LYS:CD	1:A:218:ASP:OD1	2.23	0.87
1:A:147:GLN:H	1:A:147:GLN:HE21	1.15	0.87
1:B:113:LEU:CD1	1:B:156:TYR:CE1	2.47	0.87
1:B:528:ILE:CG1	1:B:529:PRO:HD2	2.04	0.86
1:A:397:LEU:CD2	1:A:423:VAL:CG1	2.53	0.86
1:A:456:ARG:HH11	1:A:457:ARG:HH22	0.86	0.86
1:A:391:ILE:HG13	4:A:602:HOH:O	1.75	0.86
1:A:405:THR:CG2	1:A:518:GLU:O	2.22	0.86
1:A:86:GLY:O	1:A:117:TYR:CE2	2.29	0.86
1:A:511:ARG:O	1:A:514:ARG:HG2	1.75	0.86
1:B:397:LEU:CD2	1:B:423:VAL:CG1	2.53	0.85
1:A:447:ALA:O	1:A:451:VAL:HG13	1.76	0.85
1:B:113:LEU:HB3	1:B:156:TYR:CZ	2.11	0.85
1:A:104:GLN:CG	1:A:117:TYR:OH	2.25	0.85
1:A:451:VAL:HG11	1:A:474:ILE:HA	1.59	0.85
1:B:245:LYS:HZ3	1:B:245:LYS:HB2	1.42	0.85
1:A:85:ASP:O	1:A:117:TYR:HB2	1.77	0.84
1:A:459:ILE:CD1	1:A:470:ARG:HB2	2.06	0.84
1:B:25:ILE:HD12	4:B:644:HOH:O	1.77	0.84
1:B:113:LEU:HG	1:B:117:TYR:CD1	2.11	0.84
1:A:117:TYR:CD1	1:A:117:TYR:O	2.30	0.84
1:B:70:HIS:CE1	1:B:81:ARG:HG2	2.14	0.83
1:A:503:ARG:O	1:A:507:VAL:HG23	1.80	0.82
1:B:98:PRO:O	1:B:99:VAL:CG2	2.27	0.82
1:B:269:PHE:O	1:B:269:PHE:CD2	2.32	0.82
1:B:302:ILE:O	1:B:305:VAL:HG22	1.80	0.82
1:A:456:ARG:HH11	1:A:457:ARG:NH2	1.60	0.82
1:A:315:GLN:OE1	1:A:355:LYS:HG3	1.79	0.81
1:B:102:PHE:CZ	1:B:137:GLY:HA3	2.14	0.81
1:A:287:ILE:HG12	1:A:287:ILE:O	1.79	0.81
1:A:341:PRO:HG3	1:A:375:ASP:OD2	1.81	0.81
1:B:170:ILE:HG22	1:B:261:ASN:HB3	1.62	0.81
1:B:455:HIS:NE2	1:B:473:LEU:HG	1.95	0.81
1:B:86:GLY:O	1:B:117:TYR:HE2	1.64	0.81

Continued on next page...

Continued from previous page...

Atom-1	Atom-2	Interatomic distance (Å)	Clash overlap (Å)
1:A:149:GLY:O	1:B:444:VAL:HG23	1.81	0.81
1:A:113:LEU:O	1:A:145:ARG:HB2	1.79	0.80
1:A:70:HIS:HD2	1:A:72:SER:H	1.30	0.80
1:B:326:PHE:HE1	1:B:363:CYS:SG	2.05	0.80
1:B:398:ILE:HG13	1:B:399:PHE:N	1.95	0.80
1:A:175:LEU:HD22	1:A:177:VAL:HG13	1.63	0.80
1:B:475:GLN:HA	1:B:478:GLU:OE1	1.82	0.80
1:A:520:LEU:HD22	1:B:165:HIS:CD2	2.16	0.79
1:B:200:THR:O	1:B:200:THR:CG2	2.30	0.79
1:A:98:PRO:O	1:A:99:VAL:HG23	1.83	0.79
1:A:149:GLY:O	1:B:444:VAL:CG2	2.30	0.79
1:A:371:LEU:HD21	1:A:510:LEU:HD11	1.65	0.79
1:A:113:LEU:HD23	1:A:156:TYR:CZ	2.18	0.79
1:B:23:ARG:O	1:B:23:ARG:CD	2.31	0.78
1:A:113:LEU:HD23	1:A:156:TYR:CE2	2.18	0.78
1:B:113:LEU:CG	1:B:156:TYR:CE1	2.67	0.78
1:B:115:GLU:HG2	1:B:119:GLN:OE1	1.82	0.78
1:A:145:ARG:HD2	1:A:148:GLU:OE2	1.82	0.78
1:A:146:ILE:HG22	1:B:454:LEU:CD1	2.13	0.78
1:A:474:ILE:O	1:A:478:GLU:HG3	1.84	0.78
1:B:445:MET:HE3	1:B:449:GLY:HA3	1.66	0.78
1:A:380:LEU:HD13	1:A:380:LEU:C	2.05	0.77
1:B:35:ARG:O	1:B:39:LYS:HG2	1.85	0.77
1:A:398:ILE:HG13	1:A:399:PHE:N	1.98	0.77
1:A:147:GLN:H	1:A:147:GLN:NE2	1.81	0.77
1:B:415:LYS:HG2	1:B:417:PHE:HE2	1.49	0.77
1:A:362:THR:HG23	1:A:366:PHE:HE2	1.50	0.76
1:A:470:ARG:O	1:A:474:ILE:HG13	1.85	0.76
1:A:302:ILE:O	1:A:305:VAL:HG22	1.85	0.76
1:B:379:PHE:O	1:B:381:PRO:HD3	1.84	0.76
1:B:23:ARG:HD2	1:B:27:GLU:OE1	1.85	0.76
1:B:121:ILE:O	1:B:125:MET:HG3	1.84	0.76
1:A:160:PHE:HB3	1:B:398:ILE:HD13	1.65	0.76
1:B:316:PRO:HD2	4:B:547:HOH:O	1.85	0.76
1:A:467:GLU:HG3	1:A:470:ARG:NH2	2.01	0.75
1:A:350:ILE:H	1:A:385:GLN:HE22	1.34	0.75
1:A:459:ILE:HD13	1:A:470:ARG:HB2	1.66	0.75
1:A:10:ASP:O	1:A:16:GLY:CA	2.34	0.75
1:A:457:ARG:HH11	1:A:457:ARG:HG2	1.49	0.75
1:A:113:LEU:HD22	1:A:156:TYR:CE1	2.21	0.75
1:A:339:ASN:HB2	1:A:375:ASP:O	1.87	0.75

Continued on next page...

Continued from previous page...

Atom-1	Atom-2	Interatomic distance (Å)	Clash overlap (Å)
1:B:409:ILE:HD11	1:B:513:LEU:CD1	2.16	0.75
1:B:113:LEU:HD22	1:B:156:TYR:CD1	2.22	0.74
1:B:445:MET:CE	1:B:449:GLY:C	2.55	0.74
1:A:520:LEU:CD2	1:B:165:HIS:NE2	2.50	0.74
1:A:87:VAL:HG12	1:A:117:TYR:CD2	2.21	0.74
1:A:275:LEU:HD21	1:A:507:VAL:HG11	1.68	0.74
1:B:70:HIS:CD2	4:B:566:HOH:O	2.39	0.74
1:A:513:LEU:O	1:A:516:LYS:N	2.20	0.74
1:A:10:ASP:O	1:A:10:ASP:OD1	2.06	0.74
1:A:187:SER:HB3	1:A:188:PRO:CD	2.17	0.74
1:B:70:HIS:CE1	1:B:77:LEU:O	2.41	0.74
1:A:320:PRO:HB2	1:A:343:GLN:HG3	1.68	0.74
1:B:326:PHE:CE1	1:B:363:CYS:SG	2.80	0.74
1:A:227:ALA:HB1	1:A:240:MET:HG3	1.70	0.74
1:A:154:GLY:HA2	1:B:428:HIS:CE1	2.21	0.73
1:B:104:GLN:HG2	1:B:117:TYR:OH	1.88	0.73
1:B:528:ILE:HG12	1:B:529:PRO:CD	2.18	0.73
1:A:316:PRO:HD2	4:A:600:HOH:O	1.89	0.73
1:A:469:THR:O	1:A:472:ARG:HB3	1.89	0.73
1:B:287:ILE:HG23	1:B:288:VAL:N	2.03	0.73
1:A:265:GLU:HG2	1:A:266:PRO:CD	2.19	0.73
1:A:405:THR:O	1:A:516:LYS:CE	2.37	0.72
1:A:146:ILE:CG2	1:B:454:LEU:CD1	2.65	0.72
1:B:158:GLU:OE2	1:B:161:ARG:NH1	2.22	0.72
1:A:513:LEU:O	1:A:515:THR:N	2.23	0.72
1:B:277:VAL:HG23	1:B:277:VAL:O	1.89	0.72
1:B:23:ARG:O	1:B:23:ARG:HD2	1.89	0.72
1:B:87:VAL:HG12	1:B:117:TYR:CD2	2.25	0.72
1:B:113:LEU:HG	1:B:117:TYR:HD1	1.50	0.72
1:A:193:PHE:HD1	1:A:238:HIS:CD2	2.07	0.71
1:A:293:ASN:O	1:A:295:PRO:HD3	1.90	0.71
1:A:299:HIS:HE1	1:A:313:GLU:OE2	1.72	0.71
1:B:254:LEU:HD13	1:B:312:PHE:HE2	1.56	0.71
1:B:445:MET:HE2	1:B:449:GLY:O	1.90	0.71
1:B:339:ASN:ND2	1:B:424:MET:HE1	2.05	0.71
1:A:32:GLY:CA	1:A:107:THR:CG2	2.68	0.71
1:A:113:LEU:CD2	1:A:156:TYR:CE1	2.74	0.70
1:A:215:THR:HG23	1:A:215:THR:O	1.88	0.70
1:B:339:ASN:HD21	1:B:424:MET:HE1	1.56	0.70
1:B:451:VAL:HB	1:B:455:HIS:HD2	1.55	0.70
1:B:106:PHE:HB2	1:B:140:ASP:OD2	1.91	0.70

Continued on next page...

Continued from previous page...

Atom-1	Atom-2	Interatomic distance (Å)	Clash overlap (Å)
1:A:398:ILE:HD13	1:B:160:PHE:HB3	1.71	0.70
1:A:292:ALA:O	1:A:414:ARG:NH1	2.25	0.70
1:A:399:PHE:CD1	1:B:164:THR:HG23	2.27	0.70
1:A:504:ARG:HG2	1:A:508:ARG:HD2	1.72	0.70
1:B:80:ASN:C	1:B:82:PRO:HD3	2.13	0.70
1:A:196:MET:O	1:A:240:MET:HA	1.92	0.70
1:B:115:GLU:O	1:B:119:GLN:HG3	1.92	0.70
1:B:298:MET:HG3	1:B:298:MET:O	1.92	0.69
1:B:485:TYR:O	1:B:489:GLU:HG3	1.92	0.69
1:A:344:PHE:O	1:A:345:ALA:HB3	1.91	0.69
1:B:374:VAL:HB	1:B:412:ILE:HA	1.72	0.69
1:A:399:PHE:CE1	1:B:164:THR:HG23	2.27	0.69
1:B:349:ASP:HB3	1:B:380:LEU:HD12	1.72	0.69
1:B:193:PHE:HD1	1:B:238:HIS:CD2	2.09	0.69
1:B:102:PHE:CZ	1:B:137:GLY:CA	2.75	0.69
1:B:339:ASN:HD21	1:B:424:MET:CE	2.06	0.69
1:A:329:VAL:O	1:A:330:GLU:HB2	1.92	0.69
1:A:354:GLU:OE2	1:B:392:ARG:NH1	2.21	0.69
1:B:10:ASP:CG	1:B:11:ILE:H	1.94	0.69
1:A:165:HIS:CD2	1:B:520:LEU:HD22	2.28	0.69
1:A:231:ASN:O	1:A:318:PHE:HB2	1.93	0.69
1:B:349:ASP:CB	1:B:380:LEU:CD1	2.68	0.69
1:B:22:ARG:HA	1:B:25:ILE:CG2	2.22	0.69
1:A:36:ALA:HB3	1:A:107:THR:HG23	1.74	0.69
1:A:254:LEU:HD23	1:A:312:PHE:HE2	1.57	0.69
1:B:160:PHE:HE1	1:B:187:SER:HB2	1.57	0.69
1:B:447:ALA:O	1:B:451:VAL:HG13	1.92	0.69
1:A:266:PRO:HG2	1:A:368:VAL:HG22	1.76	0.68
1:A:397:LEU:CD2	1:A:423:VAL:HG12	2.23	0.68
1:A:266:PRO:CG	1:A:368:VAL:HG22	2.24	0.68
1:A:457:ARG:CG	1:A:457:ARG:NH1	2.52	0.68
1:A:524:LYS:HD3	4:B:697:HOH:O	1.93	0.68
1:A:367:ASN:HA	1:A:406:VAL:HG11	1.75	0.68
1:A:32:GLY:CA	1:A:107:THR:HG21	2.22	0.68
1:A:380:LEU:HD13	1:A:380:LEU:O	1.94	0.67
1:B:438:PRO:HD3	1:B:497:ILE:O	1.94	0.67
1:A:113:LEU:CD1	1:A:117:TYR:CD1	2.77	0.67
1:A:407:PRO:HB3	1:A:513:LEU:HD23	1.76	0.67
1:A:455:HIS:O	1:A:459:ILE:HG22	1.95	0.67
1:A:520:LEU:CD2	1:B:165:HIS:CE1	2.77	0.67
1:B:456:ARG:O	1:B:459:ILE:CG2	2.42	0.67

Continued on next page...

Continued from previous page...

Atom-1	Atom-2	Interatomic distance (Å)	Clash overlap (Å)
1:A:207:GLY:O	1:A:211:ILE:HG23	1.95	0.67
1:A:485:TYR:O	1:A:489:GLU:HG3	1.94	0.67
1:B:254:LEU:HD13	1:B:312:PHE:CE2	2.29	0.67
1:A:221:PHE:CB	2:A:5600:BTN:H81	2.24	0.67
1:A:120:LYS:O	1:A:124:VAL:HG23	1.94	0.67
1:A:339:ASN:CB	1:A:375:ASP:O	2.43	0.67
1:A:501:ASP:OD1	1:A:501:ASP:O	2.13	0.67
1:B:113:LEU:CB	1:B:156:TYR:OH	2.40	0.67
1:A:181:ALA:CB	1:A:204:PHE:CE1	2.78	0.66
1:B:231:ASN:HD21	1:B:239:HIS:N	1.93	0.66
1:B:241:ALA:CB	1:B:247:ALA:HB2	2.23	0.66
1:B:339:ASN:O	1:B:341:PRO:HD3	1.96	0.66
1:B:456:ARG:O	1:B:459:ILE:HG23	1.96	0.66
1:A:456:ARG:O	1:A:457:ARG:HG3	1.96	0.66
1:A:482:LEU:N	1:A:482:LEU:HD12	2.10	0.66
1:B:459:ILE:HD13	1:B:470:ARG:HB2	1.77	0.66
1:B:509:GLY:O	1:B:513:LEU:CG	2.41	0.66
1:B:349:ASP:HB3	1:B:380:LEU:CD1	2.26	0.66
1:B:11:ILE:HG23	1:B:12:HIS:N	2.10	0.66
1:B:407:PRO:HB3	1:B:513:LEU:HB3	1.77	0.66
1:A:406:VAL:HG12	4:B:625:HOH:O	1.95	0.66
1:B:287:ILE:CG2	1:B:288:VAL:N	2.59	0.66
1:A:85:ASP:OD2	1:A:116:VAL:HB	1.96	0.65
1:A:386:GLU:OE2	1:B:204:PHE:HA	1.96	0.65
1:B:392:ARG:CG	1:B:393:ARG:HG3	2.23	0.65
1:A:462:ALA:O	1:A:464:ASP:N	2.29	0.65
1:A:121:ILE:O	1:A:121:ILE:HG22	1.95	0.65
1:A:113:LEU:CD2	1:A:156:TYR:CZ	2.79	0.65
1:B:41:HIS:ND1	4:B:617:HOH:O	2.28	0.65
1:A:119:GLN:O	1:A:119:GLN:NE2	2.30	0.65
1:A:193:PHE:CD1	1:A:238:HIS:CD2	2.84	0.65
1:B:508:ARG:HD3	4:B:637:HOH:O	1.96	0.65
1:A:70:HIS:CE1	1:A:81:ARG:HG2	2.32	0.65
1:A:477:TYR:HD1	1:A:482:LEU:HD11	1.61	0.65
1:B:129:LEU:HD21	1:B:166:ALA:HB2	1.78	0.65
1:A:490:ARG:NH2	1:B:115:GLU:OE1	2.30	0.65
1:B:114:GLY:HA3	1:B:148:GLU:OE2	1.97	0.65
1:B:245:LYS:HB2	1:B:245:LYS:NZ	2.11	0.64
1:A:362:THR:CG2	1:A:366:PHE:CE2	2.81	0.64
1:B:23:ARG:O	1:B:23:ARG:NE	2.30	0.64
1:A:362:THR:HG23	1:A:366:PHE:CE2	2.32	0.64

Continued on next page...

Continued from previous page...

Atom-1	Atom-2	Interatomic distance (Å)	Clash overlap (Å)
1:B:77:LEU:HD21	1:B:109:PHE:CE1	2.32	0.64
1:B:502:THR:O	1:B:506:ILE:HG12	1.97	0.64
1:B:347:CYS:SG	1:B:377:PRO:CG	2.83	0.64
1:B:113:LEU:HD22	1:B:156:TYR:CZ	2.33	0.64
1:A:392:ARG:HG3	1:A:393:ARG:CG	2.26	0.64
1:B:23:ARG:HH21	1:B:24:ARG:HG3	1.63	0.64
1:B:114:GLY:CA	1:B:148:GLU:OE2	2.45	0.64
1:B:257:TYR:HE1	1:B:328:ARG:NH1	1.94	0.64
1:B:336:ILE:HD13	1:B:371:LEU:HB2	1.79	0.64
1:B:402:ALA:HB2	1:B:429:LEU:HD22	1.78	0.64
1:B:528:ILE:HG13	1:B:529:PRO:HD2	1.78	0.63
1:A:520:LEU:HD22	1:B:165:HIS:NE2	2.11	0.63
1:A:126:ASP:OD1	1:A:162:ARG:HD3	1.97	0.63
1:B:457:ARG:HD3	1:B:457:ARG:N	2.14	0.63
1:B:23:ARG:C	1:B:23:ARG:HE	2.01	0.63
1:B:397:LEU:CD2	1:B:423:VAL:HG12	2.29	0.63
1:A:387:HIS:O	1:B:234:SER:CB	2.46	0.63
1:B:26:GLU:O	1:B:30:HIS:HD2	1.81	0.63
1:A:181:ALA:HB2	1:A:204:PHE:CE1	2.33	0.62
1:B:339:ASN:OD1	1:B:424:MET:HE2	1.99	0.62
1:B:86:GLY:O	1:B:117:TYR:CE2	2.50	0.62
1:A:403:GLU:HA	1:A:520:LEU:HD11	1.81	0.62
1:B:147:GLN:H	1:B:147:GLN:NE2	1.96	0.62
1:B:170:ILE:HG22	1:B:261:ASN:CB	2.30	0.62
1:A:374:VAL:HB	1:A:412:ILE:HA	1.80	0.62
1:B:455:HIS:O	1:B:457:ARG:N	2.32	0.62
1:B:417:PHE:CE1	1:B:443:ALA:HB3	2.34	0.62
1:A:87:VAL:HG12	1:A:117:TYR:HD2	1.65	0.62
1:A:32:GLY:HA3	1:A:107:THR:HG22	1.80	0.62
1:A:169:VAL:HA	1:A:262:ASN:ND2	2.15	0.62
1:A:459:ILE:HD11	1:A:470:ARG:HB2	1.82	0.62
1:B:455:HIS:CD2	1:B:473:LEU:HG	2.33	0.62
1:A:125:MET:CE	1:A:163:ASN:ND2	2.63	0.62
1:B:401:TYR:CD2	1:B:423:VAL:O	2.52	0.62
1:A:397:LEU:HD23	1:A:423:VAL:HG12	1.73	0.62
1:A:376:VAL:O	1:A:376:VAL:HG13	1.99	0.62
1:B:97:ARG:HB3	1:B:98:PRO:HD2	1.82	0.61
1:A:405:THR:O	1:A:516:LYS:NZ	2.32	0.61
1:A:86:GLY:O	1:A:117:TYR:CD2	2.53	0.61
1:A:117:TYR:CD1	1:A:117:TYR:C	2.74	0.61
1:A:528:ILE:HG12	1:A:529:PRO:HD2	1.82	0.61

Continued on next page...

Continued from previous page...

Atom-1	Atom-2	Interatomic distance (Å)	Clash overlap (Å)
1:B:340:GLN:CD	1:B:342:MET:HG3	2.21	0.61
1:B:462:ALA:C	1:B:464:ASP:N	2.52	0.61
1:A:117:TYR:O	1:A:117:TYR:CG	2.53	0.61
1:A:147:GLN:HE21	1:A:147:GLN:N	1.94	0.61
1:A:451:VAL:HG21	1:A:474:ILE:CG1	2.26	0.61
1:B:112:ALA:HA	1:B:143:GLY:O	2.01	0.60
1:A:362:THR:CG2	1:A:366:PHE:HE2	2.13	0.60
1:B:113:LEU:CG	1:B:156:TYR:HE1	2.06	0.60
1:B:193:PHE:CD1	1:B:238:HIS:CD2	2.88	0.60
1:A:36:ALA:CB	1:A:107:THR:HG23	2.31	0.60
1:A:392:ARG:CG	1:A:393:ARG:HG3	2.26	0.60
1:B:102:PHE:CE1	1:B:137:GLY:HA3	2.36	0.60
1:B:113:LEU:HG	1:B:117:TYR:CE1	2.36	0.60
1:A:32:GLY:CA	1:A:107:THR:HG22	2.31	0.60
1:A:525:HIS:ND1	1:A:526:GLY:O	2.35	0.60
1:A:21:LEU:O	1:A:21:LEU:HG	2.01	0.60
1:A:221:PHE:HB2	2:A:5600:BTN:H81	1.84	0.60
1:B:344:PHE:O	1:B:345:ALA:HB3	2.01	0.60
1:A:478:GLU:CB	1:A:482:LEU:HD22	2.32	0.60
1:A:141:SER:O	1:A:179:PRO:HB2	2.00	0.60
1:B:343:GLN:O	1:B:344:PHE:HB2	2.02	0.60
1:B:472:ARG:HH21	1:B:473:LEU:HD11	1.67	0.60
1:B:106:PHE:HB2	1:B:140:ASP:CG	2.23	0.59
1:B:104:GLN:CG	1:B:117:TYR:OH	2.50	0.59
1:A:266:PRO:HB2	1:A:333:PRO:HG2	1.83	0.59
1:A:366:PHE:O	1:A:367:ASN:HB2	2.01	0.59
1:B:269:PHE:O	1:B:269:PHE:HD2	1.82	0.59
1:A:11:ILE:HG23	1:A:12:HIS:N	2.16	0.59
1:A:520:LEU:HD21	1:B:165:HIS:NE2	2.18	0.59
1:B:451:VAL:O	1:B:455:HIS:HB2	2.02	0.59
1:A:254:LEU:CD2	1:A:312:PHE:HE2	2.15	0.59
1:A:415:LYS:HE3	1:A:417:PHE:HE2	1.67	0.59
1:A:457:ARG:NH1	1:A:457:ARG:HG3	2.18	0.59
1:B:65:ASP:HB2	1:B:120:LYS:HE3	1.84	0.58
1:B:299:HIS:HE1	1:B:313:GLU:OE2	1.86	0.58
1:B:358:ARG:HG2	4:B:567:HOH:O	2.02	0.58
1:A:169:VAL:HG12	1:A:170:ILE:HG23	1.86	0.58
1:A:215:THR:O	1:A:215:THR:CG2	2.51	0.58
1:B:65:ASP:OD2	1:B:123:LYS:HD2	2.03	0.58
1:B:87:VAL:CG1	1:B:117:TYR:CD2	2.86	0.58
1:A:211:ILE:HD12	1:A:211:ILE:O	2.02	0.58

Continued on next page...

Continued from previous page...

Atom-1	Atom-2	Interatomic distance (Å)	Clash overlap (Å)
1:A:386:GLU:HG3	1:A:386:GLU:O	2.02	0.58
1:A:477:TYR:CD1	1:A:482:LEU:HD11	2.37	0.58
1:B:200:THR:CG2	4:B:631:HOH:O	2.51	0.58
1:B:341:PRO:HB3	1:B:414:ARG:NH2	2.19	0.58
1:A:405:THR:HG22	1:A:518:GLU:O	2.03	0.57
1:A:457:ARG:HH11	1:A:457:ARG:HG3	1.69	0.57
1:A:86:GLY:C	1:A:117:TYR:CD2	2.78	0.57
1:A:181:ALA:HB1	1:A:204:PHE:CE1	2.38	0.57
1:B:126:ASP:OD1	1:B:162:ARG:HD3	2.04	0.57
1:A:10:ASP:C	1:A:16:GLY:HA3	2.25	0.57
1:B:173:ILE:HD12	1:B:255:LEU:HD21	1.87	0.57
1:B:124:VAL:HG12	1:B:125:MET:N	2.18	0.57
1:B:10:ASP:OD1	1:B:13:THR:HG23	2.05	0.57
1:A:503:ARG:O	1:A:503:ARG:HG2	2.05	0.57
1:B:478:GLU:O	1:B:482:LEU:HB2	2.05	0.57
1:B:113:LEU:HB3	1:B:156:TYR:CE1	2.40	0.57
1:B:214:VAL:HG12	1:B:215:THR:HG22	1.86	0.57
1:B:308:ASP:O	1:B:309:ALA:C	2.43	0.57
1:A:100:ALA:HB1	1:A:124:VAL:HG12	1.86	0.56
1:B:47:THR:OG1	1:B:50:GLU:HG3	2.04	0.56
1:B:113:LEU:CB	1:B:156:TYR:CE1	2.88	0.56
1:A:303:GLU:O	1:A:309:ALA:HA	2.04	0.56
1:A:315:GLN:HB2	1:A:355:LYS:HE3	1.88	0.56
1:A:477:TYR:O	1:A:482:LEU:CD1	2.53	0.56
1:A:405:THR:O	1:A:516:LYS:HE2	2.04	0.56
1:B:147:GLN:H	1:B:147:GLN:HE21	1.54	0.56
1:A:125:MET:HE1	1:A:163:ASN:ND2	2.20	0.56
1:B:98:PRO:C	1:B:99:VAL:HG23	2.24	0.56
1:A:462:ALA:C	1:A:464:ASP:N	2.58	0.56
1:A:149:GLY:C	1:B:444:VAL:HG23	2.25	0.56
1:A:503:ARG:O	1:A:507:VAL:CG2	2.52	0.56
1:A:390:ILE:HG23	1:A:391:ILE:N	2.21	0.56
1:A:433:LEU:HA	1:A:494:ASP:OD1	2.06	0.56
1:A:475:GLN:CD	1:A:475:GLN:O	2.45	0.56
1:B:163:ASN:HB3	1:B:190:ILE:CG2	2.34	0.55
1:A:477:TYR:O	1:A:482:LEU:HD13	2.07	0.55
1:A:340:GLN:CD	1:A:342:MET:HG3	2.26	0.55
1:A:462:ALA:C	1:A:464:ASP:H	2.10	0.55
1:B:462:ALA:C	1:B:464:ASP:H	2.09	0.55
1:B:271:GLU:O	1:B:271:GLU:HG3	2.07	0.55
1:B:339:ASN:ND2	1:B:424:MET:CE	2.68	0.55

Continued on next page...

Continued from previous page...

Atom-1	Atom-2	Interatomic distance (Å)	Clash overlap (Å)
1:B:528:ILE:HG12	1:B:529:PRO:N	2.21	0.55
1:B:37:VAL:HG12	1:B:37:VAL:O	2.06	0.55
1:B:193:PHE:CD1	1:B:238:HIS:NE2	2.75	0.55
1:B:308:ASP:O	1:B:310:GLU:N	2.39	0.55
1:A:176:VAL:HB	1:A:196:MET:HG2	1.89	0.55
1:A:211:ILE:HD12	1:A:215:THR:HG22	1.88	0.55
1:A:464:ASP:O	1:A:465:ASP:HB2	2.05	0.55
1:A:390:ILE:HG13	1:B:186:TYR:OH	2.07	0.55
1:B:392:ARG:HG3	1:B:393:ARG:CG	2.26	0.55
1:B:417:PHE:CD1	1:B:443:ALA:HB3	2.42	0.55
1:A:54:LEU:HD21	1:A:245:LYS:HD2	1.89	0.55
1:A:113:LEU:HD23	1:A:156:TYR:CD2	2.43	0.55
1:B:13:THR:O	1:B:16:GLY:N	2.33	0.55
1:B:102:PHE:CE1	1:B:137:GLY:CA	2.90	0.55
1:B:503:ARG:O	1:B:507:VAL:HG23	2.06	0.55
1:B:24:ARG:O	1:B:67:PHE:HE1	1.90	0.54
1:B:158:GLU:CD	1:B:161:ARG:HH12	2.11	0.54
1:B:180:CYS:O	1:B:185:VAL:HG12	2.06	0.54
1:A:344:PHE:O	1:A:345:ALA:CB	2.54	0.54
1:A:350:ILE:O	1:A:354:GLU:HG3	2.07	0.54
1:A:70:HIS:HD2	1:A:72:SER:N	2.03	0.54
1:A:87:VAL:CB	1:A:117:TYR:HD2	2.17	0.54
1:B:61:PHE:HE2	1:B:63:GLU:HB2	1.70	0.54
1:B:501:ASP:O	1:B:505:HIS:HD2	1.89	0.54
1:A:379:PHE:HZ	1:A:423:VAL:HG21	1.72	0.54
1:A:409:ILE:CD1	1:A:510:LEU:HG	2.37	0.54
1:B:219:VAL:HG22	1:B:220:GLY:N	2.22	0.54
1:A:458:THR:O	1:A:458:THR:CG2	2.55	0.54
1:B:478:GLU:HA	1:B:482:LEU:HD13	1.88	0.54
1:A:458:THR:O	1:A:458:THR:HG22	2.08	0.54
1:A:520:LEU:HD22	1:B:165:HIS:CE1	2.42	0.54
1:B:467:GLU:OE1	1:B:467:GLU:N	2.30	0.54
1:A:52:ILE:HD11	1:A:88:VAL:HB	1.89	0.54
1:A:69:ARG:HD2	1:A:83:TYR:CE2	2.43	0.54
1:A:501:ASP:OD1	1:A:504:ARG:HB3	2.08	0.54
1:B:254:LEU:CD1	1:B:312:PHE:HE2	2.21	0.54
1:B:298:MET:O	1:B:302:ILE:HD12	2.08	0.54
1:A:219:VAL:HG22	1:A:223:GLU:HG2	1.90	0.53
1:A:160:PHE:CE1	1:A:187:SER:CB	2.84	0.53
1:A:181:ALA:HB2	1:A:204:PHE:CZ	2.43	0.53
1:B:94:VAL:O	1:B:95:ASP:HB2	2.09	0.53

Continued on next page...

Continued from previous page...

Atom-1	Atom-2	Interatomic distance (Å)	Clash overlap (Å)
1:B:158:GLU:HB3	1:B:162:ARG:HH12	1.73	0.53
1:B:403:GLU:HA	1:B:520:LEU:HD11	1.90	0.53
1:B:462:ALA:O	1:B:464:ASP:N	2.41	0.53
1:A:528:ILE:HG12	1:A:529:PRO:CD	2.38	0.53
1:A:113:LEU:HD13	1:A:117:TYR:CE1	2.43	0.53
1:A:387:HIS:O	1:A:388:ASP:C	2.45	0.53
1:A:102:PHE:CZ	1:A:137:GLY:HA3	2.44	0.53
1:A:219:VAL:CG2	1:A:223:GLU:HG2	2.38	0.53
1:A:379:PHE:CE1	1:A:420:ALA:HB2	2.43	0.53
1:A:528:ILE:CG1	1:A:529:PRO:HD2	2.38	0.53
1:A:178:GLY:O	1:A:201:SER:HA	2.09	0.53
1:A:254:LEU:HD23	1:A:312:PHE:CE2	2.42	0.53
1:B:87:VAL:CB	1:B:117:TYR:CE2	2.85	0.53
1:B:91:TYR:CD1	1:B:91:TYR:C	2.81	0.53
1:A:478:GLU:HG2	1:A:482:LEU:CD2	2.39	0.53
1:B:445:MET:HE3	1:B:449:GLY:CA	2.38	0.53
1:B:277:VAL:O	1:B:277:VAL:CG2	2.57	0.53
1:A:99:VAL:CG2	1:A:134:PRO:HB2	2.32	0.52
1:B:124:VAL:CG1	1:B:125:MET:N	2.71	0.52
1:B:433:LEU:HA	1:B:494:ASP:OD1	2.10	0.52
1:B:445:MET:CE	1:B:449:GLY:O	2.57	0.52
1:A:230:HIS:CE1	1:B:391:ILE:HD12	2.44	0.52
1:A:447:ALA:CB	1:A:478:GLU:HG2	2.40	0.52
1:A:63:GLU:HG2	1:A:66:GLU:HB2	1.91	0.52
1:B:33:SER:O	1:B:36:ALA:N	2.41	0.52
1:A:165:HIS:NE2	1:B:520:LEU:CD2	2.72	0.52
1:A:170:ILE:HG22	1:A:261:ASN:HB3	1.92	0.52
1:A:362:THR:HG22	1:A:366:PHE:CE2	2.45	0.52
1:B:528:ILE:CG1	1:B:529:PRO:CD	2.79	0.52
1:A:154:GLY:CA	1:B:428:HIS:CE1	2.91	0.52
1:A:188:PRO:O	1:A:191:THR:OG1	2.26	0.52
1:A:456:ARG:CZ	1:A:457:ARG:NH2	2.69	0.52
1:A:94:VAL:O	1:A:95:ASP:HB2	2.10	0.52
1:B:69:ARG:NH1	1:B:83:TYR:OH	2.43	0.52
1:B:180:CYS:O	1:B:185:VAL:CG1	2.57	0.52
1:A:234:SER:HA	1:B:387:HIS:O	2.10	0.52
1:A:482:LEU:CD1	1:A:482:LEU:N	2.73	0.52
1:A:275:LEU:CD2	1:A:507:VAL:HG21	2.40	0.51
1:A:438:PRO:HD3	1:A:497:ILE:O	2.10	0.51
1:B:11:ILE:CG2	1:B:12:HIS:N	2.72	0.51
1:A:125:MET:HE3	1:A:163:ASN:ND2	2.26	0.51

Continued on next page...

Continued from previous page...

Atom-1	Atom-2	Interatomic distance (Å)	Clash overlap (Å)
1:A:145:ARG:CD	1:A:148:GLU:OE2	2.56	0.51
1:B:111:GLY:O	1:B:141:SER:CB	2.59	0.51
1:B:314:THR:O	1:B:315:GLN:C	2.49	0.51
1:B:324:THR:HA	1:B:336:ILE:O	2.10	0.51
1:A:113:LEU:CD1	1:A:117:TYR:HD1	2.10	0.51
1:A:340:GLN:OE1	1:A:342:MET:HG3	2.11	0.51
1:A:381:PRO:HG2	1:B:214:VAL:HG11	1.92	0.51
1:B:326:PHE:CZ	1:B:359:PHE:CE1	2.98	0.51
1:A:70:HIS:HA	1:A:116:VAL:HG21	1.92	0.51
1:B:457:ARG:CG	1:B:457:ARG:NH1	2.38	0.51
1:A:134:PRO:HG3	1:A:171:PRO:HG2	1.91	0.51
1:B:160:PHE:CE1	1:B:187:SER:HB2	2.44	0.51
1:A:380:LEU:O	1:A:380:LEU:CD1	2.59	0.51
1:A:451:VAL:HG11	1:A:474:ILE:CA	2.37	0.50
1:A:455:HIS:O	1:A:459:ILE:CG2	2.58	0.50
1:B:401:TYR:CE2	1:B:423:VAL:O	2.64	0.50
1:B:40:GLN:HE22	1:B:45:LYS:NZ	2.10	0.50
1:A:299:HIS:O	1:A:303:GLU:HG3	2.11	0.50
1:A:444:VAL:HA	1:B:153:LEU:HD11	1.93	0.50
1:B:367:ASN:HA	1:B:406:VAL:HG11	1.92	0.50
1:A:211:ILE:HD12	1:A:215:THR:CG2	2.42	0.50
1:A:380:LEU:HD11	4:A:623:HOH:O	2.10	0.50
1:B:146:ILE:O	1:B:147:GLN:C	2.50	0.50
1:A:69:ARG:NH1	1:A:83:TYR:CZ	2.79	0.50
1:A:234:SER:HB2	1:A:236:VAL:HG23	1.94	0.50
1:B:91:TYR:CD1	1:B:91:TYR:O	2.65	0.50
1:A:176:VAL:HB	1:A:196:MET:CG	2.41	0.50
1:A:467:GLU:N	1:A:467:GLU:OE2	2.45	0.50
1:B:208:PRO:HD2	1:B:221:PHE:CZ	2.47	0.50
1:A:160:PHE:HE1	1:A:187:SER:CB	2.08	0.50
1:A:478:GLU:HA	1:A:482:LEU:CG	2.40	0.50
1:B:305:VAL:HG23	1:B:306:LEU:N	2.26	0.50
1:A:232:SER:O	1:A:318:PHE:HD1	1.95	0.49
1:A:475:GLN:O	1:A:475:GLN:OE1	2.30	0.49
1:B:111:GLY:O	1:B:141:SER:OG	2.23	0.49
1:A:406:VAL:O	1:A:408:LEU:HG	2.13	0.49
1:B:25:ILE:O	1:B:25:ILE:HG13	2.09	0.49
1:A:207:GLY:O	1:A:211:ILE:CG2	2.60	0.49
1:A:158:GLU:HB3	1:A:162:ARG:HH12	1.76	0.49
1:A:250:TYR:CE1	1:A:312:PHE:CZ	3.00	0.49
1:A:434:ASN:HB3	4:A:656:HOH:O	2.12	0.49

Continued on next page...

Continued from previous page...

Atom-1	Atom-2	Interatomic distance (Å)	Clash overlap (Å)
1:B:10:ASP:CG	1:B:11:ILE:N	2.64	0.49
1:B:132:GLY:C	1:B:261:ASN:HD22	2.15	0.49
1:B:300:SER:O	1:B:304:HIS:ND1	2.40	0.49
1:A:80:ASN:N	1:A:80:ASN:ND2	2.61	0.49
1:A:121:ILE:O	1:A:125:MET:HG3	2.12	0.49
1:A:387:HIS:O	1:B:234:SER:HB2	2.12	0.49
1:A:483:ASN:CB	1:A:484:PRO:HD2	2.31	0.49
1:B:232:SER:O	1:B:318:PHE:HD1	1.95	0.49
1:B:435:LEU:HD13	1:B:435:LEU:N	2.27	0.49
1:B:445:MET:CE	1:B:449:GLY:CA	2.90	0.49
1:B:465:ASP:O	1:B:469:THR:HG23	2.12	0.49
1:A:113:LEU:CD1	1:A:117:TYR:CE1	2.95	0.49
1:A:175:LEU:C	1:A:175:LEU:CD2	2.81	0.49
1:A:324:THR:HA	1:A:336:ILE:O	2.13	0.49
1:B:226:GLY:O	1:B:229:THR:HB	2.13	0.49
1:B:329:VAL:O	1:B:330:GLU:HB2	2.12	0.49
1:A:265:GLU:CG	1:A:266:PRO:CD	2.90	0.49
1:B:36:ALA:HA	1:B:39:LYS:HG3	1.94	0.49
1:B:147:GLN:HE21	1:B:147:GLN:N	2.11	0.49
1:A:11:ILE:CG2	1:A:12:HIS:N	2.75	0.49
1:B:445:MET:CE	1:B:449:GLY:HA3	2.41	0.49
1:A:121:ILE:O	1:A:121:ILE:CG2	2.61	0.48
1:A:230:HIS:HE1	1:B:391:ILE:HD12	1.77	0.48
1:A:517:ARG:HD2	4:A:664:HOH:O	2.12	0.48
1:B:231:ASN:HD21	1:B:238:HIS:C	2.16	0.48
1:B:390:ILE:HG23	1:B:391:ILE:N	2.28	0.48
1:A:340:GLN:HG3	1:A:340:GLN:O	2.12	0.48
1:B:113:LEU:HA	1:B:117:TYR:CD1	2.48	0.48
1:B:483:ASN:HD22	1:B:483:ASN:C	2.17	0.48
1:A:349:ASP:O	1:A:350:ILE:C	2.52	0.48
1:B:473:LEU:HA	1:B:476:GLU:HG3	1.95	0.48
1:A:435:LEU:N	1:A:435:LEU:HD13	2.27	0.48
1:B:268:ALA:CB	1:B:332:ARG:HG3	2.43	0.48
1:B:437:TRP:NE1	1:B:502:THR:OG1	2.46	0.48
1:A:391:ILE:HA	1:B:186:TYR:CE1	2.48	0.48
1:B:113:LEU:HD13	1:B:156:TYR:CD1	2.41	0.48
1:B:208:PRO:CD	1:B:221:PHE:CE1	2.97	0.48
1:B:280:GLU:O	1:B:283:GLU:HB2	2.13	0.48
1:A:170:ILE:HG22	1:A:261:ASN:CB	2.43	0.48
1:A:392:ARG:HG3	1:A:393:ARG:N	2.28	0.48
1:A:409:ILE:HD11	1:A:510:LEU:HG	1.95	0.48

Continued on next page...

Continued from previous page...

Atom-1	Atom-2	Interatomic distance (Å)	Clash overlap (Å)
1:B:37:VAL:O	1:B:37:VAL:CG1	2.61	0.48
1:A:193:PHE:HA	1:A:238:HIS:ND1	2.28	0.48
1:A:288:VAL:HG11	1:A:439:THR:HG21	1.95	0.48
1:A:459:ILE:HD11	1:A:466:ALA:O	2.14	0.48
1:B:61:PHE:CE2	1:B:63:GLU:HB2	2.48	0.48
1:B:253:GLN:O	1:B:256:SER:OG	2.22	0.48
1:B:455:HIS:CE1	1:B:473:LEU:HG	2.50	0.47
1:A:85:ASP:O	1:A:117:TYR:CB	2.57	0.47
1:A:147:GLN:HG3	1:B:454:LEU:CD2	2.43	0.47
1:A:159:ILE:HG22	1:A:163:ASN:OD1	2.14	0.47
1:B:23:ARG:NH2	1:B:24:ARG:HG3	2.29	0.47
1:B:187:SER:HB3	1:B:188:PRO:CD	2.35	0.47
1:B:188:PRO:O	1:B:191:THR:OG1	2.31	0.47
1:B:266:PRO:CG	1:B:368:VAL:HG22	2.44	0.47
1:B:320:PRO:HB2	1:B:343:GLN:HG3	1.96	0.47
1:A:134:PRO:HG3	1:A:171:PRO:CG	2.45	0.47
1:A:56:LEU:HD11	1:A:101:VAL:HG11	1.96	0.47
1:B:132:GLY:HA3	1:B:261:ASN:ND2	2.29	0.47
1:B:173:ILE:HD12	1:B:255:LEU:CD2	2.43	0.47
1:A:113:LEU:HD13	1:A:117:TYR:HE1	1.78	0.47
1:A:170:ILE:HG13	1:A:170:ILE:O	2.15	0.47
1:A:306:LEU:HD21	1:A:336:ILE:HD11	1.96	0.47
1:A:389:GLY:O	1:A:393:ARG:HG3	2.13	0.47
1:A:451:VAL:HG23	1:A:452:ASN:N	2.29	0.47
1:A:478:GLU:HG2	1:A:482:LEU:HD22	1.97	0.47
1:A:483:ASN:C	1:A:483:ASN:HD22	2.17	0.47
1:B:318:PHE:O	1:B:355:LYS:HD2	2.15	0.47
1:B:472:ARG:HE	1:B:473:LEU:HD13	1.79	0.47
1:B:287:ILE:HG12	1:B:296:TYR:CD2	2.50	0.47
1:B:474:ILE:O	1:B:478:GLU:OE1	2.32	0.47
1:A:48:ALA:O	1:A:52:ILE:HG13	2.14	0.47
1:B:23:ARG:NE	1:B:23:ARG:C	2.68	0.47
1:B:322:ILE:CG2	1:B:355:LYS:HD3	2.45	0.47
1:A:13:THR:O	1:A:16:GLY:N	2.48	0.46
1:A:193:PHE:CE2	1:A:362:THR:HG21	2.50	0.46
1:B:170:ILE:O	1:B:170:ILE:HG13	2.15	0.46
1:A:10:ASP:N	1:A:13:THR:HG23	2.29	0.46
1:A:186:TYR:OH	1:B:390:ILE:HG13	2.14	0.46
1:A:227:ALA:HB3	4:A:571:HOH:O	2.14	0.46
1:A:350:ILE:HG13	1:A:385:GLN:NE2	2.30	0.46
1:A:390:ILE:CG1	1:B:186:TYR:OH	2.63	0.46

Continued on next page...

Continued from previous page...

Atom-1	Atom-2	Interatomic distance (Å)	Clash overlap (Å)
1:A:498:MET:O	1:A:499:PRO:C	2.54	0.46
1:B:25:ILE:CD1	4:B:644:HOH:O	2.45	0.46
1:B:401:TYR:CE2	1:B:425:GLY:N	2.83	0.46
1:A:503:ARG:O	1:A:503:ARG:CG	2.63	0.46
1:B:204:PHE:CE1	1:B:207:GLY:HA2	2.51	0.46
1:B:221:PHE:CB	2:B:5601:BTN:H81	2.45	0.46
1:B:284:LEU:HD21	1:B:304:HIS:CG	2.51	0.46
1:A:284:LEU:HG	1:A:304:HIS:CD2	2.50	0.46
1:A:386:GLU:OE2	1:B:204:PHE:CA	2.63	0.46
1:A:389:GLY:O	1:A:393:ARG:CG	2.64	0.46
1:B:221:PHE:HB2	2:B:5601:BTN:H81	1.97	0.46
1:B:254:LEU:HD12	1:B:254:LEU:HA	1.75	0.46
1:B:395:ALA:O	1:B:398:ILE:HG23	2.15	0.46
1:A:87:VAL:N	1:A:117:TYR:HD2	2.13	0.46
1:A:302:ILE:O	1:A:305:VAL:CG2	2.61	0.46
1:B:81:ARG:N	1:B:82:PRO:HD3	2.29	0.46
1:B:376:VAL:O	1:B:376:VAL:HG13	2.15	0.46
1:A:102:PHE:CE1	1:A:137:GLY:HA3	2.51	0.46
1:B:70:HIS:CD2	1:B:70:HIS:C	2.88	0.46
1:B:193:PHE:HA	1:B:238:HIS:ND1	2.26	0.46
1:B:457:ARG:O	1:B:460:ALA:N	2.48	0.46
1:A:128:ALA:HB1	1:A:133:CYS:O	2.16	0.46
1:A:469:THR:O	1:A:472:ARG:CB	2.61	0.46
1:A:522:PRO:O	1:A:523:LYS:HB3	2.16	0.46
1:A:398:ILE:HD11	1:B:160:PHE:HB3	1.93	0.46
1:A:520:LEU:HD22	1:B:165:HIS:CG	2.50	0.46
1:B:128:ALA:CB	1:B:135:VAL:CG2	2.93	0.46
1:A:454:LEU:HD13	1:B:75:PHE:CZ	2.51	0.46
1:B:116:VAL:O	1:B:120:LYS:N	2.46	0.46
1:A:198:ASP:CG	1:A:199:GLN:HG2	2.36	0.45
1:A:361:ARG:NH2	4:A:532:HOH:O	2.38	0.45
1:A:498:MET:O	1:A:500:SER:N	2.49	0.45
1:B:187:SER:H	1:B:188:PRO:HD2	1.81	0.45
1:B:198:ASP:OD1	1:B:199:GLN:N	2.49	0.45
1:B:456:ARG:O	1:B:459:ILE:HG22	2.14	0.45
1:A:183:GLY:O	1:A:184:ALA:C	2.54	0.45
1:A:284:LEU:HD21	1:A:304:HIS:CG	2.51	0.45
1:A:528:ILE:HG12	1:A:529:PRO:N	2.31	0.45
1:B:266:PRO:HG3	1:B:368:VAL:HG22	1.99	0.45
1:B:69:ARG:NH1	1:B:83:TYR:CZ	2.84	0.45
1:B:341:PRO:HB3	1:B:414:ARG:HH22	1.81	0.45

Continued on next page...

Continued from previous page...

Atom-1	Atom-2	Interatomic distance (Å)	Clash overlap (Å)
1:A:146:ILE:CB	1:B:454:LEU:HD11	2.44	0.45
1:A:165:HIS:CD2	1:B:520:LEU:CD2	2.96	0.45
1:A:196:MET:HE3	1:A:203:MET:HG3	1.99	0.45
1:A:256:SER:O	1:A:267:PRO:HG2	2.17	0.45
1:A:493:VAL:HG23	1:A:493:VAL:O	2.17	0.45
1:B:467:GLU:H	1:B:467:GLU:CD	2.17	0.45
1:A:26:GLU:O	1:A:30:HIS:HD2	1.99	0.45
1:A:113:LEU:CD2	1:A:156:TYR:CD1	2.99	0.45
1:A:322:ILE:HG13	1:A:338:ALA:O	2.16	0.45
1:B:87:VAL:HB	1:B:117:TYR:HE2	1.74	0.45
1:B:401:TYR:CZ	1:B:425:GLY:N	2.85	0.45
1:A:102:PHE:CZ	1:A:137:GLY:CA	2.99	0.45
1:A:486:THR:HB	4:A:565:HOH:O	2.16	0.45
1:B:195:VAL:CG2	1:B:247:ALA:HB1	2.47	0.45
1:B:456:ARG:HE	1:B:456:ARG:HB2	1.42	0.45
1:A:91:TYR:CD1	1:A:91:TYR:C	2.89	0.45
1:B:56:LEU:CD1	1:B:61:PHE:HD1	2.30	0.45
1:A:99:VAL:HG22	1:A:134:PRO:CB	2.32	0.45
1:B:13:THR:O	1:B:14:THR:C	2.55	0.45
1:B:72:SER:O	1:B:78:ASP:HB3	2.16	0.45
1:B:158:GLU:O	1:B:162:ARG:NH1	2.47	0.45
1:B:474:ILE:O	1:B:478:GLU:HG3	2.17	0.45
1:A:65:ASP:HB2	1:A:120:LYS:HE3	1.99	0.45
1:A:327:GLY:O	1:A:328:ARG:HG2	2.17	0.45
1:A:436:ALA:O	1:A:496:VAL:HA	2.16	0.45
1:B:128:ALA:HB2	1:B:135:VAL:CG2	2.46	0.45
1:B:483:ASN:HB2	1:B:484:PRO:HD2	1.98	0.45
1:B:349:ASP:O	1:B:350:ILE:C	2.55	0.45
1:B:456:ARG:C	1:B:459:ILE:HG22	2.37	0.45
1:A:60:SER:O	1:A:61:PHE:C	2.55	0.44
1:A:262:ASN:OD1	1:A:262:ASN:O	2.36	0.44
1:A:389:GLY:O	1:A:393:ARG:HD3	2.16	0.44
1:B:321:ASN:OD1	1:B:321:ASN:N	2.47	0.44
1:B:399:PHE:O	1:B:399:PHE:CD2	2.69	0.44
1:A:156:TYR:HB3	1:A:160:PHE:CE2	2.52	0.44
1:B:198:ASP:CG	1:B:199:GLN:HG2	2.35	0.44
1:A:161:ARG:NH2	1:A:162:ARG:NH2	2.65	0.44
1:A:478:GLU:HB3	1:A:482:LEU:HD22	1.98	0.44
1:B:40:GLN:HE22	1:B:45:LYS:HZ1	1.63	0.44
1:B:363:CYS:HB3	1:B:368:VAL:HB	1.98	0.44
1:A:86:GLY:O	1:A:117:TYR:HE2	1.96	0.44

Continued on next page...

Continued from previous page...

Atom-1	Atom-2	Interatomic distance (Å)	Clash overlap (Å)
1:A:113:LEU:O	1:A:145:ARG:CB	2.57	0.44
1:A:329:VAL:O	1:A:330:GLU:CB	2.64	0.44
1:B:187:SER:N	1:B:188:PRO:CD	2.80	0.44
1:A:288:VAL:HG22	1:A:296:TYR:CZ	2.53	0.44
1:A:196:MET:CE	1:A:230:HIS:HD2	2.31	0.44
1:B:70:HIS:HD2	1:B:72:SER:N	2.16	0.44
1:B:427:LYS:HB2	1:B:427:LYS:HE2	1.73	0.44
1:A:215:THR:CG2	1:A:217:GLU:HB3	2.47	0.44
1:A:376:VAL:O	1:A:376:VAL:CG1	2.64	0.44
1:A:380:LEU:C	1:A:380:LEU:CD1	2.77	0.44
1:A:433:LEU:HD12	1:A:494:ASP:OD1	2.18	0.44
1:A:483:ASN:HB2	1:A:484:PRO:CD	2.35	0.44
1:B:198:ASP:HA	1:B:227:ALA:HB3	2.00	0.44
1:B:493:VAL:HG23	1:B:493:VAL:O	2.16	0.44
1:A:158:GLU:CD	1:A:161:ARG:HH12	2.21	0.44
1:A:182:GLY:O	1:A:185:VAL:HG22	2.18	0.44
1:A:448:GLN:O	1:A:452:ASN:OD1	2.36	0.44
1:B:466:ALA:O	1:B:467:GLU:C	2.56	0.44
1:B:469:THR:O	1:B:473:LEU:HD22	2.18	0.44
1:B:473:LEU:HA	1:B:473:LEU:HD12	1.80	0.44
1:A:21:LEU:O	1:A:21:LEU:CG	2.65	0.43
1:A:102:PHE:CE1	1:A:137:GLY:CA	3.01	0.43
1:A:456:ARG:HD2	1:A:457:ARG:CZ	2.48	0.43
1:A:478:GLU:CG	1:A:482:LEU:HD22	2.47	0.43
1:B:130:LYS:HE3	1:B:130:LYS:HB2	1.67	0.43
1:B:204:PHE:CZ	1:B:221:PHE:HE1	2.36	0.43
1:B:208:PRO:HD2	1:B:221:PHE:CE1	2.52	0.43
1:B:364:ASP:CG	1:B:404:ALA:HA	2.38	0.43
1:A:212:LYS:CE	1:A:218:ASP:OD1	2.67	0.43
1:B:182:GLY:O	1:B:185:VAL:HG22	2.18	0.43
1:B:326:PHE:CE2	1:B:359:PHE:HE1	2.35	0.43
1:B:434:ASN:C	1:B:435:LEU:HD13	2.38	0.43
1:A:395:ALA:C	1:A:398:ILE:HG23	2.33	0.43
1:A:475:GLN:O	1:A:475:GLN:CG	2.66	0.43
1:B:344:PHE:O	1:B:345:ALA:CB	2.66	0.43
1:B:455:HIS:O	1:B:456:ARG:C	2.56	0.43
1:A:475:GLN:CD	1:A:475:GLN:C	2.77	0.43
1:B:284:LEU:HG	1:B:304:HIS:CD2	2.53	0.43
1:B:205:ILE:H	1:B:205:ILE:HG13	1.30	0.43
1:B:478:GLU:HG2	1:B:482:LEU:HD22	1.99	0.43
1:A:433:LEU:HA	1:A:433:LEU:HD12	1.80	0.43

Continued on next page...

Continued from previous page...

Atom-1	Atom-2	Interatomic distance (Å)	Clash overlap (Å)
1:A:478:GLU:HA	1:A:482:LEU:CD2	2.49	0.43
1:A:23:ARG:HG2	1:A:23:ARG:HH11	1.83	0.43
1:A:445:MET:SD	1:A:449:GLY:O	2.77	0.43
1:B:77:LEU:HD21	1:B:109:PHE:CZ	2.54	0.43
1:B:219:VAL:HG22	1:B:220:GLY:O	2.18	0.43
1:A:11:ILE:C	1:A:13:THR:H	2.21	0.43
1:A:160:PHE:HB3	1:B:398:ILE:CD1	2.43	0.43
1:A:212:LYS:O	1:A:216:GLY:N	2.46	0.43
1:A:250:TYR:CZ	1:A:312:PHE:CZ	3.07	0.43
1:B:200:THR:HG21	4:B:631:HOH:O	2.17	0.43
1:A:478:GLU:HA	1:A:482:LEU:HD22	1.99	0.43
1:B:364:ASP:OD1	1:B:405:THR:N	2.48	0.43
1:B:419:GLY:O	1:B:423:VAL:HG23	2.19	0.43
1:B:457:ARG:C	1:B:459:ILE:N	2.71	0.43
1:A:337:VAL:O	1:A:372:THR:HA	2.18	0.43
1:A:343:GLN:O	1:A:344:PHE:HB2	2.19	0.43
1:A:409:ILE:HD12	1:A:510:LEU:HG	2.00	0.43
1:A:504:ARG:CG	1:A:508:ARG:HD2	2.45	0.43
1:B:40:GLN:NE2	1:B:45:LYS:NZ	2.66	0.43
1:B:266:PRO:CD	1:B:367:ASN:O	2.67	0.43
1:B:472:ARG:O	1:B:476:GLU:HG3	2.19	0.43
1:A:10:ASP:O	1:A:10:ASP:CG	2.57	0.42
1:A:187:SER:CB	1:A:188:PRO:HD3	2.21	0.42
1:A:148:GLU:O	1:A:151:ALA:HB3	2.20	0.42
1:A:175:LEU:CD2	1:A:177:VAL:HG13	2.42	0.42
1:B:85:ASP:O	1:B:117:TYR:HD2	2.02	0.42
1:A:493:VAL:O	1:A:494:ASP:C	2.58	0.42
1:A:520:LEU:CD2	1:B:165:HIS:CD2	2.94	0.42
1:B:20:ASP:HB3	4:B:539:HOH:O	2.19	0.42
1:B:315:GLN:HB2	1:B:355:LYS:HE3	2.01	0.42
1:A:86:GLY:C	1:A:117:TYR:HD2	2.22	0.42
1:B:332:ARG:NH2	1:B:514:ARG:HH12	2.17	0.42
1:A:387:HIS:O	1:B:234:SER:HA	2.19	0.42
1:B:198:ASP:O	1:B:199:GLN:HB2	2.19	0.42
1:A:466:ALA:O	1:A:469:THR:OG1	2.33	0.42
1:B:169:VAL:HG12	1:B:170:ILE:HG23	2.02	0.42
1:B:399:PHE:CG	1:B:528:ILE:HG13	2.54	0.42
1:A:192:ASP:O	1:A:238:HIS:CE1	2.72	0.42
1:B:146:ILE:HG23	1:B:147:GLN:N	2.34	0.42
1:B:390:ILE:O	1:B:394:GLY:N	2.43	0.42
1:A:146:ILE:HG21	1:B:454:LEU:CD1	2.45	0.42

Continued on next page...

Continued from previous page...

Atom-1	Atom-2	Interatomic distance (Å)	Clash overlap (Å)
1:A:152:SER:O	1:A:156:TYR:CD2	2.72	0.42
1:A:262:ASN:OD1	1:A:262:ASN:C	2.58	0.42
1:A:87:VAL:HG21	1:A:121:ILE:HD11	2.01	0.42
1:A:459:ILE:HG13	1:A:459:ILE:O	2.20	0.42
1:A:483:ASN:HD22	1:A:483:ASN:N	2.18	0.42
1:B:234:SER:O	1:B:236:VAL:N	2.53	0.42
1:B:341:PRO:HG3	1:B:375:ASP:OD2	2.19	0.42
1:B:364:ASP:OD1	1:B:404:ALA:HA	2.19	0.42
1:B:521:PRO:HA	1:B:522:PRO:HD3	1.93	0.42
1:A:161:ARG:HB2	1:B:429:LEU:HD23	2.01	0.42
1:A:451:VAL:CG2	1:A:474:ILE:HG12	2.37	0.42
1:B:113:LEU:CG	1:B:117:TYR:CE1	3.02	0.42
1:A:279:ASP:O	1:A:283:GLU:HG3	2.20	0.41
1:B:22:ARG:HA	1:B:25:ILE:HG23	1.99	0.41
1:B:98:PRO:C	1:B:99:VAL:CG2	2.87	0.41
1:A:196:MET:SD	1:A:203:MET:CE	2.98	0.41
1:B:363:CYS:O	1:B:368:VAL:O	2.38	0.41
1:A:113:LEU:HD23	1:A:156:TYR:CE1	2.43	0.41
1:A:513:LEU:C	1:A:515:THR:H	2.23	0.41
1:B:128:ALA:HB1	1:B:170:ILE:HD12	2.03	0.41
1:A:40:GLN:HE22	1:A:45:LYS:NZ	2.18	0.41
1:A:387:HIS:O	1:A:389:GLY:N	2.54	0.41
1:B:339:ASN:OD1	1:B:424:MET:CE	2.68	0.41
1:B:523:LYS:HE2	1:B:523:LYS:HB3	1.87	0.41
1:B:457:ARG:C	1:B:459:ILE:H	2.22	0.41
1:B:435:LEU:N	1:B:435:LEU:CD1	2.83	0.41
1:A:358:ARG:CG	1:A:358:ARG:O	2.68	0.41
1:A:403:GLU:HA	1:A:520:LEU:CD1	2.49	0.41
1:B:133:CYS:HA	1:B:134:PRO:HD3	1.74	0.41
1:B:302:ILE:O	1:B:305:VAL:CG2	2.60	0.41
1:A:478:GLU:HG2	1:A:482:LEU:HD21	2.02	0.41
1:B:80:ASN:O	1:B:82:PRO:HD3	2.20	0.41
1:B:318:PHE:O	1:B:319:ALA:HB3	2.20	0.41
1:A:69:ARG:NH1	1:A:83:TYR:OH	2.54	0.41
1:A:134:PRO:CB	1:A:171:PRO:HG2	2.51	0.41
1:A:154:GLY:HA2	1:B:428:HIS:NE2	2.36	0.41
1:A:211:ILE:O	1:A:215:THR:HG22	2.20	0.41
1:A:248:VAL:HG12	1:A:252:LYS:HD2	2.02	0.41
1:A:256:SER:HA	4:A:666:HOH:O	2.19	0.41
1:A:325:GLY:O	1:A:359:PHE:HZ	2.04	0.41
1:A:380:LEU:HD13	1:A:381:PRO:O	2.21	0.41

Continued on next page...

Continued from previous page...

Atom-1	Atom-2	Interatomic distance (Å)	Clash overlap (Å)
1:A:513:LEU:C	1:A:515:THR:N	2.71	0.41
1:B:47:THR:O	1:B:51:ARG:HD2	2.20	0.41
1:B:100:ALA:O	1:B:135:VAL:HA	2.21	0.41
1:B:192:ASP:O	1:B:238:HIS:CE1	2.74	0.41
1:B:195:VAL:HG11	1:B:251:VAL:HG22	2.03	0.41
1:A:366:PHE:O	1:A:367:ASN:CB	2.65	0.41
1:A:414:ARG:O	1:A:441:GLN:N	2.43	0.41
1:B:102:PHE:CE1	1:B:137:GLY:HA2	2.55	0.41
1:B:183:GLY:O	1:B:184:ALA:C	2.60	0.41
1:B:231:ASN:ND2	1:B:238:HIS:C	2.74	0.41
1:B:417:PHE:CZ	1:B:441:GLN:HB2	2.56	0.41
1:B:437:TRP:HE1	1:B:502:THR:HG1	1.67	0.41
1:B:451:VAL:HB	1:B:455:HIS:CD2	2.45	0.41
1:A:406:VAL:HB	1:A:407:PRO:HD2	2.03	0.40
1:A:11:ILE:O	1:A:17:LYS:HG3	2.21	0.40
1:A:203:MET:O	1:A:225:GLY:HA3	2.21	0.40
1:A:284:LEU:CD2	1:A:304:HIS:CD2	3.05	0.40
1:A:512:GLN:O	1:A:513:LEU:C	2.58	0.40
1:B:166:ALA:O	1:B:169:VAL:N	2.47	0.40
1:A:377:PRO:HA	1:A:417:PHE:HD2	1.85	0.40
1:B:266:PRO:HD3	1:B:367:ASN:O	2.21	0.40
1:B:287:ILE:CG2	1:B:288:VAL:H	2.32	0.40
1:B:340:GLN:O	1:B:340:GLN:HG3	2.20	0.40
1:B:430:GLY:O	4:B:581:HOH:O	2.21	0.40
1:B:504:ARG:HH11	1:B:508:ARG:HH11	1.69	0.40
1:B:98:PRO:O	1:B:99:VAL:HG22	2.19	0.40
1:A:70:HIS:CE1	1:A:77:LEU:O	2.74	0.40
1:A:175:LEU:HD22	1:A:175:LEU:C	2.42	0.40
1:A:287:ILE:O	1:A:287:ILE:CG1	2.58	0.40
1:B:20:ASP:OD1	1:B:23:ARG:NH2	2.54	0.40
1:B:483:ASN:HD22	1:B:483:ASN:N	2.18	0.40

There are no symmetry-related clashes.

5.3 Torsion angles [i](#)

5.3.1 Protein backbone [i](#)

In the following table, the Percentiles column shows the percent Ramachandran outliers of the chain as a percentile score with respect to all X-ray entries followed by that with respect to entries of similar resolution.

The Analysed column shows the number of residues for which the backbone conformation was analysed, and the total number of residues.

Mol	Chain	Analysed	Favoured	Allowed	Outliers	Percentiles	
1	A	519/530 (98%)	459 (88%)	58 (11%)	2 (0%)	34	30
1	B	519/530 (98%)	458 (88%)	60 (12%)	1 (0%)	47	44
All	All	1038/1060 (98%)	917 (88%)	118 (11%)	3 (0%)	41	37

All (3) Ramachandran outliers are listed below:

Mol	Chain	Res	Type
1	A	463	GLY
1	A	514	ARG
1	B	98	PRO

5.3.2 Protein sidechains [i](#)

In the following table, the Percentiles column shows the percent sidechain outliers of the chain as a percentile score with respect to all X-ray entries followed by that with respect to entries of similar resolution.

The Analysed column shows the number of residues for which the sidechain conformation was analysed, and the total number of residues.

Mol	Chain	Analysed	Rotameric	Outliers	Percentiles	
1	A	412/421 (98%)	374 (91%)	38 (9%)	9	5
1	B	412/421 (98%)	375 (91%)	37 (9%)	9	6
All	All	824/842 (98%)	749 (91%)	75 (9%)	9	5

All (75) residues with a non-rotameric sidechain are listed below:

Mol	Chain	Res	Type
1	A	21	LEU
1	A	35	ARG
1	A	40	GLN
1	A	43	LYS
1	A	53	ASP
1	A	80	ASN
1	A	117	TYR
1	A	119	GLN
1	A	129	LEU
1	A	147	GLN

Continued on next page...

Continued from previous page...

Mol	Chain	Res	Type
1	A	175	LEU
1	A	205	ILE
1	A	209	ASP
1	A	211	ILE
1	A	213	THR
1	A	215	THR
1	A	219	VAL
1	A	223	GLU
1	A	232	SER
1	A	245	LYS
1	A	263	LEU
1	A	264	SER
1	A	271	GLU
1	A	275	LEU
1	A	287	ILE
1	A	291	SER
1	A	342	MET
1	A	398	ILE
1	A	433	LEU
1	A	435	LEU
1	A	444	VAL
1	A	457	ARG
1	A	461	ASP
1	A	475	GLN
1	A	483	ASN
1	A	500	SER
1	A	527	ASN
1	A	528	ILE
1	B	23	ARG
1	B	25	ILE
1	B	35	ARG
1	B	39	LYS
1	B	40	GLN
1	B	49	ARG
1	B	77	LEU
1	B	124	VAL
1	B	146	ILE
1	B	147	GLN
1	B	177	VAL
1	B	195	VAL
1	B	200	THR
1	B	205	ILE

Continued on next page...

Continued from previous page...

Mol	Chain	Res	Type
1	B	212	LYS
1	B	213	THR
1	B	218	ASP
1	B	232	SER
1	B	245	LYS
1	B	254	LEU
1	B	280	GLU
1	B	293	ASN
1	B	342	MET
1	B	349	ASP
1	B	358	ARG
1	B	387	HIS
1	B	398	ILE
1	B	435	LEU
1	B	451	VAL
1	B	456	ARG
1	B	457	ARG
1	B	458	THR
1	B	461	ASP
1	B	472	ARG
1	B	473	LEU
1	B	483	ASN
1	B	508	ARG

Sometimes sidechains can be flipped to improve hydrogen bonding and reduce clashes. All (29) such sidechains are listed below:

Mol	Chain	Res	Type
1	A	30	HIS
1	A	40	GLN
1	A	70	HIS
1	A	74	ASN
1	A	80	ASN
1	A	119	GLN
1	A	147	GLN
1	A	230	HIS
1	A	231	ASN
1	A	299	HIS
1	A	385	GLN
1	A	448	GLN
1	A	455	HIS
1	A	483	ASN
1	A	505	HIS

Continued on next page...

Continued from previous page...

Mol	Chain	Res	Type
1	A	512	GLN
1	A	527	ASN
1	B	30	HIS
1	B	40	GLN
1	B	70	HIS
1	B	74	ASN
1	B	147	GLN
1	B	231	ASN
1	B	293	ASN
1	B	299	HIS
1	B	455	HIS
1	B	483	ASN
1	B	505	HIS
1	B	527	ASN

5.3.3 RNA [i](#)

There are no RNA molecules in this entry.

5.4 Non-standard residues in protein, DNA, RNA chains [i](#)

There are no non-standard protein/DNA/RNA residues in this entry.

5.5 Carbohydrates [i](#)

There are no monosaccharides in this entry.

5.6 Ligand geometry [i](#)

4 ligands are modelled in this entry.

In the following table, the Counts columns list the number of bonds (or angles) for which Mogul statistics could be retrieved, the number of bonds (or angles) that are observed in the model and the number of bonds (or angles) that are defined in the Chemical Component Dictionary. The Link column lists molecule types, if any, to which the group is linked. The Z score for a bond length (or angle) is the number of standard deviations the observed value is removed from the expected value. A bond length (or angle) with $|Z| > 2$ is considered an outlier worth inspection. RMSZ is the root-mean-square of all Z scores of the bond lengths (or angles).

Mol	Type	Chain	Res	Link	Bond lengths			Bond angles		
					Counts	RMSZ	# Z > 2	Counts	RMSZ	# Z > 2
2	BTN	B	5601	-	14,17,17	3.82	7 (50%)	19,23,23	3.86	8 (42%)
3	SO4	A	531	-	4,4,4	0.25	0	6,6,6	0.14	0
3	SO4	B	531	-	4,4,4	0.22	0	6,6,6	0.11	0
2	BTN	A	5600	-	14,17,17	4.19	7 (50%)	19,23,23	3.65	8 (42%)

In the following table, the Chirals column lists the number of chiral outliers, the number of chiral centers analysed, the number of these observed in the model and the number defined in the Chemical Component Dictionary. Similar counts are reported in the Torsion and Rings columns. '-' means no outliers of that kind were identified.

Mol	Type	Chain	Res	Link	Chirals	Torsions	Rings
2	BTN	B	5601	-	-	2/5/28/28	0/2/2/2
2	BTN	A	5600	-	-	2/5/28/28	0/2/2/2

All (14) bond length outliers are listed below:

Mol	Chain	Res	Type	Atoms	Z	Observed(Å)	Ideal(Å)
2	A	5600	BTN	C5-N1	8.03	1.58	1.46
2	B	5601	BTN	C5-N1	6.78	1.56	1.46
2	A	5600	BTN	C2-S1	6.77	1.93	1.82
2	A	5600	BTN	C3-N2	6.67	1.46	1.35
2	B	5601	BTN	C2-S1	6.59	1.93	1.82
2	B	5601	BTN	C3-N2	5.88	1.45	1.35
2	A	5600	BTN	C4-N2	5.80	1.56	1.45
2	B	5601	BTN	C4-N2	5.37	1.55	1.45
2	A	5600	BTN	C3-N1	-4.97	1.27	1.35
2	B	5601	BTN	C3-N1	-4.80	1.27	1.35
2	A	5600	BTN	C6-S1	3.90	1.92	1.81
2	B	5601	BTN	C6-S1	3.78	1.92	1.81
2	A	5600	BTN	O3-C3	3.31	1.30	1.23
2	B	5601	BTN	O3-C3	2.70	1.29	1.23

All (16) bond angle outliers are listed below:

Mol	Chain	Res	Type	Atoms	Z	Observed(°)	Ideal(°)
2	B	5601	BTN	C4-N2-C3	-8.12	105.05	112.62
2	A	5600	BTN	C4-N2-C3	-7.75	105.39	112.62
2	B	5601	BTN	O3-C3-N2	-7.72	114.86	125.94
2	B	5601	BTN	C6-C5-C4	7.46	115.14	108.66
2	A	5600	BTN	C6-C5-C4	7.34	115.03	108.66
2	A	5600	BTN	O3-C3-N2	-6.73	116.28	125.94

Continued on next page...

Continued from previous page...

Mol	Chain	Res	Type	Atoms	Z	Observed(°)	Ideal(°)
2	A	5600	BTN	C6-C5-N1	-5.45	106.10	113.03
2	B	5601	BTN	C6-C5-N1	-5.38	106.19	113.03
2	B	5601	BTN	N2-C3-N1	5.37	113.80	108.76
2	A	5600	BTN	N2-C3-N1	4.66	113.13	108.76
2	A	5600	BTN	C5-C4-N2	3.78	106.74	102.67
2	B	5601	BTN	O3-C3-N1	3.76	131.34	125.94
2	B	5601	BTN	C5-C4-N2	3.69	106.64	102.67
2	A	5600	BTN	O3-C3-N1	3.24	130.59	125.94
2	B	5601	BTN	C5-C6-S1	-2.51	104.15	106.31
2	A	5600	BTN	C2-C4-N2	2.05	114.96	113.13

There are no chirality outliers.

All (4) torsion outliers are listed below:

Mol	Chain	Res	Type	Atoms
2	A	5600	BTN	C11-C10-C9-C8
2	B	5601	BTN	C11-C10-C9-C8
2	A	5600	BTN	C7-C8-C9-C10
2	B	5601	BTN	C7-C8-C9-C10

There are no ring outliers.

2 monomers are involved in 4 short contacts:

Mol	Chain	Res	Type	Clashes	Symm-Clashes
2	B	5601	BTN	2	0
2	A	5600	BTN	2	0

5.7 Other polymers [i](#)

There are no such residues in this entry.

5.8 Polymer linkage issues [i](#)

There are no chain breaks in this entry.

6 Fit of model and data

6.1 Protein, DNA and RNA chains

Unable to reproduce the depositors R factor - this section is therefore empty.

6.2 Non-standard residues in protein, DNA, RNA chains

Unable to reproduce the depositors R factor - this section is therefore empty.

6.3 Carbohydrates

Unable to reproduce the depositors R factor - this section is therefore empty.

6.4 Ligands

Unable to reproduce the depositors R factor - this section is therefore empty.

6.5 Other polymers

Unable to reproduce the depositors R factor - this section is therefore empty.