



# Full wwPDB X-ray Structure Validation Report ⓘ

May 14, 2026 – 05:43 PM EDT

PDB ID : 7I99 / pdb\_00007i99  
Title : Crystal Structure of 22 bound to the PH domain of Btk  
Authors : Brear, P.; West, R.M.; Nicolescu, R.C.B.; Blaszczyk, B.K.; Anwar, A.; Deingruber, T.; Sanders, M.G.; Perez-Areales, F.J.; Stephens, L.R.; Hawkins, P.T.; Spring, D.R.; Hyvonen, M.  
Deposited on : 2025-03-24  
Resolution : 1.97 Å(reported)

This is a Full wwPDB X-ray Structure Validation Report for a publicly released PDB entry.

We welcome your comments at [validation@mail.wwpdb.org](mailto:validation@mail.wwpdb.org)

A user guide is available at

<https://www.wwpdb.org/validation/2017/XrayValidationReportHelp>

with specific help available everywhere you see the ⓘ symbol.

The types of validation reports are described at

<http://www.wwpdb.org/validation/2017/FAQs#types>.

---

The following versions of software and data (see [references ⓘ](#)) were used in the production of this report:

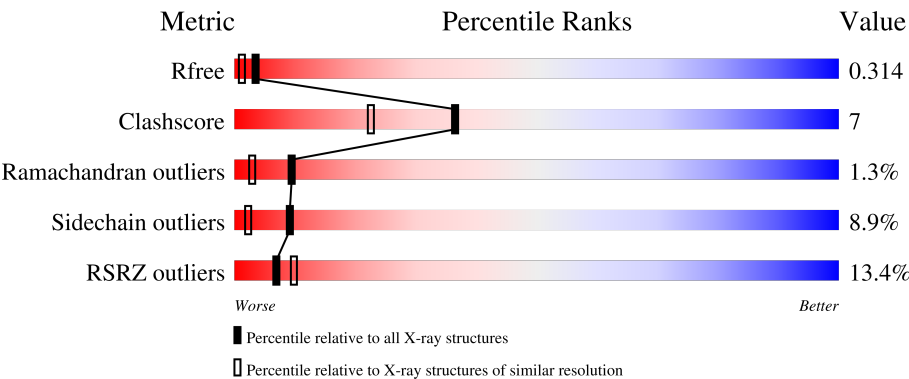
MolProbity : 4-5-2 with Phenix2.0  
Mogul : 2022.3.0, CSD as543be (2022)  
Xtriage (Phenix) : 2.0  
EDS : 3.0  
Buster-report : wwPDB partial adaption of 1.1.7 (2018)  
Percentile statistics : 20250101.v01 (using entries in the PDB archive January 1st 2025)  
CCP4 : 9.0.010 (Gargrove)  
Density-Fitness : 1.0.12  
Ideal geometry (proteins) : Engh & Huber (2001)  
Ideal geometry (DNA, RNA) : Parkinson et al. (1996)  
Validation Pipeline (wwPDB-VP) : 2.49

# 1 Overall quality at a glance i

The following experimental techniques were used to determine the structure:  
*X-RAY DIFFRACTION*

The reported resolution of this entry is 1.97 Å.

Percentile scores (ranging between 0-100) for global validation metrics of the entry are shown in the following graphic. The table shows the number of entries on which the scores are based.



Metric	Whole archive (#Entries)	Similar resolution (#Entries, resolution range(Å))
$R_{free}$	180053	1506 (1.98-1.98)
Clashscore	190562	1534 (1.98-1.98)
Ramachandran outliers	187476	1518 (1.98-1.98)
Sidechain outliers	187428	1518 (1.98-1.98)
RSRZ outliers	180081	1506 (1.98-1.98)

The table below summarises the geometric issues observed across the polymeric chains and their fit to the electron density. The red, orange, yellow and green segments of the lower bar indicate the fraction of residues that contain outliers for  $\geq 3$ , 2, 1 and 0 types of geometric quality criteria respectively. A grey segment represents the fraction of residues that are not modelled. The numeric value for each fraction is indicated below the corresponding segment, with a dot representing fractions  $\leq 5\%$ . The upper red bar (where present) indicates the fraction of residues that have poor fit to the electron density. The numeric value is given above the bar.

Mol	Chain	Length	Quality of chain
1	A	169	<div><div>12%</div><div><div></div><div></div><div></div><div></div></div><div>76%</div><div>17%</div><div>5% ..</div></div>
1	B	169	<div><div>5%</div><div><div></div><div></div><div></div><div></div></div><div>73%</div><div>19%</div><div>• 5%</div></div>
1	C	169	<div><div>21%</div><div><div></div><div></div><div></div><div></div></div><div>72%</div><div>21%</div><div>• 5%</div></div>
1	D	169	<div><div>13%</div><div><div></div><div></div><div></div><div></div></div><div>73%</div><div>20%</div><div>• 7%</div></div>

## 2 Entry composition

There are 5 unique types of molecules in this entry. The entry contains 5679 atoms, of which 0 are hydrogens and 0 are deuteriums.

In the tables below, the ZeroOcc column contains the number of atoms modelled with zero occupancy, the AltConf column contains the number of residues with at least one atom in alternate conformation and the Trace column contains the number of residues modelled with at most 2 atoms.

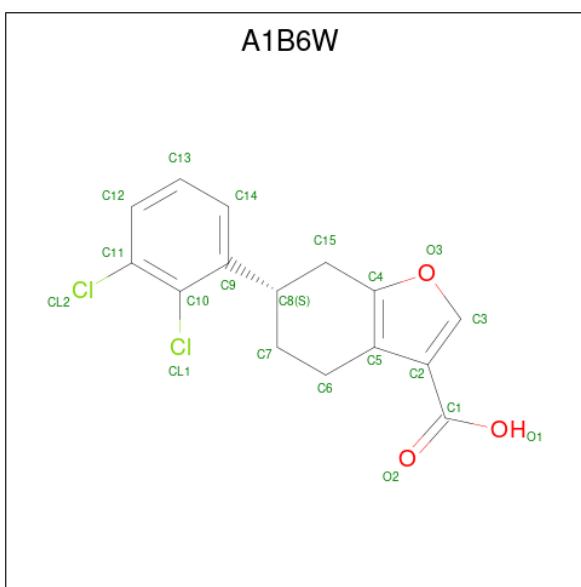
- Molecule 1 is a protein called Tyrosine-protein kinase BTK.

Mol	Chain	Residues	Atoms					ZeroOcc	AltConf	Trace
1	A	167	Total	C	N	O	S	0	1	0
			1398	897	244	251	6			
1	B	161	Total	C	N	O	S	0	2	0
			1356	874	233	243	6			
1	C	161	Total	C	N	O	S	0	1	0
			1343	865	230	242	6			
1	D	158	Total	C	N	O	S	0	0	0
			1317	851	226	235	5			

There are 4 discrepancies between the modelled and reference sequences:

Chain	Residue	Modelled	Actual	Comment	Reference
A	145	SER	CYS	engineered mutation	UNP Q06187
B	145	SER	CYS	engineered mutation	UNP Q06187
C	145	SER	CYS	engineered mutation	UNP Q06187
D	145	SER	CYS	engineered mutation	UNP Q06187

- Molecule 2 is (6S)-6-(2,3-dichlorophenyl)-4,5,6,7-tetrahydro-1-benzofuran-3-carboxylic acid (CCD ID: A1B6W) (formula: C<sub>15</sub>H<sub>12</sub>Cl<sub>2</sub>O<sub>3</sub>).



Mol	Chain	Residues	Atoms				ZeroOcc	AltConf
2	A	1	Total	C	Cl	O	0	0
			20	15	2	3		
2	B	1	Total	C	Cl	O	0	0
			20	15	2	3		
2	C	1	Total	C	Cl	O	0	0
			20	15	2	3		
2	D	1	Total	C	Cl	O	0	0
			20	15	2	3		

- Molecule 3 is ZINC ION (CCD ID: ZN) (formula: Zn).

Mol	Chain	Residues	Atoms		ZeroOcc	AltConf
3	A	1	Total	Zn	1	0
			1	1		
3	B	1	Total	Zn	1	0
			1	1		
3	C	1	Total	Zn	1	0
			1	1		
3	D	1	Total	Zn	1	0
			1	1		

- Molecule 4 is MAGNESIUM ION (CCD ID: MG) (formula: Mg).

Mol	Chain	Residues	Atoms		ZeroOcc	AltConf
4	A	1	Total	Mg	1	0
			1	1		

*Continued on next page...*

*Continued from previous page...*

Mol	Chain	Residues	Atoms		ZeroOcc	AltConf
4	C	1	Total	Mg	1	0
			1	1		
4	D	1	Total	Mg	1	0
			1	1		

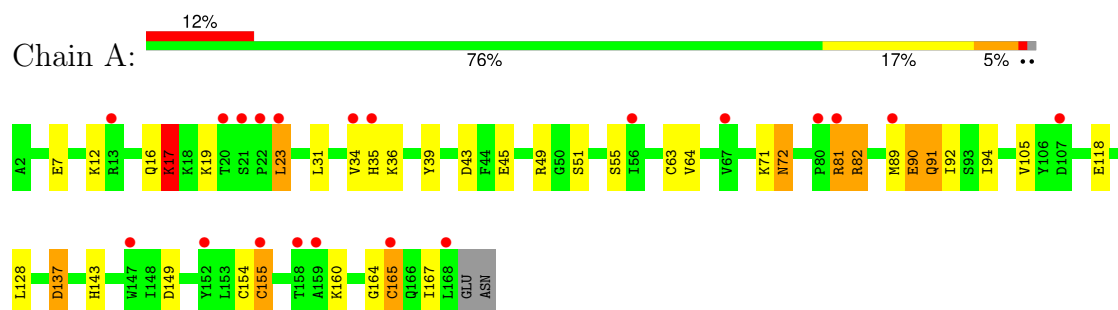
- Molecule 5 is water.

Mol	Chain	Residues	Atoms		ZeroOcc	AltConf
5	A	56	Total	O	0	0
			56	56		
5	B	58	Total	O	0	0
			58	58		
5	C	33	Total	O	0	0
			33	33		
5	D	31	Total	O	0	0
			31	31		

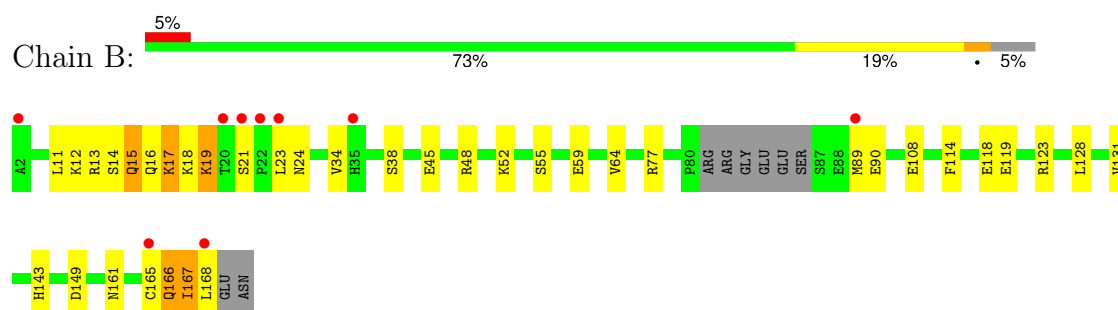
### 3 Residue-property plots [i](#)

These plots are drawn for all protein, RNA, DNA and oligosaccharide chains in the entry. The first graphic for a chain summarises the proportions of the various outlier classes displayed in the second graphic. The second graphic shows the sequence view annotated by issues in geometry and electron density. Residues are color-coded according to the number of geometric quality criteria for which they contain at least one outlier: green = 0, yellow = 1, orange = 2 and red = 3 or more. A red dot above a residue indicates a poor fit to the electron density ( $RSRZ > 2$ ). Stretches of 2 or more consecutive residues without any outlier are shown as a green connector. Residues present in the sample, but not in the model, are shown in grey.

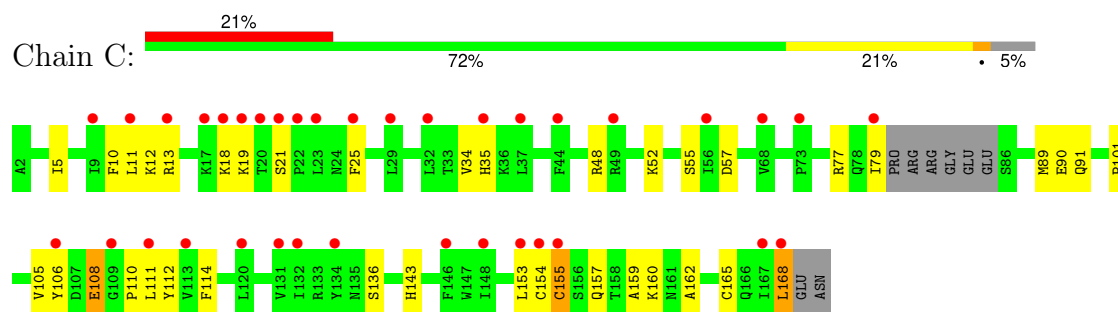
#### • Molecule 1: Tyrosine-protein kinase BTK



#### • Molecule 1: Tyrosine-protein kinase BTK

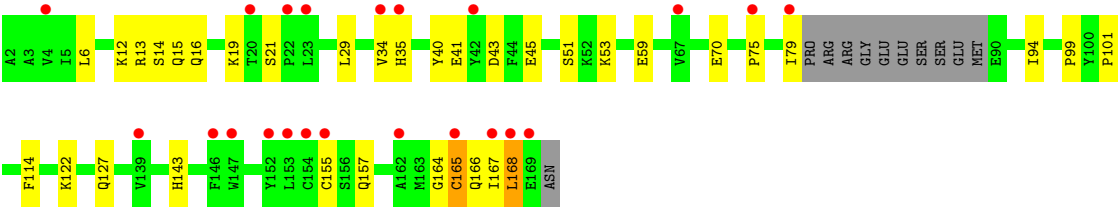


#### • Molecule 1: Tyrosine-protein kinase BTK



#### • Molecule 1: Tyrosine-protein kinase BTK





## 4 Data and refinement statistics

Property	Value	Source
Space group	P 1 21 1	Depositor
Cell constants a, b, c, $\alpha$ , $\beta$ , $\gamma$	68.51Å 67.51Å 79.46Å 90.00° 100.55° 90.00°	Depositor
Resolution (Å)	56.37 – 1.97 56.37 – 1.97	Depositor EDS
% Data completeness (in resolution range)	95.5 (56.37-1.97) 95.4 (56.37-1.97)	Depositor EDS
$R_{merge}$	0.13	Depositor
$R_{sym}$	(Not available)	Depositor
$\langle I/\sigma(I) \rangle$ <sup>1</sup>	1.06 (at 1.97Å)	Xtriage
Refinement program	BUSTER 2.10.4 (10-JUL-2024)	Depositor
R, $R_{free}$	0.263 , 0.316 0.259 , 0.314	Depositor DCC
$R_{free}$ test set	2435 reflections (4.83%)	wwPDB-VP
Wilson B-factor (Å <sup>2</sup> )	43.6	Xtriage
Anisotropy	0.412	Xtriage
Bulk solvent $k_{sol}$ (e/Å <sup>3</sup> ), $B_{sol}$ (Å <sup>2</sup> )	0.34 , 52.7	EDS
L-test for twinning <sup>2</sup>	$\langle  L  \rangle = 0.51$ , $\langle L^2 \rangle = 0.34$	Xtriage
Estimated twinning fraction	No twinning to report.	Xtriage
$F_o, F_c$ correlation	0.95	EDS
Total number of atoms	5679	wwPDB-VP
Average B, all atoms (Å <sup>2</sup> )	66.0	wwPDB-VP

Xtriage's analysis on translational NCS is as follows: *The largest off-origin peak in the Patterson function is 7.25% of the height of the origin peak. No significant pseudotranslation is detected.*

<sup>1</sup>Intensities estimated from amplitudes.

<sup>2</sup>Theoretical values of  $\langle |L| \rangle$ ,  $\langle L^2 \rangle$  for acentric reflections are 0.5, 0.333 respectively for untwinned datasets, and 0.375, 0.2 for perfectly twinned datasets.



## 5 Model quality

### 5.1 Standard geometry

Bond lengths and bond angles in the following residue types are not validated in this section: MG, A1B6W, ZN

The Z score for a bond length (or angle) is the number of standard deviations the observed value is removed from the expected value. A bond length (or angle) with  $|Z| > 5$  is considered an outlier worth inspection. RMSZ is the root-mean-square of all Z scores of the bond lengths (or angles).

Mol	Chain	Bond lengths		Bond angles	
		RMSZ	# Z  >5	RMSZ	# Z  >5
1	A	0.86	0/1433	1.17	11/1932 (0.6%)
1	B	0.79	0/1390	1.06	0/1875
1	C	0.67	0/1375	1.04	5/1853 (0.3%)
1	D	0.67	0/1349	1.24	8/1819 (0.4%)
All	All	0.75	0/5547	1.13	24/7479 (0.3%)

Chiral center outliers are detected by calculating the chiral volume of a chiral center and verifying if the center is modelled as a planar moiety or with the opposite hand. A planarity outlier is detected by checking planarity of atoms in a peptide group, atoms in a mainchain group or atoms of a sidechain that are expected to be planar.

Mol	Chain	#Chirality outliers	#Planarity outliers
1	A	0	2
1	C	0	2
All	All	0	4

There are no bond length outliers.

All (24) bond angle outliers are listed below:

Mol	Chain	Res	Type	Atoms	Z	Observed(°)	Ideal(°)
1	D	168	LEU	O-C-N	-21.84	95.61	123.13
1	D	168	LEU	CA-C-N	14.25	147.35	121.70
1	D	168	LEU	C-N-CA	14.25	147.35	121.70
1	D	164	GLY	CA-C-N	6.97	130.18	120.29
1	D	164	GLY	C-N-CA	6.97	130.18	120.29
1	A	164	GLY	CA-C-N	6.79	129.94	120.29
1	A	164	GLY	C-N-CA	6.79	129.94	120.29
1	D	43	ASP	CA-CB-CG	6.53	119.13	112.60
1	C	153	LEU	CA-C-N	6.12	128.95	120.63
1	C	153	LEU	C-N-CA	6.12	128.95	120.63

*Continued on next page...*

*Continued from previous page...*

Mol	Chain	Res	Type	Atoms	Z	Observed(°)	Ideal(°)
1	A	72	ASN	CA-CB-CG	5.94	118.54	112.60
1	A	43	ASP	CA-CB-CG	5.80	118.40	112.60
1	A	118	GLU	CA-C-N	5.55	128.17	120.29
1	A	118	GLU	C-N-CA	5.55	128.17	120.29
1	A	167	ILE	CA-C-N	5.32	131.28	121.70
1	A	167	ILE	C-N-CA	5.32	131.28	121.70
1	C	10	PHE	CA-CB-CG	5.23	119.03	113.80
1	A	137	ASP	CA-CB-CG	5.13	117.73	112.60
1	A	154	CYS	CA-C-N	5.10	129.88	122.08
1	A	154	CYS	C-N-CA	5.10	129.88	122.08
1	D	75	PRO	CA-C-N	5.09	127.61	120.28
1	D	75	PRO	C-N-CA	5.09	127.61	120.28
1	C	89	MET	CA-C-N	5.06	127.31	120.38
1	C	89	MET	C-N-CA	5.06	127.31	120.38

There are no chirality outliers.

All (4) planarity outliers are listed below:

Mol	Chain	Res	Type	Group
1	A	81	ARG	Sidechain
1	A	82	ARG	Sidechain
1	C	136[A]	SER	Mainchain
1	C	136[B]	SER	Mainchain

## 5.2 Too-close contacts [i](#)

In the following table, the Non-H and H(model) columns list the number of non-hydrogen atoms and hydrogen atoms in the chain respectively. The H(added) column lists the number of hydrogen atoms added and optimized by MolProbity. The Clashes column lists the number of clashes within the asymmetric unit, whereas Symm-Clashes lists symmetry-related clashes.

Mol	Chain	Non-H	H(model)	H(added)	Clashes	Symm-Clashes
1	A	1398	0	1402	22	0
1	B	1356	0	1359	19	0
1	C	1343	0	1350	20	1
1	D	1317	0	1327	13	0
2	A	20	0	0	4	0
2	B	20	0	0	1	0
2	C	20	0	0	2	0
2	D	20	0	0	2	0
3	A	1	0	0	0	0

*Continued on next page...*

*Continued from previous page...*

Mol	Chain	Non-H	H(model)	H(added)	Clashes	Symm-Clashes
3	B	1	0	0	0	0
3	C	1	0	0	0	0
3	D	1	0	0	0	0
4	A	1	0	0	0	0
4	C	1	0	0	0	0
4	D	1	0	0	0	0
5	A	56	0	0	0	0
5	B	58	0	0	0	0
5	C	33	0	0	0	0
5	D	31	0	0	0	0
All	All	5679	0	5438	78	1

The all-atom clashscore is defined as the number of clashes found per 1000 atoms (including hydrogen atoms). The all-atom clashscore for this structure is 7.

All (78) close contacts within the same asymmetric unit are listed below, sorted by their clash magnitude.

Atom-1	Atom-2	Interatomic distance (Å)	Clash overlap (Å)
1:A:16:GLN:HE21	1:A:17:LYS:NZ	1.64	0.96
1:B:143:HIS:ND1	1:B:165:CYS:SG	2.41	0.93
1:A:16:GLN:HA	2:A:201:A1B6W:CL1	2.07	0.92
1:B:52:LYS:NZ	1:B:55:SER:HB2	1.87	0.90
2:D:201:A1B6W:CL1	2:D:201:A1B6W:C7	2.68	0.79
1:C:34:VAL:HG23	1:C:35:HIS:NE2	1.99	0.77
1:D:16:GLN:HG2	1:D:21:SER:HB3	1.69	0.75
1:B:166:GLN:HG3	1:B:167:ILE:H	1.53	0.74
1:A:143:HIS:ND1	1:A:165:CYS:SG	2.63	0.72
1:B:52:LYS:HZ3	1:B:55:SER:HB2	1.53	0.72
1:A:34:VAL:HG23	1:A:35[B]:HIS:CE1	2.26	0.70
1:A:16:GLN:HE21	1:A:17:LYS:HZ1	1.38	0.69
1:B:52:LYS:HZ1	1:B:55:SER:HB2	1.56	0.69
1:B:16:GLN:HG3	1:B:24:ASN:HB2	1.76	0.67
1:B:18:LYS:HB3	1:B:19:LYS:HZ3	1.62	0.63
1:C:34:VAL:HG23	1:C:35:HIS:CD2	2.34	0.62
1:C:105:VAL:HG22	1:C:110:PRO:HB3	1.81	0.61
1:C:34:VAL:HG23	1:C:35:HIS:CE1	2.35	0.61
1:D:143:HIS:ND1	1:D:165:CYS:SG	2.74	0.61
1:B:18:LYS:HB3	1:B:19:LYS:NZ	2.15	0.61
2:A:201:A1B6W:CL1	2:A:201:A1B6W:C15	2.86	0.60
1:A:17:LYS:HG2	2:A:201:A1B6W:CL2	2.38	0.59
1:B:166:GLN:HG3	1:B:167:ILE:N	2.18	0.58

*Continued on next page...*

*Continued from previous page...*

Atom-1	Atom-2	Interatomic distance (Å)	Clash overlap (Å)
1:D:12:LYS:HE2	2:D:201:A1B6W:O1	2.04	0.58
1:C:155:CYS:HB2	1:C:157:GLN:HG3	1.86	0.57
1:C:143:HIS:ND1	1:C:155:CYS:SG	2.77	0.57
1:A:16:GLN:NE2	1:A:17:LYS:NZ	2.46	0.56
2:C:201:A1B6W:C15	2:C:201:A1B6W:CL1	2.91	0.56
1:B:17:LYS:HZ2	1:B:149:ASP:H	1.53	0.55
1:C:106:TYR:HD2	1:C:108:GLU:HG2	1.71	0.55
2:B:201:A1B6W:C15	2:B:201:A1B6W:CL1	2.93	0.53
1:A:143:HIS:HA	1:A:165:CYS:SG	2.48	0.53
1:A:90:GLU:C	1:A:91:GLN:HG3	2.34	0.53
1:D:34:VAL:HG23	1:D:35:HIS:CD2	2.44	0.53
1:B:13:ARG:HD3	1:B:23:LEU:HD22	1.92	0.52
1:C:13:ARG:HG2	1:C:25:PHE:CE2	2.45	0.52
1:A:17:LYS:HE2	1:A:160:LYS:NZ	2.25	0.52
1:A:16:GLN:HE21	1:A:17:LYS:HZ2	1.53	0.51
1:A:16:GLN:CA	2:A:201:A1B6W:CL1	2.90	0.51
1:C:159:ALA:HB3	1:C:162:ALA:HB2	1.92	0.51
2:C:201:A1B6W:CL1	2:C:201:A1B6W:C7	2.97	0.50
1:A:64:VAL:HG21	1:A:128:LEU:HB3	1.93	0.50
1:C:52:LYS:HE2	1:C:55:SER:HB2	1.92	0.49
1:C:11:LEU:HB3	1:C:114:PHE:HB2	1.95	0.49
1:A:12:LYS:NZ	1:A:39:TYR:CE1	2.82	0.48
1:A:36:LYS:HE2	1:A:55:SER:OG	2.14	0.47
1:B:14:SER:O	1:B:15:GLN:HB2	2.14	0.47
1:C:34:VAL:CG2	1:C:35:HIS:NE2	2.76	0.47
1:B:119:GLU:O	1:B:123:ARG:HG2	2.14	0.47
1:A:7:GLU:OE2	1:A:49:ARG:HD3	2.15	0.47
1:D:155:CYS:HB3	1:D:165:CYS:HB3	1.57	0.47
1:D:79:ILE:HG12	1:D:99:PRO:HB2	1.98	0.46
1:C:13:ARG:HD2	1:C:112:TYR:HB2	1.97	0.46
1:A:17:LYS:HE2	1:A:160:LYS:HZ1	1.81	0.46
1:B:166:GLN:HE21	1:B:166:GLN:HB2	1.55	0.46
1:B:11:LEU:HB3	1:B:114:PHE:HB2	1.99	0.45
1:C:5:ILE:HD11	1:C:34:VAL:HG13	1.98	0.45
1:A:63:CYS:HB3	1:A:105:VAL:HB	2.00	0.44
1:D:101:PRO:HB3	1:D:114:PHE:CE2	2.52	0.44
1:B:17:LYS:HA	1:B:21:SER:HB3	2.00	0.44
1:B:64:VAL:HG21	1:B:128:LEU:HB3	2.00	0.44
1:A:16:GLN:HG2	1:A:17:LYS:HZ2	1.82	0.44
1:D:40:TYR:HA	1:D:53:LYS:HG2	2.00	0.44
1:D:41:GLU:HG3	1:D:53:LYS:HD3	1.99	0.43

*Continued on next page...*

Continued from previous page...

Atom-1	Atom-2	Interatomic distance (Å)	Clash overlap (Å)
1:C:101:PRO:HB3	1:C:114:PHE:CE2	2.54	0.43
1:B:77:ARG:HD2	1:B:114:PHE:CE2	2.53	0.43
1:D:101:PRO:HB3	1:D:114:PHE:CD2	2.55	0.42
1:A:71:LYS:HE2	1:A:71:LYS:HB3	1.91	0.41
1:A:155:CYS:HB3	1:A:165:CYS:HB3	1.87	0.41
1:C:12:LYS:HE3	1:C:12:LYS:HB3	1.91	0.41
1:B:34:VAL:HG12	1:B:131:VAL:HG12	2.03	0.41
1:D:6:LEU:HD11	1:D:127:GLN:HG3	2.02	0.41
1:C:25:PHE:CE1	1:C:77:ARG:NH2	2.89	0.41
1:A:23:LEU:HD12	1:A:23:LEU:HA	1.96	0.41
1:C:155:CYS:HB3	1:C:165:CYS:HB3	2.03	0.41
1:C:91:GLN:HG3	1:D:94:ILE:HG23	2.02	0.40
1:C:143:HIS:CE1	1:C:155:CYS:SG	3.14	0.40
1:D:99:PRO:O	1:D:101:PRO:HD3	2.22	0.40

All (1) symmetry-related close contacts are listed below. The label for Atom-2 includes the symmetry operator and encoded unit-cell translations to be applied.

Atom-1	Atom-2	Interatomic distance (Å)	Clash overlap (Å)
1:C:19:LYS:CB	1:C:168:LEU:CD1[2_655]	1.45	0.75

## 5.3 Torsion angles [i](#)

### 5.3.1 Protein backbone [i](#)

In the following table, the Percentiles column shows the percent Ramachandran outliers of the chain as a percentile score with respect to all X-ray entries followed by that with respect to entries of similar resolution.

The Analysed column shows the number of residues for which the backbone conformation was analysed, and the total number of residues.

Mol	Chain	Analysed	Favoured	Allowed	Outliers	Percentiles	
1	A	166/169 (98%)	153 (92%)	10 (6%)	3 (2%)	6	1
1	B	159/169 (94%)	152 (96%)	5 (3%)	2 (1%)	9	3
1	C	158/169 (94%)	143 (90%)	12 (8%)	3 (2%)	6	1
1	D	154/169 (91%)	147 (96%)	7 (4%)	0	100	100
All	All	637/676 (94%)	595 (93%)	34 (5%)	8 (1%)	9	3

All (8) Ramachandran outliers are listed below:

Mol	Chain	Res	Type
1	B	15	GLN
1	B	17	LYS
1	C	108	GLU
1	A	89	MET
1	C	18	LYS
1	C	21	SER
1	A	17	LYS
1	A	90	GLU

### 5.3.2 Protein sidechains [i](#)

In the following table, the Percentiles column shows the percent sidechain outliers of the chain as a percentile score with respect to all X-ray entries followed by that with respect to entries of similar resolution.

The Analysed column shows the number of residues for which the sidechain conformation was analysed, and the total number of residues.

Mol	Chain	Analysed	Rotameric	Outliers	Percentiles	
1	A	157/158 (99%)	141 (90%)	16 (10%)	7	1
1	B	153/158 (97%)	139 (91%)	14 (9%)	8	2
1	C	152/158 (96%)	143 (94%)	9 (6%)	18	8
1	D	148/158 (94%)	133 (90%)	15 (10%)	7	1
All	All	610/632 (96%)	556 (91%)	54 (9%)	9	2

All (54) residues with a non-rotameric sidechain are listed below:

Mol	Chain	Res	Type
1	A	17	LYS
1	A	19	LYS
1	A	23	LEU
1	A	31	LEU
1	A	45	GLU
1	A	51	SER
1	A	72	ASN
1	A	81	ARG
1	A	82	ARG
1	A	91	GLN
1	A	92	ILE
1	A	94	ILE

*Continued on next page...*

*Continued from previous page...*

Mol	Chain	Res	Type
1	A	137	ASP
1	A	149	ASP
1	A	155	CYS
1	A	165	CYS
1	B	12	LYS
1	B	19	LYS
1	B	38	SER
1	B	45	GLU
1	B	48	ARG
1	B	59	GLU
1	B	89	MET
1	B	90	GLU
1	B	108	GLU
1	B	118	GLU
1	B	161	ASN
1	B	166	GLN
1	B	167	ILE
1	B	168	LEU
1	C	48	ARG
1	C	57	ASP
1	C	79	ILE
1	C	90	GLU
1	C	111	LEU
1	C	154	CYS
1	C	155	CYS
1	C	160	LYS
1	C	168	LEU
1	D	13	ARG
1	D	14	SER
1	D	15	GLN
1	D	19	LYS
1	D	29	LEU
1	D	45	GLU
1	D	51	SER
1	D	59	GLU
1	D	70	GLU
1	D	122	LYS
1	D	157	GLN
1	D	165	CYS
1	D	166	GLN
1	D	167	ILE
1	D	168	LEU

Sometimes sidechains can be flipped to improve hydrogen bonding and reduce clashes. All (8) such sidechains are listed below:

Mol	Chain	Res	Type
1	A	16	GLN
1	A	126	HIS
1	A	127	GLN
1	B	161	ASN
1	B	166	GLN
1	C	16	GLN
1	C	166	GLN
1	D	35	HIS

### 5.3.3 RNA ⓘ

There are no RNA molecules in this entry.

## 5.4 Non-standard residues in protein, DNA, RNA chains ⓘ

There are no non-standard protein/DNA/RNA residues in this entry.

## 5.5 Carbohydrates ⓘ

There are no oligosaccharides in this entry.

## 5.6 Ligand geometry ⓘ

Of 11 ligands modelled in this entry, 7 are monoatomic - leaving 4 for Mogul analysis.

In the following table, the Counts columns list the number of bonds (or angles) for which Mogul statistics could be retrieved, the number of bonds (or angles) that are observed in the model and the number of bonds (or angles) that are defined in the Chemical Component Dictionary. The Link column lists molecule types, if any, to which the group is linked. The Z score for a bond length (or angle) is the number of standard deviations the observed value is removed from the expected value. A bond length (or angle) with  $|Z| > 2$  is considered an outlier worth inspection. RMSZ is the root-mean-square of all Z scores of the bond lengths (or angles).

Mol	Type	Chain	Res	Link	Bond lengths			Bond angles		
					Counts	RMSZ	# $ Z  > 2$	Counts	RMSZ	# $ Z  > 2$
2	A1B6W	C	201	1	22,22,22	1.22	3 (13%)	25,32,32	1.60	3 (12%)
2	A1B6W	D	201	1	22,22,22	1.15	3 (13%)	25,32,32	1.36	4 (16%)
2	A1B6W	A	201	1	22,22,22	1.11	2 (9%)	25,32,32	1.45	5 (20%)
2	A1B6W	B	201	1	22,22,22	1.10	3 (13%)	25,32,32	1.45	5 (20%)



In the following table, the Chirals column lists the number of chiral outliers, the number of chiral centers analysed, the number of these observed in the model and the number defined in the Chemical Component Dictionary. Similar counts are reported in the Torsion and Rings columns. '-' means no outliers of that kind were identified.

Mol	Type	Chain	Res	Link	Chirals	Torsions	Rings
2	A1B6W	C	201	1	-	8/8/17/17	0/3/3/3
2	A1B6W	D	201	1	-	2/8/17/17	0/3/3/3
2	A1B6W	A	201	1	-	3/8/17/17	0/3/3/3
2	A1B6W	B	201	1	-	4/8/17/17	0/3/3/3

All (11) bond length outliers are listed below:

Mol	Chain	Res	Type	Atoms	Z	Observed(Å)	Ideal(Å)
2	A	201	A1B6W	O1-C1	-3.51	1.21	1.30
2	B	201	A1B6W	O1-C1	-3.46	1.21	1.30
2	D	201	A1B6W	O1-C1	-3.43	1.21	1.30
2	C	201	A1B6W	O1-C1	-3.34	1.21	1.30
2	C	201	A1B6W	C2-C1	-2.67	1.44	1.48
2	D	201	A1B6W	C2-C1	-2.64	1.44	1.48
2	D	201	A1B6W	C11-C10	-2.60	1.35	1.39
2	A	201	A1B6W	C11-C10	-2.43	1.35	1.39
2	B	201	A1B6W	C2-C1	-2.30	1.45	1.48
2	C	201	A1B6W	C11-C10	-2.27	1.36	1.39
2	B	201	A1B6W	C11-C10	-2.04	1.36	1.39

All (17) bond angle outliers are listed below:

Mol	Chain	Res	Type	Atoms	Z	Observed(°)	Ideal(°)
2	C	201	A1B6W	O3-C4-C15	3.86	123.69	119.88
2	D	201	A1B6W	O3-C4-C15	3.75	123.58	119.88
2	A	201	A1B6W	O3-C4-C15	3.72	123.55	119.88
2	C	201	A1B6W	C7-C8-C9	-3.67	105.17	112.25
2	B	201	A1B6W	O3-C4-C15	3.31	123.15	119.88
2	C	201	A1B6W	C10-C11-CL2	2.94	123.21	120.51
2	D	201	A1B6W	C10-C11-CL2	2.85	123.13	120.51
2	B	201	A1B6W	C10-C11-CL2	2.73	123.02	120.51
2	A	201	A1B6W	C11-C10-C9	2.65	122.22	120.25
2	A	201	A1B6W	C7-C6-C5	-2.49	105.65	111.38
2	B	201	A1B6W	C7-C6-C5	-2.34	105.99	111.38
2	B	201	A1B6W	O1-C1-C2	2.31	121.10	115.69
2	A	201	A1B6W	C10-C11-CL2	2.27	122.60	120.51
2	D	201	A1B6W	O2-C1-C2	-2.19	118.14	122.67
2	B	201	A1B6W	O2-C1-C2	-2.18	118.15	122.67

*Continued on next page...*

*Continued from previous page...*

Mol	Chain	Res	Type	Atoms	Z	Observed(°)	Ideal(°)
2	D	201	A1B6W	O1-C1-C2	2.13	120.67	115.69
2	A	201	A1B6W	O1-C1-C2	2.10	120.61	115.69

There are no chirality outliers.

All (17) torsion outliers are listed below:

Mol	Chain	Res	Type	Atoms
2	A	201	A1B6W	C15-C8-C9-C10
2	B	201	A1B6W	C15-C8-C9-C10
2	C	201	A1B6W	O1-C1-C2-C3
2	C	201	A1B6W	O1-C1-C2-C5
2	C	201	A1B6W	O2-C1-C2-C3
2	C	201	A1B6W	O2-C1-C2-C5
2	D	201	A1B6W	C7-C8-C9-C10
2	D	201	A1B6W	C7-C8-C9-C14
2	A	201	A1B6W	C15-C8-C9-C14
2	B	201	A1B6W	C15-C8-C9-C14
2	C	201	A1B6W	C15-C8-C9-C14
2	C	201	A1B6W	C15-C8-C9-C10
2	C	201	A1B6W	C7-C8-C9-C10
2	B	201	A1B6W	C7-C8-C9-C10
2	C	201	A1B6W	C7-C8-C9-C14
2	A	201	A1B6W	C7-C8-C9-C10
2	B	201	A1B6W	C7-C8-C9-C14

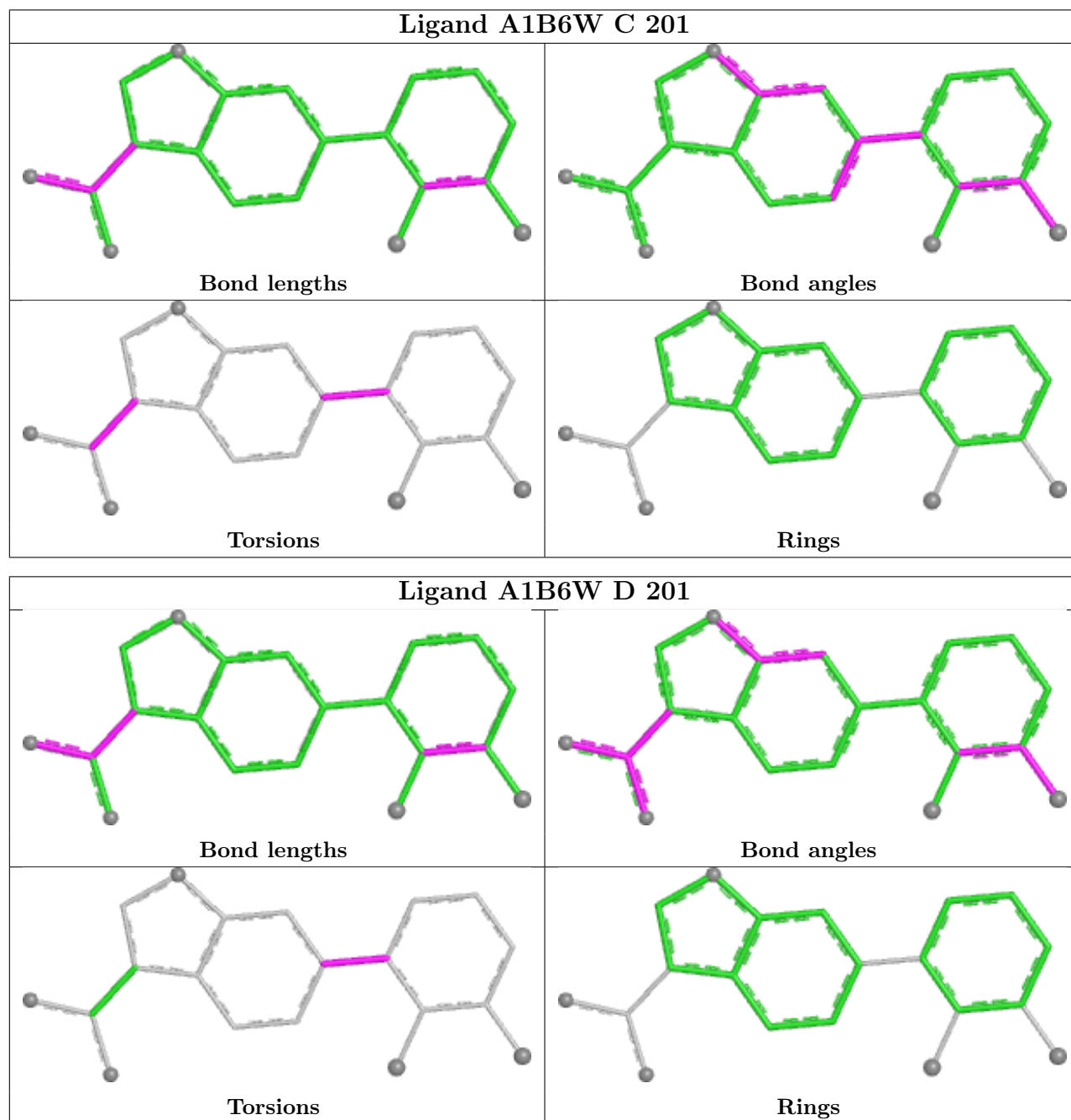
There are no ring outliers.

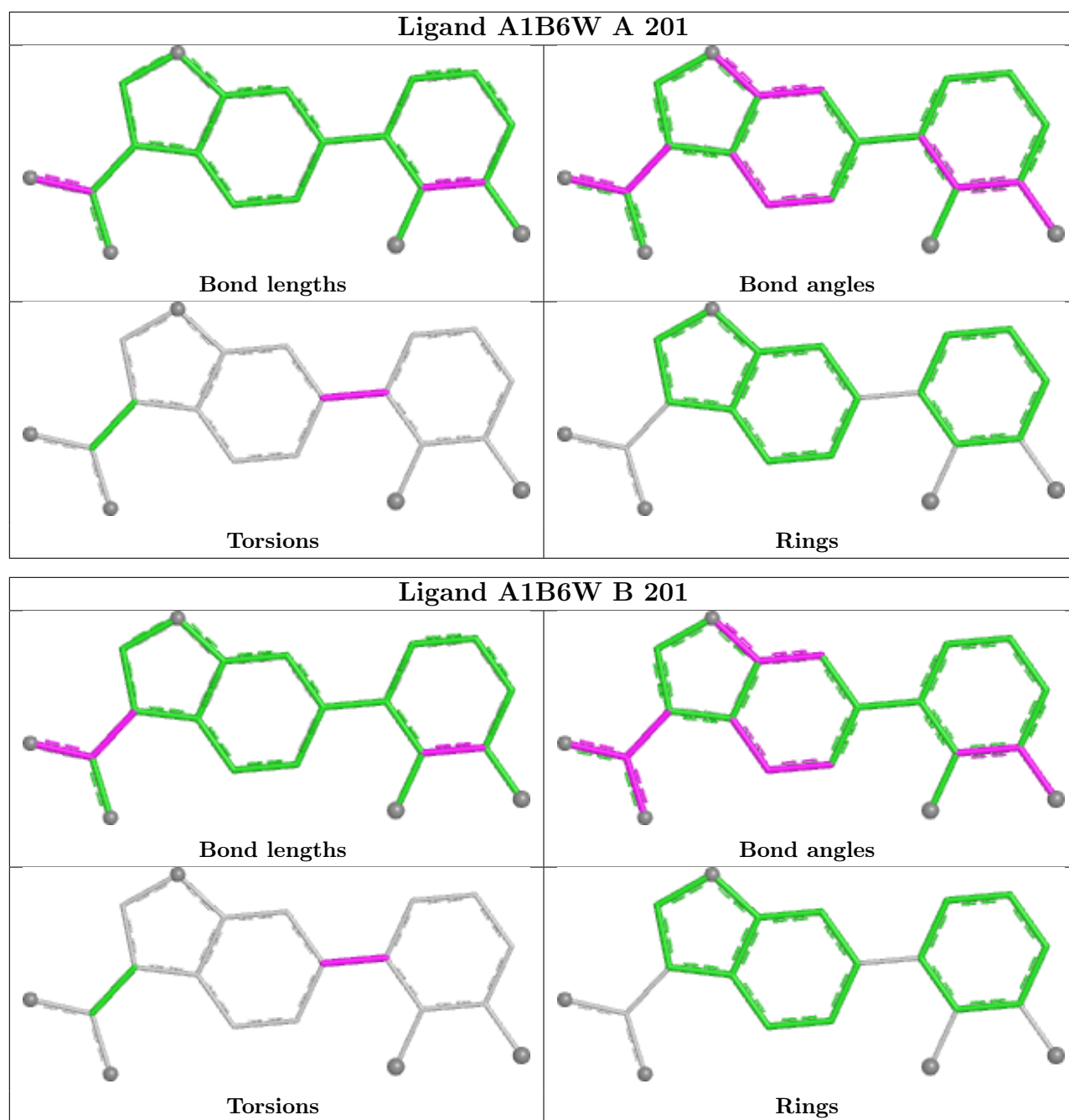
4 monomers are involved in 9 short contacts:

Mol	Chain	Res	Type	Clashes	Symm-Clashes
2	C	201	A1B6W	2	0
2	D	201	A1B6W	2	0
2	A	201	A1B6W	4	0
2	B	201	A1B6W	1	0

The following is a two-dimensional graphical depiction of Mogul quality analysis of bond lengths, bond angles, torsion angles, and ring geometry for all instances of the Ligand of Interest. In addition, ligands with molecular weight > 250 and outliers as shown on the validation Tables will also be included. For torsion angles, if less than 5% of the Mogul distribution of torsion angles is within 10 degrees of the torsion angle in question, then that torsion angle is considered an outlier. Any bond that is central to one or more torsion angles identified as an outlier by Mogul will be highlighted in the graph. For rings, the root-mean-square deviation (RMSD) between the ring in question and similar rings identified by Mogul is calculated over all ring torsion angles. If the

average RMSD is greater than 60 degrees and the minimal RMSD between the ring in question and any Mogul-identified rings is also greater than 60 degrees, then that ring is considered an outlier. The outliers are highlighted in purple. The color gray indicates Mogul did not find sufficient equivalents in the CSD to analyse the geometry.





## 5.7 Other polymers [i](#)

There are no such residues in this entry.

## 5.8 Polymer linkage issues [i](#)

There are no chain breaks in this entry.

## 6 Fit of model and data

### 6.1 Protein, DNA and RNA chains

In the following table, the column labelled ‘#RSRZ > 2’ contains the number (and percentage) of RSRZ outliers, followed by percent RSRZ outliers for the chain as percentile scores relative to all X-ray entries and entries of similar resolution. The OWAB column contains the minimum, median, 95<sup>th</sup> percentile and maximum values of the occupancy-weighted average B-factor per residue. The column labelled ‘Q < 0.9’ lists the number of (and percentage) of residues with an average occupancy less than 0.9.

Mol	Chain	Analysed	<RSRZ>	#RSRZ>2	OWAB(Å <sup>2</sup> )	Q<0.9
1	A	167/169 (98%)	0.84	20 (11%) <b>9</b> <b>12</b>	28, 54, 82, 109	1 (0%)
1	B	161/169 (95%)	0.68	9 (5%) <b>30</b> <b>38</b>	27, 51, 90, 110	2 (1%)
1	C	161/169 (95%)	1.40	36 (22%) <b>2</b> <b>2</b>	39, 77, 102, 119	1 (0%)
1	D	158/169 (93%)	1.24	22 (13%) <b>6</b> <b>9</b>	55, 71, 96, 107	0
All	All	647/676 (95%)	1.04	87 (13%) <b>7</b> <b>10</b>	27, 63, 96, 119	4 (0%)

All (87) RSRZ outliers are listed below:

Mol	Chain	Res	Type	RSRZ
1	C	106	TYR	5.2
1	A	20	THR	5.0
1	C	168	LEU	4.9
1	C	20	THR	4.6
1	B	165	CYS	4.3
1	A	168	LEU	4.2
1	C	154	CYS	4.1
1	C	134	TYR	4.0
1	B	20	THR	3.9
1	C	56	ILE	3.9
1	C	22	PRO	3.8
1	D	79	ILE	3.8
1	D	147	TRP	3.7
1	C	79	ILE	3.6
1	D	169	GLU	3.6
1	D	153	LEU	3.6
1	C	23	LEU	3.5
1	C	167	ILE	3.5
1	D	165	CYS	3.5
1	A	147	TRP	3.4
1	C	21	SER	3.4

*Continued on next page...*

*Continued from previous page...*

Mol	Chain	Res	Type	RSRZ
1	D	146	PHE	3.3
1	C	148	ILE	3.3
1	C	153	LEU	3.2
1	A	155	CYS	3.1
1	A	89	MET	3.0
1	A	165	CYS	3.0
1	B	22	PRO	3.0
1	A	21	SER	2.9
1	D	167	ILE	2.9
1	C	19	LYS	2.9
1	C	132	ILE	2.9
1	A	80	PRO	2.8
1	C	35	HIS	2.8
1	A	13	ARG	2.8
1	B	23	LEU	2.8
1	D	168	LEU	2.8
1	A	23	LEU	2.8
1	D	34	VAL	2.8
1	A	81	ARG	2.7
1	C	111	LEU	2.7
1	B	2	ALA	2.7
1	A	35[A]	HIS	2.7
1	A	159	ALA	2.6
1	C	146	PHE	2.6
1	D	152	TYR	2.6
1	C	131	VAL	2.6
1	D	23	LEU	2.5
1	D	155	CYS	2.4
1	C	68	VAL	2.4
1	D	75	PRO	2.4
1	C	113	VAL	2.4
1	C	32	LEU	2.3
1	C	73	PRO	2.3
1	C	155	CYS	2.3
1	B	168	LEU	2.3
1	D	20	THR	2.3
1	D	35	HIS	2.3
1	B	89	MET	2.3
1	C	18	LYS	2.3
1	C	11	LEU	2.3
1	D	154	CYS	2.2
1	D	162	ALA	2.2

*Continued on next page...*

*Continued from previous page...*

Mol	Chain	Res	Type	RSRZ
1	D	42	TYR	2.2
1	A	107	ASP	2.2
1	D	22	PRO	2.2
1	C	25	PHE	2.2
1	C	9	ILE	2.2
1	D	4	VAL	2.2
1	D	139	VAL	2.2
1	B	35[A]	HIS	2.1
1	A	152	TYR	2.1
1	C	49	ARG	2.1
1	C	29	LEU	2.1
1	C	120	LEU	2.1
1	C	44	PHE	2.1
1	C	17	LYS	2.1
1	D	67	VAL	2.1
1	C	37	LEU	2.1
1	A	56	ILE	2.0
1	C	109	GLY	2.0
1	B	21	SER	2.0
1	A	158	THR	2.0
1	A	22	PRO	2.0
1	A	34	VAL	2.0
1	A	67	VAL	2.0
1	C	13	ARG	2.0

## 6.2 Non-standard residues in protein, DNA, RNA chains [i](#)

There are no non-standard protein/DNA/RNA residues in this entry.

## 6.3 Carbohydrates [i](#)

There are no oligosaccharides in this entry.

## 6.4 Ligands [i](#)

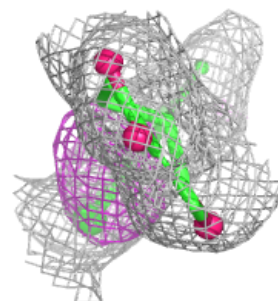
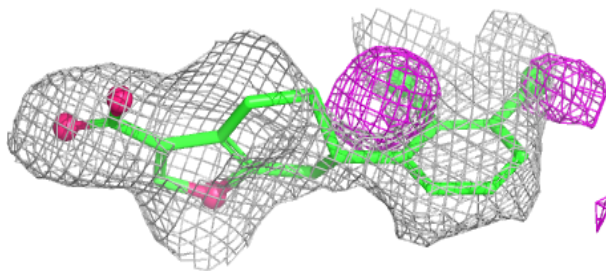
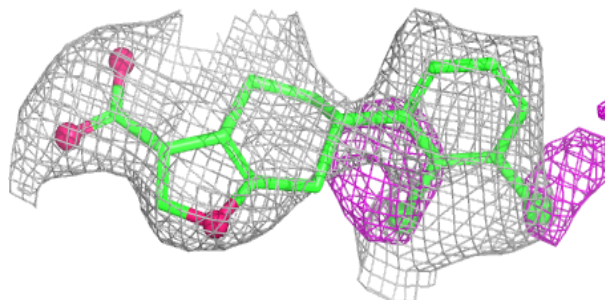
In the following table, the Atoms column lists the number of modelled atoms in the group and the number defined in the chemical component dictionary. The B-factors column lists the minimum, median, 95<sup>th</sup> percentile and maximum values of B factors of atoms in the group. The column labelled 'Q< 0.9' lists the number of atoms with occupancy less than 0.9.

Mol	Type	Chain	Res	Atoms	RSCC	RSR	B-factors( $\text{\AA}^2$ )	Q<0.9
2	A1B6W	A	201	20/20	0.73	0.14	76,80,86,87	0
2	A1B6W	D	201	20/20	0.76	0.13	96,97,99,99	0
2	A1B6W	C	201	20/20	0.78	0.13	100,101,103,104	0
2	A1B6W	B	201	20/20	0.84	0.12	75,77,80,81	0
3	ZN	A	202	1/1	-	-	25,25,25,25	1
3	ZN	B	202	1/1	-	-	23,23,23,23	1
3	ZN	C	202	1/1	-	-	37,37,37,37	1
3	ZN	D	202	1/1	-	-	43,43,43,43	1
4	MG	A	203	1/1	-	-	24,24,24,24	1
4	MG	C	203	1/1	-	-	43,43,43,43	1
4	MG	D	203	1/1	-	-	46,46,46,46	1

The following is a graphical depiction of the model fit to experimental electron density of all instances of the Ligand of Interest. In addition, ligands with molecular weight > 250 and outliers as shown on the geometry validation Tables will also be included. Each fit is shown from different orientation to approximate a three-dimensional view.

**Electron density around A1B6W A 201:**

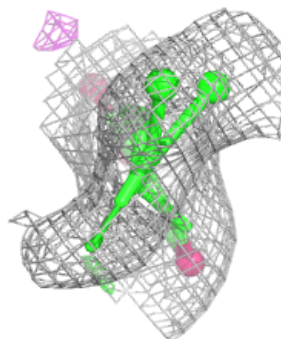
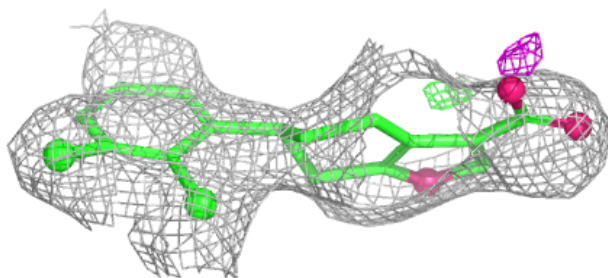
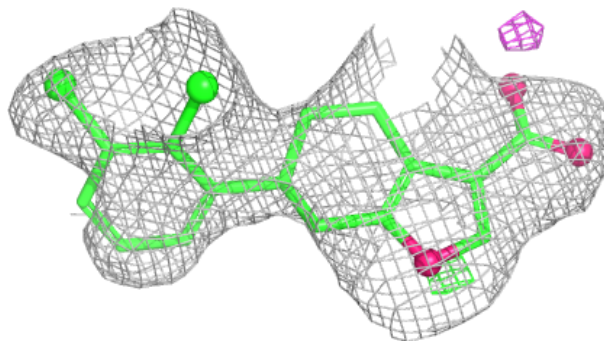
2mF<sub>o</sub>-DF<sub>c</sub> (at 0.7 rmsd) in gray  
mF<sub>o</sub>-DF<sub>c</sub> (at 3 rmsd) in purple (negative)  
and green (positive)



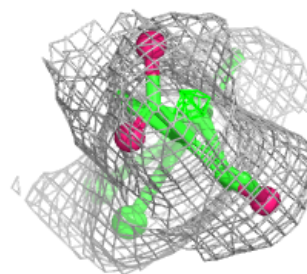
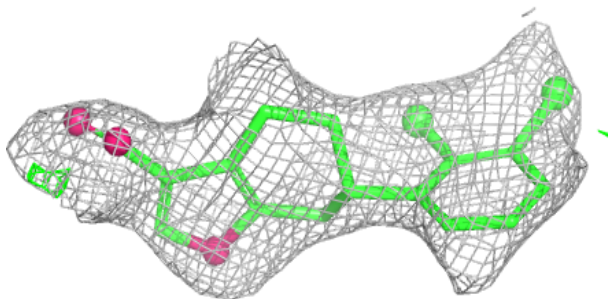
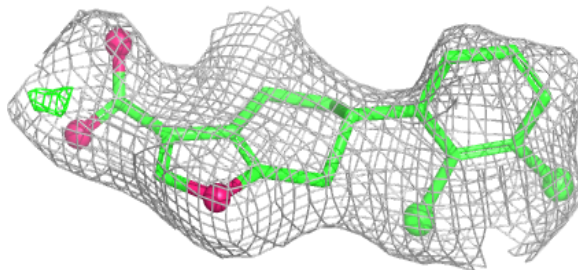


**Electron density around A1B6W D 201:**

$2mF_o-DF_c$  (at 0.7 rmsd) in gray  
 $mF_o-DF_c$  (at 3 rmsd) in purple (negative)  
and green (positive)

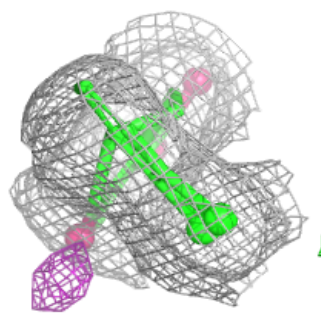
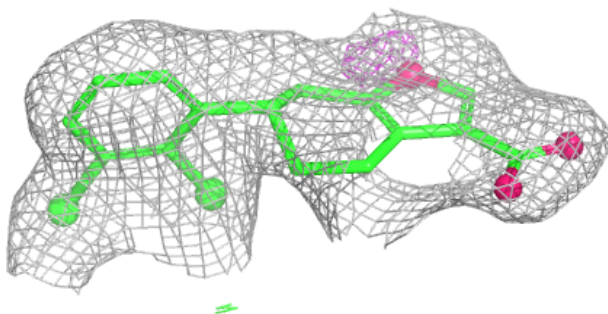
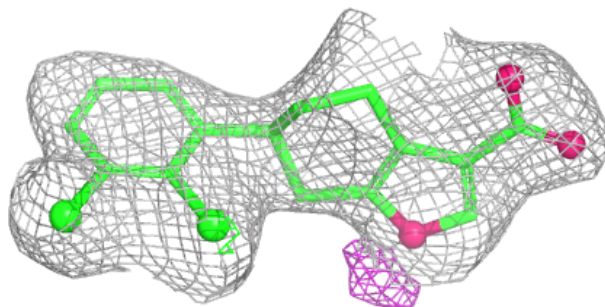
**Electron density around A1B6W C 201:**

$2mF_o-DF_c$  (at 0.7 rmsd) in gray  
 $mF_o-DF_c$  (at 3 rmsd) in purple (negative)  
and green (positive)



**Electron density around A1B6W B 201:**

$2mF_o - DF_c$  (at 0.7 rmsd) in gray  
 $mF_o - DF_c$  (at 3 rmsd) in purple (negative)  
and green (positive)



## 6.5 Other polymers [i](#)

There are no such residues in this entry.