



wwPDB X-ray Structure Validation Summary Report ⓘ

Jan 14, 2024 – 02:59 am GMT

PDB ID : 6I1G
Title : Crystal structure of TP domain from Chlamydia trachomatis Penicillin-Binding Protein 3 in complex with piperacillin
Authors : Bellini, D.; Koekemoer, L.; Newman, H.; Dowson, C.G.
Deposited on : 2018-10-28
Resolution : 2.13 Å(reported)

This is a wwPDB X-ray Structure Validation Summary Report for a publicly released PDB entry.

We welcome your comments at validation@mail.wwpdb.org

A user guide is available at

<https://www.wwpdb.org/validation/2017/XrayValidationReportHelp>

with specific help available everywhere you see the ⓘ symbol.

The types of validation reports are described at

<http://www.wwpdb.org/validation/2017/FAQs#types>.

The following versions of software and data (see [references ⓘ](#)) were used in the production of this report:

MolProbity : 4.02b-467
Mogul : 1.8.4, CSD as541be (2020)
Xtriage (Phenix) : 1.13
EDS : 2.36
buster-report : 1.1.7 (2018)
Percentile statistics : 20191225.v01 (using entries in the PDB archive December 25th 2019)
Refmac : 5.8.0158
CCP4 : 7.0.044 (Gargrove)
Ideal geometry (proteins) : Engh & Huber (2001)
Ideal geometry (DNA, RNA) : Parkinson et al. (1996)
Validation Pipeline (wwPDB-VP) : 2.36

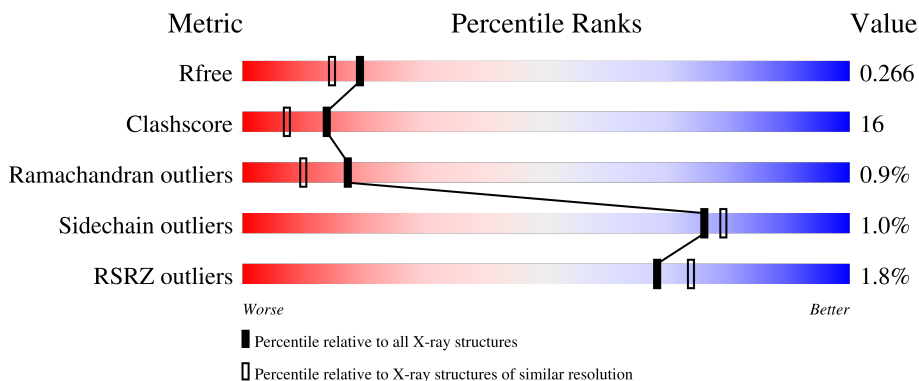
1 Overall quality at a glance

The following experimental techniques were used to determine the structure:

X-RAY DIFFRACTION

The reported resolution of this entry is 2.13 Å.

Percentile scores (ranging between 0-100) for global validation metrics of the entry are shown in the following graphic. The table shows the number of entries on which the scores are based.



Metric	Whole archive (#Entries)	Similar resolution (#Entries, resolution range(Å))
R_{free}	130704	2523 (2.16-2.12)
Clashscore	141614	2653 (2.16-2.12)
Ramachandran outliers	138981	2618 (2.16-2.12)
Sidechain outliers	138945	2617 (2.16-2.12)
RSRZ outliers	127900	2485 (2.16-2.12)

The table below summarises the geometric issues observed across the polymeric chains and their fit to the electron density. The red, orange, yellow and green segments of the lower bar indicate the fraction of residues that contain outliers for ≥ 3 , 2, 1 and 0 types of geometric quality criteria respectively. A grey segment represents the fraction of residues that are not modelled. The numeric value for each fraction is indicated below the corresponding segment, with a dot representing fractions $\leq 5\%$. The upper red bar (where present) indicates the fraction of residues that have poor fit to the electron density. The numeric value is given above the bar.

Mol	Chain	Length	Quality of chain
1	A	346	 65% 29% • 6%
1	B	346	 73% 25% •• 3%

The following table lists non-polymeric compounds, carbohydrate monomers and non-standard residues in protein, DNA, RNA chains that are outliers for geometric or electron-density-fit criteria:

Mol	Type	Chain	Res	Chirality	Geometry	Clashes	Electron density
2	JPP	A	701	X	-	-	-
2	JPP	B	701	X	-	-	-

2 Entry composition

There are 3 unique types of molecules in this entry. The entry contains 5023 atoms, of which 0 are hydrogens and 0 are deuteriums.

In the tables below, the ZeroOcc column contains the number of atoms modelled with zero occupancy, the AltConf column contains the number of residues with at least one atom in alternate conformation and the Trace column contains the number of residues modelled with at most 2 atoms.

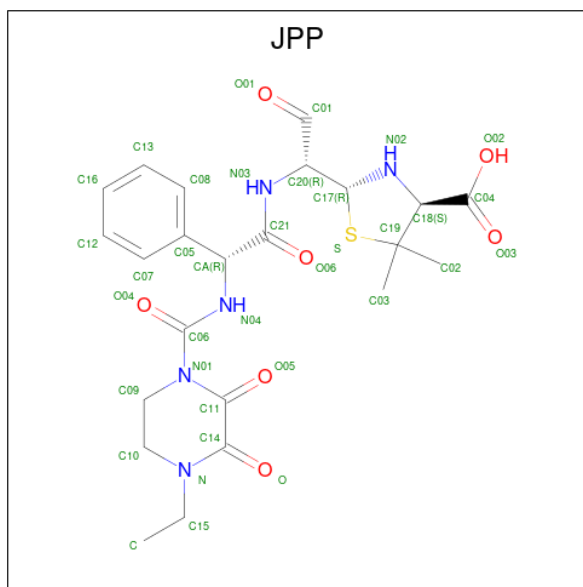
- Molecule 1 is a protein called Penicillin-binding protein, Penicillin-binding protein.

Mol	Chain	Residues	Atoms					ZeroOcc	AltConf	Trace
			Total	C	N	O	S			
1	A	325	2407	1512	410	477	8	0	0	0
1	B	341	2527	1585	427	506	9	0	0	0

There are 18 discrepancies between the modelled and reference sequences:

Chain	Residue	Modelled	Actual	Comment	Reference
A	256	GLY	-	expression tag	UNP A0A0E9FXJ8
A	257	PRO	-	expression tag	UNP A0A0E9FXJ8
A	258	GLY	-	expression tag	UNP A0A0E9FXJ8
A	259	TYR	-	expression tag	UNP A0A0E9FXJ8
A	260	GLN	-	expression tag	UNP A0A0E9FXJ8
A	261	ASP	-	expression tag	UNP A0A0E9FXJ8
A	262	PRO	-	expression tag	UNP A0A0E9FXJ8
A	306	PRO	-	linker	UNP A0A0E9FXJ8
A	307	GLY	-	linker	UNP A0A0E9FXJ8
B	256	GLY	-	expression tag	UNP A0A0E9FXJ8
B	257	PRO	-	expression tag	UNP A0A0E9FXJ8
B	258	GLY	-	expression tag	UNP A0A0E9FXJ8
B	259	TYR	-	expression tag	UNP A0A0E9FXJ8
B	260	GLN	-	expression tag	UNP A0A0E9FXJ8
B	261	ASP	-	expression tag	UNP A0A0E9FXJ8
B	262	PRO	-	expression tag	UNP A0A0E9FXJ8
B	306	PRO	-	linker	UNP A0A0E9FXJ8
B	307	GLY	-	linker	UNP A0A0E9FXJ8

- Molecule 2 is Piperacillin (Open Form) (three-letter code: JPP) (formula: C₂₃H₂₉N₅O₇S) (labeled as "Ligand of Interest" by depositor).



Mol	Chain	Residues	Atoms					ZeroOcc	AltConf
			Total	C	N	O	S		
2	A	1	36	23	5	7	1	0	0
2	B	1	36	23	5	7	1	0	0

- Molecule 3 is water.

Mol	Chain	Residues	Atoms		ZeroOcc	AltConf
			Total	O		
3	A	11	11	11	0	0
3	B	6	6	6	0	0

4 Data and refinement statistics i

Property	Value	Source
Space group	P 32 2 1	Depositor
Cell constants a, b, c, α , β , γ	107.80Å 107.80Å 117.73Å 90.00° 90.00° 120.00°	Depositor
Resolution (Å)	93.36 – 2.13 93.36 – 2.13	Depositor EDS
% Data completeness (in resolution range)	48.5 (93.36-2.13) 48.5 (93.36-2.13)	Depositor EDS
R_{merge}	(Not available)	Depositor
R_{sym}	(Not available)	Depositor
$\langle I/\sigma(I) \rangle$ ¹	1.39 (at 2.12Å)	Xtrriage
Refinement program	REFMAC 5.6.0117	Depositor
R, R_{free}	0.240 , 0.284 0.226 , 0.266	Depositor DCC
R_{free} test set	1118 reflections (5.14%)	wwPDB-VP
Wilson B-factor (Å ²)	16.0	Xtrriage
Anisotropy	0.757	Xtrriage
Bulk solvent k_{sol} (e/Å ³), B_{sol} (Å ²)	0.36 , 24.7	EDS
L-test for twinning ²	$\langle L \rangle = 0.47$, $\langle L^2 \rangle = 0.30$	Xtrriage
Estimated twinning fraction	0.038 for -h,-k,l	Xtrriage
F_o, F_c correlation	0.89	EDS
Total number of atoms	5023	wwPDB-VP
Average B, all atoms (Å ²)	16.0	wwPDB-VP

Xtrriage's analysis on translational NCS is as follows: *The largest off-origin peak in the Patterson function is 4.99% of the height of the origin peak. No significant pseudotranslation is detected.*

¹Intensities estimated from amplitudes.

²Theoretical values of $\langle |L| \rangle$, $\langle L^2 \rangle$ for acentric reflections are 0.5, 0.333 respectively for untwinned datasets, and 0.375, 0.2 for perfectly twinned datasets.

5 Model quality [i](#)

5.1 Standard geometry [i](#)

Bond lengths and bond angles in the following residue types are not validated in this section: JPP

The Z score for a bond length (or angle) is the number of standard deviations the observed value is removed from the expected value. A bond length (or angle) with $|Z| > 5$ is considered an outlier worth inspection. RMSZ is the root-mean-square of all Z scores of the bond lengths (or angles).

Mol	Chain	Bond lengths		Bond angles	
		RMSZ	# Z >5	RMSZ	# Z >5
1	A	0.57	2/2450 (0.1%)	0.68	0/3336
1	B	0.51	1/2575 (0.0%)	0.64	0/3511
All	All	0.54	3/5025 (0.1%)	0.66	0/6847

All (3) bond length outliers are listed below:

Mol	Chain	Res	Type	Atoms	Z	Observed(Å)	Ideal(Å)
1	A	402	TRP	CD2-CE2	5.68	1.48	1.41
1	A	288	TRP	CD2-CE2	5.65	1.48	1.41
1	B	402	TRP	CD2-CE2	5.16	1.47	1.41

There are no bond angle outliers.

There are no chirality outliers.

There are no planarity outliers.

5.2 Too-close contacts [i](#)

In the following table, the Non-H and H(model) columns list the number of non-hydrogen atoms and hydrogen atoms in the chain respectively. The H(added) column lists the number of hydrogen atoms added and optimized by MolProbity. The Clashes column lists the number of clashes within the asymmetric unit, whereas Symm-Clashes lists symmetry-related clashes.

Mol	Chain	Non-H	H(model)	H(added)	Clashes	Symm-Clashes
1	A	2407	0	2395	88	0
1	B	2527	0	2499	68	0
2	A	36	0	26	9	0
2	B	36	0	27	3	0
3	A	11	0	0	0	0
3	B	6	0	0	0	0

Continued on next page...

Continued from previous page...

Mol	Chain	Non-H	H(model)	H(added)	Clashes	Symm-Clashes
All	All	5023	0	4947	157	0

The all-atom clashscore is defined as the number of clashes found per 1000 atoms (including hydrogen atoms). The all-atom clashscore for this structure is 16.

The worst 5 of 157 close contacts within the same asymmetric unit are listed below, sorted by their clash magnitude.

Atom-1	Atom-2	Interatomic distance (Å)	Clash overlap (Å)
1:B:320:SER:OG	2:B:701:JPP:C01	1.67	1.42
1:A:486:VAL:HG13	1:A:490:THR:OG1	1.70	0.90
1:B:449:VAL:HG11	1:B:543:THR:HB	1.56	0.87
1:B:332:ASP:HA	1:B:490:THR:HG21	1.56	0.85
1:A:486:VAL:CG1	1:A:490:THR:OG1	2.28	0.82

There are no symmetry-related clashes.

5.3 Torsion angles [i](#)

5.3.1 Protein backbone [i](#)

In the following table, the Percentiles column shows the percent Ramachandran outliers of the chain as a percentile score with respect to all X-ray entries followed by that with respect to entries of similar resolution.

The Analysed column shows the number of residues for which the backbone conformation was analysed, and the total number of residues.

Mol	Chain	Analysed	Favoured	Allowed	Outliers	Percentiles	
1	A	318/346 (92%)	295 (93%)	19 (6%)	4 (1%)	12	6
1	B	337/346 (97%)	313 (93%)	22 (6%)	2 (1%)	25	17
All	All	655/692 (95%)	608 (93%)	41 (6%)	6 (1%)	17	10

5 of 6 Ramachandran outliers are listed below:

Mol	Chain	Res	Type
1	A	422	THR
1	B	320	SER
1	A	308	GLY
1	A	465	ASP

Continued on next page...

Continued from previous page...

Mol	Chain	Res	Type
1	B	329	ALA

5.3.2 Protein sidechains [i](#)

In the following table, the Percentiles column shows the percent sidechain outliers of the chain as a percentile score with respect to all X-ray entries followed by that with respect to entries of similar resolution.

The Analysed column shows the number of residues for which the sidechain conformation was analysed, and the total number of residues.

Mol	Chain	Analysed	Rotameric	Outliers	Percentiles
1	A	256/273 (94%)	254 (99%)	2 (1%)	81 85
1	B	270/273 (99%)	267 (99%)	3 (1%)	73 76
All	All	526/546 (96%)	521 (99%)	5 (1%)	76 79

All (5) residues with a non-rotameric sidechain are listed below:

Mol	Chain	Res	Type
1	A	436	GLN
1	A	503	GLN
1	B	283	ARG
1	B	311	SER
1	B	531	SER

Sometimes sidechains can be flipped to improve hydrogen bonding and reduce clashes. All (3) such sidechains are listed below:

Mol	Chain	Res	Type
1	A	436	GLN
1	A	447	GLN
1	B	421	HIS

5.3.3 RNA [i](#)

There are no RNA molecules in this entry.

5.4 Non-standard residues in protein, DNA, RNA chains [i](#)

There are no non-standard protein/DNA/RNA residues in this entry.

5.5 Carbohydrates [i](#)

There are no monosaccharides in this entry.

5.6 Ligand geometry [i](#)

2 ligands are modelled in this entry.

In the following table, the Counts columns list the number of bonds (or angles) for which Mogul statistics could be retrieved, the number of bonds (or angles) that are observed in the model and the number of bonds (or angles) that are defined in the Chemical Component Dictionary. The Link column lists molecule types, if any, to which the group is linked. The Z score for a bond length (or angle) is the number of standard deviations the observed value is removed from the expected value. A bond length (or angle) with $|Z| > 2$ is considered an outlier worth inspection. RMSZ is the root-mean-square of all Z scores of the bond lengths (or angles).

Mol	Type	Chain	Res	Link	Bond lengths			Bond angles		
					Counts	RMSZ	# Z > 2	Counts	RMSZ	# Z > 2
2	JPP	B	701	-	33,38,38	2.04	8 (24%)	41,55,55	3.94	19 (46%)
2	JPP	A	701	-	33,38,38	1.98	8 (24%)	41,55,55	2.96	8 (19%)

In the following table, the Chirals column lists the number of chiral outliers, the number of chiral centers analysed, the number of these observed in the model and the number defined in the Chemical Component Dictionary. Similar counts are reported in the Torsion and Rings columns. '-' means no outliers of that kind were identified.

Mol	Type	Chain	Res	Link	Chirals	Torsions	Rings
2	JPP	B	701	-	1/1/12/16	5/26/64/64	0/3/3/3
2	JPP	A	701	-	1/1/12/16	10/26/64/64	0/3/3/3

The worst 5 of 16 bond length outliers are listed below:

Mol	Chain	Res	Type	Atoms	Z	Observed(Å)	Ideal(Å)
2	B	701	JPP	C14-C11	-5.12	1.45	1.53
2	A	701	JPP	C06-N01	-5.07	1.32	1.42
2	B	701	JPP	C06-N01	-4.95	1.32	1.42
2	A	701	JPP	C19-S	-4.66	1.75	1.85
2	B	701	JPP	C19-S	-4.56	1.76	1.85

The worst 5 of 27 bond angle outliers are listed below:

Mol	Chain	Res	Type	Atoms	Z	Observed(°)	Ideal(°)
2	B	701	JPP	C20-N03-C21	-18.63	102.77	123.12

Continued on next page...

Continued from previous page...

Mol	Chain	Res	Type	Atoms	Z	Observed(°)	Ideal(°)
2	A	701	JPP	C20-N03-C21	-11.24	110.83	123.12
2	A	701	JPP	C05-CA-C21	9.05	128.50	108.16
2	A	701	JPP	CA-N04-C06	-7.85	106.33	121.17
2	B	701	JPP	CA-N04-C06	-6.20	109.45	121.17

All (2) chirality outliers are listed below:

Mol	Chain	Res	Type	Atom
2	A	701	JPP	C20
2	B	701	JPP	C20

5 of 15 torsion outliers are listed below:

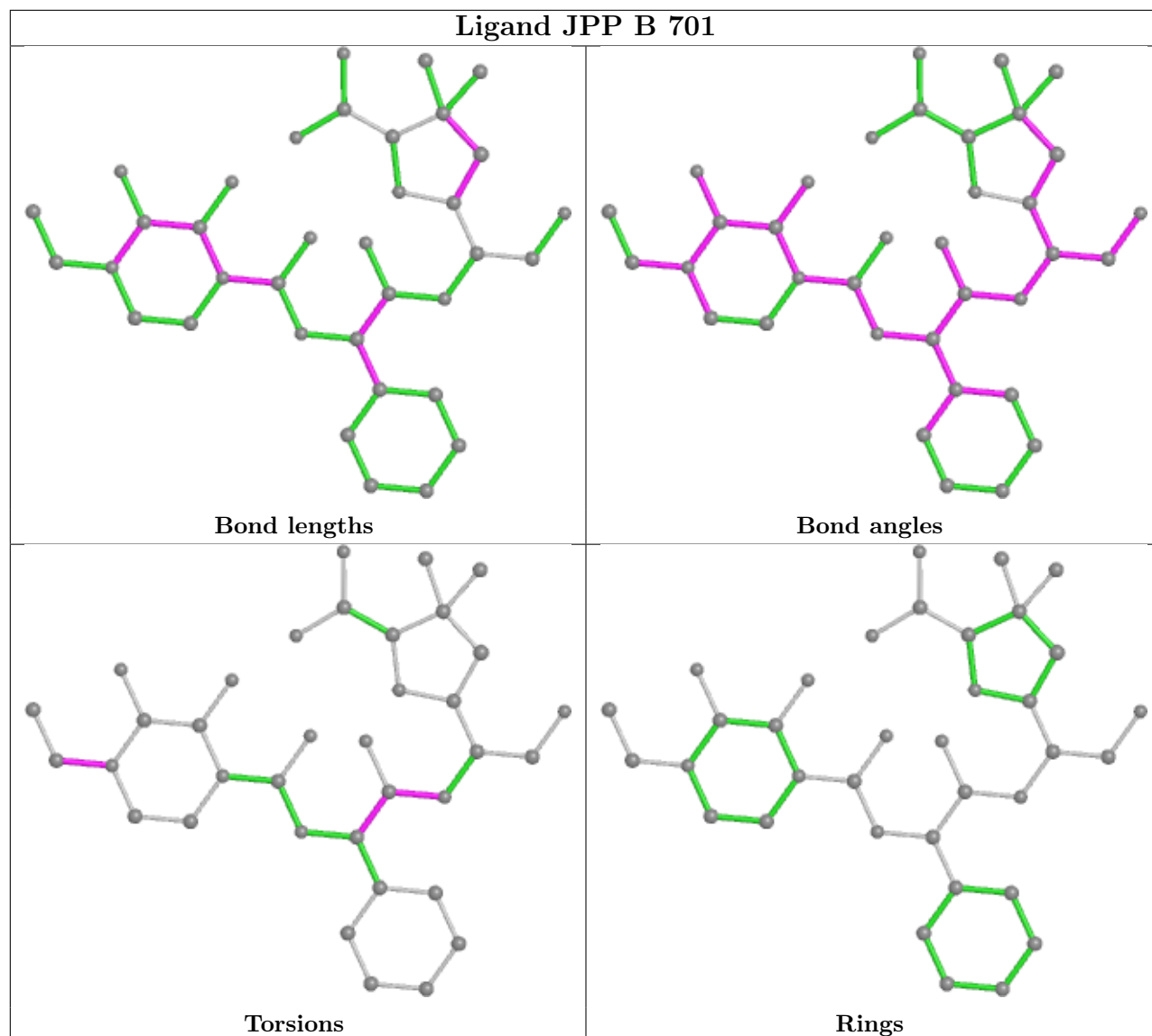
Mol	Chain	Res	Type	Atoms
2	A	701	JPP	C17-C20-N03-C21
2	A	701	JPP	C01-C20-N03-C21
2	A	701	JPP	O06-C21-N03-C20
2	A	701	JPP	CA-C21-N03-C20
2	A	701	JPP	O02-C04-C18-C19

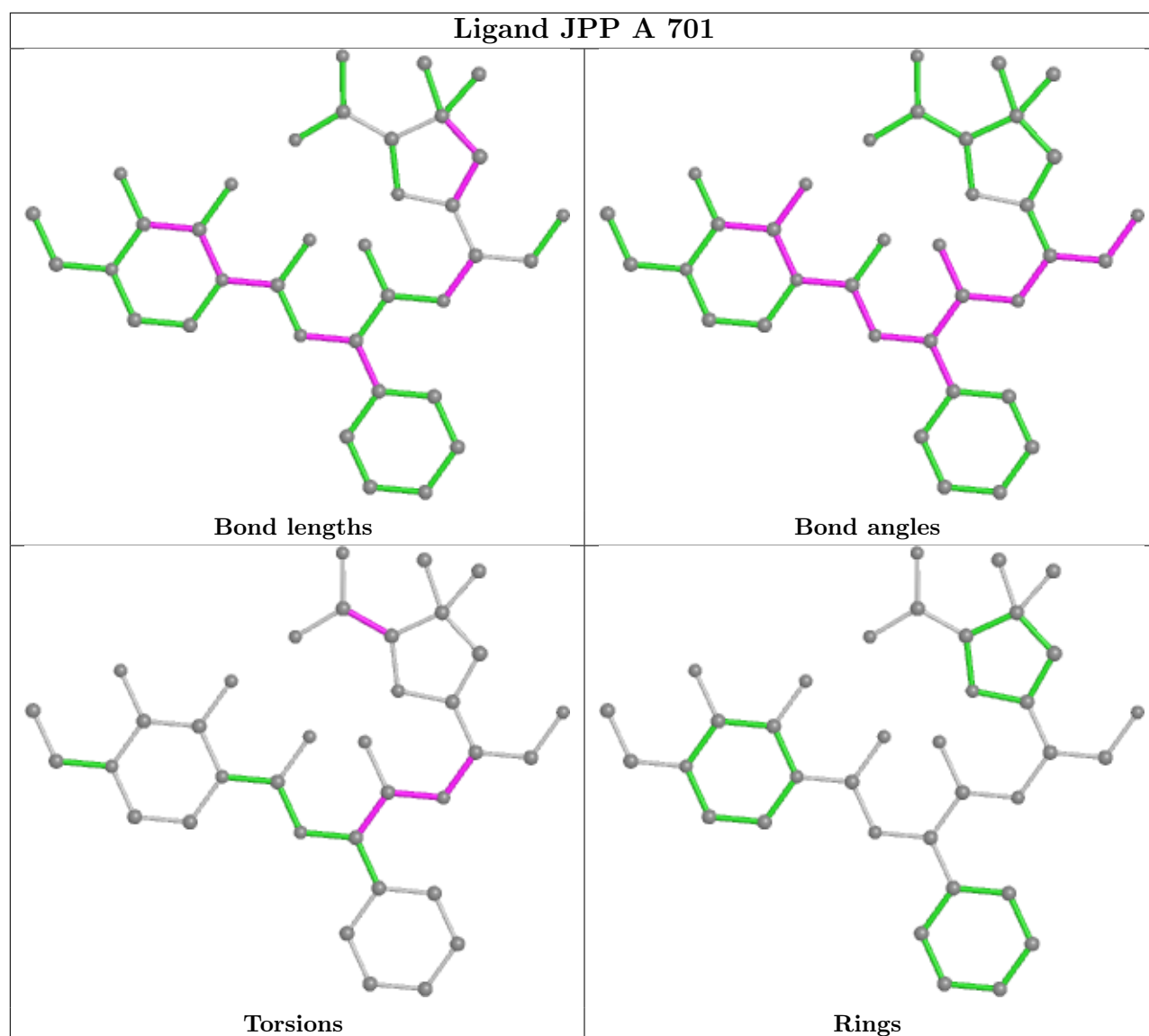
There are no ring outliers.

2 monomers are involved in 12 short contacts:

Mol	Chain	Res	Type	Clashes	Symm-Clashes
2	B	701	JPP	3	0
2	A	701	JPP	9	0

The following is a two-dimensional graphical depiction of Mogul quality analysis of bond lengths, bond angles, torsion angles, and ring geometry for all instances of the Ligand of Interest. In addition, ligands with molecular weight > 250 and outliers as shown on the validation Tables will also be included. For torsion angles, if less than 5% of the Mogul distribution of torsion angles is within 10 degrees of the torsion angle in question, then that torsion angle is considered an outlier. Any bond that is central to one or more torsion angles identified as an outlier by Mogul will be highlighted in the graph. For rings, the root-mean-square deviation (RMSD) between the ring in question and similar rings identified by Mogul is calculated over all ring torsion angles. If the average RMSD is greater than 60 degrees and the minimal RMSD between the ring in question and any Mogul-identified rings is also greater than 60 degrees, then that ring is considered an outlier. The outliers are highlighted in purple. The color gray indicates Mogul did not find sufficient equivalents in the CSD to analyse the geometry.





5.7 Other polymers [\(i\)](#)

There are no such residues in this entry.

5.8 Polymer linkage issues [\(i\)](#)

There are no chain breaks in this entry.

6 Fit of model and data [i](#)

6.1 Protein, DNA and RNA chains [i](#)

In the following table, the column labelled ‘#RSRZ > 2’ contains the number (and percentage) of RSRZ outliers, followed by percent RSRZ outliers for the chain as percentile scores relative to all X-ray entries and entries of similar resolution. The OWAB column contains the minimum, median, 95th percentile and maximum values of the occupancy-weighted average B-factor per residue. The column labelled ‘Q < 0.9’ lists the number of (and percentage) of residues with an average occupancy less than 0.9.

Mol	Chain	Analysed	<RSRZ>	#RSRZ>2	OWAB(Å ²)	Q<0.9
1	A	325/346 (93%)	-0.24	2 (0%) 89 91	3, 9, 21, 112	0
1	B	341/346 (98%)	-0.01	10 (2%) 51 59	7, 17, 41, 85	0
All	All	666/692 (96%)	-0.12	12 (1%) 68 74	3, 13, 37, 112	0

The worst 5 of 12 RSRZ outliers are listed below:

Mol	Chain	Res	Type	RSRZ
1	A	472	GLY	12.1
1	B	531	SER	5.1
1	B	530	GLY	3.5
1	B	532	SER	3.3
1	B	534	SER	3.1

6.2 Non-standard residues in protein, DNA, RNA chains [i](#)

There are no non-standard protein/DNA/RNA residues in this entry.

6.3 Carbohydrates [i](#)

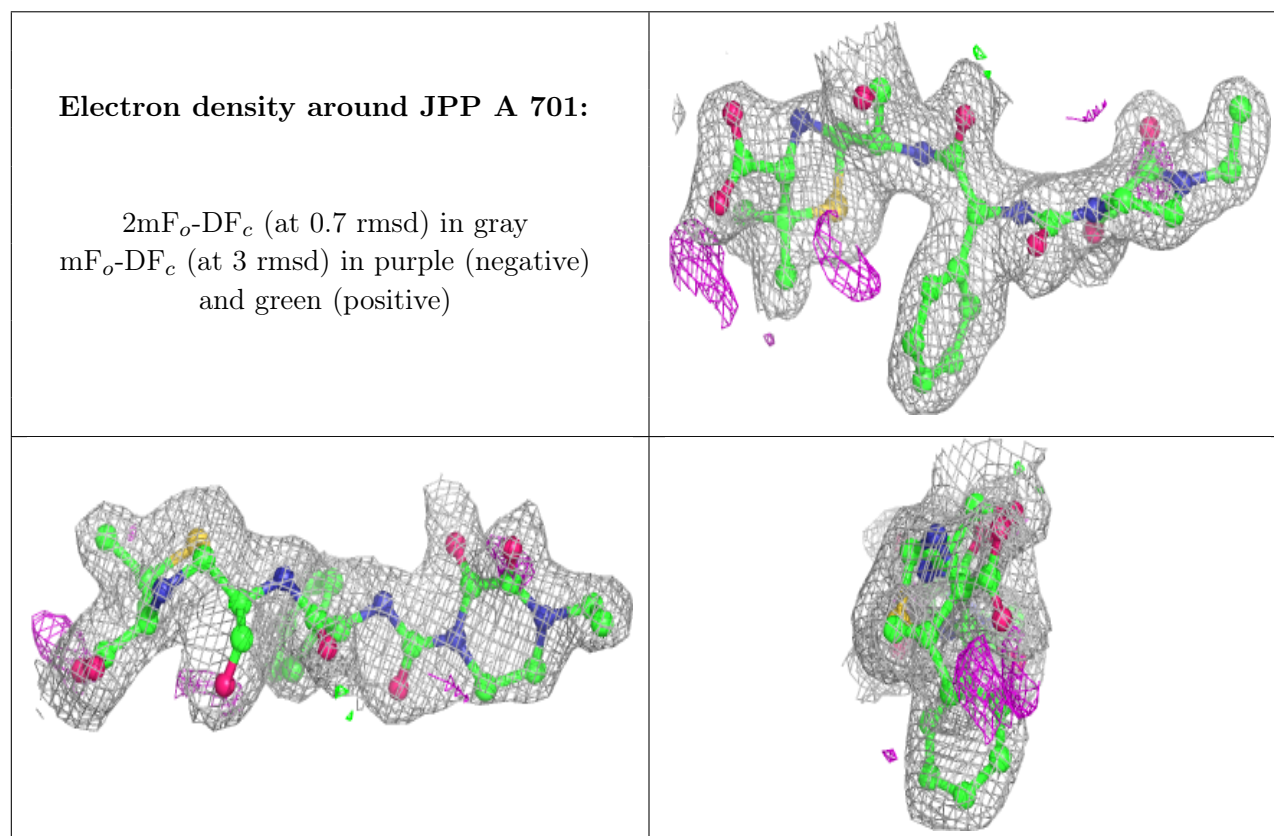
There are no monosaccharides in this entry.

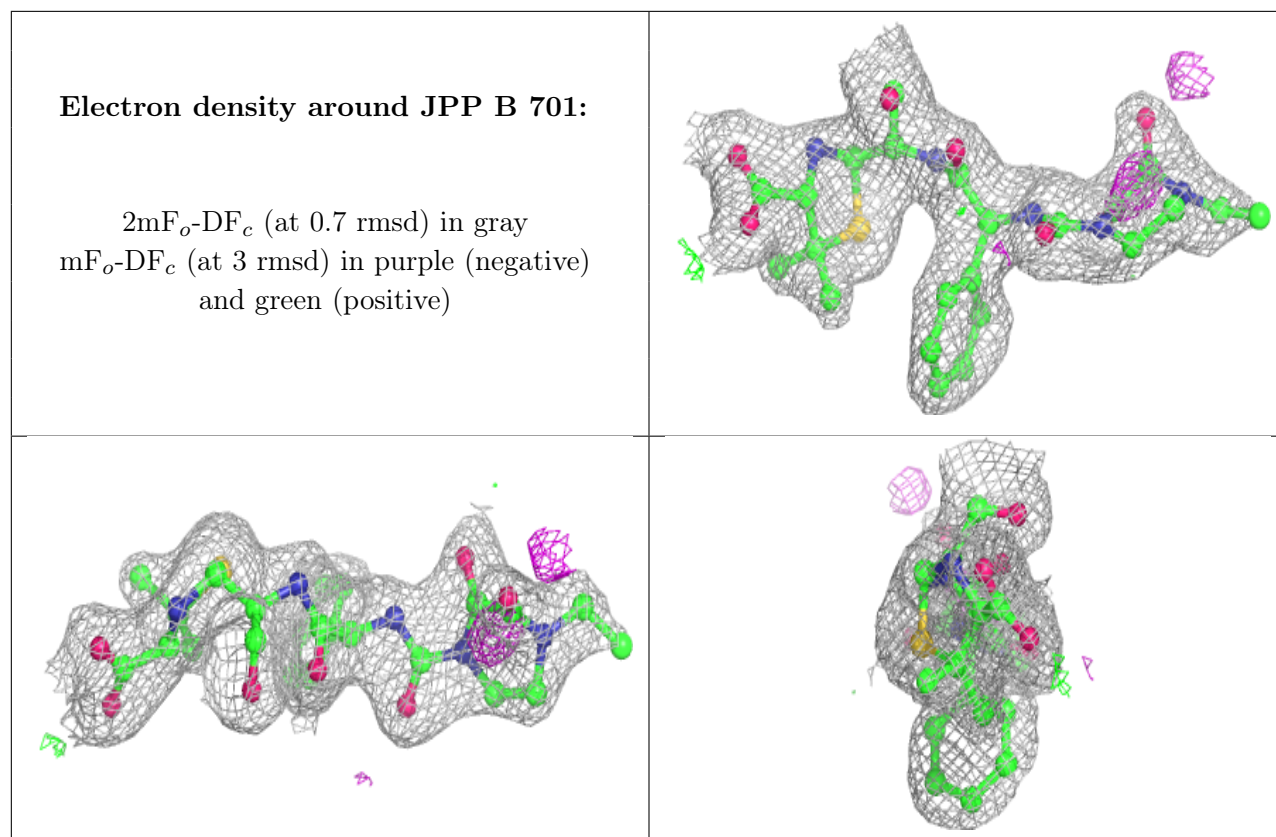
6.4 Ligands [i](#)

In the following table, the Atoms column lists the number of modelled atoms in the group and the number defined in the chemical component dictionary. The B-factors column lists the minimum, median, 95th percentile and maximum values of B factors of atoms in the group. The column labelled ‘Q < 0.9’ lists the number of atoms with occupancy less than 0.9.

Mol	Type	Chain	Res	Atoms	RSCC	RSR	B-factors(\AA^2)	Q<0.9
2	JPP	A	701	36/36	0.92	0.15	13,17,19,20	0
2	JPP	B	701	36/36	0.93	0.14	13,17,22,23	0

The following is a graphical depiction of the model fit to experimental electron density of all instances of the Ligand of Interest. In addition, ligands with molecular weight > 250 and outliers as shown on the geometry validation Tables will also be included. Each fit is shown from different orientation to approximate a three-dimensional view.





6.5 Other polymers [i](#)

There are no such residues in this entry.