



Full wwPDB X-ray Structure Validation Report ⓘ

Aug 21, 2020 – 01:48 AM BST

PDB ID : 2I03
Title : Crystal structure of human dipeptidyl peptidase 4 (DPP IV) with potent alkynyl cyanopyrrolidine (ABT-279)
Authors : Longenecker, K.L.; Madar, D.J.
Deposited on : 2006-08-09
Resolution : 2.40 Å(reported)

This is a Full wwPDB X-ray Structure Validation Report for a publicly released PDB entry.

We welcome your comments at validation@mail.wwpdb.org

A user guide is available at

<https://www.wwpdb.org/validation/2017/XrayValidationReportHelp>

with specific help available everywhere you see the ⓘ symbol.

The following versions of software and data (see [references ⓘ](#)) were used in the production of this report:

MolProbity : 4.02b-467
Mogul : 1.8.5 (274361), CSD as541be (2020)
Xtriage (Phenix) : 1.13
EDS : 2.13.1
buster-report : 1.1.7 (2018)
Percentile statistics : 20191225.v01 (using entries in the PDB archive December 25th 2019)
Refmac : 5.8.0158
CCP4 : 7.0.044 (Gargrove)
Ideal geometry (proteins) : Engh & Huber (2001)
Ideal geometry (DNA, RNA) : Parkinson et al. (1996)
Validation Pipeline (wwPDB-VP) : 2.13.1

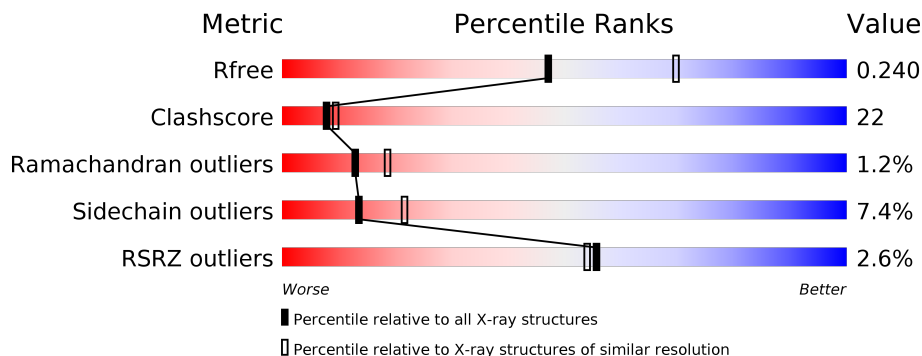
1 Overall quality at a glance

The following experimental techniques were used to determine the structure:

X-RAY DIFFRACTION

The reported resolution of this entry is 2.40 Å.

Percentile scores (ranging between 0-100) for global validation metrics of the entry are shown in the following graphic. The table shows the number of entries on which the scores are based.



Metric	Whole archive (#Entries)	Similar resolution (#Entries, resolution range(Å))
R_{free}	130704	3907 (2.40-2.40)
Clashscore	141614	4398 (2.40-2.40)
Ramachandran outliers	138981	4318 (2.40-2.40)
Sidechain outliers	138945	4319 (2.40-2.40)
RSRZ outliers	127900	3811 (2.40-2.40)

The table below summarises the geometric issues observed across the polymeric chains and their fit to the electron density. The red, orange, yellow and green segments on the lower bar indicate the fraction of residues that contain outliers for ≥ 3 , 2, 1 and 0 types of geometric quality criteria respectively. A grey segment represents the fraction of residues that are not modelled. The numeric value for each fraction is indicated below the corresponding segment, with a dot representing fractions $\leq 5\%$. The upper red bar (where present) indicates the fraction of residues that have poor fit to the electron density. The numeric value is given above the bar.

Mol	Chain	Length	Quality of chain
1	A	726	 2% (red), 65% (green), 30% (yellow), 2% (orange), 1% (grey)
1	B	726	 2% (red), 63% (green), 33% (yellow), 2% (orange), 1% (grey)
1	C	726	 2% (red), 60% (green), 36% (yellow), 2% (orange), 1% (grey)
1	D	726	 4% (red), 63% (green), 32% (yellow), 6% (orange), 1% (grey)

2 Entry composition [i](#)

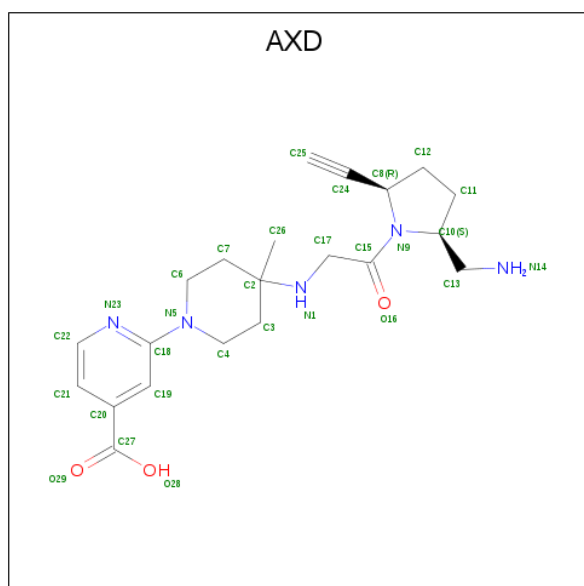
There are 3 unique types of molecules in this entry. The entry contains 26782 atoms, of which 0 are hydrogens and 0 are deuteriums.

In the tables below, the ZeroOcc column contains the number of atoms modelled with zero occupancy, the AltConf column contains the number of residues with at least one atom in alternate conformation and the Trace column contains the number of residues modelled with at most 2 atoms.

- Molecule 1 is a protein called Dipeptidyl peptidase 4.

Mol	Chain	Residues	Atoms					ZeroOcc	AltConf	Trace
			Total	C	N	O	S			
1	A	726	Total 5949	C 3816	N 980	O 1127	S 26	0	0	0
1	B	726	Total 5949	C 3816	N 980	O 1127	S 26	0	0	0
1	C	726	Total 5949	C 3816	N 980	O 1127	S 26	0	0	0
1	D	726	Total 5949	C 3816	N 980	O 1127	S 26	0	0	0

- Molecule 2 is 2-[4-({2-[(2S,5R)-2-(AMINOMETHYL)-5-ETHYNYLPYRROLIDIN-1-YL]-2-OXOETHYL}AMINO)-4-METHYLPYPERIDIN-1-YL]ISONICOTINIC ACID (three-letter code: AXD) (formula: C₂₁H₂₉N₅O₃).



Mol	Chain	Residues	Atoms				ZeroOcc	AltConf
			Total	C	N	O		
2	B	1	Total 29	C 21	N 5	O 3	0	0

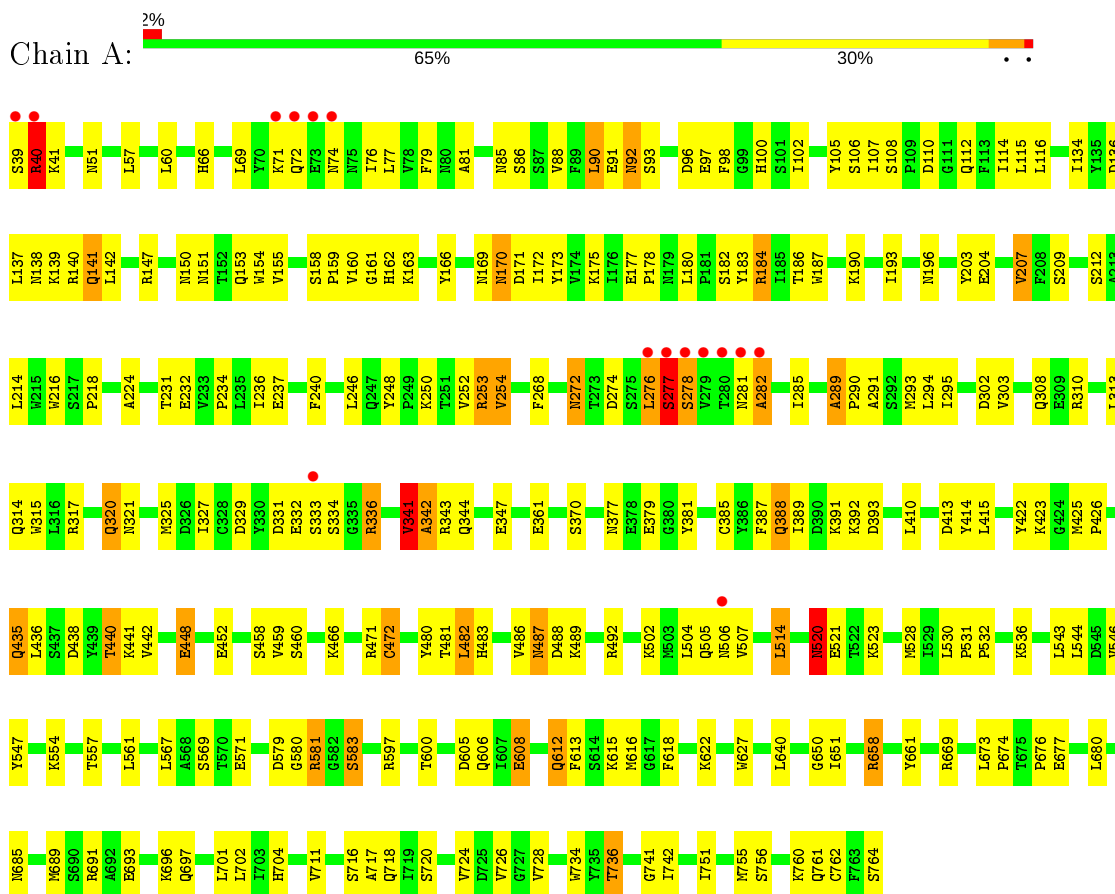
- Molecule 3 is water.

Mol	Chain	Residues	Atoms		ZeroOcc	AltConf
3	A	827	Total 827	O 827	0	0
3	B	763	Total 763	O 763	0	0
3	C	685	Total 685	O 685	0	0
3	D	682	Total 682	O 682	0	0

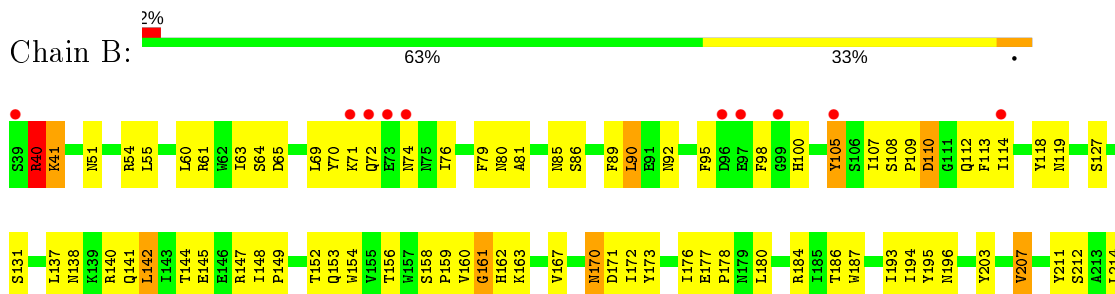
3 Residue-property plots

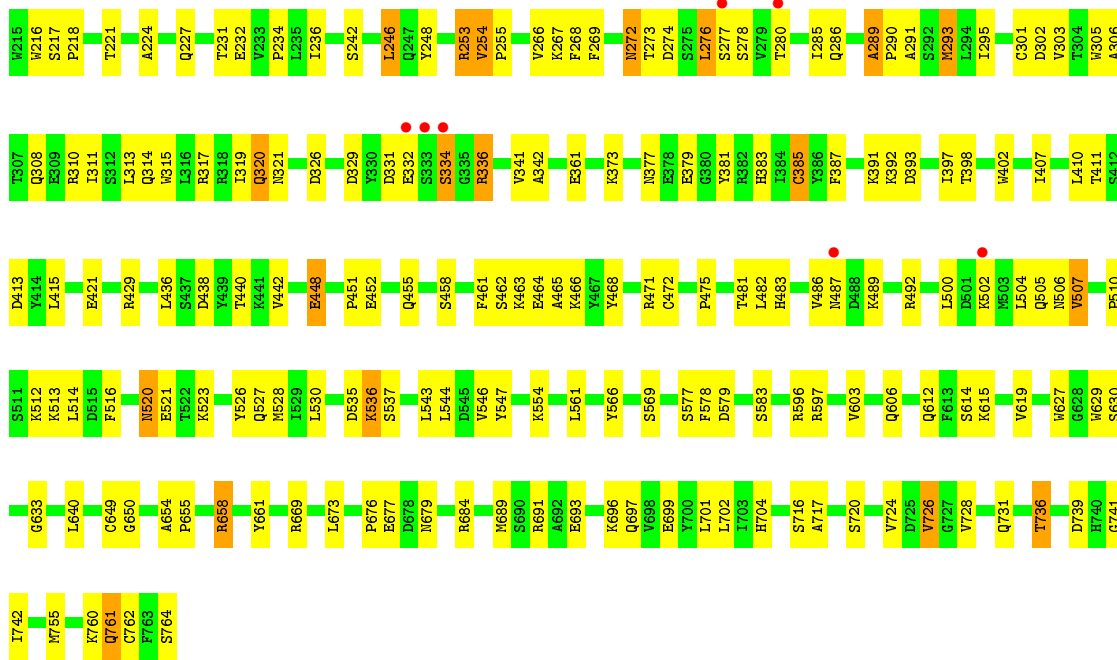
These plots are drawn for all protein, RNA, DNA and oligosaccharide chains in the entry. The first graphic for a chain summarises the proportions of the various outlier classes displayed in the second graphic. The second graphic shows the sequence view annotated by issues in geometry and electron density. Residues are color-coded according to the number of geometric quality criteria for which they contain at least one outlier: green = 0, yellow = 1, orange = 2 and red = 3 or more. A red dot above a residue indicates a poor fit to the electron density ($RSRZ > 2$). Stretches of 2 or more consecutive residues without any outlier are shown as a green connector. Residues present in the sample, but not in the model, are shown in grey.

• Molecule 1: Dipeptidyl peptidase 4

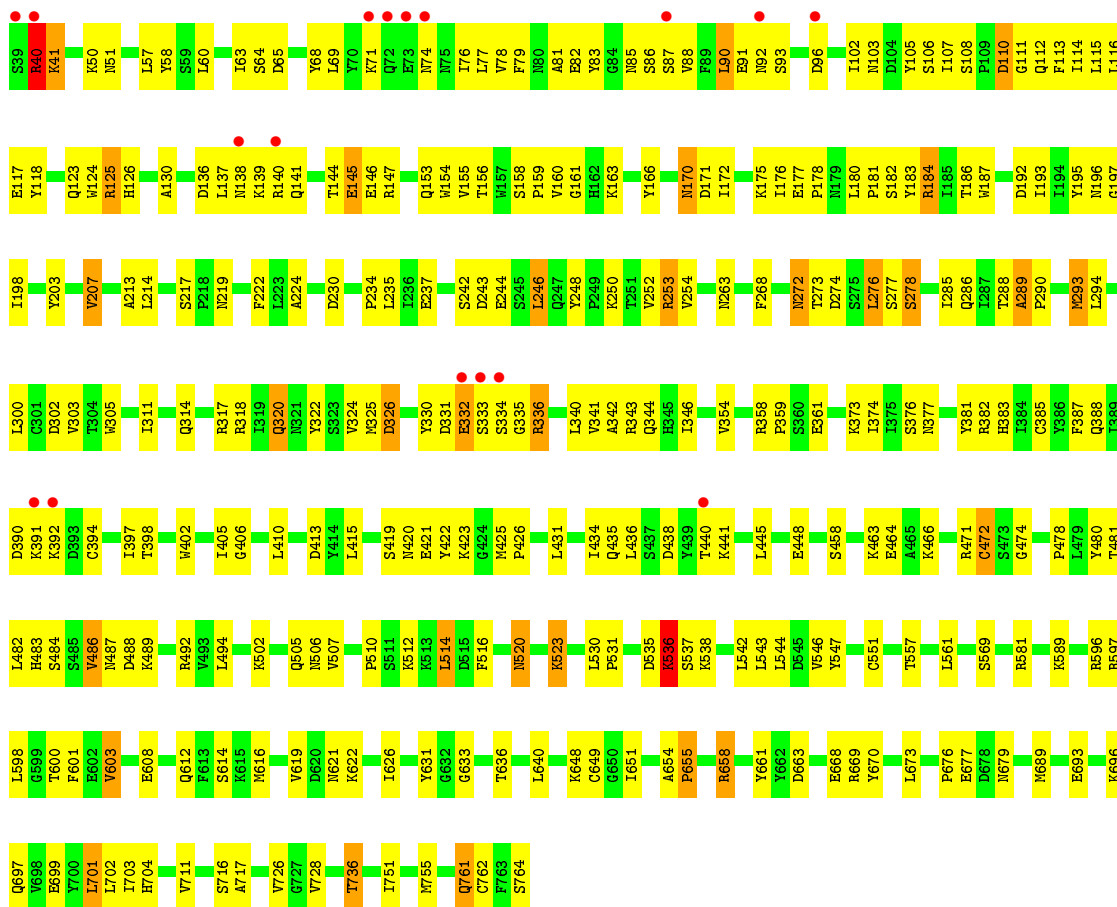


• Molecule 1: Dipeptidyl peptidase 4

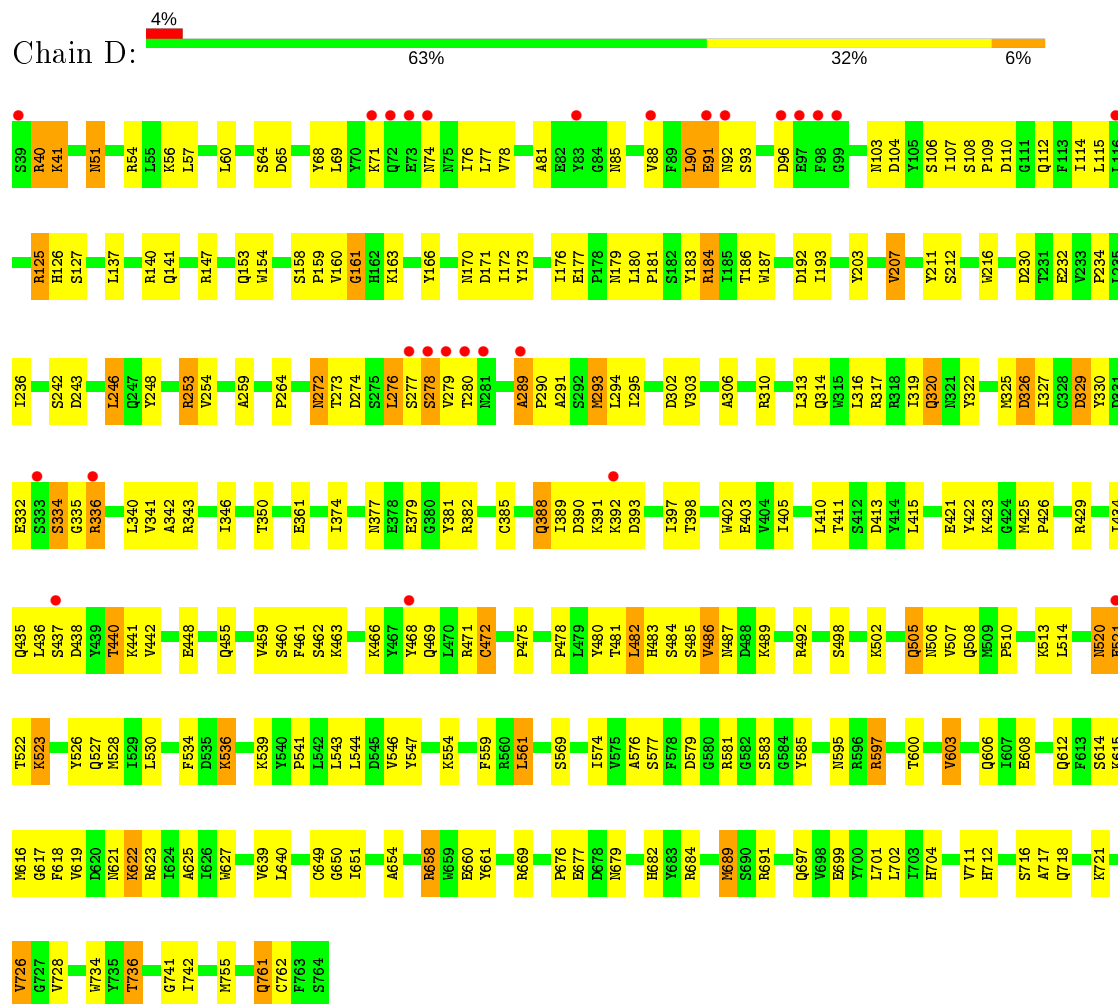




● Molecule 1: Dipeptidyl peptidase 4



- Molecule 1: Dipeptidyl peptidase 4



4 Data and refinement statistics

Property	Value	Source
Space group	P 1 21 1	Depositor
Cell constants a, b, c, α , β , γ	120.25Å 126.99Å 127.26Å 90.00° 96.56° 90.00°	Depositor
Resolution (Å)	20.00 – 2.40 20.00 – 2.40	Depositor EDS
% Data completeness (in resolution range)	96.9 (20.00-2.40) 97.0 (20.00-2.40)	Depositor EDS
R_{merge}	0.12	Depositor
R_{sym}	(Not available)	Depositor
$\langle I/\sigma(I) \rangle$ ¹	1.82 (at 2.41Å)	Xtrriage
Refinement program	CNS	Depositor
R, R_{free}	0.179 , 0.245 0.174 , 0.240	Depositor DCC
R_{free} test set	7166 reflections (5.00%)	wwPDB-VP
Wilson B-factor (Å ²)	43.0	Xtrriage
Anisotropy	0.547	Xtrriage
Bulk solvent k_{sol} (e/Å ³), B_{sol} (Å ²)	0.31 , 73.7	EDS
L-test for twinning ²	$\langle L \rangle = 0.49$, $\langle L^2 \rangle = 0.33$	Xtrriage
Estimated twinning fraction	No twinning to report.	Xtrriage
F_o, F_c correlation	0.96	EDS
Total number of atoms	26782	wwPDB-VP
Average B, all atoms (Å ²)	50.0	wwPDB-VP

Xtrriage's analysis on translational NCS is as follows: *The largest off-origin peak in the Patterson function is 2.61% of the height of the origin peak. No significant pseudotranslation is detected.*

¹Intensities estimated from amplitudes.

²Theoretical values of $\langle |L| \rangle$, $\langle L^2 \rangle$ for acentric reflections are 0.5, 0.333 respectively for untwinned datasets, and 0.375, 0.2 for perfectly twinned datasets.

5 Model quality [i](#)

5.1 Standard geometry [i](#)

Bond lengths and bond angles in the following residue types are not validated in this section: AXD

The Z score for a bond length (or angle) is the number of standard deviations the observed value is removed from the expected value. A bond length (or angle) with $|Z| > 5$ is considered an outlier worth inspection. RMSZ is the root-mean-square of all Z scores of the bond lengths (or angles).

Mol	Chain	Bond lengths		Bond angles	
		RMSZ	# Z >5	RMSZ	# Z >5
1	A	0.36	0/6120	0.65	2/8321 (0.0%)
1	B	0.38	1/6120 (0.0%)	0.64	0/8321
1	C	0.35	0/6120	0.62	1/8321 (0.0%)
1	D	0.35	0/6120	0.63	0/8321
All	All	0.36	1/24480 (0.0%)	0.64	3/33284 (0.0%)

All (1) bond length outliers are listed below:

Mol	Chain	Res	Type	Atoms	Z	Observed(Å)	Ideal(Å)
1	B	630	SER	C-O	8.70	1.39	1.23

All (3) bond angle outliers are listed below:

Mol	Chain	Res	Type	Atoms	Z	Observed(°)	Ideal(°)
1	A	341	VAL	N-CA-C	-6.16	94.36	111.00
1	A	388	GLN	N-CA-C	-5.45	96.30	111.00
1	C	300	LEU	N-CA-C	-5.08	97.28	111.00

There are no chirality outliers.

There are no planarity outliers.

5.2 Too-close contacts [i](#)

In the following table, the Non-H and H(model) columns list the number of non-hydrogen atoms and hydrogen atoms in the chain respectively. The H(added) column lists the number of hydrogen atoms added and optimized by MolProbity. The Clashes column lists the number of clashes within the asymmetric unit, whereas Symm-Clashes lists symmetry related clashes.

Mol	Chain	Non-H	H(model)	H(added)	Clashes	Symm-Clashes
1	A	5949	0	5667	249	0
1	B	5949	0	5666	230	0
1	C	5949	0	5667	266	0
1	D	5949	0	5667	274	0
2	B	29	0	26	0	0
3	A	827	0	0	47	0
3	B	763	0	0	40	0
3	C	685	0	0	42	0
3	D	682	0	0	49	0
All	All	26782	0	22693	1003	0

The all-atom clashscore is defined as the number of clashes found per 1000 atoms (including hydrogen atoms). The all-atom clashscore for this structure is 22.

All (1003) close contacts within the same asymmetric unit are listed below, sorted by their clash magnitude.

Atom-1	Atom-2	Interatomic distance (Å)	Clash overlap (Å)
1:D:289:ALA:HB1	1:D:290:PRO:HA	1.29	1.15
1:B:193:ILE:HG22	1:B:194:ILE:HD12	1.34	1.09
1:C:289:ALA:HB1	1:C:290:PRO:HA	1.29	1.09
1:D:334:SER:HB3	1:D:336:ARG:HE	1.14	1.08
1:B:289:ALA:HB1	1:B:290:PRO:HA	1.36	1.07
1:C:651:ILE:HG21	1:C:755:MET:HE3	1.41	1.02
1:D:114:ILE:HD11	1:D:137:LEU:HD21	1.40	1.00
1:A:289:ALA:HB1	1:A:290:PRO:HA	1.43	0.97
1:A:253:ARG:HH22	1:B:253:ARG:HH22	1.01	0.93
1:A:289:ALA:HB1	1:A:290:PRO:CA	1.98	0.93
1:A:505:GLN:HB3	3:A:1227:HOH:O	1.69	0.92
1:A:172:ILE:H	1:A:186:THR:HG22	1.35	0.92
1:A:76:ILE:HD12	1:A:90:LEU:HD11	1.53	0.91
1:A:762:CYS:HB2	3:A:880:HOH:O	1.71	0.90
1:B:334:SER:HB3	1:B:336:ARG:HE	1.36	0.89
1:D:334:SER:HB3	1:D:336:ARG:NE	1.86	0.88
1:B:289:ALA:HB1	1:B:290:PRO:CA	2.03	0.88
1:A:651:ILE:HG21	1:A:755:MET:HE2	1.55	0.88
1:D:172:ILE:H	1:D:186:THR:HG22	1.36	0.88
1:B:76:ILE:HD12	1:B:90:LEU:HD11	1.56	0.88
1:D:621:ASN:HB3	3:D:912:HOH:O	1.75	0.87
1:A:276:LEU:HB3	3:A:1062:HOH:O	1.74	0.86
1:C:102:ILE:HD13	1:C:116:LEU:HD22	1.58	0.86
1:C:111:GLY:O	1:C:137:LEU:HD12	1.76	0.85
1:B:138:ASN:HA	3:B:2063:HOH:O	1.76	0.84

Continued on next page...

Continued from previous page...

Atom-1	Atom-2	Interatomic distance (Å)	Clash overlap (Å)
1:A:253:ARG:NH2	1:B:253:ARG:HH22	1.75	0.84
1:C:717:ALA:O	1:D:736:THR:HG21	1.77	0.84
1:D:289:ALA:HB1	1:D:290:PRO:CA	2.07	0.84
1:C:172:ILE:H	1:C:186:THR:HG22	1.41	0.84
1:D:614:SER:HB2	3:D:912:HOH:O	1.77	0.83
1:D:40:ARG:HA	3:D:850:HOH:O	1.77	0.83
1:A:438:ASP:OD1	1:A:440:THR:HB	1.79	0.82
1:A:253:ARG:HH22	1:B:253:ARG:NH2	1.75	0.82
1:C:105:TYR:HB2	3:C:861:HOH:O	1.79	0.82
1:B:60:LEU:HB3	3:B:2373:HOH:O	1.78	0.82
1:C:171:ASP:OD1	1:C:186:THR:HG23	1.79	0.82
1:D:276:LEU:HD22	1:D:276:LEU:H	1.45	0.82
1:D:397:ILE:HD12	1:D:434:ILE:HD13	1.63	0.81
1:D:69:LEU:HD11	1:D:107:ILE:HD12	1.63	0.81
1:A:717:ALA:O	1:B:736:THR:HG21	1.80	0.80
1:C:289:ALA:HB1	1:C:290:PRO:CA	2.09	0.80
1:B:176:ILE:HD11	1:B:276:LEU:HD21	1.62	0.80
1:A:361:GLU:HB3	3:A:820:HOH:O	1.80	0.80
1:C:293:MET:CE	1:C:317:ARG:HG3	2.12	0.80
1:D:160:VAL:HG23	1:D:161:GLY:H	1.47	0.79
1:C:736:THR:HG21	1:D:717:ALA:O	1.83	0.79
1:B:410:LEU:HD13	1:B:415:LEU:HD23	1.65	0.79
1:A:177:GLU:HB2	1:A:180:LEU:HD22	1.65	0.79
1:B:172:ILE:H	1:B:186:THR:HG22	1.47	0.78
1:A:276:LEU:H	1:A:276:LEU:HD23	1.47	0.78
1:B:171:ASP:OD1	1:B:186:THR:HG23	1.84	0.78
1:C:293:MET:HE2	1:C:317:ARG:HG3	1.65	0.78
1:A:392:LYS:HB3	3:A:1077:HOH:O	1.84	0.78
1:A:697:GLN:HG3	3:A:1250:HOH:O	1.81	0.78
1:B:160:VAL:HG23	1:B:161:GLY:H	1.47	0.78
1:B:762:CYS:HB2	3:B:1776:HOH:O	1.84	0.78
1:B:334:SER:HB3	1:B:336:ARG:NE	1.99	0.77
1:A:153:GLN:HE22	1:A:170:ASN:ND2	1.83	0.77
1:D:289:ALA:HB2	3:D:1388:HOH:O	1.85	0.77
1:C:410:LEU:HD13	1:C:415:LEU:HD23	1.65	0.76
1:D:676:PRO:HG2	1:D:677:GLU:OE2	1.85	0.76
1:A:487:ASN:HB2	3:A:1369:HOH:O	1.84	0.76
1:A:347:GLU:HG2	3:A:1566:HOH:O	1.83	0.76
1:A:140:ARG:HG2	1:A:140:ARG:HH11	1.50	0.75
1:D:272:ASN:ND2	1:D:274:ASP:H	1.84	0.75
1:A:334:SER:HB3	1:A:336:ARG:NE	2.02	0.74

Continued on next page...

Continued from previous page...

Atom-1	Atom-2	Interatomic distance (Å)	Clash overlap (Å)
1:A:502:LYS:O	1:A:505:GLN:HG2	1.87	0.74
1:C:334:SER:HB3	1:C:336:ARG:HE	1.50	0.74
1:D:114:ILE:CD1	1:D:137:LEU:HD21	2.17	0.74
1:C:184:ARG:NH1	1:C:187:TRP:HA	2.03	0.73
1:D:289:ALA:HA	1:D:294:LEU:HD11	1.68	0.73
1:A:289:ALA:CB	1:A:290:PRO:HA	2.18	0.73
1:A:71:LYS:NZ	1:A:105:TYR:HB2	2.03	0.73
1:C:486:VAL:HG13	3:C:787:HOH:O	1.88	0.73
1:D:77:LEU:HD23	1:D:88:VAL:HA	1.71	0.73
1:A:341:VAL:O	1:A:342:ALA:CB	2.36	0.73
1:B:320:GLN:OE1	1:B:669:ARG:HD3	1.88	0.73
1:D:184:ARG:NH1	1:D:187:TRP:HA	2.04	0.73
1:A:293:MET:HE1	1:A:317:ARG:HG3	1.71	0.73
1:C:597:ARG:HG3	1:C:600:THR:HG21	1.70	0.72
1:A:140:ARG:HD2	3:A:1042:HOH:O	1.87	0.72
1:B:341:VAL:O	1:B:342:ALA:HB3	1.89	0.72
1:C:106:SER:HB3	1:C:115:LEU:HB3	1.71	0.72
1:A:410:LEU:HD13	1:A:415:LEU:HD23	1.72	0.72
1:C:272:ASN:ND2	1:C:274:ASP:H	1.89	0.71
1:A:171:ASP:OD1	1:A:186:THR:HG23	1.90	0.71
1:A:203:TYR:HA	1:A:207:VAL:HG13	1.73	0.71
1:A:597:ARG:HG3	1:A:600:THR:HG21	1.74	0.70
1:A:71:LYS:HG2	1:A:76:ILE:HG12	1.73	0.70
1:B:596:ARG:O	1:B:597:ARG:HD3	1.92	0.70
1:D:158:SER:HB3	1:D:163:LYS:HB2	1.74	0.70
1:D:489:LYS:HB3	1:D:489:LYS:NZ	2.06	0.70
1:B:640:LEU:HD11	1:B:650:GLY:HA3	1.74	0.69
1:A:102:ILE:HD13	1:A:116:LEU:HD22	1.73	0.69
1:B:289:ALA:CB	1:B:290:PRO:HA	2.18	0.69
1:C:184:ARG:HH11	1:C:187:TRP:HA	1.56	0.69
1:B:114:ILE:HD11	1:B:137:LEU:HD21	1.75	0.69
1:D:177:GLU:HB2	1:D:180:LEU:HD22	1.74	0.69
1:A:448:GLU:HG3	3:A:1524:HOH:O	1.92	0.69
1:C:88:VAL:HG11	1:C:91:GLU:OE2	1.93	0.69
1:D:320:GLN:OE1	1:D:669:ARG:HD3	1.93	0.69
1:C:71:LYS:HE2	3:C:1167:HOH:O	1.92	0.69
1:A:108:SER:C	1:A:110:ASP:H	1.94	0.68
1:B:697:GLN:HG3	3:B:2070:HOH:O	1.94	0.68
1:B:160:VAL:HG23	1:B:161:GLY:N	2.09	0.68
1:D:471:ARG:HG2	1:D:480:TYR:CD2	2.28	0.68
1:D:640:LEU:HD11	1:D:650:GLY:HA3	1.74	0.68

Continued on next page...

Continued from previous page...

Atom-1	Atom-2	Interatomic distance (Å)	Clash overlap (Å)
1:A:334:SER:HB3	1:A:336:ARG:HE	1.57	0.68
1:C:289:ALA:CB	1:C:290:PRO:HA	2.16	0.68
1:C:621:ASN:HB3	3:C:1063:HOH:O	1.92	0.68
1:D:615:LYS:HB2	3:D:1373:HOH:O	1.93	0.68
1:A:92:ASN:HD22	1:A:93:SER:N	1.92	0.68
1:A:651:ILE:HG21	1:A:755:MET:CE	2.24	0.67
1:C:147:ARG:HB2	3:C:1398:HOH:O	1.93	0.67
1:A:334:SER:HB3	1:A:336:ARG:CD	2.24	0.67
1:C:331:ASP:HB3	1:C:334:SER:HB2	1.76	0.67
1:C:224:ALA:HB1	1:C:268:PHE:CZ	2.30	0.67
1:D:153:GLN:HE22	1:D:170:ASN:ND2	1.92	0.67
1:C:76:ILE:HD12	1:C:90:LEU:HD11	1.75	0.67
1:A:190:LYS:HG2	1:A:193:ILE:HB	1.77	0.66
1:A:170:ASN:N	1:A:170:ASN:HD22	1.94	0.66
1:D:410:LEU:HD13	1:D:415:LEU:HD23	1.77	0.66
1:B:291:ALA:O	1:B:295:ILE:HG23	1.96	0.66
1:B:272:ASN:HD22	1:B:274:ASP:H	1.41	0.66
1:C:487:ASN:HB2	3:C:787:HOH:O	1.95	0.66
1:C:697:GLN:HG3	3:C:1253:HOH:O	1.96	0.66
1:C:77:LEU:HD23	1:C:88:VAL:HA	1.78	0.66
1:D:486:VAL:HG13	1:D:487:ASN:H	1.59	0.66
1:D:56:LYS:HD2	3:D:870:HOH:O	1.96	0.66
1:B:544:LEU:HD21	1:B:606:GLN:HG3	1.78	0.66
1:A:579:ASP:HB3	1:A:583:SER:OG	1.97	0.65
1:D:203:TYR:HA	1:D:207:VAL:HG13	1.77	0.65
1:C:217:SER:HB3	1:C:222:PHE:HB2	1.78	0.65
1:C:377:ASN:HB2	1:C:381:TYR:O	1.97	0.65
1:A:289:ALA:HB2	3:A:1403:HOH:O	1.96	0.65
1:B:487:ASN:HB2	3:B:1728:HOH:O	1.95	0.65
1:C:219:ASN:ND2	3:C:870:HOH:O	2.28	0.65
1:D:290:PRO:HG3	1:D:326:ASP:OD2	1.97	0.65
1:C:502:LYS:O	1:C:505:GLN:HG2	1.96	0.65
1:A:472:CYS:SG	3:A:905:HOH:O	2.55	0.65
1:C:176:ILE:HG22	1:C:177:GLU:HG2	1.79	0.65
1:B:502:LYS:O	1:B:505:GLN:HG2	1.97	0.65
1:C:141:GLN:HA	3:C:1325:HOH:O	1.95	0.65
1:D:160:VAL:HG23	1:D:161:GLY:N	2.11	0.65
1:A:489:LYS:HB3	1:A:489:LYS:NZ	2.11	0.65
1:C:243:ASP:HB3	3:C:906:HOH:O	1.97	0.65
1:A:281:ASN:HB2	3:A:1529:HOH:O	1.95	0.65
1:D:505:GLN:HB3	3:D:1281:HOH:O	1.97	0.65

Continued on next page...

Continued from previous page...

Atom-1	Atom-2	Interatomic distance (Å)	Clash overlap (Å)
1:B:89:PHE:CE1	1:B:107:ILE:HD13	2.32	0.65
1:C:183:TYR:HE1	1:C:277:SER:O	1.80	0.65
1:C:203:TYR:HA	1:C:207:VAL:HG13	1.78	0.65
1:C:334:SER:HB3	1:C:336:ARG:NE	2.12	0.65
1:C:57:LEU:HD21	3:C:1295:HOH:O	1.96	0.64
1:B:726:VAL:CG1	1:B:728:VAL:HG23	2.28	0.64
1:B:76:ILE:HB	1:B:90:LEU:CD1	2.26	0.64
1:C:272:ASN:HD22	1:C:274:ASP:H	1.45	0.64
1:B:272:ASN:ND2	1:B:274:ASP:H	1.95	0.64
1:C:361:GLU:HB3	3:C:1133:HOH:O	1.97	0.64
1:D:704:HIS:HD2	1:D:716:SER:OG	1.80	0.64
1:C:178:PRO:HG3	3:C:1425:HOH:O	1.97	0.63
1:C:290:PRO:HG3	1:C:326:ASP:OD2	1.98	0.63
1:D:361:GLU:HB3	3:D:836:HOH:O	1.97	0.63
1:A:184:ARG:HD3	1:A:186:THR:O	1.97	0.63
1:B:140:ARG:HG2	1:B:140:ARG:HH11	1.62	0.63
1:A:736:THR:HG21	1:B:717:ALA:O	1.97	0.63
1:B:177:GLU:HB2	1:B:180:LEU:HD13	1.80	0.63
1:D:71:LYS:HE2	3:D:963:HOH:O	1.97	0.63
1:B:452:GLU:HG2	3:B:2056:HOH:O	1.97	0.63
1:B:336:ARG:HB2	3:B:2390:HOH:O	1.97	0.63
1:C:314:GLN:HE22	1:C:373:LYS:NZ	1.97	0.63
1:D:183:TYR:CD2	1:D:276:LEU:HG	2.34	0.63
1:D:340:LEU:O	1:D:343:ARG:HB3	1.98	0.63
1:D:377:ASN:HB3	1:D:379:GLU:H	1.64	0.63
1:D:614:SER:HA	1:D:619:VAL:HB	1.81	0.63
1:D:173:TYR:CE2	1:D:184:ARG:HG3	2.34	0.62
1:A:289:ALA:HB1	1:A:290:PRO:C	2.19	0.62
1:B:184:ARG:HD3	1:B:186:THR:O	1.99	0.62
1:A:704:HIS:HD2	1:A:716:SER:OG	1.83	0.62
1:B:554:LYS:HG2	3:B:1985:HOH:O	2.00	0.62
1:B:218:PRO:HB2	1:B:308:GLN:NE2	2.15	0.62
1:A:726:VAL:HG13	1:A:728:VAL:HG23	1.82	0.61
1:B:535:ASP:OD1	1:B:537:SER:HB3	1.98	0.61
1:D:69:LEU:CD1	1:D:107:ILE:HD12	2.29	0.61
1:A:234:PRO:HB2	1:B:248:TYR:CZ	2.35	0.61
1:B:676:PRO:HG2	1:B:677:GLU:OE2	2.01	0.61
1:C:286:GLN:NE2	1:C:288:THR:HG22	2.15	0.61
1:C:431:LEU:HG	1:C:445:LEU:HD12	1.82	0.61
1:A:331:ASP:HB3	1:A:334:SER:HB2	1.82	0.61
1:A:175:LYS:NZ	1:A:182:SER:HB2	2.15	0.61

Continued on next page...

Continued from previous page...

Atom-1	Atom-2	Interatomic distance (Å)	Clash overlap (Å)
1:A:289:ALA:CB	1:A:290:PRO:CA	2.73	0.61
1:D:544:LEU:HD12	1:D:576:ALA:O	2.01	0.61
1:D:547:TYR:HB3	3:D:1434:HOH:O	1.99	0.61
1:B:193:ILE:HG22	1:B:194:ILE:CD1	2.22	0.61
1:A:71:LYS:HZ1	1:A:105:TYR:HB2	1.66	0.61
1:C:405:ILE:HG12	1:C:419:SER:HA	1.82	0.61
1:B:61:ARG:NH2	1:B:63:ILE:HG22	2.15	0.61
1:C:113:PHE:CE2	1:C:178:PRO:HG2	2.36	0.61
1:C:658:ARG:HG2	1:C:661:TYR:CE2	2.36	0.61
1:D:279:VAL:HB	3:D:973:HOH:O	2.01	0.61
1:D:422:TYR:CE2	1:D:423:LYS:HD3	2.35	0.61
1:A:214:LEU:HG	3:A:1054:HOH:O	2.01	0.60
1:A:276:LEU:HD21	3:A:1022:HOH:O	2.00	0.60
1:A:333:SER:HB3	3:A:962:HOH:O	2.00	0.60
1:B:158:SER:HB3	1:B:163:LYS:HB2	1.83	0.60
1:B:361:GLU:HB3	3:B:1644:HOH:O	2.00	0.60
1:A:377:ASN:HB2	1:A:381:TYR:O	2.02	0.60
1:A:435:GLN:HE22	1:A:441:LYS:NZ	1.99	0.60
1:B:81:ALA:O	1:B:492:ARG:NH2	2.33	0.60
1:D:57:LEU:HD23	3:D:1427:HOH:O	2.01	0.60
1:A:276:LEU:CD2	1:A:276:LEU:H	2.15	0.60
1:D:459:VAL:HG22	1:D:460:SER:N	2.17	0.60
1:D:486:VAL:HG13	1:D:487:ASN:N	2.17	0.59
1:B:114:ILE:CD1	1:B:137:LEU:HD21	2.32	0.59
1:B:392:LYS:HG3	1:B:393:ASP:H	1.67	0.59
1:C:263:ASN:ND2	1:C:318:ARG:CZ	2.65	0.59
1:D:438:ASP:OD2	1:D:441:LYS:HG3	2.02	0.59
1:D:597:ARG:NH1	1:D:682:HIS:HB2	2.17	0.59
1:D:697:GLN:HG3	3:D:1015:HOH:O	2.02	0.59
1:D:726:VAL:CG1	1:D:728:VAL:HG23	2.32	0.59
1:D:293:MET:CE	1:D:317:ARG:HG3	2.33	0.59
1:A:92:ASN:ND2	1:A:93:SER:N	2.51	0.59
1:A:481:THR:OG1	1:A:483:HIS:HE1	1.85	0.59
1:C:608:GLU:O	1:C:612:GLN:HG2	2.02	0.59
1:C:184:ARG:HD3	1:C:186:THR:O	2.02	0.59
1:A:640:LEU:HD11	1:A:650:GLY:HA3	1.84	0.58
1:B:108:SER:C	1:B:110:ASP:H	2.05	0.58
1:D:388:GLN:HB2	1:D:391:LYS:HB2	1.85	0.58
1:A:544:LEU:HD21	1:A:606:GLN:HG3	1.85	0.58
1:A:76:ILE:HB	1:A:90:LEU:CD1	2.33	0.58
1:D:510:PRO:HD3	1:D:569:SER:HB2	1.83	0.58

Continued on next page...

Continued from previous page...

Atom-1	Atom-2	Interatomic distance (Å)	Clash overlap (Å)
1:A:506:ASN:HB2	3:A:1012:HOH:O	2.04	0.58
1:A:77:LEU:HD23	1:A:88:VAL:HA	1.85	0.58
1:C:114:ILE:HG13	1:C:137:LEU:HD21	1.84	0.58
1:B:693:GLU:OE1	1:B:696:LYS:HE2	2.04	0.58
1:C:81:ALA:O	1:C:492:ARG:NH2	2.37	0.58
1:C:614:SER:HB2	3:C:1063:HOH:O	2.03	0.58
1:D:498:SER:O	1:D:502:LYS:HG2	2.04	0.58
1:A:140:ARG:HG2	1:A:140:ARG:NH1	2.18	0.58
1:D:147:ARG:HB2	3:D:851:HOH:O	2.04	0.58
1:C:65:ASP:OD2	1:C:466:LYS:HB2	2.04	0.58
1:D:691:ARG:NE	3:D:1422:HOH:O	2.23	0.58
1:C:158:SER:HB3	1:C:163:LYS:HB2	1.85	0.58
1:C:422:TYR:CE2	1:C:423:LYS:HD3	2.39	0.58
1:C:600:THR:O	1:C:603:VAL:HG13	2.04	0.58
1:D:172:ILE:H	1:D:186:THR:CG2	2.13	0.58
1:D:272:ASN:HD22	1:D:272:ASN:C	2.07	0.58
1:A:676:PRO:HG2	1:A:677:GLU:OE2	2.04	0.57
1:D:106:SER:HB3	1:D:115:LEU:HB3	1.86	0.57
1:B:177:GLU:CB	1:B:180:LEU:HD13	2.34	0.57
1:B:704:HIS:HD2	1:B:716:SER:OG	1.87	0.57
1:D:761:GLN:HE21	1:D:762:CYS:N	2.03	0.57
1:D:392:LYS:HE3	1:D:393:ASP:OD2	2.04	0.57
1:A:147:ARG:HD3	3:A:1158:HOH:O	2.03	0.57
1:A:734:TRP:CD1	1:A:736:THR:HG22	2.40	0.57
1:D:184:ARG:HH11	1:D:187:TRP:HA	1.69	0.57
1:D:429:ARG:NE	3:D:1140:HOH:O	2.33	0.57
1:A:97:GLU:HB3	3:A:938:HOH:O	2.05	0.57
1:B:285:ILE:HD12	1:B:285:ILE:N	2.20	0.57
1:C:69:LEU:CD1	1:C:107:ILE:HD12	2.34	0.57
1:C:293:MET:HE1	1:C:317:ARG:HG3	1.86	0.57
1:D:289:ALA:HA	1:D:294:LEU:CD1	2.35	0.57
1:D:361:GLU:HB3	3:D:1154:HOH:O	2.04	0.57
1:C:114:ILE:CD1	1:C:137:LEU:HD21	2.34	0.57
1:C:272:ASN:HD22	1:C:273:THR:N	2.03	0.57
1:C:285:ILE:N	1:C:285:ILE:HD12	2.19	0.57
1:D:272:ASN:HD22	1:D:274:ASP:H	1.50	0.57
1:B:334:SER:HB3	1:B:336:ARG:CD	2.35	0.57
1:C:156:THR:HG21	1:C:214:LEU:HD11	1.86	0.57
1:C:361:GLU:HB3	3:C:821:HOH:O	2.04	0.57
1:C:76:ILE:HB	1:C:90:LEU:CD1	2.35	0.56
1:D:402:TRP:CD2	1:D:421:GLU:HB2	2.39	0.56

Continued on next page...

Continued from previous page...

Atom-1	Atom-2	Interatomic distance (Å)	Clash overlap (Å)
1:A:177:GLU:CB	1:A:180:LEU:HD22	2.33	0.56
1:C:71:LYS:HG2	3:C:1167:HOH:O	2.06	0.56
1:C:90:LEU:O	1:C:90:LEU:HD13	2.04	0.56
1:B:302:ASP:HB3	1:B:314:GLN:HB2	1.87	0.56
1:C:293:MET:HE2	1:C:317:ARG:CG	2.33	0.56
1:C:317:ARG:HD2	1:C:322:TYR:HB3	1.85	0.56
1:A:173:TYR:CE2	1:A:184:ARG:HG3	2.40	0.56
1:B:483:HIS:HD2	3:B:2039:HOH:O	1.87	0.56
1:B:536:LYS:HB3	1:B:536:LYS:NZ	2.21	0.56
1:D:341:VAL:O	1:D:342:ALA:HB3	2.05	0.56
1:D:415:LEU:HB3	1:D:434:ILE:HG23	1.87	0.56
1:A:276:LEU:N	1:A:276:LEU:HD23	2.20	0.56
1:C:435:GLN:HG2	1:C:438:ASP:H	1.69	0.56
1:D:411:THR:C	1:D:413:ASP:H	2.09	0.56
1:D:90:LEU:O	1:D:90:LEU:HD22	2.06	0.56
1:B:528:MET:CE	1:B:530:LEU:HD21	2.36	0.56
1:B:691:ARG:NH1	3:B:2362:HOH:O	2.26	0.56
1:D:651:ILE:HG21	1:D:755:MET:HE3	1.87	0.56
1:A:341:VAL:O	1:A:342:ALA:HB3	2.04	0.56
1:A:528:MET:CE	1:A:530:LEU:HD21	2.35	0.56
1:B:272:ASN:C	1:B:272:ASN:HD22	2.09	0.56
1:B:726:VAL:HG12	1:B:728:VAL:HG23	1.87	0.56
1:C:354:VAL:HG12	1:C:359:PRO:HG3	1.87	0.56
1:C:506:ASN:HB3	3:C:1321:HOH:O	2.05	0.56
1:A:487:ASN:O	1:A:488:ASP:HB2	2.05	0.56
1:B:180:LEU:HD23	3:B:1823:HOH:O	2.05	0.56
1:B:504:LEU:HA	1:B:507:VAL:CG1	2.35	0.56
1:B:214:LEU:O	1:B:214:LEU:HD12	2.06	0.55
1:C:253:ARG:HH12	1:D:253:ARG:HH22	1.54	0.55
1:A:514:LEU:HD12	1:A:557:THR:HG22	1.88	0.55
1:B:69:LEU:CD1	1:B:107:ILE:HD12	2.36	0.55
1:B:269:PHE:CE2	1:B:286:GLN:HB2	2.41	0.55
1:B:377:ASN:HB3	1:B:379:GLU:H	1.71	0.55
1:B:481:THR:OG1	1:B:483:HIS:HE1	1.89	0.55
1:A:293:MET:CE	1:A:317:ARG:HG3	2.35	0.55
1:C:704:HIS:HD2	1:C:716:SER:OG	1.90	0.55
1:C:74:ASN:HB3	1:C:92:ASN:HB3	1.88	0.55
1:D:697:GLN:HG3	3:D:1141:HOH:O	2.04	0.55
1:A:72:GLN:HB3	3:A:957:HOH:O	2.05	0.55
1:D:108:SER:C	1:D:110:ASP:H	2.09	0.55
1:D:277:SER:O	1:D:278:SER:HB3	2.06	0.55

Continued on next page...

Continued from previous page...

Atom-1	Atom-2	Interatomic distance (Å)	Clash overlap (Å)
1:B:764:SER:HA	3:B:1895:HOH:O	2.06	0.55
1:C:340:LEU:O	1:C:343:ARG:HB3	2.07	0.55
1:C:546:VAL:HG22	1:C:547:TYR:N	2.22	0.55
1:D:243:ASP:HB3	3:D:1061:HOH:O	2.07	0.55
1:D:472:CYS:O	1:D:478:PRO:HA	2.07	0.55
1:C:377:ASN:HB2	1:C:381:TYR:H	1.72	0.55
1:A:39:SER:HB3	1:A:40:ARG:HE	1.72	0.55
1:B:319:ILE:HG22	1:B:321:ASN:HB2	1.88	0.55
1:B:65:ASP:CG	1:B:464:GLU:HB2	2.27	0.55
1:A:272:ASN:HD22	1:A:274:ASP:H	1.55	0.54
1:B:173:TYR:CE2	1:B:184:ARG:HG3	2.42	0.54
1:A:248:TYR:CZ	1:B:234:PRO:HB2	2.42	0.54
1:C:140:ARG:HG2	1:C:140:ARG:HH11	1.72	0.54
1:C:489:LYS:HB3	1:C:489:LYS:NZ	2.22	0.54
1:A:177:GLU:CG	1:A:180:LEU:HD22	2.37	0.54
1:A:751:ILE:O	1:A:755:MET:HG3	2.06	0.54
1:C:146:GLU:OE2	1:C:181:PRO:HG3	2.08	0.54
1:C:272:ASN:C	1:C:272:ASN:HD22	2.10	0.54
1:D:306:ALA:CB	1:D:310:ARG:HD2	2.37	0.54
1:D:76:ILE:HB	1:D:90:LEU:CD1	2.36	0.54
1:A:153:GLN:HE22	1:A:170:ASN:HD21	1.52	0.54
1:A:669:ARG:HD2	3:A:1572:HOH:O	2.07	0.54
1:C:78:VAL:HG12	1:C:87:SER:O	2.07	0.54
1:D:60:LEU:C	1:D:60:LEU:HD12	2.27	0.54
1:A:291:ALA:O	1:A:295:ILE:HG23	2.06	0.54
1:B:74:ASN:C	1:B:92:ASN:HB3	2.28	0.54
1:C:354:VAL:CG1	1:C:359:PRO:HG3	2.37	0.54
1:D:40:ARG:HB2	1:D:506:ASN:O	2.07	0.54
3:C:792:HOH:O	1:D:736:THR:HG23	2.07	0.54
1:A:321:ASN:ND2	3:A:863:HOH:O	2.40	0.54
1:B:147:ARG:HD3	3:B:2363:HOH:O	2.07	0.54
1:B:341:VAL:O	1:B:342:ALA:CB	2.52	0.54
1:B:597:ARG:NH1	1:B:679:ASN:HD21	2.05	0.54
1:D:543:LEU:HD11	1:D:627:TRP:CD1	2.43	0.54
1:D:76:ILE:HD12	1:D:90:LEU:HD11	1.88	0.54
1:C:387:PHE:CD2	1:C:394:CYS:HB3	2.43	0.54
1:A:187:TRP:N	1:A:187:TRP:CD1	2.75	0.54
1:D:492:ARG:HA	3:D:1076:HOH:O	2.08	0.54
1:A:171:ASP:HA	1:A:186:THR:CG2	2.38	0.54
1:A:285:ILE:N	1:A:285:ILE:HD12	2.23	0.54
1:A:580:GLY:O	1:A:583:SER:HB2	2.07	0.54

Continued on next page...

Continued from previous page...

Atom-1	Atom-2	Interatomic distance (Å)	Clash overlap (Å)
1:C:341:VAL:C	1:C:343:ARG:H	2.09	0.54
1:C:234:PRO:HB2	1:D:248:TYR:CZ	2.43	0.54
1:D:600:THR:O	1:D:603:VAL:HG13	2.07	0.54
1:D:622:LYS:HB2	1:D:622:LYS:NZ	2.22	0.54
1:D:242:SER:HB3	1:D:246:LEU:HD12	1.89	0.54
1:A:160:VAL:HG23	1:A:161:GLY:N	2.23	0.53
1:A:172:ILE:N	1:A:186:THR:HG22	2.15	0.53
1:C:341:VAL:HG22	1:C:342:ALA:N	2.23	0.53
1:D:489:LYS:HB3	1:D:489:LYS:HZ2	1.71	0.53
1:A:158:SER:HB3	1:A:163:LYS:HB2	1.90	0.53
1:C:172:ILE:H	1:C:186:THR:CG2	2.17	0.53
1:C:85:ASN:ND2	3:C:871:HOH:O	2.41	0.53
1:D:93:SER:HA	1:D:96:ASP:OD1	2.08	0.53
1:A:106:SER:HB3	1:A:115:LEU:HB3	1.90	0.53
1:C:438:ASP:OD2	1:C:441:LYS:HG3	2.09	0.53
1:D:74:ASN:HB3	1:D:92:ASN:HB3	1.89	0.53
1:D:41:LYS:H	1:D:41:LYS:HD3	1.73	0.53
1:D:513:LYS:HD3	3:D:1177:HOH:O	2.07	0.53
1:A:40:ARG:CD	1:A:40:ARG:H	2.19	0.53
1:C:244:GLU:CD	1:D:689:MET:HG3	2.29	0.53
1:C:277:SER:O	1:C:278:SER:HB3	2.07	0.53
1:C:481:THR:OG1	1:C:483:HIS:HE1	1.91	0.53
1:A:276:LEU:CD2	1:A:276:LEU:N	2.71	0.53
1:A:310:ARG:NH1	1:A:329:ASP:OD1	2.42	0.53
1:C:177:GLU:HB2	1:C:180:LEU:HD13	1.90	0.53
1:C:486:VAL:HG13	1:C:487:ASN:H	1.73	0.53
1:C:764:SER:HB3	3:C:1066:HOH:O	2.08	0.53
1:D:170:ASN:N	1:D:170:ASN:HD22	2.04	0.53
1:D:40:ARG:CD	1:D:40:ARG:H	2.21	0.53
1:D:627:TRP:CE3	1:D:755:MET:HE1	2.44	0.53
1:B:40:ARG:HD2	1:B:40:ARG:N	2.24	0.53
1:D:541:PRO:HG3	1:D:623:ARG:CZ	2.38	0.53
1:D:627:TRP:CZ3	1:D:755:MET:HE1	2.43	0.53
1:B:41:LYS:HG3	3:B:1682:HOH:O	2.07	0.53
1:D:125:ARG:HG2	1:D:126:HIS:NE2	2.23	0.53
1:D:183:TYR:HE1	1:D:277:SER:O	1.92	0.53
1:A:627:TRP:HB2	1:A:651:ILE:HB	1.91	0.52
1:B:512:LYS:HD3	3:B:2185:HOH:O	2.08	0.52
1:B:513:LYS:HE3	1:B:530:LEU:HD11	1.90	0.52
1:B:597:ARG:HH12	1:B:679:ASN:HD21	1.56	0.52
1:B:71:LYS:NZ	1:B:105:TYR:HB2	2.24	0.52

Continued on next page...

Continued from previous page...

Atom-1	Atom-2	Interatomic distance (Å)	Clash overlap (Å)
1:C:177:GLU:CB	1:C:180:LEU:HD13	2.39	0.52
1:C:253:ARG:HH22	1:D:253:ARG:HH22	1.56	0.52
1:D:51:ASN:OD1	1:D:54:ARG:HD3	2.09	0.52
1:C:382:ARG:NH2	3:C:766:HOH:O	2.42	0.52
1:B:184:ARG:HD2	1:B:187:TRP:CD2	2.43	0.52
1:B:654:ALA:HA	1:B:704:HIS:CD2	2.43	0.52
1:D:109:PRO:HG2	1:D:160:VAL:O	2.08	0.52
1:D:704:HIS:CD2	1:D:716:SER:OG	2.62	0.52
1:C:536:LYS:HE3	3:C:1007:HOH:O	2.09	0.52
1:A:471:ARG:HG2	1:A:480:TYR:CD2	2.44	0.52
1:A:98:PHE:CE2	1:A:100:HIS:HB2	2.44	0.52
1:C:341:VAL:HG12	3:C:1142:HOH:O	2.09	0.52
1:A:162:HIS:HD2	1:A:178:PRO:HD3	1.75	0.52
1:A:293:MET:HE1	1:A:317:ARG:CG	2.38	0.52
1:B:546:VAL:HG22	1:B:547:TYR:N	2.24	0.52
1:B:629:TRP:HB3	3:B:2210:HOH:O	2.09	0.52
1:C:144:THR:HA	1:C:147:ARG:NH2	2.24	0.52
1:C:242:SER:HB3	1:C:246:LEU:HD12	1.91	0.52
1:C:649:CYS:HB3	1:C:699:GLU:HB2	1.92	0.52
1:D:522:THR:HG22	1:D:523:LYS:N	2.25	0.52
1:B:579:ASP:HB3	1:B:583:SER:OG	2.10	0.52
1:C:286:GLN:HE21	1:C:288:THR:HG22	1.75	0.52
1:C:422:TYR:CD2	1:C:423:LYS:HD3	2.45	0.52
1:A:272:ASN:C	1:A:272:ASN:HD22	2.13	0.52
1:B:293:MET:HG2	1:B:315:TRP:HB3	1.90	0.52
1:D:289:ALA:CB	1:D:290:PRO:HA	2.19	0.52
1:A:320:GLN:OE1	1:A:669:ARG:HD3	2.10	0.52
1:A:310:ARG:HG3	1:A:329:ASP:OD1	2.09	0.52
1:A:40:ARG:NH1	1:A:505:GLN:O	2.43	0.52
1:B:98:PHE:CD2	1:B:100:HIS:HB2	2.45	0.52
1:B:429:ARG:NH2	3:B:2361:HOH:O	2.42	0.51
1:C:542:LEU:HD23	1:C:542:LEU:C	2.30	0.51
1:C:85:ASN:HB2	3:C:1196:HOH:O	2.09	0.51
1:B:413:ASP:HB2	3:B:2372:HOH:O	2.10	0.51
1:B:451:PRO:HG2	3:B:2056:HOH:O	2.09	0.51
1:C:197:GLY:C	1:C:213:ALA:HB3	2.30	0.51
1:C:510:PRO:HD3	1:C:569:SER:HB2	1.93	0.51
1:A:107:ILE:HG12	1:A:114:ILE:HG12	1.92	0.51
1:A:313:LEU:N	1:A:313:LEU:HD22	2.25	0.51
1:A:392:LYS:HG3	1:A:393:ASP:H	1.76	0.51
1:A:567:LEU:O	1:A:571:GLU:HB2	2.10	0.51

Continued on next page...

Continued from previous page...

Atom-1	Atom-2	Interatomic distance (Å)	Clash overlap (Å)
1:B:377:ASN:HB2	1:B:381:TYR:H	1.75	0.51
1:B:614:SER:HA	1:B:619:VAL:HB	1.91	0.51
1:C:458:SER:OG	1:C:471:ARG:HB2	2.10	0.51
1:D:41:LYS:NZ	1:D:507:VAL:HB	2.26	0.51
1:A:487:ASN:HB3	1:A:489:LYS:HG3	1.92	0.51
1:C:172:ILE:N	1:C:186:THR:HG22	2.19	0.51
1:C:305:TRP:CE2	1:C:311:ILE:HD12	2.46	0.51
1:C:74:ASN:HB2	3:C:904:HOH:O	2.11	0.51
1:D:147:ARG:HG2	1:D:147:ARG:HH11	1.75	0.51
1:D:171:ASP:OD1	1:D:186:THR:HG23	2.11	0.51
1:D:293:MET:HE2	1:D:293:MET:HA	1.92	0.51
1:A:608:GLU:OE1	1:A:608:GLU:HA	2.09	0.51
1:D:718:GLN:HE21	1:D:718:GLN:HA	1.75	0.51
1:B:334:SER:HB3	1:B:336:ARG:HD2	1.92	0.51
1:C:330:TYR:HE1	1:C:335:GLY:O	1.94	0.51
1:C:612:GLN:O	1:C:616:MET:HG3	2.10	0.51
1:D:403:GLU:OE1	1:D:585:TYR:HA	2.10	0.51
1:D:435:GLN:HG2	1:D:437:SER:H	1.76	0.51
1:D:543:LEU:HD23	1:D:625:ALA:HB3	1.93	0.51
1:D:74:ASN:C	1:D:92:ASN:HB3	2.31	0.51
1:A:520:ASN:ND2	3:A:1188:HOH:O	2.43	0.51
1:A:658:ARG:HG2	1:A:661:TYR:CE2	2.46	0.51
1:B:140:ARG:NH1	1:B:140:ARG:HG2	2.26	0.51
1:C:146:GLU:O	1:C:175:LYS:HE2	2.11	0.51
1:C:314:GLN:HE22	1:C:373:LYS:HZ1	1.57	0.51
1:C:336:ARG:HG2	1:C:336:ARG:HH11	1.76	0.51
1:A:466:LYS:HB2	3:A:1332:HOH:O	2.10	0.50
1:C:302:ASP:HB3	1:C:314:GLN:HB2	1.93	0.50
1:D:177:GLU:HB2	1:D:180:LEU:HD13	1.93	0.50
1:B:392:LYS:HG3	1:B:393:ASP:N	2.26	0.50
1:B:544:LEU:CD2	1:B:606:GLN:HG3	2.42	0.50
1:C:153:GLN:HE22	1:C:170:ASN:ND2	2.09	0.50
1:C:276:LEU:H	1:C:276:LEU:HD13	1.76	0.50
1:D:40:ARG:HH11	1:D:40:ARG:HG2	1.76	0.50
1:A:92:ASN:ND2	1:A:93:SER:H	2.08	0.50
1:B:489:LYS:NZ	1:B:489:LYS:HB3	2.25	0.50
1:C:320:GLN:OE1	1:C:669:ARG:HD3	2.11	0.50
1:D:176:ILE:HD13	1:D:183:TYR:CE2	2.46	0.50
1:D:276:LEU:H	1:D:276:LEU:CD2	2.21	0.50
1:D:539:LYS:NZ	1:D:617:GLY:O	2.44	0.50
1:D:65:ASP:OD2	1:D:466:LYS:HB2	2.10	0.50

Continued on next page...

Continued from previous page...

Atom-1	Atom-2	Interatomic distance (Å)	Clash overlap (Å)
1:A:413:ASP:HB3	1:A:414:TYR:CD1	2.47	0.50
1:A:74:ASN:HB3	1:A:92:ASN:OD1	2.12	0.50
1:B:153:GLN:HE22	1:B:170:ASN:ND2	2.10	0.50
1:A:39:SER:CB	1:A:40:ARG:HE	2.25	0.50
1:B:76:ILE:HB	1:B:90:LEU:HD13	1.92	0.50
1:C:214:LEU:HD12	1:C:214:LEU:O	2.11	0.50
1:D:520:ASN:O	1:D:521:GLU:HB2	2.10	0.50
1:A:293:MET:HA	1:A:293:MET:HE3	1.94	0.50
1:A:74:ASN:C	1:A:92:ASN:HB3	2.31	0.50
1:C:387:PHE:CE2	1:C:394:CYS:HB3	2.46	0.50
1:C:726:VAL:HG12	1:C:728:VAL:HG23	1.93	0.50
1:B:760:LYS:HE3	3:B:2134:HOH:O	2.10	0.50
1:C:41:LYS:HD3	1:C:41:LYS:H	1.77	0.50
1:D:597:ARG:HG2	3:D:1165:HOH:O	2.11	0.50
1:D:85:ASN:ND2	3:D:845:HOH:O	2.45	0.50
1:C:402:TRP:CD2	1:C:421:GLU:HB2	2.47	0.50
1:D:276:LEU:O	1:D:276:LEU:HD23	2.11	0.50
1:D:534:PHE:HZ	1:D:618:PHE:CG	2.30	0.50
1:B:510:PRO:HD3	1:B:569:SER:HB2	1.92	0.49
1:D:319:ILE:HB	3:D:925:HOH:O	2.12	0.49
1:D:435:GLN:NE2	1:D:441:LYS:HD2	2.27	0.49
1:D:64:SER:O	1:D:463:LYS:HG2	2.12	0.49
1:A:232:GLU:N	3:A:1546:HOH:O	2.37	0.49
1:D:291:ALA:O	1:D:295:ILE:HG23	2.12	0.49
1:D:536:LYS:HG2	3:D:873:HOH:O	2.12	0.49
1:B:60:LEU:O	1:B:60:LEU:HD12	2.12	0.49
1:D:334:SER:HB3	1:D:336:ARG:CD	2.43	0.49
1:B:276:LEU:HD23	1:B:276:LEU:O	2.12	0.49
1:C:115:LEU:HD21	1:C:155:VAL:HG11	1.95	0.49
1:A:272:ASN:ND2	1:A:274:ASP:H	2.09	0.49
1:C:341:VAL:HG22	1:C:342:ALA:H	1.77	0.49
1:C:388:GLN:HB3	1:C:391:LYS:HD3	1.94	0.49
1:C:654:ALA:HA	1:C:704:HIS:CD2	2.47	0.49
1:D:179:ASN:OD1	1:D:180:LEU:HD12	2.11	0.49
1:B:471:ARG:NH2	3:B:2160:HOH:O	2.46	0.49
1:C:289:ALA:HB3	3:C:1431:HOH:O	2.12	0.49
1:D:280:THR:HB	3:D:1024:HOH:O	2.11	0.49
1:D:293:MET:HE1	1:D:317:ARG:HG3	1.95	0.49
1:D:612:GLN:O	1:D:616:MET:HG3	2.12	0.49
1:D:734:TRP:HE1	1:D:736:THR:HG22	1.78	0.49
1:A:332:GLU:HB2	3:A:903:HOH:O	2.12	0.49

Continued on next page...

Continued from previous page...

Atom-1	Atom-2	Interatomic distance (Å)	Clash overlap (Å)
1:C:160:VAL:HG22	3:C:1376:HOH:O	2.13	0.49
1:C:170:ASN:HD22	1:C:170:ASN:N	2.10	0.49
1:D:181:PRO:HD2	3:D:1356:HOH:O	2.12	0.49
1:A:622:LYS:NZ	1:A:622:LYS:HB2	2.28	0.49
1:B:276:LEU:CD2	1:B:276:LEU:H	2.26	0.49
1:B:615:LYS:HE2	3:B:2019:HOH:O	2.12	0.49
1:B:336:ARG:HG2	1:B:336:ARG:HH11	1.76	0.49
1:B:516:PHE:CE2	1:B:523:LYS:HE2	2.47	0.49
1:C:535:ASP:C	1:C:537:SER:H	2.16	0.49
1:C:76:ILE:CD1	1:C:90:LEU:HD11	2.43	0.49
1:D:313:LEU:N	3:D:1433:HOH:O	2.45	0.49
1:D:546:VAL:HG22	1:D:547:TYR:N	2.27	0.49
1:A:147:ARG:HB2	3:A:828:HOH:O	2.13	0.49
1:C:273:THR:HA	1:C:276:LEU:CD1	2.43	0.49
1:C:273:THR:HA	1:C:276:LEU:HD11	1.94	0.49
1:C:388:GLN:CB	1:C:391:LYS:HD3	2.43	0.48
1:C:74:ASN:C	1:C:92:ASN:HB3	2.33	0.48
1:D:293:MET:HE2	1:D:317:ARG:HG3	1.95	0.48
1:D:484:SER:OG	1:D:489:LYS:HB2	2.12	0.48
1:A:40:ARG:N	1:A:40:ARG:HD2	2.28	0.48
1:D:654:ALA:HA	1:D:704:HIS:CD2	2.49	0.48
1:A:71:LYS:HZ3	1:A:105:TYR:HB2	1.74	0.48
1:A:293:MET:CE	1:A:317:ARG:CG	2.91	0.48
1:A:489:LYS:HB3	1:A:489:LYS:HZ3	1.76	0.48
1:B:513:LYS:O	1:B:527:GLN:HA	2.13	0.48
1:C:397:ILE:HG13	1:C:398:THR:HG23	1.94	0.48
1:C:60:LEU:HD12	1:C:60:LEU:C	2.34	0.48
1:D:147:ARG:HD3	3:D:1136:HOH:O	2.14	0.48
1:D:341:VAL:HG12	3:D:805:HOH:O	2.13	0.48
1:D:554:LYS:HB3	1:D:577:SER:HB3	1.96	0.48
1:A:141:GLN:HG2	3:A:1372:HOH:O	2.14	0.48
1:B:98:PHE:CE2	1:B:100:HIS:HB2	2.48	0.48
1:C:136:ASP:O	1:C:140:ARG:HA	2.14	0.48
1:C:60:LEU:HD12	1:C:60:LEU:O	2.13	0.48
1:D:726:VAL:HG13	1:D:728:VAL:HG23	1.95	0.48
1:B:504:LEU:O	1:B:507:VAL:HG13	2.13	0.48
1:D:272:ASN:HD21	1:D:274:ASP:HB2	1.77	0.48
1:D:290:PRO:O	1:D:294:LEU:HG	2.14	0.48
1:A:392:LYS:HG3	1:A:393:ASP:N	2.28	0.48
1:C:377:ASN:ND2	1:C:383:HIS:HD2	2.12	0.48
1:A:546:VAL:HG22	1:A:547:TYR:N	2.28	0.48

Continued on next page...

Continued from previous page...

Atom-1	Atom-2	Interatomic distance (Å)	Clash overlap (Å)
1:B:74:ASN:HB3	1:B:92:ASN:HB3	1.96	0.48
1:C:145:GLU:HA	3:C:1447:HOH:O	2.13	0.48
1:C:374:ILE:HD11	1:C:406:GLY:HA2	1.95	0.48
1:C:58:TYR:CE2	1:C:494:LEU:HB3	2.49	0.48
1:C:546:VAL:CG2	1:C:547:TYR:N	2.76	0.48
1:A:277:SER:O	1:A:278:SER:HB3	2.14	0.48
1:A:81:ALA:O	1:A:492:ARG:NH2	2.46	0.48
1:B:41:LYS:HB2	3:B:1948:HOH:O	2.14	0.48
1:B:536:LYS:HB3	1:B:536:LYS:HZ3	1.79	0.48
1:C:159:PRO:HG2	1:C:217:SER:O	2.14	0.48
1:D:153:GLN:HE22	1:D:170:ASN:HD21	1.61	0.48
1:A:658:ARG:O	1:A:658:ARG:HG3	2.14	0.47
1:B:289:ALA:CB	1:B:290:PRO:CA	2.78	0.47
1:C:253:ARG:HH22	1:D:253:ARG:HH12	1.61	0.47
1:C:472:CYS:O	1:C:478:PRO:HA	2.14	0.47
1:C:486:VAL:HG13	1:C:487:ASN:N	2.29	0.47
1:D:411:THR:C	1:D:413:ASP:N	2.65	0.47
1:A:154:TRP:CE2	1:A:212:SER:HB2	2.48	0.47
1:B:177:GLU:HB2	1:B:180:LEU:HD22	1.95	0.47
1:B:658:ARG:HG2	1:B:661:TYR:CE2	2.49	0.47
1:C:336:ARG:HG2	1:C:336:ARG:NH1	2.30	0.47
1:D:140:ARG:HH11	1:D:140:ARG:HG2	1.79	0.47
1:D:429:ARG:NH2	3:D:945:HOH:O	2.46	0.47
1:D:704:HIS:HE1	1:D:711:VAL:O	1.98	0.47
1:B:385:CYS:HB3	1:B:387:PHE:CE1	2.50	0.47
1:B:41:LYS:HD3	1:B:41:LYS:H	1.79	0.47
1:D:455:GLN:HG3	1:D:475:PRO:CD	2.44	0.47
1:C:125:ARG:HB3	3:C:1031:HOH:O	2.13	0.47
1:D:40:ARG:HD2	1:D:508:GLN:HG3	1.95	0.47
1:B:105:TYR:HB2	3:B:1825:HOH:O	2.13	0.47
1:B:486:VAL:HG13	1:B:487:ASN:N	2.30	0.47
1:D:597:ARG:HH11	1:D:682:HIS:HB2	1.78	0.47
1:A:214:LEU:O	1:A:214:LEU:HD12	2.15	0.47
1:A:486:VAL:HG13	1:A:487:ASN:N	2.29	0.47
1:C:420:ASN:HB2	1:C:426:PRO:HA	1.96	0.47
1:C:64:SER:O	1:C:463:LYS:HG2	2.14	0.47
1:D:520:ASN:O	1:D:521:GLU:CB	2.62	0.47
1:B:458:SER:OG	1:B:471:ARG:HB2	2.14	0.47
1:D:528:MET:HE3	1:D:574:ILE:HG21	1.97	0.47
1:D:85:ASN:ND2	3:D:916:HOH:O	2.47	0.47
1:C:40:ARG:HB2	1:C:506:ASN:O	2.15	0.47

Continued on next page...

Continued from previous page...

Atom-1	Atom-2	Interatomic distance (Å)	Clash overlap (Å)
1:C:676:PRO:HG2	1:C:677:GLU:OE2	2.15	0.47
1:D:306:ALA:HB3	1:D:310:ARG:HD2	1.96	0.47
1:D:513:LYS:O	1:D:527:GLN:HA	2.15	0.47
1:D:734:TRP:NE1	1:D:736:THR:HG22	2.29	0.47
1:A:108:SER:C	1:A:110:ASP:N	2.64	0.47
1:A:140:ARG:HH11	1:A:140:ARG:CG	2.25	0.47
1:A:39:SER:HB3	1:A:40:ARG:NE	2.29	0.47
1:A:60:LEU:O	1:A:60:LEU:HD12	2.15	0.47
1:B:55:LEU:HD23	1:B:500:LEU:HD22	1.96	0.47
1:C:237:GLU:HA	1:C:252:VAL:O	2.15	0.47
1:A:290:PRO:HG2	1:A:293:MET:HB2	1.97	0.47
1:D:429:ARG:NH2	3:D:1140:HOH:O	2.46	0.47
1:A:532:PRO:HD3	1:A:569:SER:HA	1.97	0.47
1:B:107:ILE:HG12	1:B:114:ILE:HG12	1.96	0.47
1:B:79:PHE:CE1	1:B:86:SER:HB3	2.50	0.47
1:C:103:ASN:HB2	3:C:1239:HOH:O	2.14	0.47
1:D:302:ASP:HB3	1:D:314:GLN:HB2	1.97	0.47
1:D:93:SER:HB2	1:D:96:ASP:OD2	2.14	0.47
1:A:691:ARG:NH2	3:A:1556:HOH:O	2.40	0.46
1:A:734:TRP:NE1	1:A:736:THR:HG22	2.30	0.46
1:D:608:GLU:O	1:D:612:GLN:HG2	2.15	0.46
1:A:704:HIS:HE1	1:A:711:VAL:O	1.98	0.46
1:A:93:SER:HB2	1:A:96:ASP:OD2	2.16	0.46
1:C:358:ARG:HB3	3:C:909:HOH:O	2.15	0.46
1:C:701:LEU:HD22	1:C:703:ILE:HG13	1.96	0.46
1:A:741:GLY:O	1:A:742:ILE:C	2.53	0.46
1:C:114:ILE:CG1	1:C:137:LEU:HD21	2.45	0.46
1:C:183:TYR:CE1	1:C:277:SER:O	2.65	0.46
1:C:58:TYR:CD2	1:C:494:LEU:HB3	2.51	0.46
1:D:461:PHE:CD2	1:D:468:TYR:HB3	2.50	0.46
1:D:577:SER:HA	3:D:894:HOH:O	2.14	0.46
1:D:649:CYS:HB3	1:D:699:GLU:HB2	1.96	0.46
1:D:74:ASN:HB3	1:D:92:ASN:CB	2.45	0.46
1:A:240:PHE:HB3	1:A:250:LYS:HG3	1.97	0.46
1:B:118:TYR:HB2	3:B:1772:HOH:O	2.15	0.46
1:B:272:ASN:HD22	1:B:273:THR:N	2.13	0.46
1:D:350:THR:HG22	3:D:1142:HOH:O	2.15	0.46
1:D:734:TRP:CD1	1:D:736:THR:HG22	2.50	0.46
1:A:377:ASN:HB3	1:A:379:GLU:H	1.80	0.46
1:B:203:TYR:HA	1:B:207:VAL:HG13	1.96	0.46
1:B:612:GLN:HB3	1:B:612:GLN:HE21	1.54	0.46

Continued on next page...

Continued from previous page...

Atom-1	Atom-2	Interatomic distance (Å)	Clash overlap (Å)
1:C:108:SER:C	1:C:110:ASP:H	2.19	0.46
1:C:77:LEU:CD2	1:C:88:VAL:HA	2.45	0.46
1:D:127:SER:HB3	1:D:211:TYR:CG	2.50	0.46
1:D:485:SER:O	1:D:486:VAL:C	2.54	0.46
1:A:370:SER:HB2	1:A:387:PHE:O	2.15	0.46
1:A:691:ARG:NH1	3:A:862:HOH:O	2.48	0.46
1:B:127:SER:HB3	1:B:211:TYR:CD1	2.50	0.46
1:A:186:THR:HG21	1:A:196:ASN:CB	2.45	0.46
1:A:422:TYR:CE2	1:A:423:LYS:HD3	2.49	0.46
1:B:554:LYS:HB3	1:B:577:SER:HB3	1.98	0.46
1:C:175:LYS:NZ	1:C:182:SER:HB2	2.30	0.46
1:A:136:ASP:OD1	1:A:138:ASN:HB2	2.16	0.46
1:A:459:VAL:HG22	1:A:460:SER:N	2.30	0.46
1:A:57:LEU:HD23	3:A:939:HOH:O	2.16	0.46
1:A:720:SER:O	1:A:724:VAL:HG23	2.16	0.46
1:B:231:THR:HG22	1:B:232:GLU:HG3	1.96	0.46
1:C:276:LEU:HD22	1:C:276:LEU:N	2.31	0.46
1:C:693:GLU:HA	1:C:726:VAL:HG11	1.97	0.46
1:C:696:LYS:CG	1:C:728:VAL:HG22	2.46	0.46
1:D:154:TRP:O	1:D:166:TYR:HA	2.16	0.46
1:D:176:ILE:HD13	1:D:183:TYR:HE2	1.81	0.46
1:C:248:TYR:CZ	1:D:234:PRO:HB2	2.50	0.46
1:A:172:ILE:H	1:A:186:THR:CG2	2.15	0.46
1:B:55:LEU:HD23	1:B:500:LEU:CD2	2.45	0.46
1:B:79:PHE:CD1	1:B:86:SER:HB3	2.51	0.46
1:A:60:LEU:HD12	1:A:60:LEU:C	2.36	0.46
1:D:259:ALA:HB3	1:D:660:GLU:HA	1.98	0.46
1:D:377:ASN:HB2	1:D:381:TYR:O	2.16	0.46
1:A:334:SER:HB3	1:A:336:ARG:HD2	1.98	0.45
1:A:435:GLN:HE22	1:A:441:LYS:HZ2	1.64	0.45
1:B:193:ILE:CG2	1:B:194:ILE:HD12	2.25	0.45
1:B:310:ARG:HG3	1:B:329:ASP:OD1	2.15	0.45
1:C:333:SER:HB2	3:C:945:HOH:O	2.15	0.45
1:C:334:SER:HB3	1:C:336:ARG:CD	2.46	0.45
1:D:108:SER:C	1:D:110:ASP:N	2.69	0.45
1:D:232:GLU:HG3	3:D:1026:HOH:O	2.16	0.45
1:C:736:THR:OG1	1:D:721:LYS:HD3	2.15	0.45
1:A:285:ILE:N	1:A:285:ILE:CD1	2.78	0.45
1:A:325:MET:HE1	1:A:327:ILE:HD11	1.98	0.45
1:B:489:LYS:HB3	1:B:489:LYS:HZ3	1.81	0.45
1:C:195:TYR:HB3	1:C:198:ILE:HG13	1.98	0.45

Continued on next page...

Continued from previous page...

Atom-1	Atom-2	Interatomic distance (Å)	Clash overlap (Å)
1:C:325:MET:O	1:C:344:GLN:HB2	2.17	0.45
1:C:314:GLN:NE2	1:C:373:LYS:HZ2	2.13	0.45
1:A:155:VAL:HG13	1:A:166:TYR:HB3	1.99	0.45
1:A:293:MET:HE1	1:A:317:ARG:N	2.31	0.45
1:A:691:ARG:NE	3:A:1556:HOH:O	2.34	0.45
1:B:127:SER:HB3	1:B:211:TYR:CG	2.51	0.45
1:B:221:THR:HG23	1:B:274:ASP:OD2	2.17	0.45
1:D:192:ASP:O	1:D:193:ILE:HD13	2.16	0.45
1:A:651:ILE:HD13	1:A:755:MET:HE2	1.97	0.45
1:A:458:SER:OG	1:A:471:ARG:HB2	2.15	0.45
1:B:108:SER:C	1:B:110:ASP:N	2.70	0.45
1:D:520:ASN:HB2	3:D:1354:HOH:O	2.16	0.45
1:A:302:ASP:HB2	3:A:1560:HOH:O	2.16	0.45
1:A:40:ARG:N	1:A:40:ARG:CD	2.79	0.45
1:A:425:MET:HA	1:A:426:PRO:HD3	1.77	0.45
1:A:90:LEU:HD22	1:A:90:LEU:C	2.37	0.45
1:C:140:ARG:NH1	1:C:140:ARG:HG2	2.31	0.45
1:B:377:ASN:ND2	1:B:383:HIS:HD2	2.15	0.45
1:C:147:ARG:HG2	1:C:147:ARG:HH11	1.82	0.45
1:D:78:VAL:HG13	1:D:78:VAL:O	2.15	0.45
1:A:237:GLU:HA	1:A:252:VAL:O	2.17	0.45
1:A:504:LEU:HA	1:A:507:VAL:HG12	1.98	0.45
1:A:616:MET:HB3	1:A:618:PHE:CE2	2.52	0.45
1:C:60:LEU:HB2	1:C:68:TYR:CD1	2.51	0.45
1:C:651:ILE:HG21	1:C:755:MET:CE	2.29	0.45
1:D:184:ARG:HD2	1:D:187:TRP:CZ2	2.51	0.45
1:D:388:GLN:CB	1:D:391:LYS:HB2	2.45	0.45
1:A:471:ARG:HG2	1:A:480:TYR:HD2	1.80	0.45
1:A:756:SER:O	1:A:760:LYS:HG3	2.17	0.45
1:C:154:TRP:O	1:C:166:TYR:HA	2.17	0.45
1:C:415:LEU:HB3	1:C:434:ILE:HG22	1.99	0.45
1:C:658:ARG:HD2	1:C:661:TYR:CE1	2.51	0.45
1:D:526:TYR:C	1:D:526:TYR:CD1	2.90	0.45
1:D:81:ALA:O	1:D:492:ARG:NH2	2.49	0.45
1:A:392:LYS:HG2	3:A:1151:HOH:O	2.16	0.45
1:A:69:LEU:HD13	1:A:107:ILE:HD12	1.98	0.45
1:B:596:ARG:C	1:B:597:ARG:HD3	2.36	0.45
1:C:123:GLN:HG2	1:C:124:TRP:CD2	2.52	0.45
1:C:614:SER:HA	1:C:619:VAL:HB	1.97	0.45
1:C:736:THR:HG23	3:D:854:HOH:O	2.17	0.45
1:A:183:TYR:HE1	1:A:278:SER:HA	1.82	0.44

Continued on next page...

Continued from previous page...

Atom-1	Atom-2	Interatomic distance (Å)	Clash overlap (Å)
1:B:407:ILE:HG23	1:B:415:LEU:HD21	1.99	0.44
1:D:595:ASN:C	1:D:597:ARG:H	2.21	0.44
1:A:90:LEU:O	1:A:90:LEU:HD22	2.16	0.44
1:C:322:TYR:HE1	1:C:324:VAL:CG2	2.30	0.44
1:C:175:LYS:HZ3	1:C:182:SER:HB2	1.81	0.44
1:C:596:ARG:N	1:C:670:TYR:O	2.50	0.44
1:C:82:GLU:HG3	1:C:83:TYR:CE1	2.53	0.44
1:D:377:ASN:HB2	1:D:381:TYR:H	1.83	0.44
1:B:107:ILE:HG22	3:B:1872:HOH:O	2.16	0.44
1:B:317:ARG:HG2	3:B:1755:HOH:O	2.18	0.44
1:B:65:ASP:OD2	1:B:466:LYS:HB2	2.18	0.44
1:C:474:GLY:HA3	1:C:557:THR:O	2.17	0.44
1:C:551:CYS:O	1:C:551:CYS:SG	2.76	0.44
1:D:330:TYR:HE1	1:D:335:GLY:O	2.01	0.44
1:A:613:PHE:C	1:A:615:LYS:H	2.19	0.44
1:C:648:LYS:HE3	3:C:989:HOH:O	2.18	0.44
1:D:322:TYR:OH	1:D:346:ILE:HD13	2.18	0.44
1:D:471:ARG:HG2	1:D:480:TYR:HD2	1.79	0.44
1:A:764:SER:HB3	3:A:1321:HOH:O	2.18	0.44
1:C:512:LYS:HD3	3:C:954:HOH:O	2.16	0.44
1:D:481:THR:OG1	1:D:483:HIS:HE1	2.00	0.44
1:D:608:GLU:HB2	3:D:966:HOH:O	2.16	0.44
1:B:160:VAL:CG2	1:B:161:GLY:H	2.25	0.44
1:B:254:VAL:HA	1:B:255:PRO:HD3	1.86	0.44
1:B:438:ASP:HA	3:B:1773:HOH:O	2.16	0.44
1:A:528:MET:HE1	1:A:618:PHE:CE1	2.52	0.44
1:B:429:ARG:NE	3:B:2330:HOH:O	2.33	0.44
1:C:250:LYS:NZ	3:C:1194:HOH:O	2.50	0.44
1:D:277:SER:O	1:D:278:SER:CB	2.66	0.44
1:D:442:VAL:O	1:D:442:VAL:HG13	2.18	0.44
1:A:170:ASN:N	1:A:170:ASN:ND2	2.64	0.44
1:A:184:ARG:HD2	1:A:187:TRP:CD2	2.53	0.44
1:B:546:VAL:CG2	1:B:547:TYR:N	2.81	0.44
1:C:761:GLN:HE21	1:C:762:CYS:N	2.16	0.44
1:D:141:GLN:HG2	3:D:1016:HOH:O	2.18	0.44
1:D:435:GLN:OE1	1:D:437:SER:HB2	2.17	0.44
1:D:651:ILE:HG21	1:D:755:MET:CE	2.47	0.44
1:A:159:PRO:HD3	1:A:216:TRP:HB3	1.99	0.43
1:A:184:ARG:HD2	1:A:187:TRP:CE2	2.53	0.43
1:A:85:ASN:ND2	3:A:795:HOH:O	2.45	0.43
1:B:392:LYS:HE3	1:B:393:ASP:OD2	2.17	0.43

Continued on next page...

Continued from previous page...

Atom-1	Atom-2	Interatomic distance (Å)	Clash overlap (Å)
1:B:633:GLY:HA3	1:B:655:PRO:HB3	2.00	0.43
1:B:85:ASN:ND2	3:B:1802:HOH:O	2.50	0.43
1:C:358:ARG:HD2	3:C:895:HOH:O	2.17	0.43
1:A:379:GLU:HG2	1:A:381:TYR:CD1	2.53	0.43
1:B:142:LEU:O	1:B:144:THR:HG23	2.18	0.43
1:B:195:TYR:O	1:B:227:GLN:HA	2.18	0.43
1:B:726:VAL:HG13	1:B:726:VAL:O	2.17	0.43
1:B:95:PHE:HB3	1:B:98:PHE:HB2	2.00	0.43
1:D:127:SER:HB3	1:D:211:TYR:CD1	2.54	0.43
1:D:276:LEU:HD22	1:D:276:LEU:N	2.23	0.43
1:D:40:ARG:NH1	3:D:1222:HOH:O	2.51	0.43
1:D:689:MET:HE3	1:D:718:GLN:HB3	2.00	0.43
1:A:76:ILE:HB	1:A:90:LEU:HD13	2.01	0.43
1:B:80:ASN:HB3	1:B:85:ASN:OD1	2.18	0.43
1:C:103:ASN:OD1	1:C:117:GLU:HG2	2.19	0.43
1:C:358:ARG:HH11	1:C:358:ARG:HG2	1.83	0.43
1:C:668:GLU:HG2	1:C:673:LEU:HD12	1.99	0.43
1:D:316:LEU:HD21	1:D:320:GLN:HG2	2.00	0.43
1:B:397:ILE:HG13	1:B:398:THR:HG23	2.00	0.43
1:B:489:LYS:CB	1:B:489:LYS:NZ	2.81	0.43
1:C:63:ILE:HG21	1:C:69:LEU:HG	2.00	0.43
1:D:606:GLN:NE2	3:D:894:HOH:O	2.50	0.43
1:A:289:ALA:HA	1:A:294:LEU:HG	2.00	0.43
1:A:693:GLU:OE1	1:A:696:LYS:HE3	2.18	0.43
1:C:110:ASP:HB3	1:C:112:GLN:HB2	2.00	0.43
1:C:530:LEU:HA	1:C:531:PRO:HD3	1.86	0.43
1:D:140:ARG:NH1	1:D:140:ARG:HG2	2.34	0.43
1:D:177:GLU:CB	1:D:180:LEU:HD13	2.48	0.43
1:D:273:THR:HA	1:D:276:LEU:HD13	2.00	0.43
1:D:438:ASP:C	1:D:440:THR:H	2.21	0.43
1:D:486:VAL:HG13	3:D:1060:HOH:O	2.17	0.43
1:D:559:PHE:CZ	1:D:561:LEU:HD13	2.54	0.43
1:D:64:SER:C	1:D:463:LYS:HG2	2.39	0.43
1:A:343:ARG:HA	1:A:389:ILE:O	2.18	0.43
1:B:113:PHE:CE2	1:B:178:PRO:HG2	2.53	0.43
1:B:224:ALA:HB1	1:B:268:PHE:CZ	2.53	0.43
1:C:314:GLN:NE2	1:C:373:LYS:NZ	2.65	0.43
1:D:246:LEU:HD22	1:D:248:TYR:O	2.18	0.43
1:A:236:ILE:CG2	1:A:254:VAL:HG13	2.48	0.43
1:A:415:LEU:HD13	1:A:415:LEU:C	2.38	0.43
1:B:172:ILE:H	1:B:186:THR:CG2	2.26	0.43

Continued on next page...

Continued from previous page...

Atom-1	Atom-2	Interatomic distance (Å)	Clash overlap (Å)
1:C:597:ARG:HG2	3:C:1236:HOH:O	2.17	0.43
1:A:554:LYS:HA	3:A:1580:HOH:O	2.18	0.43
1:B:266:VAL:HG22	1:B:267:LYS:N	2.34	0.43
1:B:684:ARG:HH11	1:B:684:ARG:HG3	1.84	0.43
1:C:341:VAL:O	1:C:342:ALA:HB3	2.19	0.43
1:C:520:ASN:ND2	1:C:520:ASN:O	2.51	0.43
1:D:203:TYR:HA	1:D:207:VAL:CG1	2.47	0.43
1:D:374:ILE:CG2	1:D:382:ARG:HB3	2.49	0.43
1:D:546:VAL:CG2	1:D:547:TYR:N	2.81	0.43
1:A:704:HIS:CE1	1:A:711:VAL:O	2.71	0.43
1:B:159:PRO:HG2	1:B:217:SER:O	2.19	0.43
1:C:516:PHE:CD2	1:C:523:LYS:HB2	2.53	0.43
1:C:69:LEU:HD13	1:C:107:ILE:HD12	2.00	0.43
1:C:751:ILE:O	1:C:755:MET:HG3	2.19	0.43
1:D:528:MET:CE	1:D:530:LEU:HD21	2.49	0.43
1:A:612:GLN:HB3	1:A:612:GLN:HE21	1.54	0.43
1:C:50:LYS:NZ	3:C:1164:HOH:O	2.52	0.43
1:D:658:ARG:HD2	1:D:661:TYR:CE1	2.54	0.43
1:A:147:ARG:HA	3:A:1160:HOH:O	2.19	0.42
1:A:325:MET:HE2	1:A:327:ILE:CG1	2.49	0.42
1:B:60:LEU:C	1:B:60:LEU:HD12	2.40	0.42
1:B:72:GLN:HB2	3:B:2029:HOH:O	2.19	0.42
1:C:125:ARG:HG2	1:C:126:HIS:NE2	2.34	0.42
1:C:388:GLN:HG3	3:C:1105:HOH:O	2.19	0.42
1:D:425:MET:HA	1:D:426:PRO:HD2	1.81	0.42
1:D:528:MET:CE	1:D:574:ILE:HG21	2.49	0.42
1:D:718:GLN:NE2	1:D:718:GLN:HA	2.33	0.42
1:A:231:THR:HB	3:A:1546:HOH:O	2.18	0.42
1:A:71:LYS:HB3	3:A:1164:HOH:O	2.17	0.42
1:B:170:ASN:N	1:B:170:ASN:HD22	2.16	0.42
1:B:336:ARG:NH1	1:B:336:ARG:HG2	2.33	0.42
1:C:600:THR:OG1	1:C:601:PHE:N	2.50	0.42
1:C:651:ILE:CG2	1:C:755:MET:HE3	2.31	0.42
1:D:528:MET:HE1	1:D:530:LEU:HD21	2.01	0.42
1:D:622:LYS:CB	1:D:622:LYS:NZ	2.83	0.42
1:A:224:ALA:HB1	1:A:268:PHE:CZ	2.55	0.42
1:A:236:ILE:O	1:A:253:ARG:HA	2.19	0.42
1:A:90:LEU:O	1:A:90:LEU:HD13	2.19	0.42
1:B:301:CYS:O	1:B:302:ASP:HB2	2.19	0.42
1:B:528:MET:HE2	1:B:530:LEU:HD21	2.02	0.42
1:B:528:MET:HE3	1:B:530:LEU:HD21	2.00	0.42

Continued on next page...

Continued from previous page...

Atom-1	Atom-2	Interatomic distance (Å)	Clash overlap (Å)
3:A:776:HOH:O	1:B:736:THR:HG23	2.19	0.42
1:C:636:THR:O	1:C:640:LEU:HG	2.19	0.42
1:A:110:ASP:C	1:A:112:GLN:H	2.23	0.42
1:B:289:ALA:HB1	1:B:290:PRO:C	2.40	0.42
1:B:70:TYR:HD1	3:B:2373:HOH:O	1.97	0.42
1:C:272:ASN:HD21	1:C:274:ASP:HB2	1.83	0.42
1:C:704:HIS:HE1	1:C:711:VAL:O	2.02	0.42
1:D:183:TYR:CE1	1:D:277:SER:O	2.71	0.42
1:D:341:VAL:HG22	1:D:342:ALA:N	2.34	0.42
1:D:482:LEU:HD23	1:D:483:HIS:H	1.84	0.42
1:D:741:GLY:O	1:D:742:ILE:C	2.58	0.42
1:B:761:GLN:HB3	1:B:761:GLN:HE21	1.61	0.42
1:C:471:ARG:HG2	1:C:480:TYR:CD2	2.54	0.42
1:D:487:ASN:HB2	3:D:1060:HOH:O	2.19	0.42
1:A:140:ARG:CG	1:A:140:ARG:NH1	2.80	0.42
1:B:154:TRP:CE2	1:B:212:SER:HB3	2.55	0.42
1:B:203:TYR:HA	1:B:207:VAL:CG1	2.49	0.42
1:C:110:ASP:HB3	1:C:112:GLN:H	1.84	0.42
1:C:118:TYR:O	1:C:130:ALA:HB1	2.19	0.42
1:C:382:ARG:HH11	1:C:382:ARG:HG2	1.84	0.42
1:C:79:PHE:CD1	1:C:86:SER:HB3	2.54	0.42
1:D:684:ARG:HG3	3:D:1085:HOH:O	2.19	0.42
1:A:253:ARG:NE	3:A:1408:HOH:O	2.39	0.42
1:A:530:LEU:HA	1:A:531:PRO:HD3	1.86	0.42
1:B:305:TRP:CE2	1:B:311:ILE:HD12	2.54	0.42
1:B:520:ASN:O	1:B:521:GLU:HB2	2.20	0.42
1:B:74:ASN:HB2	3:B:2029:HOH:O	2.20	0.42
1:D:415:LEU:HD13	1:D:415:LEU:C	2.39	0.42
1:A:183:TYR:CE1	1:A:278:SER:HA	2.54	0.42
1:B:110:ASP:HB3	1:B:112:GLN:HB2	2.01	0.42
1:B:186:THR:HG21	1:B:196:ASN:CB	2.50	0.42
1:B:402:TRP:CD2	1:B:421:GLU:HB2	2.55	0.42
1:C:622:LYS:HB2	1:C:622:LYS:NZ	2.34	0.42
1:C:93:SER:HA	1:C:96:ASP:OD1	2.20	0.42
1:D:230:ASP:OD1	1:D:264:PRO:HB3	2.19	0.42
1:D:310:ARG:NH1	1:D:329:ASP:OD1	2.52	0.42
1:A:212:SER:HA	3:A:1054:HOH:O	2.20	0.42
1:C:598:LEU:HD22	1:C:631:TYR:OH	2.19	0.42
1:C:90:LEU:C	1:C:90:LEU:HD22	2.40	0.42
1:D:325:MET:CE	1:D:327:ILE:HD11	2.50	0.42
1:A:218:PRO:HB2	1:A:308:GLN:NE2	2.35	0.42

Continued on next page...

Continued from previous page...

Atom-1	Atom-2	Interatomic distance (Å)	Clash overlap (Å)
1:A:325:MET:O	1:A:344:GLN:HA	2.19	0.42
1:A:482:LEU:HD23	1:A:482:LEU:HA	1.84	0.42
1:A:76:ILE:HD12	1:A:90:LEU:CD1	2.35	0.42
1:B:236:ILE:CG2	1:B:254:VAL:HG13	2.49	0.42
1:B:410:LEU:CD1	1:B:415:LEU:HD23	2.43	0.42
1:B:649:CYS:HB3	1:B:699:GLU:HB2	2.01	0.42
1:C:276:LEU:HD22	1:C:276:LEU:H	1.84	0.42
1:C:334:SER:HB3	1:C:336:ARG:HD2	2.01	0.42
1:C:696:LYS:HG2	1:C:728:VAL:HG22	2.02	0.42
1:D:272:ASN:HD22	1:D:273:THR:N	2.18	0.42
1:D:405:ILE:HG13	1:D:429:ARG:CD	2.50	0.42
1:D:459:VAL:HG23	1:D:469:GLN:O	2.19	0.42
1:D:60:LEU:HB2	1:D:68:TYR:CD1	2.55	0.42
1:A:546:VAL:CG2	1:A:547:TYR:N	2.83	0.41
1:A:734:TRP:HE1	1:A:736:THR:HG22	1.85	0.41
1:B:455:GLN:HB2	1:B:475:PRO:HD3	2.02	0.41
1:B:90:LEU:O	1:B:90:LEU:HD22	2.20	0.41
1:C:484:SER:O	1:C:488:ASP:HA	2.20	0.41
1:D:658:ARG:HG2	1:D:661:TYR:CE2	2.55	0.41
1:C:136:ASP:CG	1:C:139:LYS:HG2	2.40	0.41
1:C:192:ASP:O	1:C:193:ILE:HD13	2.20	0.41
1:C:693:GLU:HB3	3:C:1054:HOH:O	2.20	0.41
1:D:415:LEU:HB2	1:D:436:LEU:HD11	2.01	0.41
1:D:615:LYS:CB	3:D:1373:HOH:O	2.59	0.41
1:A:302:ASP:HB3	1:A:314:GLN:HB2	2.01	0.41
1:A:452:GLU:HB2	3:A:1399:HOH:O	2.20	0.41
1:A:718:GLN:HA	1:A:718:GLN:HE21	1.86	0.41
1:B:119:ASN:HD22	1:B:131:SER:CB	2.32	0.41
1:B:216:TRP:HB2	3:B:2115:HOH:O	2.20	0.41
1:B:720:SER:O	1:B:724:VAL:HG23	2.20	0.41
1:C:331:ASP:O	1:C:332:GLU:C	2.59	0.41
1:C:596:ARG:HA	1:C:670:TYR:O	2.20	0.41
1:D:327:ILE:HB	1:D:343:ARG:HG2	2.02	0.41
1:D:397:ILE:HG13	1:D:398:THR:HG23	2.01	0.41
1:B:448:GLU:HG3	3:B:1827:HOH:O	2.20	0.41
1:B:461:PHE:CD2	1:B:468:TYR:HB3	2.55	0.41
1:C:184:ARG:HD2	1:C:187:TRP:CE2	2.55	0.41
1:D:110:ASP:OD2	1:D:112:GLN:NE2	2.53	0.41
1:D:459:VAL:CG2	1:D:460:SER:N	2.81	0.41
1:D:579:ASP:HB3	1:D:583:SER:OG	2.21	0.41
1:A:277:SER:HB2	1:A:278:SER:H	1.64	0.41

Continued on next page...

Continued from previous page...

Atom-1	Atom-2	Interatomic distance (Å)	Clash overlap (Å)
1:A:341:VAL:O	1:A:342:ALA:HB2	2.16	0.41
1:A:520:ASN:O	1:A:521:GLU:HB2	2.20	0.41
1:A:581:ARG:NE	1:A:605:ASP:OD2	2.46	0.41
1:B:64:SER:O	1:B:463:LYS:HG2	2.20	0.41
1:B:65:ASP:HA	1:B:462:SER:HB2	2.02	0.41
3:A:776:HOH:O	1:B:736:THR:CG2	2.67	0.41
1:C:341:VAL:C	1:C:343:ARG:N	2.73	0.41
1:C:626:ILE:HG23	1:C:636:THR:HG23	2.03	0.41
1:A:150:ASN:O	1:A:151:ASN:HB2	2.20	0.41
1:A:134:ILE:HG21	1:A:178:PRO:HB3	2.02	0.41
1:A:674:PRO:O	1:A:680:LEU:HD13	2.20	0.41
1:B:160:VAL:CG2	1:B:161:GLY:N	2.79	0.41
1:B:536:LYS:CB	1:B:536:LYS:NZ	2.83	0.41
1:B:54:ARG:HG2	3:B:2202:HOH:O	2.20	0.41
1:B:704:HIS:CD2	1:B:716:SER:OG	2.71	0.41
1:B:755:MET:HE2	1:B:755:MET:HB3	1.96	0.41
1:C:176:ILE:HD13	1:C:183:TYR:CE2	2.56	0.41
1:D:40:ARG:HH11	1:D:40:ARG:CG	2.33	0.41
1:D:554:LYS:HG2	3:D:1434:HOH:O	2.20	0.41
1:D:236:ILE:HG12	1:D:712:HIS:CE1	2.56	0.41
1:A:204:GLU:O	1:A:209:SER:HA	2.21	0.41
1:A:528:MET:HE1	1:A:618:PHE:HE1	1.86	0.41
1:B:109:PRO:HG2	1:B:161:GLY:O	2.21	0.41
1:C:160:VAL:HG23	1:C:161:GLY:N	2.36	0.41
1:C:289:ALA:HA	1:C:294:LEU:HD11	2.03	0.41
1:C:322:TYR:OH	1:C:346:ILE:HD13	2.21	0.41
1:B:152:THR:HG23	1:B:167:VAL:O	2.20	0.41
1:B:159:PRO:HG3	3:B:2115:HOH:O	2.21	0.41
1:B:464:GLU:O	1:B:465:ALA:HB3	2.21	0.41
1:C:123:GLN:HG2	1:C:124:TRP:N	2.35	0.41
1:D:154:TRP:CE2	1:D:212:SER:HB2	2.55	0.41
1:A:159:PRO:HD3	1:A:216:TRP:CB	2.50	0.41
1:A:291:ALA:C	1:A:293:MET:H	2.24	0.41
1:B:40:ARG:HB2	1:B:506:ASN:O	2.20	0.41
1:B:526:TYR:HB3	1:B:578:PHE:HD1	1.86	0.41
1:B:627:TRP:CE3	1:B:755:MET:HE3	2.56	0.41
1:C:377:ASN:HB2	1:C:381:TYR:N	2.35	0.41
1:D:436:LEU:HG	3:D:1418:HOH:O	2.20	0.41
1:A:114:ILE:HG13	1:A:137:LEU:HD11	2.02	0.41
1:B:377:ASN:ND2	1:B:383:HIS:CD2	2.89	0.41
1:C:235:LEU:HD13	3:C:1211:HOH:O	2.21	0.41

Continued on next page...

Continued from previous page...

Atom-1	Atom-2	Interatomic distance (Å)	Clash overlap (Å)
1:D:455:GLN:HG3	1:D:475:PRO:HD2	2.03	0.41
1:A:392:LYS:HG2	3:A:1573:HOH:O	2.21	0.41
1:A:79:PHE:CD1	1:A:86:SER:HB3	2.56	0.41
1:A:91:GLU:HG2	3:A:1505:HOH:O	2.21	0.41
1:B:411:THR:HB	3:B:2372:HOH:O	2.20	0.41
1:C:658:ARG:HG3	1:C:658:ARG:O	2.19	0.41
1:D:65:ASP:HA	1:D:462:SER:HB2	2.02	0.41
1:B:148:ILE:HA	1:B:149:PRO:HD3	1.95	0.40
1:C:425:MET:HA	1:C:426:PRO:HD2	1.83	0.40
1:C:65:ASP:CG	1:C:464:GLU:HB2	2.42	0.40
1:C:633:GLY:HA3	1:C:655:PRO:HB3	2.04	0.40
1:D:316:LEU:CD2	1:D:320:GLN:HG2	2.51	0.40
1:D:603:VAL:HG23	1:D:639:VAL:HG22	2.01	0.40
1:A:281:ASN:O	1:A:282:ALA:C	2.59	0.40
1:A:293:MET:HG2	1:A:315:TRP:HB3	2.04	0.40
1:B:741:GLY:O	1:B:742:ILE:C	2.58	0.40
1:C:170:ASN:O	1:C:196:ASN:HB2	2.22	0.40
1:C:176:ILE:HD13	1:C:183:TYR:HE2	1.86	0.40
1:C:514:LEU:HA	1:C:514:LEU:HD23	1.90	0.40
1:B:242:SER:HB3	1:B:246:LEU:HD12	2.02	0.40
1:B:306:ALA:HB3	1:B:310:ARG:HB3	2.03	0.40
1:C:544:LEU:HD23	1:C:626:ILE:HD12	2.04	0.40
1:D:40:ARG:HD2	1:D:40:ARG:H	1.85	0.40
1:D:438:ASP:OD2	1:D:440:THR:HG22	2.22	0.40
1:D:483:HIS:HD2	3:D:1040:HOH:O	2.04	0.40
1:D:684:ARG:HA	1:D:684:ARG:HD3	1.90	0.40
1:D:718:GLN:HE21	1:D:718:GLN:CA	2.31	0.40
1:B:109:PRO:HG2	1:B:160:VAL:O	2.21	0.40
1:B:156:THR:HG21	1:B:214:LEU:HD11	2.03	0.40
1:B:331:ASP:HB3	1:B:334:SER:HB2	2.02	0.40
1:B:739:ASP:HB2	3:B:1667:HOH:O	2.22	0.40
1:C:175:LYS:NZ	3:C:1423:HOH:O	2.54	0.40
1:B:162:HIS:HD2	1:B:178:PRO:HD3	1.86	0.40
1:C:358:ARG:HG2	1:C:358:ARG:NH1	2.35	0.40
1:D:159:PRO:HD3	1:D:216:TRP:CB	2.52	0.40

There are no symmetry-related clashes.

5.3 Torsion angles [i](#)

5.3.1 Protein backbone [i](#)

In the following table, the Percentiles column shows the percent Ramachandran outliers of the chain as a percentile score with respect to all X-ray entries followed by that with respect to entries of similar resolution.

The Analysed column shows the number of residues for which the backbone conformation was analysed, and the total number of residues.

Mol	Chain	Analysed	Favoured	Allowed	Outliers	Percentiles	
1	A	724/726 (100%)	666 (92%)	50 (7%)	8 (1%)	14	20
1	B	724/726 (100%)	662 (91%)	54 (8%)	8 (1%)	14	20
1	C	724/726 (100%)	665 (92%)	50 (7%)	9 (1%)	13	19
1	D	724/726 (100%)	657 (91%)	57 (8%)	10 (1%)	11	15
All	All	2896/2904 (100%)	2650 (92%)	211 (7%)	35 (1%)	13	19

All (35) Ramachandran outliers are listed below:

Mol	Chain	Res	Type
1	A	40	ARG
1	A	278	SER
1	A	289	ALA
1	B	277	SER
1	B	278	SER
1	C	40	ARG
1	C	278	SER
1	D	278	SER
1	D	320	GLN
1	A	282	ALA
1	A	342	ALA
1	B	40	ARG
1	B	161	GLY
1	B	289	ALA
1	B	320	GLN
1	C	289	ALA
1	C	320	GLN
1	C	520	ASN
1	D	289	ALA
1	D	334	SER
1	D	486	VAL
1	D	520	ASN

Continued on next page...

Continued from previous page...

Mol	Chain	Res	Type
1	D	521	GLU
1	B	334	SER
1	B	520	ASN
1	C	138	ASN
1	C	332	GLU
1	C	536	LYS
1	D	91	GLU
1	D	161	GLY
1	A	277	SER
1	A	320	GLN
1	A	520	ASN
1	D	389	ILE
1	C	486	VAL

5.3.2 Protein sidechains [i](#)

In the following table, the Percentiles column shows the percent sidechain outliers of the chain as a percentile score with respect to all X-ray entries followed by that with respect to entries of similar resolution.

The Analysed column shows the number of residues for which the sidechain conformation was analysed, and the total number of residues.

Mol	Chain	Analysed	Rotameric	Outliers	Percentiles	
1	A	651/651 (100%)	600 (92%)	51 (8%)	12	19
1	B	651/651 (100%)	603 (93%)	48 (7%)	13	22
1	C	651/651 (100%)	602 (92%)	49 (8%)	13	21
1	D	651/651 (100%)	606 (93%)	45 (7%)	15	25
All	All	2604/2604 (100%)	2411 (93%)	193 (7%)	13	22

All (193) residues with a non-rotameric sidechain are listed below:

Mol	Chain	Res	Type
1	A	40	ARG
1	A	41	LYS
1	A	51	ASN
1	A	66	HIS
1	A	90	LEU
1	A	92	ASN
1	A	139	LYS
1	A	141	GLN

Continued on next page...

Continued from previous page...

Mol	Chain	Res	Type
1	A	142	LEU
1	A	169	ASN
1	A	170	ASN
1	A	184	ARG
1	A	207	VAL
1	A	246	LEU
1	A	253	ARG
1	A	254	VAL
1	A	272	ASN
1	A	276	LEU
1	A	277	SER
1	A	303	VAL
1	A	336	ARG
1	A	341	VAL
1	A	385	CYS
1	A	388	GLN
1	A	391	LYS
1	A	435	GLN
1	A	436	LEU
1	A	440	THR
1	A	442	VAL
1	A	448	GLU
1	A	472	CYS
1	A	482	LEU
1	A	487	ASN
1	A	514	LEU
1	A	520	ASN
1	A	523	LYS
1	A	536	LYS
1	A	543	LEU
1	A	561	LEU
1	A	581	ARG
1	A	583	SER
1	A	608	GLU
1	A	612	GLN
1	A	658	ARG
1	A	673	LEU
1	A	685	ASN
1	A	689	MET
1	A	701	LEU
1	A	702	LEU
1	A	736	THR

Continued on next page...

Continued from previous page...

Mol	Chain	Res	Type
1	A	761	GLN
1	B	40	ARG
1	B	41	LYS
1	B	51	ASN
1	B	90	LEU
1	B	105	TYR
1	B	110	ASP
1	B	141	GLN
1	B	142	LEU
1	B	145	GLU
1	B	170	ASN
1	B	207	VAL
1	B	246	LEU
1	B	253	ARG
1	B	254	VAL
1	B	272	ASN
1	B	276	LEU
1	B	280	THR
1	B	293	MET
1	B	303	VAL
1	B	313	LEU
1	B	326	ASP
1	B	332	GLU
1	B	336	ARG
1	B	373	LYS
1	B	385	CYS
1	B	391	LYS
1	B	436	LEU
1	B	440	THR
1	B	442	VAL
1	B	448	GLU
1	B	472	CYS
1	B	482	LEU
1	B	507	VAL
1	B	514	LEU
1	B	536	LYS
1	B	543	LEU
1	B	561	LEU
1	B	566	TYR
1	B	603	VAL
1	B	658	ARG
1	B	673	LEU

Continued on next page...

Continued from previous page...

Mol	Chain	Res	Type
1	B	689	MET
1	B	701	LEU
1	B	702	LEU
1	B	726	VAL
1	B	731	GLN
1	B	736	THR
1	B	761	GLN
1	C	40	ARG
1	C	41	LYS
1	C	51	ASN
1	C	90	LEU
1	C	110	ASP
1	C	125	ARG
1	C	145	GLU
1	C	170	ASN
1	C	184	ARG
1	C	207	VAL
1	C	230	ASP
1	C	246	LEU
1	C	253	ARG
1	C	254	VAL
1	C	272	ASN
1	C	276	LEU
1	C	293	MET
1	C	303	VAL
1	C	326	ASP
1	C	336	ARG
1	C	376	SER
1	C	385	CYS
1	C	390	ASP
1	C	392	LYS
1	C	413	ASP
1	C	436	LEU
1	C	440	THR
1	C	448	GLU
1	C	472	CYS
1	C	482	LEU
1	C	507	VAL
1	C	514	LEU
1	C	523	LYS
1	C	536	LYS
1	C	538	LYS

Continued on next page...

Continued from previous page...

Mol	Chain	Res	Type
1	C	543	LEU
1	C	561	LEU
1	C	581	ARG
1	C	589	LYS
1	C	603	VAL
1	C	655	PRO
1	C	658	ARG
1	C	663	ASP
1	C	679	ASN
1	C	689	MET
1	C	701	LEU
1	C	702	LEU
1	C	736	THR
1	C	761	GLN
1	D	40	ARG
1	D	41	LYS
1	D	51	ASN
1	D	90	LEU
1	D	91	GLU
1	D	103	ASN
1	D	104	ASP
1	D	125	ARG
1	D	184	ARG
1	D	207	VAL
1	D	246	LEU
1	D	253	ARG
1	D	254	VAL
1	D	272	ASN
1	D	276	LEU
1	D	293	MET
1	D	303	VAL
1	D	326	ASP
1	D	329	ASP
1	D	332	GLU
1	D	336	ARG
1	D	385	CYS
1	D	388	GLN
1	D	390	ASP
1	D	440	THR
1	D	448	GLU
1	D	472	CYS
1	D	482	LEU

Continued on next page...

Continued from previous page...

Mol	Chain	Res	Type
1	D	505	GLN
1	D	514	LEU
1	D	523	LYS
1	D	536	LYS
1	D	561	LEU
1	D	581	ARG
1	D	597	ARG
1	D	603	VAL
1	D	622	LYS
1	D	658	ARG
1	D	679	ASN
1	D	689	MET
1	D	701	LEU
1	D	702	LEU
1	D	726	VAL
1	D	736	THR
1	D	761	GLN

Some sidechains can be flipped to improve hydrogen bonding and reduce clashes. All (86) such sidechains are listed below:

Mol	Chain	Res	Type
1	A	51	ASN
1	A	72	GLN
1	A	92	ASN
1	A	169	ASN
1	A	170	ASN
1	A	247	GLN
1	A	272	ASN
1	A	314	GLN
1	A	345	HIS
1	A	369	ASN
1	A	435	GLN
1	A	483	HIS
1	A	533	HIS
1	A	612	GLN
1	A	679	ASN
1	A	694	ASN
1	A	704	HIS
1	A	718	GLN
1	A	761	GLN
1	B	51	ASN
1	B	72	GLN

Continued on next page...

Continued from previous page...

Mol	Chain	Res	Type
1	B	119	ASN
1	B	123	GLN
1	B	150	ASN
1	B	169	ASN
1	B	170	ASN
1	B	247	GLN
1	B	272	ASN
1	B	314	GLN
1	B	369	ASN
1	B	377	ASN
1	B	483	HIS
1	B	487	ASN
1	B	572	ASN
1	B	612	GLN
1	B	679	ASN
1	B	694	ASN
1	B	704	HIS
1	B	718	GLN
1	B	761	GLN
1	C	51	ASN
1	C	72	GLN
1	C	169	ASN
1	C	170	ASN
1	C	247	GLN
1	C	263	ASN
1	C	272	ASN
1	C	286	GLN
1	C	314	GLN
1	C	377	ASN
1	C	383	HIS
1	C	388	GLN
1	C	435	GLN
1	C	483	HIS
1	C	487	ASN
1	C	505	GLN
1	C	533	HIS
1	C	572	ASN
1	C	586	GLN
1	C	606	GLN
1	C	612	GLN
1	C	679	ASN
1	C	694	ASN

Continued on next page...

Continued from previous page...

Mol	Chain	Res	Type
1	C	704	HIS
1	C	718	GLN
1	C	761	GLN
1	D	72	GLN
1	D	112	GLN
1	D	138	ASN
1	D	169	ASN
1	D	170	ASN
1	D	247	GLN
1	D	272	ASN
1	D	314	GLN
1	D	369	ASN
1	D	388	GLN
1	D	483	HIS
1	D	487	ASN
1	D	505	GLN
1	D	606	GLN
1	D	612	GLN
1	D	679	ASN
1	D	694	ASN
1	D	704	HIS
1	D	718	GLN
1	D	761	GLN

5.3.3 RNA [i](#)

There are no RNA molecules in this entry.

5.4 Non-standard residues in protein, DNA, RNA chains [i](#)

There are no non-standard protein/DNA/RNA residues in this entry.

5.5 Carbohydrates [i](#)

There are no monosaccharides in this entry.

5.6 Ligand geometry [i](#)

1 ligand is modelled in this entry.

In the following table, the Counts columns list the number of bonds (or angles) for which Mogul statistics could be retrieved, the number of bonds (or angles) that are observed in the model and the number of bonds (or angles) that are defined in the Chemical Component Dictionary. The Link column lists molecule types, if any, to which the group is linked. The Z score for a bond length (or angle) is the number of standard deviations the observed value is removed from the expected value. A bond length (or angle) with $|Z| > 2$ is considered an outlier worth inspection. RMSZ is the root-mean-square of all Z scores of the bond lengths (or angles).

Mol	Type	Chain	Res	Link	Bond lengths			Bond angles		
					Counts	RMSZ	# Z > 2	Counts	RMSZ	# Z > 2
2	AXD	B	1630	1	25,31,31	1.62	6 (24%)	30,44,44	1.77	5 (16%)

In the following table, the Chirals column lists the number of chiral outliers, the number of chiral centers analysed, the number of these observed in the model and the number defined in the Chemical Component Dictionary. Similar counts are reported in the Torsion and Rings columns. '-' means no outliers of that kind were identified.

Mol	Type	Chain	Res	Link	Chirals	Torsions	Rings
2	AXD	B	1630	1	-	3/16/47/47	0/3/3/3

All (6) bond length outliers are listed below:

Mol	Chain	Res	Type	Atoms	Z	Observed(Å)	Ideal(Å)
2	B	1630	AXD	C4-N5	3.49	1.52	1.46
2	B	1630	AXD	C13-N14	-3.30	1.34	1.48
2	B	1630	AXD	C18-N23	2.54	1.39	1.34
2	B	1630	AXD	C6-N5	2.25	1.50	1.46
2	B	1630	AXD	C26-C2	2.18	1.57	1.53
2	B	1630	AXD	C15-N9	2.09	1.38	1.36

All (5) bond angle outliers are listed below:

Mol	Chain	Res	Type	Atoms	Z	Observed(°)	Ideal(°)
2	B	1630	AXD	C20-C19-C18	6.50	120.55	118.25
2	B	1630	AXD	C26-C2-N1	-2.51	108.87	113.91
2	B	1630	AXD	C22-N23-C18	2.45	120.10	116.86
2	B	1630	AXD	C6-N5-C4	2.36	116.73	111.52
2	B	1630	AXD	C4-C3-C2	-2.29	110.57	113.01

There are no chirality outliers.

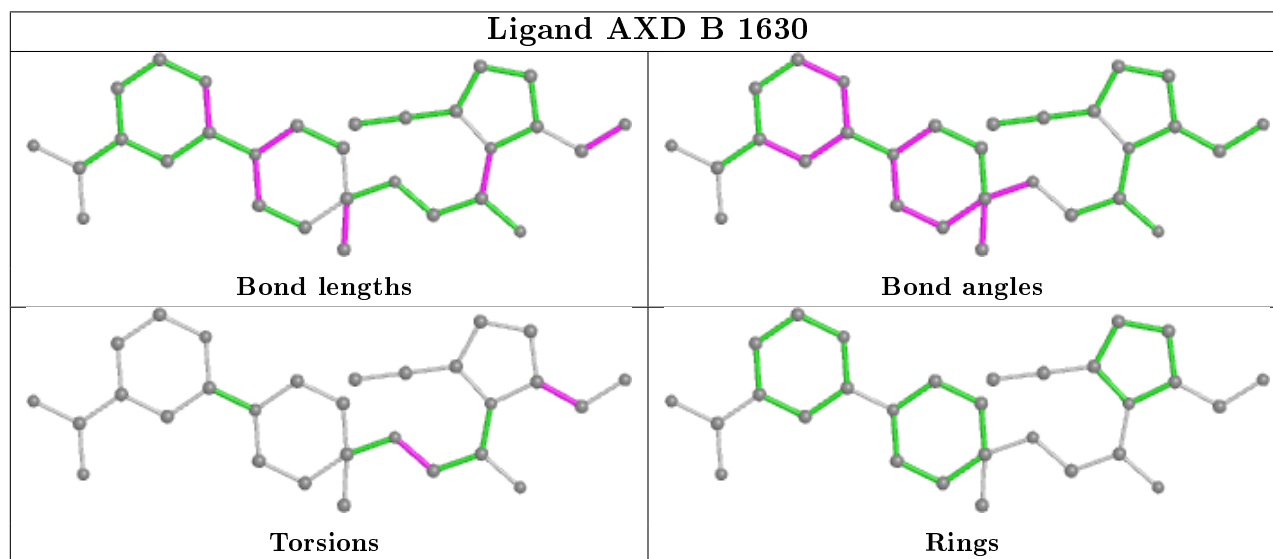
All (3) torsion outliers are listed below:

Mol	Chain	Res	Type	Atoms
2	B	1630	AXD	N9-C10-C13-N14
2	B	1630	AXD	C11-C10-C13-N14
2	B	1630	AXD	C15-C17-N1-C2

There are no ring outliers.

No monomer is involved in short contacts.

The following is a two-dimensional graphical depiction of Mogul quality analysis of bond lengths, bond angles, torsion angles, and ring geometry for all instances of the Ligand of Interest. In addition, ligands with molecular weight > 250 and outliers as shown on the validation Tables will also be included. For torsion angles, if less than 5% of the Mogul distribution of torsion angles is within 10 degrees of the torsion angle in question, then that torsion angle is considered an outlier. Any bond that is central to one or more torsion angles identified as an outlier by Mogul will be highlighted in the graph. For rings, the root-mean-square deviation (RMSD) between the ring in question and similar rings identified by Mogul is calculated over all ring torsion angles. If the average RMSD is greater than 60 degrees and the minimal RMSD between the ring in question and any Mogul-identified rings is also greater than 60 degrees, then that ring is considered an outlier. The outliers are highlighted in purple. The color gray indicates Mogul did not find sufficient equivalents in the CSD to analyse the geometry.



5.7 Other polymers [i](#)

There are no such residues in this entry.

5.8 Polymer linkage issues [i](#)

There are no chain breaks in this entry.

6 Fit of model and data

6.1 Protein, DNA and RNA chains

In the following table, the column labelled ‘#RSRZ> 2’ contains the number (and percentage) of RSRZ outliers, followed by percent RSRZ outliers for the chain as percentile scores relative to all X-ray entries and entries of similar resolution. The OWAB column contains the minimum, median, 95th percentile and maximum values of the occupancy-weighted average B-factor per residue. The column labelled ‘Q< 0.9’ lists the number of (and percentage) of residues with an average occupancy less than 0.9.

Mol	Chain	Analysed	<RSRZ>	#RSRZ>2	OWAB(Å ²)	Q<0.9
1	A	726/726 (100%)	-0.39	15 (2%) 63 61	22, 41, 81, 170	0
1	B	726/726 (100%)	-0.41	17 (2%) 60 58	23, 43, 89, 134	0
1	C	726/726 (100%)	-0.27	17 (2%) 60 58	27, 49, 93, 169	0
1	D	726/726 (100%)	-0.25	26 (3%) 42 42	26, 48, 94, 144	0
All	All	2904/2904 (100%)	-0.33	75 (2%) 56 54	22, 45, 90, 170	0

All (75) RSRZ outliers are listed below:

Mol	Chain	Res	Type	RSRZ
1	A	278	SER	10.7
1	A	279	VAL	10.6
1	C	39	SER	10.0
1	C	73	GLU	7.8
1	A	39	SER	7.1
1	A	73	GLU	6.2
1	A	280	THR	6.0
1	B	73	GLU	5.9
1	D	278	SER	5.6
1	B	39	SER	5.6
1	A	281	ASN	5.4
1	D	73	GLU	4.4
1	A	277	SER	4.4
1	A	40	ARG	4.2
1	D	39	SER	4.2
1	C	333	SER	4.1
1	C	40	ARG	4.1
1	C	138	ASN	4.1
1	B	74	ASN	3.9
1	A	282	ALA	3.8
1	D	74	ASN	3.7

Continued on next page...

Continued from previous page...

Mol	Chain	Res	Type	RSRZ
1	C	74	ASN	3.6
1	A	333	SER	3.6
1	D	279	VAL	3.5
1	D	97	GLU	3.4
1	D	333	SER	3.4
1	D	99	GLY	3.4
1	D	92	ASN	3.2
1	D	72	GLN	3.1
1	B	97	GLU	3.1
1	B	72	GLN	2.9
1	B	487	ASN	2.9
1	B	71	LYS	2.8
1	B	280	THR	2.7
1	C	332	GLU	2.7
1	D	277	SER	2.7
1	D	281	ASN	2.6
1	C	71	LYS	2.6
1	D	83	TYR	2.6
1	D	468	TYR	2.6
1	C	140	ARG	2.6
1	B	105	TYR	2.5
1	A	74	ASN	2.5
1	C	391	LYS	2.5
1	C	334	SER	2.5
1	D	289	ALA	2.5
1	C	392	LYS	2.4
1	D	336	ARG	2.4
1	B	333	SER	2.4
1	B	114	ILE	2.4
1	A	72	GLN	2.3
1	A	71	LYS	2.3
1	D	98	PHE	2.3
1	D	116	LEU	2.3
1	D	437	SER	2.3
1	D	96	ASP	2.3
1	C	72	GLN	2.2
1	C	96	ASP	2.2
1	D	392	LYS	2.2
1	C	92	ASN	2.2
1	C	440	THR	2.2
1	B	334	SER	2.2
1	B	502	LYS	2.2

Continued on next page...

Continued from previous page...

Mol	Chain	Res	Type	RSRZ
1	A	506	ASN	2.2
1	B	277	SER	2.2
1	B	99	GLY	2.2
1	D	91	GLU	2.2
1	C	87	SER	2.1
1	D	280	THR	2.1
1	B	96	ASP	2.1
1	D	88	VAL	2.0
1	A	276	LEU	2.0
1	D	521	GLU	2.0
1	D	71	LYS	2.0
1	B	332	GLU	2.0

6.2 Non-standard residues in protein, DNA, RNA chains [i](#)

There are no non-standard protein/DNA/RNA residues in this entry.

6.3 Carbohydrates [i](#)

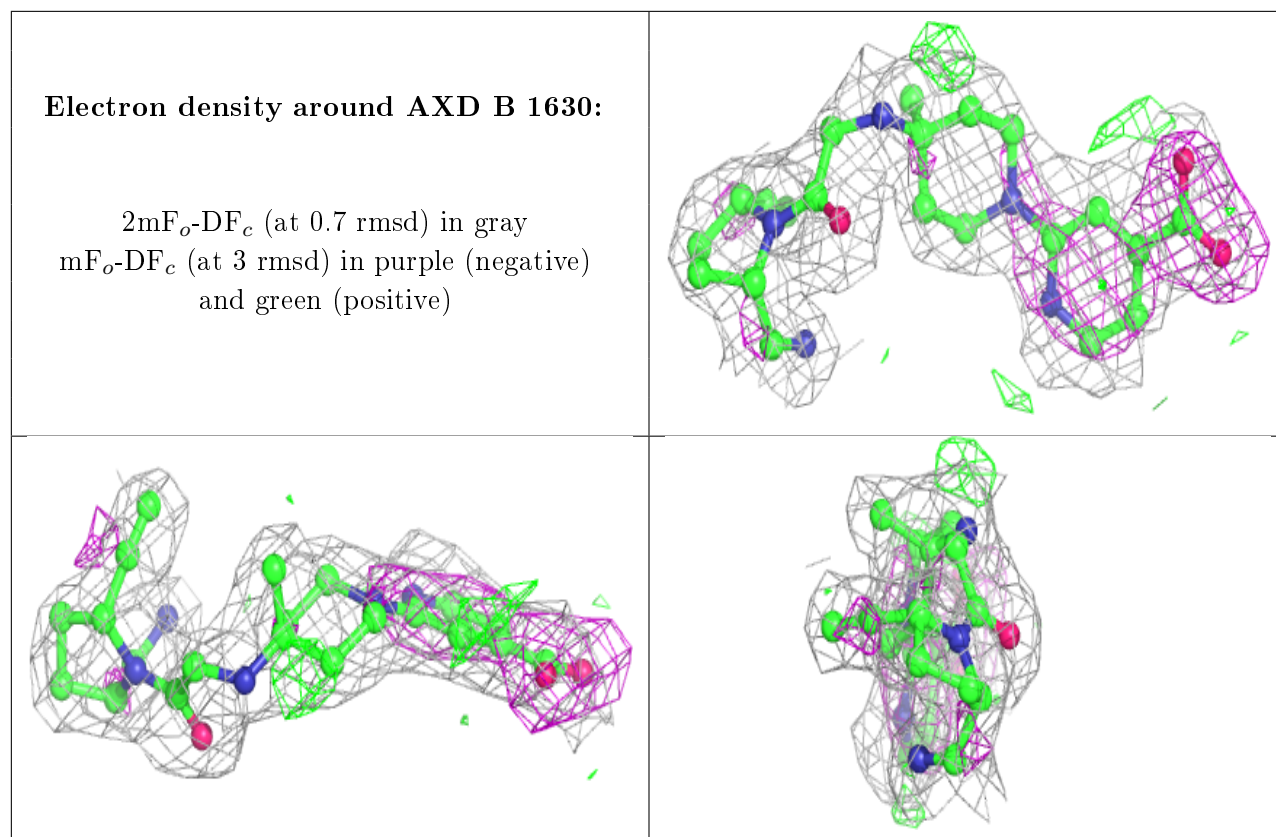
There are no monosaccharides in this entry.

6.4 Ligands [i](#)

In the following table, the Atoms column lists the number of modelled atoms in the group and the number defined in the chemical component dictionary. The B-factors column lists the minimum, median, 95th percentile and maximum values of B factors of atoms in the group. The column labelled 'Q< 0.9' lists the number of atoms with occupancy less than 0.9.

Mol	Type	Chain	Res	Atoms	RSCC	RSR	B-factors(Å ²)	Q<0.9
2	AXD	B	1630	29/29	0.79	0.20	31,31,31,31	0

The following is a graphical depiction of the model fit to experimental electron density of all instances of the Ligand of Interest. In addition, ligands with molecular weight > 250 and outliers as shown on the geometry validation Tables will also be included. Each fit is shown from different orientation to approximate a three-dimensional view.



6.5 Other polymers [i](#)

There are no such residues in this entry.