



wwPDB X-ray Structure Validation Summary Report ⓘ

Jan 14, 2024 – 05:16 am GMT

PDB ID : 6HWB
Title : Yeast 20S proteasome in complex with 44b
Authors : Huber, E.M.; Groll, M.
Deposited on : 2018-10-11
Resolution : 2.60 Å(reported)

This is a wwPDB X-ray Structure Validation Summary Report for a publicly released PDB entry.

We welcome your comments at validation@mail.wwpdb.org

A user guide is available at

<https://www.wwpdb.org/validation/2017/XrayValidationReportHelp>

with specific help available everywhere you see the ⓘ symbol.

The types of validation reports are described at

<http://www.wwpdb.org/validation/2017/FAQs#types>.

The following versions of software and data (see [references ⓘ](#)) were used in the production of this report:

MolProbity : 4.02b-467
Mogul : 1.8.4, CSD as541be (2020)
Xtriage (Phenix) : 1.13
EDS : 2.36
buster-report : 1.1.7 (2018)
Percentile statistics : 20191225.v01 (using entries in the PDB archive December 25th 2019)
Refmac : 5.8.0158
CCP4 : 7.0.044 (Gargrove)
Ideal geometry (proteins) : Engh & Huber (2001)
Ideal geometry (DNA, RNA) : Parkinson et al. (1996)
Validation Pipeline (wwPDB-VP) : 2.36

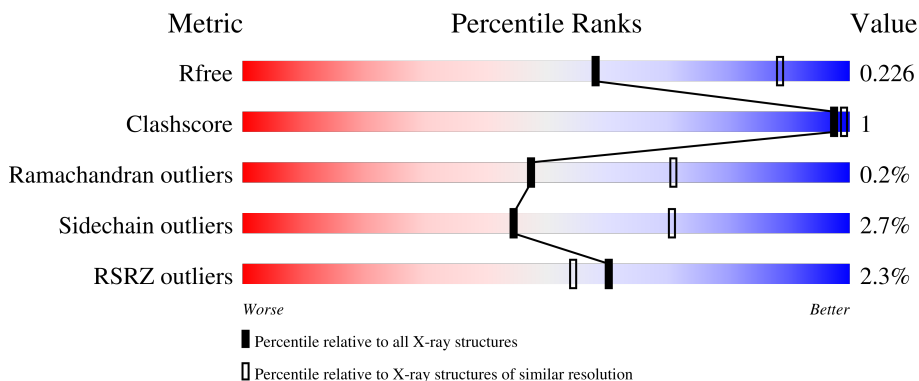
1 Overall quality at a glance

The following experimental techniques were used to determine the structure:

X-RAY DIFFRACTION

The reported resolution of this entry is 2.60 Å.

Percentile scores (ranging between 0-100) for global validation metrics of the entry are shown in the following graphic. The table shows the number of entries on which the scores are based.



Metric	Whole archive (#Entries)	Similar resolution (#Entries, resolution range(Å))
R_{free}	130704	3163 (2.60-2.60)
Clashscore	141614	3518 (2.60-2.60)
Ramachandran outliers	138981	3455 (2.60-2.60)
Sidechain outliers	138945	3455 (2.60-2.60)
RSRZ outliers	127900	3104 (2.60-2.60)

The table below summarises the geometric issues observed across the polymeric chains and their fit to the electron density. The red, orange, yellow and green segments of the lower bar indicate the fraction of residues that contain outliers for ≥ 3 , 2, 1 and 0 types of geometric quality criteria respectively. A grey segment represents the fraction of residues that are not modelled. The numeric value for each fraction is indicated below the corresponding segment, with a dot representing fractions $\leq 5\%$. The upper red bar (where present) indicates the fraction of residues that have poor fit to the electron density. The numeric value is given above the bar.

Mol	Chain	Length	Quality of chain
1	A	250	 2% 98%
1	O	250	 3% 98%
2	B	258	 4% 91% 5%
2	P	258	 4% 91% 5%
3	C	254	 6% 91% 6%

Continued on next page...

Continued from previous page...

Mol	Chain	Length	Quality of chain
3	Q	254	8% 91% 6%
4	D	260	% 87% 10%
4	R	260	2% 87% 10%
5	E	234	3% 95% ..
5	S	234	4% 95% ..
6	F	288	2% 81% .. 16%
6	T	288	3% 81% .. 16%
7	G	252	3% 92% ..
7	U	252	2% 92% ..
8	H	232	% 92% ..
8	V	232	% 94% ..
9	I	205	% 94% 5%
9	W	205	% 95% 5%
10	J	198	2% 92% 5% ..
10	X	198	2% 92% 5% ..
11	K	212	95% ..
11	Y	212	% 94% 5% ..
12	L	222	96% .
12	Z	222	% 95% 5%
13	M	246	% 93% .. 5%
13	a	246	92% .. 5%
14	N	196	% 96% .
14	b	196	% 99% .

The following table lists non-polymeric compounds, carbohydrate monomers and non-standard residues in protein, DNA, RNA chains that are outliers for geometric or electron-density-fit criteria:

Mol	Type	Chain	Res	Chirality	Geometry	Clashes	Electron density
17	GWT	H	301	-	-	-	X
17	GWT	V	301	-	-	-	X

2 Entry composition

There are 19 unique types of molecules in this entry. The entry contains 50234 atoms, of which 0 are hydrogens and 0 are deuteriums.

In the tables below, the ZeroOcc column contains the number of atoms modelled with zero occupancy, the AltConf column contains the number of residues with at least one atom in alternate conformation and the Trace column contains the number of residues modelled with at most 2 atoms.

- Molecule 1 is a protein called Proteasome subunit alpha type-2.

Mol	Chain	Residues	Atoms					ZeroOcc	AltConf	Trace
			Total	C	N	O	S			
1	A	250	Total 1915	C 1219	N 315	O 377	S 4	0	0	0
1	O	250	Total 1915	C 1219	N 315	O 377	S 4	0	0	0

- Molecule 2 is a protein called Proteasome subunit alpha type-3.

Mol	Chain	Residues	Atoms					ZeroOcc	AltConf	Trace
			Total	C	N	O	S			
2	B	244	Total 1904	C 1201	N 321	O 379	S 3	0	0	0
2	P	244	Total 1904	C 1201	N 321	O 379	S 3	0	0	0

- Molecule 3 is a protein called Proteasome subunit alpha type-4.

Mol	Chain	Residues	Atoms					ZeroOcc	AltConf	Trace
			Total	C	N	O	S			
3	C	240	Total 1881	C 1176	N 329	O 372	S 4	0	0	0
3	Q	240	Total 1881	C 1176	N 329	O 372	S 4	0	0	0

- Molecule 4 is a protein called Proteasome subunit alpha type-5.

Mol	Chain	Residues	Atoms					ZeroOcc	AltConf	Trace
			Total	C	N	O	S			
4	D	235	Total 1813	C 1136	N 304	O 366	S 7	0	0	0
4	R	235	Total 1813	C 1136	N 304	O 366	S 7	0	0	0

- Molecule 5 is a protein called Proteasome subunit alpha type-6.

Mol	Chain	Residues	Atoms					ZeroOcc	AltConf	Trace
			Total	C	N	O	S			
5	E	231	1773	1114	307	348	4	0	0	0
5	S	231	1773	1114	307	348	4	0	0	0

- Molecule 6 is a protein called Probable proteasome subunit alpha type-7.

Mol	Chain	Residues	Atoms					ZeroOcc	AltConf	Trace
			Total	C	N	O	S			
6	F	243	1892	1203	329	356	4	0	0	0
6	T	243	1892	1203	329	356	4	0	0	0

- Molecule 7 is a protein called Proteasome subunit alpha type-1.

Mol	Chain	Residues	Atoms					ZeroOcc	AltConf	Trace
			Total	C	N	O	S			
7	G	241	1907	1214	320	365	8	0	0	0
7	U	241	1907	1214	320	365	8	0	0	0

- Molecule 8 is a protein called Proteasome subunit beta type-2.

Mol	Chain	Residues	Atoms					ZeroOcc	AltConf	Trace
			Total	C	N	O	S			
8	H	222	1684	1061	293	323	7	0	0	0
8	V	222	1684	1061	293	323	7	0	0	0

- Molecule 9 is a protein called Proteasome subunit beta type-3.

Mol	Chain	Residues	Atoms					ZeroOcc	AltConf	Trace
			Total	C	N	O	S			
9	I	204	1581	1010	258	305	8	0	0	0
9	W	204	1581	1010	258	305	8	0	0	0

- Molecule 10 is a protein called Proteasome subunit beta type-4.

Mol	Chain	Residues	Atoms					ZeroOcc	AltConf	Trace
			Total	C	N	O	S			
10	J	195	1561	992	264	299	6	0	0	0

Continued on next page...

Continued from previous page...

Mol	Chain	Residues	Atoms					ZeroOcc	AltConf	Trace
10	X	195	Total	C	N	O	S	0	0	0
			1561	992	264	299	6			

- Molecule 11 is a protein called Proteasome subunit beta type-5.

Mol	Chain	Residues	Atoms					ZeroOcc	AltConf	Trace
11	K	212	Total	C	N	O	S	0	0	0
			1644	1045	280	312	7			
11	Y	212	Total	C	N	O	S	0	0	0
			1644	1045	280	312	7			

- Molecule 12 is a protein called Proteasome subunit beta type-6.

Mol	Chain	Residues	Atoms					ZeroOcc	AltConf	Trace
12	L	222	Total	C	N	O	S	0	0	0
			1757	1115	303	335	4			
12	Z	222	Total	C	N	O	S	0	0	0
			1757	1115	303	335	4			

- Molecule 13 is a protein called Proteasome subunit beta type-7.

Mol	Chain	Residues	Atoms					ZeroOcc	AltConf	Trace
13	M	233	Total	C	N	O	S	0	0	0
			1824	1154	312	351	7			
13	a	233	Total	C	N	O	S	0	0	0
			1824	1154	312	351	7			

- Molecule 14 is a protein called Proteasome subunit beta type-1.

Mol	Chain	Residues	Atoms					ZeroOcc	AltConf	Trace
14	N	196	Total	C	N	O	S	0	0	0
			1512	955	250	300	7			
14	b	196	Total	C	N	O	S	0	0	0
			1512	955	250	300	7			

- Molecule 15 is MAGNESIUM ION (three-letter code: MG) (formula: Mg).

Mol	Chain	Residues	Atoms		ZeroOcc	AltConf
15	G	1	Total	Mg	0	0
			1	1		
15	I	1	Total	Mg	0	0
			1	1		

Continued on next page...

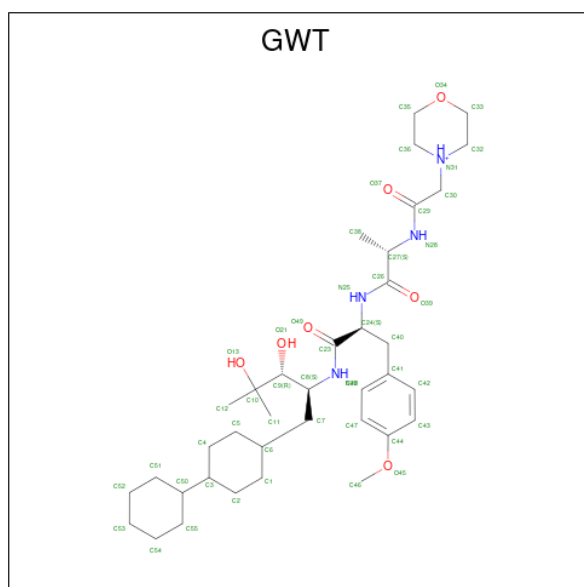
Continued from previous page...

Mol	Chain	Residues	Atoms	ZeroOcc	AltConf
15	K	2	Total Mg 2 2	0	0
15	N	1	Total Mg 1 1	0	0
15	V	1	Total Mg 1 1	0	0
15	X	1	Total Mg 1 1	0	0
15	Y	2	Total Mg 2 2	0	0
15	Z	1	Total Mg 1 1	0	0

- Molecule 16 is CHLORIDE ION (three-letter code: CL) (formula: Cl).

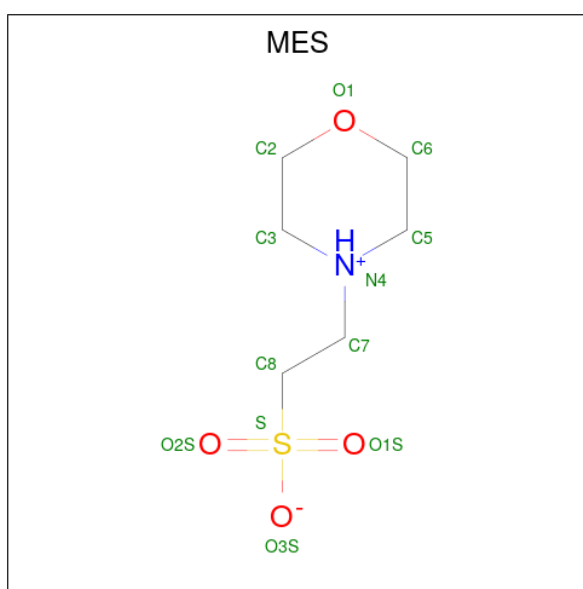
Mol	Chain	Residues	Atoms	ZeroOcc	AltConf
16	G	1	Total Cl 1 1	0	0
16	U	1	Total Cl 1 1	0	0

- Molecule 17 is (2 {S})- {N}-[(2 {S},3 {R})-1-(4-cyclohexylcyclohexyl)-4-methyl-3,4-bis(oxidanyl)pentan-2-yl]-3-(4-methoxyphenyl)-2-[[2 {S})-2-(2-morpholin-4-ium-4-ylethanoylamino)propanoyl]amino]propanamide (three-letter code: GWT) (formula: C₃₇H₆₁N₄O₇).



Mol	Chain	Residues	Atoms				ZeroOcc	AltConf
17	H	1	Total	C	N	O	0	0
			48	37	4	7		
17	K	1	Total	C	N	O	0	0
			48	37	4	7		
17	V	1	Total	C	N	O	0	0
			48	37	4	7		
17	Y	1	Total	C	N	O	0	0
			48	37	4	7		

- Molecule 18 is 2-(N-MORPHOLINO)-ETHANESULFONIC ACID (three-letter code: MES) (formula: C₆H₁₃NO₄S).



Mol	Chain	Residues	Atoms					ZeroOcc	AltConf
18	H	1	Total	C	N	O	S	0	0
			12	6	1	4	1		
18	K	1	Total	C	N	O	S	0	0
			12	6	1	4	1		
18	V	1	Total	C	N	O	S	0	0
			12	6	1	4	1		
18	Y	1	Total	C	N	O	S	0	0
			12	6	1	4	1		

- Molecule 19 is water.

Mol	Chain	Residues	Atoms		ZeroOcc	AltConf
19	A	31	Total	O	0	0
			31	31		

Continued on next page...

Continued from previous page...

Mol	Chain	Residues	Atoms	ZeroOcc	AltConf
19	B	29	Total O 29 29	0	0
19	C	24	Total O 24 24	0	0
19	D	11	Total O 11 11	0	0
19	E	13	Total O 13 13	0	0
19	F	24	Total O 24 24	0	0
19	G	36	Total O 36 36	0	0
19	H	28	Total O 28 28	0	0
19	I	36	Total O 36 36	0	0
19	J	32	Total O 32 32	0	0
19	K	36	Total O 36 36	0	0
19	L	25	Total O 25 25	0	0
19	M	26	Total O 26 26	0	0
19	N	23	Total O 23 23	0	0
19	O	19	Total O 19 19	0	0
19	P	12	Total O 12 12	0	0
19	Q	19	Total O 19 19	0	0
19	R	11	Total O 11 11	0	0
19	S	5	Total O 5 5	0	0
19	T	19	Total O 19 19	0	0
19	U	21	Total O 21 21	0	0
19	V	25	Total O 25 25	0	0

Continued on next page...

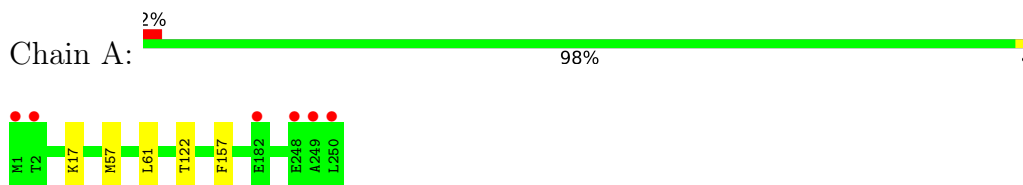
Continued from previous page...

Mol	Chain	Residues	Atoms		ZeroOcc	AltConf
19	W	25	Total 25	O 25	0	0
19	X	31	Total 31	O 31	0	0
19	Y	30	Total 30	O 30	0	0
19	Z	31	Total 31	O 31	0	0
19	a	35	Total 35	O 35	0	0
19	b	29	Total 29	O 29	0	0

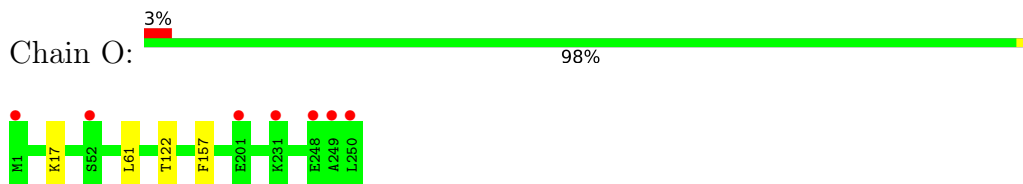
3 Residue-property plots [i](#)

These plots are drawn for all protein, RNA, DNA and oligosaccharide chains in the entry. The first graphic for a chain summarises the proportions of the various outlier classes displayed in the second graphic. The second graphic shows the sequence view annotated by issues in geometry and electron density. Residues are color-coded according to the number of geometric quality criteria for which they contain at least one outlier: green = 0, yellow = 1, orange = 2 and red = 3 or more. A red dot above a residue indicates a poor fit to the electron density ($RSRZ > 2$). Stretches of 2 or more consecutive residues without any outlier are shown as a green connector. Residues present in the sample, but not in the model, are shown in grey.

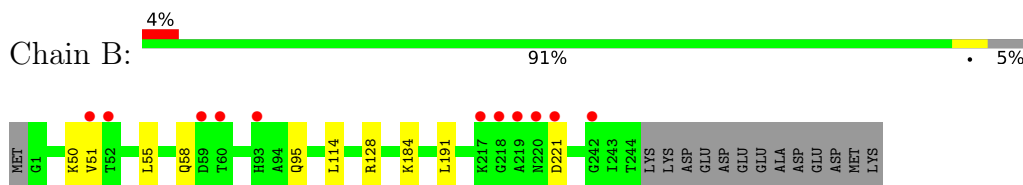
- Molecule 1: Proteasome subunit alpha type-2



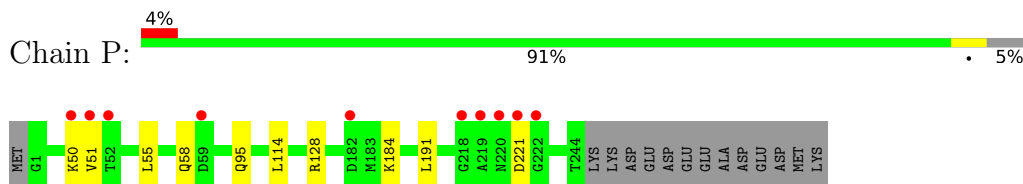
- Molecule 1: Proteasome subunit alpha type-2



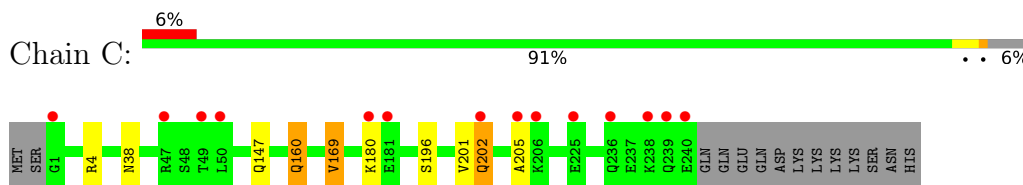
- Molecule 2: Proteasome subunit alpha type-3



- Molecule 2: Proteasome subunit alpha type-3



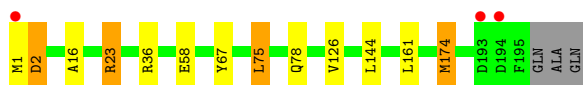
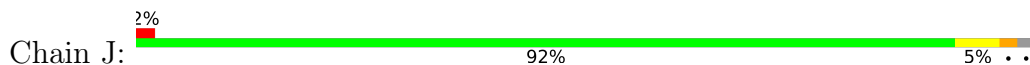
- Molecule 3: Proteasome subunit alpha type-4



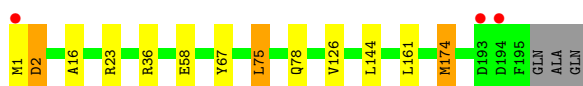
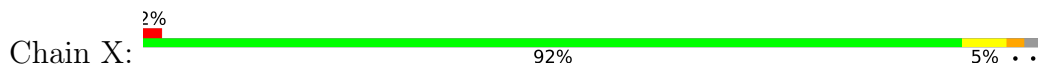
- Molecule 3: Proteasome subunit alpha type-4



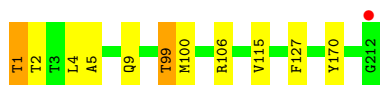
- Molecule 10: Proteasome subunit beta type-4



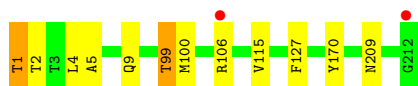
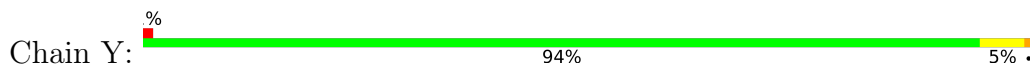
- Molecule 10: Proteasome subunit beta type-4



- Molecule 11: Proteasome subunit beta type-5



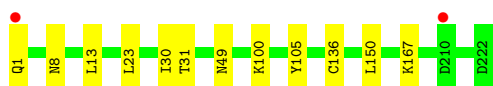
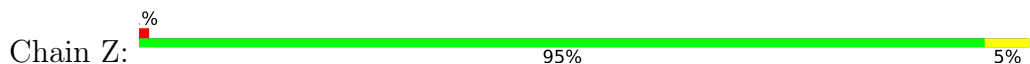
- Molecule 11: Proteasome subunit beta type-5



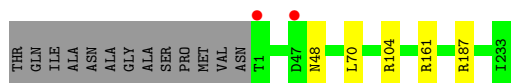
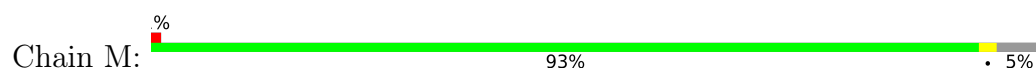
- Molecule 12: Proteasome subunit beta type-6



- Molecule 12: Proteasome subunit beta type-6



- Molecule 13: Proteasome subunit beta type-7



- Molecule 13: Proteasome subunit beta type-7



- Molecule 14: Proteasome subunit beta type-1



- Molecule 14: Proteasome subunit beta type-1



4 Data and refinement statistics

Property	Value	Source
Space group	P 1 21 1	Depositor
Cell constants a, b, c, α , β , γ	136.61Å 299.92Å 145.63Å 90.00° 113.16° 90.00°	Depositor
Resolution (Å)	15.00 – 2.60 15.00 – 2.60	Depositor EDS
% Data completeness (in resolution range)	97.3 (15.00-2.60) 97.8 (15.00-2.60)	Depositor EDS
R_{merge}	0.07	Depositor
R_{sym}	(Not available)	Depositor
$\langle I/\sigma(I) \rangle$ ¹	2.46 (at 2.61Å)	Xtrriage
Refinement program	REFMAC 5.8.0158	Depositor
R, R_{free}	0.189 , 0.221 0.195 , 0.226	Depositor DCC
R_{free} test set	15998 reflections (5.00%)	wwPDB-VP
Wilson B-factor (Å ²)	54.5	Xtrriage
Anisotropy	0.273	Xtrriage
Bulk solvent k_{sol} (e/Å ³), B_{sol} (Å ²)	0.31 , 34.3	EDS
L-test for twinning ²	$\langle L \rangle = 0.49$, $\langle L^2 \rangle = 0.32$	Xtrriage
Estimated twinning fraction	No twinning to report.	Xtrriage
F_o, F_c correlation	0.95	EDS
Total number of atoms	50234	wwPDB-VP
Average B, all atoms (Å ²)	63.0	wwPDB-VP

Xtrriage's analysis on translational NCS is as follows: *The largest off-origin peak in the Patterson function is 2.13% of the height of the origin peak. No significant pseudotranslation is detected.*

¹Intensities estimated from amplitudes.

²Theoretical values of $\langle |L| \rangle$, $\langle L^2 \rangle$ for acentric reflections are 0.5, 0.333 respectively for untwinned datasets, and 0.375, 0.2 for perfectly twinned datasets.

5 Model quality

5.1 Standard geometry

Bond lengths and bond angles in the following residue types are not validated in this section: MES, CL, MG, GWT

The Z score for a bond length (or angle) is the number of standard deviations the observed value is removed from the expected value. A bond length (or angle) with $|Z| > 5$ is considered an outlier worth inspection. RMSZ is the root-mean-square of all Z scores of the bond lengths (or angles).

Mol	Chain	Bond lengths		Bond angles	
		RMSZ	# Z >5	RMSZ	# Z >5
1	A	0.35	0/1952	0.55	0/2642
1	O	0.35	0/1952	0.55	0/2642
2	B	0.35	0/1934	0.57	0/2618
2	P	0.35	0/1934	0.57	0/2618
3	C	0.35	0/1910	0.61	0/2586
3	Q	0.35	0/1910	0.60	0/2586
4	D	0.34	0/1837	0.55	0/2475
4	R	0.34	0/1837	0.55	0/2475
5	E	0.35	0/1800	0.55	0/2433
5	S	0.34	0/1800	0.55	0/2433
6	F	0.35	0/1932	0.53	0/2609
6	T	0.34	0/1932	0.53	0/2609
7	G	0.35	0/1945	0.54	0/2634
7	U	0.35	0/1945	0.54	0/2634
8	H	0.33	0/1715	0.57	1/2326 (0.0%)
8	V	0.32	0/1715	0.55	0/2326
9	I	0.34	0/1611	0.59	0/2174
9	W	0.33	0/1611	0.58	0/2174
10	J	0.34	0/1589	0.57	0/2142
10	X	0.33	0/1589	0.58	0/2142
11	K	0.34	0/1681	0.60	1/2274 (0.0%)
11	Y	0.35	0/1681	0.59	1/2274 (0.0%)
12	L	0.34	0/1795	0.57	0/2420
12	Z	0.35	0/1795	0.57	0/2420
13	M	0.34	0/1855	0.61	0/2514
13	a	0.34	0/1855	0.61	0/2514
14	N	0.32	0/1541	0.55	0/2087
14	b	0.32	0/1541	0.55	0/2087
All	All	0.34	0/50194	0.57	3/67868 (0.0%)

There are no bond length outliers.

All (3) bond angle outliers are listed below:

Mol	Chain	Res	Type	Atoms	Z	Observed(°)	Ideal(°)
8	H	1	THR	CA-CB-OG1	6.43	122.51	109.00
11	K	1	THR	CA-CB-OG1	6.10	121.82	109.00
11	Y	1	THR	CA-CB-OG1	5.62	120.80	109.00

There are no chirality outliers.

There are no planarity outliers.

5.2 Too-close contacts [i](#)

In the following table, the Non-H and H(model) columns list the number of non-hydrogen atoms and hydrogen atoms in the chain respectively. The H(added) column lists the number of hydrogen atoms added and optimized by MolProbity. The Clashes column lists the number of clashes within the asymmetric unit, whereas Symm-Clashes lists symmetry-related clashes.

Mol	Chain	Non-H	H(model)	H(added)	Clashes	Symm-Clashes
1	A	1915	0	1929	2	0
1	O	1915	0	1929	1	0
2	B	1904	0	1904	2	0
2	P	1904	0	1904	2	0
3	C	1881	0	1895	3	0
3	Q	1881	0	1895	3	0
4	D	1813	0	1797	2	0
4	R	1813	0	1797	2	0
5	E	1773	0	1775	1	0
5	S	1773	0	1775	1	0
6	F	1892	0	1883	2	0
6	T	1892	0	1883	3	0
7	G	1907	0	1901	1	0
7	U	1907	0	1901	2	0
8	H	1684	0	1686	3	0
8	V	1684	0	1686	0	0
9	I	1581	0	1574	8	0
9	W	1581	0	1574	5	0
10	J	1561	0	1569	7	0
10	X	1561	0	1569	6	0
11	K	1644	0	1593	6	0
11	Y	1644	0	1593	7	0
12	L	1757	0	1711	2	0
12	Z	1757	0	1711	4	0
13	M	1824	0	1832	0	0

Continued on next page...

Continued from previous page...

Mol	Chain	Non-H	H(model)	H(added)	Clashes	Symm-Clashes
13	a	1824	0	1832	0	0
14	N	1512	0	1481	3	0
14	b	1512	0	1481	0	0
15	G	1	0	0	0	0
15	I	1	0	0	0	0
15	K	2	0	0	0	0
15	N	1	0	0	0	0
15	V	1	0	0	0	0
15	X	1	0	0	0	0
15	Y	2	0	0	0	0
15	Z	1	0	0	0	0
16	G	1	0	0	0	0
16	U	1	0	0	0	0
17	H	48	0	0	1	0
17	K	48	0	0	2	0
17	V	48	0	0	1	0
17	Y	48	0	0	1	0
18	H	12	0	13	0	0
18	K	12	0	13	1	0
18	V	12	0	13	0	0
18	Y	12	0	13	0	0
19	A	31	0	0	0	0
19	B	29	0	0	0	0
19	C	24	0	0	0	0
19	D	11	0	0	0	0
19	E	13	0	0	0	0
19	F	24	0	0	0	0
19	G	36	0	0	1	0
19	H	28	0	0	0	0
19	I	36	0	0	0	0
19	J	32	0	0	0	0
19	K	36	0	0	0	0
19	L	25	0	0	0	0
19	M	26	0	0	0	0
19	N	23	0	0	0	0
19	O	19	0	0	0	0
19	P	12	0	0	0	0
19	Q	19	0	0	0	0
19	R	11	0	0	0	0
19	S	5	0	0	0	0
19	T	19	0	0	0	0
19	U	21	0	0	0	0

Continued on next page...

Continued from previous page...

Mol	Chain	Non-H	H(model)	H(added)	Clashes	Symm-Clashes
19	V	25	0	0	0	0
19	W	25	0	0	0	0
19	X	31	0	0	0	0
19	Y	30	0	0	0	0
19	Z	31	0	0	0	0
19	a	35	0	0	0	0
19	b	29	0	0	0	0
All	All	50234	0	49112	72	0

The all-atom clashscore is defined as the number of clashes found per 1000 atoms (including hydrogen atoms). The all-atom clashscore for this structure is 1.

The worst 5 of 72 close contacts within the same asymmetric unit are listed below, sorted by their clash magnitude.

Atom-1	Atom-2	Interatomic distance (Å)	Clash overlap (Å)
11:Y:5:ALA:HB3	11:Y:100:MET:HE2	1.80	0.64
8:H:1:THR:HG22	8:H:2:THR:N	2.13	0.62
8:H:1:THR:CG2	8:H:2:THR:N	2.63	0.61
14:N:152:VAL:HA	14:N:175:MET:HE1	1.84	0.59
12:L:13:LEU:HD13	12:L:150:LEU:HD21	1.86	0.58

There are no symmetry-related clashes.

5.3 Torsion angles [i](#)

5.3.1 Protein backbone [i](#)

In the following table, the Percentiles column shows the percent Ramachandran outliers of the chain as a percentile score with respect to all X-ray entries followed by that with respect to entries of similar resolution.

The Analysed column shows the number of residues for which the backbone conformation was analysed, and the total number of residues.

Mol	Chain	Analysed	Favoured	Allowed	Outliers	Percentiles	
1	A	248/250 (99%)	243 (98%)	5 (2%)	0	100	100
1	O	248/250 (99%)	241 (97%)	7 (3%)	0	100	100
2	B	242/258 (94%)	233 (96%)	7 (3%)	2 (1%)	19	39
2	P	242/258 (94%)	233 (96%)	7 (3%)	2 (1%)	19	39

Continued on next page...

Continued from previous page...

Mol	Chain	Analysed	Favoured	Allowed	Outliers	Percentiles	
3	C	238/254 (94%)	231 (97%)	5 (2%)	2 (1%)	19	39
3	Q	238/254 (94%)	231 (97%)	5 (2%)	2 (1%)	19	39
4	D	231/260 (89%)	225 (97%)	6 (3%)	0	100	100
4	R	231/260 (89%)	225 (97%)	6 (3%)	0	100	100
5	E	229/234 (98%)	224 (98%)	5 (2%)	0	100	100
5	S	229/234 (98%)	223 (97%)	6 (3%)	0	100	100
6	F	241/288 (84%)	236 (98%)	5 (2%)	0	100	100
6	T	241/288 (84%)	236 (98%)	5 (2%)	0	100	100
7	G	239/252 (95%)	235 (98%)	4 (2%)	0	100	100
7	U	239/252 (95%)	235 (98%)	4 (2%)	0	100	100
8	H	220/232 (95%)	214 (97%)	5 (2%)	1 (0%)	29	52
8	V	220/232 (95%)	214 (97%)	6 (3%)	0	100	100
9	I	202/205 (98%)	195 (96%)	7 (4%)	0	100	100
9	W	202/205 (98%)	195 (96%)	7 (4%)	0	100	100
10	J	193/198 (98%)	189 (98%)	3 (2%)	1 (0%)	29	52
10	X	193/198 (98%)	189 (98%)	3 (2%)	1 (0%)	29	52
11	K	210/212 (99%)	203 (97%)	7 (3%)	0	100	100
11	Y	210/212 (99%)	204 (97%)	6 (3%)	0	100	100
12	L	220/222 (99%)	217 (99%)	3 (1%)	0	100	100
12	Z	220/222 (99%)	217 (99%)	3 (1%)	0	100	100
13	M	231/246 (94%)	223 (96%)	8 (4%)	0	100	100
13	a	231/246 (94%)	223 (96%)	7 (3%)	1 (0%)	34	57
14	N	194/196 (99%)	187 (96%)	7 (4%)	0	100	100
14	b	194/196 (99%)	187 (96%)	7 (4%)	0	100	100
All	All	6276/6614 (95%)	6108 (97%)	156 (2%)	12 (0%)	47	71

5 of 12 Ramachandran outliers are listed below:

Mol	Chain	Res	Type
2	B	51	VAL
3	C	202	GLN
2	P	51	VAL
3	Q	202	GLN
10	J	2	ASP

5.3.2 Protein sidechains [i](#)

In the following table, the Percentiles column shows the percent sidechain outliers of the chain as a percentile score with respect to all X-ray entries followed by that with respect to entries of similar resolution.

The Analysed column shows the number of residues for which the sidechain conformation was analysed, and the total number of residues.

Mol	Chain	Analysed	Rotameric	Outliers	Percentiles	
1	A	209/209 (100%)	206 (99%)	3 (1%)	67	85
1	O	209/209 (100%)	206 (99%)	3 (1%)	67	85
2	B	203/216 (94%)	197 (97%)	6 (3%)	41	67
2	P	203/216 (94%)	197 (97%)	6 (3%)	41	67
3	C	212/226 (94%)	206 (97%)	6 (3%)	43	69
3	Q	212/226 (94%)	206 (97%)	6 (3%)	43	69
4	D	194/215 (90%)	188 (97%)	6 (3%)	40	66
4	R	194/215 (90%)	188 (97%)	6 (3%)	40	66
5	E	190/193 (98%)	183 (96%)	7 (4%)	34	60
5	S	190/193 (98%)	183 (96%)	7 (4%)	34	60
6	F	201/239 (84%)	192 (96%)	9 (4%)	27	52
6	T	201/239 (84%)	192 (96%)	9 (4%)	27	52
7	G	206/210 (98%)	199 (97%)	7 (3%)	37	63
7	U	206/210 (98%)	199 (97%)	7 (3%)	37	63
8	H	181/190 (95%)	177 (98%)	4 (2%)	52	76
8	V	181/190 (95%)	177 (98%)	4 (2%)	52	76
9	I	172/173 (99%)	169 (98%)	3 (2%)	60	81
9	W	172/173 (99%)	169 (98%)	3 (2%)	60	81
10	J	173/175 (99%)	168 (97%)	5 (3%)	42	68
10	X	173/175 (99%)	168 (97%)	5 (3%)	42	68
11	K	169/169 (100%)	165 (98%)	4 (2%)	49	74
11	Y	169/169 (100%)	165 (98%)	4 (2%)	49	74
12	L	185/185 (100%)	179 (97%)	6 (3%)	39	65
12	Z	185/185 (100%)	179 (97%)	6 (3%)	39	65
13	M	199/208 (96%)	194 (98%)	5 (2%)	47	73
13	a	199/208 (96%)	194 (98%)	5 (2%)	47	73

Continued on next page...

Continued from previous page...

Mol	Chain	Analysed	Rotameric	Outliers	Percentiles	
14	N	162/162 (100%)	161 (99%)	1 (1%)	86	95
14	b	162/162 (100%)	161 (99%)	1 (1%)	86	95
All	All	5312/5540 (96%)	5168 (97%)	144 (3%)	44	71

5 of 144 residues with a non-rotameric sidechain are listed below:

Mol	Chain	Res	Type
7	U	235	ARG
14	b	39	ASP
8	V	196	ARG
11	Y	99	THR
9	I	37	ASN

Sometimes sidechains can be flipped to improve hydrogen bonding and reduce clashes. 5 of 99 such sidechains are listed below:

Mol	Chain	Res	Type
3	Q	77	ASN
5	S	184	ASN
3	Q	120	GLN
5	S	68	HIS
6	T	191	GLN

5.3.3 RNA [i](#)

There are no RNA molecules in this entry.

5.4 Non-standard residues in protein, DNA, RNA chains [i](#)

There are no non-standard protein/DNA/RNA residues in this entry.

5.5 Carbohydrates [i](#)

There are no monosaccharides in this entry.

5.6 Ligand geometry [i](#)

Of 20 ligands modelled in this entry, 12 are monoatomic - leaving 8 for Mogul analysis.

In the following table, the Counts columns list the number of bonds (or angles) for which Mogul statistics could be retrieved, the number of bonds (or angles) that are observed in the model and the number of bonds (or angles) that are defined in the Chemical Component Dictionary. The Link column lists molecule types, if any, to which the group is linked. The Z score for a bond length (or angle) is the number of standard deviations the observed value is removed from the expected value. A bond length (or angle) with $|Z| > 2$ is considered an outlier worth inspection. RMSZ is the root-mean-square of all Z scores of the bond lengths (or angles).

Mol	Type	Chain	Res	Link	Bond lengths			Bond angles		
					Counts	RMSZ	# Z > 2	Counts	RMSZ	# Z > 2
17	GWT	K	301	11	51,51,51	2.06	7 (13%)	67,70,70	2.70	14 (20%)
18	MES	V	303	-	12,12,12	2.15	1 (8%)	14,16,16	1.51	2 (14%)
17	GWT	V	301	8	51,51,51	1.11	4 (7%)	67,70,70	1.77	13 (19%)
18	MES	K	304	-	12,12,12	2.48	1 (8%)	14,16,16	1.49	1 (7%)
17	GWT	Y	301	11	51,51,51	2.23	7 (13%)	67,70,70	2.80	16 (23%)
18	MES	Y	304	-	12,12,12	2.43	1 (8%)	14,16,16	1.52	2 (14%)
18	MES	H	302	-	12,12,12	2.13	1 (8%)	14,16,16	1.51	2 (14%)
17	GWT	H	301	8	51,51,51	1.78	4 (7%)	67,70,70	2.64	11 (16%)

In the following table, the Chirals column lists the number of chiral outliers, the number of chiral centers analysed, the number of these observed in the model and the number defined in the Chemical Component Dictionary. Similar counts are reported in the Torsion and Rings columns. '-' means no outliers of that kind were identified.

Mol	Type	Chain	Res	Link	Chirals	Torsions	Rings
17	GWT	K	301	11	-	4/48/74/74	0/4/4/4
18	MES	V	303	-	-	0/6/14/14	0/1/1/1
17	GWT	V	301	8	-	9/48/74/74	0/4/4/4
18	MES	K	304	-	-	0/6/14/14	0/1/1/1
17	GWT	Y	301	11	-	8/48/74/74	0/4/4/4
18	MES	Y	304	-	-	0/6/14/14	0/1/1/1
18	MES	H	302	-	-	3/6/14/14	0/1/1/1
17	GWT	H	301	8	-	7/48/74/74	0/4/4/4

The worst 5 of 26 bond length outliers are listed below:

Mol	Chain	Res	Type	Atoms	Z	Observed(Å)	Ideal(Å)
17	K	301	GWT	C10-C9	8.51	1.71	1.54
18	K	304	MES	C8-S	-8.39	1.65	1.77
18	Y	304	MES	C8-S	-8.21	1.65	1.77
17	Y	301	GWT	C10-C9	8.17	1.70	1.54
17	H	301	GWT	C10-C9	7.93	1.70	1.54

The worst 5 of 61 bond angle outliers are listed below:

Mol	Chain	Res	Type	Atoms	Z	Observed(°)	Ideal(°)
17	Y	301	GWT	O13-C10-C11	16.10	142.47	107.90
17	K	301	GWT	O13-C10-C11	15.43	141.04	107.90
17	H	301	GWT	O13-C10-C11	15.36	140.88	107.90
17	K	301	GWT	O13-C10-C9	-9.32	85.72	107.64
17	Y	301	GWT	O13-C10-C9	-8.88	86.76	107.64

There are no chirality outliers.

5 of 31 torsion outliers are listed below:

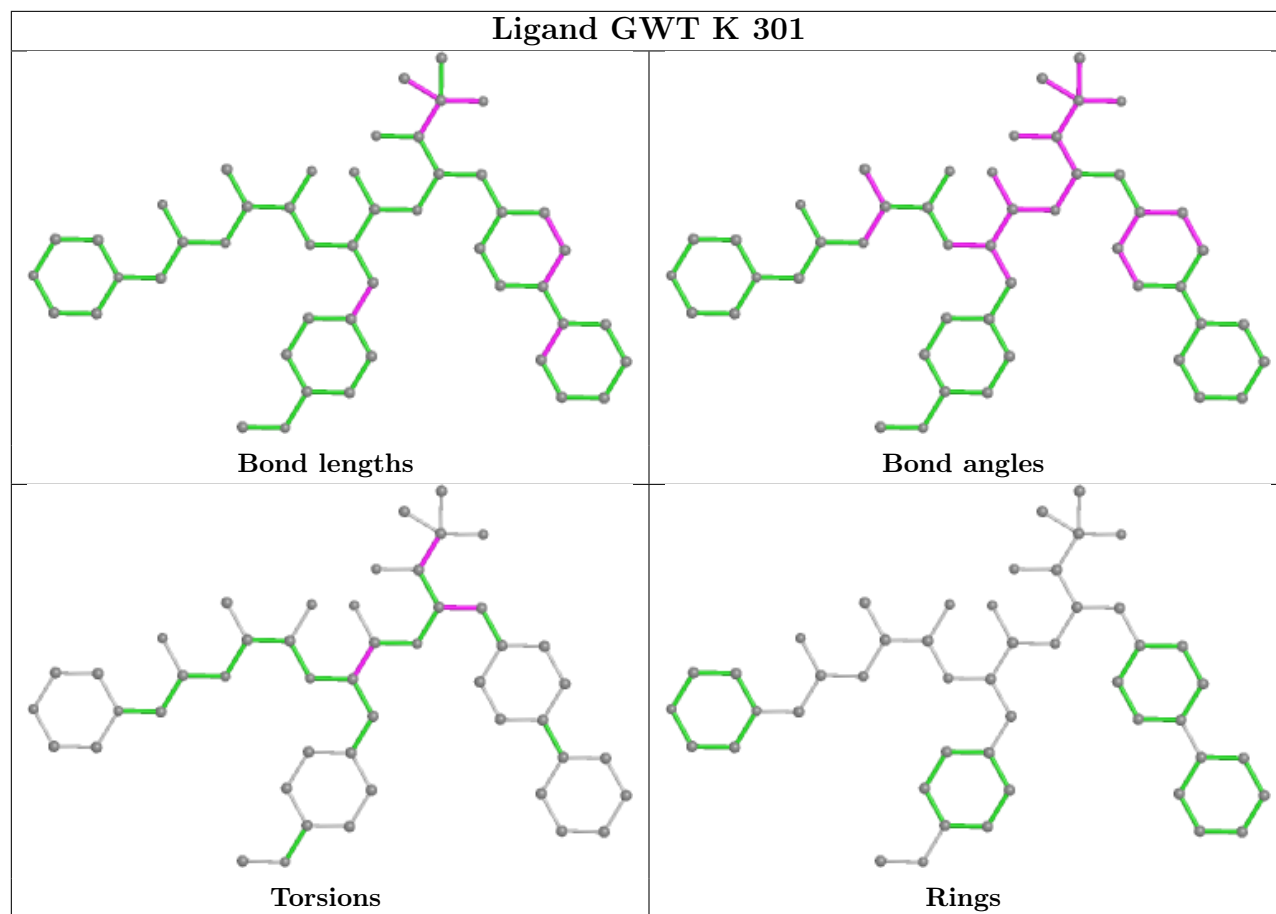
Mol	Chain	Res	Type	Atoms
17	H	301	GWT	C11-C10-C9-O21
17	K	301	GWT	C6-C7-C8-C9
17	K	301	GWT	C11-C10-C9-O21
17	V	301	GWT	C11-C10-C9-C8
17	V	301	GWT	C11-C10-C9-O21

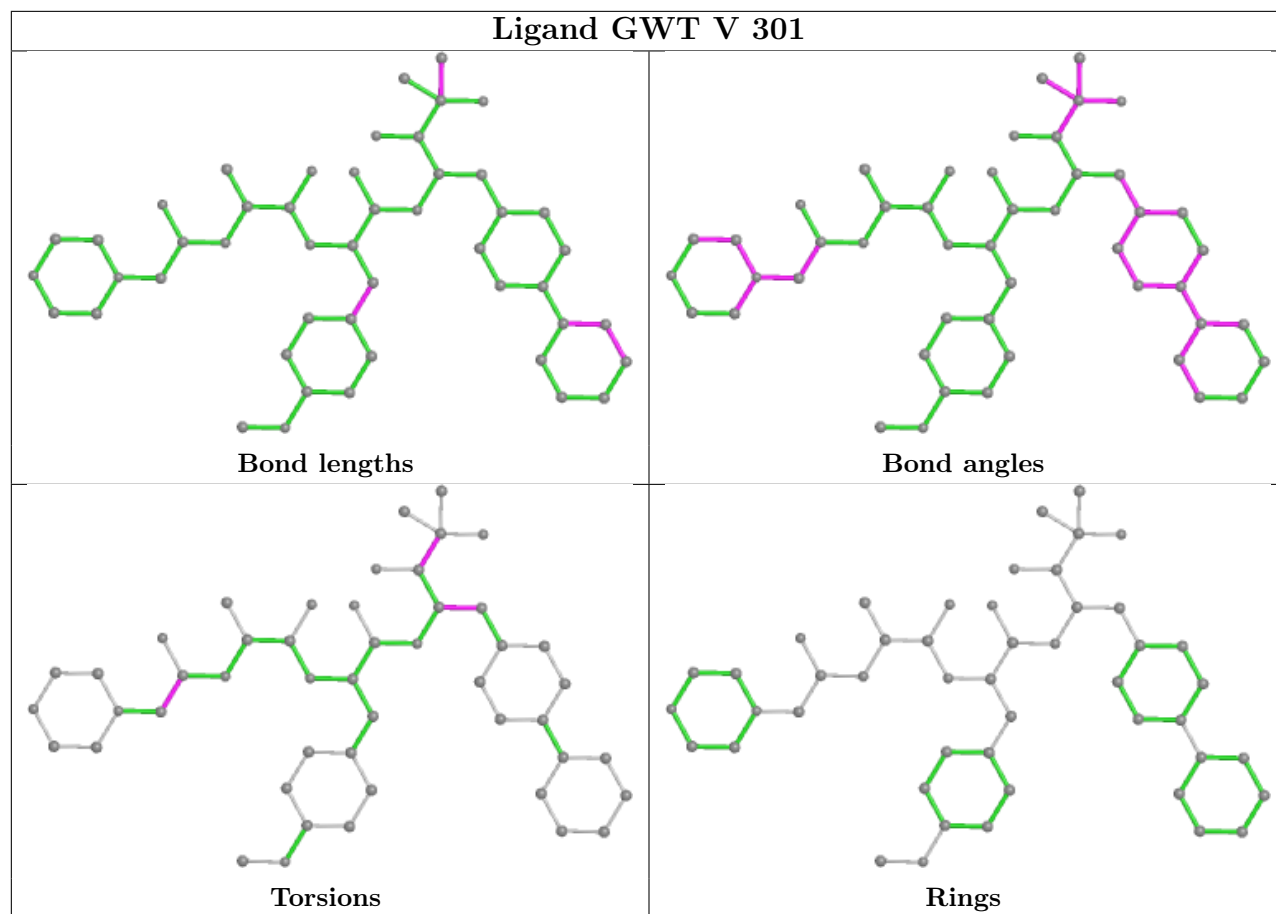
There are no ring outliers.

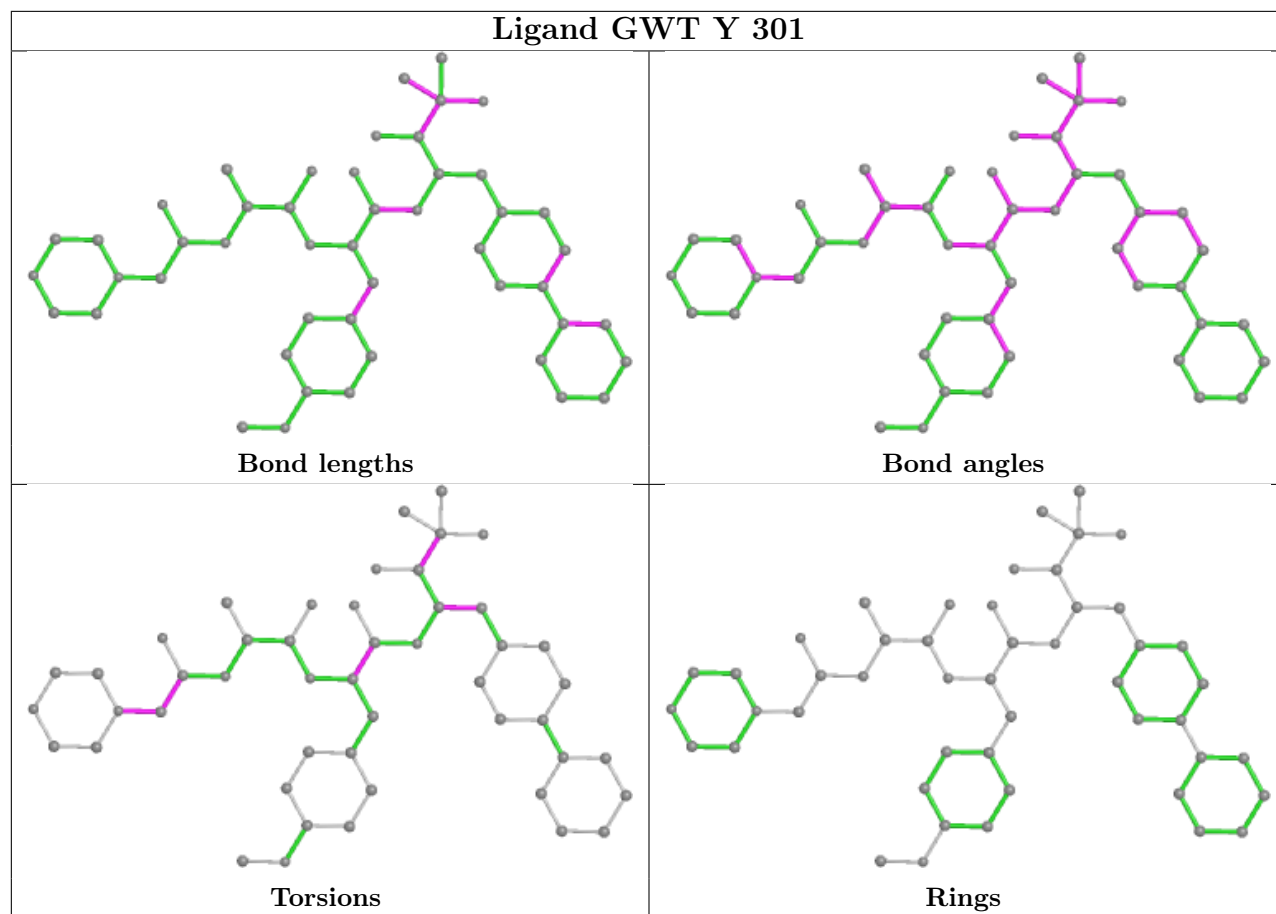
5 monomers are involved in 6 short contacts:

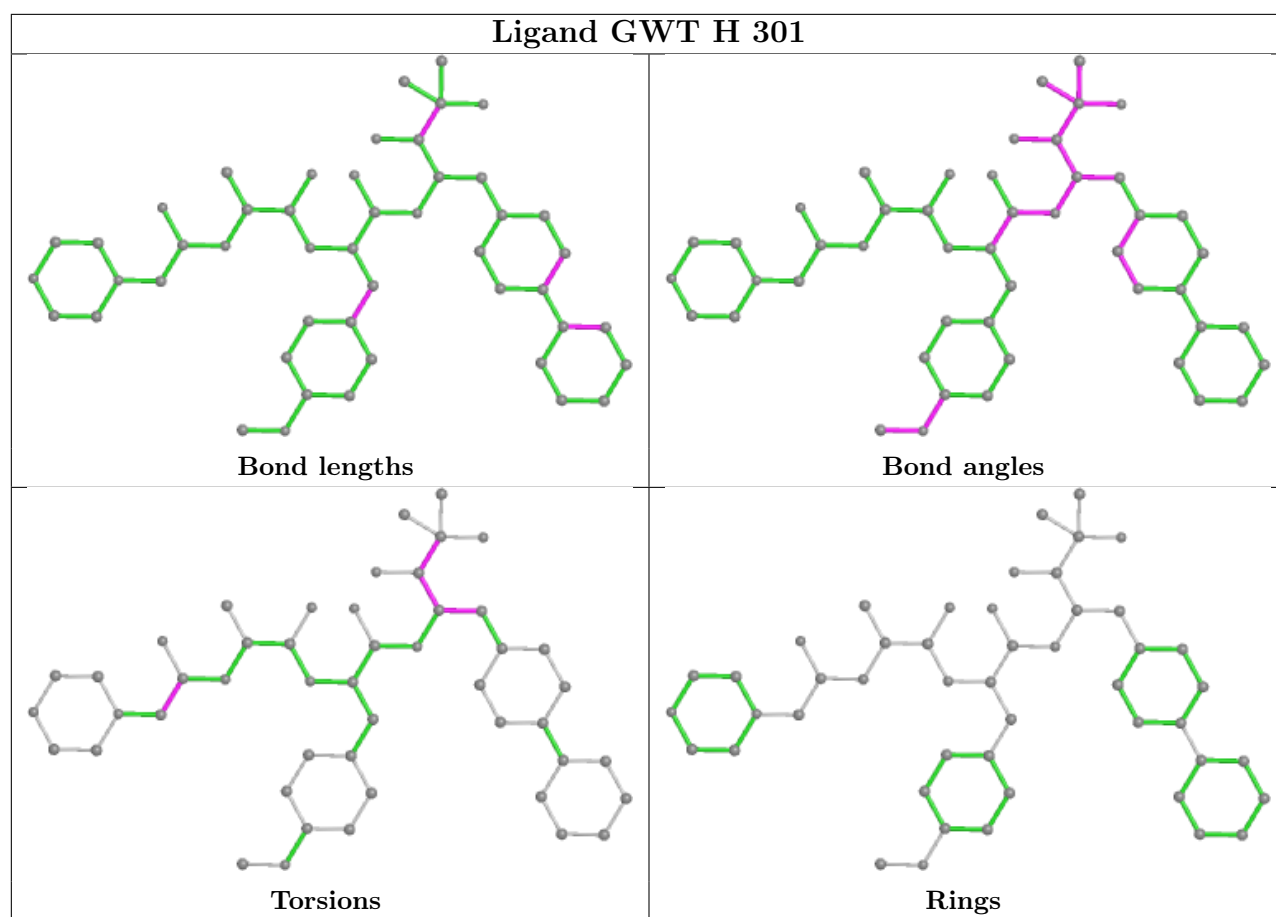
Mol	Chain	Res	Type	Clashes	Symm-Clashes
17	K	301	GWT	2	0
17	V	301	GWT	1	0
18	K	304	MES	1	0
17	Y	301	GWT	1	0
17	H	301	GWT	1	0

The following is a two-dimensional graphical depiction of Mogul quality analysis of bond lengths, bond angles, torsion angles, and ring geometry for all instances of the Ligand of Interest. In addition, ligands with molecular weight > 250 and outliers as shown on the validation Tables will also be included. For torsion angles, if less than 5% of the Mogul distribution of torsion angles is within 10 degrees of the torsion angle in question, then that torsion angle is considered an outlier. Any bond that is central to one or more torsion angles identified as an outlier by Mogul will be highlighted in the graph. For rings, the root-mean-square deviation (RMSD) between the ring in question and similar rings identified by Mogul is calculated over all ring torsion angles. If the average RMSD is greater than 60 degrees and the minimal RMSD between the ring in question and any Mogul-identified rings is also greater than 60 degrees, then that ring is considered an outlier. The outliers are highlighted in purple. The color gray indicates Mogul did not find sufficient equivalents in the CSD to analyse the geometry.









5.7 Other polymers [i](#)

There are no such residues in this entry.

5.8 Polymer linkage issues [i](#)

There are no chain breaks in this entry.

6 Fit of model and data [i](#)

6.1 Protein, DNA and RNA chains [i](#)

In the following table, the column labelled ‘#RSRZ > 2’ contains the number (and percentage) of RSRZ outliers, followed by percent RSRZ outliers for the chain as percentile scores relative to all X-ray entries and entries of similar resolution. The OWAB column contains the minimum, median, 95th percentile and maximum values of the occupancy-weighted average B-factor per residue. The column labelled ‘Q < 0.9’ lists the number of (and percentage) of residues with an average occupancy less than 0.9.

Mol	Chain	Analysed	<RSRZ>	#RSRZ>2	OWAB(Å ²)	Q<0.9
1	A	250/250 (100%)	-0.36	6 (2%) 59 53	39, 52, 90, 147	0
1	O	250/250 (100%)	-0.30	7 (2%) 53 46	43, 61, 102, 153	0
2	B	244/258 (94%)	-0.22	11 (4%) 33 26	40, 60, 105, 154	0
2	P	244/258 (94%)	-0.21	10 (4%) 37 30	42, 63, 110, 152	0
3	C	240/254 (94%)	-0.13	14 (5%) 23 17	39, 64, 127, 156	0
3	Q	240/254 (94%)	0.11	20 (8%) 11 8	46, 76, 157, 188	0
4	D	235/260 (90%)	-0.37	2 (0%) 84 82	44, 65, 99, 141	0
4	R	235/260 (90%)	-0.26	5 (2%) 63 58	45, 66, 103, 154	0
5	E	231/234 (98%)	-0.17	7 (3%) 50 43	46, 69, 106, 146	0
5	S	231/234 (98%)	-0.04	10 (4%) 35 28	50, 76, 123, 158	0
6	F	243/288 (84%)	-0.37	7 (2%) 51 45	34, 62, 112, 144	0
6	T	243/288 (84%)	-0.23	8 (3%) 46 39	41, 70, 130, 164	0
7	G	241/252 (95%)	-0.37	8 (3%) 46 39	37, 56, 98, 143	0
7	U	241/252 (95%)	-0.39	6 (2%) 57 51	41, 57, 92, 127	0
8	H	222/232 (95%)	-0.44	2 (0%) 84 82	41, 54, 82, 106	0
8	V	222/232 (95%)	-0.40	3 (1%) 75 71	42, 57, 85, 112	0
9	I	204/205 (99%)	-0.69	2 (0%) 82 80	34, 49, 77, 102	0
9	W	204/205 (99%)	-0.62	2 (0%) 82 80	35, 53, 80, 110	0
10	J	195/198 (98%)	-0.52	3 (1%) 73 70	35, 51, 79, 118	0
10	X	195/198 (98%)	-0.55	3 (1%) 73 70	38, 53, 80, 133	0
11	K	212/212 (100%)	-0.57	1 (0%) 91 89	36, 51, 77, 99	0
11	Y	212/212 (100%)	-0.58	2 (0%) 84 82	34, 51, 78, 107	0
12	L	222/222 (100%)	-0.60	0 100 100	36, 56, 84, 101	0
12	Z	222/222 (100%)	-0.56	2 (0%) 84 82	35, 54, 82, 101	0

Continued on next page...

Continued from previous page...

Mol	Chain	Analysed	<RSRZ>	#RSRZ>2	OWAB(Å ²)	Q<0.9
13	M	233/246 (94%)	-0.53	2 (0%) 84 82	32, 57, 82, 98	0
13	a	233/246 (94%)	-0.55	1 (0%) 92 91	31, 54, 81, 102	0
14	N	196/196 (100%)	-0.59	1 (0%) 91 89	37, 51, 81, 105	0
14	b	196/196 (100%)	-0.57	2 (1%) 82 80	37, 51, 82, 106	0
All	All	6336/6614 (95%)	-0.38	147 (2%) 60 54	31, 58, 105, 188	0

The worst 5 of 147 RSRZ outliers are listed below:

Mol	Chain	Res	Type	RSRZ
3	Q	49	THR	8.5
1	O	1	MET	8.0
3	Q	206	LYS	7.7
1	A	1	MET	7.5
3	C	206	LYS	7.3

6.2 Non-standard residues in protein, DNA, RNA chains [i](#)

There are no non-standard protein/DNA/RNA residues in this entry.

6.3 Carbohydrates [i](#)

There are no monosaccharides in this entry.

6.4 Ligands [i](#)

In the following table, the Atoms column lists the number of modelled atoms in the group and the number defined in the chemical component dictionary. The B-factors column lists the minimum, median, 95th percentile and maximum values of B factors of atoms in the group. The column labelled 'Q< 0.9' lists the number of atoms with occupancy less than 0.9.

Mol	Type	Chain	Res	Atoms	RSCC	RSR	B-factors(Å ²)	Q<0.9
17	GWT	H	301	48/48	0.75	0.41	38,45,48,49	48
17	GWT	V	301	48/48	0.79	0.41	37,44,47,48	48
18	MES	V	303	12/12	0.83	0.38	75,77,92,98	12
18	MES	H	302	12/12	0.90	0.30	74,75,81,82	12
17	GWT	K	301	48/48	0.92	0.15	41,45,51,55	0
15	MG	Z	301	1/1	0.93	0.21	65,65,65,65	0
17	GWT	Y	301	48/48	0.93	0.14	42,46,50,55	0

Continued on next page...

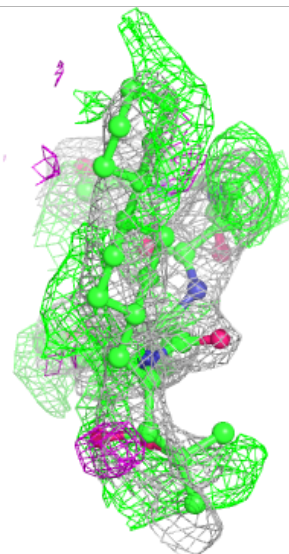
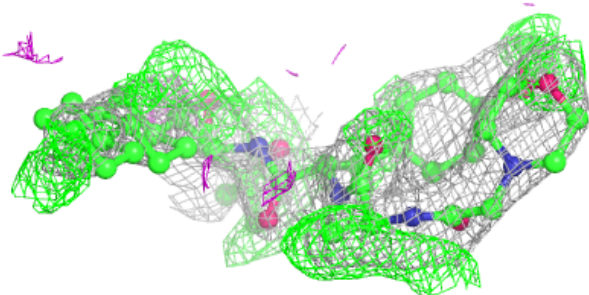
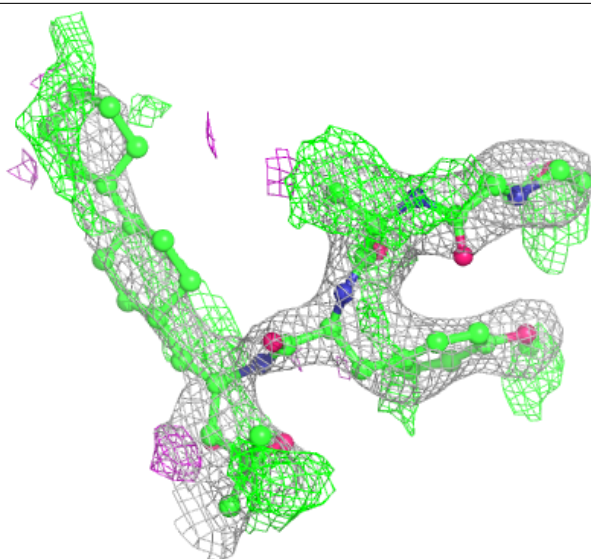
Continued from previous page...

Mol	Type	Chain	Res	Atoms	RSCC	RSR	B-factors(\AA^2)	Q<0.9
15	MG	G	301	1/1	0.93	0.13	57,57,57,57	0
15	MG	V	302	1/1	0.93	0.26	84,84,84,84	0
15	MG	I	301	1/1	0.94	0.14	60,60,60,60	0
15	MG	K	303	1/1	0.95	0.12	47,47,47,47	0
15	MG	Y	302	1/1	0.96	0.14	64,64,64,64	0
15	MG	N	201	1/1	0.97	0.10	53,53,53,53	0
18	MES	K	304	12/12	0.97	0.16	43,45,53,54	12
15	MG	K	302	1/1	0.97	0.10	70,70,70,70	0
18	MES	Y	304	12/12	0.97	0.14	43,46,50,51	12
15	MG	Y	303	1/1	0.98	0.22	45,45,45,45	0
16	CL	U	301	1/1	0.98	0.09	48,48,48,48	0
16	CL	G	302	1/1	0.99	0.08	48,48,48,48	0
15	MG	X	201	1/1	0.99	0.32	45,45,45,45	0

The following is a graphical depiction of the model fit to experimental electron density of all instances of the Ligand of Interest. In addition, ligands with molecular weight > 250 and outliers as shown on the geometry validation Tables will also be included. Each fit is shown from different orientation to approximate a three-dimensional view.

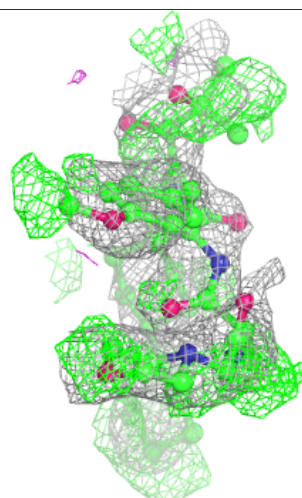
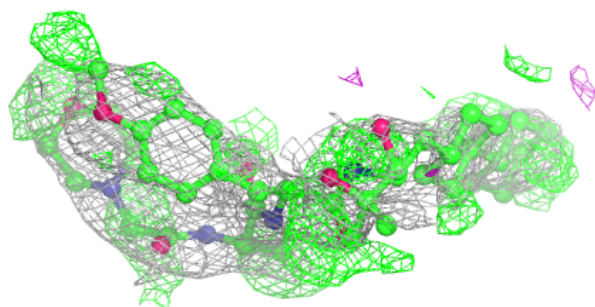
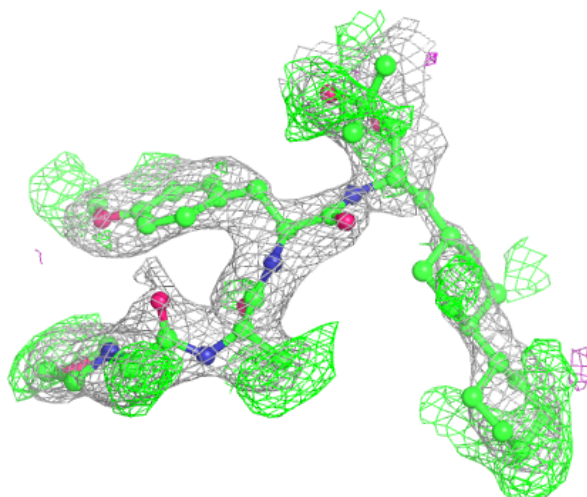
Electron density around GWT H 301:

$2mF_o-DF_c$ (at 0.7 rmsd) in gray
 mF_o-DF_c (at 3 rmsd) in purple (negative)
and green (positive)



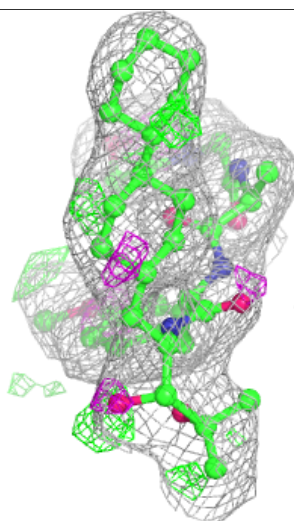
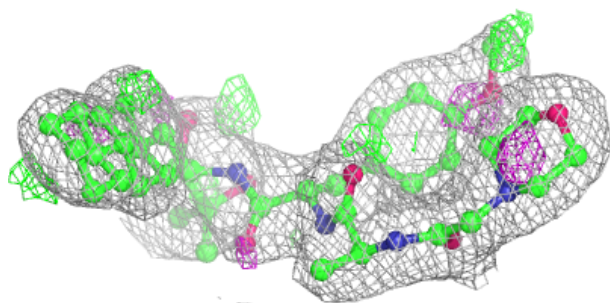
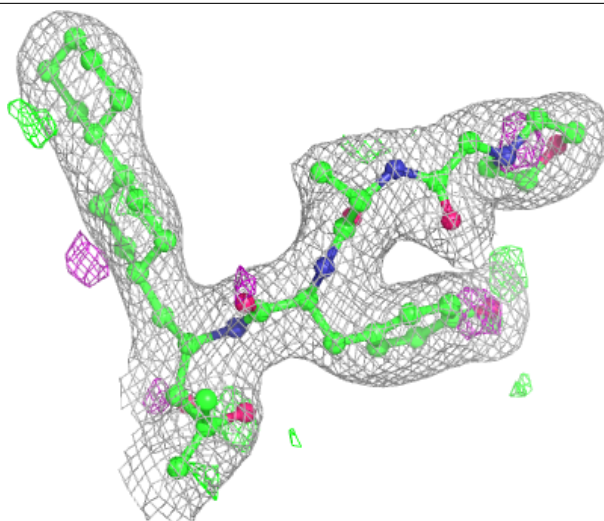
Electron density around GWT V 301:

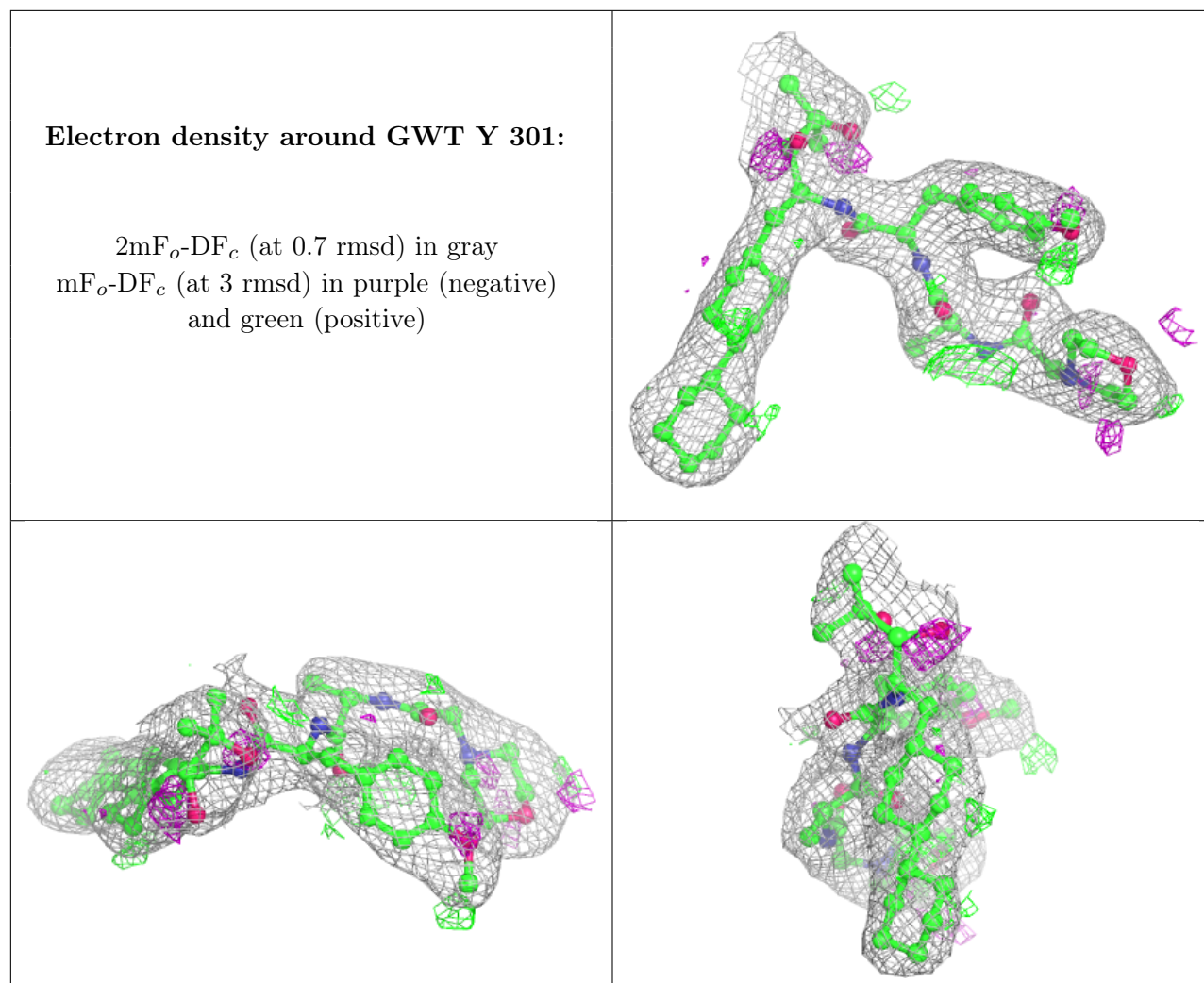
$2mF_o-DF_c$ (at 0.7 rmsd) in gray
 mF_o-DF_c (at 3 rmsd) in purple (negative)
and green (positive)



Electron density around GWT K 301:

$2mF_o-DF_c$ (at 0.7 rmsd) in gray
 mF_o-DF_c (at 3 rmsd) in purple (negative)
and green (positive)





6.5 Other polymers [i](#)

There are no such residues in this entry.