



Full wwPDB X-ray Structure Validation Report ⓘ

Feb 18, 2024 – 09:59 PM EST

PDB ID : 4HWO
Title : Crystal structure of E. coli Threonyl-tRNA synthetase bound to a novel inhibitor
Authors : Hilgers, M.T.
Deposited on : 2012-11-08
Resolution : 1.91 Å(reported)

This is a Full wwPDB X-ray Structure Validation Report for a publicly released PDB entry.

We welcome your comments at validation@mail.wwpdb.org

A user guide is available at

<https://www.wwpdb.org/validation/2017/XrayValidationReportHelp>

with specific help available everywhere you see the ⓘ symbol.

The types of validation reports are described at

<http://www.wwpdb.org/validation/2017/FAQs#types>.

The following versions of software and data (see [references ⓘ](#)) were used in the production of this report:

MolProbity : 4.02b-467
Mogul : 1.8.5 (274361), CSD as541be (2020)
Xtrriage (Phenix) : 1.13
EDS : 2.36
buster-report : 1.1.7 (2018)
Percentile statistics : 20191225.v01 (using entries in the PDB archive December 25th 2019)
Refmac : 5.8.0158
CCP4 : 7.0.044 (Gargrove)
Ideal geometry (proteins) : Engh & Huber (2001)
Ideal geometry (DNA, RNA) : Parkinson et al. (1996)
Validation Pipeline (wwPDB-VP) : 2.36

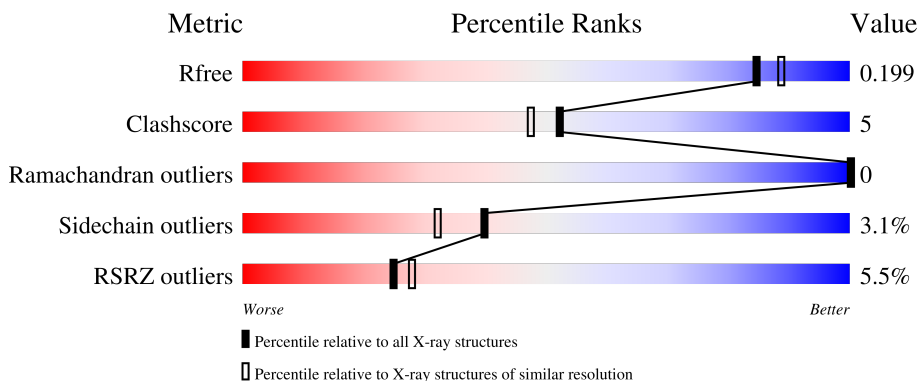
1 Overall quality at a glance

The following experimental techniques were used to determine the structure:

X-RAY DIFFRACTION


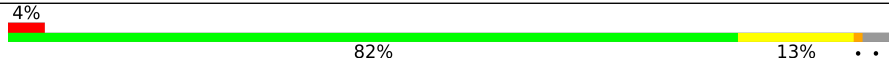
The reported resolution of this entry is 1.91 Å.

Percentile scores (ranging between 0-100) for global validation metrics of the entry are shown in the following graphic. The table shows the number of entries on which the scores are based.



Metric	Whole archive (#Entries)	Similar resolution (#Entries, resolution range(Å))
R_{free}	130704	6207 (1.90-1.90)
Clashscore	141614	6847 (1.90-1.90)
Ramachandran outliers	138981	6760 (1.90-1.90)
Sidechain outliers	138945	6760 (1.90-1.90)
RSRZ outliers	127900	6082 (1.90-1.90)

The table below summarises the geometric issues observed across the polymeric chains and their fit to the electron density. The red, orange, yellow and green segments of the lower bar indicate the fraction of residues that contain outliers for ≥ 3 , 2, 1 and 0 types of geometric quality criteria respectively. A grey segment represents the fraction of residues that are not modelled. The numeric value for each fraction is indicated below the corresponding segment, with a dot representing fractions $\leq 5\%$. The upper red bar (where present) indicates the fraction of residues that have poor fit to the electron density. The numeric value is given above the bar.

Mol	Chain	Length	Quality of chain
1	A	411	 6% 85% 13%
1	B	411	 4% 82% 13%

2 Entry composition

There are 4 unique types of molecules in this entry. The entry contains 7208 atoms, of which 0 are hydrogens and 0 are deuteriums.

In the tables below, the ZeroOcc column contains the number of atoms modelled with zero occupancy, the AltConf column contains the number of residues with at least one atom in alternate conformation and the Trace column contains the number of residues modelled with at most 2 atoms.

- Molecule 1 is a protein called Threonine-tRNA ligase.

Mol	Chain	Residues	Atoms					ZeroOcc	AltConf	Trace
			Total	C	N	O	S			
1	A	409	Total	C	N	O	S	0	0	0
			3354	2116	596	619	23			
1	B	398	Total	C	N	O	S	0	0	0
			3251	2053	573	602	23			

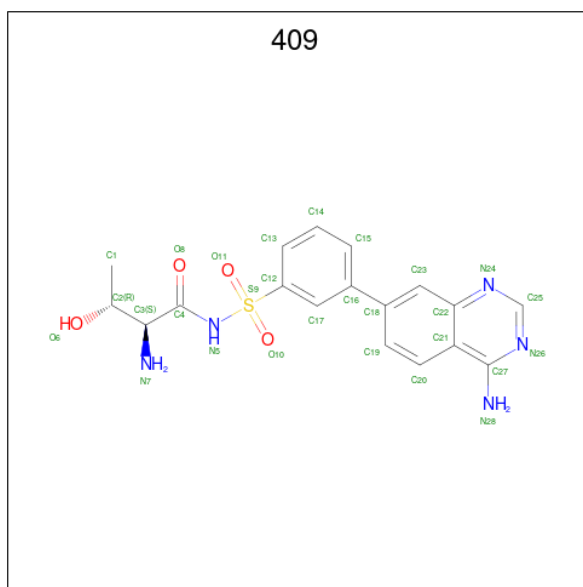
There are 20 discrepancies between the modelled and reference sequences:

Chain	Residue	Modelled	Actual	Comment	Reference
A	240	MET	-	expression tag	UNP P0A8M3
A	241	ALA	-	expression tag	UNP P0A8M3
A	643	LEU	-	expression tag	UNP P0A8M3
A	644	GLU	-	expression tag	UNP P0A8M3
A	645	HIS	-	expression tag	UNP P0A8M3
A	646	HIS	-	expression tag	UNP P0A8M3
A	647	HIS	-	expression tag	UNP P0A8M3
A	648	HIS	-	expression tag	UNP P0A8M3
A	649	HIS	-	expression tag	UNP P0A8M3
A	650	HIS	-	expression tag	UNP P0A8M3
B	240	MET	-	expression tag	UNP P0A8M3
B	241	ALA	-	expression tag	UNP P0A8M3
B	643	LEU	-	expression tag	UNP P0A8M3
B	644	GLU	-	expression tag	UNP P0A8M3
B	645	HIS	-	expression tag	UNP P0A8M3
B	646	HIS	-	expression tag	UNP P0A8M3
B	647	HIS	-	expression tag	UNP P0A8M3
B	648	HIS	-	expression tag	UNP P0A8M3
B	649	HIS	-	expression tag	UNP P0A8M3
B	650	HIS	-	expression tag	UNP P0A8M3

- Molecule 2 is ZINC ION (three-letter code: ZN) (formula: Zn).

Mol	Chain	Residues	Atoms	ZeroOcc	AltConf
2	A	1	Total Zn 1 1	0	0
2	B	1	Total Zn 1 1	0	0

- Molecule 3 is N-{{3-(4-aminoquinazolin-7-yl)phenyl}sulfonyl}-L-threoninamide (three-letter code: 409) (formula: C₁₈H₁₉N₅O₄S).



Mol	Chain	Residues	Atoms	ZeroOcc	AltConf
3	A	1	Total C N O S 28 18 5 4 1	0	0
3	B	1	Total C N O S 28 18 5 4 1	0	0

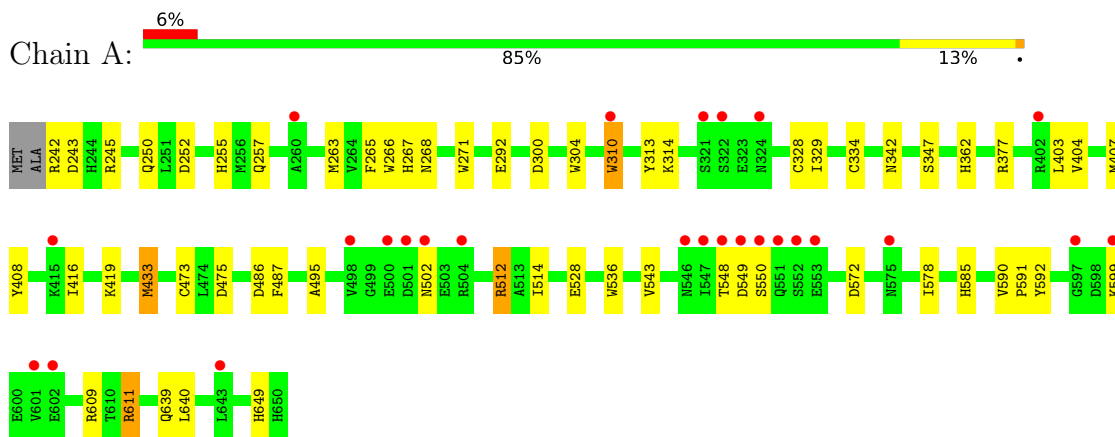
- Molecule 4 is water.

Mol	Chain	Residues	Atoms	ZeroOcc	AltConf
4	A	260	Total O 260 260	0	0
4	B	285	Total O 285 285	0	0

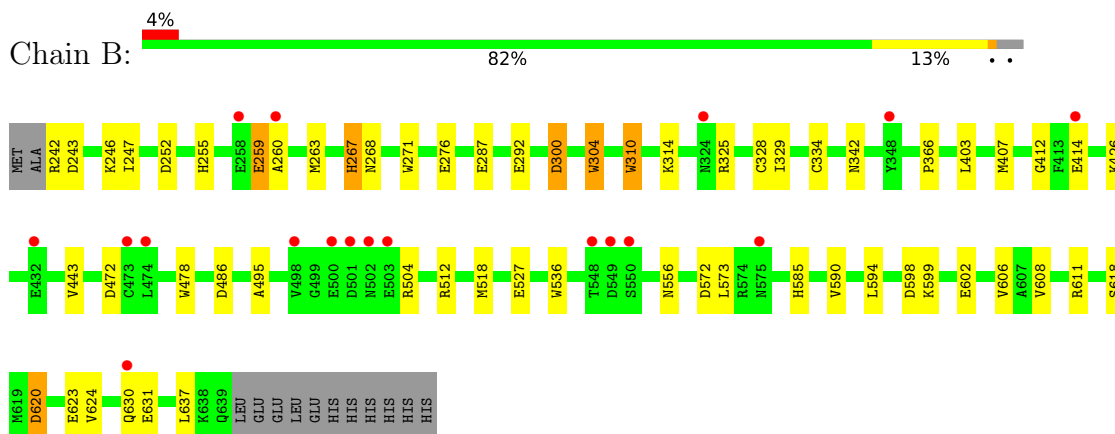
3 Residue-property plots [i](#)

These plots are drawn for all protein, RNA, DNA and oligosaccharide chains in the entry. The first graphic for a chain summarises the proportions of the various outlier classes displayed in the second graphic. The second graphic shows the sequence view annotated by issues in geometry and electron density. Residues are color-coded according to the number of geometric quality criteria for which they contain at least one outlier: green = 0, yellow = 1, orange = 2 and red = 3 or more. A red dot above a residue indicates a poor fit to the electron density ($RSRZ > 2$). Stretches of 2 or more consecutive residues without any outlier are shown as a green connector. Residues present in the sample, but not in the model, are shown in grey.

- Molecule 1: Threonine-tRNA ligase



- Molecule 1: Threonine-tRNA ligase



4 Data and refinement statistics i

Property	Value	Source
Space group	P 21 21 21	Depositor
Cell constants a, b, c, α , β , γ	85.90Å 110.30Å 114.36Å 90.00° 90.00° 90.00°	Depositor
Resolution (Å)	37.78 – 1.91 37.78 – 1.91	Depositor EDS
% Data completeness (in resolution range)	96.5 (37.78-1.91) 96.5 (37.78-1.91)	Depositor EDS
R_{merge}	(Not available)	Depositor
R_{sym}	0.06	Depositor
$\langle I/\sigma(I) \rangle$ ¹	4.83 (at 1.91Å)	Xtrriage
Refinement program	REFMAC 5.6.0117	Depositor
R, R_{free}	0.184 , 0.200 0.183 , 0.199	Depositor DCC
R_{free} test set	4112 reflections (5.00%)	wwPDB-VP
Wilson B-factor (Å ²)	20.5	Xtrriage
Anisotropy	0.067	Xtrriage
Bulk solvent k_{sol} (e/Å ³), B_{sol} (Å ²)	0.38 , 47.8	EDS
L-test for twinning ²	$\langle L \rangle = 0.49$, $\langle L^2 \rangle = 0.33$	Xtrriage
Estimated twinning fraction	0.011 for -h,l,k	Xtrriage
F_o, F_c correlation	0.95	EDS
Total number of atoms	7208	wwPDB-VP
Average B, all atoms (Å ²)	24.0	wwPDB-VP

Xtrriage's analysis on translational NCS is as follows: *The largest off-origin peak in the Patterson function is 4.66% of the height of the origin peak. No significant pseudotranslation is detected.*

¹Intensities estimated from amplitudes.

²Theoretical values of $\langle |L| \rangle$, $\langle L^2 \rangle$ for acentric reflections are 0.5, 0.333 respectively for untwinned datasets, and 0.375, 0.2 for perfectly twinned datasets.

5 Model quality [i](#)

5.1 Standard geometry [i](#)

Bond lengths and bond angles in the following residue types are not validated in this section: 409, ZN

The Z score for a bond length (or angle) is the number of standard deviations the observed value is removed from the expected value. A bond length (or angle) with $|Z| > 5$ is considered an outlier worth inspection. RMSZ is the root-mean-square of all Z scores of the bond lengths (or angles).

Mol	Chain	Bond lengths		Bond angles	
		RMSZ	# $ Z > 5$	RMSZ	# $ Z > 5$
1	A	0.76	4/3431 (0.1%)	0.79	5/4621 (0.1%)
1	B	0.76	5/3322 (0.2%)	0.80	4/4473 (0.1%)
All	All	0.76	9/6753 (0.1%)	0.80	9/9094 (0.1%)

All (9) bond length outliers are listed below:

Mol	Chain	Res	Type	Atoms	Z	Observed(Å)	Ideal(Å)
1	A	266	TRP	CD2-CE2	6.14	1.48	1.41
1	A	536	TRP	CD2-CE2	5.79	1.48	1.41
1	B	271	TRP	CD2-CE2	5.70	1.48	1.41
1	A	310	TRP	CD2-CE2	5.54	1.48	1.41
1	B	310	TRP	CD2-CE2	5.52	1.48	1.41
1	B	478	TRP	CD2-CE2	5.48	1.48	1.41
1	B	304	TRP	CD2-CE2	5.46	1.47	1.41
1	A	271	TRP	CD2-CE2	5.24	1.47	1.41
1	B	536	TRP	CD2-CE2	5.12	1.47	1.41

All (9) bond angle outliers are listed below:

Mol	Chain	Res	Type	Atoms	Z	Observed(°)	Ideal(°)
1	A	611	ARG	NE-CZ-NH1	7.83	124.21	120.30
1	A	611	ARG	NE-CZ-NH2	-6.47	117.06	120.30
1	B	518	MET	CG-SD-CE	-6.03	90.55	100.20
1	B	243	ASP	CB-CG-OD2	5.85	123.56	118.30
1	B	486	ASP	CB-CG-OD1	5.70	123.43	118.30
1	A	300	ASP	CB-CG-OD1	5.50	123.25	118.30
1	A	512	ARG	NE-CZ-NH2	-5.35	117.62	120.30
1	B	300	ASP	CB-CG-OD2	5.35	123.12	118.30
1	A	486	ASP	CB-CG-OD1	5.20	122.98	118.30

There are no chirality outliers.

There are no planarity outliers.

5.2 Too-close contacts

In the following table, the Non-H and H(model) columns list the number of non-hydrogen atoms and hydrogen atoms in the chain respectively. The H(added) column lists the number of hydrogen atoms added and optimized by MolProbity. The Clashes column lists the number of clashes within the asymmetric unit, whereas Symm-Clashes lists symmetry-related clashes.

Mol	Chain	Non-H	H(model)	H(added)	Clashes	Symm-Clashes
1	A	3354	0	3267	43	0
1	B	3251	0	3185	34	0
2	A	1	0	0	0	0
2	B	1	0	0	0	0
3	A	28	0	17	0	0
3	B	28	0	17	0	0
4	A	260	0	0	7	0
4	B	285	0	0	5	0
All	All	7208	0	6486	72	0

The all-atom clashscore is defined as the number of clashes found per 1000 atoms (including hydrogen atoms). The all-atom clashscore for this structure is 5.

All (72) close contacts within the same asymmetric unit are listed below, sorted by their clash magnitude.

Atom-1	Atom-2	Interatomic distance (Å)	Clash overlap (Å)
1:A:255:HIS:HD1	1:A:267:HIS:HE1	1.04	1.03
1:A:242:ARG:HH22	1:A:250:GLN:HE22	0.98	0.94
1:A:528:GLU:OE1	1:A:649:HIS:HD2	1.55	0.89
1:A:255:HIS:HD1	1:A:267:HIS:CE1	1.92	0.87
1:A:403:LEU:HD11	1:A:407:MET:HE2	1.61	0.83
1:A:639:GLN:OE1	4:A:1060:HOH:O	1.97	0.81
1:B:255:HIS:ND1	1:B:267:HIS:HE1	1.79	0.80
1:A:263:MET:HE3	4:B:803:HOH:O	1.81	0.78
1:B:443:VAL:HG22	4:B:1077:HOH:O	1.86	0.75
1:A:252:ASP:OD1	1:A:267:HIS:HD2	1.73	0.71
1:A:268:ASN:HD22	1:B:292:GLU:H	1.41	0.69
1:B:620:ASP:OD2	1:B:623:GLU:HB2	1.94	0.67
1:A:609:ARG:HD2	4:A:1013:HOH:O	1.93	0.67
1:A:242:ARG:HH22	1:A:250:GLN:NE2	1.83	0.66
1:A:528:GLU:OE1	1:A:649:HIS:CD2	2.45	0.65

Continued on next page...

Continued from previous page...

Atom-1	Atom-2	Interatomic distance (Å)	Clash overlap (Å)
1:A:242:ARG:NH2	1:A:250:GLN:HE22	1.84	0.64
1:B:572:ASP:OD2	1:B:585:HIS:HE1	1.80	0.64
1:A:329:ILE:HD11	1:B:329:ILE:HD11	1.78	0.64
1:A:403:LEU:HD11	1:A:407:MET:CE	2.26	0.64
1:A:585:HIS:HD2	4:A:924:HOH:O	1.80	0.64
1:B:252:ASP:OD1	1:B:267:HIS:HD2	1.79	0.64
1:A:592:TYR:OH	1:A:639:GLN:HG3	1.98	0.63
1:A:403:LEU:HG	1:A:407:MET:HE3	1.82	0.62
1:A:475:ASP:OD1	1:A:649:HIS:HE1	1.83	0.61
1:A:292:GLU:H	1:B:268:ASN:HD22	1.48	0.60
1:B:255:HIS:ND1	1:B:267:HIS:CE1	2.67	0.59
1:B:598:ASP:O	1:B:602:GLU:HG2	2.02	0.59
1:B:310:TRP:O	1:B:314:LYS:HB2	2.03	0.58
1:A:255:HIS:ND1	1:A:267:HIS:HE1	1.88	0.58
1:B:556:ASN:HD21	1:B:573:LEU:HD11	1.68	0.58
1:B:620:ASP:OD2	1:B:623:GLU:CB	2.51	0.58
1:B:585:HIS:HD2	4:B:815:HOH:O	1.86	0.57
1:A:572:ASP:OD2	1:A:585:HIS:HE1	1.87	0.57
1:B:366:PRO:HD2	4:B:1085:HOH:O	2.05	0.56
1:B:259:GLU:H	1:B:259:GLU:CD	2.09	0.55
1:A:257:GLN:HG3	1:A:265:PHE:CE2	2.42	0.55
1:B:403:LEU:HD11	1:B:407:MET:HE2	1.88	0.54
1:B:594:LEU:HD22	1:B:608:VAL:HG22	1.90	0.54
1:B:403:LEU:HG	1:B:407:MET:HE3	1.90	0.53
1:B:242:ARG:HH21	1:B:246:LYS:HD3	1.73	0.52
1:B:342:ASN:HD21	1:B:495:ALA:HA	1.76	0.51
1:A:342:ASN:HD21	1:A:495:ALA:HA	1.74	0.51
1:B:412:GLY:HA3	1:B:637:LEU:HD11	1.93	0.51
1:B:414:GLU:HG3	4:B:1021:HOH:O	2.11	0.50
1:A:543:VAL:HG23	1:A:590:VAL:HG11	1.93	0.49
1:A:243:ASP:OD2	1:A:245:ARG:HB2	2.13	0.47
1:A:310:TRP:O	1:A:314:LYS:HB2	2.14	0.47
1:A:473:CYS:HB2	4:A:905:HOH:O	2.14	0.47
1:A:403:LEU:CG	1:A:407:MET:HE3	2.43	0.47
1:B:300:ASP:OD1	1:B:325:ARG:NH1	2.44	0.47
1:A:419:LYS:HE2	4:A:977:HOH:O	2.14	0.47
1:A:590:VAL:O	1:A:611:ARG:HB3	2.16	0.45
1:B:630:GLN:HG3	1:B:631:GLU:OE1	2.17	0.45
1:A:304:TRP:CD1	1:A:328:CYS:HB2	2.52	0.45
1:A:404:VAL:HA	1:A:514:ILE:HG23	1.99	0.45
1:A:268:ASN:ND2	1:B:292:GLU:H	2.11	0.44

Continued on next page...

Continued from previous page...

Atom-1	Atom-2	Interatomic distance (Å)	Clash overlap (Å)
1:B:590:VAL:O	1:B:611:ARG:HB3	2.17	0.44
1:A:592:TYR:CZ	1:A:639:GLN:HG3	2.52	0.44
1:B:260:ALA:HB1	1:B:263:MET:HB2	1.99	0.44
4:A:806:HOH:O	1:B:263:MET:HE3	2.18	0.44
1:B:472:ASP:HB2	1:B:527:GLU:OE1	2.18	0.43
1:A:548:THR:OG1	1:A:550:SER:HB3	2.17	0.43
1:A:292:GLU:H	1:B:268:ASN:ND2	2.14	0.43
1:A:591:PRO:O	1:A:639:GLN:NE2	2.51	0.42
1:B:304:TRP:CD1	1:B:328:CYS:HB2	2.54	0.42
1:B:594:LEU:HD13	1:B:606:VAL:HG21	2.02	0.41
1:A:408:TYR:CD2	1:A:416:ILE:HD13	2.55	0.41
1:A:585:HIS:CD2	4:A:924:HOH:O	2.62	0.41
1:A:362:HIS:HA	1:A:377:ARG:O	2.21	0.41
1:B:242:ARG:HB3	1:B:247:ILE:HD11	2.02	0.41
1:A:403:LEU:CD1	1:A:407:MET:CE	2.98	0.40
1:A:433:MET:HG3	1:A:487:PHE:HB2	2.03	0.40

There are no symmetry-related clashes.

5.3 Torsion angles [i](#)

5.3.1 Protein backbone [i](#)

In the following table, the Percentiles column shows the percent Ramachandran outliers of the chain as a percentile score with respect to all X-ray entries followed by that with respect to entries of similar resolution.

The Analysed column shows the number of residues for which the backbone conformation was analysed, and the total number of residues.

Mol	Chain	Analysed	Favoured	Allowed	Outliers	Percentiles	
1	A	407/411 (99%)	402 (99%)	5 (1%)	0	100	100
1	B	396/411 (96%)	389 (98%)	7 (2%)	0	100	100
All	All	803/822 (98%)	791 (98%)	12 (2%)	0	100	100

There are no Ramachandran outliers to report.

5.3.2 Protein sidechains [i](#)

In the following table, the Percentiles column shows the percent sidechain outliers of the chain as a percentile score with respect to all X-ray entries followed by that with respect to entries of similar resolution.

The Analysed column shows the number of residues for which the sidechain conformation was analysed, and the total number of residues.

Mol	Chain	Analysed	Rotameric	Outliers	Percentiles	
1	A	364/365 (100%)	354 (97%)	10 (3%)	44	38
1	B	353/365 (97%)	341 (97%)	12 (3%)	37	28
All	All	717/730 (98%)	695 (97%)	22 (3%)	40	32

All (22) residues with a non-rotameric sidechain are listed below:

Mol	Chain	Res	Type
1	A	313	TYR
1	A	334	CYS
1	A	347	SER
1	A	433	MET
1	A	502	ASN
1	A	512	ARG
1	A	549	ASP
1	A	578	ILE
1	A	599	LYS
1	A	640	LEU
1	B	259	GLU
1	B	267	HIS
1	B	276	GLU
1	B	287	GLU
1	B	334	CYS
1	B	426	LYS
1	B	504	ARG
1	B	512	ARG
1	B	599	LYS
1	B	618	SER
1	B	620	ASP
1	B	624	VAL

Sometimes sidechains can be flipped to improve hydrogen bonding and reduce clashes. All (18) such sidechains are listed below:

Mol	Chain	Res	Type
1	A	250	GLN
1	A	257	GLN
1	A	267	HIS
1	A	268	ASN
1	A	291	GLN
1	A	324	ASN
1	A	342	ASN
1	A	455	GLN
1	A	556	ASN
1	A	585	HIS
1	A	649	HIS
1	B	267	HIS
1	B	268	ASN
1	B	291	GLN
1	B	312	ASN
1	B	342	ASN
1	B	556	ASN
1	B	585	HIS

5.3.3 RNA [i](#)

There are no RNA molecules in this entry.

5.4 Non-standard residues in protein, DNA, RNA chains [i](#)

There are no non-standard protein/DNA/RNA residues in this entry.

5.5 Carbohydrates [i](#)

There are no monosaccharides in this entry.

5.6 Ligand geometry [i](#)

Of 4 ligands modelled in this entry, 2 are monoatomic - leaving 2 for Mogul analysis.

In the following table, the Counts columns list the number of bonds (or angles) for which Mogul statistics could be retrieved, the number of bonds (or angles) that are observed in the model and the number of bonds (or angles) that are defined in the Chemical Component Dictionary. The Link column lists molecule types, if any, to which the group is linked. The Z score for a bond length (or angle) is the number of standard deviations the observed value is removed from the expected value. A bond length (or angle) with $|Z| > 2$ is considered an outlier worth inspection. RMSZ is the root-mean-square of all Z scores of the bond lengths (or angles).

Mol	Type	Chain	Res	Link	Bond lengths			Bond angles		
					Counts	RMSZ	# Z > 2	Counts	RMSZ	# Z > 2
3	409	B	702	2	30,30,30	2.13	6 (20%)	42,44,44	2.19	11 (26%)
3	409	A	702	2	30,30,30	1.96	6 (20%)	42,44,44	2.09	8 (19%)

In the following table, the Chirals column lists the number of chiral outliers, the number of chiral centers analysed, the number of these observed in the model and the number defined in the Chemical Component Dictionary. Similar counts are reported in the Torsion and Rings columns. '-' means no outliers of that kind were identified.

Mol	Type	Chain	Res	Link	Chirals	Torsions	Rings
3	409	B	702	2	-	4/23/23/23	0/3/3/3
3	409	A	702	2	-	4/23/23/23	0/3/3/3

All (12) bond length outliers are listed below:

Mol	Chain	Res	Type	Atoms	Z	Observed(Å)	Ideal(Å)
3	B	702	409	C12-S9	-9.11	1.62	1.76
3	A	702	409	C12-S9	-7.87	1.64	1.76
3	A	702	409	C27-C21	3.63	1.48	1.45
3	B	702	409	C25-N24	3.23	1.37	1.32
3	B	702	409	C27-C21	2.79	1.48	1.45
3	B	702	409	C21-C22	2.75	1.47	1.42
3	A	702	409	C21-C22	2.66	1.46	1.42
3	A	702	409	C25-N24	2.49	1.36	1.32
3	B	702	409	C4-N5	-2.30	1.33	1.37
3	B	702	409	C3-C4	-2.21	1.51	1.53
3	A	702	409	C3-C4	-2.16	1.51	1.53
3	A	702	409	C4-N5	-2.14	1.33	1.37

All (19) bond angle outliers are listed below:

Mol	Chain	Res	Type	Atoms	Z	Observed(°)	Ideal(°)
3	B	702	409	O11-S9-O10	-6.27	111.85	119.55
3	A	702	409	O11-S9-O10	-5.88	112.33	119.55
3	B	702	409	C23-C22-N24	4.93	123.59	117.97
3	A	702	409	C23-C22-N24	4.66	123.28	117.97
3	B	702	409	C12-S9-N5	4.43	112.68	105.97
3	A	702	409	C12-S9-N5	4.39	112.62	105.97
3	A	702	409	C21-C22-N24	-4.28	118.28	122.83
3	B	702	409	C25-N24-C22	4.24	121.24	115.40
3	A	702	409	C25-N24-C22	4.13	121.09	115.40
3	B	702	409	N24-C25-N26	-4.03	122.38	128.68

Continued on next page...

Continued from previous page...

Mol	Chain	Res	Type	Atoms	Z	Observed(°)	Ideal(°)
3	B	702	409	C21-C22-N24	-3.80	118.78	122.83
3	A	702	409	N24-C25-N26	-3.54	123.15	128.68
3	A	702	409	C21-C27-N26	-3.51	118.28	121.93
3	B	702	409	C21-C27-N26	-3.18	118.62	121.93
3	B	702	409	C21-C27-N28	-2.91	117.03	121.54
3	B	702	409	N28-C27-N26	2.78	124.34	118.57
3	A	702	409	C14-C13-C12	2.57	121.62	118.95
3	B	702	409	C20-C21-C22	2.41	121.03	118.33
3	B	702	409	O10-S9-C12	-2.00	105.50	107.97

There are no chirality outliers.

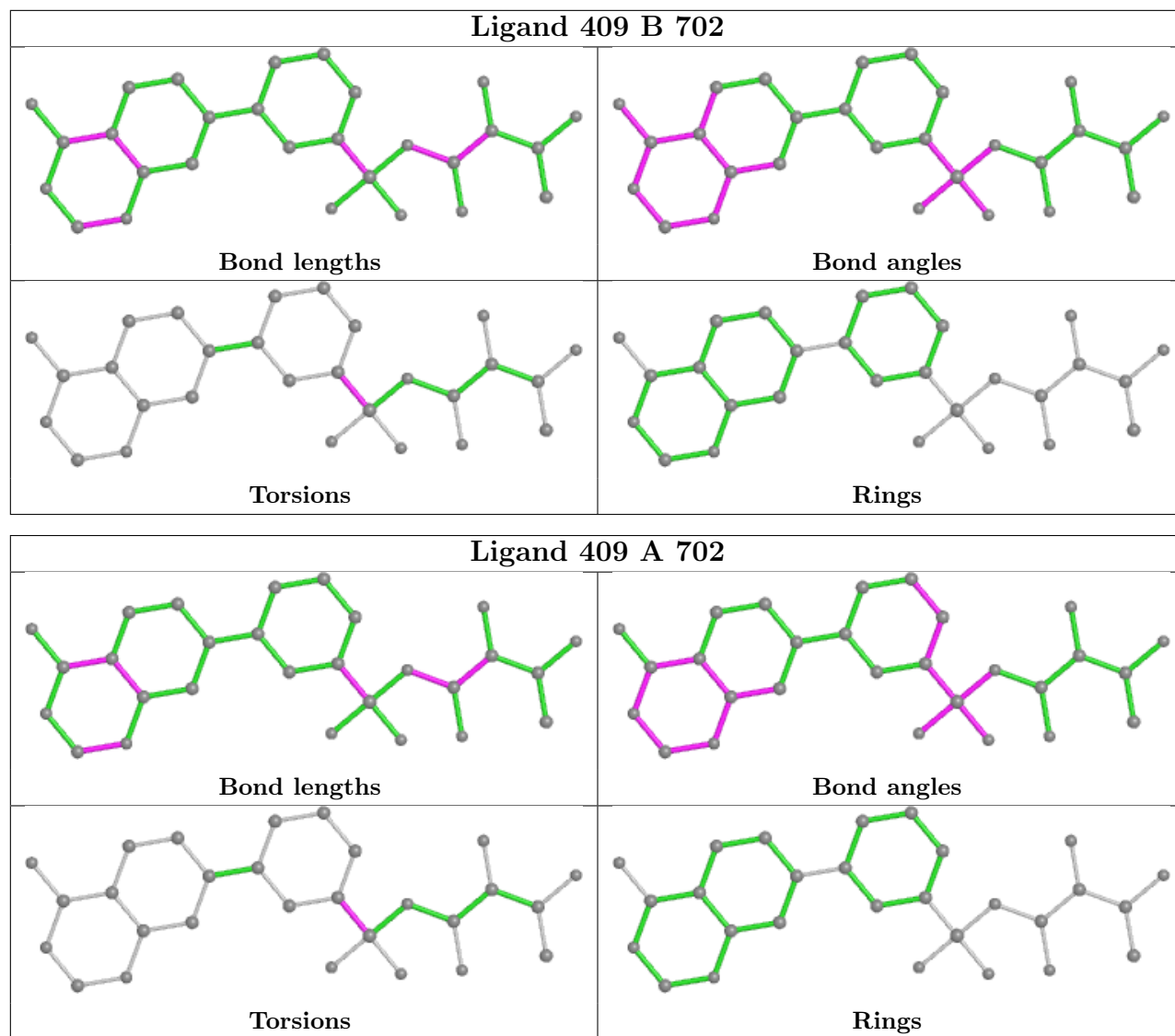
All (8) torsion outliers are listed below:

Mol	Chain	Res	Type	Atoms
3	A	702	409	C17-C12-S9-O10
3	B	702	409	C13-C12-S9-O10
3	B	702	409	C17-C12-S9-O10
3	A	702	409	C13-C12-S9-O10
3	A	702	409	C13-C12-S9-N5
3	B	702	409	C13-C12-S9-N5
3	A	702	409	C17-C12-S9-N5
3	B	702	409	C17-C12-S9-N5

There are no ring outliers.

No monomer is involved in short contacts.

The following is a two-dimensional graphical depiction of Mogul quality analysis of bond lengths, bond angles, torsion angles, and ring geometry for all instances of the Ligand of Interest. In addition, ligands with molecular weight > 250 and outliers as shown on the validation Tables will also be included. For torsion angles, if less than 5% of the Mogul distribution of torsion angles is within 10 degrees of the torsion angle in question, then that torsion angle is considered an outlier. Any bond that is central to one or more torsion angles identified as an outlier by Mogul will be highlighted in the graph. For rings, the root-mean-square deviation (RMSD) between the ring in question and similar rings identified by Mogul is calculated over all ring torsion angles. If the average RMSD is greater than 60 degrees and the minimal RMSD between the ring in question and any Mogul-identified rings is also greater than 60 degrees, then that ring is considered an outlier. The outliers are highlighted in purple. The color gray indicates Mogul did not find sufficient equivalents in the CSD to analyse the geometry.



5.7 Other polymers [i](#)

There are no such residues in this entry.

5.8 Polymer linkage issues [i](#)

There are no chain breaks in this entry.

6 Fit of model and data

6.1 Protein, DNA and RNA chains

In the following table, the column labelled ‘#RSRZ > 2’ contains the number (and percentage) of RSRZ outliers, followed by percent RSRZ outliers for the chain as percentile scores relative to all X-ray entries and entries of similar resolution. The OWAB column contains the minimum, median, 95th percentile and maximum values of the occupancy-weighted average B-factor per residue. The column labelled ‘Q < 0.9’ lists the number of (and percentage) of residues with an average occupancy less than 0.9.

Mol	Chain	Analysed	<RSRZ>	#RSRZ>2	OWAB(Å ²)	Q<0.9
1	A	409/411 (99%)	0.27	26 (6%) 19 22	12, 21, 47, 70	0
1	B	398/411 (96%)	0.12	18 (4%) 33 36	11, 20, 41, 89	0
All	All	807/822 (98%)	0.19	44 (5%) 25 28	11, 20, 44, 89	0

All (44) RSRZ outliers are listed below:

Mol	Chain	Res	Type	RSRZ
1	B	503	GLU	4.4
1	B	498	VAL	4.3
1	A	548	THR	4.2
1	B	501	ASP	4.0
1	A	602	GLU	3.9
1	A	324	ASN	3.8
1	B	500	GLU	3.7
1	B	324	ASN	3.6
1	A	575	ASN	3.6
1	A	502	ASN	3.5
1	A	549	ASP	3.5
1	A	597	GLY	3.4
1	A	322	SER	3.3
1	A	550	SER	3.3
1	B	549	ASP	3.2
1	A	500	GLU	3.2
1	B	473	CYS	3.0
1	A	501	ASP	2.9
1	A	599	LYS	2.8
1	A	551	GLN	2.8
1	A	321	SER	2.8
1	A	547	ILE	2.7
1	A	553	GLU	2.7
1	A	643	LEU	2.6

Continued on next page...

Continued from previous page...

Mol	Chain	Res	Type	RSRZ
1	B	502	ASN	2.6
1	B	258	GLU	2.5
1	A	552	SER	2.5
1	A	498	VAL	2.4
1	B	575	ASN	2.4
1	B	630	GLN	2.4
1	A	415	LYS	2.3
1	B	348	TYR	2.2
1	B	414	GLU	2.2
1	A	601	VAL	2.2
1	B	432	GLU	2.2
1	A	546	ASN	2.2
1	B	550	SER	2.2
1	A	402	ARG	2.2
1	B	260	ALA	2.2
1	B	548	THR	2.1
1	A	504	ARG	2.1
1	A	260	ALA	2.1
1	A	310	TRP	2.0
1	B	474	LEU	2.0

6.2 Non-standard residues in protein, DNA, RNA chains [i](#)

There are no non-standard protein/DNA/RNA residues in this entry.

6.3 Carbohydrates [i](#)

There are no monosaccharides in this entry.

6.4 Ligands [i](#)

In the following table, the Atoms column lists the number of modelled atoms in the group and the number defined in the chemical component dictionary. The B-factors column lists the minimum, median, 95th percentile and maximum values of B factors of atoms in the group. The column labelled 'Q< 0.9' lists the number of atoms with occupancy less than 0.9.

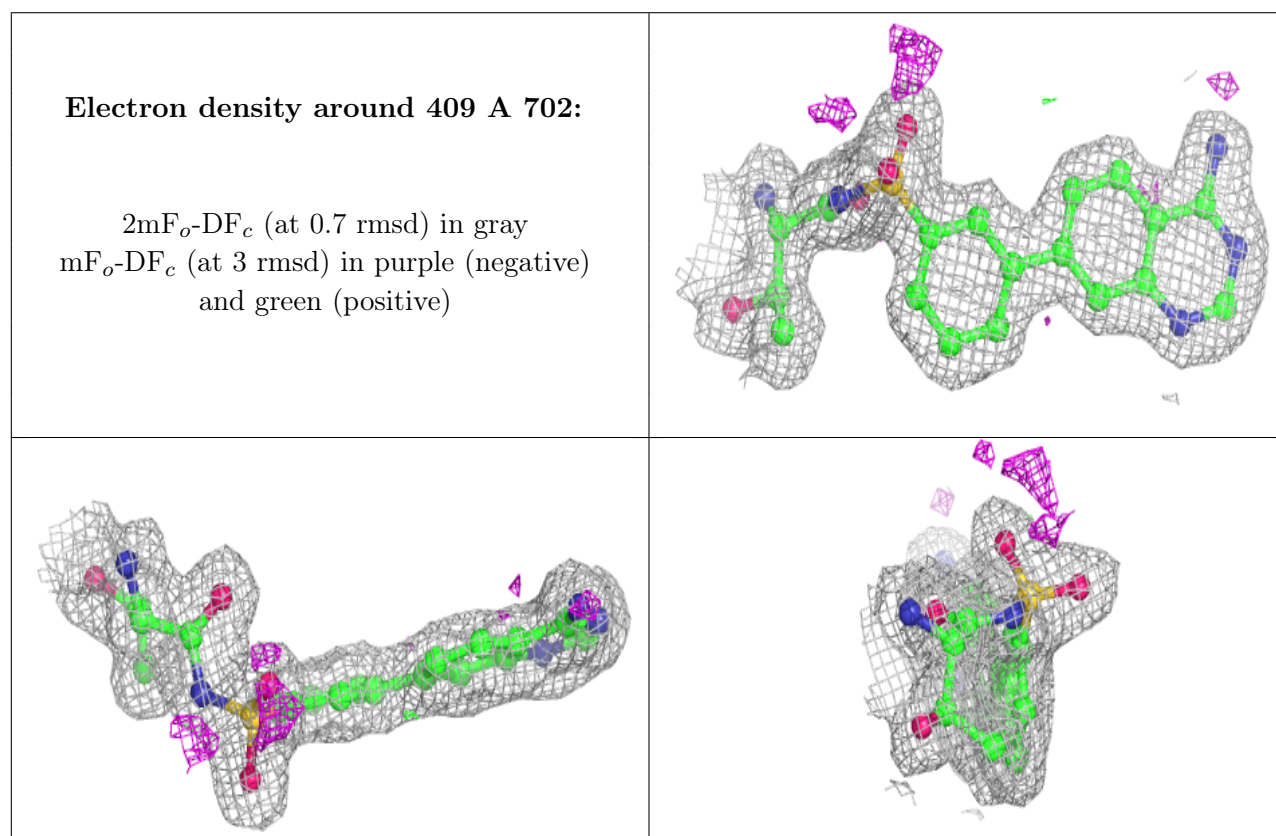
Mol	Type	Chain	Res	Atoms	RSCC	RSR	B-factors(Å ²)	Q<0.9
3	409	A	702	28/28	0.97	0.11	14,16,17,20	0
3	409	B	702	28/28	0.97	0.10	13,16,17,19	0
2	ZN	A	701	1/1	1.00	0.07	15,15,15,15	0

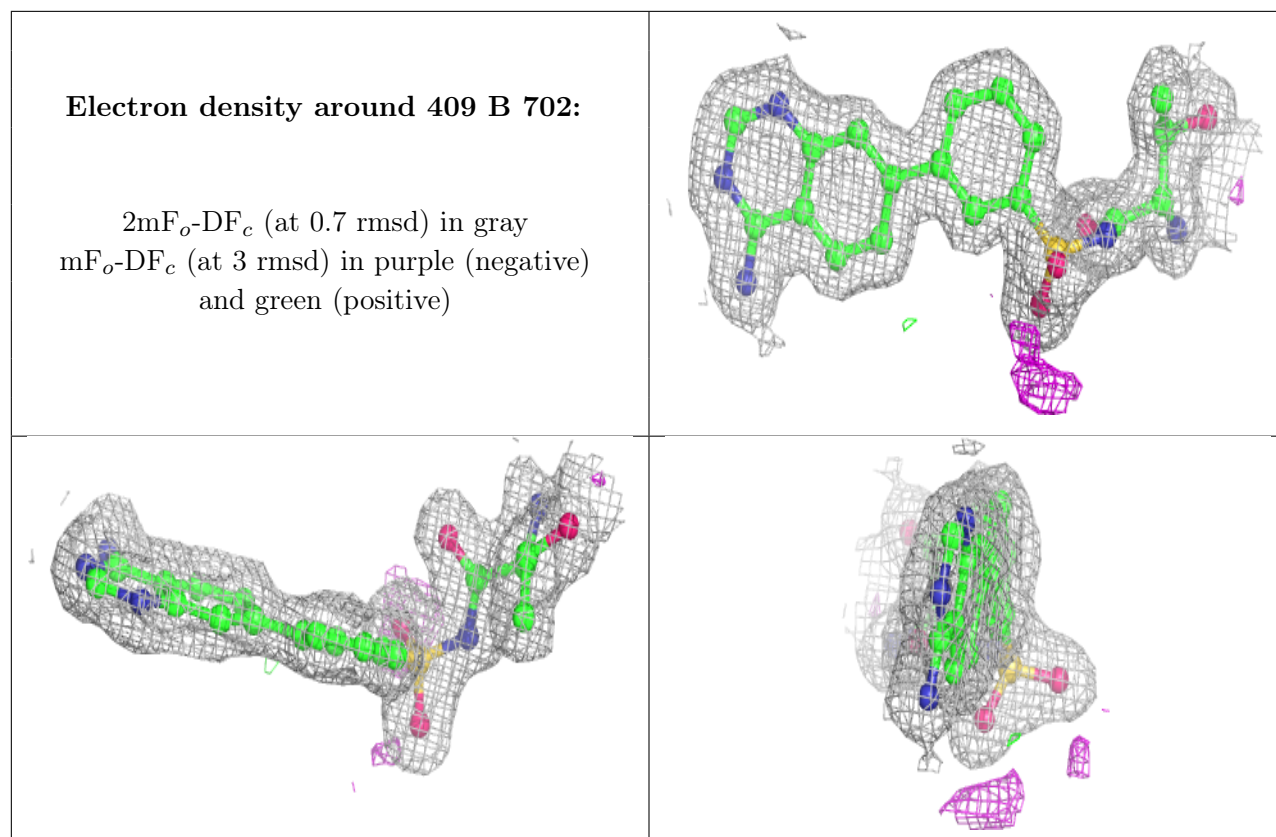
Continued on next page...

Continued from previous page...

Mol	Type	Chain	Res	Atoms	RSCC	RSR	B-factors(\AA^2)	Q<0.9
2	ZN	B	701	1/1	1.00	0.06	13,13,13,13	0

The following is a graphical depiction of the model fit to experimental electron density of all instances of the Ligand of Interest. In addition, ligands with molecular weight > 250 and outliers as shown on the geometry validation Tables will also be included. Each fit is shown from different orientation to approximate a three-dimensional view.





6.5 Other polymers [i](#)

There are no such residues in this entry.