



Full wwPDB X-ray Structure Validation Report ⓘ

Oct 16, 2023 – 01:24 AM EDT

PDB ID : 2HA3
Title : Crystal structure of mouse acetylcholinesterase complexed with choline
Authors : Bourne, Y.; Radic, Z.; Sulzenbacher, G.; Kim, E.; Taylor, P.; Marchot, P.
Deposited on : 2006-06-12
Resolution : 2.25 Å(reported)

This is a Full wwPDB X-ray Structure Validation Report for a publicly released PDB entry.

We welcome your comments at validation@mail.wwpdb.org

A user guide is available at

<https://www.wwpdb.org/validation/2017/XrayValidationReportHelp>

with specific help available everywhere you see the ⓘ symbol.

The types of validation reports are described at

<http://www.wwpdb.org/validation/2017/FAQs#types>.

The following versions of software and data (see [references ⓘ](#)) were used in the production of this report:

MolProbity : 4.02b-467
Mogul : 1.8.5 (274361), CSD as541be (2020)
Xtriage (Phenix) : 1.13
EDS : 2.36
buster-report : 1.1.7 (2018)
Percentile statistics : 20191225.v01 (using entries in the PDB archive December 25th 2019)
Refmac : 5.8.0158
CCP4 : 7.0.044 (Gargrove)
Ideal geometry (proteins) : Engh & Huber (2001)
Ideal geometry (DNA, RNA) : Parkinson et al. (1996)
Validation Pipeline (wwPDB-VP) : 2.36

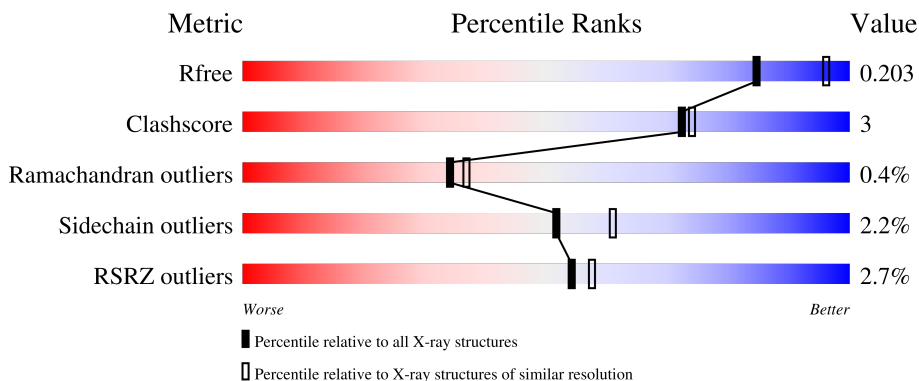
1 Overall quality at a glance

The following experimental techniques were used to determine the structure:

X-RAY DIFFRACTION

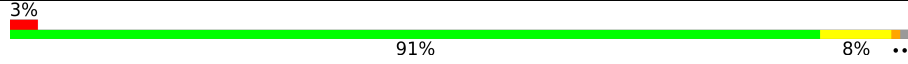
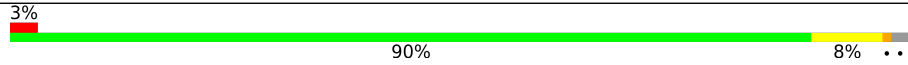
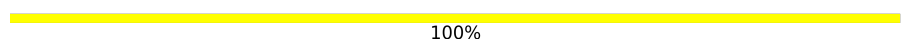
The reported resolution of this entry is 2.25 Å.

Percentile scores (ranging between 0-100) for global validation metrics of the entry are shown in the following graphic. The table shows the number of entries on which the scores are based.



Metric	Whole archive (#Entries)	Similar resolution (#Entries, resolution range(Å))
R_{free}	130704	1377 (2.26-2.26)
Clashscore	141614	1487 (2.26-2.26)
Ramachandran outliers	138981	1449 (2.26-2.26)
Sidechain outliers	138945	1450 (2.26-2.26)
RSRZ outliers	127900	1356 (2.26-2.26)

The table below summarises the geometric issues observed across the polymeric chains and their fit to the electron density. The red, orange, yellow and green segments of the lower bar indicate the fraction of residues that contain outliers for ≥ 3 , 2, 1 and 0 types of geometric quality criteria respectively. A grey segment represents the fraction of residues that are not modelled. The numeric value for each fraction is indicated below the corresponding segment, with a dot representing fractions $\leq 5\%$. The upper red bar (where present) indicates the fraction of residues that have poor fit to the electron density. The numeric value is given above the bar.

Mol	Chain	Length	Quality of chain
1	A	543	 3% 91% 8% ..
1	B	543	 3% 90% 8% ..
2	C	2	 100%

The following table lists non-polymeric compounds, carbohydrate monomers and non-standard residues in protein, DNA, RNA chains that are outliers for geometric or electron-density-fit criteria:

Mol	Type	Chain	Res	Chirality	Geometry	Clashes	Electron density
2	FUC	C	2	-	-	-	X
3	NAG	A	701	-	-	-	X
3	NAG	B	601	X	-	-	-

2 Entry composition [i](#)

There are 6 unique types of molecules in this entry. The entry contains 9213 atoms, of which 0 are hydrogens and 0 are deuteriums.

In the tables below, the ZeroOcc column contains the number of atoms modelled with zero occupancy, the AltConf column contains the number of residues with at least one atom in alternate conformation and the Trace column contains the number of residues modelled with at most 2 atoms.

- Molecule 1 is a protein called Acetylcholinesterase.

Mol	Chain	Residues	Atoms					ZeroOcc	AltConf	Trace
			Total	C	N	O	S			
1	A	538	4196	2692	728	762	14	0	0	0
1	B	534	4176	2681	720	761	14	0	2	0

- Molecule 2 is an oligosaccharide called alpha-L-fucopyranose-(1-6)-2-acetamido-2-deoxy-beta-D-glucopyranose.



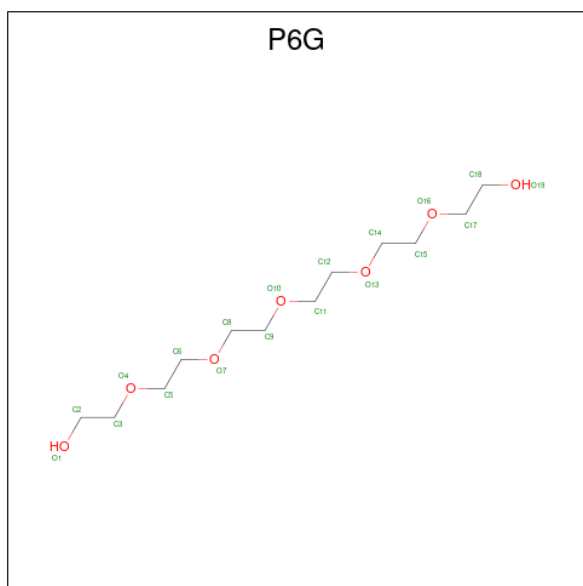
Mol	Chain	Residues	Atoms				ZeroOcc	AltConf	Trace
			Total	C	N	O			
2	C	2	24	14	1	9	0	0	0

- Molecule 3 is 2-acetamido-2-deoxy-beta-D-glucopyranose (three-letter code: NAG) (formula: C₈H₁₅NO₆).



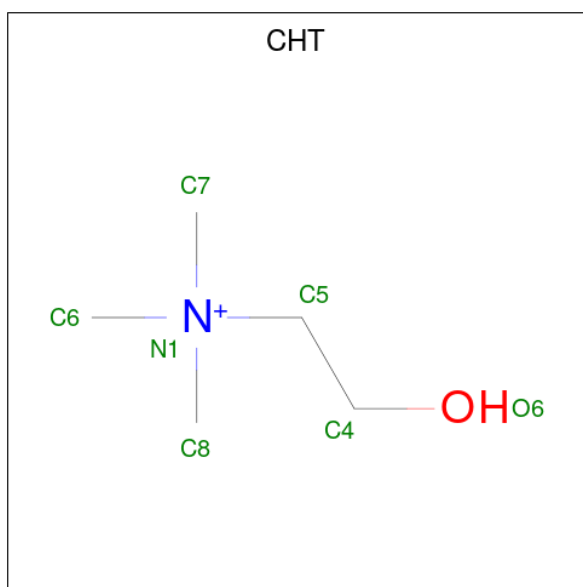
Mol	Chain	Residues	Atoms				ZeroOcc	AltConf
3	A	1	Total	C	N	O	0	0
			14	8	1	5		
3	B	1	Total	C	N	O	0	0
			14	8	1	5		

- Molecule 4 is HEXAETHYLENE GLYCOL (three-letter code: P6G) (formula: $C_{12}H_{26}O_7$).



Mol	Chain	Residues	Atoms			ZeroOcc	AltConf
4	A	1	Total	C	O	0	0
			19	12	7		

- Molecule 5 is CHOLINE ION (three-letter code: CHT) (formula: $C_5H_{14}NO$).



Mol	Chain	Residues	Atoms				ZeroOcc	AltConf
5	A	1	Total	C	N	O	0	0
			7	5	1	1		
5	A	1	Total	C	N	O	0	0
			7	5	1	1		
5	B	1	Total	C	N	O	0	0
			7	5	1	1		
5	B	1	Total	C	N	O	0	0
			7	5	1	1		

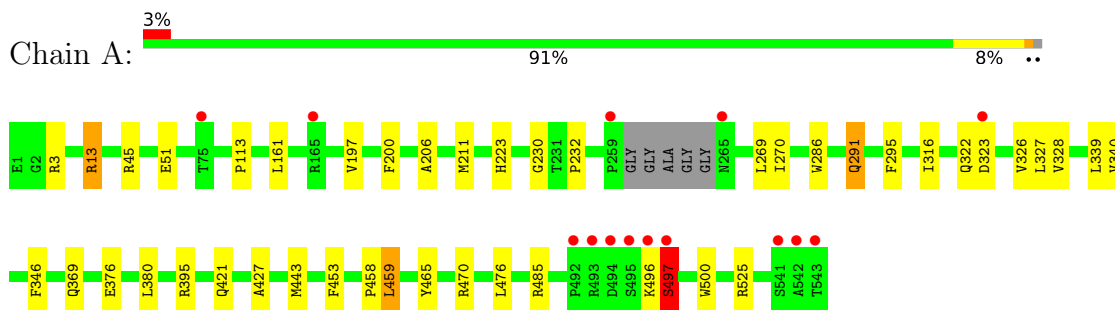
- Molecule 6 is water.

Mol	Chain	Residues	Atoms		ZeroOcc	AltConf
6	A	396	Total	O	0	0
			396	396		
6	B	346	Total	O	0	0
			346	346		

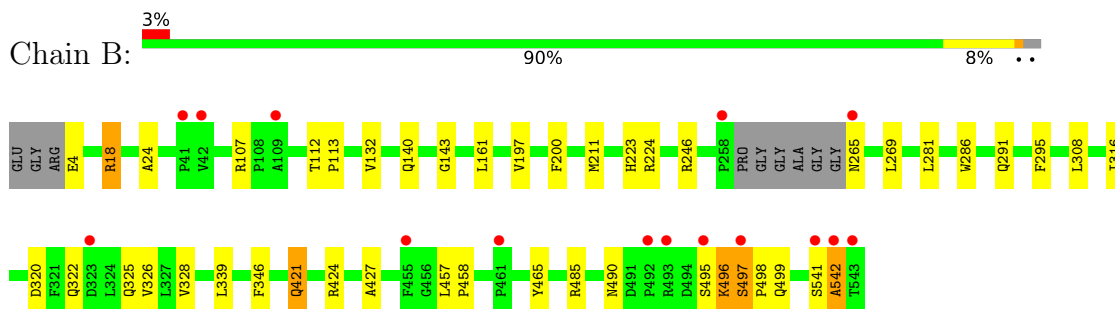
3 Residue-property plots [i](#)

These plots are drawn for all protein, RNA, DNA and oligosaccharide chains in the entry. The first graphic for a chain summarises the proportions of the various outlier classes displayed in the second graphic. The second graphic shows the sequence view annotated by issues in geometry and electron density. Residues are color-coded according to the number of geometric quality criteria for which they contain at least one outlier: green = 0, yellow = 1, orange = 2 and red = 3 or more. A red dot above a residue indicates a poor fit to the electron density ($RSRZ > 2$). Stretches of 2 or more consecutive residues without any outlier are shown as a green connector. Residues present in the sample, but not in the model, are shown in grey.

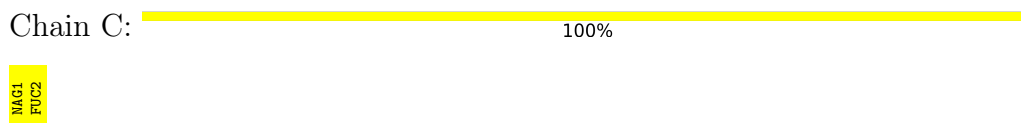
- Molecule 1: Acetylcholinesterase



- Molecule 1: Acetylcholinesterase



- Molecule 2: alpha-L-fucopyranose-(1-6)-2-acetamido-2-deoxy-beta-D-glucopyranose



4 Data and refinement statistics

Property	Value	Source
Space group	P 21 21 21	Depositor
Cell constants a, b, c, α , β , γ	79.39Å 111.87Å 227.15Å 89.97° 90.02° 90.04°	Depositor
Resolution (Å)	30.00 – 2.25 29.16 – 2.25	Depositor EDS
% Data completeness (in resolution range)	96.0 (30.00-2.25) 88.4 (29.16-2.25)	Depositor EDS
R_{merge}	0.07	Depositor
R_{sym}	(Not available)	Depositor
$\langle I/\sigma(I) \rangle$ ¹	2.86 (at 2.26Å)	Xtrriage
Refinement program	REFMAC 5.2.0019	Depositor
R, R_{free}	0.175 , 0.199 0.183 , 0.203	Depositor DCC
R_{free} test set	1845 reflections (1.99%)	wwPDB-VP
Wilson B-factor (Å ²)	34.4	Xtrriage
Anisotropy	0.683	Xtrriage
Bulk solvent k_{sol} (e/Å ³), B_{sol} (Å ²)	0.32 , 47.4	EDS
L-test for twinning ²	$\langle L \rangle = 0.49$, $\langle L^2 \rangle = 0.33$	Xtrriage
Estimated twinning fraction	No twinning to report.	Xtrriage
F_o, F_c correlation	0.96	EDS
Total number of atoms	9213	wwPDB-VP
Average B, all atoms (Å ²)	54.0	wwPDB-VP

Xtrriage's analysis on translational NCS is as follows: *The largest off-origin peak in the Patterson function is 2.57% of the height of the origin peak. No significant pseudotranslation is detected.*

¹Intensities estimated from amplitudes.

²Theoretical values of $\langle |L| \rangle$, $\langle L^2 \rangle$ for acentric reflections are 0.5, 0.333 respectively for untwinned datasets, and 0.375, 0.2 for perfectly twinned datasets.

5 Model quality [i](#)

5.1 Standard geometry [i](#)

Bond lengths and bond angles in the following residue types are not validated in this section: CHT, NAG, FUC, P6G

The Z score for a bond length (or angle) is the number of standard deviations the observed value is removed from the expected value. A bond length (or angle) with $|Z| > 5$ is considered an outlier worth inspection. RMSZ is the root-mean-square of all Z scores of the bond lengths (or angles).

Mol	Chain	Bond lengths		Bond angles	
		RMSZ	# Z >5	RMSZ	# Z >5
1	A	0.50	0/4321	0.64	1/5906 (0.0%)
1	B	0.47	0/4308	0.63	1/5888 (0.0%)
All	All	0.49	0/8629	0.63	2/11794 (0.0%)

There are no bond length outliers.

All (2) bond angle outliers are listed below:

Mol	Chain	Res	Type	Atoms	Z	Observed(°)	Ideal(°)
1	A	395	ARG	NE-CZ-NH2	-5.17	117.72	120.30
1	B	18	ARG	NE-CZ-NH2	-5.09	117.75	120.30

There are no chirality outliers.

There are no planarity outliers.

5.2 Too-close contacts [i](#)

In the following table, the Non-H and H(model) columns list the number of non-hydrogen atoms and hydrogen atoms in the chain respectively. The H(added) column lists the number of hydrogen atoms added and optimized by MolProbity. The Clashes column lists the number of clashes within the asymmetric unit, whereas Symm-Clashes lists symmetry-related clashes.

Mol	Chain	Non-H	H(model)	H(added)	Clashes	Symm-Clashes
1	A	4196	0	4079	27	0
1	B	4176	0	4059	30	0
2	C	24	0	22	0	0
3	A	14	0	13	0	0
3	B	14	0	13	0	0
4	A	19	0	26	0	0
5	A	14	0	28	1	0

Continued on next page...

Continued from previous page...

Mol	Chain	Non-H	H(model)	H(added)	Clashes	Symm-Clashes
5	B	14	0	28	3	0
6	A	396	0	0	1	0
6	B	346	0	0	2	0
All	All	9213	0	8268	57	0

The all-atom clashscore is defined as the number of clashes found per 1000 atoms (including hydrogen atoms). The all-atom clashscore for this structure is 3.

All (57) close contacts within the same asymmetric unit are listed below, sorted by their clash magnitude.

Atom-1	Atom-2	Interatomic distance (Å)	Clash overlap (Å)
1:A:291:GLN:NE2	1:A:369:GLN:HE21	1.85	0.75
1:A:291:GLN:NE2	1:A:369:GLN:NE2	2.35	0.74
1:A:291:GLN:HE22	1:A:369:GLN:NE2	1.89	0.70
1:A:161:LEU:HD11	1:A:269:LEU:HD22	1.73	0.69
1:B:286:TRP:CH2	5:B:962:CHT:H83	2.32	0.64
1:B:497:SER:CB	1:B:498:PRO:C	2.69	0.61
1:A:291:GLN:HE22	1:A:369:GLN:HE21	1.48	0.58
1:B:490:ASN:O	6:B:1124:HOH:O	2.17	0.58
1:B:161:LEU:HD11	1:B:269:LEU:HD22	1.86	0.57
1:B:316:ILE:O	1:B:421:GLN:NE2	2.37	0.56
1:B:197:VAL:H	1:B:223:HIS:HD2	1.55	0.55
1:B:328:VAL:O	1:B:427:ALA:HA	2.06	0.55
1:A:496:LYS:HA	1:A:497:SER:C	2.27	0.55
1:B:497:SER:HB2	1:B:498:PRO:C	2.28	0.54
1:A:13:ARG:NH2	6:A:984:HOH:O	2.42	0.52
1:B:113:PRO:HG2	1:B:485:ARG:HG2	1.92	0.50
1:A:197:VAL:H	1:A:223:HIS:HD2	1.58	0.50
1:B:326:VAL:HG12	1:B:328:VAL:HG13	1.94	0.50
1:B:286:TRP:CH2	5:B:962:CHT:C8	2.94	0.50
1:B:541:SER:O	1:B:542:ALA:HB2	2.12	0.50
1:B:497:SER:HB3	1:B:498:PRO:C	2.32	0.50
1:A:197:VAL:H	1:A:223:HIS:CD2	2.30	0.49
1:B:112:THR:HG21	1:B:143:GLY:O	2.13	0.48
1:B:211:MET:HG2	1:B:308:LEU:HD21	1.96	0.48
1:B:320:ASP:OD1	1:B:322:GLN:HG3	2.14	0.48
1:A:316:ILE:O	1:A:421:GLN:NE2	2.36	0.48
1:B:4:GLU:OE1	1:B:18:ARG:HD3	2.14	0.47
1:A:113:PRO:HG2	1:A:485:ARG:HG2	1.96	0.47
1:B:265:ASN:ND2	6:B:1308:HOH:O	2.48	0.46
1:B:286:TRP:CZ3	5:B:962:CHT:H81	2.51	0.46

Continued on next page...

Continued from previous page...

Atom-1	Atom-2	Interatomic distance (Å)	Clash overlap (Å)
1:B:339:LEU:HD13	1:B:346:PHE:CE2	2.51	0.46
1:B:197:VAL:H	1:B:223:HIS:CD2	2.33	0.45
1:A:326:VAL:HG12	1:A:328:VAL:HG13	1.99	0.45
1:A:339:LEU:HD13	1:A:346:PHE:CE2	2.52	0.44
1:A:286:TRP:CH2	5:A:952:CHT:H62	2.52	0.44
1:B:458:PRO:HA	1:B:465:TYR:CD2	2.53	0.44
1:B:495:SER:O	1:B:496:LYS:O	2.36	0.44
1:A:328:VAL:O	1:A:427:ALA:HA	2.18	0.44
1:B:495:SER:OG	1:B:496:LYS:N	2.50	0.44
1:A:453:PHE:HB3	1:A:476:LEU:HD12	1.99	0.43
1:A:496:LYS:N	1:A:497:SER:O	2.51	0.43
1:A:161:LEU:HD12	1:A:270:ILE:CG1	2.49	0.43
1:A:496:LYS:CA	1:A:497:SER:C	2.87	0.42
1:B:24:ALA:HB3	1:B:140:GLN:HG3	2.02	0.42
1:A:211:MET:HG3	1:A:232:PRO:HB3	2.01	0.42
1:A:340:VAL:HG11	1:A:443:MET:CE	2.50	0.42
1:B:497:SER:HB2	1:B:498:PRO:CA	2.49	0.42
1:A:458:PRO:HA	1:A:465:TYR:CD2	2.55	0.41
1:A:45:ARG:HD3	1:A:51:GLU:OE1	2.19	0.41
1:A:206:ALA:HB3	1:A:230:GLY:HA3	2.03	0.41
1:A:376:GLU:O	1:A:380:LEU:HG	2.21	0.41
1:A:459:LEU:HD22	1:A:470:ARG:HG2	2.02	0.41
1:B:224:ARG:HG2	1:B:325:GLN:HB2	2.01	0.41
1:B:497:SER:HB2	1:B:499:GLN:N	2.36	0.40
1:B:457:LEU:N	1:B:458:PRO:CD	2.84	0.40
1:B:161:LEU:CD1	1:B:269:LEU:HD22	2.49	0.40
1:A:327:LEU:HD11	1:A:500:TRP:CH2	2.57	0.40

There are no symmetry-related clashes.

5.3 Torsion angles [i](#)

5.3.1 Protein backbone [i](#)

In the following table, the Percentiles column shows the percent Ramachandran outliers of the chain as a percentile score with respect to all X-ray entries followed by that with respect to entries of similar resolution.

The Analysed column shows the number of residues for which the backbone conformation was analysed, and the total number of residues.

Mol	Chain	Analysed	Favoured	Allowed	Outliers	Percentiles	
1	A	534/543 (98%)	516 (97%)	17 (3%)	1 (0%)	47	55
1	B	532/543 (98%)	515 (97%)	14 (3%)	3 (1%)	25	25
All	All	1066/1086 (98%)	1031 (97%)	31 (3%)	4 (0%)	34	37

All (4) Ramachandran outliers are listed below:

Mol	Chain	Res	Type
1	B	496	LYS
1	B	497	SER
1	B	542	ALA
1	A	497	SER

5.3.2 Protein sidechains [i](#)

In the following table, the Percentiles column shows the percent sidechain outliers of the chain as a percentile score with respect to all X-ray entries followed by that with respect to entries of similar resolution.

The Analysed column shows the number of residues for which the sidechain conformation was analysed, and the total number of residues.

Mol	Chain	Analysed	Rotameric	Outliers	Percentiles	
1	A	441/443 (100%)	431 (98%)	10 (2%)	50	59
1	B	441/443 (100%)	432 (98%)	9 (2%)	55	64
All	All	882/886 (100%)	863 (98%)	19 (2%)	52	61

All (19) residues with a non-rotameric sidechain are listed below:

Mol	Chain	Res	Type
1	A	3	ARG
1	A	13	ARG
1	A	200	PHE
1	A	291	GLN
1	A	295	PHE
1	A	322	GLN
1	A	323	ASP
1	A	459	LEU
1	A	497	SER
1	A	525	ARG
1	B	107	ARG
1	B	132	VAL

Continued on next page...

Continued from previous page...

Mol	Chain	Res	Type
1	B	200	PHE
1	B	246	ARG
1	B	281	LEU
1	B	291	GLN
1	B	295	PHE
1	B	421	GLN
1	B	424	ARG

Sometimes sidechains can be flipped to improve hydrogen bonding and reduce clashes. All (7) such sidechains are listed below:

Mol	Chain	Res	Type
1	A	223	HIS
1	A	287	HIS
1	A	291	GLN
1	A	322	GLN
1	A	509	GLN
1	B	223	HIS
1	B	291	GLN

5.3.3 RNA [i](#)

There are no RNA molecules in this entry.

5.4 Non-standard residues in protein, DNA, RNA chains [i](#)

There are no non-standard protein/DNA/RNA residues in this entry.

5.5 Carbohydrates [i](#)

2 monosaccharides are modelled in this entry.

In the following table, the Counts columns list the number of bonds (or angles) for which Mogul statistics could be retrieved, the number of bonds (or angles) that are observed in the model and the number of bonds (or angles) that are defined in the Chemical Component Dictionary. The Link column lists molecule types, if any, to which the group is linked. The Z score for a bond length (or angle) is the number of standard deviations the observed value is removed from the expected value. A bond length (or angle) with $|Z| > 2$ is considered an outlier worth inspection. RMSZ is the root-mean-square of all Z scores of the bond lengths (or angles).

Mol	Type	Chain	Res	Link	Bond lengths			Bond angles		
					Counts	RMSZ	# Z > 2	Counts	RMSZ	# Z > 2
2	NAG	C	1	2,1	14,14,15	0.61	0	17,19,21	1.34	1 (5%)
2	FUC	C	2	2	10,10,11	0.73	0	14,14,16	1.74	4 (28%)

In the following table, the Chirals column lists the number of chiral outliers, the number of chiral centers analysed, the number of these observed in the model and the number defined in the Chemical Component Dictionary. Similar counts are reported in the Torsion and Rings columns. '-' means no outliers of that kind were identified.

Mol	Type	Chain	Res	Link	Chirals	Torsions	Rings
2	NAG	C	1	2,1	-	2/6/23/26	0/1/1/1
2	FUC	C	2	2	-	-	0/1/1/1

There are no bond length outliers.

All (5) bond angle outliers are listed below:

Mol	Chain	Res	Type	Atoms	Z	Observed(°)	Ideal(°)
2	C	1	NAG	C1-O5-C5	4.16	117.83	112.19
2	C	2	FUC	C3-C4-C5	4.06	116.10	109.77
2	C	2	FUC	C2-C3-C4	2.88	115.87	110.89
2	C	2	FUC	C1-C2-C3	2.51	112.75	109.67
2	C	2	FUC	O5-C1-C2	-2.11	107.52	110.77

There are no chirality outliers.

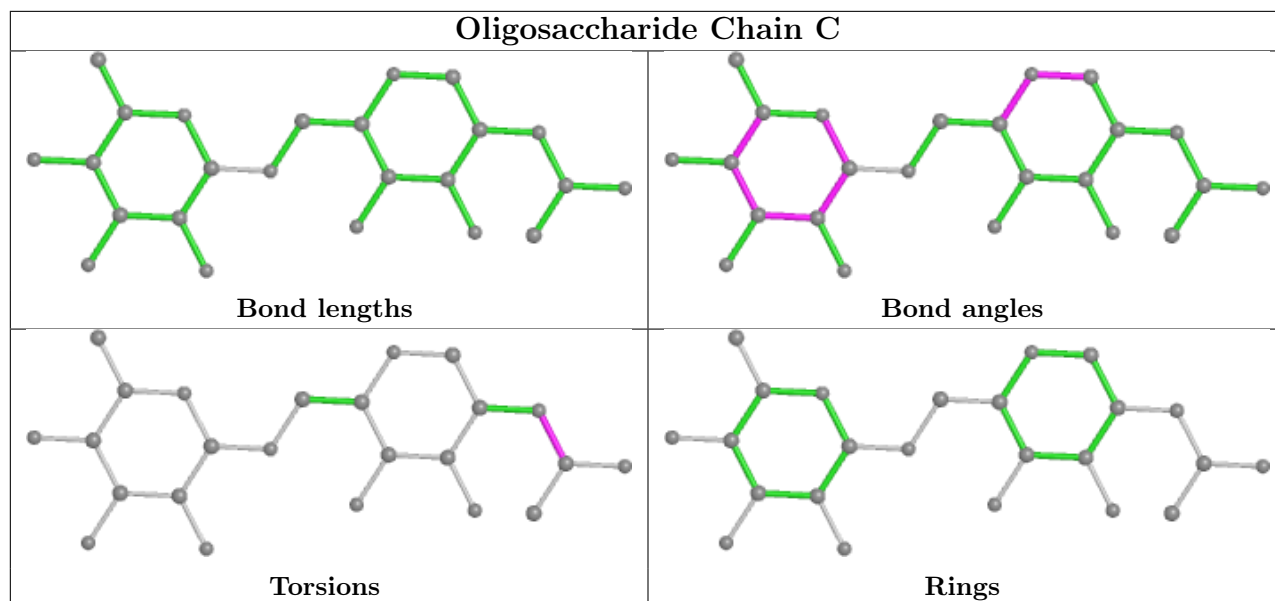
All (2) torsion outliers are listed below:

Mol	Chain	Res	Type	Atoms
2	C	1	NAG	C8-C7-N2-C2
2	C	1	NAG	O7-C7-N2-C2

There are no ring outliers.

No monomer is involved in short contacts.

The following is a two-dimensional graphical depiction of Mogul quality analysis of bond lengths, bond angles, torsion angles, and ring geometry for oligosaccharide.



5.6 Ligand geometry [i](#)

7 ligands are modelled in this entry.

In the following table, the Counts columns list the number of bonds (or angles) for which Mogul statistics could be retrieved, the number of bonds (or angles) that are observed in the model and the number of bonds (or angles) that are defined in the Chemical Component Dictionary. The Link column lists molecule types, if any, to which the group is linked. The Z score for a bond length (or angle) is the number of standard deviations the observed value is removed from the expected value. A bond length (or angle) with $|Z| > 2$ is considered an outlier worth inspection. RMSZ is the root-mean-square of all Z scores of the bond lengths (or angles).

Mol	Type	Chain	Res	Link	Bond lengths			Bond angles		
					Counts	RMSZ	# Z > 2	Counts	RMSZ	# Z > 2
4	P6G	A	901	-	18,18,18	2.20	6 (33%)	17,17,17	1.33	2 (11%)
5	CHT	B	961	-	6,6,6	0.86	0	8,8,8	0.36	0
3	NAG	A	701	1	14,14,15	0.47	0	17,19,21	1.56	3 (17%)
5	CHT	B	962	-	6,6,6	0.76	0	8,8,8	0.28	0
5	CHT	A	951	-	6,6,6	0.92	0	8,8,8	0.40	0
3	NAG	B	601	1	14,14,15	0.81	1 (7%)	17,19,21	1.41	3 (17%)
5	CHT	A	952	-	6,6,6	0.82	0	8,8,8	0.30	0

In the following table, the Chirals column lists the number of chiral outliers, the number of chiral centers analysed, the number of these observed in the model and the number defined in the Chemical Component Dictionary. Similar counts are reported in the Torsion and Rings columns. '-' means no outliers of that kind were identified.

Mol	Type	Chain	Res	Link	Chirals	Torsions	Rings
4	P6G	A	901	-	-	5/16/16/16	-
5	CHT	B	961	-	-	0/4/4/4	-
3	NAG	A	701	1	-	2/6/23/26	0/1/1/1
5	CHT	B	962	-	-	4/4/4/4	-
5	CHT	A	951	-	-	3/4/4/4	-
3	NAG	B	601	1	1/1/5/7	5/6/23/26	0/1/1/1
5	CHT	A	952	-	-	1/4/4/4	-

All (7) bond length outliers are listed below:

Mol	Chain	Res	Type	Atoms	Z	Observed(Å)	Ideal(Å)
4	A	901	P6G	O10-C9	4.42	1.61	1.42
4	A	901	P6G	O13-C12	3.81	1.58	1.42
4	A	901	P6G	O16-C15	3.61	1.57	1.42
4	A	901	P6G	O4-C3	3.51	1.57	1.42
4	A	901	P6G	O19-C18	3.44	1.59	1.42
4	A	901	P6G	O7-C6	2.66	1.53	1.42
3	B	601	NAG	C1-C2	2.28	1.55	1.52

All (8) bond angle outliers are listed below:

Mol	Chain	Res	Type	Atoms	Z	Observed(°)	Ideal(°)
3	A	701	NAG	C1-O5-C5	4.50	118.29	112.19
4	A	901	P6G	O1-C2-C3	3.30	130.94	111.81
3	B	601	NAG	C2-N2-C7	2.98	127.14	122.90
3	B	601	NAG	C1-C2-N2	2.53	114.81	110.49
3	A	701	NAG	O5-C1-C2	2.35	114.99	111.29
4	A	901	P6G	O13-C12-C11	2.17	120.19	110.39
3	A	701	NAG	C4-C3-C2	-2.14	107.89	111.02
3	B	601	NAG	O5-C5-C6	2.11	110.51	107.20

All (1) chirality outliers are listed below:

Mol	Chain	Res	Type	Atom
3	B	601	NAG	C1

All (20) torsion outliers are listed below:

Mol	Chain	Res	Type	Atoms
3	B	601	NAG	C8-C7-N2-C2
3	B	601	NAG	O7-C7-N2-C2

Continued on next page...

Continued from previous page...

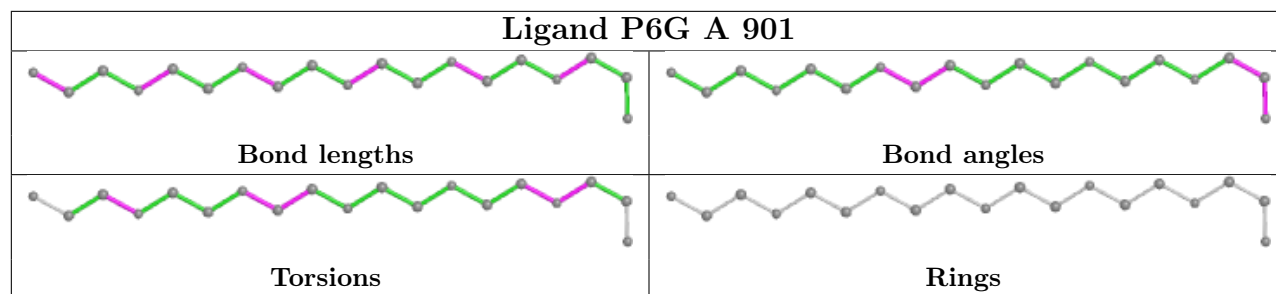
Mol	Chain	Res	Type	Atoms
5	B	962	CHT	O6-C4-C5-N1
3	B	601	NAG	O5-C5-C6-O6
3	B	601	NAG	C4-C5-C6-O6
5	B	962	CHT	C4-C5-N1-C6
5	B	962	CHT	C4-C5-N1-C8
3	A	701	NAG	C8-C7-N2-C2
5	B	962	CHT	C4-C5-N1-C7
3	A	701	NAG	O7-C7-N2-C2
3	B	601	NAG	C3-C2-N2-C7
4	A	901	P6G	C6-C5-O4-C3
4	A	901	P6G	C11-C12-O13-C14
4	A	901	P6G	O10-C11-C12-O13
4	A	901	P6G	C2-C3-O4-C5
5	A	951	CHT	C4-C5-N1-C8
4	A	901	P6G	C18-C17-O16-C15
5	A	951	CHT	C4-C5-N1-C6
5	A	952	CHT	O6-C4-C5-N1
5	A	951	CHT	C4-C5-N1-C7

There are no ring outliers.

2 monomers are involved in 4 short contacts:

Mol	Chain	Res	Type	Clashes	Symm-Clashes
5	B	962	CHT	3	0
5	A	952	CHT	1	0

The following is a two-dimensional graphical depiction of Mogul quality analysis of bond lengths, bond angles, torsion angles, and ring geometry for all instances of the Ligand of Interest. In addition, ligands with molecular weight > 250 and outliers as shown on the validation Tables will also be included. For torsion angles, if less than 5% of the Mogul distribution of torsion angles is within 10 degrees of the torsion angle in question, then that torsion angle is considered an outlier. Any bond that is central to one or more torsion angles identified as an outlier by Mogul will be highlighted in the graph. For rings, the root-mean-square deviation (RMSD) between the ring in question and similar rings identified by Mogul is calculated over all ring torsion angles. If the average RMSD is greater than 60 degrees and the minimal RMSD between the ring in question and any Mogul-identified rings is also greater than 60 degrees, then that ring is considered an outlier. The outliers are highlighted in purple. The color gray indicates Mogul did not find sufficient equivalents in the CSD to analyse the geometry.



5.7 Other polymers [i](#)

There are no such residues in this entry.

5.8 Polymer linkage issues [i](#)

There are no chain breaks in this entry.

6 Fit of model and data

6.1 Protein, DNA and RNA chains

In the following table, the column labelled ‘#RSRZ > 2’ contains the number (and percentage) of RSRZ outliers, followed by percent RSRZ outliers for the chain as percentile scores relative to all X-ray entries and entries of similar resolution. The OWAB column contains the minimum, median, 95th percentile and maximum values of the occupancy-weighted average B-factor per residue. The column labelled ‘Q < 0.9’ lists the number of (and percentage) of residues with an average occupancy less than 0.9.

Mol	Chain	Analysed	<RSRZ>	#RSRZ>2	OWAB(Å ²)	Q<0.9
1	A	538/543 (99%)	-0.17	14 (2%) 56 59	38, 49, 71, 95	0
1	B	534/543 (98%)	-0.12	15 (2%) 53 55	41, 54, 73, 91	0
All	All	1072/1086 (98%)	-0.15	29 (2%) 54 57	38, 52, 72, 95	0

All (29) RSRZ outliers are listed below:

Mol	Chain	Res	Type	RSRZ
1	A	496	LYS	6.9
1	A	495	SER	5.5
1	A	493	ARG	5.0
1	A	542	ALA	4.7
1	B	541	SER	4.6
1	A	541	SER	4.4
1	B	543	THR	4.4
1	B	495	SER	4.3
1	B	258	PRO	4.1
1	B	542	ALA	4.0
1	A	494	ASP	3.4
1	B	493	ARG	3.4
1	B	492	PRO	3.3
1	A	259	PRO	3.0
1	B	109	ALA	2.9
1	B	497	SER	2.8
1	B	41	PRO	2.7
1	B	265	ASN	2.7
1	B	323	ASP	2.7
1	A	165	ARG	2.6
1	A	323	ASP	2.5
1	B	42	VAL	2.4
1	A	75	THR	2.4
1	A	492	PRO	2.3

Continued on next page...

Continued from previous page...

Mol	Chain	Res	Type	RSRZ
1	A	543	THR	2.2
1	A	497	SER	2.1
1	B	461	PRO	2.1
1	B	455	PHE	2.1
1	A	265	ASN	2.0

6.2 Non-standard residues in protein, DNA, RNA chains [i](#)

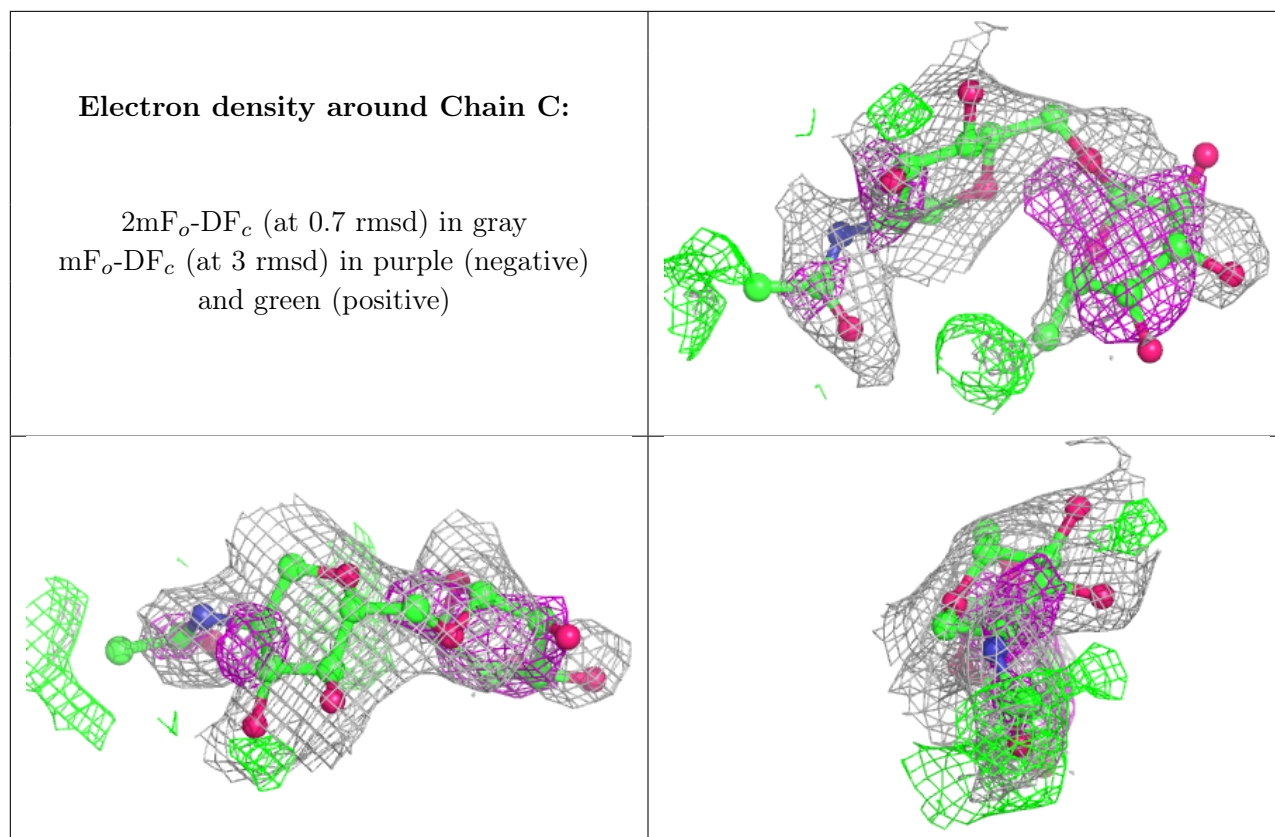
There are no non-standard protein/DNA/RNA residues in this entry.

6.3 Carbohydrates [i](#)

In the following table, the Atoms column lists the number of modelled atoms in the group and the number defined in the chemical component dictionary. The B-factors column lists the minimum, median, 95th percentile and maximum values of B factors of atoms in the group. The column labelled 'Q< 0.9' lists the number of atoms with occupancy less than 0.9.

Mol	Type	Chain	Res	Atoms	RSCC	RSR	B-factors(Å ²)	Q<0.9
2	FUC	C	2	10/11	0.55	0.57	95,97,98,98	0
2	NAG	C	1	14/15	0.79	0.33	78,84,87,92	0

The following is a graphical depiction of the model fit to experimental electron density for oligosaccharide. Each fit is shown from different orientation to approximate a three-dimensional view.

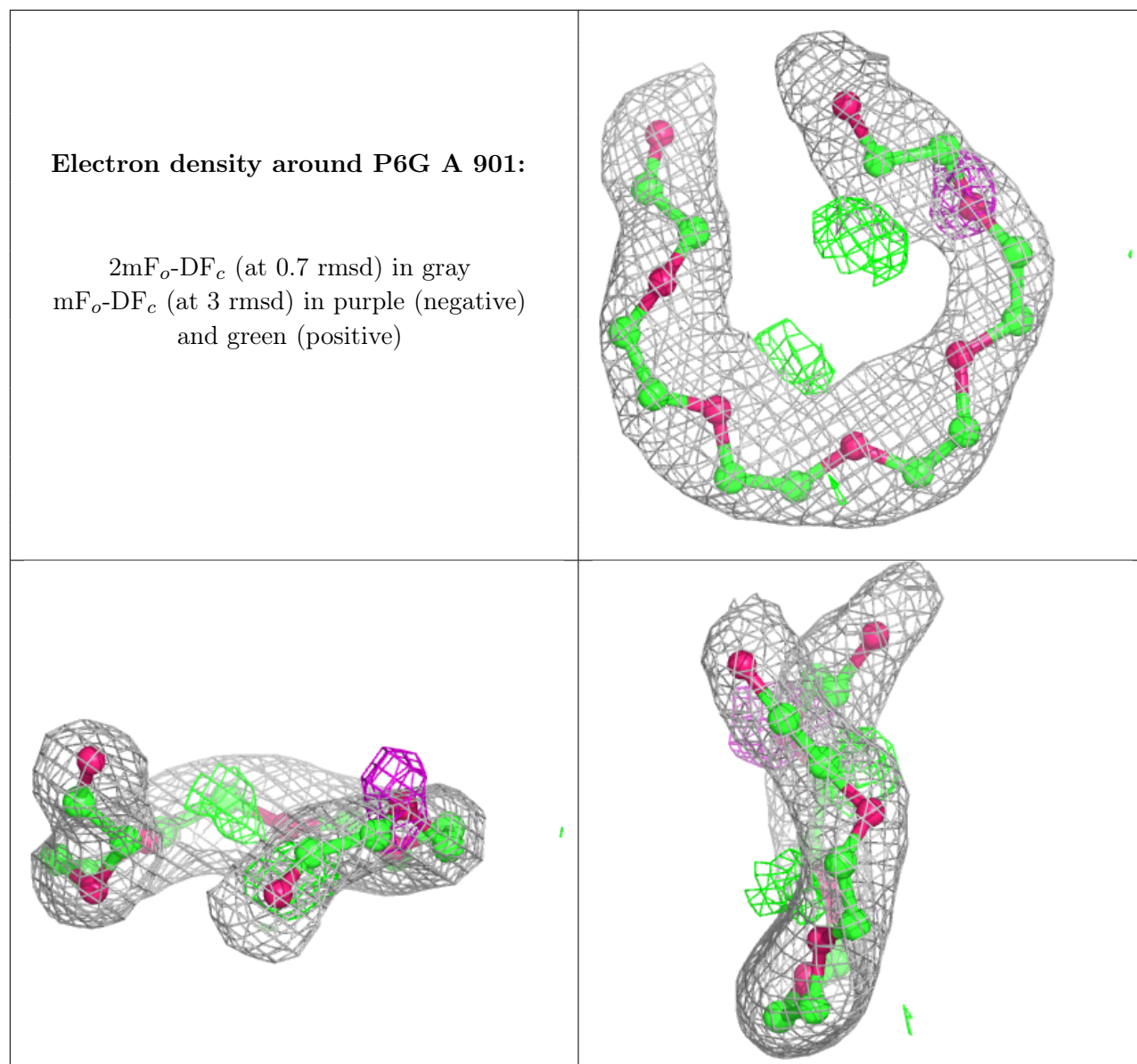


6.4 Ligands [i](#)

In the following table, the Atoms column lists the number of modelled atoms in the group and the number defined in the chemical component dictionary. The B-factors column lists the minimum, median, 95th percentile and maximum values of B factors of atoms in the group. The column labelled 'Q< 0.9' lists the number of atoms with occupancy less than 0.9.

Mol	Type	Chain	Res	Atoms	RSCC	RSR	B-factors(Å ²)	Q<0.9
3	NAG	A	701	14/15	0.71	0.41	82,86,88,88	0
3	NAG	B	601	14/15	0.73	0.37	83,88,89,90	0
5	CHT	B	962	7/7	0.80	0.39	87,88,88,88	7
5	CHT	A	952	7/7	0.85	0.33	86,86,86,86	7
4	P6G	A	901	19/19	0.89	0.17	60,66,70,71	0
5	CHT	A	951	7/7	0.90	0.33	76,78,80,81	0
5	CHT	B	961	7/7	0.94	0.28	82,83,84,85	0

The following is a graphical depiction of the model fit to experimental electron density of all instances of the Ligand of Interest. In addition, ligands with molecular weight > 250 and outliers as shown on the geometry validation Tables will also be included. Each fit is shown from different orientation to approximate a three-dimensional view.



6.5 Other polymers [i](#)

There are no such residues in this entry.