



# Full wwPDB X-ray Structure Validation Report ⓘ

Sep 10, 2023 – 01:20 AM EDT

PDB ID : 4H6D  
Title : Crystal structure of PLP-soaked HMP synthase Thi5 from *S. cerevisiae*  
Authors : Coquille, S.C.; Roux, C.; Fitzpatrick, T.; Thore, S.  
Deposited on : 2012-09-19  
Resolution : 2.90 Å(reported)

This is a Full wwPDB X-ray Structure Validation Report for a publicly released PDB entry.

We welcome your comments at [validation@mail.wwpdb.org](mailto:validation@mail.wwpdb.org)

A user guide is available at

<https://www.wwpdb.org/validation/2017/XrayValidationReportHelp>

with specific help available everywhere you see the ⓘ symbol.

The types of validation reports are described at

<http://www.wwpdb.org/validation/2017/FAQs#types>.

---

The following versions of software and data (see [references ⓘ](#)) were used in the production of this report:

MolProbity : 4.02b-467  
Mogul : 1.8.5 (274361), CSD as541be (2020)  
Xtrriage (Phenix) : 1.13  
EDS : 2.35.1  
Percentile statistics : 20191225.v01 (using entries in the PDB archive December 25th 2019)  
Refmac : 5.8.0158  
CCP4 : 7.0.044 (Gargrove)  
Ideal geometry (proteins) : Engh & Huber (2001)  
Ideal geometry (DNA, RNA) : Parkinson et al. (1996)  
Validation Pipeline (wwPDB-VP) : 2.35.1

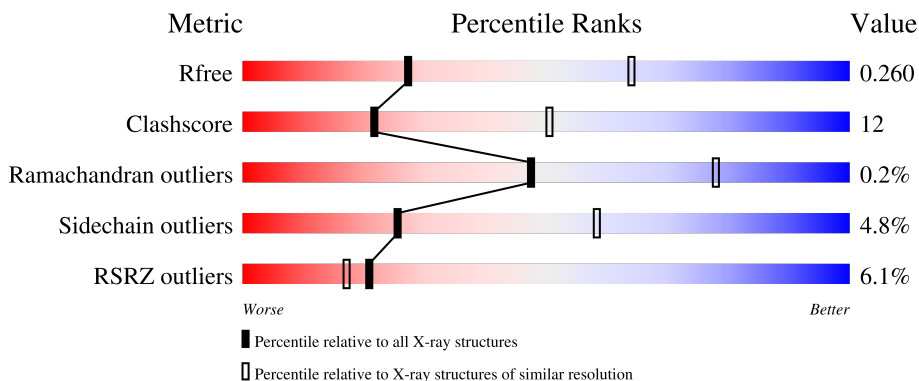
# 1 Overall quality at a glance

The following experimental techniques were used to determine the structure:

*X-RAY DIFFRACTION*

The reported resolution of this entry is 2.90 Å.

Percentile scores (ranging between 0-100) for global validation metrics of the entry are shown in the following graphic. The table shows the number of entries on which the scores are based.



Metric	Whole archive (#Entries)	Similar resolution (#Entries, resolution range(Å))
$R_{free}$	130704	1957 (2.90-2.90)
Clashscore	141614	2172 (2.90-2.90)
Ramachandran outliers	138981	2115 (2.90-2.90)
Sidechain outliers	138945	2117 (2.90-2.90)
RSRZ outliers	127900	1906 (2.90-2.90)

The table below summarises the geometric issues observed across the polymeric chains and their fit to the electron density. The red, orange, yellow and green segments of the lower bar indicate the fraction of residues that contain outliers for  $\geq 3$ , 2, 1 and 0 types of geometric quality criteria respectively. A grey segment represents the fraction of residues that are not modelled. The numeric value for each fraction is indicated below the corresponding segment, with a dot representing fractions  $\leq 5\%$ . The upper red bar (where present) indicates the fraction of residues that have poor fit to the electron density. The numeric value is given above the bar.

Mol	Chain	Length	Quality of chain
1	A	346	
1	B	346	
1	C	346	
1	D	346	
1	E	346	

*Continued on next page...*

*Continued from previous page...*

Mol	Chain	Length	Quality of chain
1	F	346	<p>2% 73% 21% • 5%</p>
1	G	346	<p>4% 70% 24% • •</p>
1	H	346	<p>13% 69% 24% • 5%</p>

The following table lists non-polymeric compounds, carbohydrate monomers and non-standard residues in protein, DNA, RNA chains that are outliers for geometric or electron-density-fit criteria:

Mol	Type	Chain	Res	Chirality	Geometry	Clashes	Electron density
2	PLP	A	400	-	-	X	-
2	PLP	E	400	-	-	X	-

## 2 Entry composition

There are 2 unique types of molecules in this entry. The entry contains 20876 atoms, of which 0 are hydrogens and 0 are deuteriums.

In the tables below, the ZeroOcc column contains the number of atoms modelled with zero occupancy, the AltConf column contains the number of residues with at least one atom in alternate conformation and the Trace column contains the number of residues modelled with at most 2 atoms.

- Molecule 1 is a protein called Pyrimidine precursor biosynthesis enzyme THI5.

Mol	Chain	Residues	Atoms					ZeroOcc	AltConf	Trace
			Total	C	N	O	S			
1	F	330	Total 2643	C 1706	N 435	O 485	S 17	0	0	0
1	A	314	Total 2505	C 1624	N 407	O 458	S 16	0	0	0
1	B	329	Total 2634	C 1700	N 433	O 484	S 17	0	0	0
1	C	335	Total 2674	C 1726	N 440	O 490	S 18	0	0	0
1	D	333	Total 2662	C 1718	N 438	O 488	S 18	0	0	0
1	E	302	Total 2417	C 1566	N 392	O 444	S 15	0	0	0
1	G	331	Total 2651	C 1712	N 436	O 486	S 17	0	0	0
1	H	328	Total 2630	C 1697	N 433	O 483	S 17	0	0	0

There are 72 discrepancies between the modelled and reference sequences:

Chain	Residue	Modelled	Actual	Comment	Reference
F	101	LYS	GLU	engineered mutation	UNP P43534
F	102	SER	ASP	engineered mutation	UNP P43534
F	317	THR	GLN	engineered mutation	UNP P43534
F	341	HIS	-	expression tag	UNP P43534
F	342	HIS	-	expression tag	UNP P43534
F	343	HIS	-	expression tag	UNP P43534
F	344	HIS	-	expression tag	UNP P43534
F	345	HIS	-	expression tag	UNP P43534
F	346	HIS	-	expression tag	UNP P43534
A	101	LYS	GLU	engineered mutation	UNP P43534
A	102	SER	ASP	engineered mutation	UNP P43534
A	317	THR	GLN	engineered mutation	UNP P43534
A	341	HIS	-	expression tag	UNP P43534

*Continued on next page...*

*Continued from previous page...*

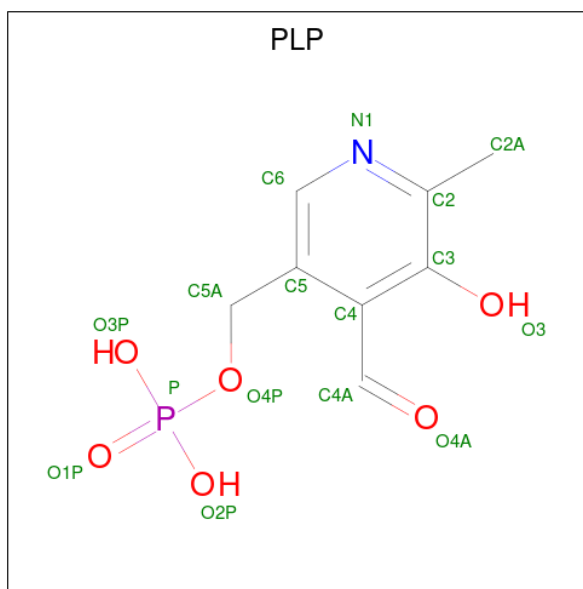
Chain	Residue	Modelled	Actual	Comment	Reference
A	342	HIS	-	expression tag	UNP P43534
A	343	HIS	-	expression tag	UNP P43534
A	344	HIS	-	expression tag	UNP P43534
A	345	HIS	-	expression tag	UNP P43534
A	346	HIS	-	expression tag	UNP P43534
B	101	LYS	GLU	engineered mutation	UNP P43534
B	102	SER	ASP	engineered mutation	UNP P43534
B	317	THR	GLN	engineered mutation	UNP P43534
B	341	HIS	-	expression tag	UNP P43534
B	342	HIS	-	expression tag	UNP P43534
B	343	HIS	-	expression tag	UNP P43534
B	344	HIS	-	expression tag	UNP P43534
B	345	HIS	-	expression tag	UNP P43534
B	346	HIS	-	expression tag	UNP P43534
C	101	LYS	GLU	engineered mutation	UNP P43534
C	102	SER	ASP	engineered mutation	UNP P43534
C	317	THR	GLN	engineered mutation	UNP P43534
C	341	HIS	-	expression tag	UNP P43534
C	342	HIS	-	expression tag	UNP P43534
C	343	HIS	-	expression tag	UNP P43534
C	344	HIS	-	expression tag	UNP P43534
C	345	HIS	-	expression tag	UNP P43534
C	346	HIS	-	expression tag	UNP P43534
D	101	LYS	GLU	engineered mutation	UNP P43534
D	102	SER	ASP	engineered mutation	UNP P43534
D	317	THR	GLN	engineered mutation	UNP P43534
D	341	HIS	-	expression tag	UNP P43534
D	342	HIS	-	expression tag	UNP P43534
D	343	HIS	-	expression tag	UNP P43534
D	344	HIS	-	expression tag	UNP P43534
D	345	HIS	-	expression tag	UNP P43534
D	346	HIS	-	expression tag	UNP P43534
E	101	LYS	GLU	engineered mutation	UNP P43534
E	102	SER	ASP	engineered mutation	UNP P43534
E	317	THR	GLN	engineered mutation	UNP P43534
E	341	HIS	-	expression tag	UNP P43534
E	342	HIS	-	expression tag	UNP P43534
E	343	HIS	-	expression tag	UNP P43534
E	344	HIS	-	expression tag	UNP P43534
E	345	HIS	-	expression tag	UNP P43534
E	346	HIS	-	expression tag	UNP P43534
G	101	LYS	GLU	engineered mutation	UNP P43534

*Continued on next page...*

Continued from previous page...

Chain	Residue	Modelled	Actual	Comment	Reference
G	102	SER	ASP	engineered mutation	UNP P43534
G	317	THR	GLN	engineered mutation	UNP P43534
G	341	HIS	-	expression tag	UNP P43534
G	342	HIS	-	expression tag	UNP P43534
G	343	HIS	-	expression tag	UNP P43534
G	344	HIS	-	expression tag	UNP P43534
G	345	HIS	-	expression tag	UNP P43534
G	346	HIS	-	expression tag	UNP P43534
H	101	LYS	GLU	engineered mutation	UNP P43534
H	102	SER	ASP	engineered mutation	UNP P43534
H	317	THR	GLN	engineered mutation	UNP P43534
H	341	HIS	-	expression tag	UNP P43534
H	342	HIS	-	expression tag	UNP P43534
H	343	HIS	-	expression tag	UNP P43534
H	344	HIS	-	expression tag	UNP P43534
H	345	HIS	-	expression tag	UNP P43534
H	346	HIS	-	expression tag	UNP P43534

- Molecule 2 is PYRIDOXAL-5'-PHOSPHATE (three-letter code: PLP) (formula: C<sub>8</sub>H<sub>10</sub>NO<sub>6</sub>P).



Mol	Chain	Residues	Atoms					ZeroOcc	AltConf
2	A	1	Total	C	N	O	P	0	0
			15	8	1	5	1		
2	B	1	Total	C	N	O	P	0	0
			15	8	1	5	1		
2	E	1	Total	C	N	O	P	0	0
			15	8	1	5	1		

Continued on next page...

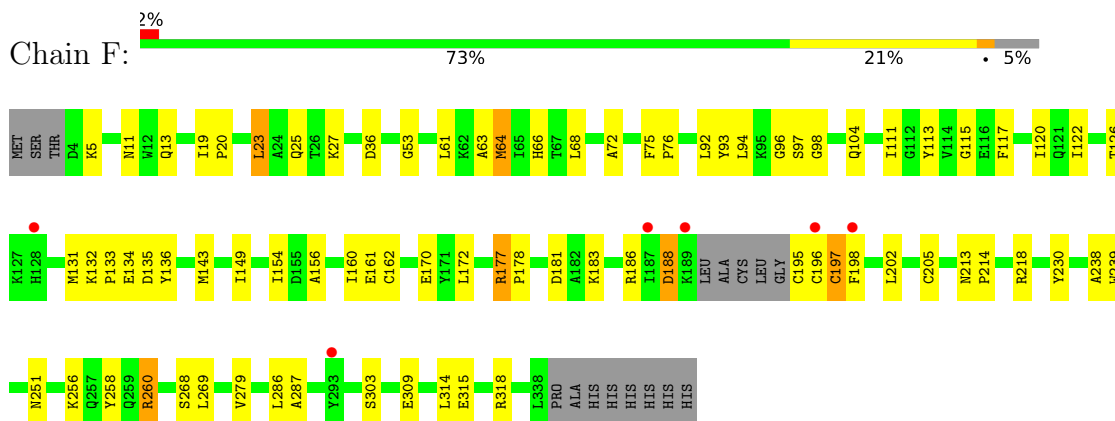
*Continued from previous page...*

Mol	Chain	Residues	Atoms					ZeroOcc	AltConf
			Total	C	N	O	P		
2	H	1	15	8	1	5	1	0	0

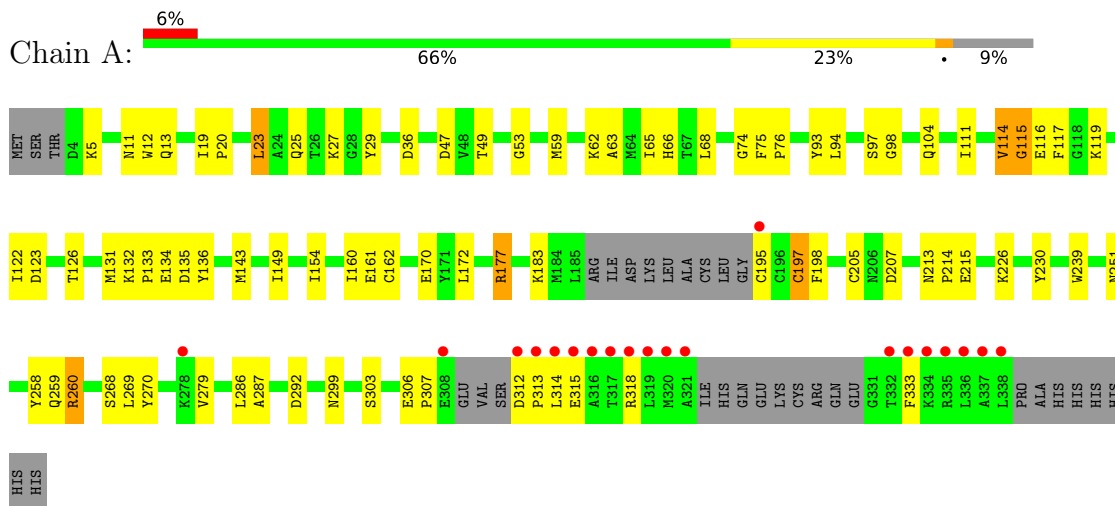
### 3 Residue-property plots [i](#)

These plots are drawn for all protein, RNA, DNA and oligosaccharide chains in the entry. The first graphic for a chain summarises the proportions of the various outlier classes displayed in the second graphic. The second graphic shows the sequence view annotated by issues in geometry and electron density. Residues are color-coded according to the number of geometric quality criteria for which they contain at least one outlier: green = 0, yellow = 1, orange = 2 and red = 3 or more. A red dot above a residue indicates a poor fit to the electron density ( $RSRZ > 2$ ). Stretches of 2 or more consecutive residues without any outlier are shown as a green connector. Residues present in the sample, but not in the model, are shown in grey.

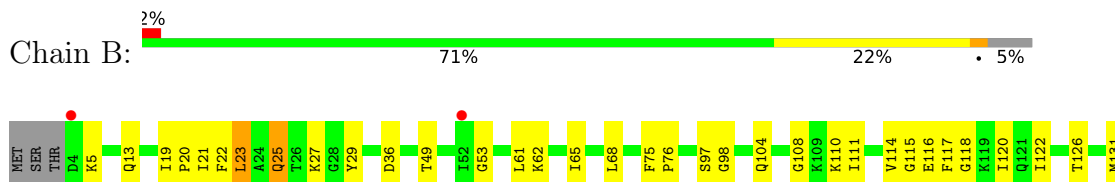
- Molecule 1: Pyrimidine precursor biosynthesis enzyme THI5



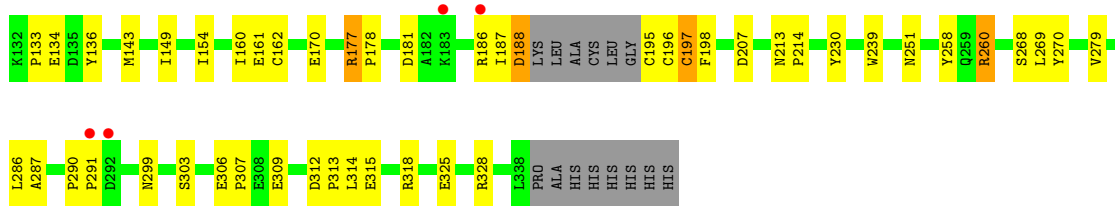
- Molecule 1: Pyrimidine precursor biosynthesis enzyme THI5



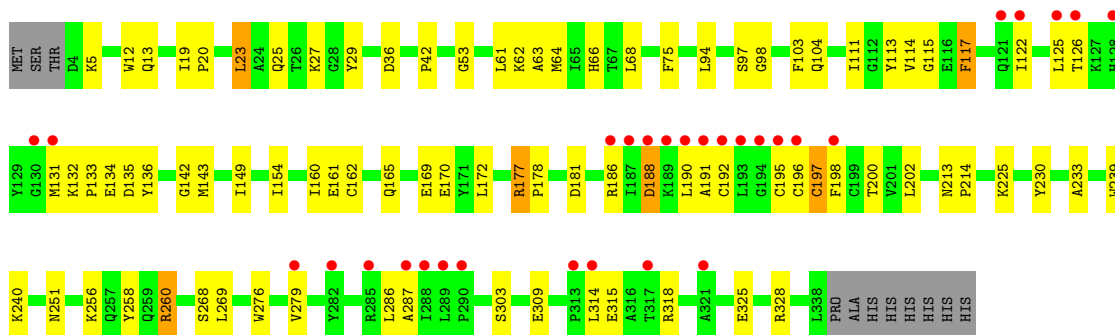
- Molecule 1: Pyrimidine precursor biosynthesis enzyme THI5



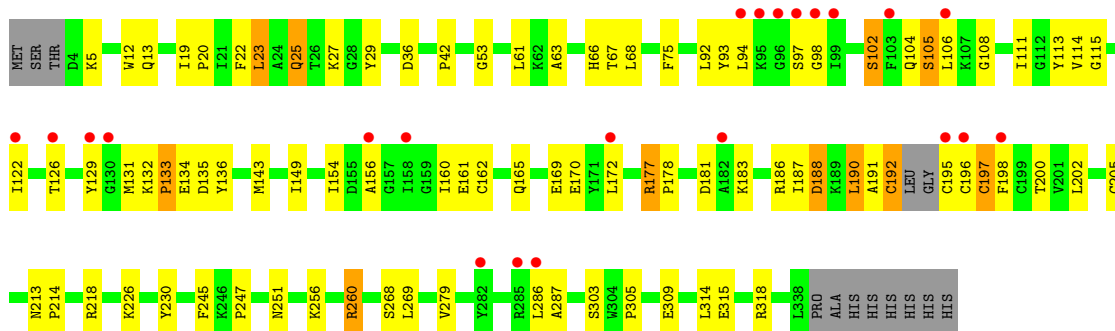




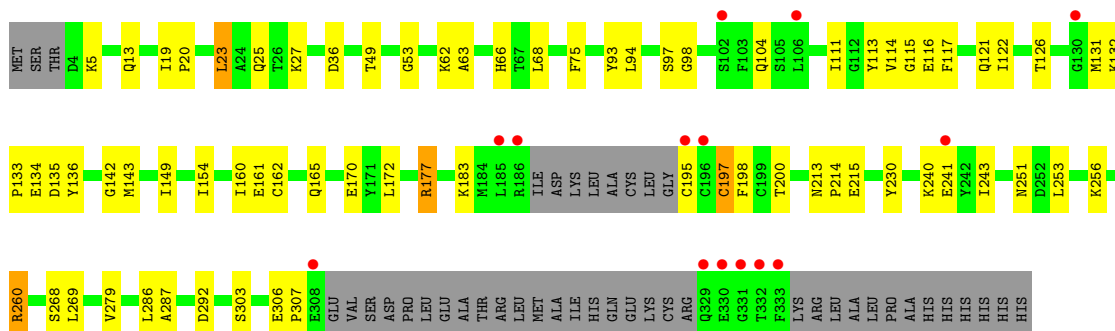
● Molecule 1: Pyrimidine precursor biosynthesis enzyme THI5



● Molecule 1: Pyrimidine precursor biosynthesis enzyme THI5



● Molecule 1: Pyrimidine precursor biosynthesis enzyme THI5





## 4 Data and refinement statistics

Property	Value	Source
Space group	P 1 21 1	Depositor
Cell constants a, b, c, $\alpha$ , $\beta$ , $\gamma$	79.48Å 191.84Å 101.89Å 90.00° 112.72° 90.00°	Depositor
Resolution (Å)	19.92 – 2.90 48.19 – 2.90	Depositor EDS
% Data completeness (in resolution range)	99.3 (19.92-2.90) 99.3 (48.19-2.90)	Depositor EDS
$R_{merge}$	0.12	Depositor
$R_{sym}$	(Not available)	Depositor
$\langle I/\sigma(I) \rangle$ <sup>1</sup>	2.72 (at 2.91Å)	Xtrriage
Refinement program	PHENIX (phenix.refine: 1.6.1_353)	Depositor
R, $R_{free}$	0.221 , 0.263 0.218 , 0.260	Depositor DCC
$R_{free}$ test set	3091 reflections (5.00%)	wwPDB-VP
Wilson B-factor (Å <sup>2</sup> )	54.0	Xtrriage
Anisotropy	0.496	Xtrriage
Bulk solvent $k_{sol}$ (e/Å <sup>3</sup> ), $B_{sol}$ (Å <sup>2</sup> )	0.30 , 44.0	EDS
L-test for twinning <sup>2</sup>	$\langle  L  \rangle = 0.48$ , $\langle L^2 \rangle = 0.31$	Xtrriage
Estimated twinning fraction	0.049 for h,-k,-h-l	Xtrriage
$F_o, F_c$ correlation	0.92	EDS
Total number of atoms	20876	wwPDB-VP
Average B, all atoms (Å <sup>2</sup> )	60.0	wwPDB-VP

Xtrriage's analysis on translational NCS is as follows: *The largest off-origin peak in the Patterson function is 17.87% of the height of the origin peak. No significant pseudotranslation is detected.*

<sup>1</sup>Intensities estimated from amplitudes.

<sup>2</sup>Theoretical values of  $\langle |L| \rangle$ ,  $\langle L^2 \rangle$  for acentric reflections are 0.5, 0.333 respectively for untwinned datasets, and 0.375, 0.2 for perfectly twinned datasets.

## 5 Model quality [i](#)

### 5.1 Standard geometry [i](#)

Bond lengths and bond angles in the following residue types are not validated in this section: PLP

The Z score for a bond length (or angle) is the number of standard deviations the observed value is removed from the expected value. A bond length (or angle) with  $|Z| > 5$  is considered an outlier worth inspection. RMSZ is the root-mean-square of all Z scores of the bond lengths (or angles).

Mol	Chain	Bond lengths		Bond angles	
		RMSZ	# Z  >5	RMSZ	# Z  >5
1	A	0.59	2/2563 (0.1%)	0.57	0/3458
1	B	0.55	0/2695	0.57	0/3637
1	C	0.49	0/2736	0.57	0/3693
1	D	0.48	1/2723 (0.0%)	0.56	0/3674
1	E	0.55	1/2475 (0.0%)	0.55	0/3340
1	F	0.53	1/2704 (0.0%)	0.55	0/3648
1	G	0.53	0/2712	0.58	1/3659 (0.0%)
1	H	0.50	0/2691	0.55	0/3630
All	All	0.53	5/21299 (0.0%)	0.56	1/28739 (0.0%)

Chiral center outliers are detected by calculating the chiral volume of a chiral center and verifying if the center is modelled as a planar moiety or with the opposite hand. A planarity outlier is detected by checking planarity of atoms in a peptide group, atoms in a mainchain group or atoms of a sidechain that are expected to be planar.

Mol	Chain	#Chirality outliers	#Planarity outliers
1	D	0	2

All (5) bond length outliers are listed below:

Mol	Chain	Res	Type	Atoms	Z	Observed(Å)	Ideal(Å)
1	D	205	CYS	CB-SG	-6.69	1.70	1.82
1	A	114	VAL	CB-CG2	-6.41	1.39	1.52
1	F	205	CYS	CB-SG	-5.33	1.73	1.81
1	A	114	VAL	CB-CG1	-5.30	1.41	1.52
1	E	113	TYR	CD2-CE2	-5.08	1.31	1.39

All (1) bond angle outliers are listed below:

Mol	Chain	Res	Type	Atoms	Z	Observed(°)	Ideal(°)
1	G	115	GLY	N-CA-C	8.68	134.79	113.10

There are no chirality outliers.

All (2) planarity outliers are listed below:

Mol	Chain	Res	Type	Group
1	D	133	PRO	Peptide,Mainchain

## 5.2 Too-close contacts [i](#)

In the following table, the Non-H and H(model) columns list the number of non-hydrogen atoms and hydrogen atoms in the chain respectively. The H(added) column lists the number of hydrogen atoms added and optimized by MolProbity. The Clashes column lists the number of clashes within the asymmetric unit, whereas Symm-Clashes lists symmetry-related clashes.

Mol	Chain	Non-H	H(model)	H(added)	Clashes	Symm-Clashes
1	A	2505	0	2525	66	0
1	B	2634	0	2652	57	0
1	C	2674	0	2703	68	0
1	D	2662	0	2688	65	1
1	E	2417	0	2422	65	1
1	F	2643	0	2667	60	2
1	G	2651	0	2678	65	0
1	H	2630	0	2649	69	0
2	A	15	0	6	11	0
2	B	15	0	6	4	0
2	E	15	0	6	6	0
2	H	15	0	6	3	0
All	All	20876	0	21008	500	2

The all-atom clashscore is defined as the number of clashes found per 1000 atoms (including hydrogen atoms). The all-atom clashscore for this structure is 12.

All (500) close contacts within the same asymmetric unit are listed below, sorted by their clash magnitude.

Atom-1	Atom-2	Interatomic distance (Å)	Clash overlap (Å)
1:C:125:LEU:HD13	1:C:190:LEU:HD11	1.37	1.02
1:H:177:ARG:HH11	1:H:177:ARG:HG2	1.25	1.02
1:A:177:ARG:HH11	1:A:177:ARG:HG2	1.22	1.00
1:E:177:ARG:HG2	1:E:177:ARG:HH11	1.25	0.99

*Continued on next page...*

*Continued from previous page...*

Atom-1	Atom-2	Interatomic distance (Å)	Clash overlap (Å)
1:F:177:ARG:HG2	1:F:177:ARG:HH11	1.28	0.98
1:C:177:ARG:HH11	1:C:177:ARG:HG2	1.30	0.96
1:D:177:ARG:HG2	1:D:177:ARG:HH11	1.33	0.94
1:B:177:ARG:HG2	1:B:177:ARG:HH11	1.32	0.94
1:D:102:SER:O	1:D:105:SER:OG	1.88	0.91
1:F:97:SER:N	1:F:98:GLY:HA2	1.86	0.90
1:G:177:ARG:HG2	1:G:177:ARG:HH11	1.35	0.89
1:G:66:HIS:CD2	1:G:117:PHE:HD2	1.91	0.87
1:E:27:LYS:HE2	1:E:241:GLU:OE1	1.71	0.87
1:C:97:SER:N	1:C:98:GLY:HA2	1.90	0.85
1:A:11:ASN:HD22	2:A:400:PLP:H2A1	1.39	0.84
1:A:97:SER:N	1:A:98:GLY:HA2	1.92	0.83
1:E:97:SER:N	1:E:98:GLY:HA2	1.92	0.83
1:B:97:SER:N	1:B:98:GLY:HA2	1.94	0.83
1:D:97:SER:N	1:D:98:GLY:HA2	1.92	0.83
1:B:188:ASP:HB2	1:B:196:CYS:HB3	1.62	0.82
1:F:113:TYR:CD1	1:F:115:GLY:O	2.33	0.81
1:F:188:ASP:HB2	1:F:196:CYS:HB3	1.61	0.81
1:D:188:ASP:HB2	1:D:196:CYS:HB3	1.61	0.81
1:E:177:ARG:HH11	1:E:177:ARG:CG	1.95	0.80
1:C:188:ASP:HB2	1:C:196:CYS:HB3	1.63	0.79
1:H:188:ASP:HB2	1:H:196:CYS:HB3	1.64	0.79
1:G:188:ASP:HB2	1:G:196:CYS:HB3	1.63	0.79
1:H:97:SER:N	1:H:98:GLY:HA2	1.97	0.79
1:A:177:ARG:HH11	1:A:177:ARG:CG	1.96	0.79
1:A:177:ARG:HG2	1:A:177:ARG:NH1	1.97	0.78
1:H:177:ARG:HH11	1:H:177:ARG:CG	1.96	0.78
1:E:27:LYS:HE2	1:E:241:GLU:CD	2.03	0.78
1:H:186:ARG:O	1:H:190:LEU:HG	1.83	0.78
1:G:66:HIS:CD2	1:G:117:PHE:CD2	2.72	0.78
1:F:177:ARG:HH11	1:F:177:ARG:CG	1.96	0.77
1:C:125:LEU:CD1	1:C:190:LEU:HD11	2.14	0.77
1:G:97:SER:N	1:G:98:GLY:HA2	2.00	0.77
1:C:240:LYS:HZ3	1:H:27:LYS:HZ3	1.30	0.77
1:E:177:ARG:HG2	1:E:177:ARG:NH1	1.99	0.76
1:C:177:ARG:HH11	1:C:177:ARG:CG	1.99	0.76
1:B:177:ARG:HH11	1:B:177:ARG:CG	1.98	0.76
1:G:177:ARG:HH11	1:G:177:ARG:CG	1.99	0.75
1:E:66:HIS:HD2	1:E:117:PHE:CD2	2.06	0.74
1:C:117:PHE:H	1:C:117:PHE:HD2	1.33	0.73
1:A:292:ASP:OD2	1:D:218:ARG:NH1	2.22	0.73

*Continued on next page...*

*Continued from previous page...*

Atom-1	Atom-2	Interatomic distance (Å)	Clash overlap (Å)
1:D:177:ARG:HH11	1:D:177:ARG:CG	2.00	0.73
1:F:111:ILE:HD12	1:F:136:TYR:CD1	2.24	0.73
1:E:116:GLU:N	2:E:400:PLP:O2P	2.21	0.72
1:C:117:PHE:N	1:C:117:PHE:CD2	2.55	0.72
1:C:113:TYR:HE1	1:C:115:GLY:O	1.72	0.71
2:E:400:PLP:H6	2:E:400:PLP:O3P	1.91	0.71
1:G:177:ARG:HG2	1:G:177:ARG:NH1	2.05	0.70
1:H:177:ARG:HG2	1:H:177:ARG:NH1	1.99	0.70
1:E:230:TYR:OH	1:E:241:GLU:OE2	2.06	0.69
1:D:177:ARG:HG2	1:D:177:ARG:NH1	2.06	0.69
1:E:230:TYR:CE2	1:E:241:GLU:OE1	2.46	0.69
1:F:113:TYR:HD1	1:F:115:GLY:O	1.73	0.69
1:E:114:VAL:HB	2:E:400:PLP:O3P	1.92	0.69
1:C:177:ARG:HG2	1:C:177:ARG:NH1	2.03	0.69
1:A:19:ILE:HG12	1:A:23:LEU:HD22	1.76	0.68
1:A:11:ASN:ND2	2:A:400:PLP:H2A1	2.09	0.68
1:D:19:ILE:HG12	1:D:23:LEU:HD22	1.75	0.68
1:E:19:ILE:HG12	1:E:23:LEU:HD22	1.76	0.68
1:B:19:ILE:HG12	1:B:23:LEU:HD22	1.76	0.68
1:F:19:ILE:HG12	1:F:23:LEU:HD22	1.76	0.67
1:D:190:LEU:HD12	1:D:191:ALA:N	2.09	0.67
1:H:19:ILE:HG12	1:H:23:LEU:HD22	1.76	0.67
1:C:240:LYS:NZ	1:H:27:LYS:NZ	2.42	0.67
1:B:177:ARG:HG2	1:B:177:ARG:NH1	2.04	0.66
1:F:177:ARG:HG2	1:F:177:ARG:NH1	2.01	0.66
1:A:114:VAL:CG1	2:A:400:PLP:H5A1	2.25	0.66
1:C:240:LYS:NZ	1:H:27:LYS:HZ3	1.94	0.66
1:E:66:HIS:CD2	1:E:117:PHE:CD2	2.84	0.65
1:H:114:VAL:HB	2:H:400:PLP:O1P	1.97	0.64
1:A:49:THR:HG23	1:A:62:LYS:HG2	1.80	0.64
1:C:195:CYS:HA	1:C:197:CYS:SG	2.38	0.64
1:H:63:ALA:HB3	1:H:66:HIS:ND1	2.12	0.64
1:B:19:ILE:CG2	1:B:20:PRO:HD3	2.28	0.63
1:F:111:ILE:HD12	1:F:136:TYR:HD1	1.62	0.63
1:F:5:LYS:HG2	1:F:36:ASP:OD2	1.99	0.62
1:F:113:TYR:CE1	1:F:115:GLY:O	2.51	0.62
1:G:19:ILE:HG12	1:G:23:LEU:HD22	1.81	0.62
1:G:66:HIS:HD2	1:G:117:PHE:CD2	2.17	0.62
1:E:53:GLY:HA3	1:E:75:PHE:HB3	1.81	0.62
1:H:117:PHE:N	2:H:400:PLP:O2P	2.32	0.62
1:F:63:ALA:HB3	1:F:66:HIS:ND1	2.15	0.61

*Continued on next page...*

*Continued from previous page...*

Atom-1	Atom-2	Interatomic distance (Å)	Clash overlap (Å)
1:C:19:ILE:HG12	1:C:23:LEU:HD22	1.81	0.61
1:A:5:LYS:HG2	1:A:36:ASP:OD2	2.02	0.60
1:A:114:VAL:HG11	2:A:400:PLP:H5A1	1.83	0.60
1:A:117:PHE:HD2	2:A:400:PLP:O1P	1.84	0.60
1:C:53:GLY:HA3	1:C:75:PHE:HB3	1.84	0.60
1:B:114:VAL:HB	2:B:400:PLP:O1P	2.02	0.60
1:B:195:CYS:C	1:B:197:CYS:H	2.05	0.60
1:H:5:LYS:HG2	1:H:36:ASP:OD2	2.02	0.59
1:C:195:CYS:C	1:C:197:CYS:H	2.03	0.59
1:H:117:PHE:O	1:H:121:GLN:HG3	2.02	0.59
1:A:292:ASP:CG	1:D:218:ARG:NH1	2.56	0.59
1:F:19:ILE:CG2	1:F:20:PRO:HD3	2.32	0.59
1:A:292:ASP:OD1	1:D:218:ARG:NH1	2.34	0.59
1:E:230:TYR:CZ	1:E:241:GLU:OE2	2.56	0.59
1:B:13:GLN:HG3	1:B:143:MET:SD	2.42	0.59
1:D:188:ASP:CB	1:D:196:CYS:HB3	2.32	0.59
1:D:195:CYS:HA	1:D:197:CYS:SG	2.43	0.59
1:F:188:ASP:CB	1:F:196:CYS:HB3	2.32	0.59
1:A:11:ASN:HD22	2:A:400:PLP:C2A	2.13	0.59
1:G:195:CYS:HA	1:G:197:CYS:SG	2.43	0.58
1:A:13:GLN:HG3	1:A:143:MET:SD	2.44	0.58
1:B:188:ASP:CB	1:B:196:CYS:HB3	2.32	0.58
1:C:114:VAL:HG13	1:C:142:GLY:O	2.03	0.58
1:E:126:THR:OG1	1:E:133:PRO:HD3	2.03	0.58
1:D:5:LYS:HG2	1:D:36:ASP:OD2	2.03	0.58
1:C:5:LYS:HG2	1:C:36:ASP:OD2	2.02	0.58
1:C:188:ASP:CB	1:C:196:CYS:HB3	2.33	0.58
1:D:94:LEU:HD22	1:D:172:LEU:HD21	1.85	0.58
1:G:134:GLU:HB2	1:G:136:TYR:O	2.03	0.58
1:A:126:THR:OG1	1:A:133:PRO:HD3	2.03	0.58
1:E:111:ILE:HD12	1:E:136:TYR:CD1	2.38	0.58
1:H:53:GLY:HA3	1:H:75:PHE:HB3	1.86	0.58
1:C:113:TYR:CE1	1:C:115:GLY:O	2.54	0.58
1:A:53:GLY:HA3	1:A:75:PHE:HB3	1.85	0.57
1:H:126:THR:OG1	1:H:133:PRO:HD3	2.05	0.57
1:A:195:CYS:C	1:A:197:CYS:H	2.07	0.57
1:C:192:CYS:HB3	1:C:195:CYS:SG	2.44	0.57
1:G:53:GLY:HA3	1:G:75:PHE:HB3	1.85	0.57
1:F:195:CYS:C	1:F:197:CYS:H	2.06	0.57
1:E:19:ILE:CG2	1:E:20:PRO:HD3	2.35	0.57
1:A:195:CYS:HA	1:A:197:CYS:SG	2.44	0.57

*Continued on next page...*



*Continued from previous page...*

Atom-1	Atom-2	Interatomic distance (Å)	Clash overlap (Å)
1:F:161:GLU:OE2	1:F:260:ARG:NH1	2.37	0.57
1:B:53:GLY:HA3	1:B:75:PHE:HB3	1.86	0.57
1:D:13:GLN:HG3	1:D:143:MET:SD	2.45	0.57
1:D:126:THR:OG1	1:D:133:PRO:HD3	2.05	0.57
1:G:119:LYS:HE2	1:G:123:ASP:OD2	2.04	0.56
1:E:5:LYS:HG2	1:E:36:ASP:OD2	2.06	0.56
1:G:111:ILE:HD12	1:G:136:TYR:CD1	2.39	0.56
1:G:195:CYS:C	1:G:197:CYS:H	2.07	0.56
1:F:72:ALA:O	1:H:211:LYS:HE2	2.04	0.56
1:H:13:GLN:HG3	1:H:143:MET:SD	2.45	0.56
1:H:195:CYS:C	1:H:197:CYS:H	2.08	0.56
1:B:115:GLY:N	2:B:400:PLP:O1P	2.28	0.56
1:D:53:GLY:HA3	1:D:75:PHE:HB3	1.87	0.56
1:G:126:THR:OG1	1:G:133:PRO:HD3	2.06	0.56
1:C:13:GLN:HG3	1:C:143:MET:SD	2.46	0.56
1:A:94:LEU:HD22	1:A:172:LEU:HD21	1.87	0.56
1:E:195:CYS:C	1:E:197:CYS:H	2.07	0.56
1:G:188:ASP:CB	1:G:196:CYS:HB3	2.33	0.56
1:H:111:ILE:HD12	1:H:136:TYR:CD1	2.40	0.56
1:F:126:THR:OG1	1:F:133:PRO:HD3	2.06	0.56
1:A:292:ASP:CG	1:D:218:ARG:HH12	2.10	0.55
1:A:12:TRP:CZ2	1:A:143:MET:HA	2.41	0.55
1:B:21:ILE:CD1	1:B:61:LEU:HD11	2.36	0.55
1:E:230:TYR:HE2	1:E:241:GLU:OE1	1.89	0.55
1:G:116:GLU:HG2	1:G:117:PHE:N	2.20	0.55
1:A:134:GLU:HB2	1:A:136:TYR:O	2.06	0.55
1:G:5:LYS:HG2	1:G:36:ASP:OD2	2.07	0.55
1:B:122:ILE:O	1:B:126:THR:HG23	2.07	0.55
1:E:63:ALA:HB3	1:E:66:HIS:ND1	2.22	0.55
1:G:68:LEU:HD12	1:G:279:VAL:HG12	1.89	0.55
1:B:195:CYS:HA	1:B:197:CYS:SG	2.46	0.55
1:C:126:THR:OG1	1:C:133:PRO:HD3	2.07	0.55
1:G:19:ILE:CG2	1:G:20:PRO:HD3	2.37	0.55
1:B:5:LYS:HG2	1:B:36:ASP:OD2	2.07	0.54
1:D:195:CYS:C	1:D:197:CYS:H	2.09	0.54
1:A:19:ILE:CG2	1:A:20:PRO:HD3	2.37	0.54
1:C:134:GLU:HB2	1:C:136:TYR:O	2.08	0.54
1:B:134:GLU:HB2	1:B:136:TYR:O	2.06	0.54
1:D:63:ALA:O	1:D:67:THR:OG1	2.21	0.54
1:D:111:ILE:HD12	1:D:136:TYR:CD1	2.42	0.54
1:F:13:GLN:HG3	1:F:143:MET:SD	2.48	0.54

*Continued on next page...*

*Continued from previous page...*

Atom-1	Atom-2	Interatomic distance (Å)	Clash overlap (Å)
1:H:188:ASP:CB	1:H:196:CYS:HB3	2.34	0.54
1:F:53:GLY:HA3	1:F:75:PHE:HB3	1.90	0.54
1:F:97:SER:N	1:F:98:GLY:CA	2.68	0.54
1:A:115:GLY:N	2:A:400:PLP:O3P	2.40	0.54
1:F:94:LEU:HD22	1:F:172:LEU:HD21	1.90	0.54
1:B:111:ILE:HD12	1:B:136:TYR:CD1	2.43	0.53
1:C:19:ILE:CG2	1:C:20:PRO:HD3	2.38	0.53
1:A:111:ILE:HD12	1:A:136:TYR:CD1	2.43	0.53
1:F:195:CYS:HA	1:F:197:CYS:SG	2.49	0.53
1:H:134:GLU:HB2	1:H:136:TYR:O	2.09	0.53
1:E:195:CYS:HA	1:E:197:CYS:SG	2.48	0.53
1:H:94:LEU:HD22	1:H:172:LEU:HD21	1.91	0.53
1:D:19:ILE:CG2	1:D:20:PRO:HD3	2.39	0.52
1:A:286:LEU:O	1:A:287:ALA:HB3	2.10	0.52
1:C:63:ALA:HA	1:C:200:THR:O	2.09	0.52
1:G:94:LEU:HD22	1:G:172:LEU:HD21	1.91	0.52
1:F:61:LEU:HA	1:F:202:LEU:O	2.09	0.52
1:A:119:LYS:HE2	1:A:123:ASP:OD2	2.08	0.52
1:D:178:PRO:HD2	1:D:181:ASP:OD2	2.10	0.52
1:E:117:PHE:O	1:E:121:GLN:HG3	2.10	0.52
1:E:134:GLU:HB2	1:E:136:TYR:O	2.10	0.52
1:B:126:THR:OG1	1:B:133:PRO:HD3	2.10	0.51
1:F:117:PHE:CD1	1:F:120:ILE:HD12	2.45	0.51
1:F:178:PRO:HD2	1:F:181:ASP:OD2	2.11	0.51
1:D:160:ILE:HG22	1:D:162:CYS:H	1.75	0.51
1:G:161:GLU:OE2	1:G:260:ARG:NH1	2.43	0.51
1:F:64:MET:HA	1:F:202:LEU:HD11	1.93	0.51
1:F:122:ILE:O	1:F:126:THR:HG23	2.10	0.51
1:C:240:LYS:HZ3	1:H:27:LYS:NZ	2.01	0.51
1:H:213:ASN:N	1:H:214:PRO:HD3	2.26	0.51
1:F:19:ILE:CG1	1:F:23:LEU:HD22	2.41	0.51
1:B:213:ASN:N	1:B:214:PRO:HD3	2.26	0.51
1:E:268:SER:O	1:E:269:LEU:HB2	2.11	0.51
1:F:134:GLU:HB2	1:F:136:TYR:O	2.10	0.50
1:A:213:ASN:N	1:A:214:PRO:HD3	2.26	0.50
1:H:12:TRP:CZ2	1:H:143:MET:HA	2.47	0.50
1:H:19:ILE:CG2	1:H:20:PRO:HD3	2.42	0.50
1:B:19:ILE:HG22	1:B:20:PRO:HD3	1.92	0.50
1:B:110:LYS:HD2	1:C:233:ALA:HB2	1.94	0.50
1:B:186:ARG:HD2	1:B:188:ASP:OD2	2.11	0.50
1:B:19:ILE:HG23	1:B:20:PRO:HD3	1.94	0.50

*Continued on next page...*

*Continued from previous page...*

Atom-1	Atom-2	Interatomic distance (Å)	Clash overlap (Å)
1:D:190:LEU:HD12	1:D:191:ALA:H	1.75	0.50
1:E:13:GLN:HG3	1:E:143:MET:SD	2.52	0.50
1:H:161:GLU:OE2	1:H:260:ARG:NH1	2.45	0.50
1:H:195:CYS:HA	1:H:197:CYS:SG	2.52	0.50
1:F:19:ILE:HG22	1:F:20:PRO:HD3	1.94	0.49
1:F:314:LEU:HD12	1:F:314:LEU:O	2.13	0.49
1:H:68:LEU:HD12	1:H:279:VAL:HG12	1.93	0.49
1:E:27:LYS:CE	1:E:241:GLU:OE1	2.53	0.49
1:H:19:ILE:CG1	1:H:23:LEU:HD22	2.43	0.49
1:C:186:ARG:HD2	1:C:188:ASP:OD2	2.12	0.49
1:D:63:ALA:HB3	1:D:66:HIS:ND1	2.27	0.49
1:F:27:LYS:HE3	1:F:230:TYR:CE2	2.48	0.49
1:B:5:LYS:HE3	1:H:47:ASP:HA	1.95	0.49
1:G:117:PHE:O	1:G:121:GLN:HG3	2.13	0.49
1:G:213:ASN:N	1:G:214:PRO:HD3	2.27	0.49
1:H:186:ARG:HD2	1:H:188:ASP:OD2	2.12	0.49
1:D:149:ILE:HG13	1:D:154:ILE:HD11	1.95	0.49
1:G:12:TRP:CZ2	1:G:143:MET:HA	2.48	0.49
1:G:66:HIS:HD2	1:G:117:PHE:HD2	1.50	0.49
1:E:134:GLU:O	1:E:134:GLU:HG3	2.13	0.49
1:A:76:PRO:HB2	1:A:207:ASP:HB2	1.94	0.49
1:C:160:ILE:HG22	1:C:162:CYS:H	1.77	0.49
1:G:186:ARG:HD2	1:G:188:ASP:OD2	2.13	0.49
1:E:230:TYR:CE2	1:E:241:GLU:CD	2.86	0.49
1:H:160:ILE:HG22	1:H:162:CYS:H	1.78	0.49
1:F:64:MET:HA	1:F:202:LEU:CD1	2.43	0.48
1:C:178:PRO:HD2	1:C:181:ASP:OD2	2.13	0.48
1:E:122:ILE:O	1:E:126:THR:HG23	2.13	0.48
1:A:149:ILE:HG13	1:A:154:ILE:HD11	1.95	0.48
1:B:49:THR:HG23	1:B:62:LYS:HG2	1.95	0.48
1:C:133:PRO:HA	1:C:134:GLU:HA	1.53	0.48
1:H:270:TYR:CE1	1:H:299:ASN:HB3	2.48	0.48
1:C:161:GLU:OE2	1:C:260:ARG:NH1	2.46	0.48
1:D:19:ILE:CG1	1:D:23:LEU:HD22	2.43	0.48
1:E:19:ILE:HG22	1:E:20:PRO:HD3	1.95	0.48
1:D:186:ARG:HD2	1:D:188:ASP:OD2	2.13	0.48
1:H:177:ARG:CG	1:H:177:ARG:NH1	2.67	0.48
1:G:160:ILE:HG22	1:G:162:CYS:H	1.79	0.48
1:C:27:LYS:HE3	1:C:230:TYR:CE2	2.49	0.48
1:G:27:LYS:HE3	1:G:230:TYR:CE2	2.49	0.48
1:G:64:MET:HE2	1:G:276:TRP:CE2	2.49	0.48

*Continued on next page...*

*Continued from previous page...*

Atom-1	Atom-2	Interatomic distance (Å)	Clash overlap (Å)
1:A:160:ILE:HG22	1:A:162:CYS:H	1.79	0.47
1:C:111:ILE:HD12	1:C:136:TYR:CD1	2.48	0.47
1:D:134:GLU:HG3	1:D:134:GLU:O	2.14	0.47
1:H:27:LYS:HE3	1:H:230:TYR:CE2	2.48	0.47
1:C:213:ASN:N	1:C:214:PRO:HD3	2.29	0.47
1:B:149:ILE:HG13	1:B:154:ILE:HD11	1.96	0.47
1:E:117:PHE:N	2:E:400:PLP:O2P	2.44	0.47
1:E:149:ILE:HG13	1:E:154:ILE:HD11	1.95	0.47
1:F:160:ILE:HG22	1:F:162:CYS:H	1.79	0.47
1:F:213:ASN:N	1:F:214:PRO:HD3	2.30	0.47
1:F:268:SER:O	1:F:269:LEU:HB2	2.15	0.47
1:B:161:GLU:OE2	1:B:260:ARG:NH1	2.48	0.47
1:C:64:MET:HE2	1:C:276:TRP:CE2	2.50	0.47
1:B:62:LYS:NZ	2:B:400:PLP:O3	2.48	0.47
1:B:76:PRO:HB2	1:B:207:ASP:HB2	1.96	0.47
1:C:61:LEU:HA	1:C:202:LEU:O	2.14	0.47
1:E:62:LYS:NZ	2:E:400:PLP:O3	2.47	0.47
1:E:94:LEU:HD22	1:E:172:LEU:HD21	1.97	0.47
1:F:286:LEU:O	1:F:287:ALA:HB3	2.14	0.47
1:E:27:LYS:HE3	1:E:230:TYR:CE2	2.49	0.47
1:E:213:ASN:N	1:E:214:PRO:HD3	2.30	0.47
1:F:132:LYS:O	1:F:135:ASP:N	2.48	0.47
1:A:74:GLY:O	1:D:305:PRO:HD3	2.14	0.47
1:C:12:TRP:CZ2	1:C:143:MET:HA	2.50	0.47
1:C:62:LYS:HG3	1:C:66:HIS:ND1	2.29	0.47
1:C:104:GLN:HA	1:C:131:MET:CE	2.44	0.47
1:C:325:GLU:OE2	1:C:328:ARG:NH1	2.48	0.47
1:E:62:LYS:HD2	1:E:62:LYS:HA	1.69	0.47
1:G:104:GLN:HA	1:G:131:MET:HE1	1.97	0.47
1:H:256:LYS:O	1:H:260:ARG:HG2	2.15	0.47
1:B:268:SER:O	1:B:269:LEU:HB2	2.15	0.47
1:A:134:GLU:O	1:A:134:GLU:HG3	2.15	0.46
1:D:104:GLN:HA	1:D:131:MET:HE1	1.97	0.46
1:D:133:PRO:HA	1:D:134:GLU:HA	1.73	0.46
1:H:149:ILE:HG13	1:H:154:ILE:HD11	1.97	0.46
1:A:259:GLN:HG2	1:A:333:PHE:CZ	2.51	0.46
1:B:134:GLU:O	1:B:134:GLU:HG3	2.14	0.46
1:C:19:ILE:HG22	1:C:20:PRO:HD3	1.98	0.46
1:C:94:LEU:HD22	1:C:172:LEU:HD21	1.97	0.46
1:G:13:GLN:HG3	1:G:143:MET:SD	2.55	0.46
1:G:314:LEU:O	1:G:314:LEU:HD12	2.15	0.46

*Continued on next page...*

*Continued from previous page...*

Atom-1	Atom-2	Interatomic distance (Å)	Clash overlap (Å)
1:H:133:PRO:HA	1:H:134:GLU:HA	1.51	0.46
1:E:27:LYS:CE	1:E:241:GLU:OE2	2.63	0.46
1:A:161:GLU:OE2	1:A:260:ARG:NH1	2.48	0.46
1:E:49:THR:HG23	1:E:62:LYS:HG2	1.97	0.46
1:B:104:GLN:HA	1:B:131:MET:HE1	1.98	0.46
1:E:256:LYS:O	1:E:260:ARG:HG2	2.16	0.46
1:H:134:GLU:O	1:H:134:GLU:HG3	2.15	0.46
1:D:63:ALA:HA	1:D:200:THR:O	2.16	0.46
1:H:76:PRO:HB2	1:H:207:ASP:HB2	1.97	0.46
1:A:27:LYS:HE3	1:A:230:TYR:CE2	2.50	0.46
1:H:260:ARG:HH21	1:H:328:ARG:HG3	1.79	0.46
1:F:64:MET:HG2	1:F:279:VAL:HG11	1.98	0.46
1:B:133:PRO:HA	1:B:134:GLU:HA	1.51	0.46
1:B:19:ILE:CG1	1:B:23:LEU:HD22	2.44	0.45
1:B:160:ILE:HG22	1:B:162:CYS:H	1.81	0.45
1:C:134:GLU:O	1:C:134:GLU:HG3	2.15	0.45
1:A:132:LYS:O	1:A:135:ASP:N	2.49	0.45
1:B:108:GLY:O	1:C:225:LYS:NZ	2.45	0.45
1:D:161:GLU:OE2	1:D:260:ARG:NH1	2.49	0.45
1:G:122:ILE:O	1:G:126:THR:HG23	2.15	0.45
1:F:133:PRO:HA	1:F:134:GLU:HA	1.52	0.45
1:B:27:LYS:HE3	1:B:230:TYR:CE2	2.52	0.45
1:D:213:ASN:N	1:D:214:PRO:HD3	2.32	0.45
1:E:160:ILE:HG22	1:E:162:CYS:H	1.81	0.45
1:G:133:PRO:HA	1:G:134:GLU:HA	1.52	0.45
1:G:270:TYR:CE1	1:G:299:ASN:HB3	2.51	0.45
1:A:62:LYS:HD2	1:A:62:LYS:HA	1.76	0.45
1:D:177:ARG:CG	1:D:177:ARG:NH1	2.70	0.45
1:G:68:LEU:CD1	1:G:279:VAL:HG12	2.46	0.45
1:F:149:ILE:HG13	1:F:154:ILE:HD11	1.99	0.45
1:B:68:LEU:HD12	1:B:279:VAL:HG12	1.99	0.45
1:E:215:GLU:H	1:E:215:GLU:CD	2.20	0.45
1:G:286:LEU:O	1:G:287:ALA:HB3	2.16	0.45
1:D:114:VAL:HG12	1:D:115:GLY:N	2.31	0.45
1:E:161:GLU:OE2	1:E:260:ARG:NH1	2.49	0.45
1:H:268:SER:O	1:H:269:LEU:HB2	2.16	0.45
1:B:117:PHE:CD1	1:B:120:ILE:HD12	2.52	0.45
1:C:240:LYS:HZ1	1:H:27:LYS:HZ1	1.65	0.45
1:A:63:ALA:HB3	1:A:66:HIS:ND1	2.31	0.45
1:A:104:GLN:HA	1:A:131:MET:HE1	1.99	0.45
1:A:122:ILE:O	1:A:126:THR:HG23	2.17	0.45

*Continued on next page...*

*Continued from previous page...*

Atom-1	Atom-2	Interatomic distance (Å)	Clash overlap (Å)
1:B:286:LEU:O	1:B:287:ALA:HB3	2.16	0.45
1:C:68:LEU:HD12	1:C:279:VAL:HG12	1.99	0.45
1:G:178:PRO:HD2	1:G:181:ASP:OD2	2.16	0.45
1:G:268:SER:O	1:G:269:LEU:HB2	2.16	0.45
1:F:104:GLN:HA	1:F:131:MET:HE1	1.98	0.44
1:A:93:TYR:CZ	1:A:183:LYS:HB3	2.52	0.44
1:A:117:PHE:CD2	2:A:400:PLP:O1P	2.67	0.44
1:B:178:PRO:HD2	1:B:181:ASP:OD2	2.16	0.44
1:E:63:ALA:HA	1:E:200:THR:O	2.17	0.44
1:E:104:GLN:HA	1:E:131:MET:HE1	1.99	0.44
1:G:21:ILE:CD1	1:G:61:LEU:HD11	2.47	0.44
1:G:134:GLU:O	1:G:134:GLU:HG3	2.16	0.44
1:G:186:ARG:O	1:G:190:LEU:HD23	2.17	0.44
1:F:134:GLU:O	1:F:134:GLU:HG3	2.17	0.44
1:B:314:LEU:O	1:B:314:LEU:HD12	2.17	0.44
1:D:256:LYS:O	1:D:260:ARG:HG2	2.18	0.44
1:E:66:HIS:HD2	1:E:117:PHE:CE2	2.33	0.44
1:F:239:TRP:HB2	1:F:258:TYR:CE2	2.52	0.44
1:A:133:PRO:HA	1:A:134:GLU:HA	1.52	0.44
1:D:92:LEU:O	1:D:156:ALA:HB1	2.17	0.44
1:H:29:TYR:N	1:H:29:TYR:CD1	2.85	0.44
1:F:92:LEU:O	1:F:156:ALA:HB1	2.17	0.44
1:C:122:ILE:O	1:C:126:THR:HG23	2.16	0.44
1:C:165:GLN:O	1:C:169:GLU:HG3	2.18	0.44
1:E:286:LEU:O	1:E:287:ALA:HB3	2.17	0.44
1:G:11:ASN:ND2	1:G:12:TRP:HB2	2.32	0.44
1:F:104:GLN:HA	1:F:131:MET:CE	2.47	0.44
1:F:186:ARG:HD2	1:F:188:ASP:OD2	2.17	0.44
1:A:268:SER:O	1:A:269:LEU:HB2	2.17	0.44
1:D:268:SER:O	1:D:269:LEU:HB2	2.18	0.44
1:G:23:LEU:HD12	1:G:23:LEU:HA	1.85	0.44
1:C:268:SER:O	1:C:269:LEU:HB2	2.17	0.44
1:D:104:GLN:HA	1:D:131:MET:CE	2.48	0.44
1:G:103:PHE:CE2	1:G:125:LEU:HB3	2.52	0.44
1:H:122:ILE:O	1:H:126:THR:HG23	2.17	0.44
1:A:59:MET:HG2	1:A:205:CYS:SG	2.58	0.44
1:H:314:LEU:HD12	1:H:314:LEU:O	2.18	0.44
1:F:19:ILE:HG23	1:F:20:PRO:HD3	1.99	0.44
1:D:68:LEU:HD12	1:D:279:VAL:HG12	1.99	0.44
1:C:195:CYS:C	1:C:197:CYS:N	2.70	0.43
1:C:240:LYS:HZ1	1:H:27:LYS:NZ	2.14	0.43

*Continued on next page...*

*Continued from previous page...*

Atom-1	Atom-2	Interatomic distance (Å)	Clash overlap (Å)
1:D:192:CYS:SG	1:D:195:CYS:SG	3.16	0.43
1:E:104:GLN:HA	1:E:131:MET:CE	2.48	0.43
1:E:133:PRO:HA	1:E:134:GLU:HA	1.54	0.43
1:B:104:GLN:HA	1:B:131:MET:CE	2.47	0.43
1:B:270:TYR:CE1	1:B:299:ASN:HB3	2.52	0.43
1:C:186:ARG:O	1:C:190:LEU:HD23	2.18	0.43
1:D:122:ILE:O	1:D:126:THR:HG23	2.18	0.43
1:H:165:GLN:O	1:H:169:GLU:HG3	2.18	0.43
1:H:239:TRP:HB2	1:H:258:TYR:CE2	2.54	0.43
1:B:239:TRP:HB2	1:B:258:TYR:CE2	2.54	0.43
1:D:12:TRP:CH2	1:D:143:MET:HA	2.54	0.43
1:D:19:ILE:HG22	1:D:20:PRO:HD3	2.00	0.43
1:D:286:LEU:O	1:D:287:ALA:HB3	2.18	0.43
1:A:65:ILE:HG23	1:A:66:HIS:CD2	2.54	0.43
1:C:12:TRP:O	1:C:42:PRO:HD2	2.19	0.43
1:C:132:LYS:O	1:C:135:ASP:N	2.52	0.43
1:C:240:LYS:NZ	1:H:27:LYS:HZ1	2.15	0.43
1:E:240:LYS:HA	1:E:243:ILE:HG12	2.00	0.43
1:C:286:LEU:O	1:C:287:ALA:HB3	2.19	0.43
2:E:400:PLP:O3P	2:E:400:PLP:C6	2.63	0.43
1:H:27:LYS:HE3	1:H:230:TYR:CD2	2.53	0.43
1:A:19:ILE:HG22	1:A:20:PRO:HD3	2.00	0.43
1:G:325:GLU:OE2	1:G:328:ARG:NH1	2.52	0.43
1:H:312:ASP:HA	1:H:313:PRO:HD2	1.92	0.43
1:B:195:CYS:C	1:B:197:CYS:N	2.72	0.43
1:H:49:THR:HG23	1:H:62:LYS:HG2	2.01	0.43
1:H:68:LEU:CD1	1:H:279:VAL:HG12	2.49	0.43
1:C:29:TYR:N	1:C:29:TYR:CD1	2.87	0.43
1:E:306:GLU:HA	1:E:307:PRO:HD3	1.92	0.43
1:G:19:ILE:HG22	1:G:20:PRO:HD3	2.01	0.43
1:A:239:TRP:HB2	1:A:258:TYR:CE2	2.53	0.43
1:E:93:TYR:CZ	1:E:183:LYS:HB3	2.54	0.43
1:B:325:GLU:OE2	1:B:328:ARG:NH1	2.52	0.42
1:C:103:PHE:O	1:C:103:PHE:CD1	2.72	0.42
1:C:125:LEU:HD21	1:C:191:ALA:HB2	2.01	0.42
1:G:19:ILE:CG1	1:G:23:LEU:HD22	2.47	0.42
1:G:104:GLN:HA	1:G:131:MET:CE	2.49	0.42
1:H:29:TYR:CE2	1:H:226:LYS:HG2	2.54	0.42
1:C:64:MET:HE1	1:C:276:TRP:CD1	2.54	0.42
1:H:132:LYS:O	1:H:135:ASP:N	2.52	0.42
1:E:132:LYS:O	1:E:135:ASP:N	2.52	0.42

*Continued on next page...*

*Continued from previous page...*

Atom-1	Atom-2	Interatomic distance (Å)	Clash overlap (Å)
1:A:19:ILE:CG1	1:A:23:LEU:HD22	2.47	0.42
1:D:187:ILE:O	1:D:191:ALA:HB3	2.20	0.42
1:G:81:ALA:HB3	1:G:203:TYR:HB2	2.01	0.42
1:H:63:ALA:HB3	1:H:66:HIS:CE1	2.54	0.42
1:E:161:GLU:O	1:E:165:GLN:HB3	2.19	0.42
1:A:306:GLU:HA	1:A:307:PRO:HD3	1.93	0.42
1:E:23:LEU:HD12	1:E:23:LEU:HA	1.80	0.42
1:G:76:PRO:HB2	1:G:207:ASP:HB2	2.02	0.42
1:A:104:GLN:HA	1:A:131:MET:CE	2.49	0.42
1:A:116:GLU:H	2:A:400:PLP:P	2.43	0.42
1:D:27:LYS:HE3	1:D:230:TYR:CE2	2.55	0.42
1:D:61:LEU:HA	1:D:202:LEU:O	2.20	0.42
1:E:19:ILE:CG1	1:E:23:LEU:HD22	2.47	0.42
1:E:27:LYS:CE	1:E:241:GLU:CD	2.83	0.42
1:E:27:LYS:NZ	1:E:241:GLU:OE2	2.52	0.42
1:E:68:LEU:HD12	1:E:279:VAL:HG12	2.01	0.42
1:F:27:LYS:HE3	1:F:230:TYR:CD2	2.55	0.42
1:C:149:ILE:HG13	1:C:154:ILE:HD11	2.02	0.42
1:C:239:TRP:HB2	1:C:258:TYR:CE2	2.55	0.42
1:D:104:GLN:NE2	1:D:129:TYR:HB3	2.35	0.42
1:D:245:PHE:C	1:D:247:PRO:HD3	2.39	0.42
1:G:312:ASP:HA	1:G:313:PRO:HD2	1.89	0.42
1:H:104:GLN:HA	1:H:131:MET:CE	2.50	0.42
1:A:114:VAL:HB	2:A:400:PLP:H5A1	2.01	0.42
1:B:117:PHE:O	1:B:118:GLY:C	2.53	0.42
1:C:256:LYS:O	1:C:260:ARG:HG2	2.20	0.42
1:C:314:LEU:HD12	1:C:314:LEU:O	2.20	0.41
1:G:132:LYS:O	1:G:135:ASP:N	2.51	0.41
1:H:286:LEU:O	1:H:287:ALA:HB3	2.19	0.41
1:F:68:LEU:HD12	1:F:279:VAL:HG12	2.01	0.41
1:A:29:TYR:CE2	1:A:226:LYS:HG2	2.55	0.41
1:B:290:PRO:HA	1:B:291:PRO:HD3	1.89	0.41
1:G:27:LYS:HE3	1:G:230:TYR:CD2	2.55	0.41
1:B:187:ILE:O	1:B:187:ILE:HG22	2.20	0.41
1:D:23:LEU:HD12	1:D:23:LEU:HA	1.83	0.41
1:F:93:TYR:CZ	1:F:183:LYS:HB3	2.55	0.41
1:B:29:TYR:N	1:B:29:TYR:CD1	2.88	0.41
1:D:97:SER:N	1:D:98:GLY:CA	2.74	0.41
1:E:126:THR:HG21	1:E:136:TYR:CE2	2.56	0.41
1:G:29:TYR:N	1:G:29:TYR:CD1	2.89	0.41
1:G:149:ILE:HG13	1:G:154:ILE:HD11	2.03	0.41

*Continued on next page...*



*Continued from previous page...*

Atom-1	Atom-2	Interatomic distance (Å)	Clash overlap (Å)
1:G:306:GLU:HA	1:G:307:PRO:HD3	1.90	0.41
1:A:215:GLU:CD	1:A:215:GLU:H	2.24	0.41
1:B:22:PHE:O	1:B:25:GLN:HB3	2.19	0.41
1:D:93:TYR:CZ	1:D:183:LYS:HB3	2.55	0.41
1:D:314:LEU:HD12	1:D:314:LEU:O	2.21	0.41
1:E:27:LYS:HE2	1:E:241:GLU:OE2	2.19	0.41
1:E:114:VAL:HG13	1:E:142:GLY:O	2.20	0.41
1:H:62:LYS:NZ	2:H:400:PLP:O3	2.53	0.41
1:A:312:ASP:HA	1:A:313:PRO:HD2	1.91	0.41
1:D:12:TRP:O	1:D:42:PRO:HD2	2.21	0.41
1:C:19:ILE:N	1:C:20:PRO:CD	2.84	0.41
1:D:29:TYR:CE2	1:D:226:LYS:HG2	2.56	0.41
1:E:253:LEU:HD12	1:E:253:LEU:O	2.20	0.41
1:G:256:LYS:O	1:G:260:ARG:HG2	2.21	0.41
1:H:195:CYS:C	1:H:197:CYS:N	2.74	0.41
1:F:75:PHE:HA	1:F:76:PRO:HD2	1.98	0.41
1:A:314:LEU:HD12	1:A:314:LEU:O	2.20	0.41
1:G:19:ILE:HG23	1:G:20:PRO:HD3	2.03	0.41
1:G:113:TYR:N	1:G:113:TYR:CD2	2.88	0.41
1:H:102:SER:C	1:H:104:GLN:H	2.24	0.41
1:D:22:PHE:O	1:D:25:GLN:HB3	2.20	0.41
1:G:109:LYS:HA	1:G:109:LYS:HD3	1.94	0.41
1:F:256:LYS:O	1:F:260:ARG:HG2	2.21	0.40
1:F:286:LEU:HD23	1:F:286:LEU:HA	1.94	0.40
1:A:68:LEU:HD12	1:A:279:VAL:HG12	2.03	0.40
1:F:230:TYR:HE2	1:F:238:ALA:HA	1.87	0.40
1:B:116:GLU:N	2:B:400:PLP:O2P	2.41	0.40
1:B:306:GLU:HA	1:B:307:PRO:HD3	1.89	0.40
1:B:312:ASP:HA	1:B:313:PRO:HD2	1.91	0.40
1:D:132:LYS:O	1:D:135:ASP:N	2.55	0.40
1:H:325:GLU:OE2	1:H:328:ARG:NH1	2.54	0.40
1:F:11:ASN:OD1	1:F:11:ASN:N	2.45	0.40
1:F:97:SER:H	1:F:98:GLY:HA2	1.77	0.40
1:A:114:VAL:CB	2:A:400:PLP:H5A1	2.51	0.40
1:A:270:TYR:CE1	1:A:299:ASN:HB3	2.57	0.40
1:D:165:GLN:O	1:D:169:GLU:HG3	2.22	0.40
1:H:93:TYR:CZ	1:H:183:LYS:HB3	2.56	0.40
1:F:5:LYS:HE3	1:A:47:ASP:HA	2.04	0.40
1:D:93:TYR:HB3	1:D:156:ALA:HB2	2.04	0.40
1:H:187:ILE:O	1:H:187:ILE:HG22	2.21	0.40
1:H:289:LEU:HA	1:H:290:PRO:HD3	1.98	0.40

*Continued on next page...*

Continued from previous page...

Atom-1	Atom-2	Interatomic distance (Å)	Clash overlap (Å)
1:A:12:TRP:CZ2	1:A:143:MET:HG2	2.57	0.40
1:D:113:TYR:HE1	1:D:115:GLY:O	2.04	0.40
1:G:11:ASN:HB3	1:G:61:LEU:O	2.22	0.40
1:G:93:TYR:CZ	1:G:183:LYS:HB3	2.57	0.40

All (2) symmetry-related close contacts are listed below. The label for Atom-2 includes the symmetry operator and encoded unit-cell translations to be applied.

Atom-1	Atom-2	Interatomic distance (Å)	Clash overlap (Å)
1:F:218:ARG:NH1	1:E:292:ASP:OD2[1_455]	2.05	0.15
1:F:96:GLY:O	1:D:108:GLY:CA[2_656]	2.17	0.03

## 5.3 Torsion angles [i](#)

### 5.3.1 Protein backbone [i](#)

In the following table, the Percentiles column shows the percent Ramachandran outliers of the chain as a percentile score with respect to all X-ray entries followed by that with respect to entries of similar resolution.

The Analysed column shows the number of residues for which the backbone conformation was analysed, and the total number of residues.

Mol	Chain	Analysed	Favoured	Allowed	Outliers	Percentiles	
1	A	306/346 (88%)	298 (97%)	7 (2%)	1 (0%)	41	71
1	B	325/346 (94%)	314 (97%)	11 (3%)	0	100	100
1	C	333/346 (96%)	325 (98%)	8 (2%)	0	100	100
1	D	329/346 (95%)	317 (96%)	12 (4%)	0	100	100
1	E	296/346 (86%)	288 (97%)	7 (2%)	1 (0%)	41	71
1	F	326/346 (94%)	318 (98%)	8 (2%)	0	100	100
1	G	327/346 (94%)	317 (97%)	10 (3%)	0	100	100
1	H	324/346 (94%)	313 (97%)	9 (3%)	2 (1%)	25	58
All	All	2566/2768 (93%)	2490 (97%)	72 (3%)	4 (0%)	47	78

All (4) Ramachandran outliers are listed below:

Mol	Chain	Res	Type
1	A	115	GLY
1	H	115	GLY
1	H	103	PHE
1	E	115	GLY

### 5.3.2 Protein sidechains [i](#)

In the following table, the Percentiles column shows the percent sidechain outliers of the chain as a percentile score with respect to all X-ray entries followed by that with respect to entries of similar resolution.

The Analysed column shows the number of residues for which the sidechain conformation was analysed, and the total number of residues.

Mol	Chain	Analysed	Rotameric	Outliers	Percentiles	
1	A	270/299 (90%)	259 (96%)	11 (4%)	30	64
1	B	285/299 (95%)	271 (95%)	14 (5%)	25	57
1	C	289/299 (97%)	275 (95%)	14 (5%)	25	58
1	D	288/299 (96%)	270 (94%)	18 (6%)	18	46
1	E	261/299 (87%)	252 (97%)	9 (3%)	37	71
1	F	286/299 (96%)	272 (95%)	14 (5%)	25	57
1	G	287/299 (96%)	272 (95%)	15 (5%)	23	55
1	H	285/299 (95%)	271 (95%)	14 (5%)	25	57
All	All	2251/2392 (94%)	2142 (95%)	109 (5%)	25	58

All (109) residues with a non-rotameric sidechain are listed below:

Mol	Chain	Res	Type
1	F	23	LEU
1	F	25	GLN
1	F	64	MET
1	F	170	GLU
1	F	177	ARG
1	F	188	ASP
1	F	197	CYS
1	F	198	PHE
1	F	251	ASN
1	F	260	ARG
1	F	303	SER
1	F	309	GLU

*Continued on next page...*

*Continued from previous page...*

<b>Mol</b>	<b>Chain</b>	<b>Res</b>	<b>Type</b>
1	F	315	GLU
1	F	318	ARG
1	A	23	LEU
1	A	25	GLN
1	A	170	GLU
1	A	177	ARG
1	A	197	CYS
1	A	198	PHE
1	A	251	ASN
1	A	260	ARG
1	A	303	SER
1	A	315	GLU
1	A	318	ARG
1	B	23	LEU
1	B	25	GLN
1	B	65	ILE
1	B	170	GLU
1	B	177	ARG
1	B	188	ASP
1	B	197	CYS
1	B	198	PHE
1	B	251	ASN
1	B	260	ARG
1	B	303	SER
1	B	309	GLU
1	B	315	GLU
1	B	318	ARG
1	C	23	LEU
1	C	25	GLN
1	C	117	PHE
1	C	170	GLU
1	C	177	ARG
1	C	188	ASP
1	C	197	CYS
1	C	198	PHE
1	C	251	ASN
1	C	260	ARG
1	C	303	SER
1	C	309	GLU
1	C	315	GLU
1	C	318	ARG
1	D	23	LEU

*Continued on next page...*

*Continued from previous page...*

<b>Mol</b>	<b>Chain</b>	<b>Res</b>	<b>Type</b>
1	D	25	GLN
1	D	102	SER
1	D	105	SER
1	D	106	LEU
1	D	170	GLU
1	D	177	ARG
1	D	188	ASP
1	D	190	LEU
1	D	192	CYS
1	D	197	CYS
1	D	198	PHE
1	D	251	ASN
1	D	260	ARG
1	D	303	SER
1	D	309	GLU
1	D	315	GLU
1	D	318	ARG
1	E	23	LEU
1	E	25	GLN
1	E	170	GLU
1	E	177	ARG
1	E	197	CYS
1	E	198	PHE
1	E	251	ASN
1	E	260	ARG
1	E	303	SER
1	G	23	LEU
1	G	25	GLN
1	G	116	GLU
1	G	170	GLU
1	G	177	ARG
1	G	188	ASP
1	G	190	LEU
1	G	197	CYS
1	G	198	PHE
1	G	251	ASN
1	G	260	ARG
1	G	303	SER
1	G	309	GLU
1	G	315	GLU
1	G	318	ARG
1	H	23	LEU

*Continued on next page...*

*Continued from previous page...*

Mol	Chain	Res	Type
1	H	25	GLN
1	H	65	ILE
1	H	170	GLU
1	H	177	ARG
1	H	188	ASP
1	H	197	CYS
1	H	198	PHE
1	H	251	ASN
1	H	260	ARG
1	H	303	SER
1	H	309	GLU
1	H	315	GLU
1	H	318	ARG

Sometimes sidechains can be flipped to improve hydrogen bonding and reduce clashes. All (3) such sidechains are listed below:

Mol	Chain	Res	Type
1	D	104	GLN
1	E	66	HIS
1	G	66	HIS

### 5.3.3 RNA [i](#)

There are no RNA molecules in this entry.

## 5.4 Non-standard residues in protein, DNA, RNA chains [i](#)

There are no non-standard protein/DNA/RNA residues in this entry.

## 5.5 Carbohydrates [i](#)

There are no monosaccharides in this entry.

## 5.6 Ligand geometry [i](#)

4 ligands are modelled in this entry.

In the following table, the Counts columns list the number of bonds (or angles) for which Mogul statistics could be retrieved, the number of bonds (or angles) that are observed in the model and

the number of bonds (or angles) that are defined in the Chemical Component Dictionary. The Link column lists molecule types, if any, to which the group is linked. The Z score for a bond length (or angle) is the number of standard deviations the observed value is removed from the expected value. A bond length (or angle) with  $|Z| > 2$  is considered an outlier worth inspection. RMSZ is the root-mean-square of all Z scores of the bond lengths (or angles).

Mol	Type	Chain	Res	Link	Bond lengths			Bond angles		
					Counts	RMSZ	# Z  > 2	Counts	RMSZ	# Z  > 2
2	PLP	E	400	1	15,15,16	1.70	2 (13%)	20,22,23	2.09	7 (35%)
2	PLP	B	400	1	15,15,16	1.94	3 (20%)	20,22,23	1.89	4 (20%)
2	PLP	H	400	1	15,15,16	1.79	3 (20%)	20,22,23	1.98	5 (25%)
2	PLP	A	400	1	15,15,16	1.84	1 (6%)	20,22,23	3.44	4 (20%)

In the following table, the Chirals column lists the number of chiral outliers, the number of chiral centers analysed, the number of these observed in the model and the number defined in the Chemical Component Dictionary. Similar counts are reported in the Torsion and Rings columns. '-' means no outliers of that kind were identified.

Mol	Type	Chain	Res	Link	Chirals	Torsions	Rings
2	PLP	E	400	1	-	3/6/6/8	0/1/1/1
2	PLP	B	400	1	-	5/6/6/8	0/1/1/1
2	PLP	H	400	1	-	3/6/6/8	0/1/1/1
2	PLP	A	400	1	-	4/6/6/8	0/1/1/1

All (9) bond length outliers are listed below:

Mol	Chain	Res	Type	Atoms	Z	Observed(Å)	Ideal(Å)
2	A	400	PLP	O3-C3	-6.07	1.22	1.37
2	B	400	PLP	O3-C3	-5.76	1.23	1.37
2	H	400	PLP	O3-C3	-5.56	1.24	1.37
2	E	400	PLP	O3-C3	-5.11	1.25	1.37
2	B	400	PLP	C2-N1	2.61	1.38	1.33
2	H	400	PLP	C2-N1	2.20	1.38	1.33
2	B	400	PLP	C6-N1	2.17	1.39	1.34
2	E	400	PLP	P-O3P	-2.16	1.46	1.54
2	H	400	PLP	C6-N1	2.07	1.38	1.34

All (20) bond angle outliers are listed below:

Mol	Chain	Res	Type	Atoms	Z	Observed(°)	Ideal(°)
2	A	400	PLP	O4P-C5A-C5	13.18	134.47	109.35
2	H	400	PLP	O4P-C5A-C5	6.86	122.42	109.35

*Continued on next page...*

Continued from previous page...

Mol	Chain	Res	Type	Atoms	Z	Observed(°)	Ideal(°)
2	B	400	PLP	O4P-C5A-C5	5.98	120.75	109.35
2	E	400	PLP	O4P-C5A-C5	5.54	119.90	109.35
2	A	400	PLP	C5A-C5-C6	-5.16	110.89	119.37
2	E	400	PLP	O3P-P-O4P	-3.66	96.98	106.73
2	E	400	PLP	C4A-C4-C5	-3.23	117.60	120.94
2	A	400	PLP	C4A-C4-C5	3.09	124.12	120.94
2	A	400	PLP	O2P-P-O4P	-2.93	98.94	106.73
2	E	400	PLP	C2A-C2-C3	2.78	124.32	120.89
2	B	400	PLP	O4P-P-O1P	2.73	114.12	106.47
2	H	400	PLP	O3P-P-O2P	2.65	117.77	107.64
2	B	400	PLP	O3P-P-O2P	2.62	117.64	107.64
2	H	400	PLP	C6-C5-C4	2.43	120.07	118.16
2	H	400	PLP	O2P-P-O4P	-2.39	100.37	106.73
2	B	400	PLP	O2P-P-O4P	-2.20	100.88	106.73
2	E	400	PLP	O3-C3-C2	2.17	122.21	117.49
2	E	400	PLP	O3P-P-O2P	2.07	115.56	107.64
2	H	400	PLP	C4A-C4-C5	-2.06	118.81	120.94
2	E	400	PLP	C3-C4-C5	2.03	120.93	118.74

There are no chirality outliers.

All (15) torsion outliers are listed below:

Mol	Chain	Res	Type	Atoms
2	A	400	PLP	C4-C5-C5A-O4P
2	A	400	PLP	C6-C5-C5A-O4P
2	B	400	PLP	C4-C5-C5A-O4P
2	B	400	PLP	C5A-O4P-P-O1P
2	B	400	PLP	C5A-O4P-P-O2P
2	B	400	PLP	C5A-O4P-P-O3P
2	E	400	PLP	C5A-O4P-P-O2P
2	E	400	PLP	C5A-O4P-P-O3P
2	H	400	PLP	C5A-O4P-P-O1P
2	H	400	PLP	C5A-O4P-P-O2P
2	H	400	PLP	C5A-O4P-P-O3P
2	E	400	PLP	C5A-O4P-P-O1P
2	B	400	PLP	C6-C5-C5A-O4P
2	A	400	PLP	C5A-O4P-P-O1P
2	A	400	PLP	C5A-O4P-P-O2P

There are no ring outliers.

4 monomers are involved in 24 short contacts:



Mol	Chain	Res	Type	Clashes	Symm-Clashes
2	E	400	PLP	6	0
2	B	400	PLP	4	0
2	H	400	PLP	3	0
2	A	400	PLP	11	0

## 5.7 Other polymers [i](#)

There are no such residues in this entry.

## 5.8 Polymer linkage issues [i](#)

There are no chain breaks in this entry.

## 6 Fit of model and data

### 6.1 Protein, DNA and RNA chains

In the following table, the column labelled ‘#RSRZ > 2’ contains the number (and percentage) of RSRZ outliers, followed by percent RSRZ outliers for the chain as percentile scores relative to all X-ray entries and entries of similar resolution. The OWAB column contains the minimum, median, 95<sup>th</sup> percentile and maximum values of the occupancy-weighted average B-factor per residue. The column labelled ‘Q < 0.9’ lists the number of (and percentage) of residues with an average occupancy less than 0.9.

Mol	Chain	Analysed	<RSRZ>	#RSRZ>2	OWAB(Å <sup>2</sup> )	Q<0.9
1	A	314/346 (90%)	0.26	20 (6%) 19 15	25, 52, 96, 128	0
1	B	329/346 (95%)	0.09	6 (1%) 68 67	33, 54, 97, 125	0
1	C	335/346 (96%)	0.22	30 (8%) 9 7	33, 55, 101, 143	0
1	D	333/346 (96%)	0.32	22 (6%) 18 14	30, 55, 100, 128	0
1	E	302/346 (87%)	0.09	14 (4%) 32 29	30, 52, 94, 130	0
1	F	330/346 (95%)	0.05	6 (1%) 68 67	29, 53, 99, 127	0
1	G	331/346 (95%)	0.13	14 (4%) 36 32	33, 56, 100, 130	0
1	H	328/346 (94%)	0.54	46 (14%) 2 2	34, 57, 102, 130	0
All	All	2602/2768 (94%)	0.21	158 (6%) 21 17	25, 54, 100, 143	0

All (158) RSRZ outliers are listed below:

Mol	Chain	Res	Type	RSRZ
1	A	314	LEU	10.8
1	H	320	MET	8.6
1	A	320	MET	8.4
1	A	313	PRO	7.7
1	A	337	ALA	7.0
1	E	329	GLN	6.6
1	H	310	VAL	6.2
1	H	324	GLN	6.1
1	H	319	LEU	5.7
1	H	321	ALA	5.6
1	H	327	CYS	5.3
1	A	312	ASP	5.3
1	C	193	LEU	5.3
1	H	309	GLU	5.3
1	A	317	THR	5.2
1	D	97	SER	5.0

*Continued on next page...*

*Continued from previous page...*

<b>Mol</b>	<b>Chain</b>	<b>Res</b>	<b>Type</b>	<b>RSRZ</b>
1	A	321	ALA	5.0
1	H	323	HIS	4.9
1	H	279	VAL	4.8
1	E	186	ARG	4.8
1	H	318	ARG	4.8
1	H	195	CYS	4.8
1	C	128	HIS	4.7
1	C	314	LEU	4.7
1	C	198	PHE	4.6
1	D	94	LEU	4.6
1	H	322	ILE	4.6
1	A	338	LEU	4.6
1	A	315	GLU	4.5
1	H	329	GLN	4.4
1	A	336	LEU	4.4
1	H	330	GLU	4.4
1	C	126	THR	4.2
1	A	335	ARG	4.1
1	C	195	CYS	4.0
1	H	331	GLY	3.9
1	C	186	ARG	3.7
1	G	197	CYS	3.7
1	A	334	LYS	3.7
1	E	331	GLY	3.6
1	H	313	PRO	3.5
1	H	314	LEU	3.5
1	D	285	ARG	3.5
1	C	194	GLY	3.5
1	A	319	LEU	3.5
1	H	282	TYR	3.5
1	C	285	ARG	3.5
1	A	318	ARG	3.4
1	H	286	LEU	3.4
1	H	288	ILE	3.4
1	H	287	ALA	3.4
1	H	190	LEU	3.3
1	E	333	PHE	3.3
1	H	307	PRO	3.3
1	A	316	ALA	3.3
1	F	187	ILE	3.2
1	A	333	PHE	3.2
1	D	103	PHE	3.2

*Continued on next page...*

*Continued from previous page...*

<b>Mol</b>	<b>Chain</b>	<b>Res</b>	<b>Type</b>	<b>RSRZ</b>
1	G	282	TYR	3.1
1	C	188	ASP	3.1
1	H	308	GLU	3.1
1	G	337	ALA	3.1
1	H	197	CYS	3.1
1	C	125	LEU	3.1
1	H	328	ARG	3.0
1	B	291	PRO	3.0
1	C	313	PRO	3.0
1	B	186	ARG	3.0
1	H	103	PHE	2.9
1	D	99	ILE	2.9
1	D	196	CYS	2.9
1	H	325	GLU	2.8
1	C	321	ALA	2.8
1	G	97	SER	2.8
1	H	295	SER	2.8
1	H	303	SER	2.8
1	D	106	LEU	2.8
1	B	292	ASP	2.8
1	D	158	ILE	2.7
1	D	198	PHE	2.7
1	C	287	ALA	2.7
1	C	189	LYS	2.7
1	E	185	LEU	2.7
1	H	311	SER	2.7
1	G	310	VAL	2.7
1	H	294	VAL	2.6
1	H	285	ARG	2.6
1	E	196	CYS	2.6
1	H	312	ASP	2.6
1	H	315	GLU	2.6
1	C	121	GLN	2.6
1	C	131	MET	2.6
1	C	190	LEU	2.6
1	D	156	ALA	2.5
1	D	126	THR	2.5
1	H	188	ASP	2.5
1	G	130	GLY	2.5
1	H	122	ILE	2.5
1	F	189	LYS	2.5
1	D	195	CYS	2.5

*Continued on next page...*

*Continued from previous page...*

<b>Mol</b>	<b>Chain</b>	<b>Res</b>	<b>Type</b>	<b>RSRZ</b>
1	G	286	LEU	2.5
1	G	293	TYR	2.5
1	E	102	SER	2.5
1	H	304	TRP	2.5
1	C	317	THR	2.5
1	E	330	GLU	2.4
1	H	317	THR	2.4
1	C	191	ALA	2.4
1	H	293	TYR	2.4
1	E	130	GLY	2.4
1	D	129	TYR	2.4
1	H	266	SER	2.4
1	G	198	PHE	2.3
1	C	290	PRO	2.3
1	F	196	CYS	2.3
1	D	122	ILE	2.3
1	H	106	LEU	2.3
1	A	332	THR	2.3
1	F	128	HIS	2.3
1	F	198	PHE	2.3
1	A	195	CYS	2.3
1	E	332	THR	2.3
1	C	288	ILE	2.3
1	A	308	GLU	2.3
1	C	279	VAL	2.2
1	H	280	THR	2.2
1	C	187	ILE	2.2
1	H	136	TYR	2.2
1	D	98	GLY	2.2
1	D	172	LEU	2.2
1	E	195	CYS	2.2
1	E	241	GLU	2.2
1	F	293	TYR	2.2
1	H	333	PHE	2.2
1	G	134	GLU	2.2
1	D	282	TYR	2.2
1	H	326	LYS	2.2
1	E	308	GLU	2.2
1	D	182	ALA	2.1
1	D	96	GLY	2.1
1	C	289	LEU	2.1
1	C	122	ILE	2.1

*Continued on next page...*

*Continued from previous page...*

Mol	Chain	Res	Type	RSRZ
1	C	130	GLY	2.1
1	C	192	CYS	2.1
1	G	338	LEU	2.1
1	B	4	ASP	2.1
1	G	121	GLN	2.1
1	B	183	LYS	2.1
1	D	286	LEU	2.1
1	A	278	LYS	2.1
1	D	95	LYS	2.1
1	D	130	GLY	2.0
1	G	289	LEU	2.0
1	B	52	ILE	2.0
1	G	95	LYS	2.0
1	C	282	TYR	2.0
1	C	196	CYS	2.0
1	E	106	LEU	2.0

## 6.2 Non-standard residues in protein, DNA, RNA chains [i](#)

There are no non-standard protein/DNA/RNA residues in this entry.

## 6.3 Carbohydrates [i](#)

There are no monosaccharides in this entry.

## 6.4 Ligands [i](#)

In the following table, the Atoms column lists the number of modelled atoms in the group and the number defined in the chemical component dictionary. The B-factors column lists the minimum, median, 95<sup>th</sup> percentile and maximum values of B factors of atoms in the group. The column labelled 'Q< 0.9' lists the number of atoms with occupancy less than 0.9.

Mol	Type	Chain	Res	Atoms	RSCC	RSR	B-factors(Å <sup>2</sup> )	Q<0.9
2	PLP	H	400	15/16	0.93	0.16	41,54,63,77	0
2	PLP	B	400	15/16	0.95	0.19	26,47,58,68	0
2	PLP	A	400	15/16	0.96	0.15	22,32,54,58	0
2	PLP	E	400	15/16	0.98	0.14	28,35,53,54	0

## 6.5 Other polymers [i](#)

There are no such residues in this entry.