



# Full wwPDB X-ray Structure Validation Report ⓘ

Dec 3, 2023 – 10:22 am GMT

PDB ID : 1H60  
Title : Structure of Pentaerythritol Tetranitrate Reductase in complex with progesterone  
Authors : Barna, T.M.; Moody, P.C.E.  
Deposited on : 2001-06-04  
Resolution : 1.60 Å(reported)

This is a Full wwPDB X-ray Structure Validation Report for a publicly released PDB entry.

We welcome your comments at [validation@mail.wwpdb.org](mailto:validation@mail.wwpdb.org)

A user guide is available at

<https://www.wwpdb.org/validation/2017/XrayValidationReportHelp>

with specific help available everywhere you see the ⓘ symbol.

The types of validation reports are described at

<http://www.wwpdb.org/validation/2017/FAQs#types>.

---

The following versions of software and data (see [references ⓘ](#)) were used in the production of this report:

MolProbity : 4.02b-467  
Mogul : 1.8.4, CSD as541be (2020)  
Xtriage (Phenix) : 1.13  
EDS : 2.36  
buster-report : 1.1.7 (2018)  
Percentile statistics : 20191225.v01 (using entries in the PDB archive December 25th 2019)  
Refmac : 5.8.0158  
CCP4 : 7.0.044 (Gargrove)  
Ideal geometry (proteins) : Engh & Huber (2001)  
Ideal geometry (DNA, RNA) : Parkinson et al. (1996)  
Validation Pipeline (wwPDB-VP) : 2.36

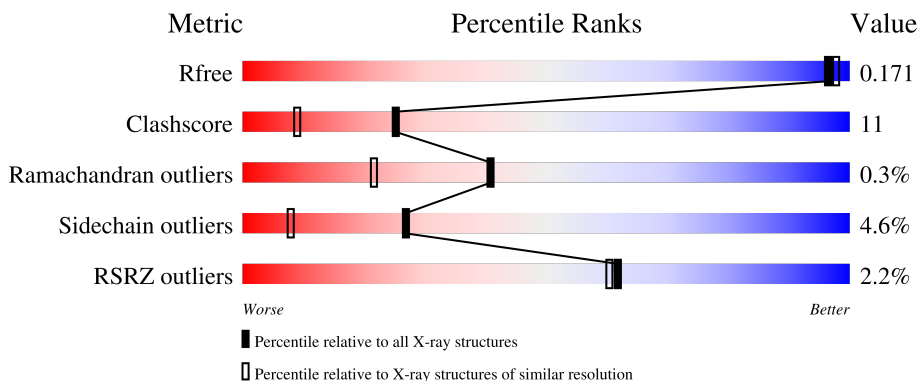
# 1 Overall quality at a glance

The following experimental techniques were used to determine the structure:

*X-RAY DIFFRACTION*

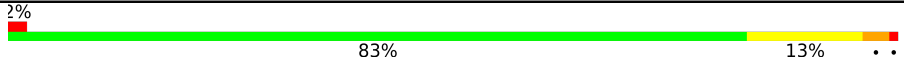
The reported resolution of this entry is 1.60 Å.

Percentile scores (ranging between 0-100) for global validation metrics of the entry are shown in the following graphic. The table shows the number of entries on which the scores are based.



Metric	Whole archive (#Entries)	Similar resolution (#Entries, resolution range(Å))
$R_{free}$	130704	3398 (1.60-1.60)
Clashscore	141614	3665 (1.60-1.60)
Ramachandran outliers	138981	3564 (1.60-1.60)
Sidechain outliers	138945	3563 (1.60-1.60)
RSRZ outliers	127900	3321 (1.60-1.60)

The table below summarises the geometric issues observed across the polymeric chains and their fit to the electron density. The red, orange, yellow and green segments of the lower bar indicate the fraction of residues that contain outliers for  $\geq 3$ , 2, 1 and 0 types of geometric quality criteria respectively. A grey segment represents the fraction of residues that are not modelled. The numeric value for each fraction is indicated below the corresponding segment, with a dot representing fractions  $\leq 5\%$ . The upper red bar (where present) indicates the fraction of residues that have poor fit to the electron density. The numeric value is given above the bar.

Mol	Chain	Length	Quality of chain
1	A	364	

The following table lists non-polymeric compounds, carbohydrate monomers and non-standard residues in protein, DNA, RNA chains that are outliers for geometric or electron-density-fit criteria:

Mol	Type	Chain	Res	Chirality	Geometry	Clashes	Electron density
2	FMN	A	401	-	-	X	-

## 2 Entry composition [i](#)

There are 4 unique types of molecules in this entry. The entry contains 3499 atoms, of which 0 are hydrogens and 0 are deuteriums.

In the tables below, the ZeroOcc column contains the number of atoms modelled with zero occupancy, the AltConf column contains the number of residues with at least one atom in alternate conformation and the Trace column contains the number of residues modelled with at most 2 atoms.

- Molecule 1 is a protein called PENTAERYTHRITOL TETRANITRATE REDUCTASE.

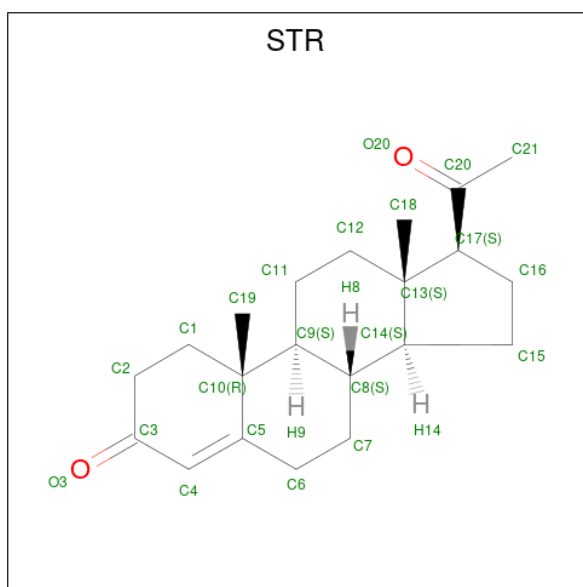
Mol	Chain	Residues	Atoms					ZeroOcc	AltConf	Trace
			Total	C	N	O	S			
1	A	364	2778	1737	502	535	4	0	0	0

- Molecule 2 is FLAVIN MONONUCLEOTIDE (three-letter code: FMN) (formula: C<sub>17</sub>H<sub>21</sub>N<sub>4</sub>O<sub>9</sub>P).



Mol	Chain	Residues	Atoms					ZeroOcc	AltConf
			Total	C	N	O	P		
2	A	1	31	17	4	9	1	0	0

- Molecule 3 is PROGESTERONE (three-letter code: STR) (formula: C<sub>21</sub>H<sub>30</sub>O<sub>2</sub>).



Mol	Chain	Residues	Atoms		ZeroOcc	AltConf
3	A	1	Total	C O	0	0
			23	21 2		

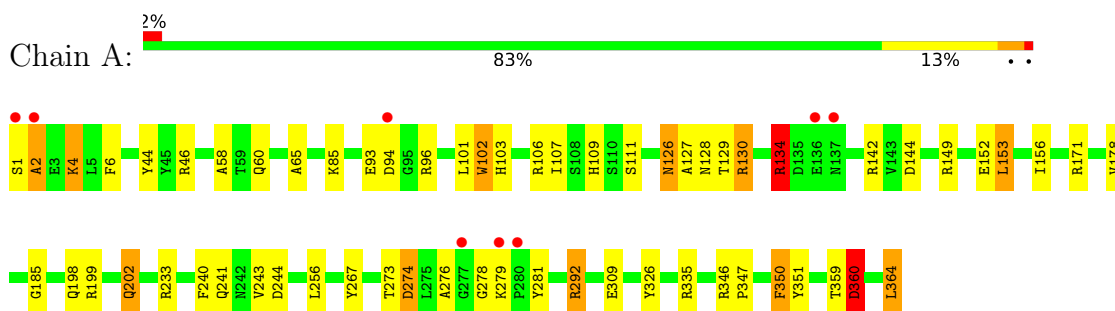
- Molecule 4 is water.

Mol	Chain	Residues	Atoms		ZeroOcc	AltConf
4	A	667	Total	O	0	0
			667	667		

### 3 Residue-property plots [i](#)

These plots are drawn for all protein, RNA, DNA and oligosaccharide chains in the entry. The first graphic for a chain summarises the proportions of the various outlier classes displayed in the second graphic. The second graphic shows the sequence view annotated by issues in geometry and electron density. Residues are color-coded according to the number of geometric quality criteria for which they contain at least one outlier: green = 0, yellow = 1, orange = 2 and red = 3 or more. A red dot above a residue indicates a poor fit to the electron density ( $RSRZ > 2$ ). Stretches of 2 or more consecutive residues without any outlier are shown as a green connector. Residues present in the sample, but not in the model, are shown in grey.

- Molecule 1: PENTAERYTHRITOL TETRANITRATE REDUCTASE



## 4 Data and refinement statistics

Property	Value	Source
Space group	P 21 21 21	Depositor
Cell constants a, b, c, $\alpha$ , $\beta$ , $\gamma$	56.69Å 68.67Å 88.66Å 90.00° 90.00° 90.00°	Depositor
Resolution (Å)	31.00 – 1.60 31.13 – 1.60	Depositor EDS
% Data completeness (in resolution range)	97.7 (31.00-1.60) 97.8 (31.13-1.60)	Depositor EDS
$R_{merge}$	0.04	Depositor
$R_{sym}$	(Not available)	Depositor
$\langle I/\sigma(I) \rangle$ <sup>1</sup>	7.47 (at 1.60Å)	Xtrriage
Refinement program	CNS 1.0	Depositor
R, $R_{free}$	0.172 , 0.182 0.160 , 0.171	Depositor DCC
$R_{free}$ test set	2248 reflections (4.95%)	wwPDB-VP
Wilson B-factor (Å <sup>2</sup> )	13.8	Xtrriage
Anisotropy	0.055	Xtrriage
Bulk solvent $k_{sol}$ (e/Å <sup>3</sup> ), $B_{sol}$ (Å <sup>2</sup> )	0.28 , 61.7	EDS
L-test for twinning <sup>2</sup>	$\langle  L  \rangle = 0.49$ , $\langle L^2 \rangle = 0.32$	Xtrriage
Estimated twinning fraction	No twinning to report.	Xtrriage
$F_o, F_c$ correlation	0.96	EDS
Total number of atoms	3499	wwPDB-VP
Average B, all atoms (Å <sup>2</sup> )	16.0	wwPDB-VP

Xtrriage's analysis on translational NCS is as follows: *The largest off-origin peak in the Patterson function is 5.85% of the height of the origin peak. No significant pseudotranslation is detected.*

<sup>1</sup>Intensities estimated from amplitudes.

<sup>2</sup>Theoretical values of  $\langle |L| \rangle$ ,  $\langle L^2 \rangle$  for acentric reflections are 0.5, 0.333 respectively for untwinned datasets, and 0.375, 0.2 for perfectly twinned datasets.

## 5 Model quality i

### 5.1 Standard geometry i

Bond lengths and bond angles in the following residue types are not validated in this section: FMN, STR

The Z score for a bond length (or angle) is the number of standard deviations the observed value is removed from the expected value. A bond length (or angle) with  $|Z| > 5$  is considered an outlier worth inspection. RMSZ is the root-mean-square of all Z scores of the bond lengths (or angles).

Mol	Chain	Bond lengths		Bond angles	
		RMSZ	# Z  >5	RMSZ	# Z  >5
1	A	0.50	1/2835 (0.0%)	1.41	32/3849 (0.8%)

All (1) bond length outliers are listed below:

Mol	Chain	Res	Type	Atoms	Z	Observed(Å)	Ideal(Å)
1	A	360	ASP	CA-CB	5.06	1.65	1.53

All (32) bond angle outliers are listed below:

Mol	Chain	Res	Type	Atoms	Z	Observed(°)	Ideal(°)
1	A	134	ARG	CD-NE-CZ	36.39	174.54	123.60
1	A	360	ASP	CB-CG-OD1	-16.39	103.55	118.30
1	A	360	ASP	CA-CB-CG	-11.63	87.80	113.40
1	A	134	ARG	NE-CZ-NH2	-10.66	114.97	120.30
1	A	171	ARG	NE-CZ-NH1	10.38	125.49	120.30
1	A	276	ALA	O-C-N	-9.70	106.71	123.20
1	A	359	THR	C-N-CA	9.07	144.39	121.70
1	A	134	ARG	NE-CZ-NH1	9.06	124.83	120.30
1	A	267	TYR	CB-CG-CD1	8.86	126.31	121.00
1	A	130	ARG	NE-CZ-NH2	-8.80	115.90	120.30
1	A	233	ARG	NE-CZ-NH2	-8.52	116.04	120.30
1	A	276	ALA	CA-C-N	7.86	131.92	116.20
1	A	134	ARG	CG-CD-NE	7.76	128.10	111.80
1	A	96	ARG	NE-CZ-NH1	-7.72	116.44	120.30
1	A	350	PHE	CB-CG-CD2	-7.04	115.87	120.80
1	A	276	ALA	C-N-CA	-7.01	107.57	122.30
1	A	233	ARG	NE-CZ-NH1	6.99	123.79	120.30
1	A	360	ASP	CB-CG-OD2	6.75	124.37	118.30
1	A	46	ARG	CD-NE-CZ	6.62	132.86	123.60
1	A	244	ASP	CB-CG-OD1	6.59	124.23	118.30

*Continued on next page...*

Continued from previous page...

Mol	Chain	Res	Type	Atoms	Z	Observed(°)	Ideal(°)
1	A	171	ARG	NE-CZ-NH2	-6.54	117.03	120.30
1	A	281	TYR	CB-CG-CD2	-6.05	117.37	121.00
1	A	199	ARG	NE-CZ-NH2	-5.95	117.32	120.30
1	A	281	TYR	CB-CG-CD1	5.84	124.50	121.00
1	A	364	LEU	CA-C-O	-5.78	107.97	120.10
1	A	46	ARG	NE-CZ-NH2	-5.62	117.49	120.30
1	A	335	ARG	NE-CZ-NH1	-5.50	117.55	120.30
1	A	130	ARG	CD-NE-CZ	-5.46	115.95	123.60
1	A	292	ARG	NE-CZ-NH2	-5.37	117.61	120.30
1	A	149	ARG	NE-CZ-NH1	-5.37	117.62	120.30
1	A	44	TYR	CA-CB-CG	5.35	123.56	113.40
1	A	267	TYR	CA-CB-CG	5.35	123.56	113.40

There are no chirality outliers.

There are no planarity outliers.

## 5.2 Too-close contacts [i](#)

In the following table, the Non-H and H(model) columns list the number of non-hydrogen atoms and hydrogen atoms in the chain respectively. The H(added) column lists the number of hydrogen atoms added and optimized by MolProbity. The Clashes column lists the number of clashes within the asymmetric unit, whereas Symm-Clashes lists symmetry-related clashes.

Mol	Chain	Non-H	H(model)	H(added)	Clashes	Symm-Clashes
1	A	2778	0	2730	45	0
2	A	31	0	19	14	0
3	A	23	0	30	3	0
4	A	667	0	0	11	0
All	All	3499	0	2779	60	0

The all-atom clashscore is defined as the number of clashes found per 1000 atoms (including hydrogen atoms). The all-atom clashscore for this structure is 11.

All (60) close contacts within the same asymmetric unit are listed below, sorted by their clash magnitude.

Atom-1	Atom-2	Interatomic distance (Å)	Clash overlap (Å)
2:A:401:FMN:C4'	2:A:401:FMN:C5'	1.78	1.61
3:A:500:STR:C21	3:A:500:STR:C20	1.76	1.60
2:A:401:FMN:C1'	2:A:401:FMN:N10	1.73	1.45
2:A:401:FMN:C5'	2:A:401:FMN:C3'	2.20	1.19

Continued on next page...



*Continued from previous page...*

Atom-1	Atom-2	Interatomic distance (Å)	Clash overlap (Å)
2:A:401:FMN:H3'	2:A:401:FMN:H5'1	1.43	1.01
2:A:401:FMN:C5'	2:A:401:FMN:H3'	1.94	0.97
1:A:346:ARG:HH22	1:A:360:ASP:HB3	1.30	0.96
1:A:126:ASN:HD22	1:A:128:ASN:H	1.12	0.92
1:A:202:GLN:H	1:A:202:GLN:HE21	1.03	0.91
2:A:401:FMN:C1'	2:A:401:FMN:C10	2.50	0.89
1:A:60:GLN:HE21	1:A:102:TRP:HE1	1.25	0.80
1:A:240:PHE:O	1:A:243:VAL:HG22	1.85	0.76
3:A:500:STR:H213	4:A:2328:HOH:O	1.85	0.75
1:A:351:TYR:CZ	2:A:401:FMN:HM72	2.21	0.75
1:A:2:ALA:HB3	1:A:6:PHE:HE2	1.53	0.73
1:A:241:GLN:HG2	4:A:2539:HOH:O	1.87	0.72
1:A:351:TYR:CE1	2:A:401:FMN:HM72	2.26	0.71
2:A:401:FMN:C5'	2:A:401:FMN:O4'	2.38	0.71
2:A:401:FMN:N10	2:A:401:FMN:C2'	2.51	0.70
1:A:134:ARG:HD3	4:A:2081:HOH:O	1.92	0.69
1:A:2:ALA:HB1	1:A:309:GLU:OE2	1.93	0.69
1:A:202:GLN:H	1:A:202:GLN:NE2	1.86	0.67
1:A:126:ASN:ND2	1:A:128:ASN:H	1.90	0.66
2:A:401:FMN:C1'	2:A:401:FMN:C9A	2.68	0.65
1:A:185:GLY:HA2	1:A:243:VAL:HG21	1.79	0.64
3:A:500:STR:C21	3:A:500:STR:C17	2.78	0.61
1:A:2:ALA:HB3	1:A:6:PHE:CE2	2.36	0.60
1:A:274:ASP:HB2	4:A:2537:HOH:O	2.03	0.58
1:A:346:ARG:NH2	1:A:360:ASP:HB3	2.10	0.57
1:A:60:GLN:NE2	1:A:102:TRP:HE1	1.99	0.57
1:A:153:LEU:HA	1:A:156:ILE:HD13	1.87	0.57
1:A:273:THR:HG22	1:A:278:GLY:HA3	1.86	0.56
1:A:241:GLN:HB3	4:A:2481:HOH:O	2.09	0.53
1:A:152:GLU:O	1:A:156:ILE:HD12	2.09	0.53
1:A:109:HIS:CD2	1:A:111:SER:H	2.27	0.52
1:A:93:GLU:O	1:A:94:ASP:HB2	2.09	0.51
1:A:346:ARG:HH22	1:A:360:ASP:CB	2.15	0.51
1:A:202:GLN:HE21	1:A:202:GLN:N	1.88	0.51
1:A:107:ILE:HD13	1:A:127:ALA:HB1	1.94	0.50
2:A:401:FMN:C4'	2:A:401:FMN:O5'	2.43	0.50
1:A:347:PRO:HA	1:A:350:PHE:CE1	2.48	0.47
1:A:106:ARG:HG3	1:A:127:ALA:HB2	1.97	0.47
1:A:101:LEU:HD12	1:A:178:VAL:HG11	1.98	0.46
2:A:401:FMN:C1'	2:A:401:FMN:N1	2.77	0.46
1:A:1:SER:O	1:A:2:ALA:O	2.34	0.45

*Continued on next page...*

Continued from previous page...

Atom-1	Atom-2	Interatomic distance (Å)	Clash overlap (Å)
1:A:4:LYS:NZ	4:A:2009:HOH:O	2.50	0.45
1:A:107:ILE:HD13	1:A:127:ALA:CB	2.46	0.45
1:A:109:HIS:HD2	1:A:111:SER:H	1.62	0.45
1:A:58:ALA:HB1	1:A:102:TRP:CD2	2.52	0.45
2:A:401:FMN:N1	2:A:401:FMN:H1'1	2.33	0.44
1:A:292:ARG:NH1	4:A:2562:HOH:O	2.50	0.44
1:A:107:ILE:HD12	1:A:129:THR:HG21	1.99	0.43
1:A:85:LYS:HE2	4:A:2236:HOH:O	2.18	0.43
1:A:292:ARG:NH2	4:A:2562:HOH:O	2.50	0.43
1:A:130:ARG:HD2	1:A:144:ASP:OD1	2.20	0.42
1:A:243:VAL:HG23	1:A:243:VAL:O	2.18	0.42
1:A:198:GLN:NE2	4:A:2420:HOH:O	2.53	0.41
1:A:65:ALA:HB1	1:A:103:HIS:HA	2.02	0.41
1:A:202:GLN:NE2	4:A:2432:HOH:O	2.53	0.41
1:A:347:PRO:HA	1:A:350:PHE:CD1	2.56	0.41

There are no symmetry-related clashes.

## 5.3 Torsion angles [i](#)

### 5.3.1 Protein backbone [i](#)

In the following table, the Percentiles column shows the percent Ramachandran outliers of the chain as a percentile score with respect to all X-ray entries followed by that with respect to entries of similar resolution.

The Analysed column shows the number of residues for which the backbone conformation was analysed, and the total number of residues.

Mol	Chain	Analysed	Favoured	Allowed	Outliers	Percentiles
1	A	362/364 (100%)	351 (97%)	10 (3%)	1 (0%)	41 21

All (1) Ramachandran outliers are listed below:

Mol	Chain	Res	Type
1	A	2	ALA

### 5.3.2 Protein sidechains [i](#)

In the following table, the Percentiles column shows the percent sidechain outliers of the chain as a percentile score with respect to all X-ray entries followed by that with respect to entries of similar resolution.

The Analysed column shows the number of residues for which the sidechain conformation was analysed, and the total number of residues.

Mol	Chain	Analysed	Rotameric	Outliers	Percentiles
1	A	284/284 (100%)	271 (95%)	13 (5%)	27 8

All (13) residues with a non-rotameric sidechain are listed below:

Mol	Chain	Res	Type
1	A	4	LYS
1	A	102	TRP
1	A	126	ASN
1	A	134	ARG
1	A	142	ARG
1	A	153	LEU
1	A	202	GLN
1	A	256	LEU
1	A	274	ASP
1	A	279	LYS
1	A	326	TYR
1	A	360	ASP
1	A	364	LEU

Sometimes sidechains can be flipped to improve hydrogen bonding and reduce clashes. All (5) such sidechains are listed below:

Mol	Chain	Res	Type
1	A	60	GLN
1	A	109	HIS
1	A	126	ASN
1	A	198	GLN
1	A	202	GLN

### 5.3.3 RNA [i](#)

There are no RNA molecules in this entry.

## 5.4 Non-standard residues in protein, DNA, RNA chains [i](#)

There are no non-standard protein/DNA/RNA residues in this entry.

## 5.5 Carbohydrates [i](#)

There are no monosaccharides in this entry.

## 5.6 Ligand geometry [i](#)

2 ligands are modelled in this entry.

In the following table, the Counts columns list the number of bonds (or angles) for which Mogul statistics could be retrieved, the number of bonds (or angles) that are observed in the model and the number of bonds (or angles) that are defined in the Chemical Component Dictionary. The Link column lists molecule types, if any, to which the group is linked. The Z score for a bond length (or angle) is the number of standard deviations the observed value is removed from the expected value. A bond length (or angle) with  $|Z| > 2$  is considered an outlier worth inspection. RMSZ is the root-mean-square of all Z scores of the bond lengths (or angles).

Mol	Type	Chain	Res	Link	Bond lengths			Bond angles		
					Counts	RMSZ	# Z  > 2	Counts	RMSZ	# Z  > 2
3	STR	A	500	-	26,26,26	4.75	13 (50%)	42,42,42	3.23	21 (50%)
2	FMN	A	401	-	33,33,33	5.65	21 (63%)	48,50,50	3.74	15 (31%)

In the following table, the Chirals column lists the number of chiral outliers, the number of chiral centers analysed, the number of these observed in the model and the number defined in the Chemical Component Dictionary. Similar counts are reported in the Torsion and Rings columns. '-' means no outliers of that kind were identified.

Mol	Type	Chain	Res	Link	Chirals	Torsions	Rings
3	STR	A	500	-	-	0/4/62/62	0/4/4/4
2	FMN	A	401	-	-	2/18/18/18	0/3/3/3

All (34) bond length outliers are listed below:

Mol	Chain	Res	Type	Atoms	Z	Observed(Å)	Ideal(Å)
2	A	401	FMN	C5'-C4'	18.93	1.78	1.51
3	A	500	STR	C21-C20	10.50	1.76	1.49
3	A	500	STR	C13-C14	10.01	1.74	1.55
2	A	401	FMN	C1'-N10	9.97	1.73	1.48
3	A	500	STR	C17-C20	9.65	1.65	1.51
2	A	401	FMN	C9-C9A	9.61	1.55	1.39

*Continued on next page...*

Continued from previous page...

Mol	Chain	Res	Type	Atoms	Z	Observed(Å)	Ideal(Å)
2	A	401	FMN	C4'-C3'	9.54	1.71	1.53
2	A	401	FMN	O4'-C4'	8.50	1.61	1.43
3	A	500	STR	C1-C2	8.46	1.70	1.53
2	A	401	FMN	C9-C8	8.29	1.51	1.39
2	A	401	FMN	O5'-C5'	-7.92	1.14	1.44
3	A	500	STR	C12-C11	6.91	1.68	1.53
3	A	500	STR	O3-C3	6.13	1.33	1.23
2	A	401	FMN	O3'-C3'	6.04	1.57	1.43
3	A	500	STR	C8-C14	-5.55	1.43	1.53
2	A	401	FMN	C9A-N10	-5.21	1.32	1.41
2	A	401	FMN	C2'-C3'	5.04	1.63	1.53
3	A	500	STR	C8-C9	4.60	1.62	1.53
3	A	500	STR	C10-C5	4.59	1.61	1.52
2	A	401	FMN	C6-C7	4.58	1.46	1.39
2	A	401	FMN	C8M-C8	-4.49	1.42	1.51
3	A	500	STR	O20-C20	-3.96	1.11	1.21
2	A	401	FMN	C6-C5A	3.58	1.45	1.40
3	A	500	STR	C13-C17	-3.22	1.50	1.56
3	A	500	STR	C12-C13	-3.19	1.48	1.54
2	A	401	FMN	C5A-N5	-3.17	1.33	1.39
2	A	401	FMN	O2-C2	-2.82	1.19	1.24
2	A	401	FMN	C2-N3	2.73	1.45	1.39
3	A	500	STR	C2-C3	2.57	1.55	1.49
2	A	401	FMN	C4A-N5	2.39	1.35	1.30
2	A	401	FMN	C10-N1	2.38	1.38	1.33
2	A	401	FMN	C2-N1	-2.34	1.31	1.36
2	A	401	FMN	O2'-C2'	2.21	1.48	1.43
2	A	401	FMN	C4A-C4	2.07	1.52	1.44

All (36) bond angle outliers are listed below:

Mol	Chain	Res	Type	Atoms	Z	Observed(°)	Ideal(°)
2	A	401	FMN	C5'-C4'-C3'	-17.63	78.15	112.20
2	A	401	FMN	O4'-C4'-C5'	-9.30	89.01	109.92
2	A	401	FMN	O4'-C4'-C3'	-9.23	86.65	109.10
3	A	500	STR	C18-C13-C12	8.64	124.23	110.59
2	A	401	FMN	P-O5'-C5'	6.97	137.49	118.30
3	A	500	STR	C7-C8-C9	-6.45	102.49	110.49
3	A	500	STR	C16-C17-C13	5.79	109.36	104.21
3	A	500	STR	C21-C20-C17	-5.66	109.33	117.56
3	A	500	STR	C12-C13-C14	-5.33	99.00	107.27
2	A	401	FMN	C9A-N10-C10	5.28	128.99	120.77

Continued on next page...

Continued from previous page...

Mol	Chain	Res	Type	Atoms	Z	Observed(°)	Ideal(°)
3	A	500	STR	C15-C14-C13	-4.85	98.00	103.84
3	A	500	STR	O3-C3-C2	-4.55	112.15	121.57
3	A	500	STR	C2-C3-C4	4.49	123.65	116.74
3	A	500	STR	C5-C4-C3	-4.40	116.58	123.67
2	A	401	FMN	C4A-C10-N10	-4.39	110.06	116.48
3	A	500	STR	C12-C13-C17	-4.15	111.03	116.10
3	A	500	STR	C14-C8-C9	-4.15	103.53	109.09
3	A	500	STR	O20-C20-C21	3.40	127.18	121.15
3	A	500	STR	C10-C5-C4	3.23	127.91	122.68
3	A	500	STR	C16-C17-C20	-3.18	109.37	114.23
2	A	401	FMN	N10-C10-N1	2.99	126.94	118.35
3	A	500	STR	C1-C10-C9	-2.91	104.66	108.73
2	A	401	FMN	O3'-C3'-C2'	-2.90	101.82	108.81
2	A	401	FMN	C8M-C8-C9	-2.82	114.28	119.49
3	A	500	STR	C6-C5-C4	-2.78	116.22	120.87
2	A	401	FMN	O3P-P-O2P	2.76	118.17	107.64
3	A	500	STR	C19-C10-C1	2.75	113.77	109.43
3	A	500	STR	C7-C8-C14	-2.63	107.60	112.08
2	A	401	FMN	C5A-C9A-N10	-2.57	115.30	117.95
2	A	401	FMN	O4-C4-N3	2.46	124.83	120.12
3	A	500	STR	C17-C13-C14	-2.43	97.13	99.72
2	A	401	FMN	C4-N3-C2	2.40	130.08	125.64
3	A	500	STR	C2-C1-C10	-2.40	108.94	113.45
3	A	500	STR	C6-C7-C8	2.28	115.81	111.69
2	A	401	FMN	C7M-C7-C6	-2.11	115.59	119.49
2	A	401	FMN	C10-N1-C2	2.06	121.03	116.90

There are no chirality outliers.

All (2) torsion outliers are listed below:

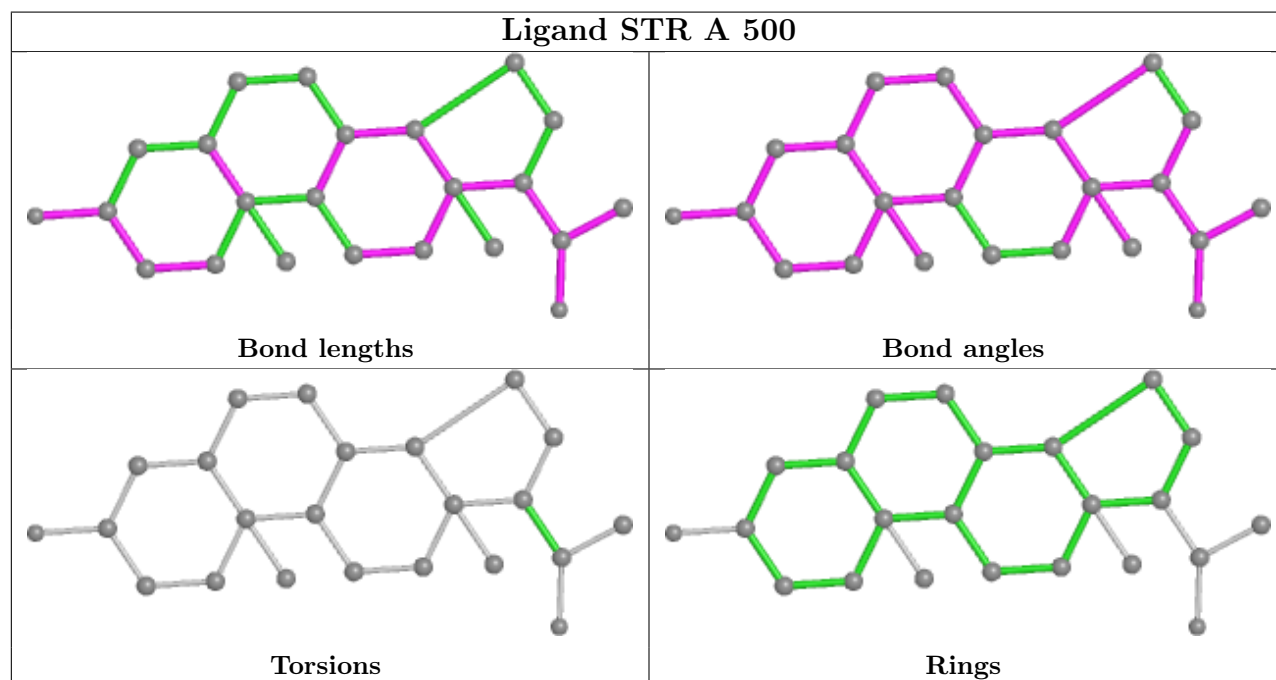
Mol	Chain	Res	Type	Atoms
2	A	401	FMN	O3'-C3'-C4'-C5'
2	A	401	FMN	C4'-C5'-O5'-P

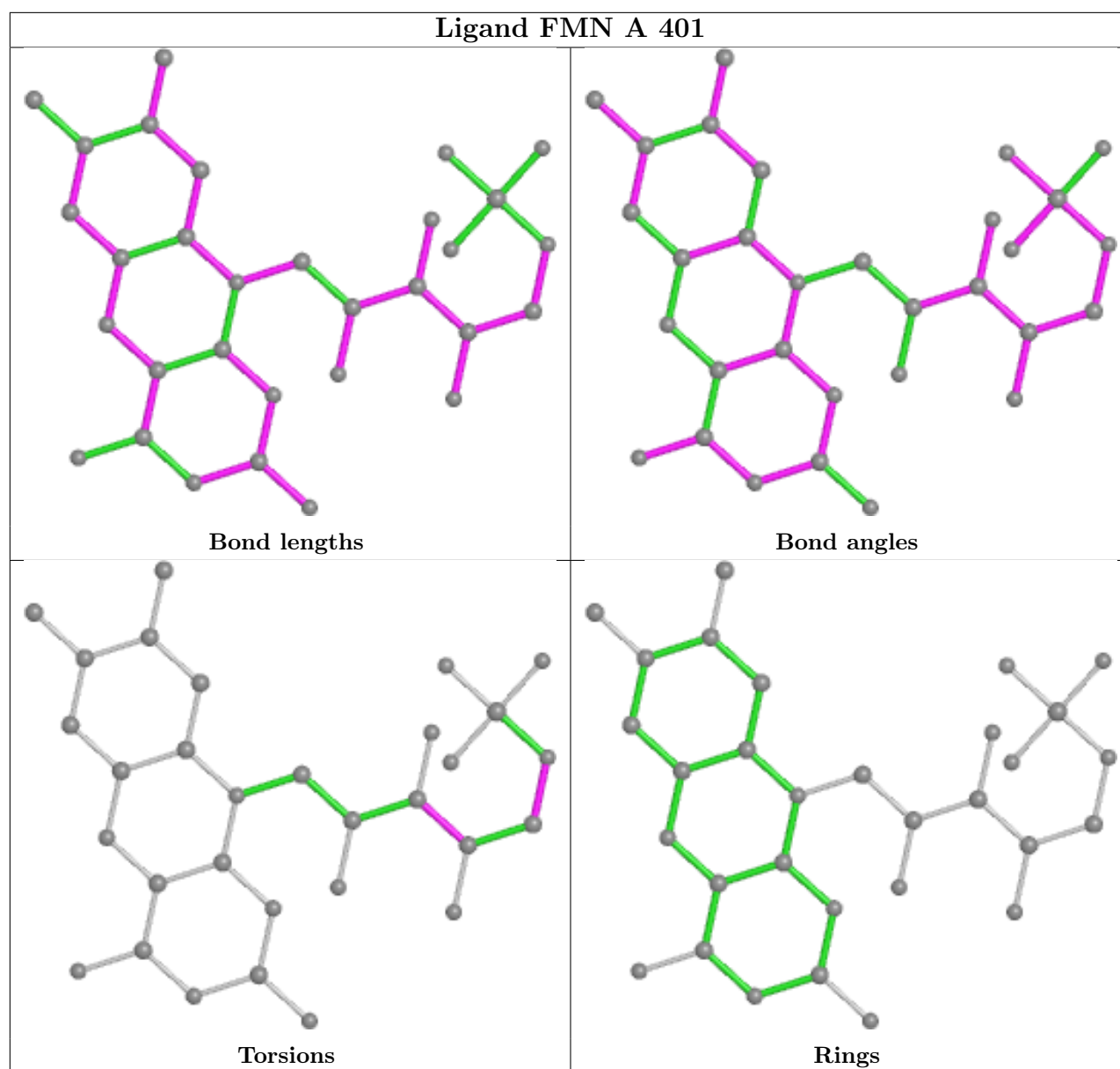
There are no ring outliers.

2 monomers are involved in 17 short contacts:

Mol	Chain	Res	Type	Clashes	Symm-Clashes
3	A	500	STR	3	0
2	A	401	FMN	14	0

The following is a two-dimensional graphical depiction of Mogul quality analysis of bond lengths, bond angles, torsion angles, and ring geometry for all instances of the Ligand of Interest. In addition, ligands with molecular weight > 250 and outliers as shown on the validation Tables will also be included. For torsion angles, if less than 5% of the Mogul distribution of torsion angles is within 10 degrees of the torsion angle in question, then that torsion angle is considered an outlier. Any bond that is central to one or more torsion angles identified as an outlier by Mogul will be highlighted in the graph. For rings, the root-mean-square deviation (RMSD) between the ring in question and similar rings identified by Mogul is calculated over all ring torsion angles. If the average RMSD is greater than 60 degrees and the minimal RMSD between the ring in question and any Mogul-identified rings is also greater than 60 degrees, then that ring is considered an outlier. The outliers are highlighted in purple. The color gray indicates Mogul did not find sufficient equivalents in the CSD to analyse the geometry.





## 5.7 Other polymers [\(i\)](#)

There are no such residues in this entry.

## 5.8 Polymer linkage issues [\(i\)](#)

There are no chain breaks in this entry.



## 6 Fit of model and data [i](#)

### 6.1 Protein, DNA and RNA chains [i](#)

In the following table, the column labelled ‘#RSRZ> 2’ contains the number (and percentage) of RSRZ outliers, followed by percent RSRZ outliers for the chain as percentile scores relative to all X-ray entries and entries of similar resolution. The OWAB column contains the minimum, median, 95<sup>th</sup> percentile and maximum values of the occupancy-weighted average B-factor per residue. The column labelled ‘Q< 0.9’ lists the number of (and percentage) of residues with an average occupancy less than 0.9.

Mol	Chain	Analysed	<RSRZ>	#RSRZ>2	OWAB(Å <sup>2</sup> )	Q<0.9
1	A	364/364 (100%)	0.19	8 (2%) 62 60	6, 11, 22, 88	0

All (8) RSRZ outliers are listed below:

Mol	Chain	Res	Type	RSRZ
1	A	1	SER	11.7
1	A	2	ALA	7.1
1	A	277	GLY	4.2
1	A	279	LYS	3.0
1	A	280	PRO	2.9
1	A	94	ASP	2.8
1	A	136	GLU	2.2
1	A	137	ASN	2.2

### 6.2 Non-standard residues in protein, DNA, RNA chains [i](#)

There are no non-standard protein/DNA/RNA residues in this entry.

### 6.3 Carbohydrates [i](#)

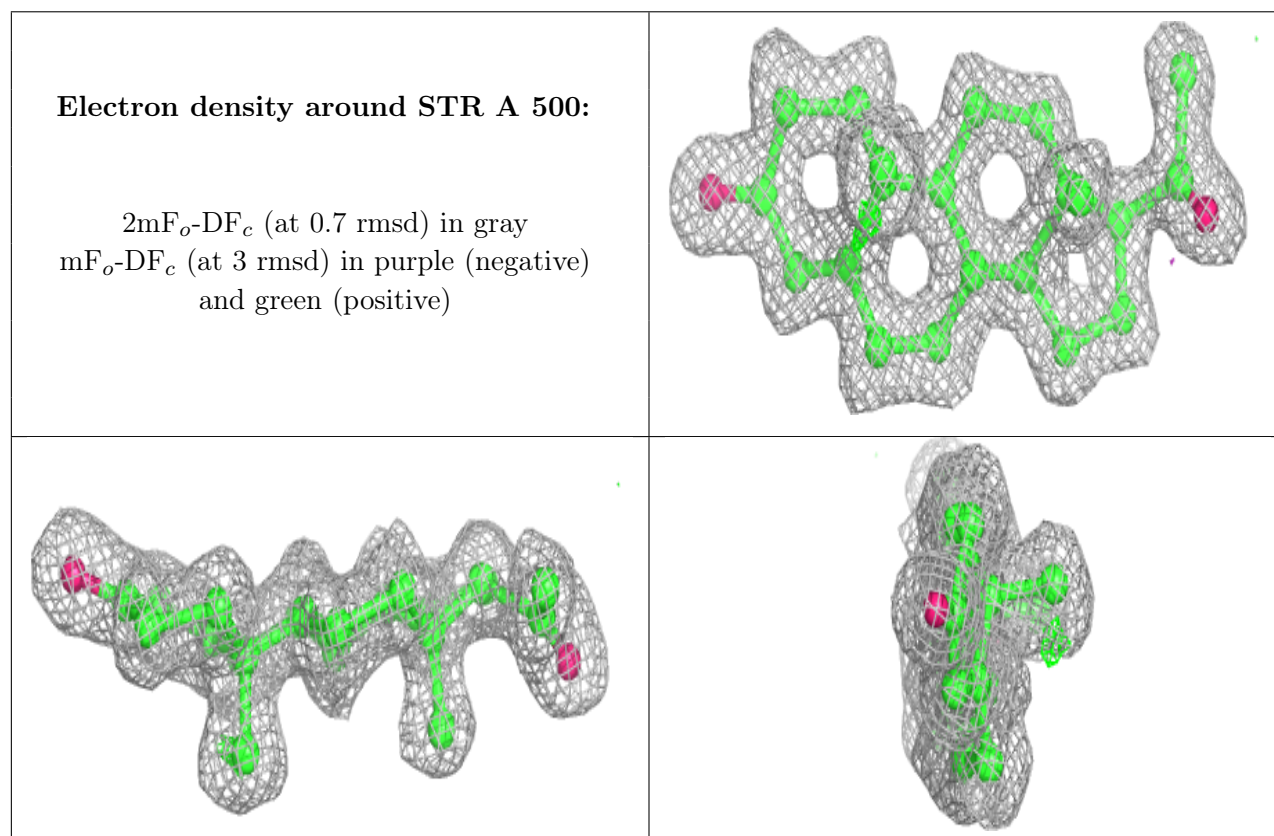
There are no monosaccharides in this entry.

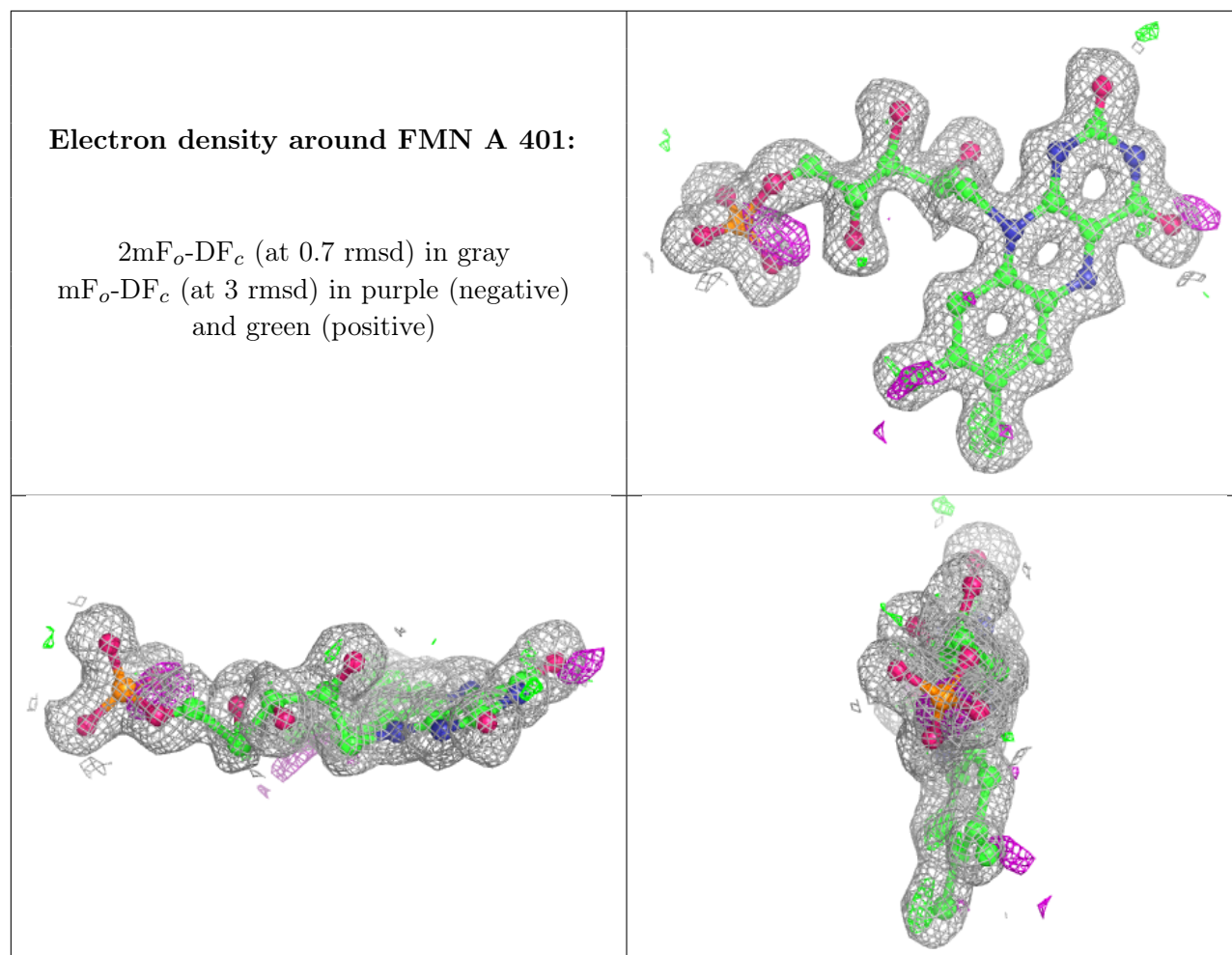
### 6.4 Ligands [i](#)

In the following table, the Atoms column lists the number of modelled atoms in the group and the number defined in the chemical component dictionary. The B-factors column lists the minimum, median, 95<sup>th</sup> percentile and maximum values of B factors of atoms in the group. The column labelled ‘Q< 0.9’ lists the number of atoms with occupancy less than 0.9.

Mol	Type	Chain	Res	Atoms	RSCC	RSR	B-factors( $\text{\AA}^2$ )	Q<0.9
3	STR	A	500	23/23	0.88	0.13	7,9,16,20	0
2	FMN	A	401	31/31	0.90	0.14	6,9,15,16	0

The following is a graphical depiction of the model fit to experimental electron density of all instances of the Ligand of Interest. In addition, ligands with molecular weight > 250 and outliers as shown on the geometry validation Tables will also be included. Each fit is shown from different orientation to approximate a three-dimensional view.





## 6.5 Other polymers [i](#)

There are no such residues in this entry.