



wwPDB X-ray Structure Validation Summary Report ⓘ

Apr 30, 2024 – 07:34 pm BST

PDB ID : 5H5X
Title : Crystal structure of NADH bound carbonyl reductase from *Streptomyces coelicolor*
Authors : Kong, X.-D.; Xu, J.-H.; Zhou, J.
Deposited on : 2016-11-10
Resolution : 2.30 Å (reported)

This is a wwPDB X-ray Structure Validation Summary Report for a publicly released PDB entry.

We welcome your comments at validation@mail.wwpdb.org

A user guide is available at

<https://www.wwpdb.org/validation/2017/XrayValidationReportHelp>

with specific help available everywhere you see the ⓘ symbol.

The types of validation reports are described at

<http://www.wwpdb.org/validation/2017/FAQs#types>.

The following versions of software and data (see [references ⓘ](#)) were used in the production of this report:

MolProbity : 4.02b-467
Mogul : 1.8.4, CSD as541be (2020)
Xtriage (Phenix) : 1.13
EDS : 2.36.2
buster-report : 1.1.7 (2018)
Percentile statistics : 20191225.v01 (using entries in the PDB archive December 25th 2019)
Refmac : 5.8.0158
CCP4 : 7.0.044 (Gargrove)
Ideal geometry (proteins) : Engh & Huber (2001)
Ideal geometry (DNA, RNA) : Parkinson et al. (1996)
Validation Pipeline (wwPDB-VP) : 2.36.2

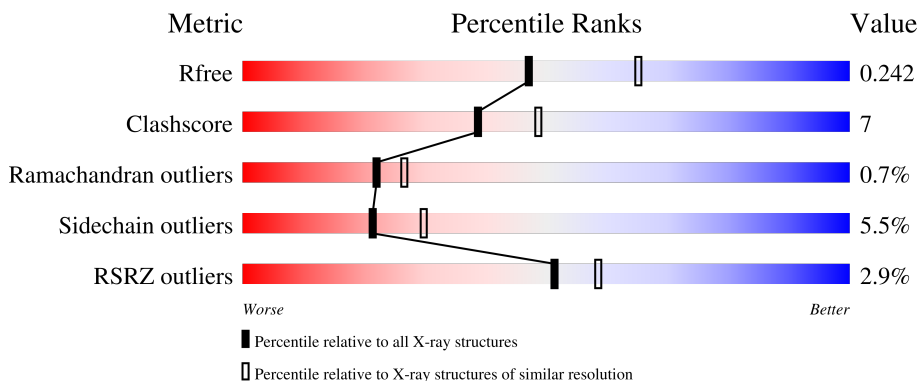
1 Overall quality at a glance

The following experimental techniques were used to determine the structure:

X-RAY DIFFRACTION

The reported resolution of this entry is 2.30 Å.

Percentile scores (ranging between 0-100) for global validation metrics of the entry are shown in the following graphic. The table shows the number of entries on which the scores are based.



Metric	Whole archive (#Entries)	Similar resolution (#Entries, resolution range(Å))
R_{free}	130704	5042 (2.30-2.30)
Clashscore	141614	5643 (2.30-2.30)
Ramachandran outliers	138981	5575 (2.30-2.30)
Sidechain outliers	138945	5575 (2.30-2.30)
RSRZ outliers	127900	4938 (2.30-2.30)

The table below summarises the geometric issues observed across the polymeric chains and their fit to the electron density. The red, orange, yellow and green segments of the lower bar indicate the fraction of residues that contain outliers for ≥ 3 , 2, 1 and 0 types of geometric quality criteria respectively. A grey segment represents the fraction of residues that are not modelled. The numeric value for each fraction is indicated below the corresponding segment, with a dot representing fractions $\leq 5\%$. The upper red bar (where present) indicates the fraction of residues that have poor fit to the electron density. The numeric value is given above the bar.

Mol	Chain	Length	Quality of chain
1	A	263	 82% 11% • 6%
1	B	263	 83% 11% • •
1	C	263	 82% 14% • •
1	D	263	 75% 17% • 5%
1	E	263	 78% 13% • 6%

Continued on next page...

Continued from previous page...

Mol	Chain	Length	Quality of chain
1	F	263	 2% 81% 13% . .
1	G	263	 3% 81% 16% . .
1	H	263	 5% 75% 19% . .
1	I	263	 2% 76% 16% . 8%
1	J	263	 2% 83% 11% . .
1	K	263	 4% 83% 13% . .
1	L	263	 3% 81% 11% . 6%

The following table lists non-polymeric compounds, carbohydrate monomers and non-standard residues in protein, DNA, RNA chains that are outliers for geometric or electron-density-fit criteria:

Mol	Type	Chain	Res	Chirality	Geometry	Clashes	Electron density
3	IPA	G	302	-	-	X	-
3	IPA	K	303	-	-	X	-
3	IPA	L	304	-	-	X	-

2 Entry composition

There are 5 unique types of molecules in this entry. The entry contains 23002 atoms, of which 0 are hydrogens and 0 are deuteriums.

In the tables below, the ZeroOcc column contains the number of atoms modelled with zero occupancy, the AltConf column contains the number of residues with at least one atom in alternate conformation and the Trace column contains the number of residues modelled with at most 2 atoms.

- Molecule 1 is a protein called Putative oxidoreductase.

Mol	Chain	Residues	Atoms					ZeroOcc	AltConf	Trace
			Total	C	N	O	S			
1	A	248	Total 1758	C 1106	N 308	O 342	S 2	0	0	0
1	B	253	Total 1797	C 1133	N 314	O 348	S 2	0	0	0
1	C	257	Total 1823	C 1149	N 318	O 354	S 2	0	0	0
1	D	250	Total 1774	C 1116	N 311	O 345	S 2	0	0	0
1	E	248	Total 1757	C 1106	N 308	O 342	S 1	0	0	0
1	F	253	Total 1797	C 1133	N 314	O 348	S 2	0	0	0
1	G	257	Total 1823	C 1149	N 318	O 354	S 2	0	0	0
1	H	252	Total 1789	C 1127	N 313	O 347	S 2	0	0	0
1	I	243	Total 1728	C 1090	N 304	O 333	S 1	0	1	0
1	J	253	Total 1797	C 1133	N 314	O 348	S 2	0	0	0
1	K	257	Total 1823	C 1149	N 318	O 354	S 2	0	0	0
1	L	246	Total 1743	C 1097	N 306	O 339	S 1	0	0	0

There are 36 discrepancies between the modelled and reference sequences:

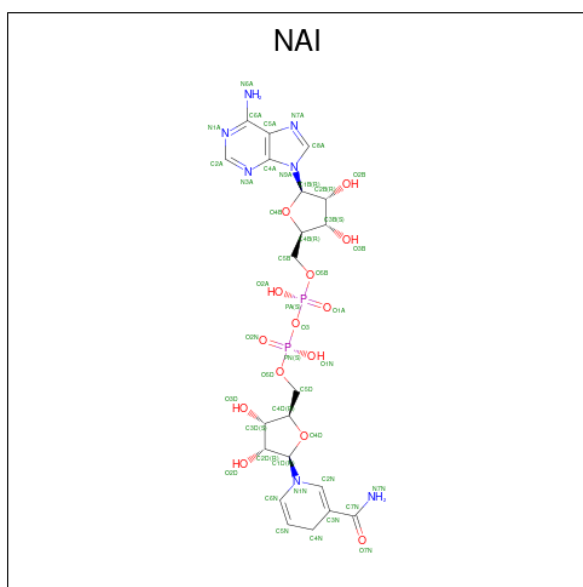
Chain	Residue	Modelled	Actual	Comment	Reference
A	212	GLU	ASP	conflict	UNP Q9KYM4
A	232	ASP	GLU	conflict	UNP Q9KYM4
A	239	VAL	ALA	conflict	UNP Q9KYM4
B	212	GLU	ASP	conflict	UNP Q9KYM4
B	232	ASP	GLU	conflict	UNP Q9KYM4

Continued on next page...

Continued from previous page...

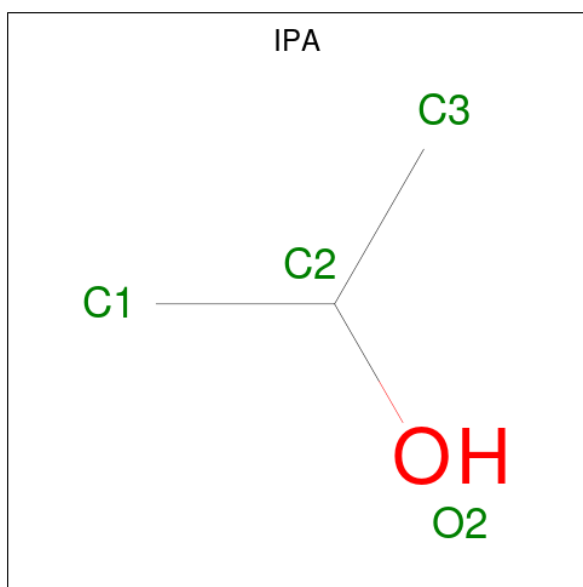
Chain	Residue	Modelled	Actual	Comment	Reference
B	239	VAL	ALA	conflict	UNP Q9KYM4
C	212	GLU	ASP	conflict	UNP Q9KYM4
C	232	ASP	GLU	conflict	UNP Q9KYM4
C	239	VAL	ALA	conflict	UNP Q9KYM4
D	212	GLU	ASP	conflict	UNP Q9KYM4
D	232	ASP	GLU	conflict	UNP Q9KYM4
D	239	VAL	ALA	conflict	UNP Q9KYM4
E	212	GLU	ASP	conflict	UNP Q9KYM4
E	232	ASP	GLU	conflict	UNP Q9KYM4
E	239	VAL	ALA	conflict	UNP Q9KYM4
F	212	GLU	ASP	conflict	UNP Q9KYM4
F	232	ASP	GLU	conflict	UNP Q9KYM4
F	239	VAL	ALA	conflict	UNP Q9KYM4
G	212	GLU	ASP	conflict	UNP Q9KYM4
G	232	ASP	GLU	conflict	UNP Q9KYM4
G	239	VAL	ALA	conflict	UNP Q9KYM4
H	212	GLU	ASP	conflict	UNP Q9KYM4
H	232	ASP	GLU	conflict	UNP Q9KYM4
H	239	VAL	ALA	conflict	UNP Q9KYM4
I	212	GLU	ASP	conflict	UNP Q9KYM4
I	232	ASP	GLU	conflict	UNP Q9KYM4
I	239	VAL	ALA	conflict	UNP Q9KYM4
J	212	GLU	ASP	conflict	UNP Q9KYM4
J	232	ASP	GLU	conflict	UNP Q9KYM4
J	239	VAL	ALA	conflict	UNP Q9KYM4
K	212	GLU	ASP	conflict	UNP Q9KYM4
K	232	ASP	GLU	conflict	UNP Q9KYM4
K	239	VAL	ALA	conflict	UNP Q9KYM4
L	212	GLU	ASP	conflict	UNP Q9KYM4
L	232	ASP	GLU	conflict	UNP Q9KYM4
L	239	VAL	ALA	conflict	UNP Q9KYM4

- Molecule 2 is 1,4-DIHYDRONICOTINAMIDE ADENINE DINUCLEOTIDE (three-letter code: NAI) (formula: C₂₁H₂₉N₇O₁₄P₂).



Mol	Chain	Residues	Atoms					ZeroOcc	AltConf	
			Total	C	N	O	P			
2	A	1	Total	44	21	7	14	2	0	0
2	B	1	Total	44	21	7	14	2	0	0
2	C	1	Total	44	21	7	14	2	0	0
2	D	1	Total	44	21	7	14	2	0	0
2	E	1	Total	44	21	7	14	2	0	0
2	F	1	Total	44	21	7	14	2	0	0
2	G	1	Total	44	21	7	14	2	0	0
2	H	1	Total	44	21	7	14	2	0	0
2	I	1	Total	44	21	7	14	2	0	0
2	J	1	Total	44	21	7	14	2	0	0
2	K	1	Total	44	21	7	14	2	0	0
2	L	1	Total	44	21	7	14	2	0	0

- Molecule 3 is ISOPROPYL ALCOHOL (three-letter code: IPA) (formula: C₃H₈O).



Mol	Chain	Residues	Atoms	ZeroOcc	AltConf
3	A	1	Total C O 4 3 1	0	0
3	A	1	Total C O 4 3 1	0	0
3	B	1	Total C O 4 3 1	0	0
3	B	1	Total C O 4 3 1	0	0
3	C	1	Total C O 4 3 1	0	0
3	C	1	Total C O 4 3 1	0	0
3	D	1	Total C O 4 3 1	0	0
3	E	1	Total C O 4 3 1	0	0
3	E	1	Total C O 4 3 1	0	0
3	F	1	Total C O 4 3 1	0	0
3	F	1	Total C O 4 3 1	0	0
3	G	1	Total C O 4 3 1	0	0
3	G	1	Total C O 4 3 1	0	0
3	H	1	Total C O 4 3 1	0	0

Continued on next page...

Continued from previous page...

Mol	Chain	Residues	Atoms	ZeroOcc	AltConf
3	H	1	Total C O 4 3 1	0	0
3	I	1	Total C O 4 3 1	0	0
3	I	1	Total C O 4 3 1	0	0
3	J	1	Total C O 4 3 1	0	0
3	K	1	Total C O 4 3 1	0	0
3	K	1	Total C O 4 3 1	0	0
3	L	1	Total C O 4 3 1	0	0
3	L	1	Total C O 4 3 1	0	0

- Molecule 4 is MAGNESIUM ION (three-letter code: MG) (formula: Mg).

Mol	Chain	Residues	Atoms	ZeroOcc	AltConf
4	C	1	Total Mg 1 1	0	0
4	D	1	Total Mg 1 1	0	0
4	E	1	Total Mg 1 1	0	0
4	H	1	Total Mg 1 1	0	0
4	I	1	Total Mg 1 1	0	0
4	L	1	Total Mg 1 1	0	0

- Molecule 5 is water.

Mol	Chain	Residues	Atoms	ZeroOcc	AltConf
5	A	93	Total O 93 93	0	0
5	B	85	Total O 85 85	0	0
5	C	97	Total O 97 97	0	0

Continued on next page...

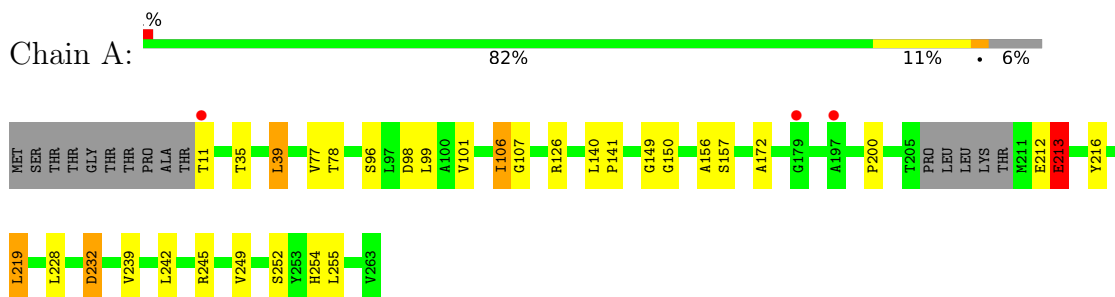
Continued from previous page...

Mol	Chain	Residues	Atoms	ZeroOcc	AltConf
5	D	76	Total O 76 76	0	0
5	E	75	Total O 75 75	0	0
5	F	78	Total O 78 78	0	0
5	G	80	Total O 80 80	0	0
5	H	77	Total O 77 77	0	0
5	I	52	Total O 52 52	0	0
5	J	93	Total O 93 93	0	0
5	K	98	Total O 98 98	0	0
5	L	67	Total O 67 67	0	0

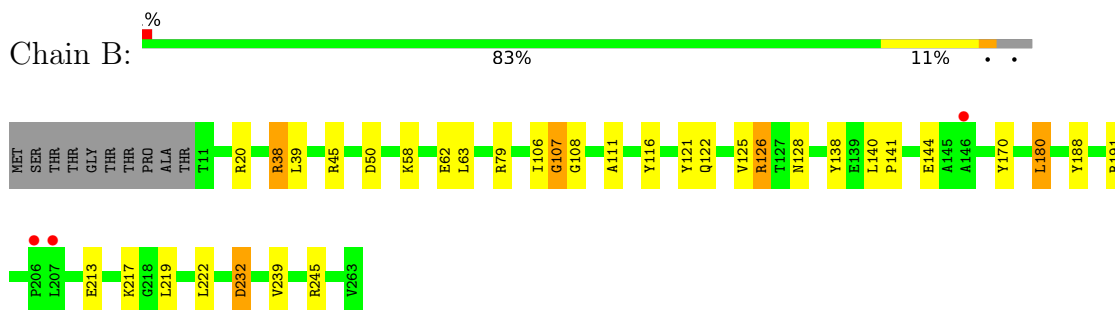
3 Residue-property plots [i](#)

These plots are drawn for all protein, RNA, DNA and oligosaccharide chains in the entry. The first graphic for a chain summarises the proportions of the various outlier classes displayed in the second graphic. The second graphic shows the sequence view annotated by issues in geometry and electron density. Residues are color-coded according to the number of geometric quality criteria for which they contain at least one outlier: green = 0, yellow = 1, orange = 2 and red = 3 or more. A red dot above a residue indicates a poor fit to the electron density ($RSRZ > 2$). Stretches of 2 or more consecutive residues without any outlier are shown as a green connector. Residues present in the sample, but not in the model, are shown in grey.

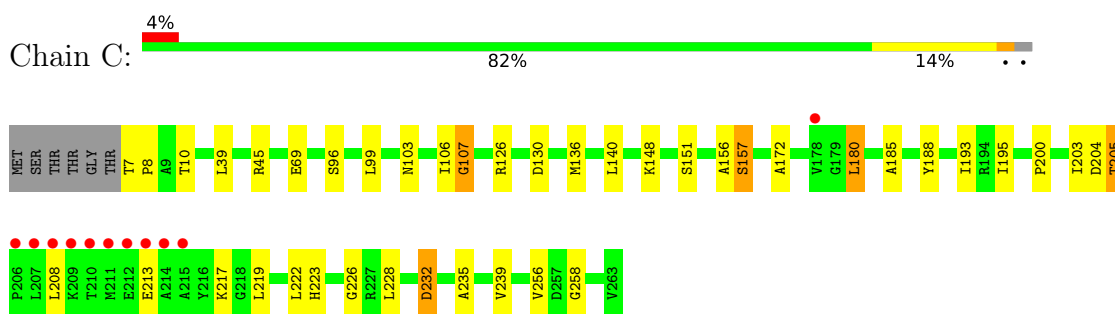
- Molecule 1: Putative oxidoreductase



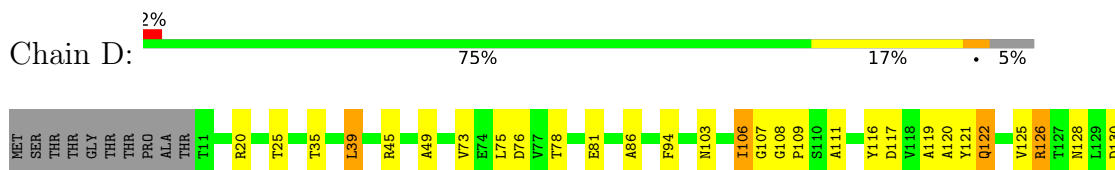
- Molecule 1: Putative oxidoreductase

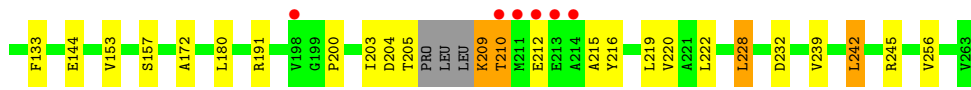


- Molecule 1: Putative oxidoreductase

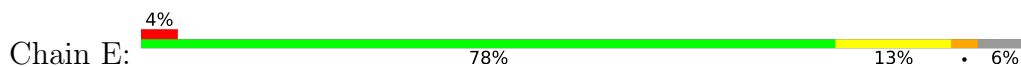


- Molecule 1: Putative oxidoreductase

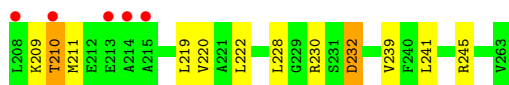
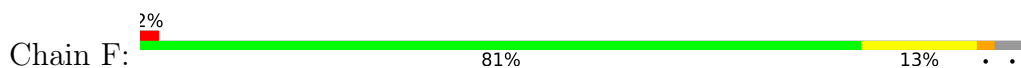




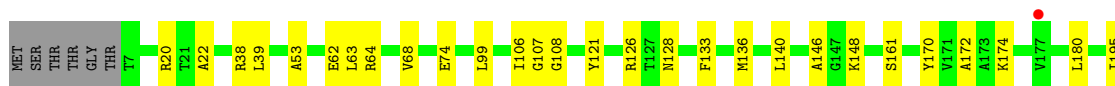
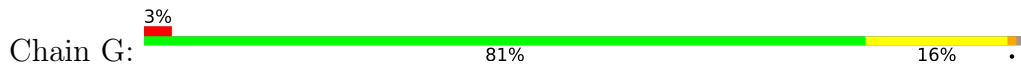
- Molecule 1: Putative oxidoreductase



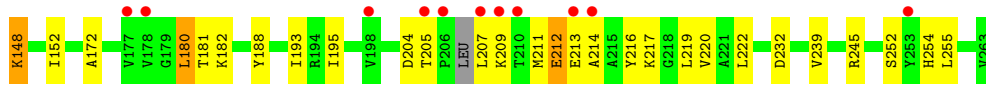
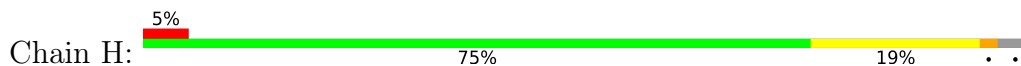
- Molecule 1: Putative oxidoreductase



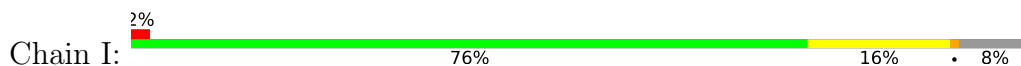
- Molecule 1: Putative oxidoreductase



- Molecule 1: Putative oxidoreductase



- Molecule 1: Putative oxidoreductase



4 Data and refinement statistics i

Property	Value	Source
Space group	P 31	Depositor
Cell constants a, b, c, α , β , γ	187.79Å 187.79Å 80.86Å 90.00° 90.00° 120.00°	Depositor
Resolution (Å)	32.50 – 2.30 37.13 – 2.30	Depositor EDS
% Data completeness (in resolution range)	84.0 (32.50-2.30) 84.0 (37.13-2.30)	Depositor EDS
R_{merge}	0.14	Depositor
R_{sym}	(Not available)	Depositor
$\langle I/\sigma(I) \rangle$ ¹	1.29 (at 2.29Å)	Xtrriage
Refinement program	PHENIX	Depositor
R, R_{free}	0.179 , 0.243 0.181 , 0.242	Depositor DCC
R_{free} test set	5978 reflections (5.03%)	wwPDB-VP
Wilson B-factor (Å ²)	41.7	Xtrriage
Anisotropy	0.100	Xtrriage
Bulk solvent k_{sol} (e/Å ³), B_{sol} (Å ²)	0.34 , 36.8	EDS
L-test for twinning ²	$\langle L \rangle = 0.46$, $\langle L^2 \rangle = 0.29$	Xtrriage
Estimated twinning fraction	0.058 for -h,-k,l 0.054 for h,-h-k,-l 0.055 for -k,-h,-l	Xtrriage
F_o, F_c correlation	0.95	EDS
Total number of atoms	23002	wwPDB-VP
Average B, all atoms (Å ²)	35.0	wwPDB-VP

Xtrriage's analysis on translational NCS is as follows: *The largest off-origin peak in the Patterson function is 2.05% of the height of the origin peak. No significant pseudotranslation is detected.*

¹Intensities estimated from amplitudes.

²Theoretical values of $\langle |L| \rangle$, $\langle L^2 \rangle$ for acentric reflections are 0.5, 0.333 respectively for untwinned datasets, and 0.375, 0.2 for perfectly twinned datasets.

5 Model quality [i](#)

5.1 Standard geometry [i](#)

Bond lengths and bond angles in the following residue types are not validated in this section: IPA, MG, NAI

The Z score for a bond length (or angle) is the number of standard deviations the observed value is removed from the expected value. A bond length (or angle) with $|Z| > 5$ is considered an outlier worth inspection. RMSZ is the root-mean-square of all Z scores of the bond lengths (or angles).

Mol	Chain	Bond lengths		Bond angles	
		RMSZ	# Z >5	RMSZ	# Z >5
1	A	0.42	0/1785	0.63	2/2423 (0.1%)
1	B	0.44	0/1826	0.62	2/2481 (0.1%)
1	C	0.45	0/1853	0.64	2/2520 (0.1%)
1	D	0.45	0/1801	0.63	0/2444
1	E	0.43	0/1785	0.59	2/2425 (0.1%)
1	F	0.45	0/1826	0.62	2/2481 (0.1%)
1	G	0.42	0/1853	0.61	2/2520 (0.1%)
1	H	0.42	0/1818	0.61	1/2470 (0.0%)
1	I	0.39	0/1758	0.56	0/2386
1	J	0.43	0/1826	0.59	1/2481 (0.0%)
1	K	0.43	0/1853	0.62	1/2520 (0.0%)
1	L	0.44	1/1770 (0.1%)	0.61	1/2403 (0.0%)
All	All	0.43	1/21754 (0.0%)	0.61	16/29554 (0.1%)

Chiral center outliers are detected by calculating the chiral volume of a chiral center and verifying if the center is modelled as a planar moiety or with the opposite hand. A planarity outlier is detected by checking planarity of atoms in a peptide group, atoms in a mainchain group or atoms of a sidechain that are expected to be planar.

Mol	Chain	#Chirality outliers	#Planarity outliers
1	D	0	1
1	E	0	1
1	G	0	1
1	H	0	1
1	J	0	1
All	All	0	5

All (1) bond length outliers are listed below:

Mol	Chain	Res	Type	Atoms	Z	Observed(Å)	Ideal(Å)
1	L	232	ASP	CB-CG	5.73	1.63	1.51

The worst 5 of 16 bond angle outliers are listed below:

Mol	Chain	Res	Type	Atoms	Z	Observed(°)	Ideal(°)
1	A	232	ASP	CB-CG-OD1	7.42	124.98	118.30
1	J	232	ASP	CB-CG-OD2	7.32	124.89	118.30
1	F	232	ASP	CB-CG-OD1	-7.24	111.78	118.30
1	L	232	ASP	CB-CG-OD1	7.19	124.77	118.30
1	E	232	ASP	CB-CG-OD1	6.50	124.15	118.30

There are no chirality outliers.

All (5) planarity outliers are listed below:

Mol	Chain	Res	Type	Group
1	D	106	ILE	Peptide
1	E	258	GLY	Peptide
1	G	258	GLY	Peptide
1	H	106	ILE	Peptide
1	J	106	ILE	Peptide

5.2 Too-close contacts [i](#)

In the following table, the Non-H and H(model) columns list the number of non-hydrogen atoms and hydrogen atoms in the chain respectively. The H(added) column lists the number of hydrogen atoms added and optimized by MolProbity. The Clashes column lists the number of clashes within the asymmetric unit, whereas Symm-Clashes lists symmetry-related clashes.

Mol	Chain	Non-H	H(model)	H(added)	Clashes	Symm-Clashes
1	A	1758	0	1737	23	0
1	B	1797	0	1787	20	0
1	C	1823	0	1813	23	0
1	D	1774	0	1757	41	0
1	E	1757	0	1735	34	0
1	F	1797	0	1787	21	0
1	G	1823	0	1813	24	0
1	H	1789	0	1776	31	0
1	I	1728	0	1719	33	0
1	J	1797	0	1787	15	0
1	K	1823	0	1813	25	0
1	L	1743	0	1721	22	0
2	A	44	0	27	3	0
2	B	44	0	27	3	0
2	C	44	0	27	6	0
2	D	44	0	27	3	0

Continued on next page...

Continued from previous page...

Mol	Chain	Non-H	H(model)	H(added)	Clashes	Symm-Clashes
2	E	44	0	27	6	0
2	F	44	0	27	3	0
2	G	44	0	27	3	0
2	H	44	0	27	4	0
2	I	44	0	27	5	0
2	J	44	0	27	3	0
2	K	44	0	27	6	0
2	L	44	0	27	5	0
3	A	8	0	16	2	0
3	B	8	0	16	3	0
3	C	8	0	16	3	0
3	D	4	0	8	2	0
3	E	8	0	16	3	0
3	F	8	0	16	3	0
3	G	8	0	16	5	0
3	H	8	0	16	3	0
3	I	8	0	16	4	0
3	J	4	0	8	2	0
3	K	8	0	16	4	0
3	L	8	0	16	4	0
4	C	1	0	0	0	0
4	D	1	0	0	0	0
4	E	1	0	0	0	0
4	H	1	0	0	0	0
4	I	1	0	0	0	0
4	L	1	0	0	0	0
5	A	93	0	0	4	0
5	B	85	0	0	4	0
5	C	97	0	0	4	0
5	D	76	0	0	6	0
5	E	75	0	0	3	0
5	F	78	0	0	2	0
5	G	80	0	0	2	0
5	H	77	0	0	2	0
5	I	52	0	0	4	0
5	J	93	0	0	3	0
5	K	98	0	0	2	0
5	L	67	0	0	2	0
All	All	23002	0	21745	326	0

The all-atom clashscore is defined as the number of clashes found per 1000 atoms (including hydrogen atoms). The all-atom clashscore for this structure is 7.

The worst 5 of 326 close contacts within the same asymmetric unit are listed below, sorted by their clash magnitude.

Atom-1	Atom-2	Interatomic distance (Å)	Clash overlap (Å)
2:F:301:NAI:H4N	3:F:302:IPA:H2	1.42	1.00
1:E:205:THR:HG21	2:E:301:NAI:H72N	1.40	0.87
2:H:301:NAI:H4N	3:H:303:IPA:H2	1.60	0.84
2:B:301:NAI:H4N	3:B:302:IPA:H2	1.63	0.81
1:K:172:ALA:HB2	1:L:180:LEU:HD13	1.64	0.79

There are no symmetry-related clashes.

5.3 Torsion angles [i](#)

5.3.1 Protein backbone [i](#)

In the following table, the Percentiles column shows the percent Ramachandran outliers of the chain as a percentile score with respect to all X-ray entries followed by that with respect to entries of similar resolution.

The Analysed column shows the number of residues for which the backbone conformation was analysed, and the total number of residues.

Mol	Chain	Analysed	Favoured	Allowed	Outliers	Percentiles	
1	A	244/263 (93%)	229 (94%)	12 (5%)	3 (1%)	13	14
1	B	251/263 (95%)	239 (95%)	11 (4%)	1 (0%)	34	42
1	C	255/263 (97%)	244 (96%)	9 (4%)	2 (1%)	19	23
1	D	246/263 (94%)	236 (96%)	10 (4%)	0	100	100
1	E	244/263 (93%)	230 (94%)	12 (5%)	2 (1%)	19	23
1	F	251/263 (95%)	238 (95%)	10 (4%)	3 (1%)	13	14
1	G	255/263 (97%)	243 (95%)	11 (4%)	1 (0%)	34	42
1	H	250/263 (95%)	238 (95%)	11 (4%)	1 (0%)	34	42
1	I	240/263 (91%)	223 (93%)	16 (7%)	1 (0%)	34	42
1	J	251/263 (95%)	237 (94%)	11 (4%)	3 (1%)	13	14
1	K	255/263 (97%)	243 (95%)	9 (4%)	3 (1%)	13	14
1	L	242/263 (92%)	228 (94%)	13 (5%)	1 (0%)	34	42
All	All	2984/3156 (95%)	2828 (95%)	135 (4%)	21 (1%)	22	26

5 of 21 Ramachandran outliers are listed below:

Mol	Chain	Res	Type
1	A	213	GLU
1	C	156	ALA
1	C	204	ASP
1	F	210	THR
1	H	211	MET

5.3.2 Protein sidechains [i](#)

In the following table, the Percentiles column shows the percent sidechain outliers of the chain as a percentile score with respect to all X-ray entries followed by that with respect to entries of similar resolution.

The Analysed column shows the number of residues for which the sidechain conformation was analysed, and the total number of residues.

Mol	Chain	Analysed	Rotameric	Outliers	Percentiles	
1	A	162/175 (93%)	157 (97%)	5 (3%)	40	55
1	B	167/175 (95%)	158 (95%)	9 (5%)	22	30
1	C	170/175 (97%)	158 (93%)	12 (7%)	14	19
1	D	164/175 (94%)	152 (93%)	12 (7%)	14	18
1	E	162/175 (93%)	156 (96%)	6 (4%)	34	48
1	F	167/175 (95%)	158 (95%)	9 (5%)	22	30
1	G	170/175 (97%)	161 (95%)	9 (5%)	22	31
1	H	166/175 (95%)	151 (91%)	15 (9%)	9	11
1	I	160/175 (91%)	154 (96%)	6 (4%)	33	47
1	J	167/175 (95%)	155 (93%)	12 (7%)	14	18
1	K	170/175 (97%)	163 (96%)	7 (4%)	30	43
1	L	160/175 (91%)	153 (96%)	7 (4%)	28	39
All	All	1985/2100 (94%)	1876 (94%)	109 (6%)	21	30

5 of 109 residues with a non-rotameric sidechain are listed below:

Mol	Chain	Res	Type
1	G	205	THR
1	H	212	GLU
1	K	222	LEU
1	G	209	LYS
1	H	110	SER

Sometimes sidechains can be flipped to improve hydrogen bonding and reduce clashes. There are no such sidechains identified.

5.3.3 RNA [i](#)

There are no RNA molecules in this entry.

5.4 Non-standard residues in protein, DNA, RNA chains [i](#)

There are no non-standard protein/DNA/RNA residues in this entry.

5.5 Carbohydrates [i](#)

There are no monosaccharides in this entry.

5.6 Ligand geometry [i](#)

Of 40 ligands modelled in this entry, 6 are monoatomic - leaving 34 for Mogul analysis.

In the following table, the Counts columns list the number of bonds (or angles) for which Mogul statistics could be retrieved, the number of bonds (or angles) that are observed in the model and the number of bonds (or angles) that are defined in the Chemical Component Dictionary. The Link column lists molecule types, if any, to which the group is linked. The Z score for a bond length (or angle) is the number of standard deviations the observed value is removed from the expected value. A bond length (or angle) with $|Z| > 2$ is considered an outlier worth inspection. RMSZ is the root-mean-square of all Z scores of the bond lengths (or angles).

Mol	Type	Chain	Res	Link	Bond lengths			Bond angles		
					Counts	RMSZ	# Z > 2	Counts	RMSZ	# Z > 2
2	NAI	L	301	-	42,48,48	2.14	15 (35%)	47,73,73	1.39	5 (10%)
3	IPA	E	304	-	3,3,3	0.44	0	3,3,3	0.36	0
3	IPA	L	304	-	3,3,3	0.44	0	3,3,3	0.30	0
2	NAI	H	301	-	42,48,48	2.17	12 (28%)	47,73,73	1.36	6 (12%)
3	IPA	A	303	-	3,3,3	0.53	0	3,3,3	0.36	0
3	IPA	F	303	-	3,3,3	0.55	0	3,3,3	0.35	0
3	IPA	H	303	-	3,3,3	0.51	0	3,3,3	0.27	0
2	NAI	K	301	-	42,48,48	2.13	13 (30%)	47,73,73	1.37	7 (14%)
3	IPA	J	302	-	3,3,3	0.56	0	3,3,3	0.26	0
2	NAI	B	301	-	42,48,48	2.18	15 (35%)	47,73,73	1.39	7 (14%)
2	NAI	F	301	-	42,48,48	2.12	14 (33%)	47,73,73	1.29	5 (10%)
3	IPA	C	302	-	3,3,3	0.46	0	3,3,3	0.25	0
2	NAI	D	301	-	42,48,48	2.07	13 (30%)	47,73,73	1.40	4 (8%)

Mol	Type	Chain	Res	Link	Bond lengths			Bond angles		
					Counts	RMSZ	# Z > 2	Counts	RMSZ	# Z > 2
3	IPA	L	303	-	3,3,3	0.49	0	3,3,3	0.37	0
3	IPA	G	303	-	3,3,3	0.50	0	3,3,3	0.39	0
2	NAI	G	301	-	42,48,48	2.18	14 (33%)	47,73,73	1.35	7 (14%)
3	IPA	D	302	-	3,3,3	0.58	0	3,3,3	0.33	0
3	IPA	K	302	-	3,3,3	0.58	0	3,3,3	0.12	0
3	IPA	K	303	-	3,3,3	0.56	0	3,3,3	0.53	0
2	NAI	J	301	-	42,48,48	2.15	14 (33%)	47,73,73	1.39	6 (12%)
3	IPA	F	302	-	3,3,3	0.48	0	3,3,3	0.31	0
3	IPA	B	303	-	3,3,3	0.48	0	3,3,3	0.41	0
3	IPA	H	304	-	3,3,3	0.44	0	3,3,3	0.63	0
3	IPA	I	303	-	3,3,3	0.52	0	3,3,3	0.35	0
3	IPA	I	304	-	3,3,3	0.47	0	3,3,3	0.29	0
2	NAI	A	301	-	42,48,48	2.11	14 (33%)	47,73,73	1.38	6 (12%)
2	NAI	I	301	-	42,48,48	2.18	15 (35%)	47,73,73	1.27	7 (14%)
3	IPA	E	303	-	3,3,3	0.42	0	3,3,3	0.29	0
2	NAI	E	301	-	42,48,48	2.15	14 (33%)	47,73,73	1.36	5 (10%)
3	IPA	B	302	-	3,3,3	0.52	0	3,3,3	0.20	0
3	IPA	G	302	-	3,3,3	0.41	0	3,3,3	0.23	0
3	IPA	C	304	-	3,3,3	0.52	0	3,3,3	0.36	0
2	NAI	C	301	-	42,48,48	2.18	14 (33%)	47,73,73	1.37	7 (14%)
3	IPA	A	302	-	3,3,3	0.51	0	3,3,3	0.22	0

In the following table, the Chirals column lists the number of chiral outliers, the number of chiral centers analysed, the number of these observed in the model and the number defined in the Chemical Component Dictionary. Similar counts are reported in the Torsion and Rings columns. '-' means no outliers of that kind were identified.

Mol	Type	Chain	Res	Link	Chirals	Torsions	Rings
2	NAI	B	301	-	-	5/25/72/72	0/5/5/5
2	NAI	F	301	-	-	13/25/72/72	0/5/5/5
2	NAI	G	301	-	-	8/25/72/72	0/5/5/5
2	NAI	L	301	-	-	8/25/72/72	0/5/5/5
2	NAI	A	301	-	-	9/25/72/72	0/5/5/5
2	NAI	I	301	-	-	12/25/72/72	0/5/5/5
2	NAI	J	301	-	-	4/25/72/72	0/5/5/5
2	NAI	D	301	-	-	6/25/72/72	0/5/5/5
2	NAI	E	301	-	-	5/25/72/72	0/5/5/5
2	NAI	H	301	-	-	10/25/72/72	0/5/5/5
2	NAI	K	301	-	-	8/25/72/72	0/5/5/5

Continued on next page...

Continued from previous page...

Mol	Type	Chain	Res	Link	Chirals	Torsions	Rings
2	NAI	C	301	-	-	7/25/72/72	0/5/5/5

The worst 5 of 167 bond length outliers are listed below:

Mol	Chain	Res	Type	Atoms	Z	Observed(Å)	Ideal(Å)
2	E	301	NAI	O4B-C1B	6.17	1.49	1.41
2	J	301	NAI	O4B-C1B	6.01	1.49	1.41
2	B	301	NAI	O4B-C1B	5.96	1.49	1.41
2	L	301	NAI	O4B-C1B	5.90	1.49	1.41
2	G	301	NAI	O4B-C1B	5.81	1.49	1.41

The worst 5 of 72 bond angle outliers are listed below:

Mol	Chain	Res	Type	Atoms	Z	Observed(°)	Ideal(°)
2	D	301	NAI	N3A-C2A-N1A	-4.48	121.68	128.68
2	C	301	NAI	N3A-C2A-N1A	-4.31	121.94	128.68
2	J	301	NAI	N3A-C2A-N1A	-4.23	122.07	128.68
2	K	301	NAI	N3A-C2A-N1A	-4.09	122.28	128.68
2	L	301	NAI	N3A-C2A-N1A	-4.08	122.30	128.68

There are no chirality outliers.

5 of 95 torsion outliers are listed below:

Mol	Chain	Res	Type	Atoms
2	A	301	NAI	C5D-O5D-PN-O1N
2	A	301	NAI	C5D-O5D-PN-O2N
2	B	301	NAI	O4B-C4B-C5B-O5B
2	C	301	NAI	C5D-O5D-PN-O1N
2	E	301	NAI	C5B-O5B-PA-O1A

There are no ring outliers.

30 monomers are involved in 62 short contacts:

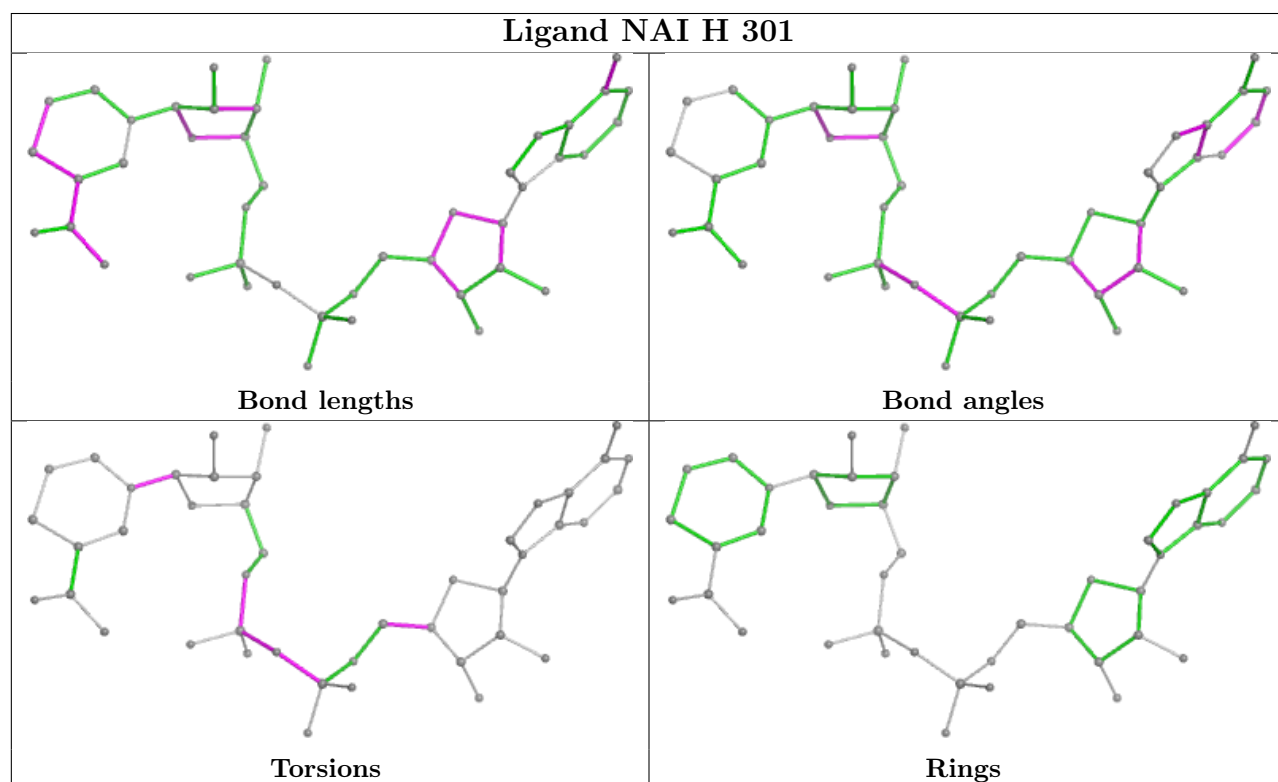
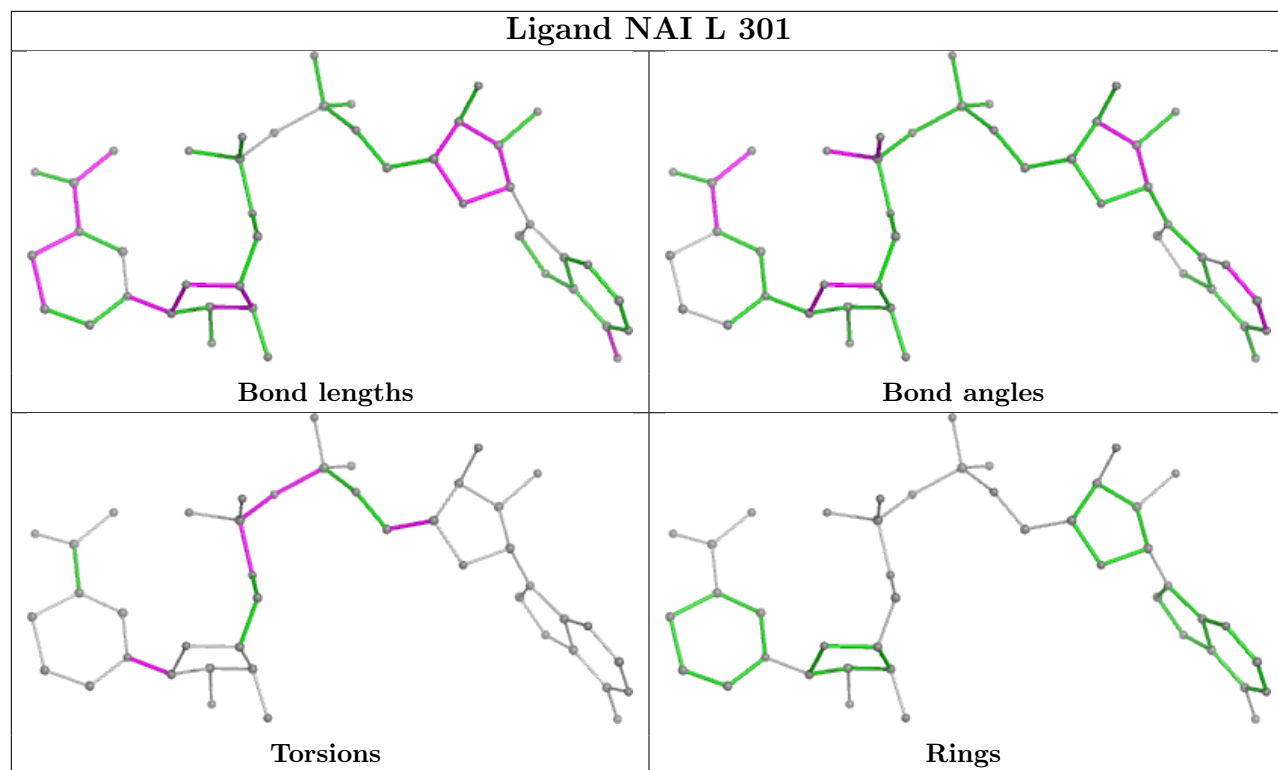
Mol	Chain	Res	Type	Clashes	Symm-Clashes
2	L	301	NAI	5	0
3	L	304	IPA	4	0
2	H	301	NAI	4	0
3	F	303	IPA	1	0
3	H	303	IPA	3	0
2	K	301	NAI	6	0
3	J	302	IPA	2	0

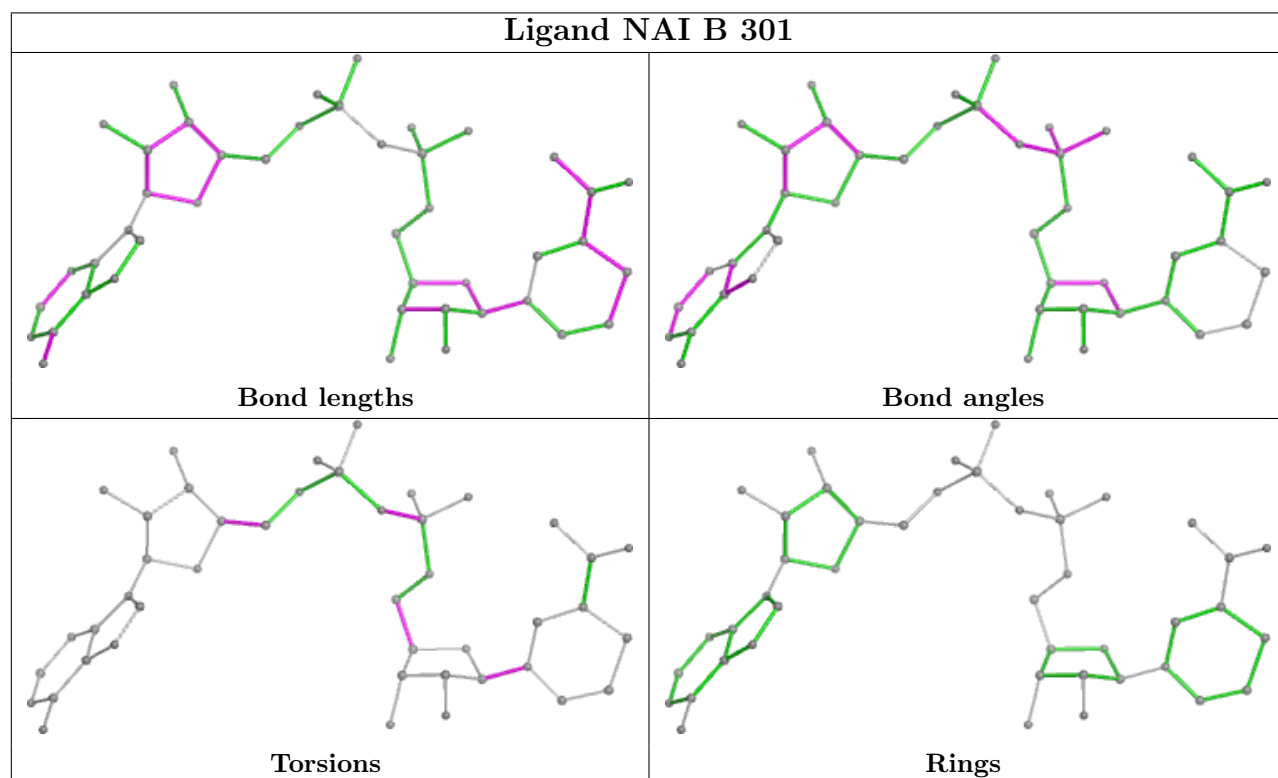
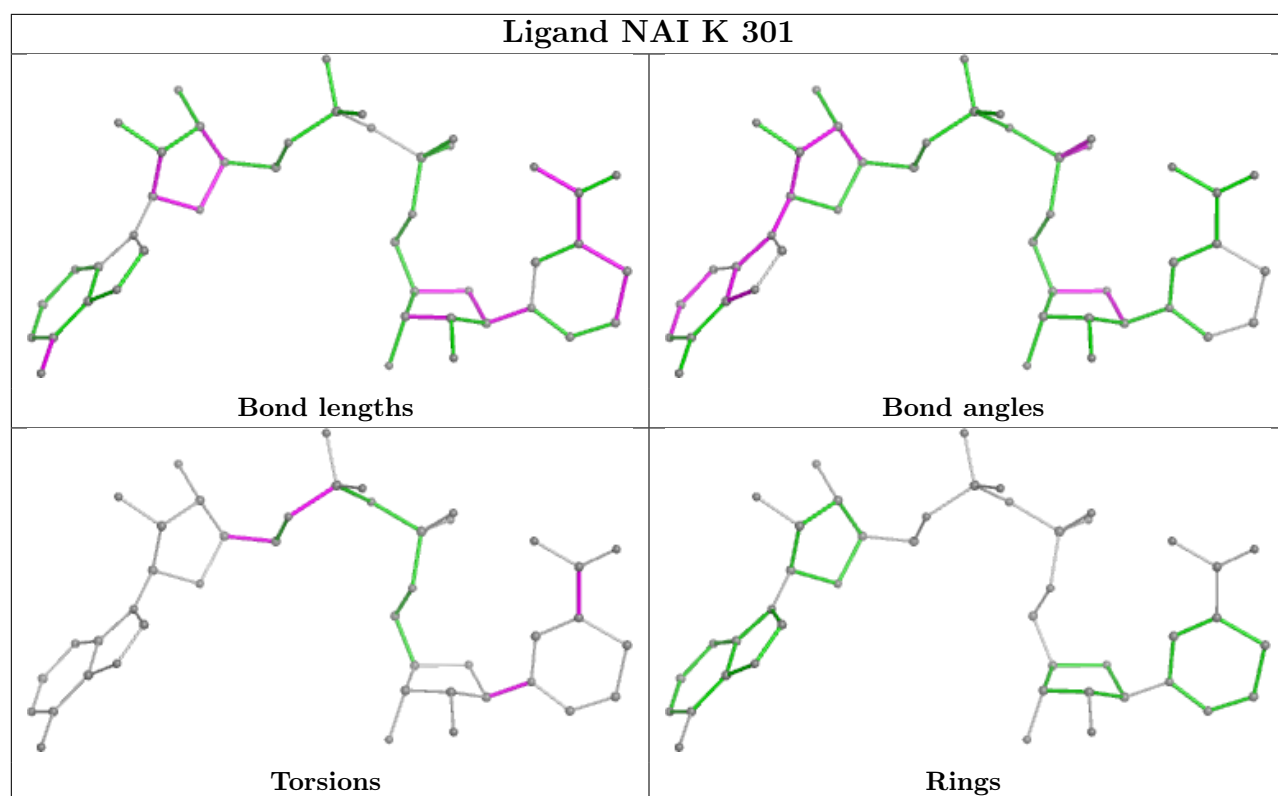
Continued on next page...

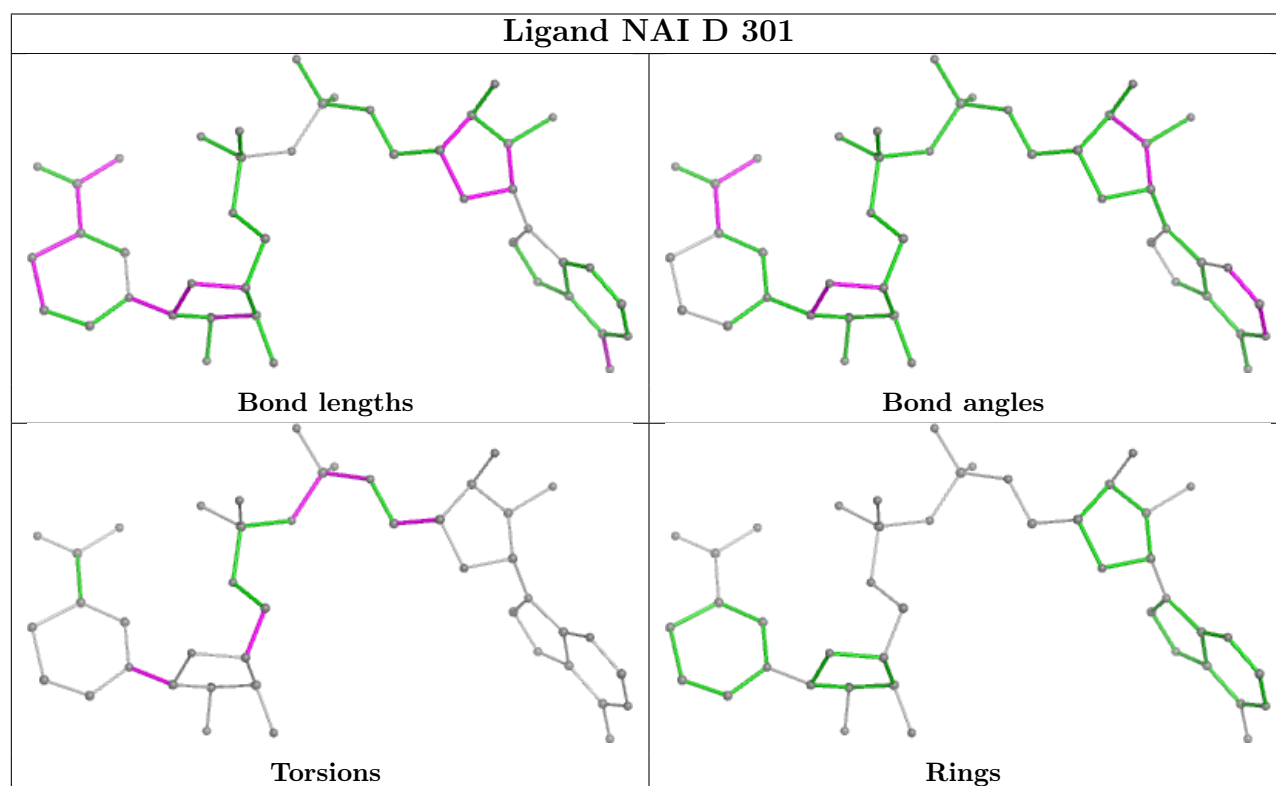
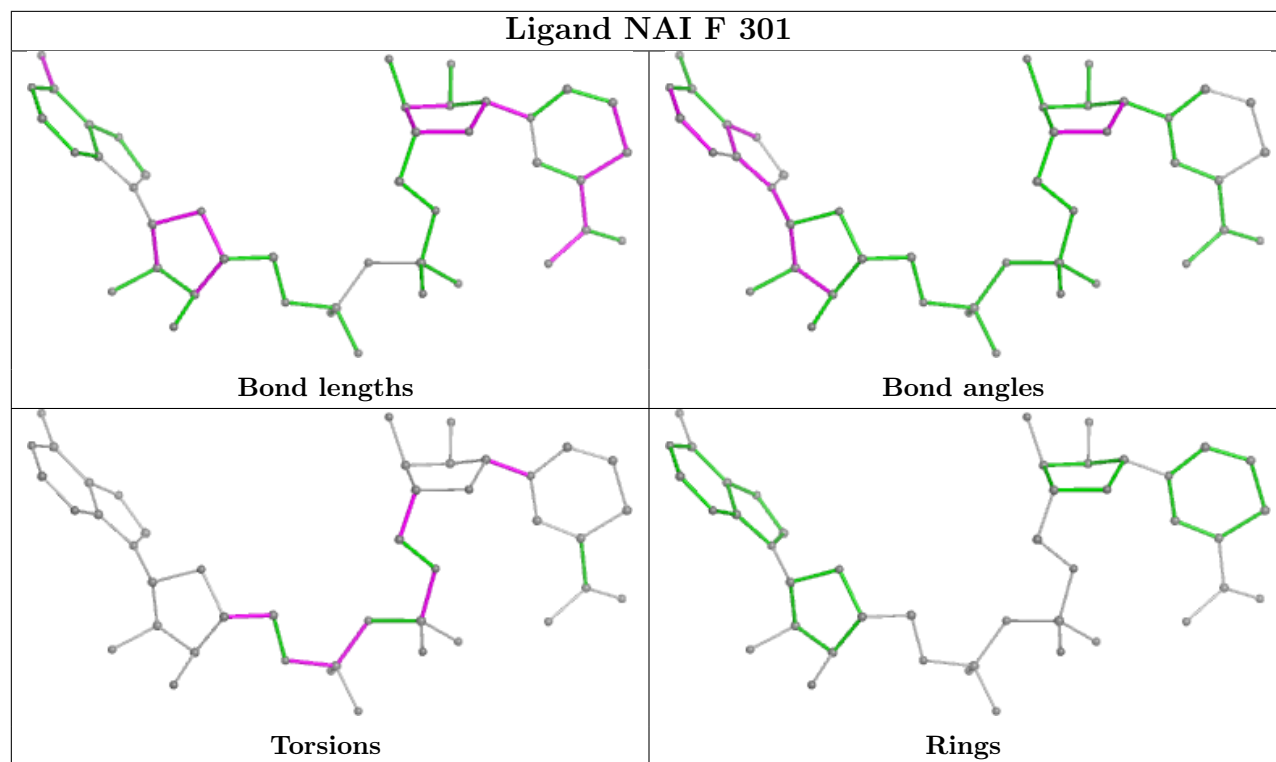
Continued from previous page...

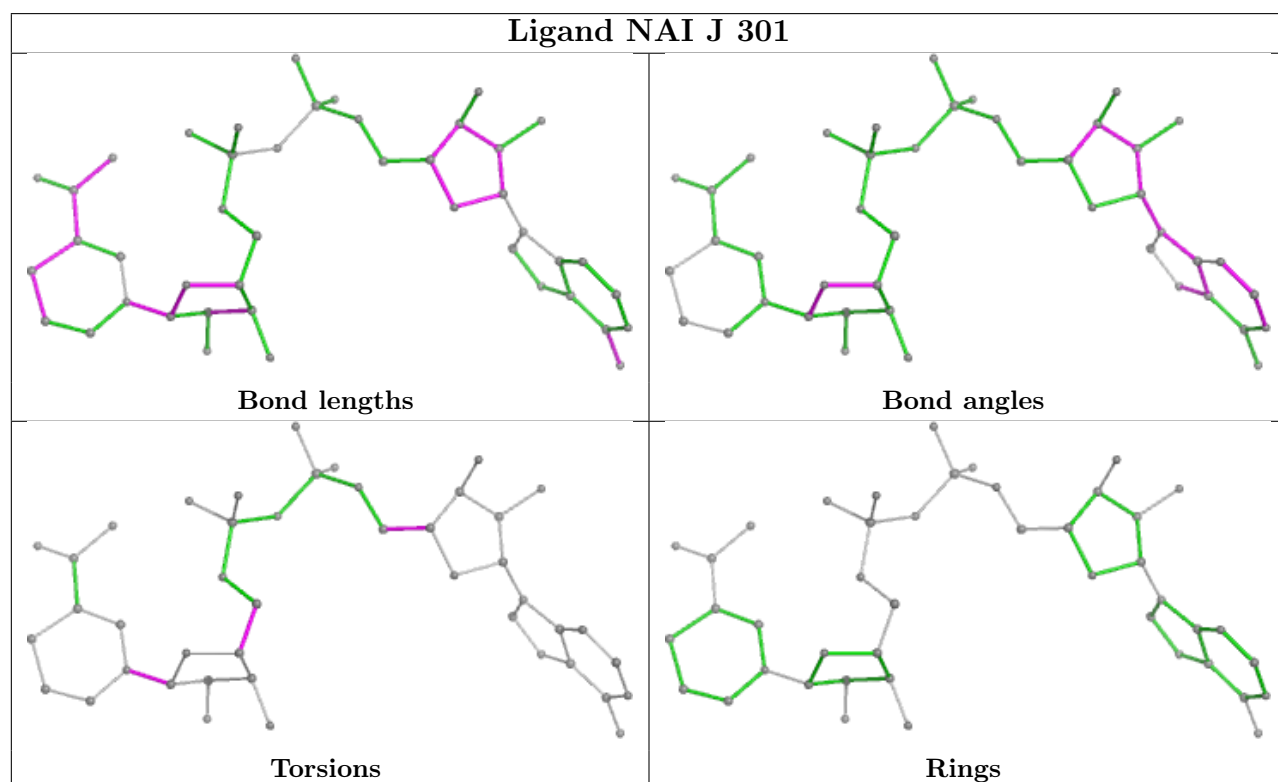
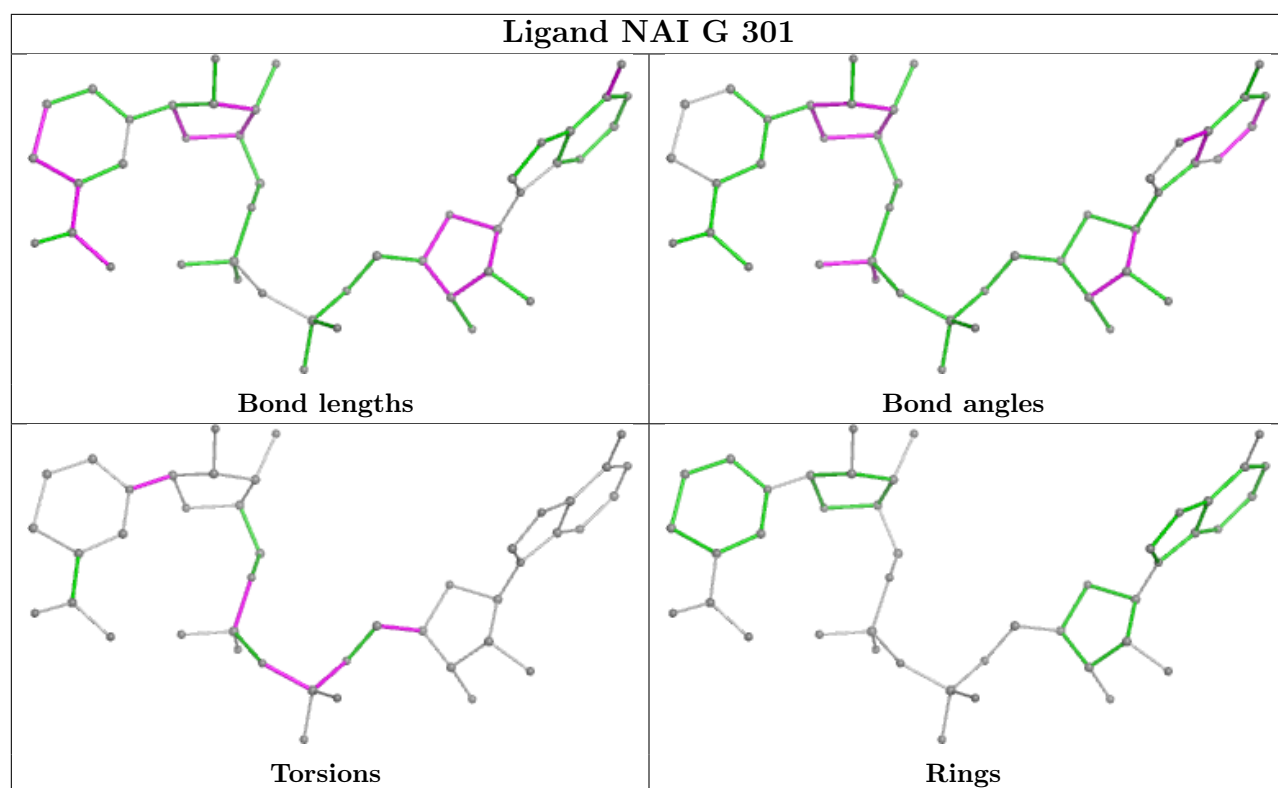
Mol	Chain	Res	Type	Clashes	Symm-Clashes
2	B	301	NAI	3	0
2	F	301	NAI	3	0
3	C	302	IPA	3	0
2	D	301	NAI	3	0
3	L	303	IPA	1	0
3	G	303	IPA	1	0
2	G	301	NAI	3	0
3	D	302	IPA	2	0
3	K	302	IPA	1	0
3	K	303	IPA	4	0
2	J	301	NAI	3	0
3	F	302	IPA	3	0
3	H	304	IPA	1	0
3	I	303	IPA	1	0
3	I	304	IPA	3	0
2	A	301	NAI	3	0
2	I	301	NAI	5	0
3	E	303	IPA	3	0
2	E	301	NAI	6	0
3	B	302	IPA	3	0
3	G	302	IPA	5	0
2	C	301	NAI	6	0
3	A	302	IPA	2	0

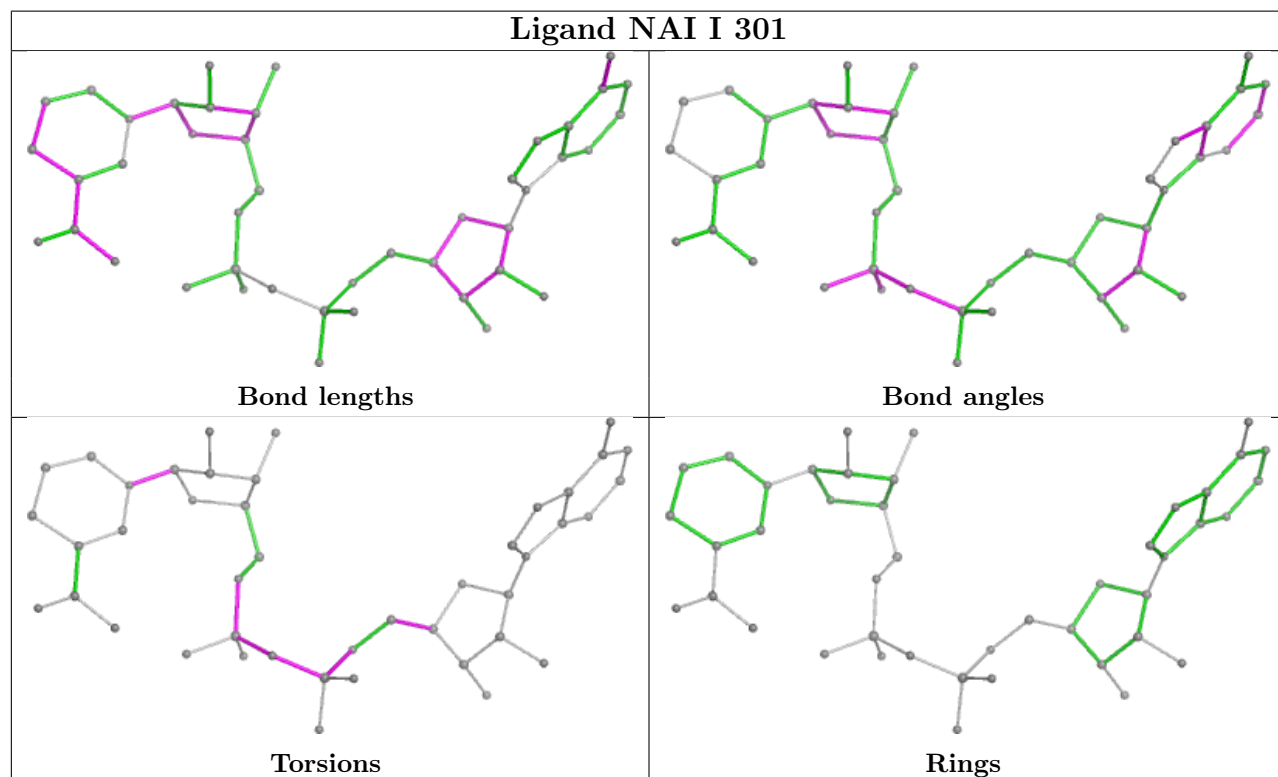
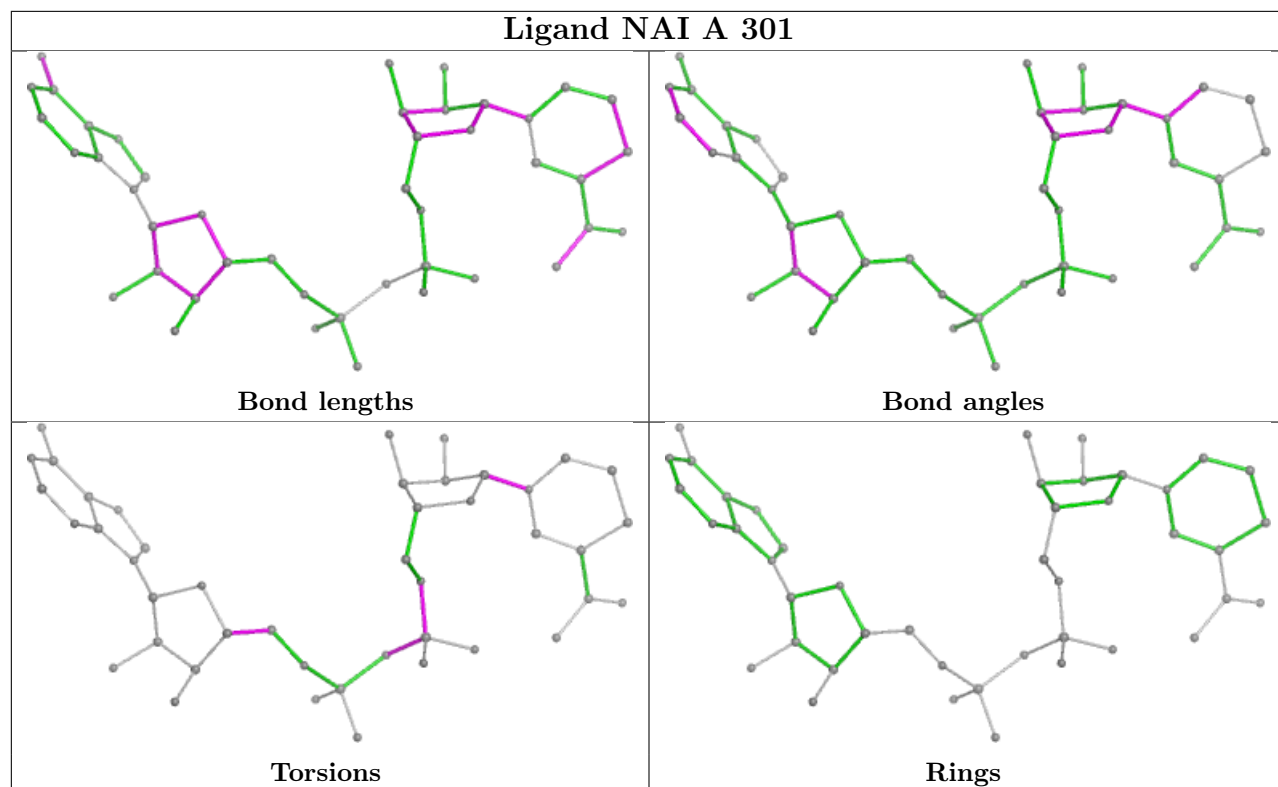
The following is a two-dimensional graphical depiction of Mogul quality analysis of bond lengths, bond angles, torsion angles, and ring geometry for all instances of the Ligand of Interest. In addition, ligands with molecular weight > 250 and outliers as shown on the validation Tables will also be included. For torsion angles, if less than 5% of the Mogul distribution of torsion angles is within 10 degrees of the torsion angle in question, then that torsion angle is considered an outlier. Any bond that is central to one or more torsion angles identified as an outlier by Mogul will be highlighted in the graph. For rings, the root-mean-square deviation (RMSD) between the ring in question and similar rings identified by Mogul is calculated over all ring torsion angles. If the average RMSD is greater than 60 degrees and the minimal RMSD between the ring in question and any Mogul-identified rings is also greater than 60 degrees, then that ring is considered an outlier. The outliers are highlighted in purple. The color gray indicates Mogul did not find sufficient equivalents in the CSD to analyse the geometry.

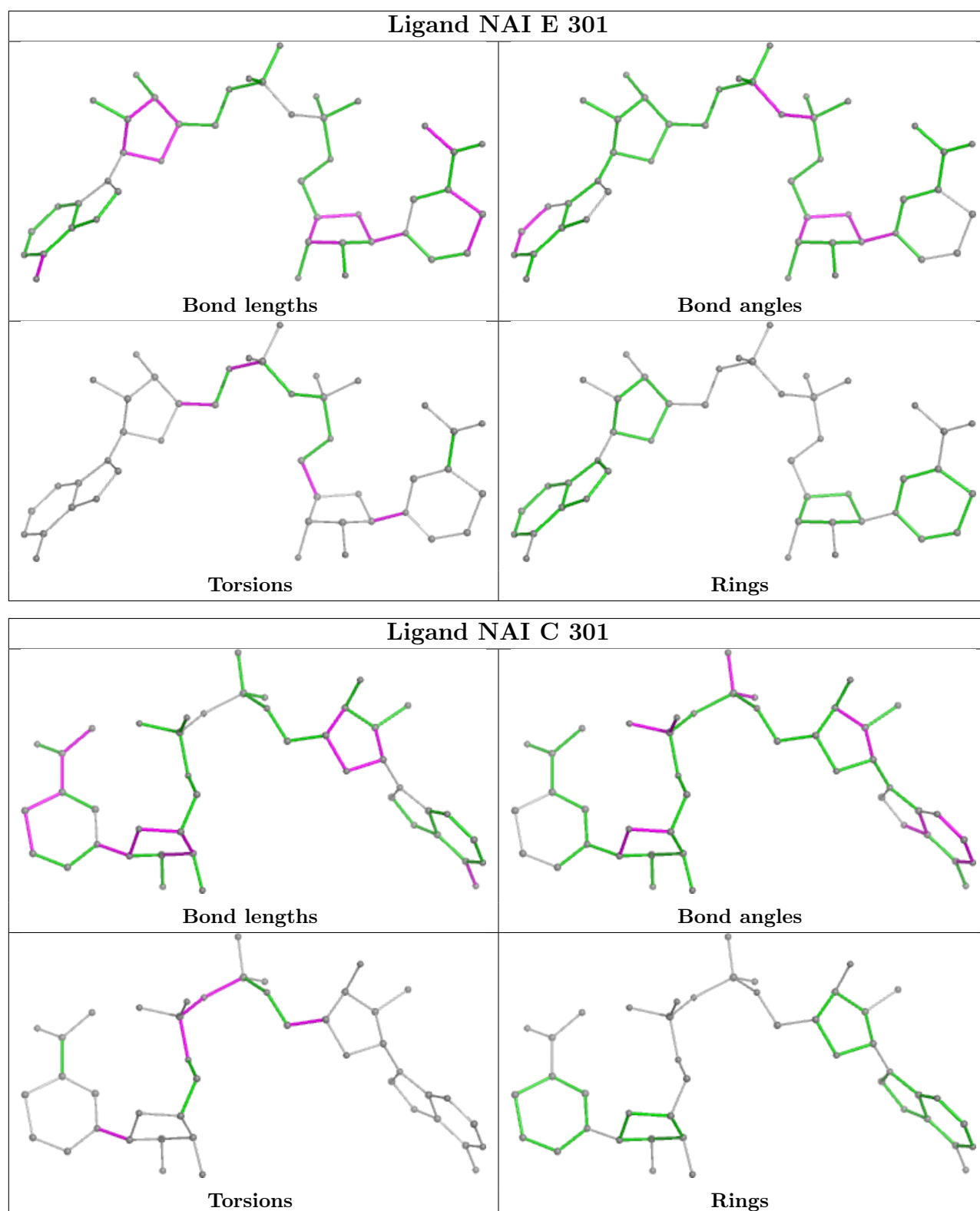












5.7 Other polymers [\(i\)](#)

There are no such residues in this entry.

5.8 Polymer linkage issues

There are no chain breaks in this entry.

6 Fit of model and data [i](#)

6.1 Protein, DNA and RNA chains [i](#)

In the following table, the column labelled ‘#RSRZ > 2’ contains the number (and percentage) of RSRZ outliers, followed by percent RSRZ outliers for the chain as percentile scores relative to all X-ray entries and entries of similar resolution. The OWAB column contains the minimum, median, 95th percentile and maximum values of the occupancy-weighted average B-factor per residue. The column labelled ‘Q < 0.9’ lists the number of (and percentage) of residues with an average occupancy less than 0.9.

Mol	Chain	Analysed	<RSRZ>	#RSRZ>2	OWAB(Å ²)	Q<0.9
1	A	248/263 (94%)	-0.28	3 (1%) 79 83	24, 32, 48, 64	0
1	B	253/263 (96%)	-0.32	3 (1%) 79 83	22, 31, 47, 72	0
1	C	257/263 (97%)	-0.18	11 (4%) 35 42	20, 30, 54, 96	0
1	D	250/263 (95%)	-0.17	6 (2%) 59 66	22, 30, 50, 79	0
1	E	248/263 (94%)	-0.09	10 (4%) 38 45	24, 33, 52, 73	0
1	F	253/263 (96%)	-0.32	6 (2%) 59 66	22, 32, 52, 90	0
1	G	257/263 (97%)	-0.19	7 (2%) 54 62	22, 33, 51, 90	0
1	H	252/263 (95%)	-0.07	12 (4%) 30 37	23, 34, 61, 100	0
1	I	243/263 (92%)	-0.10	5 (2%) 63 70	26, 42, 61, 72	0
1	J	253/263 (96%)	-0.35	6 (2%) 59 66	24, 32, 49, 78	0
1	K	257/263 (97%)	-0.22	10 (3%) 39 46	23, 31, 51, 90	0
1	L	246/263 (93%)	-0.18	8 (3%) 46 53	24, 34, 51, 75	0
All	All	3017/3156 (95%)	-0.21	87 (2%) 51 58	20, 32, 55, 100	0

The worst 5 of 87 RSRZ outliers are listed below:

Mol	Chain	Res	Type	RSRZ
1	K	206	PRO	7.2
1	H	206	PRO	5.7
1	C	206	PRO	5.6
1	K	207	LEU	5.5
1	C	207	LEU	5.2

6.2 Non-standard residues in protein, DNA, RNA chains [i](#)

There are no non-standard protein/DNA/RNA residues in this entry.

6.3 Carbohydrates [i](#)

There are no monosaccharides in this entry.

6.4 Ligands [i](#)

In the following table, the Atoms column lists the number of modelled atoms in the group and the number defined in the chemical component dictionary. The B-factors column lists the minimum, median, 95th percentile and maximum values of B factors of atoms in the group. The column labelled 'Q< 0.9' lists the number of atoms with occupancy less than 0.9.

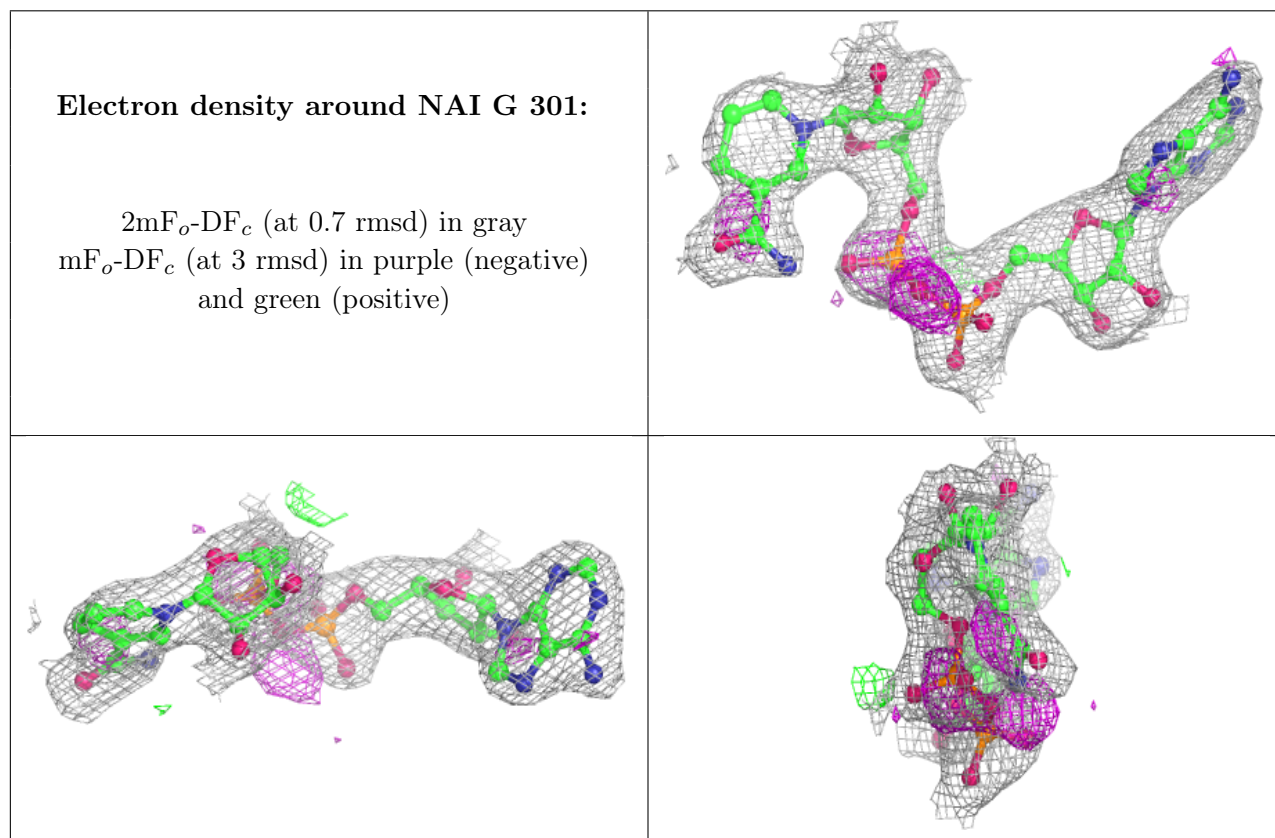
Mol	Type	Chain	Res	Atoms	RSCC	RSR	B-factors(Å ²)	Q<0.9
2	NAI	G	301	44/44	0.93	0.14	37,46,53,62	0
4	MG	L	302	1/1	0.93	0.09	33,33,33,33	0
3	IPA	C	302	4/4	0.94	0.18	31,31,35,35	0
3	IPA	H	303	4/4	0.94	0.21	30,31,33,37	0
3	IPA	H	304	4/4	0.94	0.15	30,31,36,37	0
3	IPA	B	303	4/4	0.94	0.15	31,36,37,43	0
3	IPA	E	304	4/4	0.95	0.15	30,33,33,39	0
3	IPA	J	302	4/4	0.95	0.16	36,38,41,45	0
4	MG	D	303	1/1	0.95	0.06	36,36,36,36	0
2	NAI	F	301	44/44	0.95	0.09	30,37,45,48	0
3	IPA	G	303	4/4	0.96	0.11	36,40,40,48	0
3	IPA	K	302	4/4	0.96	0.12	23,37,40,43	0
4	MG	C	303	1/1	0.96	0.08	38,38,38,38	0
2	NAI	K	301	44/44	0.96	0.12	31,41,55,61	0
3	IPA	G	302	4/4	0.96	0.15	33,36,39,40	0
3	IPA	D	302	4/4	0.97	0.15	26,28,29,30	0
3	IPA	E	303	4/4	0.97	0.20	28,29,30,31	0
2	NAI	B	301	44/44	0.97	0.07	29,39,44,52	0
2	NAI	H	301	44/44	0.97	0.08	28,37,43,45	0
2	NAI	I	301	44/44	0.97	0.09	38,48,54,60	0
2	NAI	J	301	44/44	0.97	0.09	29,38,43,46	0
2	NAI	C	301	44/44	0.97	0.09	31,38,44,51	0
2	NAI	L	301	44/44	0.97	0.08	27,35,41,42	0
3	IPA	A	302	4/4	0.97	0.18	31,33,36,37	0
3	IPA	K	303	4/4	0.97	0.17	27,27,28,32	0
3	IPA	L	304	4/4	0.97	0.20	32,32,34,34	0
3	IPA	B	302	4/4	0.97	0.22	29,30,30,31	0
2	NAI	E	301	44/44	0.97	0.09	29,36,41,48	0
2	NAI	A	301	44/44	0.97	0.09	26,35,40,48	0
3	IPA	A	303	4/4	0.98	0.11	35,35,36,46	0
2	NAI	D	301	44/44	0.98	0.08	24,35,39,45	0
3	IPA	L	303	4/4	0.98	0.12	25,29,33,34	0

Continued on next page...

Continued from previous page...

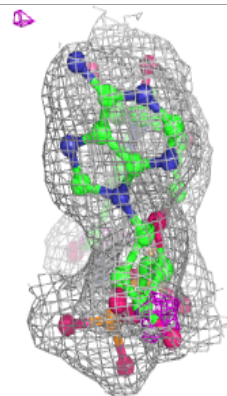
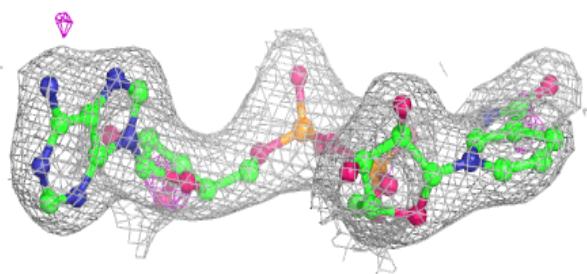
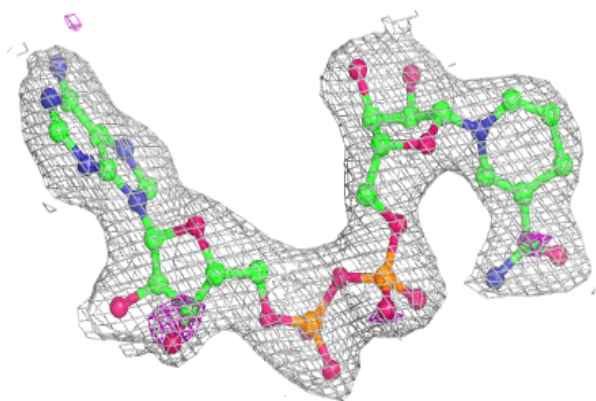
Mol	Type	Chain	Res	Atoms	RSCC	RSR	B-factors(\AA^2)	Q<0.9
3	IPA	C	304	4/4	0.98	0.13	31,38,38,40	0
3	IPA	F	302	4/4	0.98	0.16	27,28,29,30	0
3	IPA	I	303	4/4	0.98	0.13	34,35,39,41	0
4	MG	I	302	1/1	0.98	0.16	37,37,37,37	0
3	IPA	F	303	4/4	0.98	0.10	22,30,31,32	0
4	MG	H	302	1/1	0.99	0.12	28,28,28,28	0
3	IPA	I	304	4/4	0.99	0.17	32,35,36,38	0
4	MG	E	302	1/1	0.99	0.12	30,30,30,30	0

The following is a graphical depiction of the model fit to experimental electron density of all instances of the Ligand of Interest. In addition, ligands with molecular weight > 250 and outliers as shown on the geometry validation Tables will also be included. Each fit is shown from different orientation to approximate a three-dimensional view.

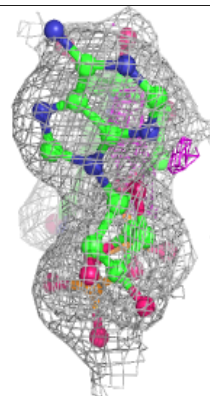
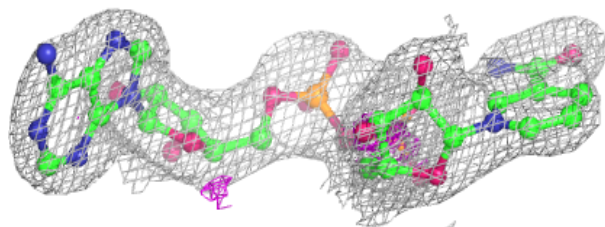
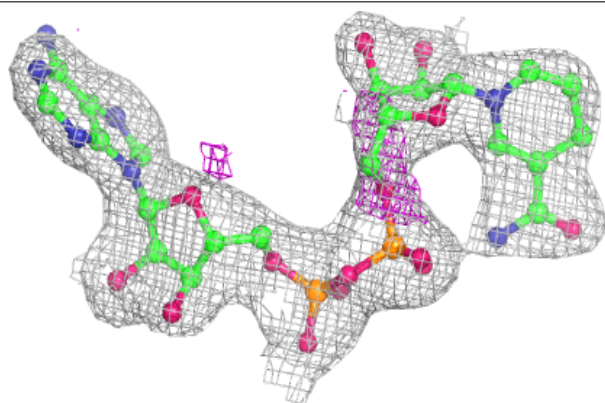


Electron density around NAI F 301:

$2mF_o-DF_c$ (at 0.7 rmsd) in gray
 mF_o-DF_c (at 3 rmsd) in purple (negative)
and green (positive)

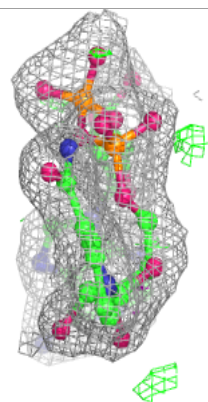
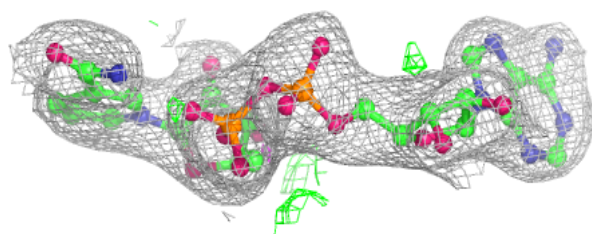
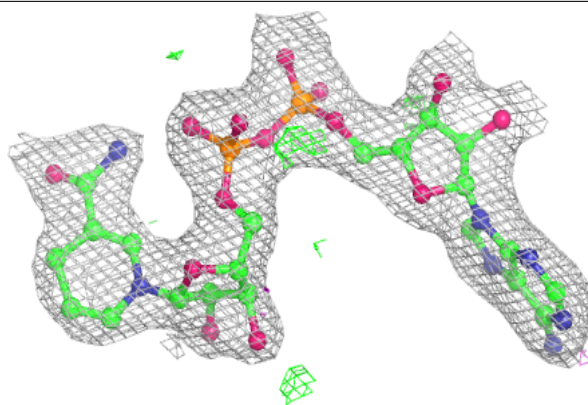
**Electron density around NAI K 301:**

$2mF_o-DF_c$ (at 0.7 rmsd) in gray
 mF_o-DF_c (at 3 rmsd) in purple (negative)
and green (positive)

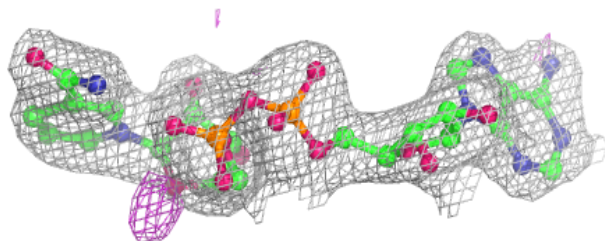
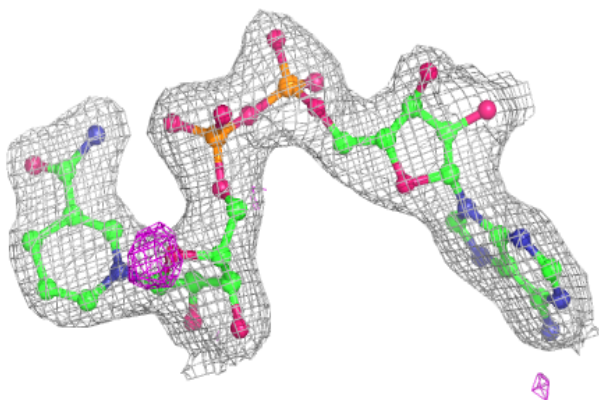


Electron density around NAI B 301:

$2mF_o-DF_c$ (at 0.7 rmsd) in gray
 mF_o-DF_c (at 3 rmsd) in purple (negative)
and green (positive)

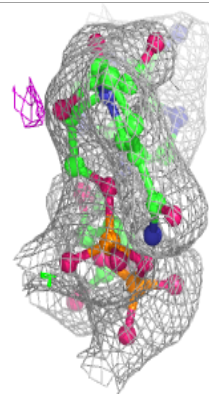
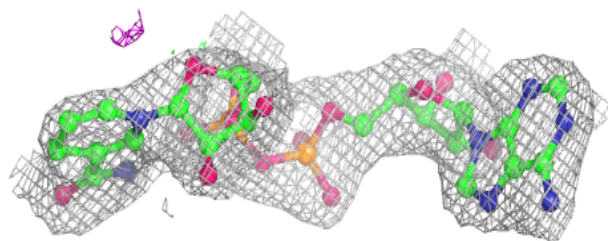
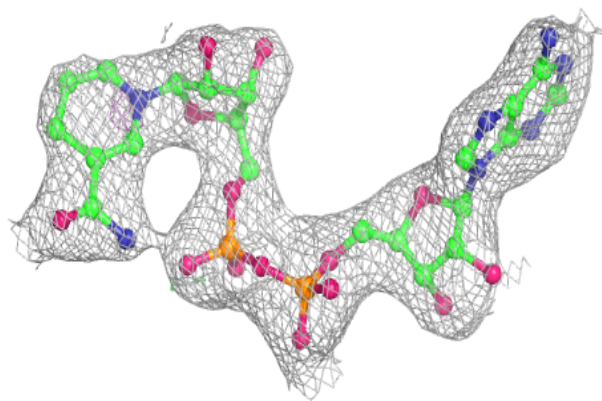
**Electron density around NAI H 301:**

$2mF_o-DF_c$ (at 0.7 rmsd) in gray
 mF_o-DF_c (at 3 rmsd) in purple (negative)
and green (positive)

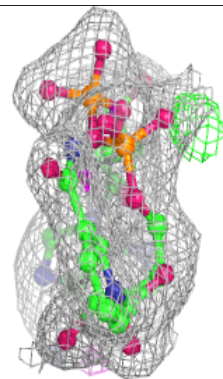
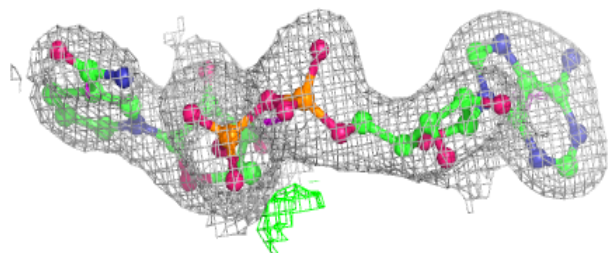
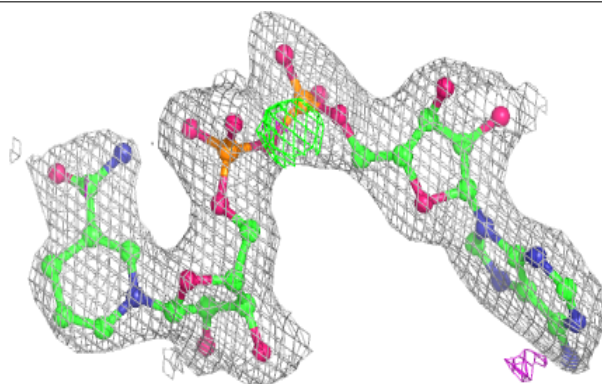


Electron density around NAI I 301:

$2mF_o-DF_c$ (at 0.7 rmsd) in gray
 mF_o-DF_c (at 3 rmsd) in purple (negative)
and green (positive)

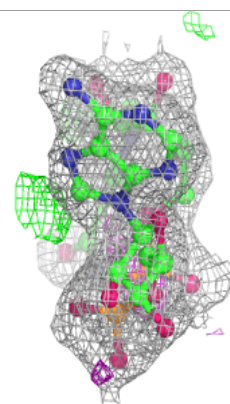
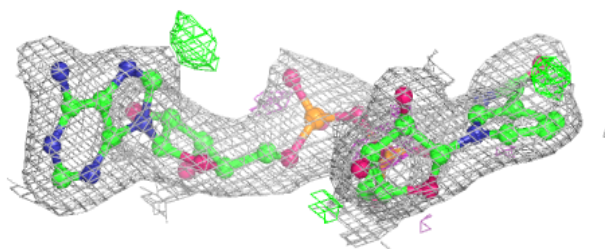
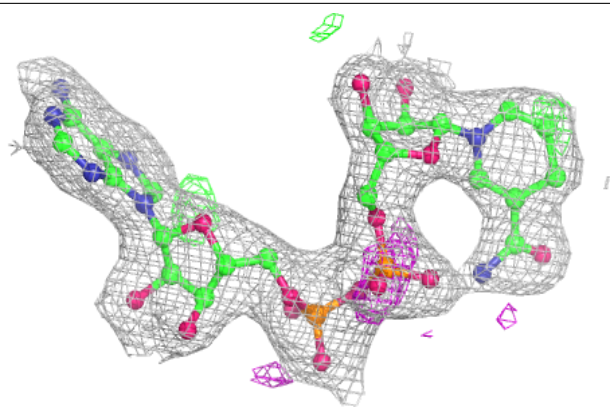
**Electron density around NAI J 301:**

$2mF_o-DF_c$ (at 0.7 rmsd) in gray
 mF_o-DF_c (at 3 rmsd) in purple (negative)
and green (positive)

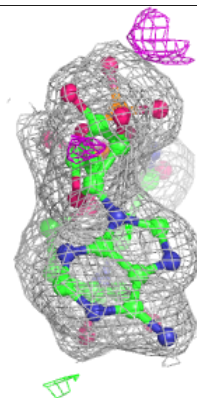
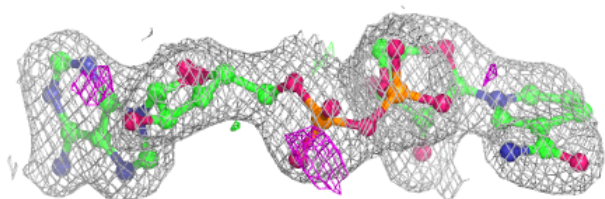
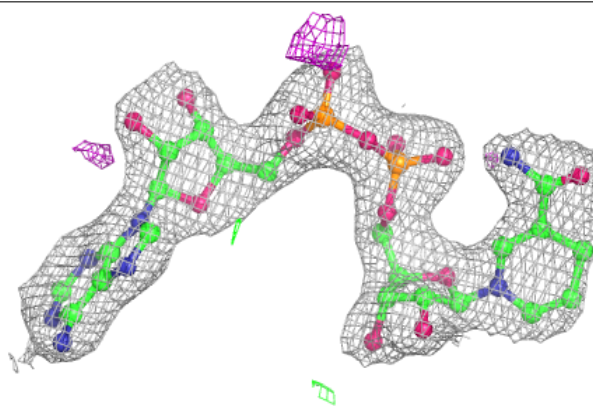


Electron density around NAI C 301:

$2mF_o-DF_c$ (at 0.7 rmsd) in gray
 mF_o-DF_c (at 3 rmsd) in purple (negative)
and green (positive)

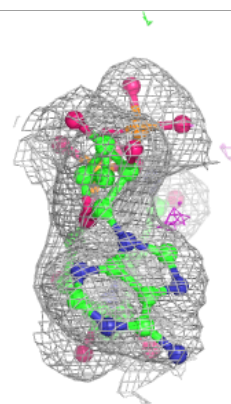
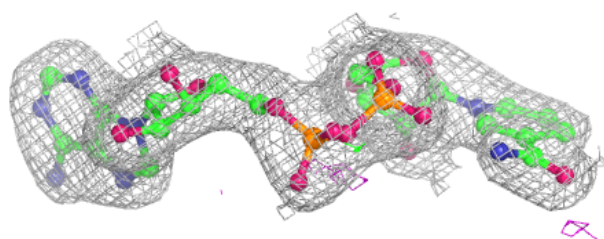
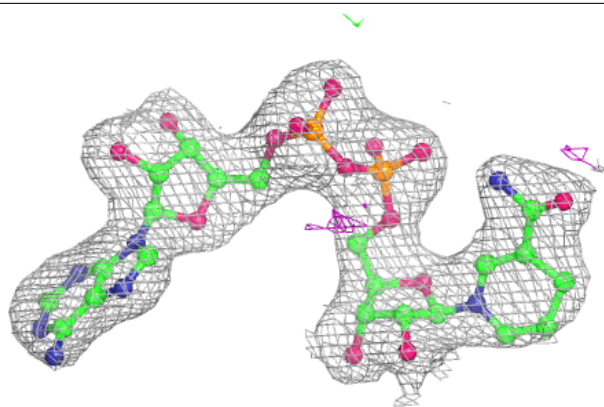
**Electron density around NAI L 301:**

$2mF_o-DF_c$ (at 0.7 rmsd) in gray
 mF_o-DF_c (at 3 rmsd) in purple (negative)
and green (positive)

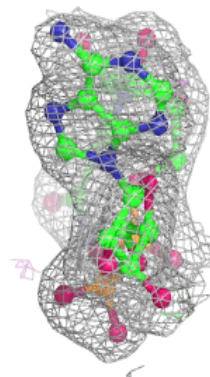
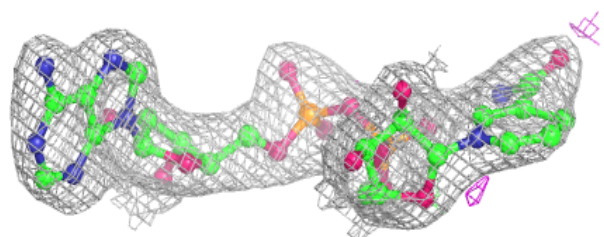
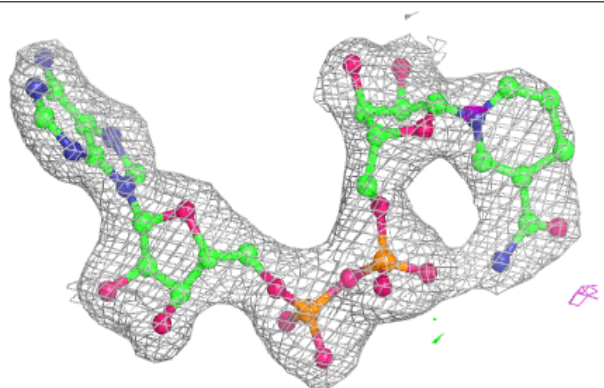


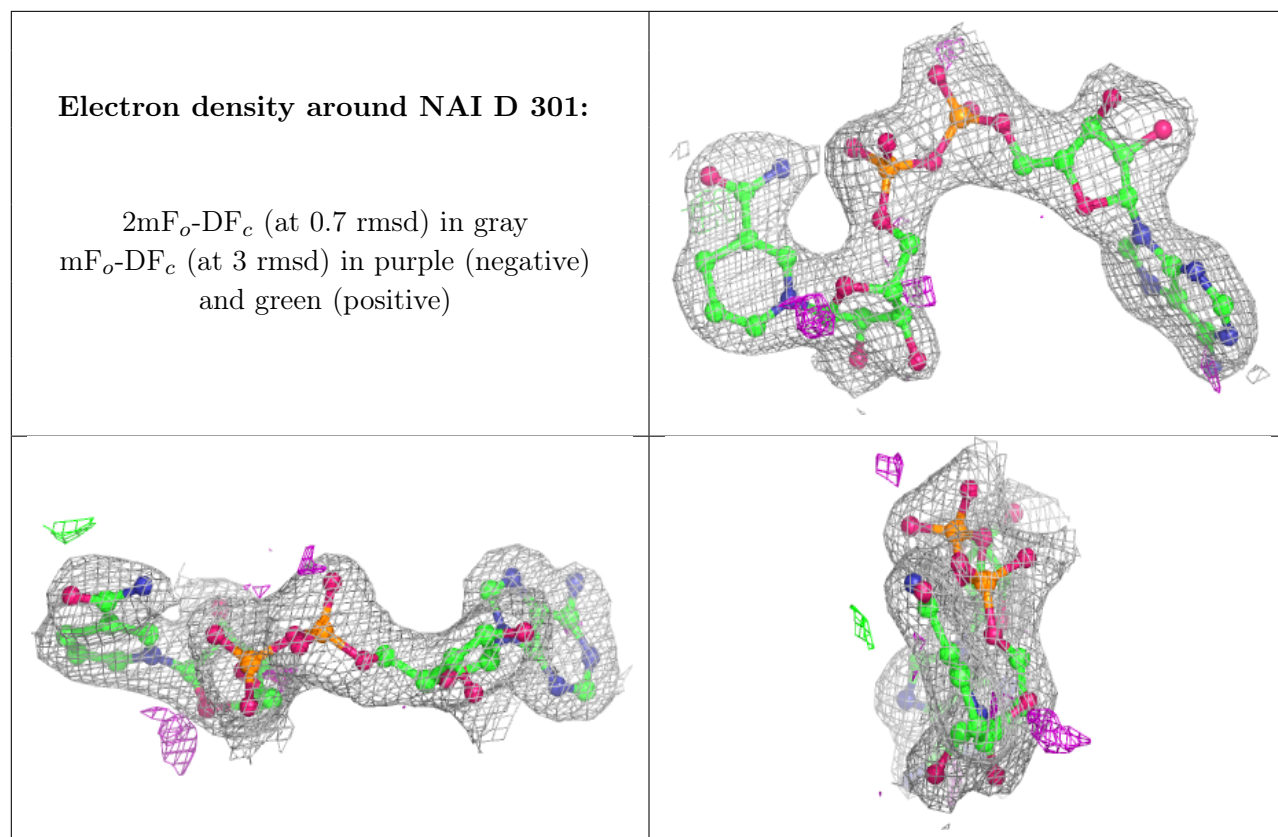
Electron density around NAI E 301:

$2mF_o-DF_c$ (at 0.7 rmsd) in gray
 mF_o-DF_c (at 3 rmsd) in purple (negative)
and green (positive)

**Electron density around NAI A 301:**

$2mF_o-DF_c$ (at 0.7 rmsd) in gray
 mF_o-DF_c (at 3 rmsd) in purple (negative)
and green (positive)





6.5 Other polymers [i](#)

There are no such residues in this entry.