



Full wwPDB X-ray Structure Validation Report ⓘ

Feb 6, 2024 – 10:40 AM EST

PDB ID : 2H3P
Title : Crystal structure of murine carnitine acetyltransferase in complex with carnitine and acetyl-CoA
Authors : Hsiao, Y.S.; Jogl, G.; Tong, L.
Deposited on : 2006-05-22
Resolution : 2.20 Å(reported)

This is a Full wwPDB X-ray Structure Validation Report for a publicly released PDB entry.

We welcome your comments at validation@mail.wwpdb.org

A user guide is available at

<https://www.wwpdb.org/validation/2017/XrayValidationReportHelp>

with specific help available everywhere you see the ⓘ symbol.

The types of validation reports are described at

<http://www.wwpdb.org/validation/2017/FAQs#types>.

The following versions of software and data (see [references ⓘ](#)) were used in the production of this report:

MolProbity : 4.02b-467
Mogul : 1.8.5 (274361), CSD as541be (2020)
Xtriage (Phenix) : 1.13
EDS : 2.36
buster-report : 1.1.7 (2018)
Percentile statistics : 20191225.v01 (using entries in the PDB archive December 25th 2019)
Refmac : 5.8.0158
CCP4 : 7.0.044 (Gargrove)
Ideal geometry (proteins) : Engh & Huber (2001)
Ideal geometry (DNA, RNA) : Parkinson et al. (1996)
Validation Pipeline (wwPDB-VP) : 2.36

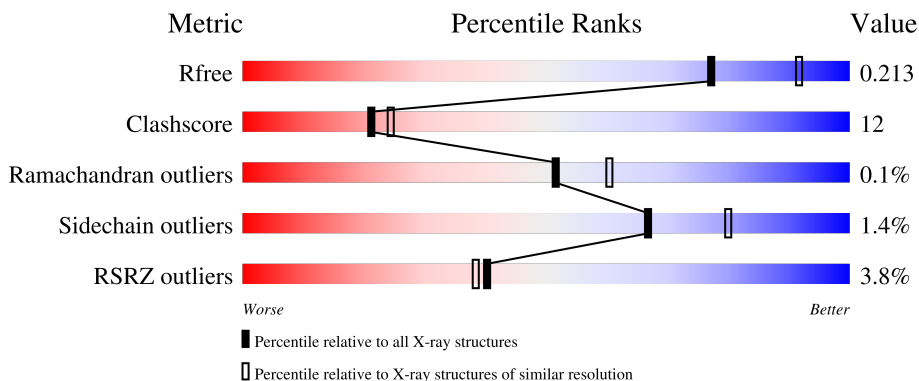
1 Overall quality at a glance

The following experimental techniques were used to determine the structure:

X-RAY DIFFRACTION

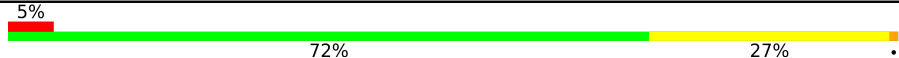
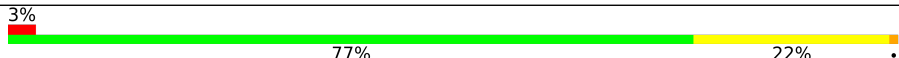
The reported resolution of this entry is 2.20 Å.

Percentile scores (ranging between 0-100) for global validation metrics of the entry are shown in the following graphic. The table shows the number of entries on which the scores are based.



Metric	Whole archive (#Entries)	Similar resolution (#Entries, resolution range(Å))
R_{free}	130704	4898 (2.20-2.20)
Clashscore	141614	5594 (2.20-2.20)
Ramachandran outliers	138981	5503 (2.20-2.20)
Sidechain outliers	138945	5504 (2.20-2.20)
RSRZ outliers	127900	4800 (2.20-2.20)

The table below summarises the geometric issues observed across the polymeric chains and their fit to the electron density. The red, orange, yellow and green segments of the lower bar indicate the fraction of residues that contain outliers for ≥ 3 , 2, 1 and 0 types of geometric quality criteria respectively. A grey segment represents the fraction of residues that are not modelled. The numeric value for each fraction is indicated below the corresponding segment, with a dot representing fractions $\leq 5\%$. The upper red bar (where present) indicates the fraction of residues that have poor fit to the electron density. The numeric value is given above the bar.

Mol	Chain	Length	Quality of chain
1	A	599	
1	B	599	

2 Entry composition [i](#)

There are 5 unique types of molecules in this entry. The entry contains 11109 atoms, of which 0 are hydrogens and 0 are deuteriums.

In the tables below, the ZeroOcc column contains the number of atoms modelled with zero occupancy, the AltConf column contains the number of residues with at least one atom in alternate conformation and the Trace column contains the number of residues modelled with at most 2 atoms.

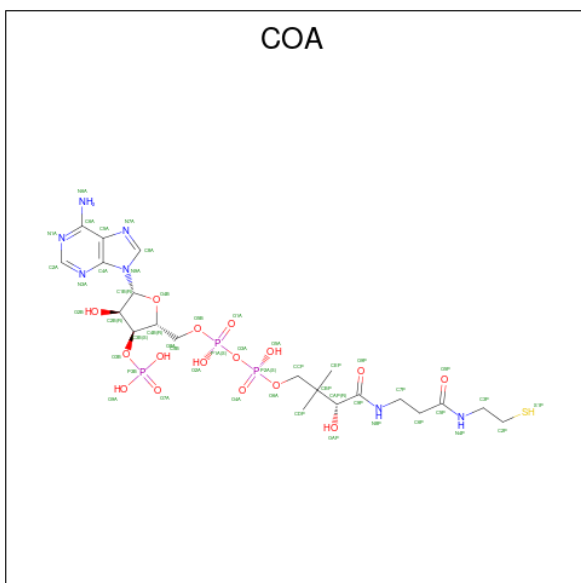
- Molecule 1 is a protein called carnitine acetyltransferase.

Mol	Chain	Residues	Atoms					ZeroOcc	AltConf	Trace
			Total	C	N	O	S			
1	A	599	4781	3048	825	879	29	0	0	0
1	B	599	4781	3048	825	879	29	0	0	0

There are 6 discrepancies between the modelled and reference sequences:

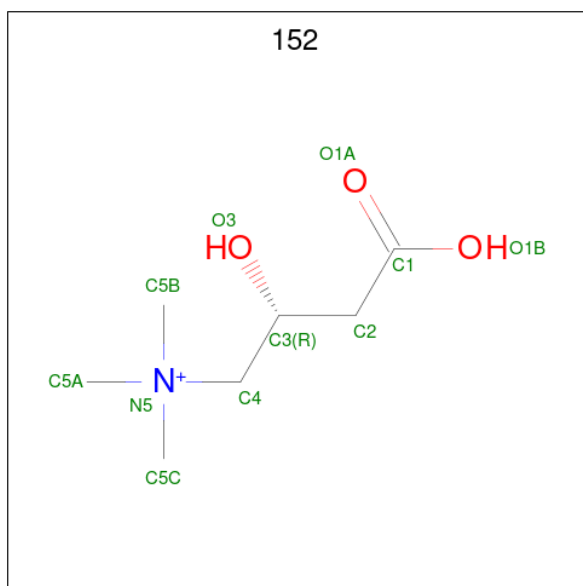
Chain	Residue	Modelled	Actual	Comment	Reference
A	27	SER	-	cloning artifact	UNP Q3V1Y3
A	28	HIS	-	cloning artifact	UNP Q3V1Y3
A	29	MET	-	cloning artifact	UNP Q3V1Y3
B	27	SER	-	cloning artifact	UNP Q3V1Y3
B	28	HIS	-	cloning artifact	UNP Q3V1Y3
B	29	MET	-	cloning artifact	UNP Q3V1Y3

- Molecule 2 is COENZYME A (three-letter code: COA) (formula: $C_{21}H_{36}N_7O_{16}P_3S$).



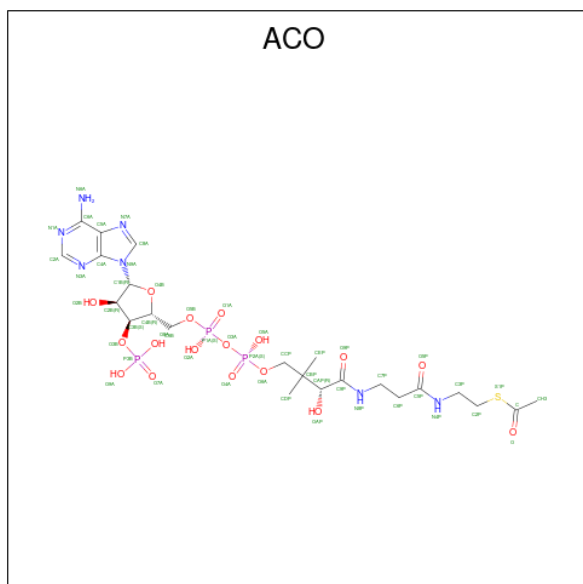
Mol	Chain	Residues	Atoms					ZeroOcc	AltConf	
			Total	C	N	O	P			S
2	A	1	48	21	7	16	3	1	0	0

- Molecule 3 is CARNITINE (three-letter code: 152) (formula: $C_7H_{16}NO_3$).



Mol	Chain	Residues	Atoms				ZeroOcc	AltConf
			Total	C	N	O		
3	A	1	11	7	1	3	0	0
3	B	1	11	7	1	3	0	0

- Molecule 4 is ACETYL COENZYME *A (three-letter code: ACO) (formula: $C_{23}H_{38}N_7O_{17}P_3S$).



Mol	Chain	Residues	Atoms					ZeroOcc	AltConf	
			Total	C	N	O	P			S
4	B	1	51	23	7	17	3	1	0	0

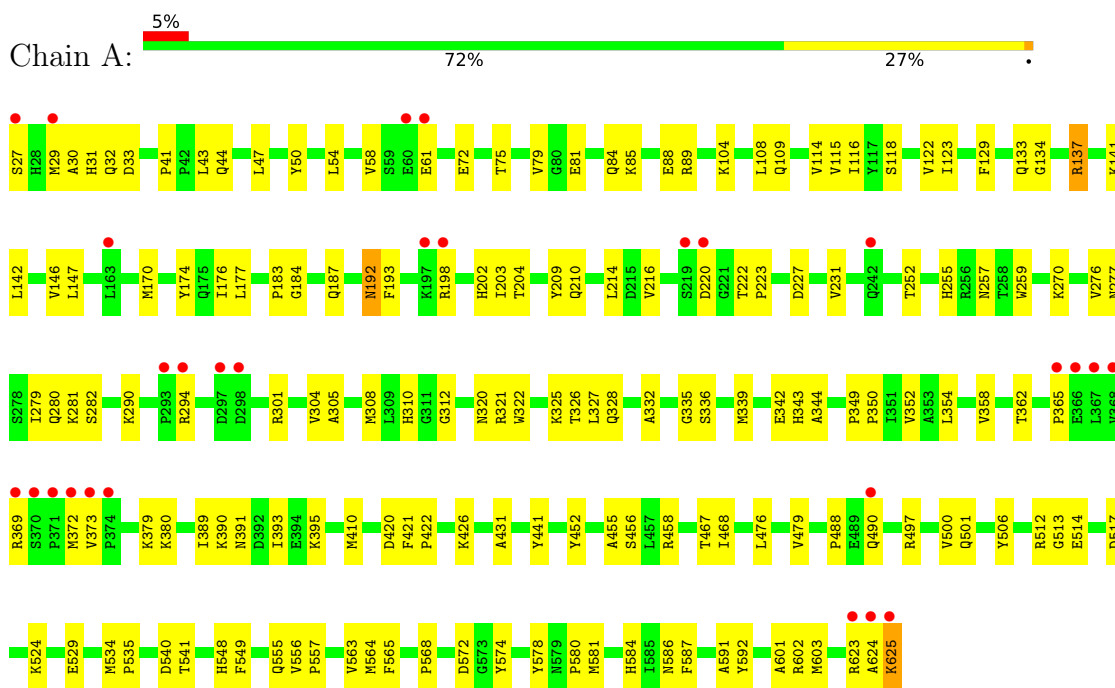
- Molecule 5 is water.

Mol	Chain	Residues	Atoms		ZeroOcc	AltConf
5	A	639	Total 639	O 639	0	0
5	B	787	Total 787	O 787	0	0

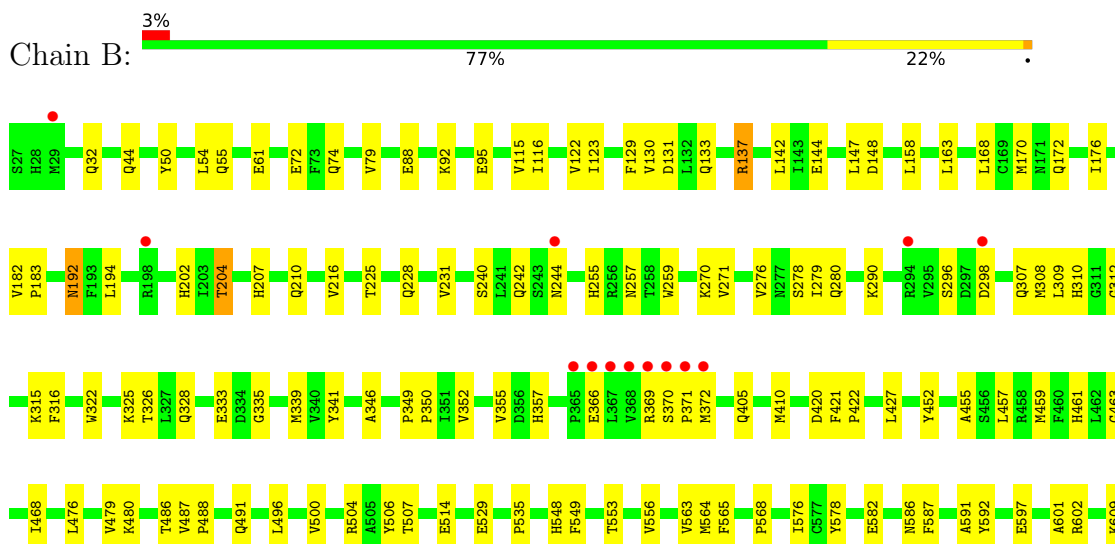
3 Residue-property plots

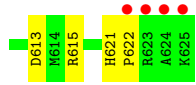
These plots are drawn for all protein, RNA, DNA and oligosaccharide chains in the entry. The first graphic for a chain summarises the proportions of the various outlier classes displayed in the second graphic. The second graphic shows the sequence view annotated by issues in geometry and electron density. Residues are color-coded according to the number of geometric quality criteria for which they contain at least one outlier: green = 0, yellow = 1, orange = 2 and red = 3 or more. A red dot above a residue indicates a poor fit to the electron density ($RSRZ > 2$). Stretches of 2 or more consecutive residues without any outlier are shown as a green connector. Residues present in the sample, but not in the model, are shown in grey.

- Molecule 1: carnitine acetyltransferase



- Molecule 1: carnitine acetyltransferase





4 Data and refinement statistics

Property	Value	Source
Space group	C 1 2 1	Depositor
Cell constants a, b, c, α , β , γ	163.90Å 89.24Å 122.64Å 90.00° 128.96° 90.00°	Depositor
Resolution (Å)	29.92 – 2.20 29.92 – 2.20	Depositor EDS
% Data completeness (in resolution range)	94.9 (29.92-2.20) 95.0 (29.92-2.20)	Depositor EDS
R_{merge}	0.04	Depositor
R_{sym}	(Not available)	Depositor
$\langle I/\sigma(I) \rangle$ ¹	5.96 (at 2.20Å)	Xtrriage
Refinement program	CNS 1.1	Depositor
R, R_{free}	0.170 , 0.223 0.163 , 0.213	Depositor DCC
R_{free} test set	5039 reflections (7.64%)	wwPDB-VP
Wilson B-factor (Å ²)	20.4	Xtrriage
Anisotropy	0.541	Xtrriage
Bulk solvent k_{sol} (e/Å ³), B_{sol} (Å ²)	0.33 , 57.6	EDS
L-test for twinning ²	$\langle L \rangle = 0.47$, $\langle L^2 \rangle = 0.30$	Xtrriage
Estimated twinning fraction	0.017 for h,-k,-h-l	Xtrriage
F_o, F_c correlation	0.95	EDS
Total number of atoms	11109	wwPDB-VP
Average B, all atoms (Å ²)	25.0	wwPDB-VP

Xtrriage's analysis on translational NCS is as follows: *The largest off-origin peak in the Patterson function is 4.03% of the height of the origin peak. No significant pseudotranslation is detected.*

¹Intensities estimated from amplitudes.

²Theoretical values of $\langle |L| \rangle$, $\langle L^2 \rangle$ for acentric reflections are 0.5, 0.333 respectively for untwinned datasets, and 0.375, 0.2 for perfectly twinned datasets.

5 Model quality

5.1 Standard geometry

Bond lengths and bond angles in the following residue types are not validated in this section: 152, ACO, COA

The Z score for a bond length (or angle) is the number of standard deviations the observed value is removed from the expected value. A bond length (or angle) with $|Z| > 5$ is considered an outlier worth inspection. RMSZ is the root-mean-square of all Z scores of the bond lengths (or angles).

Mol	Chain	Bond lengths		Bond angles	
		RMSZ	# Z >5	RMSZ	# Z >5
1	A	0.32	0/4897	0.52	0/6633
1	B	0.36	0/4897	0.57	0/6633
All	All	0.34	0/9794	0.54	0/13266

There are no bond length outliers.

There are no bond angle outliers.

There are no chirality outliers.

There are no planarity outliers.

5.2 Too-close contacts

In the following table, the Non-H and H(model) columns list the number of non-hydrogen atoms and hydrogen atoms in the chain respectively. The H(added) column lists the number of hydrogen atoms added and optimized by MolProbity. The Clashes column lists the number of clashes within the asymmetric unit, whereas Symm-Clashes lists symmetry-related clashes.

Mol	Chain	Non-H	H(model)	H(added)	Clashes	Symm-Clashes
1	A	4781	0	4754	128	0
1	B	4781	0	4754	104	0
2	A	48	0	32	3	0
3	A	11	0	15	1	0
3	B	11	0	15	1	0
4	B	51	0	34	4	0
5	A	639	0	0	23	0
5	B	787	0	0	25	0
All	All	11109	0	9604	234	0

The all-atom clashscore is defined as the number of clashes found per 1000 atoms (including hydrogen atoms). The all-atom clashscore for this structure is 12.

All (234) close contacts within the same asymmetric unit are listed below, sorted by their clash magnitude.

Atom-1	Atom-2	Interatomic distance (Å)	Clash overlap (Å)
1:B:457:LEU:HG	5:B:2044:HOH:O	1.71	0.90
1:A:534:MET:HE2	1:A:535:PRO:HD2	1.61	0.82
1:B:310:HIS:HD2	1:B:312:GLY:H	1.29	0.80
1:B:32:GLN:HE22	1:B:170:MET:H	1.33	0.77
1:A:349:PRO:HB2	1:A:350:PRO:HD3	1.67	0.77
1:B:144:GLU:HG2	5:B:1941:HOH:O	1.86	0.75
1:B:310:HIS:CD2	1:B:312:GLY:H	2.05	0.75
1:A:524:LYS:HG3	1:A:534:MET:HE1	1.70	0.73
1:A:534:MET:CE	1:A:535:PRO:HD2	2.18	0.73
1:B:349:PRO:HB2	1:B:350:PRO:HD3	1.72	0.71
1:B:163:LEU:HB2	1:B:168:LEU:HD11	1.73	0.70
1:A:290:LYS:HB3	5:A:1753:HOH:O	1.92	0.70
1:B:514:GLU:HG2	5:B:2137:HOH:O	1.92	0.70
1:A:322:TRP:H	1:A:328:GLN:HE22	1.41	0.68
1:B:244:ASN:HB2	5:B:1823:HOH:O	1.93	0.68
1:A:349:PRO:HD3	2:A:1502:COA:H31	1.76	0.67
1:A:122:VAL:HG22	1:A:564:MET:HG2	1.76	0.67
1:B:349:PRO:HD3	4:B:1602:ACO:H31	1.75	0.66
1:A:227:ASP:HB2	1:A:369:ARG:NH1	2.11	0.66
1:A:497:ARG:NH2	1:A:623:ARG:HG2	2.10	0.66
1:B:405:GLN:HG3	5:B:2371:HOH:O	1.95	0.65
1:A:455:ALA:HB2	1:A:468:ILE:HG13	1.80	0.64
1:A:322:TRP:H	1:A:328:GLN:NE2	1.96	0.64
1:A:602:ARG:HD2	5:A:2012:HOH:O	1.97	0.63
1:B:131:ASP:OD1	1:B:133:GLN:HG3	1.98	0.63
1:B:225:THR:H	1:B:228:GLN:NE2	1.96	0.63
1:A:220:ASP:OD2	1:A:222:THR:HG22	1.98	0.63
1:B:421:PHE:HB3	1:B:422:PRO:HD3	1.81	0.62
1:B:370:SER:HB2	1:B:371:PRO:HD2	1.82	0.62
1:A:32:GLN:HE22	1:A:170:MET:H	1.46	0.62
1:A:310:HIS:CD2	1:A:312:GLY:H	2.19	0.60
1:B:488:PRO:HD2	5:B:2365:HOH:O	2.02	0.60
1:A:204:THR:HG21	1:A:279:ILE:HA	1.85	0.59
1:B:487:VAL:HG13	1:B:491:GLN:HG2	1.86	0.58
1:A:44:GLN:HG3	5:A:1752:HOH:O	2.04	0.58
1:B:341:TYR:HE2	1:B:564:MET:HE1	1.69	0.58
1:A:391:ASN:O	1:A:395:LYS:HG2	2.04	0.58
1:B:122:VAL:HG22	1:B:564:MET:HG2	1.85	0.57
1:B:255:HIS:HD2	1:B:257:ASN:H	1.53	0.57
1:A:310:HIS:HD2	1:A:312:GLY:H	1.50	0.57

Continued on next page...

Continued from previous page...

Atom-1	Atom-2	Interatomic distance (Å)	Clash overlap (Å)
1:A:410:MET:HG2	1:A:601:ALA:HA	1.85	0.57
1:B:315:LYS:HG2	5:B:1930:HOH:O	2.05	0.57
1:A:129:PHE:HB2	1:A:134:GLY:HA3	1.87	0.56
1:A:514:GLU:HG2	5:A:1927:HOH:O	2.05	0.56
1:B:133:GLN:O	1:B:137:ARG:HB2	2.04	0.56
1:B:410:MET:HG2	1:B:601:ALA:HA	1.87	0.56
1:B:123:ILE:HG13	1:B:565:PHE:CE2	2.40	0.56
1:A:183:PRO:HG3	1:A:259:TRP:NE1	2.21	0.56
1:A:358:VAL:O	1:A:362:THR:HG23	2.06	0.56
1:A:227:ASP:HB2	1:A:369:ARG:HH11	1.70	0.55
1:A:257:ASN:HB3	5:A:2007:HOH:O	2.06	0.55
1:A:142:LEU:O	1:A:146:VAL:HG23	2.07	0.55
1:A:147:LEU:HD11	1:A:216:VAL:HB	1.89	0.54
1:A:30:ALA:HB3	5:A:1913:HOH:O	2.08	0.54
1:A:379:LYS:HD3	5:A:1770:HOH:O	2.07	0.54
1:A:555:GLN:OE1	1:A:557:PRO:HG3	2.07	0.54
1:A:421:PHE:HB3	1:A:422:PRO:HD3	1.90	0.54
1:A:203:ILE:HD11	1:A:214:LEU:HD23	1.89	0.54
1:B:163:LEU:HB3	1:B:168:LEU:HD21	1.89	0.54
1:B:366:GLU:HB3	1:B:369:ARG:HG3	1.90	0.54
1:A:129:PHE:CZ	1:A:335:GLY:HA2	2.42	0.53
1:B:366:GLU:HA	5:B:2311:HOH:O	2.07	0.53
1:A:255:HIS:CD2	1:A:257:ASN:H	2.27	0.53
1:B:322:TRP:H	1:B:328:GLN:NE2	2.06	0.53
1:B:609:LYS:HE2	1:B:613:ASP:OD1	2.09	0.53
1:A:84:GLN:O	1:A:88:GLU:HG3	2.09	0.53
1:A:255:HIS:HD2	1:A:257:ASN:H	1.54	0.53
1:A:270:LYS:HD3	5:A:1723:HOH:O	2.08	0.53
1:B:123:ILE:HG13	1:B:565:PHE:HE2	1.74	0.53
1:A:426:LYS:HG3	1:A:623:ARG:HH22	1.74	0.52
1:B:147:LEU:HD11	1:B:216:VAL:HB	1.90	0.52
1:A:512:ARG:HG3	1:A:512:ARG:HH11	1.74	0.52
1:B:122:VAL:HB	1:B:339:MET:HG2	1.92	0.52
1:A:501:GLN:HG2	5:A:1717:HOH:O	2.09	0.52
1:A:555:GLN:NE2	1:A:580:PRO:HG2	2.25	0.52
1:B:476:LEU:HD11	1:B:480:LYS:HE3	1.91	0.52
1:B:563:VAL:HB	1:B:586:ASN:HB3	1.90	0.52
1:A:29:MET:HG2	1:A:33:ASP:OD2	2.10	0.52
1:A:227:ASP:O	1:A:231:VAL:HG23	2.10	0.52
1:A:456:SER:HB2	2:A:1502:COA:H71	1.91	0.51
1:B:137:ARG:HD3	5:B:1902:HOH:O	2.11	0.51

Continued on next page...

Continued from previous page...

Atom-1	Atom-2	Interatomic distance (Å)	Clash overlap (Å)
1:A:115:VAL:HG12	1:A:116:ILE:HG13	1.91	0.51
1:A:294:ARG:HG3	1:A:294:ARG:HH11	1.76	0.51
1:B:455:ALA:HB2	1:B:468:ILE:HG13	1.93	0.51
1:A:133:GLN:O	1:A:137:ARG:HB2	2.11	0.51
1:B:420:ASP:HB3	1:B:582:GLU:OE2	2.11	0.51
1:A:122:VAL:HB	1:A:339:MET:HG2	1.94	0.50
1:A:27:SER:HA	1:A:174:TYR:CE1	2.47	0.50
1:B:578:TYR:HB3	1:B:587:PHE:CD1	2.47	0.50
1:A:625:LYS:HB2	1:A:625:LYS:NZ	2.27	0.50
1:A:556:VAL:HG22	2:A:1502:COA:H32	1.93	0.50
1:B:459:MET:HG2	5:B:1628:HOH:O	2.12	0.50
1:A:104:LYS:HA	1:A:108:LEU:HB2	1.93	0.49
1:B:568:PRO:HD2	1:B:592:TYR:CZ	2.47	0.49
1:B:463:GLY:HA2	5:B:1831:HOH:O	2.13	0.49
1:A:123:ILE:HD11	1:A:305:ALA:HA	1.93	0.49
1:B:183:PRO:HG3	1:B:259:TRP:NE1	2.28	0.49
1:B:50:TYR:CZ	1:B:54:LEU:HD11	2.48	0.49
1:B:548:HIS:HD2	5:B:1938:HOH:O	1.95	0.49
1:A:27:SER:HB2	5:A:2010:HOH:O	2.13	0.48
1:A:210:GLN:HE21	1:A:380:LYS:CE	2.26	0.48
1:A:177:LEU:HD23	1:A:327:LEU:HD12	1.95	0.48
1:B:163:LEU:CB	1:B:168:LEU:HD21	2.44	0.48
1:B:130:VAL:HA	5:B:1785:HOH:O	2.12	0.48
1:A:61:GLU:H	1:A:61:GLU:CD	2.17	0.48
1:B:115:VAL:HG12	1:B:116:ILE:HG13	1.95	0.48
1:B:421:PHE:CZ	1:B:615:ARG:HG3	2.49	0.48
1:A:332:ALA:HB3	1:A:336:SER:O	2.13	0.48
1:B:176:ILE:HA	1:B:326:THR:HG21	1.95	0.48
1:B:452:TYR:HB2	1:B:549:PHE:CD1	2.49	0.48
1:A:89:ARG:HD3	5:A:1666:HOH:O	2.12	0.47
1:B:202:HIS:HD2	5:B:1623:HOH:O	1.95	0.47
1:B:621:HIS:N	1:B:622:PRO:HD3	2.29	0.47
1:A:123:ILE:HD11	1:A:305:ALA:CA	2.43	0.47
1:A:44:GLN:HB2	5:A:1726:HOH:O	2.15	0.47
1:A:72:GLU:O	1:A:75:THR:HG22	2.14	0.47
1:A:202:HIS:HD2	5:A:1746:HOH:O	1.96	0.47
1:B:296:SER:HB2	1:B:298:ASP:OD1	2.15	0.47
1:B:255:HIS:CD2	1:B:257:ASN:H	2.32	0.47
1:A:210:GLN:HE21	1:A:380:LYS:NZ	2.13	0.47
1:A:452:TYR:HB2	1:A:549:PHE:CD1	2.50	0.46
1:A:555:GLN:HG3	1:A:578:TYR:CE2	2.50	0.46

Continued on next page...

Continued from previous page...

Atom-1	Atom-2	Interatomic distance (Å)	Clash overlap (Å)
1:A:198:ARG:HG3	1:A:198:ARG:HH11	1.81	0.46
1:B:44:GLN:HA	1:B:74:GLN:HE22	1.81	0.46
1:A:328:GLN:O	1:A:339:MET:HB2	2.15	0.46
1:B:322:TRP:H	1:B:328:GLN:HE22	1.63	0.46
1:B:88:GLU:O	1:B:92:LYS:HG2	2.16	0.46
1:A:431:ALA:HB3	1:A:500:VAL:HG13	1.98	0.46
1:A:193:PHE:CD1	1:A:281:LYS:HG2	2.51	0.46
1:A:420:ASP:OD1	1:A:421:PHE:N	2.48	0.46
1:A:222:THR:OG1	1:A:223:PRO:HD2	2.16	0.46
1:B:172:GLN:OE1	1:B:346:ALA:HB1	2.16	0.45
1:B:290:LYS:HE2	1:B:316:PHE:O	2.16	0.45
1:B:307:GLN:HG3	5:B:1819:HOH:O	2.16	0.45
1:B:309:LEU:HB2	1:B:565:PHE:HE1	1.79	0.45
1:B:341:TYR:OH	4:B:1602:ACO:HH32	2.16	0.45
1:A:276:VAL:O	1:A:280:GLN:HG3	2.17	0.45
1:A:352:VAL:HG13	1:A:564:MET:HE1	1.98	0.45
1:A:458:ARG:HD3	5:A:1750:HOH:O	2.16	0.45
1:A:204:THR:HG23	1:A:282:SER:HB3	1.98	0.45
1:A:184:GLY:HA3	1:A:187:GLN:O	2.16	0.45
1:A:529:GLU:HG2	5:A:1700:HOH:O	2.14	0.45
1:B:556:VAL:HG22	4:B:1602:ACO:H32	1.98	0.45
1:A:277:ASN:OD1	1:A:281:LYS:HE2	2.16	0.45
3:A:1501:152:H5A2	3:A:1501:152:H3	1.74	0.45
1:B:504:ARG:HD2	5:B:1698:HOH:O	2.16	0.45
1:A:54:LEU:O	1:A:58:VAL:HG22	2.16	0.45
1:B:79:VAL:HB	5:B:2202:HOH:O	2.17	0.45
1:B:270:LYS:HG3	1:B:271:VAL:N	2.31	0.45
1:A:352:VAL:HG13	1:A:564:MET:CE	2.47	0.44
1:B:553:THR:HG22	1:B:576:ILE:HB	1.99	0.44
1:A:548:HIS:HE1	1:A:572:ASP:OD1	2.01	0.44
1:A:192:ASN:HD22	1:A:193:PHE:N	2.15	0.44
1:B:79:VAL:HG11	1:B:535:PRO:HG3	2.00	0.44
1:A:476:LEU:HA	1:A:479:VAL:HG22	2.00	0.44
1:B:142:LEU:C	1:B:142:LEU:HD23	2.38	0.44
1:B:210:GLN:HG2	5:B:1961:HOH:O	2.16	0.44
1:B:476:LEU:HA	1:B:479:VAL:HG22	1.99	0.44
1:A:81:GLU:O	1:A:85:LYS:HG2	2.18	0.44
1:B:568:PRO:HG2	1:B:591:ALA:HA	1.99	0.43
1:A:354:LEU:O	1:A:358:VAL:HG23	2.17	0.43
1:B:129:PHE:CZ	1:B:335:GLY:HA2	2.53	0.43
1:B:192:ASN:HD22	1:B:192:ASN:C	2.22	0.43

Continued on next page...

Continued from previous page...

Atom-1	Atom-2	Interatomic distance (Å)	Clash overlap (Å)
1:B:486:THR:HG23	5:B:1874:HOH:O	2.18	0.43
1:A:390:LYS:HB3	1:A:390:LYS:HE2	1.85	0.43
1:A:568:PRO:HD2	1:A:592:TYR:CZ	2.53	0.43
1:B:204:THR:HG21	1:B:279:ILE:HA	1.99	0.43
1:A:304:VAL:O	1:A:308:MET:HG2	2.18	0.43
1:A:252:THR:HG22	1:A:259:TRP:CZ2	2.53	0.43
1:A:255:HIS:CD2	1:A:257:ASN:HD22	2.37	0.43
1:A:365:PRO:HD3	5:A:2111:HOH:O	2.19	0.43
1:B:290:LYS:HD3	5:B:2352:HOH:O	2.18	0.43
1:A:568:PRO:HG2	1:A:591:ALA:HA	2.01	0.43
1:A:373:VAL:HB	5:A:2099:HOH:O	2.18	0.43
3:B:1601:152:O3	3:B:1601:152:H5B3	2.19	0.43
1:A:109:GLN:NE2	5:A:1810:HOH:O	2.51	0.43
1:A:142:LEU:HD23	1:A:142:LEU:C	2.39	0.43
1:A:141:LYS:HD2	1:A:362:THR:HA	2.01	0.43
1:A:41:PRO:HG3	1:A:513:GLY:O	2.19	0.42
1:A:497:ARG:HB3	5:A:1717:HOH:O	2.18	0.42
1:B:225:THR:H	1:B:228:GLN:HE21	1.62	0.42
1:A:578:TYR:HD2	1:A:580:PRO:HG3	1.83	0.42
1:B:192:ASN:ND2	1:B:194:LEU:H	2.17	0.42
1:B:602:ARG:HD2	5:B:1905:HOH:O	2.19	0.42
1:A:79:VAL:HG21	5:A:2135:HOH:O	2.20	0.42
1:A:301:ARG:NH2	5:A:1787:HOH:O	2.51	0.42
1:A:467:THR:HB	1:A:517:ASP:HB2	2.02	0.42
1:B:72:GLU:HB2	5:B:1711:HOH:O	2.19	0.42
1:B:202:HIS:HE1	1:B:278:SER:O	2.02	0.42
1:A:301:ARG:HG3	1:A:301:ARG:HH11	1.85	0.42
1:A:50:TYR:O	1:A:54:LEU:HG	2.19	0.42
1:B:207:HIS:HD2	1:B:240:SER:OG	2.02	0.42
1:A:389:ILE:O	1:A:393:ILE:HG13	2.19	0.42
1:B:231:VAL:HG21	1:B:372:MET:SD	2.59	0.42
1:B:50:TYR:CE1	1:B:54:LEU:HD21	2.55	0.42
1:B:427:LEU:HD22	1:B:500:VAL:HG11	2.01	0.42
1:A:441:TYR:HD1	1:A:603:MET:HE1	1.85	0.42
1:B:276:VAL:O	1:B:280:GLN:HG3	2.19	0.42
1:B:349:PRO:HA	1:B:352:VAL:HG22	2.02	0.42
1:B:55:GLN:NE2	5:B:1895:HOH:O	2.50	0.41
1:A:123:ILE:HG13	1:A:565:PHE:CZ	2.55	0.41
1:A:255:HIS:HD2	1:A:257:ASN:HB2	1.86	0.41
1:A:563:VAL:HB	1:A:586:ASN:HB3	2.03	0.41
1:B:194:LEU:HD22	5:B:1662:HOH:O	2.20	0.41

Continued on next page...

Continued from previous page...

Atom-1	Atom-2	Interatomic distance (Å)	Clash overlap (Å)
1:A:43:LEU:O	1:A:47:LEU:HG	2.21	0.41
1:A:209:TYR:N	1:A:209:TYR:CD2	2.87	0.41
1:B:328:GLN:O	1:B:339:MET:HB2	2.21	0.41
1:A:578:TYR:HB3	1:A:587:PHE:CD1	2.56	0.41
1:B:158:LEU:HD12	1:B:158:LEU:HA	1.96	0.41
1:B:242:GLN:HB3	1:B:244:ASN:ND2	2.35	0.41
1:B:529:GLU:HG2	5:B:1693:HOH:O	2.19	0.41
1:A:540:ASP:OD2	1:A:541:THR:N	2.53	0.41
1:A:574:TYR:CE1	1:A:603:MET:HE2	2.56	0.41
1:B:148:ASP:OD2	1:B:357:HIS:HE1	2.03	0.41
1:B:325:LYS:HD2	1:B:325:LYS:HA	1.88	0.41
1:B:352:VAL:HG11	1:B:556:VAL:HG12	2.02	0.41
1:A:192:ASN:HD22	1:A:192:ASN:C	2.24	0.41
1:A:325:LYS:HA	1:A:325:LYS:HD2	1.95	0.41
1:A:342:GLU:OE1	1:A:344:ALA:HB3	2.21	0.41
1:A:50:TYR:CZ	1:A:54:LEU:HD11	2.55	0.40
1:A:114:VAL:HA	1:A:118:SER:HB3	2.02	0.40
1:B:95:GLU:OE1	1:B:461:HIS:HE1	2.03	0.40
1:A:32:GLN:NE2	1:A:170:MET:H	2.17	0.40
1:A:176:ILE:HA	1:A:326:THR:HG21	2.02	0.40
1:A:320:ASN:C	1:A:321:ARG:HG2	2.42	0.40
1:A:488:PRO:HD3	5:A:1760:HOH:O	2.21	0.40
1:B:507:THR:HG23	4:B:1602:ACO:H143	2.03	0.40
1:B:564:MET:HE2	1:B:564:MET:HB3	1.84	0.40
1:A:31:HIS:HB2	5:A:1777:HOH:O	2.21	0.40
1:A:581:MET:HB2	1:A:584:HIS:O	2.21	0.40
1:B:32:GLN:NE2	1:B:170:MET:H	2.09	0.40
1:B:182:VAL:HA	1:B:183:PRO:HD3	1.91	0.40
1:B:496:LEU:C	1:B:496:LEU:HD23	2.42	0.40
1:B:352:VAL:HA	1:B:355:VAL:HB	2.03	0.40

There are no symmetry-related clashes.

5.3 Torsion angles [i](#)

5.3.1 Protein backbone [i](#)

In the following table, the Percentiles column shows the percent Ramachandran outliers of the chain as a percentile score with respect to all X-ray entries followed by that with respect to entries of similar resolution.

The Analysed column shows the number of residues for which the backbone conformation was analysed, and the total number of residues.

Mol	Chain	Analysed	Favoured	Allowed	Outliers	Percentiles	
1	A	597/599 (100%)	576 (96%)	20 (3%)	1 (0%)	47	55
1	B	597/599 (100%)	573 (96%)	24 (4%)	0	100	100
All	All	1194/1198 (100%)	1149 (96%)	44 (4%)	1 (0%)	51	60

All (1) Ramachandran outliers are listed below:

Mol	Chain	Res	Type
1	A	624	ALA

5.3.2 Protein sidechains [i](#)

In the following table, the Percentiles column shows the percent sidechain outliers of the chain as a percentile score with respect to all X-ray entries followed by that with respect to entries of similar resolution.

The Analysed column shows the number of residues for which the sidechain conformation was analysed, and the total number of residues.

Mol	Chain	Analysed	Rotameric	Outliers	Percentiles	
1	A	527/527 (100%)	520 (99%)	7 (1%)	69	81
1	B	527/527 (100%)	519 (98%)	8 (2%)	65	78
All	All	1054/1054 (100%)	1039 (99%)	15 (1%)	67	80

All (15) residues with a non-rotameric sidechain are listed below:

Mol	Chain	Res	Type
1	A	137	ARG
1	A	192	ASN
1	A	343	HIS
1	A	372	MET
1	A	490	GLN
1	A	506	TYR
1	A	625	LYS
1	B	61	GLU
1	B	137	ARG
1	B	192	ASN
1	B	204	THR
1	B	308	MET

Continued on next page...

Continued from previous page...

Mol	Chain	Res	Type
1	B	333	GLU
1	B	506	TYR
1	B	597	GLU

Sometimes sidechains can be flipped to improve hydrogen bonding and reduce clashes. All (50) such sidechains are listed below:

Mol	Chain	Res	Type
1	A	32	GLN
1	A	65	HIS
1	A	74	GLN
1	A	84	GLN
1	A	109	GLN
1	A	112	GLN
1	A	135	GLN
1	A	166	GLN
1	A	187	GLN
1	A	192	ASN
1	A	202	HIS
1	A	207	HIS
1	A	210	GLN
1	A	307	GLN
1	A	310	HIS
1	A	328	GLN
1	A	405	GLN
1	A	461	HIS
1	A	501	GLN
1	A	548	HIS
1	A	550	ASN
1	A	586	ASN
1	A	619	GLN
1	A	620	ASN
1	B	32	GLN
1	B	74	GLN
1	B	84	GLN
1	B	112	GLN
1	B	135	GLN
1	B	155	ASN
1	B	192	ASN
1	B	202	HIS
1	B	207	HIS
1	B	210	GLN
1	B	228	GLN

Continued on next page...

Continued from previous page...

Mol	Chain	Res	Type
1	B	244	ASN
1	B	255	HIS
1	B	265	ASN
1	B	307	GLN
1	B	310	HIS
1	B	328	GLN
1	B	357	HIS
1	B	399	ASN
1	B	405	GLN
1	B	461	HIS
1	B	501	GLN
1	B	548	HIS
1	B	550	ASN
1	B	586	ASN
1	B	620	ASN

5.3.3 RNA [i](#)

There are no RNA molecules in this entry.

5.4 Non-standard residues in protein, DNA, RNA chains [i](#)

There are no non-standard protein/DNA/RNA residues in this entry.

5.5 Carbohydrates [i](#)

There are no monosaccharides in this entry.

5.6 Ligand geometry [i](#)

4 ligands are modelled in this entry.

In the following table, the Counts columns list the number of bonds (or angles) for which Mogul statistics could be retrieved, the number of bonds (or angles) that are observed in the model and the number of bonds (or angles) that are defined in the Chemical Component Dictionary. The Link column lists molecule types, if any, to which the group is linked. The Z score for a bond length (or angle) is the number of standard deviations the observed value is removed from the expected value. A bond length (or angle) with $|Z| > 2$ is considered an outlier worth inspection. RMSZ is the root-mean-square of all Z scores of the bond lengths (or angles).

Mol	Type	Chain	Res	Link	Bond lengths			Bond angles		
					Counts	RMSZ	# Z > 2	Counts	RMSZ	# Z > 2
2	COA	A	1502	-	41,50,50	1.17	2 (4%)	52,75,75	1.19	3 (5%)
4	ACO	B	1602	-	45,53,53	1.21	2 (4%)	56,79,79	1.45	5 (8%)
3	152	B	1601	-	10,10,10	1.11	0	14,14,14	1.14	1 (7%)
3	152	A	1501	-	10,10,10	1.16	1 (10%)	14,14,14	1.03	1 (7%)

In the following table, the Chirals column lists the number of chiral outliers, the number of chiral centers analysed, the number of these observed in the model and the number defined in the Chemical Component Dictionary. Similar counts are reported in the Torsion and Rings columns. '-' means no outliers of that kind were identified.

Mol	Type	Chain	Res	Link	Chirals	Torsions	Rings
2	COA	A	1502	-	-	4/44/64/64	0/3/3/3
4	ACO	B	1602	-	-	7/47/67/67	0/3/3/3
3	152	B	1601	-	-	0/9/9/9	-
3	152	A	1501	-	-	1/9/9/9	-

All (5) bond length outliers are listed below:

Mol	Chain	Res	Type	Atoms	Z	Observed(Å)	Ideal(Å)
4	B	1602	ACO	O4B-C1B	4.57	1.47	1.41
2	A	1502	COA	O4B-C1B	4.30	1.47	1.41
4	B	1602	ACO	P3B-O7A	3.37	1.61	1.50
2	A	1502	COA	P3B-O7A	3.22	1.60	1.50
3	A	1501	152	C4-N5	-2.21	1.47	1.52

All (10) bond angle outliers are listed below:

Mol	Chain	Res	Type	Atoms	Z	Observed(°)	Ideal(°)
4	B	1602	ACO	N3A-C2A-N1A	-5.30	120.39	128.68
2	A	1502	COA	N3A-C2A-N1A	-5.11	120.69	128.68
4	B	1602	ACO	O-C-CH3	-4.77	103.48	123.07
4	B	1602	ACO	O-C-S1P	4.35	141.93	122.60
3	B	1601	152	C3-C4-N5	-3.26	111.25	116.83
3	A	1501	152	C3-C4-N5	-3.17	111.41	116.83
4	B	1602	ACO	P2A-O3A-P1A	-3.13	122.08	132.83
4	B	1602	ACO	O9A-P3B-O8A	3.04	119.26	107.64
2	A	1502	COA	P2A-O3A-P1A	-3.03	122.43	132.83
2	A	1502	COA	O9A-P3B-O8A	2.93	118.83	107.64

There are no chirality outliers.

All (12) torsion outliers are listed below:

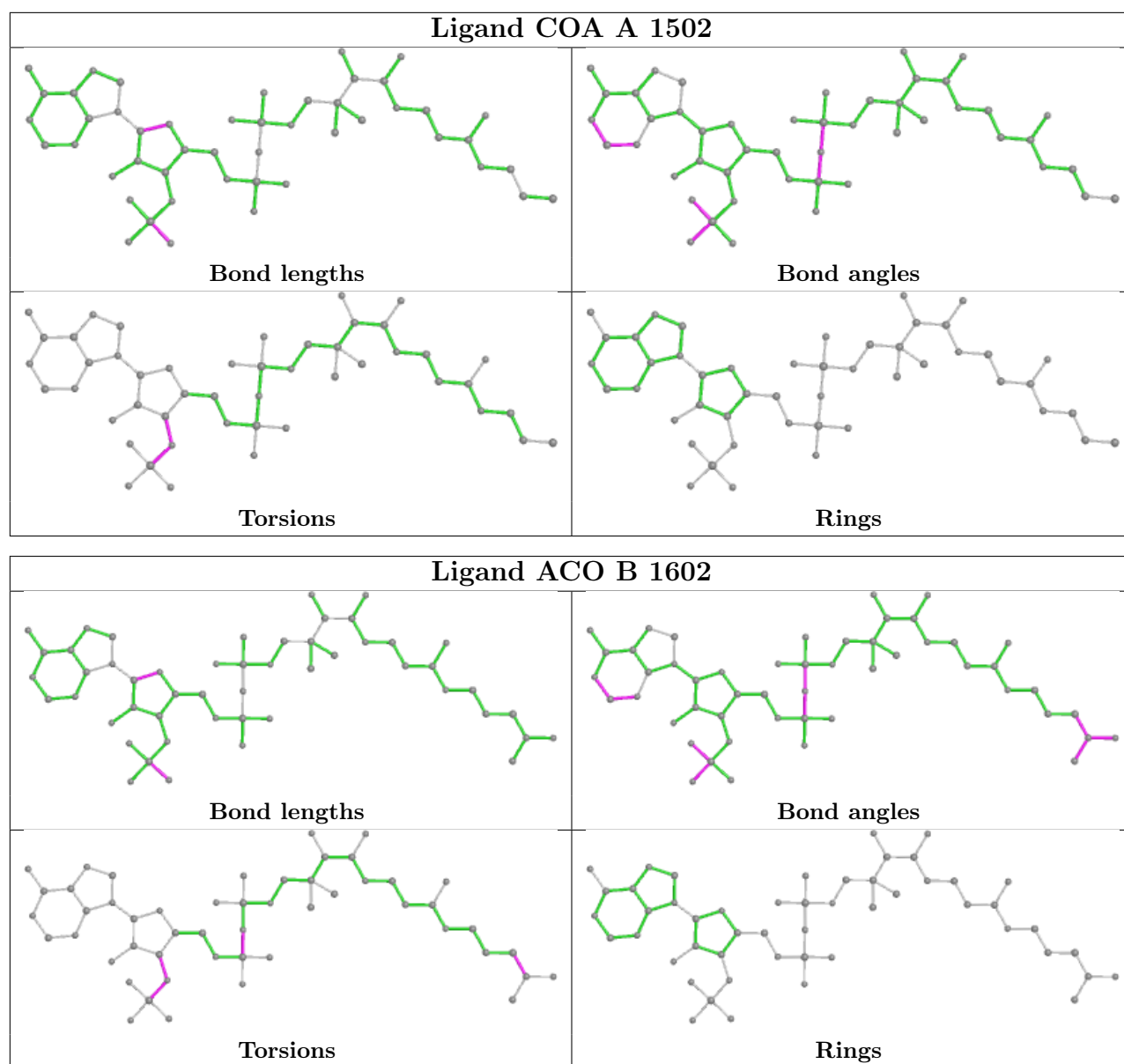
Mol	Chain	Res	Type	Atoms
3	A	1501	152	C1-C2-C3-C4
4	B	1602	ACO	O-C-S1P-C2P
4	B	1602	ACO	CH3-C-S1P-C2P
4	B	1602	ACO	P2A-O3A-P1A-O5B
2	A	1502	COA	C3B-O3B-P3B-O7A
4	B	1602	ACO	C3B-O3B-P3B-O7A
2	A	1502	COA	C2B-C3B-O3B-P3B
2	A	1502	COA	C3B-O3B-P3B-O9A
2	A	1502	COA	C4B-C3B-O3B-P3B
4	B	1602	ACO	C2B-C3B-O3B-P3B
4	B	1602	ACO	C4B-C3B-O3B-P3B
4	B	1602	ACO	C3B-O3B-P3B-O9A

There are no ring outliers.

4 monomers are involved in 9 short contacts:

Mol	Chain	Res	Type	Clashes	Symm-Clashes
2	A	1502	COA	3	0
4	B	1602	ACO	4	0
3	B	1601	152	1	0
3	A	1501	152	1	0

The following is a two-dimensional graphical depiction of Mogul quality analysis of bond lengths, bond angles, torsion angles, and ring geometry for all instances of the Ligand of Interest. In addition, ligands with molecular weight > 250 and outliers as shown on the validation Tables will also be included. For torsion angles, if less than 5% of the Mogul distribution of torsion angles is within 10 degrees of the torsion angle in question, then that torsion angle is considered an outlier. Any bond that is central to one or more torsion angles identified as an outlier by Mogul will be highlighted in the graph. For rings, the root-mean-square deviation (RMSD) between the ring in question and similar rings identified by Mogul is calculated over all ring torsion angles. If the average RMSD is greater than 60 degrees and the minimal RMSD between the ring in question and any Mogul-identified rings is also greater than 60 degrees, then that ring is considered an outlier. The outliers are highlighted in purple. The color gray indicates Mogul did not find sufficient equivalents in the CSD to analyse the geometry.



5.7 Other polymers [i](#)

There are no such residues in this entry.

5.8 Polymer linkage issues [i](#)

There are no chain breaks in this entry.

6 Fit of model and data [i](#)

6.1 Protein, DNA and RNA chains [i](#)

In the following table, the column labelled ‘#RSRZ > 2’ contains the number (and percentage) of RSRZ outliers, followed by percent RSRZ outliers for the chain as percentile scores relative to all X-ray entries and entries of similar resolution. The OWAB column contains the minimum, median, 95th percentile and maximum values of the occupancy-weighted average B-factor per residue. The column labelled ‘Q < 0.9’ lists the number of (and percentage) of residues with an average occupancy less than 0.9.

Mol	Chain	Analysed	<RSRZ>	#RSRZ>2	OWAB(Å ²)	Q<0.9
1	A	599/599 (100%)	-0.11	28 (4%) 31 30	12, 24, 51, 83	0
1	B	599/599 (100%)	-0.36	17 (2%) 53 51	9, 18, 37, 79	0
All	All	1198/1198 (100%)	-0.23	45 (3%) 40 38	9, 21, 46, 83	0

All (45) RSRZ outliers are listed below:

Mol	Chain	Res	Type	RSRZ
1	B	367	LEU	10.5
1	A	368	VAL	8.5
1	B	370	SER	7.9
1	B	368	VAL	7.8
1	A	367	LEU	6.7
1	B	369	ARG	6.6
1	B	371	PRO	5.8
1	B	625	LYS	5.7
1	A	625	LYS	5.5
1	A	624	ALA	5.4
1	A	374	PRO	4.9
1	A	371	PRO	4.7
1	B	624	ALA	4.7
1	A	373	VAL	4.4
1	B	366	GLU	4.0
1	B	294	ARG	4.0
1	A	197	LYS	4.0
1	A	370	SER	3.9
1	A	369	ARG	3.7
1	A	219	SER	3.7
1	A	366	GLU	3.6
1	A	623	ARG	3.4
1	B	29	MET	3.2
1	A	27	SER	3.1

Continued on next page...

Continued from previous page...

Mol	Chain	Res	Type	RSRZ
1	A	198	ARG	3.1
1	B	244	ASN	3.1
1	A	220	ASP	3.0
1	A	372	MET	2.9
1	A	242	GLN	2.8
1	A	29	MET	2.8
1	B	298	ASP	2.6
1	B	622	PRO	2.6
1	A	294	ARG	2.5
1	A	60	GLU	2.5
1	A	293	PRO	2.5
1	B	365	PRO	2.5
1	B	372	MET	2.5
1	B	623	ARG	2.4
1	A	297	ASP	2.4
1	A	298	ASP	2.3
1	A	365	PRO	2.3
1	B	198	ARG	2.2
1	A	163	LEU	2.2
1	A	490	GLN	2.1
1	A	61	GLU	2.0

6.2 Non-standard residues in protein, DNA, RNA chains [i](#)

There are no non-standard protein/DNA/RNA residues in this entry.

6.3 Carbohydrates [i](#)

There are no monosaccharides in this entry.

6.4 Ligands [i](#)

In the following table, the Atoms column lists the number of modelled atoms in the group and the number defined in the chemical component dictionary. The B-factors column lists the minimum, median, 95th percentile and maximum values of B factors of atoms in the group. The column labelled 'Q < 0.9' lists the number of atoms with occupancy less than 0.9.

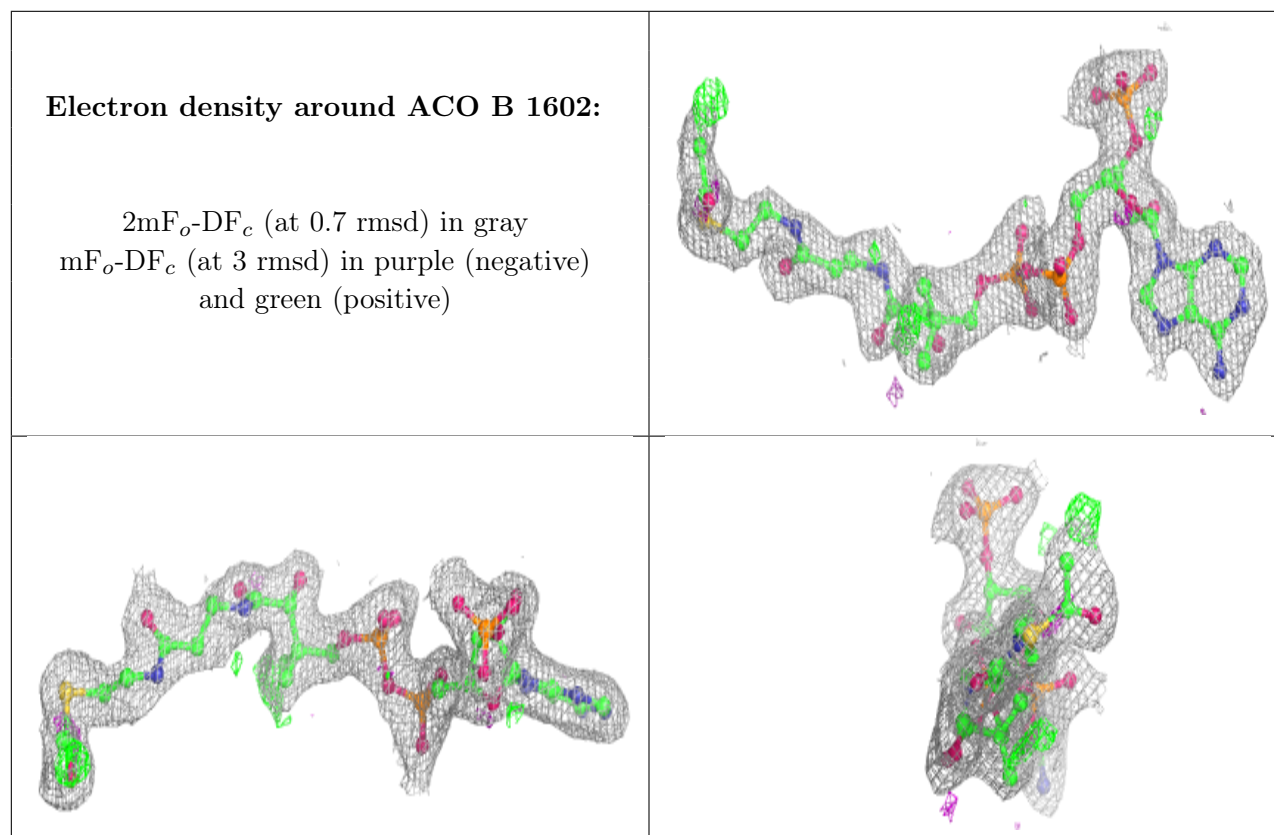
Mol	Type	Chain	Res	Atoms	RSCC	RSR	B-factors(\AA^2)	Q < 0.9
4	ACO	B	1602	51/51	0.93	0.12	17,23,28,31	0
2	COA	A	1502	48/48	0.94	0.11	16,23,31,34	0

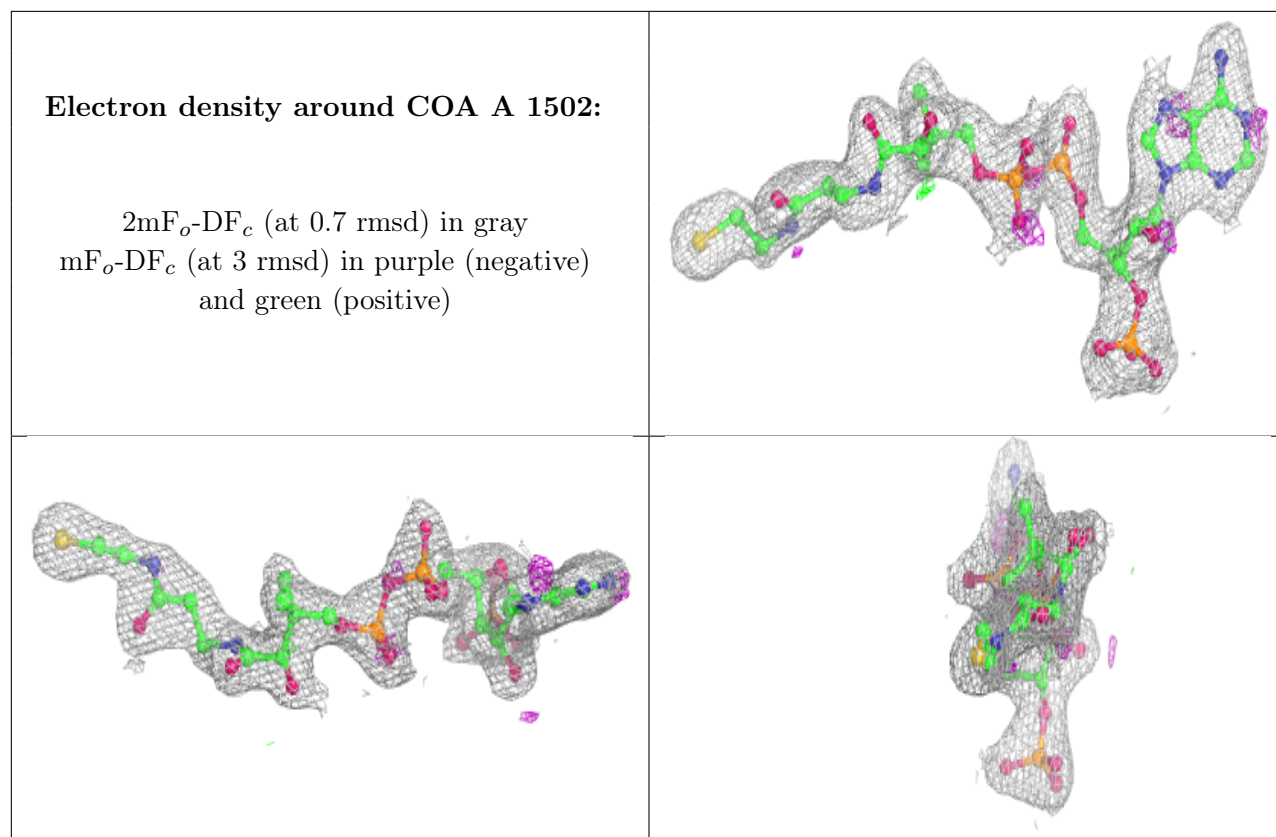
Continued on next page...

Continued from previous page...

Mol	Type	Chain	Res	Atoms	RSCC	RSR	B-factors(\AA^2)	Q<0.9
3	152	A	1501	11/11	0.96	0.13	16,17,18,19	0
3	152	B	1601	11/11	0.97	0.11	8,13,14,15	0

The following is a graphical depiction of the model fit to experimental electron density of all instances of the Ligand of Interest. In addition, ligands with molecular weight > 250 and outliers as shown on the geometry validation Tables will also be included. Each fit is shown from different orientation to approximate a three-dimensional view.





6.5 Other polymers [i](#)

There are no such residues in this entry.