



Full wwPDB X-ray Structure Validation Report ⓘ

May 15, 2020 – 04:19 pm BST

PDB ID : 5GRK
Title : Crystal structure of Uracil DNA glycosylase -Xanthine complex from *Bradyrhizobium diazoefficiens*
Authors : Patil, V.V.; Ullas, V.C.; Ahn, W.; Varshney, U.; Woo, E.
Deposited on : 2016-08-11
Resolution : 2.80 Å(reported)

This is a Full wwPDB X-ray Structure Validation Report for a publicly released PDB entry.

We welcome your comments at validation@mail.wwpdb.org

A user guide is available at

<https://www.wwpdb.org/validation/2017/XrayValidationReportHelp>

with specific help available everywhere you see the ⓘ symbol.

The following versions of software and data (see [references ⓘ](#)) were used in the production of this report:

MolProbity : 4.02b-467
Mogul : 1.8.5 (274361), CSD as541be (2020)
Xtriage (Phenix) : 1.13
EDS : 2.11
Percentile statistics : 20191225.v01 (using entries in the PDB archive December 25th 2019)
Refmac : 5.8.0158
CCP4 : 7.0.044 (Gargrove)
Ideal geometry (proteins) : Engh & Huber (2001)
Ideal geometry (DNA, RNA) : Parkinson et al. (1996)
Validation Pipeline (wwPDB-VP) : 2.11

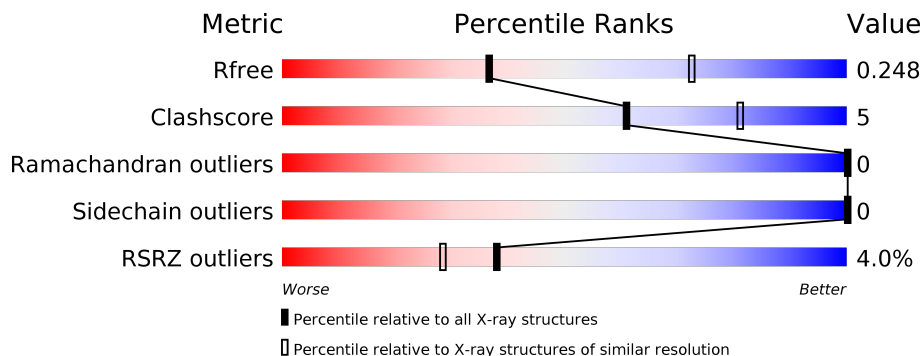
1 Overall quality at a glance i

The following experimental techniques were used to determine the structure:

X-RAY DIFFRACTION

The reported resolution of this entry is 2.80 Å.

Percentile scores (ranging between 0-100) for global validation metrics of the entry are shown in the following graphic. The table shows the number of entries on which the scores are based.



Metric	Whole archive (#Entries)	Similar resolution (#Entries, resolution range(Å))
R_{free}	130704	3140 (2.80-2.80)
Clashscore	141614	3569 (2.80-2.80)
Ramachandran outliers	138981	3498 (2.80-2.80)
Sidechain outliers	138945	3500 (2.80-2.80)
RSRZ outliers	127900	3078 (2.80-2.80)

The table below summarises the geometric issues observed across the polymeric chains and their fit to the electron density. The red, orange, yellow and green segments on the lower bar indicate the fraction of residues that contain outliers for ≥ 3 , 2, 1 and 0 types of geometric quality criteria respectively. A grey segment represents the fraction of residues that are not modelled. The numeric value for each fraction is indicated below the corresponding segment, with a dot representing fractions $\leq 5\%$. The upper red bar (where present) indicates the fraction of residues that have poor fit to the electron density. The numeric value is given above the bar.

Mol	Chain	Length	Quality of chain
1	A	272	<div style="display: flex; align-items: center;"> <div style="width: 2%; height: 10px; background-color: red; margin-right: 2px;"></div> <div style="width: 97%; height: 10px; background-color: green; margin-right: 2px;"></div> <div style="width: 1%; height: 10px; background-color: yellow; margin-right: 2px;"></div> <div style="width: 0.1%; height: 10px; background-color: grey; margin-right: 2px;"></div> </div> <p style="margin-left: 20px;">97%</p>
1	B	272	<div style="display: flex; align-items: center;"> <div style="width: 2%; height: 10px; background-color: red; margin-right: 2px;"></div> <div style="width: 94%; height: 10px; background-color: green; margin-right: 2px;"></div> <div style="width: 6%; height: 10px; background-color: yellow; margin-right: 2px;"></div> <div style="width: 0.1%; height: 10px; background-color: grey; margin-right: 2px;"></div> </div> <p style="margin-left: 20px;">94% 6%</p>
1	C	272	<div style="display: flex; align-items: center;"> <div style="width: 10%; height: 10px; background-color: red; margin-right: 2px;"></div> <div style="width: 91%; height: 10px; background-color: green; margin-right: 2px;"></div> <div style="width: 9%; height: 10px; background-color: yellow; margin-right: 2px;"></div> <div style="width: 0.1%; height: 10px; background-color: grey; margin-right: 2px;"></div> </div> <p style="margin-left: 20px;">10% 91% 9%</p>
1	D	272	<div style="display: flex; align-items: center;"> <div style="width: 3%; height: 10px; background-color: red; margin-right: 2px;"></div> <div style="width: 96%; height: 10px; background-color: green; margin-right: 2px;"></div> <div style="width: 1%; height: 10px; background-color: yellow; margin-right: 2px;"></div> <div style="width: 0.1%; height: 10px; background-color: grey; margin-right: 2px;"></div> </div> <p style="margin-left: 20px;">3% 96%</p>

2 Entry composition [i](#)

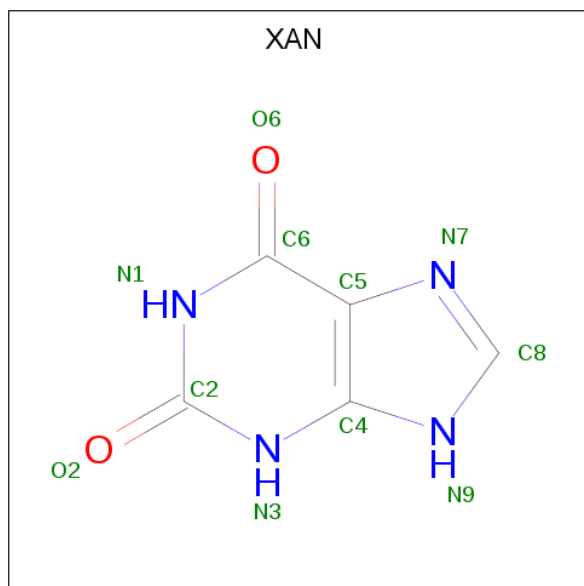
There are 2 unique types of molecules in this entry. The entry contains 16682 atoms, of which 8242 are hydrogens and 0 are deuteriums.

In the tables below, the ZeroOcc column contains the number of atoms modelled with zero occupancy, the AltConf column contains the number of residues with at least one atom in alternate conformation and the Trace column contains the number of residues modelled with at most 2 atoms.

- Molecule 1 is a protein called Blr0248 protein.

Mol	Chain	Residues	Atoms					ZeroOcc	AltConf	Trace	
			Total	C	H	N	O				S
1	A	272	Total 4158	C 1344	H 2059	N 368	O 381	S 6	0	0	0
1	B	272	Total 4143	C 1344	H 2044	N 368	O 381	S 6	0	0	0
1	C	272	Total 4152	C 1344	H 2053	N 368	O 381	S 6	0	0	0
1	D	272	Total 4169	C 1344	H 2070	N 368	O 381	S 6	0	0	0

- Molecule 2 is XANTHINE (three-letter code: XAN) (formula: C₅H₄N₄O₂).



Mol	Chain	Residues	Atoms					ZeroOcc	AltConf
			Total	C	H	N	O		
2	A	1	Total 15	C 5	H 4	N 4	O 2	0	0
2	B	1	Total 15	C 5	H 4	N 4	O 2	0	0

Continued on next page...

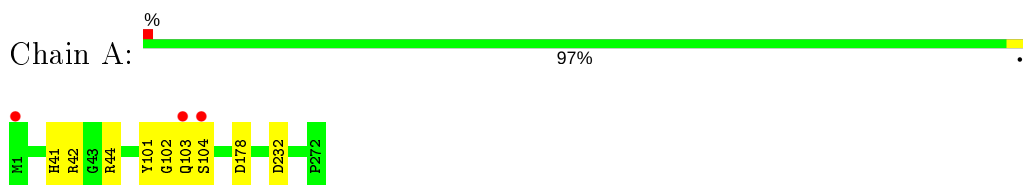
Continued from previous page...

Mol	Chain	Residues	Atoms					ZeroOcc	AltConf
2	C	1	Total	C	H	N	O	0	0
			15	5	4	4	2		
2	D	1	Total	C	H	N	O	0	0
			15	5	4	4	2		

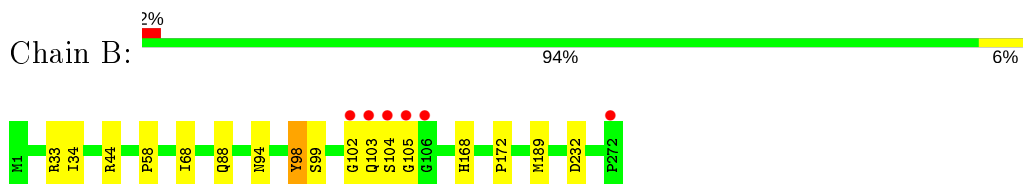
3 Residue-property plots [i](#)

These plots are drawn for all protein, RNA and DNA chains in the entry. The first graphic for a chain summarises the proportions of the various outlier classes displayed in the second graphic. The second graphic shows the sequence view annotated by issues in geometry and electron density. Residues are color-coded according to the number of geometric quality criteria for which they contain at least one outlier: green = 0, yellow = 1, orange = 2 and red = 3 or more. A red dot above a residue indicates a poor fit to the electron density ($RSRZ > 2$). Stretches of 2 or more consecutive residues without any outlier are shown as a green connector. Residues present in the sample, but not in the model, are shown in grey.

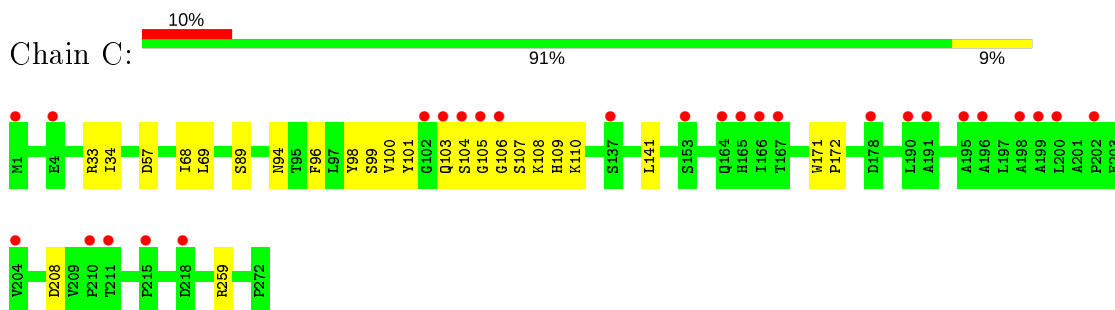
- Molecule 1: Blr0248 protein



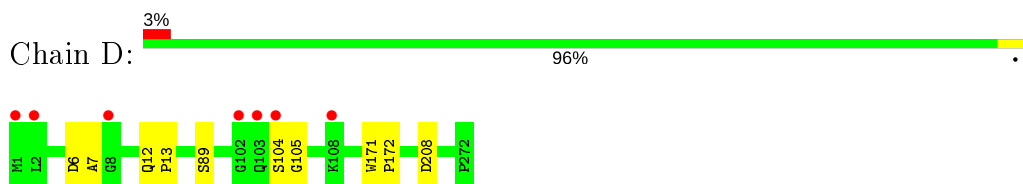
- Molecule 1: Blr0248 protein



- Molecule 1: Blr0248 protein



- Molecule 1: Blr0248 protein



4 Data and refinement statistics

Property	Value	Source
Space group	P 21 21 21	Depositor
Cell constants a, b, c, α , β , γ	70.02Å 89.89Å 255.34Å 90.00° 90.00° 90.00°	Depositor
Resolution (Å)	47.17 – 2.80 47.17 – 2.80	Depositor EDS
% Data completeness (in resolution range)	99.7 (47.17-2.80) 99.7 (47.17-2.80)	Depositor EDS
R_{merge}	(Not available)	Depositor
R_{sym}	(Not available)	Depositor
$\langle I/\sigma(I) \rangle$ ¹	4.25 (at 2.81Å)	Xtrriage
Refinement program	PHENIX 1.9_1692	Depositor
R, R_{free}	0.220 , 0.244 0.230 , 0.248	Depositor DCC
R_{free} test set	1996 reflections (4.95%)	wwPDB-VP
Wilson B-factor (Å ²)	37.6	Xtrriage
Anisotropy	1.020	Xtrriage
Bulk solvent k_{sol} (e/Å ³), B_{sol} (Å ²)	0.38 , 34.2	EDS
L-test for twinning ²	$\langle L \rangle = 0.47$, $\langle L^2 \rangle = 0.30$	Xtrriage
Estimated twinning fraction	No twinning to report.	Xtrriage
F_o, F_c correlation	0.91	EDS
Total number of atoms	16682	wwPDB-VP
Average B, all atoms (Å ²)	44.0	wwPDB-VP

Xtrriage's analysis on translational NCS is as follows: *The largest off-origin peak in the Patterson function is 4.11% of the height of the origin peak. No significant pseudotranslation is detected.*

¹Intensities estimated from amplitudes.

²Theoretical values of $\langle |L| \rangle$, $\langle L^2 \rangle$ for acentric reflections are 0.5, 0.333 respectively for untwinned datasets, and 0.375, 0.2 for perfectly twinned datasets.

5 Model quality [i](#)

5.1 Standard geometry [i](#)

Bond lengths and bond angles in the following residue types are not validated in this section: XAN

The Z score for a bond length (or angle) is the number of standard deviations the observed value is removed from the expected value. A bond length (or angle) with $|Z| > 5$ is considered an outlier worth inspection. RMSZ is the root-mean-square of all Z scores of the bond lengths (or angles).

Mol	Chain	Bond lengths		Bond angles	
		RMSZ	# $ Z > 5$	RMSZ	# $ Z > 5$
1	A	0.40	1/2159 (0.0%)	0.44	0/2944
1	B	0.44	1/2159 (0.0%)	0.43	0/2944
1	C	0.32	0/2159	0.44	0/2944
1	D	0.32	0/2159	0.43	0/2944
All	All	0.37	2/8636 (0.0%)	0.43	0/11776

All (2) bond length outliers are listed below:

Mol	Chain	Res	Type	Atoms	Z	Observed(Å)	Ideal(Å)
1	A	101	TYR	CE1-CZ	-6.01	1.30	1.38
1	B	98	TYR	CE1-CZ	-5.28	1.31	1.38

There are no bond angle outliers.

There are no chirality outliers.

There are no planarity outliers.

5.2 Too-close contacts [i](#)

In the following table, the Non-H and H(model) columns list the number of non-hydrogen atoms and hydrogen atoms in the chain respectively. The H(added) column lists the number of hydrogen atoms added and optimized by MolProbity. The Clashes column lists the number of clashes within the asymmetric unit, whereas Symm-Clashes lists symmetry related clashes.

Mol	Chain	Non-H	H(model)	H(added)	Clashes	Symm-Clashes
1	A	2099	2059	2072	8	0
1	B	2099	2044	2072	30	0
1	C	2099	2053	2072	32	0
1	D	2099	2070	2072	6	0
2	A	11	4	4	0	0

Continued on next page...

Continued from previous page...

Mol	Chain	Non-H	H(model)	H(added)	Clashes	Symm-Clashes
2	B	11	4	4	1	0
2	C	11	4	4	2	0
2	D	11	4	4	0	0
All	All	8440	8242	8304	76	0

The all-atom clashscore is defined as the number of clashes found per 1000 atoms (including hydrogen atoms). The all-atom clashscore for this structure is 5.

All (76) close contacts within the same asymmetric unit are listed below, sorted by their clash magnitude.

Atom-1	Atom-2	Interatomic distance (Å)	Clash overlap (Å)
1:B:102:GLY:HA3	1:B:103:GLN:CG	1.42	1.40
1:B:102:GLY:CA	1:B:103:GLN:HG2	1.30	1.29
1:B:102:GLY:HA3	1:B:103:GLN:CD	1.56	1.24
1:B:102:GLY:CA	1:B:103:GLN:CG	2.04	1.14
1:B:102:GLY:HA3	1:B:103:GLN:OE1	1.56	1.05
1:B:103:GLN:HA	1:B:104:SER:HB2	1.40	1.03
1:B:103:GLN:NE2	1:B:104:SER:O	1.93	1.01
1:A:44:ARG:NH2	1:A:232:ASP:OD1	2.02	0.93
1:B:102:GLY:CA	1:B:103:GLN:OE1	2.16	0.93
1:C:33:ARG:NH1	1:C:259:ARG:HG3	1.84	0.91
1:C:107:SER:HB2	1:C:110:LYS:HB3	1.54	0.88
1:C:33:ARG:HH12	1:C:259:ARG:HG3	1.39	0.86
1:C:104:SER:N	1:C:105:GLY:HA3	1.92	0.85
1:A:102:GLY:HA2	1:A:103:GLN:HB2	1.58	0.84
1:B:103:GLN:HA	1:B:104:SER:CB	2.06	0.81
1:A:102:GLY:CA	1:A:103:GLN:HB2	2.15	0.76
1:C:107:SER:OG	1:C:141:LEU:CD2	2.35	0.74
1:B:58:PRO:O	1:B:99:SER:OG	2.04	0.74
1:B:44:ARG:NH1	1:B:88:GLN:O	2.21	0.74
1:B:44:ARG:NH2	1:B:232:ASP:OD1	2.21	0.73
1:C:33:ARG:NH2	1:C:101:TYR:CD1	2.63	0.67
1:B:103:GLN:HB3	1:B:104:SER:C	2.17	0.65
1:C:69:LEU:N	2:C:301:XAN:O2	2.31	0.62
1:C:33:ARG:HD2	1:C:99:SER:OG	2.00	0.62
1:C:68:ILE:HD12	1:C:94:ASN:OD1	2.01	0.61
1:C:103:GLN:C	1:C:105:GLY:HA3	2.21	0.61
1:C:33:ARG:NH2	1:C:101:TYR:CE1	2.70	0.60
1:C:33:ARG:CZ	1:C:101:TYR:HD1	2.14	0.59
1:D:12:GLN:HB3	1:D:13:PRO:HA	1.85	0.57
1:C:57:ASP:OD2	1:C:100:VAL:HG23	2.05	0.57

Continued on next page...

Continued from previous page...

Atom-1	Atom-2	Interatomic distance (Å)	Clash overlap (Å)
1:B:103:GLN:CD	1:B:104:SER:O	2.42	0.57
1:C:33:ARG:NH2	1:C:101:TYR:HD1	2.03	0.56
1:B:102:GLY:HA2	1:B:103:GLN:OE1	2.02	0.56
1:D:104:SER:H	1:D:105:GLY:HA3	1.71	0.55
1:C:33:ARG:CZ	1:C:101:TYR:CD1	2.91	0.53
1:B:102:GLY:C	1:B:103:GLN:HG2	2.21	0.53
1:C:106:GLY:N	1:C:107:SER:HA	2.24	0.52
1:C:89:SER:OG	1:C:208:ASP:OD1	2.23	0.52
1:C:107:SER:OG	1:C:141:LEU:HD21	2.08	0.52
1:B:68:ILE:HD12	1:B:94:ASN:OD1	2.10	0.52
1:B:104:SER:N	1:B:105:GLY:O	2.44	0.51
1:B:33:ARG:HG3	1:B:99:SER:O	2.11	0.51
1:B:168:HIS:CE1	2:B:301:XAN:N7	2.79	0.51
1:C:107:SER:OG	1:C:141:LEU:HD23	2.11	0.50
1:C:107:SER:N	1:C:141:LEU:HD21	2.26	0.50
1:D:89:SER:OG	1:D:208:ASP:OD1	2.22	0.50
1:B:103:GLN:CA	1:B:104:SER:CB	2.85	0.49
1:C:68:ILE:HB	1:C:94:ASN:HD21	1.78	0.48
1:B:34:ILE:HA	1:B:98:TYR:CD1	2.48	0.48
1:C:57:ASP:CG	1:C:100:VAL:HG23	2.34	0.48
1:C:96:PHE:CZ	1:C:107:SER:OG	2.66	0.47
1:B:102:GLY:CA	1:B:103:GLN:CD	2.40	0.47
1:B:44:ARG:NH1	1:B:44:ARG:HG2	2.29	0.47
1:C:69:LEU:HG	2:C:301:XAN:O2	2.14	0.47
1:C:96:PHE:HZ	1:C:107:SER:OG	1.98	0.46
1:C:107:SER:H	1:C:141:LEU:HD21	1.81	0.46
1:C:108:LYS:HD2	1:C:109:HIS:NE2	2.32	0.45
1:A:102:GLY:HA3	1:A:104:SER:N	2.32	0.45
1:D:6:ASP:OD1	1:D:7:ALA:N	2.50	0.44
1:D:12:GLN:CB	1:D:13:PRO:HA	2.45	0.44
1:B:44:ARG:CG	1:B:44:ARG:HH11	2.31	0.44
1:B:104:SER:N	1:B:105:GLY:CA	2.82	0.43
1:B:68:ILE:HB	1:B:94:ASN:HD21	1.82	0.43
1:C:104:SER:HA	1:C:108:LYS:H	1.83	0.43
1:A:103:GLN:O	1:A:104:SER:C	2.56	0.42
1:B:104:SER:N	1:B:105:GLY:C	2.73	0.42
1:C:171:TRP:N	1:C:172:PRO:CD	2.81	0.42
1:C:105:GLY:N	1:C:107:SER:HA	2.34	0.42
1:D:171:TRP:N	1:D:172:PRO:CD	2.82	0.42
1:B:58:PRO:O	1:B:99:SER:CB	2.68	0.41
1:C:103:GLN:O	1:C:103:GLN:HG2	2.21	0.41

Continued on next page...

Continued from previous page...

Atom-1	Atom-2	Interatomic distance (Å)	Clash overlap (Å)
1:A:41:HIS:CG	1:A:42:ARG:N	2.88	0.41
1:A:104:SER:OG	1:A:104:SER:O	2.28	0.41
1:A:178:ASP:N	1:A:178:ASP:OD1	2.54	0.40
1:C:34:ILE:HA	1:C:98:TYR:CD2	2.57	0.40
1:B:172:PRO:HD3	1:B:189:MET:HE1	2.04	0.40

There are no symmetry-related clashes.

5.3 Torsion angles [i](#)

5.3.1 Protein backbone [i](#)

In the following table, the Percentiles column shows the percent Ramachandran outliers of the chain as a percentile score with respect to all X-ray entries followed by that with respect to entries of similar resolution.

The Analysed column shows the number of residues for which the backbone conformation was analysed, and the total number of residues.

Mol	Chain	Analysed	Favoured	Allowed	Outliers	Percentiles	
1	A	270/272 (99%)	263 (97%)	7 (3%)	0	100	100
1	B	270/272 (99%)	260 (96%)	10 (4%)	0	100	100
1	C	270/272 (99%)	260 (96%)	10 (4%)	0	100	100
1	D	270/272 (99%)	261 (97%)	9 (3%)	0	100	100
All	All	1080/1088 (99%)	1044 (97%)	36 (3%)	0	100	100

There are no Ramachandran outliers to report.

5.3.2 Protein sidechains [i](#)

In the following table, the Percentiles column shows the percent sidechain outliers of the chain as a percentile score with respect to all X-ray entries followed by that with respect to entries of similar resolution.

The Analysed column shows the number of residues for which the sidechain conformation was analysed, and the total number of residues.

Mol	Chain	Analysed	Rotameric	Outliers	Percentiles	
1	A	213/213 (100%)	213 (100%)	0	100	100

Continued on next page...

Continued from previous page...

Mol	Chain	Analysed	Rotameric	Outliers	Percentiles	
1	B	213/213 (100%)	213 (100%)	0	100	100
1	C	213/213 (100%)	213 (100%)	0	100	100
1	D	213/213 (100%)	213 (100%)	0	100	100
All	All	852/852 (100%)	852 (100%)	0	100	100

There are no protein residues with a non-rotameric sidechain to report.

Some sidechains can be flipped to improve hydrogen bonding and reduce clashes. There are no such sidechains identified.

5.3.3 RNA [i](#)

There are no RNA molecules in this entry.

5.4 Non-standard residues in protein, DNA, RNA chains [i](#)

There are no non-standard protein/DNA/RNA residues in this entry.

5.5 Carbohydrates [i](#)

There are no carbohydrates in this entry.

5.6 Ligand geometry [i](#)

4 ligands are modelled in this entry.

In the following table, the Counts columns list the number of bonds (or angles) for which Mogul statistics could be retrieved, the number of bonds (or angles) that are observed in the model and the number of bonds (or angles) that are defined in the Chemical Component Dictionary. The Link column lists molecule types, if any, to which the group is linked. The Z score for a bond length (or angle) is the number of standard deviations the observed value is removed from the expected value. A bond length (or angle) with $|Z| > 2$ is considered an outlier worth inspection. RMSZ is the root-mean-square of all Z scores of the bond lengths (or angles).

Mol	Type	Chain	Res	Link	Bond lengths			Bond angles		
					Counts	RMSZ	# Z > 2	Counts	RMSZ	# Z > 2
2	XAN	C	301	-	8,12,12	1.91	2 (25%)	4,17,17	4.99	4 (100%)
2	XAN	D	301	-	8,12,12	1.91	2 (25%)	4,17,17	5.00	4 (100%)
2	XAN	A	301	-	8,12,12	1.91	2 (25%)	4,17,17	4.99	4 (100%)

Mol	Type	Chain	Res	Link	Bond lengths			Bond angles		
					Counts	RMSZ	# Z > 2	Counts	RMSZ	# Z > 2
2	XAN	B	301	-	8,12,12	1.91	2 (25%)	4,17,17	4.99	4 (100%)

In the following table, the Chirals column lists the number of chiral outliers, the number of chiral centers analysed, the number of these observed in the model and the number defined in the Chemical Component Dictionary. Similar counts are reported in the Torsion and Rings columns. '-' means no outliers of that kind were identified.

Mol	Type	Chain	Res	Link	Chirals	Torsions	Rings
2	XAN	C	301	-	-	-	0/2/2/2
2	XAN	D	301	-	-	-	0/2/2/2
2	XAN	A	301	-	-	-	0/2/2/2
2	XAN	B	301	-	-	-	0/2/2/2

All (8) bond length outliers are listed below:

Mol	Chain	Res	Type	Atoms	Z	Observed(Å)	Ideal(Å)
2	C	301	XAN	C6-C5	4.20	1.48	1.41
2	B	301	XAN	C6-C5	4.19	1.48	1.41
2	D	301	XAN	C6-C5	4.19	1.48	1.41
2	A	301	XAN	C6-C5	4.18	1.48	1.41
2	D	301	XAN	C5-C4	2.46	1.47	1.40
2	A	301	XAN	C5-C4	2.44	1.47	1.40
2	C	301	XAN	C5-C4	2.43	1.47	1.40
2	B	301	XAN	C5-C4	2.41	1.47	1.40

All (16) bond angle outliers are listed below:

Mol	Chain	Res	Type	Atoms	Z	Observed(°)	Ideal(°)
2	D	301	XAN	C6-N1-C2	7.87	121.79	115.14
2	A	301	XAN	C6-N1-C2	7.85	121.77	115.14
2	C	301	XAN	C6-N1-C2	7.85	121.77	115.14
2	B	301	XAN	C6-N1-C2	7.85	121.77	115.14
2	B	301	XAN	C5-C6-N1	-4.09	117.84	123.43
2	D	301	XAN	C5-C6-N1	-4.09	117.84	123.43
2	A	301	XAN	C5-C6-N1	-4.08	117.86	123.43
2	C	301	XAN	C5-C6-N1	-4.07	117.87	123.43
2	B	301	XAN	C6-C5-C4	-3.91	117.06	120.80
2	C	301	XAN	C6-C5-C4	-3.90	117.07	120.80
2	A	301	XAN	C6-C5-C4	-3.89	117.08	120.80
2	D	301	XAN	C6-C5-C4	-3.89	117.08	120.80
2	D	301	XAN	C4-C5-N7	-2.52	106.77	109.40
2	A	301	XAN	C4-C5-N7	-2.51	106.78	109.40

Continued on next page...

Continued from previous page...

Mol	Chain	Res	Type	Atoms	Z	Observed(°)	Ideal(°)
2	C	301	XAN	C4-C5-N7	-2.49	106.80	109.40
2	B	301	XAN	C4-C5-N7	-2.47	106.82	109.40

There are no chirality outliers.

There are no torsion outliers.

There are no ring outliers.

2 monomers are involved in 3 short contacts:

Mol	Chain	Res	Type	Clashes	Symm-Clashes
2	C	301	XAN	2	0
2	B	301	XAN	1	0

5.7 Other polymers [i](#)

There are no such residues in this entry.

5.8 Polymer linkage issues [i](#)

There are no chain breaks in this entry.

6 Fit of model and data

6.1 Protein, DNA and RNA chains

In the following table, the column labelled ‘#RSRZ> 2’ contains the number (and percentage) of RSRZ outliers, followed by percent RSRZ outliers for the chain as percentile scores relative to all X-ray entries and entries of similar resolution. The OWAB column contains the minimum, median, 95th percentile and maximum values of the occupancy-weighted average B-factor per residue. The column labelled ‘Q< 0.9’ lists the number of (and percentage) of residues with an average occupancy less than 0.9.

Mol	Chain	Analysed	<RSRZ>	#RSRZ>2	OWAB(Å ²)	Q<0.9
1	A	272/272 (100%)	-0.06	3 (1%) 80 75	23, 32, 49, 115	0
1	B	272/272 (100%)	-0.02	6 (2%) 62 52	21, 32, 46, 72	0
1	C	272/272 (100%)	0.67	27 (9%) 7 4	30, 57, 85, 127	0
1	D	272/272 (100%)	0.07	7 (2%) 56 46	26, 36, 57, 99	0
All	All	1088/1088 (100%)	0.16	43 (3%) 38 28	21, 36, 75, 127	0

All (43) RSRZ outliers are listed below:

Mol	Chain	Res	Type	RSRZ
1	D	1	MET	7.1
1	D	103	GLN	5.9
1	C	200	LEU	5.3
1	C	105	GLY	5.1
1	B	104	SER	4.7
1	C	106	GLY	4.7
1	C	195	ALA	4.5
1	B	103	GLN	4.1
1	B	102	GLY	4.1
1	A	104	SER	4.0
1	A	1	MET	3.7
1	A	103	GLN	3.6
1	C	218	ASP	3.3
1	C	210	PRO	3.3
1	C	199	ALA	3.2
1	D	104	SER	3.2
1	C	178	ASP	3.1
1	D	102	GLY	2.9
1	C	1	MET	2.9
1	C	191	ALA	2.9
1	C	153	SER	2.8

Continued on next page...

Continued from previous page...

Mol	Chain	Res	Type	RSRZ
1	C	215	PRO	2.8
1	C	198	ALA	2.8
1	B	105	GLY	2.7
1	C	165	HIS	2.7
1	C	164	GLN	2.6
1	C	137	SER	2.5
1	C	103	GLN	2.5
1	D	8	GLY	2.5
1	C	196	ALA	2.5
1	B	272	PRO	2.3
1	C	167	THR	2.3
1	C	166	ILE	2.3
1	D	108	LYS	2.3
1	B	106	GLY	2.3
1	C	204	VAL	2.3
1	D	2	LEU	2.2
1	C	202	PRO	2.2
1	C	190	LEU	2.2
1	C	211	THR	2.2
1	C	4	GLU	2.2
1	C	104	SER	2.1
1	C	102	GLY	2.0

6.2 Non-standard residues in protein, DNA, RNA chains [\(i\)](#)

There are no non-standard protein/DNA/RNA residues in this entry.

6.3 Carbohydrates [\(i\)](#)

There are no carbohydrates in this entry.

6.4 Ligands [\(i\)](#)

In the following table, the Atoms column lists the number of modelled atoms in the group and the number defined in the chemical component dictionary. The B-factors column lists the minimum, median, 95th percentile and maximum values of B factors of atoms in the group. The column labelled 'Q< 0.9' lists the number of atoms with occupancy less than 0.9.

Mol	Type	Chain	Res	Atoms	RSCC	RSR	B-factors(Å ²)	Q<0.9
2	XAN	C	301	11/11	0.86	0.23	51,57,64,73	0

Continued on next page...

Continued from previous page...

Mol	Type	Chain	Res	Atoms	RSCC	RSR	B-factors(\AA^2)	Q<0.9
2	XAN	D	301	11/11	0.94	0.18	35,37,46,46	0
2	XAN	A	301	11/11	0.96	0.18	32,36,42,45	0
2	XAN	B	301	11/11	0.96	0.16	25,31,36,37	0

6.5 Other polymers [i](#)

There are no such residues in this entry.