



Full wwPDB X-ray Structure Validation Report ⓘ

Feb 23, 2024 – 03:37 AM EST

PDB ID : 3GQI
Title : Crystal Structure of activated receptor tyrosine kinase in complex with substrates
Authors : Bae, J.H.; Lew, E.D.; Yuzawa, S.; Tome, F.; Lax, I.; Schlessinger, J.
Deposited on : 2009-03-24
Resolution : 2.50 Å(reported)

This is a Full wwPDB X-ray Structure Validation Report for a publicly released PDB entry.

We welcome your comments at validation@mail.wwpdb.org

A user guide is available at

<https://www.wwpdb.org/validation/2017/XrayValidationReportHelp>

with specific help available everywhere you see the ⓘ symbol.

The types of validation reports are described at

<http://www.wwpdb.org/validation/2017/FAQs#types>.

The following versions of software and data (see [references ⓘ](#)) were used in the production of this report:

MolProbity : 4.02b-467
Mogul : 1.8.5 (274361), CSD as541be (2020)
Xtriage (Phenix) : 1.13
EDS : 2.36
buster-report : 1.1.7 (2018)
Percentile statistics : 20191225.v01 (using entries in the PDB archive December 25th 2019)
Refmac : 5.8.0158
CCP4 : 7.0.044 (Gargrove)
Ideal geometry (proteins) : Engh & Huber (2001)
Ideal geometry (DNA, RNA) : Parkinson et al. (1996)
Validation Pipeline (wwPDB-VP) : 2.36

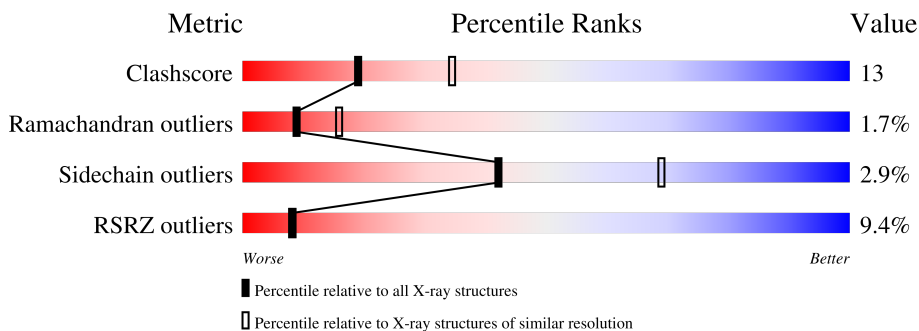
1 Overall quality at a glance

The following experimental techniques were used to determine the structure:

X-RAY DIFFRACTION

The reported resolution of this entry is 2.50 Å.

Percentile scores (ranging between 0-100) for global validation metrics of the entry are shown in the following graphic. The table shows the number of entries on which the scores are based.



Metric	Whole archive (#Entries)	Similar resolution (#Entries, resolution range(Å))
Clashscore	141614	5346 (2.50-2.50)
Ramachandran outliers	138981	5231 (2.50-2.50)
Sidechain outliers	138945	5233 (2.50-2.50)
RSRZ outliers	127900	4559 (2.50-2.50)

The table below summarises the geometric issues observed across the polymeric chains and their fit to the electron density. The red, orange, yellow and green segments of the lower bar indicate the fraction of residues that contain outliers for ≥ 3 , 2, 1 and 0 types of geometric quality criteria respectively. A grey segment represents the fraction of residues that are not modelled. The numeric value for each fraction is indicated below the corresponding segment, with a dot representing fractions $\leq 5\%$. The upper red bar (where present) indicates the fraction of residues that have poor fit to the electron density. The numeric value is given above the bar.

Mol	Chain	Length	Quality of chain
1	A	326	
2	B	226	

2 Entry composition

There are 6 unique types of molecules in this entry. The entry contains 4369 atoms, of which 0 are hydrogens and 0 are deuteriums.

In the tables below, the ZeroOcc column contains the number of atoms modelled with zero occupancy, the AltConf column contains the number of residues with at least one atom in alternate conformation and the Trace column contains the number of residues modelled with at most 2 atoms.

- Molecule 1 is a protein called Basic fibroblast growth factor receptor 1.

Mol	Chain	Residues	Atoms						ZeroOcc	AltConf	Trace
			Total	C	N	O	P	S			
1	A	307	2450	1552	417	461	3	17	0	0	0

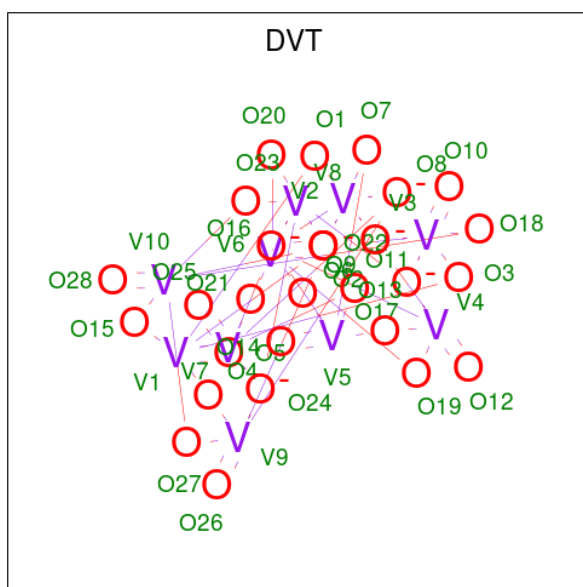
There are 13 discrepancies between the modelled and reference sequences:

Chain	Residue	Modelled	Actual	Comment	Reference
A	449	MET	-	expression tag	UNP P11362
A	450	GLY	-	expression tag	UNP P11362
A	451	HIS	-	expression tag	UNP P11362
A	452	HIS	-	expression tag	UNP P11362
A	453	HIS	-	expression tag	UNP P11362
A	454	HIS	-	expression tag	UNP P11362
A	455	HIS	-	expression tag	UNP P11362
A	456	HIS	-	expression tag	UNP P11362
A	457	MET	-	expression tag	UNP P11362
A	488	ALA	CYS	engineered mutation	UNP P11362
A	583	PHE	TYR	engineered mutation	UNP P11362
A	584	SER	CYS	engineered mutation	UNP P11362
A	585	PHE	TYR	engineered mutation	UNP P11362

- Molecule 2 is a protein called Phospholipase C-gamma-1.

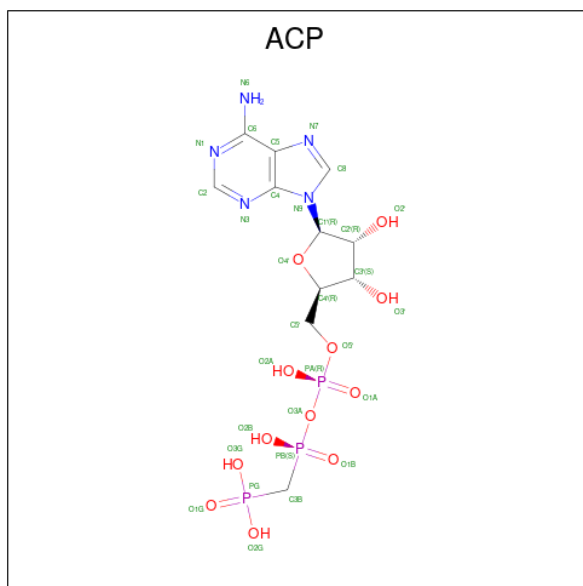
Mol	Chain	Residues	Atoms					ZeroOcc	AltConf	Trace
			Total	C	N	O	S			
2	B	226	1772	1117	314	332	9	0	0	0

- Molecule 3 is DECAVANADATE (three-letter code: DVT) (formula: O₂₈V₁₀).



Mol	Chain	Residues	Atoms			ZeroOcc	AltConf
			Total	O	V		
3	A	1	38	28	10	0	0

- Molecule 4 is PHOSPHOMETHYLPHOSPHONIC ACID ADENYLATE ESTER (three-letter code: ACP) (formula: $C_{11}H_{18}N_5O_{12}P_3$).



Mol	Chain	Residues	Atoms				ZeroOcc	AltConf	
			Total	C	N	O			P
4	A	1	31	11	5	12	3	0	0

- Molecule 5 is MAGNESIUM ION (three-letter code: MG) (formula: Mg).

Mol	Chain	Residues	Atoms	ZeroOcc	AltConf
5	A	1	Total Mg 1 1	0	0

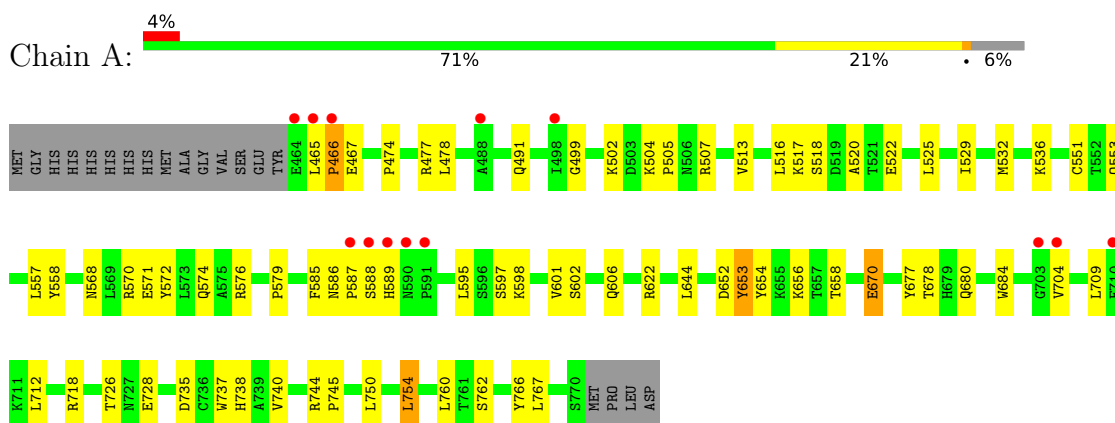
- Molecule 6 is water.

Mol	Chain	Residues	Atoms	ZeroOcc	AltConf
6	A	55	Total O 55 55	0	0
6	B	22	Total O 22 22	0	0

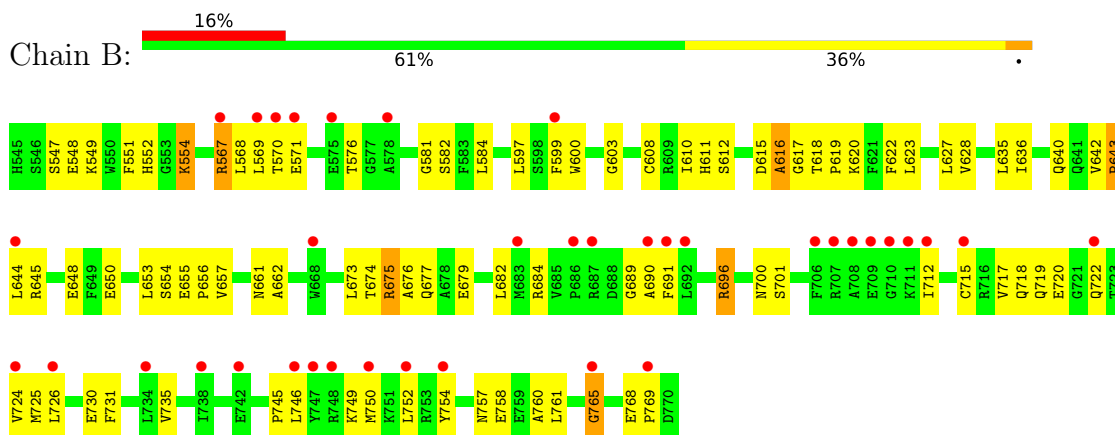
3 Residue-property plots

These plots are drawn for all protein, RNA, DNA and oligosaccharide chains in the entry. The first graphic for a chain summarises the proportions of the various outlier classes displayed in the second graphic. The second graphic shows the sequence view annotated by issues in geometry and electron density. Residues are color-coded according to the number of geometric quality criteria for which they contain at least one outlier: green = 0, yellow = 1, orange = 2 and red = 3 or more. A red dot above a residue indicates a poor fit to the electron density ($RSRZ > 2$). Stretches of 2 or more consecutive residues without any outlier are shown as a green connector. Residues present in the sample, but not in the model, are shown in grey.

- Molecule 1: Basic fibroblast growth factor receptor 1



- Molecule 2: Phospholipase C-gamma-1



4 Data and refinement statistics

Property	Value	Source
Space group	C 1 2 1	Depositor
Cell constants a, b, c, α , β , γ	133.94Å 64.60Å 94.21Å 90.00° 96.50° 90.00°	Depositor
Resolution (Å)	50.00 – 2.50 48.31 – 2.50	Depositor EDS
% Data completeness (in resolution range)	93.5 (50.00-2.50) 93.2 (48.31-2.50)	Depositor EDS
R_{merge}	0.07	Depositor
R_{sym}	(Not available)	Depositor
$\langle I/\sigma(I) \rangle$ ¹	2.84 (at 2.48Å)	Xtrriage
Refinement program	CNS	Depositor
R, R_{free}	0.249 , 0.289 0.245 , (Not available)	Depositor DCC
R_{free} test set	No test flags present.	wwPDB-VP
Wilson B-factor (Å ²)	64.2	Xtrriage
Anisotropy	0.410	Xtrriage
Bulk solvent k_{sol} (e/Å ³), B_{sol} (Å ²)	0.32 , 55.1	EDS
L-test for twinning ²	$\langle L \rangle = 0.49$, $\langle L^2 \rangle = 0.32$	Xtrriage
Estimated twinning fraction	No twinning to report.	Xtrriage
F_o, F_c correlation	0.94	EDS
Total number of atoms	4369	wwPDB-VP
Average B, all atoms (Å ²)	80.0	wwPDB-VP

Xtrriage's analysis on translational NCS is as follows: *The largest off-origin peak in the Patterson function is 6.39% of the height of the origin peak. No significant pseudotranslation is detected.*

¹Intensities estimated from amplitudes.

²Theoretical values of $\langle |L| \rangle$, $\langle L^2 \rangle$ for acentric reflections are 0.5, 0.333 respectively for untwinned datasets, and 0.375, 0.2 for perfectly twinned datasets.

5 Model quality [i](#)

5.1 Standard geometry [i](#)

Bond lengths and bond angles in the following residue types are not validated in this section: DVT, PTR, ACP, MG

The Z score for a bond length (or angle) is the number of standard deviations the observed value is removed from the expected value. A bond length (or angle) with $|Z| > 5$ is considered an outlier worth inspection. RMSZ is the root-mean-square of all Z scores of the bond lengths (or angles).

Mol	Chain	Bond lengths		Bond angles	
		RMSZ	# Z >5	RMSZ	# Z >5
1	A	0.47	0/2452	0.68	0/3315
2	B	0.43	0/1815	0.66	2/2461 (0.1%)
All	All	0.46	0/4267	0.67	2/5776 (0.0%)

There are no bond length outliers.

All (2) bond angle outliers are listed below:

Mol	Chain	Res	Type	Atoms	Z	Observed(°)	Ideal(°)
2	B	765	GLY	N-CA-C	5.05	125.72	113.10
2	B	768	GLU	N-CA-C	5.04	124.62	111.00

There are no chirality outliers.

There are no planarity outliers.

5.2 Too-close contacts [i](#)

In the following table, the Non-H and H(model) columns list the number of non-hydrogen atoms and hydrogen atoms in the chain respectively. The H(added) column lists the number of hydrogen atoms added and optimized by MolProbity. The Clashes column lists the number of clashes within the asymmetric unit, whereas Symm-Clashes lists symmetry-related clashes.

Mol	Chain	Non-H	H(model)	H(added)	Clashes	Symm-Clashes
1	A	2450	0	2421	46	0
2	B	1772	0	1642	65	0
3	A	38	0	0	1	0
4	A	31	0	14	0	0
5	A	1	0	0	0	0
6	A	55	0	0	2	0
6	B	22	0	0	2	0

Continued on next page...

Continued from previous page...

Mol	Chain	Non-H	H(model)	H(added)	Clashes	Symm-Clashes
All	All	4369	0	4077	109	0

The all-atom clashscore is defined as the number of clashes found per 1000 atoms (including hydrogen atoms). The all-atom clashscore for this structure is 13.

All (109) close contacts within the same asymmetric unit are listed below, sorted by their clash magnitude.

Atom-1	Atom-2	Interatomic distance (Å)	Clash overlap (Å)
1:A:598:LYS:HD3	1:A:762:SER:HB3	1.49	0.93
2:B:745:PRO:HB3	2:B:749:LYS:HA	1.53	0.90
1:A:738:HIS:HD2	1:A:740:VAL:H	1.16	0.89
2:B:623:LEU:HD21	2:B:635:LEU:HD21	1.63	0.81
1:A:465:LEU:HB3	1:A:466:PRO:HD2	1.69	0.73
1:A:767:LEU:HD12	2:B:608:CYS:HB2	1.72	0.71
2:B:627:LEU:HA	6:B:25:HOH:O	1.91	0.70
2:B:700:ASN:HB3	2:B:719:GLN:HB3	1.73	0.69
1:A:738:HIS:CD2	1:A:740:VAL:H	2.05	0.69
1:A:586:ASN:HA	1:A:588:SER:H	1.58	0.67
2:B:757:ASN:H	2:B:760:ALA:HB3	1.61	0.65
1:A:586:ASN:CA	1:A:588:SER:H	2.11	0.63
2:B:675:ARG:HG3	2:B:676:ALA:H	1.63	0.63
1:A:728:GLU:HB2	6:A:44:HOH:O	1.99	0.62
2:B:696:ARG:HG2	2:B:701:SER:O	2.00	0.61
2:B:619:PRO:O	2:B:620:LYS:HD2	2.00	0.61
2:B:567:ARG:HB3	2:B:567:ARG:HH21	1.66	0.61
2:B:679:GLU:HG2	2:B:712:ILE:HG12	1.82	0.61
2:B:674:THR:HB	2:B:677:GLN:HB2	1.82	0.60
2:B:673:LEU:HD22	2:B:677:GLN:HB3	1.83	0.60
1:A:570:ARG:O	1:A:574:GLN:HG3	2.02	0.60
2:B:597:LEU:HD21	2:B:653:LEU:HD11	1.84	0.59
2:B:675:ARG:HG3	2:B:676:ALA:N	2.17	0.59
2:B:690:ALA:HA	2:B:754:TYR:HB2	1.84	0.58
1:A:525:LEU:O	1:A:529:ILE:HG12	2.04	0.57
1:A:507:ARG:HG2	3:A:1:DVT:O22	2.05	0.57
1:A:465:LEU:CB	1:A:466:PRO:HD2	2.35	0.57
1:A:738:HIS:HD2	1:A:740:VAL:N	1.97	0.55
1:A:572:TYR:O	1:A:576:ARG:HG2	2.06	0.54
1:A:579:PRO:HG3	1:A:585:PHE:CD2	2.43	0.54
2:B:746:LEU:HG	2:B:752:LEU:HD11	1.90	0.54
1:A:586:ASN:HA	1:A:588:SER:N	2.22	0.53
1:A:602:SER:O	1:A:606:GLN:HG3	2.08	0.53

Continued on next page...

Continued from previous page...

Atom-1	Atom-2	Interatomic distance (Å)	Clash overlap (Å)
1:A:529:ILE:HD13	1:A:557:LEU:HD22	1.91	0.53
2:B:610:ILE:HG12	2:B:623:LEU:HD11	1.90	0.53
2:B:644:LEU:O	2:B:650:GLU:HA	2.10	0.52
2:B:701:SER:HB3	2:B:718:GLN:OE1	2.10	0.51
2:B:554:LYS:HE3	2:B:554:LYS:HA	1.91	0.51
1:A:767:LEU:HD11	2:B:599:PHE:CZ	2.45	0.51
2:B:548:GLU:O	2:B:551:PHE:HB3	2.11	0.51
1:A:477:ARG:HH22	1:A:502:LYS:NZ	2.09	0.51
2:B:645:ARG:HH21	2:B:645:ARG:HG2	1.75	0.50
2:B:548:GLU:O	2:B:549:LYS:HB2	2.11	0.50
2:B:612:SER:HA	2:B:620:LYS:O	2.11	0.50
2:B:682:LEU:HD12	2:B:712:ILE:CD1	2.43	0.49
2:B:582:SER:HA	2:B:655:GLU:O	2.12	0.49
1:A:532:MET:O	1:A:536:LYS:HG3	2.13	0.49
1:A:622:ARG:HD2	1:A:677:TYR:CD2	2.47	0.49
2:B:684:ARG:O	2:B:765:GLY:HA2	2.13	0.49
2:B:600:TRP:CZ2	2:B:603:GLY:HA2	2.46	0.48
2:B:567:ARG:HH21	2:B:567:ARG:CB	2.26	0.48
2:B:717:VAL:HG22	2:B:726:LEU:HD13	1.95	0.47
2:B:725:MET:SD	2:B:730:GLU:HB2	2.54	0.47
2:B:552:HIS:CE1	2:B:584:LEU:HD22	2.49	0.47
2:B:662:ALA:CB	2:B:735:VAL:HG21	2.44	0.47
1:A:750:LEU:O	1:A:754:LEU:HB2	2.14	0.47
1:A:735:ASP:HB3	1:A:745:PRO:HD3	1.96	0.47
1:A:499:GLY:HA2	1:A:504:LYS:O	2.16	0.46
2:B:569:LEU:CD2	2:B:657:VAL:HG21	2.44	0.46
2:B:689:GLY:HA2	2:B:750:MET:SD	2.55	0.46
1:A:568:ASN:OD1	1:A:571:GLU:HG3	2.16	0.46
1:A:595:LEU:HD23	6:A:74:HOH:O	2.15	0.46
2:B:548:GLU:HG3	2:B:549:LYS:H	1.81	0.46
2:B:618:THR:CG2	2:B:619:PRO:HD2	2.46	0.46
2:B:724:VAL:HG23	2:B:731:PHE:HB2	1.97	0.46
1:A:504:LYS:N	1:A:505:PRO:HD3	2.31	0.46
2:B:673:LEU:HD23	2:B:677:GLN:OE1	2.16	0.45
2:B:752:LEU:HD12	2:B:752:LEU:N	2.31	0.45
2:B:568:LEU:HB2	2:B:661:ASN:ND2	2.31	0.45
1:A:474:PRO:CD	1:A:477:ARG:HH21	2.30	0.45
1:A:670:GLU:OE1	1:A:744:ARG:NH2	2.50	0.45
2:B:570:THR:HA	2:B:600:TRP:CZ3	2.52	0.45
1:A:704:VAL:HG11	1:A:712:LEU:HD12	1.99	0.44
2:B:547:SER:O	2:B:549:LYS:HG3	2.17	0.44

Continued on next page...

Continued from previous page...

Atom-1	Atom-2	Interatomic distance (Å)	Clash overlap (Å)
2:B:568:LEU:HB2	2:B:661:ASN:HD22	1.81	0.44
1:A:652:ASP:O	1:A:653:PTR:HB2	2.18	0.44
2:B:615:ASP:C	2:B:617:GLY:H	2.21	0.44
2:B:691:PHE:CE2	2:B:752:LEU:HD23	2.53	0.44
2:B:724:VAL:CG2	2:B:731:PHE:HB2	2.47	0.44
1:A:656:LYS:HE3	1:A:658:THR:O	2.17	0.44
1:A:522:GLU:H	1:A:522:GLU:CD	2.21	0.44
1:A:551:CYS:HB2	1:A:558:TYR:HB2	2.00	0.44
1:A:478:LEU:HD21	1:A:513:VAL:HG21	2.00	0.44
2:B:616:ALA:C	2:B:618:THR:H	2.22	0.43
2:B:618:THR:HG22	2:B:619:PRO:HD2	2.00	0.43
2:B:701:SER:HB3	2:B:718:GLN:CD	2.39	0.43
2:B:620:LYS:HG3	2:B:628:VAL:HG11	2.00	0.42
2:B:636:ILE:O	2:B:640:GLN:HG3	2.18	0.42
1:A:516:LEU:HB3	1:A:520:ALA:CB	2.50	0.42
1:A:670:GLU:H	1:A:670:GLU:HG3	1.34	0.42
2:B:642:VAL:HA	2:B:643:PRO:HD3	1.81	0.42
1:A:684:TRP:CE3	1:A:737:TRP:HA	2.54	0.42
1:A:622:ARG:HD2	1:A:677:TYR:CE2	2.55	0.42
2:B:627:LEU:HD12	6:B:25:HOH:O	2.19	0.42
1:A:467:GLU:OE1	1:A:553:GLN:HG3	2.20	0.42
1:A:597:SER:O	1:A:601:VAL:HG23	2.20	0.42
2:B:757:ASN:O	2:B:761:LEU:HG	2.19	0.42
2:B:567:ARG:O	2:B:571:GLU:HG2	2.19	0.42
2:B:581:GLY:C	2:B:654:SER:H	2.22	0.42
2:B:620:LYS:HG3	2:B:628:VAL:CG1	2.50	0.42
1:A:529:ILE:HD13	1:A:557:LEU:CD2	2.50	0.41
1:A:678:THR:OG1	1:A:680:GLN:HB2	2.20	0.41
1:A:491:GLN:HE21	1:A:517:LYS:HA	1.85	0.41
2:B:576:THR:HG22	2:B:576:THR:O	2.21	0.41
2:B:611:HIS:HB2	2:B:622:PHE:CE2	2.55	0.41
2:B:691:PHE:CE1	2:B:752:LEU:HB3	2.56	0.41
1:A:718:ARG:NH2	1:A:737:TRP:O	2.54	0.40
2:B:720:GLU:HG3	2:B:725:MET:HG3	2.03	0.40
2:B:691:PHE:CZ	2:B:752:LEU:HB3	2.56	0.40

There are no symmetry-related clashes.

5.3 Torsion angles [i](#)

5.3.1 Protein backbone [i](#)

In the following table, the Percentiles column shows the percent Ramachandran outliers of the chain as a percentile score with respect to all X-ray entries followed by that with respect to entries of similar resolution.

The Analysed column shows the number of residues for which the backbone conformation was analysed, and the total number of residues.

Mol	Chain	Analysed	Favoured	Allowed	Outliers	Percentiles	
1	A	302/326 (93%)	280 (93%)	18 (6%)	4 (1%)	12	21
2	B	224/226 (99%)	197 (88%)	22 (10%)	5 (2%)	6	10
All	All	526/552 (95%)	477 (91%)	40 (8%)	9 (2%)	9	16

All (9) Ramachandran outliers are listed below:

Mol	Chain	Res	Type
1	A	589	HIS
2	B	648	GLU
2	B	769	PRO
1	A	466	PRO
1	A	726	THR
2	B	616	ALA
2	B	656	PRO
2	B	643	PRO
1	A	587	PRO

5.3.2 Protein sidechains [i](#)

In the following table, the Percentiles column shows the percent sidechain outliers of the chain as a percentile score with respect to all X-ray entries followed by that with respect to entries of similar resolution.

The Analysed column shows the number of residues for which the sidechain conformation was analysed, and the total number of residues.

Mol	Chain	Analysed	Rotameric	Outliers	Percentiles	
1	A	263/283 (93%)	257 (98%)	6 (2%)	50	76
2	B	179/199 (90%)	172 (96%)	7 (4%)	32	57
All	All	442/482 (92%)	429 (97%)	13 (3%)	42	69

All (13) residues with a non-rotameric sidechain are listed below:

Mol	Chain	Res	Type
1	A	518	SER
1	A	644	LEU
1	A	670	GLU
1	A	709	LEU
1	A	754	LEU
1	A	760	LEU
2	B	554	LYS
2	B	567	ARG
2	B	675	ARG
2	B	696	ARG
2	B	715	CYS
2	B	722	GLN
2	B	758	GLU

Sometimes sidechains can be flipped to improve hydrogen bonding and reduce clashes. All (9) such sidechains are listed below:

Mol	Chain	Res	Type
1	A	491	GLN
1	A	546	ASN
1	A	680	GLN
1	A	738	HIS
2	B	602	ASN
2	B	606	GLN
2	B	661	ASN
2	B	718	GLN
2	B	722	GLN

5.3.3 RNA [i](#)

There are no RNA molecules in this entry.

5.4 Non-standard residues in protein, DNA, RNA chains [i](#)

3 non-standard protein/DNA/RNA residues are modelled in this entry.

In the following table, the Counts columns list the number of bonds (or angles) for which Mogul statistics could be retrieved, the number of bonds (or angles) that are observed in the model and the number of bonds (or angles) that are defined in the Chemical Component Dictionary. The Link column lists molecule types, if any, to which the group is linked. The Z score for a bond length (or angle) is the number of standard deviations the observed value is removed from the

expected value. A bond length (or angle) with $|Z| > 2$ is considered an outlier worth inspection. RMSZ is the root-mean-square of all Z scores of the bond lengths (or angles).

Mol	Type	Chain	Res	Link	Bond lengths			Bond angles		
					Counts	RMSZ	# Z > 2	Counts	RMSZ	# Z > 2
1	PTR	A	654	1	15,16,17	1.99	6 (40%)	19,22,24	1.50	2 (10%)
1	PTR	A	766	1	15,16,17	1.95	5 (33%)	19,22,24	1.36	3 (15%)
1	PTR	A	653	1	15,16,17	1.97	7 (46%)	19,22,24	2.20	3 (15%)

In the following table, the Chirals column lists the number of chiral outliers, the number of chiral centers analysed, the number of these observed in the model and the number defined in the Chemical Component Dictionary. Similar counts are reported in the Torsion and Rings columns. '-' means no outliers of that kind were identified.

Mol	Type	Chain	Res	Link	Chirals	Torsions	Rings
1	PTR	A	654	1	-	0/10/11/13	0/1/1/1
1	PTR	A	766	1	-	1/10/11/13	0/1/1/1
1	PTR	A	653	1	-	0/10/11/13	0/1/1/1

All (18) bond length outliers are listed below:

Mol	Chain	Res	Type	Atoms	Z	Observed(Å)	Ideal(Å)
1	A	766	PTR	CE1-CZ	3.78	1.46	1.38
1	A	654	PTR	CE2-CZ	3.43	1.45	1.38
1	A	654	PTR	CE1-CZ	3.37	1.45	1.38
1	A	653	PTR	CE2-CZ	3.32	1.45	1.38
1	A	653	PTR	CE1-CZ	3.13	1.44	1.38
1	A	766	PTR	CD2-CG	2.93	1.45	1.38
1	A	766	PTR	P-OH	-2.88	1.54	1.59
1	A	766	PTR	CE2-CZ	2.79	1.44	1.38
1	A	654	PTR	CD1-CG	2.78	1.44	1.38
1	A	654	PTR	P-OH	-2.72	1.54	1.59
1	A	653	PTR	CD1-CG	2.65	1.44	1.38
1	A	653	PTR	P-OH	-2.45	1.55	1.59
1	A	653	PTR	CE1-CD1	2.40	1.43	1.38
1	A	766	PTR	CD1-CG	2.31	1.43	1.38
1	A	653	PTR	CD2-CG	2.21	1.43	1.38
1	A	654	PTR	CE1-CD1	2.16	1.42	1.38
1	A	654	PTR	CD2-CG	2.15	1.43	1.38
1	A	653	PTR	CE2-CD2	2.12	1.42	1.38

All (8) bond angle outliers are listed below:

Mol	Chain	Res	Type	Atoms	Z	Observed(°)	Ideal(°)
1	A	653	PTR	CG-CB-CA	7.09	128.46	114.10
1	A	653	PTR	P-OH-CZ	5.04	139.91	123.75
1	A	654	PTR	P-OH-CZ	5.03	139.86	123.75
1	A	766	PTR	P-OH-CZ	3.48	134.91	123.75
1	A	654	PTR	O3P-P-OH	2.56	113.25	105.24
1	A	766	PTR	O3P-P-OH	2.39	112.72	105.24
1	A	653	PTR	O3P-P-OH	2.39	112.70	105.24
1	A	766	PTR	CG-CB-CA	2.18	118.50	114.10

There are no chirality outliers.

All (1) torsion outliers are listed below:

Mol	Chain	Res	Type	Atoms
1	A	766	PTR	CZ-OH-P-O1P

There are no ring outliers.

1 monomer is involved in 1 short contact:

Mol	Chain	Res	Type	Clashes	Symm-Clashes
1	A	653	PTR	1	0

5.5 Carbohydrates [i](#)

There are no monosaccharides in this entry.

5.6 Ligand geometry [i](#)

Of 3 ligands modelled in this entry, 1 is monoatomic - leaving 2 for Mogul analysis.

In the following table, the Counts columns list the number of bonds (or angles) for which Mogul statistics could be retrieved, the number of bonds (or angles) that are observed in the model and the number of bonds (or angles) that are defined in the Chemical Component Dictionary. The Link column lists molecule types, if any, to which the group is linked. The Z score for a bond length (or angle) is the number of standard deviations the observed value is removed from the expected value. A bond length (or angle) with $|Z| > 2$ is considered an outlier worth inspection. RMSZ is the root-mean-square of all Z scores of the bond lengths (or angles).

Mol	Type	Chain	Res	Link	Bond lengths			Bond angles		
					Counts	RMSZ	# Z > 2	Counts	RMSZ	# Z > 2
3	DVT	A	1	-	60,60,60	1.46	8 (13%)	-		
4	ACP	A	775	-	27,33,33	1.81	6 (22%)	32,52,52	1.56	8 (25%)

In the following table, the Chirals column lists the number of chiral outliers, the number of chiral centers analysed, the number of these observed in the model and the number defined in the Chemical Component Dictionary. Similar counts are reported in the Torsion and Rings columns. '-' means no outliers of that kind were identified.

Mol	Type	Chain	Res	Link	Chirals	Torsions	Rings
4	ACP	A	775	-	-	1/15/38/38	0/3/3/3

All (14) bond length outliers are listed below:

Mol	Chain	Res	Type	Atoms	Z	Observed(Å)	Ideal(Å)
4	A	775	ACP	PG-O1G	5.52	1.61	1.50
3	A	1	DVT	O16-V5	-4.65	2.19	2.33
3	A	1	DVT	O16-V2	-4.00	1.99	2.11
4	A	775	ACP	PB-O3A	3.31	1.62	1.58
4	A	775	ACP	PB-O2B	-3.10	1.49	1.56
3	A	1	DVT	O16-V8	-2.95	2.03	2.11
4	A	775	ACP	PG-O2G	2.91	1.61	1.54
3	A	1	DVT	O2-V8	-2.84	2.03	2.11
4	A	775	ACP	PG-O3G	-2.80	1.48	1.54
3	A	1	DVT	O8-V7	2.65	2.11	2.01
3	A	1	DVT	O12-V4	2.59	1.64	1.60
3	A	1	DVT	O1-V2	2.46	1.73	1.69
3	A	1	DVT	O7-V2	-2.40	1.65	1.69
4	A	775	ACP	O4'-C1'	2.40	1.44	1.41

All (8) bond angle outliers are listed below:

Mol	Chain	Res	Type	Atoms	Z	Observed(°)	Ideal(°)
4	A	775	ACP	N3-C2-N1	-4.02	122.40	128.68
4	A	775	ACP	C4-C5-N7	-3.44	105.81	109.40
4	A	775	ACP	PB-O3A-PA	-3.32	122.04	132.56
4	A	775	ACP	O3G-PG-C3B	2.58	112.66	106.40
4	A	775	ACP	O2B-PB-O1B	2.57	118.65	110.07
4	A	775	ACP	O1G-PG-C3B	-2.38	106.11	111.24
4	A	775	ACP	O2G-PG-O1G	-2.28	106.36	112.39
4	A	775	ACP	C2'-C3'-C4'	-2.20	98.36	102.64

There are no chirality outliers.

All (1) torsion outliers are listed below:

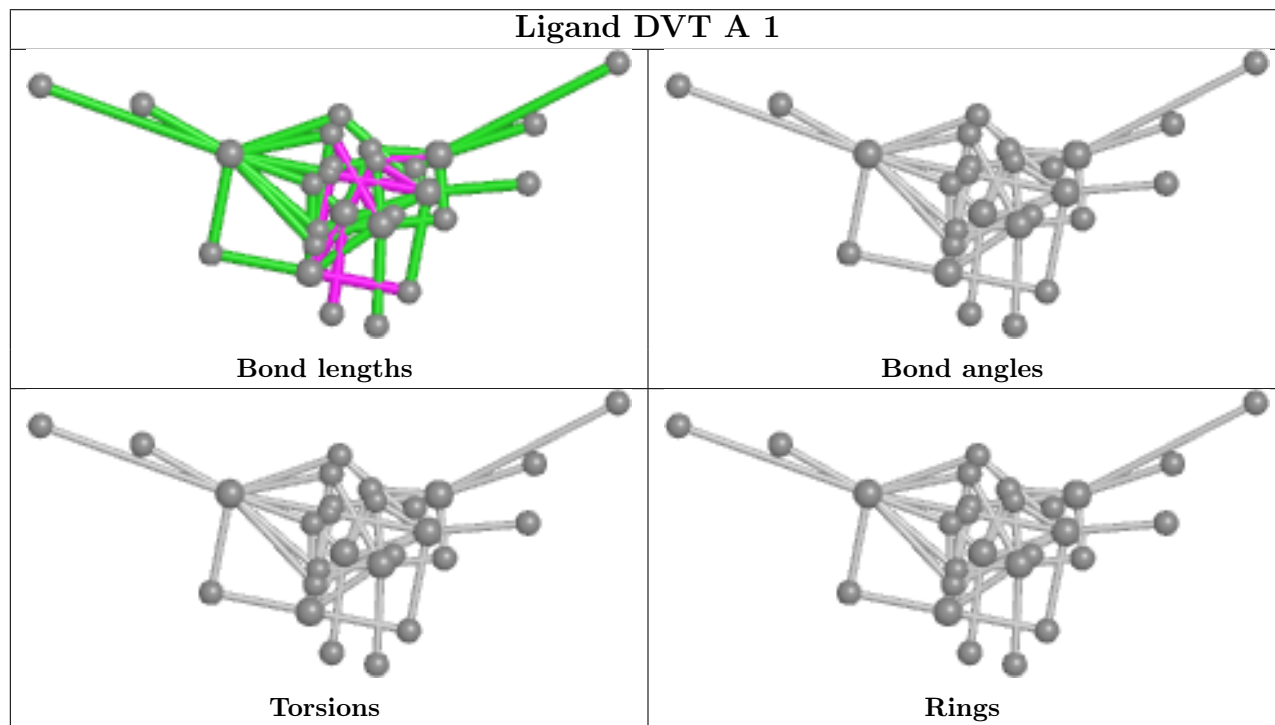
Mol	Chain	Res	Type	Atoms
4	A	775	ACP	PB-O3A-PA-O1A

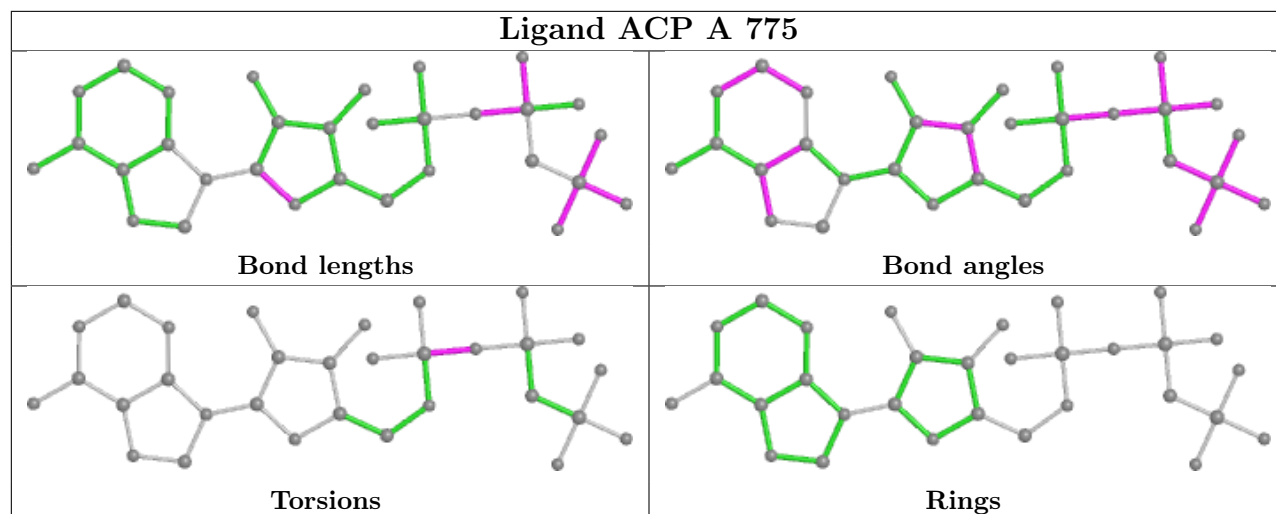
There are no ring outliers.

1 monomer is involved in 1 short contact:

Mol	Chain	Res	Type	Clashes	Symm-Clashes
3	A	1	DVT	1	0

The following is a two-dimensional graphical depiction of Mogul quality analysis of bond lengths, bond angles, torsion angles, and ring geometry for all instances of the Ligand of Interest. In addition, ligands with molecular weight > 250 and outliers as shown on the validation Tables will also be included. For torsion angles, if less than 5% of the Mogul distribution of torsion angles is within 10 degrees of the torsion angle in question, then that torsion angle is considered an outlier. Any bond that is central to one or more torsion angles identified as an outlier by Mogul will be highlighted in the graph. For rings, the root-mean-square deviation (RMSD) between the ring in question and similar rings identified by Mogul is calculated over all ring torsion angles. If the average RMSD is greater than 60 degrees and the minimal RMSD between the ring in question and any Mogul-identified rings is also greater than 60 degrees, then that ring is considered an outlier. The outliers are highlighted in purple. The color gray indicates Mogul did not find sufficient equivalents in the CSD to analyse the geometry.





5.7 Other polymers [i](#)

There are no such residues in this entry.

5.8 Polymer linkage issues [i](#)

There are no chain breaks in this entry.

6 Fit of model and data

6.1 Protein, DNA and RNA chains

In the following table, the column labelled ‘#RSRZ > 2’ contains the number (and percentage) of RSRZ outliers, followed by percent RSRZ outliers for the chain as percentile scores relative to all X-ray entries and entries of similar resolution. The OWAB column contains the minimum, median, 95th percentile and maximum values of the occupancy-weighted average B-factor per residue. The column labelled ‘Q < 0.9’ lists the number of (and percentage) of residues with an average occupancy less than 0.9.

Mol	Chain	Analysed	<RSRZ>	#RSRZ>2	OWAB(Å ²)	Q<0.9
1	A	304/326 (93%)	0.45	13 (4%) 35 38	35, 67, 103, 127	0
2	B	226/226 (100%)	1.13	37 (16%) 1 1	55, 97, 120, 123	0
All	All	530/552 (96%)	0.74	50 (9%) 8 8	35, 82, 117, 127	0

All (50) RSRZ outliers are listed below:

Mol	Chain	Res	Type	RSRZ
2	B	708	ALA	8.2
2	B	712	ILE	7.6
2	B	711	LYS	6.3
2	B	686	PRO	5.8
1	A	465	LEU	5.7
2	B	747	TYR	5.6
2	B	706	PHE	5.3
2	B	709	GLU	4.6
2	B	687	ARG	4.2
2	B	722	GLN	4.1
2	B	754	TYR	4.1
2	B	571	GLU	4.1
1	A	587	PRO	4.0
2	B	690	ALA	4.0
1	A	464	GLU	4.0
1	A	591	PRO	4.0
2	B	746	LEU	4.0
1	A	590	ASN	3.8
2	B	644	LEU	3.6
2	B	710	GLY	3.5
2	B	738	ILE	3.3
1	A	488	ALA	3.3
2	B	765	GLY	3.2
2	B	752	LEU	3.1

Continued on next page...

Continued from previous page...

Mol	Chain	Res	Type	RSRZ
2	B	734	LEU	3.0
2	B	726	LEU	3.0
2	B	724	VAL	3.0
1	A	466	PRO	2.9
2	B	567	ARG	2.8
2	B	750	MET	2.8
2	B	578	ALA	2.8
2	B	570	THR	2.5
1	A	589	HIS	2.4
2	B	691	PHE	2.4
2	B	748	ARG	2.4
2	B	692	LEU	2.4
1	A	704	VAL	2.3
2	B	715	CYS	2.3
1	A	588	SER	2.3
2	B	599	PHE	2.3
2	B	683	MET	2.3
2	B	707	ARG	2.2
1	A	710	PHE	2.2
2	B	668	TRP	2.1
2	B	769	PRO	2.1
1	A	498	ILE	2.1
2	B	575	GLU	2.1
1	A	703	GLY	2.0
2	B	742	GLU	2.0
2	B	569	LEU	2.0

6.2 Non-standard residues in protein, DNA, RNA chains [\(i\)](#)

In the following table, the Atoms column lists the number of modelled atoms in the group and the number defined in the chemical component dictionary. The B-factors column lists the minimum, median, 95th percentile and maximum values of B factors of atoms in the group. The column labelled 'Q< 0.9' lists the number of atoms with occupancy less than 0.9.

Mol	Type	Chain	Res	Atoms	RSCC	RSR	B-factors(Å ²)	Q<0.9
1	PTR	A	653	16/17	0.89	0.17	70,88,97,97	0
1	PTR	A	766	16/17	0.95	0.15	63,71,89,92	0
1	PTR	A	654	16/17	0.96	0.13	59,63,67,69	0

6.3 Carbohydrates [i](#)

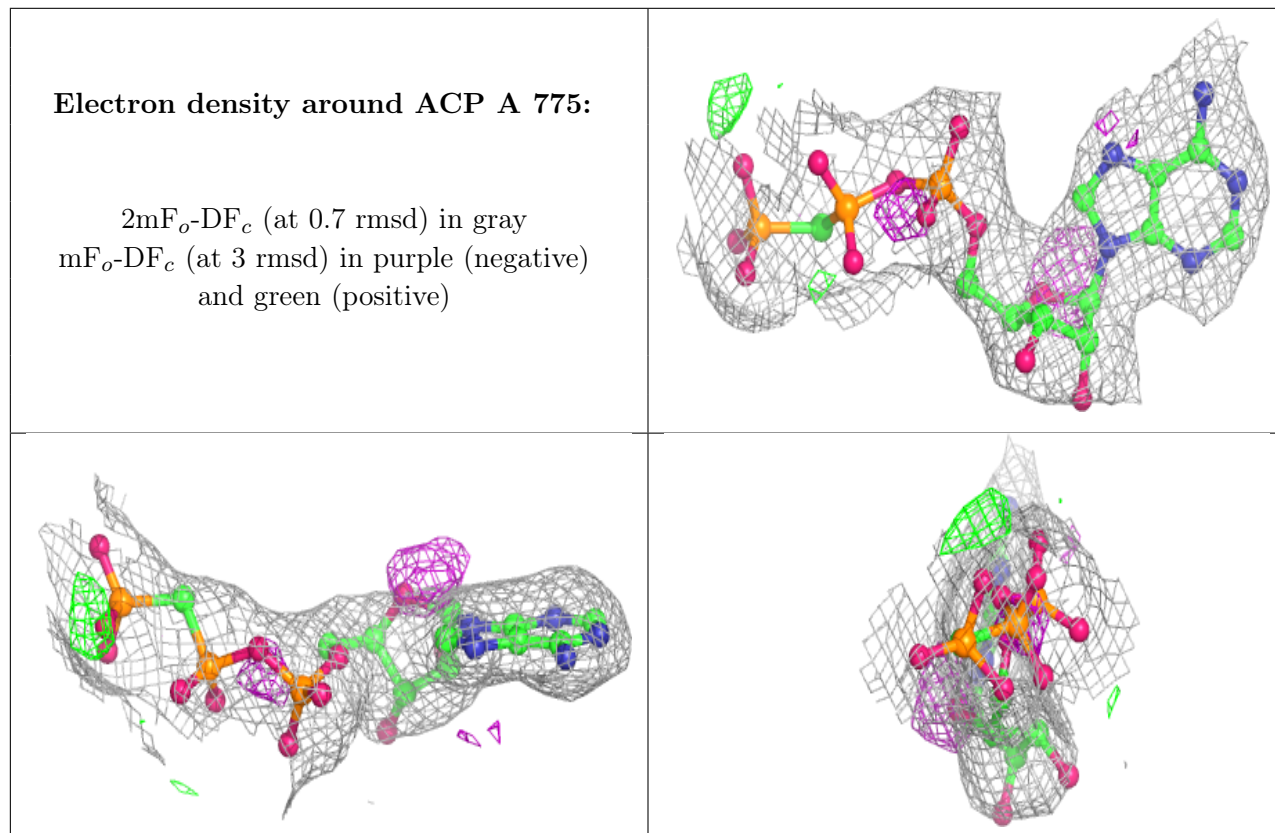
There are no monosaccharides in this entry.

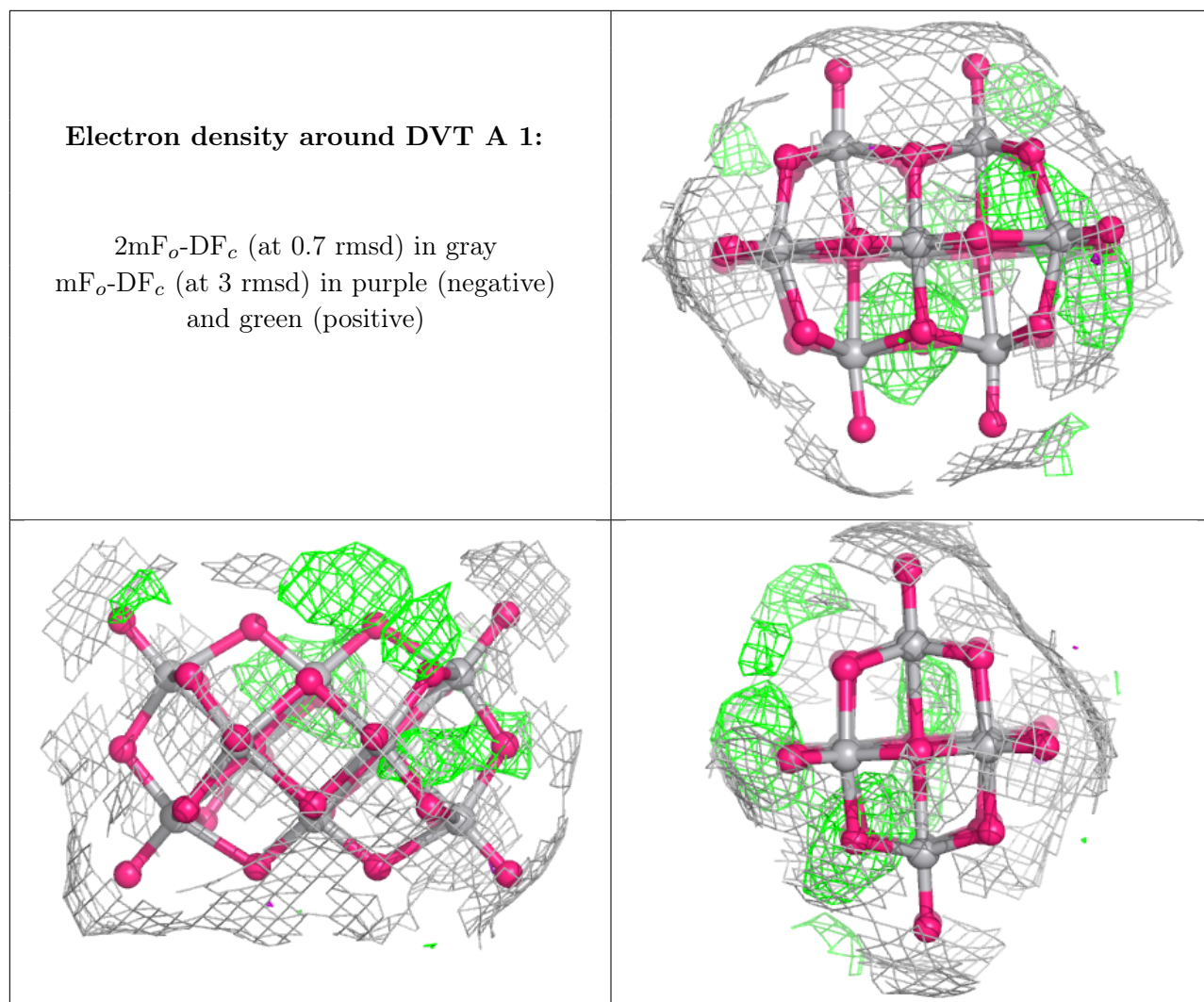
6.4 Ligands [i](#)

In the following table, the Atoms column lists the number of modelled atoms in the group and the number defined in the chemical component dictionary. The B-factors column lists the minimum, median, 95th percentile and maximum values of B factors of atoms in the group. The column labelled 'Q< 0.9' lists the number of atoms with occupancy less than 0.9.

Mol	Type	Chain	Res	Atoms	RSCC	RSR	B-factors(Å ²)	Q<0.9
5	MG	A	776	1/1	0.68	0.25	74,74,74,74	0
4	ACP	A	775	31/31	0.89	0.14	70,85,95,95	0
3	DVT	A	1	38/38	0.97	0.15	81,83,85,85	0

The following is a graphical depiction of the model fit to experimental electron density of all instances of the Ligand of Interest. In addition, ligands with molecular weight > 250 and outliers as shown on the geometry validation Tables will also be included. Each fit is shown from different orientation to approximate a three-dimensional view.





6.5 Other polymers [i](#)

There are no such residues in this entry.