



# Full wwPDB X-ray Structure Validation Report ⓘ

Nov 6, 2023 – 12:34 PM EST

PDB ID : 1GJ5  
Title : SELECTIVITY AT S1, H2O DISPLACEMENT, UPA, TPA, SER190/ALA190 PROTEASE, STRUCTURE-BASED DRUG DESIGN  
Authors : Katz, B.A.; Sprengeler, P.A.; Luong, C.; Verner, E.; Spencer, J.R.; Breitenbucher, J.G.; Hui, H.; McGee, D.; Allen, D.; Martelli, A.; Mackman, R.L.  
Deposited on : 2001-04-27  
Resolution : 1.73 Å(reported)

This is a Full wwPDB X-ray Structure Validation Report for a publicly released PDB entry.

We welcome your comments at [validation@mail.wwpdb.org](mailto:validation@mail.wwpdb.org)

A user guide is available at

<https://www.wwpdb.org/validation/2017/XrayValidationReportHelp>

with specific help available everywhere you see the ⓘ symbol.

The types of validation reports are described at

<http://www.wwpdb.org/validation/2017/FAQs#types>.

---

The following versions of software and data (see [references ⓘ](#)) were used in the production of this report:

MolProbity : 4.02b-467  
Mogul : 1.8.5 (274361), CSD as541be (2020)  
Xtriage (Phenix) : 1.13  
EDS : 2.36  
buster-report : 1.1.7 (2018)  
Percentile statistics : 20191225.v01 (using entries in the PDB archive December 25th 2019)  
Refmac : 5.8.0158  
CCP4 : 7.0.044 (Gargrove)  
Ideal geometry (proteins) : Engh & Huber (2001)  
Ideal geometry (DNA, RNA) : Parkinson et al. (1996)  
Validation Pipeline (wwPDB-VP) : 2.36

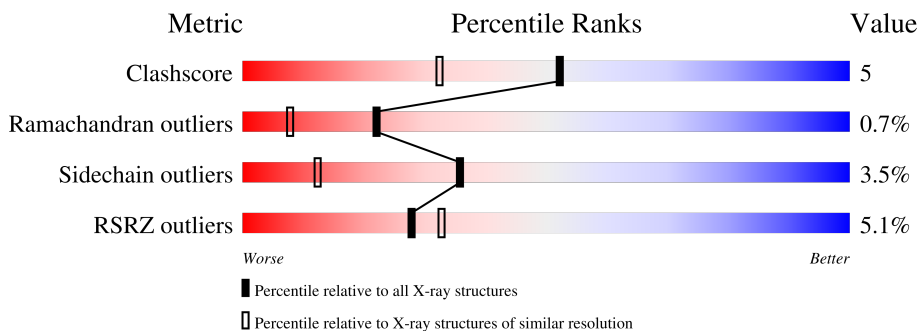
# 1 Overall quality at a glance

The following experimental techniques were used to determine the structure:

*X-RAY DIFFRACTION*

The reported resolution of this entry is 1.73 Å.

Percentile scores (ranging between 0-100) for global validation metrics of the entry are shown in the following graphic. The table shows the number of entries on which the scores are based.



Metric	Whole archive (#Entries)	Similar resolution (#Entries, resolution range(Å))
Clashscore	141614	3923 (1.76-1.72)
Ramachandran outliers	138981	3878 (1.76-1.72)
Sidechain outliers	138945	3878 (1.76-1.72)
RSRZ outliers	127900	3705 (1.76-1.72)

The table below summarises the geometric issues observed across the polymeric chains and their fit to the electron density. The red, orange, yellow and green segments of the lower bar indicate the fraction of residues that contain outliers for  $\geq 3$ , 2, 1 and 0 types of geometric quality criteria respectively. A grey segment represents the fraction of residues that are not modelled. The numeric value for each fraction is indicated below the corresponding segment, with a dot representing fractions  $\leq 5\%$ . The upper red bar (where present) indicates the fraction of residues that have poor fit to the electron density. The numeric value is given above the bar.

Mol	Chain	Length	Quality of chain
1	L	36	
2	H	258	
3	I	11	

## 2 Entry composition [i](#)

There are 6 unique types of molecules in this entry. The entry contains 5864 atoms, of which 3076 are hydrogens and 0 are deuteriums.

In the tables below, the ZeroOcc column contains the number of atoms modelled with zero occupancy, the AltConf column contains the number of residues with at least one atom in alternate conformation and the Trace column contains the number of residues modelled with at most 2 atoms.

- Molecule 1 is a protein called THROMBIN.

Mol	Chain	Residues	Atoms					ZeroOcc	AltConf	Trace	
			Total	C	H	N	O				S
1	L	36	565	177	278	48	61	1	0	0	0

- Molecule 2 is a protein called THROMBIN.

Mol	Chain	Residues	Atoms					ZeroOcc	AltConf	Trace	
			Total	C	H	N	O				S
2	H	250	4058	1300	2024	358	361	15	0	3	0

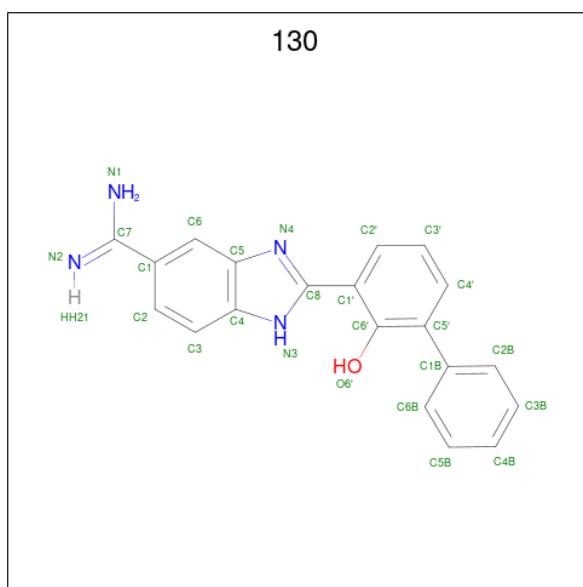
- Molecule 3 is a protein called ACETYL HIRUDIN.

Mol	Chain	Residues	Atoms					ZeroOcc	AltConf	Trace	
			Total	C	H	N	O				S
3	I	11	188	64	84	12	27	1	0	0	0

- Molecule 4 is SODIUM ION (three-letter code: NA) (formula: Na).

Mol	Chain	Residues	Atoms		ZeroOcc	AltConf
4	H	1	Total	Na	0	0
			1	1		

- Molecule 5 is 2-(2-HYDROXY-BIPHENYL)-1H-BENZOIMIDAZOLE-5-CARBOXAMIDINE (three-letter code: 130) (formula: C<sub>20</sub>H<sub>16</sub>N<sub>4</sub>O).



Mol	Chain	Residues	Atoms					ZeroOcc	AltConf
			Total	C	H	N	O		
5	H	1	41	20	16	4	1	0	0

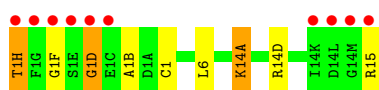
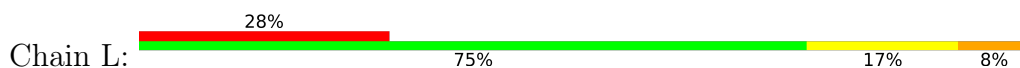
- Molecule 6 is water.

Mol	Chain	Residues	Atoms			ZeroOcc	AltConf
			Total	H	O		
6	L	39	117	78	39	0	0
6	H	287	864	576	288	0	1
6	I	10	30	20	10	0	0

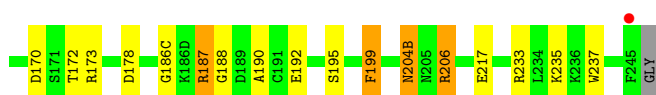
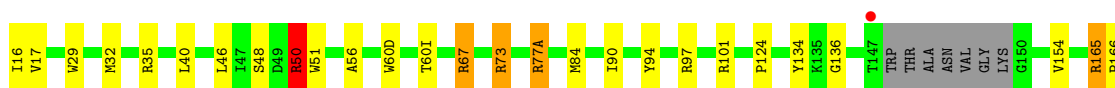
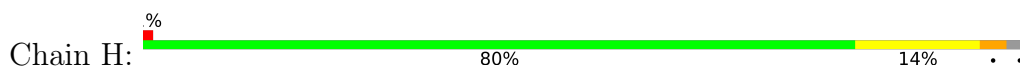
### 3 Residue-property plots [i](#)

These plots are drawn for all protein, RNA, DNA and oligosaccharide chains in the entry. The first graphic for a chain summarises the proportions of the various outlier classes displayed in the second graphic. The second graphic shows the sequence view annotated by issues in geometry and electron density. Residues are color-coded according to the number of geometric quality criteria for which they contain at least one outlier: green = 0, yellow = 1, orange = 2 and red = 3 or more. A red dot above a residue indicates a poor fit to the electron density ( $RSRZ > 2$ ). Stretches of 2 or more consecutive residues without any outlier are shown as a green connector. Residues present in the sample, but not in the model, are shown in grey.

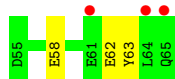
- Molecule 1: THROMBIN



- Molecule 2: THROMBIN



- Molecule 3: ACETYL HIRUDIN



## 4 Data and refinement statistics

Property	Value	Source
Space group	C 1 2 1	Depositor
Cell constants a, b, c, $\alpha$ , $\beta$ , $\gamma$	71.33Å 71.96Å 72.96Å 90.00° 101.05° 90.00°	Depositor
Resolution (Å)	7.00 – 1.73 35.98 – 1.42	Depositor EDS
% Data completeness (in resolution range)	69.8 (7.00-1.73) 45.1 (35.98-1.42)	Depositor EDS
$R_{merge}$	0.06	Depositor
$R_{sym}$	(Not available)	Depositor
$\langle I/\sigma(I) \rangle$ <sup>1</sup>	1.45 (at 1.42Å)	Xtrriage
Refinement program	X-PLOR 3.851	Depositor
R, $R_{free}$	0.193 , 0.233 0.201 , (Not available)	Depositor DCC
$R_{free}$ test set	No test flags present.	wwPDB-VP
Wilson B-factor (Å <sup>2</sup> )	11.1	Xtrriage
Anisotropy	0.220	Xtrriage
Bulk solvent $k_{sol}$ (e/Å <sup>3</sup> ), $B_{sol}$ (Å <sup>2</sup> )	0.27 , 45.6	EDS
L-test for twinning <sup>2</sup>	$\langle  L  \rangle = 0.49$ , $\langle L^2 \rangle = 0.32$	Xtrriage
Estimated twinning fraction	No twinning to report.	Xtrriage
$F_o, F_c$ correlation	0.94	EDS
Total number of atoms	5864	wwPDB-VP
Average B, all atoms (Å <sup>2</sup> )	30.0	wwPDB-VP

Xtrriage's analysis on translational NCS is as follows: *The largest off-origin peak in the Patterson function is 6.50% of the height of the origin peak. No significant pseudotranslation is detected.*

<sup>1</sup>Intensities estimated from amplitudes.

<sup>2</sup>Theoretical values of  $\langle |L| \rangle$ ,  $\langle L^2 \rangle$  for acentric reflections are 0.5, 0.333 respectively for untwinned datasets, and 0.375, 0.2 for perfectly twinned datasets.

## 5 Model quality i

### 5.1 Standard geometry i

Bond lengths and bond angles in the following residue types are not validated in this section: NA, TYS, 130

The Z score for a bond length (or angle) is the number of standard deviations the observed value is removed from the expected value. A bond length (or angle) with  $|Z| > 5$  is considered an outlier worth inspection. RMSZ is the root-mean-square of all Z scores of the bond lengths (or angles).

Mol	Chain	Bond lengths		Bond angles	
		RMSZ	# Z  >5	RMSZ	# Z  >5
1	L	1.48	0/290	1.45	2/384 (0.5%)
2	H	1.38	4/2101 (0.2%)	1.50	20/2838 (0.7%)
3	I	1.61	0/88	1.41	0/115
All	All	1.40	4/2479 (0.2%)	1.49	22/3337 (0.7%)

Chiral center outliers are detected by calculating the chiral volume of a chiral center and verifying if the center is modelled as a planar moiety or with the opposite hand. A planarity outlier is detected by checking planarity of atoms in a peptide group, atoms in a mainchain group or atoms of a sidechain that are expected to be planar.

Mol	Chain	#Chirality outliers	#Planarity outliers
1	L	0	1
2	H	0	8
All	All	0	9

All (4) bond length outliers are listed below:

Mol	Chain	Res	Type	Atoms	Z	Observed(Å)	Ideal(Å)
2	H	166[A]	PRO	N-CD	7.72	1.58	1.47
2	H	166[B]	PRO	N-CD	7.72	1.58	1.47
2	H	217	GLU	CG-CD	6.01	1.60	1.51
2	H	60(D)	TRP	CG-CD2	-5.08	1.35	1.43

All (22) bond angle outliers are listed below:

Mol	Chain	Res	Type	Atoms	Z	Observed(°)	Ideal(°)
2	H	77(A)	ARG	NE-CZ-NH2	-9.77	115.42	120.30
2	H	233	ARG	NE-CZ-NH2	-8.47	116.07	120.30
2	H	206	ARG	NE-CZ-NH2	-7.79	116.40	120.30
2	H	233	ARG	NE-CZ-NH1	7.44	124.02	120.30

*Continued on next page...*

Continued from previous page...

Mol	Chain	Res	Type	Atoms	Z	Observed(°)	Ideal(°)
2	H	73	ARG	NE-CZ-NH2	-7.12	116.74	120.30
2	H	97	ARG	NE-CZ-NH2	-6.94	116.83	120.30
2	H	35	ARG	NE-CZ-NH2	-6.71	116.94	120.30
2	H	199	PHE	N-CA-C	-6.61	93.17	111.00
2	H	134	TYR	CB-CG-CD2	-6.34	117.19	121.00
2	H	187	ARG	NE-CZ-NH1	-6.32	117.14	120.30
2	H	51	TRP	NE1-CE2-CZ2	5.85	136.84	130.40
1	L	14(D)	ARG	NE-CZ-NH1	-5.82	117.39	120.30
2	H	60(D)	TRP	NE1-CE2-CZ2	5.65	136.62	130.40
1	L	1(D)	GLY	N-CA-C	5.38	126.56	113.10
2	H	154	VAL	N-CA-CB	-5.34	99.76	111.50
2	H	50	ARG	NE-CZ-NH2	-5.30	117.65	120.30
2	H	67	ARG	NE-CZ-NH2	-5.30	117.65	120.30
2	H	178	ASP	CB-CG-OD2	-5.29	113.54	118.30
2	H	170	ASP	CB-CG-OD2	-5.25	113.57	118.30
2	H	165	ARG	NE-CZ-NH2	-5.25	117.67	120.30
2	H	29	TRP	NE1-CE2-CZ2	5.18	136.10	130.40
2	H	237	TRP	CD1-NE1-CE2	5.17	113.65	109.00

There are no chirality outliers.

All (9) planarity outliers are listed below:

Mol	Chain	Res	Type	Group
2	H	101	ARG	Sidechain
2	H	165	ARG	Sidechain
2	H	173	ARG	Sidechain
2	H	187	ARG	Sidechain
2	H	206	ARG	Sidechain
2	H	50	ARG	Sidechain
2	H	67	ARG	Sidechain
2	H	73	ARG	Sidechain
1	L	15	ARG	Sidechain

## 5.2 Too-close contacts [i](#)

In the following table, the Non-H and H(model) columns list the number of non-hydrogen atoms and hydrogen atoms in the chain respectively. The H(added) column lists the number of hydrogen atoms added and optimized by MolProbity. The Clashes column lists the number of clashes within the asymmetric unit, whereas Symm-Clashes lists symmetry-related clashes.



Mol	Chain	Non-H	H(model)	H(added)	Clashes	Symm-Clashes
1	L	287	278	278	7	0
2	H	2034	2024	2014	21	4
3	I	104	84	80	2	0
4	H	1	0	0	0	0
5	H	25	16	15	8	0
6	H	288	576	0	1	11
6	I	10	20	0	0	5
6	L	39	78	0	0	0
All	All	2788	3076	2387	26	16

The all-atom clashscore is defined as the number of clashes found per 1000 atoms (including hydrogen atoms). The all-atom clashscore for this structure is 5.

All (26) close contacts within the same asymmetric unit are listed below, sorted by their clash magnitude.

Atom-1	Atom-2	Interatomic distance (Å)	Clash overlap (Å)
2:H:195:SER:HG	5:H:410:130:HN3	1.22	0.86
2:H:195:SER:OG	5:H:410:130:O6'	1.98	0.80
2:H:195:SER:HG	5:H:410:130:HO6	1.39	0.70
1:L:1(D):GLY:HA3	1:L:1:CYS:SG	2.31	0.69
2:H:195:SER:OG	5:H:410:130:N3	2.24	0.67
1:L:1(F):GLY:HA2	2:H:235:LYS:NZ	2.11	0.66
3:I:58:GLU:H	3:I:58:GLU:CD	2.08	0.56
1:L:1(F):GLY:HA2	2:H:235:LYS:HZ1	1.73	0.53
2:H:204(B):ASN:C	2:H:204(B):ASN:HD22	2.14	0.50
2:H:32:MET:HG3	2:H:40:LEU:HD13	1.95	0.48
1:L:1(H):THR:HG23	2:H:48:SER:HB3	1.97	0.47
2:H:192:GLU:HG3	5:H:410:130:C2'	2.46	0.46
3:I:58:GLU:CD	3:I:58:GLU:N	2.70	0.46
1:L:14(A):LYS:HB2	1:L:14(A):LYS:NZ	2.30	0.45
2:H:17:VAL:O	2:H:188:GLY:HA2	2.15	0.45
2:H:56:ALA:HB1	2:H:90:ILE:HG23	1.98	0.44
2:H:136:GLY:HA3	2:H:199:PHE:CZ	2.53	0.43
1:L:1(F):GLY:CA	2:H:235:LYS:HZ1	2.32	0.43
2:H:192:GLU:CG	5:H:410:130:C2'	2.97	0.42
1:L:1(F):GLY:HA2	2:H:235:LYS:CE	2.49	0.42
2:H:124:PRO:O	2:H:235:LYS:NZ	2.51	0.42
2:H:204(B):ASN:C	2:H:204(B):ASN:ND2	2.74	0.42
2:H:84[A]:MET:HG3	6:H:697:HOH:O	2.21	0.41
5:H:410:130:O6'	5:H:410:130:N3	2.54	0.41
2:H:192:GLU:HG3	5:H:410:130:HC'2	2.03	0.40
2:H:16:ILE:HD13	2:H:190:ALA:HA	2.03	0.40

All (16) symmetry-related close contacts are listed below. The label for Atom-2 includes the symmetry operator and encoded unit-cell translations to be applied.

Atom-1	Atom-2	Interatomic distance (Å)	Clash overlap (Å)
6:I:396:HOH:H1	6:I:396:HOH:H1[2_555]	0.37	1.23
6:I:396:HOH:O	6:I:396:HOH:O[2_555]	1.14	1.06
6:H:413:HOH:H1	6:H:413:HOH:H1[2_555]	0.67	0.93
6:I:396:HOH:O	6:I:396:HOH:H1[2_555]	0.73	0.87
6:H:413:HOH:O	6:H:413:HOH:H1[2_555]	0.94	0.66
6:H:413:HOH:O	6:H:413:HOH:O[2_555]	1.80	0.40
6:H:637:HOH:H1	6:H:637:HOH:H1[2_555]	1.20	0.40
2:H:77(A):ARG:O	6:H:413:HOH:O[2_555]	1.89	0.31
6:H:413:HOH:H1	6:H:413:HOH:H2[2_555]	1.29	0.31
6:I:396:HOH:H1	6:I:397:HOH:H2[2_555]	1.29	0.31
2:H:77(A):ARG:HE	6:H:452:HOH:H2[2_555]	1.33	0.27
6:H:523:HOH:H1	6:H:523:HOH:H1[2_555]	1.35	0.25
6:I:396:HOH:O	6:I:397:HOH:H2[2_555]	1.39	0.21
2:H:172:THR:O	6:H:546:HOH:H1[4_546]	1.48	0.12
2:H:77(A):ARG:O	6:H:413:HOH:H2[2_555]	1.58	0.02
6:H:538:HOH:H2	6:H:685:HOH:O[4_546]	1.58	0.02

### 5.3 Torsion angles [i](#)

#### 5.3.1 Protein backbone [i](#)

In the following table, the Percentiles column shows the percent Ramachandran outliers of the chain as a percentile score with respect to all X-ray entries followed by that with respect to entries of similar resolution.

The Analysed column shows the number of residues for which the backbone conformation was analysed, and the total number of residues.

Mol	Chain	Analysed	Favoured	Allowed	Outliers	Percentiles	
1	L	34/36 (94%)	26 (76%)	7 (21%)	1 (3%)	4	0
2	H	249/258 (96%)	237 (95%)	11 (4%)	1 (0%)	34	17
3	I	8/11 (73%)	6 (75%)	2 (25%)	0	100	100
All	All	291/305 (95%)	269 (92%)	20 (7%)	2 (1%)	22	8

All (2) Ramachandran outliers are listed below:

Mol	Chain	Res	Type
1	L	1(B)	ALA

*Continued on next page...*

*Continued from previous page...*

Mol	Chain	Res	Type
2	H	186(C)	GLY

### 5.3.2 Protein sidechains [i](#)

In the following table, the Percentiles column shows the percent sidechain outliers of the chain as a percentile score with respect to all X-ray entries followed by that with respect to entries of similar resolution.

The Analysed column shows the number of residues for which the sidechain conformation was analysed, and the total number of residues.

Mol	Chain	Analysed	Rotameric	Outliers	Percentiles
1	L	31/31 (100%)	28 (90%)	3 (10%)	8 1
2	H	222/224 (99%)	217 (98%)	5 (2%)	50 27
3	I	10/10 (100%)	9 (90%)	1 (10%)	7 1
All	All	263/265 (99%)	254 (97%)	9 (3%)	36 13

All (9) residues with a non-rotameric sidechain are listed below:

Mol	Chain	Res	Type
1	L	1(H)	THR
1	L	6	LEU
1	L	14(A)	LYS
2	H	46	LEU
2	H	50	ARG
2	H	60(I)	THR
2	H	94	TYR
2	H	204(B)	ASN
3	I	62	GLU

Sometimes sidechains can be flipped to improve hydrogen bonding and reduce clashes. All (3) such sidechains are listed below:

Mol	Chain	Res	Type
2	H	78	ASN
2	H	204(B)	ASN
3	I	65	GLN

### 5.3.3 RNA [i](#)

There are no RNA molecules in this entry.

## 5.4 Non-standard residues in protein, DNA, RNA chains [i](#)

1 non-standard protein/DNA/RNA residue is modelled in this entry.

In the following table, the Counts columns list the number of bonds (or angles) for which Mogul statistics could be retrieved, the number of bonds (or angles) that are observed in the model and the number of bonds (or angles) that are defined in the Chemical Component Dictionary. The Link column lists molecule types, if any, to which the group is linked. The Z score for a bond length (or angle) is the number of standard deviations the observed value is removed from the expected value. A bond length (or angle) with  $|Z| > 2$  is considered an outlier worth inspection. RMSZ is the root-mean-square of all Z scores of the bond lengths (or angles).

Mol	Type	Chain	Res	Link	Bond lengths			Bond angles		
					Counts	RMSZ	# Z  > 2	Counts	RMSZ	# Z  > 2
3	TYS	I	63	3	15,16,17	1.00	1 (6%)	18,22,24	1.29	2 (11%)

In the following table, the Chirals column lists the number of chiral outliers, the number of chiral centers analysed, the number of these observed in the model and the number defined in the Chemical Component Dictionary. Similar counts are reported in the Torsion and Rings columns. '-' means no outliers of that kind were identified.

Mol	Type	Chain	Res	Link	Chirals	Torsions	Rings
3	TYS	I	63	3	-	1/10/11/13	0/1/1/1

All (1) bond length outliers are listed below:

Mol	Chain	Res	Type	Atoms	Z	Observed(Å)	Ideal(Å)
3	I	63	TYS	OH-CZ	-2.59	1.38	1.42

All (2) bond angle outliers are listed below:

Mol	Chain	Res	Type	Atoms	Z	Observed(°)	Ideal(°)
3	I	63	TYS	O2-S-O1	-3.38	98.66	112.22
3	I	63	TYS	OH-S-O2	2.49	114.98	107.71

There are no chirality outliers.

All (1) torsion outliers are listed below:

Mol	Chain	Res	Type	Atoms
3	I	63	TYS	O-C-CA-CB

There are no ring outliers.

No monomer is involved in short contacts.

## 5.5 Carbohydrates [i](#)

There are no monosaccharides in this entry.

## 5.6 Ligand geometry [i](#)

Of 2 ligands modelled in this entry, 1 is monoatomic - leaving 1 for Mogul analysis.

In the following table, the Counts columns list the number of bonds (or angles) for which Mogul statistics could be retrieved, the number of bonds (or angles) that are observed in the model and the number of bonds (or angles) that are defined in the Chemical Component Dictionary. The Link column lists molecule types, if any, to which the group is linked. The Z score for a bond length (or angle) is the number of standard deviations the observed value is removed from the expected value. A bond length (or angle) with  $|Z| > 2$  is considered an outlier worth inspection. RMSZ is the root-mean-square of all Z scores of the bond lengths (or angles).

Mol	Type	Chain	Res	Link	Bond lengths			Bond angles		
					Counts	RMSZ	# $ Z  > 2$	Counts	RMSZ	# $ Z  > 2$
5	130	H	410	-	26,28,28	1.67	6 (23%)	22,40,40	0.91	1 (4%)

In the following table, the Chirals column lists the number of chiral outliers, the number of chiral centers analysed, the number of these observed in the model and the number defined in the Chemical Component Dictionary. Similar counts are reported in the Torsion and Rings columns. '-' means no outliers of that kind were identified.

Mol	Type	Chain	Res	Link	Chirals	Torsions	Rings
5	130	H	410	-	-	0/4/12/12	0/4/4/4

All (6) bond length outliers are listed below:

Mol	Chain	Res	Type	Atoms	Z	Observed(Å)	Ideal(Å)
5	H	410	130	C1-C7	-4.81	1.38	1.47
5	H	410	130	C4-N3	-2.94	1.29	1.38
5	H	410	130	C8-N3	-2.30	1.30	1.34
5	H	410	130	C3-C4	-2.30	1.37	1.41
5	H	410	130	C5-N4	-2.24	1.31	1.38

*Continued on next page...*

*Continued from previous page...*

Mol	Chain	Res	Type	Atoms	Z	Observed(Å)	Ideal(Å)
5	H	410	130	C5-C4	-2.05	1.35	1.42

All (1) bond angle outliers are listed below:

Mol	Chain	Res	Type	Atoms	Z	Observed(°)	Ideal(°)
5	H	410	130	C2-C3-C4	-2.34	117.90	120.84

There are no chirality outliers.

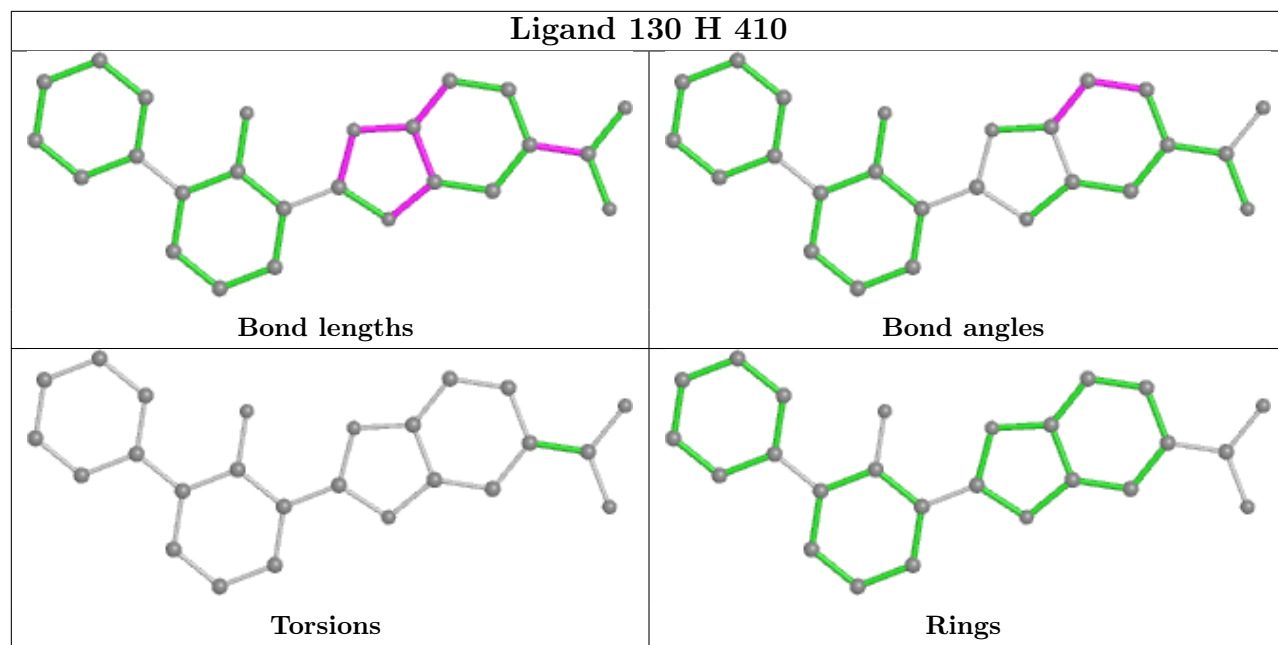
There are no torsion outliers.

There are no ring outliers.

1 monomer is involved in 8 short contacts:

Mol	Chain	Res	Type	Clashes	Symm-Clashes
5	H	410	130	8	0

The following is a two-dimensional graphical depiction of Mogul quality analysis of bond lengths, bond angles, torsion angles, and ring geometry for all instances of the Ligand of Interest. In addition, ligands with molecular weight > 250 and outliers as shown on the validation Tables will also be included. For torsion angles, if less than 5% of the Mogul distribution of torsion angles is within 10 degrees of the torsion angle in question, then that torsion angle is considered an outlier. Any bond that is central to one or more torsion angles identified as an outlier by Mogul will be highlighted in the graph. For rings, the root-mean-square deviation (RMSD) between the ring in question and similar rings identified by Mogul is calculated over all ring torsion angles. If the average RMSD is greater than 60 degrees and the minimal RMSD between the ring in question and any Mogul-identified rings is also greater than 60 degrees, then that ring is considered an outlier. The outliers are highlighted in purple. The color gray indicates Mogul did not find sufficient equivalents in the CSD to analyse the geometry.



## 5.7 Other polymers [i](#)

There are no such residues in this entry.

## 5.8 Polymer linkage issues [i](#)

There are no chain breaks in this entry.

## 6 Fit of model and data [i](#)

### 6.1 Protein, DNA and RNA chains [i](#)

In the following table, the column labelled ‘#RSRZ > 2’ contains the number (and percentage) of RSRZ outliers, followed by percent RSRZ outliers for the chain as percentile scores relative to all X-ray entries and entries of similar resolution. The OWAB column contains the minimum, median, 95<sup>th</sup> percentile and maximum values of the occupancy-weighted average B-factor per residue. The column labelled ‘Q < 0.9’ lists the number of (and percentage) of residues with an average occupancy less than 0.9.

Mol	Chain	Analysed	<RSRZ>	#RSRZ>2	OWAB(Å <sup>2</sup> )	Q<0.9
1	L	36/36 (100%)	2.68	10 (27%) 0 0	11, 28, 61, 78	12 (33%)
2	H	250/258 (96%)	-0.18	2 (0%) 86 90	9, 23, 43, 52	22 (8%)
3	I	10/11 (90%)	1.49	3 (30%) 0 0	35, 40, 51, 51	5 (50%)
All	All	296/305 (97%)	0.23	15 (5%) 28 33	9, 24, 49, 78	39 (13%)

All (15) RSRZ outliers are listed below:

Mol	Chain	Res	Type	RSRZ
1	L	1(H)	THR	19.8
1	L	15	ARG	15.5
1	L	14(M)	GLY	15.0
1	L	1(G)	PHE	13.0
1	L	1(F)	GLY	12.0
1	L	14(L)	ASP	10.2
1	L	1(D)	GLY	9.4
1	L	1(E)	SER	7.1
1	L	14(K)	ILE	5.3
2	H	147	THR	5.2
1	L	1(C)	GLU	4.3
3	I	65	GLN	4.0
3	I	64	LEU	3.8
2	H	245	PHE	3.5
3	I	61	GLU	2.7

### 6.2 Non-standard residues in protein, DNA, RNA chains [i](#)

In the following table, the Atoms column lists the number of modelled atoms in the group and the number defined in the chemical component dictionary. The B-factors column lists the minimum, median, 95<sup>th</sup> percentile and maximum values of B factors of atoms in the group. The column labelled ‘Q < 0.9’ lists the number of atoms with occupancy less than 0.9.



Mol	Type	Chain	Res	Atoms	RSCC	RSR	B-factors( $\text{\AA}^2$ )	Q<0.9
3	TYS	I	63	16/17	0.94	0.10	31,33,44,46	0

### 6.3 Carbohydrates [i](#)

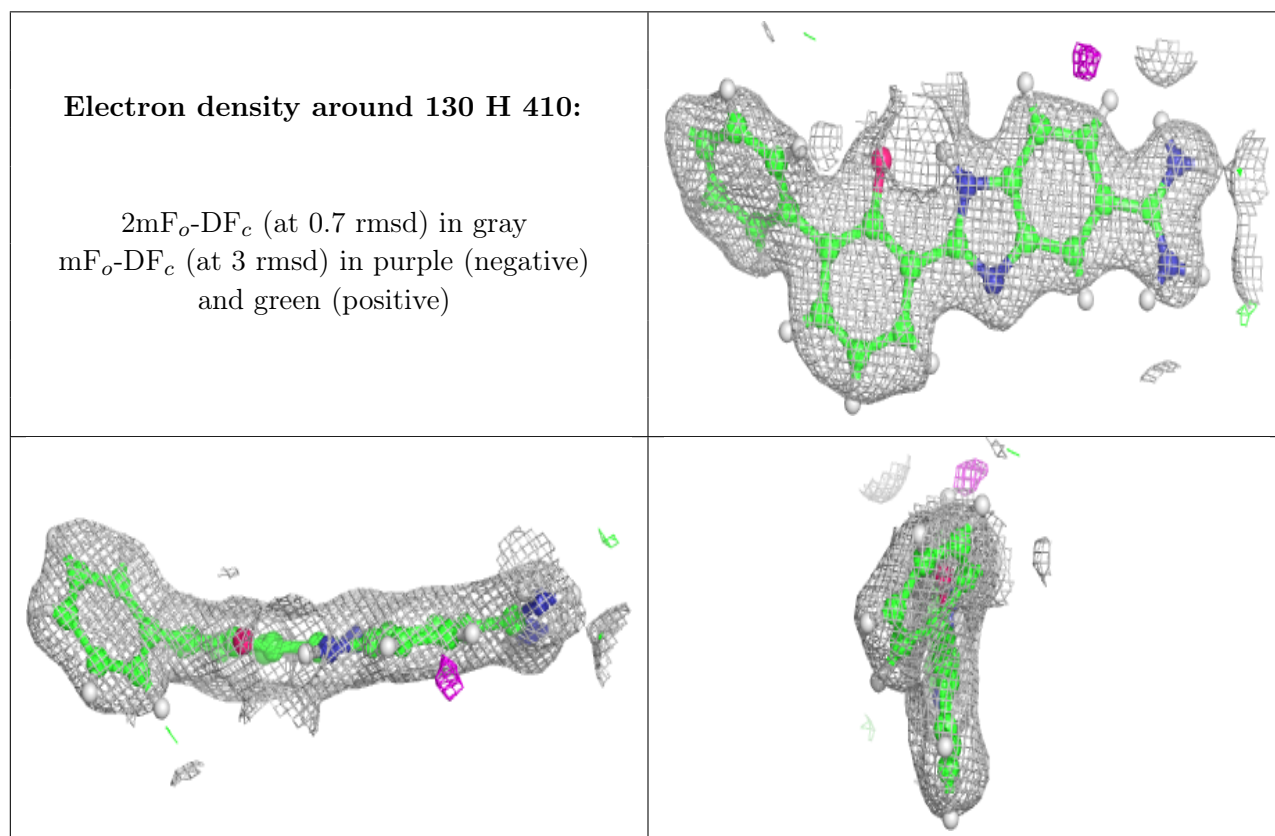
There are no monosaccharides in this entry.

### 6.4 Ligands [i](#)

In the following table, the Atoms column lists the number of modelled atoms in the group and the number defined in the chemical component dictionary. The B-factors column lists the minimum, median, 95<sup>th</sup> percentile and maximum values of B factors of atoms in the group. The column labelled 'Q< 0.9' lists the number of atoms with occupancy less than 0.9.

Mol	Type	Chain	Res	Atoms	RSCC	RSR	B-factors( $\text{\AA}^2$ )	Q<0.9
4	NA	H	409	1/1	0.92	0.08	35,35,35,35	0
5	130	H	410	25/25	0.95	0.06	16,24,28,30	0

The following is a graphical depiction of the model fit to experimental electron density of all instances of the Ligand of Interest. In addition, ligands with molecular weight > 250 and outliers as shown on the geometry validation Tables will also be included. Each fit is shown from different orientation to approximate a three-dimensional view.



## 6.5 Other polymers [i](#)

There are no such residues in this entry.