



Full wwPDB X-ray Structure Validation Report ⓘ

Oct 11, 2021 – 03:27 PM EDT

PDB ID : 2GIX
Title : Cytoplasmic Domain Structure of Kir2.1 containing Andersen's Mutation R218Q and Rescue Mutation T309K
Authors : Pegan, S.; Arrabit, C.; Slesinger, P.A.; Choe, S.
Deposited on : 2006-03-29
Resolution : 2.02 Å(reported)

This is a Full wwPDB X-ray Structure Validation Report for a publicly released PDB entry.

We welcome your comments at validation@mail.wwpdb.org

A user guide is available at

<https://www.wwpdb.org/validation/2017/XrayValidationReportHelp>

with specific help available everywhere you see the ⓘ symbol.

The following versions of software and data (see [references ⓘ](#)) were used in the production of this report:

MolProbity : 4.02b-467
Mogul : 1.8.5 (274361), CSD as541be (2020)
Xtriage (Phenix) : 1.13
EDS : 2.23.2
Percentile statistics : 20191225.v01 (using entries in the PDB archive December 25th 2019)
Refmac : 5.8.0158
CCP4 : 7.0.044 (Gargrove)
Ideal geometry (proteins) : Engh & Huber (2001)
Ideal geometry (DNA, RNA) : Parkinson et al. (1996)
Validation Pipeline (wwPDB-VP) : 2.23.2

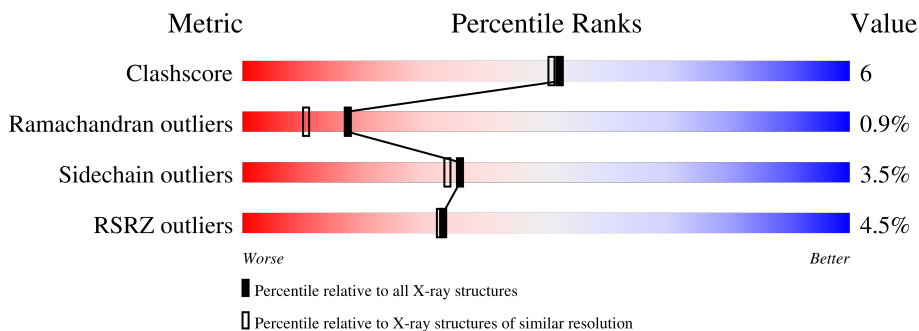
1 Overall quality at a glance

The following experimental techniques were used to determine the structure:

X-RAY DIFFRACTION

The reported resolution of this entry is 2.02 Å.

Percentile scores (ranging between 0-100) for global validation metrics of the entry are shown in the following graphic. The table shows the number of entries on which the scores are based.



Metric	Whole archive (#Entries)	Similar resolution (#Entries, resolution range(Å))
Clashscore	141614	11643 (2.04-2.00)
Ramachandran outliers	138981	11493 (2.04-2.00)
Sidechain outliers	138945	11492 (2.04-2.00)
RSRZ outliers	127900	10220 (2.04-2.00)

The table below summarises the geometric issues observed across the polymeric chains and their fit to the electron density. The red, orange, yellow and green segments of the lower bar indicate the fraction of residues that contain outliers for ≥ 3 , 2, 1 and 0 types of geometric quality criteria respectively. A grey segment represents the fraction of residues that are not modelled. The numeric value for each fraction is indicated below the corresponding segment, with a dot representing fractions $\leq 5\%$. The upper red bar (where present) indicates the fraction of residues that have poor fit to the electron density. The numeric value is given above the bar.

Mol	Chain	Length	Quality of chain
1	A	208	 5% 81% 14% ..
1	B	208	 5% 82% 13% ..
1	C	208	 4% 86% 11% ..
1	D	208	 4% 88% 10% ..

2 Entry composition

There are 4 unique types of molecules in this entry. The entry contains 7303 atoms, of which 0 are hydrogens and 0 are deuteriums.

In the tables below, the ZeroOcc column contains the number of atoms modelled with zero occupancy, the AltConf column contains the number of residues with at least one atom in alternate conformation and the Trace column contains the number of residues modelled with at most 2 atoms.

- Molecule 1 is a protein called Inward rectifier potassium channel 2.

Mol	Chain	Residues	Atoms					ZeroOcc	AltConf	Trace
			Total	C	N	O	S			
1	A	206	Total 1654	C 1050	N 286	O 310	S 8	0	0	0
1	B	201	Total 1612	C 1022	N 280	O 302	S 8	0	0	0
1	C	206	Total 1654	C 1050	N 286	O 310	S 8	0	0	0
1	D	205	Total 1650	C 1049	N 285	O 308	S 8	0	0	0

There are 24 discrepancies between the modelled and reference sequences:

Chain	Residue	Modelled	Actual	Comment	Reference
A	218	GLN	ARG	engineered mutation	UNP P35561
A	309	LYS	THR	engineered mutation	UNP P35561
B	218	GLN	ARG	engineered mutation	UNP P35561
B	309	LYS	THR	engineered mutation	UNP P35561
C	218	GLN	ARG	engineered mutation	UNP P35561
C	309	LYS	THR	engineered mutation	UNP P35561
D	218	GLN	ARG	engineered mutation	UNP P35561
D	309	LYS	THR	engineered mutation	UNP P35561
A	40	GLY	-	cloning artifact	UNP P35561
A	41	SER	-	cloning artifact	UNP P35561
A	42	HIS	-	cloning artifact	UNP P35561
A	43	GLY	-	cloning artifact	UNP P35561
B	40	GLY	-	cloning artifact	UNP P35561
B	41	SER	-	cloning artifact	UNP P35561
B	42	HIS	-	cloning artifact	UNP P35561
B	43	GLY	-	cloning artifact	UNP P35561
C	40	GLY	-	cloning artifact	UNP P35561
C	41	SER	-	cloning artifact	UNP P35561
C	42	HIS	-	cloning artifact	UNP P35561
C	43	GLY	-	cloning artifact	UNP P35561
D	40	GLY	-	cloning artifact	UNP P35561

Continued on next page...

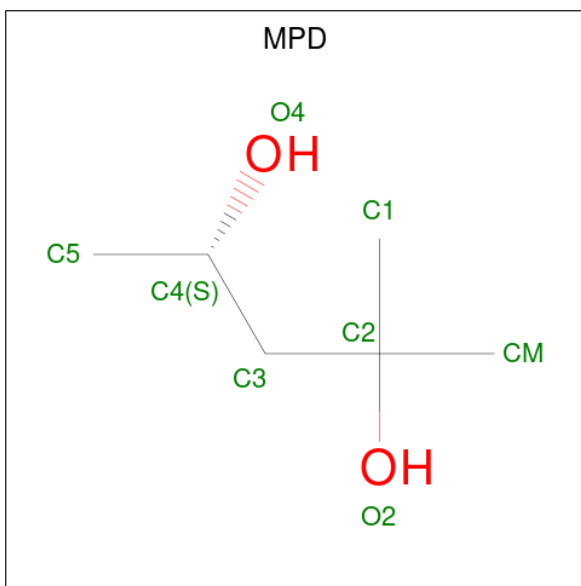
Continued from previous page...

Chain	Residue	Modelled	Actual	Comment	Reference
D	41	SER	-	cloning artifact	UNP P35561
D	42	HIS	-	cloning artifact	UNP P35561
D	43	GLY	-	cloning artifact	UNP P35561

- Molecule 2 is POTASSIUM ION (three-letter code: K) (formula: K).

Mol	Chain	Residues	Atoms	ZeroOcc	AltConf
2	A	1	Total K 1 1	0	0

- Molecule 3 is (4S)-2-METHYL-2,4-PENTANEDIOL (three-letter code: MPD) (formula: C₆H₁₄O₂).



Mol	Chain	Residues	Atoms	ZeroOcc	AltConf
3	A	1	Total C O 8 6 2	0	0
3	B	1	Total C O 8 6 2	0	0
3	C	1	Total C O 8 6 2	0	0
3	D	1	Total C O 8 6 2	0	0

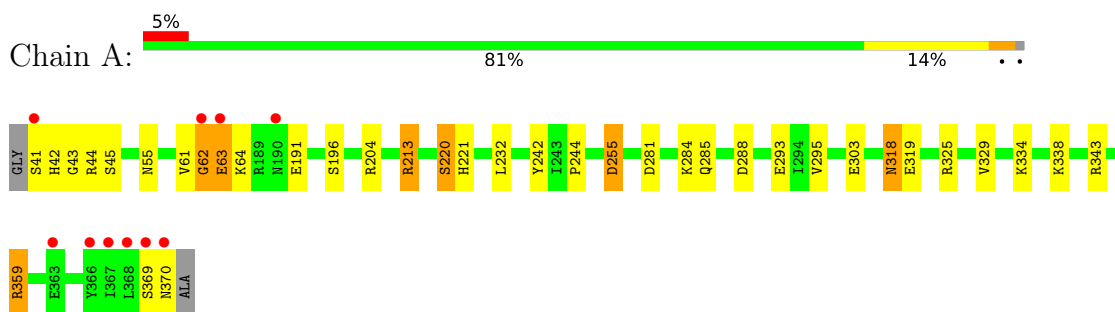
- Molecule 4 is water.

Mol	Chain	Residues	Atoms		ZeroOcc	AltConf
4	A	192	Total 192	O 192	0	0
4	B	169	Total 169	O 169	0	0
4	C	164	Total 164	O 164	0	0
4	D	175	Total 175	O 175	0	0

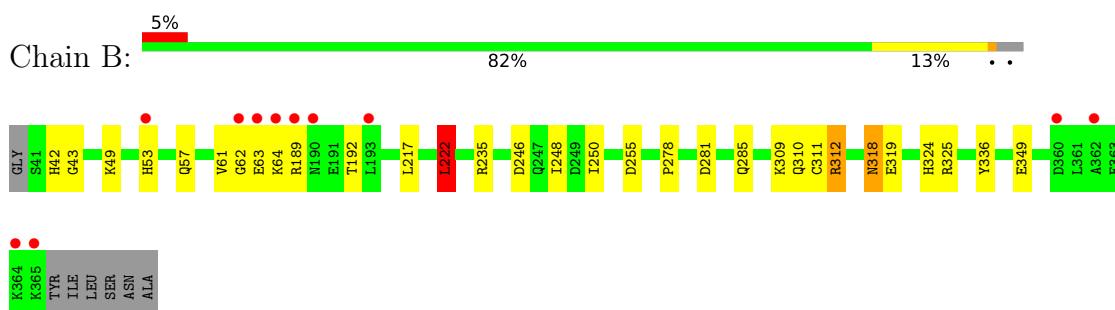
3 Residue-property plots [i](#)

These plots are drawn for all protein, RNA, DNA and oligosaccharide chains in the entry. The first graphic for a chain summarises the proportions of the various outlier classes displayed in the second graphic. The second graphic shows the sequence view annotated by issues in geometry and electron density. Residues are color-coded according to the number of geometric quality criteria for which they contain at least one outlier: green = 0, yellow = 1, orange = 2 and red = 3 or more. A red dot above a residue indicates a poor fit to the electron density ($RSRZ > 2$). Stretches of 2 or more consecutive residues without any outlier are shown as a green connector. Residues present in the sample, but not in the model, are shown in grey.

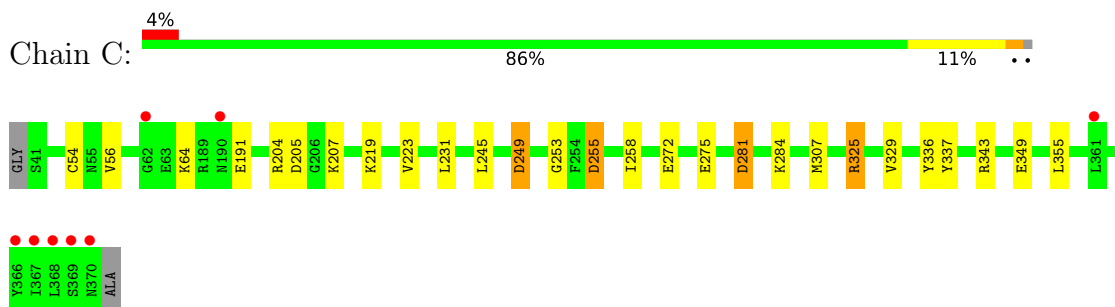
- Molecule 1: Inward rectifier potassium channel 2



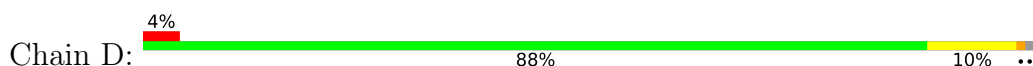
- Molecule 1: Inward rectifier potassium channel 2

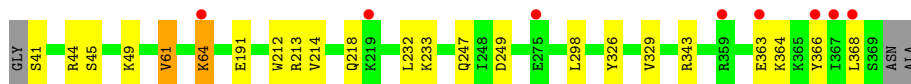


- Molecule 1: Inward rectifier potassium channel 2



- Molecule 1: Inward rectifier potassium channel 2





4 Data and refinement statistics

Property	Value	Source
Space group	C 1 2 1	Depositor
Cell constants a, b, c, α , β , γ	140.67Å 98.88Å 98.09Å 90.00° 130.68° 90.00°	Depositor
Resolution (Å)	(Not available) – 2.02 48.96 – 2.02	Depositor EDS
% Data completeness (in resolution range)	99.5 ((Not available)-2.02) 99.5 (48.96-2.02)	Depositor EDS
R_{merge}	0.09	Depositor
R_{sym}	(Not available)	Depositor
$\langle I/\sigma(I) \rangle$ ¹	2.62 (at 2.03Å)	Xtrriage
Refinement program	REFMAC 5.2.0005	Depositor
R, R_{free}	0.177 , 0.229 0.179 , (Not available)	Depositor DCC
R_{free} test set	3363 reflections (5.09%)	wwPDB-VP
Wilson B-factor (Å ²)	24.6	Xtrriage
Anisotropy	0.222	Xtrriage
Bulk solvent k_{sol} (e/Å ³), B_{sol} (Å ²)	0.34 , 51.9	EDS
L-test for twinning ²	$\langle L \rangle = 0.49$, $\langle L^2 \rangle = 0.33$	Xtrriage
Estimated twinning fraction	No twinning to report.	Xtrriage
F_o, F_c correlation	0.96	EDS
Total number of atoms	7303	wwPDB-VP
Average B, all atoms (Å ²)	27.0	wwPDB-VP

Xtrriage's analysis on translational NCS is as follows: *The largest off-origin peak in the Patterson function is 5.19% of the height of the origin peak. No significant pseudotranslation is detected.*

¹Intensities estimated from amplitudes.

²Theoretical values of $\langle |L| \rangle$, $\langle L^2 \rangle$ for acentric reflections are 0.5, 0.333 respectively for untwinned datasets, and 0.375, 0.2 for perfectly twinned datasets.

5 Model quality [i](#)

5.1 Standard geometry [i](#)

Bond lengths and bond angles in the following residue types are not validated in this section: K, MPD

The Z score for a bond length (or angle) is the number of standard deviations the observed value is removed from the expected value. A bond length (or angle) with $|Z| > 5$ is considered an outlier worth inspection. RMSZ is the root-mean-square of all Z scores of the bond lengths (or angles).

Mol	Chain	Bond lengths		Bond angles	
		RMSZ	# Z >5	RMSZ	# Z >5
1	A	0.83	0/1689	0.89	4/2285 (0.2%)
1	B	0.86	0/1646	0.82	2/2226 (0.1%)
1	C	0.83	1/1689 (0.1%)	0.88	4/2285 (0.2%)
1	D	0.83	0/1685	0.82	1/2278 (0.0%)
All	All	0.84	1/6709 (0.0%)	0.86	11/9074 (0.1%)

All (1) bond length outliers are listed below:

Mol	Chain	Res	Type	Atoms	Z	Observed(Å)	Ideal(Å)
1	C	255	ASP	CB-CG	5.44	1.63	1.51

All (11) bond angle outliers are listed below:

Mol	Chain	Res	Type	Atoms	Z	Observed(°)	Ideal(°)
1	A	204	ARG	NE-CZ-NH1	-8.79	115.91	120.30
1	C	325	ARG	NE-CZ-NH1	7.04	123.82	120.30
1	A	325	ARG	NE-CZ-NH1	6.99	123.79	120.30
1	C	255	ASP	CB-CG-OD1	6.95	124.56	118.30
1	C	249	ASP	CB-CG-OD1	6.34	124.01	118.30
1	C	249	ASP	CB-CG-OD2	-6.18	112.73	118.30
1	B	325	ARG	NE-CZ-NH1	5.67	123.13	120.30
1	A	213	ARG	NE-CZ-NH2	-5.31	117.65	120.30
1	A	255	ASP	CB-CG-OD1	5.19	122.97	118.30
1	D	213	ARG	NE-CZ-NH2	-5.07	117.77	120.30
1	B	222	LEU	CB-CG-CD1	5.00	119.50	111.00

There are no chirality outliers.

There are no planarity outliers.

5.2 Too-close contacts [i](#)

In the following table, the Non-H and H(model) columns list the number of non-hydrogen atoms and hydrogen atoms in the chain respectively. The H(added) column lists the number of hydrogen atoms added and optimized by MolProbity. The Clashes column lists the number of clashes within the asymmetric unit, whereas Symm-Clashes lists symmetry-related clashes.

Mol	Chain	Non-H	H(model)	H(added)	Clashes	Symm-Clashes
1	A	1654	0	1619	22	0
1	B	1612	0	1577	24	0
1	C	1654	0	1619	18	0
1	D	1650	0	1624	11	0
2	A	1	0	0	0	0
3	A	8	0	14	0	0
3	B	8	0	14	0	0
3	C	8	0	14	0	0
3	D	8	0	14	1	0
4	A	192	0	0	3	0
4	B	169	0	0	7	0
4	C	164	0	0	7	0
4	D	175	0	0	5	0
All	All	7303	0	6495	72	0

The all-atom clashscore is defined as the number of clashes found per 1000 atoms (including hydrogen atoms). The all-atom clashscore for this structure is 6.

All (72) close contacts within the same asymmetric unit are listed below, sorted by their clash magnitude.

Atom-1	Atom-2	Interatomic distance (Å)	Clash overlap (Å)
4:B:966:HOH:O	1:C:54:CYS:HB3	1.27	1.26
1:C:255:ASP:OD2	4:C:866:HOH:O	1.70	1.10
1:A:255:ASP:HB3	4:A:917:HOH:O	1.63	0.97
1:C:255:ASP:HB3	4:C:964:HOH:O	1.72	0.89
1:B:49:LYS:HE2	1:B:53:HIS:HD2	1.41	0.86
1:A:44:ARG:HH12	1:A:334:LYS:HG2	1.48	0.76
1:D:44:ARG:NH1	4:D:936:HOH:O	2.16	0.76
1:C:307:MET:HE1	4:C:965:HOH:O	1.86	0.75
1:A:220:SER:HB2	4:A:979:HOH:O	1.86	0.74
1:B:49:LYS:CE	1:B:53:HIS:HD2	2.01	0.73
1:A:45:SER:OG	1:A:55:ASN:ND2	2.23	0.71
1:B:250:ILE:HD11	1:B:278:PRO:HG2	1.74	0.69
1:B:255:ASP:OD2	4:B:960:HOH:O	2.13	0.67
1:B:42:HIS:HD2	1:B:43:GLY:O	1.79	0.66

Continued on next page...

Continued from previous page...

Atom-1	Atom-2	Interatomic distance (Å)	Clash overlap (Å)
1:A:281:ASP:OD2	1:A:359:ARG:NH1	2.29	0.64
1:A:61:VAL:O	1:A:62:GLY:C	2.34	0.64
1:C:56:VAL:O	1:C:219:LYS:NZ	2.27	0.63
1:A:44:ARG:NH1	1:A:334:LYS:HG2	2.14	0.63
1:B:49:LYS:CE	1:B:53:HIS:CD2	2.86	0.58
1:B:312:ARG:NH2	4:B:966:HOH:O	2.36	0.58
1:B:192:THR:HG22	4:B:964:HOH:O	2.04	0.57
1:A:41:SER:HA	1:D:233:LYS:HB2	1.86	0.57
1:C:205:ASP:OD1	4:C:946:HOH:O	2.17	0.57
1:B:250:ILE:CD1	1:B:278:PRO:HG2	2.35	0.56
1:B:222:LEU:HD11	1:B:309:LYS:HB2	1.87	0.56
1:B:217:LEU:HD11	1:B:311:CYS:SG	2.46	0.55
1:A:242:TYR:CE2	1:A:244:PRO:HG3	2.44	0.53
1:C:207:LYS:HD3	1:C:272:GLU:OE1	2.09	0.53
1:D:61:VAL:HG13	4:D:918:HOH:O	2.09	0.52
1:C:325:ARG:HD3	4:C:840:HOH:O	2.10	0.52
1:B:324:HIS:CD2	1:B:349:GLU:OE1	2.63	0.52
1:C:281:ASP:HB2	4:C:941:HOH:O	2.11	0.51
1:D:232:LEU:HD22	1:D:247:GLN:HG2	1.91	0.51
1:A:42:HIS:HD2	1:A:43:GLY:O	1.93	0.51
1:C:191:GLU:HG2	4:C:968:HOH:O	2.11	0.49
1:B:61:VAL:HG12	4:B:870:HOH:O	2.12	0.49
1:D:214:VAL:HG21	1:D:298:LEU:HD22	1.95	0.48
1:C:284:LYS:HD3	1:C:355:LEU:HD22	1.96	0.48
1:B:248:ILE:HG12	4:B:919:HOH:O	2.14	0.47
1:D:249:ASP:HB3	4:D:881:HOH:O	2.15	0.47
1:B:49:LYS:HE2	1:B:53:HIS:CD2	2.33	0.46
1:A:284:LYS:HE3	1:A:288:ASP:OD2	2.15	0.46
1:C:253:GLY:HA3	1:C:258:ILE:HG13	1.97	0.46
1:D:191:GLU:O	1:D:218:GLN:HG2	2.16	0.45
1:A:232:LEU:HD11	1:A:295:VAL:CG2	2.47	0.45
1:A:318:ASN:ND2	1:A:319:GLU:HG3	2.32	0.45
1:D:329:VAL:HG12	1:D:343:ARG:HB2	1.98	0.44
1:A:329:VAL:HG12	1:A:343:ARG:HB2	1.99	0.44
1:C:329:VAL:HG12	1:C:343:ARG:HB2	1.98	0.44
1:C:336:TYR:HD1	1:C:337:TYR:O	2.01	0.44
1:B:217:LEU:HA	4:B:963:HOH:O	2.18	0.44
1:C:245:LEU:HD13	3:D:801:MPD:H11	1.99	0.44
1:A:232:LEU:HD11	1:A:295:VAL:HG21	2.00	0.44
1:A:62:GLY:O	1:A:63:GLU:CB	2.67	0.43
1:B:62:GLY:C	1:B:64:LYS:H	2.21	0.43

Continued on next page...

Continued from previous page...

Atom-1	Atom-2	Interatomic distance (Å)	Clash overlap (Å)
1:B:235:ARG:HD3	1:B:246:ASP:OD2	2.18	0.43
1:C:207:LYS:HD3	1:C:272:GLU:CD	2.40	0.42
1:D:218:GLN:NE2	4:D:952:HOH:O	2.51	0.42
1:A:221:HIS:HE1	4:A:810:HOH:O	2.03	0.42
1:B:318:ASN:HD22	1:B:319:GLU:HG3	1.83	0.42
1:A:369:SER:OG	1:A:370:ASN:ND2	2.52	0.42
1:B:310:GLN:HB2	1:C:223:VAL:HG22	2.02	0.42
1:B:318:ASN:HD22	1:B:318:ASN:C	2.23	0.42
1:A:293:GLU:OE2	1:B:42:HIS:HE1	2.04	0.41
1:C:54:CYS:SG	1:C:219:LYS:HE3	2.61	0.41
1:A:318:ASN:HD22	1:A:318:ASN:C	2.24	0.41
1:A:220:SER:OG	1:A:303:GLU:HB3	2.20	0.41
1:B:57:GLN:HE21	1:B:336:TYR:HE1	1.69	0.41
1:D:45:SER:HB2	4:D:853:HOH:O	2.20	0.41
1:D:212:TRP:HA	1:D:326:TYR:OH	2.20	0.41
1:B:318:ASN:ND2	1:B:319:GLU:HG3	2.35	0.40
1:A:196:SER:HB3	1:A:213:ARG:HB3	2.03	0.40

There are no symmetry-related clashes.

5.3 Torsion angles [i](#)

5.3.1 Protein backbone [i](#)

In the following table, the Percentiles column shows the percent Ramachandran outliers of the chain as a percentile score with respect to all X-ray entries followed by that with respect to entries of similar resolution.

The Analysed column shows the number of residues for which the backbone conformation was analysed, and the total number of residues.

Mol	Chain	Analysed	Favoured	Allowed	Outliers	Percentiles	
1	A	204/208 (98%)	196 (96%)	5 (2%)	3 (2%)	10	4
1	B	199/208 (96%)	188 (94%)	10 (5%)	1 (0%)	29	22
1	C	204/208 (98%)	201 (98%)	2 (1%)	1 (0%)	29	22
1	D	203/208 (98%)	197 (97%)	4 (2%)	2 (1%)	15	9
All	All	810/832 (97%)	782 (96%)	21 (3%)	7 (1%)	17	10

All (7) Ramachandran outliers are listed below:

Mol	Chain	Res	Type
1	A	63	GLU
1	A	62	GLY
1	C	64	LYS
1	A	64	LYS
1	B	189	ARG
1	D	364	LYS
1	D	64	LYS

5.3.2 Protein sidechains [i](#)

In the following table, the Percentiles column shows the percent sidechain outliers of the chain as a percentile score with respect to all X-ray entries followed by that with respect to entries of similar resolution.

The Analysed column shows the number of residues for which the sidechain conformation was analysed, and the total number of residues.

Mol	Chain	Analysed	Rotameric	Outliers	Percentiles	
1	A	182/186 (98%)	176 (97%)	6 (3%)	38	36
1	B	177/186 (95%)	171 (97%)	6 (3%)	37	35
1	C	182/186 (98%)	176 (97%)	6 (3%)	38	36
1	D	182/186 (98%)	175 (96%)	7 (4%)	33	30
All	All	723/744 (97%)	698 (96%)	25 (4%)	36	34

All (25) residues with a non-rotameric sidechain are listed below:

Mol	Chain	Res	Type
1	A	191	GLU
1	A	220	SER
1	A	285	GLN
1	A	318	ASN
1	A	338	LYS
1	A	359	ARG
1	B	63	GLU
1	B	222	LEU
1	B	281	ASP
1	B	285	GLN
1	B	312	ARG
1	B	318	ASN
1	C	204	ARG
1	C	231	LEU
1	C	249	ASP

Continued on next page...

Continued from previous page...

Mol	Chain	Res	Type
1	C	275	GLU
1	C	281	ASP
1	C	349	GLU
1	D	41	SER
1	D	49	LYS
1	D	61	VAL
1	D	64	LYS
1	D	363	GLU
1	D	366	TYR
1	D	368	LEU

Sometimes sidechains can be flipped to improve hydrogen bonding and reduce clashes. All (16) such sidechains are listed below:

Mol	Chain	Res	Type
1	A	42	HIS
1	A	55	ASN
1	A	221	HIS
1	A	318	ASN
1	A	370	ASN
1	B	42	HIS
1	B	53	HIS
1	B	55	ASN
1	B	57	GLN
1	B	318	ASN
1	C	53	HIS
1	C	230	GLN
1	C	247	GLN
1	C	289	ASN
1	D	55	ASN
1	D	218	GLN

5.3.3 RNA [i](#)

There are no RNA molecules in this entry.

5.4 Non-standard residues in protein, DNA, RNA chains [i](#)

There are no non-standard protein/DNA/RNA residues in this entry.

5.5 Carbohydrates [i](#)

There are no monosaccharides in this entry.

5.6 Ligand geometry [i](#)

Of 5 ligands modelled in this entry, 1 is monoatomic - leaving 4 for Mogul analysis.

In the following table, the Counts columns list the number of bonds (or angles) for which Mogul statistics could be retrieved, the number of bonds (or angles) that are observed in the model and the number of bonds (or angles) that are defined in the Chemical Component Dictionary. The Link column lists molecule types, if any, to which the group is linked. The Z score for a bond length (or angle) is the number of standard deviations the observed value is removed from the expected value. A bond length (or angle) with $|Z| > 2$ is considered an outlier worth inspection. RMSZ is the root-mean-square of all Z scores of the bond lengths (or angles).

Mol	Type	Chain	Res	Link	Bond lengths			Bond angles		
					Counts	RMSZ	$\# Z > 2$	Counts	RMSZ	$\# Z > 2$
3	MPD	C	804	-	7,7,7	0.49	0	9,10,10	0.33	0
3	MPD	A	803	-	7,7,7	0.48	0	9,10,10	0.55	0
3	MPD	D	801	-	7,7,7	0.61	0	9,10,10	0.95	1 (11%)
3	MPD	B	802	-	7,7,7	0.55	0	9,10,10	0.62	0

In the following table, the Chirals column lists the number of chiral outliers, the number of chiral centers analysed, the number of these observed in the model and the number defined in the Chemical Component Dictionary. Similar counts are reported in the Torsion and Rings columns. '2' means no outliers of that kind were identified.

Mol	Type	Chain	Res	Link	Chirals	Torsions	Rings
3	MPD	C	804	-	-	1/5/5/5	-
3	MPD	A	803	-	-	1/5/5/5	-
3	MPD	D	801	-	-	0/5/5/5	-
3	MPD	B	802	-	-	1/5/5/5	-

There are no bond length outliers.

All (1) bond angle outliers are listed below:

Mol	Chain	Res	Type	Atoms	Z	Observed(°)	Ideal(°)
3	D	801	MPD	O2-C2-CM	-2.12	101.27	108.08

There are no chirality outliers.

All (3) torsion outliers are listed below:

Mol	Chain	Res	Type	Atoms
3	A	803	MPD	O2-C2-C3-C4
3	B	802	MPD	O2-C2-C3-C4
3	C	804	MPD	O2-C2-C3-C4

There are no ring outliers.

1 monomer is involved in 1 short contact:

Mol	Chain	Res	Type	Clashes	Symm-Clashes
3	D	801	MPD	1	0

5.7 Other polymers [i](#)

There are no such residues in this entry.

5.8 Polymer linkage issues [i](#)

There are no chain breaks in this entry.

6 Fit of model and data

6.1 Protein, DNA and RNA chains

In the following table, the column labelled ‘#RSRZ > 2’ contains the number (and percentage) of RSRZ outliers, followed by percent RSRZ outliers for the chain as percentile scores relative to all X-ray entries and entries of similar resolution. The OWAB column contains the minimum, median, 95th percentile and maximum values of the occupancy-weighted average B-factor per residue. The column labelled ‘Q < 0.9’ lists the number of (and percentage) of residues with an average occupancy less than 0.9.

Mol	Chain	Analysed	<RSRZ>	#RSRZ>2	OWAB(Å ²)	Q<0.9
1	A	206/208 (99%)	-0.13	10 (4%) 29 29	14, 24, 51, 64	0
1	B	201/208 (96%)	-0.08	11 (5%) 25 24	12, 24, 48, 71	0
1	C	206/208 (99%)	-0.28	8 (3%) 39 39	15, 24, 47, 66	0
1	D	205/208 (98%)	-0.14	8 (3%) 39 39	14, 24, 50, 77	0
All	All	818/832 (98%)	-0.16	37 (4%) 33 32	12, 24, 51, 77	0

All (37) RSRZ outliers are listed below:

Mol	Chain	Res	Type	RSRZ
1	B	189	ARG	8.7
1	D	366	TYR	6.3
1	D	367	ILE	5.5
1	B	365	LYS	5.1
1	C	366	TYR	5.0
1	A	62	GLY	4.9
1	B	190	ASN	4.8
1	D	368	LEU	4.7
1	B	63	GLU	4.2
1	A	367	ILE	4.1
1	A	370	ASN	3.9
1	A	366	TYR	3.8
1	B	64	LYS	3.7
1	C	368	LEU	3.7
1	B	193	LEU	3.6
1	B	362	ALA	3.5
1	A	41	SER	3.5
1	A	63	GLU	3.2
1	A	368	LEU	3.2
1	C	370	ASN	3.1
1	A	190	ASN	2.9

Continued on next page...

Continued from previous page...

Mol	Chain	Res	Type	RSRZ
1	D	219	LYS	2.9
1	C	369	SER	2.9
1	C	367	ILE	2.9
1	D	363	GLU	2.7
1	C	190	ASN	2.5
1	D	64	LYS	2.5
1	B	62	GLY	2.2
1	B	364	LYS	2.2
1	A	369	SER	2.2
1	A	363	GLU	2.2
1	B	53	HIS	2.1
1	D	359	ARG	2.1
1	C	361	LEU	2.1
1	C	62	GLY	2.1
1	B	360	ASP	2.0
1	D	275	GLU	2.0

6.2 Non-standard residues in protein, DNA, RNA chains [i](#)

There are no non-standard protein/DNA/RNA residues in this entry.

6.3 Carbohydrates [i](#)

There are no monosaccharides in this entry.

6.4 Ligands [i](#)

In the following table, the Atoms column lists the number of modelled atoms in the group and the number defined in the chemical component dictionary. The B-factors column lists the minimum, median, 95th percentile and maximum values of B factors of atoms in the group. The column labelled 'Q< 0.9' lists the number of atoms with occupancy less than 0.9.

Mol	Type	Chain	Res	Atoms	RSCC	RSR	B-factors(Å ²)	Q<0.9
3	MPD	B	802	8/8	0.89	0.13	24,27,27,28	0
3	MPD	A	803	8/8	0.92	0.14	32,36,37,38	0
3	MPD	C	804	8/8	0.94	0.12	30,33,34,35	0
3	MPD	D	801	8/8	0.94	0.10	22,23,25,26	0
2	K	A	800	1/1	0.98	0.05	37,37,37,37	0

6.5 Other polymers [i](#)

There are no such residues in this entry.