



Full wwPDB X-ray Structure Validation Report

Aug 30, 2020 – 11:07 AM BST

PDB ID : 6GDP
Title : Trypanosoma brucei PTR1 in complex with inhibitor 4l (F162)
Authors : Pozzi, C.; Landi, G.; Mangani, S.
Deposited on : 2018-04-24
Resolution : 1.52 Å(reported)

This is a Full wwPDB X-ray Structure Validation Report for a publicly released PDB entry.

We welcome your comments at validation@mail.wwpdb.org

A user guide is available at

<https://www.wwpdb.org/validation/2017/XrayValidationReportHelp>

with specific help available everywhere you see the  symbol.

The following versions of software and data (see [references](#) ) were used in the production of this report:

MolProbity : 4.02b-467
Mogul : 1.8.5 (274361), CSD as541be (2020)
Xtriage (Phenix) : 1.13
EDS : 2.13
buster-report : 1.1.7 (2018)
Percentile statistics : 20191225.v01 (using entries in the PDB archive December 25th 2019)
Refmac : 5.8.0158
CCP4 : 7.0.044 (Gargrove)
Ideal geometry (proteins) : Engh & Huber (2001)
Ideal geometry (DNA, RNA) : Parkinson et al. (1996)
Validation Pipeline (wwPDB-VP) : 2.13

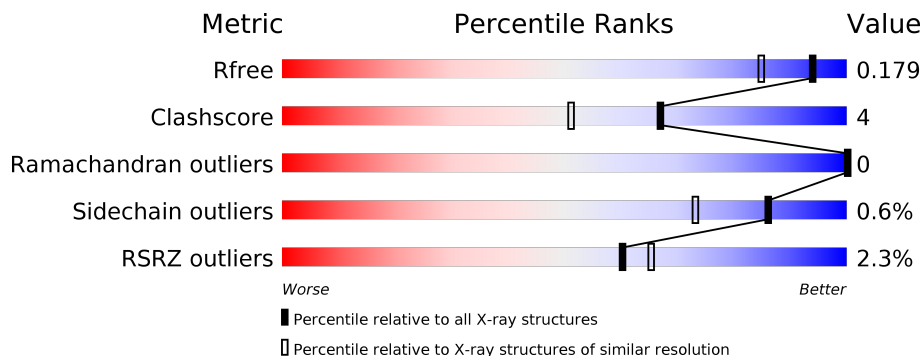
1 Overall quality at a glance

The following experimental techniques were used to determine the structure:

X-RAY DIFFRACTION

The reported resolution of this entry is 1.52 Å.

Percentile scores (ranging between 0-100) for global validation metrics of the entry are shown in the following graphic. The table shows the number of entries on which the scores are based.



Metric	Whole archive (#Entries)	Similar resolution (#Entries, resolution range(Å))
R_{free}	130704	4009 (1.54-1.50)
Clashscore	141614	4249 (1.54-1.50)
Ramachandran outliers	138981	4148 (1.54-1.50)
Sidechain outliers	138945	4146 (1.54-1.50)
RSRZ outliers	127900	3943 (1.54-1.50)

The table below summarises the geometric issues observed across the polymeric chains and their fit to the electron density. The red, orange, yellow and green segments on the lower bar indicate the fraction of residues that contain outliers for ≥ 3 , 2, 1 and 0 types of geometric quality criteria respectively. A grey segment represents the fraction of residues that are not modelled. The numeric value for each fraction is indicated below the corresponding segment, with a dot representing fractions $\leq 5\%$. The upper red bar (where present) indicates the fraction of residues that have poor fit to the electron density. The numeric value is given above the bar.

Mol	Chain	Length	Quality of chain
1	A	288	 2% 82% 6% 13%
1	B	288	 2% 80% 8% 12%
1	C	288	 3% 80% 8% 13%
1	D	288	 % 81% 6% 13%

The following table lists non-polymeric compounds, carbohydrate monomers and non-standard residues in protein, DNA, RNA chains that are outliers for geometric or electron-density-fit crite-

ria:

Mol	Type	Chain	Res	Chirality	Geometry	Clashes	Electron density
5	GOL	B	304[A]	-	-	X	-
5	GOL	B	306	-	-	X	-

2 Entry composition [i](#)

There are 6 unique types of molecules in this entry. The entry contains 9073 atoms, of which 0 are hydrogens and 0 are deuteriums.

In the tables below, the ZeroOcc column contains the number of atoms modelled with zero occupancy, the AltConf column contains the number of residues with at least one atom in alternate conformation and the Trace column contains the number of residues modelled with at most 2 atoms.

- Molecule 1 is a protein called Pteridine reductase.

Mol	Chain	Residues	Atoms					ZeroOcc	AltConf	Trace
			Total	C	N	O	S			
1	A	252	1955	1238	344	361	12	0	15	0
1	B	253	1955	1244	335	364	12	0	18	0
1	C	251	1903	1202	332	357	12	0	13	0
1	D	250	1933	1227	335	359	12	0	16	0

There are 80 discrepancies between the modelled and reference sequences:

Chain	Residue	Modelled	Actual	Comment	Reference
A	-19	MET	-	initiating methionine	UNP O76290
A	-18	GLY	-	expression tag	UNP O76290
A	-17	SER	-	expression tag	UNP O76290
A	-16	SER	-	expression tag	UNP O76290
A	-15	HIS	-	expression tag	UNP O76290
A	-14	HIS	-	expression tag	UNP O76290
A	-13	HIS	-	expression tag	UNP O76290
A	-12	HIS	-	expression tag	UNP O76290
A	-11	HIS	-	expression tag	UNP O76290
A	-10	HIS	-	expression tag	UNP O76290
A	-9	SER	-	expression tag	UNP O76290
A	-8	SER	-	expression tag	UNP O76290
A	-7	GLY	-	expression tag	UNP O76290
A	-6	LEU	-	expression tag	UNP O76290
A	-5	VAL	-	expression tag	UNP O76290
A	-4	PRO	-	expression tag	UNP O76290
A	-3	ARG	-	expression tag	UNP O76290
A	-2	GLY	-	expression tag	UNP O76290
A	-1	SER	-	expression tag	UNP O76290
A	0	HIS	-	expression tag	UNP O76290
B	-19	MET	-	initiating methionine	UNP O76290

Continued on next page...

Continued from previous page...

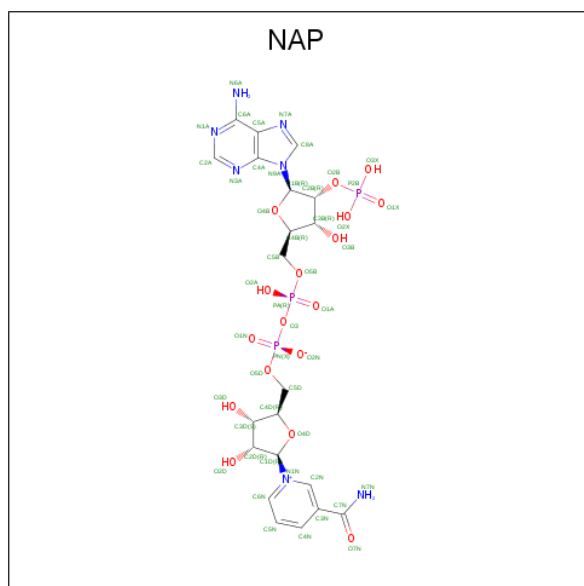
Chain	Residue	Modelled	Actual	Comment	Reference
B	-18	GLY	-	expression tag	UNP O76290
B	-17	SER	-	expression tag	UNP O76290
B	-16	SER	-	expression tag	UNP O76290
B	-15	HIS	-	expression tag	UNP O76290
B	-14	HIS	-	expression tag	UNP O76290
B	-13	HIS	-	expression tag	UNP O76290
B	-12	HIS	-	expression tag	UNP O76290
B	-11	HIS	-	expression tag	UNP O76290
B	-10	HIS	-	expression tag	UNP O76290
B	-9	SER	-	expression tag	UNP O76290
B	-8	SER	-	expression tag	UNP O76290
B	-7	GLY	-	expression tag	UNP O76290
B	-6	LEU	-	expression tag	UNP O76290
B	-5	VAL	-	expression tag	UNP O76290
B	-4	PRO	-	expression tag	UNP O76290
B	-3	ARG	-	expression tag	UNP O76290
B	-2	GLY	-	expression tag	UNP O76290
B	-1	SER	-	expression tag	UNP O76290
B	0	HIS	-	expression tag	UNP O76290
C	-19	MET	-	initiating methionine	UNP O76290
C	-18	GLY	-	expression tag	UNP O76290
C	-17	SER	-	expression tag	UNP O76290
C	-16	SER	-	expression tag	UNP O76290
C	-15	HIS	-	expression tag	UNP O76290
C	-14	HIS	-	expression tag	UNP O76290
C	-13	HIS	-	expression tag	UNP O76290
C	-12	HIS	-	expression tag	UNP O76290
C	-11	HIS	-	expression tag	UNP O76290
C	-10	HIS	-	expression tag	UNP O76290
C	-9	SER	-	expression tag	UNP O76290
C	-8	SER	-	expression tag	UNP O76290
C	-7	GLY	-	expression tag	UNP O76290
C	-6	LEU	-	expression tag	UNP O76290
C	-5	VAL	-	expression tag	UNP O76290
C	-4	PRO	-	expression tag	UNP O76290
C	-3	ARG	-	expression tag	UNP O76290
C	-2	GLY	-	expression tag	UNP O76290
C	-1	SER	-	expression tag	UNP O76290
C	0	HIS	-	expression tag	UNP O76290
D	-19	MET	-	initiating methionine	UNP O76290
D	-18	GLY	-	expression tag	UNP O76290
D	-17	SER	-	expression tag	UNP O76290

Continued on next page...

Continued from previous page...

Chain	Residue	Modelled	Actual	Comment	Reference
D	-16	SER	-	expression tag	UNP O76290
D	-15	HIS	-	expression tag	UNP O76290
D	-14	HIS	-	expression tag	UNP O76290
D	-13	HIS	-	expression tag	UNP O76290
D	-12	HIS	-	expression tag	UNP O76290
D	-11	HIS	-	expression tag	UNP O76290
D	-10	HIS	-	expression tag	UNP O76290
D	-9	SER	-	expression tag	UNP O76290
D	-8	SER	-	expression tag	UNP O76290
D	-7	GLY	-	expression tag	UNP O76290
D	-6	LEU	-	expression tag	UNP O76290
D	-5	VAL	-	expression tag	UNP O76290
D	-4	PRO	-	expression tag	UNP O76290
D	-3	ARG	-	expression tag	UNP O76290
D	-2	GLY	-	expression tag	UNP O76290
D	-1	SER	-	expression tag	UNP O76290
D	0	HIS	-	expression tag	UNP O76290

- Molecule 2 is NADP NICOTINAMIDE-ADENINE-DINUCLEOTIDE PHOSPHATE (three-letter code: NAP) (formula: $C_{21}H_{28}N_7O_{17}P_3$).



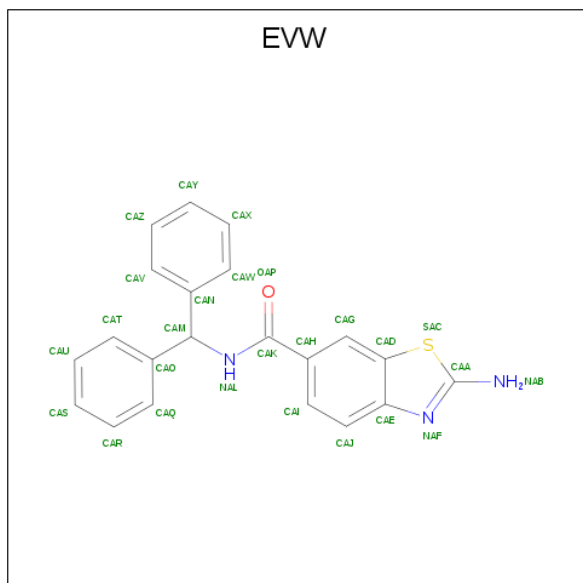
Mol	Chain	Residues	Atoms				ZeroOcc	AltConf	
			Total	C	N	O			P
2	A	1	48	21	7	17	3	0	0
2	B	1	48	21	7	17	3	0	0

Continued on next page...

Continued from previous page...

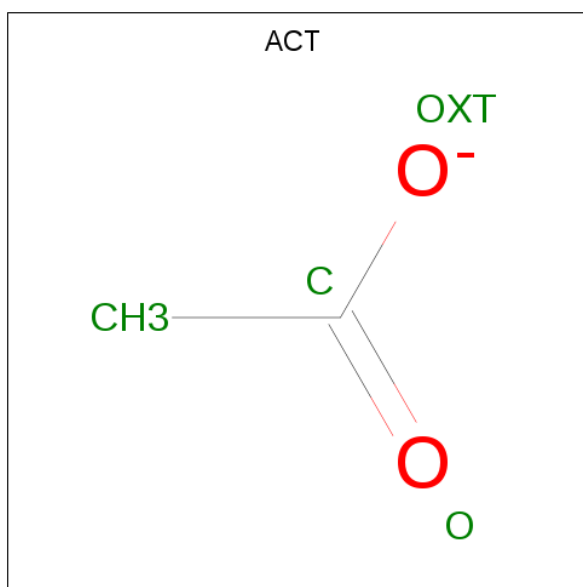
Mol	Chain	Residues	Atoms				ZeroOcc	AltConf	
2	C	1	Total	C	N	O	P	0	0
			48	21	7	17	3		
2	D	1	Total	C	N	O	P	0	0
			48	21	7	17	3		

- Molecule 3 is 2-azanyl- {N}-(diphenylmethyl)-1,3-benzothiazole-6-carboxamide (three-letter code: EVW) (formula: C₂₁H₁₇N₃OS).



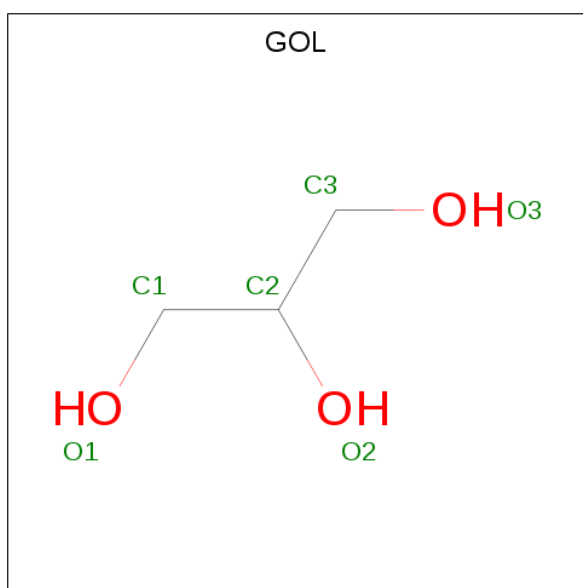
Mol	Chain	Residues	Atoms				ZeroOcc	AltConf	
3	A	1	Total	C	N	O	S	0	1
			26	21	3	1	1		
3	B	1	Total	C	N	O	S	0	1
			26	21	3	1	1		
3	D	1	Total	C	N	O	S	0	1
			26	21	3	1	1		

- Molecule 4 is ACETATE ION (three-letter code: ACT) (formula: C₂H₃O₂).



Mol	Chain	Residues	Atoms			ZeroOcc	AltConf
4	A	1	Total	C	O	0	0
			4	2	2		
4	B	1	Total	C	O	0	0
			4	2	2		

- Molecule 5 is GLYCEROL (three-letter code: GOL) (formula: C₃H₈O₃).



Mol	Chain	Residues	Atoms			ZeroOcc	AltConf
5	A	1	Total	C	O	0	0
			6	3	3		
5	B	1	Total	C	O	0	1
			12	6	6		

Continued on next page...

Continued from previous page...

Mol	Chain	Residues	Atoms			ZeroOcc	AltConf
5	B	1	Total	C	O	0	0
			6	3	3		
5	B	1	Total	C	O	0	0
			6	3	3		
5	D	1	Total	C	O	0	1
			12	6	6		

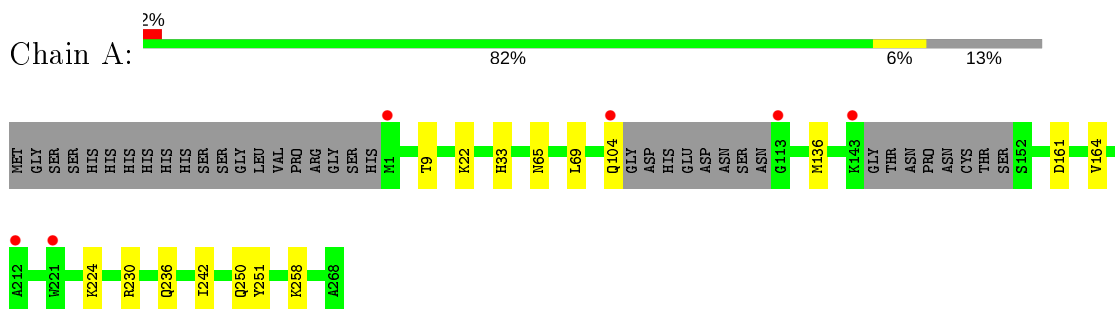
- Molecule 6 is water.

Mol	Chain	Residues	Atoms		ZeroOcc	AltConf
6	A	248	Total	O	0	5
			251	251		
6	B	277	Total	O	0	9
			278	278		
6	C	216	Total	O	0	9
			224	224		
6	D	248	Total	O	0	10
			254	254		

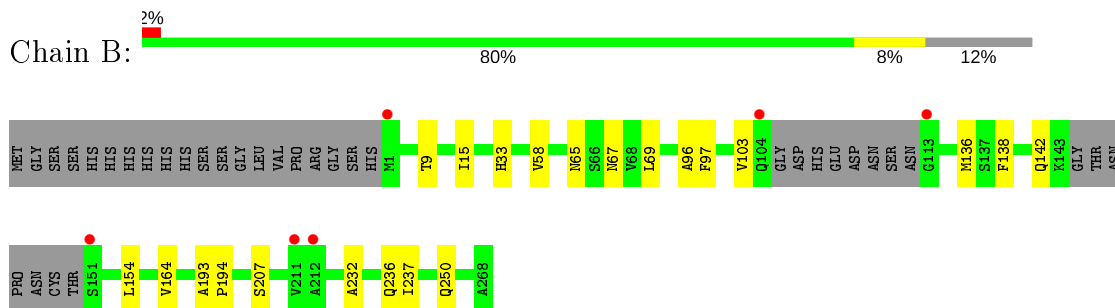
3 Residue-property plots [i](#)

These plots are drawn for all protein, RNA, DNA and oligosaccharide chains in the entry. The first graphic for a chain summarises the proportions of the various outlier classes displayed in the second graphic. The second graphic shows the sequence view annotated by issues in geometry and electron density. Residues are color-coded according to the number of geometric quality criteria for which they contain at least one outlier: green = 0, yellow = 1, orange = 2 and red = 3 or more. A red dot above a residue indicates a poor fit to the electron density ($RSRZ > 2$). Stretches of 2 or more consecutive residues without any outlier are shown as a green connector. Residues present in the sample, but not in the model, are shown in grey.

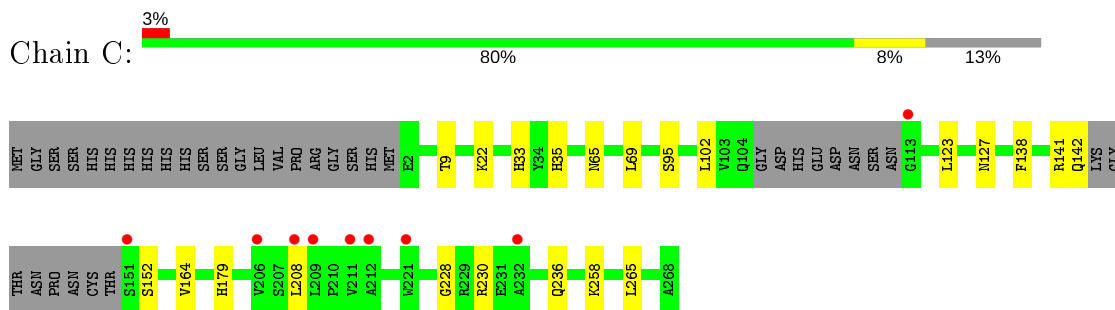
- Molecule 1: Pteridine reductase



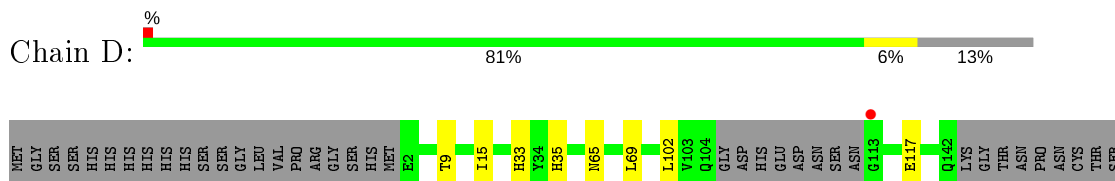
- Molecule 1: Pteridine reductase



- Molecule 1: Pteridine reductase



- Molecule 1: Pteridine reductase





4 Data and refinement statistics i

Property	Value	Source
Space group	P 1 21 1	Depositor
Cell constants a, b, c, α , β , γ	74.78Å 90.32Å 82.92Å 90.00° 115.72° 90.00°	Depositor
Resolution (Å)	74.71 – 1.52 66.37 – 1.52	Depositor EDS
% Data completeness (in resolution range)	99.1 (74.71-1.52) 99.1 (66.37-1.52)	Depositor EDS
R_{merge}	0.05	Depositor
R_{sym}	(Not available)	Depositor
$\langle I/\sigma(I) \rangle$ ¹	3.54 (at 1.52Å)	Xtrriage
Refinement program	REFMAC 5.8.0158	Depositor
R, R_{free}	0.159 , 0.179 0.159 , 0.179	Depositor DCC
R_{free} test set	7646 reflections (5.06%)	wwPDB-VP
Wilson B-factor (Å ²)	13.7	Xtrriage
Anisotropy	0.048	Xtrriage
Bulk solvent k_{sol} (e/Å ³), B_{sol} (Å ²)	0.38 , 52.5	EDS
L-test for twinning ²	$\langle L \rangle = 0.50$, $\langle L^2 \rangle = 0.33$	Xtrriage
Estimated twinning fraction	0.011 for h,-k,-h-l	Xtrriage
F_o, F_c correlation	0.97	EDS
Total number of atoms	9073	wwPDB-VP
Average B, all atoms (Å ²)	18.0	wwPDB-VP

Xtrriage's analysis on translational NCS is as follows: *The analyses of the Patterson function reveals a significant off-origin peak that is 30.37 % of the origin peak, indicating pseudo-translational symmetry. The chance of finding a peak of this or larger height randomly in a structure without pseudo-translational symmetry is equal to 1.3240e-03. The detected translational NCS is most likely also responsible for the elevated intensity ratio.*

¹Intensities estimated from amplitudes.

²Theoretical values of $\langle |L| \rangle$, $\langle L^2 \rangle$ for acentric reflections are 0.5, 0.333 respectively for untwinned datasets, and 0.375, 0.2 for perfectly twinned datasets.

5 Model quality [i](#)

5.1 Standard geometry [i](#)

Bond lengths and bond angles in the following residue types are not validated in this section: GOL, NAP, ACT, EVW

The Z score for a bond length (or angle) is the number of standard deviations the observed value is removed from the expected value. A bond length (or angle) with $|Z| > 5$ is considered an outlier worth inspection. RMSZ is the root-mean-square of all Z scores of the bond lengths (or angles).

Mol	Chain	Bond lengths		Bond angles	
		RMSZ	# Z >5	RMSZ	# Z >5
1	A	0.68	0/2023	0.77	0/2741
1	B	0.70	0/2038	0.80	0/2766
1	C	0.68	0/1966	0.76	0/2669
1	D	0.70	0/2007	0.78	0/2725
All	All	0.69	0/8034	0.78	0/10901

There are no bond length outliers.

There are no bond angle outliers.

There are no chirality outliers.

There are no planarity outliers.

5.2 Too-close contacts [i](#)

In the following table, the Non-H and H(model) columns list the number of non-hydrogen atoms and hydrogen atoms in the chain respectively. The H(added) column lists the number of hydrogen atoms added and optimized by MolProbity. The Clashes column lists the number of clashes within the asymmetric unit, whereas Symm-Clashes lists symmetry related clashes.

Mol	Chain	Non-H	H(model)	H(added)	Clashes	Symm-Clashes
1	A	1955	0	2014	16	0
1	B	1955	0	2015	31	0
1	C	1903	0	1930	17	0
1	D	1933	0	1984	12	0
2	A	48	0	25	0	0
2	B	48	0	25	1	0
2	C	48	0	25	3	0
2	D	48	0	25	2	0
3	A	26	0	0	0	0

Continued on next page...

Continued from previous page...

Mol	Chain	Non-H	H(model)	H(added)	Clashes	Symm-Clashes
3	B	26	0	0	0	0
3	D	26	0	0	0	0
4	A	4	0	3	0	0
4	B	4	0	3	0	0
5	A	6	0	8	0	0
5	B	24	0	32	10	0
5	D	12	0	16	0	0
6	A	251	0	0	4	0
6	B	278	0	0	1	0
6	C	224	0	0	2	0
6	D	254	0	0	2	0
All	All	9073	0	8105	63	0

The all-atom clashscore is defined as the number of clashes found per 1000 atoms (including hydrogen atoms). The all-atom clashscore for this structure is 4.

All (63) close contacts within the same asymmetric unit are listed below, sorted by their clash magnitude.

Atom-1	Atom-2	Interatomic distance (Å)	Clash overlap (Å)
1:B:97:PHE:H	5:B:306:GOL:H11	1.32	0.92
1:B:97:PHE:H	5:B:306:GOL:C1	1.89	0.85
1:B:58:VAL:HG22	5:B:304[A]:GOL:H11	1.57	0.85
1:B:67[B]:ASN:ND2	1:D:117[B]:GLU:HG3	1.93	0.84
1:B:97:PHE:N	5:B:306:GOL:H11	1.94	0.82
5:B:304[A]:GOL:H12	6:B:413:HOH:O	1.82	0.77
1:D:164:VAL:HG22	1:D:179:HIS:CD2	2.23	0.74
1:B:142[B]:GLN:HG2	1:B:154:LEU:HD13	1.68	0.73
1:C:164:VAL:HG22	1:C:179:HIS:CD2	2.25	0.71
1:C:95[B]:SER:OG	2:C:301:NAP:H3D	1.93	0.69
1:A:230[B]:ARG:NH2	6:A:402:HOH:O	2.25	0.64
1:C:228:GLY:HA3	1:C:230:ARG:NH1	2.13	0.63
1:A:224[A]:LYS:HE3	6:A:433:HOH:O	1.97	0.62
1:A:250[A]:GLN:CD	1:B:236:GLN:HE21	2.03	0.60
1:A:258[B]:LYS:NZ	6:A:632[B]:HOH:O	2.34	0.60
1:B:207:SER:HB2	1:B:237[B]:ILE:HD11	1.88	0.56
1:C:95[B]:SER:OG	2:C:301:NAP:C3D	2.53	0.56
1:A:236:GLN:HE21	1:B:250[B]:GLN:CD	2.09	0.56
1:B:96:ALA:HA	5:B:306:GOL:H11	1.89	0.55
1:A:236:GLN:HE21	1:B:250[B]:GLN:CG	2.19	0.54
1:C:236:GLN:HE21	1:D:250[B]:GLN:CD	2.13	0.51
1:B:103:VAL:HG22	6:D:405[A]:HOH:O	2.09	0.51

Continued on next page...

Continued from previous page...

Atom-1	Atom-2	Interatomic distance (Å)	Clash overlap (Å)
1:A:9:THR:HA	1:A:33:HIS:HB3	1.92	0.51
1:C:9:THR:HA	1:C:33:HIS:HB3	1.93	0.50
1:B:207:SER:CB	1:B:237[B]:ILE:HD11	2.42	0.49
1:A:236:GLN:NE2	1:B:250[B]:GLN:HG3	2.28	0.48
1:B:15:ILE:HB	2:B:301:NAP:H51N	1.94	0.48
1:B:142[B]:GLN:HG2	1:B:154:LEU:CD1	2.40	0.48
1:C:65:ASN:HA	1:C:69:LEU:HD22	1.96	0.48
1:A:250[A]:GLN:CG	1:B:236:GLN:HE21	2.26	0.48
1:C:123:LEU:O	1:C:127[B]:ASN:HB2	2.13	0.48
1:C:208:LEU:HD21	6:C:548:HOH:O	2.12	0.48
1:D:9:THR:HA	1:D:33:HIS:HB3	1.99	0.45
1:D:224[A]:LYS:HE3	6:D:459:HOH:O	2.17	0.44
1:A:236:GLN:HE21	1:B:250[B]:GLN:HG3	1.83	0.44
1:B:58:VAL:H	5:B:304[A]:GOL:C1	2.31	0.44
1:C:35:HIS:HB2	2:C:301:NAP:C2A	2.48	0.44
1:B:9:THR:HA	1:B:33:HIS:HB3	2.00	0.44
1:C:164:VAL:HG22	1:C:179:HIS:NE2	2.32	0.44
1:C:258[B]:LYS:HB3	1:D:255:SER:OG	2.17	0.44
1:A:65:ASN:HA	1:A:69:LEU:HD22	1.99	0.44
1:C:95[B]:SER:HB2	1:C:127[B]:ASN:OD1	2.18	0.44
1:A:22:LYS:CD	1:A:242:ILE:HG13	2.48	0.43
1:C:138:PHE:O	1:C:142:GLN:HG2	2.19	0.43
1:B:65:ASN:HA	1:B:69:LEU:HD22	2.00	0.43
1:A:136[B]:MET:HG3	1:C:102:LEU:O	2.19	0.43
1:A:230[B]:ARG:HG3	6:A:583:HOH:O	2.19	0.43
1:D:15:ILE:HB	2:D:301:NAP:H51N	2.01	0.43
1:B:138:PHE:O	1:B:142[A]:GLN:HG2	2.19	0.42
1:B:58:VAL:HG22	5:B:304[A]:GOL:C1	2.40	0.42
1:B:103:VAL:HG21	1:D:195:TYR:CZ	2.54	0.42
1:B:15:ILE:HD13	1:B:237[B]:ILE:HD13	2.01	0.42
1:B:136[B]:MET:HG3	1:D:102:LEU:O	2.18	0.42
1:D:35:HIS:HB2	2:D:301:NAP:C2A	2.50	0.42
1:A:251:TYR:CE2	1:B:232:ALA:HB2	2.55	0.42
1:B:97:PHE:O	5:B:306:GOL:H12	2.20	0.42
1:B:15:ILE:CD1	1:B:237[B]:ILE:CD1	2.98	0.41
1:B:193:ALA:N	1:B:194:PRO:CD	2.83	0.41
1:C:141:ARG:HG2	6:C:549:HOH:O	2.19	0.41
1:D:65:ASN:HA	1:D:69:LEU:HD22	2.01	0.41
1:B:58:VAL:H	5:B:304[A]:GOL:H11	1.85	0.41
1:C:265:LEU:HD11	1:D:254:GLY:HA3	2.02	0.41
1:A:161:ASP:HB3	1:A:164:VAL:HG13	2.03	0.40

There are no symmetry-related clashes.

5.3 Torsion angles [i](#)

5.3.1 Protein backbone [i](#)

In the following table, the Percentiles column shows the percent Ramachandran outliers of the chain as a percentile score with respect to all X-ray entries followed by that with respect to entries of similar resolution.

The Analysed column shows the number of residues for which the backbone conformation was analysed, and the total number of residues.

Mol	Chain	Analysed	Favoured	Allowed	Outliers	Percentiles	
1	A	260/288 (90%)	252 (97%)	8 (3%)	0	100	100
1	B	265/288 (92%)	256 (97%)	9 (3%)	0	100	100
1	C	258/288 (90%)	248 (96%)	10 (4%)	0	100	100
1	D	260/288 (90%)	251 (96%)	9 (4%)	0	100	100
All	All	1043/1152 (90%)	1007 (96%)	36 (4%)	0	100	100

There are no Ramachandran outliers to report.

5.3.2 Protein sidechains [i](#)

In the following table, the Percentiles column shows the percent sidechain outliers of the chain as a percentile score with respect to all X-ray entries followed by that with respect to entries of similar resolution.

The Analysed column shows the number of residues for which the sidechain conformation was analysed, and the total number of residues.

Mol	Chain	Analysed	Rotameric	Outliers	Percentiles	
1	A	211/231 (91%)	210 (100%)	1 (0%)	88	78
1	B	212/231 (92%)	211 (100%)	1 (0%)	88	78
1	C	202/231 (87%)	199 (98%)	3 (2%)	65	38
1	D	209/231 (90%)	208 (100%)	1 (0%)	88	78
All	All	834/924 (90%)	828 (99%)	6 (1%)	86	69

All (6) residues with a non-rotameric sidechain are listed below:

Mol	Chain	Res	Type
1	A	104	GLN
1	B	164	VAL
1	C	22[A]	LYS
1	C	22[B]	LYS
1	C	152	SER
1	D	194	PRO

Some sidechains can be flipped to improve hydrogen bonding and reduce clashes. All (6) such sidechains are listed below:

Mol	Chain	Res	Type
1	A	25	GLN
1	A	236	GLN
1	B	65	ASN
1	B	236	GLN
1	C	54	ASN
1	D	67	ASN

5.3.3 RNA [i](#)

There are no RNA molecules in this entry.

5.4 Non-standard residues in protein, DNA, RNA chains [i](#)

There are no non-standard protein/DNA/RNA residues in this entry.

5.5 Carbohydrates [i](#)

There are no monosaccharides in this entry.

5.6 Ligand geometry [i](#)

16 ligands are modelled in this entry.

In the following table, the Counts columns list the number of bonds (or angles) for which Mogul statistics could be retrieved, the number of bonds (or angles) that are observed in the model and the number of bonds (or angles) that are defined in the Chemical Component Dictionary. The Link column lists molecule types, if any, to which the group is linked. The Z score for a bond length (or angle) is the number of standard deviations the observed value is removed from the expected value. A bond length (or angle) with $|Z| > 2$ is considered an outlier worth inspection. RMSZ is the root-mean-square of all Z scores of the bond lengths (or angles).

Mol	Type	Chain	Res	Link	Bond lengths			Bond angles		
					Counts	RMSZ	# Z > 2	Counts	RMSZ	# Z > 2
5	GOL	D	303[B]	-	5,5,5	0.35	0	5,5,5	0.16	0
5	GOL	B	304[A]	-	5,5,5	0.30	0	5,5,5	0.68	0
3	EVW	D	302[A]	-	26,29,29	2.93	4 (15%)	35,40,40	1.42	7 (20%)
2	NAP	D	301	-	45,52,52	1.15	4 (8%)	56,80,80	1.29	9 (16%)
4	ACT	A	303	-	1,3,3	2.20	1 (100%)	0,3,3	0.00	-
5	GOL	B	304[B]	-	5,5,5	0.28	0	5,5,5	0.39	0
4	ACT	B	303	-	1,3,3	1.50	0	0,3,3	0.00	-
2	NAP	A	301	-	45,52,52	1.14	4 (8%)	56,80,80	1.40	10 (17%)
5	GOL	A	304	-	5,5,5	0.41	0	5,5,5	0.38	0
2	NAP	C	301	-	45,52,52	1.03	3 (6%)	56,80,80	1.30	7 (12%)
5	GOL	B	306	-	5,5,5	0.48	0	5,5,5	0.88	0
2	NAP	B	301	-	45,52,52	0.98	4 (8%)	56,80,80	1.22	5 (8%)
5	GOL	B	305	-	5,5,5	0.35	0	5,5,5	0.96	0
5	GOL	D	303[A]	-	5,5,5	0.23	0	5,5,5	0.36	0
3	EVW	B	302[A]	-	26,29,29	2.63	5 (19%)	35,40,40	1.43	5 (14%)
3	EVW	A	302[A]	-	26,29,29	2.78	4 (15%)	35,40,40	1.40	8 (22%)

In the following table, the Chirals column lists the number of chiral outliers, the number of chiral centers analysed, the number of these observed in the model and the number defined in the Chemical Component Dictionary. Similar counts are reported in the Torsion and Rings columns. '-' means no outliers of that kind were identified.

Mol	Type	Chain	Res	Link	Chirals	Torsions	Rings
5	GOL	D	303[B]	-	-	4/4/4/4	-
5	GOL	B	304[A]	-	-	0/4/4/4	-
3	EVW	D	302[A]	-	-	0/16/16/16	0/4/4/4
2	NAP	D	301	-	-	0/31/67/67	0/5/5/5
5	GOL	B	304[B]	-	-	2/4/4/4	-
2	NAP	A	301	-	-	0/31/67/67	0/5/5/5
5	GOL	A	304	-	-	0/4/4/4	-
2	NAP	C	301	-	-	1/31/67/67	0/5/5/5
5	GOL	B	306	-	-	2/4/4/4	-
2	NAP	B	301	-	-	0/31/67/67	0/5/5/5
5	GOL	B	305	-	-	2/4/4/4	-
5	GOL	D	303[A]	-	-	2/4/4/4	-
3	EVW	B	302[A]	-	-	1/16/16/16	0/4/4/4
3	EVW	A	302[A]	-	-	0/16/16/16	0/4/4/4

All (29) bond length outliers are listed below:

Mol	Chain	Res	Type	Atoms	Z	Observed(Å)	Ideal(Å)
3	D	302[A]	EVW	CAN-CAM	-9.63	1.39	1.52
3	A	302[A]	EVW	CAN-CAM	-9.22	1.40	1.52
3	D	302[A]	EVW	CAO-CAM	-8.78	1.41	1.52
3	B	302[A]	EVW	CAN-CAM	-8.68	1.41	1.52
3	A	302[A]	EVW	CAO-CAM	-8.01	1.42	1.52
3	B	302[A]	EVW	CAO-CAM	-7.84	1.42	1.52
3	D	302[A]	EVW	CAH-CAK	-4.56	1.40	1.50
3	A	302[A]	EVW	CAH-CAK	-4.41	1.41	1.50
3	D	302[A]	EVW	CAJ-CAE	-4.23	1.34	1.41
3	B	302[A]	EVW	CAJ-CAE	-3.79	1.35	1.41
3	A	302[A]	EVW	CAJ-CAE	-3.75	1.35	1.41
2	A	301	NAP	C2A-N3A	3.42	1.37	1.32
3	B	302[A]	EVW	CAH-CAK	-3.39	1.43	1.50
2	D	301	NAP	C2A-N3A	3.36	1.37	1.32
2	C	301	NAP	C5A-C4A	2.98	1.48	1.40
2	C	301	NAP	C2A-N3A	2.96	1.36	1.32
2	A	301	NAP	C2N-N1N	2.73	1.38	1.35
2	D	301	NAP	P2B-O2B	2.48	1.64	1.59
2	D	301	NAP	C7N-N7N	2.48	1.37	1.33
2	D	301	NAP	C5A-C4A	2.44	1.47	1.40
2	A	301	NAP	P2B-O2B	2.31	1.63	1.59
2	B	301	NAP	P2B-O2B	2.27	1.63	1.59
4	A	303	ACT	CH3-C	2.20	1.51	1.48
2	B	301	NAP	C5A-C4A	2.18	1.46	1.40
2	C	301	NAP	O4D-C1D	2.18	1.44	1.41
2	B	301	NAP	C2A-N3A	2.13	1.35	1.32
2	A	301	NAP	C5A-C4A	2.03	1.46	1.40
3	B	302[A]	EVW	CAE-CAD	-2.02	1.35	1.42
2	B	301	NAP	O4D-C1D	2.01	1.43	1.41

All (51) bond angle outliers are listed below:

Mol	Chain	Res	Type	Atoms	Z	Observed(°)	Ideal(°)
2	A	301	NAP	C1B-N9A-C4A	-4.67	118.43	126.64
2	D	301	NAP	C1B-N9A-C4A	-4.43	118.86	126.64
2	A	301	NAP	N3A-C2A-N1A	-3.84	122.68	128.68
2	C	301	NAP	C1B-N9A-C4A	-3.80	119.96	126.64
2	B	301	NAP	C1B-N9A-C4A	-3.67	120.19	126.64
3	B	302[A]	EVW	CAE-CAD-SAC	-3.42	107.32	111.85
2	C	301	NAP	C3N-C7N-N7N	3.39	121.82	117.75
3	D	302[A]	EVW	CAE-CAD-SAC	-3.37	107.38	111.85
3	B	302[A]	EVW	CAG-CAD-SAC	3.33	131.76	125.10
3	D	302[A]	EVW	CAG-CAD-SAC	3.15	131.41	125.10

Continued on next page...

Continued from previous page...

Mol	Chain	Res	Type	Atoms	Z	Observed(°)	Ideal(°)
2	D	301	NAP	N3A-C2A-N1A	-3.03	123.94	128.68
3	B	302[A]	EVW	CAI-CAH-CAG	-2.99	115.66	119.23
2	A	301	NAP	C5N-C4N-C3N	-2.93	116.88	120.34
2	B	301	NAP	N3A-C2A-N1A	-2.92	124.11	128.68
3	A	302[A]	EVW	CAG-CAD-SAC	2.82	130.75	125.10
3	A	302[A]	EVW	OAP-CAK-NAL	-2.79	117.31	122.45
2	D	301	NAP	O7N-C7N-C3N	-2.78	116.30	119.63
2	A	301	NAP	O4D-C1D-C2D	-2.76	102.89	106.93
3	D	302[A]	EVW	CAD-CAE-NAF	2.73	114.39	108.04
3	D	302[A]	EVW	CAN-CAM-CAO	-2.73	106.39	112.33
2	A	301	NAP	O2B-P2B-O1X	-2.72	98.90	109.39
2	C	301	NAP	O2B-P2B-O1X	-2.71	98.92	109.39
2	C	301	NAP	N3A-C2A-N1A	-2.71	124.44	128.68
3	D	302[A]	EVW	CAJ-CAI-CAH	-2.70	117.74	120.79
3	B	302[A]	EVW	NAB-CAA-NAF	2.66	126.63	123.19
3	B	302[A]	EVW	CAD-CAE-NAF	2.55	113.97	108.04
3	A	302[A]	EVW	CAD-CAE-NAF	2.54	113.95	108.04
3	A	302[A]	EVW	CAE-CAD-SAC	-2.51	108.53	111.85
2	C	301	NAP	C2A-N1A-C6A	2.48	122.99	118.75
2	C	301	NAP	C4A-C5A-N7A	-2.43	106.87	109.40
3	A	302[A]	EVW	CAJ-CAI-CAH	-2.42	118.06	120.79
2	B	301	NAP	O7N-C7N-C3N	-2.41	116.74	119.63
2	D	301	NAP	O2B-P2B-O1X	-2.33	100.41	109.39
3	A	302[A]	EVW	CAI-CAH-CAG	-2.29	116.50	119.23
2	B	301	NAP	C3N-C7N-N7N	2.27	120.47	117.75
2	B	301	NAP	C2A-N1A-C6A	2.27	122.63	118.75
3	A	302[A]	EVW	NAB-CAA-NAF	2.24	126.08	123.19
2	D	301	NAP	O2N-PN-O1N	2.23	123.28	112.24
3	D	302[A]	EVW	OAP-CAK-NAL	-2.23	118.35	122.45
2	A	301	NAP	C2A-N1A-C6A	2.22	122.55	118.75
2	D	301	NAP	O3X-P2B-O2X	2.20	116.04	107.64
2	D	301	NAP	C3N-C7N-N7N	2.19	120.38	117.75
2	D	301	NAP	C2A-N1A-C6A	2.13	122.39	118.75
2	C	301	NAP	O2D-C2D-C3D	2.11	118.63	111.82
2	A	301	NAP	N6A-C6A-N1A	2.11	122.94	118.57
2	A	301	NAP	O3X-P2B-O2X	2.08	115.60	107.64
2	A	301	NAP	C2N-C3N-C4N	2.05	120.58	118.26
3	A	302[A]	EVW	CAI-CAJ-CAE	2.04	123.41	120.84
3	D	302[A]	EVW	CAI-CAJ-CAE	2.02	123.38	120.84
2	D	301	NAP	PN-O3-PA	-2.01	125.94	132.83
2	A	301	NAP	C6N-N1N-C2N	-2.01	120.15	121.97

There are no chirality outliers.

All (14) torsion outliers are listed below:

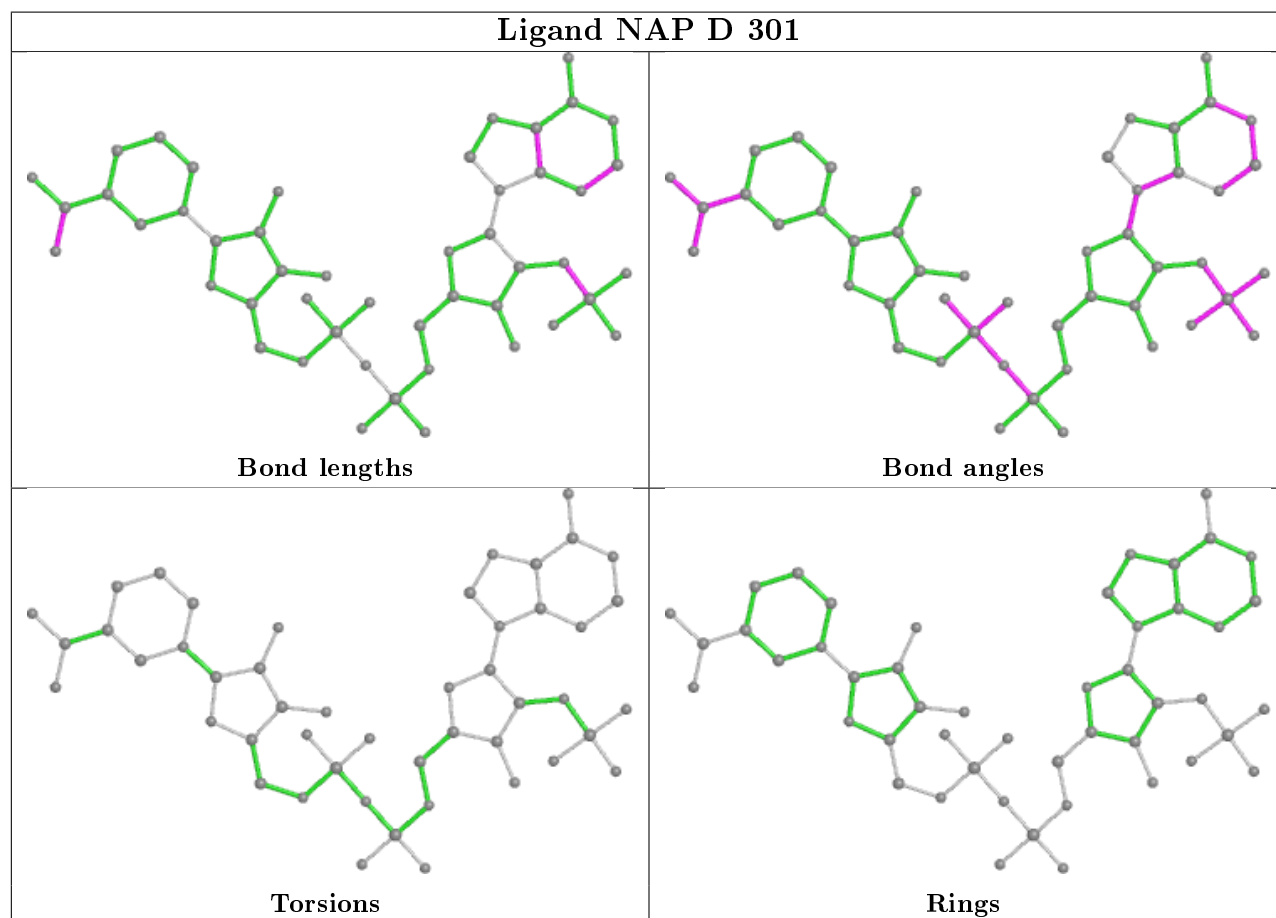
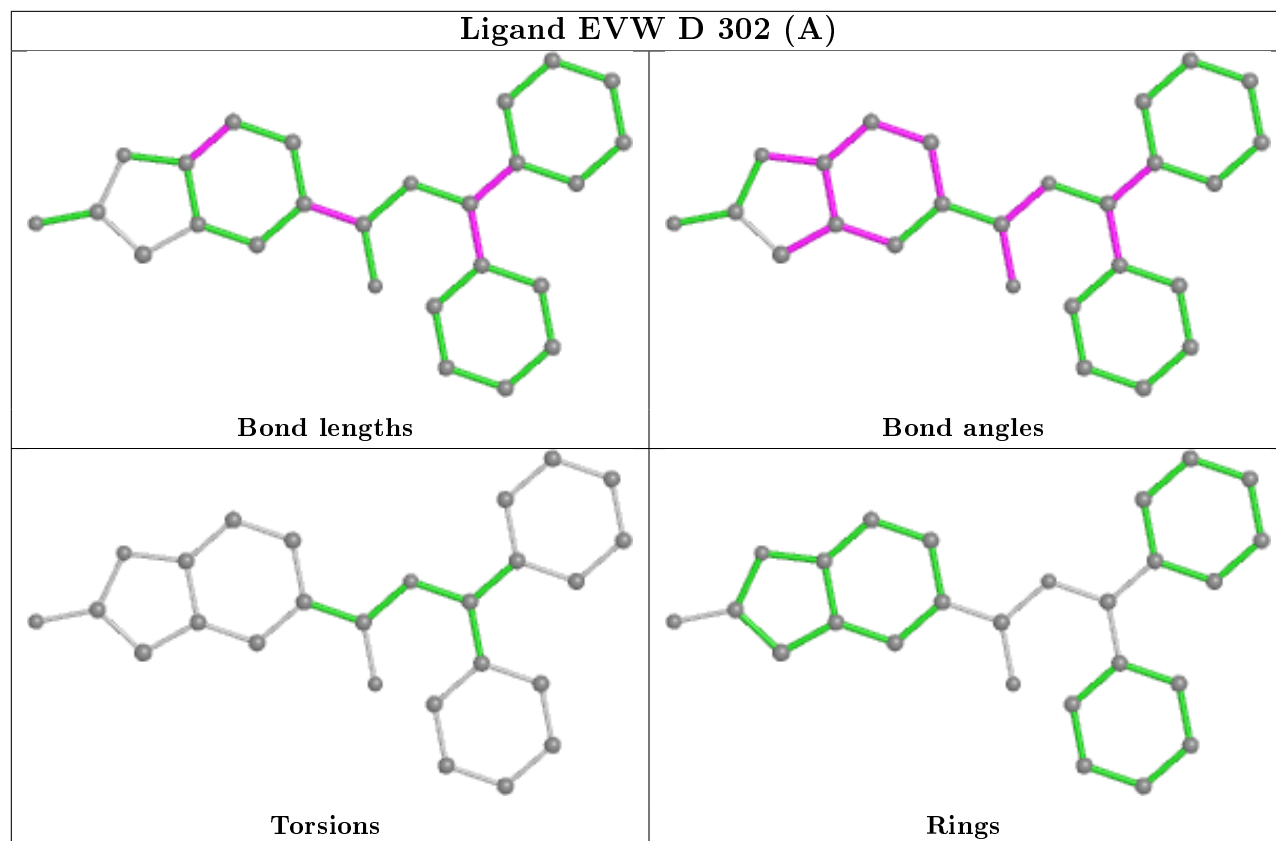
Mol	Chain	Res	Type	Atoms
5	D	303[B]	GOL	O1-C1-C2-O2
5	D	303[B]	GOL	O1-C1-C2-C3
5	D	303[B]	GOL	C1-C2-C3-O3
5	B	306	GOL	O1-C1-C2-C3
5	D	303[A]	GOL	O1-C1-C2-C3
5	B	305	GOL	O2-C2-C3-O3
5	B	305	GOL	C1-C2-C3-O3
5	D	303[B]	GOL	O2-C2-C3-O3
5	B	306	GOL	O1-C1-C2-O2
5	B	304[B]	GOL	O1-C1-C2-O2
5	D	303[A]	GOL	O1-C1-C2-O2
5	B	304[B]	GOL	O1-C1-C2-C3
3	B	302[A]	EVW	NAL-CAM-CAN-CAV
2	C	301	NAP	C5B-O5B-PA-O1A

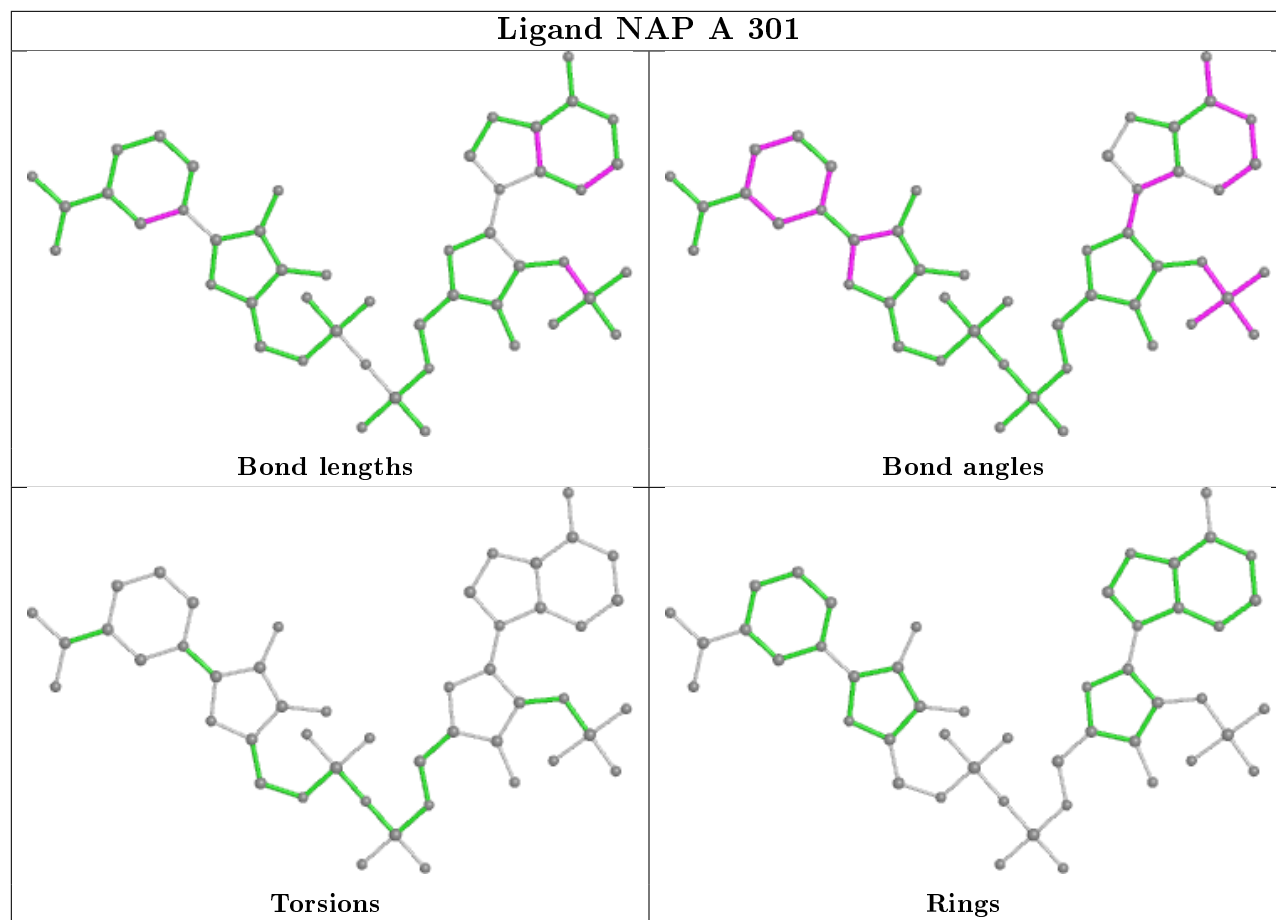
There are no ring outliers.

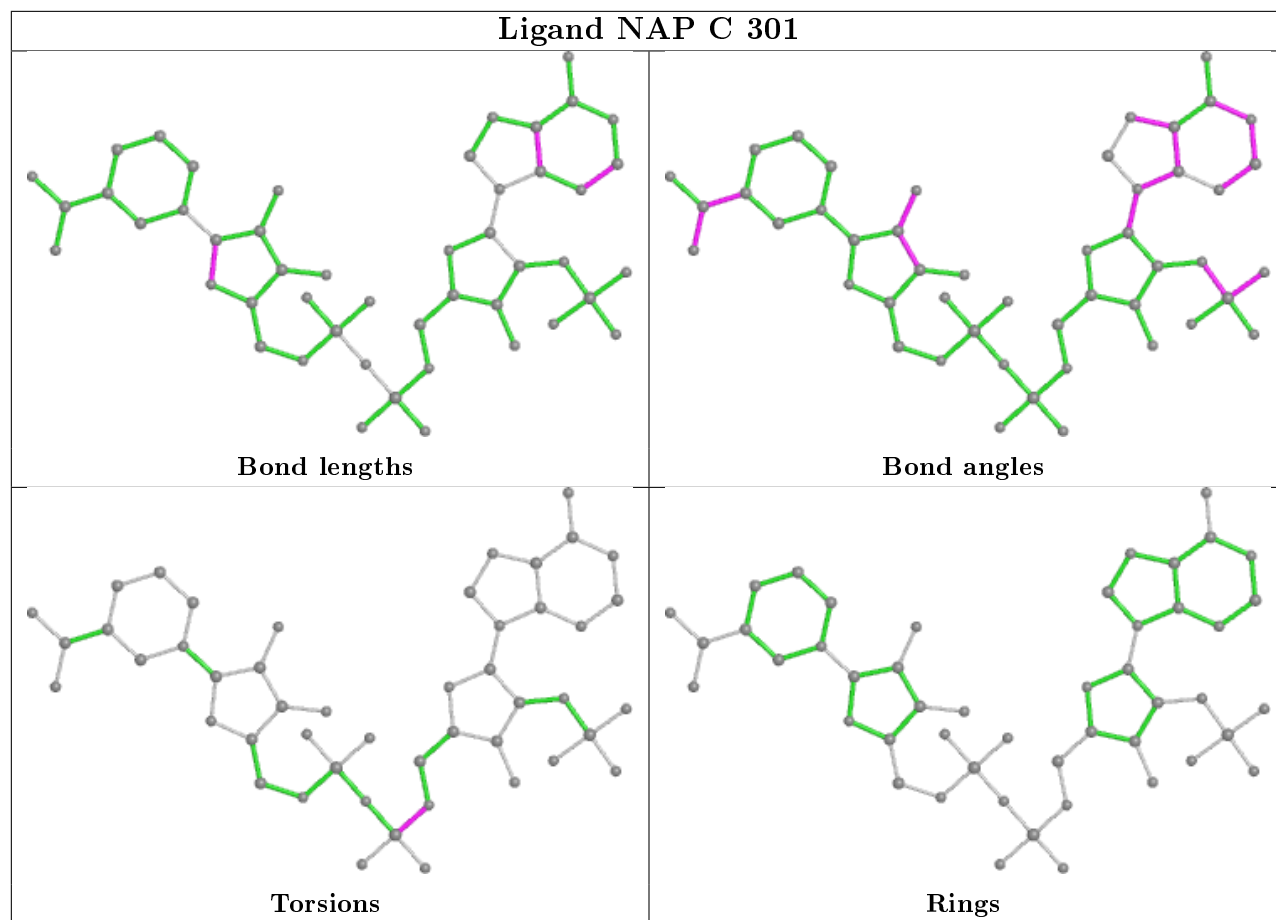
5 monomers are involved in 16 short contacts:

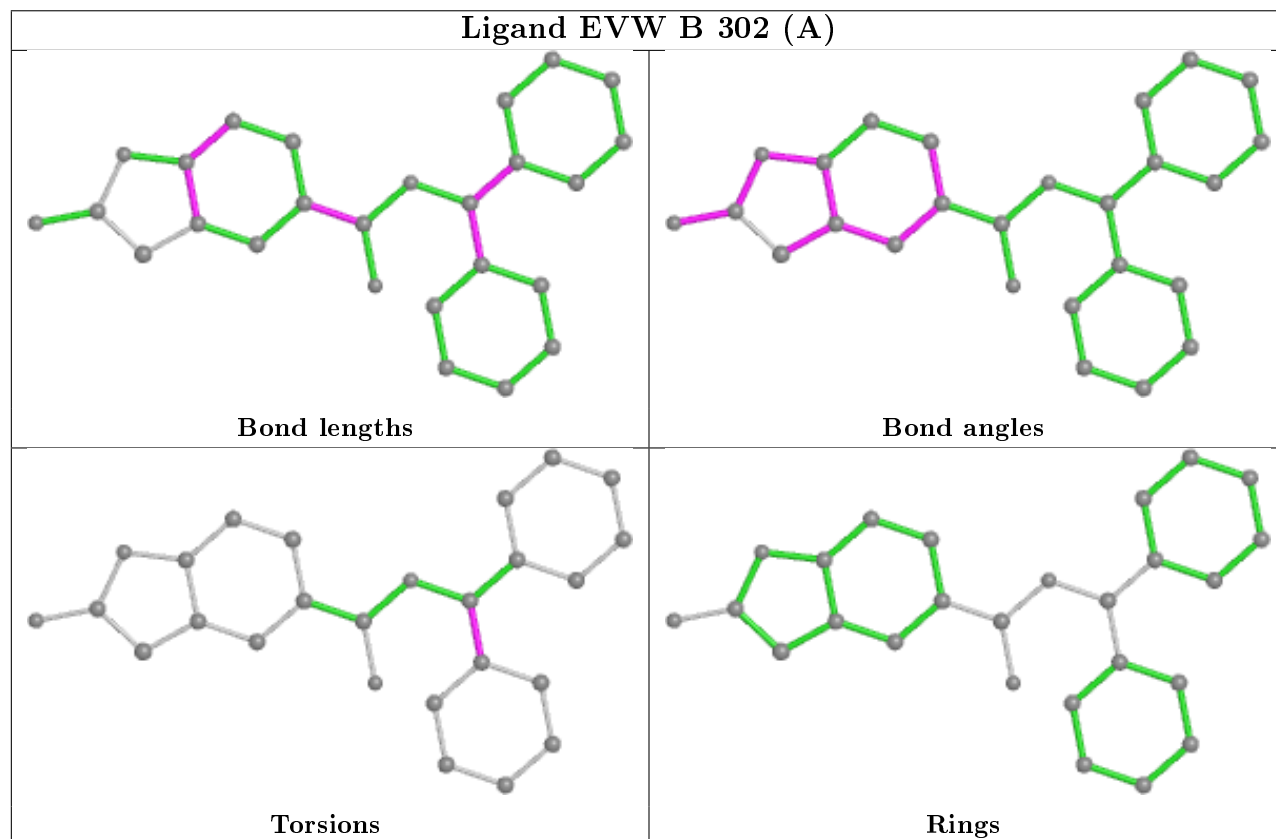
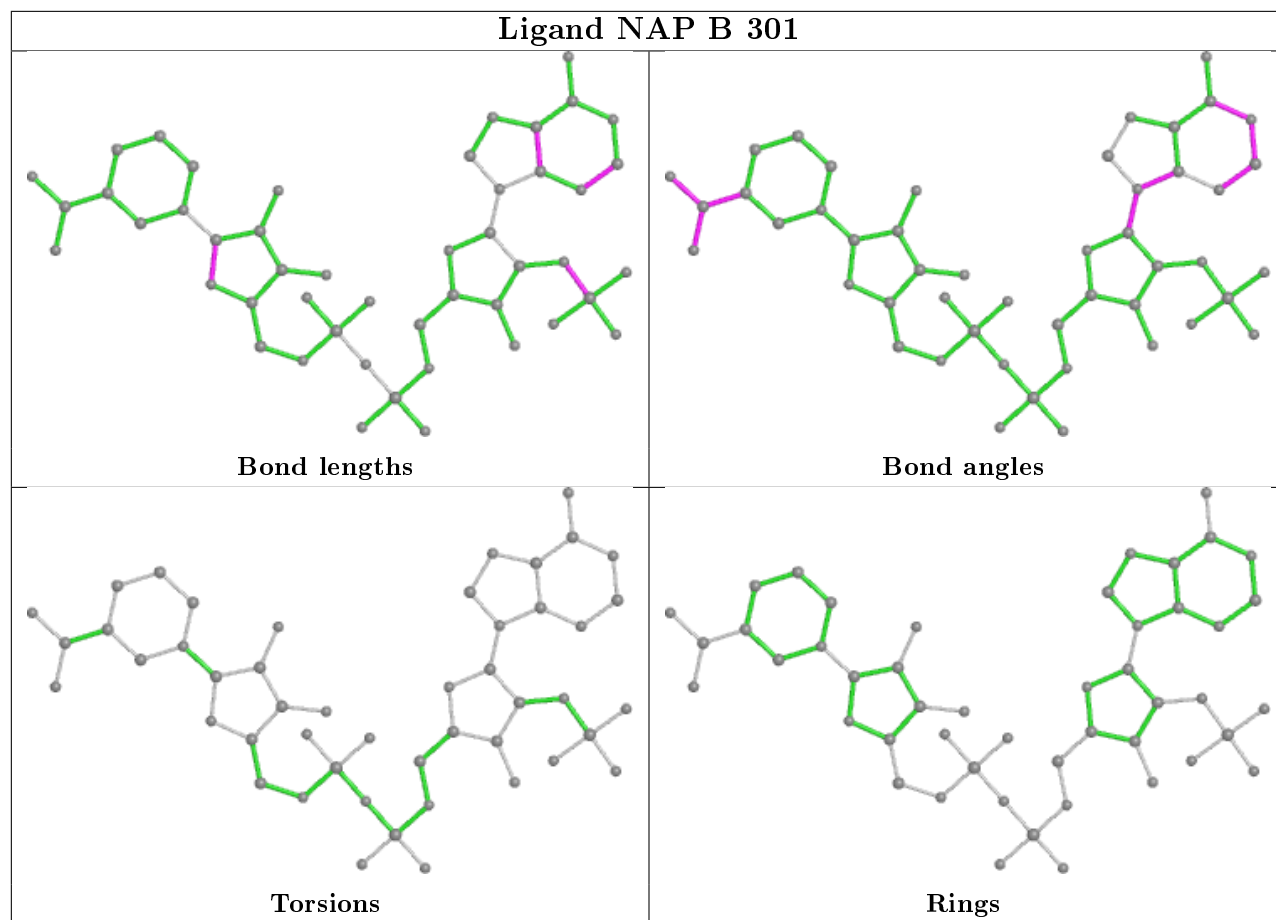
Mol	Chain	Res	Type	Clashes	Symm-Clashes
5	B	304[A]	GOL	5	0
2	D	301	NAP	2	0
2	C	301	NAP	3	0
5	B	306	GOL	5	0
2	B	301	NAP	1	0

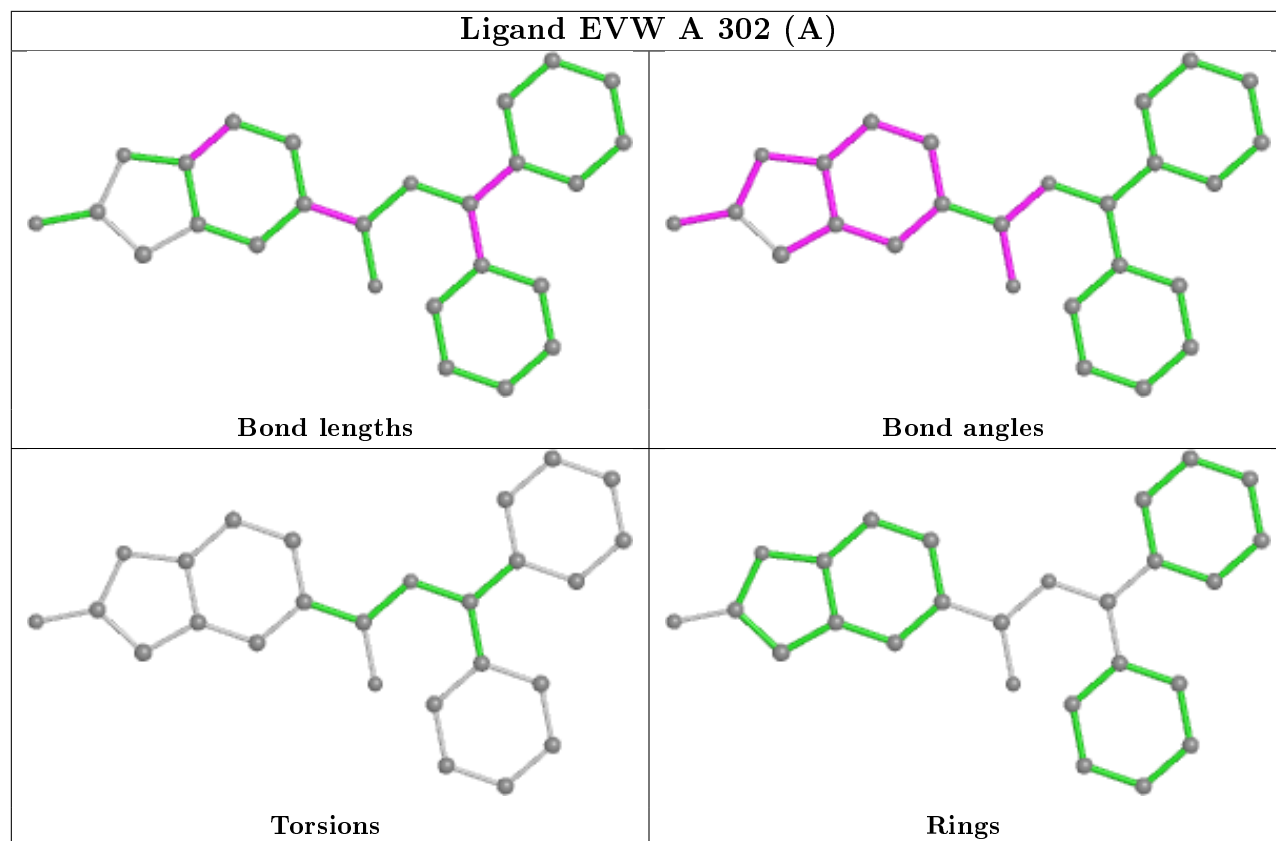
The following is a two-dimensional graphical depiction of Mogul quality analysis of bond lengths, bond angles, torsion angles, and ring geometry for all instances of the Ligand of Interest. In addition, ligands with molecular weight > 250 and outliers as shown on the validation Tables will also be included. For torsion angles, if less than 5% of the Mogul distribution of torsion angles is within 10 degrees of the torsion angle in question, then that torsion angle is considered an outlier. Any bond that is central to one or more torsion angles identified as an outlier by Mogul will be highlighted in the graph. For rings, the root-mean-square deviation (RMSD) between the ring in question and similar rings identified by Mogul is calculated over all ring torsion angles. If the average RMSD is greater than 60 degrees and the minimal RMSD between the ring in question and any Mogul-identified rings is also greater than 60 degrees, then that ring is considered an outlier. The outliers are highlighted in purple. The color gray indicates Mogul did not find sufficient equivalents in the CSD to analyse the geometry.











5.7 Other polymers [i](#)

There are no such residues in this entry.

5.8 Polymer linkage issues [i](#)

There are no chain breaks in this entry.

6 Fit of model and data [i](#)

6.1 Protein, DNA and RNA chains [i](#)

In the following table, the column labelled ‘#RSRZ> 2’ contains the number (and percentage) of RSRZ outliers, followed by percent RSRZ outliers for the chain as percentile scores relative to all X-ray entries and entries of similar resolution. The OWAB column contains the minimum, median, 95th percentile and maximum values of the occupancy-weighted average B-factor per residue. The column labelled ‘Q< 0.9’ lists the number of (and percentage) of residues with an average occupancy less than 0.9.

Mol	Chain	Analysed	<RSRZ>	#RSRZ>2	OWAB(Å ²)	Q<0.9
1	A	252/288 (87%)	-0.33	6 (2%) 59 63	9, 14, 29, 54	2 (0%)
1	B	253/288 (87%)	-0.36	6 (2%) 59 63	7, 12, 26, 46	0
1	C	251/288 (87%)	-0.14	9 (3%) 42 47	9, 16, 41, 57	3 (1%)
1	D	250/288 (86%)	-0.36	2 (0%) 86 88	8, 14, 30, 44	1 (0%)
All	All	1006/1152 (87%)	-0.30	23 (2%) 60 65	7, 14, 32, 57	6 (0%)

All (23) RSRZ outliers are listed below:

Mol	Chain	Res	Type	RSRZ
1	C	113	GLY	7.6
1	C	212	ALA	5.4
1	C	208	LEU	5.4
1	B	113	GLY	4.3
1	C	211	VAL	4.2
1	A	1	MET	3.7
1	B	211	VAL	3.5
1	C	209	LEU	3.4
1	C	206	VAL	3.3
1	A	113	GLY	3.2
1	A	104	GLN	3.1
1	C	221	TRP	3.1
1	A	221[A]	TRP	2.9
1	B	104	GLN	2.8
1	C	151	SER	2.6
1	B	1	MET	2.6
1	D	211	VAL	2.5
1	D	113	GLY	2.5
1	A	143	LYS	2.4
1	C	232	ALA	2.4
1	B	151	SER	2.3

Continued on next page...

Continued from previous page...

Mol	Chain	Res	Type	RSRZ
1	A	212	ALA	2.3
1	B	212	ALA	2.2

6.2 Non-standard residues in protein, DNA, RNA chains [i](#)

There are no non-standard protein/DNA/RNA residues in this entry.

6.3 Carbohydrates [i](#)

There are no monosaccharides in this entry.

6.4 Ligands [i](#)

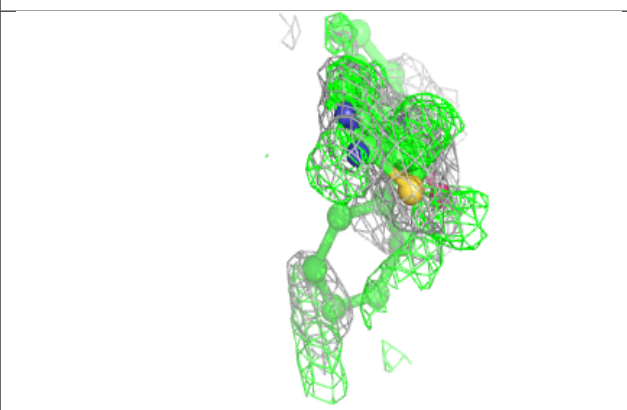
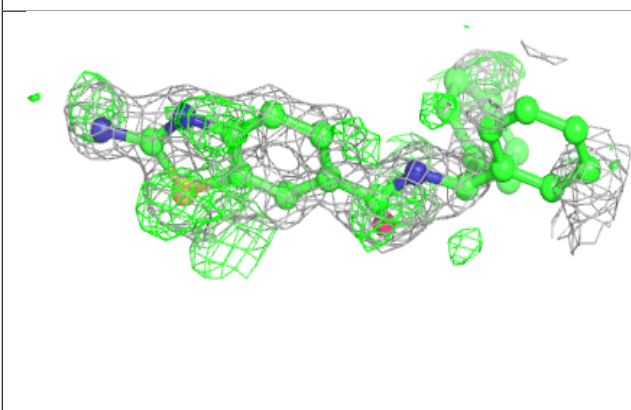
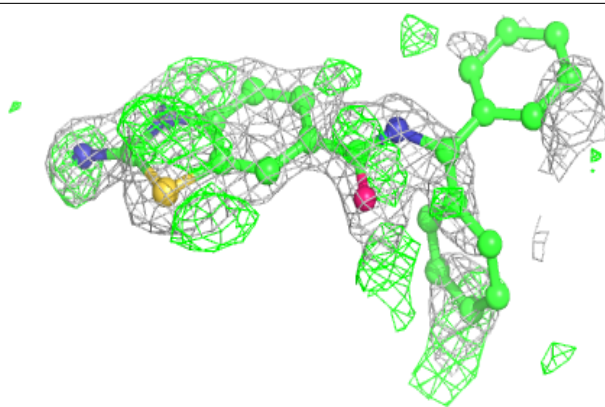
In the following table, the Atoms column lists the number of modelled atoms in the group and the number defined in the chemical component dictionary. The B-factors column lists the minimum, median, 95th percentile and maximum values of B factors of atoms in the group. The column labelled 'Q<0.9' lists the number of atoms with occupancy less than 0.9.

Mol	Type	Chain	Res	Atoms	RSCC	RSR	B-factors(Å ²)	Q<0.9
5	GOL	D	303[B]	6/6	0.74	0.23	25,31,32,33	6
5	GOL	D	303[A]	6/6	0.74	0.23	21,27,28,31	6
5	GOL	B	306	6/6	0.79	0.21	29,32,35,38	0
3	EVW	A	302[A]	26/26	0.82	0.25	13,25,30,31	26
5	GOL	B	304[B]	6/6	0.83	0.15	18,20,21,25	6
5	GOL	B	304[A]	6/6	0.83	0.15	14,20,22,23	6
2	NAP	C	301	48/48	0.85	0.15	14,19,23,24	48
5	GOL	A	304	6/6	0.85	0.11	32,37,39,42	0
3	EVW	D	302[A]	26/26	0.86	0.21	13,25,32,33	26
3	EVW	B	302[A]	26/26	0.89	0.21	9,18,26,27	26
5	GOL	B	305	6/6	0.92	0.14	23,35,40,43	0
4	ACT	A	303	4/4	0.96	0.07	17,17,18,18	0
2	NAP	A	301	48/48	0.97	0.07	12,14,16,17	0
2	NAP	D	301	48/48	0.97	0.08	12,16,18,20	0
4	ACT	B	303	4/4	0.98	0.07	18,19,19,21	0
2	NAP	B	301	48/48	0.98	0.08	11,13,16,17	0

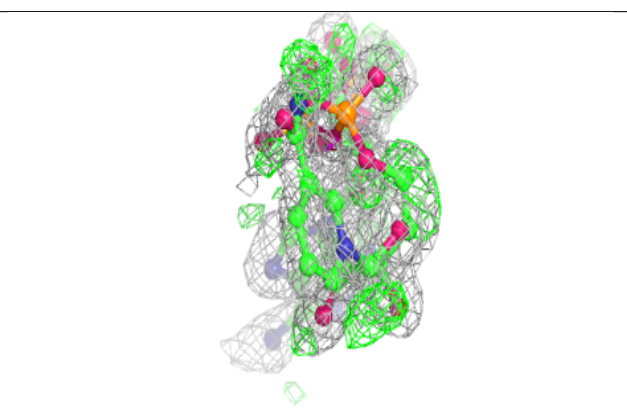
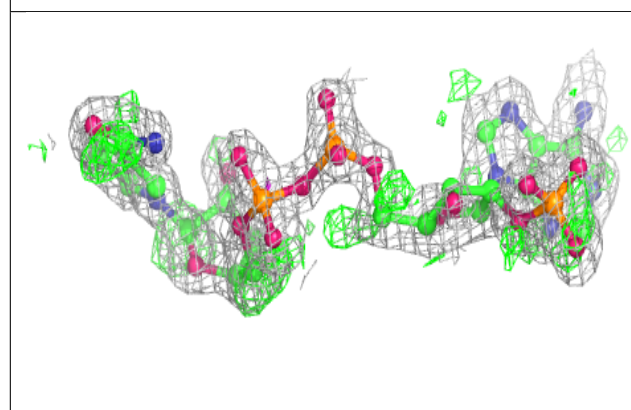
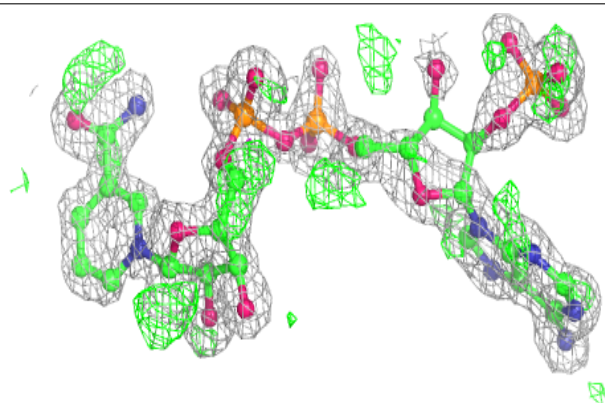
The following is a graphical depiction of the model fit to experimental electron density of all instances of the Ligand of Interest. In addition, ligands with molecular weight > 250 and outliers as shown on the geometry validation Tables will also be included. Each fit is shown from different orientation to approximate a three-dimensional view.

Electron density around EVW A 302 (A):

$2mF_o-DF_c$ (at 0.7 rmsd) in gray
 mF_o-DF_c (at 3 rmsd) in purple (negative)
and green (positive)

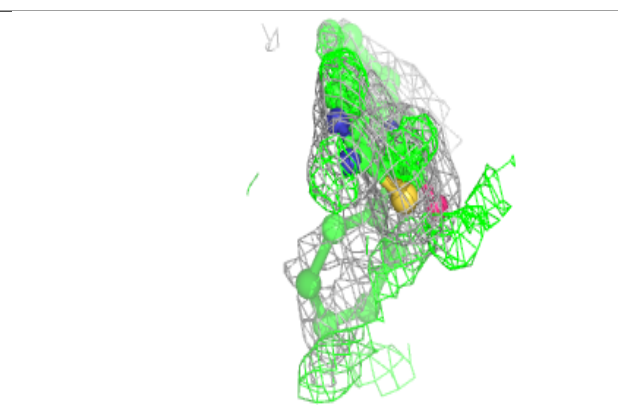
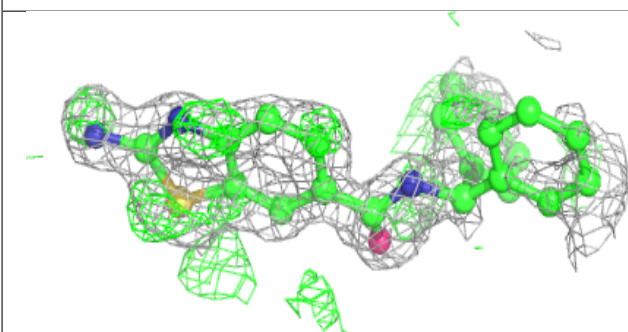
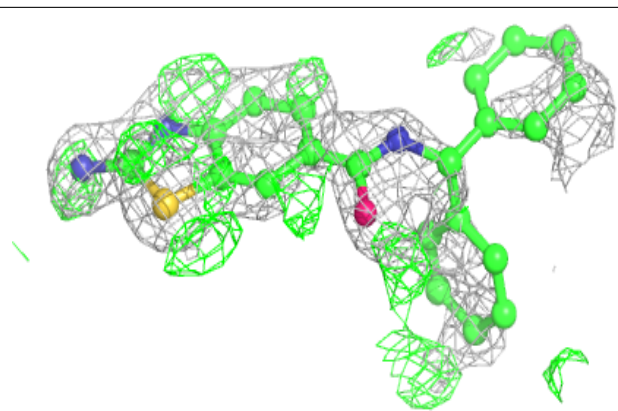
**Electron density around NAP C 301:**

$2mF_o-DF_c$ (at 0.7 rmsd) in gray
 mF_o-DF_c (at 3 rmsd) in purple (negative)
and green (positive)

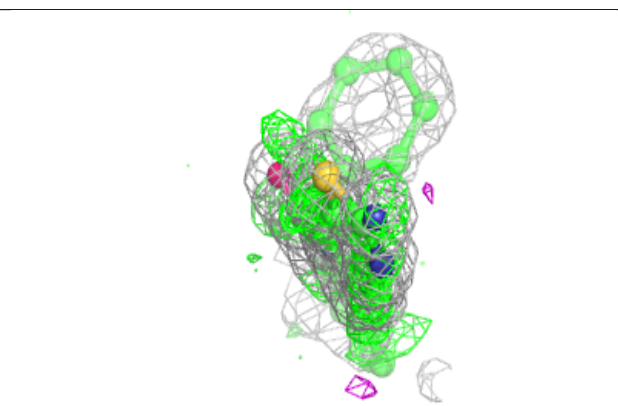
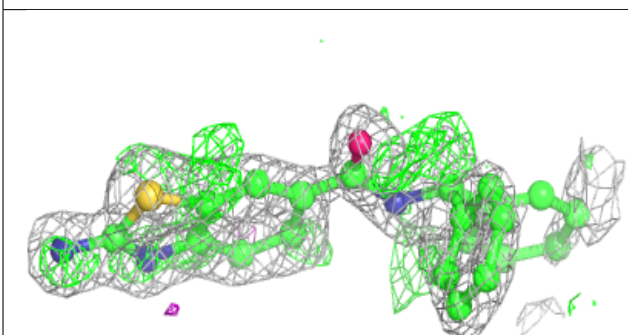
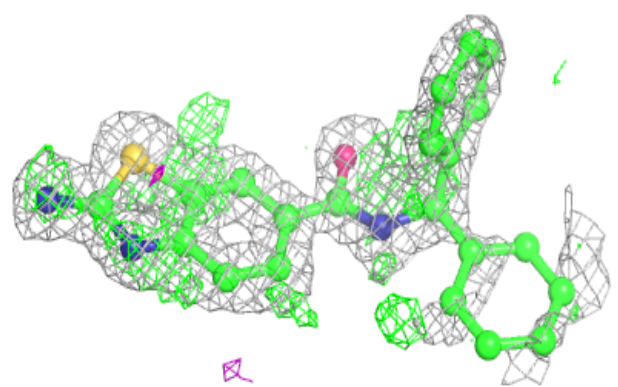


Electron density around EVW D 302 (A):

$2mF_o-DF_c$ (at 0.7 rmsd) in gray
 mF_o-DF_c (at 3 rmsd) in purple (negative)
and green (positive)

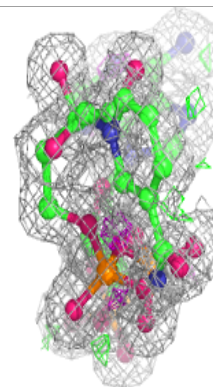
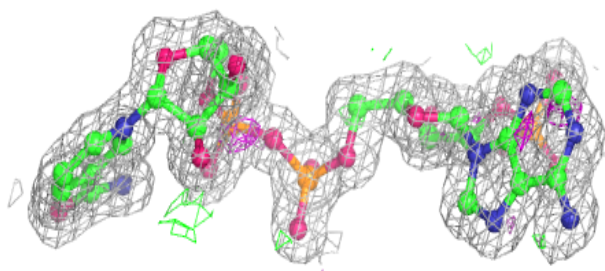
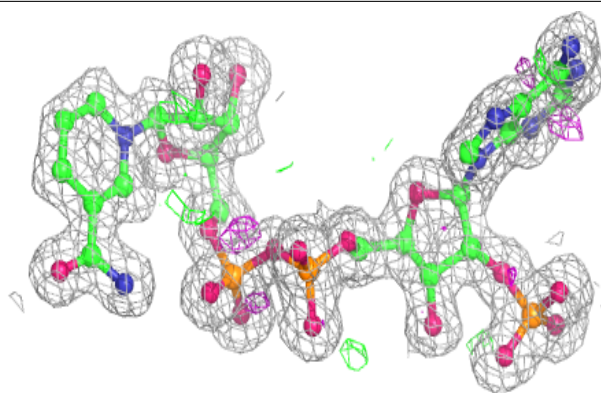
**Electron density around EVW B 302 (A):**

$2mF_o-DF_c$ (at 0.7 rmsd) in gray
 mF_o-DF_c (at 3 rmsd) in purple (negative)
and green (positive)

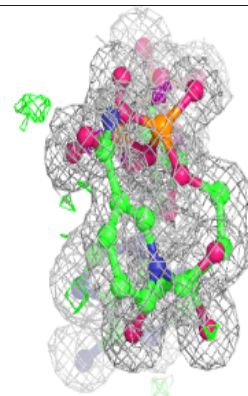
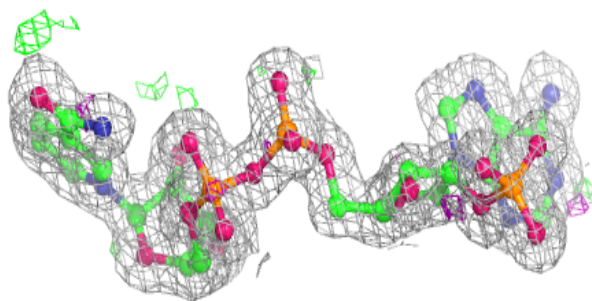
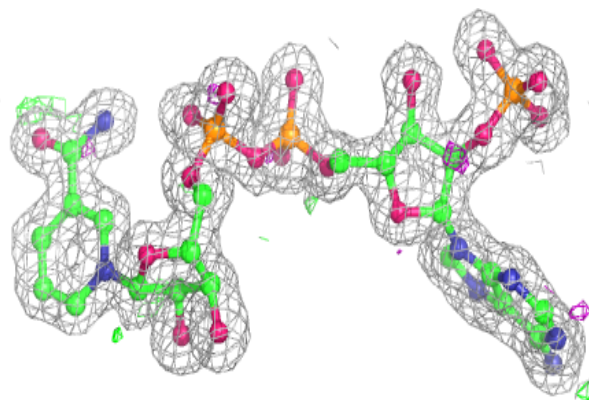


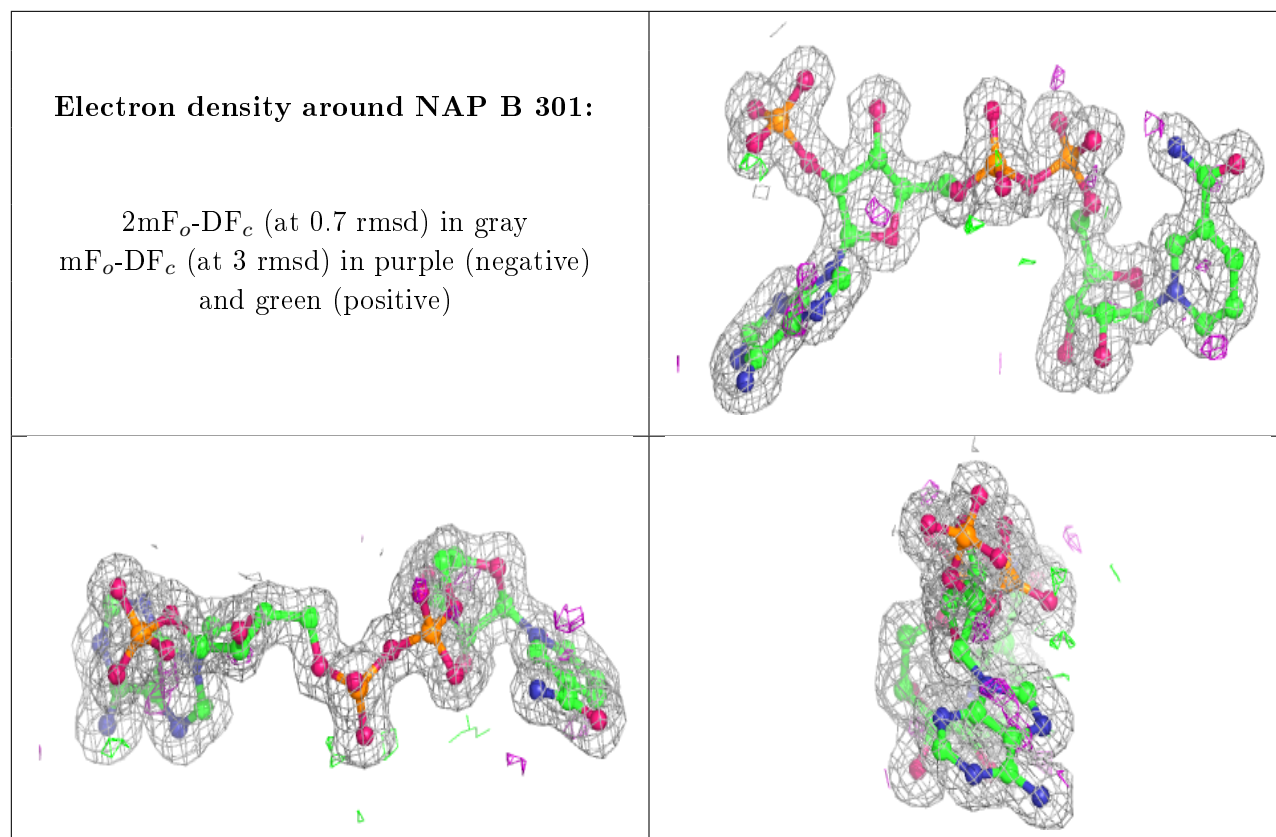
Electron density around NAP A 301:

$2mF_o-DF_c$ (at 0.7 rmsd) in gray
 mF_o-DF_c (at 3 rmsd) in purple (negative)
and green (positive)

**Electron density around NAP D 301:**

$2mF_o-DF_c$ (at 0.7 rmsd) in gray
 mF_o-DF_c (at 3 rmsd) in purple (negative)
and green (positive)





6.5 Other polymers [i](#)

There are no such residues in this entry.