



Full wwPDB X-ray Structure Validation Report ⓘ

Aug 27, 2023 – 03:54 AM EDT

PDB ID : 3GCU
Title : Human P38 MAP kinase in complex with RL48
Authors : Gruetter, C.; Simard, J.R.; Getlik, M.; Rauh, D.
Deposited on : 2009-02-22
Resolution : 2.10 Å(reported)

This is a Full wwPDB X-ray Structure Validation Report for a publicly released PDB entry.

We welcome your comments at validation@mail.wwpdb.org

A user guide is available at

<https://www.wwpdb.org/validation/2017/XrayValidationReportHelp>

with specific help available everywhere you see the ⓘ symbol.

The types of validation reports are described at

<http://www.wwpdb.org/validation/2017/FAQs#types>.

The following versions of software and data (see [references ⓘ](#)) were used in the production of this report:

MolProbity : 4.02b-467
Mogul : 1.8.5 (274361), CSD as541be (2020)
Xtriage (Phenix) : 1.13
EDS : 2.35
buster-report : 1.1.7 (2018)
Percentile statistics : 20191225.v01 (using entries in the PDB archive December 25th 2019)
Refmac : 5.8.0158
CCP4 : 7.0.044 (Gargrove)
Ideal geometry (proteins) : Engh & Huber (2001)
Ideal geometry (DNA, RNA) : Parkinson et al. (1996)
Validation Pipeline (wwPDB-VP) : 2.35

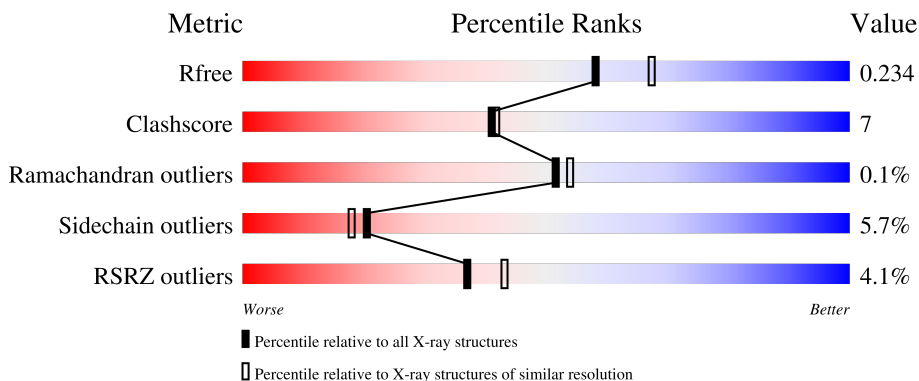
1 Overall quality at a glance

The following experimental techniques were used to determine the structure:

X-RAY DIFFRACTION

The reported resolution of this entry is 2.10 Å.

Percentile scores (ranging between 0-100) for global validation metrics of the entry are shown in the following graphic. The table shows the number of entries on which the scores are based.



Metric	Whole archive (#Entries)	Similar resolution (#Entries, resolution range(Å))
R_{free}	130704	5197 (2.10-2.10)
Clashscore	141614	5710 (2.10-2.10)
Ramachandran outliers	138981	5647 (2.10-2.10)
Sidechain outliers	138945	5648 (2.10-2.10)
RSRZ outliers	127900	5083 (2.10-2.10)

The table below summarises the geometric issues observed across the polymeric chains and their fit to the electron density. The red, orange, yellow and green segments of the lower bar indicate the fraction of residues that contain outliers for ≥ 3 , 2, 1 and 0 types of geometric quality criteria respectively. A grey segment represents the fraction of residues that are not modelled. The numeric value for each fraction is indicated below the corresponding segment, with a dot representing fractions $\leq 5\%$. The upper red bar (where present) indicates the fraction of residues that have poor fit to the electron density. The numeric value is given above the bar.

Mol	Chain	Length	Quality of chain
1	A	360	 3% 80% 13% • 6%
1	B	360	 4% 77% 15% • 6%

2 Entry composition i

There are 5 unique types of molecules in this entry. The entry contains 5897 atoms, of which 0 are hydrogens and 0 are deuteriums.

In the tables below, the ZeroOcc column contains the number of atoms modelled with zero occupancy, the AltConf column contains the number of residues with at least one atom in alternate conformation and the Trace column contains the number of residues modelled with at most 2 atoms.

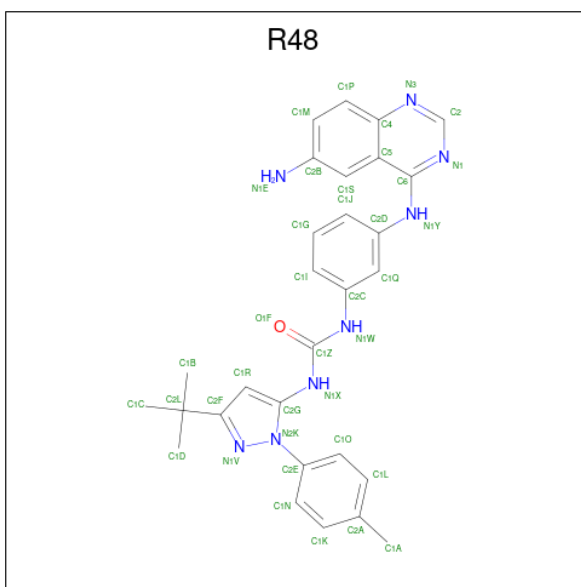
- Molecule 1 is a protein called Mitogen-activated protein kinase 14.

Mol	Chain	Residues	Atoms					ZeroOcc	AltConf	Trace
			Total	C	N	O	S			
1	A	339	Total 2720	C 1745	N 463	O 500	S 12	0	1	0
1	B	337	Total 2715	C 1743	N 463	O 496	S 13	0	2	0

There are 2 discrepancies between the modelled and reference sequences:

Chain	Residue	Modelled	Actual	Comment	Reference
A	1	GLY	-	expression tag	UNP Q16539
B	1	GLY	-	expression tag	UNP Q16539

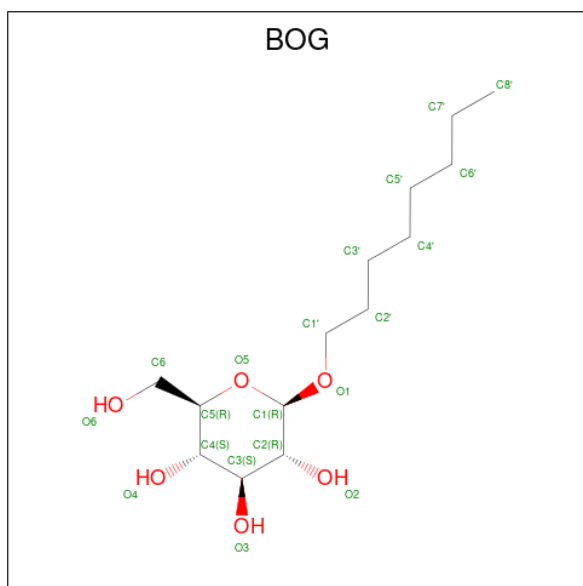
- Molecule 2 is 1-{3-[(6-aminoquinazolin-4-yl)amino]phenyl}-3-[3-tert-butyl-1-(4-methylphenyl)-1H-pyrazol-5-yl]urea (three-letter code: R48) (formula: C₂₉H₃₀N₈O).



Continued from previous page...

Mol	Chain	Residues	Atoms				ZeroOcc	AltConf
			Total	C	N	O		
2	B	1	38	29	8	1	0	0

- Molecule 3 is octyl beta-D-glucopyranoside (three-letter code: BOG) (formula: C₁₄H₂₈O₆).



Mol	Chain	Residues	Atoms			ZeroOcc	AltConf
			Total	C	O		
3	A	1	20	14	6	0	0
3	A	1	20	14	6	0	0
3	B	1	20	14	6	0	0
3	B	1	20	14	6	0	0

- Molecule 4 is 2-(N-MORPHOLINO)-ETHANESULFONIC ACID (three-letter code: MES) (formula: C₆H₁₃NO₄S).



Mol	Chain	Residues	Atoms					ZeroOcc	AltConf
			Total	C	N	O	S		
4	A	1	12	6	1	4	1	0	0

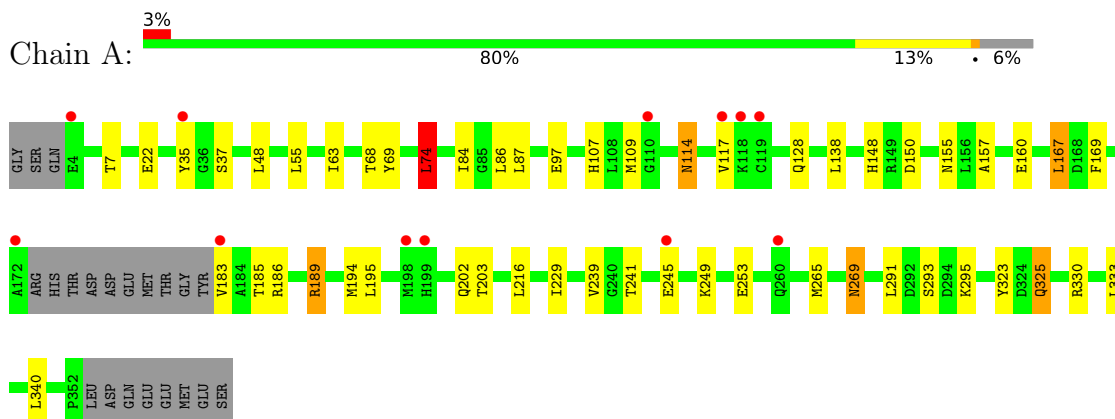
- Molecule 5 is water.

Mol	Chain	Residues	Atoms		ZeroOcc	AltConf
5	A	161	Total	O	0	0
			161	161		
5	B	133	Total	O	0	0
			133	133		

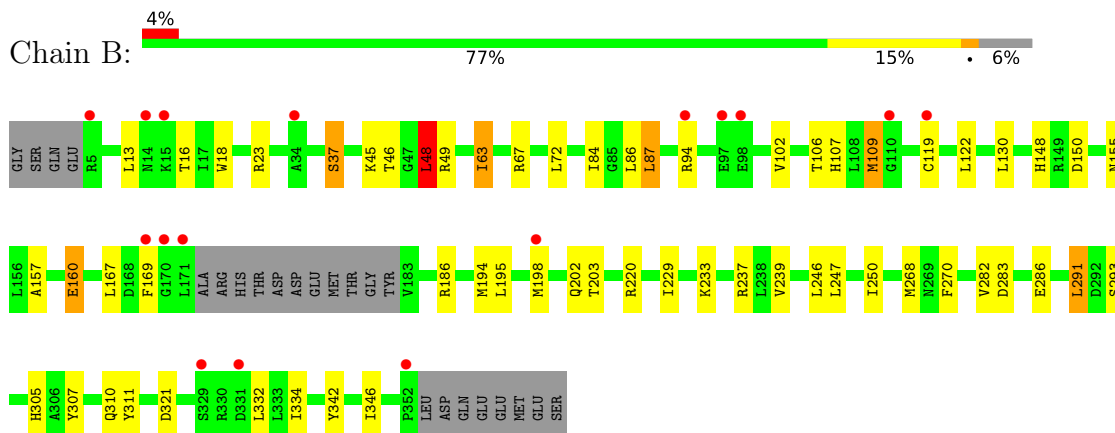
3 Residue-property plots

These plots are drawn for all protein, RNA, DNA and oligosaccharide chains in the entry. The first graphic for a chain summarises the proportions of the various outlier classes displayed in the second graphic. The second graphic shows the sequence view annotated by issues in geometry and electron density. Residues are color-coded according to the number of geometric quality criteria for which they contain at least one outlier: green = 0, yellow = 1, orange = 2 and red = 3 or more. A red dot above a residue indicates a poor fit to the electron density ($RSRZ > 2$). Stretches of 2 or more consecutive residues without any outlier are shown as a green connector. Residues present in the sample, but not in the model, are shown in grey.

- Molecule 1: Mitogen-activated protein kinase 14



- Molecule 1: Mitogen-activated protein kinase 14



4 Data and refinement statistics

Property	Value	Source
Space group	P 1 21 1	Depositor
Cell constants a, b, c, α , β , γ	70.47Å 74.09Å 71.71Å 90.00° 93.76° 90.00°	Depositor
Resolution (Å)	32.41 – 2.10 32.41 – 2.10	Depositor EDS
% Data completeness (in resolution range)	100.0 (32.41-2.10) 99.8 (32.41-2.10)	Depositor EDS
R_{merge}	0.04	Depositor
R_{sym}	(Not available)	Depositor
$\langle I/\sigma(I) \rangle$ ¹	6.26 (at 2.10Å)	Xtrriage
Refinement program	REFMAC	Depositor
R, R_{free}	0.189 , 0.235 0.189 , 0.234	Depositor DCC
R_{free} test set	1077 reflections (2.50%)	wwPDB-VP
Wilson B-factor (Å ²)	28.7	Xtrriage
Anisotropy	0.245	Xtrriage
Bulk solvent k_{sol} (e/Å ³), B_{sol} (Å ²)	0.35 , 50.2	EDS
L-test for twinning ²	$\langle L \rangle = 0.50$, $\langle L^2 \rangle = 0.33$	Xtrriage
Estimated twinning fraction	0.017 for l,-k,h	Xtrriage
F_o, F_c correlation	0.95	EDS
Total number of atoms	5897	wwPDB-VP
Average B, all atoms (Å ²)	30.0	wwPDB-VP

Xtrriage's analysis on translational NCS is as follows: *The largest off-origin peak in the Patterson function is 4.76% of the height of the origin peak. No significant pseudotranslation is detected.*

¹Intensities estimated from amplitudes.

²Theoretical values of $\langle |L| \rangle$, $\langle L^2 \rangle$ for acentric reflections are 0.5, 0.333 respectively for untwinned datasets, and 0.375, 0.2 for perfectly twinned datasets.

5 Model quality i

5.1 Standard geometry i

Bond lengths and bond angles in the following residue types are not validated in this section: BOG, R48, MES

The Z score for a bond length (or angle) is the number of standard deviations the observed value is removed from the expected value. A bond length (or angle) with $|Z| > 5$ is considered an outlier worth inspection. RMSZ is the root-mean-square of all Z scores of the bond lengths (or angles).

Mol	Chain	Bond lengths		Bond angles	
		RMSZ	# Z >5	RMSZ	# Z >5
1	A	0.65	0/2786	0.72	2/3787 (0.1%)
1	B	0.67	0/2783	0.75	3/3779 (0.1%)
All	All	0.66	0/5569	0.74	5/7566 (0.1%)

There are no bond length outliers.

All (5) bond angle outliers are listed below:

Mol	Chain	Res	Type	Atoms	Z	Observed(°)	Ideal(°)
1	A	74	LEU	CA-CB-CG	6.19	129.53	115.30
1	B	268	MET	CG-SD-CE	5.57	109.11	100.20
1	B	48	LEU	CA-CB-CG	5.54	128.05	115.30
1	B	220	ARG	NE-CZ-NH1	5.44	123.02	120.30
1	A	330	ARG	NE-CZ-NH2	-5.16	117.72	120.30

There are no chirality outliers.

There are no planarity outliers.

5.2 Too-close contacts i

In the following table, the Non-H and H(model) columns list the number of non-hydrogen atoms and hydrogen atoms in the chain respectively. The H(added) column lists the number of hydrogen atoms added and optimized by MolProbity. The Clashes column lists the number of clashes within the asymmetric unit, whereas Symm-Clashes lists symmetry-related clashes.

Mol	Chain	Non-H	H(model)	H(added)	Clashes	Symm-Clashes
1	A	2720	0	2704	33	0
1	B	2715	0	2718	47	0
2	A	38	0	30	3	0
2	B	38	0	30	0	0

Continued on next page...

Continued from previous page...

Mol	Chain	Non-H	H(model)	H(added)	Clashes	Symm-Clashes
3	A	40	0	56	1	0
3	B	40	0	56	3	0
4	A	12	0	12	0	0
5	A	161	0	0	6	0
5	B	133	0	0	1	0
All	All	5897	0	5606	79	0

The all-atom clashscore is defined as the number of clashes found per 1000 atoms (including hydrogen atoms). The all-atom clashscore for this structure is 7.

All (79) close contacts within the same asymmetric unit are listed below, sorted by their clash magnitude.

Atom-1	Atom-2	Interatomic distance (Å)	Clash overlap (Å)
1:B:109[B]:MET:SD	1:B:169:PHE:CZ	2.78	0.77
1:A:148:HIS:HD2	1:A:150:ASP:H	1.30	0.77
1:B:342:TYR:CE2	1:B:346:ILE:HD11	2.22	0.75
1:B:202:GLN:NE2	5:B:587:HOH:O	2.21	0.73
1:B:203:THR:OG1	1:B:293:SER:HB2	1.92	0.69
1:B:109[B]:MET:HE2	1:B:157:ALA:HA	1.75	0.68
1:B:109[B]:MET:SD	1:B:169:PHE:HZ	2.18	0.66
1:B:109[B]:MET:CE	1:B:169:PHE:CE2	2.78	0.66
1:B:305:HIS:HD2	1:B:307:TYR:H	1.43	0.65
1:A:74:LEU:HD23	2:A:401:R48:H1N	1.80	0.64
1:B:283:ASP:OD2	1:B:305:HIS:HE1	1.80	0.64
1:B:109[B]:MET:CE	1:B:169:PHE:CZ	2.81	0.63
1:B:239:VAL:HG21	1:B:291:LEU:HD13	1.80	0.63
1:A:185:THR:HG21	1:A:189:ARG:NH1	2.13	0.63
1:B:18:TRP:HZ2	1:B:37:SER:HB2	1.62	0.63
2:A:401:R48:N1E	5:A:467:HOH:O	2.27	0.62
1:A:186:ARG:HB2	1:A:194:MET:HE1	1.82	0.61
1:B:148:HIS:HD2	1:B:150:ASP:H	1.45	0.61
1:A:241:THR:HG23	1:A:265:MET:H	1.66	0.60
1:A:202:GLN:NE2	5:A:461:HOH:O	2.33	0.60
1:A:7:THR:O	1:A:22:GLU:HG3	2.02	0.59
1:B:305:HIS:CD2	1:B:307:TYR:H	2.20	0.59
1:A:239:VAL:HG21	1:A:291:LEU:HD13	1.85	0.58
1:A:202:GLN:HG2	5:A:611:HOH:O	2.04	0.56
1:A:148:HIS:CD2	1:A:150:ASP:H	2.19	0.56
1:A:48:LEU:HD13	1:A:107:HIS:CE1	2.41	0.56
1:A:155:ASN:ND2	1:A:169:PHE:H	2.03	0.56
1:B:155:ASN:ND2	1:B:169:PHE:H	2.04	0.55

Continued on next page...

Continued from previous page...

Atom-1	Atom-2	Interatomic distance (Å)	Clash overlap (Å)
1:A:323:TYR:CE2	1:A:325:GLN:HG3	2.40	0.55
1:B:155:ASN:HA	1:B:169:PHE:HD2	1.73	0.54
1:B:109[B]:MET:HE3	1:B:169:PHE:CE2	2.43	0.54
1:B:109[B]:MET:HE1	1:B:169:PHE:CE2	2.44	0.52
1:A:186:ARG:HB2	1:A:194:MET:CE	2.40	0.51
1:B:167:LEU:HD13	1:B:169:PHE:CE2	2.45	0.51
1:A:269:ASN:C	1:A:269:ASN:HD22	2.13	0.51
1:A:148:HIS:HD2	1:A:150:ASP:N	2.05	0.50
1:A:128:GLN:NE2	5:A:554:HOH:O	2.43	0.50
1:A:148:HIS:HE1	1:A:167:LEU:O	1.95	0.50
1:A:203:THR:OG1	1:A:293:SER:HB2	2.12	0.49
1:B:310:GLN:HG3	1:B:311:TYR:CD1	2.47	0.49
1:B:247:LEU:HD13	1:B:250:ILE:HD12	1.95	0.49
1:B:18:TRP:CZ2	1:B:37:SER:HB2	2.45	0.48
1:B:195:LEU:HD22	3:B:403:BOG:H8'3	1.95	0.47
1:B:148:HIS:HE1	1:B:167:LEU:O	1.97	0.47
1:B:282:VAL:O	1:B:286:GLU:HG3	2.15	0.47
1:B:49:ARG:HH11	1:B:49:ARG:HG3	1.79	0.46
1:B:186:ARG:HB2	1:B:194:MET:HE1	1.97	0.46
1:A:35:TYR:HE1	5:A:519:HOH:O	1.99	0.46
1:B:109[B]:MET:HE3	1:B:157:ALA:HB2	1.96	0.46
1:A:295:LYS:HA	1:A:295:LYS:HD2	1.81	0.46
1:A:167:LEU:HA	2:A:401:R48:H1BA	1.98	0.46
1:B:229:ILE:HG21	3:B:403:BOG:H2	1.97	0.46
1:B:310:GLN:HG3	1:B:311:TYR:CE1	2.53	0.44
1:A:202:GLN:CG	5:A:611:HOH:O	2.62	0.44
1:A:249:LYS:O	3:A:403:BOG:H61	2.18	0.44
1:B:16:THR:HG23	1:B:18:TRP:HE1	1.82	0.44
1:B:46:THR:OG1	1:B:48:LEU:HD12	2.18	0.44
1:B:155:ASN:ND2	1:B:169:PHE:HB2	2.33	0.44
1:B:109[B]:MET:HE3	1:B:169:PHE:CZ	2.52	0.44
1:B:109[B]:MET:HG3	1:B:157:ALA:CB	2.48	0.43
1:A:117:VAL:HG22	1:A:216:LEU:CD2	2.49	0.43
1:B:195:LEU:HD12	3:B:402:BOG:H5'2	2.00	0.43
1:A:55:LEU:HD12	1:A:68:THR:HG23	2.00	0.43
1:A:109:MET:HB3	1:A:157:ALA:HB1	2.00	0.43
1:A:63:ILE:HG21	1:B:160:GLU:HB3	2.01	0.43
1:B:13:LEU:O	1:B:16:THR:HG22	2.20	0.42
1:B:342:TYR:CZ	1:B:346:ILE:HD11	2.54	0.42
1:B:87:LEU:HD11	1:B:107[A]:HIS:NE2	2.35	0.41
1:A:114:ASN:OD1	1:A:183:VAL:HG21	2.20	0.41

Continued on next page...

Continued from previous page...

Atom-1	Atom-2	Interatomic distance (Å)	Clash overlap (Å)
1:B:63:ILE:HD11	1:B:67:ARG:NH2	2.36	0.41
1:B:233:LYS:O	1:B:237:ARG:HD3	2.21	0.41
1:A:84:ILE:HB	1:A:167:LEU:HB3	2.02	0.41
1:B:84:ILE:HD11	1:B:106:THR:HB	2.02	0.41
1:B:321:ASP:C	1:B:321:ASP:OD2	2.59	0.41
1:A:48:LEU:HD13	1:A:107:HIS:HE1	1.85	0.40
1:A:69:TYR:CE2	1:A:340:LEU:HB3	2.56	0.40
1:B:109[B]:MET:HE2	1:B:157:ALA:CA	2.49	0.40
1:B:270:PHE:CD1	1:B:286:GLU:HG2	2.56	0.40
1:A:229:ILE:HG12	1:B:45:LYS:HA	2.02	0.40

There are no symmetry-related clashes.

5.3 Torsion angles [i](#)

5.3.1 Protein backbone [i](#)

In the following table, the Percentiles column shows the percent Ramachandran outliers of the chain as a percentile score with respect to all X-ray entries followed by that with respect to entries of similar resolution.

The Analysed column shows the number of residues for which the backbone conformation was analysed, and the total number of residues.

Mol	Chain	Analysed	Favoured	Allowed	Outliers	Percentiles	
1	A	336/360 (93%)	327 (97%)	9 (3%)	0	100	100
1	B	335/360 (93%)	324 (97%)	10 (3%)	1 (0%)	41	41
All	All	671/720 (93%)	651 (97%)	19 (3%)	1 (0%)	51	54

All (1) Ramachandran outliers are listed below:

Mol	Chain	Res	Type
1	B	334	ILE

5.3.2 Protein sidechains [i](#)

In the following table, the Percentiles column shows the percent sidechain outliers of the chain as a percentile score with respect to all X-ray entries followed by that with respect to entries of similar resolution.

The Analysed column shows the number of residues for which the sidechain conformation was analysed, and the total number of residues.

Mol	Chain	Analysed	Rotameric	Outliers	Percentiles	
1	A	297/319 (93%)	281 (95%)	16 (5%)	22	20
1	B	298/319 (93%)	279 (94%)	19 (6%)	17	14
All	All	595/638 (93%)	560 (94%)	35 (6%)	20	17

All (35) residues with a non-rotameric sidechain are listed below:

Mol	Chain	Res	Type
1	A	37	SER
1	A	74	LEU
1	A	86	LEU
1	A	87	LEU
1	A	97	GLU
1	A	114	ASN
1	A	138	LEU
1	A	160	GLU
1	A	167	LEU
1	A	189	ARG
1	A	195	LEU
1	A	245	GLU
1	A	253	GLU
1	A	269	ASN
1	A	325	GLN
1	A	333	LEU
1	B	23	ARG
1	B	37	SER
1	B	48	LEU
1	B	63	ILE
1	B	72	LEU
1	B	86	LEU
1	B	87	LEU
1	B	94	ARG
1	B	102	VAL
1	B	109[A]	MET
1	B	109[B]	MET
1	B	119	CYS
1	B	122	LEU
1	B	130	LEU
1	B	160	GLU
1	B	198	MET
1	B	246	LEU

Continued on next page...

Continued from previous page...

Mol	Chain	Res	Type
1	B	291	LEU
1	B	332	LEU

Sometimes sidechains can be flipped to improve hydrogen bonding and reduce clashes. All (15) such sidechains are listed below:

Mol	Chain	Res	Type
1	A	14	ASN
1	A	128	GLN
1	A	148	HIS
1	A	155	ASN
1	A	257	ASN
1	A	264	GLN
1	A	269	ASN
1	B	114	ASN
1	B	120	GLN
1	B	128	GLN
1	B	148	HIS
1	B	155	ASN
1	B	305	HIS
1	B	310	GLN
1	B	325	GLN

5.3.3 RNA [i](#)

There are no RNA molecules in this entry.

5.4 Non-standard residues in protein, DNA, RNA chains [i](#)

There are no non-standard protein/DNA/RNA residues in this entry.

5.5 Carbohydrates [i](#)

There are no monosaccharides in this entry.

5.6 Ligand geometry [i](#)

7 ligands are modelled in this entry.

In the following table, the Counts columns list the number of bonds (or angles) for which Mogul statistics could be retrieved, the number of bonds (or angles) that are observed in the model and the number of bonds (or angles) that are defined in the Chemical Component Dictionary. The Link column lists molecule types, if any, to which the group is linked. The Z score for a bond length (or angle) is the number of standard deviations the observed value is removed from the expected value. A bond length (or angle) with $|Z| > 2$ is considered an outlier worth inspection. RMSZ is the root-mean-square of all Z scores of the bond lengths (or angles).

Mol	Type	Chain	Res	Link	Bond lengths			Bond angles		
					Counts	RMSZ	# Z > 2	Counts	RMSZ	# Z > 2
3	BOG	B	403	-	20,20,20	0.96	1 (5%)	25,25,25	1.71	7 (28%)
4	MES	A	404	-	12,12,12	1.95	2 (16%)	14,16,16	2.85	6 (42%)
3	BOG	B	402	-	20,20,20	0.87	1 (5%)	25,25,25	1.59	4 (16%)
2	R48	B	401	-	39,42,42	1.30	7 (17%)	51,61,61	1.99	12 (23%)
2	R48	A	401	-	39,42,42	1.38	8 (20%)	51,61,61	2.07	14 (27%)
3	BOG	A	403	-	20,20,20	0.97	2 (10%)	25,25,25	1.01	1 (4%)
3	BOG	A	402	-	20,20,20	0.71	0	25,25,25	0.89	1 (4%)

In the following table, the Chirals column lists the number of chiral outliers, the number of chiral centers analysed, the number of these observed in the model and the number defined in the Chemical Component Dictionary. Similar counts are reported in the Torsion and Rings columns. '-' means no outliers of that kind were identified.

Mol	Type	Chain	Res	Link	Chirals	Torsions	Rings
3	BOG	B	403	-	-	8/11/31/31	0/1/1/1
4	MES	A	404	-	-	2/6/14/14	0/1/1/1
3	BOG	B	402	-	-	2/11/31/31	0/1/1/1
2	R48	B	401	-	-	2/16/22/22	0/5/5/5
2	R48	A	401	-	-	2/16/22/22	0/5/5/5
3	BOG	A	403	-	-	6/11/31/31	0/1/1/1
3	BOG	A	402	-	-	3/11/31/31	0/1/1/1

All (21) bond length outliers are listed below:

Mol	Chain	Res	Type	Atoms	Z	Observed(Å)	Ideal(Å)
4	A	404	MES	C8-S	-5.98	1.69	1.77
2	A	401	R48	C2C-N1W	-3.18	1.35	1.41
3	B	403	BOG	O1-C1	3.06	1.45	1.40
2	B	401	R48	C1O-C1L	2.89	1.42	1.36
2	B	401	R48	C6-C5	-2.75	1.41	1.44
2	B	401	R48	C1P-C1M	2.74	1.42	1.36

Continued on next page...

Continued from previous page...

Mol	Chain	Res	Type	Atoms	Z	Observed(Å)	Ideal(Å)
3	A	403	BOG	O1-C1	2.65	1.44	1.40
4	A	404	MES	O1S-S	2.63	1.52	1.45
2	A	401	R48	C2L-C2F	2.63	1.56	1.52
2	A	401	R48	C6-C5	-2.60	1.41	1.44
2	A	401	R48	C1R-C2F	-2.38	1.36	1.39
2	B	401	R48	C2D-N1Y	-2.37	1.35	1.40
2	A	401	R48	C1O-C1L	2.27	1.41	1.36
2	A	401	R48	C6-N1	2.19	1.37	1.34
2	A	401	R48	C1P-C1M	2.17	1.41	1.36
2	B	401	R48	C2G-N1X	-2.16	1.35	1.39
3	B	402	BOG	O5-C5	2.13	1.49	1.44
2	B	401	R48	C1N-C1K	2.11	1.41	1.36
3	A	403	BOG	O5-C1	2.07	1.47	1.41
2	B	401	R48	C2C-N1W	-2.07	1.37	1.41
2	A	401	R48	C2-N3	2.06	1.35	1.32

All (45) bond angle outliers are listed below:

Mol	Chain	Res	Type	Atoms	Z	Observed(°)	Ideal(°)
4	A	404	MES	C5-N4-C3	6.84	124.22	108.83
2	B	401	R48	C2-N1-C6	6.41	122.09	116.59
2	A	401	R48	C2-N1-C6	5.66	121.44	116.59
4	A	404	MES	O2S-S-C8	5.42	113.45	106.92
2	A	401	R48	C2L-C2F-N1V	5.28	126.27	120.59
2	A	401	R48	N3-C2-N1	-4.98	120.90	128.68
2	B	401	R48	N3-C2-N1	-4.57	121.54	128.68
3	B	402	BOG	O1-C1-C2	4.51	115.35	108.30
2	B	401	R48	C5-C6-N1	-4.21	117.88	121.35
2	B	401	R48	C6-C5-C4	4.14	118.48	115.88
2	A	401	R48	C2-N3-C4	3.97	120.88	115.40
4	A	404	MES	C7-N4-C3	3.77	120.89	111.23
3	B	403	BOG	O5-C5-C4	3.77	116.54	109.69
2	B	401	R48	C1S-C5-C6	-3.67	121.57	124.88
2	B	401	R48	C2-N3-C4	3.67	120.45	115.40
2	A	401	R48	C1L-C1O-C2E	-3.63	118.76	121.79
2	B	401	R48	C2L-C2F-N1V	3.62	124.48	120.59
2	A	401	R48	C1D-C2L-C2F	3.59	116.81	109.76
2	A	401	R48	C6-C5-C4	3.53	118.10	115.88
2	A	401	R48	C5-C6-N1	-3.52	118.45	121.35
3	B	402	BOG	C6-C5-C4	3.51	121.23	113.00
3	B	402	BOG	C1'-O1-C1	-3.44	108.13	113.84
3	B	403	BOG	O5-C1-C2	3.36	117.46	110.35

Continued on next page...

Continued from previous page...

Mol	Chain	Res	Type	Atoms	Z	Observed(°)	Ideal(°)
2	A	401	R48	C1S-C5-C6	-3.20	121.99	124.88
3	B	403	BOG	O1-C1-C2	3.14	113.20	108.30
2	B	401	R48	C5-C4-N3	-3.09	119.54	122.83
4	A	404	MES	C6-C5-N4	2.84	114.42	110.10
2	B	401	R48	C1B-C2L-C2F	2.81	115.28	109.76
2	A	401	R48	C1R-C2F-N1V	-2.80	107.35	111.41
3	A	403	BOG	O5-C5-C4	2.70	114.61	109.69
2	B	401	R48	N1Y-C6-N1	2.66	122.28	118.72
2	B	401	R48	C1R-C2F-N1V	-2.63	107.60	111.41
2	B	401	R48	N1X-C1Z-N1W	2.60	117.03	112.49
3	B	402	BOG	O5-C1-O1	-2.57	103.89	109.97
4	A	404	MES	O3S-S-C8	2.50	109.82	105.77
3	B	403	BOG	C4-C3-C2	2.47	115.13	110.82
2	A	401	R48	C5-C4-N3	-2.45	120.22	122.83
3	B	403	BOG	C1-C2-C3	2.35	114.90	110.00
4	A	404	MES	O3S-S-O1S	-2.31	105.63	111.27
3	A	402	BOG	C1'-O1-C1	-2.27	110.07	113.84
3	B	403	BOG	C1'-O1-C1	-2.26	110.09	113.84
3	B	403	BOG	C1-O5-C5	2.25	118.10	113.69
2	A	401	R48	C1N-C2E-C1O	2.25	119.64	116.27
2	A	401	R48	N1Y-C6-N1	2.12	121.56	118.72
2	A	401	R48	C1R-C2F-C2L	-2.08	126.36	129.07

There are no chirality outliers.

All (25) torsion outliers are listed below:

Mol	Chain	Res	Type	Atoms
3	B	402	BOG	C2'-C1'-O1-C1
3	B	403	BOG	C2'-C1'-O1-C1
4	A	404	MES	C8-C7-N4-C3
3	A	403	BOG	O5-C1-O1-C1'
3	B	403	BOG	O5-C5-C6-O6
3	A	403	BOG	O5-C5-C6-O6
3	A	402	BOG	C2'-C1'-O1-C1
3	B	403	BOG	C1'-C2'-C3'-C4'
3	B	403	BOG	C3'-C4'-C5'-C6'
3	A	403	BOG	C5'-C6'-C7'-C8'
3	A	402	BOG	C5'-C6'-C7'-C8'
4	A	404	MES	N4-C7-C8-S
3	B	403	BOG	C2'-C3'-C4'-C5'
3	A	403	BOG	C4'-C5'-C6'-C7'
3	B	403	BOG	C4'-C5'-C6'-C7'

Continued on next page...

Continued from previous page...

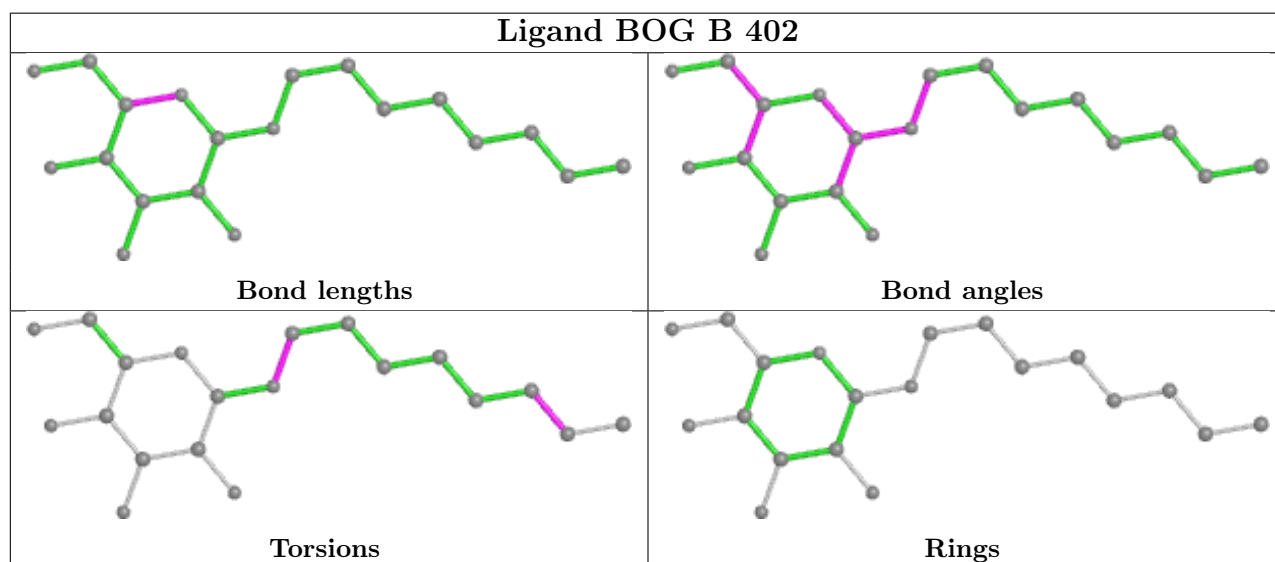
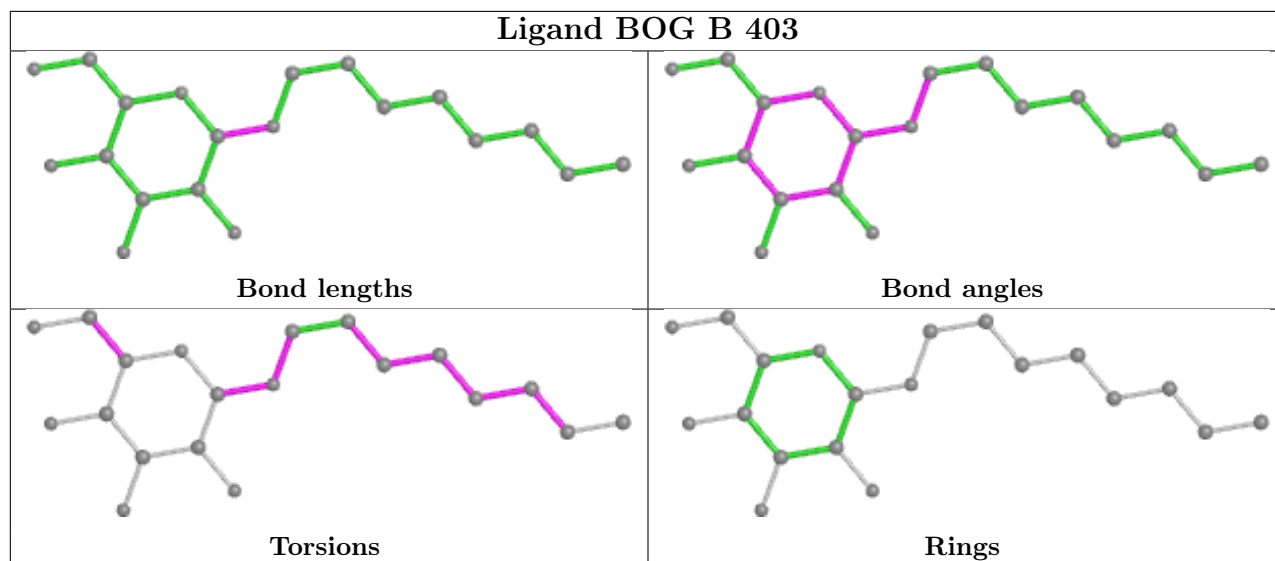
Mol	Chain	Res	Type	Atoms
3	B	402	BOG	C5'-C6'-C7'-C8'
3	B	403	BOG	C5'-C6'-C7'-C8'
3	A	402	BOG	C4-C5-C6-O6
3	A	403	BOG	C1'-C2'-C3'-C4'
3	B	403	BOG	O5-C1-O1-C1'
2	A	401	R48	C1I-C2C-N1W-C1Z
2	A	401	R48	C1Q-C2C-N1W-C1Z
2	B	401	R48	C1I-C2C-N1W-C1Z
2	B	401	R48	C1Q-C2C-N1W-C1Z
3	A	403	BOG	C4-C5-C6-O6

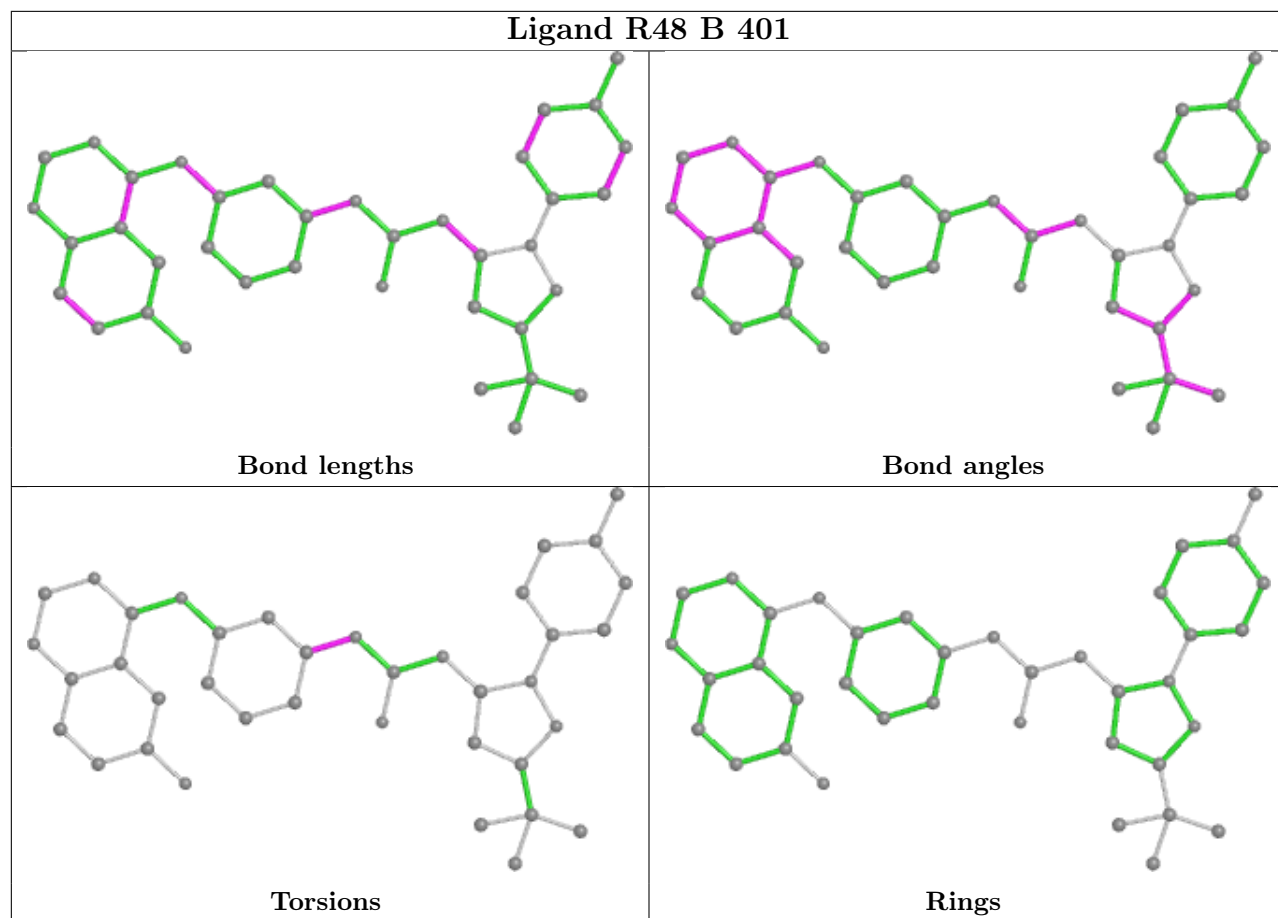
There are no ring outliers.

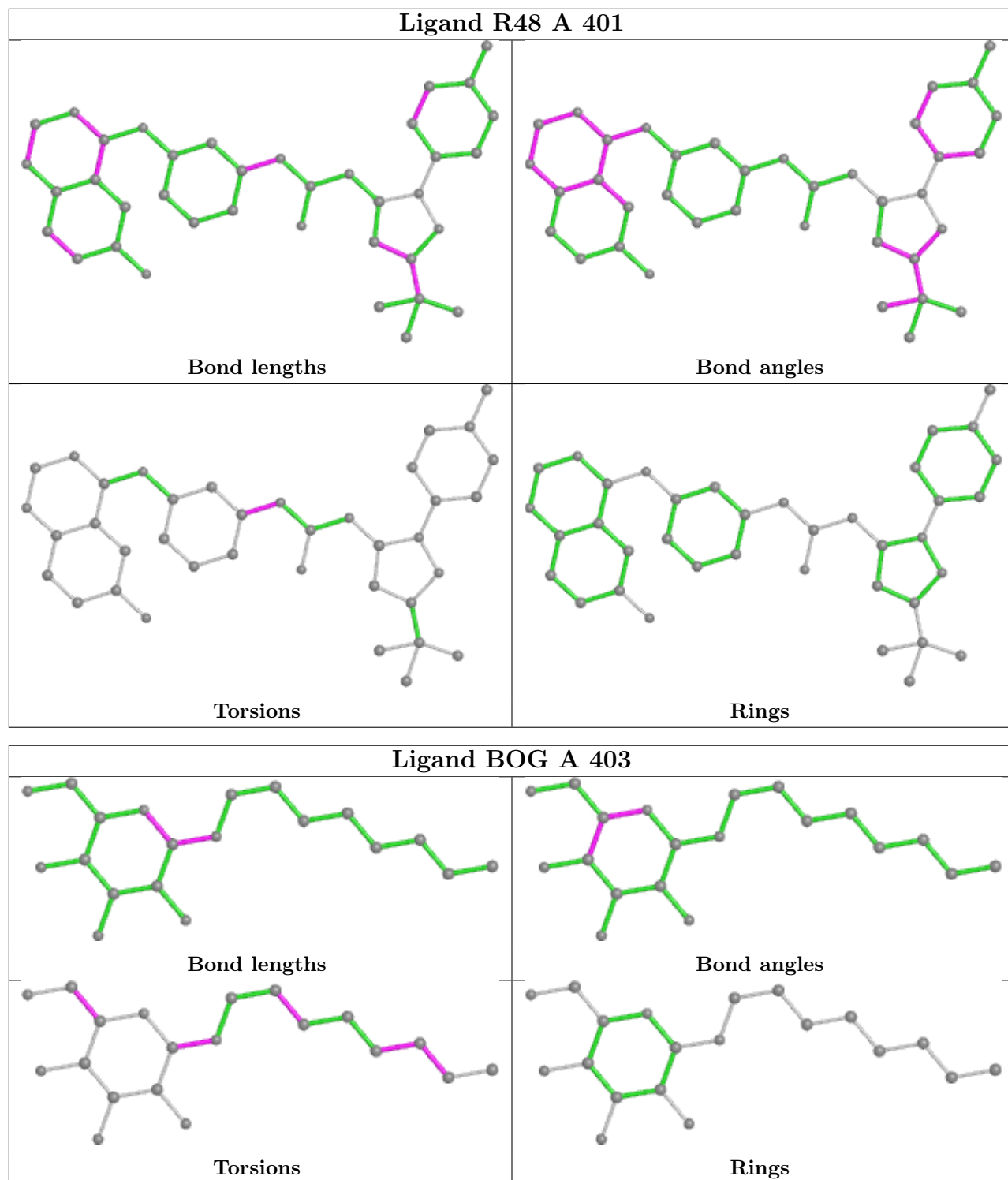
4 monomers are involved in 7 short contacts:

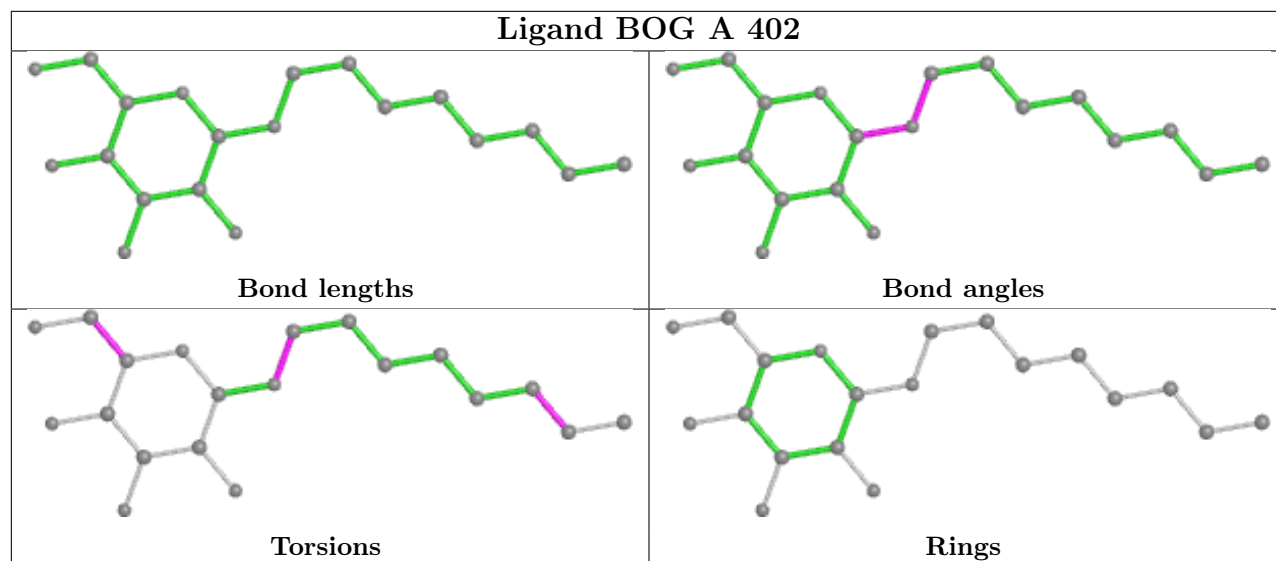
Mol	Chain	Res	Type	Clashes	Symm-Clashes
3	B	403	BOG	2	0
3	B	402	BOG	1	0
2	A	401	R48	3	0
3	A	403	BOG	1	0

The following is a two-dimensional graphical depiction of Mogul quality analysis of bond lengths, bond angles, torsion angles, and ring geometry for all instances of the Ligand of Interest. In addition, ligands with molecular weight > 250 and outliers as shown on the validation Tables will also be included. For torsion angles, if less than 5% of the Mogul distribution of torsion angles is within 10 degrees of the torsion angle in question, then that torsion angle is considered an outlier. Any bond that is central to one or more torsion angles identified as an outlier by Mogul will be highlighted in the graph. For rings, the root-mean-square deviation (RMSD) between the ring in question and similar rings identified by Mogul is calculated over all ring torsion angles. If the average RMSD is greater than 60 degrees and the minimal RMSD between the ring in question and any Mogul-identified rings is also greater than 60 degrees, then that ring is considered an outlier. The outliers are highlighted in purple. The color gray indicates Mogul did not find sufficient equivalents in the CSD to analyse the geometry.









5.7 Other polymers [i](#)

There are no such residues in this entry.

5.8 Polymer linkage issues [i](#)

There are no chain breaks in this entry.

6 Fit of model and data

6.1 Protein, DNA and RNA chains

In the following table, the column labelled ‘#RSRZ > 2’ contains the number (and percentage) of RSRZ outliers, followed by percent RSRZ outliers for the chain as percentile scores relative to all X-ray entries and entries of similar resolution. The OWAB column contains the minimum, median, 95th percentile and maximum values of the occupancy-weighted average B-factor per residue. The column labelled ‘Q < 0.9’ lists the number of (and percentage) of residues with an average occupancy less than 0.9.

Mol	Chain	Analysed	<RSRZ>	#RSRZ>2	OWAB(Å ²)	Q<0.9
1	A	339/360 (94%)	0.06	12 (3%) 44 50	20, 28, 47, 56	0
1	B	337/360 (93%)	0.23	16 (4%) 31 37	19, 29, 49, 58	0
All	All	676/720 (93%)	0.15	28 (4%) 37 43	19, 28, 48, 58	0

All (28) RSRZ outliers are listed below:

Mol	Chain	Res	Type	RSRZ
1	A	172	ALA	7.4
1	A	183	VAL	6.0
1	A	119	CYS	4.5
1	B	329	SER	4.2
1	B	5	ARG	3.9
1	B	119	CYS	3.8
1	B	14	ASN	3.6
1	B	169	PHE	3.5
1	B	34	ALA	3.4
1	B	198	MET	3.4
1	A	110	GLY	3.2
1	A	198	MET	3.1
1	B	352	PRO	3.1
1	B	15	LYS	3.0
1	B	171	LEU	2.9
1	A	118	LYS	2.9
1	B	110	GLY	2.9
1	B	331	ASP	2.8
1	A	35	TYR	2.7
1	B	98	GLU	2.7
1	A	245	GLU	2.6
1	B	97	GLU	2.5
1	B	94	ARG	2.5
1	B	170	GLY	2.5

Continued on next page...

Continued from previous page...

Mol	Chain	Res	Type	RSRZ
1	A	260	GLN	2.4
1	A	199	HIS	2.3
1	A	117	VAL	2.1
1	A	4	GLU	2.0

6.2 Non-standard residues in protein, DNA, RNA chains [i](#)

There are no non-standard protein/DNA/RNA residues in this entry.

6.3 Carbohydrates [i](#)

There are no monosaccharides in this entry.

6.4 Ligands [i](#)

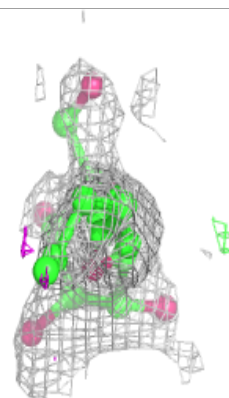
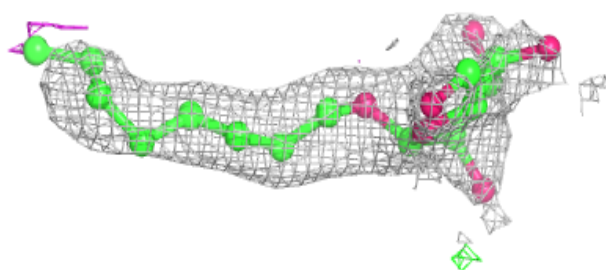
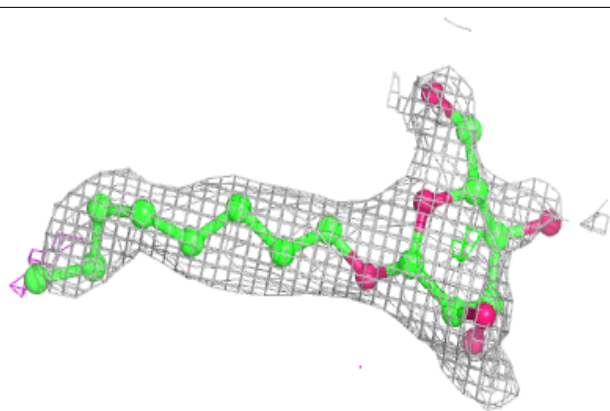
In the following table, the Atoms column lists the number of modelled atoms in the group and the number defined in the chemical component dictionary. The B-factors column lists the minimum, median, 95th percentile and maximum values of B factors of atoms in the group. The column labelled 'Q< 0.9' lists the number of atoms with occupancy less than 0.9.

Mol	Type	Chain	Res	Atoms	RSCC	RSR	B-factors(Å ²)	Q<0.9
3	BOG	B	403	20/20	0.77	0.30	51,65,69,70	0
3	BOG	A	403	20/20	0.83	0.34	59,64,67,68	0
4	MES	A	404	12/12	0.91	0.15	26,33,35,37	12
2	R48	B	401	38/38	0.93	0.11	17,22,30,31	0
2	R48	A	401	38/38	0.93	0.10	18,21,27,27	0
3	BOG	A	402	20/20	0.95	0.12	30,34,39,41	0
3	BOG	B	402	20/20	0.95	0.12	25,28,34,35	0

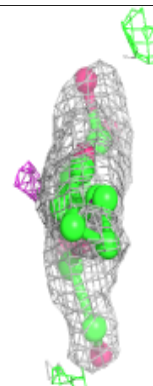
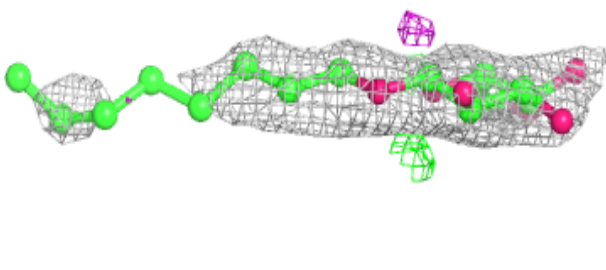
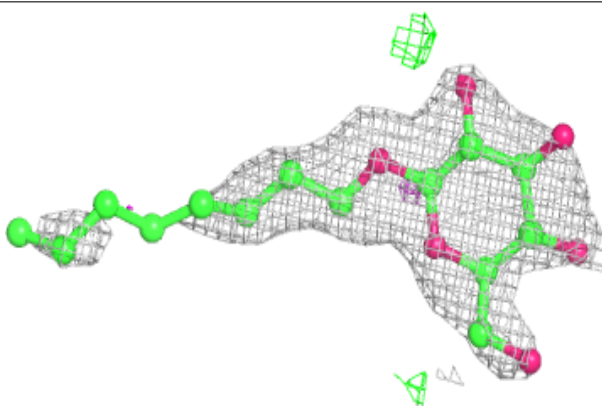
The following is a graphical depiction of the model fit to experimental electron density of all instances of the Ligand of Interest. In addition, ligands with molecular weight > 250 and outliers as shown on the geometry validation Tables will also be included. Each fit is shown from different orientation to approximate a three-dimensional view.

Electron density around BOG B 403:

$2mF_o-DF_c$ (at 0.7 rmsd) in gray
 mF_o-DF_c (at 3 rmsd) in purple (negative)
and green (positive)

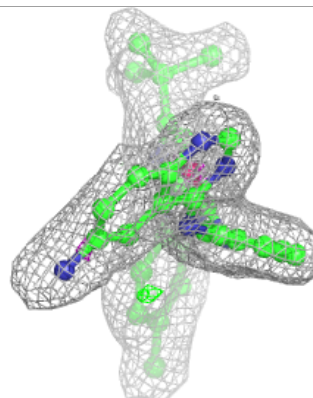
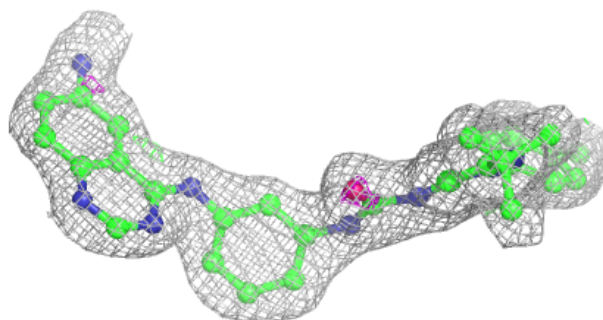
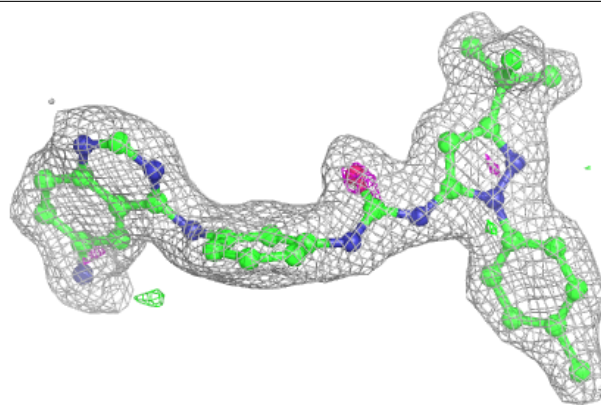
**Electron density around BOG A 403:**

$2mF_o-DF_c$ (at 0.7 rmsd) in gray
 mF_o-DF_c (at 3 rmsd) in purple (negative)
and green (positive)

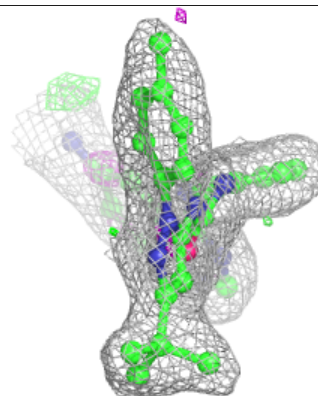
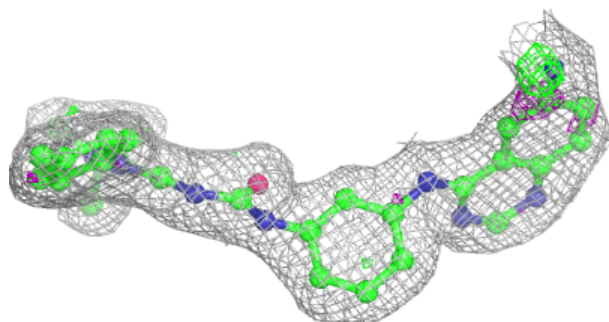
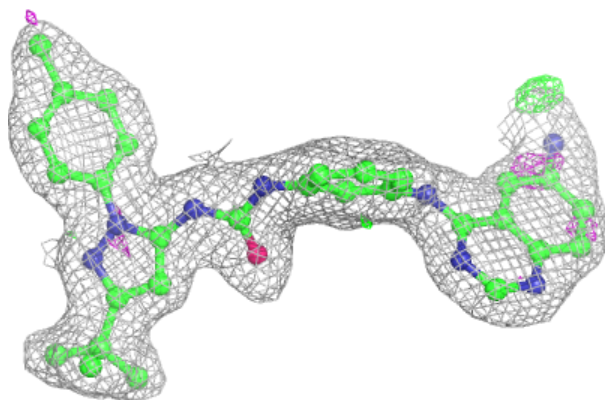


Electron density around R48 B 401:

$2mF_o-DF_c$ (at 0.7 rmsd) in gray
 mF_o-DF_c (at 3 rmsd) in purple (negative)
and green (positive)

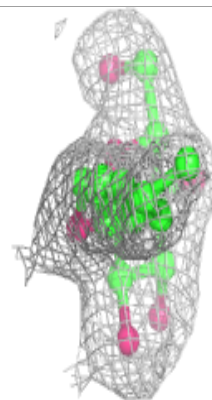
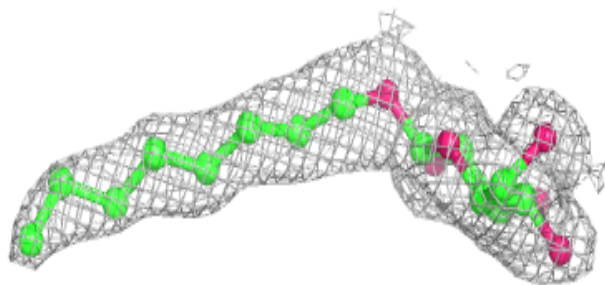
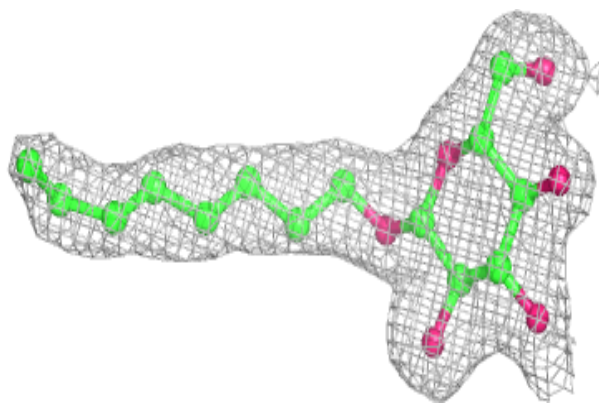
**Electron density around R48 A 401:**

$2mF_o-DF_c$ (at 0.7 rmsd) in gray
 mF_o-DF_c (at 3 rmsd) in purple (negative)
and green (positive)

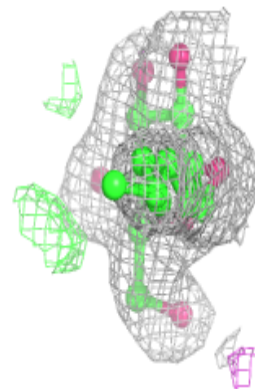
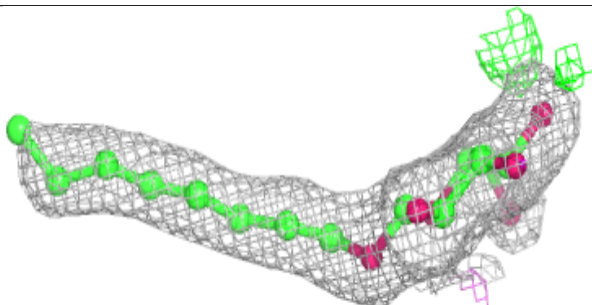
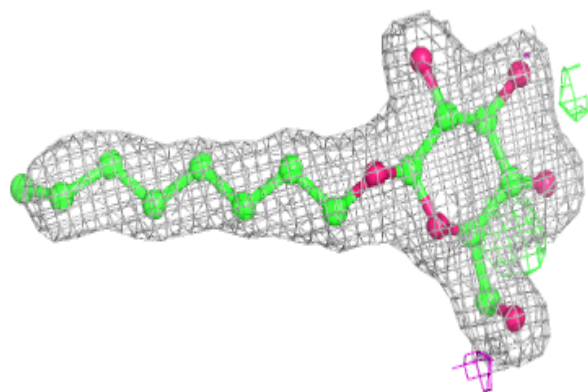


Electron density around BOG A 402:

$2mF_o-DF_c$ (at 0.7 rmsd) in gray
 mF_o-DF_c (at 3 rmsd) in purple (negative)
and green (positive)

**Electron density around BOG B 402:**

$2mF_o-DF_c$ (at 0.7 rmsd) in gray
 mF_o-DF_c (at 3 rmsd) in purple (negative)
and green (positive)



6.5 Other polymers [i](#)

There are no such residues in this entry.