



# Full wwPDB X-ray Structure Validation Report ⓘ

Aug 3, 2023 – 06:36 AM EDT

PDB ID : 1G9V  
Title : HIGH RESOLUTION CRYSTAL STRUCTURE OF DEOXY HEMOGLOBIN COMPLEXED WITH A POTENT ALLOSTERIC EFFECTOR  
Authors : Safo, M.K.; Moure, C.M.; Burnett, J.C.; Joshi, G.S.; Abraham, D.J.  
Deposited on : 2000-11-28  
Resolution : 1.85 Å(reported)

This is a Full wwPDB X-ray Structure Validation Report for a publicly released PDB entry.

We welcome your comments at [validation@mail.wwpdb.org](mailto:validation@mail.wwpdb.org)

A user guide is available at

<https://www.wwpdb.org/validation/2017/XrayValidationReportHelp>

with specific help available everywhere you see the ⓘ symbol.

The types of validation reports are described at

<http://www.wwpdb.org/validation/2017/FAQs#types>.

---

The following versions of software and data (see [references ⓘ](#)) were used in the production of this report:

MolProbity : 4.02b-467  
Mogul : 1.8.5 (274361), CSD as541be (2020)  
Xtriage (Phenix) : 1.13  
EDS : 2.34  
buster-report : 1.1.7 (2018)  
Percentile statistics : 20191225.v01 (using entries in the PDB archive December 25th 2019)  
Refmac : 5.8.0158  
CCP4 : 7.0.044 (Gargrove)  
Ideal geometry (proteins) : Engh & Huber (2001)  
Ideal geometry (DNA, RNA) : Parkinson et al. (1996)  
Validation Pipeline (wwPDB-VP) : 2.34

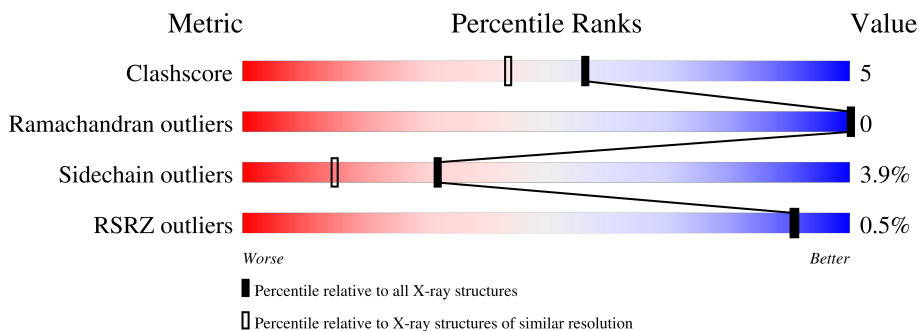
# 1 Overall quality at a glance

The following experimental techniques were used to determine the structure:

*X-RAY DIFFRACTION*

The reported resolution of this entry is 1.85 Å.

Percentile scores (ranging between 0-100) for global validation metrics of the entry are shown in the following graphic. The table shows the number of entries on which the scores are based.



Metric	Whole archive (#Entries)	Similar resolution (#Entries, resolution range(Å))
Clashscore	141614	2625 (1.86-1.86)
Ramachandran outliers	138981	2592 (1.86-1.86)
Sidechain outliers	138945	2592 (1.86-1.86)
RSRZ outliers	127900	2436 (1.86-1.86)

The table below summarises the geometric issues observed across the polymeric chains and their fit to the electron density. The red, orange, yellow and green segments of the lower bar indicate the fraction of residues that contain outliers for  $\geq 3$ , 2, 1 and 0 types of geometric quality criteria respectively. A grey segment represents the fraction of residues that are not modelled. The numeric value for each fraction is indicated below the corresponding segment, with a dot representing fractions  $\leq 5\%$ . The upper red bar (where present) indicates the fraction of residues that have poor fit to the electron density. The numeric value is given above the bar.

Mol	Chain	Length	Quality of chain
1	A	141	
1	C	141	
2	B	146	
2	D	146	

## 2 Entry composition [i](#)

There are 6 unique types of molecules in this entry. The entry contains 4876 atoms, of which 0 are hydrogens and 0 are deuteriums.

In the tables below, the ZeroOcc column contains the number of atoms modelled with zero occupancy, the AltConf column contains the number of residues with at least one atom in alternate conformation and the Trace column contains the number of residues modelled with at most 2 atoms.

- Molecule 1 is a protein called HEMOGLOBIN ALPHA CHAIN.

Mol	Chain	Residues	Atoms					ZeroOcc	AltConf	Trace
			Total	C	N	O	S			
1	A	141	Total 1069	C 685	N 187	O 194	S 3	0	0	0
1	C	141	Total 1069	C 685	N 187	O 194	S 3	0	0	0

- Molecule 2 is a protein called HEMOGLOBIN BETA CHAIN.

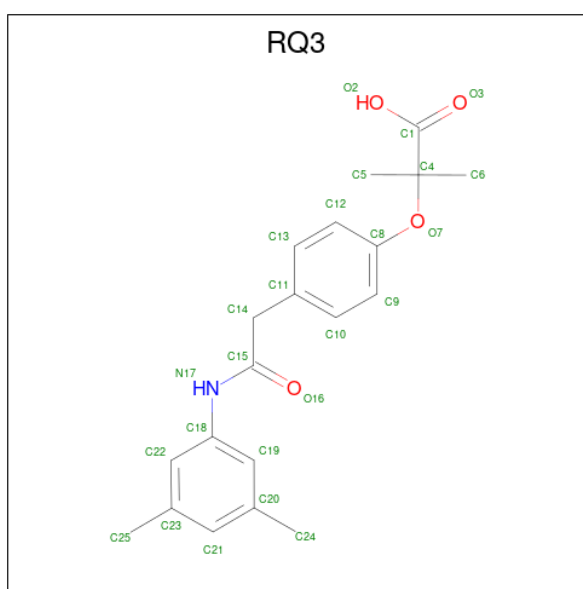
Mol	Chain	Residues	Atoms					ZeroOcc	AltConf	Trace
			Total	C	N	O	S			
2	B	146	Total 1123	C 724	N 195	O 201	S 3	0	0	0
2	D	146	Total 1123	C 724	N 195	O 201	S 3	0	0	0

- Molecule 3 is PROTOPORPHYRIN IX CONTAINING FE (three-letter code: HEM) (formula:  $C_{34}H_{32}FeN_4O_4$ ).



Mol	Chain	Residues	Atoms				ZeroOcc	AltConf	
3	A	1	Total	C	Fe	N	O	0	0
			43	34	1	4	4		
3	B	1	Total	C	Fe	N	O	0	0
			43	34	1	4	4		
3	C	1	Total	C	Fe	N	O	0	0
			43	34	1	4	4		
3	D	1	Total	C	Fe	N	O	0	0
			43	34	1	4	4		

- Molecule 4 is 2-{4-[(3,5-DIMETHYLANILINO)-CARBONYLMETHYL]-PHENOXY}-2-METHYLPROPIONIC ACID (three-letter code: RQ3) (formula: C<sub>20</sub>H<sub>23</sub>NO<sub>4</sub>).



Mol	Chain	Residues	Atoms				ZeroOcc	AltConf
4	A	1	Total	C	N	O	0	0
			25	20	1	4		
4	C	1	Total	C	N	O	0	0
			25	20	1	4		

- Molecule 5 is SULFATE ION (three-letter code: SO4) (formula: O<sub>4</sub>S).



Mol	Chain	Residues	Atoms			ZeroOcc	AltConf
5	B	1	Total	O	S	0	0
			5	4	1		
5	D	1	Total	O	S	0	0
			5	4	1		

- Molecule 6 is water.

Mol	Chain	Residues	Atoms		ZeroOcc	AltConf
6	A	68	Total	O	0	0
			68	68		
6	B	59	Total	O	0	0
			59	59		
6	C	72	Total	O	0	0
			72	72		
6	D	61	Total	O	0	0
			61	61		

### 3 Residue-property plots [i](#)


These plots are drawn for all protein, RNA, DNA and oligosaccharide chains in the entry. The first graphic for a chain summarises the proportions of the various outlier classes displayed in the second graphic. The second graphic shows the sequence view annotated by issues in geometry and electron density. Residues are color-coded according to the number of geometric quality criteria for which they contain at least one outlier: green = 0, yellow = 1, orange = 2 and red = 3 or more. A red dot above a residue indicates a poor fit to the electron density ( $RSRZ > 2$ ). Stretches of 2 or more consecutive residues without any outlier are shown as a green connector. Residues present in the sample, but not in the model, are shown in grey.

- Molecule 1: HEMOGLOBIN ALPHA CHAIN

Chain A:  91% 8%




- Molecule 1: HEMOGLOBIN ALPHA CHAIN

Chain C:  89% 11%




- Molecule 2: HEMOGLOBIN BETA CHAIN

Chain B:  88% 10%



- Molecule 2: HEMOGLOBIN BETA CHAIN

Chain D:  83% 15%



## 4 Data and refinement statistics

Property	Value	Source
Space group	P 1 21 1	Depositor
Cell constants a, b, c, $\alpha$ , $\beta$ , $\gamma$	63.20Å 83.56Å 53.86Å 90.00° 99.16° 90.00°	Depositor
Resolution (Å)	55.00 – 1.85 53.17 – 1.85	Depositor EDS
% Data completeness (in resolution range)	100.0 (55.00-1.85) 93.4 (53.17-1.85)	Depositor EDS
$R_{merge}$	0.06	Depositor
$R_{sym}$	(Not available)	Depositor
$\langle I/\sigma(I) \rangle$ <sup>1</sup>	2.42 (at 1.86Å)	Xtrriage
Refinement program	X-PLOR 3.843	Depositor
R, $R_{free}$	0.177 , 0.208 0.167 , (Not available)	Depositor DCC
$R_{free}$ test set	No test flags present.	wwPDB-VP
Wilson B-factor (Å <sup>2</sup> )	23.9	Xtrriage
Anisotropy	0.242	Xtrriage
Bulk solvent $k_{sol}$ (e/Å <sup>3</sup> ), $B_{sol}$ (Å <sup>2</sup> )	0.34 , 48.1	EDS
L-test for twinning <sup>2</sup>	$\langle  L  \rangle = 0.49$ , $\langle L^2 \rangle = 0.32$	Xtrriage
Estimated twinning fraction	No twinning to report.	Xtrriage
$F_o, F_c$ correlation	0.97	EDS
Total number of atoms	4876	wwPDB-VP
Average B, all atoms (Å <sup>2</sup> )	22.0	wwPDB-VP

Xtrriage's analysis on translational NCS is as follows: *The largest off-origin peak in the Patterson function is 6.49% of the height of the origin peak. No significant pseudotranslation is detected.*

<sup>1</sup>Intensities estimated from amplitudes.

<sup>2</sup>Theoretical values of  $\langle |L| \rangle$ ,  $\langle L^2 \rangle$  for acentric reflections are 0.5, 0.333 respectively for untwinned datasets, and 0.375, 0.2 for perfectly twinned datasets.

## 5 Model quality

### 5.1 Standard geometry

Bond lengths and bond angles in the following residue types are not validated in this section: SO4, RQ3, HEM

The Z score for a bond length (or angle) is the number of standard deviations the observed value is removed from the expected value. A bond length (or angle) with  $|Z| > 5$  is considered an outlier worth inspection. RMSZ is the root-mean-square of all Z scores of the bond lengths (or angles).

Mol	Chain	Bond lengths		Bond angles	
		RMSZ	# $ Z  > 5$	RMSZ	# $ Z  > 5$
1	A	0.48	0/1097	0.62	1/1491 (0.1%)
1	C	0.44	0/1097	0.66	1/1491 (0.1%)
2	B	0.47	0/1153	0.62	0/1566
2	D	0.51	1/1153 (0.1%)	0.65	2/1566 (0.1%)
All	All	0.48	1/4500 (0.0%)	0.64	4/6114 (0.1%)

All (1) bond length outliers are listed below:

Mol	Chain	Res	Type	Atoms	Z	Observed(Å)	Ideal(Å)
2	D	734	VAL	CB-CG2	-5.07	1.42	1.52

All (4) bond angle outliers are listed below:

Mol	Chain	Res	Type	Atoms	Z	Observed(°)	Ideal(°)
2	D	630	ARG	NE-CZ-NH2	-6.66	116.97	120.30
2	D	630	ARG	NE-CZ-NH1	5.81	123.21	120.30
1	C	447	ASP	N-CA-C	-5.37	96.49	111.00
1	A	47	ASP	N-CA-C	-5.26	96.79	111.00

There are no chirality outliers.

There are no planarity outliers.

### 5.2 Too-close contacts

In the following table, the Non-H and H(model) columns list the number of non-hydrogen atoms and hydrogen atoms in the chain respectively. The H(added) column lists the number of hydrogen atoms added and optimized by MolProbity. The Clashes column lists the number of clashes within the asymmetric unit, whereas Symm-Clashes lists symmetry-related clashes.



Mol	Chain	Non-H	H(model)	H(added)	Clashes	Symm-Clashes
1	A	1069	0	1073	7	0
1	C	1069	0	1070	10	0
2	B	1123	0	1115	13	0
2	D	1123	0	1115	20	0
3	A	43	0	30	1	0
3	B	43	0	30	0	0
3	C	43	0	30	0	0
3	D	43	0	30	0	0
4	A	25	0	22	0	0
4	C	25	0	22	1	0
5	B	5	0	0	0	0
5	D	5	0	0	1	0
6	A	68	0	0	2	0
6	B	59	0	0	2	0
6	C	72	0	0	1	0
6	D	61	0	0	2	0
All	All	4876	0	4537	46	0

The all-atom clashscore is defined as the number of clashes found per 1000 atoms (including hydrogen atoms). The all-atom clashscore for this structure is 5.

All (46) close contacts within the same asymmetric unit are listed below, sorted by their clash magnitude.

Atom-1	Atom-2	Interatomic distance (Å)	Clash overlap (Å)
2:D:707:GLY:CA	2:D:734:VAL:HG21	2.13	0.79
1:C:503:HIS:HE1	2:D:731:GLN:OE1	1.74	0.71
2:B:301:GLU:HG3	1:C:496:VAL:HG11	1.74	0.70
1:A:103:HIS:HD2	6:A:912:HOH:O	1.75	0.70
2:D:707:GLY:HA3	2:D:734:VAL:HG21	1.74	0.68
1:C:505:LEU:O	1:C:509:LEU:HD23	1.92	0.68
1:C:513:LEU:HB3	1:C:516:GLU:HG2	1.74	0.68
1:A:103:HIS:HE1	2:B:331:GLN:OE1	1.77	0.67
2:D:707:GLY:HA3	2:D:734:VAL:CG2	2.26	0.66
1:C:427:GLU:OE2	1:C:512:HIS:HE1	1.83	0.61
2:B:279:ASP:HB2	6:B:1140:HOH:O	2.01	0.60
1:C:503:HIS:HD2	6:C:910:HOH:O	1.85	0.59
2:B:301:GLU:HG3	1:C:496:VAL:CG1	2.37	0.54
2:D:601:VAL:N	5:D:1300:SO4:O3	2.45	0.49
2:D:626:GLU:OE2	2:D:630:ARG:HD2	2.13	0.48
1:A:66:LEU:HD11	1:A:105:LEU:HD21	1.96	0.48
2:B:277:HIS:HD2	6:B:1009:HOH:O	1.95	0.47
2:B:307:GLY:HA2	2:B:334:VAL:HG21	1.96	0.47

*Continued on next page...*

Continued from previous page...

Atom-1	Atom-2	Interatomic distance (Å)	Clash overlap (Å)
2:D:707:GLY:CA	2:D:734:VAL:CG2	2.86	0.46
2:B:238:THR:HG22	2:B:302:ASN:OD1	2.15	0.46
2:D:691:LEU:CD1	2:D:695:LYS:HD2	2.46	0.46
2:B:224:GLY:HA2	2:B:268:LEU:HG	1.98	0.46
2:B:245:PHE:HA	2:B:259:LYS:HD2	1.98	0.46
1:C:456:LYS:HB2	1:C:456:LYS:HE3	1.74	0.45
2:D:618:VAL:HG13	2:D:623:VAL:HG21	1.98	0.45
1:A:58:HIS:HE1	3:A:143:HEM:CHA	2.30	0.45
2:B:275:LEU:HA	2:B:278:LEU:HD13	1.99	0.44
2:D:707:GLY:HA2	2:D:734:VAL:HG21	1.93	0.44
2:B:307:GLY:CA	2:B:334:VAL:HG21	2.47	0.44
1:A:60:LYS:HE3	1:A:60:LYS:HB2	1.77	0.44
2:D:606:GLU:HG3	2:D:607:GLU:N	2.32	0.44
1:C:442:TYR:CE1	1:C:493:VAL:HA	2.53	0.43
2:D:606:GLU:HG2	6:D:1146:HOH:O	2.18	0.43
1:A:4:PRO:HD2	6:A:1122:HOH:O	2.19	0.43
1:A:21:ALA:HB1	1:A:63:ALA:HB1	2.00	0.43
2:D:614:LEU:HD21	2:D:718:PHE:CD1	2.54	0.43
2:D:614:LEU:HD21	2:D:718:PHE:CE1	2.53	0.42
2:D:724:PRO:HB2	2:D:725:PRO:HD3	2.01	0.42
2:D:691:LEU:HD12	2:D:695:LYS:HD2	2.02	0.42
2:D:743:HIS:HB3	6:D:936:HOH:O	2.19	0.41
2:B:300:PRO:HB3	2:B:342:ALA:HB2	2.03	0.41
4:C:802:RQ3:C1	4:C:802:RQ3:H91	2.51	0.41
2:D:614:LEU:HD23	2:D:614:LEU:O	2.21	0.40
2:D:657:ASN:HA	2:D:658:PRO:HD3	1.86	0.40
2:D:700:PRO:HB3	2:D:742:ALA:HB2	2.03	0.40
2:B:301:GLU:CG	1:C:496:VAL:HG11	2.47	0.40

There are no symmetry-related clashes.

## 5.3 Torsion angles [i](#)

### 5.3.1 Protein backbone [i](#)

In the following table, the Percentiles column shows the percent Ramachandran outliers of the chain as a percentile score with respect to all X-ray entries followed by that with respect to entries of similar resolution.

The Analysed column shows the number of residues for which the backbone conformation was analysed, and the total number of residues.

Mol	Chain	Analysed	Favoured	Allowed	Outliers	Percentiles	
1	A	139/141 (99%)	138 (99%)	1 (1%)	0	100	100
1	C	139/141 (99%)	136 (98%)	3 (2%)	0	100	100
2	B	144/146 (99%)	143 (99%)	1 (1%)	0	100	100
2	D	144/146 (99%)	142 (99%)	2 (1%)	0	100	100
All	All	566/574 (99%)	559 (99%)	7 (1%)	0	100	100

There are no Ramachandran outliers to report.

### 5.3.2 Protein sidechains [i](#)

In the following table, the Percentiles column shows the percent sidechain outliers of the chain as a percentile score with respect to all X-ray entries followed by that with respect to entries of similar resolution.

The Analysed column shows the number of residues for which the sidechain conformation was analysed, and the total number of residues.

Mol	Chain	Analysed	Rotameric	Outliers	Percentiles	
1	A	113/113 (100%)	109 (96%)	4 (4%)	36	18
1	C	113/113 (100%)	108 (96%)	5 (4%)	28	12
2	B	118/118 (100%)	114 (97%)	4 (3%)	37	19
2	D	118/118 (100%)	113 (96%)	5 (4%)	30	13
All	All	462/462 (100%)	444 (96%)	18 (4%)	32	15

All (18) residues with a non-rotameric sidechain are listed below:

Mol	Chain	Res	Type
1	A	78	ASN
1	A	101	LEU
1	A	105	LEU
1	A	109	LEU
2	B	214	LEU
2	B	268	LEU
2	B	278	LEU
2	B	334	VAL
1	C	480	LEU
1	C	483	LEU
1	C	490	LYS
1	C	505	LEU
1	C	506	LEU

*Continued on next page...*

*Continued from previous page...*

Mol	Chain	Res	Type
2	D	614	LEU
2	D	668	LEU
2	D	675	LEU
2	D	678	LEU
2	D	739	ASN

Sometimes sidechains can be flipped to improve hydrogen bonding and reduce clashes. All (8) such sidechains are listed below:

Mol	Chain	Res	Type
1	A	72	HIS
1	A	103	HIS
1	C	450	HIS
1	C	472	HIS
1	C	503	HIS
1	C	512	HIS
2	D	663	HIS
2	D	717	HIS

### 5.3.3 RNA [i](#)

There are no RNA molecules in this entry.

## 5.4 Non-standard residues in protein, DNA, RNA chains [i](#)

There are no non-standard protein/DNA/RNA residues in this entry.

## 5.5 Carbohydrates [i](#)

There are no monosaccharides in this entry.

## 5.6 Ligand geometry [i](#)

8 ligands are modelled in this entry.

In the following table, the Counts columns list the number of bonds (or angles) for which Mogul statistics could be retrieved, the number of bonds (or angles) that are observed in the model and the number of bonds (or angles) that are defined in the Chemical Component Dictionary. The Link column lists molecule types, if any, to which the group is linked. The Z score for a bond length (or angle) is the number of standard deviations the observed value is removed from the

expected value. A bond length (or angle) with  $|Z| > 2$  is considered an outlier worth inspection. RMSZ is the root-mean-square of all Z scores of the bond lengths (or angles).

Mol	Type	Chain	Res	Link	Bond lengths			Bond angles		
					Counts	RMSZ	# Z  > 2	Counts	RMSZ	# Z  > 2
4	RQ3	A	801	-	26,26,26	1.43	3 (11%)	37,37,37	0.95	1 (2%)
3	HEM	C	543	1	41,50,50	1.52	9 (21%)	45,82,82	1.47	5 (11%)
5	SO4	D	1300	-	4,4,4	0.36	0	6,6,6	0.31	0
3	HEM	B	348	2	41,50,50	1.37	7 (17%)	45,82,82	1.25	3 (6%)
4	RQ3	C	802	-	26,26,26	1.03	2 (7%)	37,37,37	0.87	1 (2%)
5	SO4	B	1200	-	4,4,4	0.40	0	6,6,6	0.27	0
3	HEM	D	748	2	41,50,50	1.41	7 (17%)	45,82,82	1.48	7 (15%)
3	HEM	A	143	1	41,50,50	1.59	10 (24%)	45,82,82	1.52	9 (20%)

In the following table, the Chirals column lists the number of chiral outliers, the number of chiral centers analysed, the number of these observed in the model and the number defined in the Chemical Component Dictionary. Similar counts are reported in the Torsion and Rings columns. '-' means no outliers of that kind were identified.

Mol	Type	Chain	Res	Link	Chirals	Torsions	Rings
4	RQ3	A	801	-	-	0/19/19/19	0/2/2/2
3	HEM	C	543	1	-	4/12/54/54	-
3	HEM	B	348	2	-	2/12/54/54	-
4	RQ3	C	802	-	-	0/19/19/19	0/2/2/2
3	HEM	D	748	2	-	2/12/54/54	-
3	HEM	A	143	1	-	4/12/54/54	-

All (38) bond length outliers are listed below:

Mol	Chain	Res	Type	Atoms	Z	Observed(Å)	Ideal(Å)
4	A	801	RQ3	C14-C11	-4.97	1.43	1.51
3	A	143	HEM	C3C-C2C	-3.67	1.35	1.40
3	B	348	HEM	CBB-CAB	3.39	1.47	1.30
3	C	543	HEM	C3C-CAC	-3.35	1.40	1.47
3	A	143	HEM	CBB-CAB	3.19	1.46	1.30
3	D	748	HEM	C3C-CAC	-3.11	1.41	1.47
3	C	543	HEM	CBC-CAC	3.05	1.49	1.29
3	A	143	HEM	CHA-C4D	2.95	1.42	1.35
3	A	143	HEM	C3C-CAC	-2.81	1.42	1.47
4	C	802	RQ3	O7-C8	2.77	1.49	1.41
4	A	801	RQ3	C4-C1	-2.76	1.50	1.53
3	D	748	HEM	CHA-C4D	2.75	1.42	1.35

*Continued on next page...*

*Continued from previous page...*

Mol	Chain	Res	Type	Atoms	Z	Observed(Å)	Ideal(Å)
3	B	348	HEM	C3C-CAC	-2.75	1.42	1.47
3	D	748	HEM	FE-NB	2.73	2.10	1.96
3	C	543	HEM	CHB-C1B	2.69	1.41	1.35
4	A	801	RQ3	O7-C8	2.68	1.49	1.41
3	B	348	HEM	FE-ND	2.67	2.10	1.96
3	C	543	HEM	FE-NB	2.66	2.10	1.96
4	C	802	RQ3	C4-C1	-2.54	1.50	1.53
3	D	748	HEM	CBB-CAB	2.50	1.42	1.30
3	C	543	HEM	C1B-C2B	2.43	1.49	1.44
3	C	543	HEM	CMB-C2B	2.41	1.55	1.50
3	A	143	HEM	FE-NB	2.38	2.08	1.96
3	B	348	HEM	C1A-NA	2.35	1.41	1.36
3	A	143	HEM	CHB-C1B	2.35	1.41	1.35
3	A	143	HEM	CBC-CAC	2.34	1.44	1.29
3	C	543	HEM	CAB-C3B	-2.34	1.41	1.47
3	D	748	HEM	CBC-CAC	2.33	1.44	1.29
3	A	143	HEM	C3B-C4B	2.29	1.49	1.44
3	D	748	HEM	C3C-C2C	-2.26	1.37	1.40
3	D	748	HEM	C4A-NA	2.17	1.40	1.36
3	C	543	HEM	CBB-CAB	2.11	1.40	1.30
3	A	143	HEM	FE-ND	2.10	2.07	1.96
3	C	543	HEM	C3C-C2C	-2.09	1.37	1.40
3	B	348	HEM	CHA-C4D	2.09	1.40	1.35
3	B	348	HEM	CBC-CAC	2.06	1.42	1.29
3	A	143	HEM	C1A-NA	2.05	1.40	1.36
3	B	348	HEM	FE-NB	2.04	2.06	1.96

All (26) bond angle outliers are listed below:

Mol	Chain	Res	Type	Atoms	Z	Observed(°)	Ideal(°)
3	C	543	HEM	C4B-CHC-C1C	5.89	130.33	122.56
3	D	748	HEM	C4B-CHC-C1C	4.95	129.09	122.56
3	B	348	HEM	C4B-CHC-C1C	4.64	128.68	122.56
3	A	143	HEM	C4B-CHC-C1C	3.96	127.79	122.56
4	A	801	RQ3	C4-O7-C8	3.22	126.11	120.95
3	A	143	HEM	CMA-C3A-C4A	-3.17	123.59	128.46
3	B	348	HEM	C4C-CHD-C1D	3.10	126.65	122.56
3	C	543	HEM	C4C-CHD-C1D	3.07	126.61	122.56
4	C	802	RQ3	C4-O7-C8	2.95	125.69	120.95
3	D	748	HEM	CAD-C3D-C2D	-2.88	122.52	127.88
3	A	143	HEM	CMD-C2D-C1D	2.86	129.40	125.04
3	A	143	HEM	CMA-C3A-C2A	2.84	130.29	124.94

*Continued on next page...*

Continued from previous page...

Mol	Chain	Res	Type	Atoms	Z	Observed(°)	Ideal(°)
3	A	143	HEM	C3B-C2B-C1B	2.74	108.52	106.49
3	A	143	HEM	C4C-CHD-C1D	2.70	126.13	122.56
3	D	748	HEM	C4A-C3A-C2A	-2.65	105.15	107.00
3	C	543	HEM	C3B-C2B-C1B	-2.62	104.54	106.49
3	C	543	HEM	C2C-C3C-C4C	-2.59	105.09	106.90
3	A	143	HEM	C4B-C3B-C2B	-2.53	105.11	107.11
3	C	543	HEM	CHC-C4B-NB	-2.44	121.78	124.43
3	D	748	HEM	CMD-C2D-C1D	2.29	128.53	125.04
3	D	748	HEM	CAD-C3D-C4D	2.23	128.55	124.66
3	D	748	HEM	C4C-CHD-C1D	2.15	125.40	122.56
3	A	143	HEM	C2C-C3C-C4C	-2.14	105.40	106.90
3	B	348	HEM	CMA-C3A-C4A	-2.08	125.26	128.46
3	A	143	HEM	CAD-C3D-C2D	-2.05	124.06	127.88
3	D	748	HEM	C3B-C2B-C1B	2.00	107.97	106.49

There are no chirality outliers.

All (12) torsion outliers are listed below:

Mol	Chain	Res	Type	Atoms
3	A	143	HEM	CAD-CBD-CGD-O1D
3	C	543	HEM	CAD-CBD-CGD-O1D
3	C	543	HEM	CAD-CBD-CGD-O2D
3	B	348	HEM	CAD-CBD-CGD-O2D
3	C	543	HEM	CAA-CBA-CGA-O2A
3	A	143	HEM	CAD-CBD-CGD-O2D
3	B	348	HEM	CAD-CBD-CGD-O1D
3	C	543	HEM	CAA-CBA-CGA-O1A
3	D	748	HEM	CAD-CBD-CGD-O2D
3	D	748	HEM	CAD-CBD-CGD-O1D
3	A	143	HEM	CAA-CBA-CGA-O2A
3	A	143	HEM	CAA-CBA-CGA-O1A

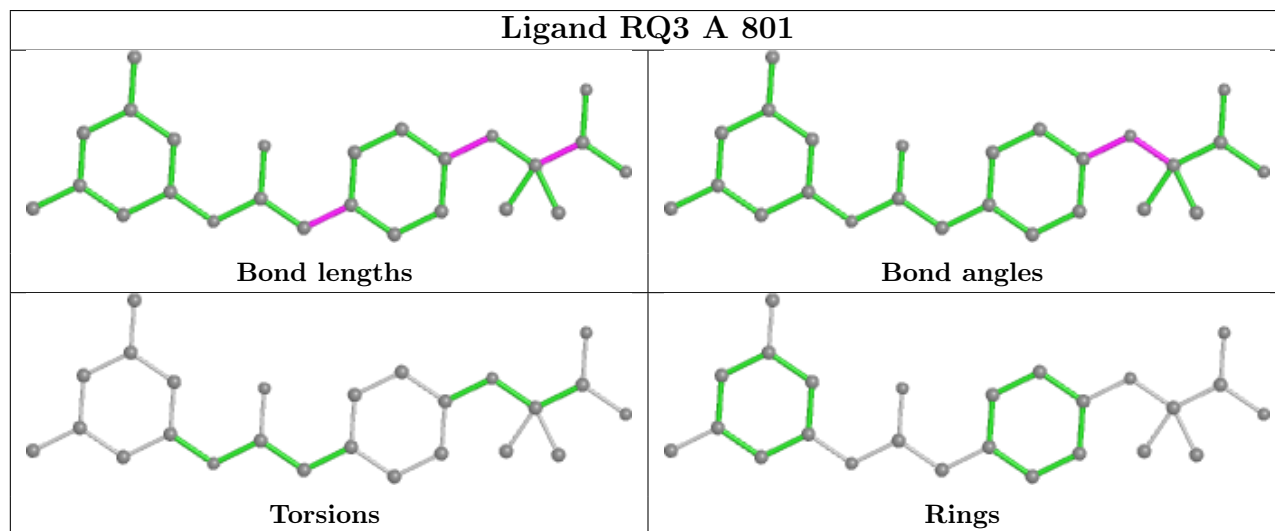
There are no ring outliers.

3 monomers are involved in 3 short contacts:

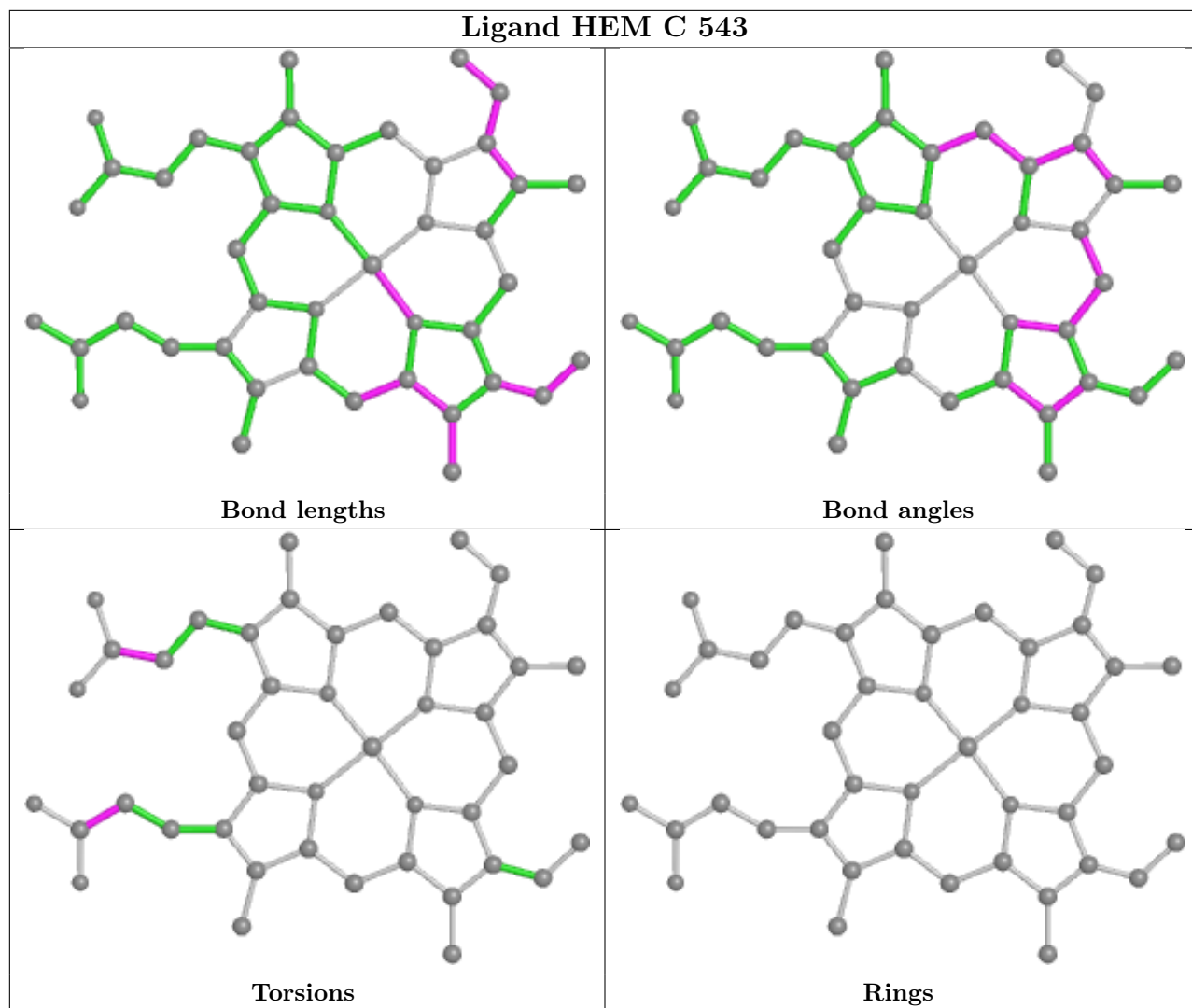
Mol	Chain	Res	Type	Clashes	Symm-Clashes
5	D	1300	SO4	1	0
4	C	802	RQ3	1	0
3	A	143	HEM	1	0

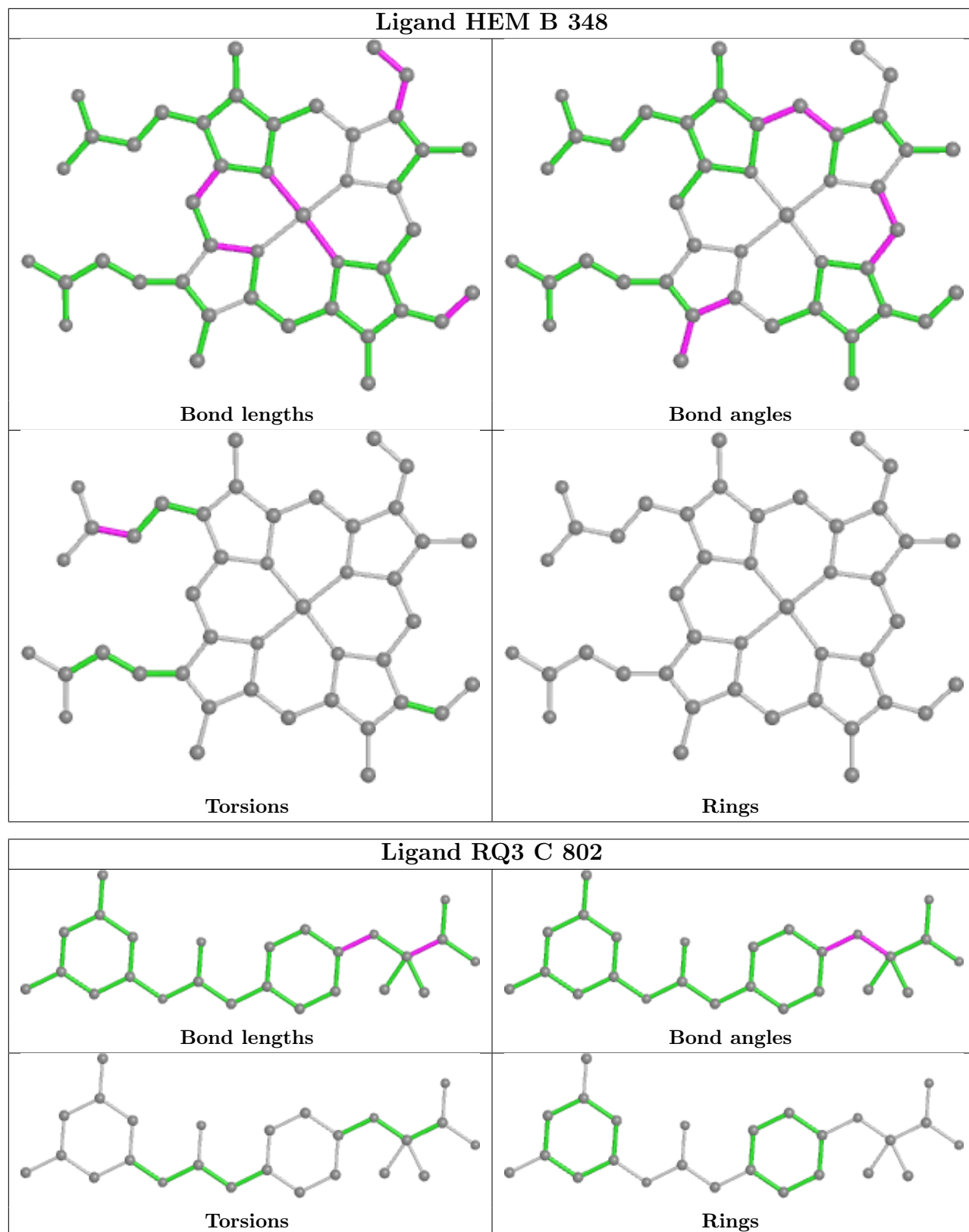
The following is a two-dimensional graphical depiction of Mogul quality analysis of bond lengths,

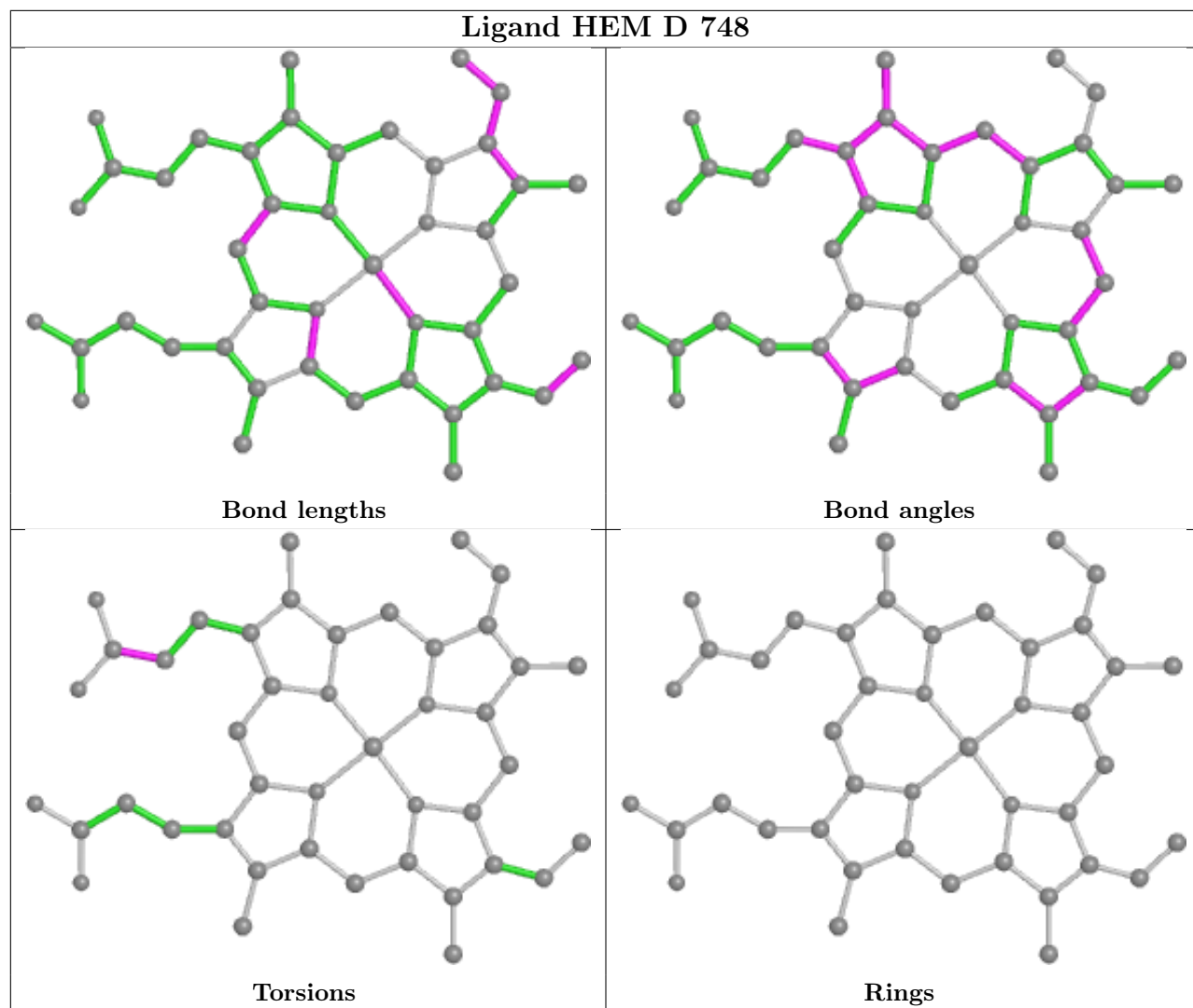
bond angles, torsion angles, and ring geometry for all instances of the Ligand of Interest. In addition, ligands with molecular weight > 250 and outliers as shown on the validation Tables will also be included. For torsion angles, if less than 5% of the Mogul distribution of torsion angles is within 10 degrees of the torsion angle in question, then that torsion angle is considered an outlier. Any bond that is central to one or more torsion angles identified as an outlier by Mogul will be highlighted in the graph. For rings, the root-mean-square deviation (RMSD) between the ring in question and similar rings identified by Mogul is calculated over all ring torsion angles. If the average RMSD is greater than 60 degrees and the minimal RMSD between the ring in question and any Mogul-identified rings is also greater than 60 degrees, then that ring is considered an outlier. The outliers are highlighted in purple. The color gray indicates Mogul did not find sufficient equivalents in the CSD to analyse the geometry.

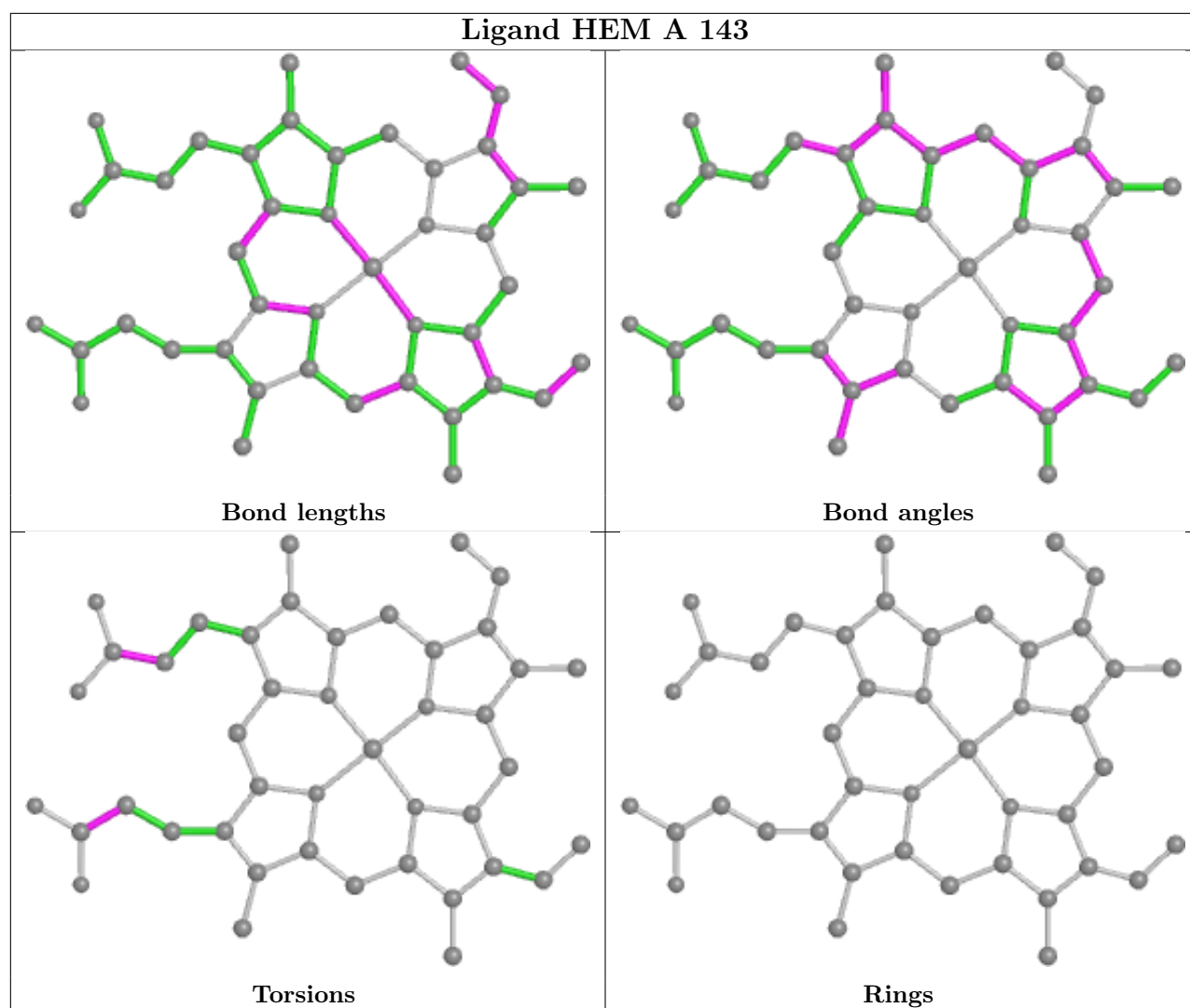












## 5.7 Other polymers [i](#)

There are no such residues in this entry.

## 5.8 Polymer linkage issues [i](#)

There are no chain breaks in this entry.

## 6 Fit of model and data [i](#)

### 6.1 Protein, DNA and RNA chains [i](#)

In the following table, the column labelled ‘#RSRZ> 2’ contains the number (and percentage) of RSRZ outliers, followed by percent RSRZ outliers for the chain as percentile scores relative to all X-ray entries and entries of similar resolution. The OWAB column contains the minimum, median, 95<sup>th</sup> percentile and maximum values of the occupancy-weighted average B-factor per residue. The column labelled ‘Q< 0.9’ lists the number of (and percentage) of residues with an average occupancy less than 0.9.

Mol	Chain	Analysed	<RSRZ>	#RSRZ>2	OWAB(Å <sup>2</sup> )	Q<0.9
1	A	141/141 (100%)	-0.51	0 <a href="#">100</a> <a href="#">100</a>	12, 18, 32, 40	0
1	C	141/141 (100%)	-0.55	0 <a href="#">100</a> <a href="#">100</a>	12, 18, 31, 39	0
2	B	146/146 (100%)	-0.47	2 (1%) <a href="#">75</a> <a href="#">76</a>	12, 20, 34, 49	0
2	D	146/146 (100%)	-0.43	1 (0%) <a href="#">87</a> <a href="#">88</a>	12, 21, 37, 49	0
All	All	574/574 (100%)	-0.49	3 (0%) <a href="#">91</a> <a href="#">91</a>	12, 19, 34, 49	0

All (3) RSRZ outliers are listed below:

Mol	Chain	Res	Type	RSRZ
2	B	202	HIS	3.9
2	B	201	VAL	3.4
2	D	602	HIS	2.5

### 6.2 Non-standard residues in protein, DNA, RNA chains [i](#)

There are no non-standard protein/DNA/RNA residues in this entry.

### 6.3 Carbohydrates [i](#)

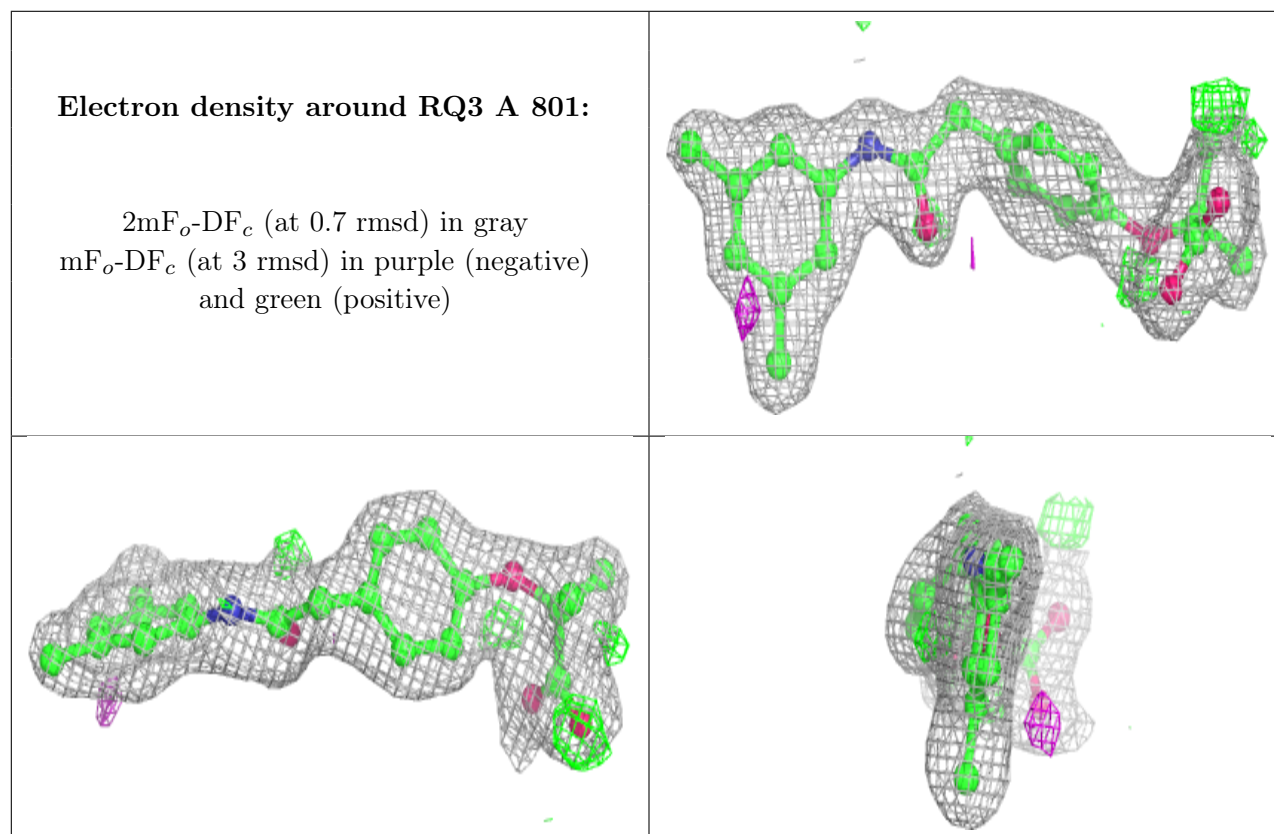
There are no monosaccharides in this entry.

### 6.4 Ligands [i](#)

In the following table, the Atoms column lists the number of modelled atoms in the group and the number defined in the chemical component dictionary. The B-factors column lists the minimum, median, 95<sup>th</sup> percentile and maximum values of B factors of atoms in the group. The column labelled ‘Q< 0.9’ lists the number of atoms with occupancy less than 0.9.

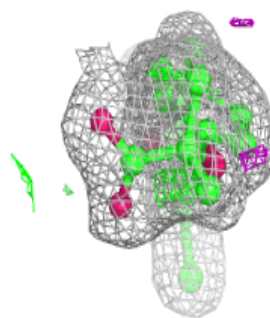
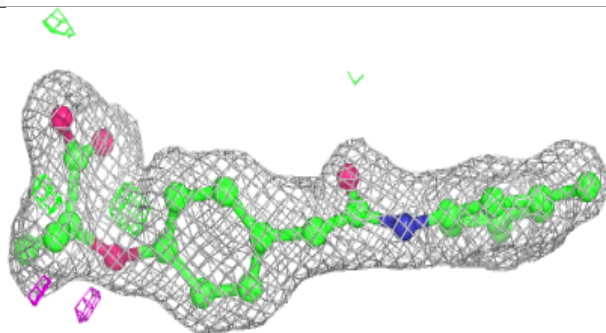
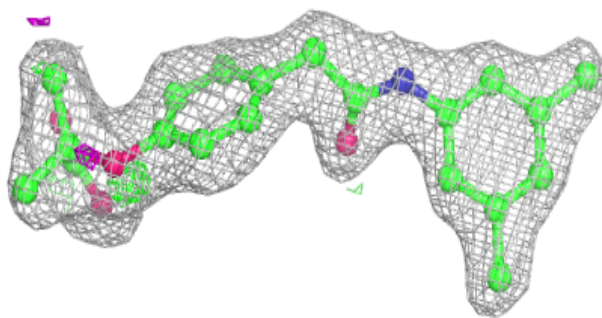
Mol	Type	Chain	Res	Atoms	RSCC	RSR	B-factors( $\text{\AA}^2$ )	Q<0.9
5	SO4	B	1200	5/5	0.87	0.29	61,62,63,67	0
5	SO4	D	1300	5/5	0.92	0.16	57,57,59,60	0
4	RQ3	A	801	25/25	0.94	0.10	19,24,35,39	0
4	RQ3	C	802	25/25	0.94	0.10	26,28,33,35	0
3	HEM	D	748	43/43	0.97	0.09	14,18,40,45	0
3	HEM	C	543	43/43	0.98	0.08	12,15,29,30	0
3	HEM	A	143	43/43	0.98	0.08	11,17,28,35	0
3	HEM	B	348	43/43	0.98	0.08	13,16,26,35	0

The following is a graphical depiction of the model fit to experimental electron density of all instances of the Ligand of Interest. In addition, ligands with molecular weight > 250 and outliers as shown on the geometry validation Tables will also be included. Each fit is shown from different orientation to approximate a three-dimensional view.



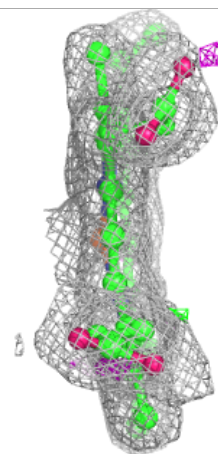
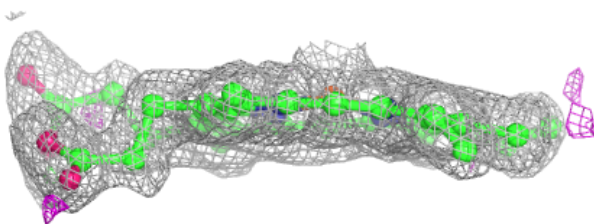
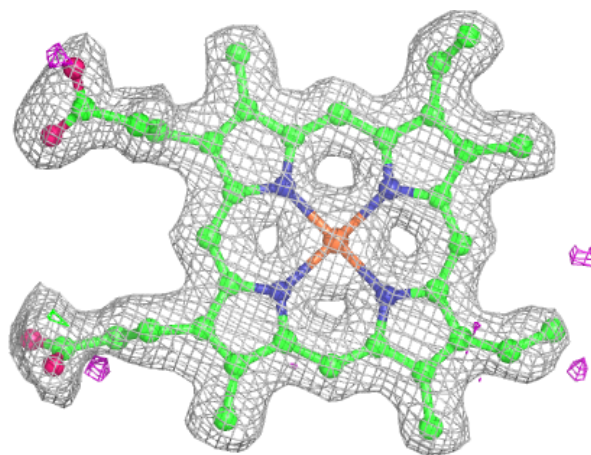
**Electron density around RQ3 C 802:**

$2mF_o-DF_c$  (at 0.7 rmsd) in gray  
 $mF_o-DF_c$  (at 3 rmsd) in purple (negative)  
and green (positive)



**Electron density around HEM D 748:**

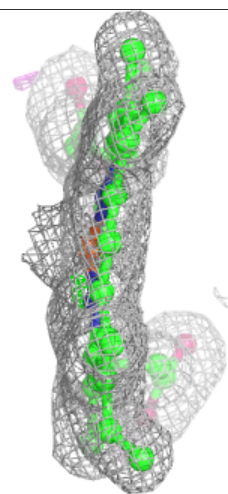
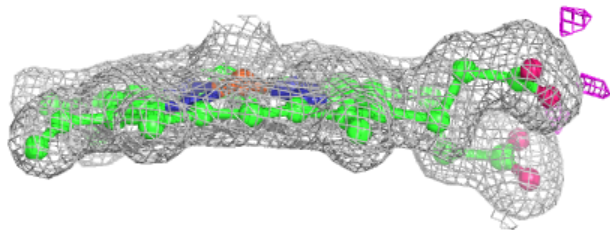
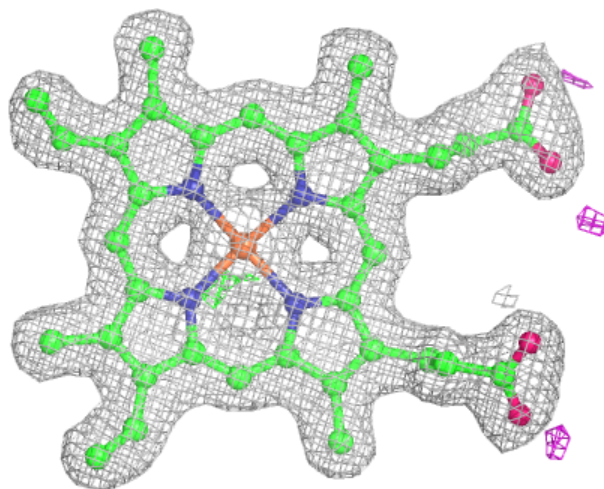
$2mF_o-DF_c$  (at 0.7 rmsd) in gray  
 $mF_o-DF_c$  (at 3 rmsd) in purple (negative)  
and green (positive)





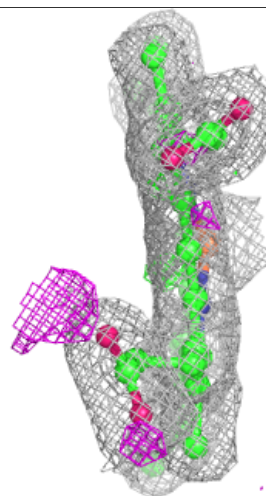
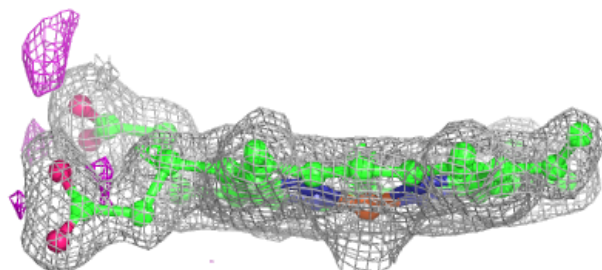
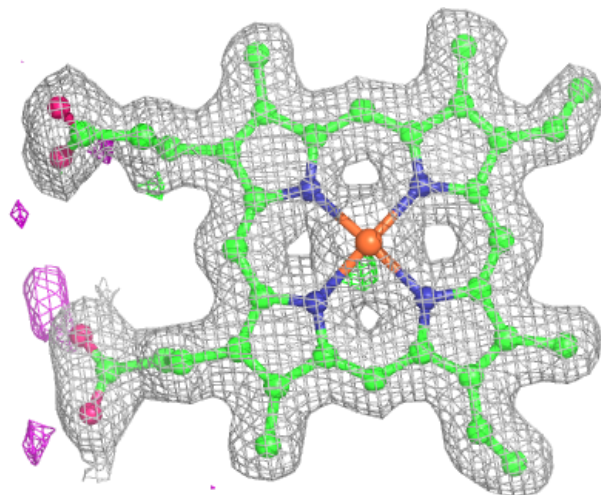
**Electron density around HEM C 543:**

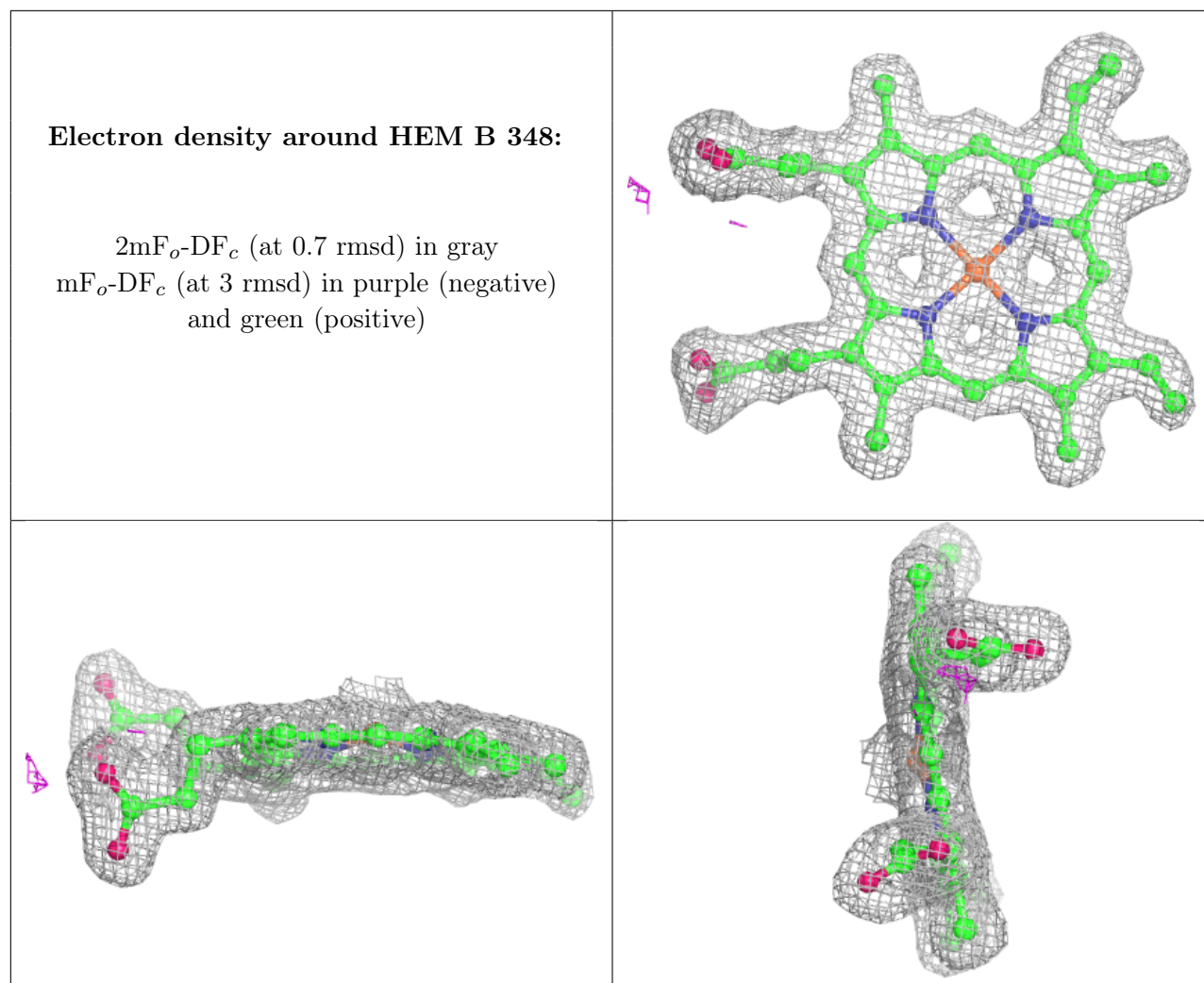
$2mF_o-DF_c$  (at 0.7 rmsd) in gray  
 $mF_o-DF_c$  (at 3 rmsd) in purple (negative)  
and green (positive)



**Electron density around HEM A 143:**

$2mF_o-DF_c$  (at 0.7 rmsd) in gray  
 $mF_o-DF_c$  (at 3 rmsd) in purple (negative)  
and green (positive)





## 6.5 Other polymers [i](#)

There are no such residues in this entry.