



## Full wwPDB EM Validation Report ⓘ

Feb 12, 2024 – 12:32 PM EST

PDB ID : 8G78  
EMDB ID : EMD-29802  
Title : Local refinement of SARS-CoV-2 spike/nanobody mixture complex around NTD  
Authors : Ye, G.; Bu, F.; Liu, B.; Li, F.  
Deposited on : 2023-02-16  
Resolution : 3.40 Å(reported)

This is a Full wwPDB EM Validation Report for a publicly released PDB entry.

We welcome your comments at [validation@mail.wwpdb.org](mailto:validation@mail.wwpdb.org)

A user guide is available at

<https://www.wwpdb.org/validation/2017/EMValidationReportHelp>

with specific help available everywhere you see the ⓘ symbol.

The types of validation reports are described at

<http://www.wwpdb.org/validation/2017/FAQs#types>.

---

The following versions of software and data (see [references ⓘ](#)) were used in the production of this report:

EMDB validation analysis : 0.0.1.dev70  
Mogul : 1.8.5 (274361), CSD as541be (2020)  
MolProbity : 4.02b-467  
Percentile statistics : 20191225.v01 (using entries in the PDB archive December 25th 2019)  
MapQ : 1.9.9  
Ideal geometry (proteins) : Engh & Huber (2001)  
Ideal geometry (DNA, RNA) : Parkinson et al. (1996)  
Validation Pipeline (wwPDB-VP) : 2.36

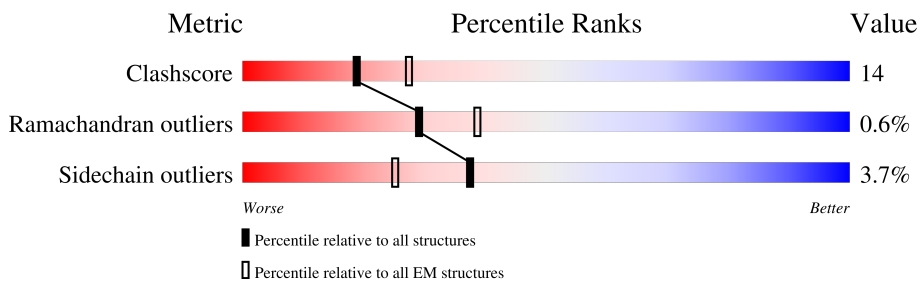
# 1 Overall quality at a glance

The following experimental techniques were used to determine the structure:

*ELECTRON MICROSCOPY*

The reported resolution of this entry is 3.40 Å.

Percentile scores (ranging between 0-100) for global validation metrics of the entry are shown in the following graphic. The table shows the number of entries on which the scores are based.




Metric	Whole archive (#Entries)	EM structures (#Entries)
Clashscore	158937	4297
Ramachandran outliers	154571	4023
Sidechain outliers	154315	3826

The table below summarises the geometric issues observed across the polymeric chains and their fit to the map. The red, orange, yellow and green segments of the bar indicate the fraction of residues that contain outliers for  $\geq 3$ , 2, 1 and 0 types of geometric quality criteria respectively. A grey segment represents the fraction of residues that are not modelled. The numeric value for each fraction is indicated below the corresponding segment, with a dot representing fractions  $\leq 5\%$ . The upper red bar (where present) indicates the fraction of residues that have poor fit to the EM map (all-atom inclusion  $< 40\%$ ). The numeric value is given above the bar.

Mol	Chain	Length	Quality of chain
1	A	1234	
1	B	1234	
1	D	1234	
2	H	135	
2	I	135	
2	J	135	
3	E	139	
3	F	139	

Continued on next page...

*Continued from previous page...*

Mol	Chain	Length	Quality of chain
3	G	139	 <p>A horizontal bar chart representing the quality of chain. The bar is divided into four segments: a red segment (19%), a green segment (48%), a yellow segment (34%), and a grey segment (15%). The segments are stacked from left to right in the order: red, green, yellow, grey. The percentages are labeled below each segment.</p>

## 2 Entry composition i

There are 4 unique types of molecules in this entry. The entry contains 17036 atoms, of which 0 are hydrogens and 0 are deuteriums.

In the tables below, the AltConf column contains the number of residues with at least one atom in alternate conformation and the Trace column contains the number of residues modelled with at most 2 atoms.

- Molecule 1 is a protein called Spike glycoprotein.

Mol	Chain	Residues	Atoms					AltConf	Trace
			Total	C	N	O	S		
1	A	476	3740	2393	622	709	16	0	0
1	B	476	3743	2394	624	709	16	0	0
1	D	480	3768	2409	629	714	16	0	0

There are 135 discrepancies between the modelled and reference sequences:

Chain	Residue	Modelled	Actual	Comment	Reference
A	614	GLY	ASP	conflict	UNP P0DTC2
A	682	ALA	ARG	conflict	UNP P0DTC2
A	683	GLY	ARG	conflict	UNP P0DTC2
A	817	PRO	PHE	conflict	UNP P0DTC2
A	892	PRO	ALA	conflict	UNP P0DTC2
A	899	PRO	ALA	conflict	UNP P0DTC2
A	942	PRO	ALA	conflict	UNP P0DTC2
A	986	PRO	LYS	conflict	UNP P0DTC2
A	987	PRO	VAL	conflict	UNP P0DTC2
A	1212	GLY	-	expression tag	UNP P0DTC2
A	1213	SER	-	expression tag	UNP P0DTC2
A	1214	GLY	-	expression tag	UNP P0DTC2
A	1215	TYR	-	expression tag	UNP P0DTC2
A	1216	ILE	-	expression tag	UNP P0DTC2
A	1217	PRO	-	expression tag	UNP P0DTC2
A	1218	GLU	-	expression tag	UNP P0DTC2
A	1219	ALA	-	expression tag	UNP P0DTC2
A	1220	PRO	-	expression tag	UNP P0DTC2
A	1221	ARG	-	expression tag	UNP P0DTC2
A	1222	ASP	-	expression tag	UNP P0DTC2
A	1223	GLY	-	expression tag	UNP P0DTC2
A	1224	GLN	-	expression tag	UNP P0DTC2
A	1225	ALA	-	expression tag	UNP P0DTC2
A	1226	TYR	-	expression tag	UNP P0DTC2

*Continued on next page...*

*Continued from previous page...*

Chain	Residue	Modelled	Actual	Comment	Reference
A	1227	VAL	-	expression tag	UNP P0DTC2
A	1228	ARG	-	expression tag	UNP P0DTC2
A	1229	LYS	-	expression tag	UNP P0DTC2
A	1230	ASP	-	expression tag	UNP P0DTC2
A	1231	GLY	-	expression tag	UNP P0DTC2
A	1232	GLU	-	expression tag	UNP P0DTC2
A	1233	TRP	-	expression tag	UNP P0DTC2
A	1234	VAL	-	expression tag	UNP P0DTC2
A	1235	LEU	-	expression tag	UNP P0DTC2
A	1236	LEU	-	expression tag	UNP P0DTC2
A	1237	SER	-	expression tag	UNP P0DTC2
A	1238	THR	-	expression tag	UNP P0DTC2
A	1239	PHE	-	expression tag	UNP P0DTC2
A	1240	LEU	-	expression tag	UNP P0DTC2
A	1241	GLY	-	expression tag	UNP P0DTC2
A	1242	HIS	-	expression tag	UNP P0DTC2
A	1243	HIS	-	expression tag	UNP P0DTC2
A	1244	HIS	-	expression tag	UNP P0DTC2
A	1245	HIS	-	expression tag	UNP P0DTC2
A	1246	HIS	-	expression tag	UNP P0DTC2
A	1247	HIS	-	expression tag	UNP P0DTC2
B	614	GLY	ASP	conflict	UNP P0DTC2
B	682	ALA	ARG	conflict	UNP P0DTC2
B	683	GLY	ARG	conflict	UNP P0DTC2
B	817	PRO	PHE	conflict	UNP P0DTC2
B	892	PRO	ALA	conflict	UNP P0DTC2
B	899	PRO	ALA	conflict	UNP P0DTC2
B	942	PRO	ALA	conflict	UNP P0DTC2
B	986	PRO	LYS	conflict	UNP P0DTC2
B	987	PRO	VAL	conflict	UNP P0DTC2
B	1212	GLY	-	expression tag	UNP P0DTC2
B	1213	SER	-	expression tag	UNP P0DTC2
B	1214	GLY	-	expression tag	UNP P0DTC2
B	1215	TYR	-	expression tag	UNP P0DTC2
B	1216	ILE	-	expression tag	UNP P0DTC2
B	1217	PRO	-	expression tag	UNP P0DTC2
B	1218	GLU	-	expression tag	UNP P0DTC2
B	1219	ALA	-	expression tag	UNP P0DTC2
B	1220	PRO	-	expression tag	UNP P0DTC2
B	1221	ARG	-	expression tag	UNP P0DTC2
B	1222	ASP	-	expression tag	UNP P0DTC2
B	1223	GLY	-	expression tag	UNP P0DTC2

*Continued on next page...*

*Continued from previous page...*

Chain	Residue	Modelled	Actual	Comment	Reference
B	1224	GLN	-	expression tag	UNP P0DTC2
B	1225	ALA	-	expression tag	UNP P0DTC2
B	1226	TYR	-	expression tag	UNP P0DTC2
B	1227	VAL	-	expression tag	UNP P0DTC2
B	1228	ARG	-	expression tag	UNP P0DTC2
B	1229	LYS	-	expression tag	UNP P0DTC2
B	1230	ASP	-	expression tag	UNP P0DTC2
B	1231	GLY	-	expression tag	UNP P0DTC2
B	1232	GLU	-	expression tag	UNP P0DTC2
B	1233	TRP	-	expression tag	UNP P0DTC2
B	1234	VAL	-	expression tag	UNP P0DTC2
B	1235	LEU	-	expression tag	UNP P0DTC2
B	1236	LEU	-	expression tag	UNP P0DTC2
B	1237	SER	-	expression tag	UNP P0DTC2
B	1238	THR	-	expression tag	UNP P0DTC2
B	1239	PHE	-	expression tag	UNP P0DTC2
B	1240	LEU	-	expression tag	UNP P0DTC2
B	1241	GLY	-	expression tag	UNP P0DTC2
B	1242	HIS	-	expression tag	UNP P0DTC2
B	1243	HIS	-	expression tag	UNP P0DTC2
B	1244	HIS	-	expression tag	UNP P0DTC2
B	1245	HIS	-	expression tag	UNP P0DTC2
B	1246	HIS	-	expression tag	UNP P0DTC2
B	1247	HIS	-	expression tag	UNP P0DTC2
D	614	GLY	ASP	conflict	UNP P0DTC2
D	682	ALA	ARG	conflict	UNP P0DTC2
D	683	GLY	ARG	conflict	UNP P0DTC2
D	817	PRO	PHE	conflict	UNP P0DTC2
D	892	PRO	ALA	conflict	UNP P0DTC2
D	899	PRO	ALA	conflict	UNP P0DTC2
D	942	PRO	ALA	conflict	UNP P0DTC2
D	986	PRO	LYS	conflict	UNP P0DTC2
D	987	PRO	VAL	conflict	UNP P0DTC2
D	1212	GLY	-	expression tag	UNP P0DTC2
D	1213	SER	-	expression tag	UNP P0DTC2
D	1214	GLY	-	expression tag	UNP P0DTC2
D	1215	TYR	-	expression tag	UNP P0DTC2
D	1216	ILE	-	expression tag	UNP P0DTC2
D	1217	PRO	-	expression tag	UNP P0DTC2
D	1218	GLU	-	expression tag	UNP P0DTC2
D	1219	ALA	-	expression tag	UNP P0DTC2
D	1220	PRO	-	expression tag	UNP P0DTC2

*Continued on next page...*

*Continued from previous page...*

Chain	Residue	Modelled	Actual	Comment	Reference
D	1221	ARG	-	expression tag	UNP P0DTC2
D	1222	ASP	-	expression tag	UNP P0DTC2
D	1223	GLY	-	expression tag	UNP P0DTC2
D	1224	GLN	-	expression tag	UNP P0DTC2
D	1225	ALA	-	expression tag	UNP P0DTC2
D	1226	TYR	-	expression tag	UNP P0DTC2
D	1227	VAL	-	expression tag	UNP P0DTC2
D	1228	ARG	-	expression tag	UNP P0DTC2
D	1229	LYS	-	expression tag	UNP P0DTC2
D	1230	ASP	-	expression tag	UNP P0DTC2
D	1231	GLY	-	expression tag	UNP P0DTC2
D	1232	GLU	-	expression tag	UNP P0DTC2
D	1233	TRP	-	expression tag	UNP P0DTC2
D	1234	VAL	-	expression tag	UNP P0DTC2
D	1235	LEU	-	expression tag	UNP P0DTC2
D	1236	LEU	-	expression tag	UNP P0DTC2
D	1237	SER	-	expression tag	UNP P0DTC2
D	1238	THR	-	expression tag	UNP P0DTC2
D	1239	PHE	-	expression tag	UNP P0DTC2
D	1240	LEU	-	expression tag	UNP P0DTC2
D	1241	GLY	-	expression tag	UNP P0DTC2
D	1242	HIS	-	expression tag	UNP P0DTC2
D	1243	HIS	-	expression tag	UNP P0DTC2
D	1244	HIS	-	expression tag	UNP P0DTC2
D	1245	HIS	-	expression tag	UNP P0DTC2
D	1246	HIS	-	expression tag	UNP P0DTC2
D	1247	HIS	-	expression tag	UNP P0DTC2

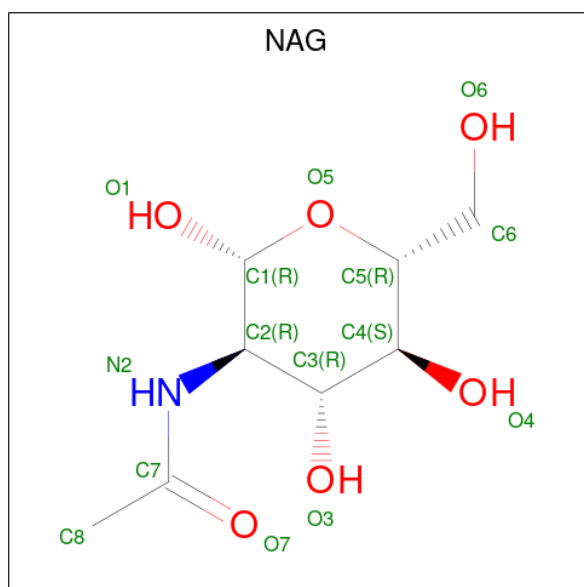
- Molecule 2 is a protein called Nanosota-5.

Mol	Chain	Residues	Atoms					AltConf	Trace
2	J	113	Total	C	N	O	S	0	0
			872	536	157	173	6		
2	H	113	Total	C	N	O	S	0	0
			872	536	157	173	6		
2	I	113	Total	C	N	O	S	0	0
			872	536	157	173	6		

- Molecule 3 is a protein called Nanosota-6.

Mol	Chain	Residues	Atoms					AltConf	Trace
3	F	118	Total	C	N	O	S	0	0
			893	559	158	172	4		
3	G	118	Total	C	N	O	S	0	0
			893	559	158	172	4		
3	E	118	Total	C	N	O	S	0	0
			893	559	158	172	4		

- Molecule 4 is 2-acetamido-2-deoxy-beta-D-glucopyranose (three-letter code: NAG) (formula:  $C_8H_{15}NO_6$ ).



Mol	Chain	Residues	Atoms				AltConf
4	A	1	Total	C	N	O	0
			14	8	1	5	
4	A	1	Total	C	N	O	0
			14	8	1	5	
4	A	1	Total	C	N	O	0
			14	8	1	5	
4	A	1	Total	C	N	O	0
			14	8	1	5	
4	A	1	Total	C	N	O	0
			14	8	1	5	
4	A	1	Total	C	N	O	0
			14	8	1	5	
4	A	1	Total	C	N	O	0
			14	8	1	5	

*Continued on next page...*



*Continued from previous page...*

Mol	Chain	Residues	Atoms				AltConf
			Total	C	N	O	
4	A	1	Total 14	C 8	N 1	O 5	0
4	A	1	Total 14	C 8	N 1	O 5	0
4	A	1	Total 14	C 8	N 1	O 5	0
4	A	1	Total 14	C 8	N 1	O 5	0
4	B	1	Total 14	C 8	N 1	O 5	0
4	B	1	Total 14	C 8	N 1	O 5	0
4	B	1	Total 14	C 8	N 1	O 5	0
4	B	1	Total 14	C 8	N 1	O 5	0
4	B	1	Total 14	C 8	N 1	O 5	0
4	B	1	Total 14	C 8	N 1	O 5	0
4	B	1	Total 14	C 8	N 1	O 5	0
4	B	1	Total 14	C 8	N 1	O 5	0
4	B	1	Total 14	C 8	N 1	O 5	0
4	B	1	Total 14	C 8	N 1	O 5	0
4	B	1	Total 14	C 8	N 1	O 5	0
4	B	1	Total 14	C 8	N 1	O 5	0
4	D	1	Total 14	C 8	N 1	O 5	0
4	D	1	Total 14	C 8	N 1	O 5	0
4	D	1	Total 14	C 8	N 1	O 5	0
4	D	1	Total 14	C 8	N 1	O 5	0
4	D	1	Total 14	C 8	N 1	O 5	0
4	D	1	Total 14	C 8	N 1	O 5	0

*Continued on next page...*

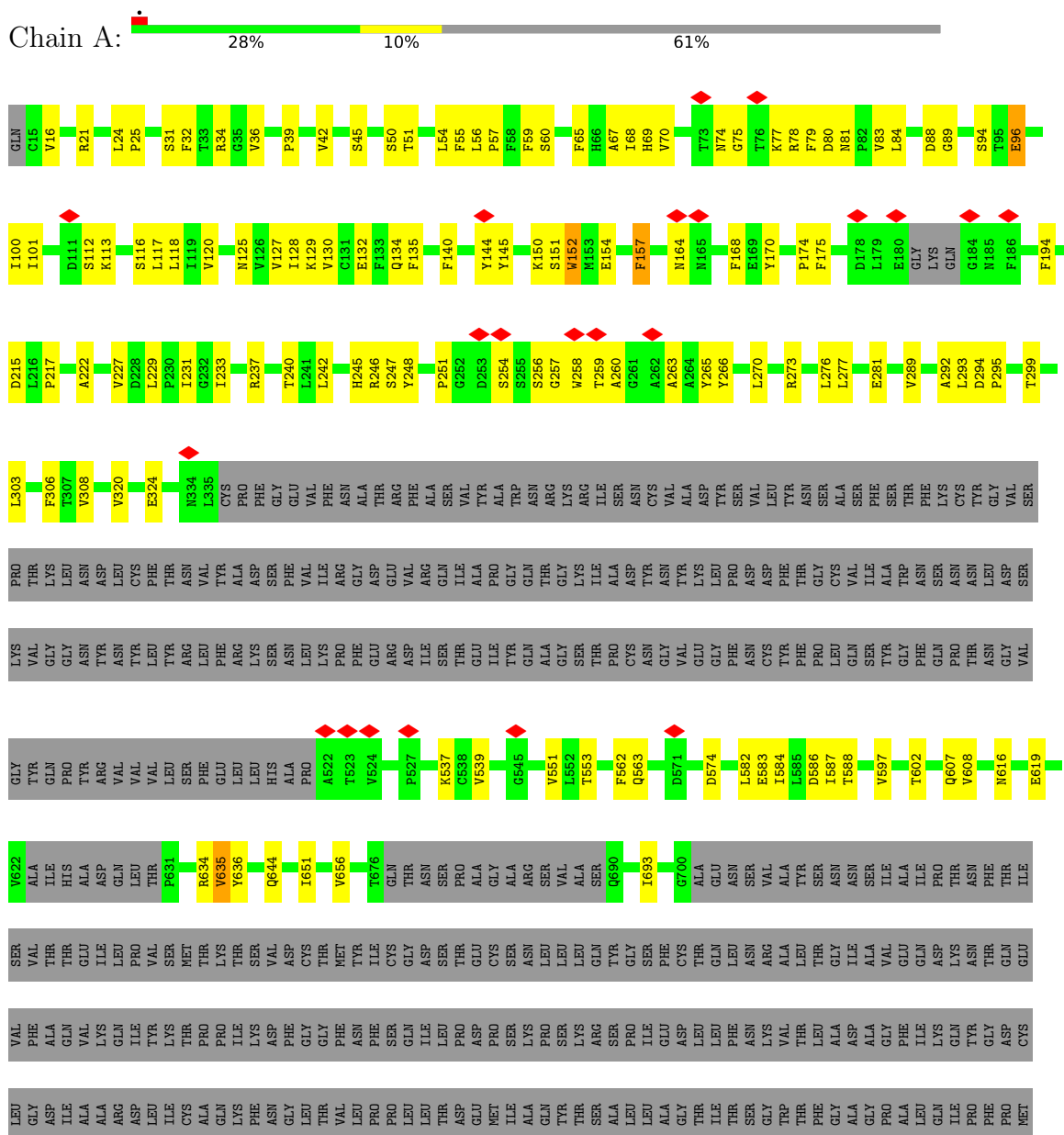
*Continued from previous page...*

Mol	Chain	Residues	Atoms				AltConf
			Total	C	N	O	
4	D	1	Total 14	8	1	5	0
4	D	1	Total 14	8	1	5	0
4	D	1	Total 14	8	1	5	0
4	D	1	Total 14	8	1	5	0
4	D	1	Total 14	8	1	5	0
4	D	1	Total 14	8	1	5	0

### 3 Residue-property plots [i](#)

These plots are drawn for all protein, RNA, DNA and oligosaccharide chains in the entry. The first graphic for a chain summarises the proportions of the various outlier classes displayed in the second graphic. The second graphic shows the sequence view annotated by issues in geometry and atom inclusion in map density. Residues are color-coded according to the number of geometric quality criteria for which they contain at least one outlier: green = 0, yellow = 1, orange = 2 and red = 3 or more. A red diamond above a residue indicates a poor fit to the EM map for this residue (all-atom inclusion < 40%). Stretches of 2 or more consecutive residues without any outlier are shown as a green connector. Residues present in the sample, but not in the model, are shown in grey.

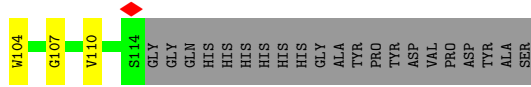
- Molecule 1: Spike glycoprotein



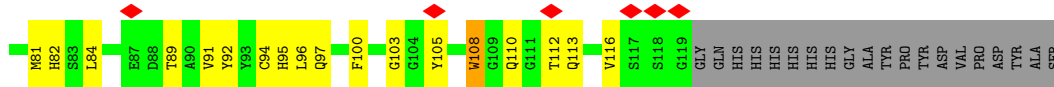
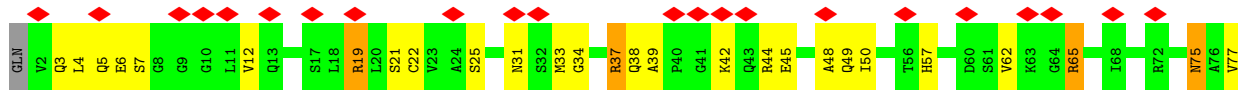




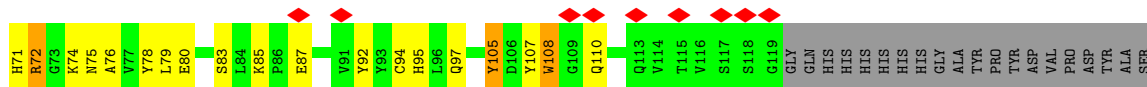
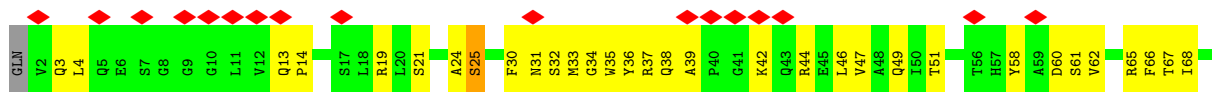




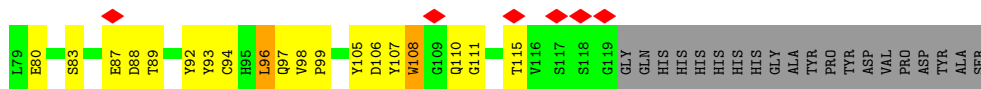
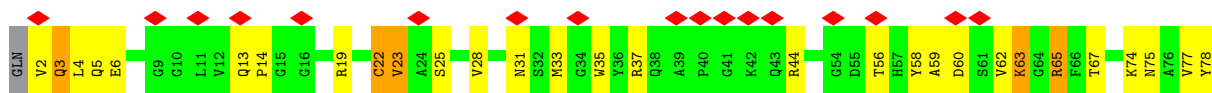
• Molecule 3: Nanosota-6



• Molecule 3: Nanosota-6



• Molecule 3: Nanosota-6



## 4 Experimental information

Property	Value	Source
EM reconstruction method	SINGLE PARTICLE	Depositor
Imposed symmetry	POINT, Not provided	
Number of particles used	30121	Depositor
Resolution determination method	FSC 0.143 CUT-OFF	Depositor
CTF correction method	PHASE FLIPPING AND AMPLITUDE CORRECTION	Depositor
Microscope	FEI TITAN KRIOS	Depositor
Voltage (kV)	300	Depositor
Electron dose ( $e^-/\text{\AA}^2$ )	50	Depositor
Minimum defocus (nm)	800	Depositor
Maximum defocus (nm)	2400	Depositor
Magnification	Not provided	
Image detector	GATAN K3 (6k x 4k)	Depositor
Maximum map value	1.292	Depositor
Minimum map value	-1.094	Depositor
Average map value	0.001	Depositor
Map value standard deviation	0.026	Depositor
Recommended contour level	0.0886	Depositor
Map size ( $\text{\AA}$ )	339.96786, 339.96786, 339.96786	wwPDB
Map dimensions	384, 384, 384	wwPDB
Map angles ( $^\circ$ )	90.0, 90.0, 90.0	wwPDB
Pixel spacing ( $\text{\AA}$ )	0.885333, 0.885333, 0.885333	Depositor



## 5 Model quality [i](#)

### 5.1 Standard geometry [i](#)

Bond lengths and bond angles in the following residue types are not validated in this section: NAG

The Z score for a bond length (or angle) is the number of standard deviations the observed value is removed from the expected value. A bond length (or angle) with  $|Z| > 5$  is considered an outlier worth inspection. RMSZ is the root-mean-square of all Z scores of the bond lengths (or angles).

Mol	Chain	Bond lengths		Bond angles	
		RMSZ	# Z  >5	RMSZ	# Z  >5
1	A	0.39	0/3831	0.56	0/5216
1	B	0.42	0/3834	0.57	0/5219
1	D	0.38	0/3860	0.57	0/5257
2	H	0.34	0/887	0.61	0/1197
2	I	0.36	0/887	0.56	0/1197
2	J	0.36	0/887	0.59	0/1197
3	E	0.38	0/914	0.64	0/1237
3	F	0.29	0/914	0.60	0/1237
3	G	0.30	0/914	0.57	0/1237
All	All	0.38	0/16928	0.58	0/22994

There are no bond length outliers.

There are no bond angle outliers.

There are no chirality outliers.

There are no planarity outliers.

### 5.2 Too-close contacts [i](#)

In the following table, the Non-H and H(model) columns list the number of non-hydrogen atoms and hydrogen atoms in the chain respectively. The H(added) column lists the number of hydrogen atoms added and optimized by MolProbity. The Clashes column lists the number of clashes within the asymmetric unit, whereas Symm-Clashes lists symmetry-related clashes.

Mol	Chain	Non-H	H(model)	H(added)	Clashes	Symm-Clashes
1	A	3740	0	3627	99	0
1	B	3743	0	3627	114	0
1	D	3768	0	3652	83	0
2	H	872	0	837	34	0

*Continued on next page...*

*Continued from previous page...*

Mol	Chain	Non-H	H(model)	H(added)	Clashes	Symm-Clashes
2	I	872	0	837	33	0
2	J	872	0	837	41	0
3	E	893	0	851	37	0
3	F	893	0	853	35	0
3	G	893	0	851	38	0
4	A	168	0	156	2	0
4	B	154	0	143	2	0
4	D	168	0	154	5	0
All	All	17036	0	16425	481	0

The all-atom clashscore is defined as the number of clashes found per 1000 atoms (including hydrogen atoms). The all-atom clashscore for this structure is 14.

All (481) close contacts within the same asymmetric unit are listed below, sorted by their clash magnitude.

Atom-1	Atom-2	Interatomic distance (Å)	Clash overlap (Å)
1:A:144:TYR:HB2	1:A:154:GLU:HB3	1.40	0.98
1:B:607:GLN:OE1	2:H:100:TRP:O	1.88	0.92
1:B:523:THR:N	1:B:527:PRO:HG3	1.86	0.91
1:D:650:LEU:HD21	1:D:653:ALA:HB3	1.60	0.83
2:I:4:LEU:HD23	2:I:4:LEU:H	1.45	0.81
1:A:69:HIS:N	1:A:78:ARG:O	2.16	0.79
3:F:4:LEU:HB2	3:F:110:GLN:HE22	1.47	0.78
2:J:32:GLU:HB2	2:J:53:ARG:HH21	1.49	0.78
1:D:323:THR:OG1	1:D:537:LYS:NZ	2.15	0.77
1:A:247:SER:H	1:A:251:PRO:HB3	1.53	0.74
1:A:635:VAL:HG21	1:A:651:ILE:HD12	1.69	0.74
2:J:63:VAL:HG13	2:J:67:PHE:HD2	1.50	0.74
1:A:42:VAL:O	1:D:563:GLN:NE2	2.20	0.74
2:H:40:ALA:HB3	2:H:43:LYS:HB3	1.70	0.74
1:B:27:ALA:HB3	1:B:64:TRP:HE1	1.54	0.73
1:B:96:GLU:OE1	1:B:100:ILE:N	2.20	0.73
1:B:607:GLN:OE1	2:H:100:TRP:C	2.27	0.73
1:D:231:ILE:HG22	1:D:233:ILE:H	1.55	0.72
1:B:124:THR:HB	1:B:175:PHE:H	1.55	0.71
1:D:582:LEU:O	1:D:582:LEU:HD12	1.90	0.71
3:E:3:GLN:HB3	3:E:4:LEU:HD12	1.72	0.71
1:A:31:SER:OG	1:A:60:SER:O	2.08	0.70
1:A:607:GLN:NE2	2:J:98:ARG:HD3	2.06	0.69
3:E:6:GLU:HG2	3:E:22:CYS:SG	2.33	0.69
1:B:32:PHE:HD2	1:B:218:GLN:HB3	1.58	0.69

*Continued on next page...*

*Continued from previous page...*

Atom-1	Atom-2	Interatomic distance (Å)	Clash overlap (Å)
1:B:616:ASN:OD1	1:B:617:CYS:N	2.25	0.69
1:D:77:LYS:HB2	1:D:246:ARG:HE	1.57	0.69
3:E:2:VAL:O	3:E:5:GLN:NE2	2.25	0.69
1:B:80:ASP:O	1:B:265:TYR:OH	2.09	0.68
2:J:12:VAL:HG21	2:J:85:LEU:HD12	1.75	0.68
2:J:21:SER:HB2	2:J:79:TYR:HE1	1.59	0.68
3:G:71:HIS:HB2	3:G:74:LYS:HG2	1.75	0.67
1:A:616:ASN:HB3	4:A:1303:NAG:HN2	1.59	0.67
2:I:67:PHE:HD2	2:I:82:MET:HB3	1.60	0.67
1:D:277:LEU:HD22	1:D:285:ILE:HD13	1.76	0.66
3:F:19:ARG:HH21	3:F:21:SER:HB3	1.60	0.66
1:B:523:THR:N	1:B:527:PRO:CG	2.57	0.66
1:A:112:SER:HB2	1:A:134:GLN:HE22	1.59	0.66
1:B:600:PRO:HD3	1:B:692:ILE:HD11	1.76	0.66
2:I:37:TYR:HD1	2:I:47:LEU:HA	1.60	0.66
1:D:70:VAL:HG13	1:D:75:GLY:HA2	1.78	0.66
2:J:63:VAL:HG13	2:J:67:PHE:CD2	2.30	0.66
1:A:562:PHE:O	1:B:41:LYS:NZ	2.29	0.66
1:A:34:ARG:NH2	1:A:217:PRO:O	2.29	0.65
1:D:97:LYS:NZ	1:D:184:GLY:O	2.27	0.65
3:F:89:THR:HG22	3:F:116:VAL:H	1.61	0.65
3:F:38:GLN:HB2	3:F:44:ARG:HG2	1.79	0.65
2:I:99:THR:HG23	2:I:100:TRP:H	1.62	0.64
1:B:633:TRP:O	1:B:634:ARG:NH1	2.29	0.64
1:A:634:ARG:NH2	1:A:636:TYR:OH	2.30	0.64
1:A:130:VAL:HG12	1:A:168:PHE:HB3	1.79	0.64
1:B:132:GLU:O	1:B:134:GLN:NE2	2.29	0.64
3:F:12:VAL:HG11	3:F:84:LEU:HD13	1.80	0.64
1:A:128:ILE:HG23	1:A:170:TYR:HB3	1.80	0.64
3:F:91:VAL:HG12	3:F:113:GLN:HG2	1.80	0.64
3:G:72:ARG:HH21	3:G:75:ASN:HD22	1.46	0.64
1:A:101:ILE:HD11	1:A:240:THR:OG1	1.98	0.63
1:B:129:LYS:NZ	1:B:169:GLU:OE1	2.32	0.63
1:D:125:ASN:HB2	1:D:172:SER:HB3	1.81	0.63
1:A:77:LYS:HE2	1:A:257:GLY:H	1.63	0.63
1:B:562:PHE:O	1:D:41:LYS:NZ	2.28	0.63
2:H:37:TYR:HD1	2:H:47:LEU:HA	1.63	0.63
2:H:81:GLN:NE2	2:H:83:ASN:OD1	2.31	0.62
2:J:99:THR:HG23	2:J:100:TRP:H	1.64	0.62
2:I:35:GLU:OE2	2:I:96:HIS:ND1	2.31	0.62
1:A:96:GLU:OE1	1:A:100:ILE:N	2.19	0.62

*Continued on next page...*

*Continued from previous page...*

Atom-1	Atom-2	Interatomic distance (Å)	Clash overlap (Å)
3:G:71:HIS:O	3:G:75:ASN:N	2.33	0.61
2:H:63:VAL:HG13	2:H:67:PHE:HE1	1.65	0.61
1:B:67:ALA:HB1	1:B:242:LEU:HD21	1.81	0.61
1:D:310:LYS:HE2	1:D:664:ILE:HD11	1.80	0.61
3:F:39:ALA:HB3	3:F:42:LYS:HE2	1.83	0.61
1:D:316:SER:OG	1:D:317:ASN:N	2.33	0.60
1:A:273:ARG:HH12	1:A:292:ALA:HB3	1.66	0.60
1:A:118:LEU:HD11	1:A:120:VAL:HB	1.84	0.60
1:D:77:LYS:HB2	1:D:246:ARG:NE	2.16	0.60
3:E:4:LEU:HG	3:E:25:SER:HB3	1.82	0.60
1:D:131:CYS:HB2	1:D:133:PHE:CE1	2.36	0.60
1:B:124:THR:HB	1:B:175:PHE:N	2.16	0.60
2:J:87:ASP:HA	2:J:112:VAL:HB	1.83	0.60
3:F:49:GLN:HB2	3:F:57:HIS:HB3	1.84	0.59
1:B:185:ASN:OD1	1:B:214:ARG:NH2	2.35	0.59
3:F:34:GLY:HA3	3:F:95:HIS:CE1	2.36	0.59
2:H:86:LYS:HG3	2:H:88:GLU:HG2	1.82	0.59
3:G:65:ARG:HG3	3:G:66:PHE:HD1	1.68	0.59
2:J:3:GLN:OE1	2:J:4:LEU:N	2.36	0.59
2:I:61:ASP:O	2:I:64:LYS:NZ	2.35	0.59
2:H:93:TYR:O	2:H:107:GLY:HA2	2.02	0.59
2:H:99:THR:HG22	2:H:100:TRP:H	1.67	0.58
3:F:75:ASN:C	3:F:75:ASN:HD22	2.03	0.58
1:D:607:GLN:NE2	2:I:98:ARG:CG	2.66	0.58
2:H:39:GLN:HG2	2:H:45:ARG:HB2	1.86	0.58
1:A:619:GLU:OE1	1:A:619:GLU:N	2.32	0.58
3:E:31:ASN:H	3:E:97:GLN:HB3	1.68	0.58
2:J:21:SER:HB2	2:J:79:TYR:CE1	2.38	0.58
1:A:59:PHE:HE1	2:J:53:ARG:CZ	2.16	0.58
1:A:54:LEU:HD12	1:A:270:LEU:HD22	1.85	0.58
1:D:132:GLU:HG3	4:D:1309:NAG:H62	1.86	0.58
1:B:634:ARG:HB3	1:B:636:TYR:HE1	1.68	0.58
1:D:583:GLU:OE1	1:D:584:ILE:N	2.35	0.58
1:D:78:ARG:NH1	1:D:79:PHE:O	2.36	0.58
3:G:33:MET:HE2	3:G:94:CYS:HB3	1.86	0.57
2:H:32:GLU:HA	2:H:53:ARG:HB2	1.86	0.57
2:J:37:TYR:HD1	2:J:47:LEU:HA	1.69	0.57
2:H:12:VAL:HG11	2:H:85:LEU:HD22	1.87	0.57
3:G:4:LEU:HA	3:G:25:SER:HB3	1.87	0.57
1:A:70:VAL:HG11	1:A:260:ALA:HB1	1.86	0.57
1:D:105:ILE:HG13	1:D:241:LEU:HD11	1.87	0.56

*Continued on next page...*

*Continued from previous page...*

Atom-1	Atom-2	Interatomic distance (Å)	Clash overlap (Å)
1:D:327:VAL:H	1:D:531:THR:HG22	1.69	0.56
1:A:80:ASP:O	1:A:265:TYR:OH	2.20	0.56
1:B:298:GLU:OE2	1:B:633:TRP:NE1	2.38	0.56
1:D:636:TYR:HE1	2:I:2:VAL:HG12	1.69	0.56
2:J:59:TYR:HB3	2:J:63:VAL:HB	1.87	0.56
3:G:34:GLY:HA3	3:G:95:HIS:NE2	2.20	0.56
3:F:75:ASN:O	3:F:75:ASN:ND2	2.28	0.56
3:E:75:ASN:O	3:E:75:ASN:ND2	2.38	0.56
1:A:246:ARG:HB2	1:A:251:PRO:CB	2.36	0.56
1:B:607:GLN:OE1	2:H:101:THR:HA	2.05	0.56
1:D:676:THR:HA	1:D:690:GLN:HG2	1.87	0.56
3:E:33:MET:HG3	3:E:77:VAL:HG11	1.88	0.56
1:A:563:GLN:NE2	1:B:42:VAL:O	2.38	0.56
2:J:35:GLU:HG2	2:J:96:HIS:HB3	1.88	0.56
2:H:59:TYR:HB3	2:H:63:VAL:HB	1.88	0.56
2:I:59:TYR:HB3	2:I:63:VAL:HB	1.88	0.56
2:H:33:LEU:HD13	2:H:98:ARG:HH11	1.71	0.56
1:B:206:LYS:HB3	1:B:223:LEU:HG	1.88	0.55
2:J:82:MET:HB2	2:J:85:LEU:HD21	1.89	0.55
1:A:74:ASN:O	1:A:254:SER:OG	2.23	0.55
1:B:329:PHE:N	1:B:330:PRO:HD2	2.21	0.55
3:E:13:GLN:HG2	3:E:14:PRO:HD2	1.87	0.55
3:G:19:ARG:HD3	3:G:80:GLU:OE1	2.07	0.55
3:G:38:GLN:HB2	3:G:44:ARG:HG2	1.87	0.55
2:I:82:MET:HB2	2:I:85:LEU:HD21	1.88	0.55
1:B:277:LEU:HD22	1:B:285:ILE:HD13	1.88	0.55
1:B:643:PHE:HE1	1:B:645:THR:HG22	1.71	0.55
2:J:86:LYS:HG3	2:J:88:GLU:HG2	1.88	0.55
3:F:4:LEU:HD22	3:F:25:SER:HB3	1.88	0.55
1:A:583:GLU:OE2	1:A:584:ILE:N	2.40	0.55
1:B:310:LYS:HG3	1:B:600:PRO:HA	1.89	0.55
1:A:294:ASP:OD1	1:A:294:ASP:N	2.39	0.54
1:D:188:ASN:OD1	1:D:189:LEU:N	2.40	0.54
2:I:28:ILE:HA	2:I:31:MET:HG2	1.90	0.54
1:B:95:THR:HG22	1:B:266:TYR:HE1	1.71	0.54
2:H:100:TRP:CE3	2:H:101:THR:HG23	2.43	0.54
1:D:45:SER:OG	1:D:281:GLU:O	2.24	0.54
1:A:70:VAL:HA	1:A:77:LYS:HA	1.90	0.54
3:G:24:ALA:HB2	3:G:76:ALA:HA	1.90	0.54
2:H:33:LEU:HD13	2:H:98:ARG:NH1	2.23	0.54
1:B:70:VAL:HG12	1:B:77:LYS:HG2	1.88	0.54

*Continued on next page...*

*Continued from previous page...*

Atom-1	Atom-2	Interatomic distance (Å)	Clash overlap (Å)
1:A:168:PHE:HE1	1:A:170:TYR:HB2	1.72	0.53
1:D:158:ARG:NH1	1:D:248:TYR:OH	2.35	0.53
1:A:128:ILE:CG2	1:A:170:TYR:HB3	2.38	0.53
1:A:227:VAL:HG21	3:E:105:TYR:OH	2.09	0.53
1:B:582:LEU:HD11	3:F:5:GLN:HB3	1.90	0.53
1:D:103:GLY:HA3	1:D:120:VAL:HA	1.90	0.53
3:G:37:ARG:NH2	3:G:87:GLU:O	2.36	0.53
1:B:57:PRO:HG3	1:B:273:ARG:HD2	1.90	0.53
1:A:118:LEU:O	1:A:128:ILE:HA	2.08	0.53
3:F:84:LEU:HB3	3:F:116:VAL:HG11	1.91	0.53
3:G:31:ASN:N	3:G:97:GLN:OE1	2.39	0.53
3:E:19:ARG:HD2	3:E:80:GLU:HB3	1.91	0.53
1:B:30:ASN:ND2	2:H:29:PHE:HB2	2.24	0.53
1:B:323:THR:OG1	1:B:324:GLU:OE1	2.27	0.52
1:B:607:GLN:NE2	2:H:99:THR:O	2.37	0.52
1:A:607:GLN:HE21	2:J:98:ARG:HD3	1.71	0.52
1:D:81:ASN:N	1:D:81:ASN:OD1	2.42	0.52
1:A:308:VAL:O	1:A:602:THR:OG1	2.26	0.52
1:B:239:GLN:HG2	1:B:240:THR:H	1.74	0.52
2:I:93:TYR:O	2:I:107:GLY:HA2	2.09	0.52
1:D:635:VAL:HB	1:D:651:ILE:HD11	1.90	0.52
1:A:551:VAL:HG13	1:A:588:THR:HB	1.91	0.52
1:B:75:GLY:HA3	1:B:253:ASP:HB2	1.91	0.52
1:B:330:PRO:HG3	1:B:529:LYS:HA	1.91	0.52
3:G:83:SER:HB3	3:G:85:LYS:HZ1	1.73	0.52
1:A:132:GLU:N	1:A:164:ASN:O	2.41	0.52
1:B:138:ASP:OD1	1:B:138:ASP:N	2.43	0.52
1:B:113:LYS:HG3	1:B:114:THR:HG23	1.92	0.51
2:I:28:ILE:HG23	2:I:76:ASN:HB2	1.90	0.51
3:E:4:LEU:HD11	3:E:28:VAL:HG21	1.92	0.51
1:A:21:ARG:HD2	1:A:78:ARG:HE	1.75	0.51
1:A:246:ARG:HB3	1:A:256:SER:HB3	1.91	0.51
3:E:65:ARG:NH2	3:E:88:ASP:OD2	2.28	0.51
1:D:130:VAL:HG21	1:D:231:ILE:HD11	1.92	0.51
3:G:21:SER:HB3	3:G:78:TYR:CE1	2.46	0.51
1:B:553:THR:HG23	1:B:586:ASP:OD1	2.11	0.51
1:A:55:PHE:HA	1:A:270:LEU:HD23	1.92	0.51
2:I:86:LYS:NZ	2:I:88:GLU:OE2	2.38	0.51
1:B:210:ILE:HD12	1:B:211:ASN:H	1.75	0.51
1:B:643:PHE:CE1	1:B:645:THR:HG22	2.45	0.51
2:I:21:SER:O	2:I:21:SER:OG	2.25	0.51

*Continued on next page...*

*Continued from previous page...*

Atom-1	Atom-2	Interatomic distance (Å)	Clash overlap (Å)
1:A:231:ILE:HG22	1:A:233:ILE:HG13	1.92	0.51
1:B:153:MET:CE	1:B:180:GLU:HA	2.41	0.51
3:F:94:CYS:O	3:F:108:TRP:HA	2.10	0.51
1:A:96:GLU:OE2	1:A:101:ILE:HG22	2.11	0.50
1:A:127:VAL:HG21	4:A:1310:NAG:H62	1.92	0.50
1:A:247:SER:O	1:A:251:PRO:HG3	2.11	0.50
1:A:24:LEU:HG	1:A:25:PRO:HD2	1.92	0.50
1:B:122:ASN:O	1:B:124:THR:N	2.44	0.50
1:B:525:CYS:SG	1:B:526:GLY:N	2.84	0.50
1:B:632:THR:OG1	1:B:633:TRP:N	2.41	0.50
1:A:36:VAL:O	1:A:222:ALA:HA	2.12	0.50
1:A:81:ASN:OD1	1:A:81:ASN:N	2.44	0.50
1:D:140:PHE:CE2	1:D:244:LEU:HD22	2.45	0.50
2:H:67:PHE:HB3	2:H:82:MET:HA	1.94	0.50
1:A:295:PRO:HB2	1:A:608:VAL:HG11	1.93	0.50
3:G:32:SER:O	3:G:97:GLN:HB2	2.12	0.50
1:B:308:VAL:H	1:B:602:THR:HG21	1.76	0.50
2:I:2:VAL:HG21	2:I:31:MET:HE3	1.94	0.50
3:E:89:THR:HG23	3:E:115:THR:HA	1.94	0.50
1:A:303:LEU:HD12	1:A:308:VAL:HG12	1.93	0.50
1:B:253:ASP:OD1	1:B:253:ASP:N	2.45	0.50
3:E:56:THR:HB	3:E:58:TYR:CZ	2.47	0.50
1:A:616:ASN:HA	1:A:644:GLN:HE22	1.77	0.50
1:B:641:ASN:HD22	1:B:690:GLN:NE2	2.09	0.50
2:H:63:VAL:HG13	2:H:67:PHE:CE1	2.46	0.50
1:A:145:TYR:HA	1:A:152:TRP:O	2.11	0.49
3:G:24:ALA:HB1	3:G:75:ASN:OD1	2.12	0.49
1:B:320:VAL:HG13	1:B:623:ALA:HB1	1.94	0.49
1:D:607:GLN:OE1	2:I:100:TRP:O	2.29	0.49
2:J:28:ILE:HG23	2:J:76:ASN:HB2	1.93	0.49
2:J:76:ASN:N	2:J:76:ASN:OD1	2.45	0.49
3:F:7:SER:HA	3:F:112:THR:HG22	1.94	0.49
2:J:32:GLU:HA	2:J:53:ARG:HB2	1.95	0.49
1:B:227:VAL:HG21	3:G:105:TYR:OH	2.13	0.49
1:D:271:GLN:OE1	1:D:273:ARG:NE	2.45	0.49
1:A:65:PHE:CZ	1:A:84:LEU:HD21	2.47	0.49
3:F:37:ARG:HG3	3:F:92:TYR:HE1	1.78	0.49
2:H:35:GLU:OE1	2:H:96:HIS:ND1	2.45	0.49
3:F:4:LEU:CB	3:F:110:GLN:HE22	2.20	0.49
3:E:35:TRP:CZ3	3:E:92:TYR:HB3	2.47	0.49
3:E:67:THR:OG1	3:E:80:GLU:HG3	2.12	0.49

*Continued on next page...*



*Continued from previous page...*

Atom-1	Atom-2	Interatomic distance (Å)	Clash overlap (Å)
1:B:96:GLU:HB2	1:B:263:ALA:HB1	1.95	0.49
1:B:537:LYS:O	1:B:539:VAL:HG13	2.13	0.48
2:H:93:TYR:O	2:H:107:GLY:CA	2.61	0.48
2:H:98:ARG:O	2:H:98:ARG:HG3	2.13	0.48
1:B:318:PHE:HD1	1:B:624:ILE:HD12	1.77	0.48
1:B:329:PHE:O	1:B:330:PRO:C	2.51	0.48
3:F:22:CYS:SG	3:F:77:VAL:HG13	2.52	0.48
3:G:65:ARG:HG3	3:G:66:PHE:CD1	2.46	0.48
3:E:37:ARG:NH2	3:E:87:GLU:O	2.46	0.48
1:A:116:SER:HG	1:A:135:PHE:HE2	1.62	0.48
2:J:9:GLY:HA3	2:J:108:THR:HA	1.93	0.48
2:H:38:HIS:ND1	2:H:48:VAL:HG23	2.28	0.48
1:A:89:GLY:HA2	1:A:194:PHE:O	2.13	0.48
1:D:274:THR:HG23	1:D:291:CYS:HB2	1.94	0.48
1:A:78:ARG:NH1	1:A:79:PHE:O	2.41	0.48
1:B:96:GLU:OE2	1:B:101:ILE:HG22	2.14	0.48
1:D:170:TYR:OH	3:F:105:TYR:HA	2.13	0.48
2:J:21:SER:O	2:J:21:SER:OG	2.31	0.48
3:F:84:LEU:HD22	3:F:116:VAL:HG21	1.96	0.48
3:G:25:SER:O	3:G:25:SER:OG	2.31	0.48
2:I:63:VAL:HA	2:I:67:PHE:HE1	1.78	0.48
1:B:662:CYS:HB2	1:B:671:CYS:HB2	1.46	0.48
3:E:33:MET:CE	3:E:33:MET:HA	2.44	0.48
1:B:661:GLU:OE1	1:B:661:GLU:N	2.44	0.48
1:A:56:LEU:HD12	1:A:57:PRO:HD2	1.96	0.47
1:B:634:ARG:HB3	1:B:636:TYR:CE1	2.49	0.47
1:B:153:MET:SD	1:B:153:MET:N	2.86	0.47
1:B:632:THR:HG23	1:B:634:ARG:HH12	1.78	0.47
1:A:96:GLU:HB2	1:A:263:ALA:HB1	1.95	0.47
1:B:128:ILE:HG21	1:B:229:LEU:HD21	1.96	0.47
1:D:157:PHE:HD2	1:D:159:VAL:HG23	1.79	0.47
1:D:537:LYS:O	1:D:539:VAL:HG13	2.14	0.47
3:E:96:LEU:HD13	3:E:107:TYR:HB2	1.96	0.47
1:D:619:GLU:OE1	1:D:619:GLU:N	2.47	0.47
1:A:120:VAL:HG11	1:A:157:PHE:HZ	1.80	0.47
1:B:206:LYS:HE2	1:B:221:SER:HB2	1.96	0.47
1:D:132:GLU:HG3	4:D:1309:NAG:C6	2.44	0.47
1:D:295:PRO:O	1:D:299:THR:HG23	2.14	0.47
3:G:68:ILE:HD13	3:G:79:LEU:HD13	1.97	0.47
1:B:32:PHE:CD2	1:B:218:GLN:HB3	2.44	0.47
1:B:177:MET:SD	1:B:177:MET:N	2.87	0.47

*Continued on next page...*



*Continued from previous page...*

Atom-1	Atom-2	Interatomic distance (Å)	Clash overlap (Å)
1:A:59:PHE:HD2	1:A:293:LEU:HD11	1.79	0.47
1:A:553:THR:OG1	1:A:586:ASP:OD1	2.26	0.47
1:D:144:TYR:HB2	1:D:154:GLU:HG2	1.95	0.47
2:H:33:LEU:HD23	2:H:34:MET:N	2.30	0.47
1:A:607:GLN:NE2	2:J:98:ARG:CD	2.77	0.47
1:D:290:ASP:O	1:D:297:SER:HB3	2.15	0.47
3:E:5:GLN:O	3:E:23:VAL:HG22	2.15	0.47
1:B:603:ASN:OD1	4:B:1302:NAG:N2	2.48	0.46
2:I:38:HIS:CE1	2:I:46:GLU:HG3	2.50	0.46
2:J:28:ILE:HA	2:J:31:MET:HG2	1.97	0.46
2:I:100:TRP:CE3	2:I:101:THR:HG23	2.50	0.46
3:E:96:LEU:H	3:E:106:ASP:HB2	1.80	0.46
1:A:574:ASP:O	1:A:587:ILE:N	2.40	0.46
3:F:33:MET:HE3	3:F:96:LEU:HA	1.96	0.46
1:A:59:PHE:CE1	2:J:53:ARG:CZ	2.98	0.46
2:I:90:THR:HA	2:I:110:VAL:O	2.16	0.46
1:B:100:ILE:HD11	1:B:258:TRP:HD1	1.80	0.46
1:B:281:GLU:OE2	4:B:1309:NAG:N2	2.49	0.46
1:B:523:THR:N	1:B:527:PRO:HB3	2.30	0.46
1:B:599:THR:OG1	1:B:600:PRO:O	2.31	0.46
1:D:607:GLN:HE22	2:I:98:ARG:CG	2.29	0.46
2:J:20:LEU:HD11	2:J:82:MET:SD	2.55	0.46
1:B:77:LYS:NZ	1:B:253:ASP:O	2.31	0.46
1:D:231:ILE:HG22	1:D:233:ILE:N	2.27	0.46
3:G:13:GLN:HG2	3:G:14:PRO:HD2	1.97	0.46
3:E:25:SER:O	3:E:25:SER:OG	2.30	0.46
1:B:586:ASP:OD1	1:B:586:ASP:N	2.43	0.46
1:D:212:LEU:HA	1:D:214:ARG:HH12	1.81	0.46
1:B:144:TYR:O	1:B:153:MET:HA	2.16	0.45
1:D:124:THR:O	1:D:176:LEU:HD12	2.16	0.45
2:J:87:ASP:HB2	2:J:114:SER:HB2	1.98	0.45
1:A:125:ASN:HB3	1:A:174:PRO:HA	1.98	0.45
3:E:3:GLN:N	3:E:3:GLN:OE1	2.49	0.45
3:E:94:CYS:O	3:E:108:TRP:HA	2.16	0.45
1:B:79:PHE:HZ	1:B:244:LEU:HB2	1.81	0.45
1:A:50:SER:O	1:A:50:SER:OG	2.33	0.45
1:B:179:LEU:O	1:B:180:GLU:C	2.55	0.45
1:B:523:THR:HG23	1:B:524:VAL:H	1.81	0.45
1:D:607:GLN:HE22	2:I:98:ARG:HG2	1.82	0.45
2:H:11:LEU:HA	2:H:111:THR:HG23	1.99	0.45
1:A:45:SER:OG	1:A:281:GLU:O	2.33	0.45

*Continued on next page...*

*Continued from previous page...*

Atom-1	Atom-2	Interatomic distance (Å)	Clash overlap (Å)
1:B:70:VAL:HB	1:B:72:GLY:O	2.17	0.45
1:D:135:PHE:HE1	1:D:159:VAL:HG12	1.79	0.45
1:D:246:ARG:HB3	1:D:256:SER:HB3	1.97	0.45
1:B:315:THR:OG1	1:B:316:SER:N	2.49	0.45
1:D:328:ARG:NE	1:D:578:ASP:OD2	2.39	0.45
2:J:59:TYR:OH	2:J:69:ILE:HG22	2.17	0.45
1:A:229:LEU:HB3	1:A:231:ILE:HG12	1.98	0.45
1:D:310:LYS:NZ	1:D:663:ASP:OD2	2.28	0.45
3:G:60:ASP:OD1	3:G:61:SER:N	2.50	0.45
1:B:100:ILE:HD11	1:B:258:TRP:CD1	2.52	0.45
1:B:555:SER:HB3	1:B:586:ASP:CG	2.37	0.45
1:D:36:VAL:HG11	1:D:277:LEU:HD21	1.99	0.45
3:G:31:ASN:O	3:G:51:THR:HA	2.17	0.45
2:I:67:PHE:CD1	2:I:67:PHE:N	2.84	0.45
1:B:109:THR:OG1	1:B:111:ASP:OD1	2.31	0.45
1:D:148:ASN:HB2	4:D:1311:NAG:O7	2.17	0.45
2:H:90:THR:HA	2:H:110:VAL:O	2.17	0.45
3:G:47:VAL:HG13	3:G:62:VAL:HG11	1.98	0.44
2:H:66:ARG:NH2	2:H:84:SER:O	2.49	0.44
1:A:75:GLY:O	1:A:77:LYS:HG2	2.17	0.44
1:B:14:GLN:HB3	1:B:15:CYS:H	1.57	0.44
1:B:227:VAL:HG21	3:G:105:TYR:CZ	2.52	0.44
2:J:31:MET:O	2:J:32:GLU:HB3	2.16	0.44
1:B:295:PRO:HG2	2:H:100:TRP:CE3	2.53	0.44
1:D:617:CYS:HB3	1:D:649:CYS:HB2	1.66	0.44
3:F:65:ARG:HB2	3:F:82:HIS:O	2.18	0.44
3:E:5:GLN:HG3	3:E:110:GLN:OE1	2.17	0.44
3:E:98:VAL:HA	3:E:99:PRO:HD3	1.82	0.44
1:B:78:ARG:NH1	1:B:79:PHE:O	2.51	0.44
3:F:31:ASN:N	3:F:97:GLN:OE1	2.51	0.44
1:A:215:ASP:N	1:A:215:ASP:OD1	2.50	0.44
1:B:295:PRO:HB2	1:B:608:VAL:HG21	1.99	0.44
1:D:21:ARG:HA	1:D:78:ARG:NE	2.32	0.44
1:D:575:ALA:HA	1:D:586:ASP:HA	1.99	0.44
3:F:33:MET:HE3	3:F:33:MET:HA	1.99	0.44
1:D:201:PHE:HD2	1:D:203:ILE:HD11	1.81	0.44
1:A:258:TRP:HD1	1:A:259:THR:HG23	1.83	0.44
1:B:53:ASP:HB3	1:B:55:PHE:CE1	2.53	0.44
1:D:122:ASN:HD22	4:D:1302:NAG:H83	1.83	0.44
2:I:4:LEU:H	2:I:4:LEU:CD2	2.23	0.44
1:A:68:ILE:O	1:A:70:VAL:N	2.50	0.44

*Continued on next page...*

*Continued from previous page...*

Atom-1	Atom-2	Interatomic distance (Å)	Clash overlap (Å)
2:J:20:LEU:HD12	2:J:80:LEU:O	2.18	0.43
3:E:31:ASN:ND2	3:E:97:GLN:OE1	2.49	0.43
3:E:60:ASP:HA	3:E:63:LYS:NZ	2.33	0.43
1:A:582:LEU:HD11	3:G:24:ALA:O	2.18	0.43
2:H:75:LYS:HD2	2:H:75:LYS:HA	1.87	0.43
2:H:96:HIS:HE1	2:H:98:ARG:NH2	2.17	0.43
1:D:119:ILE:HG22	1:D:119:ILE:O	2.18	0.43
1:D:662:CYS:HB2	1:D:671:CYS:HB2	1.43	0.43
1:A:242:LEU:HD12	1:A:242:LEU:HA	1.76	0.43
1:B:179:LEU:HD23	1:B:258:TRP:HH2	1.83	0.43
1:B:638:THR:HB	1:B:641:ASN:ND2	2.32	0.43
1:B:690:GLN:N	1:B:690:GLN:OE1	2.51	0.43
1:D:128:ILE:HG21	1:D:229:LEU:HD11	2.00	0.43
3:G:83:SER:O	3:G:85:LYS:NZ	2.47	0.43
1:A:70:VAL:HG23	1:A:77:LYS:HB3	2.01	0.43
1:A:36:VAL:HG11	1:A:277:LEU:HD21	2.00	0.43
1:A:607:GLN:HE22	2:J:98:ARG:HG2	1.83	0.43
1:B:226:LEU:O	3:G:107:TYR:OH	2.36	0.43
1:B:242:LEU:HD12	1:B:242:LEU:HA	1.89	0.43
1:D:675:GLN:O	1:D:690:GLN:HA	2.19	0.43
3:F:33:MET:HB2	3:F:50:ILE:HG23	2.01	0.43
1:B:105:ILE:HG23	1:B:241:LEU:HD21	2.01	0.43
1:B:117:LEU:HD21	1:B:119:ILE:HD11	2.01	0.43
1:B:153:MET:HE3	1:B:180:GLU:HA	2.01	0.43
3:G:35:TRP:CZ3	3:G:92:TYR:HB3	2.54	0.43
1:D:631:PRO:HB2	1:D:633:TRP:NE1	2.34	0.43
1:B:317:ASN:OD1	1:B:317:ASN:N	2.52	0.43
2:J:89:ASP:OD1	2:J:93:TYR:OH	2.37	0.43
1:A:258:TRP:CD1	1:A:259:THR:HG23	2.54	0.42
1:D:656:VAL:HG12	1:D:658:ASN:H	1.84	0.42
3:E:60:ASP:HA	3:E:63:LYS:HZ3	1.84	0.42
1:D:607:GLN:OE1	2:I:101:THR:HA	2.19	0.42
1:B:79:PHE:CZ	1:B:244:LEU:HB2	2.53	0.42
1:D:26:PRO:HB2	1:D:28:TYR:CE1	2.54	0.42
3:F:62:VAL:HA	3:F:65:ARG:HD3	2.01	0.42
3:E:6:GLU:HB2	3:E:110:GLN:O	2.19	0.42
1:A:276:LEU:HB3	1:A:289:VAL:HG23	2.01	0.42
1:A:607:GLN:HE22	2:J:98:ARG:CG	2.31	0.42
3:G:110:GLN:H	3:G:110:GLN:HG2	1.69	0.42
1:D:140:PHE:HE2	1:D:244:LEU:HD22	1.85	0.42
3:G:30:PHE:CE2	3:G:33:MET:HB2	2.55	0.42

*Continued on next page...*

*Continued from previous page...*

Atom-1	Atom-2	Interatomic distance (Å)	Clash overlap (Å)
1:A:16:VAL:HG11	1:A:248:TYR:CG	2.54	0.42
1:A:54:LEU:HD22	1:A:88:ASP:OD1	2.20	0.42
1:A:113:LYS:HD2	1:A:113:LYS:HA	1.87	0.42
3:G:83:SER:HB3	3:G:85:LYS:NZ	2.34	0.42
1:A:656:VAL:HG21	1:A:693:ILE:HD12	2.02	0.42
1:D:615:VAL:HG22	1:D:616:ASN:O	2.18	0.42
1:D:631:PRO:HB2	1:D:633:TRP:HE1	1.85	0.42
3:F:33:MET:HA	3:F:33:MET:CE	2.50	0.42
3:G:44:ARG:HD2	3:G:108:TRP:CH2	2.55	0.42
3:E:19:ARG:NH2	3:E:78:TYR:HB3	2.34	0.42
2:H:90:THR:HG23	2:H:111:THR:HA	2.01	0.42
2:I:32:GLU:HA	2:I:53:ARG:HB2	2.02	0.42
1:D:231:ILE:CG2	1:D:233:ILE:HG12	2.50	0.42
2:J:66:ARG:HG3	2:J:83:ASN:O	2.19	0.42
1:B:201:PHE:O	1:B:203:ILE:HG13	2.20	0.41
1:B:321:GLN:HG2	1:B:625:HIS:NE2	2.34	0.41
1:D:89:GLY:HA2	1:D:194:PHE:O	2.19	0.41
1:D:112:SER:HB2	1:D:134:GLN:NE2	2.35	0.41
2:J:59:TYR:HB2	2:J:64:LYS:HZ2	1.84	0.41
3:F:6:GLU:OE1	3:F:94:CYS:HB3	2.19	0.41
3:F:110:GLN:H	3:F:110:GLN:HG2	1.55	0.41
1:A:67:ALA:HB1	1:A:242:LEU:HD21	2.02	0.41
1:A:77:LYS:HD2	1:A:246:ARG:NH1	2.35	0.41
1:A:83:VAL:CG1	1:A:237:ARG:HD2	2.51	0.41
3:G:46:LEU:HD11	3:G:49:GLN:HG3	2.02	0.41
2:I:38:HIS:ND1	2:I:46:GLU:O	2.53	0.41
1:B:139:PRO:HB2	1:B:241:LEU:HD12	2.03	0.41
1:B:312:ILE:HG22	1:B:598:ILE:HG12	2.01	0.41
1:B:555:SER:OG	1:B:584:ILE:O	2.32	0.41
1:D:144:TYR:OH	1:D:247:SER:HA	2.19	0.41
1:D:582:LEU:CD1	3:E:25:SER:HA	2.50	0.41
3:F:48:ALA:O	3:F:49:GLN:NE2	2.53	0.41
1:A:168:PHE:CE1	1:A:170:TYR:HB2	2.55	0.41
1:A:537:LYS:O	1:A:539:VAL:HG13	2.20	0.41
1:A:308:VAL:N	1:A:602:THR:OG1	2.47	0.41
1:A:607:GLN:OE1	2:J:100:TRP:O	2.39	0.41
1:B:53:ASP:OD1	1:B:54:LEU:N	2.46	0.41
1:B:139:PRO:HB2	1:B:241:LEU:CD1	2.51	0.41
1:B:147:LYS:HD2	1:B:147:LYS:HA	1.93	0.41
1:D:599:THR:HB	1:D:608:VAL:HG12	2.02	0.41
1:D:631:PRO:HB2	1:D:633:TRP:CD1	2.56	0.41

*Continued on next page...*

*Continued from previous page...*

Atom-1	Atom-2	Interatomic distance (Å)	Clash overlap (Å)
2:J:60:SER:OG	2:J:61:ASP:N	2.54	0.41
2:H:4:LEU:HD12	2:H:24:ALA:HB2	2.03	0.41
3:E:93:TYR:CD1	3:E:111:GLY:HA3	2.55	0.41
1:A:273:ARG:NH1	1:A:292:ALA:HB3	2.32	0.41
3:G:58:TYR:OH	3:G:67:THR:HA	2.20	0.41
2:I:2:VAL:HG13	2:I:103:TYR:CE2	2.56	0.41
2:I:96:HIS:HE1	2:I:98:ARG:HH21	1.68	0.41
1:B:87:ASN:OD1	1:B:269:TYR:HD2	2.04	0.41
1:B:216:LEU:HD23	1:B:266:TYR:CD2	2.56	0.41
1:D:216:LEU:HD23	1:D:216:LEU:HA	1.93	0.41
2:J:34:MET:HE2	2:J:34:MET:HB2	1.86	0.41
2:J:40:ALA:HB3	2:J:43:LYS:HE3	2.03	0.41
3:F:81:MET:SD	3:F:84:LEU:HD21	2.60	0.41
1:A:597:VAL:HG13	1:A:608:VAL:HG13	2.02	0.41
1:D:21:ARG:HG3	1:D:78:ARG:CZ	2.51	0.41
1:D:69:HIS:HE1	1:D:79:PHE:O	2.03	0.41
1:D:124:THR:HG23	4:D:1302:NAG:HN2	1.85	0.41
3:E:44:ARG:HE	3:E:44:ARG:HB3	1.71	0.41
1:A:39:PRO:HG2	1:A:51:THR:HG21	2.03	0.41
1:A:117:LEU:HD12	1:A:129:LYS:O	2.20	0.41
1:A:245:HIS:CE1	1:A:258:TRP:CE3	3.09	0.41
1:B:328:ARG:HA	1:B:530:SER:HB3	2.02	0.41
1:D:635:VAL:HG22	1:D:637:SER:O	2.21	0.41
1:B:65:PHE:HB3	1:B:80:ASP:OD2	2.21	0.40
1:B:523:THR:N	1:B:527:PRO:CB	2.83	0.40
2:J:87:ASP:O	2:J:90:THR:HG22	2.21	0.40
3:F:95:HIS:HB3	3:F:108:TRP:HB3	2.02	0.40
3:F:100:PHE:H	3:F:103:GLY:HA2	1.86	0.40
3:G:39:ALA:HB3	3:G:42:LYS:HE2	2.03	0.40
1:A:607:GLN:NE2	2:J:98:ARG:CG	2.84	0.40
1:B:308:VAL:H	1:B:602:THR:CG2	2.34	0.40
2:I:38:HIS:ND1	2:I:48:VAL:HG23	2.36	0.40
3:E:83:SER:O	3:E:83:SER:OG	2.34	0.40
1:B:71:SER:HG	1:B:76:THR:HG1	1.67	0.40
1:D:259:THR:HG23	1:D:262:ALA:HB2	2.03	0.40
3:F:33:MET:HB2	3:F:50:ILE:CG2	2.51	0.40
2:I:15:GLY:HA2	2:I:84:SER:HA	2.03	0.40
3:E:74:LYS:HE3	3:E:78:TYR:OH	2.22	0.40
1:A:215:ASP:HA	1:A:266:TYR:OH	2.20	0.40
1:A:295:PRO:O	1:A:299:THR:HG23	2.21	0.40
1:B:61:ASN:C	1:B:61:ASN:OD1	2.60	0.40

*Continued on next page...*

Continued from previous page...

Atom-1	Atom-2	Interatomic distance (Å)	Clash overlap (Å)
1:D:36:VAL:O	1:D:222:ALA:HA	2.22	0.40
3:G:33:MET:HE3	3:G:34:GLY:N	2.35	0.40
2:I:99:THR:HG23	2:I:100:TRP:N	2.34	0.40
3:G:71:HIS:O	3:G:75:ASN:CA	2.69	0.40
3:E:59:ALA:HB3	3:E:62:VAL:HG22	2.03	0.40

There are no symmetry-related clashes.

## 5.3 Torsion angles [i](#)

### 5.3.1 Protein backbone [i](#)

In the following table, the Percentiles column shows the percent Ramachandran outliers of the chain as a percentile score with respect to all PDB entries followed by that with respect to all EM entries.

The Analysed column shows the number of residues for which the backbone conformation was analysed, and the total number of residues.

Mol	Chain	Analysed	Favoured	Allowed	Outliers	Percentiles	
1	A	466/1234 (38%)	415 (89%)	46 (10%)	5 (1%)	14	44
1	B	466/1234 (38%)	422 (91%)	40 (9%)	4 (1%)	17	49
1	D	470/1234 (38%)	432 (92%)	37 (8%)	1 (0%)	47	78
2	H	111/135 (82%)	100 (90%)	11 (10%)	0	100	100
2	I	111/135 (82%)	101 (91%)	10 (9%)	0	100	100
2	J	111/135 (82%)	94 (85%)	17 (15%)	0	100	100
3	E	116/139 (84%)	110 (95%)	5 (4%)	1 (1%)	17	49
3	F	116/139 (84%)	109 (94%)	6 (5%)	1 (1%)	17	49
3	G	116/139 (84%)	109 (94%)	6 (5%)	1 (1%)	17	49
All	All	2083/4524 (46%)	1892 (91%)	178 (8%)	13 (1%)	29	57

All (13) Ramachandran outliers are listed below:

Mol	Chain	Res	Type
1	A	320	VAL
1	A	635	VAL
1	D	634	ARG

Continued on next page...

*Continued from previous page...*

Mol	Chain	Res	Type
1	B	123	ALA
1	B	143	VAL
1	B	330	PRO
3	F	3	GLN
3	G	3	GLN
3	E	3	GLN
1	A	152	TRP
1	B	136	CYS
1	A	151	SER
1	A	324	GLU

### 5.3.2 Protein sidechains [i](#)

In the following table, the Percentiles column shows the percent sidechain outliers of the chain as a percentile score with respect to all PDB entries followed by that with respect to all EM entries.

The Analysed column shows the number of residues for which the sidechain conformation was analysed, and the total number of residues.

Mol	Chain	Analysed	Rotameric	Outliers	Percentiles
1	A	422/1073 (39%)	414 (98%)	8 (2%)	57 78
1	B	422/1073 (39%)	403 (96%)	19 (4%)	27 58
1	D	425/1073 (40%)	411 (97%)	14 (3%)	38 66
2	H	95/112 (85%)	92 (97%)	3 (3%)	39 67
2	I	95/112 (85%)	91 (96%)	4 (4%)	30 59
2	J	95/112 (85%)	93 (98%)	2 (2%)	53 76
3	E	93/110 (84%)	87 (94%)	6 (6%)	17 46
3	F	93/110 (84%)	87 (94%)	6 (6%)	17 46
3	G	93/110 (84%)	88 (95%)	5 (5%)	22 52
All	All	1833/3885 (47%)	1766 (96%)	67 (4%)	37 62

All (67) residues with a non-rotameric sidechain are listed below:

Mol	Chain	Res	Type
1	A	32	PHE
1	A	94	SER
1	A	96	GLU
1	A	140	PHE

*Continued on next page...*

*Continued from previous page...*

<b>Mol</b>	<b>Chain</b>	<b>Res</b>	<b>Type</b>
1	A	150	LYS
1	A	157	PHE
1	A	175	PHE
1	A	306	PHE
1	B	32	PHE
1	B	40	ASP
1	B	64	TRP
1	B	78	ARG
1	B	96	GLU
1	B	138	ASP
1	B	143	VAL
1	B	152	TRP
1	B	177	MET
1	B	180	GLU
1	B	205	SER
1	B	220	PHE
1	B	317	ASN
1	B	318	PHE
1	B	523	THR
1	B	565	PHE
1	B	567	ARG
1	B	634	ARG
1	B	662	CYS
1	D	45	SER
1	D	53	ASP
1	D	64	TRP
1	D	78	ARG
1	D	79	PHE
1	D	88	ASP
1	D	136	CYS
1	D	157	PHE
1	D	172	SER
1	D	245	HIS
1	D	266	TYR
1	D	310	LYS
1	D	556	ASN
1	D	565	PHE
2	J	38	HIS
2	J	43	LYS
3	F	19	ARG
3	F	37	ARG
3	F	45	GLU

*Continued on next page...*



*Continued from previous page...*

Mol	Chain	Res	Type
3	F	65	ARG
3	F	75	ASN
3	F	108	TRP
3	G	25	SER
3	G	36	TYR
3	G	72	ARG
3	G	105	TYR
3	G	108	TRP
2	H	67	PHE
2	H	81	GLN
2	H	106	ARG
2	I	21	SER
2	I	67	PHE
2	I	82	MET
2	I	104	TRP
3	E	22	CYS
3	E	23	VAL
3	E	63	LYS
3	E	65	ARG
3	E	96	LEU
3	E	108	TRP

Sometimes sidechains can be flipped to improve hydrogen bonding and reduce clashes. All (8) such sidechains are listed below:

Mol	Chain	Res	Type
1	A	146	HIS
1	B	641	ASN
3	F	49	GLN
3	F	95	HIS
3	F	110	GLN
3	G	75	ASN
2	H	81	GLN
2	H	83	ASN

### 5.3.3 RNA [i](#)

There are no RNA molecules in this entry.

## 5.4 Non-standard residues in protein, DNA, RNA chains [i](#)

There are no non-standard protein/DNA/RNA residues in this entry.

## 5.5 Carbohydrates [i](#)

There are no monosaccharides in this entry.

## 5.6 Ligand geometry [i](#)

35 ligands are modelled in this entry.

In the following table, the Counts columns list the number of bonds (or angles) for which Mogul statistics could be retrieved, the number of bonds (or angles) that are observed in the model and the number of bonds (or angles) that are defined in the Chemical Component Dictionary. The Link column lists molecule types, if any, to which the group is linked. The Z score for a bond length (or angle) is the number of standard deviations the observed value is removed from the expected value. A bond length (or angle) with  $|Z| > 2$  is considered an outlier worth inspection. RMSZ is the root-mean-square of all Z scores of the bond lengths (or angles).

Mol	Type	Chain	Res	Link	Bond lengths			Bond angles		
					Counts	RMSZ	# Z  > 2	Counts	RMSZ	# Z  > 2
4	NAG	A	1310	1	14,14,15	0.87	1 (7%)	17,19,21	0.47	0
4	NAG	B	1308	1	14,14,15	0.25	0	17,19,21	0.49	0
4	NAG	A	1308	1	14,14,15	0.25	0	17,19,21	0.40	0
4	NAG	A	1304	1	14,14,15	0.20	0	17,19,21	0.46	0
4	NAG	B	1309	1	14,14,15	0.26	0	17,19,21	0.66	1 (5%)
4	NAG	B	1301	1	14,14,15	0.20	0	17,19,21	0.48	0
4	NAG	A	1305	1	14,14,15	0.26	0	17,19,21	0.37	0
4	NAG	B	1306	1	14,14,15	0.39	0	17,19,21	0.85	1 (5%)
4	NAG	D	1304	1	14,14,15	0.20	0	17,19,21	0.44	0
4	NAG	B	1307	1	14,14,15	0.35	0	17,19,21	0.44	0
4	NAG	D	1305	1	14,14,15	0.22	0	17,19,21	0.44	0
4	NAG	B	1310	1	14,14,15	0.18	0	17,19,21	0.57	0
4	NAG	B	1302	1	14,14,15	0.29	0	17,19,21	0.53	0
4	NAG	D	1303	1	14,14,15	0.17	0	17,19,21	0.46	0
4	NAG	B	1303	1	14,14,15	0.26	0	17,19,21	0.61	1 (5%)
4	NAG	A	1309	1	14,14,15	0.22	0	17,19,21	0.36	0
4	NAG	D	1307	1	14,14,15	0.24	0	17,19,21	0.38	0
4	NAG	D	1310	1	14,14,15	0.29	0	17,19,21	0.66	1 (5%)
4	NAG	D	1308	1	14,14,15	0.26	0	17,19,21	0.42	0
4	NAG	A	1306	1	14,14,15	0.15	0	17,19,21	0.51	0
4	NAG	A	1301	1	14,14,15	0.21	0	17,19,21	0.45	0

Mol	Type	Chain	Res	Link	Bond lengths			Bond angles		
					Counts	RMSZ	# Z  > 2	Counts	RMSZ	# Z  > 2
4	NAG	A	1312	1	14,14,15	0.18	0	17,19,21	0.41	0
4	NAG	D	1301	1	14,14,15	0.31	0	17,19,21	0.54	0
4	NAG	D	1311	1	14,14,15	0.25	0	17,19,21	0.32	0
4	NAG	B	1311	1	14,14,15	0.23	0	17,19,21	0.42	0
4	NAG	A	1302	1	14,14,15	0.28	0	17,19,21	0.46	0
4	NAG	A	1303	1	14,14,15	0.33	0	17,19,21	0.47	0
4	NAG	A	1311	-	14,14,15	0.39	0	17,19,21	0.67	0
4	NAG	D	1309	1	14,14,15	0.56	0	17,19,21	0.69	0
4	NAG	D	1302	1	14,14,15	0.16	0	17,19,21	0.42	0
4	NAG	A	1307	1	14,14,15	0.17	0	17,19,21	0.47	0
4	NAG	B	1304	1	14,14,15	0.21	0	17,19,21	0.41	0
4	NAG	D	1312	1	14,14,15	0.17	0	17,19,21	0.41	0
4	NAG	D	1306	1	14,14,15	0.27	0	17,19,21	0.42	0
4	NAG	B	1305	1	14,14,15	0.39	0	17,19,21	0.68	0

In the following table, the Chirals column lists the number of chiral outliers, the number of chiral centers analysed, the number of these observed in the model and the number defined in the Chemical Component Dictionary. Similar counts are reported in the Torsion and Rings columns. '-' means no outliers of that kind were identified.

Mol	Type	Chain	Res	Link	Chirals	Torsions	Rings
4	NAG	A	1310	1	-	2/6/23/26	0/1/1/1
4	NAG	B	1308	1	-	2/6/23/26	0/1/1/1
4	NAG	A	1308	1	-	0/6/23/26	0/1/1/1
4	NAG	A	1304	1	-	2/6/23/26	0/1/1/1
4	NAG	B	1309	1	-	2/6/23/26	0/1/1/1
4	NAG	B	1301	1	-	0/6/23/26	0/1/1/1
4	NAG	A	1305	1	-	4/6/23/26	0/1/1/1
4	NAG	B	1306	1	-	1/6/23/26	0/1/1/1
4	NAG	D	1304	1	-	3/6/23/26	0/1/1/1
4	NAG	B	1307	1	-	1/6/23/26	0/1/1/1
4	NAG	D	1305	1	-	0/6/23/26	0/1/1/1
4	NAG	B	1310	1	-	1/6/23/26	0/1/1/1
4	NAG	B	1302	1	-	2/6/23/26	0/1/1/1
4	NAG	D	1303	1	-	2/6/23/26	0/1/1/1
4	NAG	B	1303	1	-	1/6/23/26	0/1/1/1
4	NAG	A	1309	1	-	2/6/23/26	0/1/1/1
4	NAG	D	1307	1	-	2/6/23/26	0/1/1/1
4	NAG	D	1310	1	-	2/6/23/26	0/1/1/1
4	NAG	D	1308	1	-	2/6/23/26	0/1/1/1

Continued on next page...

Continued from previous page...

Mol	Type	Chain	Res	Link	Chirals	Torsions	Rings
4	NAG	A	1306	1	-	2/6/23/26	0/1/1/1
4	NAG	A	1301	1	-	2/6/23/26	0/1/1/1
4	NAG	A	1312	1	-	0/6/23/26	0/1/1/1
4	NAG	D	1301	1	-	1/6/23/26	0/1/1/1
4	NAG	D	1311	1	-	1/6/23/26	0/1/1/1
4	NAG	B	1311	1	-	2/6/23/26	0/1/1/1
4	NAG	A	1302	1	-	2/6/23/26	0/1/1/1
4	NAG	A	1303	1	-	3/6/23/26	0/1/1/1
4	NAG	A	1311	-	-	0/6/23/26	0/1/1/1
4	NAG	D	1309	1	-	2/6/23/26	0/1/1/1
4	NAG	D	1302	1	-	3/6/23/26	0/1/1/1
4	NAG	A	1307	1	-	2/6/23/26	0/1/1/1
4	NAG	B	1304	1	-	0/6/23/26	0/1/1/1
4	NAG	D	1312	1	-	2/6/23/26	0/1/1/1
4	NAG	D	1306	1	-	2/6/23/26	0/1/1/1
4	NAG	B	1305	1	-	0/6/23/26	0/1/1/1

All (1) bond length outliers are listed below:

Mol	Chain	Res	Type	Atoms	Z	Observed(Å)	Ideal(Å)
4	A	1310	NAG	O5-C1	2.92	1.48	1.43

All (4) bond angle outliers are listed below:

Mol	Chain	Res	Type	Atoms	Z	Observed(°)	Ideal(°)
4	B	1306	NAG	C1-O5-C5	3.03	116.29	112.19
4	D	1310	NAG	C1-O5-C5	2.24	115.23	112.19
4	B	1309	NAG	C1-O5-C5	2.22	115.20	112.19
4	B	1303	NAG	C1-O5-C5	2.09	115.03	112.19

There are no chirality outliers.

All (55) torsion outliers are listed below:

Mol	Chain	Res	Type	Atoms
4	D	1309	NAG	C4-C5-C6-O6
4	A	1301	NAG	O5-C5-C6-O6
4	D	1306	NAG	O5-C5-C6-O6
4	D	1309	NAG	O5-C5-C6-O6
4	A	1306	NAG	C4-C5-C6-O6

Continued on next page...

*Continued from previous page...*

<b>Mol</b>	<b>Chain</b>	<b>Res</b>	<b>Type</b>	<b>Atoms</b>
4	B	1311	NAG	O5-C5-C6-O6
4	D	1308	NAG	O5-C5-C6-O6
4	D	1306	NAG	C4-C5-C6-O6
4	A	1302	NAG	O5-C5-C6-O6
4	A	1304	NAG	O5-C5-C6-O6
4	B	1302	NAG	O5-C5-C6-O6
4	D	1310	NAG	O5-C5-C6-O6
4	B	1311	NAG	C4-C5-C6-O6
4	B	1308	NAG	O5-C5-C6-O6
4	D	1303	NAG	O5-C5-C6-O6
4	A	1301	NAG	C4-C5-C6-O6
4	A	1305	NAG	O5-C5-C6-O6
4	A	1305	NAG	C4-C5-C6-O6
4	D	1308	NAG	C4-C5-C6-O6
4	B	1302	NAG	C4-C5-C6-O6
4	A	1302	NAG	C4-C5-C6-O6
4	A	1304	NAG	C4-C5-C6-O6
4	A	1306	NAG	O5-C5-C6-O6
4	B	1308	NAG	C4-C5-C6-O6
4	D	1303	NAG	C4-C5-C6-O6
4	A	1305	NAG	C8-C7-N2-C2
4	A	1305	NAG	O7-C7-N2-C2
4	D	1302	NAG	C8-C7-N2-C2
4	D	1302	NAG	O7-C7-N2-C2
4	D	1310	NAG	C4-C5-C6-O6
4	A	1307	NAG	O5-C5-C6-O6
4	D	1304	NAG	O5-C5-C6-O6
4	B	1303	NAG	O5-C5-C6-O6
4	A	1310	NAG	O5-C5-C6-O6
4	A	1307	NAG	C4-C5-C6-O6
4	A	1309	NAG	O5-C5-C6-O6
4	B	1310	NAG	O5-C5-C6-O6
4	A	1310	NAG	C4-C5-C6-O6
4	D	1307	NAG	O5-C5-C6-O6
4	D	1302	NAG	O5-C5-C6-O6
4	B	1307	NAG	O5-C5-C6-O6
4	B	1309	NAG	C4-C5-C6-O6
4	B	1309	NAG	O5-C5-C6-O6
4	D	1304	NAG	C4-C5-C6-O6
4	A	1303	NAG	C1-C2-N2-C7
4	A	1303	NAG	O5-C5-C6-O6
4	D	1311	NAG	O5-C5-C6-O6

*Continued on next page...*

*Continued from previous page...*

Mol	Chain	Res	Type	Atoms
4	B	1306	NAG	O5-C5-C6-O6
4	D	1312	NAG	C4-C5-C6-O6
4	A	1309	NAG	C4-C5-C6-O6
4	D	1307	NAG	C4-C5-C6-O6
4	D	1304	NAG	C1-C2-N2-C7
4	D	1301	NAG	C4-C5-C6-O6
4	D	1312	NAG	O5-C5-C6-O6
4	A	1303	NAG	C3-C2-N2-C7

There are no ring outliers.

7 monomers are involved in 9 short contacts:

Mol	Chain	Res	Type	Clashes	Symm-Clashes
4	A	1310	NAG	1	0
4	B	1309	NAG	1	0
4	B	1302	NAG	1	0
4	D	1311	NAG	1	0
4	A	1303	NAG	1	0
4	D	1309	NAG	2	0
4	D	1302	NAG	2	0

## 5.7 Other polymers [i](#)

There are no such residues in this entry.

## 5.8 Polymer linkage issues [i](#)

There are no chain breaks in this entry.

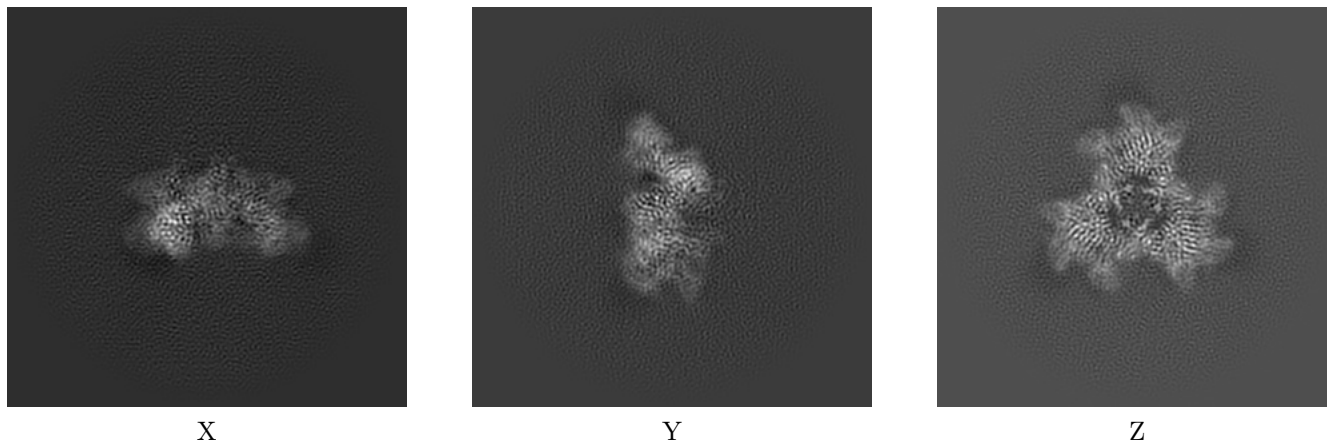
## 6 Map visualisation [i](#)

This section contains visualisations of the EMDB entry EMD-29802. These allow visual inspection of the internal detail of the map and identification of artifacts.

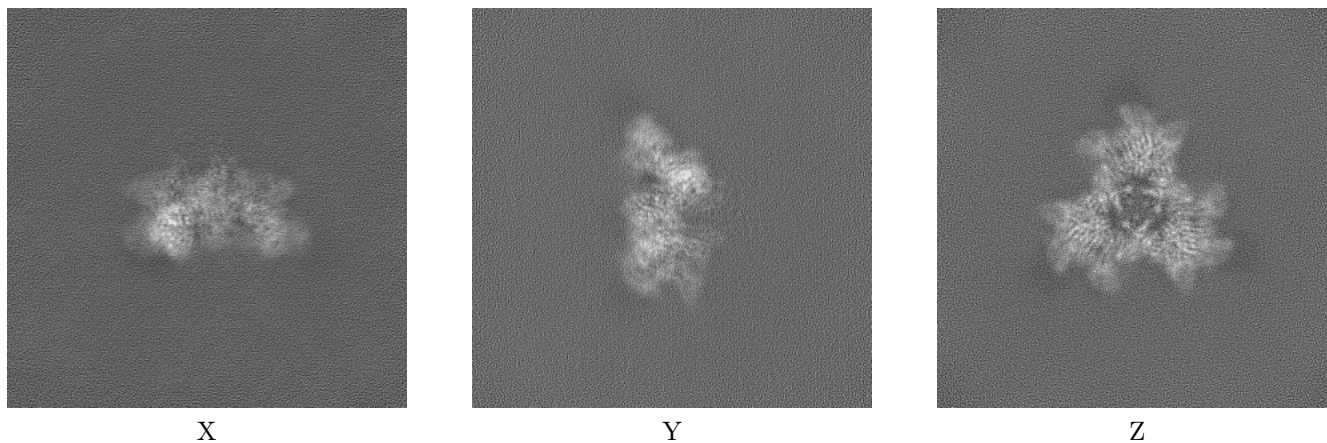
Images derived from a raw map, generated by summing the deposited half-maps, are presented below the corresponding image components of the primary map to allow further visual inspection and comparison with those of the primary map.

### 6.1 Orthogonal projections [i](#)

#### 6.1.1 Primary map



#### 6.1.2 Raw map

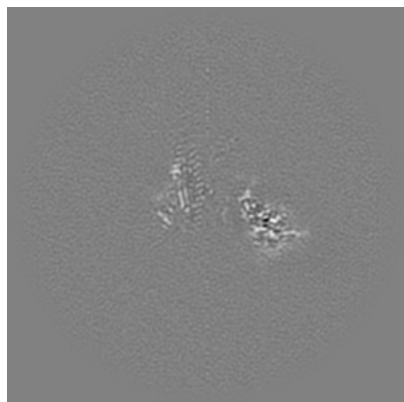


The images above show the map projected in three orthogonal directions.

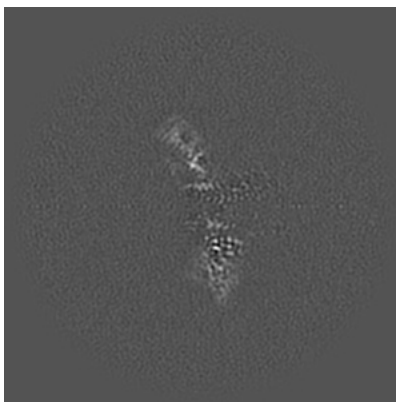


## 6.2 Central slices [i](#)

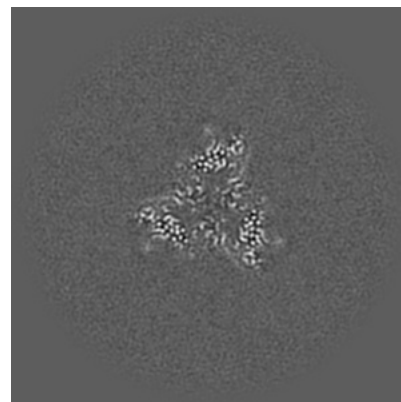
### 6.2.1 Primary map



X Index: 192



Y Index: 192

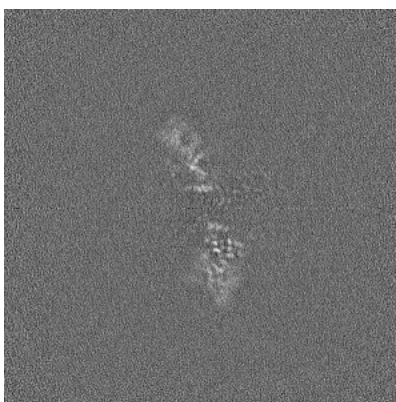


Z Index: 192

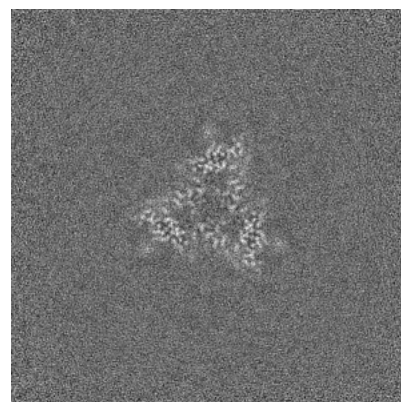
### 6.2.2 Raw map



X Index: 192



Y Index: 192



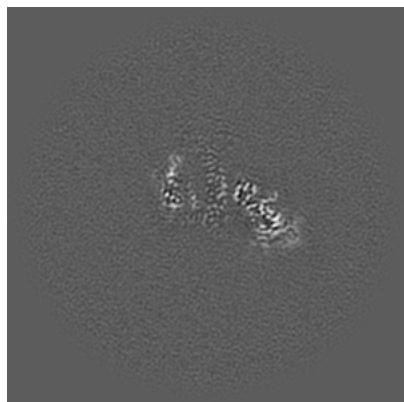
Z Index: 192

The images above show central slices of the map in three orthogonal directions.

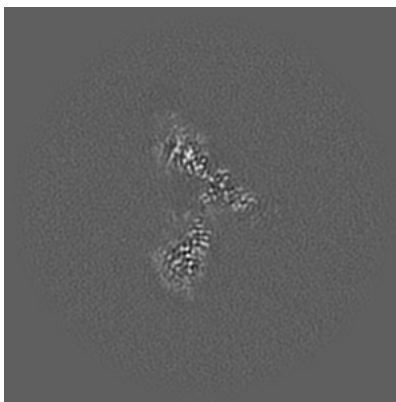


## 6.3 Largest variance slices [i](#)

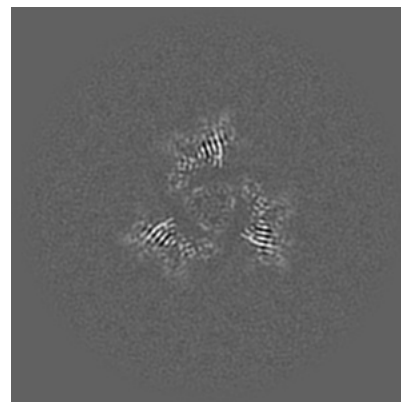
### 6.3.1 Primary map



X Index: 203

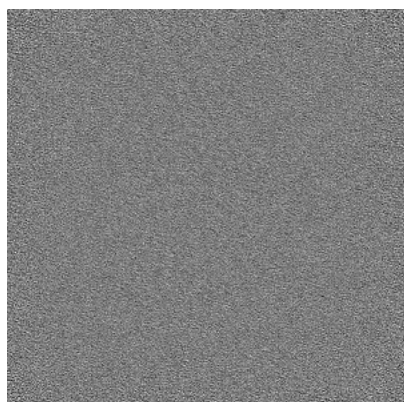


Y Index: 161

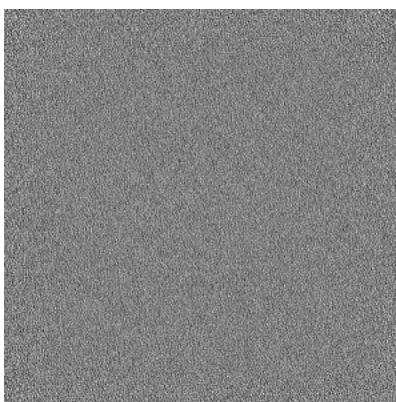


Z Index: 177

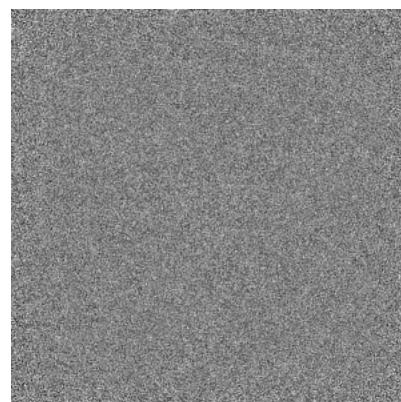
### 6.3.2 Raw map



X Index: 0



Y Index: 0

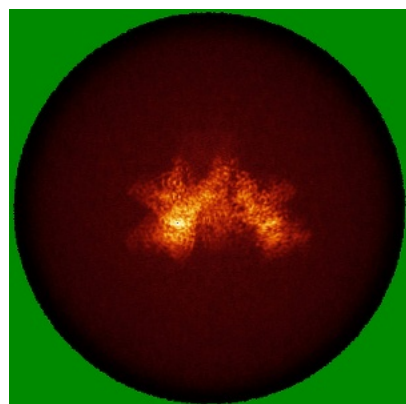


Z Index: 0

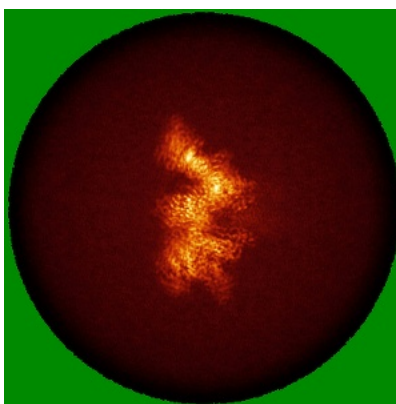
The images above show the largest variance slices of the map in three orthogonal directions.

## 6.4 Orthogonal standard-deviation projections (False-color) [i](#)

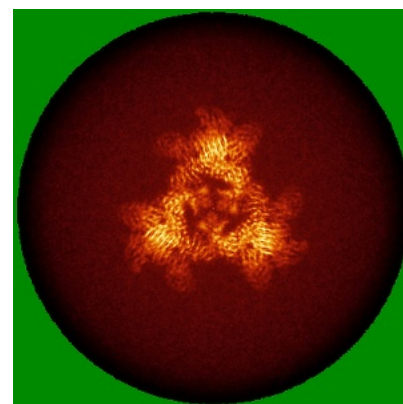
### 6.4.1 Primary map



X

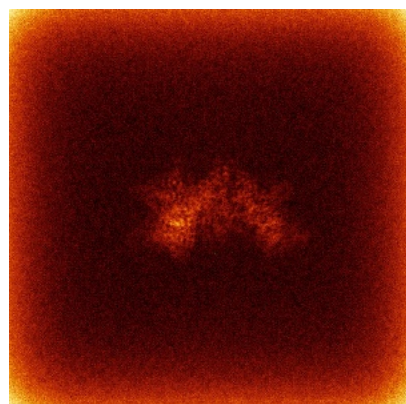


Y

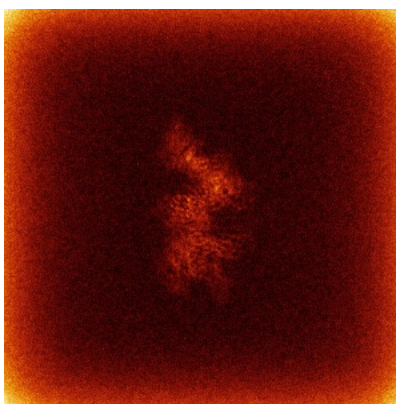


Z

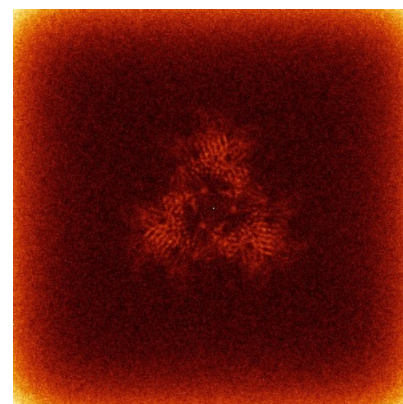
### 6.4.2 Raw map



X



Y

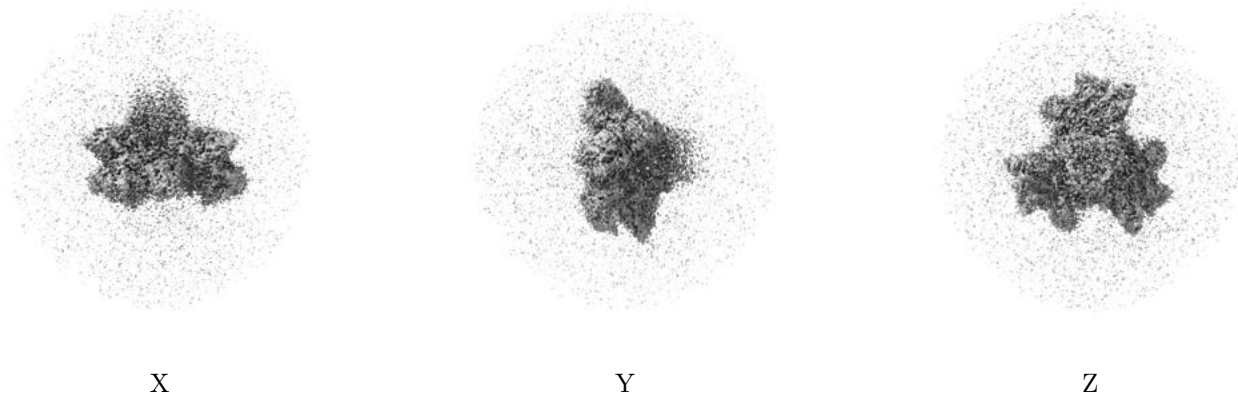


Z

The images above show the map standard deviation projections with false color in three orthogonal directions. Minimum values are shown in green, max in blue, and dark to light orange shades represent small to large values respectively.

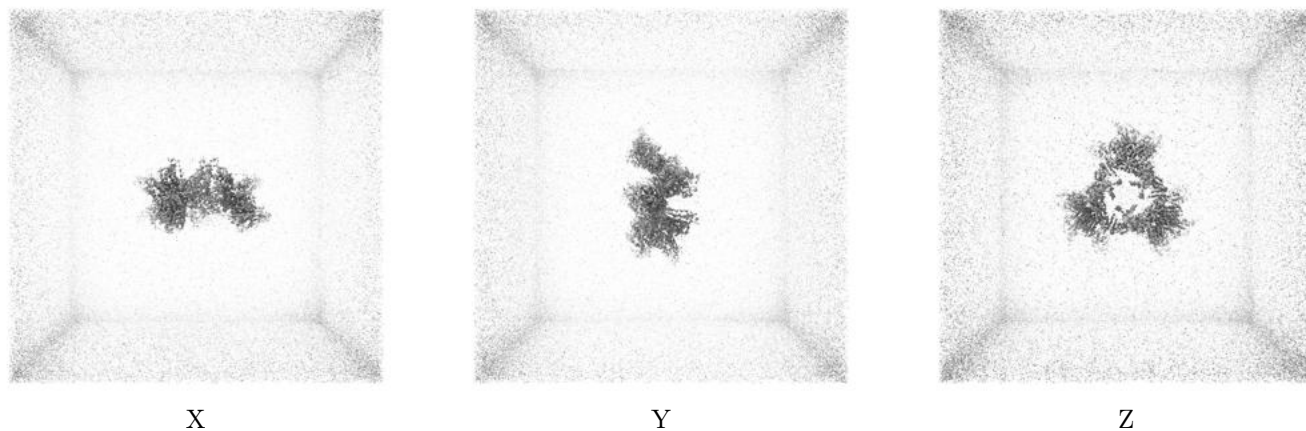
## 6.5 Orthogonal surface views [i](#)

### 6.5.1 Primary map



The images above show the 3D surface view of the map at the recommended contour level 0.0886. These images, in conjunction with the slice images, may facilitate assessment of whether an appropriate contour level has been provided.

### 6.5.2 Raw map



These images show the 3D surface of the raw map. The raw map's contour level was selected so that its surface encloses the same volume as the primary map does at its recommended contour level.

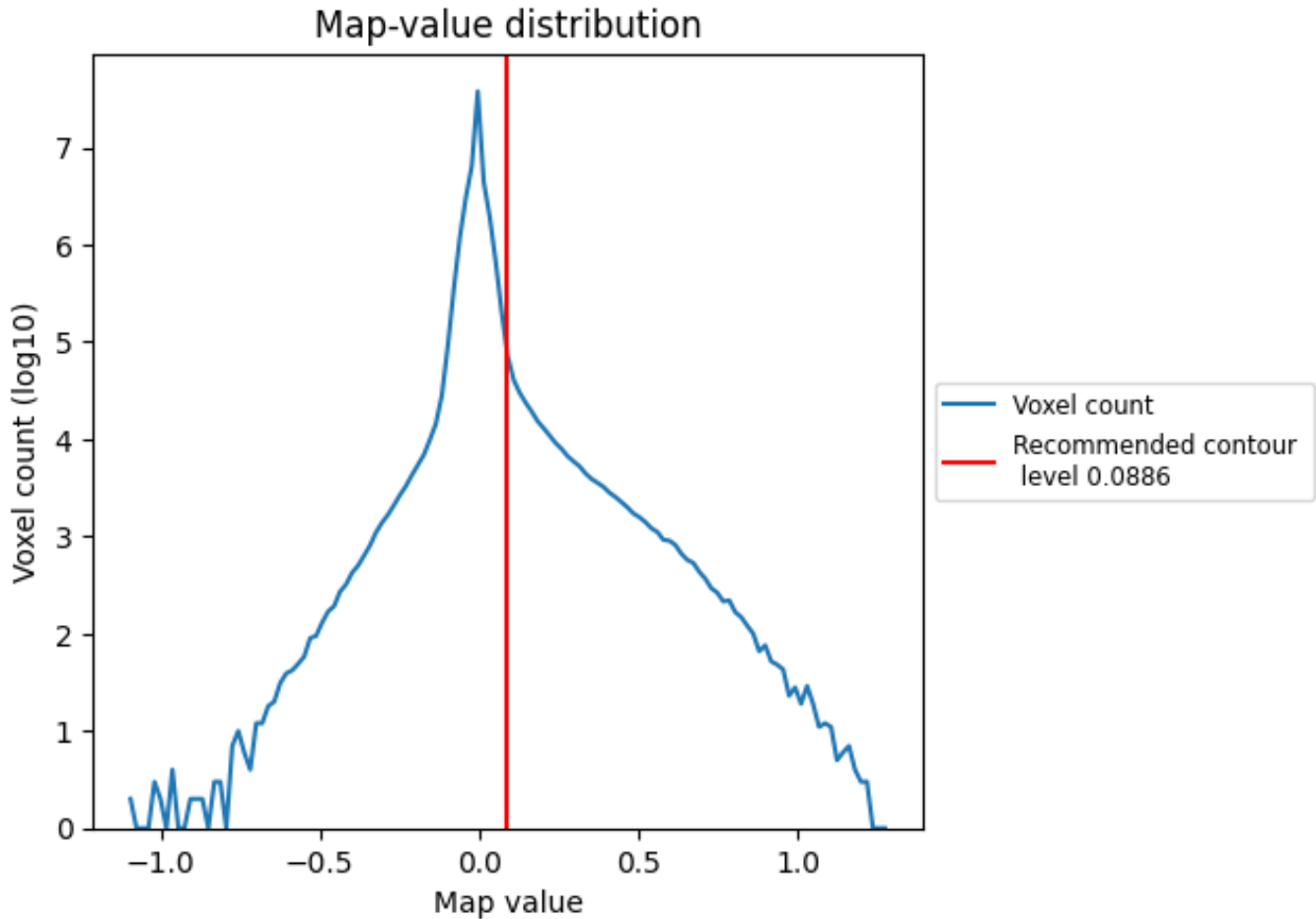
## 6.6 Mask visualisation [i](#)

This section was not generated. No masks/segmentation were deposited.

## 7 Map analysis [i](#)

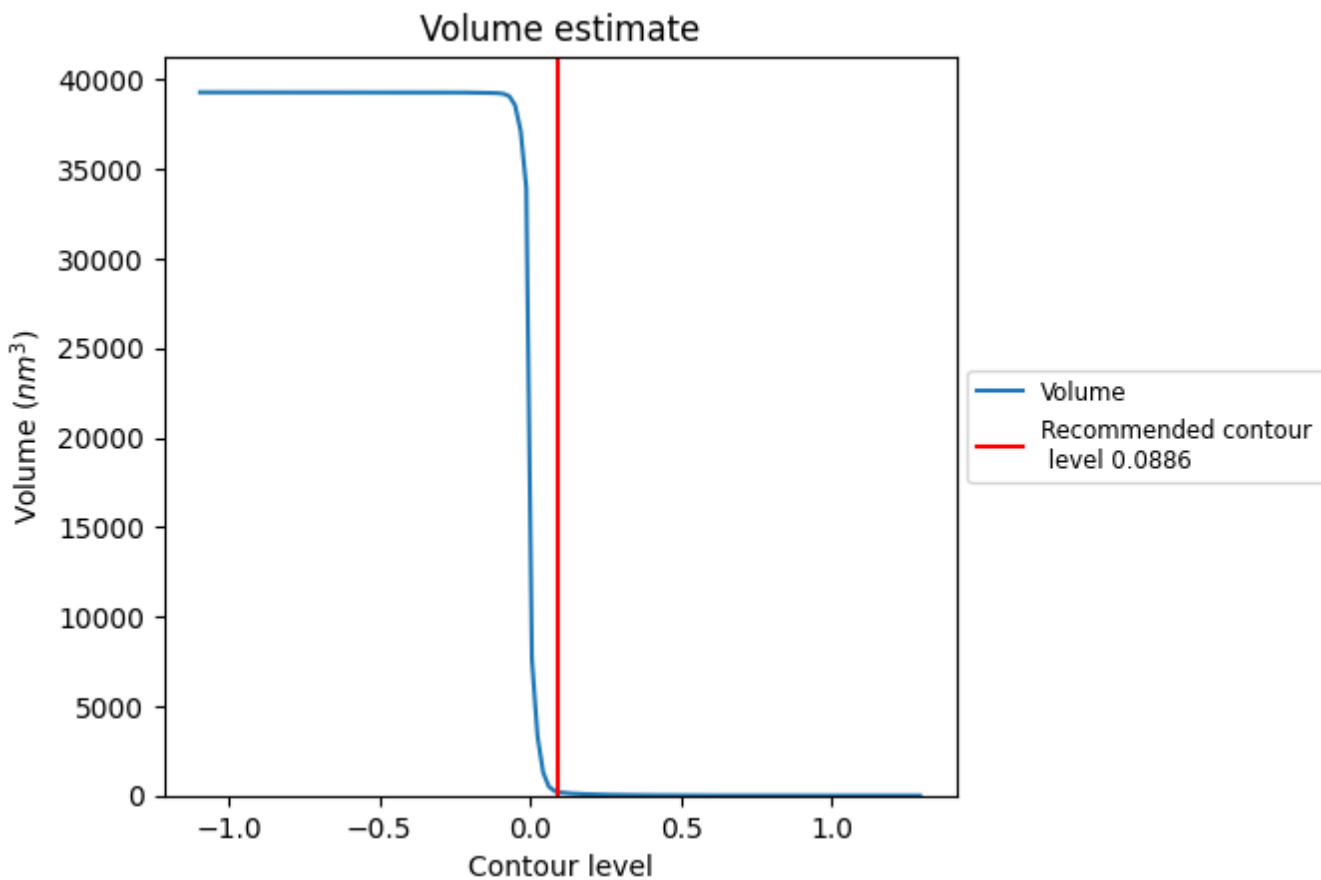
This section contains the results of statistical analysis of the map.

### 7.1 Map-value distribution [i](#)



The map-value distribution is plotted in 128 intervals along the x-axis. The y-axis is logarithmic. A spike in this graph at zero usually indicates that the volume has been masked.

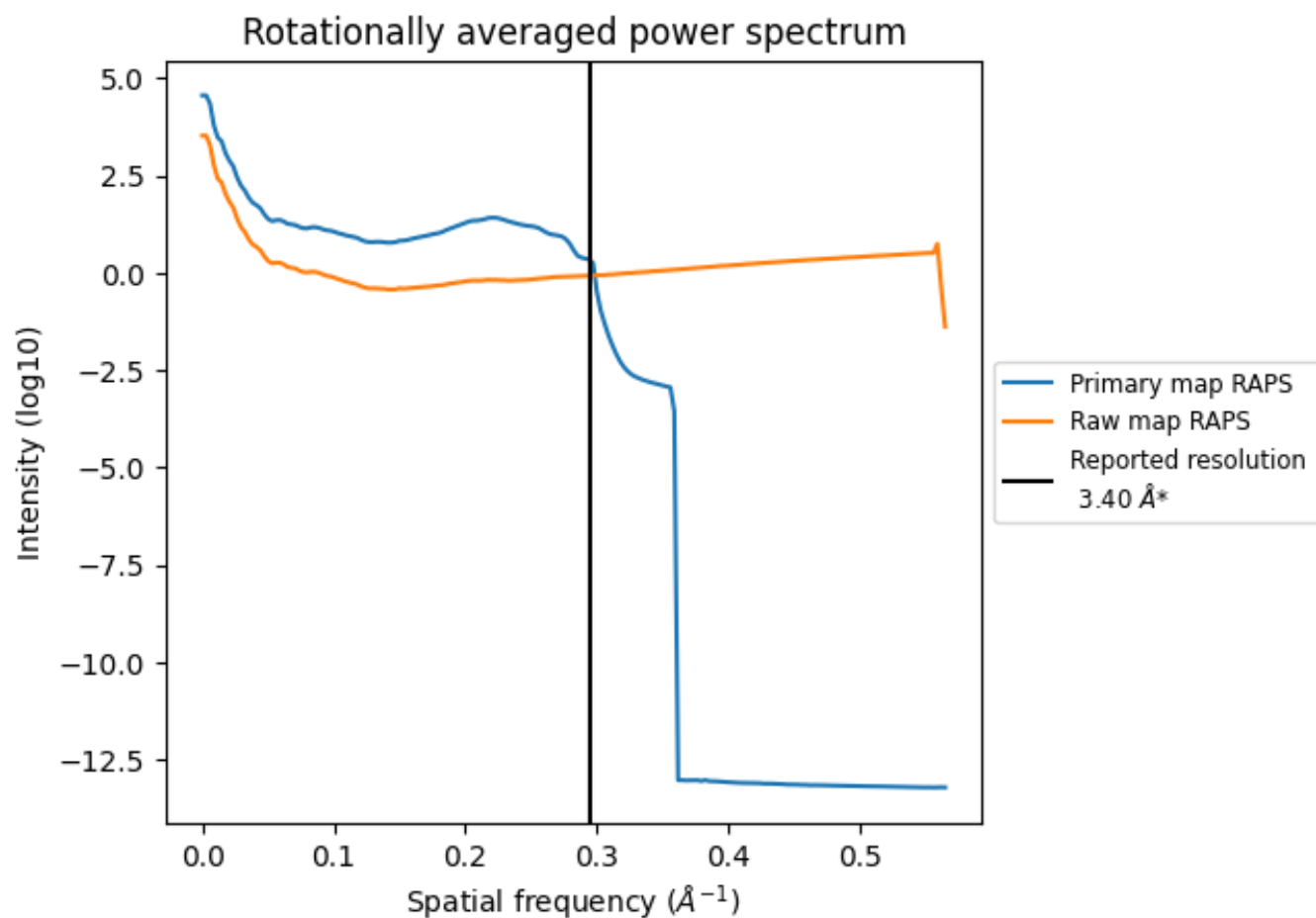
## 7.2 Volume estimate [i](#)



The volume at the recommended contour level is 219 nm<sup>3</sup>; this corresponds to an approximate mass of 198 kDa.

The volume estimate graph shows how the enclosed volume varies with the contour level. The recommended contour level is shown as a vertical line and the intersection between the line and the curve gives the volume of the enclosed surface at the given level.

### 7.3 Rotationally averaged power spectrum [i](#)



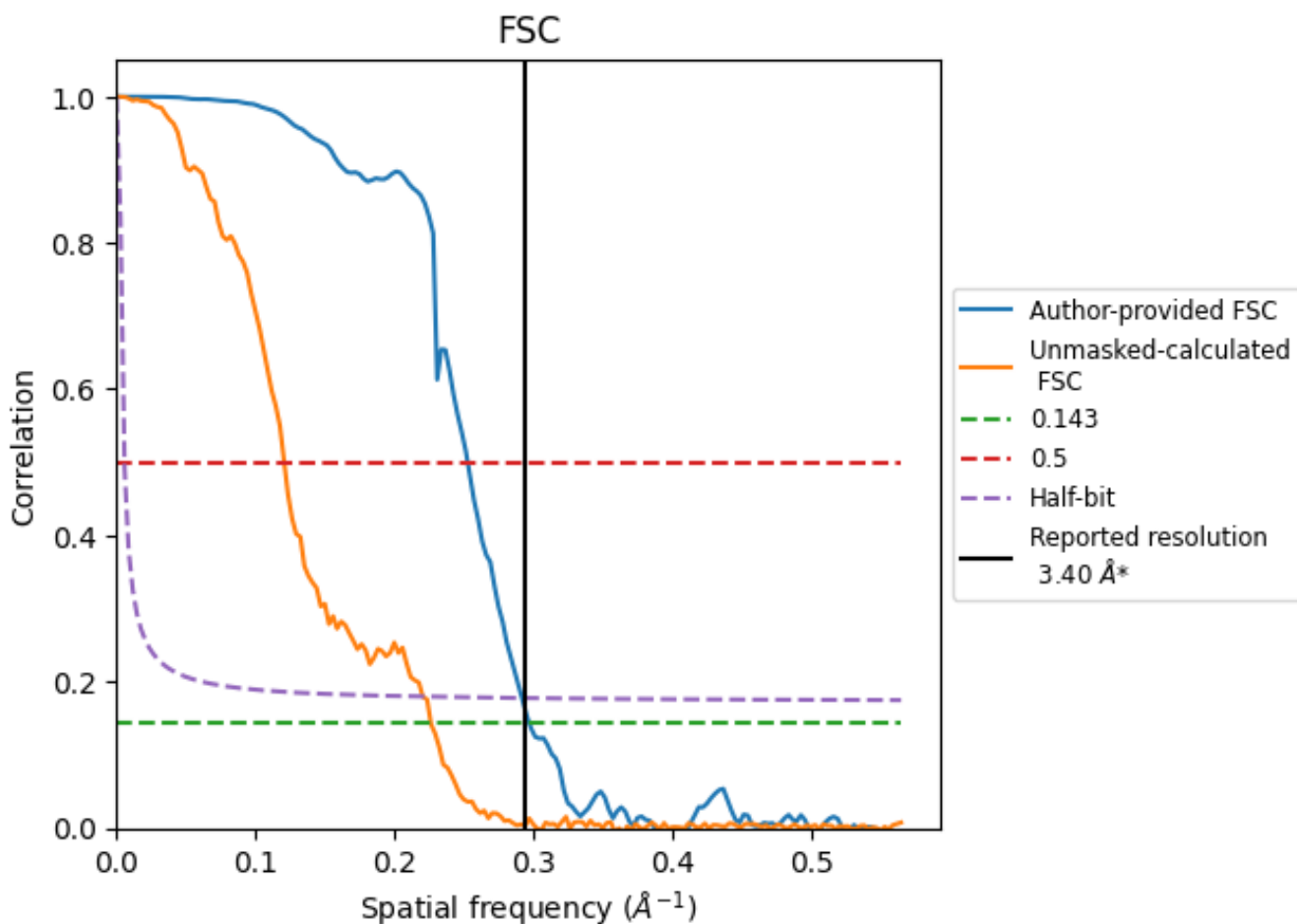
\*Reported resolution corresponds to spatial frequency of 0.294 Å<sup>-1</sup>



## 8 Fourier-Shell correlation [i](#)

Fourier-Shell Correlation (FSC) is the most commonly used method to estimate the resolution of single-particle and subtomogram-averaged maps. The shape of the curve depends on the imposed symmetry, mask and whether or not the two 3D reconstructions used were processed from a common reference. The reported resolution is shown as a black line. A curve is displayed for the half-bit criterion in addition to lines showing the 0.143 gold standard cut-off and 0.5 cut-off.

### 8.1 FSC [i](#)



\*Reported resolution corresponds to spatial frequency of 0.294 Å<sup>-1</sup>

## 8.2 Resolution estimates [i](#)

Resolution estimate (Å)	Estimation criterion (FSC cut-off)		
	0.143	0.5	Half-bit
Reported by author	3.40	-	-
Author-provided FSC curve	3.36	3.96	3.43
Unmasked-calculated*	4.42	8.28	4.53

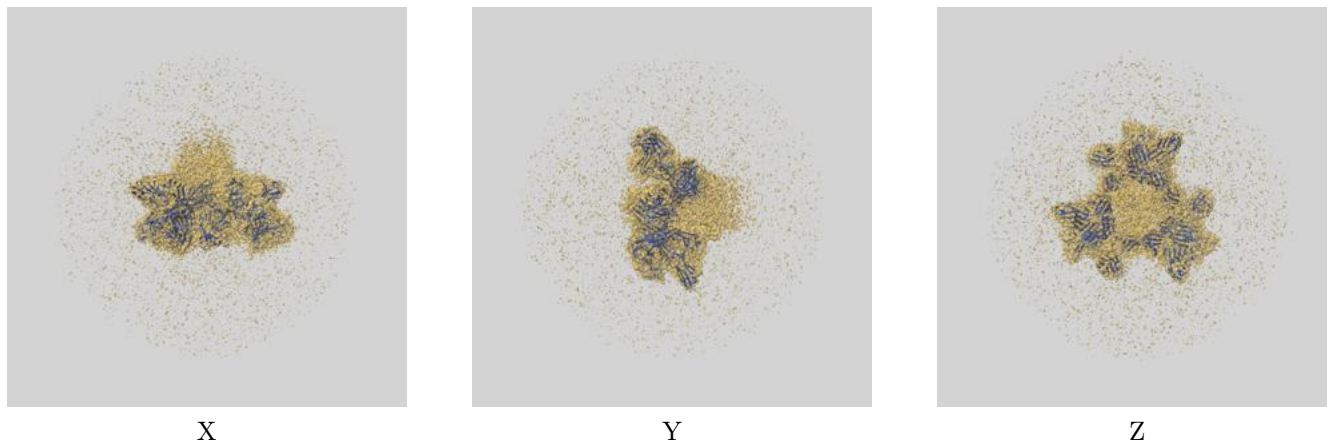
\*Resolution estimate based on FSC curve calculated by comparison of deposited half-maps. The value from deposited half-maps intersecting FSC 0.143 CUT-OFF 4.42 differs from the reported value 3.4 by more than 10 %



## 9 Map-model fit [i](#)

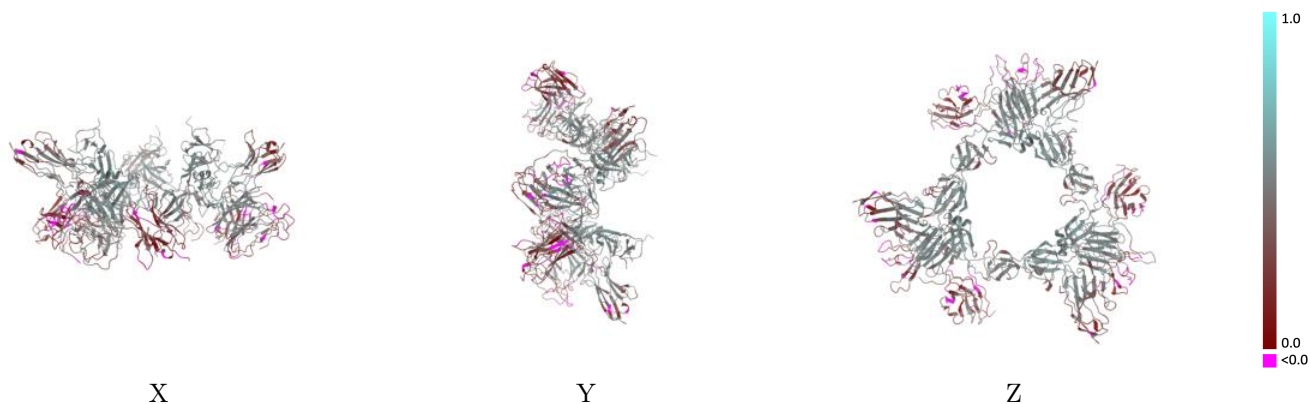
This section contains information regarding the fit between EMDB map EMD-29802 and PDB model 8G78. Per-residue inclusion information can be found in section 3 on page 11.

### 9.1 Map-model overlay [i](#)



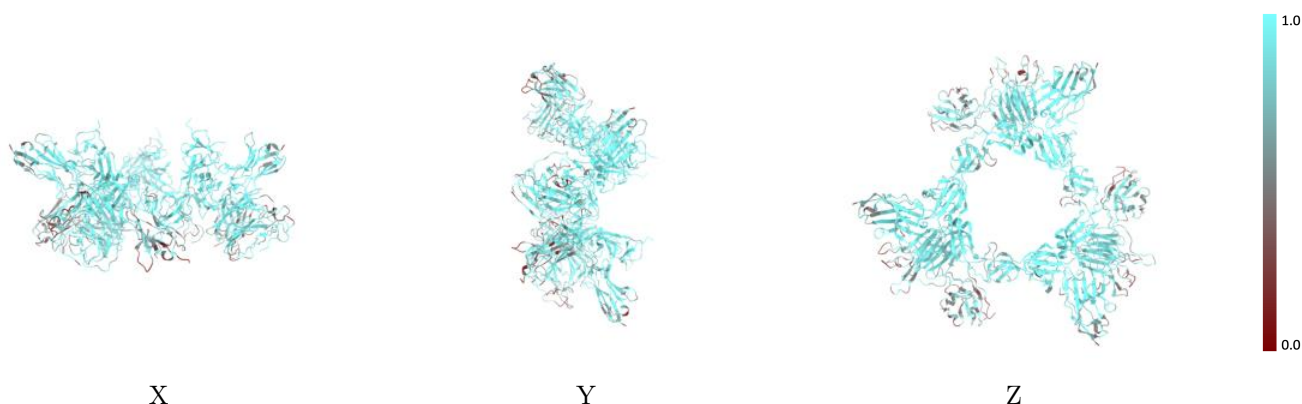
The images above show the 3D surface view of the map at the recommended contour level 0.0886 at 50% transparency in yellow overlaid with a ribbon representation of the model coloured in blue. These images allow for the visual assessment of the quality of fit between the atomic model and the map.

## 9.2 Q-score mapped to coordinate model [\(i\)](#)



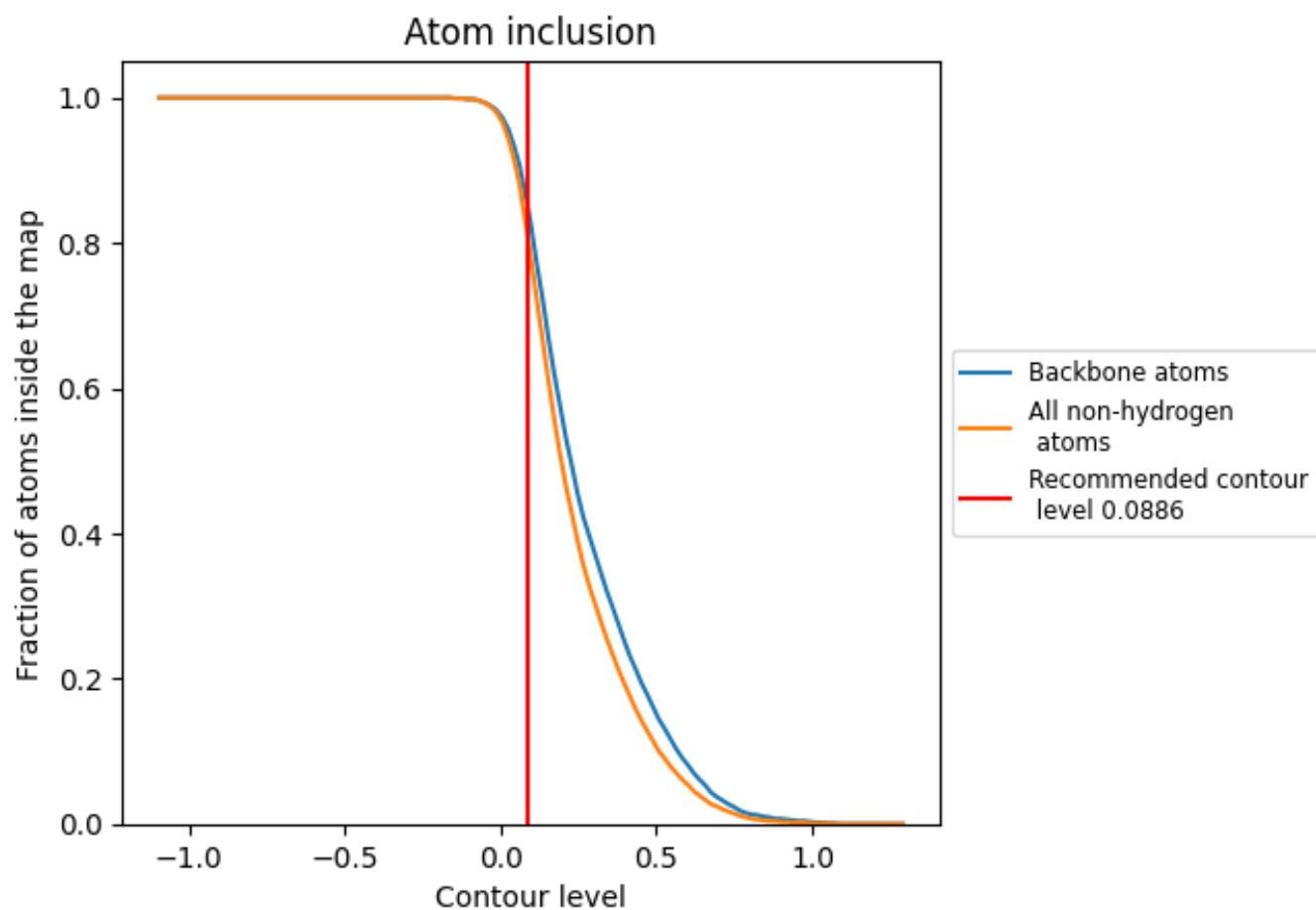
The images above show the model with each residue coloured according to its Q-score. This shows their resolvability in the map with higher Q-score values reflecting better resolvability. Please note: Q-score is calculating the resolvability of atoms, and thus high values are only expected at resolutions at which atoms can be resolved. Low Q-score values may therefore be expected for many entries.

## 9.3 Atom inclusion mapped to coordinate model [\(i\)](#)



The images above show the model with each residue coloured according to its atom inclusion. This shows to what extent they are inside the map at the recommended contour level (0.0886).





















## 9.4 Atom inclusion [i](#)



At the recommended contour level, 85% of all backbone atoms, 81% of all non-hydrogen atoms, are inside the map.

## 9.5 Map-model fit summary

The table lists the average atom inclusion at the recommended contour level (0.0886) and Q-score for the entire model and for each chain.

Chain	Atom inclusion	Q-score
All	 0.8060	 0.3910
A	 0.8360	 0.4190
B	 0.8310	 0.4260
D	 0.8220	 0.4180
E	 0.6730	 0.2480
F	 0.6270	 0.2200
G	 0.6620	 0.2510
H	 0.8370	 0.4000
I	 0.8470	 0.4120
J	 0.8790	 0.4190

