



# Full wwPDB X-ray Structure Validation Report ⓘ

Aug 2, 2021 – 03:03 pm BST

PDB ID : 6G76  
Title : Phosphorylated RSK4 N-terminal Kinase Domain in complex with AMP-PNP  
Authors : Prischi, F.; Ali, M.M.  
Deposited on : 2018-04-04  
Resolution : 3.00 Å(reported)

This is a Full wwPDB X-ray Structure Validation Report for a publicly released PDB entry.

We welcome your comments at [validation@mail.wwpdb.org](mailto:validation@mail.wwpdb.org)

A user guide is available at

<https://www.wwpdb.org/validation/2017/XrayValidationReportHelp>

with specific help available everywhere you see the ⓘ symbol.

---

The following versions of software and data (see [references ⓘ](#)) were used in the production of this report:

MolProbity : 4.02b-467  
Mogul : 1.8.5 (274361), CSD as541be (2020)  
Xtriage (Phenix) : 1.13  
EDS : 2.23.1  
buster-report : 1.1.7 (2018)  
Percentile statistics : 20191225.v01 (using entries in the PDB archive December 25th 2019)  
Refmac : 5.8.0158  
CCP4 : 7.0.044 (Gargrove)  
Ideal geometry (proteins) : Engh & Huber (2001)  
Ideal geometry (DNA, RNA) : Parkinson et al. (1996)  
Validation Pipeline (wwPDB-VP) : 2.23.1

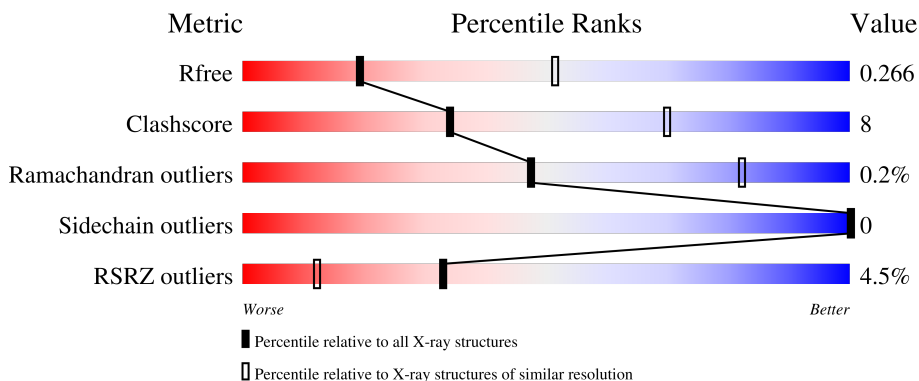
# 1 Overall quality at a glance

The following experimental techniques were used to determine the structure:

*X-RAY DIFFRACTION*

The reported resolution of this entry is 3.00 Å.

Percentile scores (ranging between 0-100) for global validation metrics of the entry are shown in the following graphic. The table shows the number of entries on which the scores are based.



Metric	Whole archive (#Entries)	Similar resolution (#Entries, resolution range(Å))
$R_{free}$	130704	2092 (3.00-3.00)
Clashscore	141614	2416 (3.00-3.00)
Ramachandran outliers	138981	2333 (3.00-3.00)
Sidechain outliers	138945	2336 (3.00-3.00)
RSRZ outliers	127900	1990 (3.00-3.00)

The table below summarises the geometric issues observed across the polymeric chains and their fit to the electron density. The red, orange, yellow and green segments of the lower bar indicate the fraction of residues that contain outliers for  $\geq 3$ , 2, 1 and 0 types of geometric quality criteria respectively. A grey segment represents the fraction of residues that are not modelled. The numeric value for each fraction is indicated below the corresponding segment, with a dot representing fractions  $\leq 5\%$ . The upper red bar (where present) indicates the fraction of residues that have poor fit to the electron density. The numeric value is given above the bar.

Mol	Chain	Length	Quality of chain
1	A	307	 8% 77% 18% 5%
1	B	307	 8% 69% 18% 12%

## 2 Entry composition

There are 4 unique types of molecules in this entry. The entry contains 4426 atoms, of which 0 are hydrogens and 0 are deuteriums.

In the tables below, the ZeroOcc column contains the number of atoms modelled with zero occupancy, the AltConf column contains the number of residues with at least one atom in alternate conformation and the Trace column contains the number of residues modelled with at most 2 atoms.

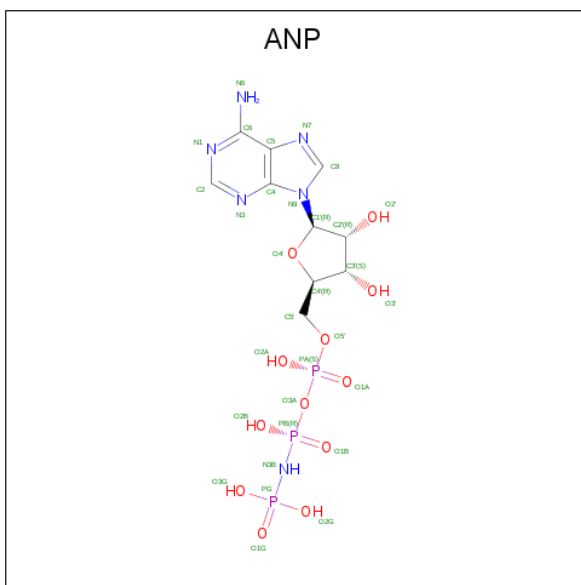
- Molecule 1 is a protein called Ribosomal protein S6 kinase alpha-6.

Mol	Chain	Residues	Atoms						ZeroOcc	AltConf	Trace
			Total	C	N	O	P	S			
1	A	291	2307	1495	388	414	1	9	0	0	0
1	B	269	1992	1302	327	357	6		0	0	0

There are 10 discrepancies between the modelled and reference sequences:

Chain	Residue	Modelled	Actual	Comment	Reference
A	43	GLY	-	expression tag	UNP Q9UK32
A	44	PRO	-	expression tag	UNP Q9UK32
A	45	LEU	-	expression tag	UNP Q9UK32
A	46	GLY	-	expression tag	UNP Q9UK32
A	47	SER	-	expression tag	UNP Q9UK32
B	43	GLY	-	expression tag	UNP Q9UK32
B	44	PRO	-	expression tag	UNP Q9UK32
B	45	LEU	-	expression tag	UNP Q9UK32
B	46	GLY	-	expression tag	UNP Q9UK32
B	47	SER	-	expression tag	UNP Q9UK32

- Molecule 2 is PHOSPHOAMINOPHOSPHONIC ACID-ADENYLATE ESTER (three-letter code: ANP) (formula: C<sub>10</sub>H<sub>17</sub>N<sub>6</sub>O<sub>12</sub>P<sub>3</sub>).



Mol	Chain	Residues	Atoms					ZeroOcc	AltConf
			Total	C	N	O	P		
2	A	1	Total	C	N	O	P	0	0
			31	10	6	12	3		
2	A	1	Total	C	N	O	P	0	0
			31	10	6	12	3		
2	B	1	Total	C	N	O	P	0	0
			31	10	6	12	3		

- Molecule 3 is ZINC ION (three-letter code: ZN) (formula: Zn).

Mol	Chain	Residues	Atoms		ZeroOcc	AltConf
3	A	1	Total	Zn	0	0
			1	1		

- Molecule 4 is water.

Mol	Chain	Residues	Atoms		ZeroOcc	AltConf
4	A	17	Total	O	0	0
			17	17		
4	B	16	Total	O	0	0
			16	16		



## 4 Data and refinement statistics

Property	Value	Source
Space group	P 1 21 1	Depositor
Cell constants a, b, c, $\alpha$ , $\beta$ , $\gamma$	62.49Å 52.33Å 115.50Å 90.00° 90.00° 90.00°	Depositor
Resolution (Å)	47.67 – 3.00 47.67 – 3.00	Depositor EDS
% Data completeness (in resolution range)	99.8 (47.67-3.00) 99.7 (47.67-3.00)	Depositor EDS
$R_{merge}$	0.05	Depositor
$R_{sym}$	(Not available)	Depositor
$\langle I/\sigma(I) \rangle$ <sup>1</sup>	3.05 (at 3.01Å)	Xtrriage
Refinement program	PHENIX 1.9_1692	Depositor
R, $R_{free}$	0.222 , 0.268 0.219 , 0.266	Depositor DCC
$R_{free}$ test set	740 reflections (4.86%)	wwPDB-VP
Wilson B-factor (Å <sup>2</sup> )	52.9	Xtrriage
Anisotropy	0.530	Xtrriage
Bulk solvent $k_{sol}$ (e/Å <sup>3</sup> ), $B_{sol}$ (Å <sup>2</sup> )	0.33 , 24.1	EDS
L-test for twinning <sup>2</sup>	$\langle  L  \rangle = 0.43$ , $\langle L^2 \rangle = 0.26$	Xtrriage
Estimated twinning fraction	0.440 for h,-k,-l	Xtrriage
Reported twinning fraction	0.500 for h,-k,-l	Depositor
Outliers	1 of 15233 reflections (0.007%)	Xtrriage
$F_o, F_c$ correlation	0.89	EDS
Total number of atoms	4426	wwPDB-VP
Average B, all atoms (Å <sup>2</sup> )	60.0	wwPDB-VP

Xtrriage's analysis on translational NCS is as follows: *The largest off-origin peak in the Patterson function is 13.66% of the height of the origin peak. No significant pseudotranslation is detected.*

<sup>1</sup>Intensities estimated from amplitudes.

<sup>2</sup>Theoretical values of  $\langle |L| \rangle$ ,  $\langle L^2 \rangle$  for acentric reflections are 0.5, 0.333 respectively for untwinned datasets, and 0.375, 0.2 for perfectly twinned datasets.

## 5 Model quality

### 5.1 Standard geometry

Bond lengths and bond angles in the following residue types are not validated in this section: ANP, ZN, SEP

The Z score for a bond length (or angle) is the number of standard deviations the observed value is removed from the expected value. A bond length (or angle) with  $|Z| > 5$  is considered an outlier worth inspection. RMSZ is the root-mean-square of all Z scores of the bond lengths (or angles).

Mol	Chain	Bond lengths		Bond angles	
		RMSZ	# Z  >5	RMSZ	# Z  >5
1	A	0.24	0/2348	0.40	0/3170
1	B	0.23	0/2039	0.38	0/2770
All	All	0.24	0/4387	0.39	0/5940

There are no bond length outliers.

There are no bond angle outliers.

There are no chirality outliers.

There are no planarity outliers.

### 5.2 Too-close contacts

In the following table, the Non-H and H(model) columns list the number of non-hydrogen atoms and hydrogen atoms in the chain respectively. The H(added) column lists the number of hydrogen atoms added and optimized by MolProbity. The Clashes column lists the number of clashes within the asymmetric unit, whereas Symm-Clashes lists symmetry-related clashes.

Mol	Chain	Non-H	H(model)	H(added)	Clashes	Symm-Clashes
1	A	2307	0	2292	33	0
1	B	1992	0	1837	37	0
2	A	62	0	26	7	0
2	B	31	0	13	4	0
3	A	1	0	0	0	0
4	A	17	0	0	0	0
4	B	16	0	0	1	0
All	All	4426	0	4168	72	0

The all-atom clashscore is defined as the number of clashes found per 1000 atoms (including hydrogen atoms). The all-atom clashscore for this structure is 8.

All (72) close contacts within the same asymmetric unit are listed below, sorted by their clash magnitude.

Atom-1	Atom-2	Interatomic distance (Å)	Clash overlap (Å)
1:B:314:ASN:ND2	4:B:501:HOH:O	2.18	0.76
1:B:139:HIS:NE2	1:B:153:ASP:OD1	2.20	0.72
1:A:108:LYS:HG3	1:A:224:VAL:HA	1.78	0.66
1:A:195:VAL:HG12	1:A:197:ARG:H	1.61	0.66
1:A:279:ASN:O	1:A:283:ASN:ND2	2.28	0.65
1:B:84:PHE:HB3	1:B:107:LEU:HD21	1.79	0.64
2:A:401:ANP:H8	2:A:401:ANP:O5'	2.02	0.59
1:A:112:LEU:HD13	1:A:219:LEU:HD23	1.84	0.58
1:A:238:GLU:HG2	1:A:271:LEU:HD13	1.86	0.57
1:B:83:SER:OG	2:B:401:ANP:O1G	2.21	0.57
1:A:242:PRO:HG2	1:A:310:ARG:HA	1.86	0.57
1:A:198:ASP:OD2	1:A:200:LYS:NZ	2.38	0.56
1:B:105:LYS:NZ	2:B:401:ANP:O2A	2.27	0.56
1:A:140:TYR:HB2	1:A:151:ILE:HB	1.87	0.56
2:A:401:ANP:O3G	2:A:401:ANP:O2A	2.24	0.55
1:B:60:HIS:HB3	1:B:141:ALA:HB3	1.90	0.54
1:B:133:PRO:O	1:B:213:LYS:NZ	2.37	0.53
1:B:109:LYS:HG3	1:B:222:GLU:HB3	1.91	0.53
1:A:159:ASP:HA	1:A:205:LEU:HA	1.91	0.53
1:A:196:TYR:O	1:A:198:ASP:N	2.40	0.53
1:A:234:CYS:SG	1:A:235:GLY:N	2.82	0.52
1:B:78:VAL:HA	1:B:88:PHE:HA	1.89	0.52
1:B:221:LYS:NZ	2:B:401:ANP:O2B	2.41	0.52
1:B:108:LYS:HG2	1:B:109:LYS:HE3	1.91	0.52
1:A:136:VAL:HG23	1:A:153:ASP:HB2	1.92	0.52
1:B:241:ALA:O	1:B:245:VAL:HG23	2.10	0.51
1:B:79:LEU:N	1:B:87:VAL:O	2.42	0.51
1:A:81:GLN:HA	1:A:86:LYS:HA	1.94	0.49
1:A:125:ASP:OD1	1:A:126:ILE:N	2.45	0.49
1:A:57:ILE:HD12	1:A:127:LEU:HD11	1.95	0.49
1:B:241:ALA:HA	1:B:257:TRP:CD1	2.47	0.49
1:B:321:VAL:HG23	1:B:324:ILE:HD12	1.93	0.49
1:B:242:PRO:HD3	1:B:257:TRP:CD2	2.47	0.49
1:A:87:VAL:HG22	1:A:105:LYS:HG2	1.95	0.49
1:B:176:LYS:HG2	1:B:333:ILE:HD11	1.95	0.49
1:A:74:GLU:HB2	1:A:93:LYS:HD3	1.95	0.48
1:A:61:VAL:HG21	1:A:67:LYS:HA	1.97	0.47
1:A:79:LEU:HD13	2:A:401:ANP:C2	2.45	0.47
2:A:402:ANP:N3B	2:A:402:ANP:O5'	2.47	0.47
1:B:199:LEU:HG	1:B:262:LEU:HD11	1.98	0.46

*Continued on next page...*



Continued from previous page...

Atom-1	Atom-2	Interatomic distance (Å)	Clash overlap (Å)
1:A:190:HIS:CE1	1:A:252:GLN:HG3	2.50	0.46
1:B:73:PHE:HB3	1:B:90:VAL:HB	1.98	0.45
1:B:163:ARG:CZ	1:B:347:PHE:HB3	2.46	0.45
1:A:133:PRO:O	1:A:213:LYS:NZ	2.41	0.45
1:A:139:HIS:NE2	1:A:153:ASP:OD1	2.30	0.45
1:A:216:ASP:OD1	1:A:217:PHE:N	2.38	0.45
1:A:82:GLY:HA3	2:A:401:ANP:N3B	2.32	0.44
1:B:61:VAL:HG21	1:B:67:LYS:HA	1.99	0.44
1:A:134:PHE:HE2	1:A:184:LEU:HD12	1.83	0.44
1:A:340:LYS:O	1:B:65:TYR:OH	2.27	0.44
1:A:80:GLY:HA3	2:A:401:ANP:H4'	2.00	0.44
1:B:62:LYS:N	1:B:139:HIS:O	2.49	0.44
1:B:125:ASP:N	1:B:125:ASP:OD1	2.50	0.44
1:B:296:LEU:O	1:B:301:GLN:NE2	2.49	0.44
1:A:81:GLN:HB2	1:A:86:LYS:HG2	1.98	0.44
1:A:115:ARG:NH2	2:A:402:ANP:H2	2.33	0.43
1:B:57:ILE:HD12	1:B:127:LEU:HD11	2.01	0.43
1:B:74:GLU:HB3	1:B:91:ARG:HB2	1.99	0.43
1:B:126:ILE:O	1:B:130:VAL:HG13	2.18	0.43
1:B:175:VAL:HG13	1:B:266:MET:SD	2.59	0.43
1:B:161:PHE:CE1	1:B:266:MET:HG3	2.54	0.42
1:A:239:TYR:OH	1:A:265:GLU:OE1	2.30	0.42
1:A:279:ASN:HA	1:A:282:MET:HE2	2.02	0.42
1:A:197:ARG:HG3	1:A:198:ASP:N	2.35	0.42
1:B:184:LEU:HD23	1:B:184:LEU:HA	1.93	0.42
1:B:239:TYR:OH	1:B:265:GLU:OE1	2.28	0.42
1:A:175:VAL:HG13	1:A:266:MET:SD	2.60	0.41
1:B:67:LYS:HE3	1:B:67:LYS:HB2	1.84	0.41
1:B:316:LEU:HG	1:B:324:ILE:HG12	2.03	0.41
1:B:70:PRO:HD3	1:B:144:THR:HG21	2.02	0.40
1:B:87:VAL:HG21	2:B:401:ANP:C8	2.51	0.40
1:B:241:ALA:HB3	1:B:244:VAL:HG23	2.02	0.40

There are no symmetry-related clashes.

## 5.3 Torsion angles [i](#)

### 5.3.1 Protein backbone [i](#)

In the following table, the Percentiles column shows the percent Ramachandran outliers of the chain as a percentile score with respect to all X-ray entries followed by that with respect to entries

of similar resolution.

The Analysed column shows the number of residues for which the backbone conformation was analysed, and the total number of residues.

Mol	Chain	Analysed	Favoured	Allowed	Outliers	Percentiles	
1	A	286/307 (93%)	275 (96%)	10 (4%)	1 (0%)	41	76
1	B	259/307 (84%)	247 (95%)	12 (5%)	0	100	100
All	All	545/614 (89%)	522 (96%)	22 (4%)	1 (0%)	47	82

All (1) Ramachandran outliers are listed below:

Mol	Chain	Res	Type
1	A	197	ARG

### 5.3.2 Protein sidechains [i](#)

In the following table, the Percentiles column shows the percent sidechain outliers of the chain as a percentile score with respect to all X-ray entries followed by that with respect to entries of similar resolution.

The Analysed column shows the number of residues for which the sidechain conformation was analysed, and the total number of residues.

Mol	Chain	Analysed	Rotameric	Outliers	Percentiles	
1	A	240/266 (90%)	240 (100%)	0	100	100
1	B	186/266 (70%)	186 (100%)	0	100	100
All	All	426/532 (80%)	426 (100%)	0	100	100

There are no protein residues with a non-rotameric sidechain to report.

Sometimes sidechains can be flipped to improve hydrogen bonding and reduce clashes. There are no such sidechains identified.

### 5.3.3 RNA [i](#)

There are no RNA molecules in this entry.

## 5.4 Non-standard residues in protein, DNA, RNA chains [i](#)

1 non-standard protein/DNA/RNA residue is modelled in this entry.

In the following table, the Counts columns list the number of bonds (or angles) for which Mogul statistics could be retrieved, the number of bonds (or angles) that are observed in the model and the number of bonds (or angles) that are defined in the Chemical Component Dictionary. The Link column lists molecule types, if any, to which the group is linked. The Z score for a bond length (or angle) is the number of standard deviations the observed value is removed from the expected value. A bond length (or angle) with  $|Z| > 2$  is considered an outlier worth inspection. RMSZ is the root-mean-square of all Z scores of the bond lengths (or angles).

Mol	Type	Chain	Res	Link	Bond lengths			Bond angles		
					Counts	RMSZ	# Z  > 2	Counts	RMSZ	# Z  > 2
1	SEP	A	232	1	8,9,10	1.54	1 (12%)	8,12,14	1.70	2 (25%)

In the following table, the Chirals column lists the number of chiral outliers, the number of chiral centers analysed, the number of these observed in the model and the number defined in the Chemical Component Dictionary. Similar counts are reported in the Torsion and Rings columns. '-' means no outliers of that kind were identified.

Mol	Type	Chain	Res	Link	Chirals	Torsions	Rings
1	SEP	A	232	1	-	2/5/8/10	-

All (1) bond length outliers are listed below:

Mol	Chain	Res	Type	Atoms	Z	Observed(Å)	Ideal(Å)
1	A	232	SEP	P-O1P	3.28	1.61	1.50

All (2) bond angle outliers are listed below:

Mol	Chain	Res	Type	Atoms	Z	Observed(°)	Ideal(°)
1	A	232	SEP	OG-CB-CA	3.03	111.09	108.14
1	A	232	SEP	P-OG-CB	-2.37	111.76	118.30

There are no chirality outliers.

All (2) torsion outliers are listed below:

Mol	Chain	Res	Type	Atoms
1	A	232	SEP	N-CA-CB-OG
1	A	232	SEP	CA-CB-OG-P

There are no ring outliers.

No monomer is involved in short contacts.

## 5.5 Carbohydrates [i](#)

There are no monosaccharides in this entry.

## 5.6 Ligand geometry [i](#)

Of 4 ligands modelled in this entry, 1 is monoatomic - leaving 3 for Mogul analysis.

In the following table, the Counts columns list the number of bonds (or angles) for which Mogul statistics could be retrieved, the number of bonds (or angles) that are observed in the model and the number of bonds (or angles) that are defined in the Chemical Component Dictionary. The Link column lists molecule types, if any, to which the group is linked. The Z score for a bond length (or angle) is the number of standard deviations the observed value is removed from the expected value. A bond length (or angle) with  $|Z| > 2$  is considered an outlier worth inspection. RMSZ is the root-mean-square of all Z scores of the bond lengths (or angles).

Mol	Type	Chain	Res	Link	Bond lengths			Bond angles		
					Counts	RMSZ	# Z  > 2	Counts	RMSZ	# Z  > 2
2	ANP	A	401	-	29,33,33	1.10	4 (13%)	31,52,52	1.30	3 (9%)
2	ANP	B	401	-	29,33,33	2.17	6 (20%)	31,52,52	1.37	3 (9%)
2	ANP	A	402	3	29,33,33	1.85	5 (17%)	31,52,52	1.41	4 (12%)

In the following table, the Chirals column lists the number of chiral outliers, the number of chiral centers analysed, the number of these observed in the model and the number defined in the Chemical Component Dictionary. Similar counts are reported in the Torsion and Rings columns. '-' means no outliers of that kind were identified.

Mol	Type	Chain	Res	Link	Chirals	Torsions	Rings
2	ANP	A	401	-	-	2/14/38/38	0/3/3/3
2	ANP	B	401	-	-	8/14/38/38	0/3/3/3
2	ANP	A	402	3	-	5/14/38/38	0/3/3/3

All (15) bond length outliers are listed below:

Mol	Chain	Res	Type	Atoms	Z	Observed(Å)	Ideal(Å)
2	A	402	ANP	PG-O1G	7.89	1.58	1.46
2	B	401	ANP	PG-O1G	7.69	1.58	1.46
2	B	401	ANP	PB-O1B	6.25	1.56	1.46
2	A	401	ANP	PG-N3B	2.79	1.70	1.63
2	A	402	ANP	PG-N3B	2.70	1.70	1.63
2	B	401	ANP	PB-O2B	-2.68	1.49	1.56
2	A	402	ANP	PB-O3A	-2.58	1.55	1.59
2	A	402	ANP	PG-O3G	-2.58	1.49	1.56

*Continued on next page...*

Continued from previous page...

Mol	Chain	Res	Type	Atoms	Z	Observed(Å)	Ideal(Å)
2	B	401	ANP	PG-N3B	2.45	1.69	1.63
2	B	401	ANP	PG-O3G	-2.41	1.50	1.56
2	B	401	ANP	PB-O3A	-2.40	1.56	1.59
2	A	401	ANP	PG-O1G	2.37	1.49	1.46
2	A	401	ANP	PB-O3A	-2.15	1.56	1.59
2	A	402	ANP	PB-O1B	2.12	1.49	1.46
2	A	401	ANP	PB-O1B	2.03	1.49	1.46

All (10) bond angle outliers are listed below:

Mol	Chain	Res	Type	Atoms	Z	Observed(°)	Ideal(°)
2	A	402	ANP	PA-O3A-PB	-4.61	116.39	132.62
2	A	401	ANP	PA-O3A-PB	-3.96	118.67	132.62
2	B	401	ANP	O1G-PG-N3B	-3.76	106.23	111.77
2	B	401	ANP	PA-O3A-PB	-3.65	119.77	132.62
2	A	402	ANP	C3'-C2'-C1'	3.05	105.56	100.98
2	A	401	ANP	C3'-C2'-C1'	3.04	105.55	100.98
2	B	401	ANP	C3'-C2'-C1'	2.87	105.30	100.98
2	A	402	ANP	O3G-PG-O1G	-2.55	107.05	113.45
2	A	401	ANP	O2G-PG-O1G	-2.24	107.82	113.45
2	A	402	ANP	C5-C6-N6	2.00	123.40	120.35

There are no chirality outliers.

All (15) torsion outliers are listed below:

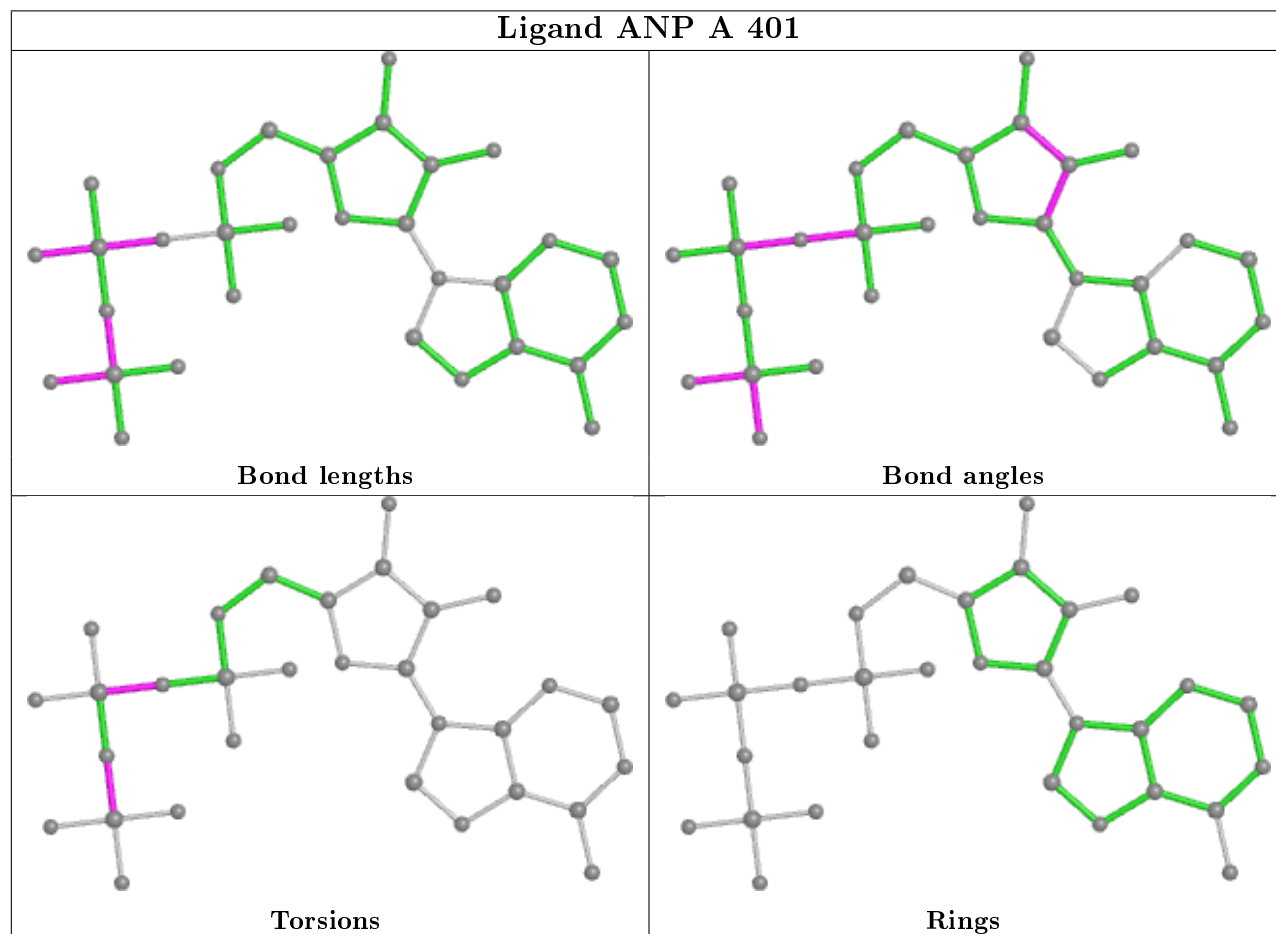
Mol	Chain	Res	Type	Atoms
2	A	401	ANP	PB-N3B-PG-O1G
2	A	402	ANP	PG-N3B-PB-O1B
2	A	402	ANP	O4'-C4'-C5'-O5'
2	A	402	ANP	C3'-C4'-C5'-O5'
2	B	401	ANP	PB-N3B-PG-O1G
2	B	401	ANP	PG-N3B-PB-O1B
2	B	401	ANP	PG-N3B-PB-O3A
2	B	401	ANP	C5'-O5'-PA-O1A
2	B	401	ANP	C5'-O5'-PA-O2A
2	B	401	ANP	C5'-O5'-PA-O3A
2	B	401	ANP	C3'-C4'-C5'-O5'
2	B	401	ANP	O4'-C4'-C5'-O5'
2	A	402	ANP	C4'-C5'-O5'-PA
2	A	402	ANP	PB-O3A-PA-O5'
2	A	401	ANP	PA-O3A-PB-O2B

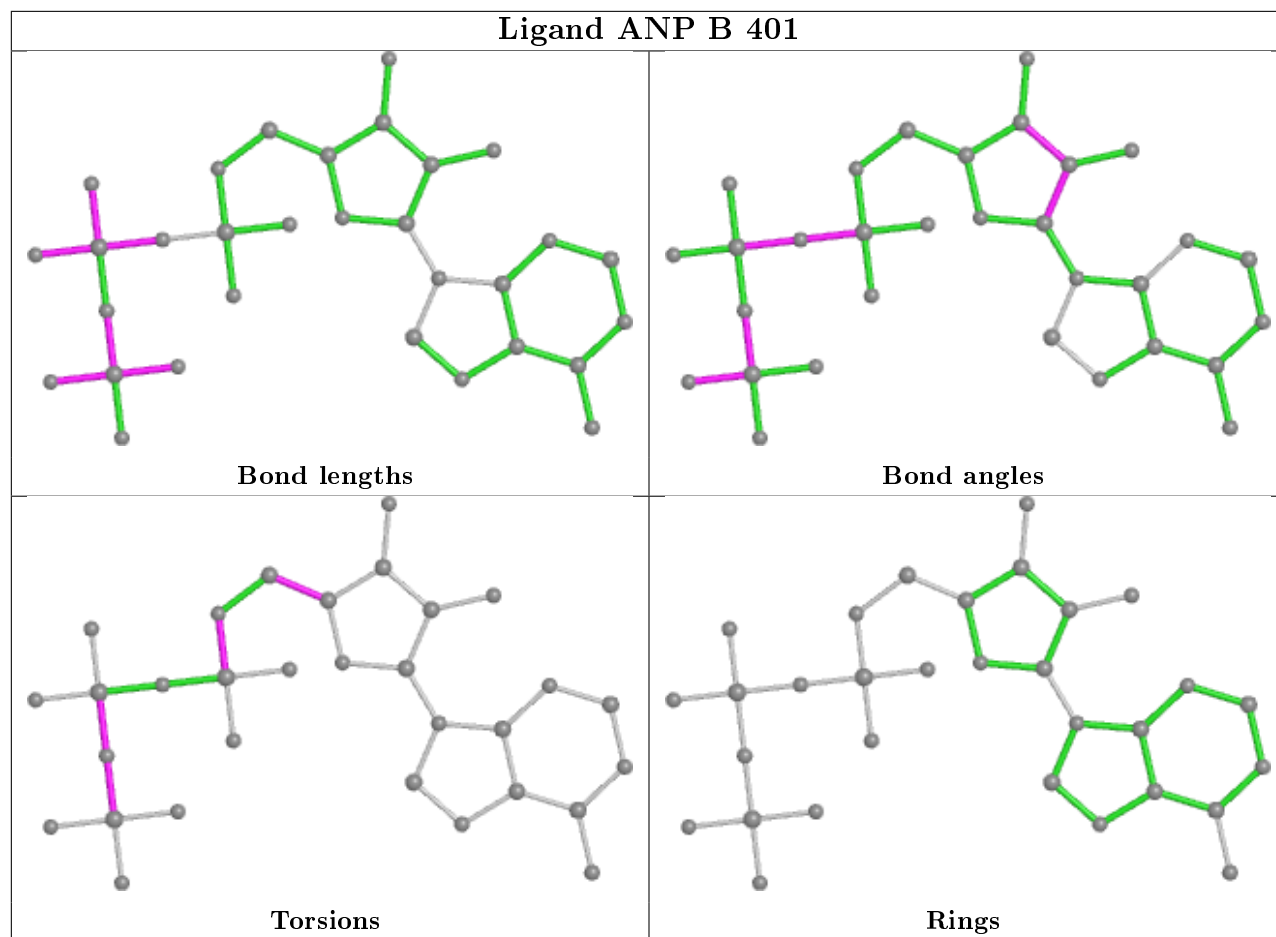
There are no ring outliers.

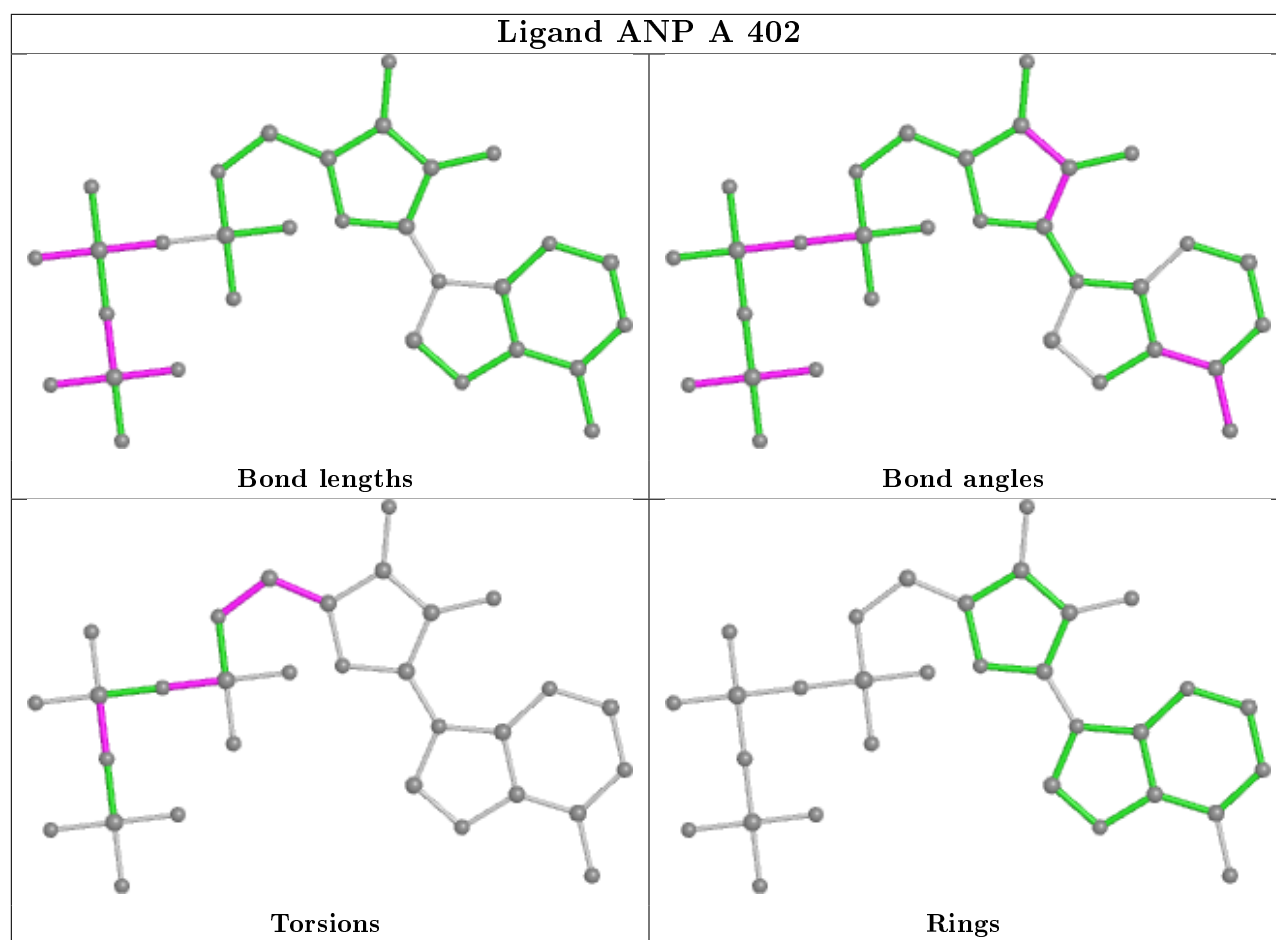
3 monomers are involved in 11 short contacts:

Mol	Chain	Res	Type	Clashes	Symm-Clashes
2	A	401	ANP	5	0
2	B	401	ANP	4	0
2	A	402	ANP	2	0

The following is a two-dimensional graphical depiction of Mogul quality analysis of bond lengths, bond angles, torsion angles, and ring geometry for all instances of the Ligand of Interest. In addition, ligands with molecular weight > 250 and outliers as shown on the validation Tables will also be included. For torsion angles, if less than 5% of the Mogul distribution of torsion angles is within 10 degrees of the torsion angle in question, then that torsion angle is considered an outlier. Any bond that is central to one or more torsion angles identified as an outlier by Mogul will be highlighted in the graph. For rings, the root-mean-square deviation (RMSD) between the ring in question and similar rings identified by Mogul is calculated over all ring torsion angles. If the average RMSD is greater than 60 degrees and the minimal RMSD between the ring in question and any Mogul-identified rings is also greater than 60 degrees, then that ring is considered an outlier. The outliers are highlighted in purple. The color gray indicates Mogul did not find sufficient equivalents in the CSD to analyse the geometry.







## 5.7 Other polymers [i](#)

There are no such residues in this entry.

## 5.8 Polymer linkage issues [i](#)

There are no chain breaks in this entry.



## 6 Fit of model and data

### 6.1 Protein, DNA and RNA chains

In the following table, the column labelled ‘#RSRZ> 2’ contains the number (and percentage) of RSRZ outliers, followed by percent RSRZ outliers for the chain as percentile scores relative to all X-ray entries and entries of similar resolution. The OWAB column contains the minimum, median, 95<sup>th</sup> percentile and maximum values of the occupancy-weighted average B-factor per residue. The column labelled ‘Q< 0.9’ lists the number of (and percentage) of residues with an average occupancy less than 0.9.

Mol	Chain	Analysed	<RSRZ>	#RSRZ>2	OWAB(Å <sup>2</sup> )	Q<0.9
1	A	290/307 (94%)	-0.43	0 <span style="border: 1px solid blue; padding: 2px;">100</span> <span style="border: 1px solid blue; padding: 2px;">100</span>	10, 28, 62, 92	0
1	B	269/307 (87%)	0.70	25 (9%) <span style="border: 1px solid red; padding: 2px;">8</span> <span style="border: 1px solid red; padding: 2px;">3</span>	53, 91, 123, 208	0
All	All	559/614 (91%)	0.11	25 (4%) <span style="border: 1px solid red; padding: 2px;">33</span> <span style="border: 1px solid red; padding: 2px;">12</span>	10, 62, 117, 208	0

All (25) RSRZ outliers are listed below:

Mol	Chain	Res	Type	RSRZ
1	B	76	LEU	14.1
1	B	75	LEU	7.7
1	B	78	VAL	5.2
1	B	274	GLN	4.4
1	B	77	LYS	4.1
1	B	237	VAL	3.9
1	B	335	TRP	3.6
1	B	210	GLY	3.2
1	B	325	LYS	3.1
1	B	180	ALA	3.0
1	B	87	VAL	2.9
1	B	127	LEU	2.9
1	B	333	ILE	2.6
1	B	313	ALA	2.4
1	B	272	PRO	2.3
1	B	271	LEU	2.3
1	B	273	PHE	2.3
1	B	331	ALA	2.3
1	B	63	GLU	2.1
1	B	85	GLY	2.1
1	B	51	VAL	2.1
1	B	141	ALA	2.1
1	B	250	HIS	2.1
1	B	185	ALA	2.0

*Continued on next page...*

*Continued from previous page...*

Mol	Chain	Res	Type	RSRZ
1	B	96	PRO	2.0

## 6.2 Non-standard residues in protein, DNA, RNA chains [i](#)

In the following table, the Atoms column lists the number of modelled atoms in the group and the number defined in the chemical component dictionary. The B-factors column lists the minimum, median, 95<sup>th</sup> percentile and maximum values of B factors of atoms in the group. The column labelled 'Q< 0.9' lists the number of atoms with occupancy less than 0.9.

Mol	Type	Chain	Res	Atoms	RSCC	RSR	B-factors(Å <sup>2</sup> )	Q<0.9
1	SEP	A	232	10/11	0.90	0.30	77,91,98,100	0

## 6.3 Carbohydrates [i](#)

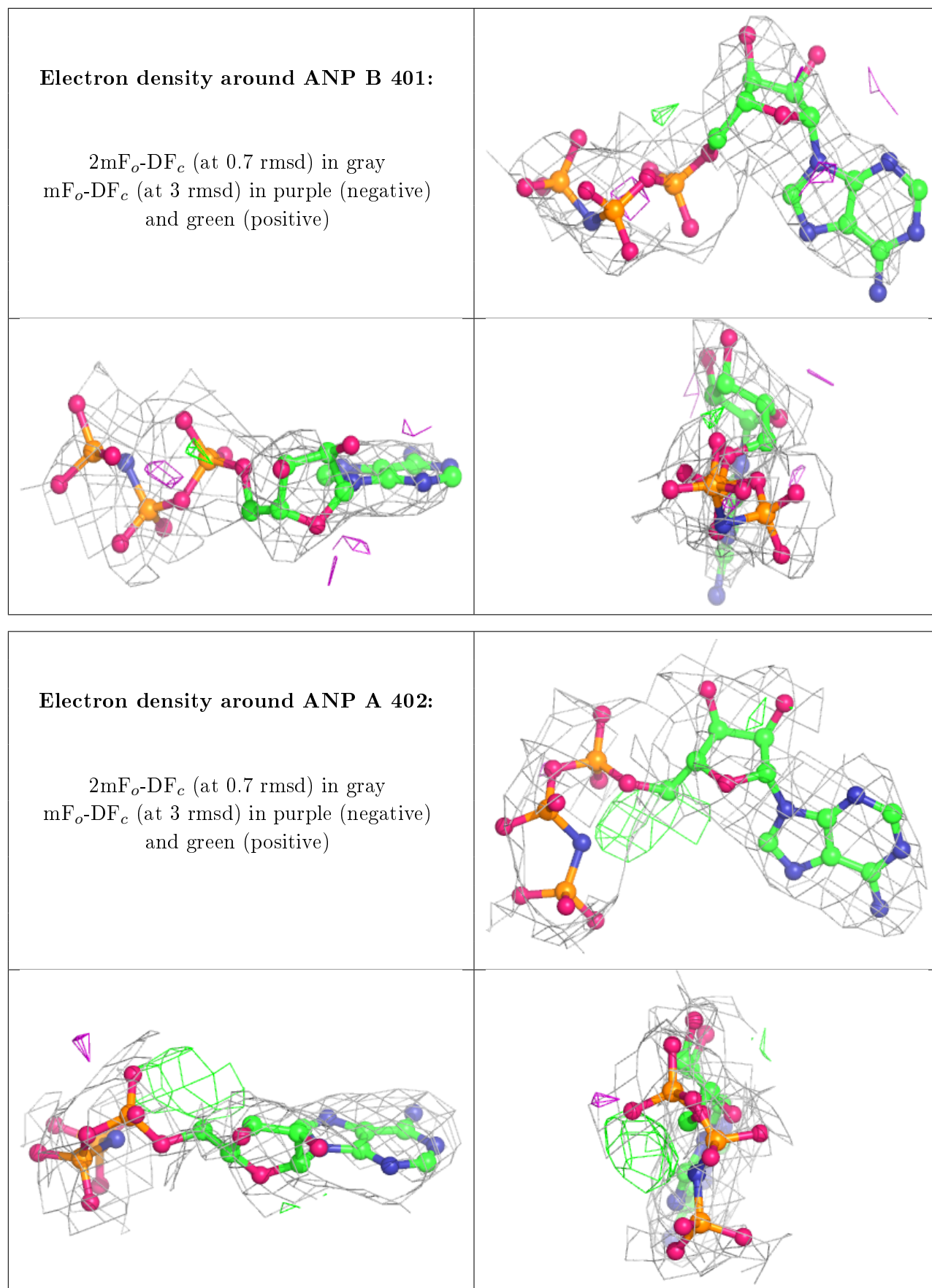
There are no monosaccharides in this entry.

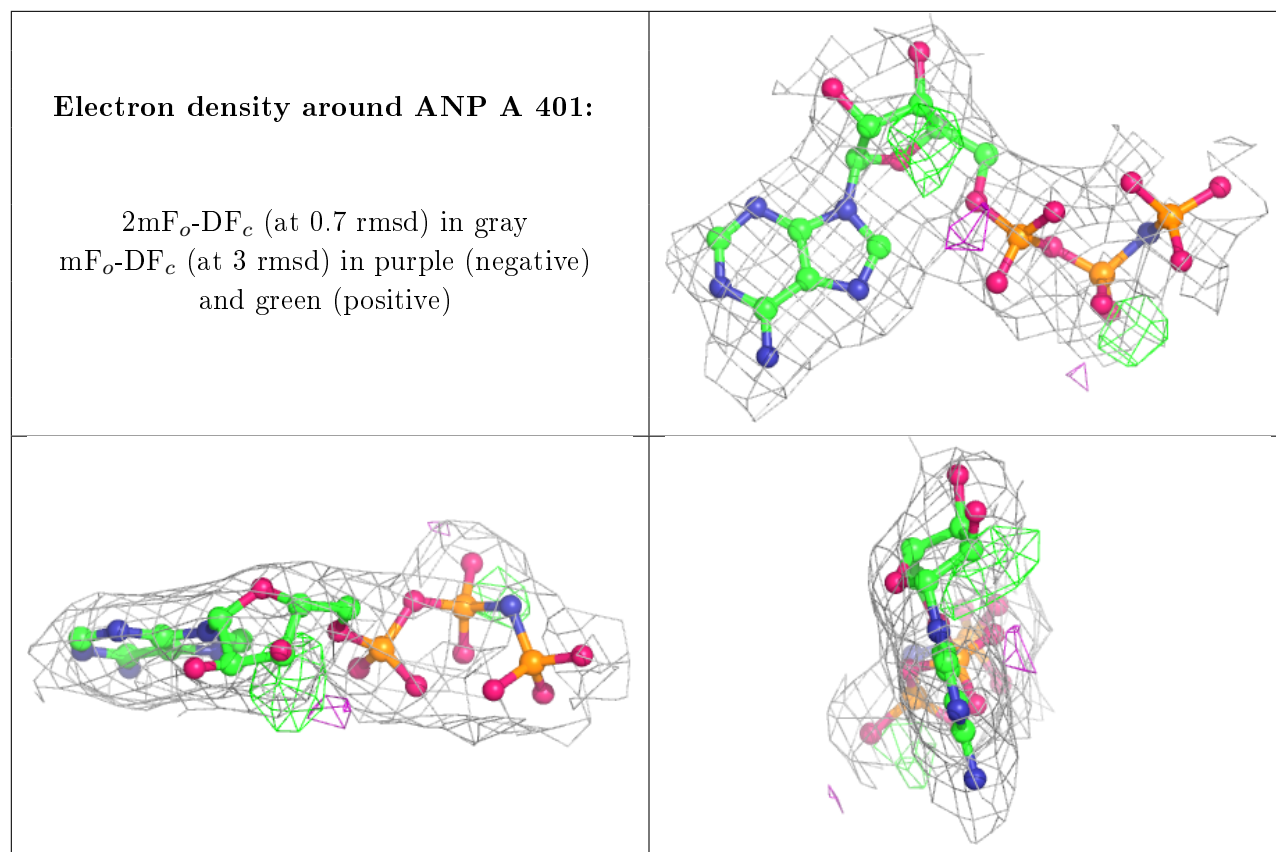
## 6.4 Ligands [i](#)

In the following table, the Atoms column lists the number of modelled atoms in the group and the number defined in the chemical component dictionary. The B-factors column lists the minimum, median, 95<sup>th</sup> percentile and maximum values of B factors of atoms in the group. The column labelled 'Q< 0.9' lists the number of atoms with occupancy less than 0.9.

Mol	Type	Chain	Res	Atoms	RSCC	RSR	B-factors(Å <sup>2</sup> )	Q<0.9
2	ANP	B	401	31/31	0.83	0.30	96,109,139,153	0
2	ANP	A	402	31/31	0.89	0.19	55,96,117,129	0
2	ANP	A	401	31/31	0.96	0.18	16,35,69,84	0
3	ZN	A	403	1/1	0.96	0.07	110,110,110,110	0

The following is a graphical depiction of the model fit to experimental electron density of all instances of the Ligand of Interest. In addition, ligands with molecular weight > 250 and outliers as shown on the geometry validation Tables will also be included. Each fit is shown from different orientation to approximate a three-dimensional view.





## 6.5 Other polymers [i](#)

There are no such residues in this entry.