



Full wwPDB X-ray Structure Validation Report ⓘ

Feb 18, 2024 – 05:49 PM EST

PDB ID : 4G70
Title : Structure of Recombinant Cytochrome ba3 Oxidase mutant V236T from *Thermus thermophilus*
Authors : Li, Y.; Chen, Y.; Stout, C.D.
Deposited on : 2012-07-19
Resolution : 2.60 Å (reported)

This is a Full wwPDB X-ray Structure Validation Report for a publicly released PDB entry.

We welcome your comments at validation@mail.wwpdb.org

A user guide is available at

<https://www.wwpdb.org/validation/2017/XrayValidationReportHelp>

with specific help available everywhere you see the ⓘ symbol.

The types of validation reports are described at

<http://www.wwpdb.org/validation/2017/FAQs#types>.

The following versions of software and data (see [references ⓘ](#)) were used in the production of this report:

MolProbity : 4.02b-467
Mogul : 1.8.5 (274361), CSD as541be (2020)
Xtriage (Phenix) : 1.13
EDS : 2.36
buster-report : 1.1.7 (2018)
Percentile statistics : 20191225.v01 (using entries in the PDB archive December 25th 2019)
Refmac : 5.8.0158
CCP4 : 7.0.044 (Gargrove)
Ideal geometry (proteins) : Engh & Huber (2001)
Ideal geometry (DNA, RNA) : Parkinson et al. (1996)
Validation Pipeline (wwPDB-VP) : 2.36

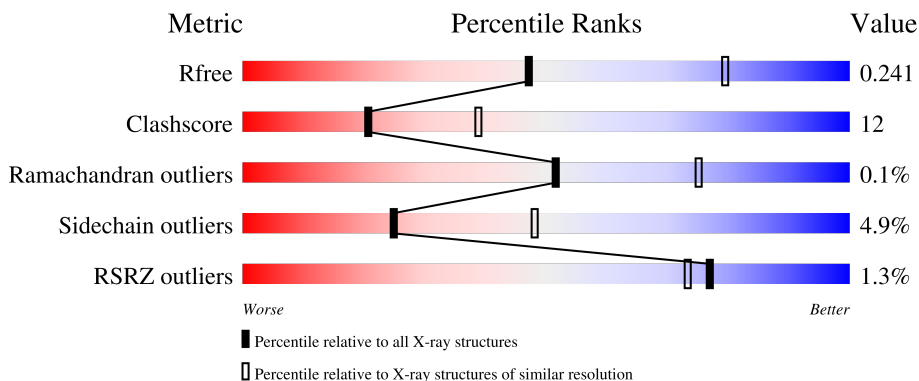
1 Overall quality at a glance

The following experimental techniques were used to determine the structure:

X-RAY DIFFRACTION

The reported resolution of this entry is 2.60 Å.

Percentile scores (ranging between 0-100) for global validation metrics of the entry are shown in the following graphic. The table shows the number of entries on which the scores are based.



Metric	Whole archive (#Entries)	Similar resolution (#Entries, resolution range(Å))
R_{free}	130704	3163 (2.60-2.60)
Clashscore	141614	3518 (2.60-2.60)
Ramachandran outliers	138981	3455 (2.60-2.60)
Sidechain outliers	138945	3455 (2.60-2.60)
RSRZ outliers	127900	3104 (2.60-2.60)

The table below summarises the geometric issues observed across the polymeric chains and their fit to the electron density. The red, orange, yellow and green segments of the lower bar indicate the fraction of residues that contain outliers for ≥ 3 , 2, 1 and 0 types of geometric quality criteria respectively. A grey segment represents the fraction of residues that are not modelled. The numeric value for each fraction is indicated below the corresponding segment, with a dot representing fractions $\leq 5\%$. The upper red bar (where present) indicates the fraction of residues that have poor fit to the electron density. The numeric value is given above the bar.

Mol	Chain	Length	Quality of chain
1	A	569	 2% 72% 22% . .
2	B	168	 77% 20% . .
3	C	34	 62% 26% . 9%

The following table lists non-polymeric compounds, carbohydrate monomers and non-standard residues in protein, DNA, RNA chains that are outliers for geometric or electron-density-fit criteria:

Mol	Type	Chain	Res	Chirality	Geometry	Clashes	Electron density
5	HAS	A	602	X	-	-	-
8	OLC	A	609	-	-	-	X
8	OLC	A	611	-	-	-	X
8	OLC	A	614	-	-	-	X
8	OLC	A	615	-	-	-	X

2 Entry composition [i](#)

There are 10 unique types of molecules in this entry. The entry contains 6374 atoms, of which 0 are hydrogens and 0 are deuteriums.

In the tables below, the ZeroOcc column contains the number of atoms modelled with zero occupancy, the AltConf column contains the number of residues with at least one atom in alternate conformation and the Trace column contains the number of residues modelled with at most 2 atoms.

- Molecule 1 is a protein called Cytochrome c oxidase subunit 1.

Mol	Chain	Residues	Atoms					ZeroOcc	AltConf	Trace
			Total	C	N	O	S			
1	A	554	4346	2950	692	688	16	0	0	0

There are 10 discrepancies between the modelled and reference sequences:

Chain	Residue	Modelled	Actual	Comment	Reference
A	-6	MET	-	expression tag	UNP Q5SJ79
A	-5	HIS	-	expression tag	UNP Q5SJ79
A	-4	HIS	-	expression tag	UNP Q5SJ79
A	-3	HIS	-	expression tag	UNP Q5SJ79
A	-2	HIS	-	expression tag	UNP Q5SJ79
A	-1	HIS	-	expression tag	UNP Q5SJ79
A	0	HIS	-	expression tag	UNP Q5SJ79
A	1	HIS	-	expression tag	UNP Q5SJ79
A	120	PHE	ALA	engineered mutation	UNP Q5SJ79
A	236	THR	VAL	engineered mutation	UNP Q5SJ79

- Molecule 2 is a protein called Cytochrome c oxidase subunit 2.

Mol	Chain	Residues	Atoms					ZeroOcc	AltConf	Trace
			Total	C	N	O	S			
2	B	166	1275	829	211	231	4	0	0	0

- Molecule 3 is a protein called Cytochrome c oxidase polypeptide 2A.

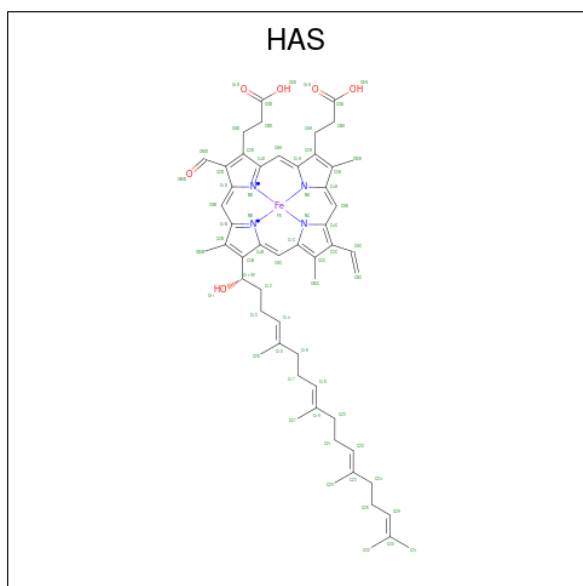
Mol	Chain	Residues	Atoms				ZeroOcc	AltConf	Trace
			Total	C	N	O			
3	C	31	237	166	36	35	0	0	0

- Molecule 4 is PROTOPORPHYRIN IX CONTAINING FE (three-letter code: HEM) (formula: C₃₄H₃₂FeN₄O₄).



Mol	Chain	Residues	Atoms				ZeroOcc	AltConf	
			Total	C	Fe	N			O
4	A	1	43	34	1	4	4	0	0

- Molecule 5 is HEME-AS (three-letter code: HAS) (formula: $C_{54}H_{64}FeN_4O_6$).

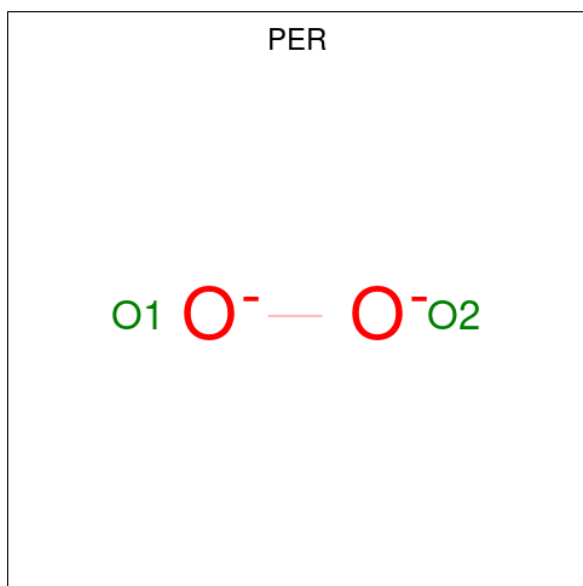


Mol	Chain	Residues	Atoms				ZeroOcc	AltConf	
			Total	C	Fe	N			O
5	A	1	65	54	1	4	6	0	0

- Molecule 6 is COPPER (II) ION (three-letter code: CU) (formula: Cu).

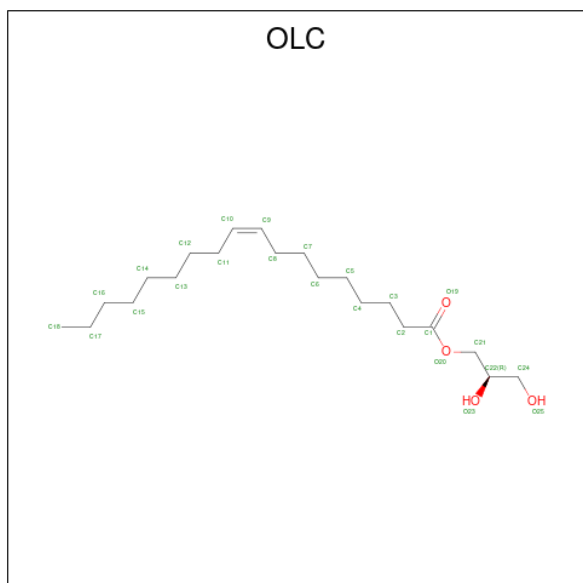
Mol	Chain	Residues	Atoms	ZeroOcc	AltConf
6	A	1	Total Cu 1 1	0	0

- Molecule 7 is PEROXIDE ION (three-letter code: PER) (formula: O₂).



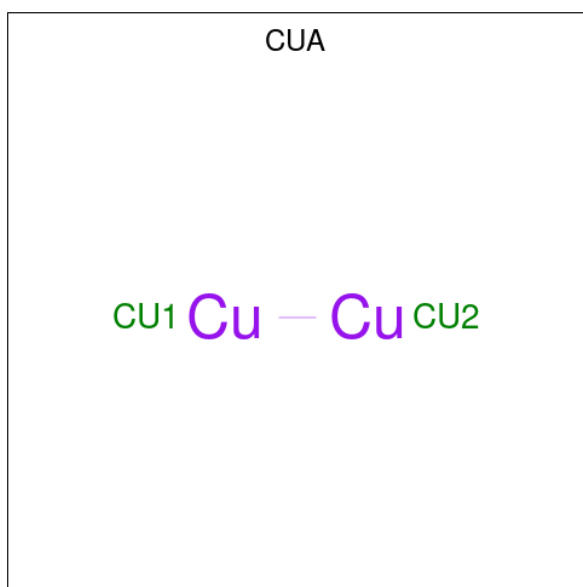
Mol	Chain	Residues	Atoms	ZeroOcc	AltConf
7	A	1	Total O 2 2	0	0

- Molecule 8 is (2R)-2,3-dihydroxypropyl (9Z)-octadec-9-enoate (three-letter code: OLC) (formula: C₂₁H₄₀O₄).



Mol	Chain	Residues	Atoms			ZeroOcc	AltConf
8	A	1	Total	C	O	0	0
			20	18	2		
8	A	1	Total	C	O	0	0
			22	18	4		
8	A	1	Total	C	O	0	0
			20	18	2		
8	A	1	Total	C	O	0	0
			18	14	4		
8	A	1	Total	C	O	0	0
			13	9	4		
8	A	1	Total	C	O	0	0
			8	4	4		
8	A	1	Total	C	O	0	0
			12	8	4		
8	A	1	Total	C	O	0	0
			9	7	2		
8	A	1	Total	C	O	0	0
			25	21	4		
8	A	1	Total	C	O	0	0
			13	9	4		
8	A	1	Total	C	O	0	0
			24	20	4		
8	B	1	Total	C	O	0	0
			24	20	4		
8	B	1	Total	C	O	0	0
			23	19	4		
8	B	1	Total	C	O	0	0
			16	12	4		
8	C	1	Total	C	O	0	0
			23	19	4		
8	C	1	Total	C		0	0
			13	13			

- Molecule 9 is DINUCLEAR COPPER ION (three-letter code: CUA) (formula: Cu₂).



Mol	Chain	Residues	Atoms	ZeroOcc	AltConf
9	B	1	Total Cu 2 2	0	0

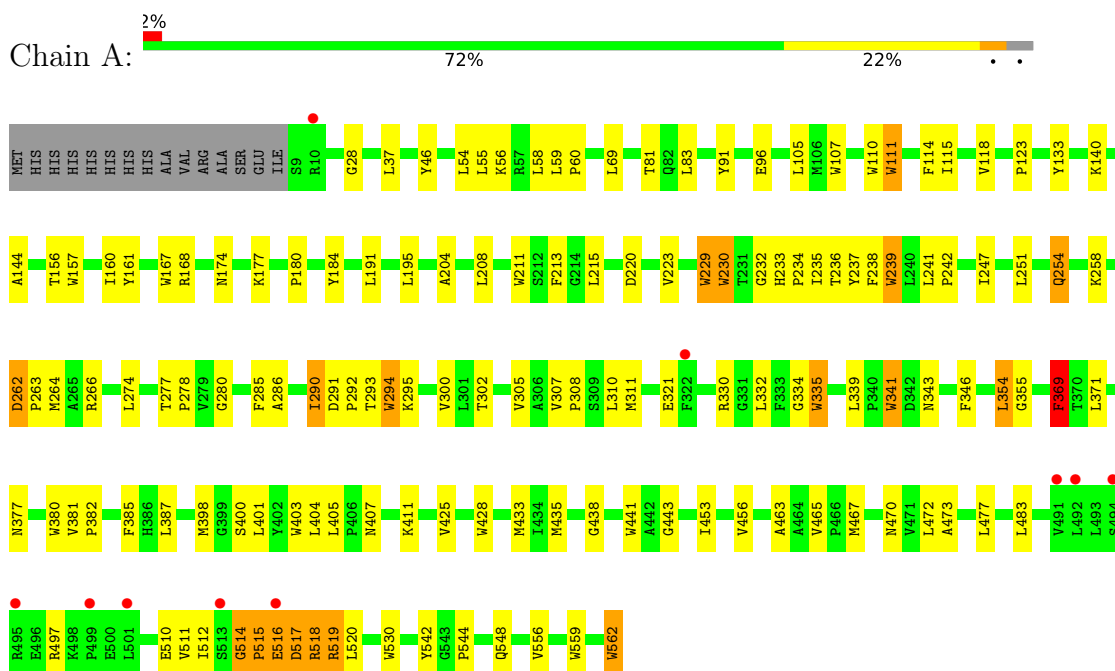
- Molecule 10 is water.

Mol	Chain	Residues	Atoms	ZeroOcc	AltConf
10	A	71	Total O 71 71	0	0
10	B	44	Total O 44 44	0	0
10	C	5	Total O 5 5	0	0

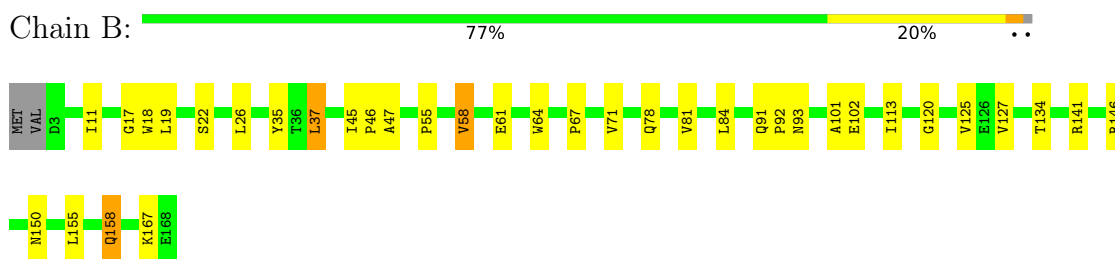
3 Residue-property plots [i](#)

These plots are drawn for all protein, RNA, DNA and oligosaccharide chains in the entry. The first graphic for a chain summarises the proportions of the various outlier classes displayed in the second graphic. The second graphic shows the sequence view annotated by issues in geometry and electron density. Residues are color-coded according to the number of geometric quality criteria for which they contain at least one outlier: green = 0, yellow = 1, orange = 2 and red = 3 or more. A red dot above a residue indicates a poor fit to the electron density ($RSRZ > 2$). Stretches of 2 or more consecutive residues without any outlier are shown as a green connector. Residues present in the sample, but not in the model, are shown in grey.

- Molecule 1: Cytochrome c oxidase subunit 1



- Molecule 2: Cytochrome c oxidase subunit 2



- Molecule 3: Cytochrome c oxidase polypeptide 2A



4 Data and refinement statistics

Property	Value	Source
Space group	C 1 2 1	Depositor
Cell constants a, b, c, α , β , γ	143.48Å 98.36Å 94.78Å 90.00° 127.39° 90.00°	Depositor
Resolution (Å)	75.30 – 2.60 75.30 – 2.60	Depositor EDS
% Data completeness (in resolution range)	97.9 (75.30-2.60) 97.9 (75.30-2.60)	Depositor EDS
R_{merge}	(Not available)	Depositor
R_{sym}	(Not available)	Depositor
$\langle I/\sigma(I) \rangle$ ¹	2.00 (at 2.62Å)	Xtrriage
Refinement program	REFMAC 5.6.0117	Depositor
R, R_{free}	0.194 , 0.252 0.186 , 0.241	Depositor DCC
R_{free} test set	1603 reflections (5.07%)	wwPDB-VP
Wilson B-factor (Å ²)	39.2	Xtrriage
Anisotropy	0.254	Xtrriage
Bulk solvent k_{sol} (e/Å ³), B_{sol} (Å ²)	0.37 , 53.6	EDS
L-test for twinning ²	$\langle L \rangle = 0.49$, $\langle L^2 \rangle = 0.32$	Xtrriage
Estimated twinning fraction	No twinning to report.	Xtrriage
F_o, F_c correlation	0.94	EDS
Total number of atoms	6374	wwPDB-VP
Average B, all atoms (Å ²)	34.0	wwPDB-VP

Xtrriage's analysis on translational NCS is as follows: *The largest off-origin peak in the Patterson function is 5.96% of the height of the origin peak. No significant pseudotranslation is detected.*

¹Intensities estimated from amplitudes.

²Theoretical values of $\langle |L| \rangle$, $\langle L^2 \rangle$ for acentric reflections are 0.5, 0.333 respectively for untwinned datasets, and 0.375, 0.2 for perfectly twinned datasets.

5 Model quality i

5.1 Standard geometry i

Bond lengths and bond angles in the following residue types are not validated in this section: CU, OLC, HEM, HAS, CUA, PER

The Z score for a bond length (or angle) is the number of standard deviations the observed value is removed from the expected value. A bond length (or angle) with $|Z| > 5$ is considered an outlier worth inspection. RMSZ is the root-mean-square of all Z scores of the bond lengths (or angles).

Mol	Chain	Bond lengths		Bond angles	
		RMSZ	# Z >5	RMSZ	# Z >5
1	A	1.14	18/4503 (0.4%)	1.07	7/6186 (0.1%)
2	B	0.83	0/1311	0.88	1/1795 (0.1%)
3	C	0.88	0/243	0.91	1/331 (0.3%)
All	All	1.08	18/6057 (0.3%)	1.03	9/8312 (0.1%)

All (18) bond length outliers are listed below:

Mol	Chain	Res	Type	Atoms	Z	Observed(Å)	Ideal(Å)
1	A	354	LEU	CA-CB	35.81	2.36	1.53
1	A	354	LEU	CG-CD2	26.95	2.51	1.51
1	A	530	TRP	CD2-CE2	6.81	1.49	1.41
1	A	157	TRP	CD2-CE2	6.21	1.48	1.41
1	A	294	TRP	CD2-CE2	6.02	1.48	1.41
1	A	230	TRP	CD2-CE2	6.00	1.48	1.41
1	A	559	TRP	CD2-CE2	5.94	1.48	1.41
1	A	229	TRP	CD2-CE2	5.75	1.48	1.41
1	A	110	TRP	CD2-CE2	5.75	1.48	1.41
1	A	341	TRP	CD2-CE2	5.70	1.48	1.41
1	A	335	TRP	CD2-CE2	5.61	1.48	1.41
1	A	380	TRP	CD2-CE2	5.57	1.48	1.41
1	A	441	TRP	CD2-CE2	5.43	1.47	1.41
1	A	107	TRP	CD2-CE2	5.30	1.47	1.41
1	A	239	TRP	CD2-CE2	5.28	1.47	1.41
1	A	562	TRP	CD2-CE2	5.25	1.47	1.41
1	A	428	TRP	CD2-CE2	5.18	1.47	1.41
1	A	111	TRP	CD2-CE2	5.06	1.47	1.41

All (9) bond angle outliers are listed below:

Mol	Chain	Res	Type	Atoms	Z	Observed(°)	Ideal(°)
1	A	354	LEU	CB-CG-CD2	-44.71	35.00	111.00
1	A	354	LEU	CB-CA-C	18.11	144.62	110.20
1	A	514	GLY	N-CA-C	-8.55	91.72	113.10
1	A	354	LEU	CA-CB-CG	-8.11	96.66	115.30
1	A	291	ASP	CB-CG-OD2	6.89	124.51	118.30
1	A	332	LEU	CA-CB-CG	6.45	130.13	115.30
2	B	146	ARG	NE-CZ-NH2	-5.41	117.59	120.30
1	A	515	PRO	N-CA-C	-5.15	98.71	112.10
3	C	13	LEU	CA-CB-CG	5.03	126.87	115.30

There are no chirality outliers.

There are no planarity outliers.

5.2 Too-close contacts [i](#)

In the following table, the Non-H and H(model) columns list the number of non-hydrogen atoms and hydrogen atoms in the chain respectively. The H(added) column lists the number of hydrogen atoms added and optimized by MolProbity. The Clashes column lists the number of clashes within the asymmetric unit, whereas Symm-Clashes lists symmetry-related clashes.

Mol	Chain	Non-H	H(model)	H(added)	Clashes	Symm-Clashes
1	A	4346	0	4417	111	0
2	B	1275	0	1234	28	0
3	C	237	0	256	7	0
4	A	43	0	30	5	0
5	A	65	0	62	3	0
6	A	1	0	0	0	0
7	A	2	0	0	1	0
8	A	184	0	245	26	0
8	B	63	0	89	10	0
8	C	36	0	53	6	0
9	B	2	0	0	0	0
10	A	71	0	0	6	0
10	B	44	0	0	6	2
10	C	5	0	0	0	0
All	All	6374	0	6386	155	2

The all-atom clashscore is defined as the number of clashes found per 1000 atoms (including hydrogen atoms). The all-atom clashscore for this structure is 12.

All (155) close contacts within the same asymmetric unit are listed below, sorted by their clash magnitude.

Atom-1	Atom-2	Interatomic distance (Å)	Clash overlap (Å)
1:A:233:HIS:NE2	1:A:237:TYR:CE1	1.70	1.56
1:A:233:HIS:NE2	1:A:237:TYR:HE1	0.78	1.26
7:A:604:PER:O1	7:A:604:PER:O2	1.52	1.23
1:A:233:HIS:CD2	1:A:237:TYR:HE1	1.74	1.05
1:A:354:LEU:CA	1:A:354:LEU:CB	2.36	1.04
8:B:203:OLC:H6	3:C:33:ARG:HE	1.39	0.87
2:B:120:GLY:HA2	8:B:203:OLC:H2	1.59	0.85
1:A:233:HIS:CD2	1:A:237:TYR:CE1	2.55	0.84
10:A:705:HOH:O	8:B:203:OLC:H4A	1.79	0.83
1:A:517:ASP:HA	1:A:519:ARG:HH21	1.43	0.82
8:A:605:OLC:H12	8:A:613:OLC:H14A	1.65	0.78
1:A:411:LYS:HE3	1:A:497:ARG:HH21	1.49	0.76
1:A:517:ASP:HB2	1:A:519:ARG:HE	1.50	0.76
8:A:613:OLC:H21A	10:A:706:HOH:O	1.84	0.76
1:A:220:ASP:HB3	1:A:223:VAL:HG12	1.68	0.75
1:A:514:GLY:O	1:A:515:PRO:C	2.20	0.75
2:B:101:ALA:O	10:B:314:HOH:O	2.05	0.74
2:B:47:ALA:O	10:B:341:HOH:O	2.07	0.73
5:A:602:HAS:HMC1	5:A:602:HAS:HBC1	1.72	0.71
1:A:465:VAL:HG13	8:A:612:OLC:H5A	1.73	0.71
2:B:35:TYR:OH	8:B:202:OLC:H24A	1.91	0.70
2:B:141:ARG:HH12	8:B:203:OLC:H24A	1.57	0.69
1:A:168:ARG:HH11	8:A:610:OLC:C22	2.08	0.67
4:A:601:HEM:O2A	10:A:717:HOH:O	2.13	0.67
1:A:167:TRP:CZ3	8:A:611:OLC:H22	2.29	0.67
4:A:601:HEM:HBC2	4:A:601:HEM:HMC1	1.76	0.66
1:A:167:TRP:CH2	8:A:611:OLC:H22	2.31	0.65
8:C:101:OLC:H10	8:C:102:OLC:H8	1.79	0.65
1:A:161:TYR:CE2	8:A:610:OLC:H21	2.32	0.65
1:A:123:PRO:HG3	1:A:144:ALA:HB3	1.80	0.64
1:A:443:GLY:O	10:A:737:HOH:O	2.15	0.63
1:A:233:HIS:CE1	1:A:237:TYR:CE1	2.75	0.63
1:A:293:THR:HG23	8:A:607:OLC:H8	1.82	0.61
1:A:463:ALA:O	1:A:467:MET:HG3	1.99	0.61
2:B:17:GLY:HA3	8:B:204:OLC:H3	1.84	0.60
1:A:156:THR:O	1:A:160:ILE:HG13	2.01	0.59
1:A:174:ASN:HB3	1:A:177:LYS:HD2	1.85	0.59
1:A:111:TRP:HE3	1:A:115:ILE:CD1	2.16	0.58
8:A:606:OLC:H13A	8:A:613:OLC:H12	1.84	0.58
1:A:69:LEU:HD11	4:A:601:HEM:HBD2	1.86	0.58
1:A:232:GLY:O	1:A:235:ILE:HG22	2.04	0.58
1:A:233:HIS:NE2	1:A:237:TYR:CZ	2.62	0.58

Continued on next page...

Continued from previous page...

Atom-1	Atom-2	Interatomic distance (Å)	Clash overlap (Å)
1:A:382:PRO:HA	1:A:385:PHE:CE2	2.39	0.58
1:A:401:LEU:O	1:A:405:LEU:HB2	2.04	0.58
8:B:203:OLC:H7A	8:C:101:OLC:O25	2.04	0.57
1:A:168:ARG:NH1	8:A:610:OLC:C22	2.68	0.57
1:A:403:TRP:CZ3	1:A:404:LEU:HD13	2.40	0.57
8:A:613:OLC:C8	8:A:613:OLC:H13A	2.34	0.56
3:C:18:THR:HG23	8:C:102:OLC:H12A	1.86	0.56
1:A:277:THR:N	1:A:278:PRO:CD	2.69	0.55
1:A:229:TRP:CE3	1:A:232:GLY:HA3	2.43	0.54
3:C:18:THR:HG23	8:C:102:OLC:C12	2.38	0.54
1:A:339:LEU:HD13	1:A:346:PHE:HZ	1.73	0.54
1:A:398:MET:O	1:A:401:LEU:HB2	2.08	0.53
2:B:58:VAL:O	10:B:344:HOH:O	2.17	0.53
1:A:341:TRP:CZ2	8:A:615:OLC:H3	2.44	0.53
1:A:341:TRP:CE2	8:A:615:OLC:H3	2.43	0.53
2:B:91:GLN:OE1	10:B:319:HOH:O	2.19	0.53
4:A:601:HEM:HBC2	4:A:601:HEM:CMC	2.38	0.52
1:A:517:ASP:CA	1:A:519:ARG:HH21	2.20	0.52
2:B:93:ASN:O	10:B:309:HOH:O	2.19	0.52
10:A:705:HOH:O	8:B:203:OLC:H6A	2.09	0.52
8:B:203:OLC:H6	3:C:33:ARG:NE	2.19	0.52
1:A:294:TRP:CZ2	1:A:544:PRO:HG2	2.45	0.52
1:A:562:TRP:HA	2:B:155:LEU:HG	1.92	0.52
1:A:55:LEU:HD11	1:A:59:LEU:HD12	1.92	0.52
1:A:382:PRO:HA	1:A:385:PHE:CZ	2.46	0.51
1:A:465:VAL:HG22	8:A:612:OLC:H3A	1.91	0.51
1:A:355:GLY:HA3	1:A:433:MET:HE1	1.93	0.51
1:A:400:SER:HB2	1:A:403:TRP:CZ2	2.46	0.50
1:A:377:ASN:HB3	2:B:150:ASN:HB2	1.93	0.50
2:B:11:ILE:HA	3:C:5:PRO:HG3	1.92	0.50
1:A:292:PRO:CB	8:A:607:OLC:H3A	2.41	0.50
1:A:518:ARG:NH2	10:A:760:HOH:O	2.44	0.50
1:A:111:TRP:HE3	1:A:115:ILE:HD11	1.75	0.50
1:A:290:ILE:HB	1:A:295:LYS:HE3	1.93	0.50
1:A:280:GLY:HA3	1:A:542:TYR:OH	2.13	0.49
1:A:321:GLU:HA	1:A:335:TRP:CE3	2.48	0.49
1:A:371:LEU:HD21	3:C:27:TYR:HD1	1.77	0.49
8:A:613:OLC:H13A	8:A:613:OLC:H8A	1.93	0.49
1:A:341:TRP:HB3	8:A:606:OLC:H24A	1.95	0.49
2:B:18:TRP:CE3	3:C:12:ILE:HD13	2.47	0.49
2:B:158:GLN:H	2:B:158:GLN:NE2	2.11	0.49

Continued on next page...

Continued from previous page...

Atom-1	Atom-2	Interatomic distance (Å)	Clash overlap (Å)
1:A:254:GLN:HG2	1:A:343:ASN:HD21	1.78	0.48
1:A:263:PRO:HG2	1:A:516:GLU:HB3	1.94	0.48
1:A:247:ILE:HA	1:A:251:LEU:HB2	1.96	0.48
1:A:213:PHE:CD2	8:A:608:OLC:H4	2.48	0.48
1:A:472:LEU:HD22	8:A:613:OLC:H11	1.95	0.48
1:A:300:VAL:HG11	8:A:607:OLC:H16	1.94	0.47
1:A:140:LYS:HE3	1:A:211:TRP:NE1	2.29	0.47
1:A:517:ASP:OD1	1:A:517:ASP:N	2.37	0.47
8:A:607:OLC:H4A	2:B:37:LEU:HG	1.96	0.47
8:C:101:OLC:C10	8:C:102:OLC:H7A	2.44	0.47
1:A:330:ARG:O	1:A:334:GLY:HA3	2.14	0.47
1:A:277:THR:N	1:A:278:PRO:HD2	2.30	0.47
1:A:292:PRO:HB2	8:A:607:OLC:H3A	1.96	0.47
1:A:435:MET:HB2	1:A:473:ALA:HB1	1.96	0.47
1:A:233:HIS:CD2	1:A:237:TYR:CD1	3.01	0.47
2:B:120:GLY:CA	8:B:203:OLC:H2	2.37	0.47
1:A:28:GLY:HA2	1:A:83:LEU:HD12	1.97	0.46
1:A:91:TYR:OH	1:A:407:ASN:ND2	2.48	0.46
1:A:556:VAL:CG1	2:B:55:PRO:HG3	2.45	0.46
1:A:263:PRO:HG2	1:A:516:GLU:CB	2.44	0.46
1:A:511:VAL:HG12	1:A:512:ILE:N	2.31	0.46
2:B:45:ILE:O	10:B:302:HOH:O	2.20	0.46
1:A:277:THR:H	1:A:278:PRO:CD	2.28	0.46
1:A:305:VAL:O	1:A:308:PRO:HD2	2.16	0.45
1:A:310:LEU:HD13	2:B:22:SER:HB3	1.97	0.45
2:B:67:PRO:O	2:B:92:PRO:HG3	2.17	0.45
1:A:381:VAL:HB	1:A:382:PRO:HD3	1.97	0.45
1:A:241:LEU:N	1:A:242:PRO:CD	2.80	0.45
1:A:300:VAL:HG11	8:A:607:OLC:C16	2.47	0.45
1:A:548:GLN:HG2	1:A:548:GLN:O	2.16	0.45
1:A:286:ALA:HB1	2:B:125:VAL:HA	1.98	0.45
1:A:111:TRP:CE3	1:A:115:ILE:HD11	2.53	0.44
1:A:254:GLN:CG	1:A:343:ASN:HD21	2.30	0.44
1:A:302:THR:O	1:A:305:VAL:HG12	2.18	0.44
1:A:236:THR:HB	5:A:602:HAS:CAC	2.48	0.44
1:A:354:LEU:CA	1:A:354:LEU:CG	2.96	0.44
1:A:387:LEU:CD2	1:A:433:MET:HE2	2.48	0.44
1:A:339:LEU:HD13	1:A:346:PHE:CZ	2.51	0.44
1:A:514:GLY:C	1:A:515:PRO:O	2.50	0.44
1:A:195:LEU:HD23	1:A:195:LEU:HA	1.82	0.43
1:A:258:LYS:HB3	1:A:510:GLU:O	2.18	0.43

Continued on next page...

Continued from previous page...

Atom-1	Atom-2	Interatomic distance (Å)	Clash overlap (Å)
8:A:607:OLC:H11A	8:A:607:OLC:H14A	1.79	0.43
2:B:64:TRP:HB3	2:B:84:LEU:HD13	2.00	0.43
1:A:114:PHE:O	1:A:118:VAL:HG23	2.18	0.43
2:B:113:ILE:HA	2:B:127:VAL:O	2.19	0.43
1:A:311:MET:HG3	2:B:19:LEU:HD21	2.01	0.43
1:A:96:GLU:OE2	1:A:180:PRO:HB2	2.19	0.43
1:A:438:GLY:HA3	1:A:470:ASN:OD1	2.19	0.43
1:A:233:HIS:CD2	1:A:233:HIS:C	2.93	0.43
1:A:477:LEU:HD13	4:A:601:HEM:HMB3	2.01	0.43
1:A:369:PHE:C	1:A:369:PHE:CD2	2.92	0.43
1:A:262:ASP:C	1:A:262:ASP:OD2	2.57	0.42
1:A:81:THR:HB	1:A:239:TRP:CD1	2.54	0.42
1:A:105:LEU:HA	1:A:105:LEU:HD23	1.76	0.42
1:A:184:TYR:CE2	1:A:266:ARG:HB3	2.55	0.42
1:A:285:PHE:CZ	1:A:369:PHE:HA	2.54	0.42
1:A:405:LEU:HD12	1:A:405:LEU:HA	1.96	0.42
1:A:46:TYR:HA	1:A:453:ILE:HD11	2.01	0.42
1:A:233:HIS:N	1:A:234:PRO:HD2	2.35	0.42
8:A:615:OLC:H13	8:A:615:OLC:H10	1.58	0.42
1:A:264:MET:HE1	2:B:19:LEU:HD11	2.02	0.42
1:A:307:VAL:N	1:A:308:PRO:HD2	2.35	0.41
2:B:46:PRO:HA	2:B:134:THR:O	2.20	0.41
1:A:483:LEU:HD23	1:A:483:LEU:HA	1.85	0.41
2:B:78:GLN:HG3	2:B:102:GLU:HB3	2.03	0.41
8:C:101:OLC:H10	8:C:102:OLC:C8	2.48	0.41
1:A:235:ILE:O	1:A:238:PHE:HB3	2.21	0.41
5:A:602:HAS:HMC1	5:A:602:HAS:CBC	2.44	0.41
1:A:191:LEU:HD11	8:A:611:OLC:H3	2.04	0.40
1:A:56:LYS:O	1:A:60:PRO:HA	2.22	0.40
1:A:204:ALA:HA	1:A:208:LEU:HB2	2.04	0.40
2:B:71:VAL:HG22	2:B:81:VAL:HG22	2.04	0.40

All (2) symmetry-related close contacts are listed below. The label for Atom-2 includes the symmetry operator and encoded unit-cell translations to be applied.

Atom-1	Atom-2	Interatomic distance (Å)	Clash overlap (Å)
10:B:306:HOH:O	10:B:320:HOH:O[2_556]	1.32	0.88
10:B:323:HOH:O	10:B:323:HOH:O[2_556]	1.41	0.79

5.3 Torsion angles [i](#)

5.3.1 Protein backbone [i](#)

In the following table, the Percentiles column shows the percent Ramachandran outliers of the chain as a percentile score with respect to all X-ray entries followed by that with respect to entries of similar resolution.

The Analysed column shows the number of residues for which the backbone conformation was analysed, and the total number of residues.

Mol	Chain	Analysed	Favoured	Allowed	Outliers	Percentiles	
1	A	552/569 (97%)	522 (95%)	29 (5%)	1 (0%)	47	71
2	B	164/168 (98%)	158 (96%)	6 (4%)	0	100	100
3	C	29/34 (85%)	28 (97%)	1 (3%)	0	100	100
All	All	745/771 (97%)	708 (95%)	36 (5%)	1 (0%)	51	75

All (1) Ramachandran outliers are listed below:

Mol	Chain	Res	Type
1	A	369	PHE

5.3.2 Protein sidechains [i](#)

In the following table, the Percentiles column shows the percent sidechain outliers of the chain as a percentile score with respect to all X-ray entries followed by that with respect to entries of similar resolution.

The Analysed column shows the number of residues for which the sidechain conformation was analysed, and the total number of residues.

Mol	Chain	Analysed	Rotameric	Outliers	Percentiles	
1	A	440/464 (95%)	422 (96%)	18 (4%)	30	56
2	B	131/138 (95%)	125 (95%)	6 (5%)	27	51
3	C	23/27 (85%)	18 (78%)	5 (22%)	1	1
All	All	594/629 (94%)	565 (95%)	29 (5%)	25	48

All (29) residues with a non-rotameric sidechain are listed below:

Mol	Chain	Res	Type
1	A	37	LEU
1	A	54	LEU

Continued on next page...

Continued from previous page...

Mol	Chain	Res	Type
1	A	58	LEU
1	A	133	TYR
1	A	215	LEU
1	A	230	TRP
1	A	254	GLN
1	A	262	ASP
1	A	274	LEU
1	A	290	ILE
1	A	369	PHE
1	A	425	VAL
1	A	456	VAL
1	A	516	GLU
1	A	517	ASP
1	A	518	ARG
1	A	519	ARG
1	A	520	LEU
2	B	26	LEU
2	B	37	LEU
2	B	58	VAL
2	B	61	GLU
2	B	158	GLN
2	B	167	LYS
3	C	13	LEU
3	C	17	LEU
3	C	20	LEU
3	C	23	TRP
3	C	24	LEU

Sometimes sidechains can be flipped to improve hydrogen bonding and reduce clashes. All (3) such sidechains are listed below:

Mol	Chain	Res	Type
1	A	407	ASN
2	B	93	ASN
2	B	158	GLN

5.3.3 RNA [i](#)

There are no RNA molecules in this entry.

5.4 Non-standard residues in protein, DNA, RNA chains [i](#)

There are no non-standard protein/DNA/RNA residues in this entry.

5.5 Carbohydrates [i](#)

There are no monosaccharides in this entry.

5.6 Ligand geometry [i](#)

Of 21 ligands modelled in this entry, 1 is monoatomic - leaving 20 for Mogul analysis.

In the following table, the Counts columns list the number of bonds (or angles) for which Mogul statistics could be retrieved, the number of bonds (or angles) that are observed in the model and the number of bonds (or angles) that are defined in the Chemical Component Dictionary. The Link column lists molecule types, if any, to which the group is linked. The Z score for a bond length (or angle) is the number of standard deviations the observed value is removed from the expected value. A bond length (or angle) with $|Z| > 2$ is considered an outlier worth inspection. RMSZ is the root-mean-square of all Z scores of the bond lengths (or angles).

Mol	Type	Chain	Res	Link	Bond lengths			Bond angles		
					Counts	RMSZ	# Z > 2	Counts	RMSZ	# Z > 2
8	OLC	A	612	-	8,8,24	0.64	0	8,8,25	1.48	1 (12%)
8	OLC	B	204	-	15,15,24	0.51	0	16,16,25	0.62	0
8	OLC	C	101	-	22,22,24	0.53	0	23,23,25	0.74	0
8	OLC	B	202	-	23,23,24	0.50	0	24,24,25	0.74	1 (4%)
8	OLC	A	611	-	11,11,24	0.73	0	12,12,25	0.56	0
8	OLC	A	615	-	23,23,24	0.49	0	24,24,25	0.95	1 (4%)
8	OLC	A	607	-	19,19,24	0.65	1 (5%)	19,19,25	0.68	1 (5%)
8	OLC	A	613	-	24,24,24	0.66	1 (4%)	25,25,25	0.94	1 (4%)
8	OLC	A	614	-	12,12,24	0.62	0	13,13,25	0.87	0
8	OLC	A	605	-	19,19,24	0.48	0	19,19,25	0.84	0
4	HEM	A	601	1	41,50,50	2.74	19 (46%)	45,82,82	2.52	17 (37%)
8	OLC	A	610	-	7,7,24	0.41	0	6,7,25	0.84	0
8	OLC	A	609	-	12,12,24	0.74	0	13,13,25	0.60	0
8	OLC	A	606	-	21,21,24	0.55	0	22,22,25	1.22	3 (13%)
9	CUA	B	201	2	0,1,1	-	-	-	-	-
7	PER	A	604	5,6	0,1,1	-	-	-	-	-
8	OLC	C	102	-	12,12,24	0.12	0	11,11,25	0.65	0
8	OLC	A	608	-	17,17,24	0.55	0	18,18,25	0.54	0
8	OLC	B	203	-	22,22,24	0.83	1 (4%)	23,23,25	1.53	3 (13%)
5	HAS	A	602	7,1	69,72,72	2.35	25 (36%)	73,109,109	1.74	15 (20%)

In the following table, the Chirals column lists the number of chiral outliers, the number of chiral centers analysed, the number of these observed in the model and the number defined in the Chemical Component Dictionary. Similar counts are reported in the Torsion and Rings columns. '-' means no outliers of that kind were identified.

Mol	Type	Chain	Res	Link	Chirals	Torsions	Rings
8	OLC	A	615	-	-	9/23/23/24	-
8	OLC	A	612	-	-	5/6/6/24	-
8	OLC	B	204	-	-	5/15/15/24	-
8	OLC	A	610	-	-	4/6/6/24	-
8	OLC	C	102	-	-	8/10/10/24	-
8	OLC	A	607	-	-	9/18/18/24	-
8	OLC	A	613	-	-	16/24/24/24	-
8	OLC	A	609	-	-	6/12/12/24	-
8	OLC	A	608	-	-	6/17/17/24	-
8	OLC	A	606	-	-	9/21/21/24	-
8	OLC	A	614	-	-	8/12/12/24	-
8	OLC	B	203	-	-	9/22/22/24	-
5	HAS	A	602	7,1	1/1/8/18	9/40/82/82	-
8	OLC	C	101	-	-	11/22/22/24	-
8	OLC	A	605	-	-	8/18/18/24	-
8	OLC	B	202	-	-	11/23/23/24	-
8	OLC	A	611	-	-	5/11/11/24	-
4	HEM	A	601	1	-	5/12/54/54	-

All (47) bond length outliers are listed below:

Mol	Chain	Res	Type	Atoms	Z	Observed(Å)	Ideal(Å)
5	A	602	HAS	C3C-C2C	8.32	1.51	1.40
5	A	602	HAS	C3C-CAC	-7.05	1.33	1.47
4	A	601	HEM	C3B-C2B	6.26	1.50	1.37
5	A	602	HAS	CHB-C1D	5.96	1.50	1.38
4	A	601	HEM	CAB-C3B	-5.74	1.31	1.47
4	A	601	HEM	C3C-C2C	5.73	1.48	1.40
4	A	601	HEM	C1B-C2B	-5.55	1.33	1.44
4	A	601	HEM	CHB-C1B	5.48	1.49	1.35
5	A	602	HAS	CHA-C4D	5.05	1.50	1.39
4	A	601	HEM	CBB-CAB	4.40	1.52	1.30
4	A	601	HEM	C1A-NA	4.36	1.45	1.36
5	A	602	HAS	C4C-NC	4.04	1.44	1.36
5	A	602	HAS	C4D-ND	3.75	1.46	1.38

Continued on next page...

Continued from previous page...

Mol	Chain	Res	Type	Atoms	Z	Observed(Å)	Ideal(Å)
5	A	602	HAS	O1D-CGD	3.69	1.34	1.22
4	A	601	HEM	C2C-C1C	-3.58	1.34	1.42
5	A	602	HAS	CHD-C4A	-3.47	1.30	1.35
4	A	601	HEM	C1A-CHA	3.34	1.50	1.41
5	A	602	HAS	CBC-CAC	3.29	1.51	1.29
5	A	602	HAS	CMD-C2D	3.21	1.52	1.45
5	A	602	HAS	CHA-C1A	-3.14	1.32	1.38
5	A	602	HAS	C1D-ND	3.13	1.45	1.40
5	A	602	HAS	C4B-C3B	3.08	1.49	1.44
4	A	601	HEM	CHD-C1D	-2.94	1.32	1.41
4	A	601	HEM	C4D-ND	-2.87	1.35	1.40
4	A	601	HEM	C1D-C2D	2.85	1.50	1.44
5	A	602	HAS	CHB-C1B	-2.85	1.32	1.39
4	A	601	HEM	C1B-NB	-2.81	1.35	1.40
5	A	602	HAS	C1C-CHC	2.79	1.48	1.41
5	A	602	HAS	FE-NA	2.66	2.06	1.95
5	A	602	HAS	C1A-C2A	2.55	1.49	1.45
5	A	602	HAS	O2D-CGD	-2.54	1.22	1.30
8	B	203	OLC	O20-C1	2.53	1.40	1.33
4	A	601	HEM	C4A-CHB	-2.46	1.34	1.41
4	A	601	HEM	C3B-C4B	2.43	1.49	1.44
5	A	602	HAS	C2A-C3A	-2.34	1.31	1.36
5	A	602	HAS	C1B-C2B	2.25	1.48	1.44
4	A	601	HEM	CHC-C4B	-2.25	1.34	1.41
8	A	607	OLC	O20-C1	2.18	1.39	1.33
5	A	602	HAS	C2D-C1D	2.18	1.49	1.44
4	A	601	HEM	FE-NB	2.17	2.07	1.96
4	A	601	HEM	C4D-C3D	2.15	1.48	1.45
5	A	602	HAS	C4C-CHD	2.13	1.46	1.41
4	A	601	HEM	C1D-ND	-2.08	1.34	1.38
8	A	613	OLC	O20-C1	2.08	1.39	1.33
5	A	602	HAS	C4B-NB	-2.08	1.36	1.40
5	A	602	HAS	C4A-C3A	2.07	1.49	1.45
5	A	602	HAS	C4A-NA	-2.04	1.35	1.39

All (43) bond angle outliers are listed below:

Mol	Chain	Res	Type	Atoms	Z	Observed(°)	Ideal(°)
4	A	601	HEM	C4B-C3B-C2B	-7.64	101.05	107.11
4	A	601	HEM	CHC-C4B-NB	7.01	132.05	124.43
5	A	602	HAS	C1D-ND-C4D	-5.36	99.54	105.07
4	A	601	HEM	CMA-C3A-C4A	-4.97	120.83	128.46

Continued on next page...

Continued from previous page...

Mol	Chain	Res	Type	Atoms	Z	Observed(°)	Ideal(°)
5	A	602	HAS	CHB-C1B-C2B	-4.79	117.50	124.98
4	A	601	HEM	C1B-NB-C4B	4.62	109.84	105.07
5	A	602	HAS	CAA-CBA-CGA	-4.35	104.25	113.60
5	A	602	HAS	CAD-CBD-CGD	-4.29	104.36	113.60
8	B	203	OLC	O20-C21-C22	4.00	125.10	105.77
5	A	602	HAS	C27-C19-C20	3.88	121.80	115.27
4	A	601	HEM	CHA-C4D-ND	3.73	128.99	124.38
8	B	203	OLC	C21-O20-C1	3.68	130.74	117.12
8	B	203	OLC	C21-C22-C24	3.58	124.40	111.67
4	A	601	HEM	C4D-ND-C1D	3.58	108.77	105.07
8	A	612	OLC	C4-C3-C2	-3.32	101.25	113.19
4	A	601	HEM	CHD-C1D-ND	3.25	127.96	124.43
4	A	601	HEM	CAD-CBD-CGD	-3.19	106.74	113.60
4	A	601	HEM	C3B-C2B-C1B	3.11	108.79	106.49
5	A	602	HAS	CMB-C2B-C3B	-2.99	124.64	130.34
8	A	606	OLC	O20-C21-C22	-2.94	91.56	105.77
5	A	602	HAS	C12-C13-C14	2.87	119.82	112.23
5	A	602	HAS	C20-C19-C18	-2.85	115.35	121.12
5	A	602	HAS	C21-C22-C23	-2.82	120.86	127.66
4	A	601	HEM	CBA-CAA-C2A	-2.80	107.84	112.62
5	A	602	HAS	CHB-C1D-ND	-2.78	120.95	124.37
4	A	601	HEM	CHA-C4D-C3D	-2.75	120.17	125.33
5	A	602	HAS	CHC-C4B-NB	2.69	127.70	124.38
4	A	601	HEM	CHB-C1B-C2B	-2.58	119.59	126.72
4	A	601	HEM	O2A-CGA-CBA	2.46	121.92	114.03
8	A	615	OLC	C3-C2-C1	-2.41	104.85	113.62
8	A	606	OLC	C21-O20-C1	2.34	125.79	117.12
8	A	606	OLC	C21-C22-C24	2.30	119.84	111.67
8	A	607	OLC	C21-O20-C1	2.28	123.63	116.11
4	A	601	HEM	C4A-C3A-C2A	2.26	108.57	107.00
8	A	613	OLC	O20-C21-C22	2.22	116.50	105.77
5	A	602	HAS	C25-C23-C24	2.21	118.98	115.27
5	A	602	HAS	CHA-C1A-C2A	-2.19	121.38	124.94
4	A	601	HEM	CMB-C2B-C3B	-2.16	123.01	128.30
5	A	602	HAS	C4A-NA-C1A	-2.14	103.25	105.35
4	A	601	HEM	O1A-CGA-CBA	-2.10	116.33	123.08
5	A	602	HAS	C4A-C3A-C2A	-2.05	103.94	106.94
8	B	202	OLC	O20-C21-C22	2.03	115.55	105.77
4	A	601	HEM	CMB-C2B-C1B	2.02	128.12	125.04

All (1) chirality outliers are listed below:

Mol	Chain	Res	Type	Atom
5	A	602	HAS	NA

All (143) torsion outliers are listed below:

Mol	Chain	Res	Type	Atoms
4	A	601	HEM	C2B-C3B-CAB-CBB
5	A	602	HAS	C1D-C2D-CMD-OMD
8	A	606	OLC	C21-C22-C24-O25
8	A	609	OLC	O20-C21-C22-C24
8	A	610	OLC	O20-C21-C22-C24
8	A	610	OLC	O19-C1-O20-C21
8	A	611	OLC	O20-C21-C22-C24
8	A	613	OLC	C21-C22-C24-O25
8	A	613	OLC	O20-C21-C22-C24
8	A	614	OLC	C21-C22-C24-O25
8	A	614	OLC	O20-C21-C22-C24
8	A	615	OLC	O20-C21-C22-C24
8	A	615	OLC	O20-C21-C22-O23
8	B	202	OLC	C21-C22-C24-O25
8	B	204	OLC	C21-C22-C24-O25
8	A	609	OLC	O19-C1-O20-C21
8	A	609	OLC	C2-C1-O20-C21
8	A	613	OLC	C2-C3-C4-C5
8	A	610	OLC	O20-C21-C22-O23
8	A	611	OLC	O20-C21-C22-O23
8	A	613	OLC	O20-C21-C22-O23
8	A	614	OLC	O20-C21-C22-O23
5	A	602	HAS	C17-C18-C19-C27
8	B	203	OLC	C2-C1-O20-C21
8	C	101	OLC	C2-C1-O20-C21
8	A	606	OLC	O20-C21-C22-C24
8	A	608	OLC	O20-C21-C22-C24
8	B	203	OLC	O20-C21-C22-C24
8	A	605	OLC	C2-C1-O20-C21
8	A	607	OLC	C2-C1-O20-C21
8	B	203	OLC	O19-C1-O20-C21
8	A	608	OLC	O20-C21-C22-O23
8	A	609	OLC	O20-C21-C22-O23
8	B	203	OLC	O20-C21-C22-O23
8	A	614	OLC	C1-C2-C3-C4
8	B	204	OLC	C1-C2-C3-C4
8	C	101	OLC	O19-C1-O20-C21
8	A	606	OLC	O23-C22-C24-O25

Continued on next page...

Continued from previous page...

Mol	Chain	Res	Type	Atoms
8	A	615	OLC	C10-C11-C12-C13
8	A	606	OLC	O20-C21-C22-O23
8	A	607	OLC	C13-C14-C15-C16
8	A	613	OLC	C2-C1-O20-C21
8	A	615	OLC	C6-C7-C8-C9
8	A	613	OLC	C12-C13-C14-C15
8	C	101	OLC	C5-C6-C7-C8
8	A	613	OLC	C13-C14-C15-C16
8	A	613	OLC	O19-C1-O20-C21
8	A	605	OLC	C4-C5-C6-C7
8	A	611	OLC	C21-C22-C24-O25
8	B	203	OLC	C6-C7-C8-C9
8	C	102	OLC	C6-C7-C8-C9
8	A	612	OLC	C2-C3-C4-C5
8	B	202	OLC	C3-C4-C5-C6
8	C	102	OLC	C12-C13-C14-C15
8	A	613	OLC	O23-C22-C24-O25
8	A	614	OLC	O23-C22-C24-O25
8	B	202	OLC	O23-C22-C24-O25
8	B	204	OLC	O23-C22-C24-O25
8	B	203	OLC	C2-C3-C4-C5
8	A	608	OLC	C6-C7-C8-C9
8	B	202	OLC	C6-C7-C8-C9
8	A	605	OLC	O19-C1-O20-C21
8	A	607	OLC	O19-C1-O20-C21
8	A	615	OLC	C12-C13-C14-C15
8	A	607	OLC	C11-C12-C13-C14
8	C	102	OLC	C10-C11-C12-C13
8	B	203	OLC	C22-C21-O20-C1
8	C	101	OLC	C11-C12-C13-C14
8	B	204	OLC	C5-C6-C7-C8
8	B	203	OLC	C3-C4-C5-C6
8	C	101	OLC	C10-C11-C12-C13
8	A	612	OLC	C3-C4-C5-C6
8	A	613	OLC	C4-C5-C6-C7
8	A	605	OLC	C3-C4-C5-C6
8	C	101	OLC	C4-C5-C6-C7
8	C	102	OLC	C11-C12-C13-C14
8	B	202	OLC	C14-C15-C16-C17
8	A	614	OLC	C3-C4-C5-C6
8	C	102	OLC	C14-C15-C16-C17
8	A	605	OLC	C10-C11-C12-C13

Continued on next page...

Continued from previous page...

Mol	Chain	Res	Type	Atoms
8	A	613	OLC	C14-C15-C16-C17
8	A	606	OLC	C12-C13-C14-C15
8	A	614	OLC	C2-C1-O20-C21
8	A	615	OLC	C4-C5-C6-C7
8	A	608	OLC	C1-C2-C3-C4
8	A	607	OLC	C4-C5-C6-C7
8	A	613	OLC	C11-C12-C13-C14
8	A	614	OLC	O19-C1-O20-C21
8	A	606	OLC	C11-C12-C13-C14
8	A	613	OLC	C15-C16-C17-C18
8	B	202	OLC	C11-C12-C13-C14
8	C	102	OLC	C13-C14-C15-C16
8	A	606	OLC	C6-C7-C8-C9
8	A	605	OLC	C2-C3-C4-C5
8	B	202	OLC	C2-C1-O20-C21
8	A	608	OLC	C4-C5-C6-C7
8	A	607	OLC	C10-C11-C12-C13
8	C	101	OLC	C6-C7-C8-C9
8	A	615	OLC	C14-C15-C16-C17
8	C	101	OLC	C1-C2-C3-C4
8	B	202	OLC	O19-C1-O20-C21
5	A	602	HAS	C23-C24-C28-C29
5	A	602	HAS	C11-C12-C13-C14
5	A	602	HAS	C17-C18-C19-C20
8	A	606	OLC	C7-C8-C9-C10
8	C	101	OLC	C9-C10-C11-C12
8	C	101	OLC	C2-C3-C4-C5
8	B	202	OLC	C7-C8-C9-C10
8	C	101	OLC	C12-C13-C14-C15
8	A	605	OLC	C6-C7-C8-C9
8	A	605	OLC	C9-C10-C11-C12
8	A	613	OLC	C9-C10-C11-C12
4	A	601	HEM	C4B-C3B-CAB-CBB
8	A	608	OLC	C3-C4-C5-C6
8	B	203	OLC	C9-C10-C11-C12
8	A	613	OLC	C10-C11-C12-C13
8	A	612	OLC	C4-C5-C6-C7
5	A	602	HAS	CAA-CBA-CGA-O1A
4	A	601	HEM	CAD-CBD-CGD-O1D
8	A	606	OLC	C3-C4-C5-C6
8	A	607	OLC	C5-C6-C7-C8
5	A	602	HAS	CAA-CBA-CGA-O2A

Continued on next page...

Continued from previous page...

Mol	Chain	Res	Type	Atoms
5	A	602	HAS	C25-C23-C24-C28
8	B	202	OLC	C13-C14-C15-C16
8	B	202	OLC	C10-C11-C12-C13
8	C	102	OLC	C9-C10-C11-C12
8	A	613	OLC	C3-C4-C5-C6
8	A	615	OLC	C1-C2-C3-C4
8	A	612	OLC	O19-C1-C2-C3
8	A	612	OLC	O20-C1-C2-C3
8	A	615	OLC	C7-C8-C9-C10
8	C	102	OLC	C7-C8-C9-C10
8	A	609	OLC	O20-C1-C2-C3
8	B	204	OLC	C6-C7-C8-C9
4	A	601	HEM	CAD-CBD-CGD-O2D
8	A	610	OLC	C22-C21-O20-C1
8	A	611	OLC	O23-C22-C24-O25
8	A	607	OLC	C7-C8-C9-C10
5	A	602	HAS	C22-C23-C24-C28
8	A	611	OLC	C1-C2-C3-C4
4	A	601	HEM	CAA-CBA-CGA-O2A
8	A	609	OLC	O19-C1-C2-C3
8	A	607	OLC	C14-C15-C16-C17

There are no ring outliers.

17 monomers are involved in 50 short contacts:

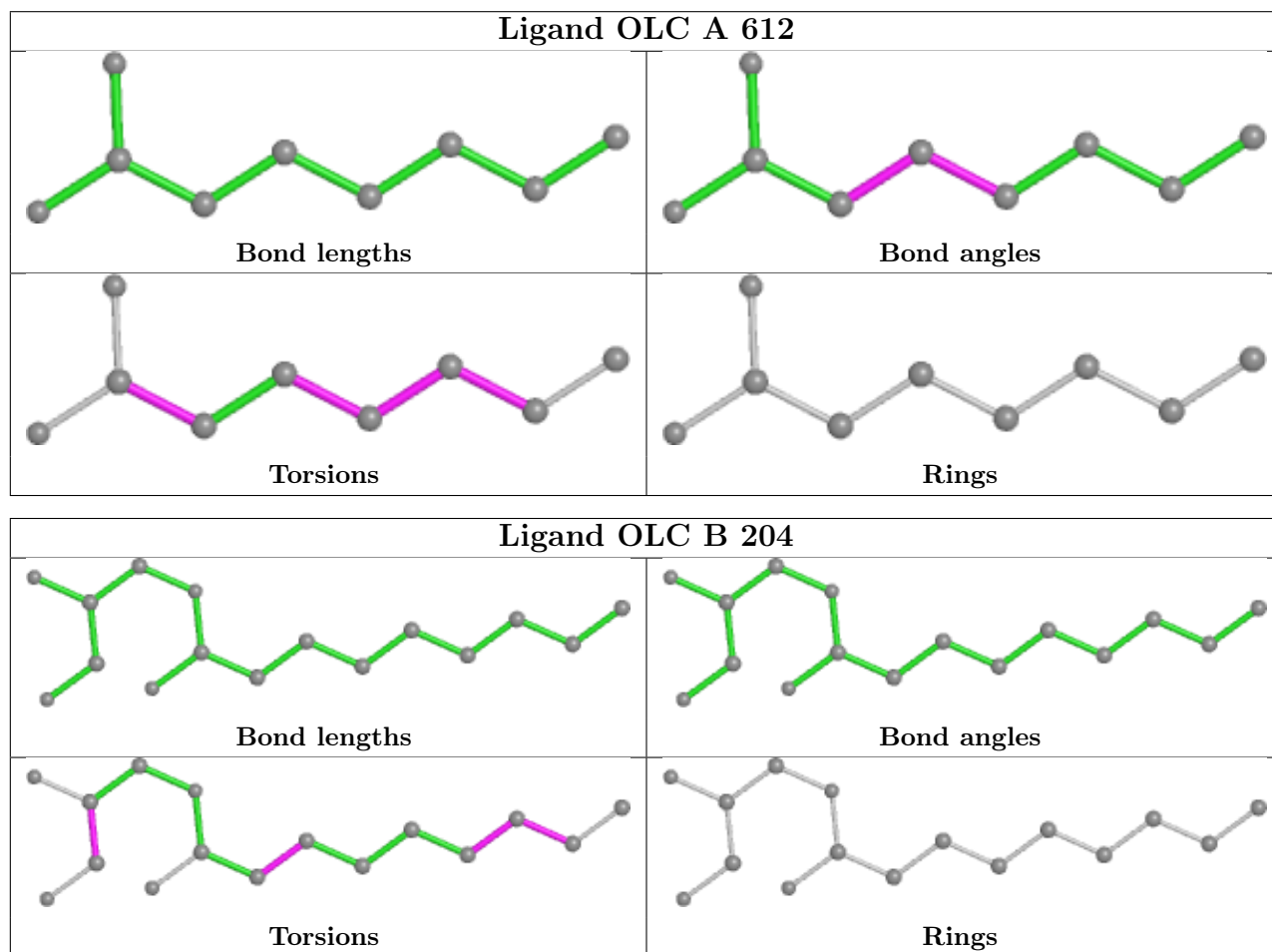
Mol	Chain	Res	Type	Clashes	Symm-Clashes
8	A	612	OLC	2	0
8	B	204	OLC	1	0
8	C	101	OLC	4	0
8	B	202	OLC	1	0
8	A	611	OLC	3	0
8	A	615	OLC	3	0
8	A	607	OLC	7	0
8	A	613	OLC	6	0
8	A	605	OLC	1	0
4	A	601	HEM	5	0
8	A	610	OLC	3	0
8	A	606	OLC	2	0
7	A	604	PER	1	0
8	C	102	OLC	5	0
8	A	608	OLC	1	0
8	B	203	OLC	8	0

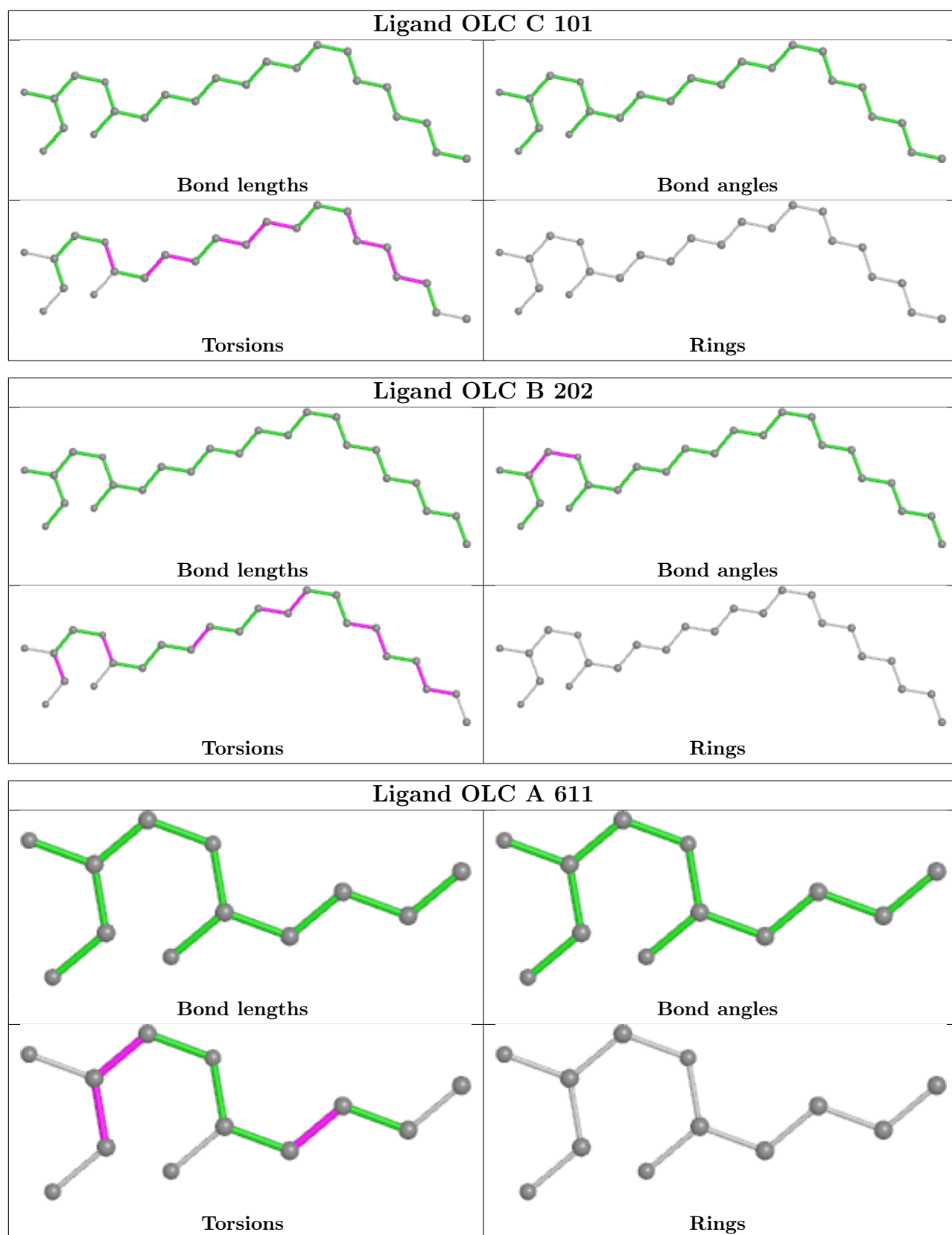
Continued on next page...

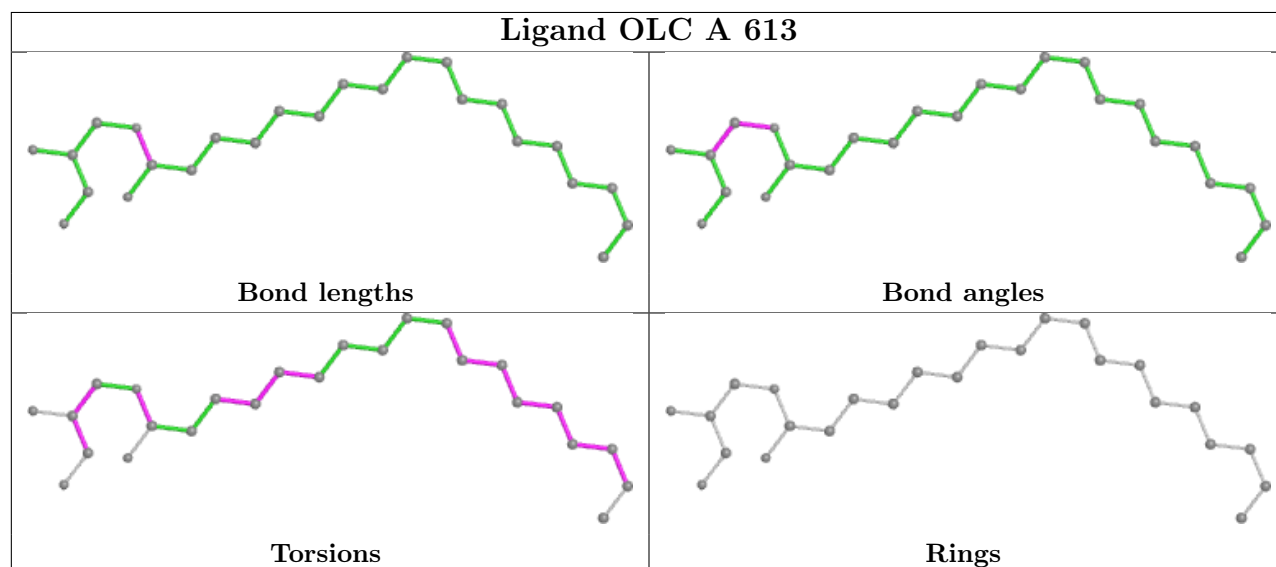
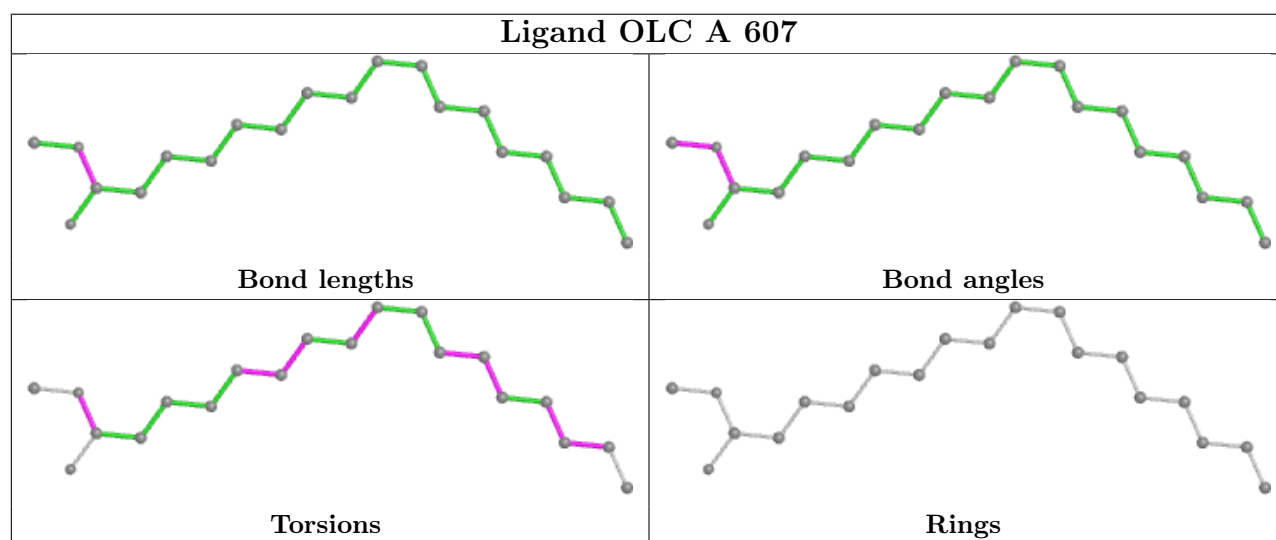
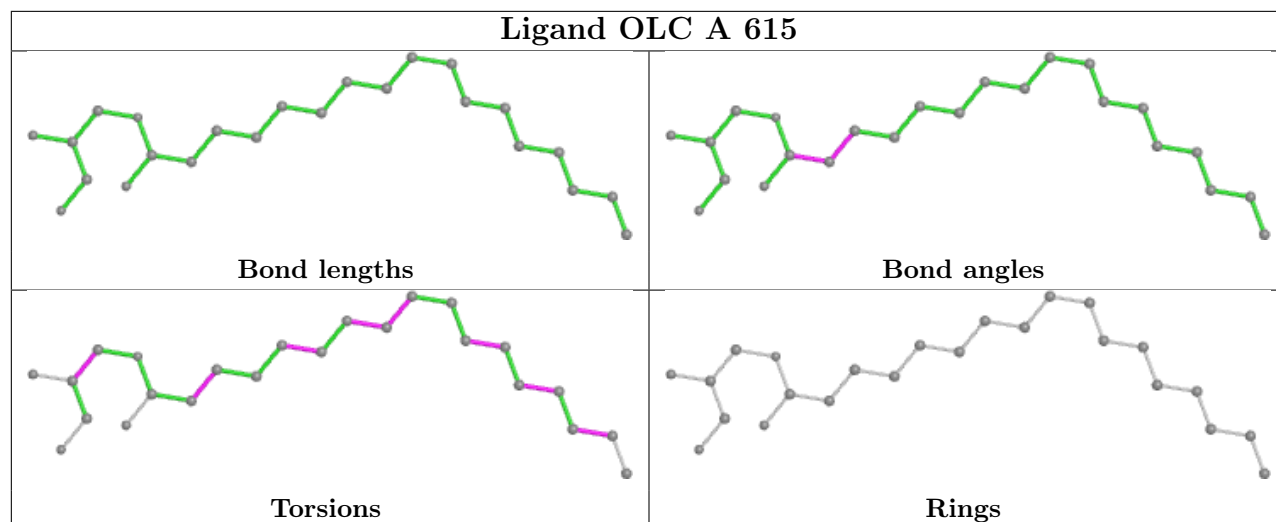
Continued from previous page...

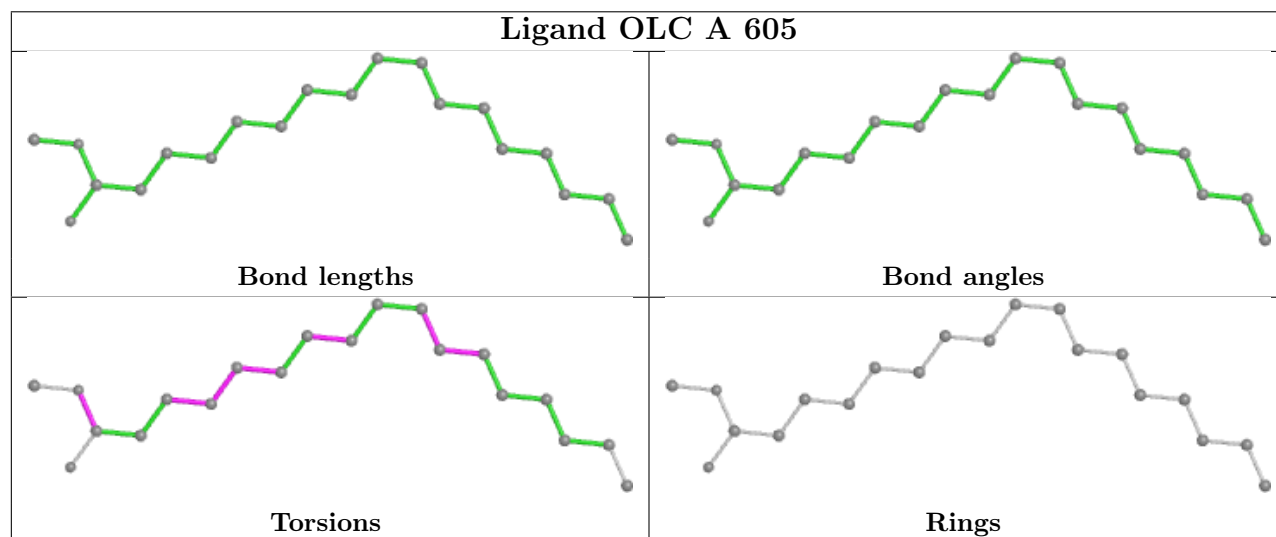
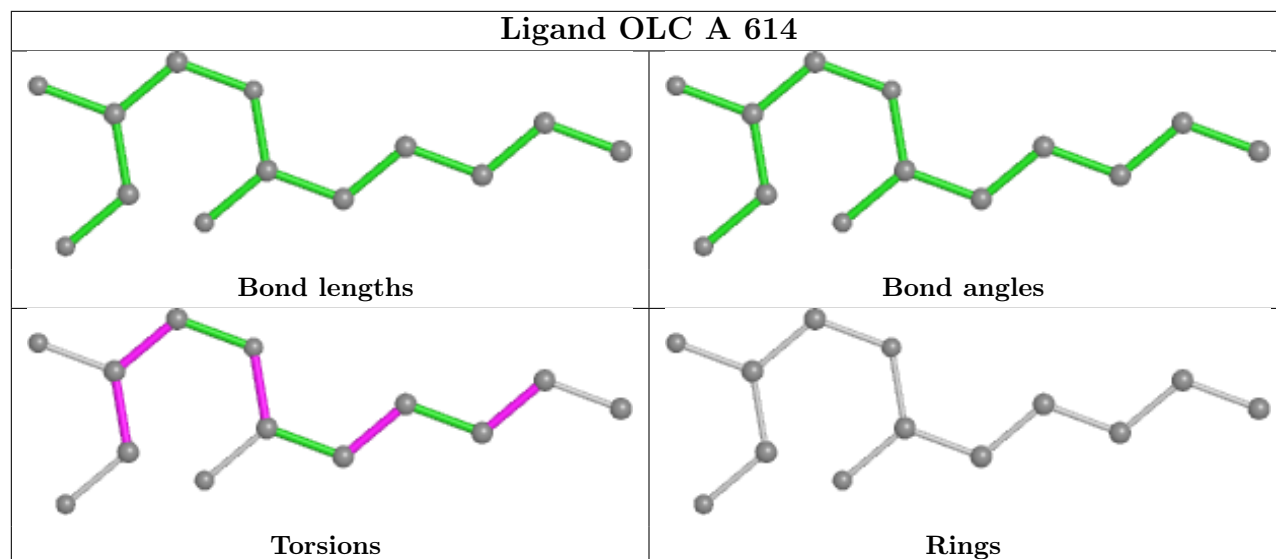
Mol	Chain	Res	Type	Clashes	Symm-Clashes
5	A	602	HAS	3	0

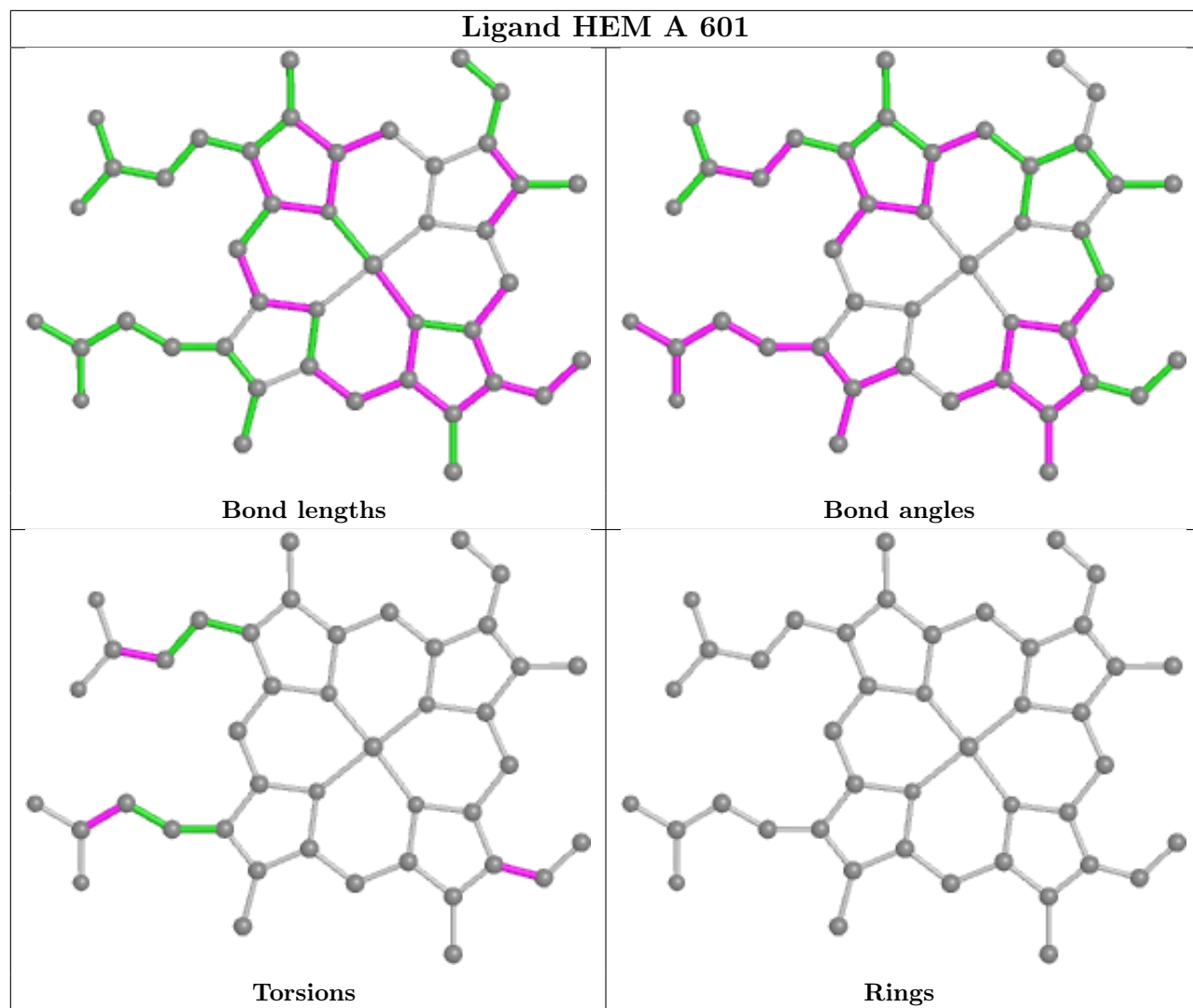
The following is a two-dimensional graphical depiction of Mogul quality analysis of bond lengths, bond angles, torsion angles, and ring geometry for all instances of the Ligand of Interest. In addition, ligands with molecular weight > 250 and outliers as shown on the validation Tables will also be included. For torsion angles, if less than 5% of the Mogul distribution of torsion angles is within 10 degrees of the torsion angle in question, then that torsion angle is considered an outlier. Any bond that is central to one or more torsion angles identified as an outlier by Mogul will be highlighted in the graph. For rings, the root-mean-square deviation (RMSD) between the ring in question and similar rings identified by Mogul is calculated over all ring torsion angles. If the average RMSD is greater than 60 degrees and the minimal RMSD between the ring in question and any Mogul-identified rings is also greater than 60 degrees, then that ring is considered an outlier. The outliers are highlighted in purple. The color gray indicates Mogul did not find sufficient equivalents in the CSD to analyse the geometry.

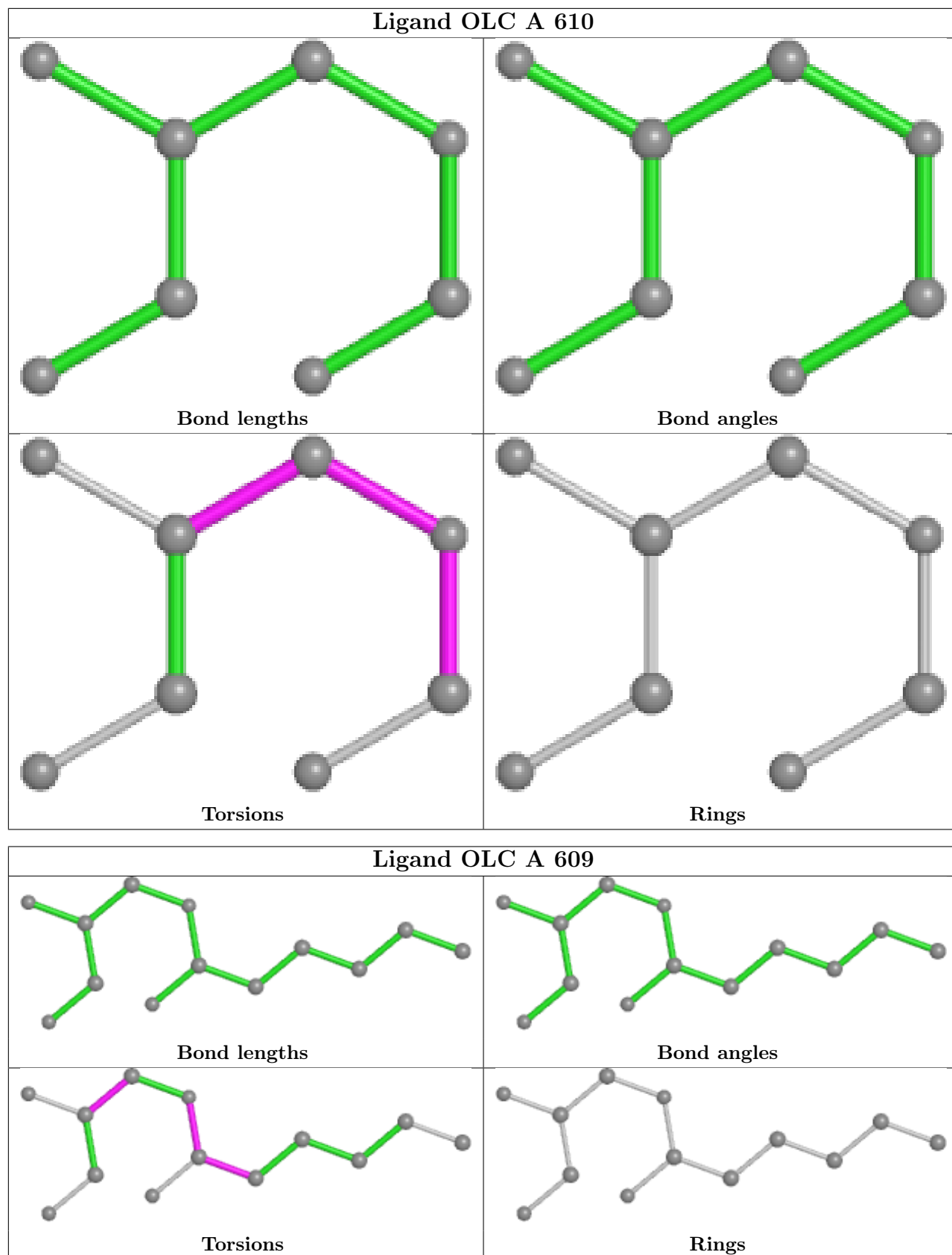


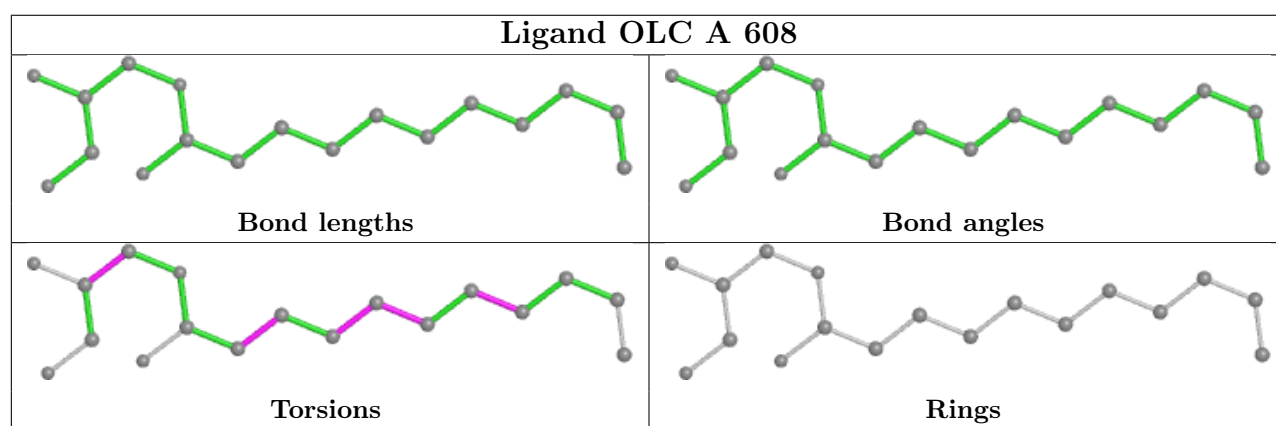
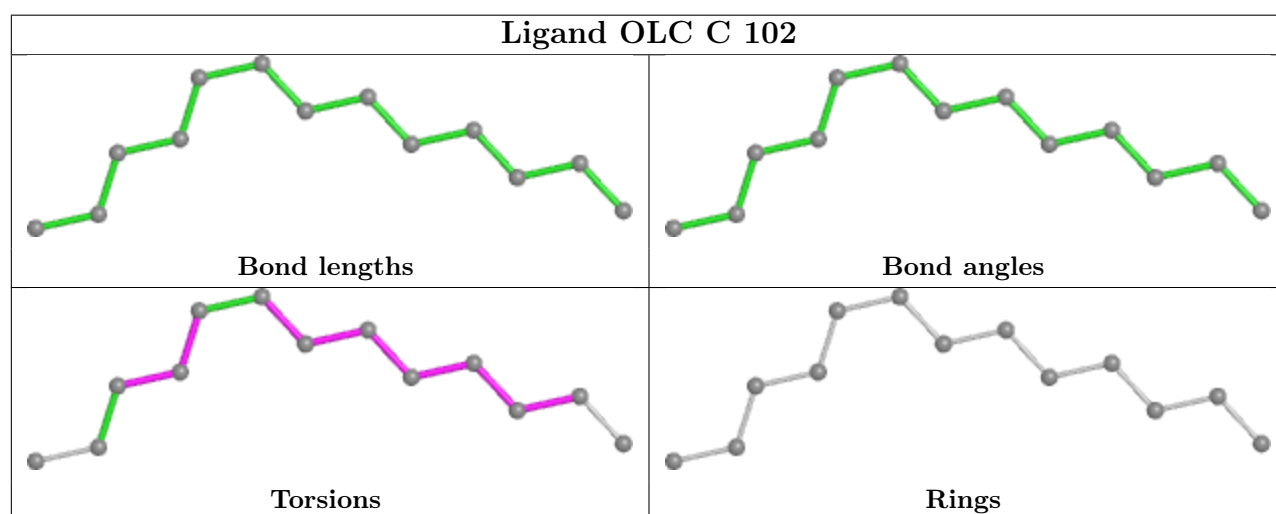
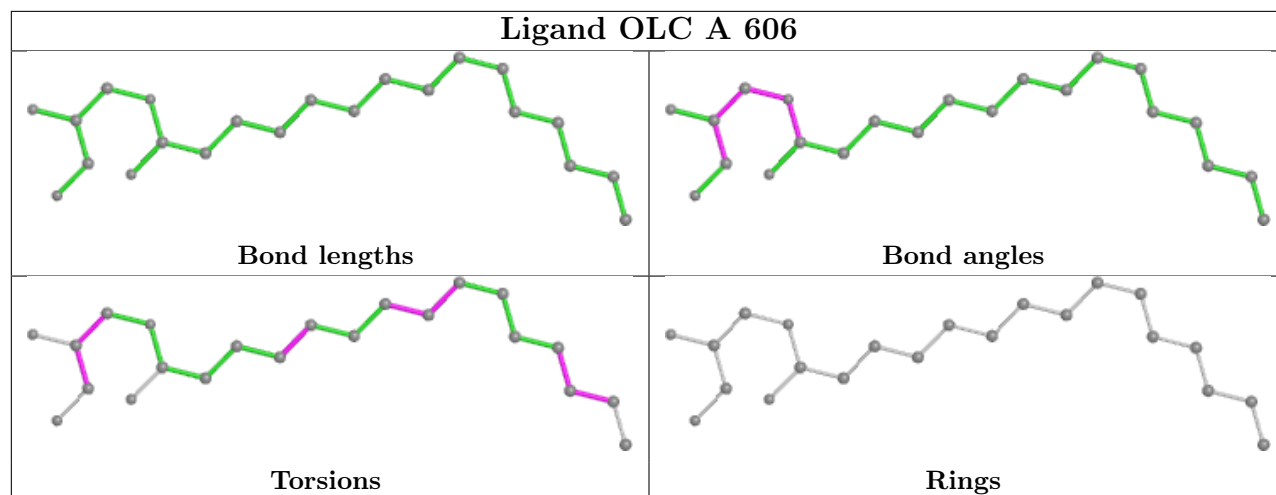


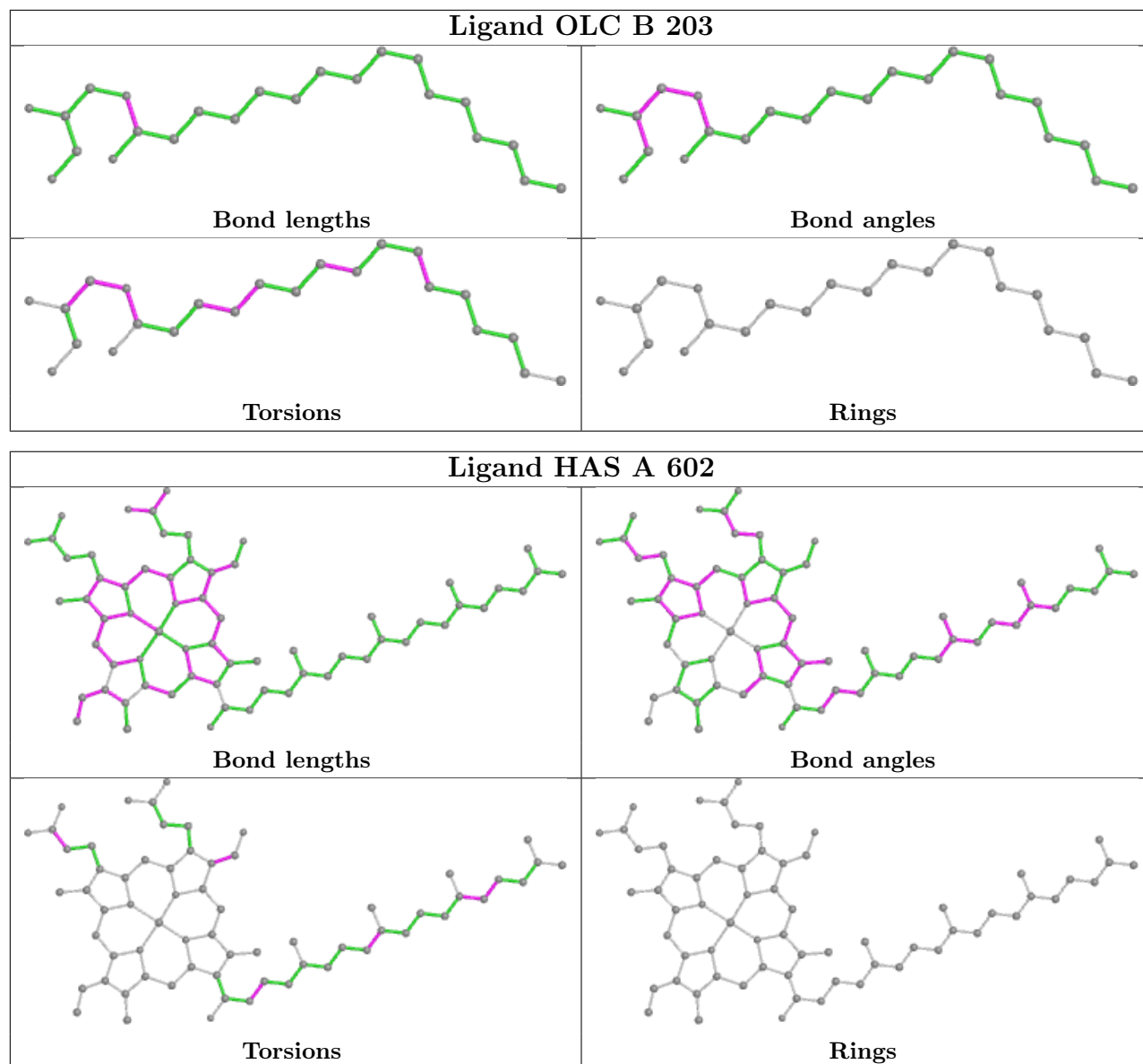












5.7 Other polymers [i](#)

There are no such residues in this entry.

5.8 Polymer linkage issues [i](#)

There are no chain breaks in this entry.

6 Fit of model and data [i](#)

6.1 Protein, DNA and RNA chains [i](#)

In the following table, the column labelled ‘#RSRZ > 2’ contains the number (and percentage) of RSRZ outliers, followed by percent RSRZ outliers for the chain as percentile scores relative to all X-ray entries and entries of similar resolution. The OWAB column contains the minimum, median, 95th percentile and maximum values of the occupancy-weighted average B-factor per residue. The column labelled ‘Q < 0.9’ lists the number of (and percentage) of residues with an average occupancy less than 0.9.

Mol	Chain	Analysed	<RSRZ>	#RSRZ>2	OWAB(Å ²)	Q<0.9
1	A	554/569 (97%)	-0.03	10 (1%) 68 64	19, 30, 61, 95	1 (0%)
2	B	166/168 (98%)	-0.16	0 100 100	21, 31, 50, 70	0
3	C	31/34 (91%)	-0.42	0 100 100	24, 30, 42, 55	0
All	All	751/771 (97%)	-0.08	10 (1%) 77 73	19, 30, 57, 95	1 (0%)

All (10) RSRZ outliers are listed below:

Mol	Chain	Res	Type	RSRZ
1	A	501	LEU	3.5
1	A	513	SER	3.4
1	A	495	ARG	3.2
1	A	494	SER	2.9
1	A	499	PRO	2.7
1	A	516	GLU	2.4
1	A	322	PHE	2.3
1	A	491	VAL	2.3
1	A	492	LEU	2.2
1	A	10	ARG	2.1

6.2 Non-standard residues in protein, DNA, RNA chains [i](#)

There are no non-standard protein/DNA/RNA residues in this entry.

6.3 Carbohydrates [i](#)

There are no monosaccharides in this entry.

6.4 Ligands

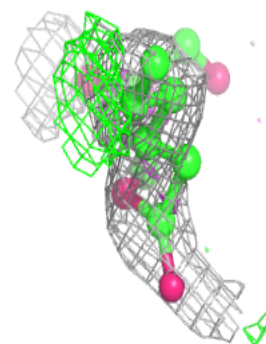
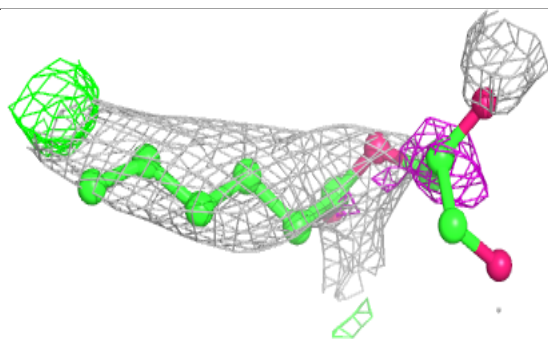
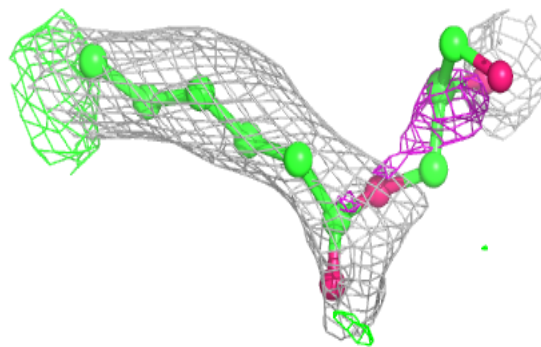
In the following table, the Atoms column lists the number of modelled atoms in the group and the number defined in the chemical component dictionary. The B-factors column lists the minimum, median, 95th percentile and maximum values of B factors of atoms in the group. The column labelled 'Q< 0.9' lists the number of atoms with occupancy less than 0.9.

Mol	Type	Chain	Res	Atoms	RSCC	RSR	B-factors(Å ²)	Q<0.9
8	OLC	A	609	13/25	0.42	0.46	59,65,77,78	0
8	OLC	A	611	12/25	0.45	0.56	48,73,75,75	0
8	OLC	B	203	23/25	0.57	0.35	57,63,72,76	0
8	OLC	A	615	24/25	0.58	0.45	52,59,67,69	0
8	OLC	A	614	13/25	0.59	0.54	62,75,81,81	0
8	OLC	A	612	9/25	0.63	0.39	53,55,62,64	0
8	OLC	A	608	18/25	0.67	0.36	47,60,72,72	0
8	OLC	B	202	24/25	0.69	0.28	53,66,71,73	0
8	OLC	A	607	20/25	0.69	0.38	57,62,75,77	0
8	OLC	B	204	16/25	0.71	0.27	65,66,70,72	0
8	OLC	A	613	25/25	0.73	0.39	48,59,64,67	0
8	OLC	A	605	20/25	0.74	0.38	45,65,84,87	0
8	OLC	C	101	23/25	0.77	0.37	46,56,71,74	0
8	OLC	A	610	8/25	0.80	0.31	67,68,70,70	0
8	OLC	C	102	13/25	0.81	0.23	63,70,79,81	0
8	OLC	A	606	22/25	0.84	0.27	30,45,62,64	0
5	HAS	A	602	65/65	0.94	0.22	19,25,42,47	0
4	HEM	A	601	43/43	0.97	0.17	18,21,23,26	0
7	PER	A	604	2/2	0.98	0.25	27,27,27,29	0
6	CU	A	603	1/1	1.00	0.14	27,27,27,27	0
9	CUA	B	201	2/2	1.00	0.15	24,24,24,26	0

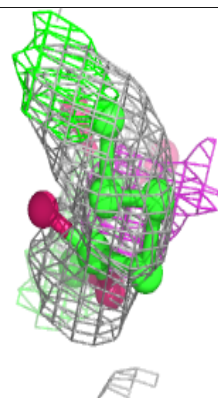
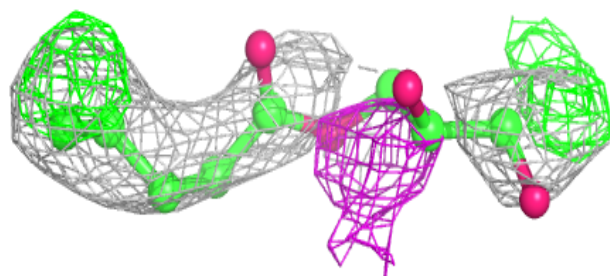
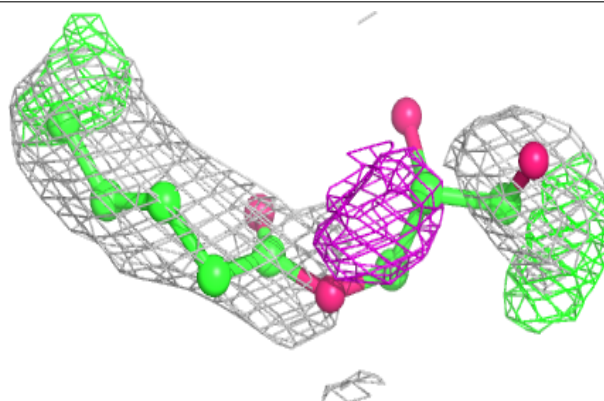
The following is a graphical depiction of the model fit to experimental electron density of all instances of the Ligand of Interest. In addition, ligands with molecular weight > 250 and outliers as shown on the geometry validation Tables will also be included. Each fit is shown from different orientation to approximate a three-dimensional view.

Electron density around OLC A 609:

$2mF_o-DF_c$ (at 0.7 rmsd) in gray
 mF_o-DF_c (at 3 rmsd) in purple (negative)
and green (positive)

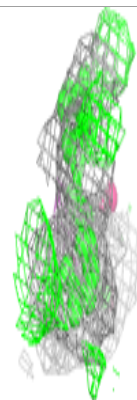
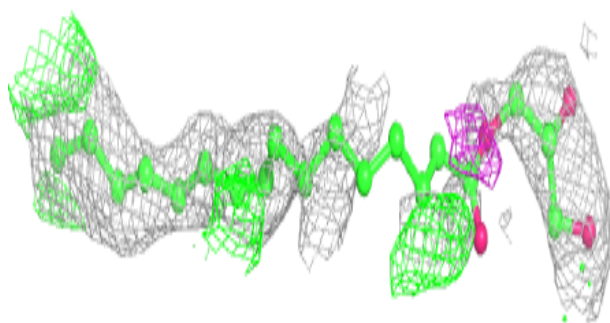
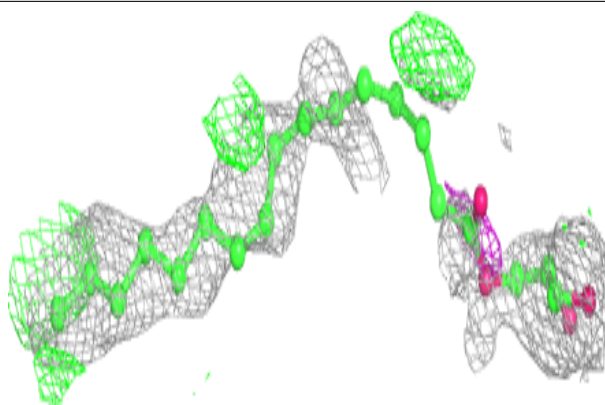
**Electron density around OLC A 611:**

$2mF_o-DF_c$ (at 0.7 rmsd) in gray
 mF_o-DF_c (at 3 rmsd) in purple (negative)
and green (positive)

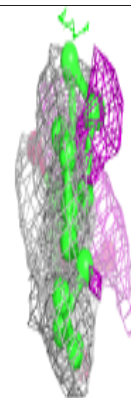
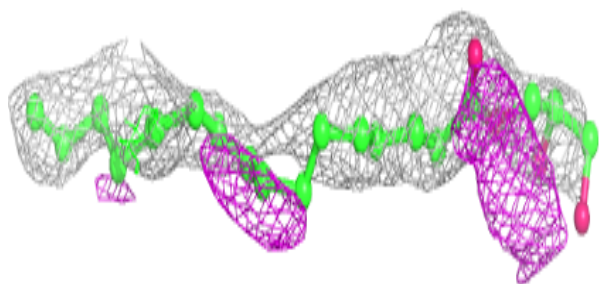
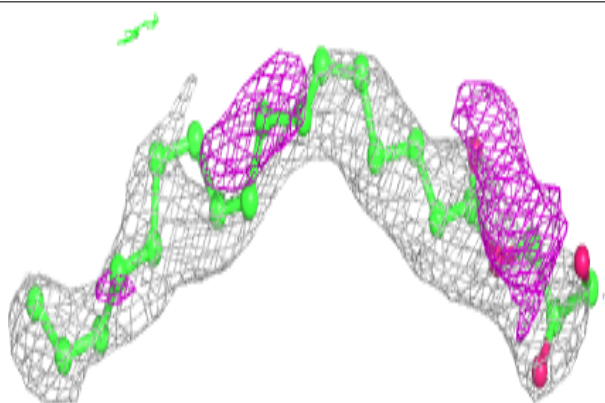


Electron density around OLC B 203:

$2mF_o-DF_c$ (at 0.7 rmsd) in gray
 mF_o-DF_c (at 3 rmsd) in purple (negative)
and green (positive)

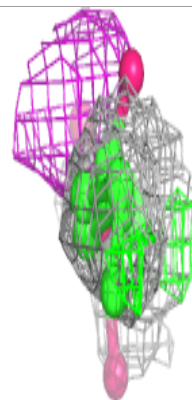
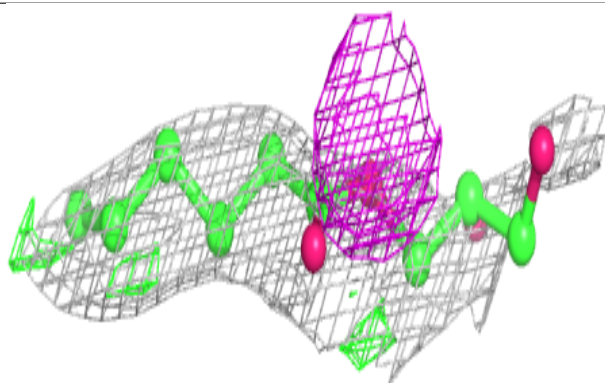
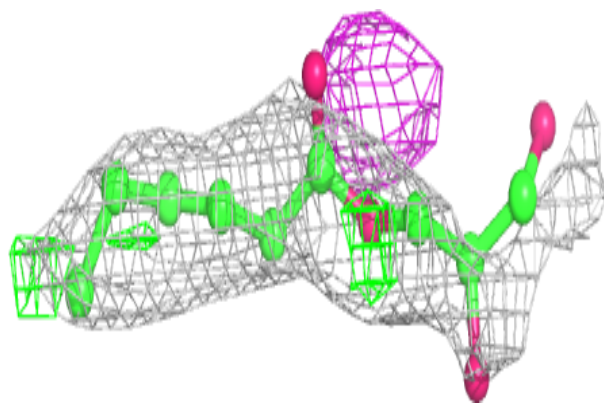
**Electron density around OLC A 615:**

$2mF_o-DF_c$ (at 0.7 rmsd) in gray
 mF_o-DF_c (at 3 rmsd) in purple (negative)
and green (positive)

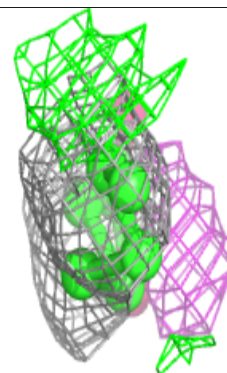
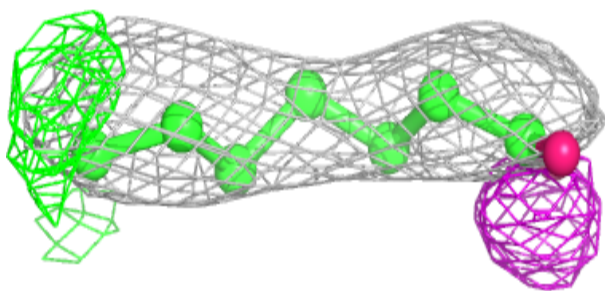
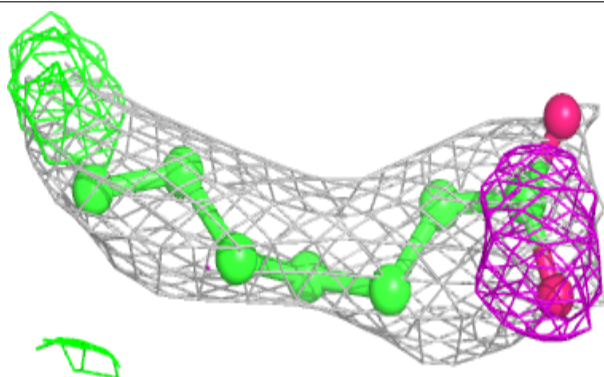


Electron density around OLC A 614:

$2mF_o-DF_c$ (at 0.7 rmsd) in gray
 mF_o-DF_c (at 3 rmsd) in purple (negative)
and green (positive)

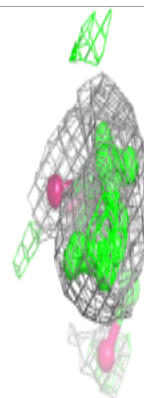
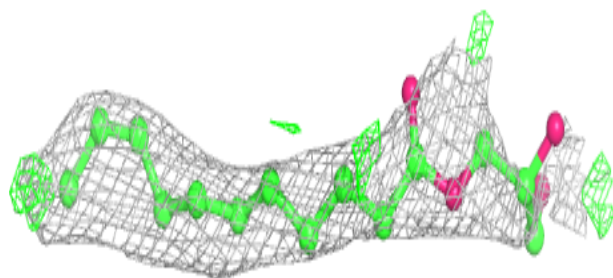
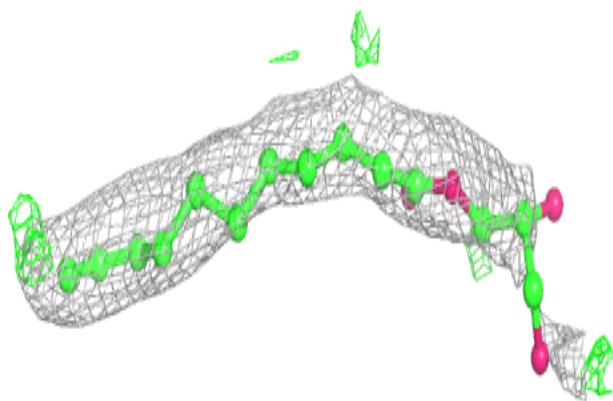
**Electron density around OLC A 612:**

$2mF_o-DF_c$ (at 0.7 rmsd) in gray
 mF_o-DF_c (at 3 rmsd) in purple (negative)
and green (positive)

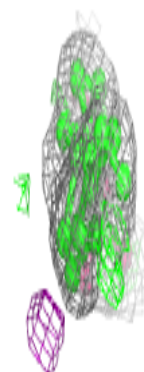
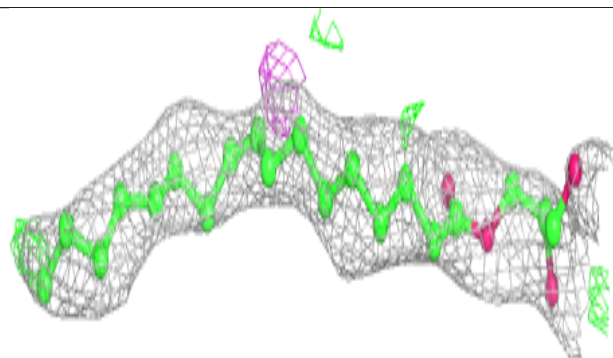
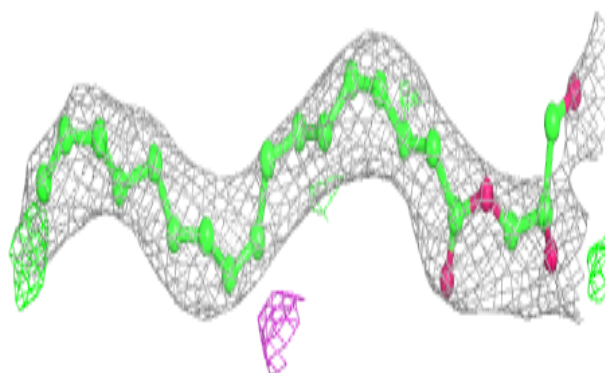


Electron density around OLC A 608:

$2mF_o-DF_c$ (at 0.7 rmsd) in gray
 mF_o-DF_c (at 3 rmsd) in purple (negative)
and green (positive)

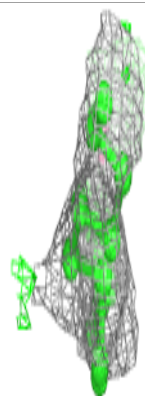
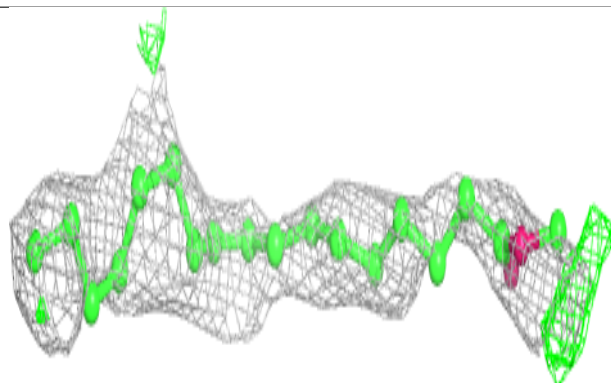
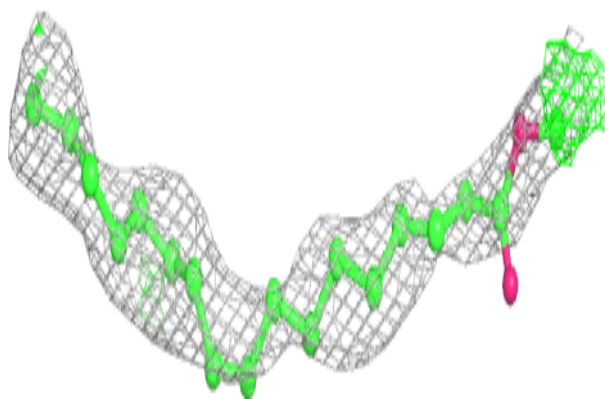
**Electron density around OLC B 202:**

$2mF_o-DF_c$ (at 0.7 rmsd) in gray
 mF_o-DF_c (at 3 rmsd) in purple (negative)
and green (positive)

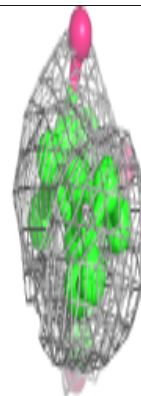
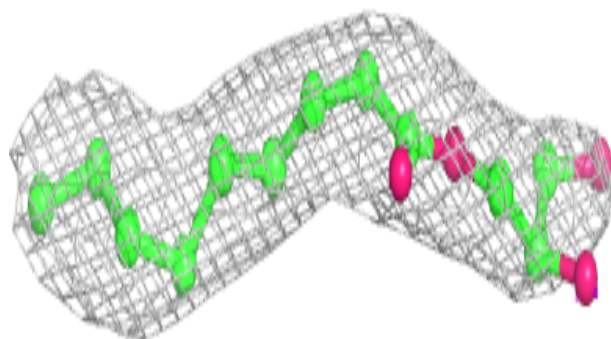
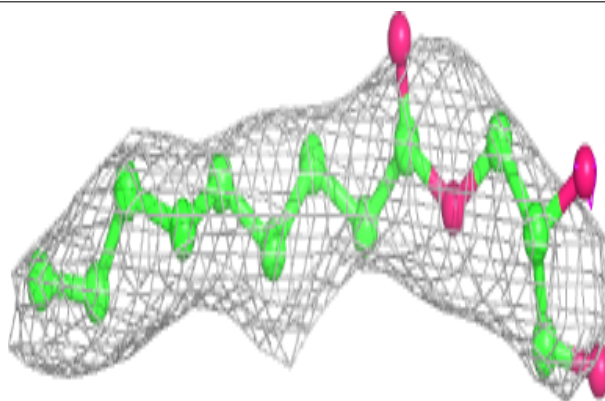


Electron density around OLC A 607:

$2mF_o-DF_c$ (at 0.7 rmsd) in gray
 mF_o-DF_c (at 3 rmsd) in purple (negative)
and green (positive)

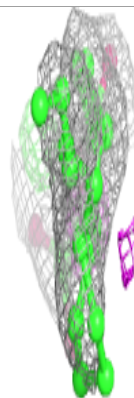
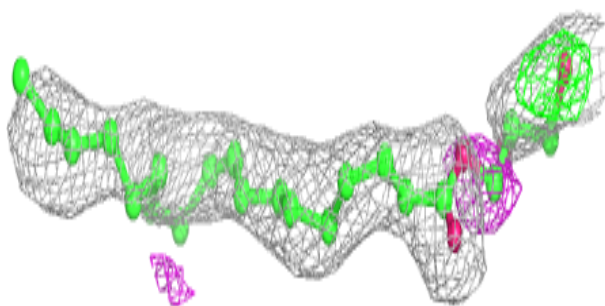
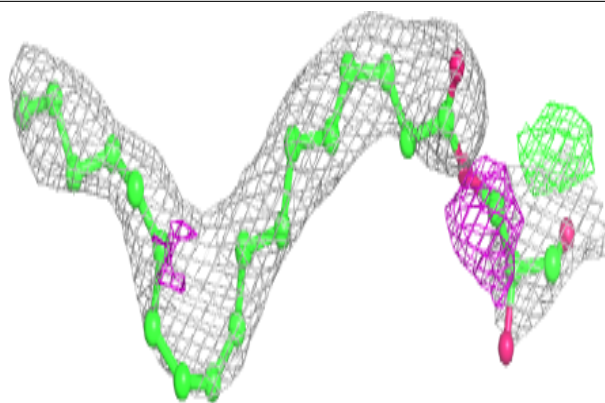
**Electron density around OLC B 204:**

$2mF_o-DF_c$ (at 0.7 rmsd) in gray
 mF_o-DF_c (at 3 rmsd) in purple (negative)
and green (positive)

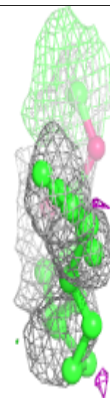
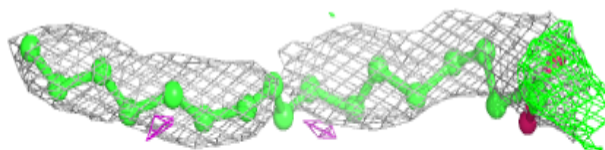
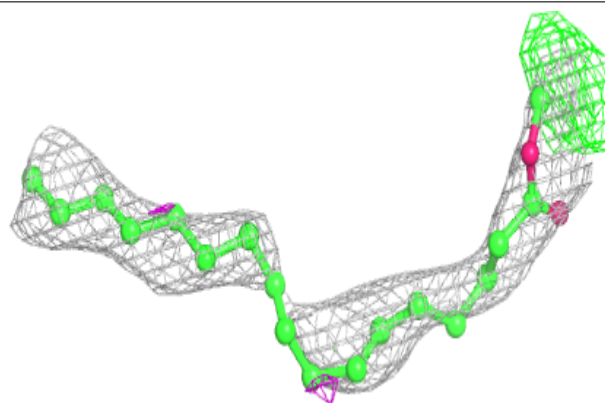


Electron density around OLC A 613:

$2mF_o-DF_c$ (at 0.7 rmsd) in gray
 mF_o-DF_c (at 3 rmsd) in purple (negative)
and green (positive)

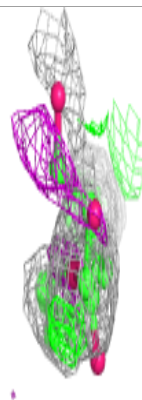
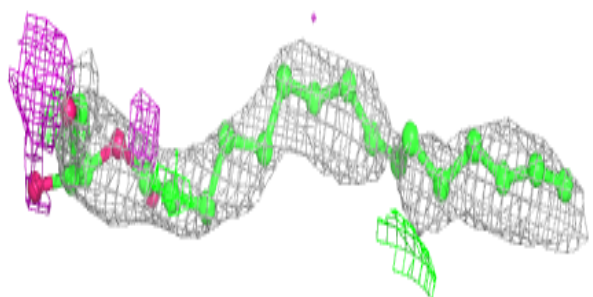
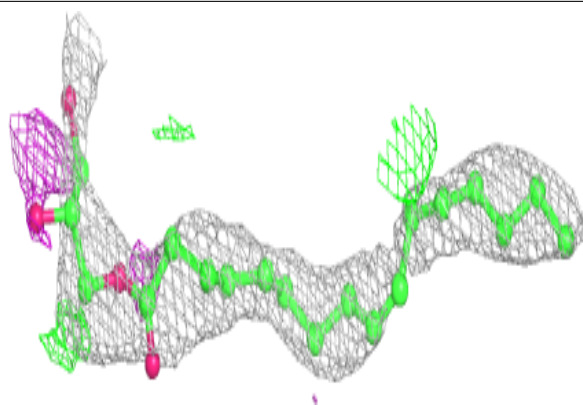
**Electron density around OLC A 605:**

$2mF_o-DF_c$ (at 0.7 rmsd) in gray
 mF_o-DF_c (at 3 rmsd) in purple (negative)
and green (positive)

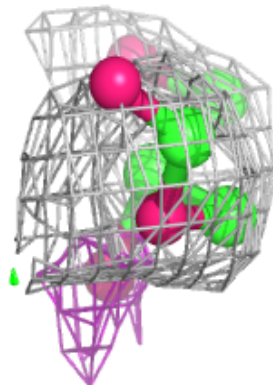
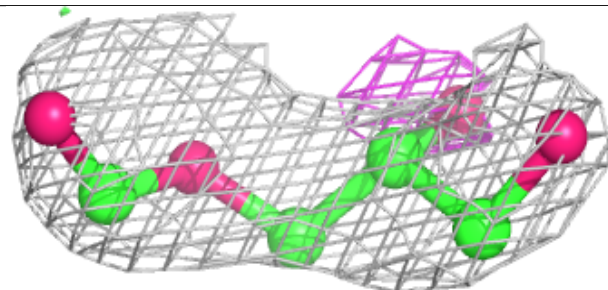
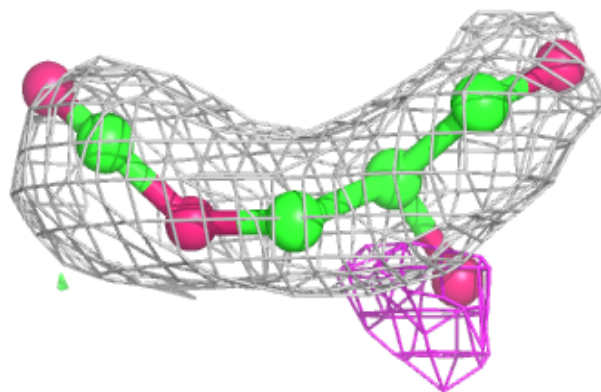


Electron density around OLC C 101:

$2mF_o-DF_c$ (at 0.7 rmsd) in gray
 mF_o-DF_c (at 3 rmsd) in purple (negative)
and green (positive)

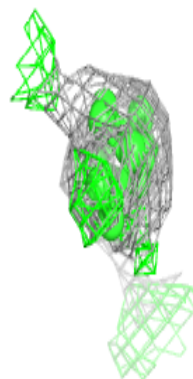
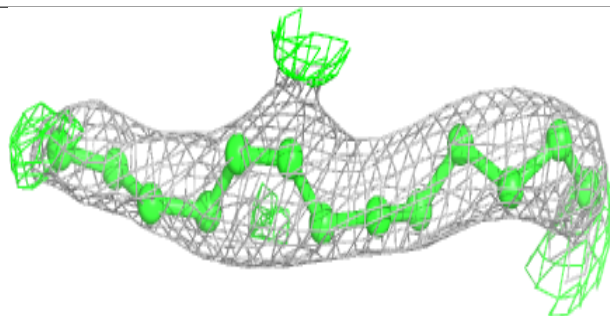
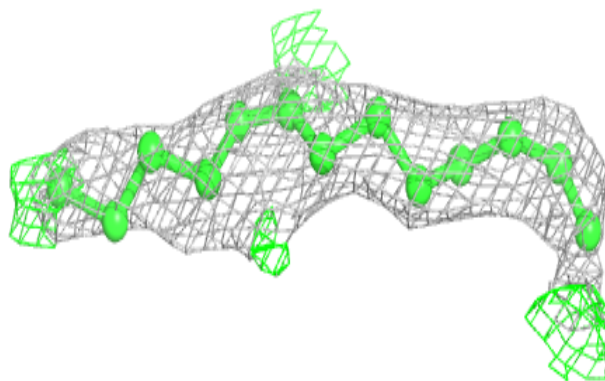
**Electron density around OLC A 610:**

$2mF_o-DF_c$ (at 0.7 rmsd) in gray
 mF_o-DF_c (at 3 rmsd) in purple (negative)
and green (positive)

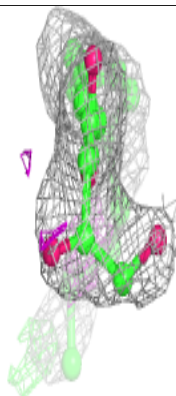
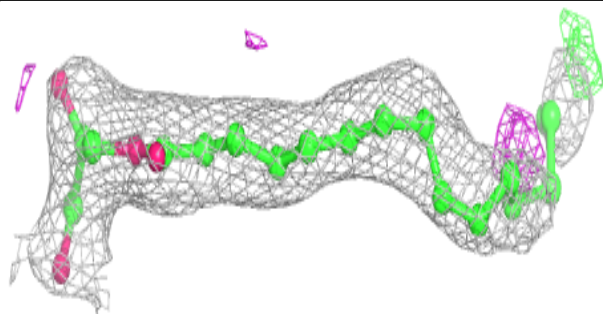
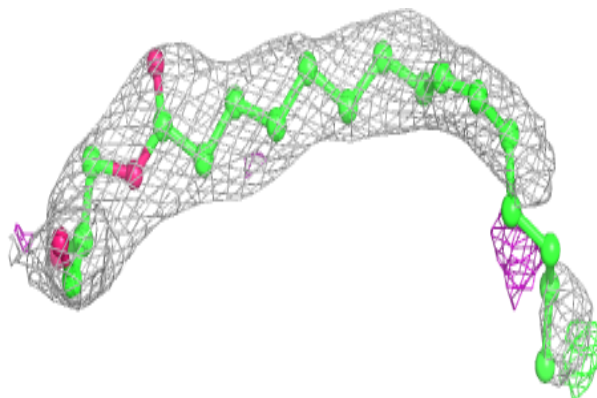


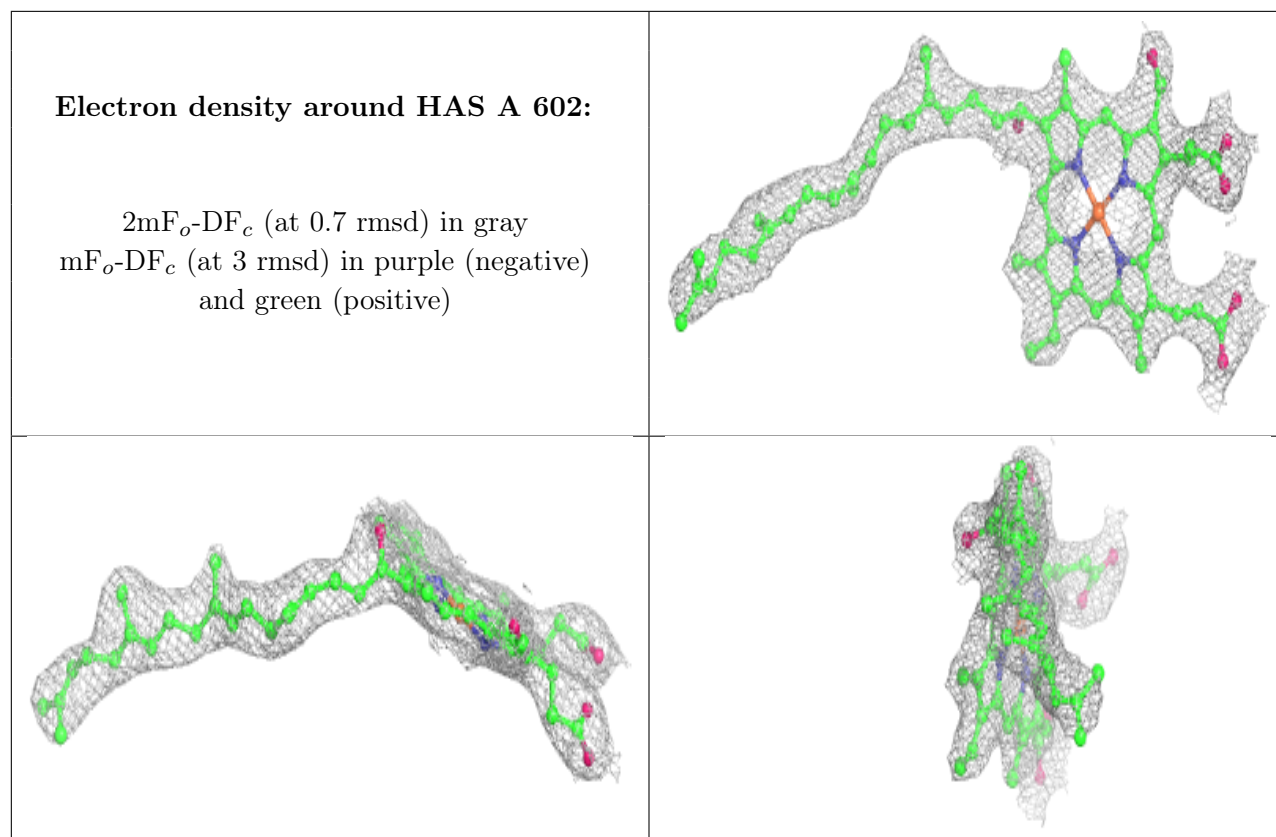
Electron density around OLC C 102:

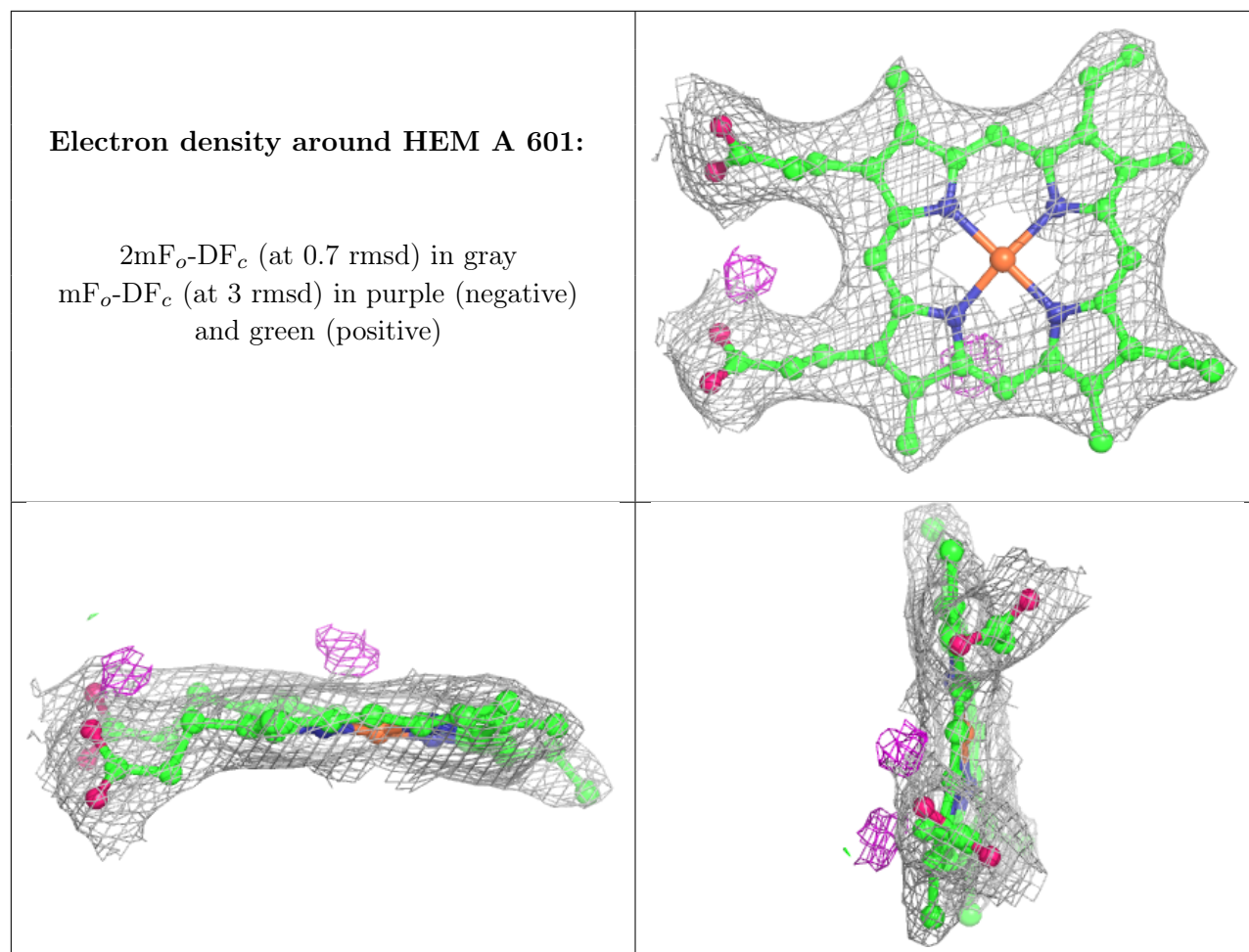
$2mF_o-DF_c$ (at 0.7 rmsd) in gray
 mF_o-DF_c (at 3 rmsd) in purple (negative)
and green (positive)

**Electron density around OLC A 606:**

$2mF_o-DF_c$ (at 0.7 rmsd) in gray
 mF_o-DF_c (at 3 rmsd) in purple (negative)
and green (positive)







6.5 Other polymers [i](#)

There are no such residues in this entry.