



Full wwPDB EM Validation Report ⓘ

Dec 31, 2023 – 06:17 AM EST

PDB ID : 8G5J
EMDB ID : EMD-29746
Title : Cryo-EM structure of the Mismatch Uncoupling Complex (II) of Human Mitochondrial DNA Polymerase Gamma
Authors : Nayak, A.R.; Buchel, G.; Herbine, K.H.; Sarfallah, A.; Sokolova, V.O.; Zamudio-Ochoa, A.; Temiakov, D.
Deposited on : 2023-02-13
Resolution : 2.63 Å(reported)

This is a Full wwPDB EM Validation Report for a publicly released PDB entry.

We welcome your comments at validation@mail.wwpdb.org

A user guide is available at

<https://www.wwpdb.org/validation/2017/EMValidationReportHelp>

with specific help available everywhere you see the ⓘ symbol.

The types of validation reports are described at

<http://www.wwpdb.org/validation/2017/FAQs#types>.

The following versions of software and data (see [references ⓘ](#)) were used in the production of this report:

EMDB validation analysis : 0.0.1.dev70
MolProbity : 4.02b-467
Percentile statistics : 20191225.v01 (using entries in the PDB archive December 25th 2019)
MapQ : 1.9.9
Ideal geometry (proteins) : Engh & Huber (2001)
Ideal geometry (DNA, RNA) : Parkinson et al. (1996)
Validation Pipeline (wwPDB-VP) : 2.36

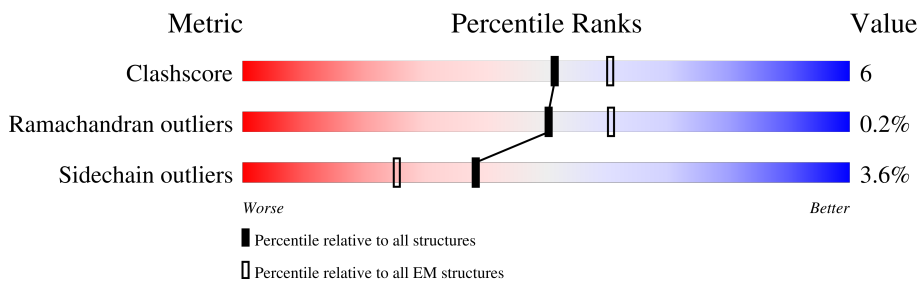
1 Overall quality at a glance

The following experimental techniques were used to determine the structure:

ELECTRON MICROSCOPY

The reported resolution of this entry is 2.63 Å.

Percentile scores (ranging between 0-100) for global validation metrics of the entry are shown in the following graphic. The table shows the number of entries on which the scores are based.



Metric	Whole archive (#Entries)	EM structures (#Entries)
Clashscore	158937	4297
Ramachandran outliers	154571	4023
Sidechain outliers	154315	3826

The table below summarises the geometric issues observed across the polymeric chains and their fit to the map. The red, orange, yellow and green segments of the bar indicate the fraction of residues that contain outliers for ≥ 3 , 2, 1 and 0 types of geometric quality criteria respectively. A grey segment represents the fraction of residues that are not modelled. The numeric value for each fraction is indicated below the corresponding segment, with a dot representing fractions $\leq 5\%$. The upper red bar (where present) indicates the fraction of residues that have poor fit to the EM map (all-atom inclusion $< 40\%$). The numeric value is given above the bar.

Mol	Chain	Length	Quality of chain
1	A	1239	
2	B	485	
2	C	485	
3	P	20	
4	T	26	

2 Entry composition [i](#)

There are 4 unique types of molecules in this entry. The entry contains 14544 atoms, of which 0 are hydrogens and 0 are deuteriums.

In the tables below, the AltConf column contains the number of residues with at least one atom in alternate conformation and the Trace column contains the number of residues modelled with at most 2 atoms.

- Molecule 1 is a protein called DNA polymerase subunit gamma-1.

Mol	Chain	Residues	Atoms					AltConf	Trace
			Total	C	N	O	S		
1	A	941	7369	4678	1288	1355	48	0	0

- Molecule 2 is a protein called DNA polymerase subunit gamma-2, mitochondrial.

Mol	Chain	Residues	Atoms					AltConf	Trace
			Total	C	N	O	S		
2	B	398	3188	2039	563	570	16	0	0
2	C	400	3168	2027	555	570	16	0	0

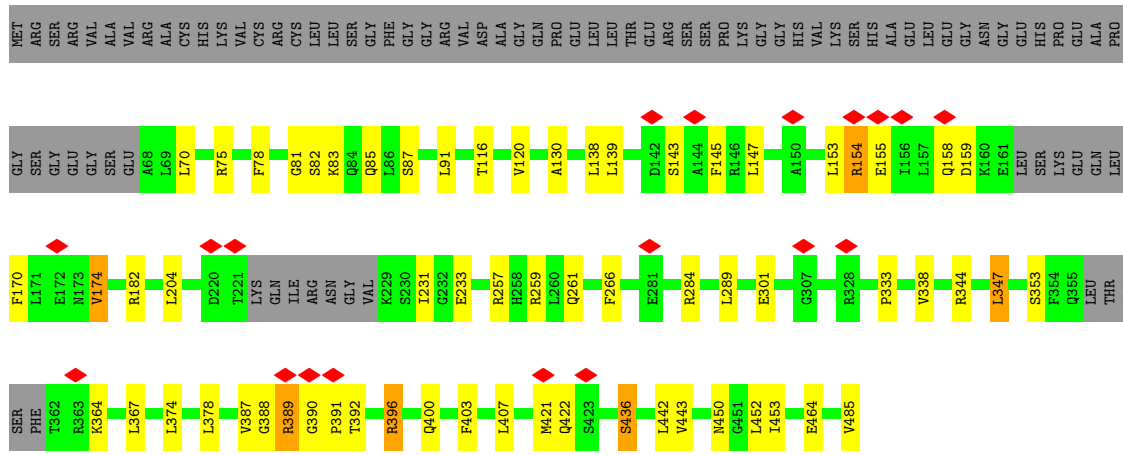
- Molecule 3 is a DNA chain called Mismatched Primer DNA.

Mol	Chain	Residues	Atoms					AltConf	Trace
			Total	C	N	O	P		
3	P	19	413	195	84	114	20	1	0

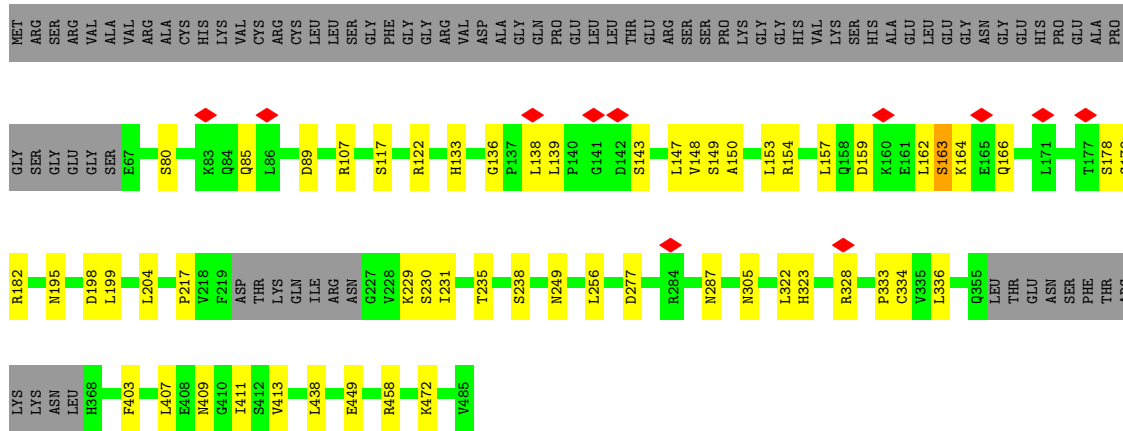
- Molecule 4 is a DNA chain called Template DNA.

Mol	Chain	Residues	Atoms					AltConf	Trace
			Total	C	N	O	P		
4	T	20	406	192	72	122	20	0	0

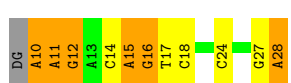
• Molecule 2: DNA polymerase subunit gamma-2, mitochondrial



• Molecule 2: DNA polymerase subunit gamma-2, mitochondrial



• Molecule 3: Mismatched Primer DNA



• Molecule 4: Template DNA



4 Experimental information

Property	Value	Source
EM reconstruction method	SINGLE PARTICLE	Depositor
Imposed symmetry	POINT, C1	Depositor
Number of particles used	1372651	Depositor
Resolution determination method	FSC 0.143 CUT-OFF	Depositor
CTF correction method	PHASE FLIPPING AND AMPLITUDE CORRECTION	Depositor
Microscope	FEI TITAN KRIOS	Depositor
Voltage (kV)	300	Depositor
Electron dose ($e^-/\text{\AA}^2$)	70	Depositor
Minimum defocus (nm)	500	Depositor
Maximum defocus (nm)	18000	Depositor
Magnification	105000	Depositor
Image detector	GATAN K3 (6k x 4k)	Depositor
Maximum map value	1.145	Depositor
Minimum map value	-0.667	Depositor
Average map value	-0.000	Depositor
Map value standard deviation	0.026	Depositor
Recommended contour level	0.08	Depositor
Map size (Å)	264.32, 264.32, 264.32	wwPDB
Map dimensions	320, 320, 320	wwPDB
Map angles (°)	90.0, 90.0, 90.0	wwPDB
Pixel spacing (Å)	0.82600003, 0.82600003, 0.82600003	Depositor

5 Model quality i

5.1 Standard geometry i

The Z score for a bond length (or angle) is the number of standard deviations the observed value is removed from the expected value. A bond length (or angle) with $|Z| > 5$ is considered an outlier worth inspection. RMSZ is the root-mean-square of all Z scores of the bond lengths (or angles).

Mol	Chain	Bond lengths		Bond angles	
		RMSZ	# $ Z > 5$	RMSZ	# $ Z > 5$
1	A	0.29	0/7552	0.61	3/10255 (0.0%)
2	B	0.33	0/3264	0.60	0/4414
2	C	0.30	0/3244	0.58	1/4392 (0.0%)
3	P	1.01	4/466 (0.9%)	1.31	7/715 (1.0%)
4	T	1.09	4/453 (0.9%)	1.93	18/696 (2.6%)
All	All	0.39	8/14979 (0.1%)	0.72	29/20472 (0.1%)

Chiral center outliers are detected by calculating the chiral volume of a chiral center and verifying if the center is modelled as a planar moiety or with the opposite hand. A planarity outlier is detected by checking planarity of atoms in a peptide group, atoms in a mainchain group or atoms of a sidechain that are expected to be planar.

Mol	Chain	#Chirality outliers	#Planarity outliers
1	A	0	2
2	B	0	6
All	All	0	8

All (8) bond length outliers are listed below:

Mol	Chain	Res	Type	Atoms	Z	Observed(Å)	Ideal(Å)
4	T	3	DG	C2'-C1'	-8.02	1.44	1.52
4	T	4	DC	P-OP2	7.99	1.62	1.49
3	P	28[A]	DA	P-OP2	7.42	1.61	1.49
3	P	28[B]	DA	P-OP2	7.42	1.61	1.49
3	P	15	DA	C1'-N9	-6.21	1.38	1.47
3	P	16	DG	C1'-N9	-6.15	1.38	1.47
4	T	4	DC	P-O5'	6.07	1.65	1.59
4	T	13	DG	C1'-N9	-5.79	1.39	1.47

All (29) bond angle outliers are listed below:

Mol	Chain	Res	Type	Atoms	Z	Observed(°)	Ideal(°)
4	T	3	DG	P-O3'-C3'	-22.23	93.02	119.70

Continued on next page...

Continued from previous page...

Mol	Chain	Res	Type	Atoms	Z	Observed(°)	Ideal(°)
4	T	2	DC	P-O3'-C3'	-9.91	107.81	119.70
4	T	4	DC	P-O3'-C3'	-9.18	108.68	119.70
4	T	4	DC	OP1-P-OP2	-9.10	105.94	119.60
4	T	3	DG	C3'-C2'-C1'	8.85	113.12	102.50
4	T	3	DG	O4'-C1'-C2'	-8.79	98.87	105.90
4	T	19	DC	P-O3'-C3'	-8.09	109.99	119.70
4	T	3	DG	OP2-P-O3'	7.74	122.22	105.20
4	T	3	DG	C4'-C3'-C2'	-7.41	96.43	103.10
4	T	18	DT	P-O3'-C3'	-6.82	111.52	119.70
3	P	11	DA	P-O3'-C3'	-6.80	111.54	119.70
4	T	20	DT	P-O3'-C3'	-6.64	111.74	119.70
4	T	3	DG	C4'-C3'-O3'	6.43	125.79	109.70
2	C	198	ASP	CB-CG-OD1	6.43	124.09	118.30
1	A	250	PRO	N-CA-CB	6.32	110.88	103.30
3	P	10	DA	C5-C6-N1	-6.25	114.57	117.70
4	T	2	DC	OP1-P-O3'	5.87	118.11	105.20
1	A	560	PRO	N-CA-CB	5.83	110.30	103.30
3	P	10	DA	P-O3'-C3'	-5.81	112.72	119.70
1	A	581	ASP	CB-CG-OD1	5.63	123.37	118.30
3	P	28[A]	DA	OP1-P-OP2	-5.61	111.19	119.60
3	P	28[B]	DA	OP1-P-OP2	-5.61	111.19	119.60
4	T	3	DG	C8-N9-C1'	5.18	133.74	127.00
3	P	16	DG	OP2-P-O3'	5.11	116.43	105.20
4	T	13	DG	OP2-P-O3'	5.09	116.40	105.20
3	P	12	DG	P-O3'-C3'	-5.09	113.59	119.70
4	T	5	DG	OP2-P-O3'	5.08	116.39	105.20
4	T	4	DC	O5'-P-OP1	-5.07	101.14	105.70
4	T	21	DT	N3-C2-O2	5.03	125.32	122.30

There are no chirality outliers.

All (8) planarity outliers are listed below:

Mol	Chain	Res	Type	Group
1	A	101	ARG	Sidechain
1	A	102	ARG	Sidechain
2	B	154	ARG	Sidechain
2	B	257	ARG	Sidechain
2	B	284	ARG	Sidechain
2	B	344	ARG	Sidechain
2	B	389	ARG	Sidechain
2	B	396	ARG	Sidechain

5.2 Too-close contacts [i](#)

In the following table, the Non-H and H(model) columns list the number of non-hydrogen atoms and hydrogen atoms in the chain respectively. The H(added) column lists the number of hydrogen atoms added and optimized by MolProbity. The Clashes column lists the number of clashes within the asymmetric unit, whereas Symm-Clashes lists symmetry-related clashes.

Mol	Chain	Non-H	H(model)	H(added)	Clashes	Symm-Clashes
1	A	7369	0	7153	51	0
2	B	3188	0	3163	33	0
2	C	3168	0	3113	56	0
3	P	413	0	224	16	0
4	T	406	0	225	30	0
All	All	14544	0	13878	164	0

The all-atom clashscore is defined as the number of clashes found per 1000 atoms (including hydrogen atoms). The all-atom clashscore for this structure is 6.

All (164) close contacts within the same asymmetric unit are listed below, sorted by their clash magnitude.

Atom-1	Atom-2	Interatomic distance (Å)	Clash overlap (Å)
2:C:204:LEU:HG	2:C:333:PRO:HG3	1.32	1.12
2:C:204:LEU:HD21	2:C:333:PRO:HB3	1.34	1.07
2:C:204:LEU:HD23	2:C:204:LEU:O	1.55	1.06
2:C:204:LEU:CG	2:C:333:PRO:HG3	1.96	0.95
4:T:3:DG:H2''	4:T:4:DC:C5'	1.97	0.94
3:P:28[B]:DA:H2	4:T:3:DG:H1	1.05	0.93
3:P:28[A]:DA:H2	4:T:3:DG:N1	1.67	0.92
2:C:147:LEU:H	2:C:157:LEU:HD12	1.34	0.89
3:P:28[A]:DA:H2	4:T:3:DG:H1	0.87	0.85
2:C:157:LEU:HD23	2:C:229:LYS:HD2	1.60	0.83
2:B:75:ARG:NH2	2:B:81:GLY:O	2.13	0.81
1:A:1074:VAL:HG12	1:A:1075:LEU:HD23	1.64	0.80
4:T:3:DG:H2''	4:T:4:DC:H5''	1.63	0.79
4:T:18:DT:H2''	4:T:19:DC:C6	2.18	0.79
4:T:3:DG:C2'	4:T:4:DC:OP2	2.26	0.77
4:T:2:DC:H1'	4:T:3:DG:C2	2.24	0.72
1:A:491:ASP:O	1:A:574:ARG:NH2	2.22	0.72
2:B:83:LYS:NZ	2:B:85:GLN:O	2.23	0.72
1:A:761:ASN:ND2	1:A:763:GLY:O	2.24	0.71
1:A:902:LEU:HD23	1:A:1168:LEU:HD21	1.73	0.70
2:C:204:LEU:HD21	2:C:333:PRO:CB	2.16	0.70
1:A:892:ASP:OD2	1:A:1181:SER:OG	2.11	0.69

Continued on next page...

Continued from previous page...

Atom-1	Atom-2	Interatomic distance (Å)	Clash overlap (Å)
2:C:157:LEU:CD2	2:C:217:PRO:HB3	2.23	0.68
2:C:147:LEU:N	2:C:157:LEU:HD12	2.06	0.68
2:B:130:ALA:O	2:B:182:ARG:NH1	2.27	0.68
3:P:28[B]:DA:H2	4:T:3:DG:N1	1.86	0.67
2:C:409:ASN:OD1	2:C:472:LYS:HD3	1.96	0.65
1:A:169:TRP:HB3	1:A:393:MET:HE2	1.77	0.65
1:A:252:GLY:O	1:A:260:ASP:N	2.30	0.64
2:C:157:LEU:HD21	2:C:217:PRO:HB3	1.80	0.64
4:T:16:DT:H2''	4:T:17:DG:C8	2.33	0.64
2:C:204:LEU:CD1	2:C:333:PRO:HG3	2.29	0.63
1:A:489:GLU:OE2	1:A:575:LYS:NZ	2.31	0.62
1:A:921:LEU:HD21	1:A:1174:PRO:HG2	1.81	0.62
1:A:1065:ALA:O	1:A:1071:ARG:NH2	2.33	0.62
4:T:19:DC:H2''	4:T:20:DT:C6	2.35	0.62
4:T:4:DC:H2''	4:T:5:DG:C8	2.35	0.61
3:P:10:DA:H2	4:T:21:DT:O2	1.82	0.61
2:C:148:VAL:HG13	2:C:178:SER:HB2	1.81	0.61
2:C:204:LEU:HG	2:C:333:PRO:CG	2.22	0.61
2:C:80:SER:O	2:C:85:GLN:NE2	2.34	0.60
3:P:16:DG:C2	3:P:17:DT:C2	2.89	0.60
4:T:3:DG:C2'	4:T:4:DC:H5''	2.31	0.59
2:C:403:PHE:CE2	2:C:413:VAL:HG22	2.37	0.59
2:C:204:LEU:HD23	2:C:204:LEU:C	2.22	0.59
1:A:1054:GLU:N	1:A:1056:GLU:OE1	2.36	0.59
4:T:5:DG:H2''	4:T:6:DC:H5'	1.85	0.59
3:P:10:DA:C2	4:T:21:DT:O2	2.57	0.57
4:T:18:DT:H2''	4:T:19:DC:H6	1.69	0.57
1:A:276:ALA:HA	1:A:841:LEU:HD12	1.86	0.56
1:A:885:THR:OG1	1:A:1186:ASP:O	2.18	0.56
2:C:148:VAL:HG22	2:C:180:LYS:HB2	1.87	0.56
1:A:81:ARG:HE	1:A:921:LEU:HD23	1.69	0.56
2:C:204:LEU:CD2	2:C:333:PRO:HB3	2.22	0.56
4:T:3:DG:H2'	4:T:4:DC:OP2	2.04	0.55
2:B:155:GLU:HB2	2:B:158:GLN:HB2	1.89	0.55
2:C:149:SER:OG	2:C:154:ARG:O	2.25	0.55
2:B:120:VAL:HG22	2:C:407:LEU:CD1	2.38	0.54
2:C:147:LEU:HD12	2:C:157:LEU:CD1	2.37	0.54
2:C:163:SER:O	2:C:163:SER:OG	2.23	0.54
1:A:97:GLU:N	1:A:97:GLU:OE1	2.40	0.54
2:C:403:PHE:CD2	2:C:413:VAL:HG22	2.42	0.54
1:A:921:LEU:HD21	1:A:1174:PRO:CG	2.38	0.54

Continued on next page...

Continued from previous page...

Atom-1	Atom-2	Interatomic distance (Å)	Clash overlap (Å)
4:T:3:DG:H1'	4:T:4:DC:H4'	1.90	0.54
2:C:157:LEU:HD22	2:C:217:PRO:HB3	1.90	0.54
2:C:139:LEU:HD22	2:C:178:SER:HB2	1.89	0.54
2:B:289:LEU:HD12	2:B:301:GLU:HB3	1.90	0.53
2:B:233:GLU:OE2	2:C:133:HIS:ND1	2.29	0.53
4:T:2:DC:H1'	4:T:3:DG:N1	2.25	0.52
4:T:10:DG:H2''	4:T:11:DC:H5'	1.90	0.52
2:B:147:LEU:HD13	2:C:154:ARG:HD2	1.90	0.52
4:T:6:DC:H2''	4:T:7:DG:C8	2.44	0.52
4:T:20:DT:H2'	4:T:21:DT:C6	2.45	0.51
1:A:904:ASP:OD1	1:A:905:ALA:N	2.44	0.51
2:C:204:LEU:O	2:C:204:LEU:CD2	2.43	0.51
1:A:212:ALA:HB3	1:A:223:TRP:HB3	1.93	0.51
2:C:147:LEU:HD21	2:C:231:ILE:HD12	1.91	0.51
2:B:450:ASN:O	2:B:452:LEU:N	2.44	0.51
2:C:117:SER:O	2:C:122:ARG:NH2	2.44	0.51
2:C:162:LEU:HD13	2:C:164:LYS:CB	2.41	0.51
2:C:403:PHE:CD2	2:C:413:VAL:CG2	2.93	0.50
1:A:84:HIS:O	1:A:84:HIS:CD2	2.64	0.50
2:C:157:LEU:CD2	2:C:229:LYS:HD2	2.37	0.50
3:P:14:DC:H2''	3:P:15:DA:O5'	2.10	0.50
1:A:162:LEU:HD21	1:A:215:ILE:HB	1.92	0.50
2:B:204:LEU:HD11	2:B:333:PRO:HB3	1.93	0.50
2:B:259:ARG:HD2	2:B:338:VAL:HG11	1.93	0.50
2:B:453:ILE:HD12	2:B:453:ILE:O	2.13	0.49
3:P:28[A]:DA:C2	4:T:3:DG:N1	2.54	0.49
2:B:396:ARG:HH12	2:B:400:GLN:HB2	1.77	0.49
1:A:1074:VAL:HG13	1:A:1167:LYS:HG3	1.92	0.49
2:B:116:THR:HA	2:B:120:VAL:HG12	1.93	0.49
1:A:852:ARG:NH2	1:A:1103:SER:OG	2.44	0.49
2:B:82:SER:O	2:C:195:ASN:ND2	2.45	0.48
2:C:204:LEU:C	2:C:204:LEU:CD2	2.80	0.48
3:P:11:DA:H2''	3:P:12:DG:C8	2.48	0.48
1:A:1154:GLN:HG3	1:A:1218:LEU:HD11	1.96	0.48
2:C:256:LEU:HD22	2:C:287:ASN:CG	2.33	0.48
1:A:265:LEU:HD21	1:A:292:LEU:HD12	1.96	0.48
1:A:83:LEU:HD23	1:A:1174:PRO:HA	1.95	0.47
1:A:192:GLU:OE2	1:A:221:TYR:OH	2.31	0.47
1:A:211:LEU:HD21	1:A:393:MET:HG2	1.96	0.47
4:T:18:DT:H2''	4:T:19:DC:C5	2.49	0.47
1:A:435:LEU:HD22	1:A:878:VAL:HG21	1.96	0.47

Continued on next page...

Continued from previous page...

Atom-1	Atom-2	Interatomic distance (Å)	Clash overlap (Å)
1:A:851:THR:HG22	1:A:1099:TRP:HA	1.96	0.47
2:B:403:PHE:CE2	2:B:407:LEU:HD11	2.50	0.47
1:A:606:THR:HG22	1:A:779:LEU:CD1	2.46	0.46
2:B:143:SER:HB3	2:C:153:LEU:HG	1.98	0.46
2:B:388:GLY:N	2:B:443:VAL:O	2.48	0.46
3:P:10:DA:H2'	3:P:10:DA:P	2.55	0.46
2:B:436:SER:O	2:B:436:SER:OG	2.26	0.46
1:A:162:LEU:HD12	1:A:163:PRO:HD2	1.97	0.46
2:B:153:LEU:HD23	2:B:153:LEU:HA	1.78	0.46
1:A:178:TYR:HH	1:A:222:SER:HG	1.63	0.45
4:T:7:DG:H2'	4:T:8:DC:C6	2.51	0.45
4:T:3:DG:C4	4:T:4:DC:O4'	2.70	0.45
4:T:19:DC:H2''	4:T:20:DT:H6	1.80	0.45
2:C:181:LEU:HD23	2:C:181:LEU:HA	1.78	0.45
3:P:27:DG:H2''	3:P:28[B]:DA:C8	2.52	0.45
2:B:154:ARG:HG3	2:C:166:GLN:CB	2.47	0.44
1:A:1075:LEU:HD21	1:A:1107:ASP:HB3	1.98	0.44
1:A:752:LEU:O	1:A:754:HIS:N	2.50	0.44
1:A:123:VAL:HG13	1:A:1219:ASP:OD2	2.18	0.43
2:B:353:SER:OG	2:B:374:LEU:HD12	2.19	0.43
2:B:388:GLY:HA2	2:B:442:LEU:HD11	1.99	0.43
1:A:905:ALA:HB3	1:A:1168:LEU:HD23	2.00	0.43
1:A:197:PHE:HD1	1:A:214:ALA:HB2	1.83	0.43
2:B:78:PHE:HD2	2:C:199:LEU:HD13	1.83	0.43
2:B:91:LEU:HB3	2:B:347:LEU:HD21	1.99	0.43
2:C:305:ASN:HA	2:C:336:LEU:HD23	2.01	0.43
1:A:301:ILE:HG21	1:A:413:LEU:HD23	2.01	0.42
2:C:179:GLY:O	2:C:180:LYS:C	2.58	0.42
1:A:231:GLU:HG3	2:C:449:GLU:HA	2.01	0.42
3:P:10:DA:C2	4:T:21:DT:C2	3.08	0.42
2:C:149:SER:OG	2:C:150:ALA:N	2.52	0.42
2:C:182:ARG:O	2:C:182:ARG:HG3	2.19	0.42
1:A:472:GLN:HB2	2:B:367:LEU:HD21	2.02	0.42
2:C:138:LEU:O	2:C:139:LEU:C	2.57	0.42
2:B:170:PHE:O	2:B:174:VAL:N	2.49	0.42
1:A:211:LEU:HD11	1:A:393:MET:HA	2.02	0.41
1:A:242:ALA:O	1:A:279:ARG:N	2.46	0.41
1:A:301:ILE:HD11	1:A:414:PHE:HB2	2.02	0.41
2:B:231:ILE:HD12	2:B:231:ILE:N	2.36	0.41
2:C:136:GLY:C	2:C:138:LEU:N	2.73	0.41
3:P:14:DC:H42	4:T:17:DG:H1	1.68	0.41

Continued on next page...

Continued from previous page...

Atom-1	Atom-2	Interatomic distance (Å)	Clash overlap (Å)
1:A:768:LYS:HB2	3:P:24:DC:OP1	2.21	0.41
1:A:568:GLY:N	2:B:464:GLU:OE2	2.49	0.41
3:P:17:DT:H2'	3:P:18:DC:C6	2.56	0.41
1:A:992:LEU:HD23	1:A:1050:LYS:HA	2.02	0.41
2:B:120:VAL:HG22	2:C:407:LEU:HD12	2.01	0.41
2:C:411:ILE:HD12	2:C:411:ILE:N	2.36	0.41
1:A:161:GLN:HA	1:A:161:GLN:OE1	2.20	0.40
1:A:200:GLU:O	1:A:210:THR:O	2.39	0.40
1:A:237:SER:O	1:A:814:VAL:HG13	2.21	0.40
1:A:992:LEU:HD22	1:A:1031:GLU:HA	2.03	0.40
2:B:120:VAL:HG22	2:C:407:LEU:HD11	2.03	0.40
2:B:390:GLY:N	2:B:391:PRO:CD	2.84	0.40
2:B:266:PHE:HB3	2:B:378:LEU:HD11	2.02	0.40
2:C:107:ARG:HD3	2:C:235:THR:HG21	2.04	0.40
2:C:162:LEU:HD12	2:C:162:LEU:O	2.21	0.40
2:C:322:LEU:HD12	2:C:322:LEU:O	2.21	0.40
2:C:403:PHE:HD2	2:C:413:VAL:CG2	2.34	0.40
2:C:438:LEU:HD23	2:C:458:ARG:NH1	2.36	0.40
1:A:345:TRP:HE3	1:A:348:LEU:HD11	1.87	0.40

There are no symmetry-related clashes.

5.3 Torsion angles [i](#)

5.3.1 Protein backbone [i](#)

In the following table, the Percentiles column shows the percent Ramachandran outliers of the chain as a percentile score with respect to all PDB entries followed by that with respect to all EM entries.

The Analysed column shows the number of residues for which the backbone conformation was analysed, and the total number of residues.

Mol	Chain	Analysed	Favoured	Allowed	Outliers	Percentiles
1	A	929/1239 (75%)	865 (93%)	61 (7%)	3 (0%)	41 56
2	B	390/485 (80%)	367 (94%)	22 (6%)	1 (0%)	41 56
2	C	394/485 (81%)	377 (96%)	17 (4%)	0	100 100
All	All	1713/2209 (78%)	1609 (94%)	100 (6%)	4 (0%)	50 64

All (4) Ramachandran outliers are listed below:

Mol	Chain	Res	Type
1	A	250	PRO
1	A	742	VAL
2	B	174	VAL
1	A	559	LEU

5.3.2 Protein sidechains [i](#)

In the following table, the Percentiles column shows the percent sidechain outliers of the chain as a percentile score with respect to all PDB entries followed by that with respect to all EM entries.

The Analysed column shows the number of residues for which the sidechain conformation was analysed, and the total number of residues.

Mol	Chain	Analysed	Rotameric	Outliers	Percentiles	
1	A	768/1044 (74%)	743 (97%)	25 (3%)	38	55
2	B	347/426 (82%)	331 (95%)	16 (5%)	27	41
2	C	341/426 (80%)	330 (97%)	11 (3%)	39	56
All	All	1456/1896 (77%)	1404 (96%)	52 (4%)	38	52

All (52) residues with a non-rotameric sidechain are listed below:

Mol	Chain	Res	Type
1	A	81	ARG
1	A	84	HIS
1	A	87	ILE
1	A	88	PHE
1	A	122	ASP
1	A	126	ARG
1	A	181	GLU
1	A	191	GLU
1	A	210	THR
1	A	211	LEU
1	A	218	SER
1	A	248	GLU
1	A	344	SER
1	A	391	ASP
1	A	443	ARG
1	A	550	GLN
1	A	603	MET
1	A	606	THR
1	A	765	PRO

Continued on next page...

Continued from previous page...

Mol	Chain	Res	Type
1	A	769	ASP
1	A	795	ASN
1	A	949	PHE
1	A	970	ASN
1	A	1056	GLU
1	A	1075	LEU
2	B	70	LEU
2	B	87	SER
2	B	138	LEU
2	B	139	LEU
2	B	145	PHE
2	B	159	ASP
2	B	261	GLN
2	B	347	LEU
2	B	364	LYS
2	B	387	VAL
2	B	389	ARG
2	B	392	THR
2	B	421	MET
2	B	422	GLN
2	B	436	SER
2	B	485	VAL
2	C	89	ASP
2	C	143	SER
2	C	159	ASP
2	C	163	SER
2	C	230	SER
2	C	238	SER
2	C	249	ASN
2	C	277	ASP
2	C	323	HIS
2	C	328	ARG
2	C	334	CYS

Sometimes sidechains can be flipped to improve hydrogen bonding and reduce clashes. All (20) such sidechains are listed below:

Mol	Chain	Res	Type
1	A	84	HIS
1	A	134	ASN
1	A	144	GLN
1	A	270	ASN
1	A	394	GLN

Continued on next page...

Continued from previous page...

Mol	Chain	Res	Type
1	A	550	GLN
1	A	595	GLN
1	A	803	ASN
1	A	894	GLN
1	A	950	ASN
1	A	1059	ASN
1	A	1110	HIS
1	A	1214	GLN
2	B	133	HIS
2	B	187	HIS
2	B	272	ASN
2	C	250	GLN
2	C	309	HIS
2	C	330	ASN
2	C	400	GLN

5.3.3 RNA [i](#)

There are no RNA molecules in this entry.

5.4 Non-standard residues in protein, DNA, RNA chains [i](#)

There are no non-standard protein/DNA/RNA residues in this entry.

5.5 Carbohydrates [i](#)

There are no monosaccharides in this entry.

5.6 Ligand geometry [i](#)

There are no ligands in this entry.

5.7 Other polymers [i](#)

There are no such residues in this entry.

5.8 Polymer linkage issues [i](#)

There are no chain breaks in this entry.

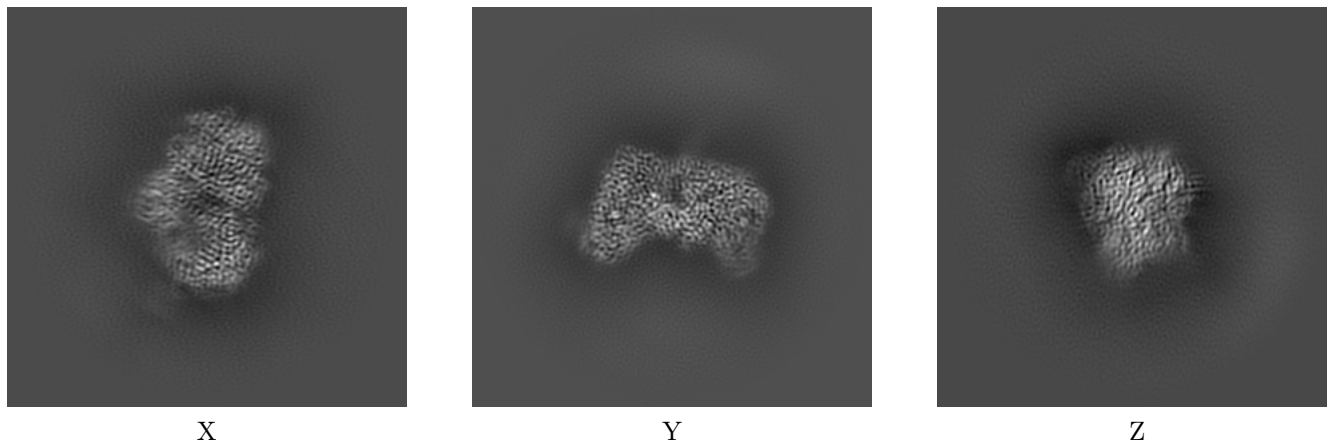
6 Map visualisation [i](#)

This section contains visualisations of the EMDB entry EMD-29746. These allow visual inspection of the internal detail of the map and identification of artifacts.

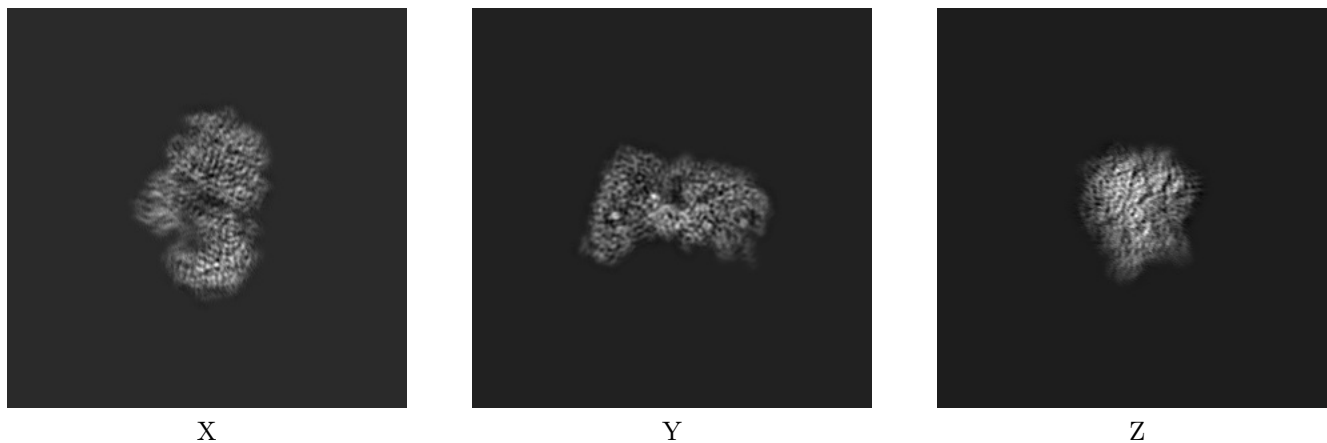
Images derived from a raw map, generated by summing the deposited half-maps, are presented below the corresponding image components of the primary map to allow further visual inspection and comparison with those of the primary map.

6.1 Orthogonal projections [i](#)

6.1.1 Primary map



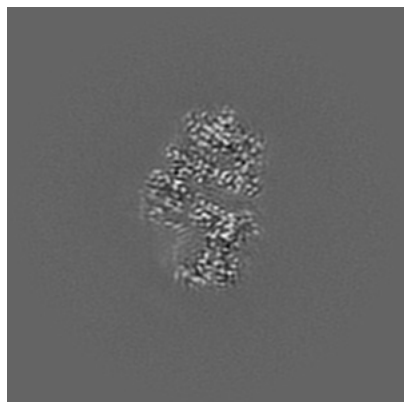
6.1.2 Raw map



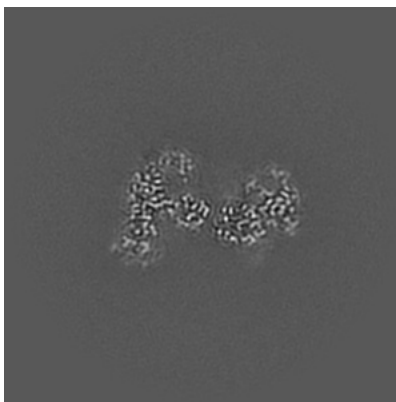
The images above show the map projected in three orthogonal directions.

6.2 Central slices [i](#)

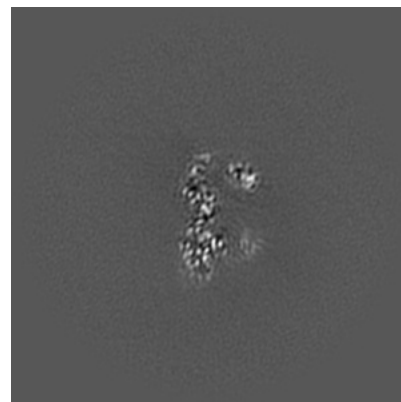
6.2.1 Primary map



X Index: 160

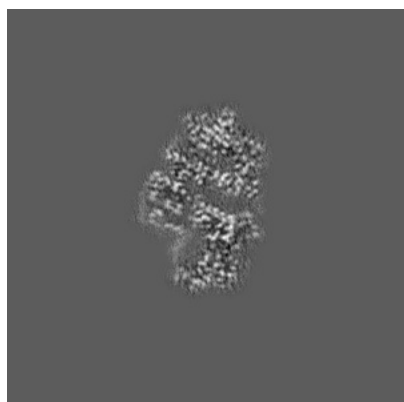


Y Index: 160



Z Index: 160

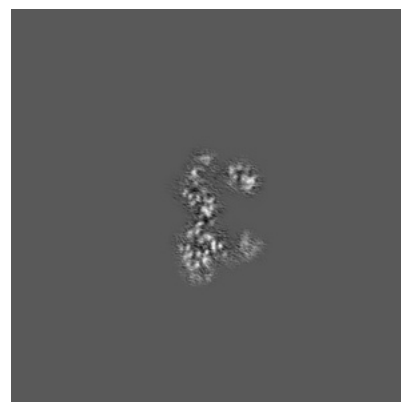
6.2.2 Raw map



X Index: 160



Y Index: 160

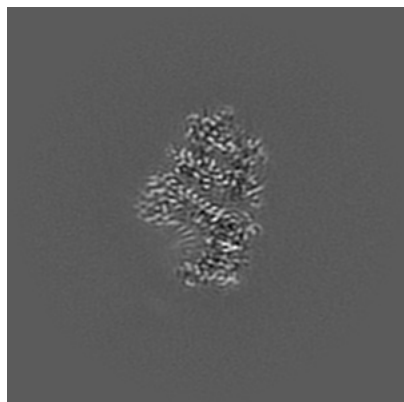


Z Index: 160

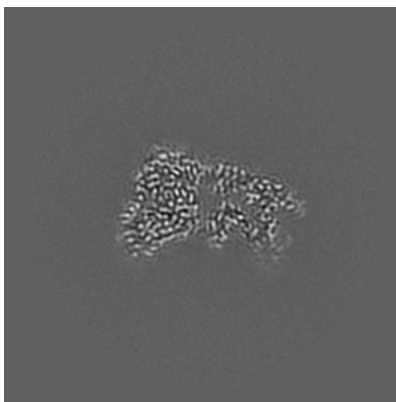
The images above show central slices of the map in three orthogonal directions.

6.3 Largest variance slices [i](#)

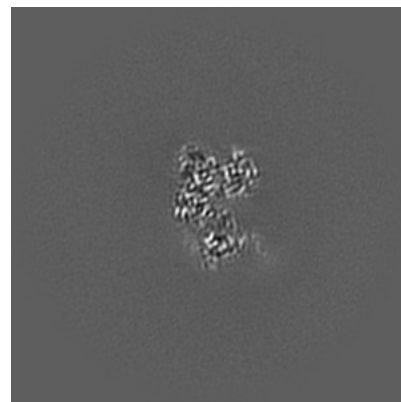
6.3.1 Primary map



X Index: 157

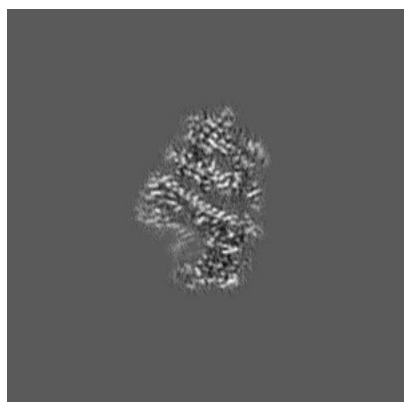


Y Index: 178

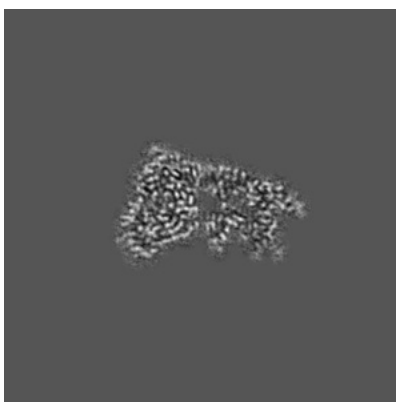


Z Index: 180

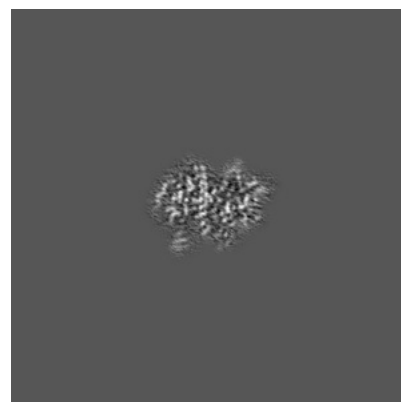
6.3.2 Raw map



X Index: 158



Y Index: 179

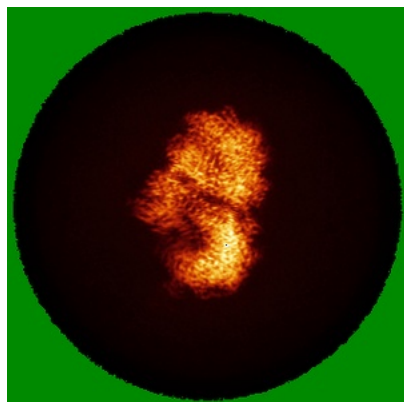


Z Index: 114

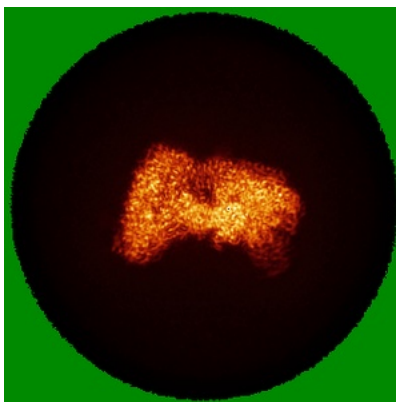
The images above show the largest variance slices of the map in three orthogonal directions.

6.4 Orthogonal standard-deviation projections (False-color) [i](#)

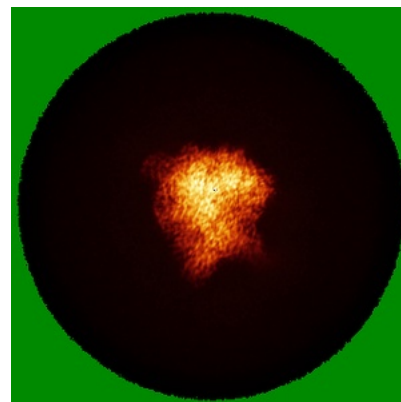
6.4.1 Primary map



X

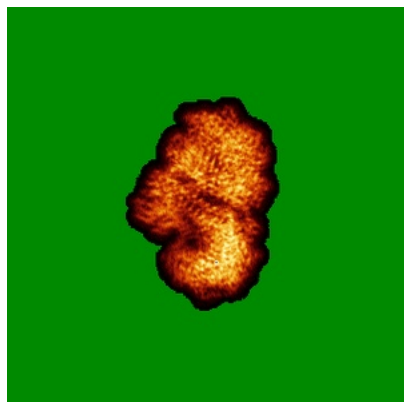


Y

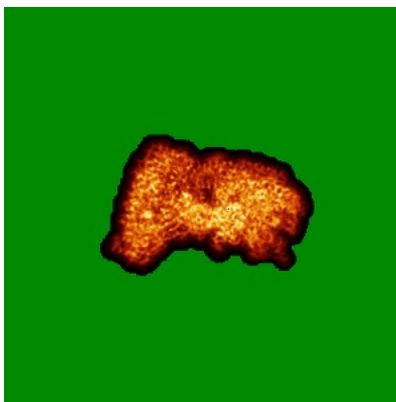


Z

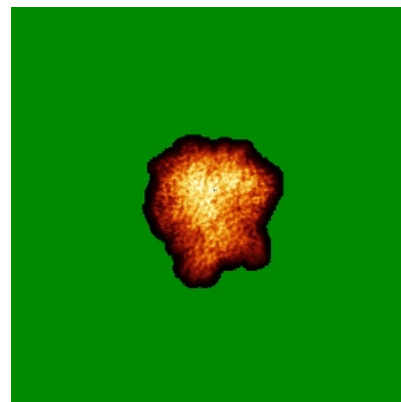
6.4.2 Raw map



X



Y

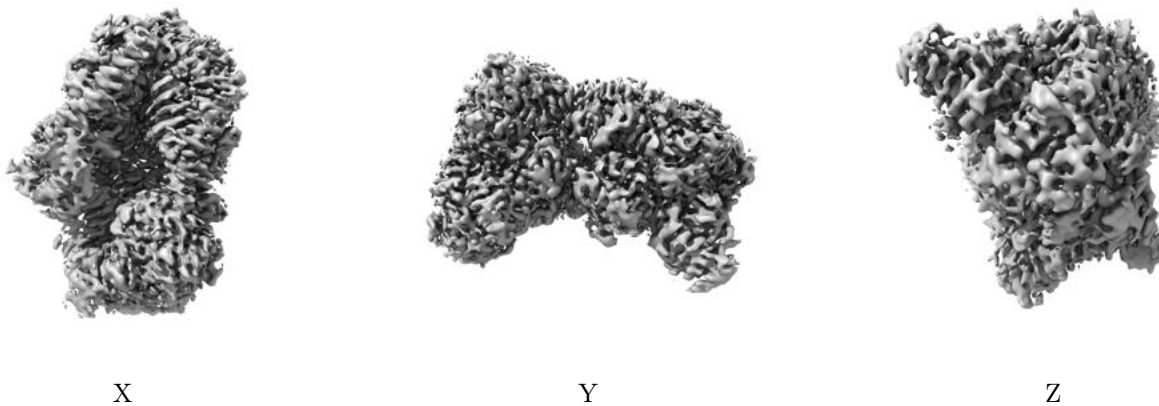


Z

The images above show the map standard deviation projections with false color in three orthogonal directions. Minimum values are shown in green, max in blue, and dark to light orange shades represent small to large values respectively.

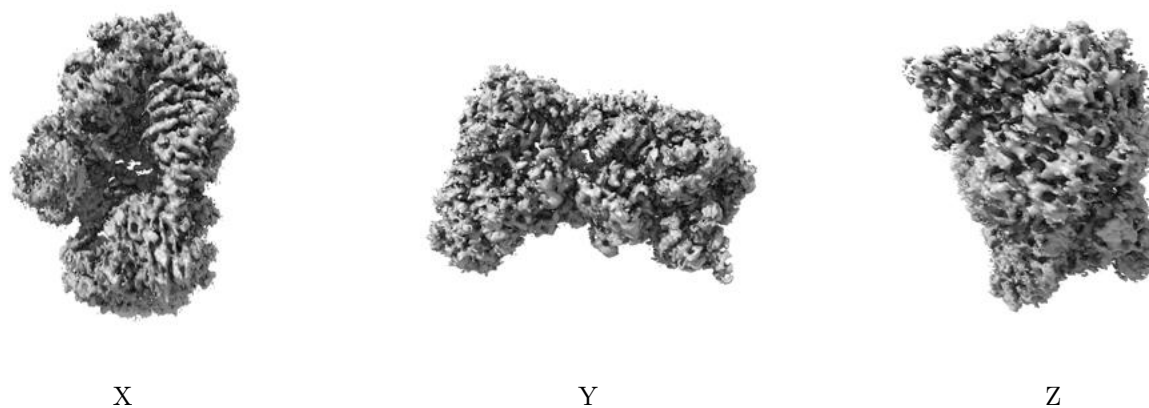
6.5 Orthogonal surface views [i](#)

6.5.1 Primary map



The images above show the 3D surface view of the map at the recommended contour level 0.08. These images, in conjunction with the slice images, may facilitate assessment of whether an appropriate contour level has been provided.

6.5.2 Raw map



These images show the 3D surface of the raw map. The raw map's contour level was selected so that its surface encloses the same volume as the primary map does at its recommended contour level.

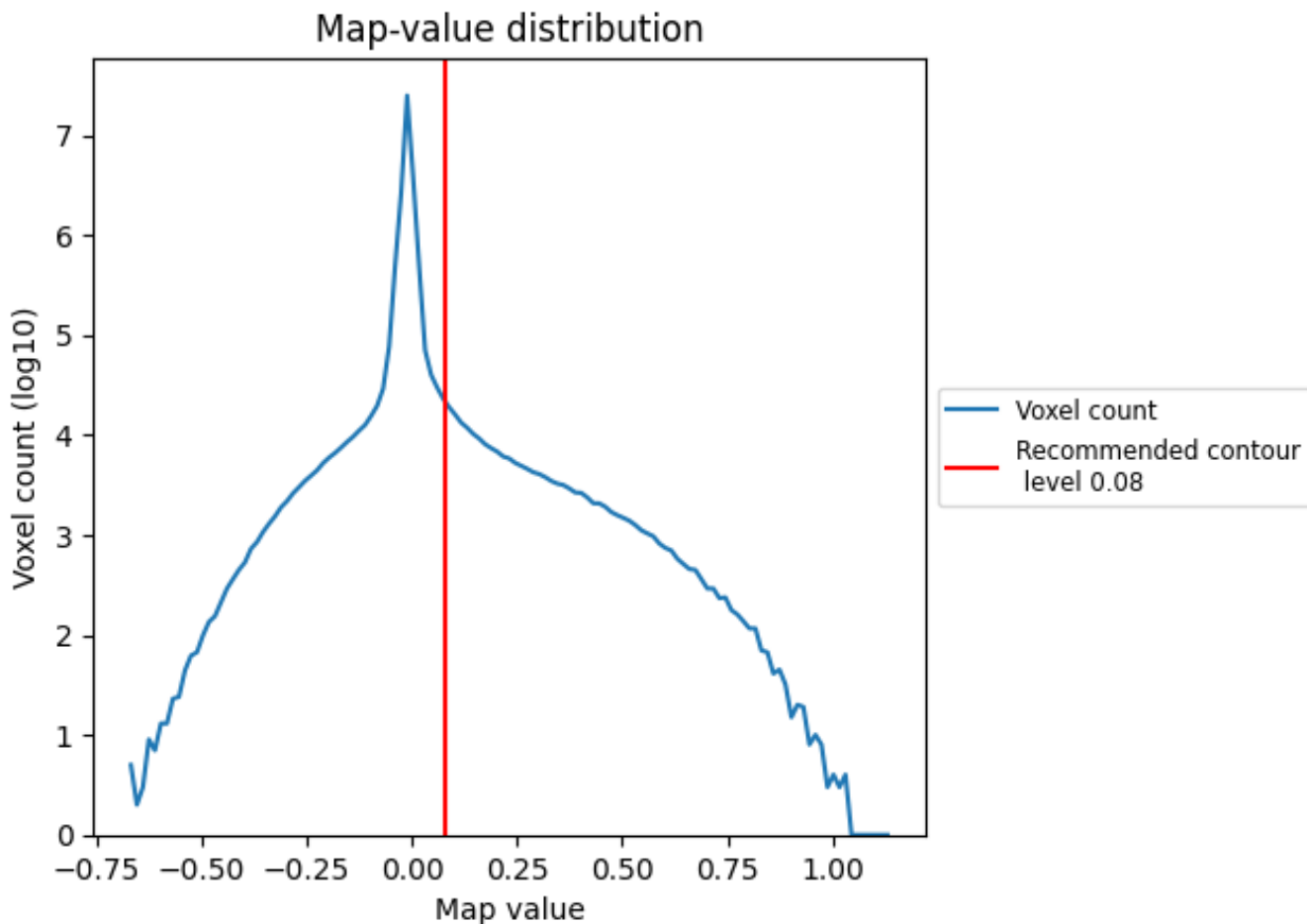
6.6 Mask visualisation [i](#)

This section was not generated. No masks/segmentation were deposited.

7 Map analysis [i](#)

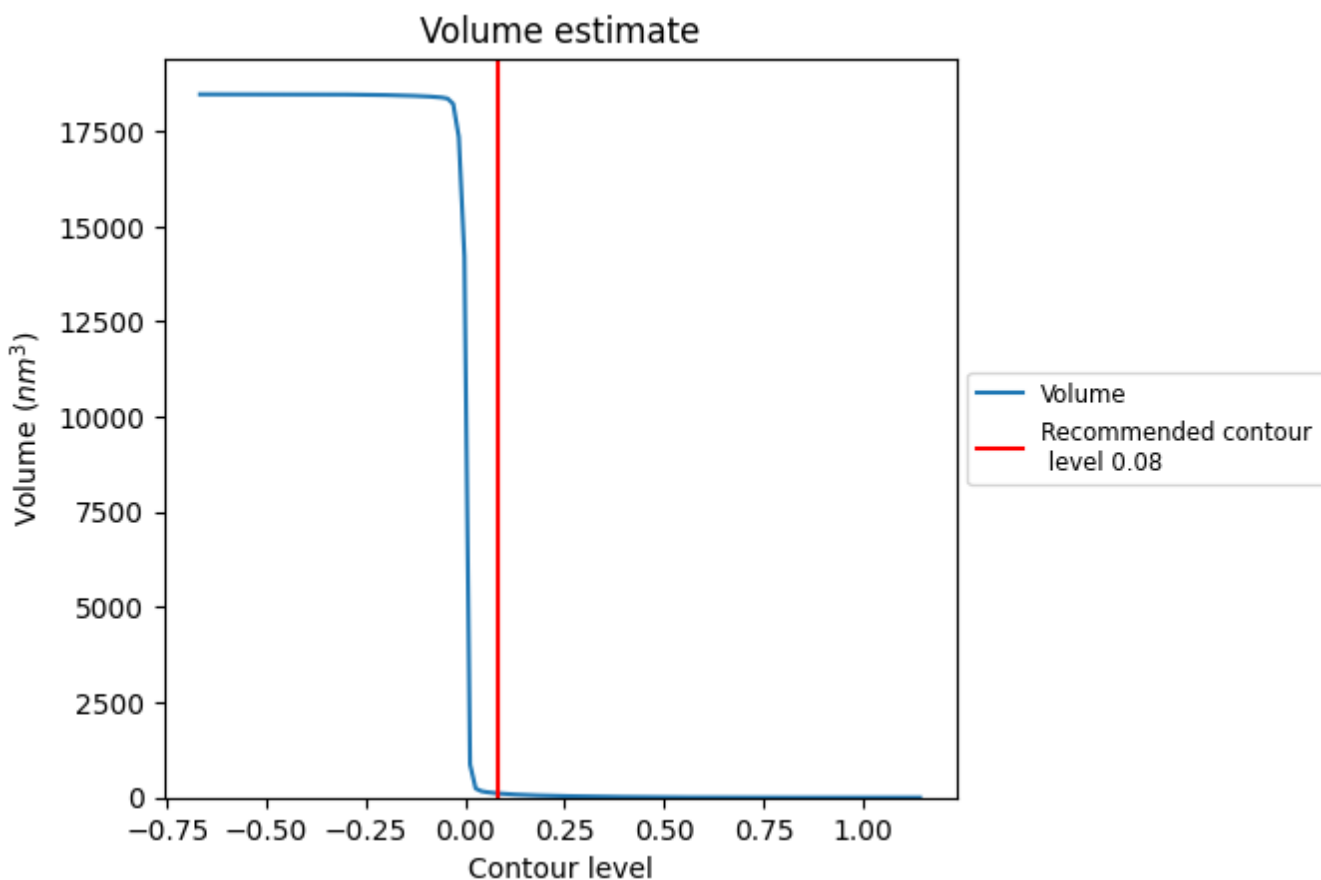
This section contains the results of statistical analysis of the map.

7.1 Map-value distribution [i](#)



The map-value distribution is plotted in 128 intervals along the x-axis. The y-axis is logarithmic. A spike in this graph at zero usually indicates that the volume has been masked.

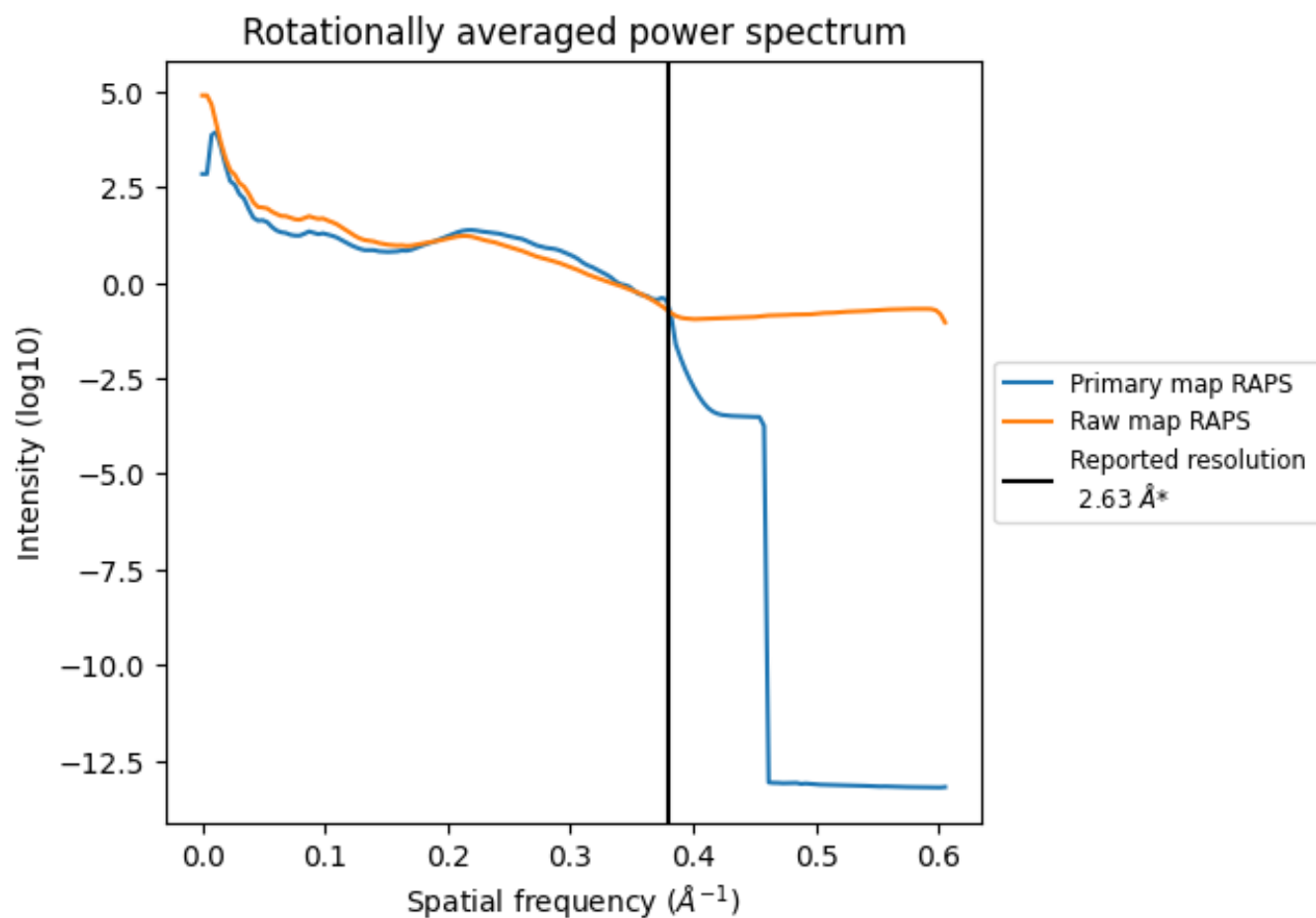
7.2 Volume estimate [i](#)



The volume at the recommended contour level is 112 nm^3 ; this corresponds to an approximate mass of 101 kDa.

The volume estimate graph shows how the enclosed volume varies with the contour level. The recommended contour level is shown as a vertical line and the intersection between the line and the curve gives the volume of the enclosed surface at the given level.

7.3 Rotationally averaged power spectrum i

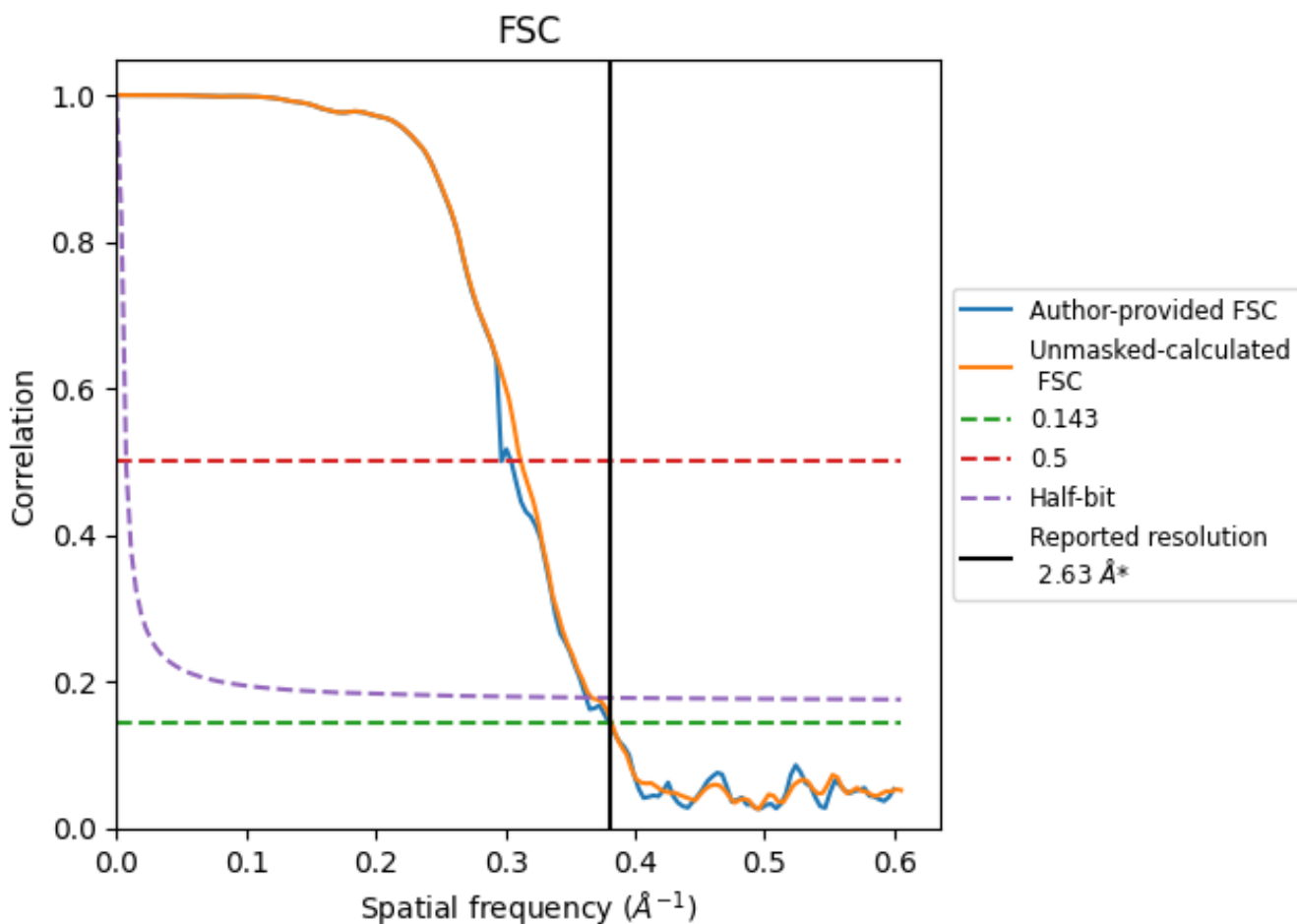


*Reported resolution corresponds to spatial frequency of 0.380 \AA^{-1}

8 Fourier-Shell correlation [i](#)

Fourier-Shell Correlation (FSC) is the most commonly used method to estimate the resolution of single-particle and subtomogram-averaged maps. The shape of the curve depends on the imposed symmetry, mask and whether or not the two 3D reconstructions used were processed from a common reference. The reported resolution is shown as a black line. A curve is displayed for the half-bit criterion in addition to lines showing the 0.143 gold standard cut-off and 0.5 cut-off.

8.1 FSC [i](#)



*Reported resolution corresponds to spatial frequency of 0.380 Å⁻¹

8.2 Resolution estimates [i](#)

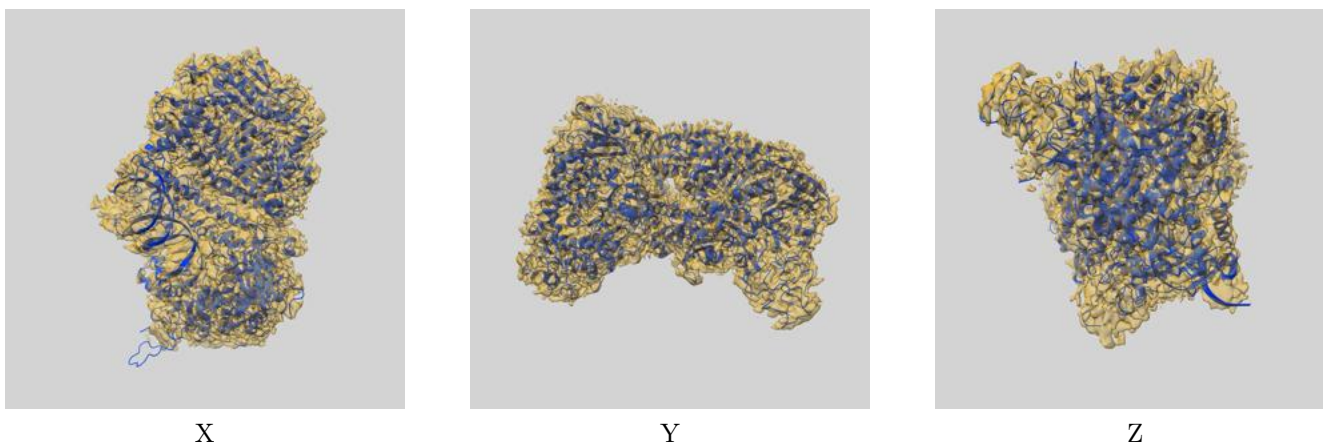
Resolution estimate (Å)	Estimation criterion (FSC cut-off)		
	0.143	0.5	Half-bit
Reported by author	2.63	-	-
Author-provided FSC curve	2.63	3.28	2.76
Unmasked-calculated*	2.62	3.20	2.73

*Resolution estimate based on FSC curve calculated by comparison of deposited half-maps.

9 Map-model fit [i](#)

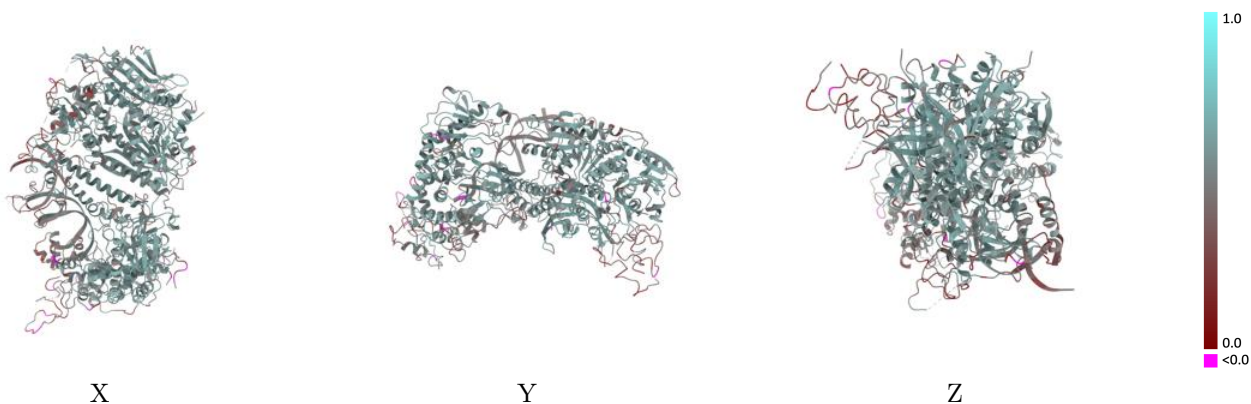
This section contains information regarding the fit between EMDB map EMD-29746 and PDB model 8G5J. Per-residue inclusion information can be found in section [3](#) on page [4](#).

9.1 Map-model overlay [i](#)



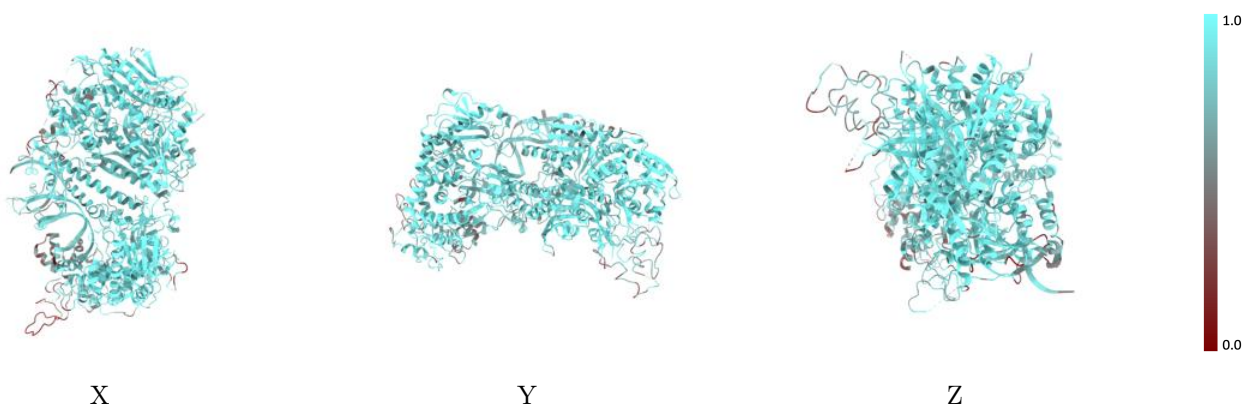
The images above show the 3D surface view of the map at the recommended contour level 0.08 at 50% transparency in yellow overlaid with a ribbon representation of the model coloured in blue. These images allow for the visual assessment of the quality of fit between the atomic model and the map.

9.2 Q-score mapped to coordinate model [i](#)



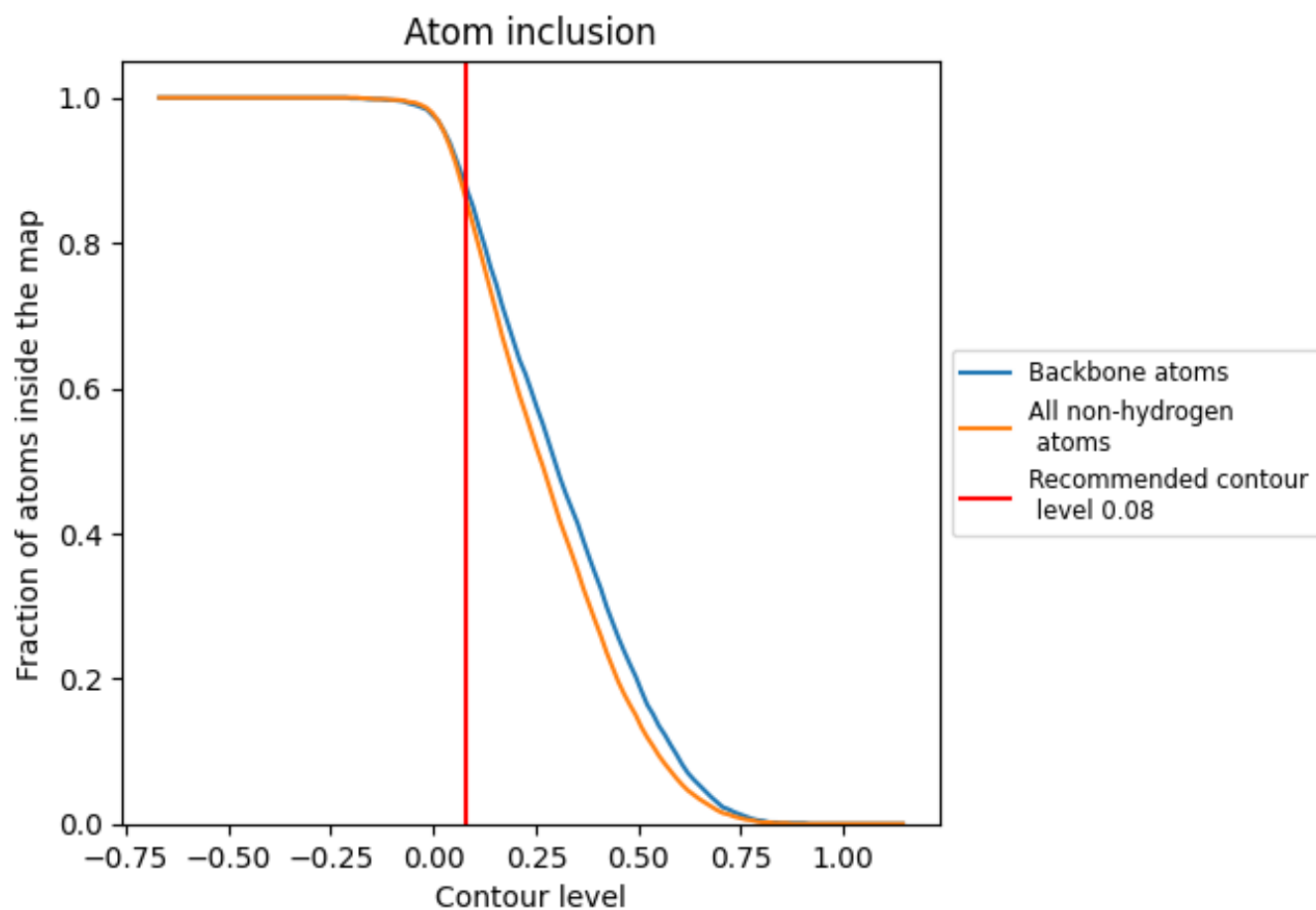
The images above show the model with each residue coloured according to its Q-score. This shows their resolvability in the map with higher Q-score values reflecting better resolvability. Please note: Q-score is calculating the resolvability of atoms, and thus high values are only expected at resolutions at which atoms can be resolved. Low Q-score values may therefore be expected for many entries.

9.3 Atom inclusion mapped to coordinate model [i](#)



The images above show the model with each residue coloured according to its atom inclusion. This shows to what extent they are inside the map at the recommended contour level (0.08).













9.4 Atom inclusion [i](#)



At the recommended contour level, 88% of all backbone atoms, 86% of all non-hydrogen atoms, are inside the map.

9.5 Map-model fit summary [i](#)

The table lists the average atom inclusion at the recommended contour level (0.08) and Q-score for the entire model and for each chain.

Chain	Atom inclusion	Q-score
All	 0.8600	 0.5130
A	 0.8420	 0.4990
B	 0.8850	 0.5310
C	 0.9010	 0.5460
P	 0.8170	 0.4550
T	 0.7220	 0.4180

