



Full wwPDB X-ray Structure Validation Report ⓘ

Sep 14, 2020 – 01:07 AM BST

PDB ID : 6FXG
Title : Crystal structure of substrate binding domain 1 (SBD1) OF ABC transporter GLNPQ in complex with Asparagine
Authors : Guskov, A.; Schuurman-Wolters, G.K.; Poolman, B.
Deposited on : 2018-03-09
Resolution : 1.70 Å(reported)

This is a Full wwPDB X-ray Structure Validation Report for a publicly released PDB entry.

We welcome your comments at validation@mail.wwpdb.org

A user guide is available at

<https://www.wwpdb.org/validation/2017/XrayValidationReportHelp>

with specific help available everywhere you see the ⓘ symbol.

The following versions of software and data (see [references ⓘ](#)) were used in the production of this report:

MolProbity : 4.02b-467
Mogul : 1.8.5 (274361), CSD as541be (2020)
Xtriage (Phenix) : 1.13
EDS : **FAILED**
Percentile statistics : 20191225.v01 (using entries in the PDB archive December 25th 2019)
Ideal geometry (proteins) : Engh & Huber (2001)
Ideal geometry (DNA, RNA) : Parkinson et al. (1996)
Validation Pipeline (wwPDB-VP) : 2.14.4.dev1

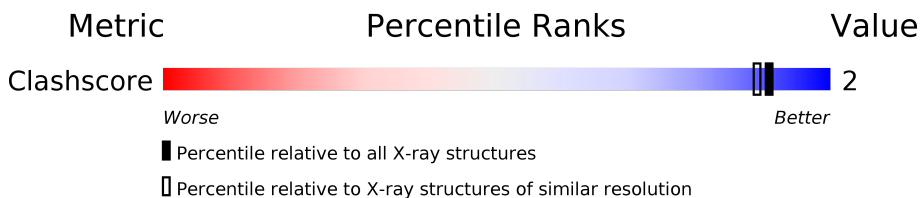
1 Overall quality at a glance i

The following experimental techniques were used to determine the structure:

X-RAY DIFFRACTION

The reported resolution of this entry is 1.70 Å.

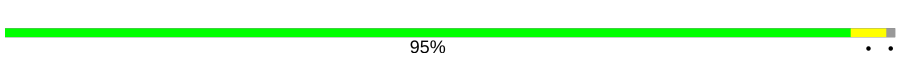
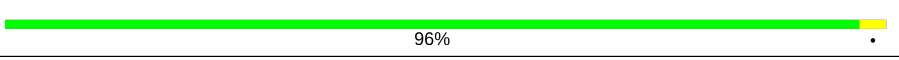
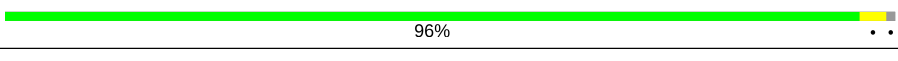
Percentile scores (ranging between 0-100) for global validation metrics of the entry are shown in the following graphic. The table shows the number of entries on which the scores are based.



Metric	Whole archive (#Entries)	Similar resolution (#Entries, resolution range(Å))
Clashscore	141614	4695 (1.70-1.70)

The table below summarises the geometric issues observed across the polymeric chains and their fit to the electron density. The red, orange, yellow and green segments on the lower bar indicate the fraction of residues that contain outliers for ≥ 3 , 2, 1 and 0 types of geometric quality criteria respectively. A grey segment represents the fraction of residues that are not modelled. The numeric value for each fraction is indicated below the corresponding segment, with a dot representing fractions $\leq 5\%$.

Note EDS failed to run properly.

Mol	Chain	Length	Quality of chain
1	A	227	 95%
1	B	227	 96%
1	C	227	 96%

2 Entry composition

There are 3 unique types of molecules in this entry. The entry contains 6254 atoms, of which 0 are hydrogens and 0 are deuteriums.

In the tables below, the ZeroOcc column contains the number of atoms modelled with zero occupancy, the AltConf column contains the number of residues with at least one atom in alternate conformation and the Trace column contains the number of residues modelled with at most 2 atoms.

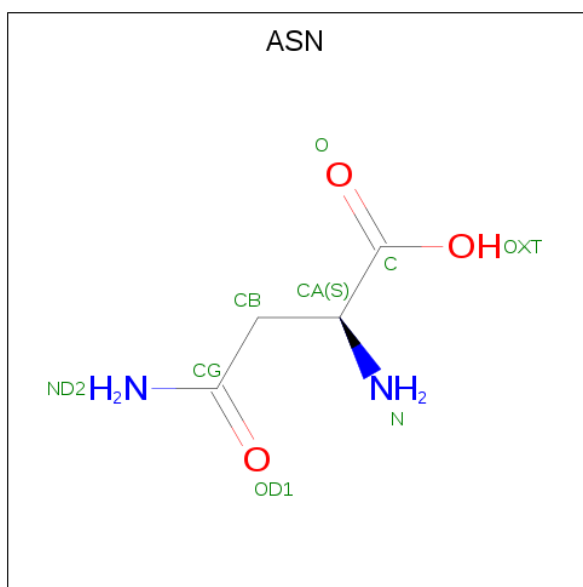
- Molecule 1 is a protein called Amino acid ABC transporter membrane protein PAAT family.

Mol	Chain	Residues	Atoms					ZeroOcc	AltConf	Trace
			Total	C	N	O	S			
1	A	225	Total 1748	C 1106	N 282	O 351	S 9	0	4	0
1	B	226	Total 1776	C 1122	N 285	O 359	S 10	0	6	0
1	C	224	Total 1753	C 1110	N 282	O 351	S 10	0	5	0

There are 6 discrepancies between the modelled and reference sequences:

Chain	Residue	Modelled	Actual	Comment	Reference
A	25	GLY	-	expression tag	UNP A0A1V0NHP2
A	26	MET	-	expression tag	UNP A0A1V0NHP2
B	25	GLY	-	expression tag	UNP A0A1V0NHP2
B	26	MET	-	expression tag	UNP A0A1V0NHP2
C	25	GLY	-	expression tag	UNP A0A1V0NHP2
C	26	MET	-	expression tag	UNP A0A1V0NHP2

- Molecule 2 is ASPARAGINE (three-letter code: ASN) (formula: C₄H₈N₂O₃).



Mol	Chain	Residues	Atoms				ZeroOcc	AltConf
			Total	C	N	O		
2	A	1	8	4	2	2	0	0
2	B	1	8	4	2	2	0	0
2	C	1	9	4	2	3	0	0

- Molecule 3 is water.

Mol	Chain	Residues	Atoms		ZeroOcc	AltConf
			Total	O		
3	A	360	366	366	0	6
3	B	281	284	284	0	3
3	C	300	302	302	0	2

3 Residue-property plots [i](#)

These plots are drawn for all protein, RNA, DNA and oligosaccharide chains in the entry. The first graphic for a chain summarises the proportions of the various outlier classes displayed in the second graphic. The second graphic shows the sequence view annotated by issues in geometry. Residues are color-coded according to the number of geometric quality criteria for which they contain at least one outlier: green = 0, yellow = 1, orange = 2 and red = 3 or more. Stretches of 2 or more consecutive residues without any outlier are shown as a green connector. Residues present in the sample, but not in the model, are shown in grey.

Note EDS failed to run properly.

- Molecule 1: Amino acid ABC transporter membrane protein PAAT family

Chain A:  95%



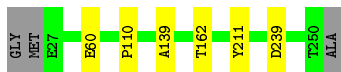
- Molecule 1: Amino acid ABC transporter membrane protein PAAT family

Chain B:  96%



- Molecule 1: Amino acid ABC transporter membrane protein PAAT family

Chain C:  96%



4 Data and refinement statistics i

EDS failed to run properly - this section is therefore incomplete.

Property	Value	Source
Space group	P 1 21 1	Depositor
Cell constants a, b, c, α , β , γ	41.87Å 74.27Å 110.24Å 90.00° 90.55° 90.00°	Depositor
Resolution (Å)	44.26 – 1.70	Depositor
% Data completeness (in resolution range)	92.5 (44.26-1.70)	Depositor
R_{merge}	(Not available)	Depositor
R_{sym}	(Not available)	Depositor
$\langle I/\sigma(I) \rangle$ ¹	5.93 (at 1.70Å)	Xtrriage
Refinement program	PHENIX (1.12_2829: ???)	Depositor
R, R_{free}	0.136 , 0.170	Depositor
Wilson B-factor (Å ²)	15.5	Xtrriage
Anisotropy	0.639	Xtrriage
L-test for twinning ²	$\langle L \rangle = 0.49$, $\langle L^2 \rangle = 0.32$	Xtrriage
Estimated twinning fraction	0.027 for h,-k,-l	Xtrriage
Total number of atoms	6254	wwPDB-VP
Average B, all atoms (Å ²)	23.0	wwPDB-VP

Xtrriage's analysis on translational NCS is as follows: *The largest off-origin peak in the Patterson function is 6.34% of the height of the origin peak. No significant pseudotranslation is detected.*

¹ Intensities estimated from amplitudes.

² Theoretical values of $\langle |L| \rangle$, $\langle L^2 \rangle$ for acentric reflections are 0.5, 0.333 respectively for untwinned datasets, and 0.375, 0.2 for perfectly twinned datasets.

5 Model quality [i](#)

5.1 Standard geometry [i](#)

The Z score for a bond length (or angle) is the number of standard deviations the observed value is removed from the expected value. A bond length (or angle) with $|Z| > 5$ is considered an outlier worth inspection. RMSZ is the root-mean-square of all Z scores of the bond lengths (or angles).

Mol	Chain	Bond lengths		Bond angles	
		RMSZ	# Z >5	RMSZ	# Z >5
1	A	0.48	0/1781	0.67	1/2400 (0.0%)
1	B	0.47	0/1809	0.66	1/2437 (0.0%)
1	C	0.43	0/1786	0.59	0/2407
All	All	0.46	0/5376	0.64	2/7244 (0.0%)

There are no bond length outliers.

All (2) bond angle outliers are listed below:

Mol	Chain	Res	Type	Atoms	Z	Observed($^{\circ}$)	Ideal($^{\circ}$)
1	B	182	MET	CG-SD-CE	-11.29	82.13	100.20
1	A	182	MET	CG-SD-CE	-11.13	82.39	100.20

There are no chirality outliers.

There are no planarity outliers.

5.2 Too-close contacts [i](#)

In the following table, the Non-H and H(model) columns list the number of non-hydrogen atoms and hydrogen atoms in the chain respectively. The H(added) column lists the number of hydrogen atoms added and optimized by MolProbity. The Clashes column lists the number of clashes within the asymmetric unit, whereas Symm-Clashes lists symmetry related clashes.

Mol	Chain	Non-H	H(model)	H(added)	Clashes	Symm-Clashes
1	A	1748	0	1709	8	0
1	B	1776	0	1727	7	0
1	C	1753	0	1713	4	0
2	A	8	0	5	0	0
2	B	8	0	5	0	0
2	C	9	0	5	0	0
3	A	366	0	0	4	1
3	B	284	0	0	3	0

Continued on next page...

Continued from previous page...

Mol	Chain	Non-H	H(model)	H(added)	Clashes	Symm-Clashes
3	C	302	0	0	2	1
All	All	6254	0	5164	18	1

The all-atom clashscore is defined as the number of clashes found per 1000 atoms (including hydrogen atoms). The all-atom clashscore for this structure is 2.

All (18) close contacts within the same asymmetric unit are listed below, sorted by their clash magnitude.

Atom-1	Atom-2	Interatomic distance (Å)	Clash overlap (Å)
1:C:60[B]:GLU:OE2	3:C:401:HOH:O	1.80	0.97
1:B:145:ALA:HB1	1:B:182:MET:HG2	1.60	0.83
1:A:175[B]:SER:OG	3:A:661[B]:HOH:O	2.10	0.69
1:B:145:ALA:CB	1:B:182:MET:HG2	2.28	0.64
1:B:26:MET:N	3:B:401:HOH:O	2.32	0.62
1:A:113:THR:O	3:A:402:HOH:O	2.16	0.61
1:A:177:ASN:ND2	3:A:405:HOH:O	2.40	0.54
1:C:239:ASP:OD2	3:C:401:HOH:O	2.18	0.54
1:A:125:LYS:HE3	1:B:235:LYS:O	2.10	0.52
1:B:220:ASN:ND2	3:B:404:HOH:O	2.36	0.45
1:B:201:ASN:ND2	3:B:405:HOH:O	2.37	0.44
1:A:140:LYS:HB2	1:A:143:THR:HG21	2.00	0.44
1:A:182:MET:HG3	1:A:183:ASP:N	2.32	0.43
1:C:110:PRO:HA	1:C:211:TYR:O	2.18	0.43
1:B:110:PRO:HA	1:B:211:TYR:O	2.20	0.42
1:C:139:ALA:O	1:C:162:THR:HA	2.20	0.41
1:A:110:PRO:HA	1:A:211:TYR:O	2.21	0.41
1:A:177:ASN:HB3	3:A:409:HOH:O	2.20	0.40

All (1) symmetry-related close contacts are listed below. The label for Atom-2 includes the symmetry operator and encoded unit-cell translations to be applied.

Atom-1	Atom-2	Interatomic distance (Å)	Clash overlap (Å)
3:A:647:HOH:O	3:C:643:HOH:O[2_747]	2.15	0.05

5.3 Torsion angles [i](#)

5.3.1 Protein backbone [i](#)

There are no protein backbone outliers to report in this entry.

5.3.2 Protein sidechains [i](#)

There are no protein residues with a non-rotameric sidechain to report in this entry.

5.3.3 RNA [i](#)

There are no RNA molecules in this entry.

5.4 Non-standard residues in protein, DNA, RNA chains [i](#)

There are no non-standard protein/DNA/RNA residues in this entry.

5.5 Carbohydrates [i](#)

There are no monosaccharides in this entry.

5.6 Ligand geometry [i](#)

3 ligands are modelled in this entry.

In the following table, the Counts columns list the number of bonds (or angles) for which Mogul statistics could be retrieved, the number of bonds (or angles) that are observed in the model and the number of bonds (or angles) that are defined in the Chemical Component Dictionary. The Link column lists molecule types, if any, to which the group is linked. The Z score for a bond length (or angle) is the number of standard deviations the observed value is removed from the expected value. A bond length (or angle) with $|Z| > 2$ is considered an outlier worth inspection. RMSZ is the root-mean-square of all Z scores of the bond lengths (or angles).

Mol	Type	Chain	Res	Link	Bond lengths			Bond angles		
					Counts	RMSZ	$\# Z > 2$	Counts	RMSZ	$\# Z > 2$
2	ASN	B	301	-	6,7,8	0.69	0	5,8,10	0.72	0
2	ASN	C	301	-	5,8,8	0.50	0	5,10,10	0.72	0
2	ASN	A	301	-	6,7,8	0.89	0	5,8,10	0.35	0

In the following table, the Chirals column lists the number of chiral outliers, the number of chiral centers analysed, the number of these observed in the model and the number defined in the Chemical Component Dictionary. Similar counts are reported in the Torsion and Rings columns. '-' means no outliers of that kind were identified.

Mol	Type	Chain	Res	Link	Chirals	Torsions	Rings
2	ASN	B	301	-	-	1/5/6/8	-
2	ASN	C	301	-	-	0/4/8/8	-
2	ASN	A	301	-	-	0/5/6/8	-

There are no bond length outliers.

There are no bond angle outliers.

There are no chirality outliers.

All (1) torsion outliers are listed below:

Mol	Chain	Res	Type	Atoms
2	B	301	ASN	C-CA-CB-CG

There are no ring outliers.

No monomer is involved in short contacts.

5.7 Other polymers [i](#)

There are no such residues in this entry.

5.8 Polymer linkage issues [i](#)

There are no chain breaks in this entry.

6 Fit of model and data

6.1 Protein, DNA and RNA chains

EDS failed to run properly - this section is therefore empty.

6.2 Non-standard residues in protein, DNA, RNA chains

EDS failed to run properly - this section is therefore empty.

6.3 Carbohydrates

EDS failed to run properly - this section is therefore empty.

6.4 Ligands

EDS failed to run properly - this section is therefore empty.

6.5 Other polymers

EDS failed to run properly - this section is therefore empty.