



Full wwPDB X-ray Structure Validation Report ⓘ

Jan 7, 2024 – 05:17 pm GMT

PDB ID : 6FSK
Title : F194Y mutant of the Dye-decolorizing peroxidase (DYP) from *Pleurotus ostreatus*
Authors : Romero, A.; Davo-Siguero, I.
Deposited on : 2018-02-19
Resolution : 1.56 Å (reported)

This is a Full wwPDB X-ray Structure Validation Report for a publicly released PDB entry.

We welcome your comments at validation@mail.wwpdb.org

A user guide is available at

<https://www.wwpdb.org/validation/2017/XrayValidationReportHelp>

with specific help available everywhere you see the ⓘ symbol.

The types of validation reports are described at

<http://www.wwpdb.org/validation/2017/FAQs#types>.

The following versions of software and data (see [references ⓘ](#)) were used in the production of this report:

MolProbity : 4.02b-467
Mogul : 1.8.4, CSD as541be (2020)
Xtriage (Phenix) : 1.13
EDS : 2.36
buster-report : 1.1.7 (2018)
Percentile statistics : 20191225.v01 (using entries in the PDB archive December 25th 2019)
Refmac : 5.8.0158
CCP4 : 7.0.044 (Gargrove)
Ideal geometry (proteins) : Engh & Huber (2001)
Ideal geometry (DNA, RNA) : Parkinson et al. (1996)
Validation Pipeline (wwPDB-VP) : 2.36

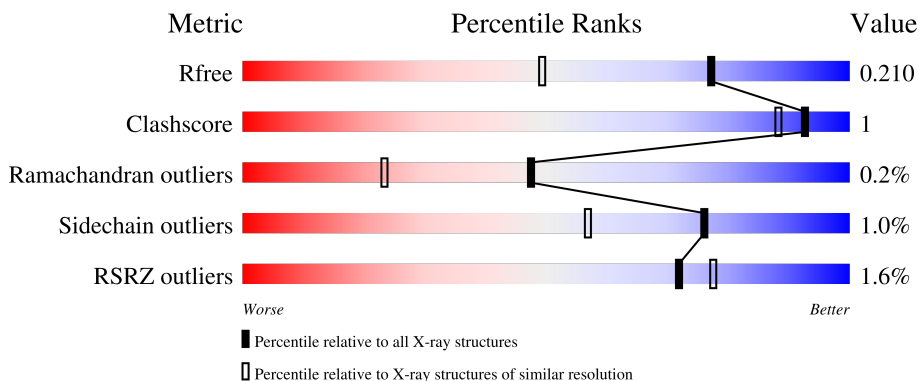
1 Overall quality at a glance

The following experimental techniques were used to determine the structure:

X-RAY DIFFRACTION

The reported resolution of this entry is 1.56 Å.

Percentile scores (ranging between 0-100) for global validation metrics of the entry are shown in the following graphic. The table shows the number of entries on which the scores are based.



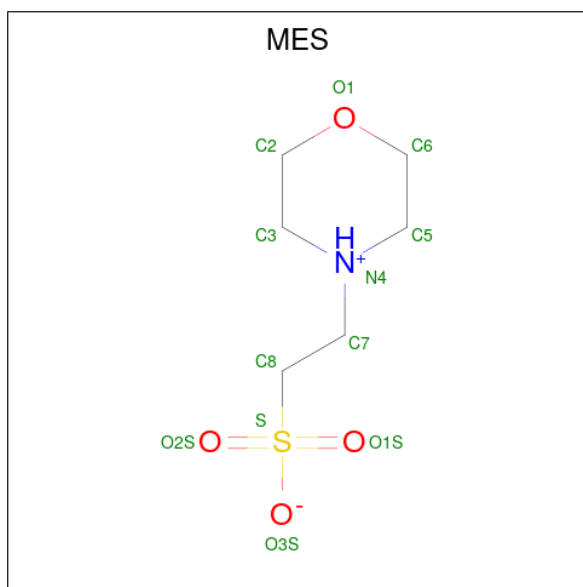
Metric	Whole archive (#Entries)	Similar resolution (#Entries, resolution range(Å))
R_{free}	130704	1483 (1.56-1.56)
Clashscore	141614	1529 (1.56-1.56)
Ramachandran outliers	138981	1498 (1.56-1.56)
Sidechain outliers	138945	1495 (1.56-1.56)
RSRZ outliers	127900	1465 (1.56-1.56)

The table below summarises the geometric issues observed across the polymeric chains and their fit to the electron density. The red, orange, yellow and green segments of the lower bar indicate the fraction of residues that contain outliers for ≥ 3 , 2, 1 and 0 types of geometric quality criteria respectively. A grey segment represents the fraction of residues that are not modelled. The numeric value for each fraction is indicated below the corresponding segment, with a dot representing fractions $\leq 5\%$. The upper red bar (where present) indicates the fraction of residues that have poor fit to the electron density. The numeric value is given above the bar.

Mol	Chain	Length	Quality of chain
1	A	484	
1	B	484	

Mol	Chain	Residues	Atoms				ZeroOcc	AltConf	
2	A	1	Total	C	Fe	N	O	0	0
			43	34	1	4	4		
2	B	1	Total	C	Fe	N	O	0	0
			43	34	1	4	4		

- Molecule 3 is 2-(N-MORPHOLINO)-ETHANESULFONIC ACID (three-letter code: MES) (formula: C₆H₁₃NO₄S).



Mol	Chain	Residues	Atoms					ZeroOcc	AltConf
3	A	1	Total	C	N	O	S	0	0
			12	6	1	4	1		

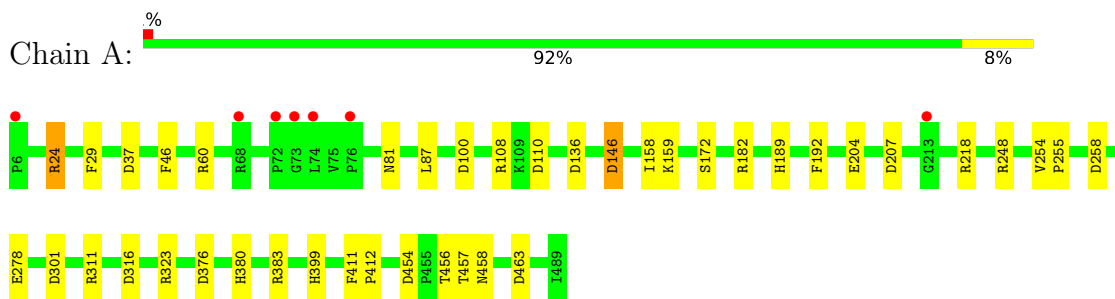
- Molecule 4 is water.

Mol	Chain	Residues	Atoms		ZeroOcc	AltConf
4	A	602	Total	O	0	0
			602	602		
4	B	517	Total	O	0	0
			517	517		

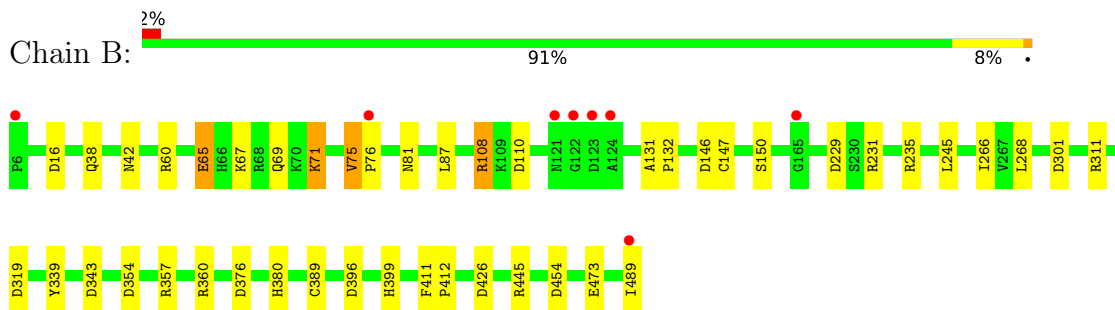
3 Residue-property plots [i](#)

These plots are drawn for all protein, RNA, DNA and oligosaccharide chains in the entry. The first graphic for a chain summarises the proportions of the various outlier classes displayed in the second graphic. The second graphic shows the sequence view annotated by issues in geometry and electron density. Residues are color-coded according to the number of geometric quality criteria for which they contain at least one outlier: green = 0, yellow = 1, orange = 2 and red = 3 or more. A red dot above a residue indicates a poor fit to the electron density ($RSRZ > 2$). Stretches of 2 or more consecutive residues without any outlier are shown as a green connector. Residues present in the sample, but not in the model, are shown in grey.

- Molecule 1: DyP-type peroxidase



- Molecule 1: DyP-type peroxidase



4 Data and refinement statistics

Property	Value	Source
Space group	P 21 21 21	Depositor
Cell constants a, b, c, α , β , γ	62.72Å 117.58Å 140.43Å 90.00° 90.00° 90.00°	Depositor
Resolution (Å)	70.22 – 1.56 70.22 – 1.56	Depositor EDS
% Data completeness (in resolution range)	97.0 (70.22-1.56) 97.1 (70.22-1.56)	Depositor EDS
R_{merge}	0.07	Depositor
R_{sym}	(Not available)	Depositor
$\langle I/\sigma(I) \rangle$ ¹	2.20 (at 1.55Å)	Xtrriage
Refinement program	REFMAC 5.8.0155	Depositor
R, R_{free}	0.162 , 0.199 0.176 , 0.210	Depositor DCC
R_{free} test set	7254 reflections (5.01%)	wwPDB-VP
Wilson B-factor (Å ²)	16.3	Xtrriage
Anisotropy	0.134	Xtrriage
Bulk solvent k_{sol} (e/Å ³), B_{sol} (Å ²)	0.34 , 42.8	EDS
L-test for twinning ²	$\langle L \rangle = 0.48$, $\langle L^2 \rangle = 0.32$	Xtrriage
Estimated twinning fraction	No twinning to report.	Xtrriage
F_o, F_c correlation	0.96	EDS
Total number of atoms	8701	wwPDB-VP
Average B, all atoms (Å ²)	19.0	wwPDB-VP

Xtrriage's analysis on translational NCS is as follows: *The largest off-origin peak in the Patterson function is 4.34% of the height of the origin peak. No significant pseudotranslation is detected.*

¹Intensities estimated from amplitudes.

²Theoretical values of $\langle |L| \rangle$, $\langle L^2 \rangle$ for acentric reflections are 0.5, 0.333 respectively for untwinned datasets, and 0.375, 0.2 for perfectly twinned datasets.

5 Model quality i

5.1 Standard geometry i

Bond lengths and bond angles in the following residue types are not validated in this section: HEM, MES, CSO

The Z score for a bond length (or angle) is the number of standard deviations the observed value is removed from the expected value. A bond length (or angle) with $|Z| > 5$ is considered an outlier worth inspection. RMSZ is the root-mean-square of all Z scores of the bond lengths (or angles).

Mol	Chain	Bond lengths		Bond angles	
		RMSZ	# Z >5	RMSZ	# Z >5
1	A	1.05	2/3855 (0.1%)	1.11	20/5228 (0.4%)
1	B	1.24	5/3827 (0.1%)	1.19	26/5196 (0.5%)
All	All	1.15	7/7682 (0.1%)	1.15	46/10424 (0.4%)

Chiral center outliers are detected by calculating the chiral volume of a chiral center and verifying if the center is modelled as a planar moiety or with the opposite hand. A planarity outlier is detected by checking planarity of atoms in a peptide group, atoms in a mainchain group or atoms of a sidechain that are expected to be planar.

Mol	Chain	#Chirality outliers	#Planarity outliers
1	B	0	4

All (7) bond length outliers are listed below:

Mol	Chain	Res	Type	Atoms	Z	Observed(Å)	Ideal(Å)
1	B	75	VAL	C-N	-43.54	0.51	1.34
1	B	65	GLU	C-N	-8.70	1.14	1.34
1	B	389	CYS	CB-SG	-6.09	1.71	1.82
1	A	278	GLU	CD-OE1	5.58	1.31	1.25
1	A	204	GLU	CD-OE1	5.41	1.31	1.25
1	B	339	TYR	CG-CD2	-5.39	1.32	1.39
1	B	473	GLU	CD-OE1	5.20	1.31	1.25

All (46) bond angle outliers are listed below:

Mol	Chain	Res	Type	Atoms	Z	Observed(°)	Ideal(°)
1	B	75	VAL	C-N-CD	-20.00	76.61	120.60
1	B	75	VAL	O-C-N	-16.08	90.55	121.10
1	B	65	GLU	O-C-N	-15.08	98.57	122.70
1	B	75	VAL	CA-C-N	11.79	150.11	117.10

Continued on next page...

Continued from previous page...

Mol	Chain	Res	Type	Atoms	Z	Observed(°)	Ideal(°)
1	B	75	VAL	C-N-CA	11.41	169.92	122.00
1	B	311	ARG	NE-CZ-NH1	8.97	124.79	120.30
1	B	235	ARG	NE-CZ-NH1	8.80	124.70	120.30
1	B	426	ASP	CB-CG-OD1	8.78	126.20	118.30
1	B	235	ARG	NE-CZ-NH2	-8.50	116.05	120.30
1	A	311	ARG	NE-CZ-NH1	8.06	124.33	120.30
1	B	311	ARG	NE-CZ-NH2	-7.74	116.43	120.30
1	B	231	ARG	NE-CZ-NH2	-7.35	116.62	120.30
1	B	354	ASP	CB-CG-OD1	7.00	124.60	118.30
1	A	207	ASP	CB-CG-OD2	6.75	124.37	118.30
1	A	463	ASP	CB-CG-OD2	-6.60	112.36	118.30
1	B	343	ASP	CB-CG-OD1	6.60	124.24	118.30
1	A	24	ARG	NE-CZ-NH1	6.46	123.53	120.30
1	B	360	ARG	NE-CZ-NH1	6.39	123.49	120.30
1	A	258	ASP	CB-CG-OD2	-6.33	112.60	118.30
1	A	37	ASP	CB-CG-OD1	6.27	123.94	118.30
1	B	396	ASP	CB-CG-OD2	-6.22	112.70	118.30
1	B	426	ASP	CB-CG-OD2	-6.15	112.77	118.30
1	A	159	LYS	CD-CE-NZ	-6.04	97.80	111.70
1	B	445	ARG	NE-CZ-NH2	-6.04	117.28	120.30
1	A	323	ARG	NE-CZ-NH2	-5.92	117.34	120.30
1	B	357	ARG	NE-CZ-NH2	5.88	123.24	120.30
1	A	301	ASP	CB-CG-OD2	-5.76	113.11	118.30
1	B	229	ASP	CB-CG-OD1	5.70	123.43	118.30
1	B	319	ASP	CB-CG-OD1	5.69	123.42	118.30
1	B	301	ASP	CB-CG-OD2	-5.59	113.27	118.30
1	A	258	ASP	CB-CG-OD1	5.54	123.28	118.30
1	B	396	ASP	CB-CG-OD1	5.52	123.27	118.30
1	A	248	ARG	NE-CZ-NH2	-5.50	117.55	120.30
1	A	136	ASP	CB-CG-OD1	5.39	123.15	118.30
1	A	383	ARG	NE-CZ-NH2	-5.29	117.65	120.30
1	A	29	PHE	CB-CG-CD1	-5.25	117.12	120.80
1	A	60	ARG	NE-CZ-NH2	-5.24	117.68	120.30
1	B	108[A]	ARG	NE-CZ-NH2	-5.23	117.68	120.30
1	B	108[B]	ARG	NE-CZ-NH2	-5.23	117.68	120.30
1	A	218	ARG	NE-CZ-NH1	5.22	122.91	120.30
1	A	316	ASP	CB-CG-OD1	5.22	123.00	118.30
1	B	60	ARG	NE-CZ-NH1	5.21	122.90	120.30
1	A	458	ASN	CB-CA-C	-5.09	100.21	110.40
1	B	16	ASP	CB-CG-OD2	-5.08	113.73	118.30
1	A	100	ASP	CB-CG-OD1	5.04	122.84	118.30
1	A	192	PHE	CB-CG-CD1	5.02	124.31	120.80

There are no chirality outliers.

All (4) planarity outliers are listed below:

Mol	Chain	Res	Type	Group
1	B	65	GLU	Mainchain
1	B	67	LYS	Peptide
1	B	71	LYS	Peptide
1	B	75	VAL	Peptide

5.2 Too-close contacts [i](#)

In the following table, the Non-H and H(model) columns list the number of non-hydrogen atoms and hydrogen atoms in the chain respectively. The H(added) column lists the number of hydrogen atoms added and optimized by MolProbity. The Clashes column lists the number of clashes within the asymmetric unit, whereas Symm-Clashes lists symmetry-related clashes.

Mol	Chain	Non-H	H(model)	H(added)	Clashes	Symm-Clashes
1	A	3756	0	3669	12	0
1	B	3728	0	3599	10	0
2	A	43	0	30	0	0
2	B	43	0	30	0	0
3	A	12	0	13	0	0
4	A	602	0	0	1	1
4	B	517	0	0	1	1
All	All	8701	0	7341	22	2

The all-atom clashscore is defined as the number of clashes found per 1000 atoms (including hydrogen atoms). The all-atom clashscore for this structure is 1.

All (22) close contacts within the same asymmetric unit are listed below, sorted by their clash magnitude.

Atom-1	Atom-2	Interatomic distance (Å)	Clash overlap (Å)
1:A:24:ARG:NH2	4:A:601:HOH:O	2.17	0.76
1:B:376:ASP:OD2	1:B:380:HIS:HE1	1.75	0.69
1:B:110:ASP:OD2	1:B:399:HIS:HD2	1.77	0.68
1:A:110:ASP:OD2	1:A:399:HIS:HD2	1.79	0.66
1:A:454:ASP:OD2	1:A:457:THR:HG21	1.99	0.62
1:B:38:GLN:HE21	1:B:42:ASN:HD21	1.51	0.57
1:A:454:ASP:OD2	1:A:457:THR:CG2	2.56	0.54
1:A:376:ASP:OD2	1:A:380:HIS:HE1	1.91	0.53
1:A:411:PHE:CD1	1:A:412:PRO:HA	2.45	0.51
1:B:454:ASP:OD1	4:B:601:HOH:O	2.20	0.48

Continued on next page...

Continued from previous page...

Atom-1	Atom-2	Interatomic distance (Å)	Clash overlap (Å)
1:A:24:ARG:NH1	1:A:146:ASP:O	2.49	0.45
1:B:266:ILE:HG22	1:B:268:LEU:HG	1.98	0.44
1:B:411:PHE:CD1	1:B:412:PRO:HA	2.53	0.43
1:A:182:ARG:HD3	1:A:189:HIS:O	2.17	0.43
1:A:46:PHE:CD1	1:A:158:ILE:HD12	2.54	0.43
1:B:131:ALA:HB3	1:B:132:PRO:HD3	2.02	0.42
1:B:245:LEU:HD23	1:B:245:LEU:C	2.40	0.41
1:A:87:LEU:HD11	1:A:108:ARG:HH21	1.85	0.41
1:B:110:ASP:OD2	1:B:399:HIS:CD2	2.66	0.41
1:A:456:THR:O	1:A:456:THR:HG22	2.20	0.41
1:A:254:VAL:HB	1:A:255:PRO:HD3	2.03	0.41
1:B:87:LEU:HD11	1:B:108[A]:ARG:HH21	1.86	0.40

All (2) symmetry-related close contacts are listed below. The label for Atom-2 includes the symmetry operator and encoded unit-cell translations to be applied.

Atom-1	Atom-2	Interatomic distance (Å)	Clash overlap (Å)
4:B:738:HOH:O	4:B:819:HOH:O[4_555]	2.15	0.05
4:A:609:HOH:O	4:A:666:HOH:O[4_545]	2.19	0.01

5.3 Torsion angles [i](#)

5.3.1 Protein backbone [i](#)

In the following table, the Percentiles column shows the percent Ramachandran outliers of the chain as a percentile score with respect to all X-ray entries followed by that with respect to entries of similar resolution.

The Analysed column shows the number of residues for which the backbone conformation was analysed, and the total number of residues.

Mol	Chain	Analysed	Favoured	Allowed	Outliers	Percentiles	
1	A	482/484 (100%)	475 (98%)	7 (2%)	0	100	100
1	B	482/484 (100%)	467 (97%)	13 (3%)	2 (0%)	34	14
All	All	964/968 (100%)	942 (98%)	20 (2%)	2 (0%)	47	23

All (2) Ramachandran outliers are listed below:

Mol	Chain	Res	Type
1	B	76	PRO
1	B	71	LYS

5.3.2 Protein sidechains [i](#)

In the following table, the Percentiles column shows the percent sidechain outliers of the chain as a percentile score with respect to all X-ray entries followed by that with respect to entries of similar resolution.

The Analysed column shows the number of residues for which the sidechain conformation was analysed, and the total number of residues.

Mol	Chain	Analysed	Rotameric	Outliers	Percentiles	
1	A	402/401 (100%)	398 (99%)	4 (1%)	76	57
1	B	393/401 (98%)	388 (99%)	5 (1%)	69	44
All	All	795/802 (99%)	786 (99%)	9 (1%)	76	53

All (9) residues with a non-rotameric sidechain are listed below:

Mol	Chain	Res	Type
1	A	81	ASN
1	A	146	ASP
1	A	172[A]	SER
1	A	172[B]	SER
1	B	69	GLN
1	B	81	ASN
1	B	146	ASP
1	B	150	SER
1	B	489	ILE

Sometimes sidechains can be flipped to improve hydrogen bonding and reduce clashes. All (12) such sidechains are listed below:

Mol	Chain	Res	Type
1	A	42	ASN
1	A	49	HIS
1	A	101	ASN
1	A	187	HIS
1	A	208	GLN
1	A	380	HIS
1	A	399	HIS
1	B	42	ASN

Continued on next page...

Continued from previous page...

Mol	Chain	Res	Type
1	B	49	HIS
1	B	90	GLN
1	B	380	HIS
1	B	399	HIS

5.3.3 RNA [i](#)

There are no RNA molecules in this entry.

5.4 Non-standard residues in protein, DNA, RNA chains [i](#)

2 non-standard protein/DNA/RNA residues are modelled in this entry.

In the following table, the Counts columns list the number of bonds (or angles) for which Mogul statistics could be retrieved, the number of bonds (or angles) that are observed in the model and the number of bonds (or angles) that are defined in the Chemical Component Dictionary. The Link column lists molecule types, if any, to which the group is linked. The Z score for a bond length (or angle) is the number of standard deviations the observed value is removed from the expected value. A bond length (or angle) with $|Z| > 2$ is considered an outlier worth inspection. RMSZ is the root-mean-square of all Z scores of the bond lengths (or angles).

Mol	Type	Chain	Res	Link	Bond lengths			Bond angles		
					Counts	RMSZ	$\# Z > 2$	Counts	RMSZ	$\# Z > 2$
1	CSO	A	147	1	3,6,7	0.91	0	0,6,8	-	-
1	CSO	B	147	1	3,6,7	1.73	1 (33%)	0,6,8	-	-

In the following table, the Chirals column lists the number of chiral outliers, the number of chiral centers analysed, the number of these observed in the model and the number defined in the Chemical Component Dictionary. Similar counts are reported in the Torsion and Rings columns. '-' means no outliers of that kind were identified.

Mol	Type	Chain	Res	Link	Chirals	Torsions	Rings
1	CSO	A	147	1	-	0/1/5/7	-
1	CSO	B	147	1	-	0/1/5/7	-

All (1) bond length outliers are listed below:

Mol	Chain	Res	Type	Atoms	Z	Observed(Å)	Ideal(Å)
1	B	147	CSO	CB-CA	2.04	1.58	1.53

There are no bond angle outliers.

There are no chirality outliers.

There are no torsion outliers.

There are no ring outliers.

No monomer is involved in short contacts.

5.5 Carbohydrates [i](#)

There are no monosaccharides in this entry.

5.6 Ligand geometry [i](#)

3 ligands are modelled in this entry.

In the following table, the Counts columns list the number of bonds (or angles) for which Mogul statistics could be retrieved, the number of bonds (or angles) that are observed in the model and the number of bonds (or angles) that are defined in the Chemical Component Dictionary. The Link column lists molecule types, if any, to which the group is linked. The Z score for a bond length (or angle) is the number of standard deviations the observed value is removed from the expected value. A bond length (or angle) with $|Z| > 2$ is considered an outlier worth inspection. RMSZ is the root-mean-square of all Z scores of the bond lengths (or angles).

Mol	Type	Chain	Res	Link	Bond lengths			Bond angles		
					Counts	RMSZ	# Z > 2	Counts	RMSZ	# Z > 2
2	HEM	B	501	1	41,50,50	1.37	5 (12%)	45,82,82	2.03	11 (24%)
3	MES	A	502	-	12,12,12	1.39	2 (16%)	14,16,16	1.66	4 (28%)
2	HEM	A	501	1	41,50,50	1.50	10 (24%)	45,82,82	1.86	10 (22%)

In the following table, the Chirals column lists the number of chiral outliers, the number of chiral centers analysed, the number of these observed in the model and the number defined in the Chemical Component Dictionary. Similar counts are reported in the Torsion and Rings columns. '-' means no outliers of that kind were identified.

Mol	Type	Chain	Res	Link	Chirals	Torsions	Rings
2	HEM	B	501	1	-	4/12/54/54	-
3	MES	A	502	-	-	0/6/14/14	0/1/1/1
2	HEM	A	501	1	-	4/12/54/54	-

All (17) bond length outliers are listed below:

Mol	Chain	Res	Type	Atoms	Z	Observed(Å)	Ideal(Å)
2	B	501	HEM	C1D-C2D	4.37	1.53	1.44

Continued on next page...

Continued from previous page...

Mol	Chain	Res	Type	Atoms	Z	Observed(Å)	Ideal(Å)
2	A	501	HEM	C4D-ND	-3.51	1.34	1.40
3	A	502	MES	O2S-S	2.94	1.53	1.45
3	A	502	MES	C8-S	-2.89	1.73	1.77
2	A	501	HEM	C1D-C2D	2.81	1.50	1.44
2	A	501	HEM	CHA-C4D	2.79	1.42	1.35
2	A	501	HEM	O2D-CGD	-2.64	1.21	1.30
2	B	501	HEM	C1B-NB	-2.59	1.35	1.40
2	A	501	HEM	C1B-C2B	-2.58	1.39	1.44
2	B	501	HEM	CHB-C1B	2.57	1.41	1.35
2	A	501	HEM	C1B-NB	-2.52	1.36	1.40
2	A	501	HEM	C3C-C2C	-2.50	1.36	1.40
2	A	501	HEM	C1D-ND	-2.41	1.33	1.38
2	B	501	HEM	O2D-CGD	-2.14	1.23	1.30
2	B	501	HEM	CHA-C4D	2.13	1.40	1.35
2	A	501	HEM	FE-NB	2.11	2.07	1.96
2	A	501	HEM	CHB-C1B	2.05	1.40	1.35

All (25) bond angle outliers are listed below:

Mol	Chain	Res	Type	Atoms	Z	Observed(°)	Ideal(°)
2	B	501	HEM	C2C-C3C-C4C	-6.30	102.50	106.90
2	A	501	HEM	C4B-CHC-C1C	5.53	129.85	122.56
2	B	501	HEM	C4A-C3A-C2A	-5.31	103.30	107.00
2	B	501	HEM	C1B-NB-C4B	4.19	109.40	105.07
2	A	501	HEM	C3B-C2B-C1B	3.76	109.27	106.49
3	A	502	MES	O1-C6-C5	-3.72	103.60	111.80
2	B	501	HEM	CBA-CAA-C2A	3.58	118.73	112.62
2	A	501	HEM	CHD-C1D-ND	3.52	128.25	124.43
2	A	501	HEM	C4B-C3B-C2B	-3.45	104.38	107.11
2	A	501	HEM	C1D-C2D-C3D	-3.33	103.45	106.96
2	A	501	HEM	CHD-C1D-C2D	-3.14	120.07	124.98
2	B	501	HEM	CHD-C1D-ND	3.03	127.73	124.43
2	A	501	HEM	O1D-CGD-CBD	-2.98	113.52	123.08
2	A	501	HEM	CBA-CAA-C2A	2.96	117.66	112.62
2	B	501	HEM	CHC-C4B-NB	2.93	127.61	124.43
2	B	501	HEM	O1D-CGD-CBD	-2.77	114.19	123.08
2	B	501	HEM	C4D-ND-C1D	2.63	107.79	105.07
2	A	501	HEM	CMD-C2D-C1D	2.54	128.90	125.04
2	B	501	HEM	CHA-C4D-ND	2.50	127.47	124.38
2	B	501	HEM	C4B-CHC-C1C	2.22	125.49	122.56
2	B	501	HEM	O2D-CGD-CBD	2.20	121.09	114.03
3	A	502	MES	O3S-S-C8	2.11	109.19	105.77

Continued on next page...

Continued from previous page...

Mol	Chain	Res	Type	Atoms	Z	Observed(°)	Ideal(°)
3	A	502	MES	C7-N4-C3	-2.08	105.92	111.23
2	A	501	HEM	O2D-CGD-CBD	2.03	120.56	114.03
3	A	502	MES	O2S-S-C8	2.02	109.34	106.92

There are no chirality outliers.

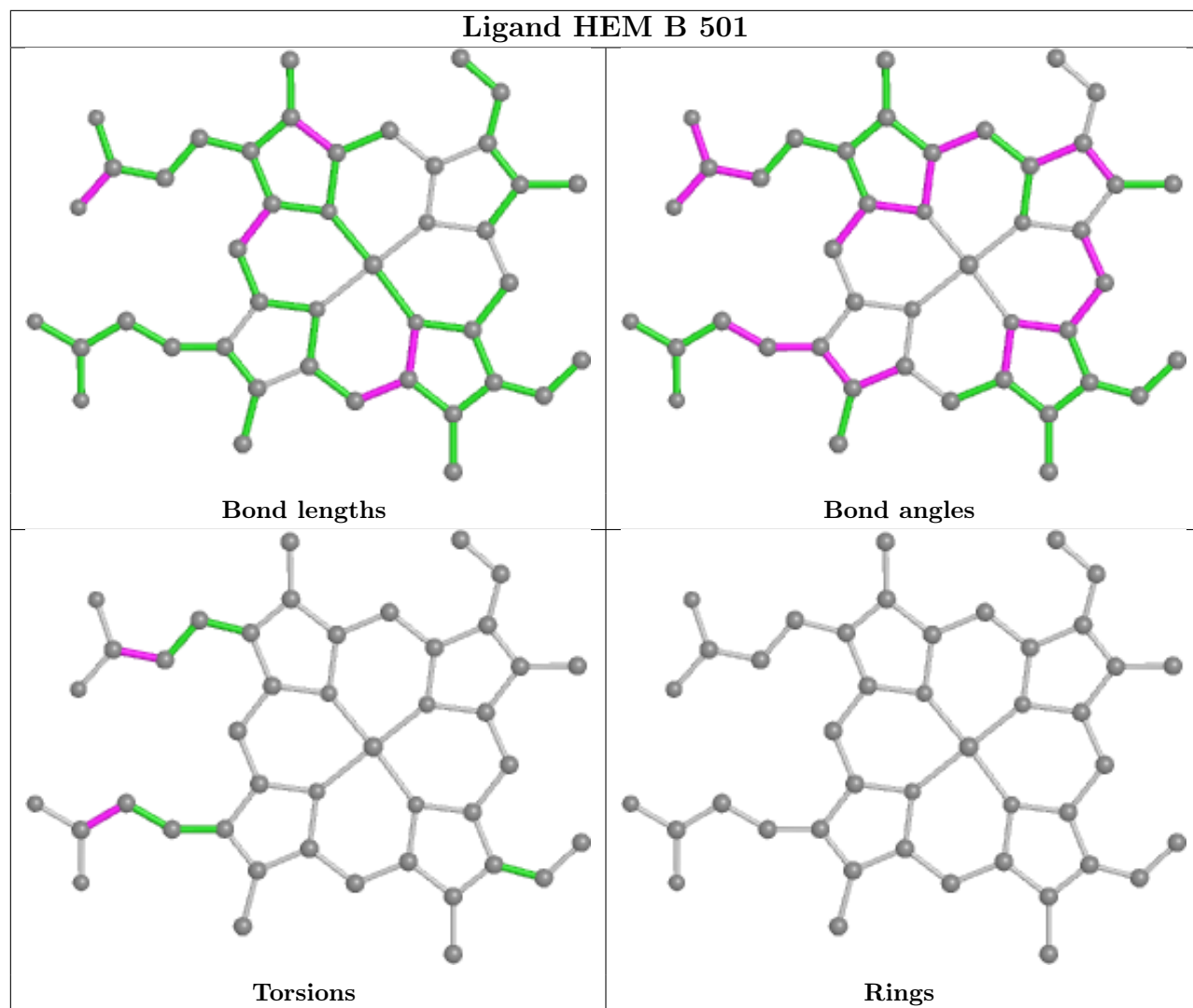
All (8) torsion outliers are listed below:

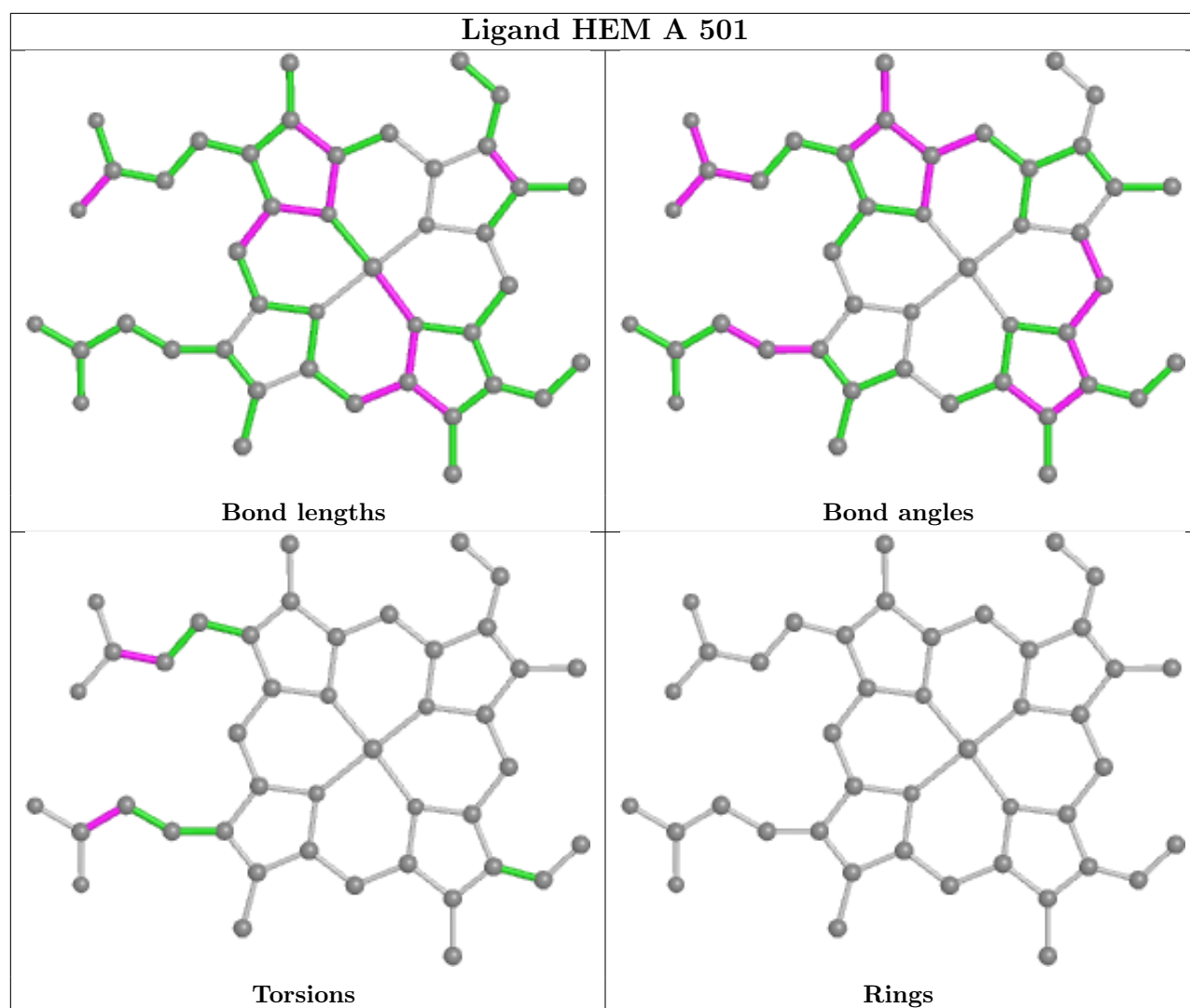
Mol	Chain	Res	Type	Atoms
2	A	501	HEM	CAD-CBD-CGD-O1D
2	A	501	HEM	CAA-CBA-CGA-O1A
2	B	501	HEM	CAA-CBA-CGA-O2A
2	A	501	HEM	CAA-CBA-CGA-O2A
2	B	501	HEM	CAD-CBD-CGD-O1D
2	B	501	HEM	CAA-CBA-CGA-O1A
2	B	501	HEM	CAD-CBD-CGD-O2D
2	A	501	HEM	CAD-CBD-CGD-O2D

There are no ring outliers.

No monomer is involved in short contacts.

The following is a two-dimensional graphical depiction of Mogul quality analysis of bond lengths, bond angles, torsion angles, and ring geometry for all instances of the Ligand of Interest. In addition, ligands with molecular weight > 250 and outliers as shown on the validation Tables will also be included. For torsion angles, if less than 5% of the Mogul distribution of torsion angles is within 10 degrees of the torsion angle in question, then that torsion angle is considered an outlier. Any bond that is central to one or more torsion angles identified as an outlier by Mogul will be highlighted in the graph. For rings, the root-mean-square deviation (RMSD) between the ring in question and similar rings identified by Mogul is calculated over all ring torsion angles. If the average RMSD is greater than 60 degrees and the minimal RMSD between the ring in question and any Mogul-identified rings is also greater than 60 degrees, then that ring is considered an outlier. The outliers are highlighted in purple. The color gray indicates Mogul did not find sufficient equivalents in the CSD to analyse the geometry.





5.7 Other polymers [i](#)

There are no such residues in this entry.

5.8 Polymer linkage issues [i](#)

The following chains have linkage breaks:

Mol	Chain	Number of breaks
1	B	2

All chain breaks are listed below:

Model	Chain	Residue-1	Atom-1	Residue-2	Atom-2	Distance (Å)
1	B	65:GLU	C	66:HIS	N	1.14

Continued on next page...

Continued from previous page...

Model	Chain	Residue-1	Atom-1	Residue-2	Atom-2	Distance (Å)
1	B	75:VAL	C	76:PRO	N	0.51

6 Fit of model and data [i](#)

6.1 Protein, DNA and RNA chains [i](#)

In the following table, the column labelled ‘#RSRZ> 2’ contains the number (and percentage) of RSRZ outliers, followed by percent RSRZ outliers for the chain as percentile scores relative to all X-ray entries and entries of similar resolution. The OWAB column contains the minimum, median, 95th percentile and maximum values of the occupancy-weighted average B-factor per residue. The column labelled ‘Q< 0.9’ lists the number of (and percentage) of residues with an average occupancy less than 0.9.

Mol	Chain	Analysed	<RSRZ>	#RSRZ>2	OWAB(Å ²)	Q<0.9
1	A	483/484 (99%)	-0.20	7 (1%) 75 80	9, 15, 31, 48	0
1	B	473/484 (97%)	-0.19	8 (1%) 70 75	10, 17, 35, 69	0
All	All	956/968 (98%)	-0.19	15 (1%) 72 77	9, 16, 33, 69	0

All (15) RSRZ outliers are listed below:

Mol	Chain	Res	Type	RSRZ
1	B	122	GLY	5.5
1	B	121	ASN	5.2
1	B	124	ALA	4.7
1	A	68	ARG	3.1
1	A	213	GLY	2.8
1	B	123	ASP	2.7
1	A	76	PRO	2.6
1	B	6	PRO	2.5
1	A	74	LEU	2.5
1	B	489	ILE	2.5
1	A	6	PRO	2.4
1	A	72	PRO	2.4
1	B	76	PRO	2.2
1	B	165	GLY	2.1
1	A	73	GLY	2.0

6.2 Non-standard residues in protein, DNA, RNA chains [i](#)

In the following table, the Atoms column lists the number of modelled atoms in the group and the number defined in the chemical component dictionary. The B-factors column lists the minimum, median, 95th percentile and maximum values of B factors of atoms in the group. The column labelled ‘Q< 0.9’ lists the number of atoms with occupancy less than 0.9.

Mol	Type	Chain	Res	Atoms	RSCC	RSR	B-factors(\AA^2)	Q<0.9
1	CSO	B	147	7/8	0.96	0.07	17,19,27,29	0
1	CSO	A	147	7/8	0.97	0.06	16,17,28,29	0

6.3 Carbohydrates [i](#)

There are no monosaccharides in this entry.

6.4 Ligands [i](#)

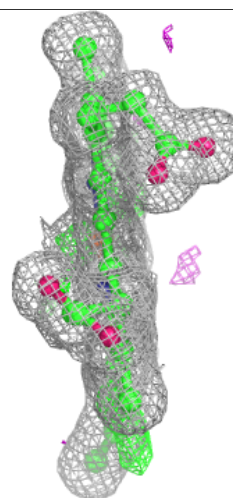
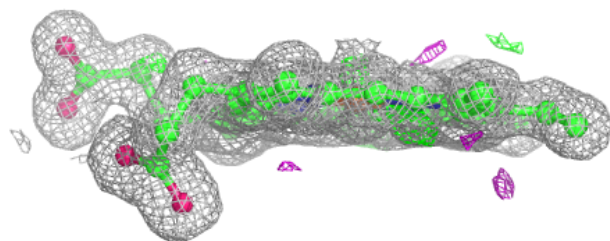
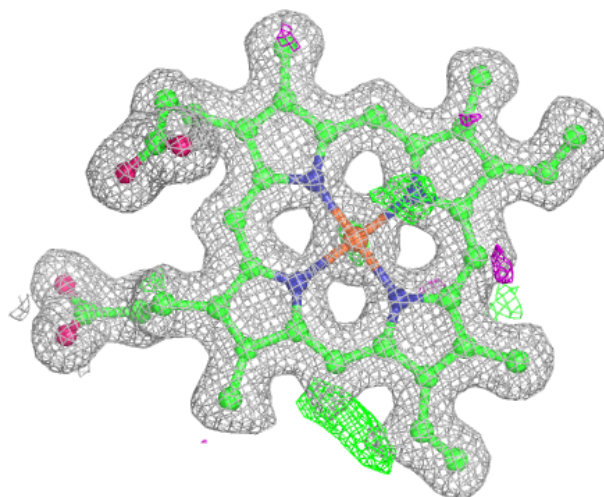
In the following table, the Atoms column lists the number of modelled atoms in the group and the number defined in the chemical component dictionary. The B-factors column lists the minimum, median, 95th percentile and maximum values of B factors of atoms in the group. The column labelled 'Q< 0.9' lists the number of atoms with occupancy less than 0.9.

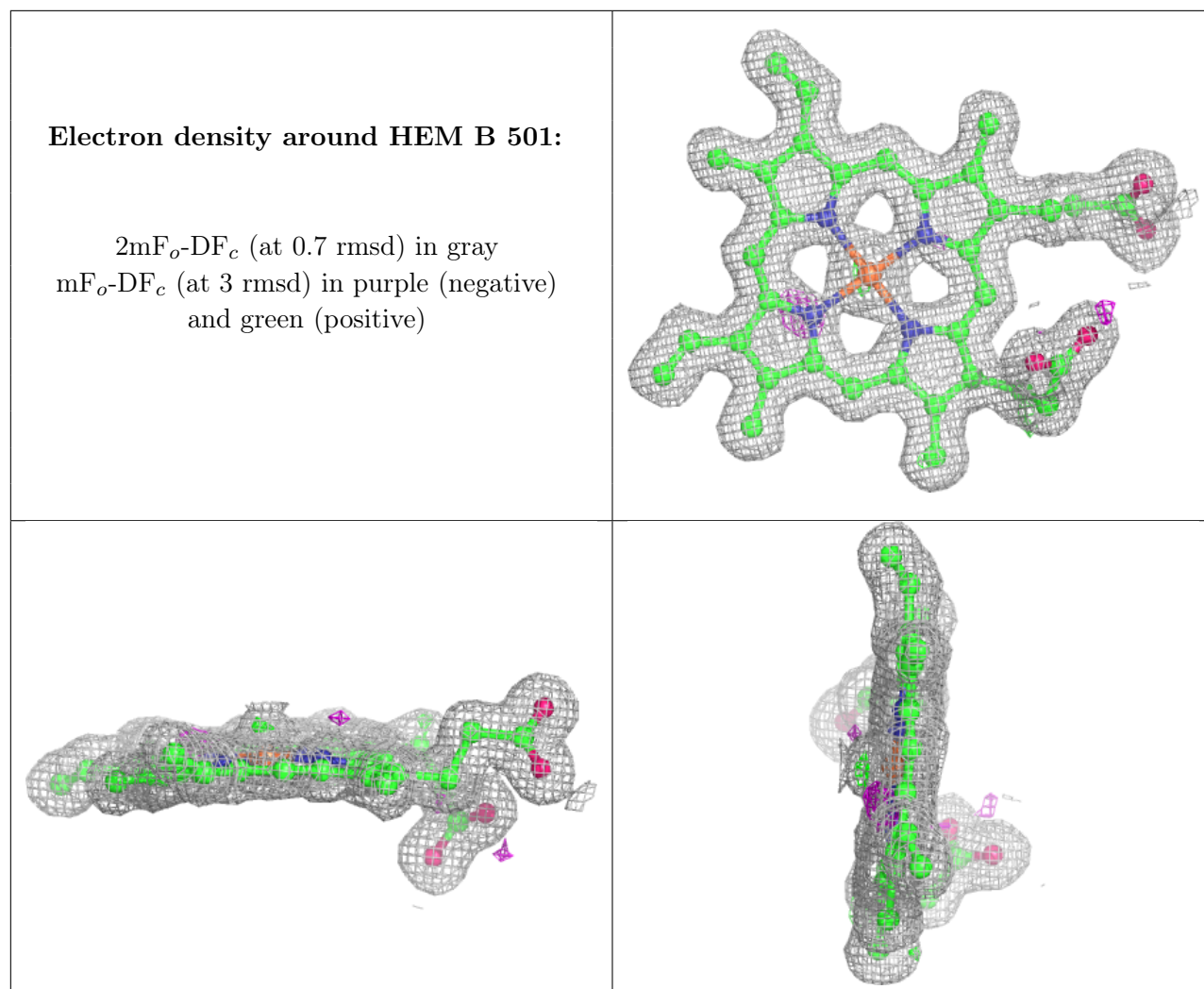
Mol	Type	Chain	Res	Atoms	RSCC	RSR	B-factors(\AA^2)	Q<0.9
2	HEM	A	501	43/43	0.98	0.08	7,9,11,13	0
2	HEM	B	501	43/43	0.98	0.07	10,11,13,16	0
3	MES	A	502	12/12	0.98	0.07	19,22,25,25	0

The following is a graphical depiction of the model fit to experimental electron density of all instances of the Ligand of Interest. In addition, ligands with molecular weight > 250 and outliers as shown on the geometry validation Tables will also be included. Each fit is shown from different orientation to approximate a three-dimensional view.

Electron density around HEM A 501:

$2mF_o-DF_c$ (at 0.7 rmsd) in gray
 mF_o-DF_c (at 3 rmsd) in purple (negative)
and green (positive)





6.5 Other polymers [\(i\)](#)

There are no such residues in this entry.