



# Full wwPDB X-ray Structure Validation Report ⓘ

Nov 14, 2022 – 10:53 AM EST

PDB ID : 7FQZ  
Title : PanDDA analysis group deposition – Crystal structure of PTP1B in complex with FMOMB000203a  
Authors : Mehlman, T.; Biel, J.; Azeem, S.M.; Nelson, E.R.; Hossain, S.; Dunnett, L.E.; Paterson, N.G.; Douangamath, A.; Talon, R.; Axford, D.; Orins, H.; von Delft, F.; Keedy, D.A.  
Deposited on : 2022-10-20  
Resolution : 2.09 Å(reported)

This is a Full wwPDB X-ray Structure Validation Report for a publicly released PDB entry.

We welcome your comments at [validation@mail.wwpdb.org](mailto:validation@mail.wwpdb.org)

A user guide is available at

<https://www.wwpdb.org/validation/2017/XrayValidationReportHelp>

with specific help available everywhere you see the ⓘ symbol.

The types of validation reports are described at

<http://www.wwpdb.org/validation/2017/FAQs#types>.

---

The following versions of software and data (see [references](#) ①) were used in the production of this report:

MolProbity : 4.02b-467  
Mogul : 1.8.5 (274361), CSD as541be (2020)  
Xtrriage (Phenix) : 1.13  
EDS : 2.31.2  
buster-report : 1.1.7 (2018)  
Percentile statistics : 20191225.v01 (using entries in the PDB archive December 25th 2019)  
Refmac : 5.8.0158  
CCP4 : 7.0.044 (Gargrove)  
Ideal geometry (proteins) : Engh & Huber (2001)  
Ideal geometry (DNA, RNA) : Parkinson et al. (1996)  
Validation Pipeline (wwPDB-VP) : 2.31.2

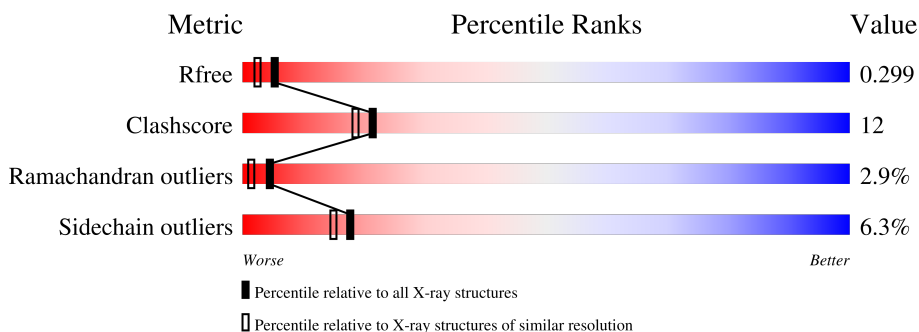
# 1 Overall quality at a glance i

The following experimental techniques were used to determine the structure:

*X-RAY DIFFRACTION*

The reported resolution of this entry is 2.09 Å.

Percentile scores (ranging between 0-100) for global validation metrics of the entry are shown in the following graphic. The table shows the number of entries on which the scores are based.



Metric	Whole archive (#Entries)	Similar resolution (#Entries, resolution range(Å))
$R_{free}$	130704	5197 (2.10-2.10)
Clashscore	141614	5710 (2.10-2.10)
Ramachandran outliers	138981	5647 (2.10-2.10)
Sidechain outliers	138945	5648 (2.10-2.10)

The table below summarises the geometric issues observed across the polymeric chains and their fit to the electron density. The red, orange, yellow and green segments of the lower bar indicate the fraction of residues that contain outliers for  $\geq 3$ , 2, 1 and 0 types of geometric quality criteria respectively. A grey segment represents the fraction of residues that are not modelled. The numeric value for each fraction is indicated below the corresponding segment, with a dot representing fractions  $\leq 5\%$

Mol	Chain	Length	Quality of chain
1	A	321	 66% 17% •• 12%

## 2 Entry composition [i](#)

There are 4 unique types of molecules in this entry. The entry contains 5003 atoms, of which 2404 are hydrogens and 0 are deuteriums.

In the tables below, the ZeroOcc column contains the number of atoms modelled with zero occupancy, the AltConf column contains the number of residues with at least one atom in alternate conformation and the Trace column contains the number of residues modelled with at most 2 atoms.

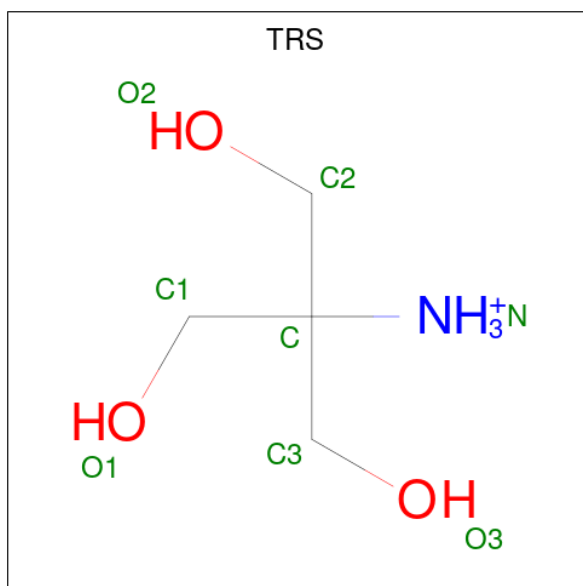
- Molecule 1 is a protein called Tyrosine-protein phosphatase non-receptor type 1.

Mol	Chain	Residues	Atoms					ZeroOcc	AltConf	Trace	
			Total	C	H	N	O				S
1	A	281	4784	1524	2384	413	447	16	0	13	0

There are 2 discrepancies between the modelled and reference sequences:

Chain	Residue	Modelled	Actual	Comment	Reference
A	32	SER	CYS	engineered mutation	UNP P18031
A	92	VAL	CYS	engineered mutation	UNP P18031

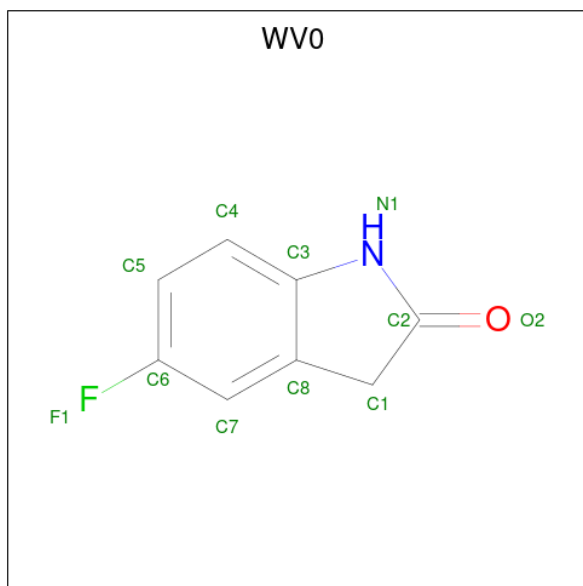
- Molecule 2 is 2-AMINO-2-HYDROXYMETHYL-PROPANE-1,3-DIOL (three-letter code: TRS) (formula:  $C_4H_{12}NO_3$ ).



Mol	Chain	Residues	Atoms					ZeroOcc	AltConf
			Total	C	H	N	O		
2	A	1	20	4	12	1	3	0	0

- Molecule 3 is 5-fluoro-1,3-dihydro-2H-indol-2-one (three-letter code: WV0) (formula:

C<sub>8</sub>H<sub>6</sub>FNO) (labeled as "Ligand of Interest" by depositor).



Mol	Chain	Residues	Atoms					ZeroOcc	AltConf	
			Total	C	F	H	N			O
3	A	1	Total	C	F	H	N	O	0	0
			15	8	1	4	1	1		
3	A	1	Total	C	F	H	N	O	0	0
			15	8	1	4	1	1		

- Molecule 4 is water.

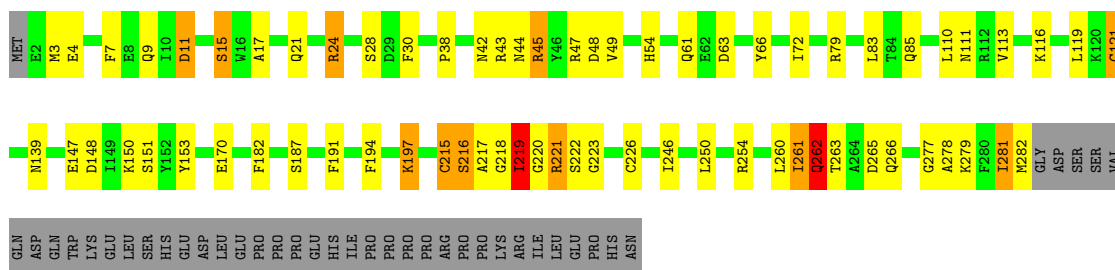
Mol	Chain	Residues	Atoms		ZeroOcc	AltConf
4	A	165	Total	O	0	5
			169	169		

### 3 Residue-property plots [i](#)

These plots are drawn for all protein, RNA, DNA and oligosaccharide chains in the entry. The first graphic for a chain summarises the proportions of the various outlier classes displayed in the second graphic. The second graphic shows the sequence view annotated by issues in geometry. Residues are color-coded according to the number of geometric quality criteria for which they contain at least one outlier: green = 0, yellow = 1, orange = 2 and red = 3 or more. Stretches of 2 or more consecutive residues without any outlier are shown as a green connector. Residues present in the sample, but not in the model, are shown in grey.

- Molecule 1: Tyrosine-protein phosphatase non-receptor type 1

Chain A: 



## 4 Data and refinement statistics

Property	Value	Source
Space group	P 31 2 1	Depositor
Cell constants a, b, c, $\alpha$ , $\beta$ , $\gamma$	89.55Å 89.55Å 106.45Å 90.00° 90.00° 120.00°	Depositor
Resolution (Å)	44.82 – 2.09 44.78 – 2.09	Depositor EDS
% Data completeness (in resolution range)	100.0 (44.82-2.09) 100.0 (44.78-2.09)	Depositor EDS
$R_{merge}$	0.13	Depositor
$R_{sym}$	(Not available)	Depositor
$\langle I/\sigma(I) \rangle$ <sup>1</sup>	1.33 (at 2.08Å)	Xtrriage
Refinement program	REFMAC 5.8.0267	Depositor
R, $R_{free}$	0.167 , 0.208 0.288 , 0.299	Depositor DCC
$R_{free}$ test set	1169 reflections (3.93%)	wwPDB-VP
Wilson B-factor (Å <sup>2</sup> )	43.7	Xtrriage
Anisotropy	0.009	Xtrriage
Bulk solvent $k_{sol}$ (e/Å <sup>3</sup> ), $B_{sol}$ (Å <sup>2</sup> )	0.29 , 62.2	EDS
L-test for twinning <sup>2</sup>	$\langle  L  \rangle = 0.49$ , $\langle L^2 \rangle = 0.33$	Xtrriage
Estimated twinning fraction	0.025 for -h,-k,l	Xtrriage
$F_o, F_c$ correlation	0.88	EDS
Total number of atoms	5003	wwPDB-VP
Average B, all atoms (Å <sup>2</sup> )	50.0	wwPDB-VP

Xtrriage's analysis on translational NCS is as follows: *The largest off-origin peak in the Patterson function is 4.28% of the height of the origin peak. No significant pseudotranslation is detected.*

<sup>1</sup>Intensities estimated from amplitudes.

<sup>2</sup>Theoretical values of  $\langle |L| \rangle$ ,  $\langle L^2 \rangle$  for acentric reflections are 0.5, 0.333 respectively for untwinned datasets, and 0.375, 0.2 for perfectly twinned datasets.

## 5 Model quality [i](#)

### 5.1 Standard geometry [i](#)

Bond lengths and bond angles in the following residue types are not validated in this section: WV0, TRS

The Z score for a bond length (or angle) is the number of standard deviations the observed value is removed from the expected value. A bond length (or angle) with  $|Z| > 5$  is considered an outlier worth inspection. RMSZ is the root-mean-square of all Z scores of the bond lengths (or angles).

Mol	Chain	Bond lengths		Bond angles	
		RMSZ	# Z  >5	RMSZ	# Z  >5
1	A	0.78	1/2453 (0.0%)	0.88	3/3304 (0.1%)

All (1) bond length outliers are listed below:

Mol	Chain	Res	Type	Atoms	Z	Observed(Å)	Ideal(Å)
1	A	147	GLU	CD-OE1	-5.56	1.19	1.25

All (3) bond angle outliers are listed below:

Mol	Chain	Res	Type	Atoms	Z	Observed(°)	Ideal(°)
1	A	121	CYS	N-CA-CB	-7.16	97.71	110.60
1	A	61	GLN	CB-CA-C	5.14	120.68	110.40
1	A	24	ARG	NE-CZ-NH1	5.11	122.85	120.30

There are no chirality outliers.

There are no planarity outliers.

### 5.2 Too-close contacts [i](#)

In the following table, the Non-H and H(model) columns list the number of non-hydrogen atoms and hydrogen atoms in the chain respectively. The H(added) column lists the number of hydrogen atoms added and optimized by MolProbity. The Clashes column lists the number of clashes within the asymmetric unit, whereas Symm-Clashes lists symmetry-related clashes.

Mol	Chain	Non-H	H(model)	H(added)	Clashes	Symm-Clashes
1	A	2400	2384	2367	58	0
2	A	8	12	12	4	0
3	A	22	8	0	1	0
4	A	169	0	0	12	0

*Continued on next page...*



*Continued from previous page...*

Mol	Chain	Non-H	H(model)	H(added)	Clashes	Symm-Clashes
All	All	2599	2404	2379	58	0

The all-atom clashscore is defined as the number of clashes found per 1000 atoms (including hydrogen atoms). The all-atom clashscore for this structure is 12.

All (58) close contacts within the same asymmetric unit are listed below, sorted by their clash magnitude.

Atom-1	Atom-2	Interatomic distance (Å)	Clash overlap (Å)
1:A:48:ASP:HB3	4:A:844:HOH:O	0.88	1.05
1:A:219:ILE:HB	4:A:937:HOH:O	1.60	1.00
1:A:218:GLY:CA	4:A:816:HOH:O	2.28	0.82
1:A:218:GLY:HA2	4:A:816:HOH:O	1.81	0.80
1:A:261:ILE:O	1:A:263:THR:N	2.15	0.79
1:A:215:CYS:SG	1:A:221:ARG:HB2	2.30	0.72
1:A:277:GLY:O	1:A:281:ILE:HG12	1.93	0.68
1:A:218:GLY:O	1:A:220:GLY:N	2.28	0.66
1:A:3:MET:CE	1:A:246[B]:ILE:HD11	2.26	0.66
1:A:221:ARG:O	1:A:223:GLY:N	2.30	0.65
1:A:219:ILE:CG2	4:A:937:HOH:O	2.48	0.62
1:A:216:SER:OG	1:A:219:ILE:HD11	2.00	0.62
1:A:3:MET:HE1	1:A:246[B]:ILE:HD11	1.82	0.59
1:A:260:LEU:O	1:A:262:GLN:N	2.37	0.58
1:A:150:LYS:HE2	3:A:703:WV0:O2	2.02	0.58
1:A:215:CYS:SG	1:A:215:CYS:O	2.62	0.56
1:A:45:ARG:NH2	4:A:801[A]:HOH:O	2.16	0.56
1:A:116:LYS:HE2	1:A:182:PHE:CZ	2.41	0.56
1:A:54:HIS:ND1	2:A:701:TRS:H21	2.22	0.54
1:A:282:MET:HE2	4:A:949:HOH:O	2.08	0.54
1:A:250:LEU:O	1:A:254:ARG:HG3	2.08	0.53
1:A:219:ILE:CB	4:A:937:HOH:O	2.34	0.53
1:A:83:LEU:HD11	1:A:226[B]:CYS:SG	2.49	0.52
1:A:191:PHE:O	1:A:194:PHE:HB3	2.10	0.52
1:A:150:LYS:HB2	1:A:153:TYR:O	2.10	0.51
1:A:28:SER:HB3	1:A:30:PHE:CE2	2.46	0.50
1:A:17:ALA:O	1:A:21:GLN:HG2	2.12	0.49
1:A:260:LEU:C	1:A:262:GLN:H	2.15	0.49
1:A:278:ALA:O	1:A:282:MET:N	2.32	0.49
1:A:4:GLU:OE1	1:A:279:LYS:NZ	2.46	0.49
1:A:113:VAL:HG12	1:A:119:LEU:CD2	2.42	0.48
1:A:7:PHE:O	1:A:11:ASP:HB2	2.13	0.48
1:A:111:ASN:OD1	1:A:215:CYS:HA	2.15	0.47

*Continued on next page...*

Continued from previous page...

Atom-1	Atom-2	Interatomic distance (Å)	Clash overlap (Å)
1:A:54:HIS:HB2	2:A:701:TRS:C3	2.44	0.47
1:A:44:ASN:OD1	1:A:66:TYR:CE2	2.68	0.47
1:A:45:ARG:HB2	1:A:85:GLN:OE1	2.14	0.47
1:A:218:GLY:O	1:A:219:ILE:C	2.55	0.45
1:A:48:ASP:OD2	1:A:217:ALA:HB2	2.18	0.44
1:A:254:ARG:NH2	1:A:260:LEU:O	2.50	0.44
1:A:3:MET:CE	1:A:246[B]:ILE:CD1	2.96	0.43
1:A:54:HIS:HB2	2:A:701:TRS:H32	2.00	0.43
1:A:215:CYS:O	1:A:216:SER:OG	2.35	0.43
1:A:110:LEU:HB2	1:A:215:CYS:HB3	2.00	0.43
1:A:54:HIS:O	2:A:701:TRS:H32	2.18	0.43
1:A:116:LYS:HE2	1:A:182:PHE:CE1	2.53	0.43
1:A:72[B]:ILE:HD13	1:A:72[B]:ILE:N	2.34	0.43
1:A:113:VAL:O	1:A:119:LEU:CD2	2.68	0.42
1:A:42:ASN:OD1	1:A:43:ARG:N	2.53	0.42
1:A:4:GLU:O	1:A:7:PHE:HB3	2.21	0.41
1:A:197[A]:LYS:HG2	4:A:946:HOH:O	2.20	0.41
1:A:220:GLY:HA3	1:A:266:GLN:OE1	2.21	0.41
1:A:45:ARG:HB2	1:A:85:GLN:CD	2.41	0.41
1:A:9:GLN:HA	1:A:9:GLN:OE1	2.20	0.41
1:A:113:VAL:HG12	1:A:119:LEU:HD22	2.02	0.41
1:A:15:SER:HA	4:A:855:HOH:O	2.20	0.40
1:A:170:GLU:HB2	4:A:953:HOH:O	2.21	0.40
1:A:113:VAL:HG13	1:A:121:CYS:O	2.22	0.40
1:A:38:PRO:HD2	4:A:846:HOH:O	2.21	0.40

There are no symmetry-related clashes.

## 5.3 Torsion angles [i](#)

### 5.3.1 Protein backbone [i](#)

In the following table, the Percentiles column shows the percent Ramachandran outliers of the chain as a percentile score with respect to all X-ray entries followed by that with respect to entries of similar resolution.

The Analysed column shows the number of residues for which the backbone conformation was analysed, and the total number of residues.

Mol	Chain	Analysed	Favoured	Allowed	Outliers	Percentiles
1	A	292/321 (91%)	276 (94%)	8 (3%)	8 (3%)	<b>5</b> <b>1</b>

All (8) Ramachandran outliers are listed below:

Mol	Chain	Res	Type
1	A	219	ILE
1	A	222	SER
1	A	261	ILE
1	A	262	GLN
1	A	63	ASP
1	A	215	CYS
1	A	216	SER
1	A	221	ARG

### 5.3.2 Protein sidechains [i](#)

In the following table, the Percentiles column shows the percent sidechain outliers of the chain as a percentile score with respect to all X-ray entries followed by that with respect to entries of similar resolution.

The Analysed column shows the number of residues for which the sidechain conformation was analysed, and the total number of residues.

Mol	Chain	Analysed	Rotameric	Outliers	Percentiles
1	A	268/294 (91%)	251 (94%)	17 (6%)	18 15

All (17) residues with a non-rotameric sidechain are listed below:

Mol	Chain	Res	Type
1	A	11	ASP
1	A	15	SER
1	A	24	ARG
1	A	45	ARG
1	A	47	ARG
1	A	49	VAL
1	A	79	ARG
1	A	139	ASN
1	A	148	ASP
1	A	151	SER
1	A	187	SER
1	A	197[A]	LYS
1	A	197[B]	LYS
1	A	219	ILE
1	A	262	GLN
1	A	265	ASP
1	A	281	ILE

Sometimes sidechains can be flipped to improve hydrogen bonding and reduce clashes. All (1) such sidechains are listed below:

Mol	Chain	Res	Type
1	A	21	GLN

### 5.3.3 RNA [i](#)

There are no RNA molecules in this entry.

## 5.4 Non-standard residues in protein, DNA, RNA chains [i](#)

There are no non-standard protein/DNA/RNA residues in this entry.

## 5.5 Carbohydrates [i](#)

There are no monosaccharides in this entry.

## 5.6 Ligand geometry [i](#)

3 ligands are modelled in this entry.

In the following table, the Counts columns list the number of bonds (or angles) for which Mogul statistics could be retrieved, the number of bonds (or angles) that are observed in the model and the number of bonds (or angles) that are defined in the Chemical Component Dictionary. The Link column lists molecule types, if any, to which the group is linked. The Z score for a bond length (or angle) is the number of standard deviations the observed value is removed from the expected value. A bond length (or angle) with  $|Z| > 2$  is considered an outlier worth inspection. RMSZ is the root-mean-square of all Z scores of the bond lengths (or angles).

Mol	Type	Chain	Res	Link	Bond lengths			Bond angles		
					Counts	RMSZ	# Z  > 2	Counts	RMSZ	# Z  > 2
3	WV0	A	703	1	12,12,12	1.10	1 (8%)	17,17,17	1.06	1 (5%)
2	TRS	A	701	-	7,7,7	0.27	0	9,9,9	0.66	0
3	WV0	A	702	1	12,12,12	1.03	1 (8%)	17,17,17	1.11	1 (5%)

In the following table, the Chirals column lists the number of chiral outliers, the number of chiral centers analysed, the number of these observed in the model and the number defined in the Chemical Component Dictionary. Similar counts are reported in the Torsion and Rings columns. '-' means no outliers of that kind were identified.

Mol	Type	Chain	Res	Link	Chirals	Torsions	Rings
3	WV0	A	703	1	-	-	0/2/2/2
2	TRS	A	701	-	-	3/9/9/9	-
3	WV0	A	702	1	-	-	0/2/2/2

All (2) bond length outliers are listed below:

Mol	Chain	Res	Type	Atoms	Z	Observed(Å)	Ideal(Å)
3	A	703	WV0	C1-C8	-3.16	1.45	1.50
3	A	702	WV0	C1-C8	-2.88	1.46	1.50

All (2) bond angle outliers are listed below:

Mol	Chain	Res	Type	Atoms	Z	Observed(°)	Ideal(°)
3	A	702	WV0	C8-C1-C2	2.74	104.54	103.15
3	A	703	WV0	C8-C1-C2	2.71	104.53	103.15

There are no chirality outliers.

All (3) torsion outliers are listed below:

Mol	Chain	Res	Type	Atoms
2	A	701	TRS	C1-C-C3-O3
2	A	701	TRS	C2-C-C3-O3
2	A	701	TRS	N-C-C3-O3

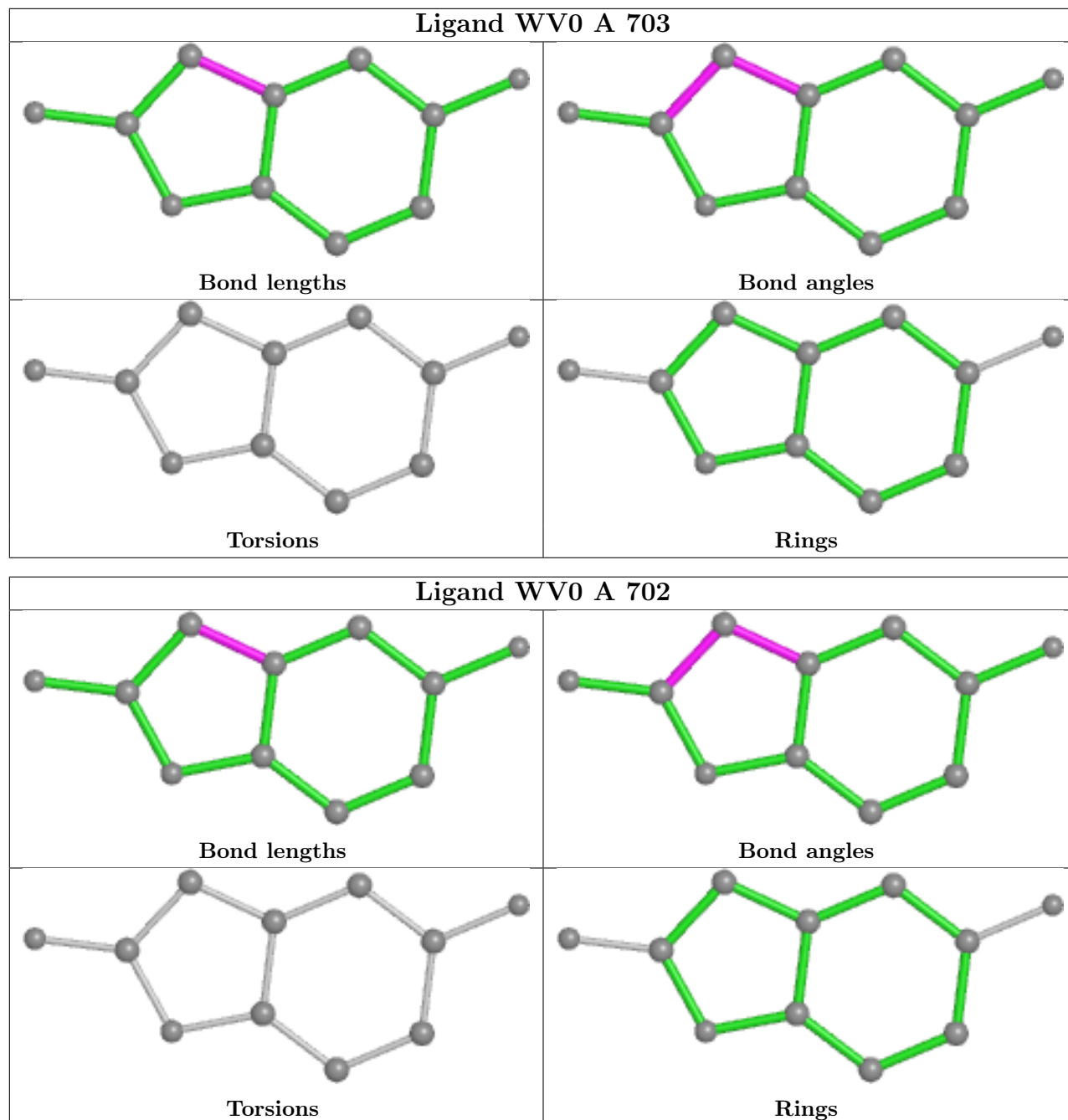
There are no ring outliers.

2 monomers are involved in 5 short contacts:

Mol	Chain	Res	Type	Clashes	Symm-Clashes
3	A	703	WV0	1	0
2	A	701	TRS	4	0

The following is a two-dimensional graphical depiction of Mogul quality analysis of bond lengths, bond angles, torsion angles, and ring geometry for all instances of the Ligand of Interest. In addition, ligands with molecular weight > 250 and outliers as shown on the validation Tables will also be included. For torsion angles, if less than 5% of the Mogul distribution of torsion angles is within 10 degrees of the torsion angle in question, then that torsion angle is considered an outlier. Any bond that is central to one or more torsion angles identified as an outlier by Mogul will be highlighted in the graph. For rings, the root-mean-square deviation (RMSD) between the ring in question and similar rings identified by Mogul is calculated over all ring torsion angles. If the average RMSD is greater than 60 degrees and the minimal RMSD between the ring in question and any Mogul-identified rings is also greater than 60 degrees, then that ring is considered an outlier. The outliers are highlighted in purple. The color gray indicates Mogul did not find sufficient

equivalents in the CSD to analyse the geometry.



## 5.7 Other polymers [i](#)

There are no such residues in this entry.

## 5.8 Polymer linkage issues [i](#)

There are no chain breaks in this entry.

## 6 Fit of model and data [\(i\)](#)

### 6.1 Protein, DNA and RNA chains [\(i\)](#)

Unable to reproduce the depositors R factor - this section is therefore empty.

### 6.2 Non-standard residues in protein, DNA, RNA chains [\(i\)](#)

Unable to reproduce the depositors R factor - this section is therefore empty.

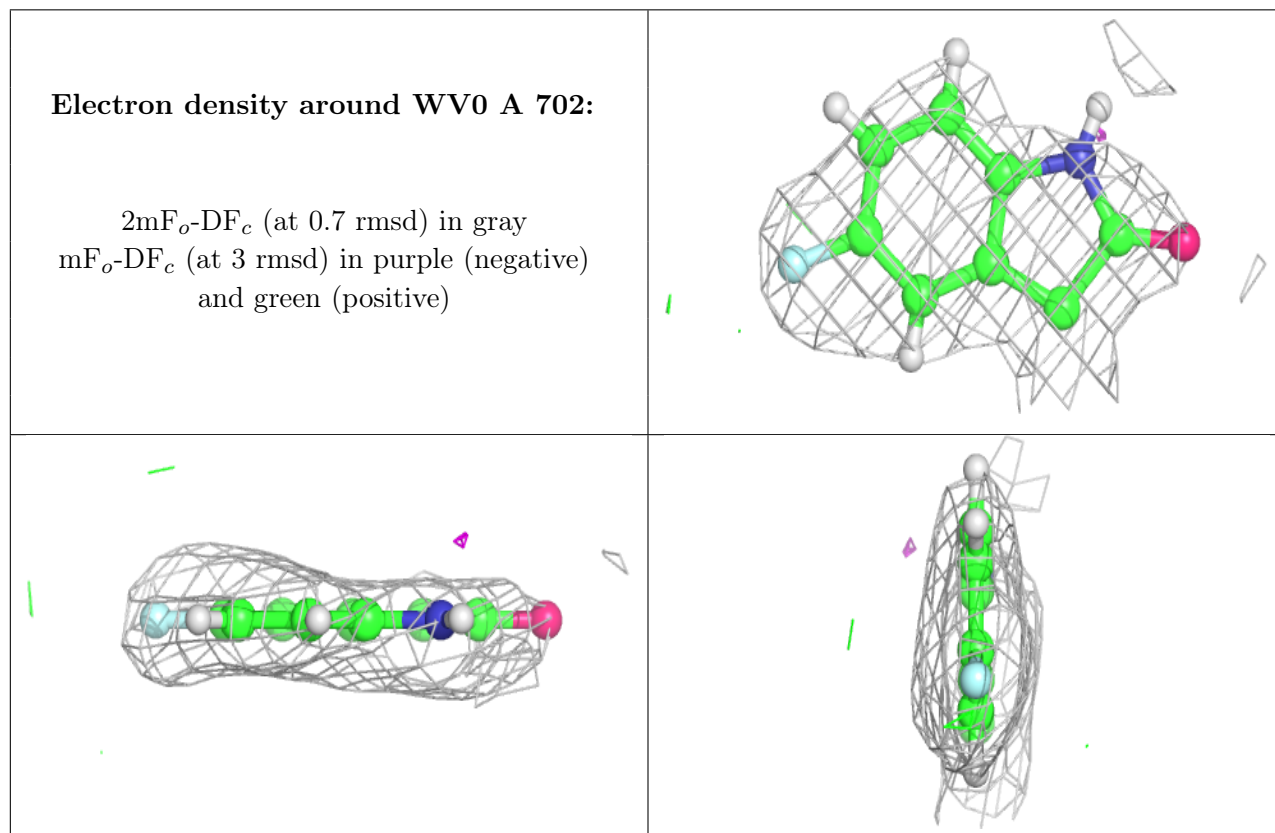
### 6.3 Carbohydrates [\(i\)](#)

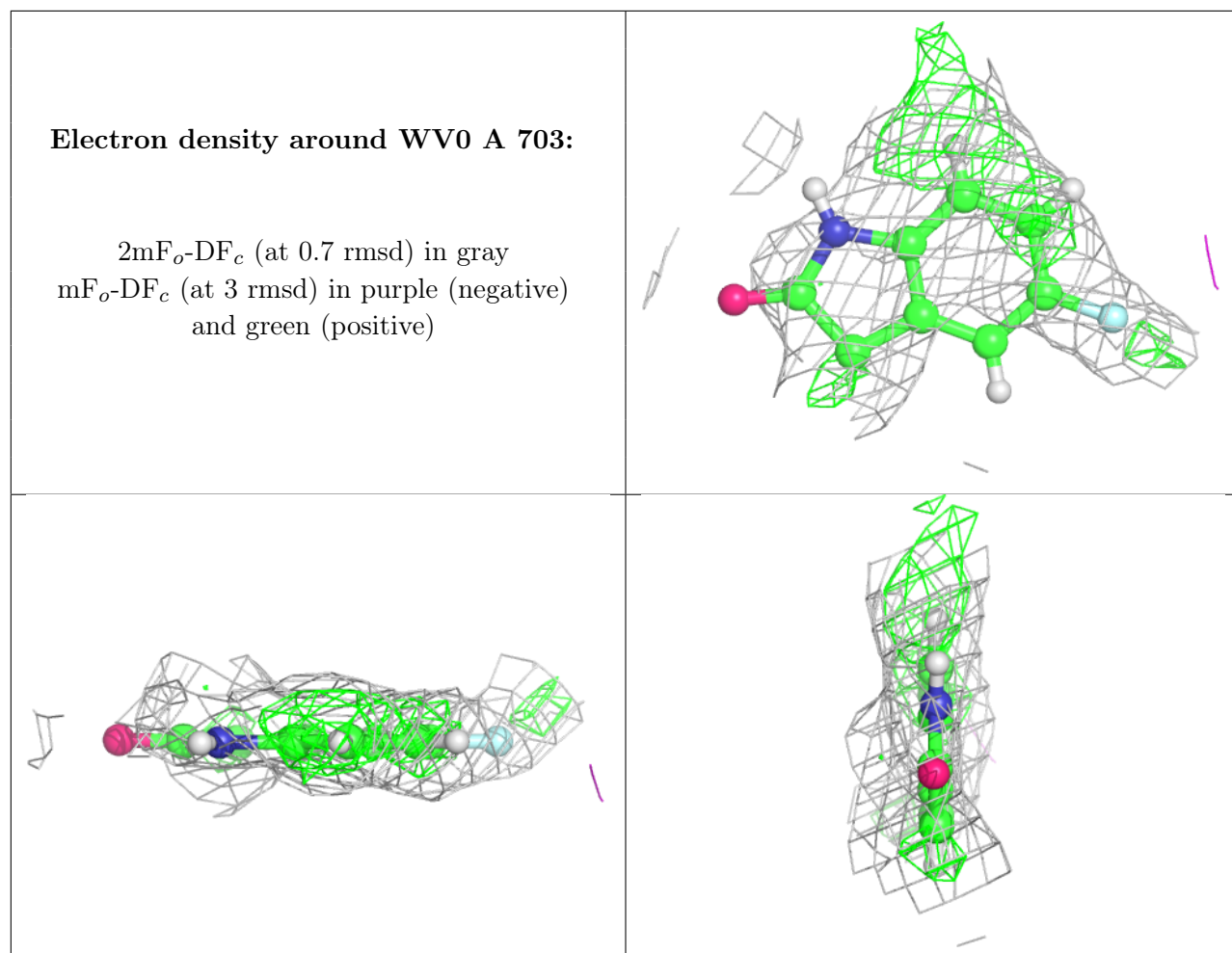
Unable to reproduce the depositors R factor - this section is therefore empty.

### 6.4 Ligands [\(i\)](#)

Unable to reproduce the depositors R factor - this section is therefore empty.

The following is a graphical depiction of the model fit to experimental electron density of all instances of the Ligand of Interest. In addition, ligands with molecular weight > 250 and outliers as shown on the geometry validation Tables will also be included. Each fit is shown from different orientation to approximate a three-dimensional view.





## 6.5 Other polymers [\(i\)](#)

Unable to reproduce the depositors R factor - this section is therefore empty.