



Full wwPDB X-ray Structure Validation Report ⓘ

Jan 3, 2024 – 11:07 am GMT

PDB ID : 5FO7
Title : Crystal Structure of Human Complement C3b at 2.8 Angstrom resolution
Authors : Forneris, F.; Wu, J.; Xue, X.; Gros, P.
Deposited on : 2015-11-18
Resolution : 2.80 Å(reported)

This is a Full wwPDB X-ray Structure Validation Report for a publicly released PDB entry.

We welcome your comments at validation@mail.wwpdb.org

A user guide is available at

<https://www.wwpdb.org/validation/2017/XrayValidationReportHelp>

with specific help available everywhere you see the ⓘ symbol.

The types of validation reports are described at

<http://www.wwpdb.org/validation/2017/FAQs#types>.

The following versions of software and data (see [references ⓘ](#)) were used in the production of this report:

MolProbity : 4.02b-467
Mogul : 1.8.4, CSD as541be (2020)
Xtriage (Phenix) : 1.13
EDS : 2.36
Percentile statistics : 20191225.v01 (using entries in the PDB archive December 25th 2019)
Refmac : 5.8.0158
CCP4 : 7.0.044 (Gargrove)
Ideal geometry (proteins) : Engh & Huber (2001)
Ideal geometry (DNA, RNA) : Parkinson et al. (1996)
Validation Pipeline (wwPDB-VP) : 2.36

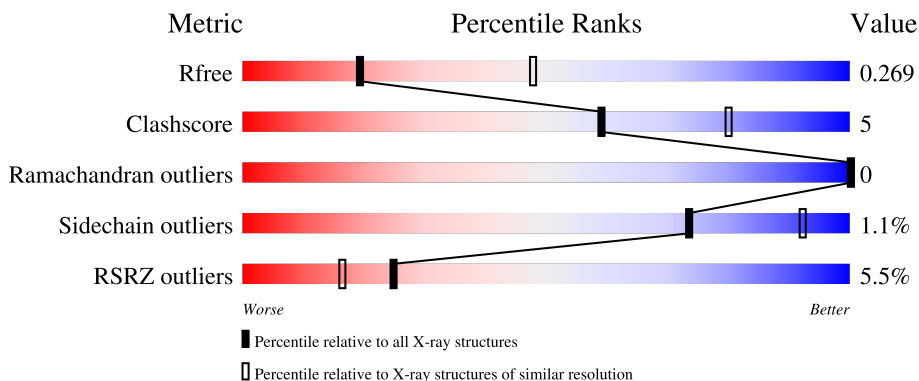
1 Overall quality at a glance

The following experimental techniques were used to determine the structure:

X-RAY DIFFRACTION

The reported resolution of this entry is 2.80 Å.

Percentile scores (ranging between 0-100) for global validation metrics of the entry are shown in the following graphic. The table shows the number of entries on which the scores are based.



Metric	Whole archive (#Entries)	Similar resolution (#Entries, resolution range(Å))
R_{free}	130704	3140 (2.80-2.80)
Clashscore	141614	3569 (2.80-2.80)
Ramachandran outliers	138981	3498 (2.80-2.80)
Sidechain outliers	138945	3500 (2.80-2.80)
RSRZ outliers	127900	3078 (2.80-2.80)

The table below summarises the geometric issues observed across the polymeric chains and their fit to the electron density. The red, orange, yellow and green segments of the lower bar indicate the fraction of residues that contain outliers for ≥ 3 , 2, 1 and 0 types of geometric quality criteria respectively. A grey segment represents the fraction of residues that are not modelled. The numeric value for each fraction is indicated below the corresponding segment, with a dot representing fractions $\leq 5\%$. The upper red bar (where present) indicates the fraction of residues that have poor fit to the electron density. The numeric value is given above the bar.

Mol	Chain	Length	Quality of chain
1	A	645	 6% 86% 13% .
2	B	915	 5% 86% 12% .

2 Entry composition [i](#)

There are 3 unique types of molecules in this entry. The entry contains 12150 atoms, of which 0 are hydrogens and 0 are deuteriums.

In the tables below, the ZeroOcc column contains the number of atoms modelled with zero occupancy, the AltConf column contains the number of residues with at least one atom in alternate conformation and the Trace column contains the number of residues modelled with at most 2 atoms.

- Molecule 1 is a protein called COMPLEMENT C3 BETA CHAIN.

Mol	Chain	Residues	Atoms					ZeroOcc	AltConf	Trace
			Total	C	N	O	S			
1	A	637	4961	3158	841	947	15	0	0	0

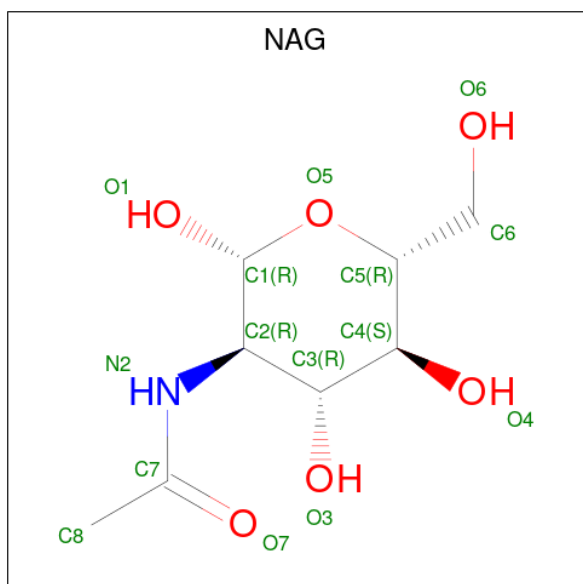
- Molecule 2 is a protein called COMPLEMENT C3B ALPHA' CHAIN.

Mol	Chain	Residues	Atoms					ZeroOcc	AltConf	Trace
			Total	C	N	O	S			
2	B	900	7161	4540	1201	1382	38	0	0	0

There is a discrepancy between the modelled and reference sequences:

Chain	Residue	Modelled	Actual	Comment	Reference
B	1013	GLU	GLN	SEE REMARK 999	UNP P01024

- Molecule 3 is 2-acetamido-2-deoxy-beta-D-glucopyranose (three-letter code: NAG) (formula: $C_8H_{15}NO_6$).

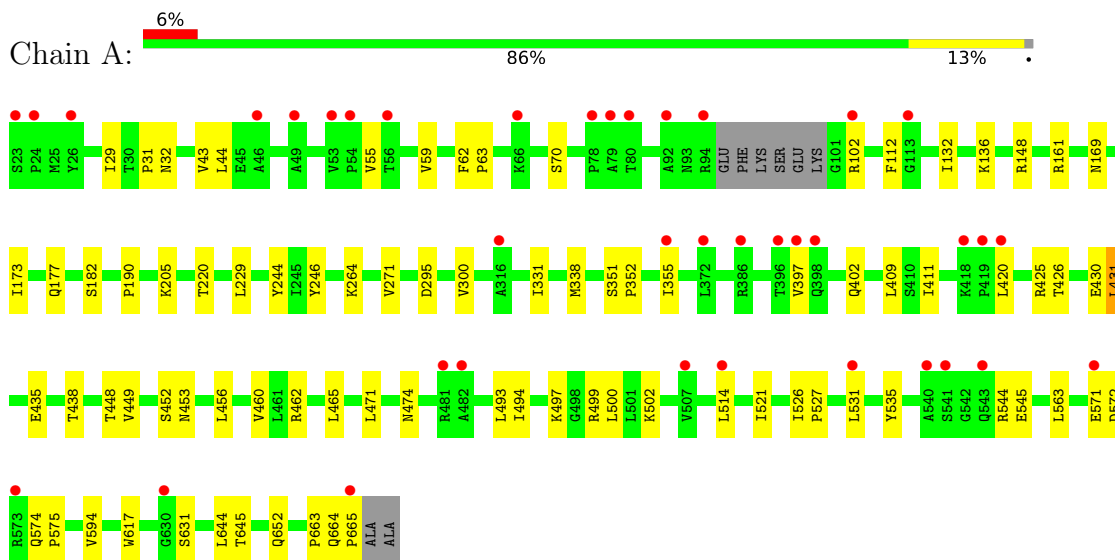


Mol	Chain	Residues	Atoms				ZeroOcc	AltConf
3	A	1	Total	C	N	O	0	0
			14	8	1	5		
3	B	1	Total	C	N	O	0	0
			14	8	1	5		

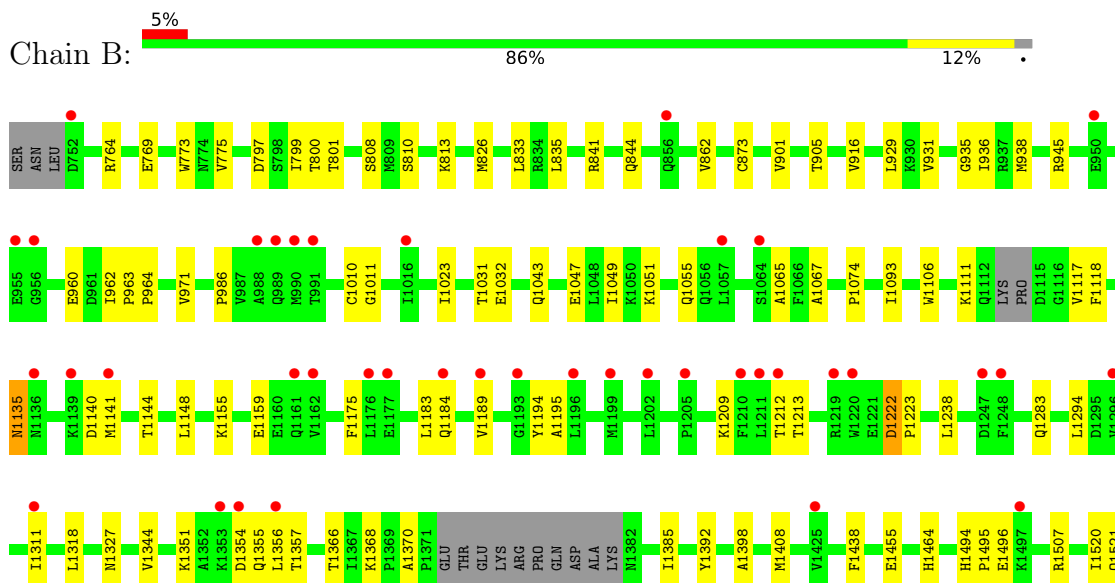
3 Residue-property plots [i](#)

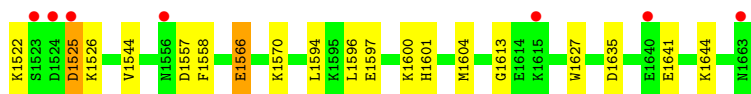
These plots are drawn for all protein, RNA, DNA and oligosaccharide chains in the entry. The first graphic for a chain summarises the proportions of the various outlier classes displayed in the second graphic. The second graphic shows the sequence view annotated by issues in geometry and electron density. Residues are color-coded according to the number of geometric quality criteria for which they contain at least one outlier: green = 0, yellow = 1, orange = 2 and red = 3 or more. A red dot above a residue indicates a poor fit to the electron density ($RSRZ > 2$). Stretches of 2 or more consecutive residues without any outlier are shown as a green connector. Residues present in the sample, but not in the model, are shown in grey.

- Molecule 1: COMPLEMENT C3 BETA CHAIN



- Molecule 2: COMPLEMENT C3B ALPHA' CHAIN





4 Data and refinement statistics

Property	Value	Source
Space group	P 1 21 1	Depositor
Cell constants a, b, c, α , β , γ	57.58Å 136.51Å 140.93Å 90.00° 96.05° 90.00°	Depositor
Resolution (Å)	36.81 – 2.80 40.33 – 2.80	Depositor EDS
% Data completeness (in resolution range)	96.0 (36.81-2.80) 88.4 (40.33-2.80)	Depositor EDS
R_{merge}	0.08	Depositor
R_{sym}	(Not available)	Depositor
$\langle I/\sigma(I) \rangle$ ¹	1.35 (at 2.81Å)	Xtrriage
Refinement program	PHENIX (PHENIX.REFINE)	Depositor
R, R_{free}	0.229 , 0.268 0.232 , 0.269	Depositor DCC
R_{free} test set	2608 reflections (5.07%)	wwPDB-VP
Wilson B-factor (Å ²)	62.5	Xtrriage
Anisotropy	0.375	Xtrriage
Bulk solvent k_{sol} (e/Å ³), B_{sol} (Å ²)	0.28 , 48.8	EDS
L-test for twinning ²	$\langle L \rangle = 0.49$, $\langle L^2 \rangle = 0.33$	Xtrriage
Estimated twinning fraction	No twinning to report.	Xtrriage
F_o, F_c correlation	0.89	EDS
Total number of atoms	12150	wwPDB-VP
Average B, all atoms (Å ²)	106.0	wwPDB-VP

Xtrriage's analysis on translational NCS is as follows: *The largest off-origin peak in the Patterson function is 3.34% of the height of the origin peak. No significant pseudotranslation is detected.*

¹Intensities estimated from amplitudes.

²Theoretical values of $\langle |L| \rangle$, $\langle L^2 \rangle$ for acentric reflections are 0.5, 0.333 respectively for untwinned datasets, and 0.375, 0.2 for perfectly twinned datasets.

5 Model quality [i](#)

5.1 Standard geometry [i](#)

Bond lengths and bond angles in the following residue types are not validated in this section: NAG

The Z score for a bond length (or angle) is the number of standard deviations the observed value is removed from the expected value. A bond length (or angle) with $|Z| > 5$ is considered an outlier worth inspection. RMSZ is the root-mean-square of all Z scores of the bond lengths (or angles).

Mol	Chain	Bond lengths		Bond angles	
		RMSZ	# Z >5	RMSZ	# Z >5
1	A	0.22	0/5061	0.40	0/6879
2	B	0.24	0/7302	0.42	0/9889
All	All	0.24	0/12363	0.41	0/16768

There are no bond length outliers.

There are no bond angle outliers.

There are no chirality outliers.

There are no planarity outliers.

5.2 Too-close contacts [i](#)

In the following table, the Non-H and H(model) columns list the number of non-hydrogen atoms and hydrogen atoms in the chain respectively. The H(added) column lists the number of hydrogen atoms added and optimized by MolProbity. The Clashes column lists the number of clashes within the asymmetric unit, whereas Symm-Clashes lists symmetry-related clashes.

Mol	Chain	Non-H	H(model)	H(added)	Clashes	Symm-Clashes
1	A	4961	0	5018	46	0
2	B	7161	0	7061	74	0
3	A	14	0	13	0	0
3	B	14	0	13	0	0
All	All	12150	0	12105	114	0

The all-atom clashscore is defined as the number of clashes found per 1000 atoms (including hydrogen atoms). The all-atom clashscore for this structure is 5.

All (114) close contacts within the same asymmetric unit are listed below, sorted by their clash magnitude.

Atom-1	Atom-2	Interatomic distance (Å)	Clash overlap (Å)
1:A:664:GLN:HB2	1:A:665:PRO:HD2	1.72	0.72
2:B:862:VAL:HG22	2:B:916:VAL:HG12	1.74	0.68
2:B:1525:ASP:N	2:B:1525:ASP:OD1	2.25	0.67
2:B:764:ARG:HB3	2:B:797:ASP:HB3	1.77	0.66
1:A:44:LEU:HD13	1:A:55:VAL:HG11	1.77	0.66
2:B:1521:GLN:HA	2:B:1522:LYS:HB3	1.76	0.66
1:A:544:ARG:O	1:A:652:GLN:NE2	2.30	0.64
1:A:474:ASN:HB3	1:A:514:LEU:HD11	1.79	0.64
2:B:1438:PHE:HZ	2:B:1464:HIS:HB2	1.66	0.61
2:B:1294:LEU:HB2	2:B:1311:ILE:HB	1.82	0.61
1:A:456:LEU:HB2	1:A:535:TYR:HE1	1.65	0.60
1:A:465:LEU:HD21	1:A:521:ILE:HG13	1.82	0.59
2:B:1049:ILE:HG22	2:B:1093:ILE:HD13	1.84	0.59
1:A:331:ILE:HG12	1:A:338:MET:HG3	1.85	0.58
2:B:1494:HIS:NE2	2:B:1496:GLU:HB3	2.19	0.58
2:B:1521:GLN:HA	2:B:1522:LYS:CB	2.33	0.57
1:A:161:ARG:H	1:A:182:SER:HB3	1.68	0.57
2:B:1354:ASP:OD1	2:B:1354:ASP:N	2.37	0.57
2:B:1118:PHE:CD1	2:B:1144:THR:HA	2.39	0.57
2:B:835:LEU:HG	2:B:929:LEU:HD23	1.88	0.55
1:A:229:LEU:HD11	2:B:769:GLU:HG2	1.90	0.54
2:B:1566:GLU:OE2	2:B:1601:HIS:NE2	2.41	0.54
2:B:1355:GLN:HG3	2:B:1357:THR:H	1.72	0.54
1:A:402:GLN:NE2	1:A:462:ARG:O	2.38	0.54
1:A:460:VAL:HG13	1:A:471:LEU:HD11	1.92	0.52
1:A:169:ASN:HD21	1:A:173:ILE:HB	1.74	0.52
2:B:810:SER:HB3	2:B:813:LYS:HB2	1.91	0.52
2:B:1135:ASN:N	2:B:1135:ASN:OD1	2.44	0.51
2:B:1148:LEU:HD23	2:B:1195:ALA:HB1	1.93	0.50
2:B:1141:MET:HG3	2:B:1183:LEU:HD21	1.92	0.50
2:B:1209:LYS:HA	2:B:1212:THR:HG22	1.94	0.50
2:B:1117:VAL:HG21	2:B:1175:PHE:CG	2.47	0.49
2:B:1043:GLN:NE2	2:B:1047:GLU:OE2	2.46	0.49
2:B:873:CYS:HB3	2:B:901:VAL:HB	1.94	0.48
2:B:1392:TYR:CG	2:B:1398:ALA:HB2	2.47	0.48
2:B:799:ILE:HG23	2:B:826:MET:HA	1.96	0.48
2:B:1594:LEU:HB3	2:B:1596:LEU:HG	1.95	0.48
1:A:411:ILE:HD11	1:A:420:LEU:HD21	1.96	0.48
1:A:148:ARG:HG3	2:B:773:TRP:CZ2	2.49	0.48
1:A:663:PRO:HA	1:A:664:GLN:HA	1.54	0.48
2:B:1051:LYS:NZ	2:B:1055:GLN:OE1	2.42	0.48
2:B:945:ARG:NH1	2:B:960:GLU:OE1	2.46	0.47

Continued on next page...

Continued from previous page...

Atom-1	Atom-2	Interatomic distance (Å)	Clash overlap (Å)
2:B:1635:ASP:OD1	2:B:1635:ASP:N	2.46	0.47
1:A:132:ILE:HB	1:A:220:THR:OG1	2.14	0.47
2:B:962:ILE:HA	2:B:963:PRO:HD3	1.74	0.47
1:A:397:VAL:HG12	1:A:409:LEU:HD22	1.95	0.47
1:A:425:ARG:HG2	1:A:438:THR:HB	1.96	0.47
2:B:800:THR:OG1	2:B:801:THR:N	2.47	0.47
2:B:964:PRO:HB2	2:B:1327:ASN:HD21	1.80	0.46
2:B:1140:ASP:O	2:B:1144:THR:OG1	2.20	0.46
1:A:271:VAL:HG21	1:A:300:VAL:HG11	1.98	0.46
1:A:448:THR:HG21	1:A:453:ASN:H	1.80	0.46
1:A:494:ILE:HD12	1:A:502:LYS:HB3	1.97	0.46
2:B:1074:PRO:HB2	2:B:1106:TRP:CZ2	2.51	0.46
1:A:43:VAL:HG11	1:A:493:LEU:HD21	1.98	0.45
2:B:905:THR:HA	2:B:931:VAL:HB	1.97	0.45
2:B:1520:ILE:O	2:B:1522:LYS:NZ	2.49	0.45
1:A:177:GLN:HG3	2:B:1318:LEU:HD13	1.99	0.45
2:B:1370:ALA:HB2	2:B:1385:ILE:HG13	1.98	0.45
2:B:1065:ALA:HB2	2:B:1106:TRP:CE2	2.52	0.45
2:B:1194:TYR:CE1	2:B:1238:LEU:HB3	2.52	0.45
1:A:62:PHE:HA	1:A:63:PRO:HA	1.79	0.45
1:A:431:LEU:HD12	1:A:435:GLU:HB2	1.98	0.44
2:B:1604:MET:HA	2:B:1627:TRP:O	2.17	0.44
1:A:527:PRO:HG3	1:A:617:TRP:CE3	2.52	0.44
1:A:574:GLN:HA	1:A:575:PRO:HD3	1.87	0.44
2:B:833:LEU:HG	2:B:835:LEU:HD13	2.00	0.43
2:B:841:ARG:HE	2:B:905:THR:HG23	1.83	0.43
2:B:1023:ILE:HD12	2:B:1023:ILE:HA	1.92	0.43
1:A:594:VAL:HG12	2:B:775:VAL:HG22	2.01	0.43
2:B:1118:PHE:HD1	2:B:1144:THR:HA	1.83	0.43
2:B:962:ILE:HG21	2:B:1344:VAL:HG21	2.01	0.43
2:B:1111:LYS:O	2:B:1118:PHE:HA	2.19	0.43
1:A:136:LYS:HB2	1:A:136:LYS:HE3	1.87	0.42
1:A:449:VAL:HB	1:A:545:GLU:HG3	2.01	0.42
2:B:1507:ARG:NH2	2:B:1613:GLY:HA3	2.34	0.42
2:B:1031:THR:HG22	2:B:1283:GLN:HG3	2.00	0.42
2:B:844:GLN:HA	2:B:901:VAL:HG22	2.02	0.42
1:A:271:VAL:HG11	1:A:300:VAL:HG11	2.02	0.42
2:B:1067:ALA:HB2	2:B:1074:PRO:HA	2.01	0.42
2:B:1597:GLU:O	2:B:1600:LYS:HB2	2.19	0.42
2:B:1183:LEU:O	2:B:1184:GLN:HB3	2.19	0.42
2:B:1641:GLU:OE1	2:B:1641:GLU:N	2.52	0.42

Continued on next page...

Continued from previous page...

Atom-1	Atom-2	Interatomic distance (Å)	Clash overlap (Å)
1:A:59:VAL:HB	1:A:70:SER:HB2	2.02	0.41
1:A:32:ASN:HA	1:A:645:THR:HG23	2.02	0.41
1:A:244:TYR:CE2	1:A:246:TYR:HB2	2.55	0.41
1:A:494:ILE:HG12	1:A:531:LEU:HD13	2.02	0.41
2:B:1544:VAL:HG23	2:B:1570:LYS:HE2	2.01	0.41
1:A:31:PRO:HA	1:A:644:LEU:HD23	2.00	0.41
1:A:102:ARG:NH1	2:B:1032:GLU:O	2.53	0.41
2:B:1010:CYS:HB3	2:B:1011:GLY:H	1.69	0.41
2:B:1117:VAL:HG21	2:B:1175:PHE:CD2	2.56	0.41
2:B:1644:LYS:HE3	2:B:1644:LYS:HB2	1.95	0.41
1:A:264:LYS:HD3	1:A:295:ASP:O	2.21	0.41
1:A:571:GLU:HB3	1:A:572:ASP:HA	2.01	0.41
2:B:1494:HIS:ND1	2:B:1495:PRO:HD2	2.36	0.41
1:A:563:LEU:HD22	2:B:808:SER:HB3	2.03	0.41
1:A:148:ARG:CZ	1:A:594:VAL:HB	2.51	0.41
2:B:1189:VAL:HG11	2:B:1213:THR:HG21	2.03	0.41
2:B:1366:THR:HG21	2:B:1368:LYS:HE3	2.02	0.41
2:B:1557:ASP:OD1	2:B:1558:PHE:N	2.51	0.41
2:B:1222:ASP:HA	2:B:1223:PRO:HD2	1.91	0.40
2:B:1525:ASP:HB2	2:B:1526:LYS:H	1.63	0.40
2:B:971:VAL:HG22	2:B:1351:LYS:HG2	2.02	0.40
1:A:29:ILE:HB	1:A:43:VAL:CG1	2.52	0.40
1:A:351:SER:HA	1:A:352:PRO:HD3	1.82	0.40
2:B:935:GLY:HA3	2:B:971:VAL:HG21	2.03	0.40
2:B:1141:MET:HE2	2:B:1183:LEU:HD11	2.03	0.40
2:B:1155:LYS:O	2:B:1159:GLU:HB2	2.21	0.40
2:B:1408:MET:SD	2:B:1495:PRO:HD3	2.62	0.40
1:A:355:ILE:HD11	1:A:426:THR:HG23	2.03	0.40
1:A:497:LYS:NZ	1:A:526:ILE:O	2.55	0.40
1:A:452:SER:OG	1:A:545:GLU:OE2	2.38	0.40
2:B:936:ILE:HB	2:B:1356:LEU:HD21	2.02	0.40

There are no symmetry-related clashes.

5.3 Torsion angles

5.3.1 Protein backbone

In the following table, the Percentiles column shows the percent Ramachandran outliers of the chain as a percentile score with respect to all X-ray entries followed by that with respect to entries of similar resolution.

The Analysed column shows the number of residues for which the backbone conformation was analysed, and the total number of residues.

Mol	Chain	Analysed	Favoured	Allowed	Outliers	Percentiles	
1	A	633/645 (98%)	608 (96%)	25 (4%)	0	100	100
2	B	894/915 (98%)	854 (96%)	40 (4%)	0	100	100
All	All	1527/1560 (98%)	1462 (96%)	65 (4%)	0	100	100

There are no Ramachandran outliers to report.

5.3.2 Protein sidechains [i](#)

In the following table, the Percentiles column shows the percent sidechain outliers of the chain as a percentile score with respect to all X-ray entries followed by that with respect to entries of similar resolution.

The Analysed column shows the number of residues for which the sidechain conformation was analysed, and the total number of residues.

Mol	Chain	Analysed	Rotameric	Outliers	Percentiles	
1	A	561/567 (99%)	553 (99%)	8 (1%)	67	90
2	B	789/810 (97%)	782 (99%)	7 (1%)	78	94
All	All	1350/1377 (98%)	1335 (99%)	15 (1%)	73	92

All (15) residues with a non-rotameric sidechain are listed below:

Mol	Chain	Res	Type
1	A	112	PHE
1	A	190	PRO
1	A	205	LYS
1	A	430	GLU
1	A	431	LEU
1	A	499	ARG
1	A	500	LEU
1	A	631	SER
2	B	938	MET
2	B	986	PRO
2	B	1135	ASN
2	B	1222	ASP
2	B	1455	GLU
2	B	1525	ASP
2	B	1566	GLU

Sometimes sidechains can be flipped to improve hydrogen bonding and reduce clashes. There are no such sidechains identified.

5.3.3 RNA [i](#)

There are no RNA molecules in this entry.

5.4 Non-standard residues in protein, DNA, RNA chains [i](#)

There are no non-standard protein/DNA/RNA residues in this entry.

5.5 Carbohydrates [i](#)

There are no monosaccharides in this entry.

5.6 Ligand geometry [i](#)

2 ligands are modelled in this entry.

In the following table, the Counts columns list the number of bonds (or angles) for which Mogul statistics could be retrieved, the number of bonds (or angles) that are observed in the model and the number of bonds (or angles) that are defined in the Chemical Component Dictionary. The Link column lists molecule types, if any, to which the group is linked. The Z score for a bond length (or angle) is the number of standard deviations the observed value is removed from the expected value. A bond length (or angle) with $|Z| > 2$ is considered an outlier worth inspection. RMSZ is the root-mean-square of all Z scores of the bond lengths (or angles).

Mol	Type	Chain	Res	Link	Bond lengths			Bond angles		
					Counts	RMSZ	# Z > 2	Counts	RMSZ	# Z > 2
3	NAG	A	1063	-	14,14,15	0.35	0	17,19,21	0.58	0
3	NAG	B	1917	-	14,14,15	0.39	0	17,19,21	0.46	0

In the following table, the Chirals column lists the number of chiral outliers, the number of chiral centers analysed, the number of these observed in the model and the number defined in the Chemical Component Dictionary. Similar counts are reported in the Torsion and Rings columns. '2' means no outliers of that kind were identified.

Mol	Type	Chain	Res	Link	Chirals	Torsions	Rings
3	NAG	A	1063	-	-	2/6/23/26	0/1/1/1
3	NAG	B	1917	-	-	0/6/23/26	0/1/1/1

There are no bond length outliers.

There are no bond angle outliers.

There are no chirality outliers.

All (2) torsion outliers are listed below:

Mol	Chain	Res	Type	Atoms
3	A	1063	NAG	O5-C5-C6-O6
3	A	1063	NAG	C4-C5-C6-O6

There are no ring outliers.

No monomer is involved in short contacts.

5.7 Other polymers [i](#)

There are no such residues in this entry.

5.8 Polymer linkage issues [i](#)

There are no chain breaks in this entry.

6 Fit of model and data

6.1 Protein, DNA and RNA chains

In the following table, the column labelled ‘#RSRZ > 2’ contains the number (and percentage) of RSRZ outliers, followed by percent RSRZ outliers for the chain as percentile scores relative to all X-ray entries and entries of similar resolution. The OWAB column contains the minimum, median, 95th percentile and maximum values of the occupancy-weighted average B-factor per residue. The column labelled ‘Q < 0.9’ lists the number of (and percentage) of residues with an average occupancy less than 0.9.

Mol	Chain	Analysed	<RSRZ>	#RSRZ>2	OWAB(Å ²)	Q<0.9
1	A	637/645 (98%)	0.43	38 (5%) 21 14	42, 107, 185, 241	0
2	B	900/915 (98%)	0.39	47 (5%) 27 18	41, 99, 176, 279	0
All	All	1537/1560 (98%)	0.41	85 (5%) 25 16	41, 102, 181, 279	0

All (85) RSRZ outliers are listed below:

Mol	Chain	Res	Type	RSRZ
2	B	1556	ASN	6.3
1	A	507	VAL	5.4
2	B	1196	LEU	5.2
1	A	665	PRO	4.5
2	B	1184	GLN	4.4
2	B	990	MET	4.3
2	B	1136	ASN	4.1
2	B	1425	VAL	4.1
2	B	1353	LYS	4.1
1	A	541	SER	3.8
1	A	540	ALA	3.6
2	B	1497	LYS	3.5
2	B	988	ALA	3.5
2	B	955	GLU	3.4
2	B	1524	ASP	3.4
1	A	571	GLU	3.3
2	B	1161	GLN	3.2
2	B	989	GLN	3.2
2	B	1640	GLU	3.2
2	B	1356	LEU	3.2
1	A	23	SER	3.2
1	A	94	ARG	3.1
2	B	1177	GLU	3.1
2	B	1199	MET	3.1

Continued on next page...

Continued from previous page...

Mol	Chain	Res	Type	RSRZ
2	B	752	ASP	3.0
1	A	113	GLY	3.0
1	A	316	ALA	2.9
2	B	1311	ILE	2.9
1	A	92	ALA	2.9
1	A	514	LEU	2.9
1	A	481	ARG	2.8
1	A	54	PRO	2.8
2	B	1248	PHE	2.8
2	B	1525	ASP	2.8
1	A	630	GLY	2.8
2	B	1523	SER	2.8
1	A	420	LEU	2.6
2	B	1162	VAL	2.6
1	A	396	THR	2.6
2	B	1663	ASN	2.6
2	B	1212	THR	2.6
2	B	1141	MET	2.6
1	A	372	LEU	2.6
1	A	24	PRO	2.6
1	A	78	PRO	2.6
2	B	956	GLY	2.5
2	B	1193	GLY	2.5
2	B	1220	TRP	2.5
2	B	991	THR	2.4
1	A	26	TYR	2.4
2	B	1189	VAL	2.4
1	A	53	VAL	2.4
1	A	573	ARG	2.4
1	A	418	LYS	2.4
1	A	49	ALA	2.3
2	B	1211	LEU	2.3
2	B	1202	LEU	2.3
2	B	1057	LEU	2.3
1	A	46	ALA	2.3
1	A	543	GLN	2.3
2	B	856	GLN	2.3
1	A	397	VAL	2.2
2	B	1064	SER	2.2
2	B	1354	ASP	2.2
1	A	56	THR	2.2
2	B	1176	LEU	2.1

Continued on next page...

Continued from previous page...

Mol	Chain	Res	Type	RSRZ
2	B	1247	ASP	2.1
2	B	1016	ILE	2.1
2	B	1219	ARG	2.1
2	B	1296	VAL	2.1
2	B	1205	PRO	2.1
1	A	79	ALA	2.1
1	A	482	ALA	2.1
1	A	102	ARG	2.1
2	B	1210	PHE	2.1
1	A	386	ARG	2.1
1	A	398	GLN	2.0
1	A	531	LEU	2.0
1	A	419	PRO	2.0
1	A	355	ILE	2.0
2	B	950	GLU	2.0
2	B	1139	LYS	2.0
1	A	66	LYS	2.0
2	B	1615	LYS	2.0
1	A	80	THR	2.0

6.2 Non-standard residues in protein, DNA, RNA chains [i](#)

There are no non-standard protein/DNA/RNA residues in this entry.

6.3 Carbohydrates [i](#)

There are no monosaccharides in this entry.

6.4 Ligands [i](#)

In the following table, the Atoms column lists the number of modelled atoms in the group and the number defined in the chemical component dictionary. The B-factors column lists the minimum, median, 95th percentile and maximum values of B factors of atoms in the group. The column labelled 'Q<0.9' lists the number of atoms with occupancy less than 0.9.

Mol	Type	Chain	Res	Atoms	RSCC	RSR	B-factors(Å ²)	Q<0.9
3	NAG	B	1917	14/15	0.64	0.29	134,139,150,151	0
3	NAG	A	1063	14/15	0.77	0.23	151,155,159,160	0

6.5 Other polymers [i](#)

There are no such residues in this entry.