



Full wwPDB X-ray Structure Validation Report ⓘ

Sep 16, 2023 – 11:54 PM EDT

PDB ID : 3FOW
Title : Plasmodium Purine Nucleoside Phosphorylase V66I-V73I-Y160F Mutant
Authors : Donaldson, T.; Zhan, C.
Deposited on : 2009-01-02
Resolution : 2.80 Å(reported)

This is a Full wwPDB X-ray Structure Validation Report for a publicly released PDB entry.

We welcome your comments at validation@mail.wwpdb.org

A user guide is available at

<https://www.wwpdb.org/validation/2017/XrayValidationReportHelp>

with specific help available everywhere you see the ⓘ symbol.

The types of validation reports are described at

<http://www.wwpdb.org/validation/2017/FAQs#types>.

The following versions of software and data (see [references ⓘ](#)) were used in the production of this report:

MolProbity : 4.02b-467
Mogul : 1.8.5 (274361), CSD as541be (2020)
Xtriage (Phenix) : 1.13
EDS : 2.35.1
buster-report : 1.1.7 (2018)
Percentile statistics : 20191225.v01 (using entries in the PDB archive December 25th 2019)
Refmac : 5.8.0158
CCP4 : 7.0.044 (Gargrove)
Ideal geometry (proteins) : Engh & Huber (2001)
Ideal geometry (DNA, RNA) : Parkinson et al. (1996)
Validation Pipeline (wwPDB-VP) : 2.35.1

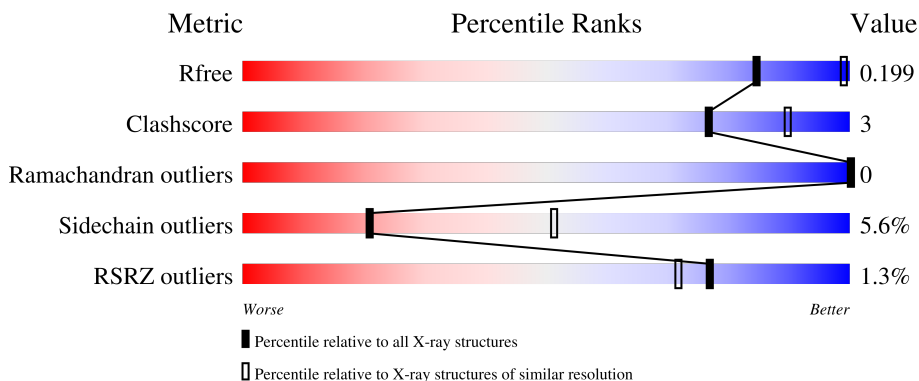
1 Overall quality at a glance

The following experimental techniques were used to determine the structure:

X-RAY DIFFRACTION



The reported resolution of this entry is 2.80 Å.

Percentile scores (ranging between 0-100) for global validation metrics of the entry are shown in the following graphic. The table shows the number of entries on which the scores are based.



Metric	Whole archive (#Entries)	Similar resolution (#Entries, resolution range(Å))
R_{free}	130704	3140 (2.80-2.80)
Clashscore	141614	3569 (2.80-2.80)
Ramachandran outliers	138981	3498 (2.80-2.80)
Sidechain outliers	138945	3500 (2.80-2.80)
RSRZ outliers	127900	3078 (2.80-2.80)

The table below summarises the geometric issues observed across the polymeric chains and their fit to the electron density. The red, orange, yellow and green segments of the lower bar indicate the fraction of residues that contain outliers for ≥ 3 , 2, 1 and 0 types of geometric quality criteria respectively. A grey segment represents the fraction of residues that are not modelled. The numeric value for each fraction is indicated below the corresponding segment, with a dot representing fractions $\leq 5\%$. The upper red bar (where present) indicates the fraction of residues that have poor fit to the electron density. The numeric value is given above the bar.

Mol	Chain	Length	Quality of chain
1	A	276	 2% 75% 9% • 15%
1	B	276	 75% 9% • 16%

2 Entry composition [i](#)

There are 4 unique types of molecules in this entry. The entry contains 3694 atoms, of which 0 are hydrogens and 0 are deuteriums.

In the tables below, the ZeroOcc column contains the number of atoms modelled with zero occupancy, the AltConf column contains the number of residues with at least one atom in alternate conformation and the Trace column contains the number of residues modelled with at most 2 atoms.

- Molecule 1 is a protein called Uridine phosphorylase, putative.

Mol	Chain	Residues	Atoms					ZeroOcc	AltConf	Trace
			Total	C	N	O	S			
1	A	234	1784	1134	307	327	16	0	0	0
1	B	233	1775	1128	305	326	16	0	0	0

There are 70 discrepancies between the modelled and reference sequences:

Chain	Residue	Modelled	Actual	Comment	Reference
A	-1	MET	-	expression tag	UNP Q8I3X4
A	0	ALA	-	expression tag	UNP Q8I3X4
A	1	LEU	-	expression tag	UNP Q8I3X4
A	66	ILE	VAL	engineered mutation	UNP Q8I3X4
A	73	ILE	VAL	engineered mutation	UNP Q8I3X4
A	160	PHE	TYR	engineered mutation	UNP Q8I3X4
A	246	LYS	-	expression tag	UNP Q8I3X4
A	247	GLY	-	expression tag	UNP Q8I3X4
A	248	GLU	-	expression tag	UNP Q8I3X4
A	249	PHE	-	expression tag	UNP Q8I3X4
A	250	GLU	-	expression tag	UNP Q8I3X4
A	251	ALA	-	expression tag	UNP Q8I3X4
A	252	TYR	-	expression tag	UNP Q8I3X4
A	253	VAL	-	expression tag	UNP Q8I3X4
A	254	GLU	-	expression tag	UNP Q8I3X4
A	255	GLN	-	expression tag	UNP Q8I3X4
A	256	LYS	-	expression tag	UNP Q8I3X4
A	257	LEU	-	expression tag	UNP Q8I3X4
A	258	ILE	-	expression tag	UNP Q8I3X4
A	259	SER	-	expression tag	UNP Q8I3X4
A	260	GLU	-	expression tag	UNP Q8I3X4
A	261	GLU	-	expression tag	UNP Q8I3X4
A	262	ASP	-	expression tag	UNP Q8I3X4
A	263	LEU	-	expression tag	UNP Q8I3X4
A	264	ASN	-	expression tag	UNP Q8I3X4

Continued on next page...

Continued from previous page...

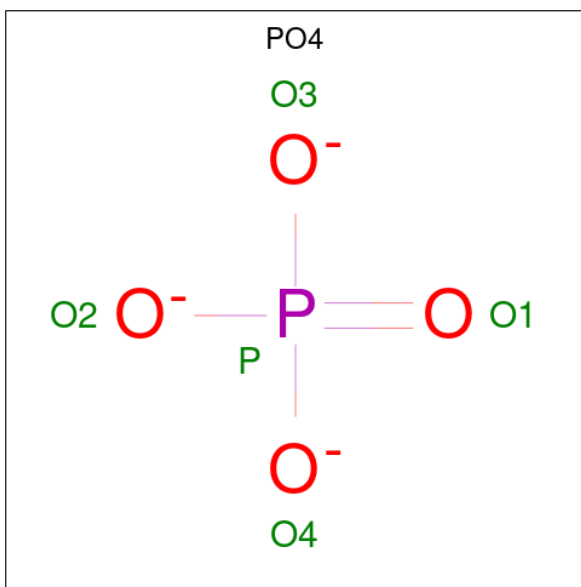
Chain	Residue	Modelled	Actual	Comment	Reference
A	265	SER	-	expression tag	UNP Q8I3X4
A	266	ALA	-	expression tag	UNP Q8I3X4
A	267	VAL	-	expression tag	UNP Q8I3X4
A	268	ASP	-	expression tag	UNP Q8I3X4
A	269	HIS	-	expression tag	UNP Q8I3X4
A	270	HIS	-	expression tag	UNP Q8I3X4
A	271	HIS	-	expression tag	UNP Q8I3X4
A	272	HIS	-	expression tag	UNP Q8I3X4
A	273	HIS	-	expression tag	UNP Q8I3X4
A	274	HIS	-	expression tag	UNP Q8I3X4
B	-1	MET	-	expression tag	UNP Q8I3X4
B	0	ALA	-	expression tag	UNP Q8I3X4
B	1	LEU	-	expression tag	UNP Q8I3X4
B	66	ILE	VAL	engineered mutation	UNP Q8I3X4
B	73	ILE	VAL	engineered mutation	UNP Q8I3X4
B	160	PHE	TYR	engineered mutation	UNP Q8I3X4
B	246	LYS	-	expression tag	UNP Q8I3X4
B	247	GLY	-	expression tag	UNP Q8I3X4
B	248	GLU	-	expression tag	UNP Q8I3X4
B	249	PHE	-	expression tag	UNP Q8I3X4
B	250	GLU	-	expression tag	UNP Q8I3X4
B	251	ALA	-	expression tag	UNP Q8I3X4
B	252	TYR	-	expression tag	UNP Q8I3X4
B	253	VAL	-	expression tag	UNP Q8I3X4
B	254	GLU	-	expression tag	UNP Q8I3X4
B	255	GLN	-	expression tag	UNP Q8I3X4
B	256	LYS	-	expression tag	UNP Q8I3X4
B	257	LEU	-	expression tag	UNP Q8I3X4
B	258	ILE	-	expression tag	UNP Q8I3X4
B	259	SER	-	expression tag	UNP Q8I3X4
B	260	GLU	-	expression tag	UNP Q8I3X4
B	261	GLU	-	expression tag	UNP Q8I3X4
B	262	ASP	-	expression tag	UNP Q8I3X4
B	263	LEU	-	expression tag	UNP Q8I3X4
B	264	ASN	-	expression tag	UNP Q8I3X4
B	265	SER	-	expression tag	UNP Q8I3X4
B	266	ALA	-	expression tag	UNP Q8I3X4
B	267	VAL	-	expression tag	UNP Q8I3X4
B	268	ASP	-	expression tag	UNP Q8I3X4
B	269	HIS	-	expression tag	UNP Q8I3X4
B	270	HIS	-	expression tag	UNP Q8I3X4
B	271	HIS	-	expression tag	UNP Q8I3X4

Continued on next page...

Continued from previous page...

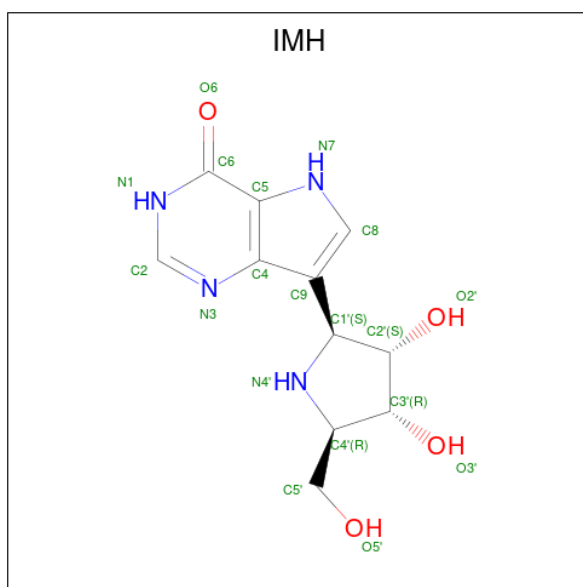
Chain	Residue	Modelled	Actual	Comment	Reference
B	272	HIS	-	expression tag	UNP Q8I3X4
B	273	HIS	-	expression tag	UNP Q8I3X4
B	274	HIS	-	expression tag	UNP Q8I3X4

- Molecule 2 is PHOSPHATE ION (three-letter code: PO4) (formula: O₄P).



Mol	Chain	Residues	Atoms	ZeroOcc	AltConf
2	A	1	Total O P 5 4 1	0	0
2	A	1	Total O P 5 4 1	0	0
2	A	1	Total O P 5 4 1	0	0
2	B	1	Total O P 5 4 1	0	0

- Molecule 3 is 1,4-DIDEOXY-4-AZA-1-(S)-(9-DEAZAHYPOXANTHIN-9-YL)-D-RIBITOL (three-letter code: IMH) (formula: C₁₁H₁₄N₄O₄).



Mol	Chain	Residues	Atoms				ZeroOcc	AltConf
3	A	1	Total	C	N	O	0	0
			19	11	4	4		
3	B	1	Total	C	N	O	0	0
			19	11	4	4		

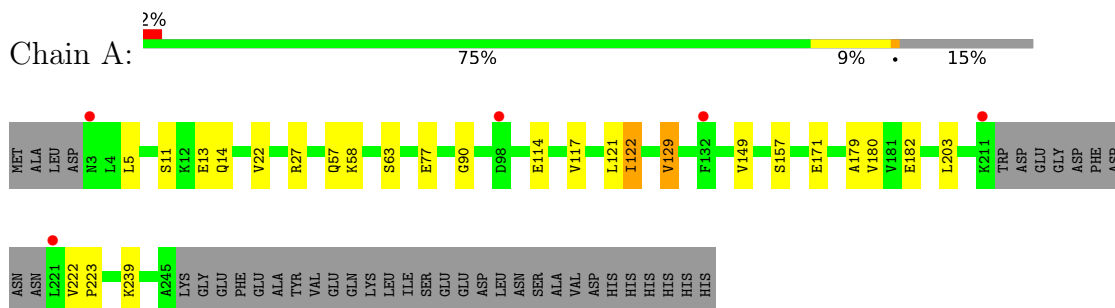
- Molecule 4 is water.

Mol	Chain	Residues	Atoms		ZeroOcc	AltConf
4	A	45	Total	O	0	0
			45	45		
4	B	32	Total	O	0	0
			32	32		

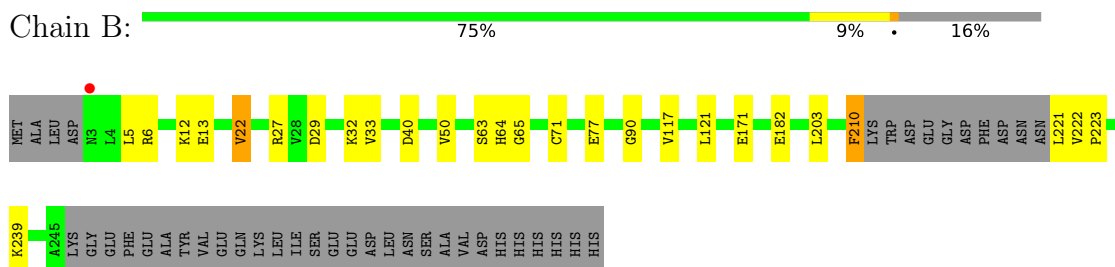
3 Residue-property plots [i](#)

These plots are drawn for all protein, RNA, DNA and oligosaccharide chains in the entry. The first graphic for a chain summarises the proportions of the various outlier classes displayed in the second graphic. The second graphic shows the sequence view annotated by issues in geometry and electron density. Residues are color-coded according to the number of geometric quality criteria for which they contain at least one outlier: green = 0, yellow = 1, orange = 2 and red = 3 or more. A red dot above a residue indicates a poor fit to the electron density ($RSRZ > 2$). Stretches of 2 or more consecutive residues without any outlier are shown as a green connector. Residues present in the sample, but not in the model, are shown in grey.

- Molecule 1: Uridine phosphorylase, putative



- Molecule 1: Uridine phosphorylase, putative



4 Data and refinement statistics

Property	Value	Source
Space group	I 41 3 2	Depositor
Cell constants a, b, c, α , β , γ	234.97Å 234.97Å 234.97Å 90.00° 90.00° 90.00°	Depositor
Resolution (Å)	35.42 – 2.80 34.64 – 2.80	Depositor EDS
% Data completeness (in resolution range)	99.9 (35.42-2.80) 99.9 (34.64-2.80)	Depositor EDS
R_{merge}	0.12	Depositor
R_{sym}	(Not available)	Depositor
$\langle I/\sigma(I) \rangle$ ¹	3.08 (at 2.81Å)	Xtrriage
Refinement program	REFMAC 5.3.0034	Depositor
R, R_{free}	0.165 , 0.202 0.164 , 0.199	Depositor DCC
R_{free} test set	1376 reflections (5.03%)	wwPDB-VP
Wilson B-factor (Å ²)	46.9	Xtrriage
Anisotropy	0.000	Xtrriage
Bulk solvent k_{sol} (e/Å ³), B_{sol} (Å ²)	0.36 , 43.2	EDS
L-test for twinning ²	$\langle L \rangle = 0.49$, $\langle L^2 \rangle = 0.33$	Xtrriage
Estimated twinning fraction	No twinning to report.	Xtrriage
F_o, F_c correlation	0.95	EDS
Total number of atoms	3694	wwPDB-VP
Average B, all atoms (Å ²)	43.0	wwPDB-VP

Xtrriage's analysis on translational NCS is as follows: *The largest off-origin peak in the Patterson function is 1.92% of the height of the origin peak. No significant pseudotranslation is detected.*

¹Intensities estimated from amplitudes.

²Theoretical values of $\langle |L| \rangle$, $\langle L^2 \rangle$ for acentric reflections are 0.5, 0.333 respectively for untwinned datasets, and 0.375, 0.2 for perfectly twinned datasets.

5 Model quality [i](#)

5.1 Standard geometry [i](#)

Bond lengths and bond angles in the following residue types are not validated in this section: IMH, PO4

The Z score for a bond length (or angle) is the number of standard deviations the observed value is removed from the expected value. A bond length (or angle) with $|Z| > 5$ is considered an outlier worth inspection. RMSZ is the root-mean-square of all Z scores of the bond lengths (or angles).

Mol	Chain	Bond lengths		Bond angles	
		RMSZ	# Z >5	RMSZ	# Z >5
1	A	0.55	0/1812	0.68	2/2447 (0.1%)
1	B	0.58	0/1803	0.64	0/2436
All	All	0.57	0/3615	0.66	2/4883 (0.0%)

Chiral center outliers are detected by calculating the chiral volume of a chiral center and verifying if the center is modelled as a planar moiety or with the opposite hand. A planarity outlier is detected by checking planarity of atoms in a peptide group, atoms in a mainchain group or atoms of a sidechain that are expected to be planar.

Mol	Chain	#Chirality outliers	#Planarity outliers
1	A	0	1

There are no bond length outliers.

All (2) bond angle outliers are listed below:

Mol	Chain	Res	Type	Atoms	Z	Observed($^{\circ}$)	Ideal($^{\circ}$)
1	A	122	ILE	CB-CA-C	-5.63	100.35	111.60
1	A	129	VAL	CB-CA-C	-5.02	101.87	111.40

There are no chirality outliers.

All (1) planarity outliers are listed below:

Mol	Chain	Res	Type	Group
1	A	179	ALA	Peptide

5.2 Too-close contacts [i](#)

In the following table, the Non-H and H(model) columns list the number of non-hydrogen atoms and hydrogen atoms in the chain respectively. The H(added) column lists the number of hydrogen

atoms added and optimized by MolProbity. The Clashes column lists the number of clashes within the asymmetric unit, whereas Symm-Clashes lists symmetry-related clashes.

Mol	Chain	Non-H	H(model)	H(added)	Clashes	Symm-Clashes
1	A	1784	0	1833	10	0
1	B	1775	0	1820	11	0
2	A	15	0	0	1	0
2	B	5	0	0	0	0
3	A	19	0	13	1	0
3	B	19	0	13	0	0
4	A	45	0	0	0	0
4	B	32	0	0	0	0
All	All	3694	0	3679	22	0

The all-atom clashscore is defined as the number of clashes found per 1000 atoms (including hydrogen atoms). The all-atom clashscore for this structure is 3.

All (22) close contacts within the same asymmetric unit are listed below, sorted by their clash magnitude.

Atom-1	Atom-2	Interatomic distance (Å)	Clash overlap (Å)
1:A:11:SER:H	1:A:14:GLN:HE21	1.20	0.88
1:A:57:GLN:HA	1:A:57:GLN:NE2	2.17	0.60
3:A:278:IMH:N3	3:A:278:IMH:H2'	2.18	0.58
1:A:114:GLU:HB3	1:A:157:SER:HA	1.87	0.56
1:A:11:SER:N	1:A:14:GLN:HE21	1.99	0.53
1:B:171:GLU:HA	1:B:210:PHE:HZ	1.78	0.48
1:B:5:LEU:HD13	1:B:77:GLU:HB3	1.95	0.48
1:B:64:HIS:HD2	1:B:65:GLY:O	1.97	0.47
1:A:22:VAL:O	1:A:63:SER:HA	2.16	0.46
1:A:5:LEU:HD13	1:A:77:GLU:HB3	1.98	0.46
1:A:11:SER:H	1:A:14:GLN:NE2	2.01	0.45
1:B:40:ASP:HA	1:B:50:VAL:HG22	1.99	0.44
1:B:13:GLU:CD	1:B:13:GLU:H	2.20	0.44
1:A:27:ARG:NH2	2:A:275:PO4:O4	2.51	0.44
1:B:29:ASP:HA	1:B:32:LYS:HE2	2.00	0.44
1:A:222:VAL:HA	1:A:223:PRO:HD3	1.91	0.44
1:B:171:GLU:HA	1:B:210:PHE:CZ	2.53	0.43
1:A:90:GLY:O	1:A:203:LEU:HA	2.20	0.42
1:B:222:VAL:HA	1:B:223:PRO:HD3	1.87	0.41
1:B:22:VAL:O	1:B:63:SER:HA	2.21	0.41
1:B:64:HIS:HB2	1:B:71:CYS:HA	2.03	0.41
1:B:90:GLY:O	1:B:203:LEU:HA	2.21	0.40

There are no symmetry-related clashes.

5.3 Torsion angles [i](#)

5.3.1 Protein backbone [i](#)

In the following table, the Percentiles column shows the percent Ramachandran outliers of the chain as a percentile score with respect to all X-ray entries followed by that with respect to entries of similar resolution.

The Analysed column shows the number of residues for which the backbone conformation was analysed, and the total number of residues.

Mol	Chain	Analysed	Favoured	Allowed	Outliers	Percentiles	
1	A	230/276 (83%)	222 (96%)	8 (4%)	0	100	100
1	B	229/276 (83%)	219 (96%)	10 (4%)	0	100	100
All	All	459/552 (83%)	441 (96%)	18 (4%)	0	100	100

There are no Ramachandran outliers to report.

5.3.2 Protein sidechains [i](#)

In the following table, the Percentiles column shows the percent sidechain outliers of the chain as a percentile score with respect to all X-ray entries followed by that with respect to entries of similar resolution.

The Analysed column shows the number of residues for which the sidechain conformation was analysed, and the total number of residues.

Mol	Chain	Analysed	Rotameric	Outliers	Percentiles	
1	A	198/235 (84%)	187 (94%)	11 (6%)	21	51
1	B	197/235 (84%)	186 (94%)	11 (6%)	21	51
All	All	395/470 (84%)	373 (94%)	22 (6%)	21	51

All (22) residues with a non-rotameric sidechain are listed below:

Mol	Chain	Res	Type
1	A	13	GLU
1	A	58	LYS
1	A	117	VAL
1	A	121	LEU
1	A	122	ILE

Continued on next page...

Continued from previous page...

Mol	Chain	Res	Type
1	A	129	VAL
1	A	149	VAL
1	A	171	GLU
1	A	180	VAL
1	A	182	GLU
1	A	239	LYS
1	B	6	ARG
1	B	12	LYS
1	B	22	VAL
1	B	27	ARG
1	B	33	VAL
1	B	117	VAL
1	B	121	LEU
1	B	182	GLU
1	B	210	PHE
1	B	221	LEU
1	B	239	LYS

Sometimes sidechains can be flipped to improve hydrogen bonding and reduce clashes. All (7) such sidechains are listed below:

Mol	Chain	Res	Type
1	A	14	GLN
1	A	44	ASN
1	A	57	GLN
1	A	119	HIS
1	A	151	ASN
1	B	44	ASN
1	B	64	HIS

5.3.3 RNA [i](#)

There are no RNA molecules in this entry.

5.4 Non-standard residues in protein, DNA, RNA chains [i](#)

There are no non-standard protein/DNA/RNA residues in this entry.

5.5 Carbohydrates [i](#)

There are no monosaccharides in this entry.

5.6 Ligand geometry

6 ligands are modelled in this entry.

In the following table, the Counts columns list the number of bonds (or angles) for which Mogul statistics could be retrieved, the number of bonds (or angles) that are observed in the model and the number of bonds (or angles) that are defined in the Chemical Component Dictionary. The Link column lists molecule types, if any, to which the group is linked. The Z score for a bond length (or angle) is the number of standard deviations the observed value is removed from the expected value. A bond length (or angle) with $|Z| > 2$ is considered an outlier worth inspection. RMSZ is the root-mean-square of all Z scores of the bond lengths (or angles).

Mol	Type	Chain	Res	Link	Bond lengths			Bond angles		
					Counts	RMSZ	# Z > 2	Counts	RMSZ	# Z > 2
3	IMH	B	276	-	18,21,21	2.20	4 (22%)	13,31,31	1.42	2 (15%)
2	PO4	A	276	-	4,4,4	1.11	0	6,6,6	0.83	0
3	IMH	A	278	-	18,21,21	2.29	5 (27%)	13,31,31	1.62	4 (30%)
2	PO4	B	275	-	4,4,4	0.94	0	6,6,6	1.01	0
2	PO4	A	275	-	4,4,4	1.35	0	6,6,6	0.38	0
2	PO4	A	277	-	4,4,4	1.23	0	6,6,6	0.95	0

In the following table, the Chirals column lists the number of chiral outliers, the number of chiral centers analysed, the number of these observed in the model and the number defined in the Chemical Component Dictionary. Similar counts are reported in the Torsion and Rings columns. '-' means no outliers of that kind were identified.

Mol	Type	Chain	Res	Link	Chirals	Torsions	Rings
3	IMH	B	276	-	-	2/2/22/22	0/3/3/3
3	IMH	A	278	-	-	2/2/22/22	0/3/3/3

All (9) bond length outliers are listed below:

Mol	Chain	Res	Type	Atoms	Z	Observed(Å)	Ideal(Å)
3	A	278	IMH	O6-C6	6.60	1.36	1.23
3	B	276	IMH	O6-C6	6.51	1.36	1.23
3	B	276	IMH	C5-C6	-4.16	1.39	1.47
3	A	278	IMH	C5-C6	-4.09	1.39	1.47
3	B	276	IMH	C2-N3	3.13	1.35	1.29
3	A	278	IMH	C2-N3	2.87	1.35	1.29
3	A	278	IMH	C9-C1'	-2.70	1.47	1.52
3	A	278	IMH	C4'-N4'	-2.69	1.44	1.48
3	B	276	IMH	C4'-N4'	-2.18	1.45	1.48

All (6) bond angle outliers are listed below:

Mol	Chain	Res	Type	Atoms	Z	Observed(°)	Ideal(°)
3	B	276	IMH	C5-C6-N1	2.85	118.99	113.95
3	A	278	IMH	C5-C6-N1	2.68	118.68	113.95
3	A	278	IMH	C5'-C4'-C3'	-2.40	109.43	113.67
3	B	276	IMH	O6-C6-C5	-2.34	119.80	124.37
3	A	278	IMH	O6-C6-C5	-2.24	120.00	124.37
3	A	278	IMH	C2'-C3'-C4'	2.02	105.75	102.55

There are no chirality outliers.

All (4) torsion outliers are listed below:

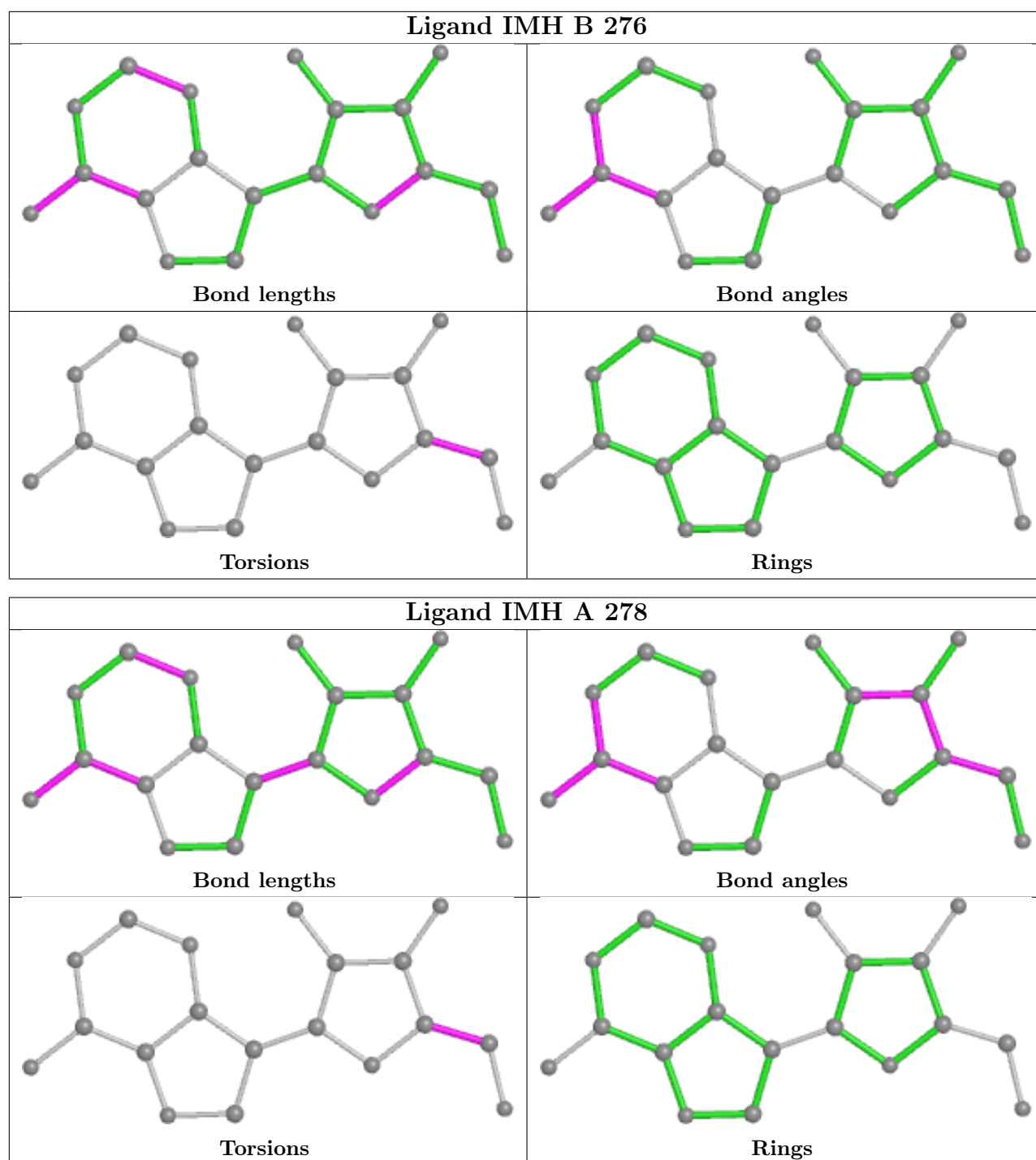
Mol	Chain	Res	Type	Atoms
3	A	278	IMH	N4'-C4'-C5'-O5'
3	A	278	IMH	C3'-C4'-C5'-O5'
3	B	276	IMH	N4'-C4'-C5'-O5'
3	B	276	IMH	C3'-C4'-C5'-O5'

There are no ring outliers.

2 monomers are involved in 2 short contacts:

Mol	Chain	Res	Type	Clashes	Symm-Clashes
3	A	278	IMH	1	0
2	A	275	PO4	1	0

The following is a two-dimensional graphical depiction of Mogul quality analysis of bond lengths, bond angles, torsion angles, and ring geometry for all instances of the Ligand of Interest. In addition, ligands with molecular weight > 250 and outliers as shown on the validation Tables will also be included. For torsion angles, if less than 5% of the Mogul distribution of torsion angles is within 10 degrees of the torsion angle in question, then that torsion angle is considered an outlier. Any bond that is central to one or more torsion angles identified as an outlier by Mogul will be highlighted in the graph. For rings, the root-mean-square deviation (RMSD) between the ring in question and similar rings identified by Mogul is calculated over all ring torsion angles. If the average RMSD is greater than 60 degrees and the minimal RMSD between the ring in question and any Mogul-identified rings is also greater than 60 degrees, then that ring is considered an outlier. The outliers are highlighted in purple. The color gray indicates Mogul did not find sufficient equivalents in the CSD to analyse the geometry.



5.7 Other polymers [i](#)

There are no such residues in this entry.

5.8 Polymer linkage issues [i](#)

There are no chain breaks in this entry.

6 Fit of model and data [i](#)

6.1 Protein, DNA and RNA chains [i](#)

In the following table, the column labelled ‘#RSRZ> 2’ contains the number (and percentage) of RSRZ outliers, followed by percent RSRZ outliers for the chain as percentile scores relative to all X-ray entries and entries of similar resolution. The OWAB column contains the minimum, median, 95th percentile and maximum values of the occupancy-weighted average B-factor per residue. The column labelled ‘Q< 0.9’ lists the number of (and percentage) of residues with an average occupancy less than 0.9.

Mol	Chain	Analysed	<RSRZ>	#RSRZ>2	OWAB(Å ²)	Q<0.9
1	A	234/276 (84%)	-0.34	5 (2%) 63 54	24, 40, 64, 91	1 (0%)
1	B	233/276 (84%)	-0.50	1 (0%) 92 91	24, 41, 67, 92	0
All	All	467/552 (84%)	-0.42	6 (1%) 77 72	24, 41, 66, 92	1 (0%)

All (6) RSRZ outliers are listed below:

Mol	Chain	Res	Type	RSRZ
1	A	132	PHE	5.0
1	A	3	ASN	2.4
1	A	211	LYS	2.4
1	A	221	LEU	2.4
1	B	3	ASN	2.1
1	A	98	ASP	2.1

6.2 Non-standard residues in protein, DNA, RNA chains [i](#)

There are no non-standard protein/DNA/RNA residues in this entry.

6.3 Carbohydrates [i](#)

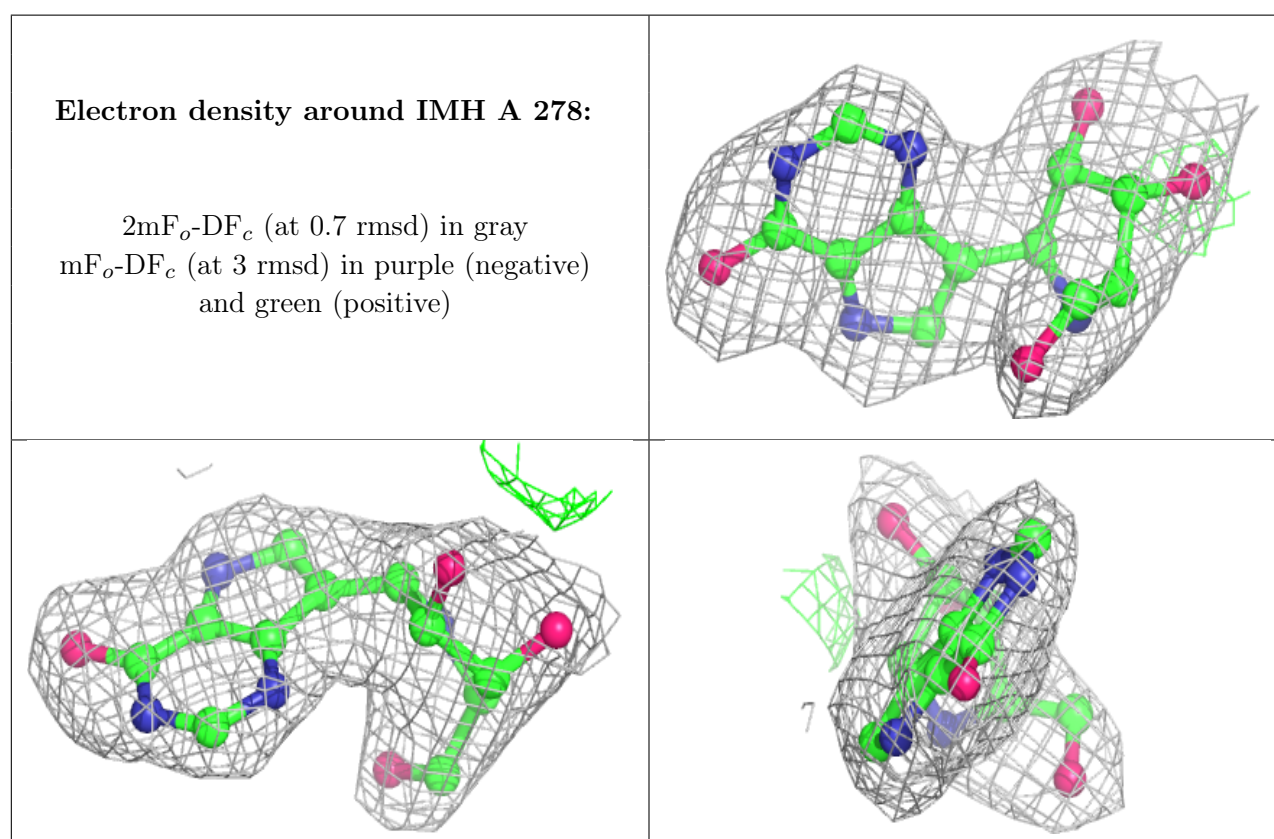
There are no monosaccharides in this entry.

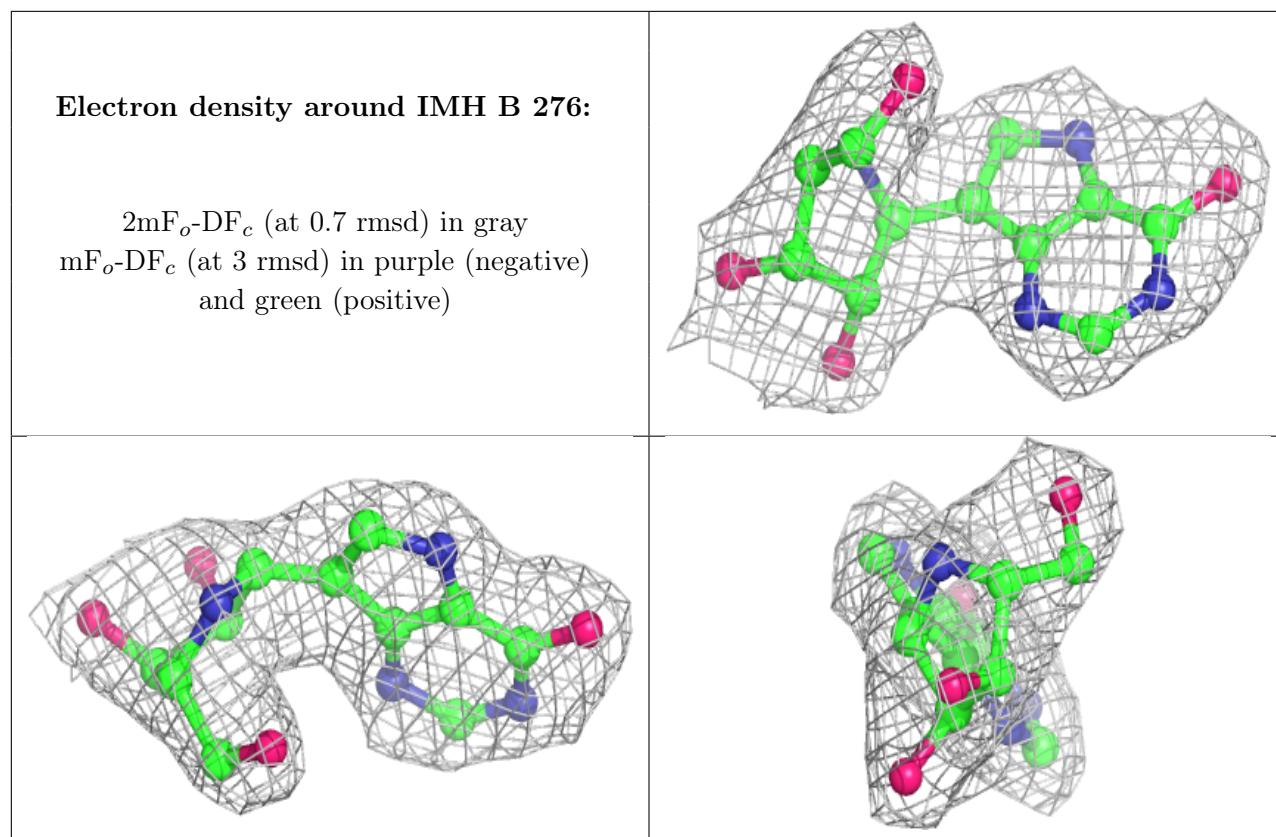
6.4 Ligands [i](#)

In the following table, the Atoms column lists the number of modelled atoms in the group and the number defined in the chemical component dictionary. The B-factors column lists the minimum, median, 95th percentile and maximum values of B factors of atoms in the group. The column labelled ‘Q< 0.9’ lists the number of atoms with occupancy less than 0.9.

Mol	Type	Chain	Res	Atoms	RSCC	RSR	B-factors(\AA^2)	Q<0.9
2	PO4	A	276	5/5	0.90	0.17	41,59,68,72	0
2	PO4	A	277	5/5	0.91	0.16	55,62,66,68	0
2	PO4	A	275	5/5	0.97	0.18	49,49,55,55	0
2	PO4	B	275	5/5	0.97	0.20	44,50,53,58	0
3	IMH	A	278	19/19	0.98	0.13	38,41,45,46	0
3	IMH	B	276	19/19	0.98	0.13	39,41,49,49	0

The following is a graphical depiction of the model fit to experimental electron density of all instances of the Ligand of Interest. In addition, ligands with molecular weight > 250 and outliers as shown on the geometry validation Tables will also be included. Each fit is shown from different orientation to approximate a three-dimensional view.





6.5 Other polymers [i](#)

There are no such residues in this entry.