



# Full wwPDB X-ray Structure Validation Report ⓘ

Oct 25, 2022 – 12:58 PM EDT

PDB ID : 7FLF  
Title : PanDDA analysis group deposition – Aar2/RNaseH in complex with fragment P05C06 from the F2X-Universal Library  
Authors : Barthel, T.; Wollenhaupt, J.; Lima, G.M.A.; Wahl, M.C.; Weiss, M.S.  
Deposited on : 2022-08-26  
Resolution : 1.54 Å(reported)

This is a Full wwPDB X-ray Structure Validation Report for a publicly released PDB entry.

We welcome your comments at [validation@mail.wwpdb.org](mailto:validation@mail.wwpdb.org)

A user guide is available at

<https://www.wwpdb.org/validation/2017/XrayValidationReportHelp>

with specific help available everywhere you see the ⓘ symbol.

The types of validation reports are described at

<http://www.wwpdb.org/validation/2017/FAQs#types>.

---

The following versions of software and data (see [references ⓘ](#)) were used in the production of this report:

MolProbity : 4.02b-467  
Mogul : 1.8.5 (274361), CSD as541be (2020)  
Xtriage (Phenix) : 1.13  
EDS : 2.31.2  
Percentile statistics : 20191225.v01 (using entries in the PDB archive December 25th 2019)  
Refmac : 5.8.0158  
CCP4 : 7.0.044 (Gargrove)  
Ideal geometry (proteins) : Engh & Huber (2001)  
Ideal geometry (DNA, RNA) : Parkinson et al. (1996)  
Validation Pipeline (wwPDB-VP) : 2.31.2

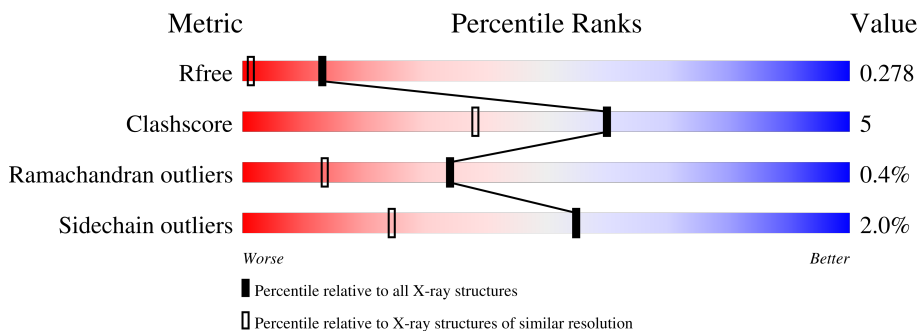
# 1 Overall quality at a glance

The following experimental techniques were used to determine the structure:

*X-RAY DIFFRACTION*

The reported resolution of this entry is 1.54 Å.

Percentile scores (ranging between 0-100) for global validation metrics of the entry are shown in the following graphic. The table shows the number of entries on which the scores are based.



| Metric                | Whole archive<br>(#Entries) | Similar resolution<br>(#Entries, resolution range(Å)) |
|-----------------------|-----------------------------|---|
| $R_{free}$            | 130704                      | 2556 (1.56-1.52)                                      |
| Clashscore            | 141614                      | 2634 (1.56-1.52)                                      |
| Ramachandran outliers | 138981                      | 2580 (1.56-1.52)                                      |
| Sidechain outliers    | 138945                      | 2577 (1.56-1.52)                                      |

The table below summarises the geometric issues observed across the polymeric chains and their fit to the electron density. The red, orange, yellow and green segments of the lower bar indicate the fraction of residues that contain outliers for  $\geq 3$ , 2, 1 and 0 types of geometric quality criteria respectively. A grey segment represents the fraction of residues that are not modelled. The numeric value for each fraction is indicated below the corresponding segment, with a dot representing fractions  $\leq 5\%$

| Mol | Chain | Length | Quality of chain |
|-----|-------|--------|------------------|
| 1   | A     | 258    |                  |
| 2   | B     | 308    |                  |

## 2 Entry composition

There are 4 unique types of molecules in this entry. The entry contains 9264 atoms, of which 4524 are hydrogens and 0 are deuteriums.

In the tables below, the ZeroOcc column contains the number of atoms modelled with zero occupancy, the AltConf column contains the number of residues with at least one atom in alternate conformation and the Trace column contains the number of residues modelled with at most 2 atoms.

- Molecule 1 is a protein called Pre-mRNA-splicing factor 8.

| Mol | Chain | Residues | Atoms |      |      |     |     | ZeroOcc | AltConf | Trace |   |
|-----|-------|----------|-------|------|------|-----|-----|---------|---------|-------|---|
|     |       |          | Total | C    | H    | N   | O   |         |         |       | S |
| 1   | A     | 237      | 4068  | 1287 | 2060 | 336 | 373 | 12      | 18      | 21    | 0 |

There are 3 discrepancies between the modelled and reference sequences:

| Chain | Residue | Modelled | Actual | Comment        | Reference  |
|-------|---------|----------|--------|----------------|------------|
| A     | 1833    | GLY      | -      | expression tag | UNP P33334 |
| A     | 1834    | ALA      | -      | expression tag | UNP P33334 |
| A     | 1835    | MET      | -      | expression tag | UNP P33334 |

- Molecule 2 is a protein called A1 cistron-splicing factor AAR2.

| Mol | Chain | Residues | Atoms |      |      |     |     | ZeroOcc | AltConf | Trace |   |
|-----|-------|----------|-------|------|------|-----|-----|---------|---------|-------|---|
|     |       |          | Total | C    | H    | N   | O   |         |         |       | S |
| 2   | B     | 300      | 5044  | 1654 | 2464 | 421 | 485 | 20      | 11      | 17    | 0 |

There are 20 discrepancies between the modelled and reference sequences:

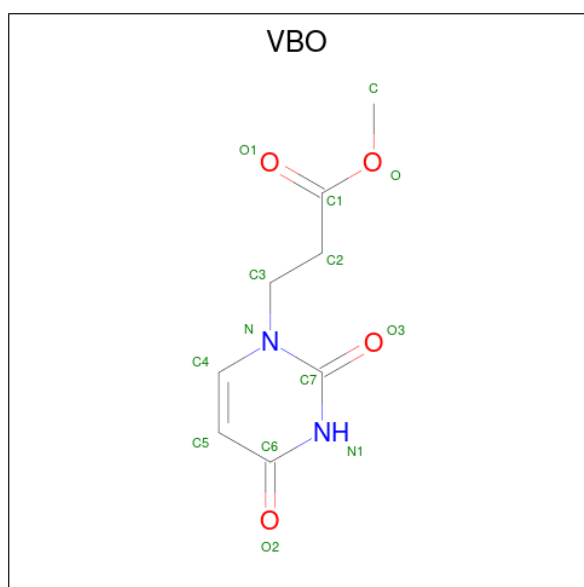
| Chain | Residue | Modelled | Actual | Comment        | Reference  |
|-------|---------|----------|--------|----------------|------------|
| B     | -3      | GLY      | -      | expression tag | UNP P32357 |
| B     | -2      | ALA      | -      | expression tag | UNP P32357 |
| B     | -1      | MET      | -      | expression tag | UNP P32357 |
| B     | 0       | ALA      | -      | expression tag | UNP P32357 |
| B     | 166     | SER      | LEU    | conflict       | UNP P32357 |
| B     | 167     | SER      | LYS    | conflict       | UNP P32357 |
| B     | ?       | -        | LEU    | deletion       | UNP P32357 |
| B     | ?       | -        | GLN    | deletion       | UNP P32357 |
| B     | ?       | -        | LYS    | deletion       | UNP P32357 |
| B     | ?       | -        | ALA    | deletion       | UNP P32357 |
| B     | ?       | -        | GLY    | deletion       | UNP P32357 |
| B     | ?       | -        | SER    | deletion       | UNP P32357 |
| B     | ?       | -        | LYS    | deletion       | UNP P32357 |

*Continued on next page...*

Continued from previous page...

| Chain | Residue | Modelled | Actual | Comment  | Reference  |
|-------|---------|----------|--------|----------|------------|
| B     | ?       | -        | MET    | deletion | UNP P32357 |
| B     | ?       | -        | GLU    | deletion | UNP P32357 |
| B     | ?       | -        | ALA    | deletion | UNP P32357 |
| B     | ?       | -        | LYS    | deletion | UNP P32357 |
| B     | ?       | -        | ASN    | deletion | UNP P32357 |
| B     | ?       | -        | GLU    | deletion | UNP P32357 |
| B     | 170     | SER      | ASP    | conflict | UNP P32357 |

- Molecule 3 is methyl 3-(2,4-dioxo-3,4-dihydropyrimidin-1(2H)-yl)propanoate (three-letter code: VBO) (formula: C<sub>8</sub>H<sub>10</sub>N<sub>2</sub>O<sub>4</sub>).



| Mol | Chain | Residues | Atoms |   |   |   | ZeroOcc | AltConf |
|-----|-------|----------|-------|---|---|---|---------|---------|
| 3   | A     | 1        | Total | C | N | O | 0       | 0       |
|     |       |          | 14    | 8 | 2 | 4 |         |         |
| 3   | A     | 1        | Total | C | N | O | 0       | 0       |
|     |       |          | 14    | 8 | 2 | 4 |         |         |
| 3   | B     | 1        | Total | C | N | O | 0       | 0       |
|     |       |          | 14    | 8 | 2 | 4 |         |         |

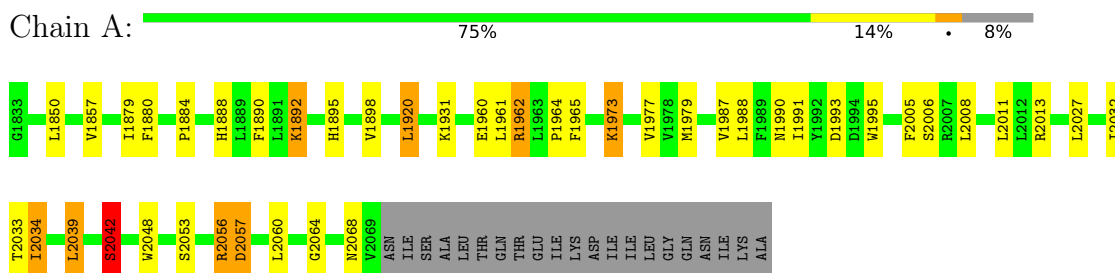
- Molecule 4 is water.

| Mol | Chain | Residues | Atoms |    | ZeroOcc | AltConf |
|-----|-------|----------|-------|----|---------|---------|
| 4   | A     | 52       | Total | O  | 0       | 0       |
|     |       |          | 52    | 52 |         |         |
| 4   | B     | 58       | Total | O  | 0       | 0       |
|     |       |          | 58    | 58 |         |         |

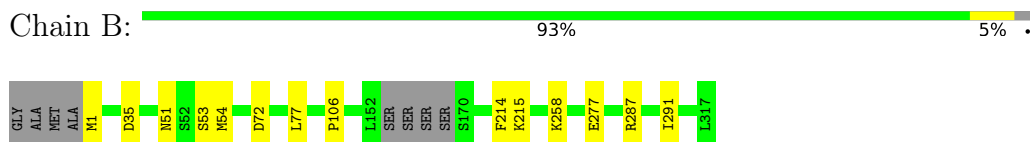
### 3 Residue-property plots [i](#)

These plots are drawn for all protein, RNA, DNA and oligosaccharide chains in the entry. The first graphic for a chain summarises the proportions of the various outlier classes displayed in the second graphic. The second graphic shows the sequence view annotated by issues in geometry. Residues are color-coded according to the number of geometric quality criteria for which they contain at least one outlier: green = 0, yellow = 1, orange = 2 and red = 3 or more. Stretches of 2 or more consecutive residues without any outlier are shown as a green connector. Residues present in the sample, but not in the model, are shown in grey.

- Molecule 1: Pre-mRNA-splicing factor 8



- Molecule 2: A1 cistron-splicing factor AAR2



## 4 Data and refinement statistics

| Property  | Value   | Source           |
|---|---|------------------|
| Space group   | C 1 2 1   | Depositor        |
| Cell constants<br>a, b, c, $\alpha$ , $\beta$ , $\gamma$                | 88.22Å 81.80Å 93.45Å<br>90.00° 108.19° 90.00°               | Depositor        |
| Resolution (Å)  | 44.39 – 1.54<br>44.61 – 1.54                                | Depositor<br>EDS |
| % Data completeness<br>(in resolution range)                            | 99.2 (44.39-1.54)<br>99.4 (44.61-1.54)                      | Depositor<br>EDS |
| $R_{merge}$   | (Not available)   | Depositor        |
| $R_{sym}$   | (Not available)   | Depositor        |
| $\langle I/\sigma(I) \rangle$ <sup>1</sup>                              | 0.97 (at 1.54Å)   | Xtrriage         |
| Refinement program  | PHENIX 1.17.1_3660  | Depositor        |
| R, $R_{free}$   | 0.196 , 0.248<br>0.248 , 0.278                              | Depositor<br>DCC |
| $R_{free}$ test set   | 2100 reflections (2.25%)                                    | wwPDB-VP         |
| Wilson B-factor (Å <sup>2</sup> )                                       | 31.4  | Xtrriage         |
| Anisotropy  | 0.424   | Xtrriage         |
| Bulk solvent $k_{sol}$ (e/Å <sup>3</sup> ), $B_{sol}$ (Å <sup>2</sup> ) | 0.40 , 44.6   | EDS              |
| L-test for twinning <sup>2</sup>  | $\langle  L  \rangle = 0.50$ , $\langle L^2 \rangle = 0.33$ | Xtrriage         |
| Estimated twinning fraction   | No twinning to report.                                      | Xtrriage         |
| $F_o, F_c$ correlation  | 0.95  | EDS              |
| Total number of atoms   | 9264  | wwPDB-VP         |
| Average B, all atoms (Å <sup>2</sup> )                                  | 51.0  | wwPDB-VP         |

Xtrriage's analysis on translational NCS is as follows: *The largest off-origin peak in the Patterson function is 5.72% of the height of the origin peak. No significant pseudotranslation is detected.*

<sup>1</sup>Intensities estimated from amplitudes.

<sup>2</sup>Theoretical values of  $\langle |L| \rangle$ ,  $\langle L^2 \rangle$  for acentric reflections are 0.5, 0.333 respectively for untwinned datasets, and 0.375, 0.2 for perfectly twinned datasets.

## 5 Model quality i

### 5.1 Standard geometry i

Bond lengths and bond angles in the following residue types are not validated in this section: VBO

The Z score for a bond length (or angle) is the number of standard deviations the observed value is removed from the expected value. A bond length (or angle) with  $|Z| > 5$  is considered an outlier worth inspection. RMSZ is the root-mean-square of all Z scores of the bond lengths (or angles).

| Mol | Chain | Bond lengths |               | Bond angles |                |
|-----|-------|--------------|---------------|-------------|----------------|
|     |       | RMSZ         | # Z  >5       | RMSZ        | # Z  >5        |
| 1   | A     | 0.70         | 6/2149 (0.3%) | 0.90        | 10/2911 (0.3%) |
| 2   | B     | 0.56         | 1/2739 (0.0%) | 0.68        | 0/3699         |
| All | All   | 0.63         | 7/4888 (0.1%) | 0.79        | 10/6610 (0.2%) |

Chiral center outliers are detected by calculating the chiral volume of a chiral center and verifying if the center is modelled as a planar moiety or with the opposite hand. A planarity outlier is detected by checking planarity of atoms in a peptide group, atoms in a mainchain group or atoms of a sidechain that are expected to be planar.

| Mol | Chain | #Chirality outliers | #Planarity outliers |
|-----|-------|---------------------|---------------------|
| 1   | A     | 0                   | 7                   |

All (7) bond length outliers are listed below:

| Mol | Chain | Res     | Type | Atoms | Z    | Observed(Å) | Ideal(Å) |
|-----|-------|---------|------|-------|------|-------------|----------|
| 1   | A     | 2056[A] | ARG  | C-N   | 9.20 | 1.55        | 1.34     |
| 1   | A     | 2056[B] | ARG  | C-N   | 9.20 | 1.55        | 1.34     |
| 2   | B     | 72      | ASP  | C-N   | 8.52 | 1.50        | 1.34     |
| 1   | A     | 2057[A] | ASP  | N-CA  | 6.62 | 1.59        | 1.46     |
| 1   | A     | 2057[B] | ASP  | N-CA  | 6.62 | 1.59        | 1.46     |
| 1   | A     | 1961[A] | LEU  | N-CA  | 5.32 | 1.56        | 1.46     |
| 1   | A     | 1961[B] | LEU  | N-CA  | 5.32 | 1.56        | 1.46     |

All (10) bond angle outliers are listed below:

| Mol | Chain | Res     | Type | Atoms   | Z     | Observed(°) | Ideal(°) |
|-----|-------|---------|------|---------|-------|-------------|----------|
| 1   | A     | 2056[A] | ARG  | C-N-CA  | 8.93  | 144.02      | 121.70   |
| 1   | A     | 2056[B] | ARG  | C-N-CA  | 8.93  | 144.02      | 121.70   |
| 1   | A     | 1973    | LYS  | CB-CA-C | -7.04 | 96.33       | 110.40   |
| 1   | A     | 2034    | ILE  | N-CA-C  | -7.02 | 92.05       | 111.00   |

*Continued on next page...*

Continued from previous page...

| Mol | Chain | Res     | Type | Atoms   | Z     | Observed(°) | Ideal(°) |
|-----|-------|---------|------|---------|-------|-------------|----------|
| 1   | A     | 1993    | ASP  | CB-CA-C | 6.68  | 123.76      | 110.40   |
| 1   | A     | 2057[A] | ASP  | O-C-N   | -5.61 | 113.72      | 122.70   |
| 1   | A     | 2057[B] | ASP  | O-C-N   | -5.61 | 113.72      | 122.70   |
| 1   | A     | 2057[A] | ASP  | CA-C-O  | 5.39  | 131.41      | 120.10   |
| 1   | A     | 2057[B] | ASP  | CA-C-O  | 5.39  | 131.41      | 120.10   |
| 1   | A     | 1892    | LYS  | N-CA-CB | 5.01  | 119.61      | 110.60   |

There are no chirality outliers.

All (7) planarity outliers are listed below:

| Mol | Chain | Res     | Type | Group     |
|-----|-------|---------|------|-----------|
| 1   | A     | 1931[A] | LYS  | Mainchain |
| 1   | A     | 1931[B] | LYS  | Mainchain |
| 1   | A     | 1960[A] | GLU  | Mainchain |
| 1   | A     | 1960[B] | GLU  | Mainchain |
| 1   | A     | 2033    | THR  | Mainchain |
| 1   | A     | 2056[A] | ARG  | Mainchain |
| 1   | A     | 2056[B] | ARG  | Mainchain |

## 5.2 Too-close contacts [i](#)

In the following table, the Non-H and H(model) columns list the number of non-hydrogen atoms and hydrogen atoms in the chain respectively. The H(added) column lists the number of hydrogen atoms added and optimized by MolProbity. The Clashes column lists the number of clashes within the asymmetric unit, whereas Symm-Clashes lists symmetry-related clashes.

| Mol | Chain | Non-H | H(model) | H(added) | Clashes | Symm-Clashes |
|-----|-------|-------|----------|----------|---------|--------------|
| 1   | A     | 2008  | 2060     | 1974     | 34      | 0            |
| 2   | B     | 2580  | 2464     | 2398     | 8       | 0            |
| 3   | A     | 28    | 0        | 0        | 0       | 0            |
| 3   | B     | 14    | 0        | 0        | 0       | 0            |
| 4   | A     | 52    | 0        | 0        | 1       | 0            |
| 4   | B     | 58    | 0        | 0        | 2       | 0            |
| All | All   | 4740  | 4524     | 4372     | 42      | 0            |

The all-atom clashscore is defined as the number of clashes found per 1000 atoms (including hydrogen atoms). The all-atom clashscore for this structure is 5.

All (42) close contacts within the same asymmetric unit are listed below, sorted by their clash magnitude.



| Atom-1            | Atom-2               | Interatomic distance (Å) | Clash overlap (Å) |
|-------------------|----------------------|--------------------------|-------------------|
| 1:A:1977:VAL:HG21 | 1:A:1987:VAL:HG21    | 1.61                     | 0.81              |
| 1:A:1880:PHE:CE1  | 1:A:1965:PHE:CG      | 2.72                     | 0.78              |
| 1:A:1920:LEU:O    | 1:A:1920:LEU:HD12    | 1.84                     | 0.78              |
| 1:A:1880:PHE:CD1  | 1:A:1965:PHE:HB3     | 2.20                     | 0.77              |
| 1:A:1988:LEU:HD12 | 1:A:1988:LEU:O       | 1.85                     | 0.76              |
| 1:A:1920:LEU:HD12 | 1:A:1920:LEU:C       | 2.13                     | 0.69              |
| 1:A:2064:GLY:O    | 1:A:2068:ASN:N       | 2.27                     | 0.66              |
| 1:A:1977:VAL:CG2  | 1:A:1987:VAL:HG21    | 2.28                     | 0.61              |
| 1:A:1880:PHE:CE1  | 1:A:1965:PHE:CD1     | 2.88                     | 0.61              |
| 1:A:1857:VAL:HG22 | 1:A:1879:ILE:HG13    | 1.83                     | 0.61              |
| 1:A:1880:PHE:CE1  | 1:A:1965:PHE:HB3     | 2.39                     | 0.57              |
| 2:B:1:MET:HB3     | 2:B:35:ASP:HA        | 1.88                     | 0.54              |
| 1:A:1890:PHE:N    | 1:A:1890:PHE:CD1     | 2.74                     | 0.54              |
| 1:A:1884:PRO:HB3  | 1:A:2005:PHE:CE1     | 2.42                     | 0.54              |
| 2:B:54[A]:MET:HE1 | 4:B:556:HOH:O        | 2.07                     | 0.54              |
| 1:A:2060:LEU:HB2  | 4:A:2250:HOH:O       | 2.08                     | 0.54              |
| 2:B:287:ARG:O     | 2:B:291:ILE:HD13     | 2.09                     | 0.53              |
| 1:A:1888:HIS:HA   | 1:A:1990:ASN:HA      | 1.92                     | 0.52              |
| 2:B:51:ASN:ND2    | 2:B:53:SER:O         | 2.43                     | 0.51              |
| 1:A:1884:PRO:CB   | 1:A:2005:PHE:CE1     | 2.95                     | 0.50              |
| 2:B:258:LYS:HD2   | 2:B:258:LYS:H        | 1.75                     | 0.50              |
| 1:A:1888:HIS:CE1  | 1:A:1990:ASN:HB2     | 2.48                     | 0.48              |
| 1:A:1977:VAL:HG11 | 1:A:1987:VAL:HG11    | 1.95                     | 0.48              |
| 1:A:2013:ARG:O    | 1:A:2013:ARG:HD3     | 2.13                     | 0.48              |
| 1:A:1884:PRO:HB3  | 1:A:2005:PHE:HE1     | 1.80                     | 0.47              |
| 1:A:1995:TRP:CZ2  | 1:A:2048:TRP:CZ2     | 3.02                     | 0.47              |
| 1:A:1880:PHE:CZ   | 1:A:1965:PHE:CD1     | 3.03                     | 0.47              |
| 1:A:2027:LEU:CD2  | 1:A:2034:ILE:HD11    | 2.45                     | 0.47              |
| 1:A:1880:PHE:CE1  | 1:A:1965:PHE:CB      | 2.98                     | 0.47              |
| 2:B:1:MET:N       | 4:B:503:HOH:O        | 2.48                     | 0.46              |
| 1:A:2032:ILE:HG23 | 1:A:2042:SER:O       | 2.15                     | 0.46              |
| 1:A:2027:LEU:HD21 | 1:A:2034:ILE:HD11    | 1.98                     | 0.46              |
| 1:A:1879:ILE:HD12 | 1:A:1892:LYS:HB3     | 1.98                     | 0.45              |
| 1:A:2039:LEU:HD23 | 1:A:2039:LEU:N       | 2.31                     | 0.45              |
| 1:A:1991:ILE:CG2  | 1:A:2008:LEU:HD22    | 2.48                     | 0.44              |
| 1:A:1884:PRO:HB2  | 1:A:2005:PHE:CD1     | 2.54                     | 0.43              |
| 2:B:277:GLU:CD    | 2:B:277:GLU:H        | 2.23                     | 0.42              |
| 1:A:2053[B]:SER:O | 1:A:2057[B]:ASP:HB2  | 2.19                     | 0.42              |
| 1:A:1895:HIS:O    | 1:A:1898[A]:VAL:HG22 | 2.19                     | 0.42              |
| 1:A:1962:ARG:H    | 1:A:1962:ARG:HG2     | 1.72                     | 0.41              |
| 2:B:214:PHE:O     | 2:B:215:LYS:HB2      | 2.21                     | 0.40              |
| 1:A:2011:LEU:HD23 | 1:A:2011:LEU:HA      | 1.94                     | 0.40              |

There are no symmetry-related clashes.

## 5.3 Torsion angles [i](#)

### 5.3.1 Protein backbone [i](#)

In the following table, the Percentiles column shows the percent Ramachandran outliers of the chain as a percentile score with respect to all X-ray entries followed by that with respect to entries of similar resolution.

The Analysed column shows the number of residues for which the backbone conformation was analysed, and the total number of residues.

| Mol | Chain | Analysed       | Favoured  | Allowed | Outliers | Percentiles |    |
|-----|-------|----------------|-----------|---------|----------|-------------|----|
| 1   | A     | 258/258 (100%) | 250 (97%) | 7 (3%)  | 1 (0%)   | 34          | 13 |
| 2   | B     | 315/308 (102%) | 305 (97%) | 9 (3%)  | 1 (0%)   | 41          | 19 |
| All | All   | 573/566 (101%) | 555 (97%) | 16 (3%) | 2 (0%)   | 34          | 19 |

All (2) Ramachandran outliers are listed below:

| Mol | Chain | Res  | Type |
|-----|-------|------|------|
| 1   | A     | 2042 | SER  |
| 2   | B     | 106  | PRO  |

### 5.3.2 Protein sidechains [i](#)

In the following table, the Percentiles column shows the percent sidechain outliers of the chain as a percentile score with respect to all X-ray entries followed by that with respect to entries of similar resolution.

The Analysed column shows the number of residues for which the sidechain conformation was analysed, and the total number of residues.

| Mol | Chain | Analysed       | Rotameric  | Outliers | Percentiles |    |
|-----|-------|----------------|------------|----------|-------------|----|
| 1   | A     | 237/233 (102%) | 226 (95%)  | 11 (5%)  | 27          | 4  |
| 2   | B     | 294/284 (104%) | 293 (100%) | 1 (0%)   | 92          | 84 |
| All | All   | 531/517 (103%) | 519 (98%)  | 12 (2%)  | 55          | 20 |

All (12) residues with a non-rotameric sidechain are listed below:

| Mol | Chain | Res  | Type |
|-----|-------|------|------|
| 1   | A     | 1850 | LEU  |

*Continued on next page...*

*Continued from previous page...*

| Mol | Chain | Res     | Type |
|-----|-------|---------|------|
| 1   | A     | 1920    | LEU  |
| 1   | A     | 1962    | ARG  |
| 1   | A     | 1964    | PRO  |
| 1   | A     | 1973    | LYS  |
| 1   | A     | 1979[A] | MET  |
| 1   | A     | 1979[B] | MET  |
| 1   | A     | 1979[C] | MET  |
| 1   | A     | 2006    | SER  |
| 1   | A     | 2039    | LEU  |
| 1   | A     | 2042    | SER  |
| 2   | B     | 77      | LEU  |

Sometimes sidechains can be flipped to improve hydrogen bonding and reduce clashes. All (3) such sidechains are listed below:

| Mol | Chain | Res | Type |
|-----|-------|-----|------|
| 2   | B     | 51  | ASN  |
| 2   | B     | 70  | GLN  |
| 2   | B     | 91  | ASN  |

### 5.3.3 RNA [i](#)

There are no RNA molecules in this entry.

## 5.4 Non-standard residues in protein, DNA, RNA chains [i](#)

There are no non-standard protein/DNA/RNA residues in this entry.

## 5.5 Carbohydrates [i](#)

There are no monosaccharides in this entry.

## 5.6 Ligand geometry [i](#)

3 ligands are modelled in this entry.

In the following table, the Counts columns list the number of bonds (or angles) for which Mogul statistics could be retrieved, the number of bonds (or angles) that are observed in the model and the number of bonds (or angles) that are defined in the Chemical Component Dictionary. The Link column lists molecule types, if any, to which the group is linked. The Z score for a bond

length (or angle) is the number of standard deviations the observed value is removed from the expected value. A bond length (or angle) with  $|Z| > 2$  is considered an outlier worth inspection. RMSZ is the root-mean-square of all Z scores of the bond lengths (or angles).

| Mol | Type | Chain | Res  | Link | Bond lengths |      |          | Bond angles |      |          |
|-----|------|-------|------|------|--------------|------|----------|-------------|------|----------|
|     |      |       |      |      | Counts       | RMSZ | # Z  > 2 | Counts      | RMSZ | # Z  > 2 |
| 3   | VBO  | A     | 2102 | -    | 14,14,14     | 1.08 | 2 (14%)  | 18,18,18    | 1.78 | 6 (33%)  |
| 3   | VBO  | B     | 401  | -    | 14,14,14     | 2.03 | 5 (35%)  | 18,18,18    | 2.03 | 7 (38%)  |
| 3   | VBO  | A     | 2101 | -    | 14,14,14     | 1.51 | 3 (21%)  | 18,18,18    | 1.63 | 4 (22%)  |

In the following table, the Chirals column lists the number of chiral outliers, the number of chiral centers analysed, the number of these observed in the model and the number defined in the Chemical Component Dictionary. Similar counts are reported in the Torsion and Rings columns. '-' means no outliers of that kind were identified.

| Mol | Type | Chain | Res  | Link | Chirals | Torsions | Rings   |
|-----|------|-------|------|------|---------|----------|---------|
| 3   | VBO  | A     | 2102 | -    | -       | 2/7/7/7  | 0/1/1/1 |
| 3   | VBO  | B     | 401  | -    | -       | 0/7/7/7  | 0/1/1/1 |
| 3   | VBO  | A     | 2101 | -    | -       | 3/7/7/7  | 0/1/1/1 |

All (10) bond length outliers are listed below:

| Mol | Chain | Res  | Type | Atoms | Z     | Observed(Å) | Ideal(Å) |
|-----|-------|------|------|-------|-------|-------------|----------|
| 3   | B     | 401  | VBO  | C7-N1 | 3.88  | 1.44        | 1.38     |
| 3   | B     | 401  | VBO  | O3-C7 | -3.58 | 1.16        | 1.23     |
| 3   | A     | 2101 | VBO  | C7-N  | 3.21  | 1.42        | 1.37     |
| 3   | B     | 401  | VBO  | O-C   | -2.85 | 1.38        | 1.45     |
| 3   | A     | 2101 | VBO  | O2-C6 | -2.71 | 1.19        | 1.24     |
| 3   | B     | 401  | VBO  | O2-C6 | -2.56 | 1.19        | 1.24     |
| 3   | B     | 401  | VBO  | C4-N  | -2.42 | 1.33        | 1.37     |
| 3   | A     | 2102 | VBO  | O2-C6 | -2.22 | 1.20        | 1.24     |
| 3   | A     | 2102 | VBO  | O-C   | -2.17 | 1.40        | 1.45     |
| 3   | A     | 2101 | VBO  | C3-C2 | 2.03  | 1.56        | 1.52     |

All (17) bond angle outliers are listed below:

| Mol | Chain | Res  | Type | Atoms    | Z     | Observed(°) | Ideal(°) |
|-----|-------|------|------|----------|-------|-------------|----------|
| 3   | B     | 401  | VBO  | C6-N1-C7 | -3.88 | 121.46      | 126.58   |
| 3   | A     | 2101 | VBO  | C6-N1-C7 | -3.43 | 122.05      | 126.58   |
| 3   | A     | 2102 | VBO  | C3-C2-C1 | -3.30 | 105.80      | 113.13   |
| 3   | A     | 2102 | VBO  | N1-C7-N  | 3.02  | 117.62      | 114.86   |
| 3   | B     | 401  | VBO  | N1-C7-N  | 2.95  | 117.56      | 114.86   |
| 3   | B     | 401  | VBO  | C4-C5-C6 | 2.94  | 123.53      | 119.52   |

*Continued on next page...*

*Continued from previous page...*

| Mol | Chain | Res  | Type | Atoms    | Z     | Observed(°) | Ideal(°) |
|-----|-------|------|------|----------|-------|-------------|----------|
| 3   | A     | 2101 | VBO  | O-C1-O1  | -2.79 | 114.39      | 123.14   |
| 3   | B     | 401  | VBO  | C5-C4-N  | -2.60 | 120.01      | 122.44   |
| 3   | B     | 401  | VBO  | C-O-C1   | 2.59  | 124.66      | 116.11   |
| 3   | A     | 2102 | VBO  | C6-N1-C7 | -2.57 | 123.19      | 126.58   |
| 3   | A     | 2102 | VBO  | O-C1-C2  | 2.44  | 121.89      | 112.23   |
| 3   | A     | 2101 | VBO  | O-C1-C2  | 2.42  | 121.79      | 112.23   |
| 3   | A     | 2102 | VBO  | C5-C4-N  | -2.29 | 120.30      | 122.44   |
| 3   | B     | 401  | VBO  | O-C1-O1  | -2.28 | 116.00      | 123.14   |
| 3   | A     | 2102 | VBO  | O-C1-O1  | -2.22 | 116.17      | 123.14   |
| 3   | A     | 2101 | VBO  | C-O-C1   | 2.10  | 123.03      | 116.11   |
| 3   | B     | 401  | VBO  | O3-C7-N  | -2.06 | 121.05      | 122.85   |

There are no chirality outliers.

All (5) torsion outliers are listed below:

| Mol | Chain | Res  | Type | Atoms       |
|-----|-------|------|------|-------------|
| 3   | A     | 2101 | VBO  | C2-C3-N-C7  |
| 3   | A     | 2101 | VBO  | C1-C2-C3-N  |
| 3   | A     | 2101 | VBO  | C2-C3-N-C4  |
| 3   | A     | 2102 | VBO  | O1-C1-C2-C3 |
| 3   | A     | 2102 | VBO  | O-C1-C2-C3  |

There are no ring outliers.

No monomer is involved in short contacts.

## 5.7 Other polymers [i](#)

There are no such residues in this entry.

## 5.8 Polymer linkage issues [i](#)

There are no chain breaks in this entry.

## 6 Fit of model and data [i](#)

### 6.1 Protein, DNA and RNA chains [i](#)

Unable to reproduce the depositors R factor - this section is therefore empty.

### 6.2 Non-standard residues in protein, DNA, RNA chains [i](#)

Unable to reproduce the depositors R factor - this section is therefore empty.

### 6.3 Carbohydrates [i](#)

Unable to reproduce the depositors R factor - this section is therefore empty.

### 6.4 Ligands [i](#)

Unable to reproduce the depositors R factor - this section is therefore empty.

### 6.5 Other polymers [i](#)

Unable to reproduce the depositors R factor - this section is therefore empty.