



Full wwPDB X-ray Structure Validation Report ⓘ

Oct 26, 2023 – 01:46 PM EDT

PDB ID : 3F8D
Title : Structure of Sulfolobus solfataricus Thioredoxin reductase Mutant C147A
Authors : Ruggiero, A.; Masullo, M.; Ruocco, M.R.; Arcari, P.; Zagari, A.; Vitagliano, L.
Deposited on : 2008-11-12
Resolution : 1.40 Å(reported)

This is a Full wwPDB X-ray Structure Validation Report for a publicly released PDB entry.

We welcome your comments at validation@mail.wwpdb.org

A user guide is available at

<https://www.wwpdb.org/validation/2017/XrayValidationReportHelp>

with specific help available everywhere you see the ⓘ symbol.

The types of validation reports are described at

<http://www.wwpdb.org/validation/2017/FAQs#types>.

The following versions of software and data (see [references ⓘ](#)) were used in the production of this report:

MolProbity : 4.02b-467
Mogul : 1.8.5 (274361), CSD as541be (2020)
Xtrriage (Phenix) : 1.13
EDS : 2.36
buster-report : 1.1.7 (2018)
Percentile statistics : 20191225.v01 (using entries in the PDB archive December 25th 2019)
Refmac : 5.8.0158
CCP4 : 7.0.044 (Gargrove)
Ideal geometry (proteins) : Engh & Huber (2001)
Ideal geometry (DNA, RNA) : Parkinson et al. (1996)
Validation Pipeline (wwPDB-VP) : 2.36

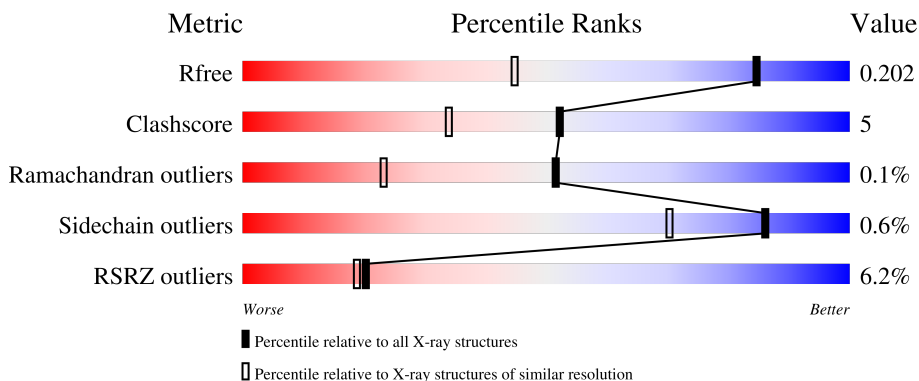
1 Overall quality at a glance i

The following experimental techniques were used to determine the structure:

X-RAY DIFFRACTION

The reported resolution of this entry is 1.40 Å.

Percentile scores (ranging between 0-100) for global validation metrics of the entry are shown in the following graphic. The table shows the number of entries on which the scores are based.



Metric	Whole archive (#Entries)	Similar resolution (#Entries, resolution range(Å))
R_{free}	130704	1714 (1.40-1.40)
Clashscore	141614	1812 (1.40-1.40)
Ramachandran outliers	138981	1763 (1.40-1.40)
Sidechain outliers	138945	1762 (1.40-1.40)
RSRZ outliers	127900	1674 (1.40-1.40)

The table below summarises the geometric issues observed across the polymeric chains and their fit to the electron density. The red, orange, yellow and green segments of the lower bar indicate the fraction of residues that contain outliers for ≥ 3 , 2, 1 and 0 types of geometric quality criteria respectively. A grey segment represents the fraction of residues that are not modelled. The numeric value for each fraction is indicated below the corresponding segment, with a dot representing fractions $\leq 5\%$. The upper red bar (where present) indicates the fraction of residues that have poor fit to the electron density. The numeric value is given above the bar.

Mol	Chain	Length	Quality of chain
1	A	323	<div style="display: flex; align-items: center;"> <div style="width: 2%; height: 10px; background-color: red; margin-right: 5px;"></div> <div style="width: 87%; height: 10px; background-color: green; margin-right: 5px;"></div> <div style="width: 8%; height: 10px; background-color: yellow; margin-right: 5px;"></div> <div style="width: 5%; height: 10px; background-color: grey;"></div> </div> <p style="text-align: center;">2% 87% 8% 5%</p>
1	B	323	<div style="display: flex; align-items: center;"> <div style="width: 5%; height: 10px; background-color: red; margin-right: 5px;"></div> <div style="width: 86%; height: 10px; background-color: green; margin-right: 5px;"></div> <div style="width: 9%; height: 10px; background-color: yellow; margin-right: 5px;"></div> <div style="width: 5%; height: 10px; background-color: grey;"></div> </div> <p style="text-align: center;">5% 86% 9% . .</p>
1	C	323	<div style="display: flex; align-items: center;"> <div style="width: 7%; height: 10px; background-color: red; margin-right: 5px;"></div> <div style="width: 82%; height: 10px; background-color: green; margin-right: 5px;"></div> <div style="width: 13%; height: 10px; background-color: yellow; margin-right: 5px;"></div> <div style="width: 5%; height: 10px; background-color: grey;"></div> </div> <p style="text-align: center;">7% 82% 13% 5%</p>
1	D	323	<div style="display: flex; align-items: center;"> <div style="width: 9%; height: 10px; background-color: red; margin-right: 5px;"></div> <div style="width: 81%; height: 10px; background-color: green; margin-right: 5px;"></div> <div style="width: 11%; height: 10px; background-color: yellow; margin-right: 5px;"></div> <div style="width: 8%; height: 10px; background-color: grey;"></div> </div> <p style="text-align: center;">9% 81% 11% 8%</p>

2 Entry composition

There are 5 unique types of molecules in this entry. The entry contains 10030 atoms, of which 0 are hydrogens and 0 are deuteriums.

In the tables below, the ZeroOcc column contains the number of atoms modelled with zero occupancy, the AltConf column contains the number of residues with at least one atom in alternate conformation and the Trace column contains the number of residues modelled with at most 2 atoms.

- Molecule 1 is a protein called Thioredoxin reductase (TrxB-3).

Mol	Chain	Residues	Atoms					ZeroOcc	AltConf	Trace
			Total	C	N	O	S			
1	A	308	Total 2369	C 1524	N 395	O 445	S 5	0	0	0
1	B	309	Total 2377	C 1528	N 396	O 448	S 5	0	0	0
1	C	307	Total 2358	C 1518	N 391	O 444	S 5	0	0	0
1	D	298	Total 2287	C 1470	N 381	O 431	S 5	0	0	0

There are 4 discrepancies between the modelled and reference sequences:

Chain	Residue	Modelled	Actual	Comment	Reference
A	147	ALA	CYS	engineered mutation	UNP Q97W27
B	147	ALA	CYS	engineered mutation	UNP Q97W27
C	147	ALA	CYS	engineered mutation	UNP Q97W27
D	147	ALA	CYS	engineered mutation	UNP Q97W27

- Molecule 2 is FLAVIN-ADENINE DINUCLEOTIDE (three-letter code: FAD) (formula: $C_{27}H_{33}N_9O_{15}P_2$).



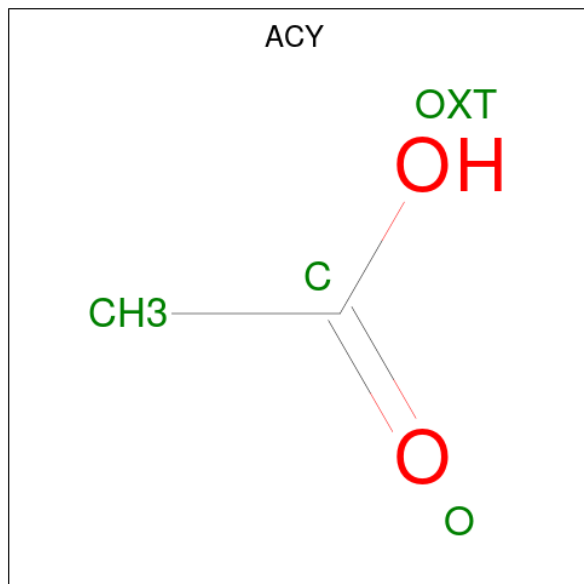
Mol	Chain	Residues	Atoms				ZeroOcc	AltConf	
			Total	C	N	O			P
2	A	1	53	27	9	15	2	0	0
2	B	1	53	27	9	15	2	0	0
2	C	1	53	27	9	15	2	0	0
2	D	1	53	27	9	15	2	0	0

- Molecule 3 is SULFATE ION (three-letter code: SO4) (formula: O₄S).



Mol	Chain	Residues	Atoms	ZeroOcc	AltConf
3	A	1	Total O S 5 4 1	0	0
3	A	1	Total O S 5 4 1	0	0
3	B	1	Total O S 5 4 1	0	0
3	B	1	Total O S 5 4 1	0	0
3	C	1	Total O S 5 4 1	0	0
3	D	1	Total O S 5 4 1	0	0

- Molecule 4 is ACETIC ACID (three-letter code: ACY) (formula: C₂H₄O₂).



Mol	Chain	Residues	Atoms	ZeroOcc	AltConf
4	B	1	Total C O 4 2 2	0	0

- Molecule 5 is water.

Mol	Chain	Residues	Atoms	ZeroOcc	AltConf
5	A	110	Total O 110 110	0	0
5	B	106	Total O 106 106	0	0
5	C	96	Total O 96 96	0	0

Continued on next page...

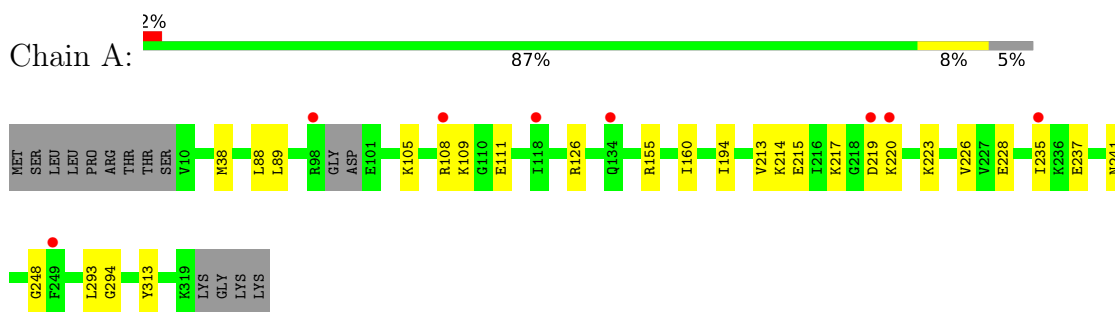
Continued from previous page...

Mol	Chain	Residues	Atoms		ZeroOcc	AltConf
5	D	81	Total	O	0	0
			81	81		

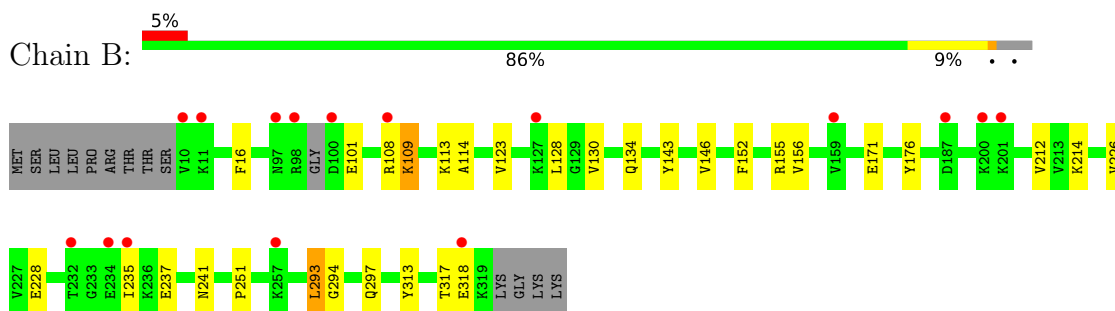
3 Residue-property plots [i](#)

These plots are drawn for all protein, RNA, DNA and oligosaccharide chains in the entry. The first graphic for a chain summarises the proportions of the various outlier classes displayed in the second graphic. The second graphic shows the sequence view annotated by issues in geometry and electron density. Residues are color-coded according to the number of geometric quality criteria for which they contain at least one outlier: green = 0, yellow = 1, orange = 2 and red = 3 or more. A red dot above a residue indicates a poor fit to the electron density ($RSRZ > 2$). Stretches of 2 or more consecutive residues without any outlier are shown as a green connector. Residues present in the sample, but not in the model, are shown in grey.

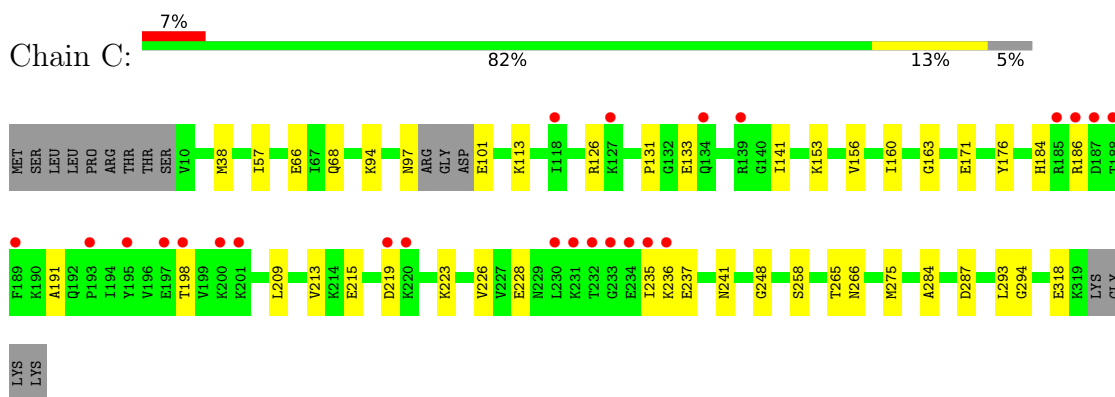
- Molecule 1: Thioredoxin reductase (TrxB-3)



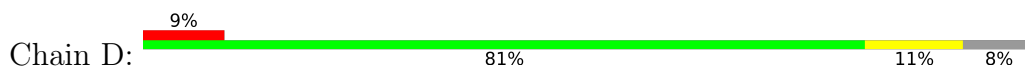
- Molecule 1: Thioredoxin reductase (TrxB-3)

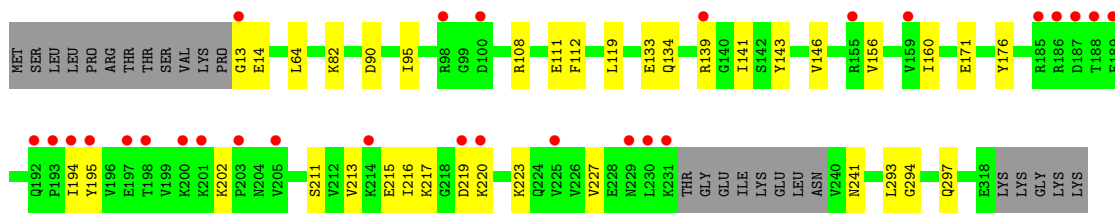


- Molecule 1: Thioredoxin reductase (TrxB-3)



- Molecule 1: Thioredoxin reductase (TrxB-3)





4 Data and refinement statistics i

Property	Value	Source
Space group	P 21 21 21	Depositor
Cell constants a, b, c, α , β , γ	76.58Å 121.87Å 126.84Å 90.00° 90.00° 90.00°	Depositor
Resolution (Å)	15.00 – 1.40 20.31 – 1.39	Depositor EDS
% Data completeness (in resolution range)	(Not available) (15.00-1.40) 95.8 (20.31-1.39)	Depositor EDS
R_{merge}	0.08	Depositor
R_{sym}	(Not available)	Depositor
$\langle I/\sigma(I) \rangle$ ¹	5.73 (at 1.39Å)	Xtrriage
Refinement program	CNS	Depositor
R, R_{free}	0.206 , 0.226 0.196 , 0.202	Depositor DCC
R_{free} test set	814 reflections (0.35%)	wwPDB-VP
Wilson B-factor (Å ²)	13.6	Xtrriage
Anisotropy	0.112	Xtrriage
Bulk solvent k_{sol} (e/Å ³), B_{sol} (Å ²)	0.49 , 52.3	EDS
L-test for twinning ²	$\langle L \rangle = 0.49$, $\langle L^2 \rangle = 0.32$	Xtrriage
Estimated twinning fraction	0.008 for -h,l,k	Xtrriage
F_o, F_c correlation	0.95	EDS
Total number of atoms	10030	wwPDB-VP
Average B, all atoms (Å ²)	18.0	wwPDB-VP

Xtrriage's analysis on translational NCS is as follows: *The largest off-origin peak in the Patterson function is 3.35% of the height of the origin peak. No significant pseudotranslation is detected.*

¹Intensities estimated from amplitudes.

²Theoretical values of $\langle |L| \rangle$, $\langle L^2 \rangle$ for acentric reflections are 0.5, 0.333 respectively for untwinned datasets, and 0.375, 0.2 for perfectly twinned datasets.

5 Model quality [i](#)

5.1 Standard geometry [i](#)

Bond lengths and bond angles in the following residue types are not validated in this section: FAD, ACY, SO4

The Z score for a bond length (or angle) is the number of standard deviations the observed value is removed from the expected value. A bond length (or angle) with $|Z| > 5$ is considered an outlier worth inspection. RMSZ is the root-mean-square of all Z scores of the bond lengths (or angles).

Mol	Chain	Bond lengths		Bond angles	
		RMSZ	# Z >5	RMSZ	# Z >5
1	A	0.64	0/2409	0.82	0/3255
1	B	0.63	0/2417	0.81	0/3266
1	C	0.63	0/2398	0.79	1/3241 (0.0%)
1	D	0.58	0/2326	0.78	0/3144
All	All	0.62	0/9550	0.80	1/12906 (0.0%)

There are no bond length outliers.

All (1) bond angle outliers are listed below:

Mol	Chain	Res	Type	Atoms	Z	Observed(°)	Ideal(°)
1	C	287	ASP	CB-CG-OD2	-5.24	113.58	118.30

There are no chirality outliers.

There are no planarity outliers.

5.2 Too-close contacts [i](#)

In the following table, the Non-H and H(model) columns list the number of non-hydrogen atoms and hydrogen atoms in the chain respectively. The H(added) column lists the number of hydrogen atoms added and optimized by MolProbity. The Clashes column lists the number of clashes within the asymmetric unit, whereas Symm-Clashes lists symmetry-related clashes.

Mol	Chain	Non-H	H(model)	H(added)	Clashes	Symm-Clashes
1	A	2369	0	2432	25	0
1	B	2377	0	2436	25	0
1	C	2358	0	2419	30	0
1	D	2287	0	2334	36	0
2	A	53	0	31	0	0
2	B	53	0	31	1	0

Continued on next page...

Continued from previous page...

Mol	Chain	Non-H	H(model)	H(added)	Clashes	Symm-Clashes
2	C	53	0	31	0	0
2	D	53	0	31	1	0
3	A	10	0	0	0	0
3	B	10	0	0	0	0
3	C	5	0	0	0	0
3	D	5	0	0	0	0
4	B	4	0	3	0	0
5	A	110	0	0	0	0
5	B	106	0	0	1	0
5	C	96	0	0	0	0
5	D	81	0	0	1	0
All	All	10030	0	9748	106	0

The all-atom clashscore is defined as the number of clashes found per 1000 atoms (including hydrogen atoms). The all-atom clashscore for this structure is 5.

All (106) close contacts within the same asymmetric unit are listed below, sorted by their clash magnitude.

Atom-1	Atom-2	Interatomic distance (Å)	Clash overlap (Å)
1:A:105:LYS:HE2	1:A:111:GLU:OE2	1.64	0.98
1:A:105:LYS:HG2	1:A:111:GLU:HG2	1.54	0.88
1:B:156:VAL:H	1:B:241:ASN:HD22	1.24	0.85
1:A:88:LEU:HD11	1:A:109:LYS:HD3	1.63	0.81
1:D:156:VAL:H	1:D:241:ASN:HD22	1.29	0.78
1:A:88:LEU:HD11	1:A:109:LYS:CD	2.14	0.77
1:A:219:ASP:OD1	1:A:223:LYS:HE3	1.88	0.74
1:B:134:GLN:HG2	5:B:5562:HOH:O	1.87	0.73
1:D:146:VAL:HG21	1:D:297:GLN:HE22	1.52	0.73
1:A:293:LEU:HD23	1:A:294:GLY:N	2.06	0.70
1:C:293:LEU:HD13	1:C:294:GLY:N	2.05	0.70
1:C:38:MET:HG2	1:D:176:TYR:CZ	2.28	0.69
1:B:146:VAL:HG21	1:B:297:GLN:HE22	1.57	0.68
1:D:293:LEU:HD13	1:D:294:GLY:N	2.08	0.68
1:C:318:GLU:HG2	1:D:194:ILE:HG12	1.77	0.66
1:C:126:ARG:NH1	1:C:248:GLY:HA3	2.12	0.65
1:D:194:ILE:HG23	1:D:195:TYR:HD1	1.62	0.65
1:B:214:LYS:CE	1:B:228:GLU:OE1	2.46	0.64
1:C:318:GLU:HG2	1:D:194:ILE:CG1	2.28	0.64
1:A:219:ASP:CG	1:A:220:LYS:H	2.01	0.64
1:A:108:ARG:CZ	1:A:109:LYS:HE3	2.28	0.63
1:A:214:LYS:HE3	1:A:228:GLU:OE1	1.98	0.63

Continued on next page...

Continued from previous page...

Atom-1	Atom-2	Interatomic distance (Å)	Clash overlap (Å)
1:C:293:LEU:HD13	1:C:293:LEU:C	2.19	0.62
1:A:38:MET:HG2	1:B:176:TYR:CZ	2.37	0.59
1:C:171:GLU:OE1	1:C:198:THR:HG22	2.02	0.59
1:D:90:ASP:OD1	1:D:108:ARG:HD2	2.03	0.58
1:C:94:LYS:NZ	1:C:258:SER:O	2.35	0.58
1:B:128:LEU:HG	1:B:130:VAL:HG13	1.85	0.58
1:D:219:ASP:CG	1:D:220:LYS:H	2.07	0.57
1:B:156:VAL:H	1:B:241:ASN:ND2	2.00	0.57
1:D:219:ASP:CG	1:D:223:LYS:HE3	2.26	0.56
1:A:215:GLU:HG2	1:A:217:LYS:HG2	1.89	0.55
1:D:156:VAL:H	1:D:241:ASN:ND2	2.01	0.55
1:D:139:ARG:HH21	1:D:220:LYS:HB3	1.72	0.54
1:A:226:VAL:HG22	1:A:237:GLU:HG2	1.89	0.54
1:D:293:LEU:HD13	1:D:293:LEU:C	2.27	0.54
1:D:13:GLY:HA3	1:D:111:GLU:O	2.07	0.54
1:A:194:ILE:HG12	1:B:318:GLU:HG2	1.89	0.54
1:C:101:GLU:OE2	1:C:113:LYS:HD3	2.09	0.53
1:C:160:ILE:HD11	1:C:213:VAL:HG21	1.90	0.53
1:D:139:ARG:NH2	1:D:220:LYS:HB3	2.24	0.53
1:A:88:LEU:HD11	1:A:109:LYS:HD2	1.90	0.52
1:B:109:LYS:N	1:B:109:LYS:HD2	2.25	0.52
1:C:265:THR:O	1:C:265:THR:HG22	2.10	0.52
1:B:226:VAL:HG22	1:B:237:GLU:HG2	1.92	0.52
1:B:214:LYS:HE2	1:B:228:GLU:HB3	1.92	0.51
1:C:160:ILE:CD1	1:C:213:VAL:HG21	2.41	0.51
1:A:214:LYS:HD2	1:A:235:ILE:HD12	1.93	0.51
1:C:226:VAL:HG22	1:C:237:GLU:HG2	1.92	0.51
1:B:152:PHE:HA	1:B:155:ARG:HD3	1.92	0.50
1:D:211:SER:HB3	1:D:227:VAL:CG1	2.42	0.50
1:D:219:ASP:OD1	1:D:223:LYS:HE3	2.11	0.49
1:A:89:LEU:O	1:A:108:ARG:NH2	2.45	0.49
1:A:293:LEU:HD23	1:A:293:LEU:C	2.34	0.48
1:D:194:ILE:HG23	1:D:195:TYR:CD1	2.45	0.48
1:D:13:GLY:O	1:D:112:PHE:CD2	2.67	0.47
1:A:108:ARG:NE	1:A:109:LYS:HE3	2.28	0.47
1:A:194:ILE:CG1	1:B:318:GLU:HG2	2.45	0.47
1:C:219:ASP:N	1:C:219:ASP:OD1	2.46	0.47
1:B:214:LYS:HE2	1:B:228:GLU:CB	2.46	0.46
1:D:133:GLU:HA	1:D:141:ILE:CD1	2.46	0.46
1:C:265:THR:O	1:C:265:THR:CG2	2.63	0.46
1:D:95:ILE:HD11	1:D:119:LEU:HD21	1.96	0.46

Continued on next page...

Continued from previous page...

Atom-1	Atom-2	Interatomic distance (Å)	Clash overlap (Å)
1:C:126:ARG:HH11	1:C:248:GLY:HA3	1.81	0.46
1:B:313:TYR:O	1:B:317:THR:HG23	2.16	0.46
1:D:160:ILE:HD11	1:D:213:VAL:HG21	1.98	0.45
1:B:101:GLU:OE2	1:B:113:LYS:HE2	2.17	0.45
1:C:38:MET:HG2	1:D:176:TYR:CE2	2.51	0.45
1:C:293:LEU:C	1:C:293:LEU:CD1	2.85	0.45
1:C:57:ILE:HD11	1:C:68:GLN:NE2	2.32	0.45
1:C:163:GLY:C	1:C:191:ALA:HB2	2.37	0.45
1:B:16:PHE:O	1:B:114:ALA:HA	2.17	0.44
1:C:153:LYS:HG2	1:C:176:TYR:HD1	1.81	0.44
1:B:108:ARG:C	1:B:109:LYS:HD2	2.38	0.44
1:C:228:GLU:HB2	1:C:235:ILE:HD12	2.00	0.44
1:D:220:LYS:HE3	1:D:220:LYS:HB2	1.73	0.44
1:C:219:ASP:CG	1:C:223:LYS:HZ2	2.22	0.43
1:B:143:TYR:HB2	2:B:2002:FAD:HM73	2.00	0.43
1:A:108:ARG:NH2	1:A:109:LYS:HE3	2.34	0.43
1:D:219:ASP:CG	1:D:220:LYS:N	2.71	0.43
1:C:318:GLU:CG	1:D:194:ILE:HG12	2.48	0.43
1:A:155:ARG:HB3	1:A:241:ASN:HD22	1.83	0.43
1:B:214:LYS:HE3	1:B:228:GLU:OE1	2.18	0.43
1:D:134:GLN:NE2	5:D:5617:HOH:O	2.50	0.42
1:B:123:VAL:HG12	1:B:251:PRO:HA	2.00	0.42
1:D:13:GLY:O	1:D:112:PHE:HA	2.20	0.42
1:D:215:GLU:OE2	1:D:217:LYS:HG2	2.19	0.42
1:D:141:ILE:HD11	1:D:216:ILE:HG21	2.00	0.42
1:D:143:TYR:HB2	2:D:2004:FAD:HM73	2.01	0.42
1:B:212:VAL:HG21	1:B:214:LYS:NZ	2.34	0.42
1:A:313:TYR:OH	1:B:171:GLU:HG3	2.19	0.42
1:C:131:PRO:HB2	1:C:215:GLU:HG3	2.02	0.42
1:C:66:GLU:OE2	1:D:82:LYS:HD2	2.19	0.42
1:C:184:HIS:HB3	1:C:209:LEU:HD23	2.01	0.42
1:D:171:GLU:OE2	1:D:202:LYS:HE3	2.20	0.42
1:D:13:GLY:O	1:D:112:PHE:HD2	2.03	0.41
1:A:219:ASP:CG	1:A:220:LYS:N	2.70	0.41
1:B:228:GLU:HB2	1:B:235:ILE:CD1	2.51	0.41
1:A:126:ARG:NH1	1:A:248:GLY:HA3	2.35	0.41
1:A:160:ILE:HD11	1:A:213:VAL:HG21	2.03	0.41
1:C:133:GLU:HA	1:C:141:ILE:CD1	2.51	0.41
1:C:156:VAL:H	1:C:241:ASN:HD22	1.69	0.41
1:D:64:LEU:HD23	1:D:64:LEU:HA	1.91	0.41
1:D:219:ASP:OD1	1:D:220:LYS:N	2.54	0.40

Continued on next page...

Continued from previous page...

Atom-1	Atom-2	Interatomic distance (Å)	Clash overlap (Å)
1:B:293:LEU:HD23	1:B:294:GLY:N	2.36	0.40
1:C:275:MET:HB3	1:C:284:ALA:O	2.21	0.40

There are no symmetry-related clashes.

5.3 Torsion angles [i](#)

5.3.1 Protein backbone [i](#)

In the following table, the Percentiles column shows the percent Ramachandran outliers of the chain as a percentile score with respect to all X-ray entries followed by that with respect to entries of similar resolution.

The Analysed column shows the number of residues for which the backbone conformation was analysed, and the total number of residues.

Mol	Chain	Analysed	Favoured	Allowed	Outliers	Percentiles	
1	A	304/323 (94%)	296 (97%)	8 (3%)	0	100	100
1	B	305/323 (94%)	298 (98%)	7 (2%)	0	100	100
1	C	303/323 (94%)	297 (98%)	6 (2%)	0	100	100
1	D	294/323 (91%)	287 (98%)	6 (2%)	1 (0%)	41	18
All	All	1206/1292 (93%)	1178 (98%)	27 (2%)	1 (0%)	51	23

All (1) Ramachandran outliers are listed below:

Mol	Chain	Res	Type
1	D	14	GLU

5.3.2 Protein sidechains [i](#)

In the following table, the Percentiles column shows the percent sidechain outliers of the chain as a percentile score with respect to all X-ray entries followed by that with respect to entries of similar resolution.

The Analysed column shows the number of residues for which the sidechain conformation was analysed, and the total number of residues.

Mol	Chain	Analysed	Rotameric	Outliers	Percentiles	
1	A	253/266 (95%)	253 (100%)	0	100	100

Continued on next page...

Continued from previous page...

Mol	Chain	Analysed	Rotameric	Outliers	Percentiles	
1	B	254/266 (96%)	252 (99%)	2 (1%)	81	62
1	C	252/266 (95%)	248 (98%)	4 (2%)	62	33
1	D	243/266 (91%)	243 (100%)	0	100	100
All	All	1002/1064 (94%)	996 (99%)	6 (1%)	86	70

All (6) residues with a non-rotameric sidechain are listed below:

Mol	Chain	Res	Type
1	B	109	LYS
1	B	293	LEU
1	C	97	ASN
1	C	186	ARG
1	C	236	LYS
1	C	266	ASN

Sometimes sidechains can be flipped to improve hydrogen bonding and reduce clashes. All (9) such sidechains are listed below:

Mol	Chain	Res	Type
1	A	241	ASN
1	B	241	ASN
1	B	297	GLN
1	C	68	GLN
1	C	241	ASN
1	C	266	ASN
1	D	134	GLN
1	D	241	ASN
1	D	297	GLN

5.3.3 RNA [i](#)

There are no RNA molecules in this entry.

5.4 Non-standard residues in protein, DNA, RNA chains [i](#)

There are no non-standard protein/DNA/RNA residues in this entry.

5.5 Carbohydrates [i](#)

There are no monosaccharides in this entry.

5.6 Ligand geometry [i](#)

11 ligands are modelled in this entry.

In the following table, the Counts columns list the number of bonds (or angles) for which Mogul statistics could be retrieved, the number of bonds (or angles) that are observed in the model and the number of bonds (or angles) that are defined in the Chemical Component Dictionary. The Link column lists molecule types, if any, to which the group is linked. The Z score for a bond length (or angle) is the number of standard deviations the observed value is removed from the expected value. A bond length (or angle) with $|Z| > 2$ is considered an outlier worth inspection. RMSZ is the root-mean-square of all Z scores of the bond lengths (or angles).

Mol	Type	Chain	Res	Link	Bond lengths			Bond angles		
					Counts	RMSZ	# $ Z > 2$	Counts	RMSZ	# $ Z > 2$
2	FAD	C	2003	-	53,58,58	1.49	9 (16%)	68,89,89	1.11	4 (5%)
3	SO4	A	4157	-	4,4,4	1.86	2 (50%)	6,6,6	0.93	0
3	SO4	B	4161	-	4,4,4	1.84	2 (50%)	6,6,6	0.96	0
3	SO4	B	4158	-	4,4,4	1.79	1 (25%)	6,6,6	0.90	0
2	FAD	A	2001	-	53,58,58	1.36	8 (15%)	68,89,89	1.06	4 (5%)
3	SO4	D	4162	-	4,4,4	1.85	2 (50%)	6,6,6	0.85	0
4	ACY	B	1501	-	3,3,3	1.59	1 (33%)	3,3,3	1.26	0
2	FAD	D	2004	-	53,58,58	1.52	7 (13%)	68,89,89	1.11	6 (8%)
3	SO4	C	4163	-	4,4,4	1.81	2 (50%)	6,6,6	0.96	0
3	SO4	A	4159	-	4,4,4	1.78	2 (50%)	6,6,6	0.84	0
2	FAD	B	2002	-	53,58,58	1.64	10 (18%)	68,89,89	1.08	6 (8%)

In the following table, the Chirals column lists the number of chiral outliers, the number of chiral centers analysed, the number of these observed in the model and the number defined in the Chemical Component Dictionary. Similar counts are reported in the Torsion and Rings columns. '-' means no outliers of that kind were identified.

Mol	Type	Chain	Res	Link	Chirals	Torsions	Rings
2	FAD	D	2004	-	-	1/30/50/50	0/6/6/6
2	FAD	A	2001	-	-	2/30/50/50	0/6/6/6
2	FAD	C	2003	-	-	2/30/50/50	0/6/6/6
2	FAD	B	2002	-	-	1/30/50/50	0/6/6/6

All (46) bond length outliers are listed below:

Mol	Chain	Res	Type	Atoms	Z	Observed(Å)	Ideal(Å)
2	D	2004	FAD	O2-C2	-5.03	1.15	1.24
2	B	2002	FAD	C4X-N5	5.01	1.40	1.30
2	D	2004	FAD	C4X-N5	4.58	1.39	1.30
2	B	2002	FAD	O2-C2	-4.44	1.16	1.24
2	A	2001	FAD	C4X-N5	3.96	1.38	1.30
2	D	2004	FAD	C2B-C1B	-3.94	1.47	1.53
2	C	2003	FAD	C2B-C1B	-3.89	1.47	1.53
2	B	2002	FAD	C9A-C5X	3.77	1.47	1.41
2	B	2002	FAD	C2B-C1B	-3.60	1.48	1.53
2	C	2003	FAD	C4X-N5	3.46	1.37	1.30
2	B	2002	FAD	C4'-C3'	-3.35	1.47	1.53
2	A	2001	FAD	O4B-C1B	3.29	1.45	1.41
2	C	2003	FAD	O2-C2	-3.23	1.18	1.24
2	C	2003	FAD	C9A-C5X	3.22	1.46	1.41
2	C	2003	FAD	C4'-C3'	-3.19	1.47	1.53
2	D	2004	FAD	C9A-C5X	3.10	1.46	1.41
2	A	2001	FAD	O2-C2	-3.10	1.18	1.24
2	A	2001	FAD	C2A-N3A	3.03	1.37	1.32
3	D	4162	SO4	O1-S	3.01	1.62	1.46
3	A	4157	SO4	O1-S	3.01	1.62	1.46
3	B	4158	SO4	O1-S	2.99	1.62	1.46
3	B	4161	SO4	O1-S	2.99	1.62	1.46
3	C	4163	SO4	O1-S	2.98	1.62	1.46
2	C	2003	FAD	C1'-C2'	2.94	1.56	1.52
3	A	4159	SO4	O1-S	2.91	1.61	1.46
2	B	2002	FAD	C2A-N3A	2.88	1.36	1.32
2	D	2004	FAD	C4'-C3'	-2.86	1.48	1.53
2	C	2003	FAD	O4B-C1B	2.54	1.44	1.41
2	C	2003	FAD	O2'-C2'	2.44	1.48	1.43
2	B	2002	FAD	C2A-N1A	2.39	1.38	1.33
2	A	2001	FAD	C2B-C1B	-2.38	1.50	1.53
2	B	2002	FAD	C4-N3	-2.35	1.34	1.38
4	B	1501	ACY	OXT-C	-2.29	1.19	1.30
2	B	2002	FAD	C5'-C4'	-2.25	1.48	1.51
2	A	2001	FAD	C9A-C5X	2.22	1.44	1.41
2	A	2001	FAD	C4'-C3'	-2.19	1.49	1.53
2	D	2004	FAD	O4B-C1B	2.16	1.44	1.41
3	A	4157	SO4	O3-S	-2.13	1.30	1.47
2	D	2004	FAD	C2A-N1A	2.09	1.37	1.33
3	D	4162	SO4	O3-S	-2.08	1.30	1.47
2	A	2001	FAD	C1'-C2'	2.07	1.55	1.52
3	B	4161	SO4	O3-S	-2.07	1.30	1.47
2	B	2002	FAD	O4B-C1B	2.03	1.43	1.41

Continued on next page...

Continued from previous page...

Mol	Chain	Res	Type	Atoms	Z	Observed(Å)	Ideal(Å)
2	C	2003	FAD	C8-C7	2.03	1.46	1.40
3	C	4163	SO4	O3-S	-2.02	1.31	1.47
3	A	4159	SO4	O3-S	-2.01	1.31	1.47

All (20) bond angle outliers are listed below:

Mol	Chain	Res	Type	Atoms	Z	Observed(°)	Ideal(°)
2	C	2003	FAD	C5A-C6A-N6A	3.28	125.33	120.35
2	D	2004	FAD	N3A-C2A-N1A	-3.10	123.83	128.68
2	B	2002	FAD	C4-C4X-N5	2.88	122.33	118.23
2	B	2002	FAD	N3A-C2A-N1A	-2.75	124.38	128.68
2	D	2004	FAD	C4X-C10-N10	2.63	120.32	116.48
2	B	2002	FAD	C4X-C10-N10	2.60	120.28	116.48
2	C	2003	FAD	O5'-C5'-C4'	-2.52	102.63	109.36
2	A	2001	FAD	C9A-C5X-N5	-2.48	119.74	122.43
2	B	2002	FAD	O4B-C1B-C2B	-2.47	103.32	106.93
2	A	2001	FAD	N3A-C2A-N1A	-2.43	124.87	128.68
2	D	2004	FAD	C4-C4X-N5	2.42	121.67	118.23
2	C	2003	FAD	O4B-C1B-C2B	-2.36	103.48	106.93
2	D	2004	FAD	C10-C4X-N5	-2.21	120.17	124.86
2	A	2001	FAD	C5A-C6A-N6A	2.21	123.71	120.35
2	B	2002	FAD	O5'-C5'-C4'	-2.19	103.52	109.36
2	D	2004	FAD	O4B-C1B-C2B	-2.16	103.77	106.93
2	B	2002	FAD	C10-C4X-N5	-2.14	120.31	124.86
2	D	2004	FAD	C5A-C6A-N6A	2.12	123.58	120.35
2	A	2001	FAD	O4B-C1B-C2B	-2.04	103.94	106.93
2	C	2003	FAD	C9A-C5X-N5	-2.02	120.24	122.43

There are no chirality outliers.

All (6) torsion outliers are listed below:

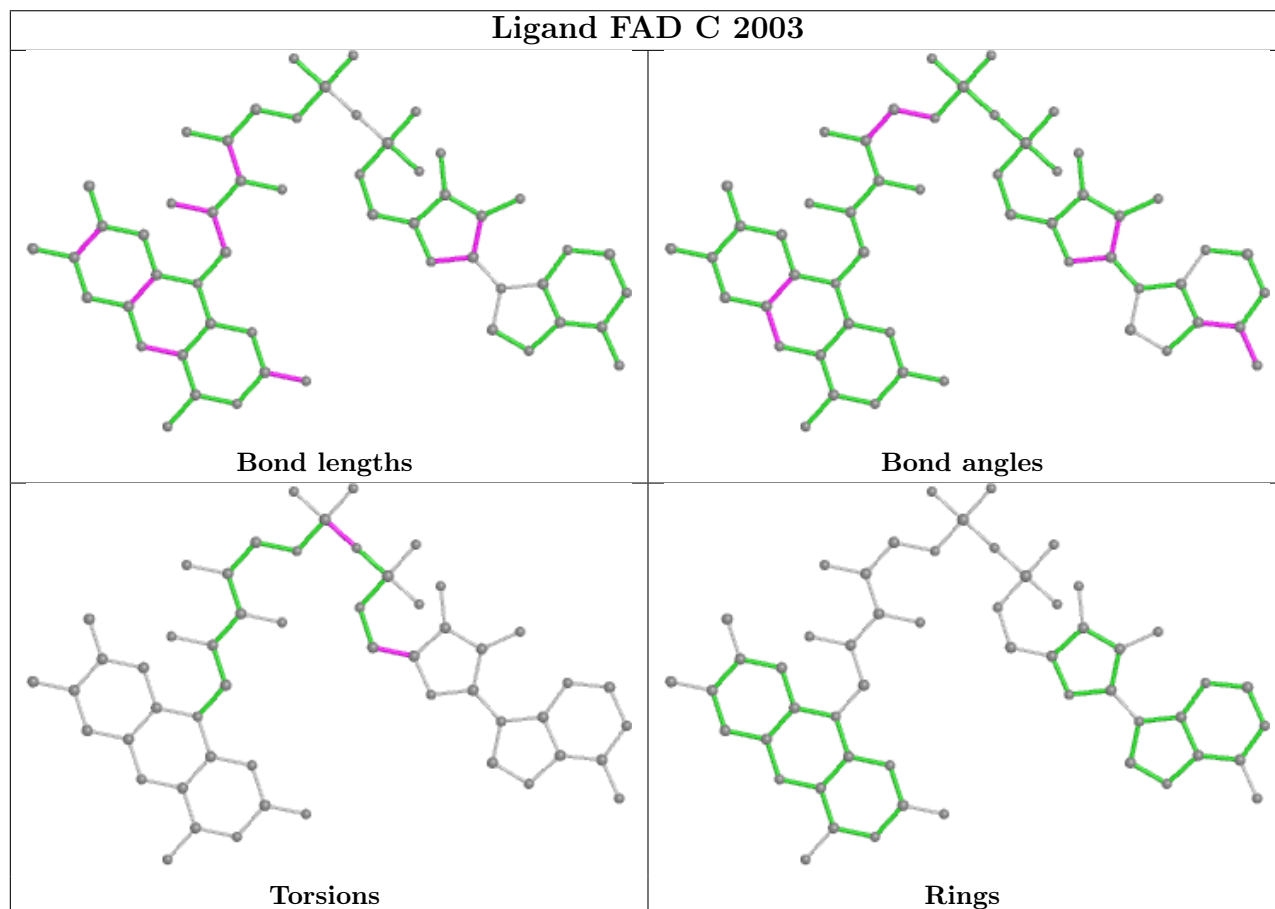
Mol	Chain	Res	Type	Atoms
2	A	2001	FAD	PA-O3P-P-O5'
2	C	2003	FAD	PA-O3P-P-O5'
2	B	2002	FAD	O4B-C4B-C5B-O5B
2	A	2001	FAD	O4B-C4B-C5B-O5B
2	C	2003	FAD	O4B-C4B-C5B-O5B
2	D	2004	FAD	O4B-C4B-C5B-O5B

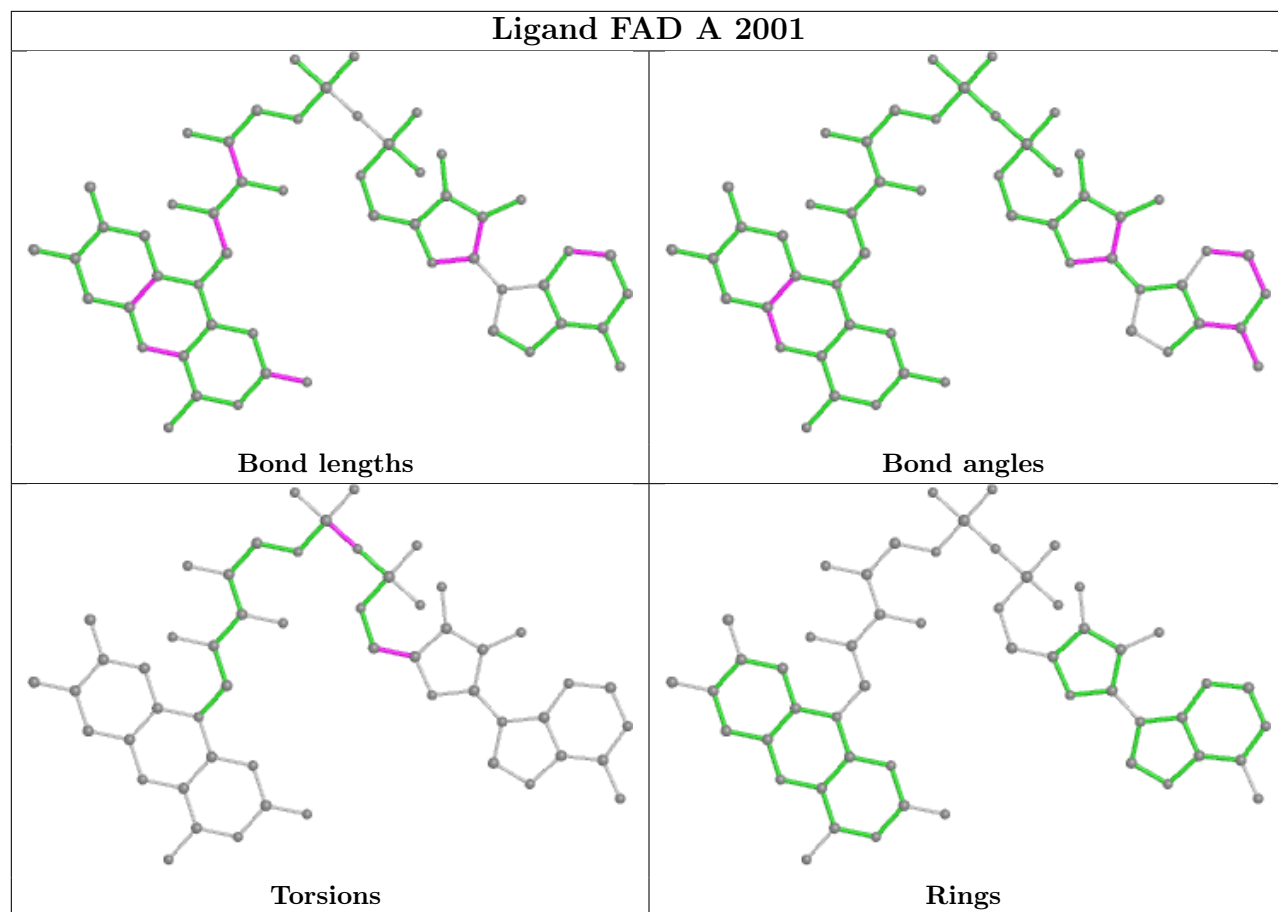
There are no ring outliers.

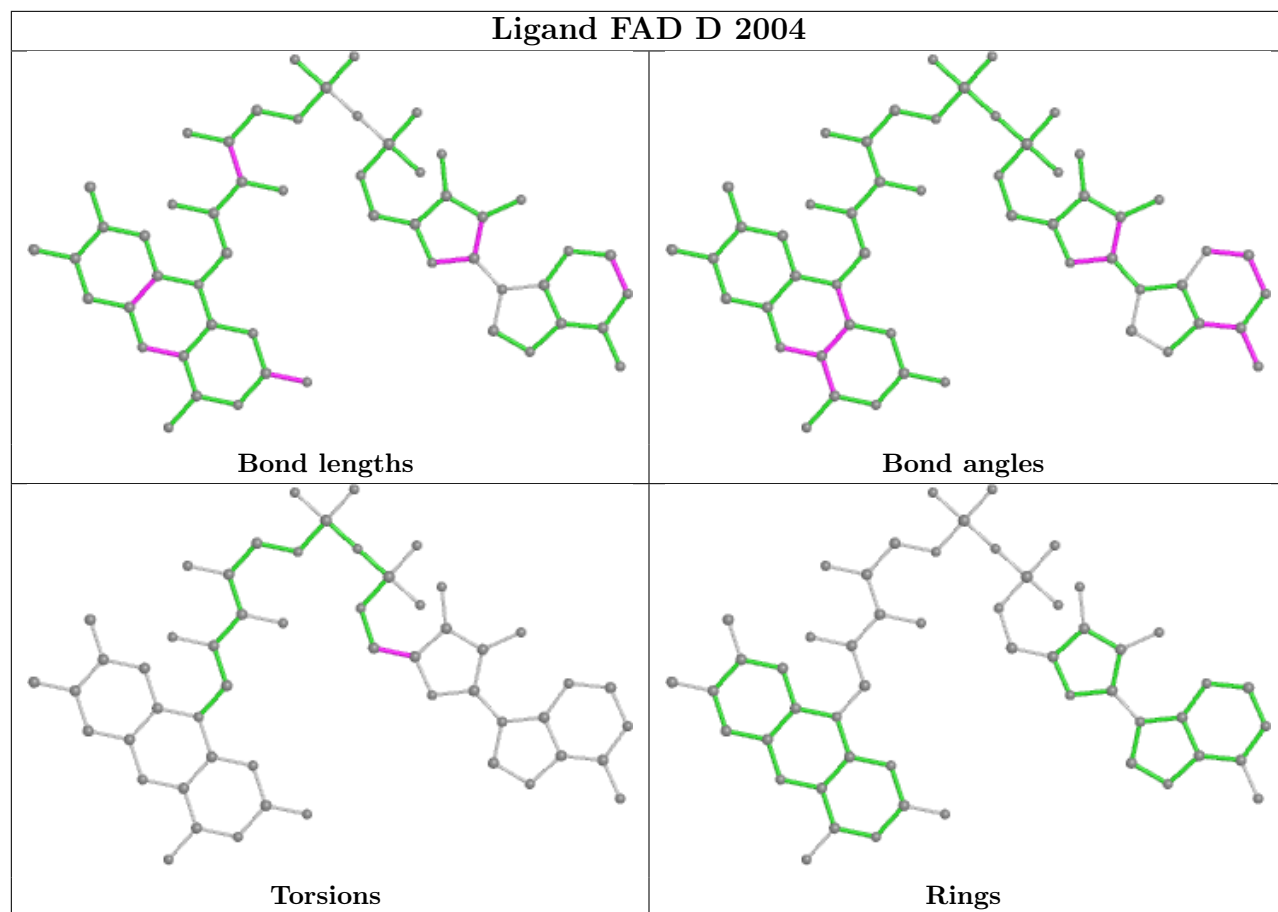
2 monomers are involved in 2 short contacts:

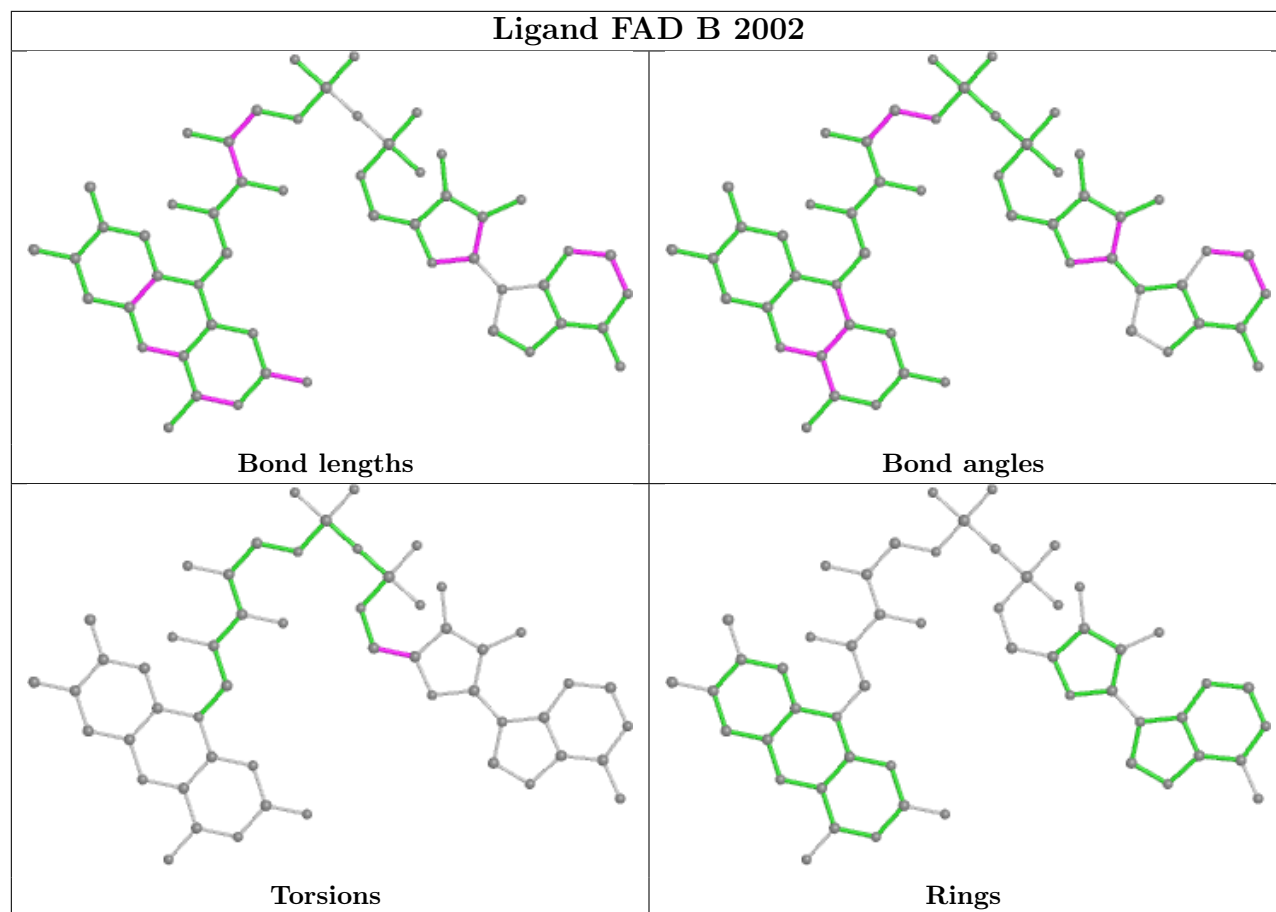
Mol	Chain	Res	Type	Clashes	Symm-Clashes
2	D	2004	FAD	1	0
2	B	2002	FAD	1	0

The following is a two-dimensional graphical depiction of Mogul quality analysis of bond lengths, bond angles, torsion angles, and ring geometry for all instances of the Ligand of Interest. In addition, ligands with molecular weight > 250 and outliers as shown on the validation Tables will also be included. For torsion angles, if less than 5% of the Mogul distribution of torsion angles is within 10 degrees of the torsion angle in question, then that torsion angle is considered an outlier. Any bond that is central to one or more torsion angles identified as an outlier by Mogul will be highlighted in the graph. For rings, the root-mean-square deviation (RMSD) between the ring in question and similar rings identified by Mogul is calculated over all ring torsion angles. If the average RMSD is greater than 60 degrees and the minimal RMSD between the ring in question and any Mogul-identified rings is also greater than 60 degrees, then that ring is considered an outlier. The outliers are highlighted in purple. The color gray indicates Mogul did not find sufficient equivalents in the CSD to analyse the geometry.









5.7 Other polymers [i](#)

There are no such residues in this entry.

5.8 Polymer linkage issues [i](#)

There are no chain breaks in this entry.

6 Fit of model and data

6.1 Protein, DNA and RNA chains

In the following table, the column labelled ‘#RSRZ > 2’ contains the number (and percentage) of RSRZ outliers, followed by percent RSRZ outliers for the chain as percentile scores relative to all X-ray entries and entries of similar resolution. The OWAB column contains the minimum, median, 95th percentile and maximum values of the occupancy-weighted average B-factor per residue. The column labelled ‘Q < 0.9’ lists the number of (and percentage) of residues with an average occupancy less than 0.9.

Mol	Chain	Analysed	<RSRZ>	#RSRZ>2	OWAB(Å ²)	Q<0.9
1	A	308/323 (95%)	0.18	8 (2%) 56 55	7, 15, 29, 38	0
1	B	309/323 (95%)	0.42	16 (5%) 27 26	8, 17, 30, 38	0
1	C	307/323 (95%)	0.43	24 (7%) 13 12	8, 16, 35, 41	0
1	D	298/323 (92%)	0.51	28 (9%) 8 7	8, 18, 38, 44	0
All	All	1222/1292 (94%)	0.39	76 (6%) 20 19	7, 17, 34, 44	0

All (76) RSRZ outliers are listed below:

Mol	Chain	Res	Type	RSRZ
1	D	13	GLY	7.8
1	A	98	ARG	6.7
1	D	98	ARG	5.7
1	B	98	ARG	5.3
1	C	232	THR	5.1
1	C	219	ASP	4.9
1	D	231	LYS	4.8
1	B	11	LYS	4.8
1	D	201	LYS	4.7
1	C	220	LYS	4.6
1	D	230	LEU	4.5
1	C	235	ILE	4.5
1	B	201	LYS	4.4
1	D	186	ARG	4.3
1	D	139	ARG	4.2
1	D	219	ASP	4.0
1	D	220	LYS	3.9
1	B	232	THR	3.9
1	D	200	LYS	3.8
1	D	195	TYR	3.8
1	C	134	GLN	3.7

Continued on next page...

Continued from previous page...

Mol	Chain	Res	Type	RSRZ
1	D	197	GLU	3.7
1	B	200	LYS	3.6
1	C	127	LYS	3.6
1	A	219	ASP	3.6
1	D	203	PRO	3.6
1	B	10	VAL	3.5
1	B	100	ASP	3.5
1	D	194	ILE	3.5
1	A	220	LYS	3.5
1	B	235	ILE	3.4
1	B	108	ARG	3.3
1	C	234	GLU	3.3
1	A	108	ARG	3.2
1	D	100	ASP	3.2
1	B	127	LYS	3.2
1	D	187	ASP	3.2
1	D	188	THR	3.1
1	C	200	LYS	3.0
1	D	198	THR	3.0
1	C	187	ASP	3.0
1	C	231	LYS	2.9
1	D	214	LYS	2.9
1	C	201	LYS	2.8
1	C	233	GLY	2.8
1	D	155	ARG	2.8
1	D	192	GLN	2.7
1	D	193	PRO	2.6
1	B	234	GLU	2.6
1	D	185	ARG	2.6
1	C	193	PRO	2.5
1	C	197	GLU	2.5
1	B	159	VAL	2.5
1	D	229	ASN	2.5
1	C	118	ILE	2.5
1	C	236	LYS	2.4
1	C	198	THR	2.4
1	C	195	TYR	2.4
1	B	97	ASN	2.3
1	C	188	THR	2.3
1	D	159	VAL	2.3
1	D	205	VAL	2.2
1	C	185	ARG	2.2

Continued on next page...

Continued from previous page...

Mol	Chain	Res	Type	RSRZ
1	C	189	PHE	2.2
1	A	249	PHE	2.1
1	C	230	LEU	2.1
1	A	118	ILE	2.1
1	B	187	ASP	2.1
1	B	257	LYS	2.1
1	A	134	GLN	2.1
1	D	225	VAL	2.1
1	C	139	ARG	2.1
1	C	186	ARG	2.1
1	B	318	GLU	2.1
1	D	189	PHE	2.1
1	A	235	ILE	2.0

6.2 Non-standard residues in protein, DNA, RNA chains [i](#)

There are no non-standard protein/DNA/RNA residues in this entry.

6.3 Carbohydrates [i](#)

There are no monosaccharides in this entry.

6.4 Ligands [i](#)

In the following table, the Atoms column lists the number of modelled atoms in the group and the number defined in the chemical component dictionary. The B-factors column lists the minimum, median, 95th percentile and maximum values of B factors of atoms in the group. The column labelled 'Q< 0.9' lists the number of atoms with occupancy less than 0.9.

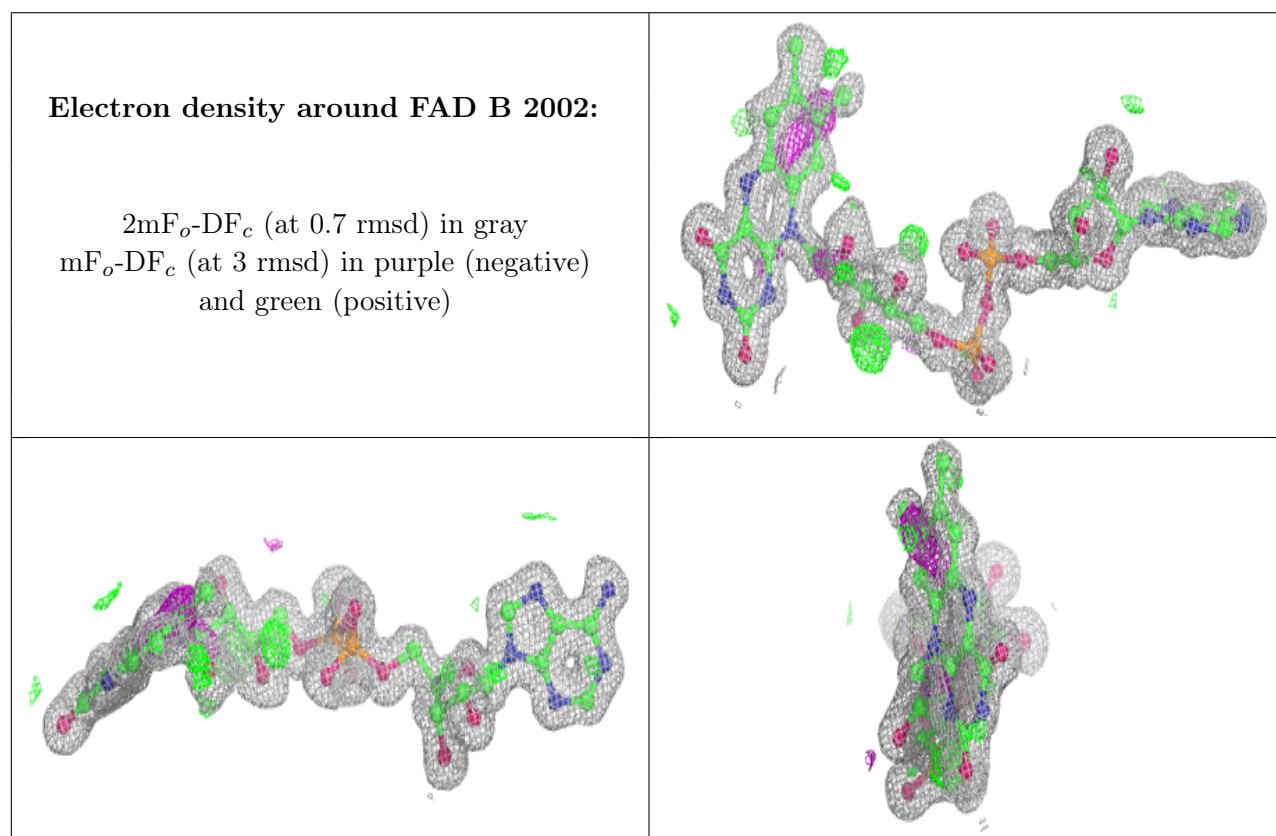
Mol	Type	Chain	Res	Atoms	RSCC	RSR	B-factors(\AA^2)	Q<0.9
3	SO4	A	4159	5/5	0.92	0.13	37,40,42,42	0
3	SO4	B	4158	5/5	0.95	0.11	32,36,39,40	0
3	SO4	C	4163	5/5	0.95	0.12	44,44,45,45	0
3	SO4	A	4157	5/5	0.96	0.07	43,43,44,44	0
2	FAD	B	2002	53/53	0.96	0.09	9,14,20,22	0
2	FAD	C	2003	53/53	0.96	0.10	8,12,22,25	0
2	FAD	D	2004	53/53	0.96	0.09	9,13,20,22	0
4	ACY	B	1501	4/4	0.96	0.06	17,17,17,18	0
3	SO4	D	4162	5/5	0.97	0.12	41,42,43,43	0
3	SO4	B	4161	5/5	0.97	0.13	30,37,39,39	0

Continued on next page...

Continued from previous page...

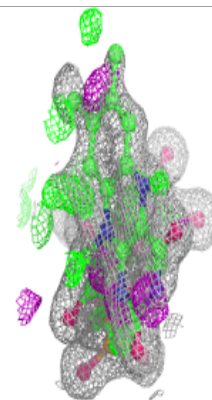
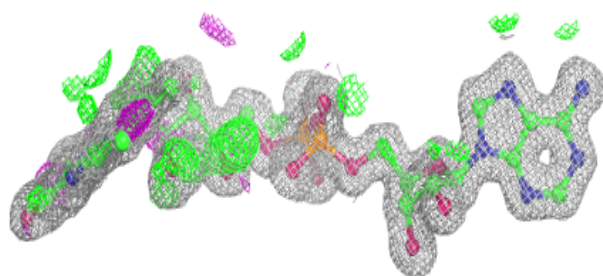
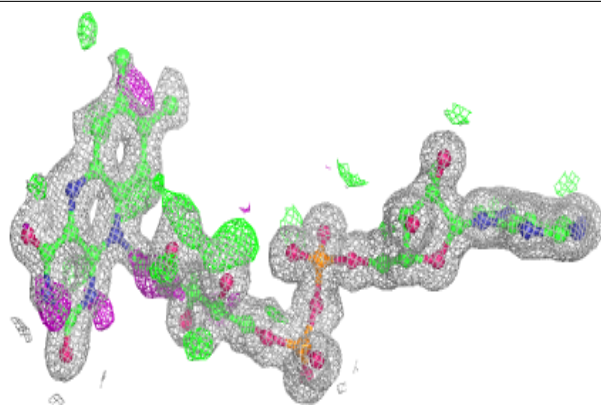
Mol	Type	Chain	Res	Atoms	RSCC	RSR	B-factors(\AA^2)	Q<0.9
2	FAD	A	2001	53/53	0.98	0.08	8,11,18,21	0

The following is a graphical depiction of the model fit to experimental electron density of all instances of the Ligand of Interest. In addition, ligands with molecular weight > 250 and outliers as shown on the geometry validation Tables will also be included. Each fit is shown from different orientation to approximate a three-dimensional view.

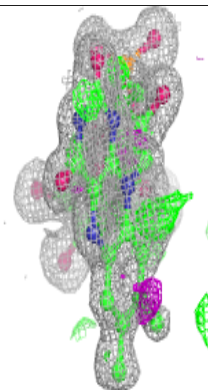
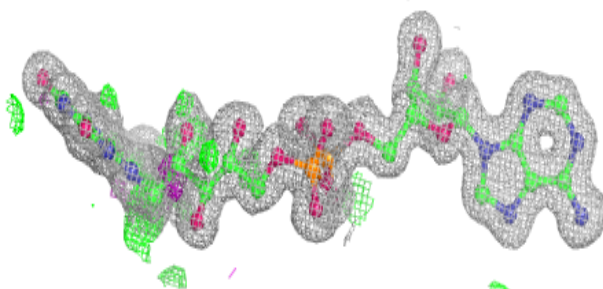
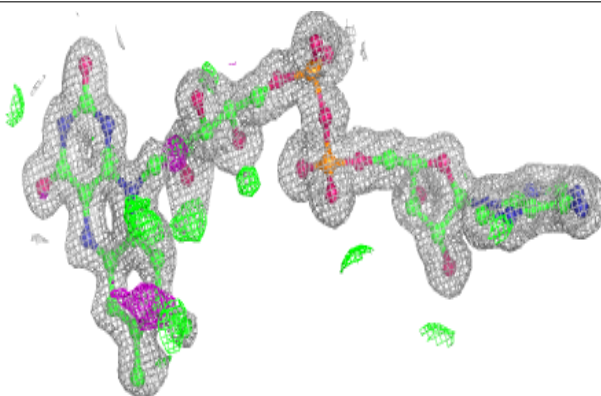


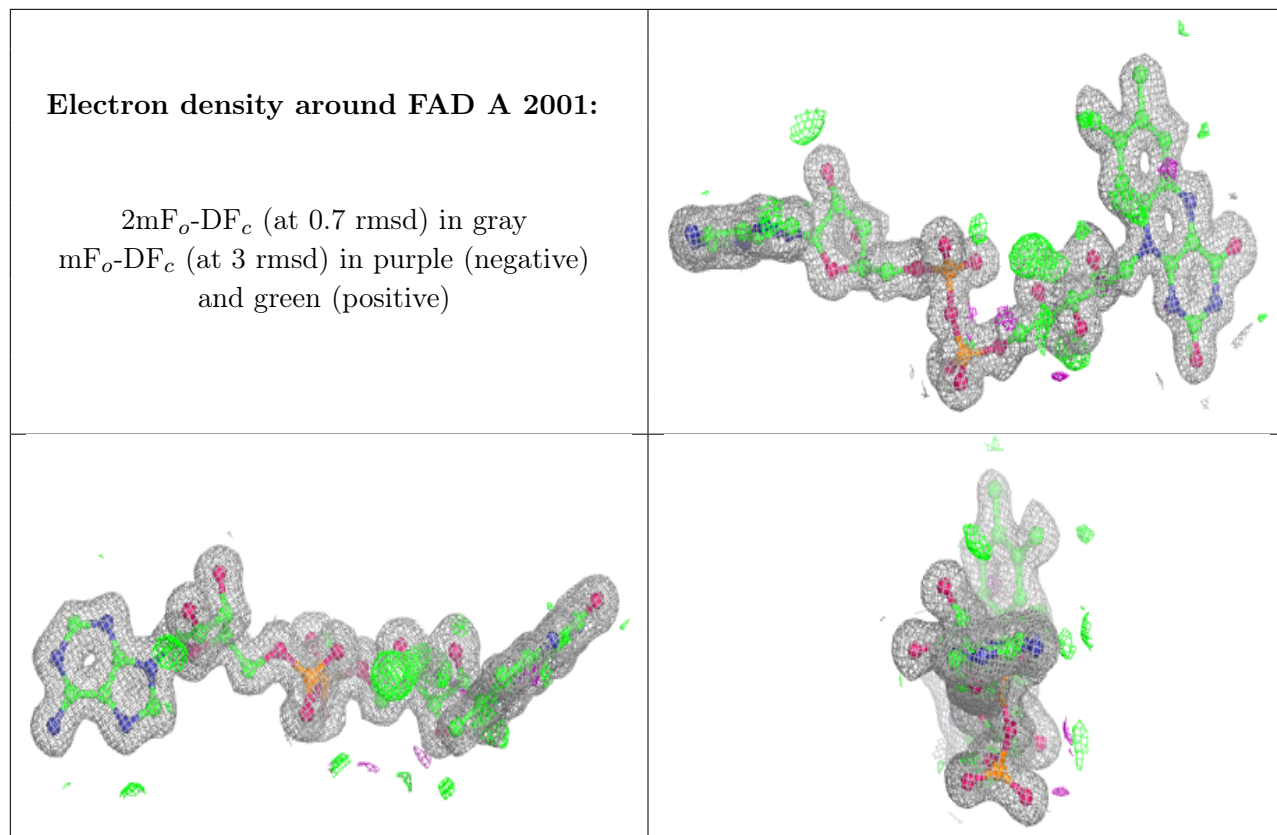
Electron density around FAD C 2003:

$2mF_o-DF_c$ (at 0.7 rmsd) in gray
 mF_o-DF_c (at 3 rmsd) in purple (negative)
and green (positive)

**Electron density around FAD D 2004:**

$2mF_o-DF_c$ (at 0.7 rmsd) in gray
 mF_o-DF_c (at 3 rmsd) in purple (negative)
and green (positive)





6.5 Other polymers [i](#)

There are no such residues in this entry.