



# Full wwPDB X-ray Structure Validation Report ⓘ

Jan 7, 2024 – 11:59 pm GMT

PDB ID : 6F6U  
Title : Crystal structure of the PDE4D catalytic domain in complex with GEBR-7b  
Authors : Prosdocimi, T.; Donini, S.; Parisini, E.  
Deposited on : 2017-12-06  
Resolution : 1.83 Å(reported)

This is a Full wwPDB X-ray Structure Validation Report for a publicly released PDB entry.

We welcome your comments at [validation@mail.wwpdb.org](mailto:validation@mail.wwpdb.org)

A user guide is available at

<https://www.wwpdb.org/validation/2017/XrayValidationReportHelp>

with specific help available everywhere you see the ⓘ symbol.

The types of validation reports are described at

<http://www.wwpdb.org/validation/2017/FAQs#types>.

---

The following versions of software and data (see [references ⓘ](#)) were used in the production of this report:

MolProbity : 4.02b-467  
Mogul : 1.8.4, CSD as541be (2020)  
Xtriage (Phenix) : 1.13  
EDS : 2.36  
buster-report : 1.1.7 (2018)  
Percentile statistics : 20191225.v01 (using entries in the PDB archive December 25th 2019)  
Refmac : 5.8.0158  
CCP4 : 7.0.044 (Gargrove)  
Ideal geometry (proteins) : Engh & Huber (2001)  
Ideal geometry (DNA, RNA) : Parkinson et al. (1996)  
Validation Pipeline (wwPDB-VP) : 2.36

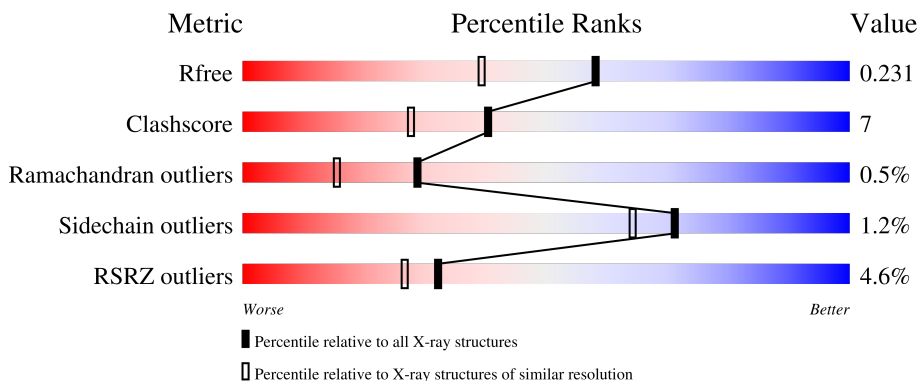
# 1 Overall quality at a glance

The following experimental techniques were used to determine the structure:

*X-RAY DIFFRACTION*

The reported resolution of this entry is 1.83 Å.

Percentile scores (ranging between 0-100) for global validation metrics of the entry are shown in the following graphic. The table shows the number of entries on which the scores are based.



Metric	Whole archive (#Entries)	Similar resolution (#Entries, resolution range(Å))
$R_{free}$	130704	7484 (1.84-1.80)
Clashscore	141614	8401 (1.84-1.80)
Ramachandran outliers	138981	8290 (1.84-1.80)
Sidechain outliers	138945	8290 (1.84-1.80)
RSRZ outliers	127900	7371 (1.84-1.80)

The table below summarises the geometric issues observed across the polymeric chains and their fit to the electron density. The red, orange, yellow and green segments of the lower bar indicate the fraction of residues that contain outliers for  $\geq 3$ , 2, 1 and 0 types of geometric quality criteria respectively. A grey segment represents the fraction of residues that are not modelled. The numeric value for each fraction is indicated below the corresponding segment, with a dot representing fractions  $\leq 5\%$ . The upper red bar (where present) indicates the fraction of residues that have poor fit to the electron density. The numeric value is given above the bar.

Mol	Chain	Length	Quality of chain
1	A	343	
1	B	343	

The following table lists non-polymeric compounds, carbohydrate monomers and non-standard residues in protein, DNA, RNA chains that are outliers for geometric or electron-density-fit criteria:

Mol	Type	Chain	Res	Chirality	Geometry	Clashes	Electron density
5	GOL	A	605	-	-	-	X

## 2 Entry composition i

There are 6 unique types of molecules in this entry. The entry contains 6001 atoms, of which 76 are hydrogens and 0 are deuteriums.

In the tables below, the ZeroOcc column contains the number of atoms modelled with zero occupancy, the AltConf column contains the number of residues with at least one atom in alternate conformation and the Trace column contains the number of residues modelled with at most 2 atoms.

- Molecule 1 is a protein called cAMP-specific 3',5'-cyclic phosphodiesterase 4D.

Mol	Chain	Residues	Atoms					ZeroOcc	AltConf	Trace
			Total	C	N	O	S			
1	A	328	2658	1684	452	506	16	0	5	0
1	B	324	2640	1674	449	501	16	0	5	0

There are 16 discrepancies between the modelled and reference sequences:

Chain	Residue	Modelled	Actual	Comment	Reference
A	243	MET	-	initiating methionine	UNP Q08499
A	579	ALA	-	expression tag	UNP Q08499
A	580	HIS	-	expression tag	UNP Q08499
A	581	HIS	-	expression tag	UNP Q08499
A	582	HIS	-	expression tag	UNP Q08499
A	583	HIS	-	expression tag	UNP Q08499
A	584	HIS	-	expression tag	UNP Q08499
A	585	HIS	-	expression tag	UNP Q08499
B	243	MET	-	initiating methionine	UNP Q08499
B	579	ALA	-	expression tag	UNP Q08499
B	580	HIS	-	expression tag	UNP Q08499
B	581	HIS	-	expression tag	UNP Q08499
B	582	HIS	-	expression tag	UNP Q08499
B	583	HIS	-	expression tag	UNP Q08499
B	584	HIS	-	expression tag	UNP Q08499
B	585	HIS	-	expression tag	UNP Q08499

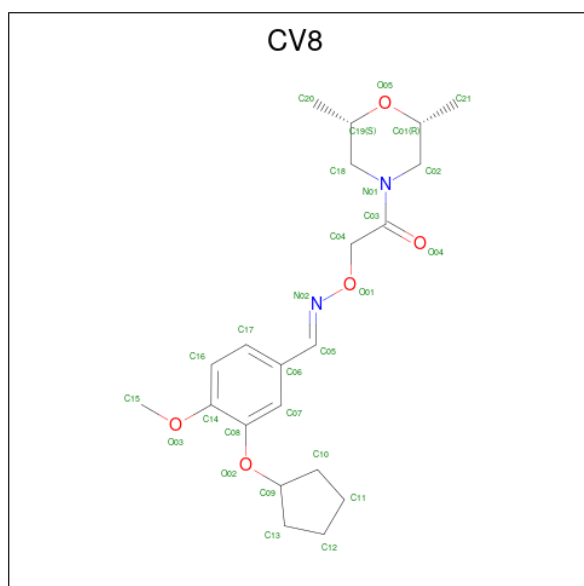
- Molecule 2 is MAGNESIUM ION (three-letter code: MG) (formula: Mg).

Mol	Chain	Residues	Atoms		ZeroOcc	AltConf
2	A	2	Total	Mg	0	0
			2	2		
2	B	1	Total	Mg	0	0
			1	1		

- Molecule 3 is ZINC ION (three-letter code: ZN) (formula: Zn).

Mol	Chain	Residues	Atoms		ZeroOcc	AltConf
3	A	1	Total	Zn	0	0
			1	1		
3	B	1	Total	Zn	0	0
			1	1		

- Molecule 4 is 2-[(E)-(3-cyclopentyloxy-4-methoxy-phenyl)methylideneamino]oxy-1-[(2R,6S)-2,6-dimethylmorpholin-4-yl]ethanone (three-letter code: CV8) (formula: C<sub>21</sub>H<sub>30</sub>N<sub>2</sub>O<sub>5</sub>) (labeled as "Ligand of Interest" by depositor).



Mol	Chain	Residues	Atoms					ZeroOcc	AltConf
4	A	1	Total	C	H	N	O	0	0
			58	21	30	2	5		
4	B	1	Total	C	H	N	O	0	0
			58	21	30	2	5		

- Molecule 5 is GLYCEROL (three-letter code: GOL) (formula: C<sub>3</sub>H<sub>8</sub>O<sub>3</sub>).



Mol	Chain	Residues	Atoms			ZeroOcc	AltConf	
			Total	C	H			O
5	A	1	14	3	8	3	0	0
5	B	1	14	3	8	3	0	0

- Molecule 6 is water.

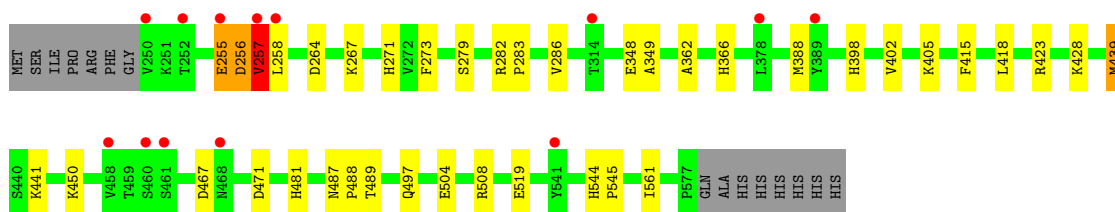
Mol	Chain	Residues	Atoms		ZeroOcc	AltConf
			Total	O		
6	A	301	301	301	0	0
6	B	253	253	253	0	0

### 3 Residue-property plots [i](#)

These plots are drawn for all protein, RNA, DNA and oligosaccharide chains in the entry. The first graphic for a chain summarises the proportions of the various outlier classes displayed in the second graphic. The second graphic shows the sequence view annotated by issues in geometry and electron density. Residues are color-coded according to the number of geometric quality criteria for which they contain at least one outlier: green = 0, yellow = 1, orange = 2 and red = 3 or more. A red dot above a residue indicates a poor fit to the electron density ( $RSRZ > 2$ ). Stretches of 2 or more consecutive residues without any outlier are shown as a green connector. Residues present in the sample, but not in the model, are shown in grey.

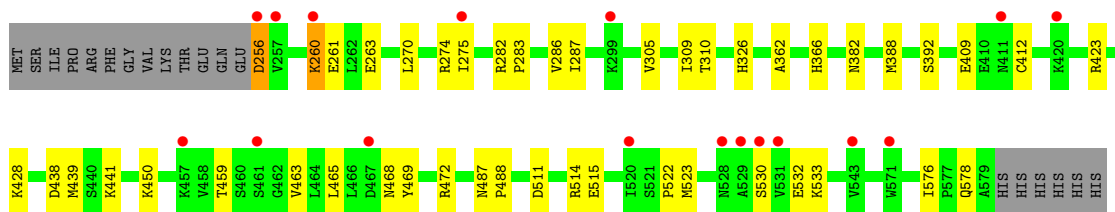
- Molecule 1: cAMP-specific 3',5'-cyclic phosphodiesterase 4D

Chain A: 4% 84% 10% . . .



- Molecule 1: cAMP-specific 3',5'-cyclic phosphodiesterase 4D

Chain B: 5% 81% 13% . 6%



## 4 Data and refinement statistics

Property	Value	Source
Space group	P 21 21 21	Depositor
Cell constants a, b, c, $\alpha$ , $\beta$ , $\gamma$	64.83Å 98.94Å 119.53Å 90.00° 90.00° 90.00°	Depositor
Resolution (Å)	45.71 – 1.83 45.71 – 1.83	Depositor EDS
% Data completeness (in resolution range)	98.6 (45.71-1.83) 98.6 (45.71-1.83)	Depositor EDS
$R_{merge}$	0.11	Depositor
$R_{sym}$	(Not available)	Depositor
$\langle I/\sigma(I) \rangle$ <sup>1</sup>	1.57 (at 1.83Å)	Xtrriage
Refinement program	PHENIX 1.9_1692	Depositor
R, $R_{free}$	0.185 , 0.230 0.187 , 0.231	Depositor DCC
$R_{free}$ test set	3428 reflections (5.06%)	wwPDB-VP
Wilson B-factor (Å <sup>2</sup> )	24.7	Xtrriage
Anisotropy	0.836	Xtrriage
Bulk solvent $k_{sol}$ (e/Å <sup>3</sup> ), $B_{sol}$ (Å <sup>2</sup> )	0.33 , 44.7	EDS
L-test for twinning <sup>2</sup>	$\langle  L  \rangle = 0.48$ , $\langle L^2 \rangle = 0.32$	Xtrriage
Estimated twinning fraction	No twinning to report.	Xtrriage
$F_o, F_c$ correlation	0.95	EDS
Total number of atoms	6001	wwPDB-VP
Average B, all atoms (Å <sup>2</sup> )	26.0	wwPDB-VP

Xtrriage's analysis on translational NCS is as follows: *The largest off-origin peak in the Patterson function is 4.15% of the height of the origin peak. No significant pseudotranslation is detected.*

<sup>1</sup>Intensities estimated from amplitudes.

<sup>2</sup>Theoretical values of  $\langle |L| \rangle$ ,  $\langle L^2 \rangle$  for acentric reflections are 0.5, 0.333 respectively for untwinned datasets, and 0.375, 0.2 for perfectly twinned datasets.



## 5 Model quality [i](#)

### 5.1 Standard geometry [i](#)

Bond lengths and bond angles in the following residue types are not validated in this section: GOL, CV8, ZN, MG

The Z score for a bond length (or angle) is the number of standard deviations the observed value is removed from the expected value. A bond length (or angle) with  $|Z| > 5$  is considered an outlier worth inspection. RMSZ is the root-mean-square of all Z scores of the bond lengths (or angles).

Mol	Chain	Bond lengths		Bond angles	
		RMSZ	# Z  >5	RMSZ	# Z  >5
1	A	0.35	0/2727	0.48	0/3705
1	B	0.33	0/2709	0.47	0/3678
All	All	0.34	0/5436	0.48	0/7383

There are no bond length outliers.

There are no bond angle outliers.

There are no chirality outliers.

There are no planarity outliers.

### 5.2 Too-close contacts [i](#)

In the following table, the Non-H and H(model) columns list the number of non-hydrogen atoms and hydrogen atoms in the chain respectively. The H(added) column lists the number of hydrogen atoms added and optimized by MolProbity. The Clashes column lists the number of clashes within the asymmetric unit, whereas Symm-Clashes lists symmetry-related clashes.

Mol	Chain	Non-H	H(model)	H(added)	Clashes	Symm-Clashes
1	A	2658	0	2611	43	0
1	B	2640	0	2618	39	0
2	A	2	0	0	0	0
2	B	1	0	0	0	0
3	A	1	0	0	0	0
3	B	1	0	0	0	0
4	A	28	30	0	0	0
4	B	28	30	0	0	0
5	A	6	8	8	2	0
5	B	6	8	8	0	0
6	A	301	0	0	11	0

*Continued on next page...*

*Continued from previous page...*

Mol	Chain	Non-H	H(model)	H(added)	Clashes	Symm-Clashes
6	B	253	0	0	9	0
All	All	5925	76	5245	76	0

The all-atom clashscore is defined as the number of clashes found per 1000 atoms (including hydrogen atoms). The all-atom clashscore for this structure is 7.

All (76) close contacts within the same asymmetric unit are listed below, sorted by their clash magnitude.

Atom-1	Atom-2	Interatomic distance (Å)	Clash overlap (Å)
1:A:388[B]:MET:CE	1:B:388[B]:MET:HG3	2.07	0.84
1:A:388[B]:MET:HE2	1:B:388[B]:MET:HG3	1.64	0.80
1:B:459:THR:HG22	1:B:465:LEU:HD21	1.63	0.80
1:A:255:GLU:HA	1:A:256:ASP:HB2	1.65	0.76
1:A:467:ASP:OD2	6:A:701:HOH:O	2.03	0.75
1:A:388[B]:MET:HG3	1:B:388[B]:MET:HE2	1.71	0.73
1:B:326:HIS:NE2	6:B:704:HOH:O	2.25	0.69
1:A:273:PHE:CZ	1:A:497[B]:GLN:HG2	2.27	0.69
1:A:439[A]:MET:HE1	6:A:775:HOH:O	1.94	0.67
1:A:471:ASP:OD2	6:A:701:HOH:O	2.11	0.67
1:B:274:ARG:HD3	6:B:891:HOH:O	1.98	0.64
1:B:450:LYS:NZ	6:B:702:HOH:O	2.25	0.63
1:A:388[B]:MET:HE3	1:B:388[B]:MET:HG3	1.80	0.62
1:B:388[B]:MET:HE1	6:B:815:HOH:O	1.99	0.62
1:A:402:VAL:HG22	5:A:605:GOL:H12	1.81	0.61
1:A:439[A]:MET:HA	1:A:439[A]:MET:CE	2.30	0.61
1:B:256:ASP:HB2	6:B:904:HOH:O	2.00	0.61
1:A:450:LYS:NZ	6:A:706:HOH:O	2.30	0.60
1:A:388[B]:MET:SD	1:B:388[B]:MET:HE3	2.42	0.60
1:B:409:GLU:O	6:B:701:HOH:O	2.16	0.59
1:A:256:ASP:OD1	1:A:257:VAL:N	2.35	0.59
1:A:441:LYS:NZ	6:A:711:HOH:O	2.34	0.59
1:B:530:SER:HA	6:B:703:HOH:O	2.03	0.58
1:B:428:LYS:HE3	1:B:469:TYR:CZ	2.39	0.58
1:A:388[B]:MET:HG3	1:B:388[B]:MET:CE	2.33	0.58
1:B:438:ASP:HB3	1:B:441:LYS:HD2	1.85	0.57
1:A:504:GLU:OE2	1:A:508:ARG:NH2	2.37	0.56
1:B:305:VAL:O	1:B:309:ILE:HD13	2.05	0.56
1:B:382:ASN:ND2	6:B:711:HOH:O	2.37	0.56
1:A:398:HIS:HE1	5:A:605:GOL:H11	1.72	0.55
1:A:256:ASP:C	1:A:258:LEU:H	2.10	0.54
1:B:256:ASP:OD1	1:B:256:ASP:N	2.39	0.54

*Continued on next page...*

*Continued from previous page...*

Atom-1	Atom-2	Interatomic distance (Å)	Clash overlap (Å)
1:A:423:ARG:HD3	6:A:954:HOH:O	2.07	0.54
1:B:511:ASP:OD1	1:B:514:ARG:NH2	2.40	0.54
1:B:270:LEU:HD21	1:B:275:ILE:HD12	1.90	0.53
1:A:487:ASN:HB2	1:A:488:PRO:HD3	1.91	0.52
1:B:511:ASP:O	1:B:515:GLU:HG3	2.11	0.51
1:A:489:THR:HB	1:A:561:ILE:HG23	1.93	0.51
1:B:261:GLU:CD	1:B:274:ARG:HD2	2.31	0.51
1:A:256:ASP:O	1:A:257:VAL:HG22	2.10	0.51
1:A:349:ALA:HA	6:A:898:HOH:O	2.12	0.50
1:B:576:ILE:O	1:B:578:GLN:HG3	2.10	0.50
1:A:264:ASP:OD1	1:A:267:LYS:HE2	2.12	0.50
1:B:282:ARG:O	1:B:286:VAL:HG22	2.13	0.48
1:A:439[A]:MET:HA	1:A:439[A]:MET:HE2	1.94	0.48
1:A:441:LYS:HE2	6:A:955:HOH:O	2.13	0.47
1:A:271:HIS:CE1	1:A:273:PHE:HB2	2.50	0.47
1:B:487:ASN:HB2	1:B:488:PRO:HD3	1.98	0.46
1:A:544:HIS:HB3	1:A:545:PRO:HD3	1.98	0.44
1:A:428:LYS:HD3	6:A:976:HOH:O	2.15	0.44
1:B:310:THR:HG22	1:B:412:CYS:SG	2.58	0.44
1:A:256:ASP:C	1:A:258:LEU:N	2.72	0.43
1:B:283:PRO:HA	1:B:286:VAL:HG22	2.00	0.43
1:A:439[A]:MET:CE	1:A:439[A]:MET:CA	2.95	0.43
1:A:362:ALA:O	1:A:366:HIS:HB3	2.18	0.43
1:A:256:ASP:O	1:A:258:LEU:N	2.51	0.42
1:A:439[A]:MET:CA	1:A:439[A]:MET:HE3	2.49	0.42
1:B:459:THR:CG2	1:B:465:LEU:HD21	2.43	0.42
1:A:519:GLU:OE2	6:A:702:HOH:O	2.22	0.42
1:B:260[B]:LYS:HD2	1:B:263:GLU:CD	2.40	0.42
1:B:459:THR:OG1	1:B:463:VAL:HG22	2.19	0.42
1:A:439[A]:MET:HE2	1:A:481:HIS:HE1	1.85	0.42
1:B:439:MET:HG2	6:B:922:HOH:O	2.20	0.42
1:B:532:GLU:H	1:B:532:GLU:CD	2.23	0.42
1:A:271:HIS:HE1	1:A:273:PHE:HB2	1.85	0.41
1:A:279:SER:HB2	1:A:286:VAL:HG21	2.02	0.41
1:B:468:ASN:O	1:B:472:ARG:HG3	2.19	0.41
1:A:439[A]:MET:CE	1:A:481:HIS:HE1	2.33	0.41
1:B:282:ARG:N	1:B:283:PRO:CD	2.84	0.41
1:B:362:ALA:O	1:B:366:HIS:HB3	2.21	0.41
1:B:522:PRO:O	1:B:523:MET:HB2	2.21	0.41
1:B:530:SER:OG	1:B:533:LYS:HG3	2.21	0.41
1:A:405:LYS:HB2	6:A:824:HOH:O	2.21	0.41

*Continued on next page...*

*Continued from previous page...*

Atom-1	Atom-2	Interatomic distance (Å)	Clash overlap (Å)
1:B:286:VAL:HG23	1:B:287:ILE:N	2.36	0.41
1:A:282:ARG:N	1:A:283:PRO:CD	2.85	0.40
1:A:415:PHE:HB3	1:A:418:LEU:HD22	2.03	0.40

There are no symmetry-related clashes.

## 5.3 Torsion angles [i](#)

### 5.3.1 Protein backbone [i](#)

In the following table, the Percentiles column shows the percent Ramachandran outliers of the chain as a percentile score with respect to all X-ray entries followed by that with respect to entries of similar resolution.

The Analysed column shows the number of residues for which the backbone conformation was analysed, and the total number of residues.

Mol	Chain	Analysed	Favoured	Allowed	Outliers	Percentiles	
1	A	331/343 (96%)	324 (98%)	4 (1%)	3 (1%)	17	6
1	B	327/343 (95%)	321 (98%)	6 (2%)	0	100	100
All	All	658/686 (96%)	645 (98%)	10 (2%)	3 (0%)	29	15

All (3) Ramachandran outliers are listed below:

Mol	Chain	Res	Type
1	A	255	GLU
1	A	256	ASP
1	A	257	VAL

### 5.3.2 Protein sidechains [i](#)

In the following table, the Percentiles column shows the percent sidechain outliers of the chain as a percentile score with respect to all X-ray entries followed by that with respect to entries of similar resolution.

The Analysed column shows the number of residues for which the sidechain conformation was analysed, and the total number of residues.

*Continued on next page...*

Continued from previous page...

Mol	Chain	Analysed	Rotameric	Outliers	Percentiles	
1	A	299/313 (96%)	295 (99%)	4 (1%)	69	61
1	B	300/313 (96%)	294 (98%)	6 (2%)	55	43
All	All	599/626 (96%)	589 (98%)	10 (2%)	71	50

All (10) residues with a non-rotameric sidechain are listed below:

Mol	Chain	Res	Type
1	A	257	VAL
1	A	348	GLU
1	A	439[A]	MET
1	A	439[B]	MET
1	B	256	ASP
1	B	260[A]	LYS
1	B	260[B]	LYS
1	B	392[A]	SER
1	B	392[B]	SER
1	B	423	ARG

Sometimes sidechains can be flipped to improve hydrogen bonding and reduce clashes. There are no such sidechains identified.

### 5.3.3 RNA [i](#)

There are no RNA molecules in this entry.

### 5.4 Non-standard residues in protein, DNA, RNA chains [i](#)

There are no non-standard protein/DNA/RNA residues in this entry.

### 5.5 Carbohydrates [i](#)

There are no monosaccharides in this entry.

### 5.6 Ligand geometry [i](#)

Of 9 ligands modelled in this entry, 5 are monoatomic - leaving 4 for Mogul analysis.

In the following table, the Counts columns list the number of bonds (or angles) for which Mogul statistics could be retrieved, the number of bonds (or angles) that are observed in the model and the number of bonds (or angles) that are defined in the Chemical Component Dictionary. The Link column lists molecule types, if any, to which the group is linked. The Z score for a bond length (or angle) is the number of standard deviations the observed value is removed from the expected value. A bond length (or angle) with  $|Z| > 2$  is considered an outlier worth inspection. RMSZ is the root-mean-square of all Z scores of the bond lengths (or angles).

Mol	Type	Chain	Res	Link	Bond lengths			Bond angles		
					Counts	RMSZ	# Z  > 2	Counts	RMSZ	# Z  > 2
4	CV8	A	604	-	30,30,30	2.41	9 (30%)	39,40,40	2.60	10 (25%)
5	GOL	A	605	-	5,5,5	0.40	0	5,5,5	0.39	0
5	GOL	B	604	-	5,5,5	0.40	0	5,5,5	0.13	0
4	CV8	B	603	-	30,30,30	2.34	9 (30%)	39,40,40	2.16	8 (20%)

In the following table, the Chirals column lists the number of chiral outliers, the number of chiral centers analysed, the number of these observed in the model and the number defined in the Chemical Component Dictionary. Similar counts are reported in the Torsion and Rings columns. '-' means no outliers of that kind were identified.

Mol	Type	Chain	Res	Link	Chirals	Torsions	Rings
4	CV8	A	604	-	-	3/17/36/36	0/3/3/3
5	GOL	A	605	-	-	2/4/4/4	-
5	GOL	B	604	-	-	3/4/4/4	-
4	CV8	B	603	-	-	1/17/36/36	0/3/3/3

All (18) bond length outliers are listed below:

Mol	Chain	Res	Type	Atoms	Z	Observed(Å)	Ideal(Å)
4	A	604	CV8	O01-C04	5.90	1.49	1.42
4	A	604	CV8	C11-C10	-5.89	1.27	1.51
4	B	603	CV8	O01-C04	5.82	1.49	1.42
4	B	603	CV8	C11-C10	-5.67	1.28	1.51
4	A	604	CV8	C13-C09	-5.30	1.24	1.52
4	B	603	CV8	C13-C09	-5.10	1.25	1.52
4	B	603	CV8	O03-C15	-3.97	1.30	1.42
4	A	604	CV8	O03-C15	-3.81	1.31	1.42
4	A	604	CV8	C07-C06	-3.63	1.33	1.39
4	B	603	CV8	C07-C06	-3.49	1.34	1.39
4	A	604	CV8	C17-C06	-3.46	1.32	1.39
4	B	603	CV8	C17-C06	-3.27	1.33	1.39
4	A	604	CV8	O02-C08	3.11	1.42	1.37
4	A	604	CV8	C06-C05	2.92	1.53	1.47

*Continued on next page...*

Continued from previous page...

Mol	Chain	Res	Type	Atoms	Z	Observed(Å)	Ideal(Å)
4	B	603	CV8	O02-C08	2.90	1.42	1.37
4	B	603	CV8	C06-C05	2.68	1.52	1.47
4	B	603	CV8	C16-C14	-2.27	1.34	1.39
4	A	604	CV8	C16-C14	-2.23	1.34	1.39

All (18) bond angle outliers are listed below:

Mol	Chain	Res	Type	Atoms	Z	Observed(°)	Ideal(°)
4	A	604	CV8	O01-N02-C05	9.88	125.98	110.80
4	A	604	CV8	C15-O03-C14	6.48	127.31	117.53
4	B	603	CV8	C15-O03-C14	6.34	127.10	117.53
4	B	603	CV8	O01-N02-C05	5.43	119.14	110.80
4	B	603	CV8	C04-O01-N02	5.41	115.12	108.10
4	A	604	CV8	O04-C03-C04	-4.70	109.28	120.66
4	A	604	CV8	C04-O01-N02	4.58	114.04	108.10
4	A	604	CV8	C19-C18-N01	4.06	116.46	110.35
4	B	603	CV8	C11-C12-C13	-3.85	93.05	105.99
4	B	603	CV8	O04-C03-C04	-3.83	111.39	120.66
4	B	603	CV8	O04-C03-N01	3.79	129.42	122.05
4	A	604	CV8	O04-C03-N01	3.36	128.59	122.05
4	A	604	CV8	C11-C12-C13	-3.23	95.11	105.99
4	B	603	CV8	C19-O05-C01	3.11	119.00	112.03
4	A	604	CV8	C18-N01-C02	2.99	120.53	114.49
4	B	603	CV8	C19-C18-N01	-2.52	106.56	110.35
4	A	604	CV8	C04-C03-N01	2.24	122.13	116.93
4	A	604	CV8	C06-C07-C08	2.01	122.88	120.17

There are no chirality outliers.

All (9) torsion outliers are listed below:

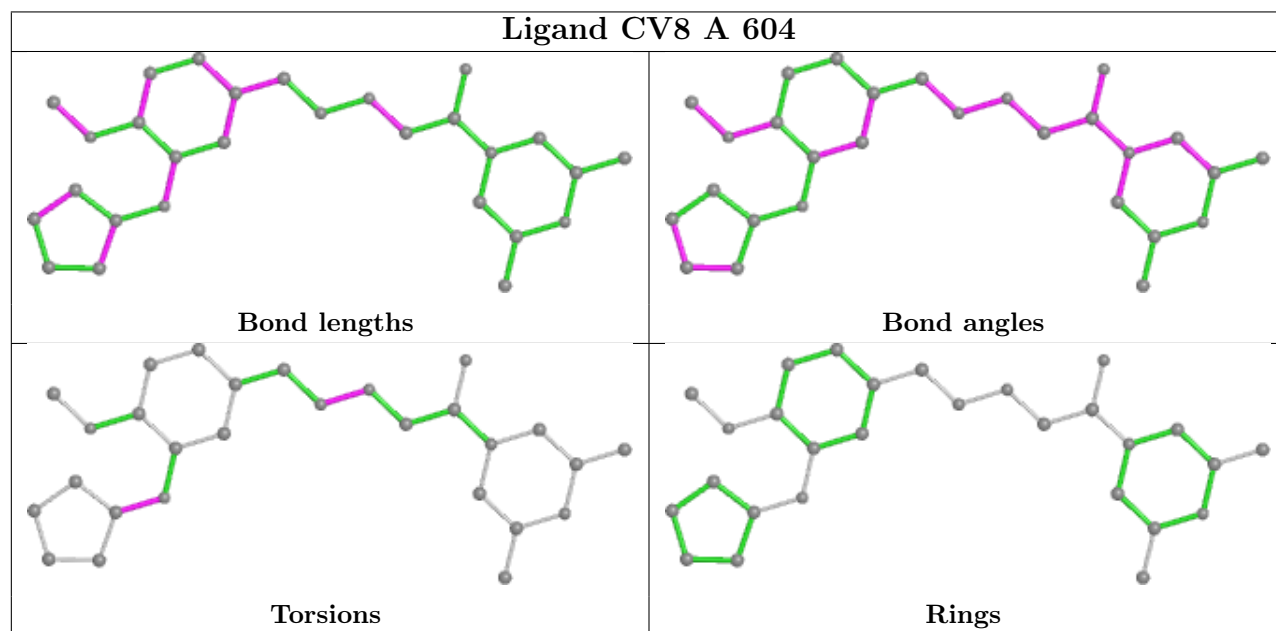
Mol	Chain	Res	Type	Atoms
4	A	604	CV8	C05-N02-O01-C04
4	A	604	CV8	C10-C09-O02-C08
5	A	605	GOL	O1-C1-C2-C3
5	B	604	GOL	C1-C2-C3-O3
5	A	605	GOL	O1-C1-C2-O2
5	B	604	GOL	O2-C2-C3-O3
4	A	604	CV8	C13-C09-O02-C08
4	B	603	CV8	C05-N02-O01-C04
5	B	604	GOL	O1-C1-C2-O2

There are no ring outliers.

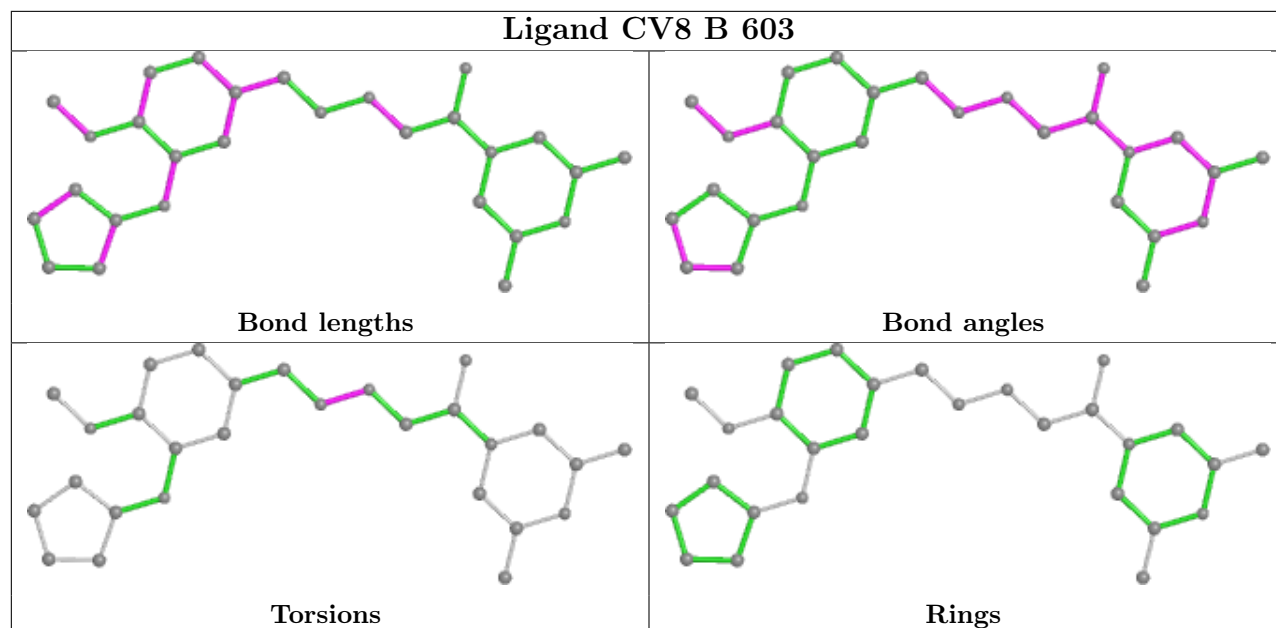
1 monomer is involved in 2 short contacts:

Mol	Chain	Res	Type	Clashes	Symm-Clashes
5	A	605	GOL	2	0

The following is a two-dimensional graphical depiction of Mogul quality analysis of bond lengths, bond angles, torsion angles, and ring geometry for all instances of the Ligand of Interest. In addition, ligands with molecular weight > 250 and outliers as shown on the validation Tables will also be included. For torsion angles, if less than 5% of the Mogul distribution of torsion angles is within 10 degrees of the torsion angle in question, then that torsion angle is considered an outlier. Any bond that is central to one or more torsion angles identified as an outlier by Mogul will be highlighted in the graph. For rings, the root-mean-square deviation (RMSD) between the ring in question and similar rings identified by Mogul is calculated over all ring torsion angles. If the average RMSD is greater than 60 degrees and the minimal RMSD between the ring in question and any Mogul-identified rings is also greater than 60 degrees, then that ring is considered an outlier. The outliers are highlighted in purple. The color gray indicates Mogul did not find sufficient equivalents in the CSD to analyse the geometry.







## 5.7 Other polymers [i](#)

There are no such residues in this entry.

## 5.8 Polymer linkage issues [i](#)

There are no chain breaks in this entry.

## 6 Fit of model and data [i](#)

### 6.1 Protein, DNA and RNA chains [i](#)

In the following table, the column labelled ‘#RSRZ > 2’ contains the number (and percentage) of RSRZ outliers, followed by percent RSRZ outliers for the chain as percentile scores relative to all X-ray entries and entries of similar resolution. The OWAB column contains the minimum, median, 95<sup>th</sup> percentile and maximum values of the occupancy-weighted average B-factor per residue. The column labelled ‘Q < 0.9’ lists the number of (and percentage) of residues with an average occupancy less than 0.9.

Mol	Chain	Analysed	<RSRZ>	#RSRZ>2	OWAB(Å <sup>2</sup> )	Q<0.9
1	A	328/343 (95%)	0.37	13 (3%) 38 32	13, 23, 38, 66	0
1	B	324/343 (94%)	0.53	17 (5%) 27 22	14, 25, 44, 52	0
All	All	652/686 (95%)	0.45	30 (4%) 32 27	13, 23, 43, 66	0

All (30) RSRZ outliers are listed below:

Mol	Chain	Res	Type	RSRZ
1	A	252	THR	4.8
1	A	255	GLU	4.7
1	A	257	VAL	4.4
1	A	460	SER	4.3
1	A	461	SER	4.0
1	A	250	VAL	3.3
1	A	541	TYR	3.1
1	B	467	ASP	2.9
1	B	528	ASN	2.8
1	B	529	ALA	2.8
1	B	571	TRP	2.8
1	B	457	LYS	2.7
1	B	543	VAL	2.6
1	B	260[A]	LYS	2.6
1	A	468	ASN	2.5
1	B	411	ASN	2.5
1	B	461	SER	2.5
1	B	257	VAL	2.3
1	B	299	LYS	2.3
1	B	420	LYS	2.3
1	B	531	VAL	2.3
1	B	520	ILE	2.3
1	A	389	TYR	2.2
1	A	258	LEU	2.1

*Continued on next page...*

*Continued from previous page...*

Mol	Chain	Res	Type	RSRZ
1	A	314	THR	2.1
1	B	530	SER	2.1
1	B	256	ASP	2.1
1	B	275	ILE	2.1
1	A	378	LEU	2.1
1	A	458	VAL	2.0

## 6.2 Non-standard residues in protein, DNA, RNA chains [i](#)

There are no non-standard protein/DNA/RNA residues in this entry.

## 6.3 Carbohydrates [i](#)

There are no monosaccharides in this entry.

## 6.4 Ligands [i](#)

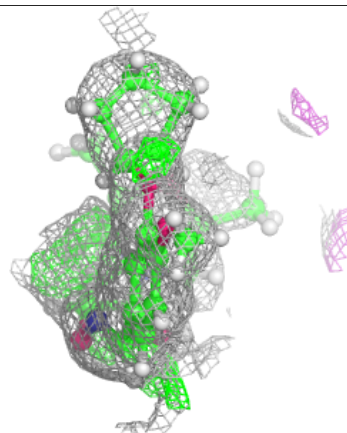
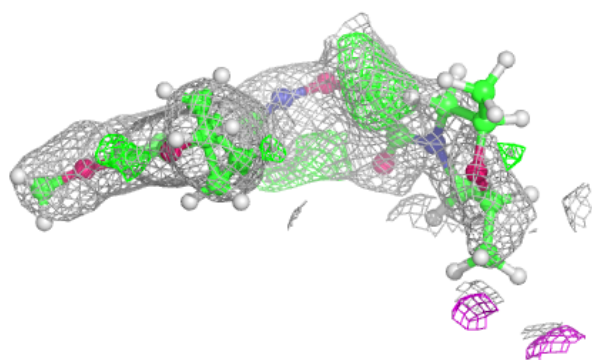
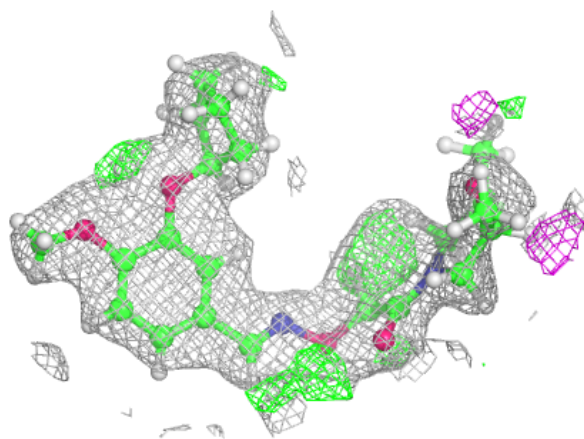
In the following table, the Atoms column lists the number of modelled atoms in the group and the number defined in the chemical component dictionary. The B-factors column lists the minimum, median, 95<sup>th</sup> percentile and maximum values of B factors of atoms in the group. The column labelled 'Q< 0.9' lists the number of atoms with occupancy less than 0.9.

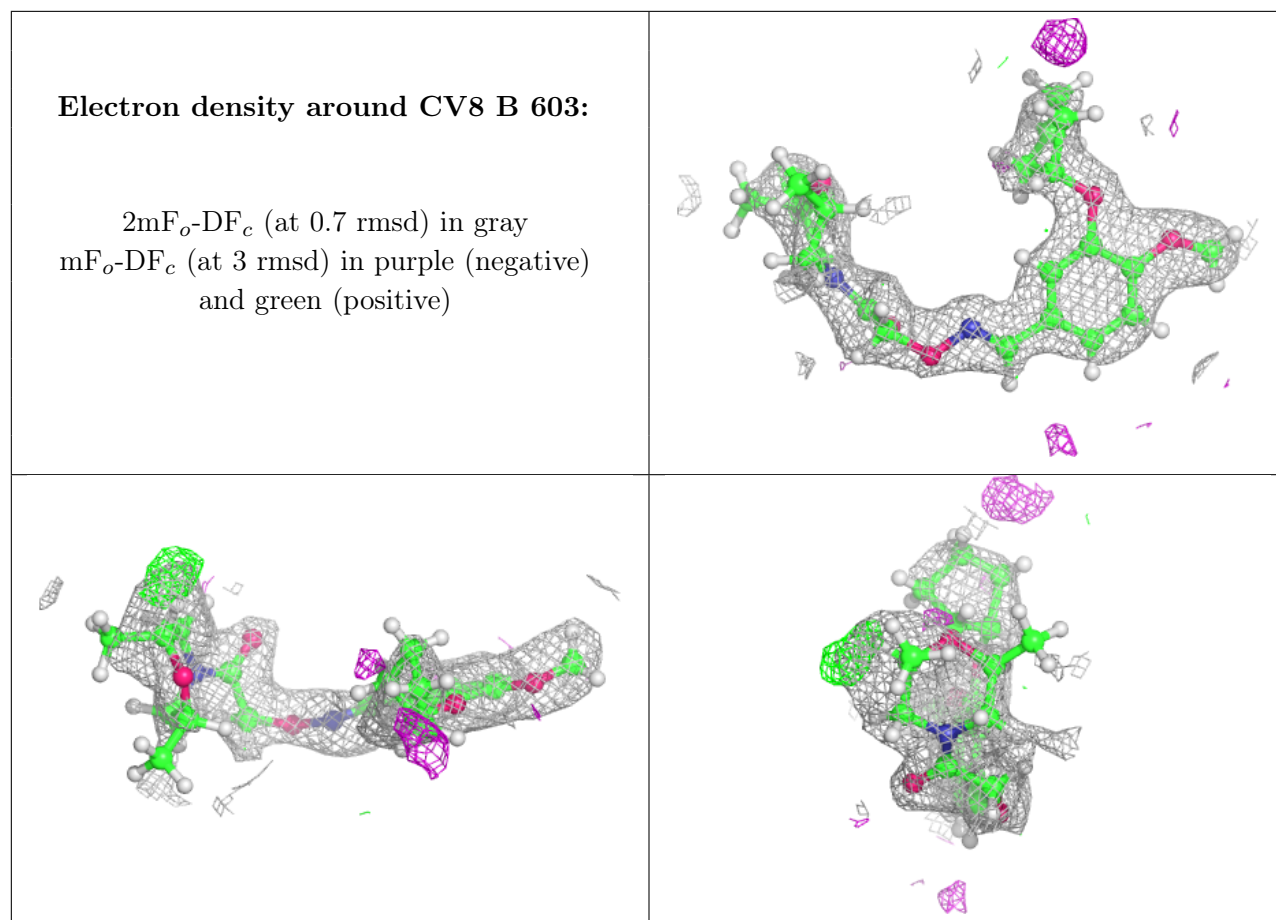
Mol	Type	Chain	Res	Atoms	RSCC	RSR	B-factors(Å <sup>2</sup> )	Q<0.9
5	GOL	B	604	6/6	0.42	0.34	53,63,68,70	0
5	GOL	A	605	6/6	0.66	0.42	19,27,32,39	14
4	CV8	A	604	28/28	0.83	0.20	15,26,51,60	58
4	CV8	B	603	28/28	0.84	0.21	18,38,50,55	58
2	MG	A	603	1/1	0.92	0.07	41,41,41,41	0
2	MG	A	601	1/1	0.99	0.12	13,13,13,13	0
3	ZN	A	602	1/1	1.00	0.06	18,18,18,18	0
3	ZN	B	602	1/1	1.00	0.08	19,19,19,19	0
2	MG	B	601	1/1	1.00	0.11	13,13,13,13	0

The following is a graphical depiction of the model fit to experimental electron density of all instances of the Ligand of Interest. In addition, ligands with molecular weight > 250 and outliers as shown on the geometry validation Tables will also be included. Each fit is shown from different orientation to approximate a three-dimensional view.

**Electron density around CV8 A 604:**

$2mF_o-DF_c$  (at 0.7 rmsd) in gray  
 $mF_o-DF_c$  (at 3 rmsd) in purple (negative)  
and green (positive)





## 6.5 Other polymers [i](#)

There are no such residues in this entry.