



Full wwPDB EM Validation Report ⓘ

Nov 22, 2022 – 10:17 PM JST

PDB ID : 7F47
EMDB ID : EMD-31445
Title : Cryo-EM structure of Rhizobium etli MprF
Authors : Nishimura, M.; Hirano, H.; Kobayashi, K.; Gill, C.P.; Phan, C.N.K.; Kise, Y.; Kusakizako, T.; Yamashita, K.; Ito, Y.; Roy, H.; Nishizawa, T.; Nureki, O.
Deposited on : 2021-06-17
Resolution : 2.70 Å(reported)
Based on initial model : 5VRV

This is a Full wwPDB EM Validation Report for a publicly released PDB entry.

We welcome your comments at validation@mail.wwpdb.org

A user guide is available at

<https://www.wwpdb.org/validation/2017/EMValidationReportHelp>

with specific help available everywhere you see the ⓘ symbol.

The types of validation reports are described at

<http://www.wwpdb.org/validation/2017/FAQs#types>.

The following versions of software and data (see [references ⓘ](#)) were used in the production of this report:

EMDB validation analysis : 0.0.1.dev43
Mogul : 1.8.5 (274361), CSD as541be (2020)
MolProbity : 4.02b-467
buster-report : 1.1.7 (2018)
Percentile statistics : 20191225.v01 (using entries in the PDB archive December 25th 2019)
MapQ : 1.9.9
Ideal geometry (proteins) : Engh & Huber (2001)
Ideal geometry (DNA, RNA) : Parkinson et al. (1996)
Validation Pipeline (wwPDB-VP) : 2.31.3

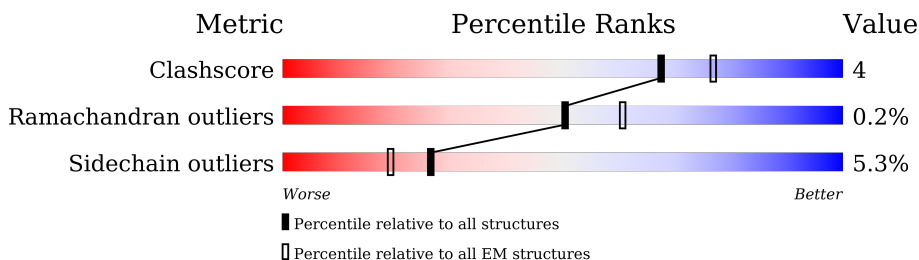
1 Overall quality at a glance

The following experimental techniques were used to determine the structure:

ELECTRON MICROSCOPY

The reported resolution of this entry is 2.70 Å.

Percentile scores (ranging between 0-100) for global validation metrics of the entry are shown in the following graphic. The table shows the number of entries on which the scores are based.



Metric	Whole archive (#Entries)	EM structures (#Entries)
Clashscore	158937	4297
Ramachandran outliers	154571	4023
Sidechain outliers	154315	3826

The table below summarises the geometric issues observed across the polymeric chains and their fit to the map. The red, orange, yellow and green segments of the bar indicate the fraction of residues that contain outliers for ≥ 3 , 2, 1 and 0 types of geometric quality criteria respectively. A grey segment represents the fraction of residues that are not modelled. The numeric value for each fraction is indicated below the corresponding segment, with a dot representing fractions $\leq 5\%$. The upper red bar (where present) indicates the fraction of residues that have poor fit to the EM map (all-atom inclusion $< 40\%$). The numeric value is given above the bar.

Mol	Chain	Length	Quality of chain
1	A	867	

2 Entry composition i

There are 4 unique types of molecules in this entry. The entry contains 6435 atoms, of which 0 are hydrogens and 0 are deuteriums.

In the tables below, the AltConf column contains the number of residues with at least one atom in alternate conformation and the Trace column contains the number of residues modelled with at most 2 atoms.

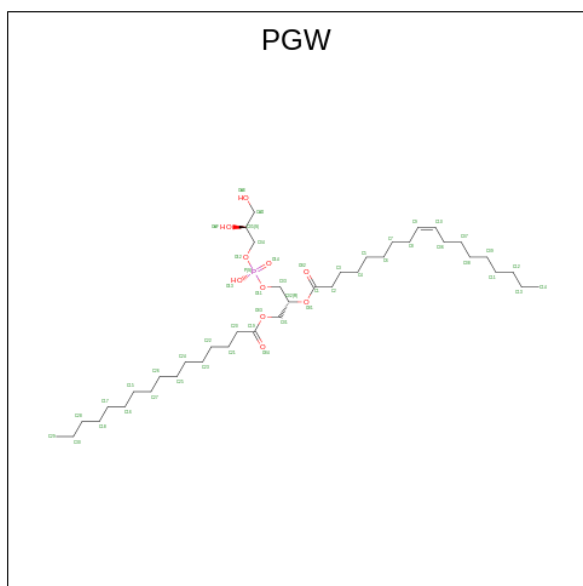
- Molecule 1 is a protein called Hypothetical conserved protein.

Mol	Chain	Residues	Atoms					AltConf	Trace
			Total	C	N	O	S		
1	A	830	6320	4134	1066	1100	20	0	0

There is a discrepancy between the modelled and reference sequences:

Chain	Residue	Modelled	Actual	Comment	Reference
A	10	MET	ILE	conflict	UNP Q2K4J4

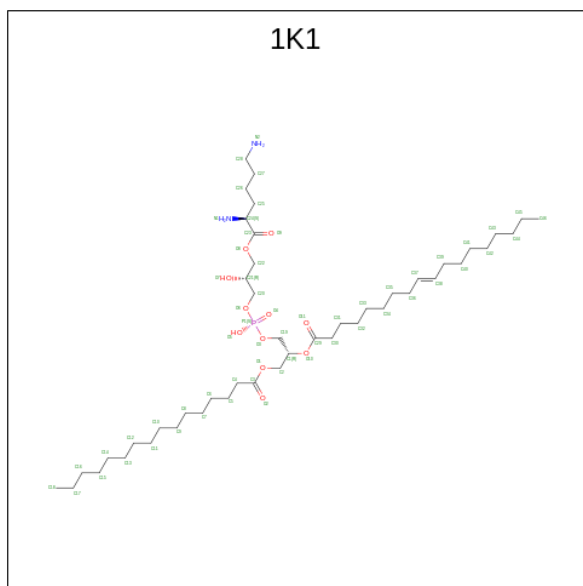
- Molecule 2 is (1R)-2-[[[(S)-{[(2S)-2,3-dihydroxypropyl]oxy}(hydroxy)phosphoryl]oxy}-1-[(hexadecanoyloxy)methyl]ethyl (9Z)-octadec-9-enoate (three-letter code: PGW) (formula: C₄₀H₇₇O₁₀P) (labeled as "Ligand of Interest" by depositor).



Mol	Chain	Residues	Atoms				AltConf
			Total	C	O	P	
2	A	1	51	40	10	1	0

- Molecule 3 is [(2R)-1-[[[(2R)-3-[(2S)-2,6-bis(azanyl)hexanoyl]oxy-2-oxidanyl-propoxy]-oxidanyl-phosphoryl]oxy-3-hexadecanoyloxy-propan-2-yl] (E)-octadec-9-enoate (three-letter code:

1K1) (formula: C₄₆H₈₉N₂O₁₁P) (labeled as "Ligand of Interest" by depositor).



Mol	Chain	Residues	Atoms					AltConf
			Total	C	N	O	P	
3	A	1	60	46	2	11	1	0

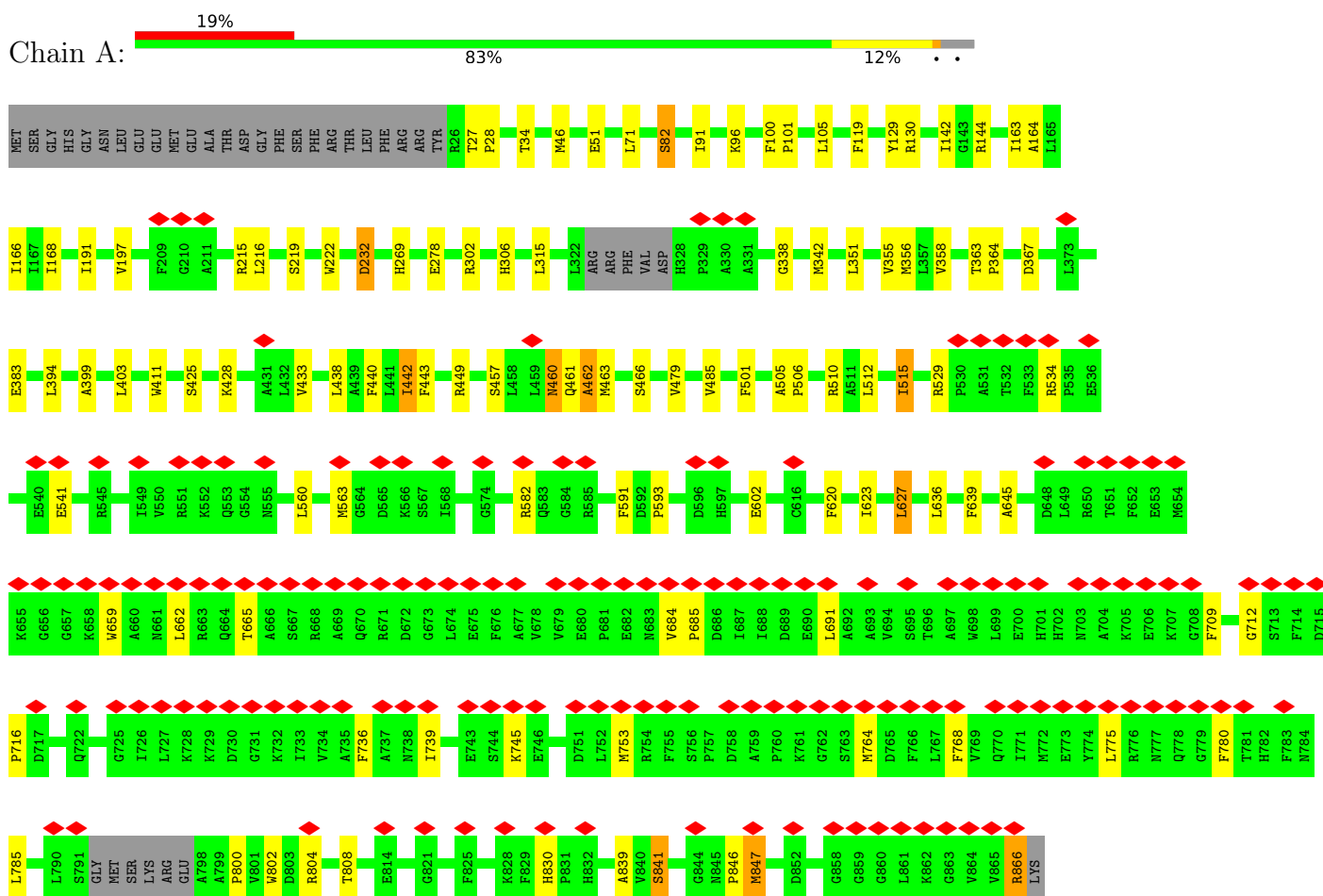
- Molecule 4 is water.

Mol	Chain	Residues	Atoms		AltConf
			Total	O	
4	A	4	4	4	0

3 Residue-property plots

These plots are drawn for all protein, RNA, DNA and oligosaccharide chains in the entry. The first graphic for a chain summarises the proportions of the various outlier classes displayed in the second graphic. The second graphic shows the sequence view annotated by issues in geometry and atom inclusion in map density. Residues are color-coded according to the number of geometric quality criteria for which they contain at least one outlier: green = 0, yellow = 1, orange = 2 and red = 3 or more. A red diamond above a residue indicates a poor fit to the EM map for this residue (all-atom inclusion < 40%). Stretches of 2 or more consecutive residues without any outlier are shown as a green connector. Residues present in the sample, but not in the model, are shown in grey.

- Molecule 1: Hypothetical conserved protein



4 Experimental information

Property	Value	Source
EM reconstruction method	SINGLE PARTICLE	Depositor
Imposed symmetry	POINT, C2	Depositor
Number of particles used	307241	Depositor
Resolution determination method	FSC 0.143 CUT-OFF	Depositor
CTF correction method	PHASE FLIPPING AND AMPLITUDE CORRECTION	Depositor
Microscope	FEI TITAN KRIOS	Depositor
Voltage (kV)	300	Depositor
Electron dose ($e^-/\text{\AA}^2$)	56	Depositor
Minimum defocus (nm)	Not provided	
Maximum defocus (nm)	Not provided	
Magnification	Not provided	
Image detector	GATAN K3 BIOQUANTUM (6k x 4k)	Depositor
Maximum map value	0.003	Depositor
Minimum map value	-0.002	Depositor
Average map value	0.000	Depositor
Map value standard deviation	0.000	Depositor
Recommended contour level	0.000299	Depositor
Map size (Å)	193.224, 193.224, 193.224	wwPDB
Map dimensions	194, 194, 194	wwPDB
Map angles (°)	90.0, 90.0, 90.0	wwPDB
Pixel spacing (Å)	0.996, 0.996, 0.996	Depositor

5 Model quality [i](#)

5.1 Standard geometry [i](#)

Bond lengths and bond angles in the following residue types are not validated in this section: 1K1, PGW

The Z score for a bond length (or angle) is the number of standard deviations the observed value is removed from the expected value. A bond length (or angle) with $|Z| > 5$ is considered an outlier worth inspection. RMSZ is the root-mean-square of all Z scores of the bond lengths (or angles).

Mol	Chain	Bond lengths		Bond angles	
		RMSZ	# Z >5	RMSZ	# Z >5
1	A	0.72	0/6464	0.83	0/8794

There are no bond length outliers.

There are no bond angle outliers.

There are no chirality outliers.

There are no planarity outliers.

5.2 Too-close contacts [i](#)

In the following table, the Non-H and H(model) columns list the number of non-hydrogen atoms and hydrogen atoms in the chain respectively. The H(added) column lists the number of hydrogen atoms added and optimized by MolProbity. The Clashes column lists the number of clashes within the asymmetric unit, whereas Symm-Clashes lists symmetry-related clashes.

Mol	Chain	Non-H	H(model)	H(added)	Clashes	Symm-Clashes
1	A	6320	0	6494	50	0
2	A	51	0	76	1	0
3	A	60	0	0	1	0
4	A	4	0	0	0	0
All	All	6435	0	6570	50	0

The all-atom clashscore is defined as the number of clashes found per 1000 atoms (including hydrogen atoms). The all-atom clashscore for this structure is 4.

All (50) close contacts within the same asymmetric unit are listed below, sorted by their clash magnitude.

Atom-1	Atom-2	Interatomic distance (Å)	Clash overlap (Å)
1:A:164:ALA:O	1:A:168:ILE:HG13	1.98	0.63
1:A:739:ILE:HD11	1:A:775:LEU:HD21	1.81	0.63
1:A:129:TYR:HA	1:A:142:ILE:HG21	1.82	0.62
1:A:563:MET:SD	1:A:712:GLY:HA2	2.43	0.59
1:A:232:ASP:OD1	3:A:902:1K1:N2	2.37	0.57
1:A:479:VAL:HG22	1:A:512:LEU:HD21	1.88	0.55
1:A:462:ALA:HB2	1:A:529:ARG:HD3	1.91	0.53
1:A:808:THR:HG21	1:A:847:MET:HG3	1.90	0.53
1:A:560:LEU:HD12	1:A:591:PHE:HE2	1.76	0.50
1:A:505:ALA:HB3	1:A:506:PRO:HD3	1.94	0.50
1:A:684:VAL:N	1:A:685:PRO:CD	2.76	0.49
1:A:399:ALA:O	1:A:403:LEU:HG	2.13	0.48
1:A:302:ARG:O	1:A:306:HIS:HB2	2.14	0.47
1:A:91:ILE:HG23	1:A:96:LYS:O	2.14	0.47
1:A:144:ARG:HG2	1:A:800:PRO:HA	1.96	0.47
1:A:163:ILE:HG13	1:A:191:ILE:HD11	1.97	0.46
1:A:623:ILE:HD11	1:A:839:ALA:HB2	1.97	0.46
1:A:358:VAL:HG13	1:A:515:ILE:HD12	1.98	0.46
1:A:659:TRP:CD1	1:A:662:LEU:HD12	2.50	0.46
1:A:351:LEU:O	1:A:355:VAL:HG23	2.16	0.46
1:A:356:MET:HB2	2:A:901:PGW:H5	1.98	0.46
1:A:27:THR:HB	1:A:28:PRO:HD3	1.98	0.45
1:A:425:SER:HA	1:A:428:LYS:HG2	1.98	0.45
1:A:364:PRO:HD3	1:A:485:VAL:HG11	1.98	0.45
1:A:411:TRP:CZ2	1:A:449:ARG:HG3	2.51	0.45
1:A:457:SER:HB3	1:A:460:ASN:HB3	1.97	0.45
1:A:620:PHE:HB3	1:A:623:ILE:CG2	2.47	0.44
1:A:716:PRO:HB2	1:A:866:ARG:HD3	2.00	0.44
1:A:383:GLU:OE2	1:A:510:ARG:NH1	2.51	0.44
1:A:394:LEU:HD12	1:A:394:LEU:HA	1.91	0.43
1:A:593:PRO:HD2	1:A:627:LEU:CD1	2.49	0.43
1:A:847:MET:HE2	1:A:847:MET:HA	2.01	0.43
1:A:82:SER:HB2	1:A:232:ASP:HB2	2.01	0.42
1:A:34:THR:HG22	1:A:269:HIS:HB2	2.02	0.42
1:A:119:PHE:HB2	1:A:466:SER:HB3	2.02	0.42
1:A:847:MET:HA	1:A:847:MET:CE	2.50	0.42
1:A:197:VAL:HG12	1:A:216:LEU:HD11	2.02	0.41
1:A:338:GLY:O	1:A:342:MET:N	2.54	0.41
1:A:438:LEU:O	1:A:442:ILE:HG23	2.21	0.41
1:A:753:MET:SD	1:A:768:PHE:CE1	3.14	0.41
1:A:71:LEU:HD12	1:A:71:LEU:HA	1.84	0.41
1:A:100:PHE:O	1:A:101:PRO:C	2.59	0.41

Continued on next page...

Continued from previous page...

Atom-1	Atom-2	Interatomic distance (Å)	Clash overlap (Å)
1:A:560:LEU:HD12	1:A:591:PHE:CE2	2.54	0.41
1:A:639:PHE:CZ	1:A:846:PRO:HG3	2.56	0.41
1:A:645:ALA:HB3	1:A:785:LEU:HB2	2.02	0.41
1:A:691:LEU:HD22	1:A:736:PHE:CG	2.56	0.41
1:A:442:ILE:HG13	1:A:443:PHE:N	2.35	0.40
1:A:659:TRP:NE1	1:A:830:HIS:HD2	2.20	0.40
1:A:636:LEU:HG	1:A:841:SER:HA	2.03	0.40
1:A:745:LYS:O	1:A:780:PHE:HA	2.21	0.40

There are no symmetry-related clashes.

5.3 Torsion angles [i](#)

5.3.1 Protein backbone [i](#)

In the following table, the Percentiles column shows the percent Ramachandran outliers of the chain as a percentile score with respect to all PDB entries followed by that with respect to all EM entries.

The Analysed column shows the number of residues for which the backbone conformation was analysed, and the total number of residues.

Mol	Chain	Analysed	Favoured	Allowed	Outliers	Percentiles
1	A	824/867 (95%)	789 (96%)	33 (4%)	2 (0%)	47 73

All (2) Ramachandran outliers are listed below:

Mol	Chain	Res	Type
1	A	709	PHE
1	A	462	ALA

5.3.2 Protein sidechains [i](#)

In the following table, the Percentiles column shows the percent sidechain outliers of the chain as a percentile score with respect to all PDB entries followed by that with respect to all EM entries.

The Analysed column shows the number of residues for which the sidechain conformation was analysed, and the total number of residues.

Mol	Chain	Analysed	Rotameric	Outliers	Percentiles
1	A	647/679 (95%)	613 (95%)	34 (5%)	22 48

All (34) residues with a non-rotameric sidechain are listed below:

Mol	Chain	Res	Type
1	A	46	MET
1	A	51	GLU
1	A	82	SER
1	A	105	LEU
1	A	130	ARG
1	A	166	ILE
1	A	215	ARG
1	A	219	SER
1	A	222	TRP
1	A	232	ASP
1	A	278	GLU
1	A	315	LEU
1	A	363	THR
1	A	367	ASP
1	A	433	VAL
1	A	440	PHE
1	A	442	ILE
1	A	460	ASN
1	A	461	GLN
1	A	463	MET
1	A	501	PHE
1	A	515	ILE
1	A	534	ARG
1	A	541	GLU
1	A	582	ARG
1	A	602	GLU
1	A	627	LEU
1	A	665	THR
1	A	764	MET
1	A	802	TRP
1	A	804	ARG
1	A	841	SER
1	A	847	MET
1	A	866	ARG

Sometimes sidechains can be flipped to improve hydrogen bonding and reduce clashes. All (3) such sidechains are listed below:

Mol	Chain	Res	Type
1	A	89	ASN
1	A	782	HIS
1	A	830	HIS

5.3.3 RNA [i](#)

There are no RNA molecules in this entry.

5.4 Non-standard residues in protein, DNA, RNA chains [i](#)

There are no non-standard protein/DNA/RNA residues in this entry.

5.5 Carbohydrates [i](#)

There are no monosaccharides in this entry.

5.6 Ligand geometry [i](#)

2 ligands are modelled in this entry.

In the following table, the Counts columns list the number of bonds (or angles) for which Mogul statistics could be retrieved, the number of bonds (or angles) that are observed in the model and the number of bonds (or angles) that are defined in the Chemical Component Dictionary. The Link column lists molecule types, if any, to which the group is linked. The Z score for a bond length (or angle) is the number of standard deviations the observed value is removed from the expected value. A bond length (or angle) with $|Z| > 2$ is considered an outlier worth inspection. RMSZ is the root-mean-square of all Z scores of the bond lengths (or angles).

Mol	Type	Chain	Res	Link	Bond lengths			Bond angles		
					Counts	RMSZ	# Z > 2	Counts	RMSZ	# Z > 2
3	1K1	A	902	-	59,59,59	0.33	0	63,67,67	0.76	3 (4%)
2	PGW	A	901	-	50,50,50	0.32	0	53,56,56	0.45	0

In the following table, the Chirals column lists the number of chiral outliers, the number of chiral centers analysed, the number of these observed in the model and the number defined in the Chemical Component Dictionary. Similar counts are reported in the Torsion and Rings columns. '-' means no outliers of that kind were identified.

Mol	Type	Chain	Res	Link	Chirals	Torsions	Rings
3	1K1	A	902	-	-	32/67/67/67	-
2	PGW	A	901	-	-	35/55/55/55	-

There are no bond length outliers.

All (3) bond angle outliers are listed below:

Mol	Chain	Res	Type	Atoms	Z	Observed(°)	Ideal(°)
3	A	902	1K1	O6-P1-O4	-2.78	98.20	109.07
3	A	902	1K1	O10-C29-C30	2.15	116.13	111.50
3	A	902	1K1	O3-P1-O4	2.07	117.15	109.07

There are no chirality outliers.

All (67) torsion outliers are listed below:

Mol	Chain	Res	Type	Atoms
2	A	901	PGW	C03-O11-P-O13
2	A	901	PGW	C03-O11-P-O14
2	A	901	PGW	C04-O12-P-O11
2	A	901	PGW	C04-O12-P-O13
2	A	901	PGW	C2-C1-O01-C02
3	A	902	1K1	O6-C20-C21-C22
3	A	902	1K1	O9-C23-O8-C22
3	A	902	1K1	C24-C23-O8-C22
3	A	902	1K1	O11-C29-O10-C1
3	A	902	1K1	C30-C29-O10-C1
2	A	901	PGW	O04-C19-O03-C01
2	A	901	PGW	C20-C19-O03-C01
2	A	901	PGW	O02-C1-O01-C02
3	A	902	1K1	O2-C3-O1-C2
3	A	902	1K1	O6-C20-C21-O7
3	A	902	1K1	C4-C3-O1-C2
2	A	901	PGW	O12-C04-C05-CAD
2	A	901	PGW	O12-C04-C05-OAF
3	A	902	1K1	C29-C30-C31-C32
2	A	901	PGW	C03-O11-P-O12
3	A	902	1K1	C19-O3-P1-O6
2	A	901	PGW	C19-C20-C21-C22
3	A	902	1K1	C41-C42-C43-C44
3	A	902	1K1	C14-C15-C16-C17
2	A	901	PGW	C16-C15-C27-C26
3	A	902	1K1	C5-C6-C7-C8
3	A	902	1K1	C9-C10-C11-C12
2	A	901	PGW	C17-C18-C28-C30
2	A	901	PGW	C2-C3-C4-C5
2	A	901	PGW	C4-C5-C6-C7
2	A	901	PGW	C15-C16-C17-C18
2	A	901	PGW	C22-C23-C24-C25

Continued on next page...

Continued from previous page...

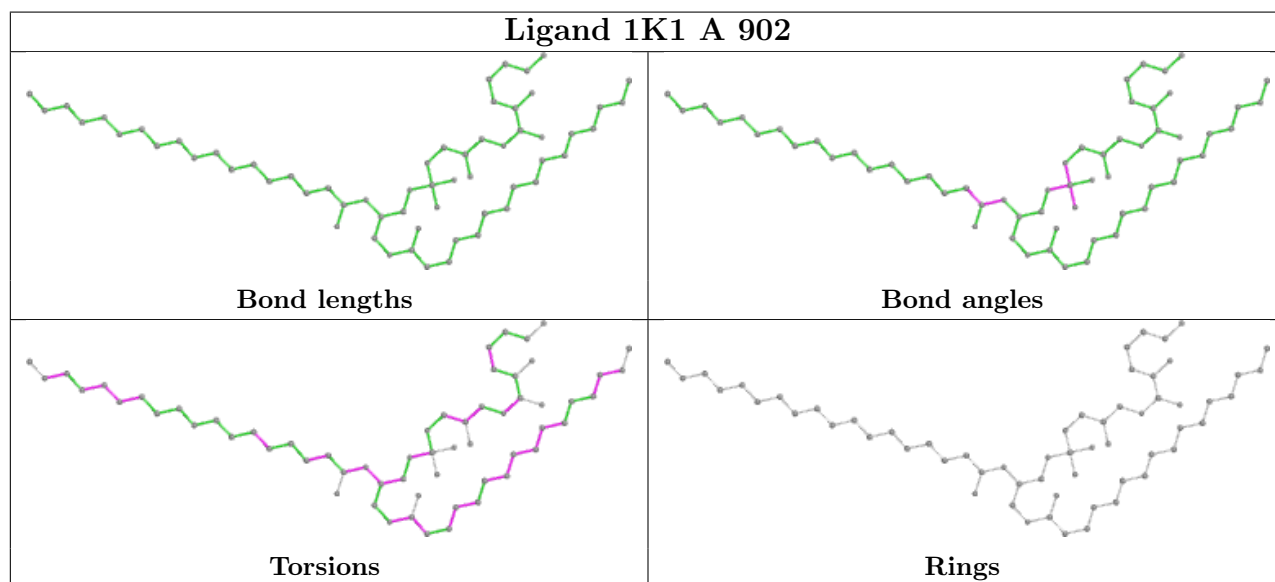
Mol	Chain	Res	Type	Atoms
2	A	901	PGW	C25-C26-C27-C15
2	A	901	PGW	C10-C06-C07-C08
3	A	902	1K1	C4-C5-C6-C7
3	A	902	1K1	C24-C25-C26-C27
3	A	902	1K1	C11-C12-C13-C14
2	A	901	PGW	C08-C09-C11-C12
3	A	902	1K1	C15-C16-C17-C18
2	A	901	PGW	C01-C02-C03-O11
3	A	902	1K1	C2-C1-C19-O3
2	A	901	PGW	C16-C17-C18-C28
2	A	901	PGW	C24-C25-C26-C27
2	A	901	PGW	C05-C04-O12-P
2	A	901	PGW	C5-C6-C7-C8
3	A	902	1K1	C2-C1-O10-C29
2	A	901	PGW	O03-C01-C02-O01
2	A	901	PGW	C07-C08-C09-C11
3	A	902	1K1	C11-C10-C9-C8
2	A	901	PGW	C04-O12-P-O14
3	A	902	1K1	C19-O3-P1-O4
3	A	902	1K1	O10-C1-C19-O3
2	A	901	PGW	O03-C01-C02-C03
2	A	901	PGW	C01-C02-O01-C1
3	A	902	1K1	C10-C11-C12-C13
3	A	902	1K1	C43-C44-C45-C46
3	A	902	1K1	C32-C33-C34-C35
2	A	901	PGW	C06-C07-C08-C09
3	A	902	1K1	C39-C40-C41-C42
3	A	902	1K1	C40-C41-C42-C43
2	A	901	PGW	O01-C02-C03-O11
3	A	902	1K1	C7-C8-C9-C10
2	A	901	PGW	C18-C28-C30-C29
3	A	902	1K1	O7-C21-C22-O8
3	A	902	1K1	O1-C3-C4-C5
3	A	902	1K1	O2-C3-C4-C5
2	A	901	PGW	C21-C22-C23-C24

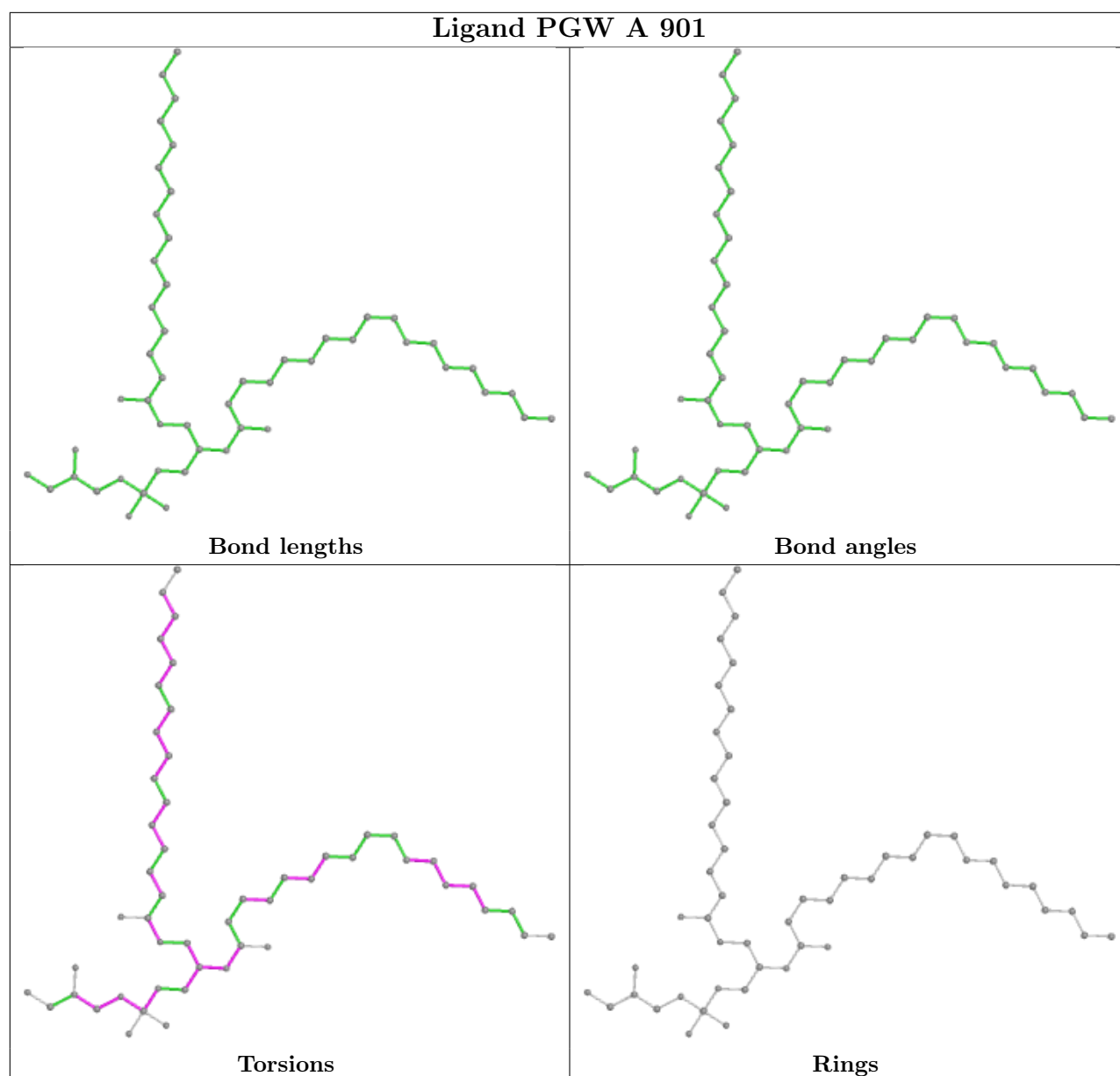
There are no ring outliers.

2 monomers are involved in 2 short contacts:

Mol	Chain	Res	Type	Clashes	Symm-Clashes
3	A	902	1K1	1	0
2	A	901	PGW	1	0

The following is a two-dimensional graphical depiction of Mogul quality analysis of bond lengths, bond angles, torsion angles, and ring geometry for all instances of the Ligand of Interest. In addition, ligands with molecular weight > 250 and outliers as shown on the validation Tables will also be included. For torsion angles, if less than 5% of the Mogul distribution of torsion angles is within 10 degrees of the torsion angle in question, then that torsion angle is considered an outlier. Any bond that is central to one or more torsion angles identified as an outlier by Mogul will be highlighted in the graph. For rings, the root-mean-square deviation (RMSD) between the ring in question and similar rings identified by Mogul is calculated over all ring torsion angles. If the average RMSD is greater than 60 degrees and the minimal RMSD between the ring in question and any Mogul-identified rings is also greater than 60 degrees, then that ring is considered an outlier. The outliers are highlighted in purple. The color gray indicates Mogul did not find sufficient equivalents in the CSD to analyse the geometry.





5.7 Other polymers [\(i\)](#)

There are no such residues in this entry.

5.8 Polymer linkage issues [\(i\)](#)

There are no chain breaks in this entry.

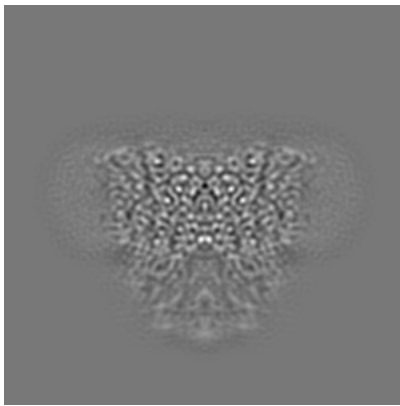
6 Map visualisation [i](#)

This section contains visualisations of the EMDB entry EMD-31445. These allow visual inspection of the internal detail of the map and identification of artifacts.

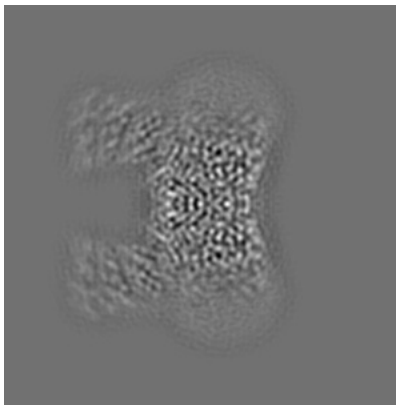
Images derived from a raw map, generated by summing the deposited half-maps, are presented below the corresponding image components of the primary map to allow further visual inspection and comparison with those of the primary map.

6.1 Orthogonal projections [i](#)

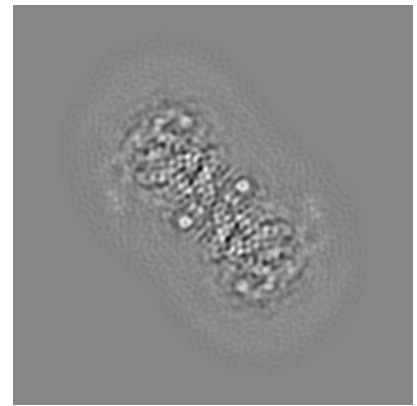
6.1.1 Primary map



X

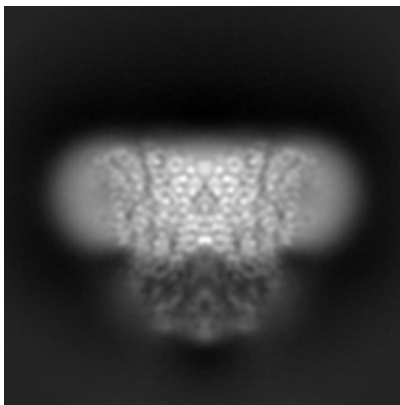


Y

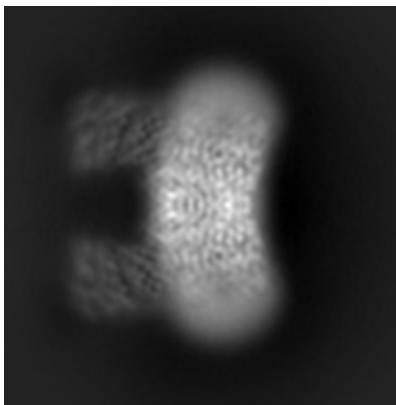


Z

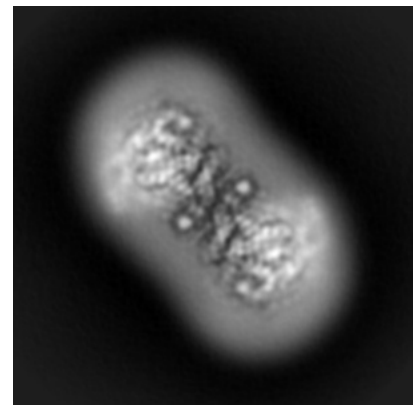
6.1.2 Raw map



X



Y

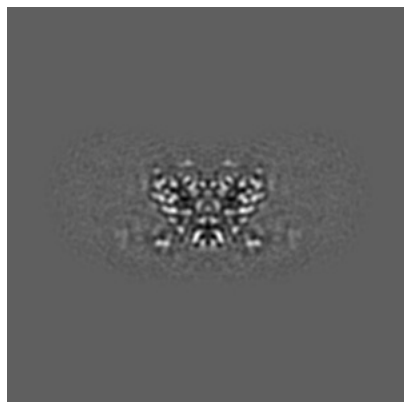


Z

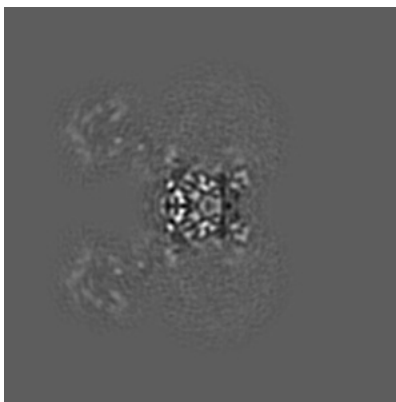
The images above show the map projected in three orthogonal directions.

6.2 Central slices [i](#)

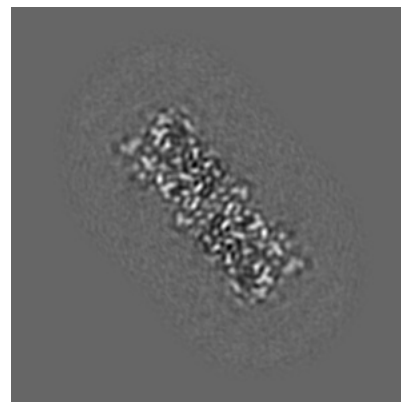
6.2.1 Primary map



X Index: 97

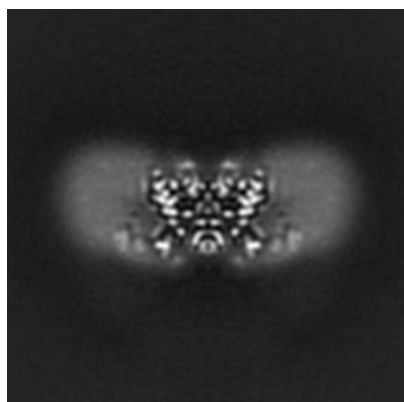


Y Index: 97

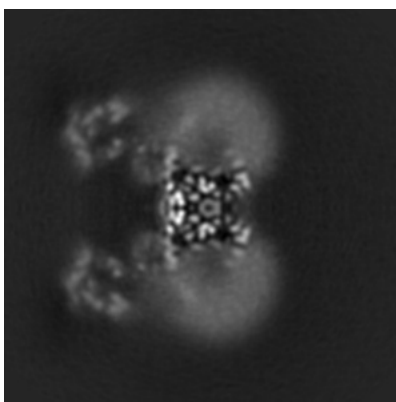


Z Index: 97

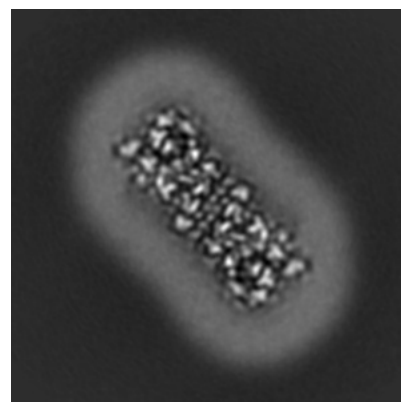
6.2.2 Raw map



X Index: 97



Y Index: 97

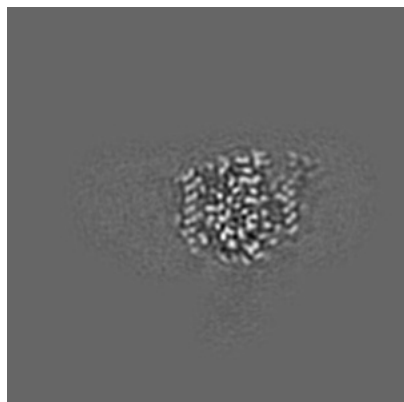


Z Index: 97

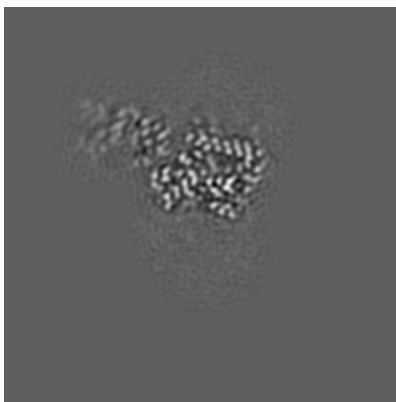
The images above show central slices of the map in three orthogonal directions.

6.3 Largest variance slices [i](#)

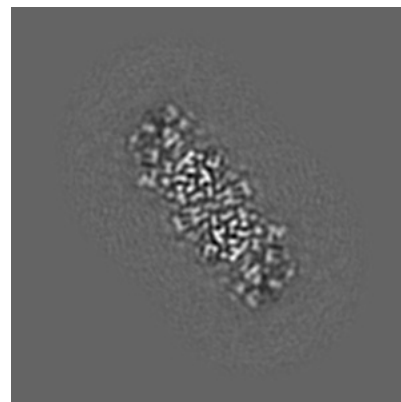
6.3.1 Primary map



X Index: 84

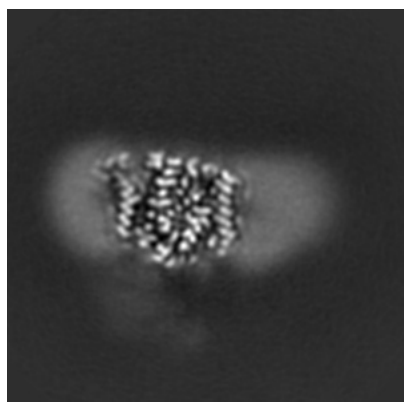


Y Index: 74

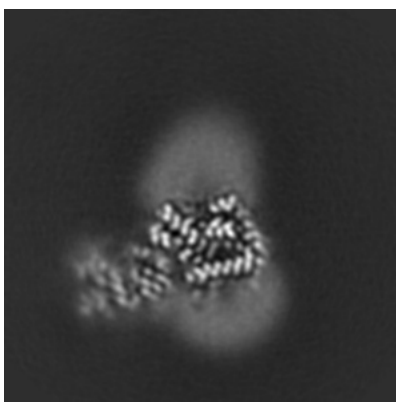


Z Index: 104

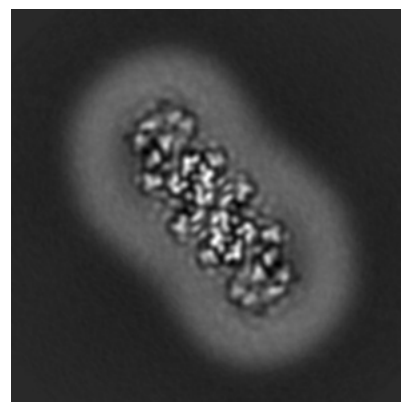
6.3.2 Raw map



X Index: 110



Y Index: 120

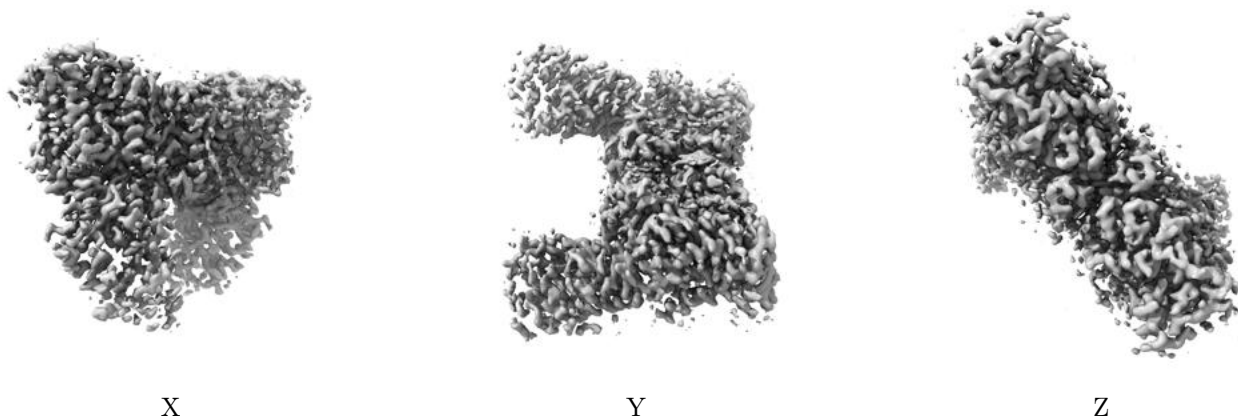


Z Index: 109

The images above show the largest variance slices of the map in three orthogonal directions.

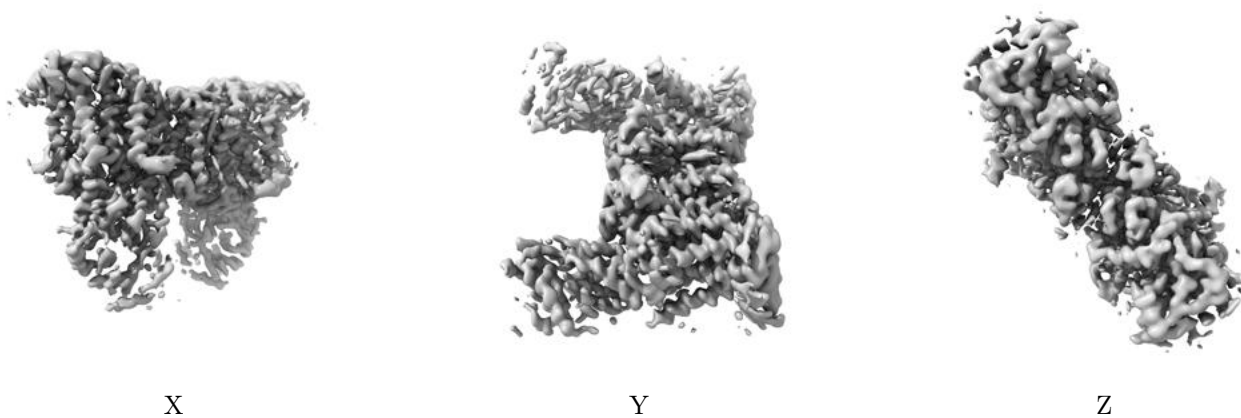
6.4 Orthogonal surface views [i](#)

6.4.1 Primary map



The images above show the 3D surface view of the map at the recommended contour level 0.000299. These images, in conjunction with the slice images, may facilitate assessment of whether an appropriate contour level has been provided.

6.4.2 Raw map



These images show the 3D surface of the raw map. The raw map's contour level was selected so that its surface encloses the same volume as the primary map does at its recommended contour level.

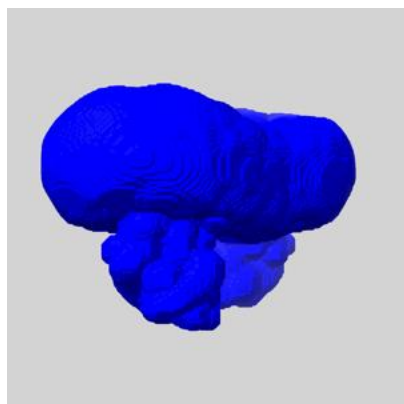
6.5 Mask visualisation [i](#)

This section shows the 3D surface view of the primary map at 50% transparency overlaid with the specified mask at 0% transparency

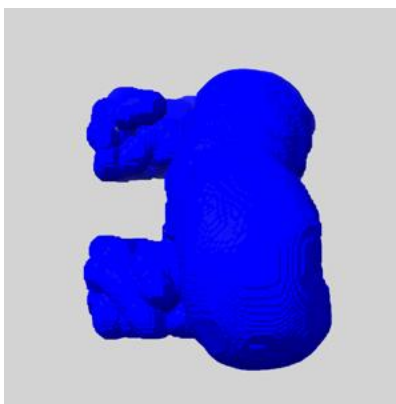
A mask typically either:

- Encompasses the whole structure
- Separates out a domain, a functional unit, a monomer or an area of interest from a larger structure

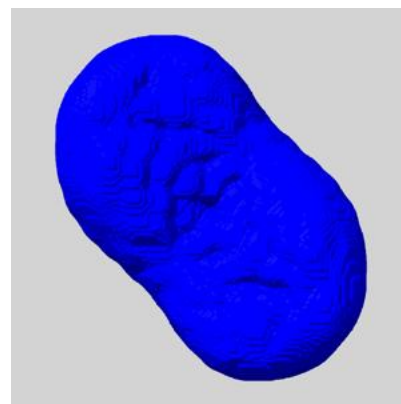
6.5.1 emd_31445_msk_1.map [i](#)



X



Y

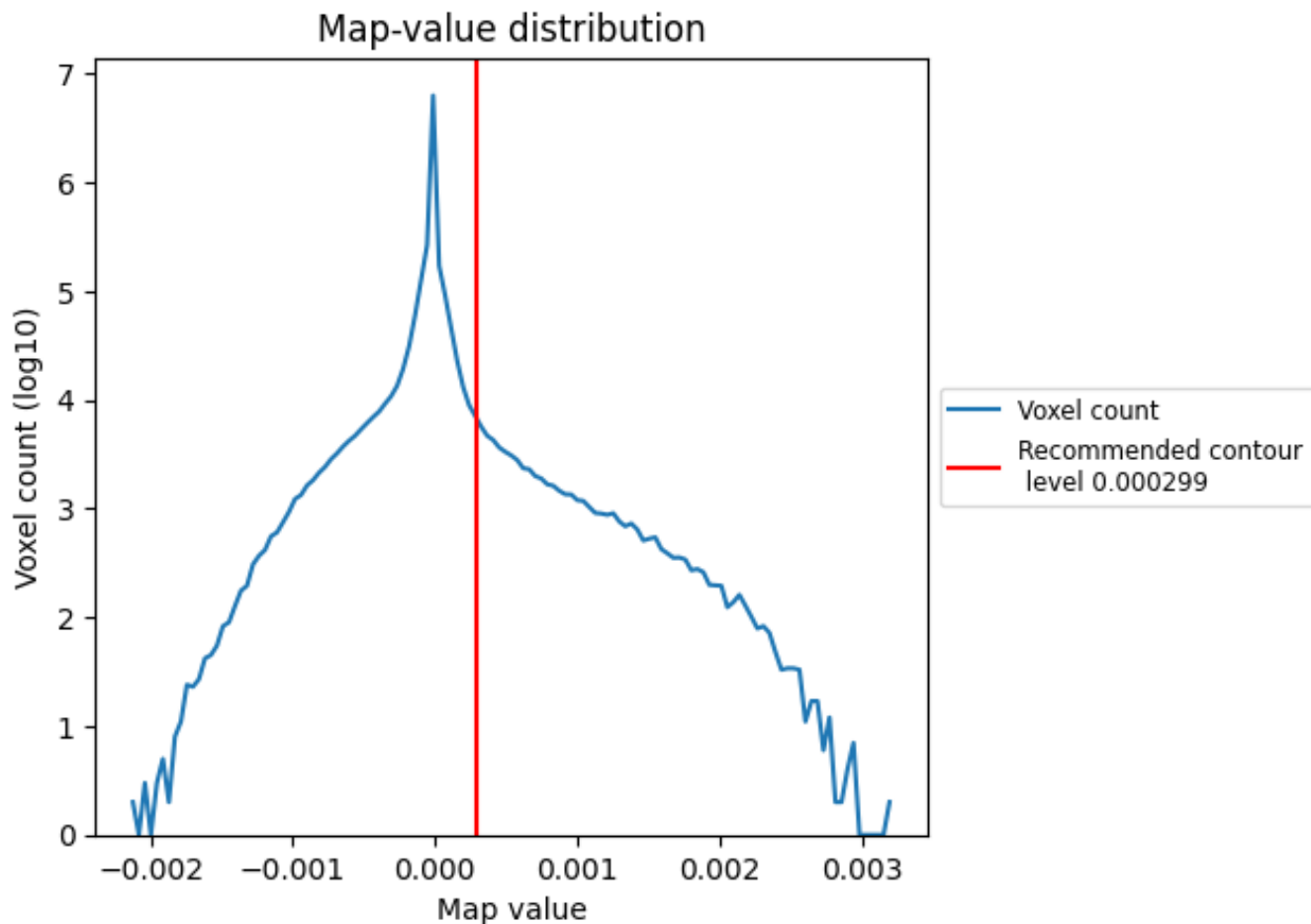


Z

7 Map analysis [i](#)

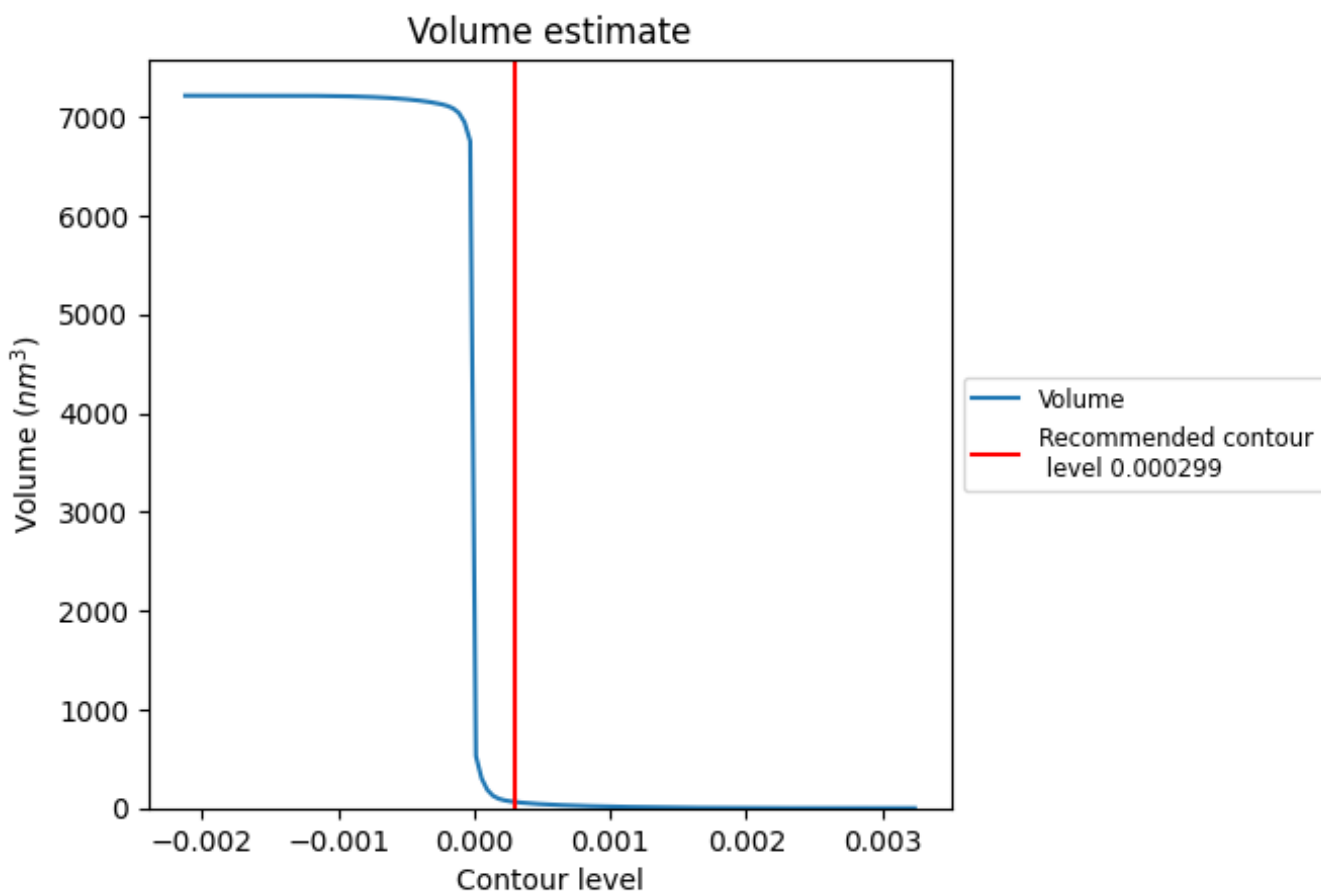
This section contains the results of statistical analysis of the map.

7.1 Map-value distribution [i](#)



The map-value distribution is plotted in 128 intervals along the x-axis. The y-axis is logarithmic. A spike in this graph at zero usually indicates that the volume has been masked.

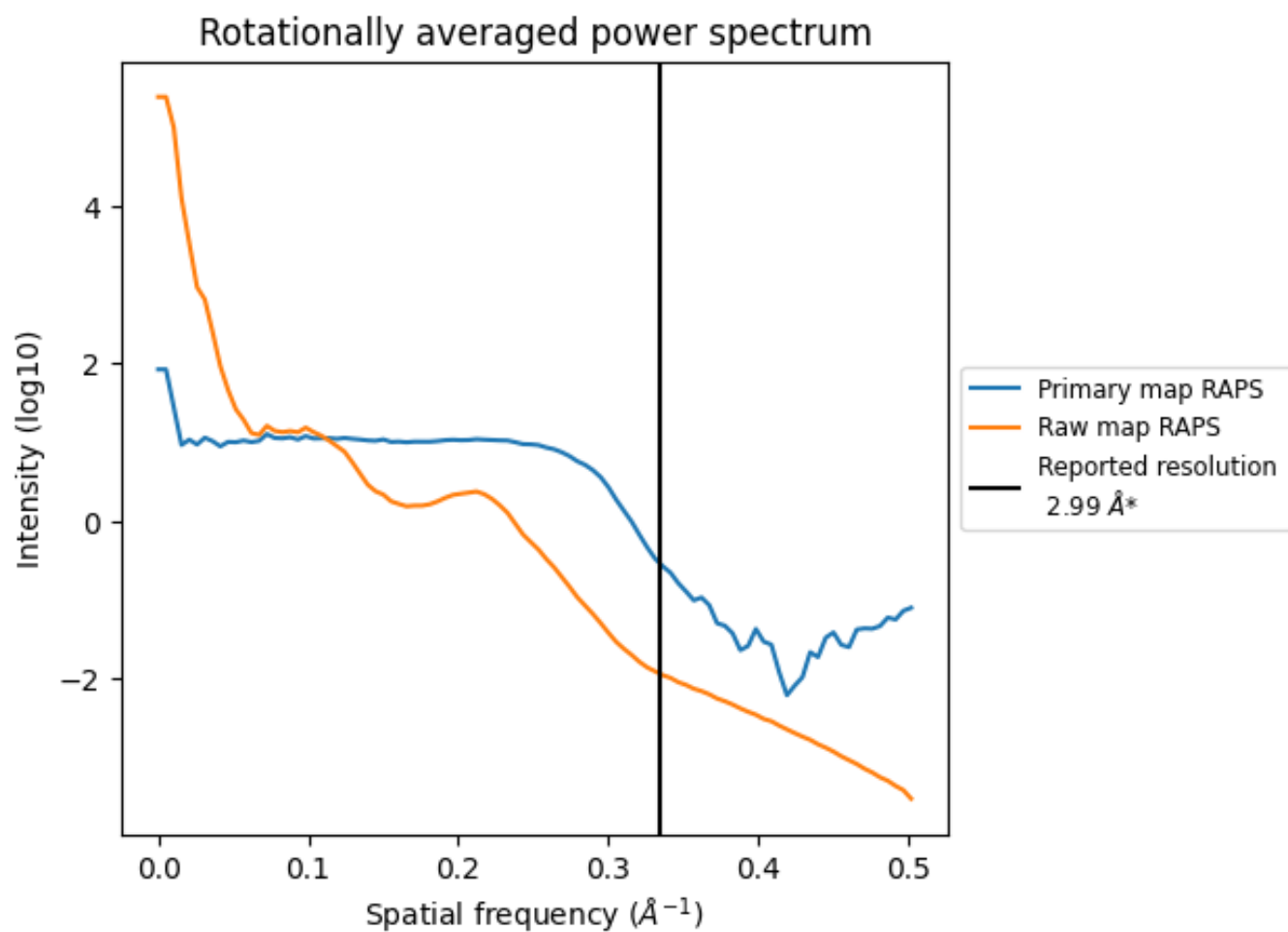
7.2 Volume estimate [i](#)



The volume at the recommended contour level is 63 nm^3 ; this corresponds to an approximate mass of 57 kDa.

The volume estimate graph shows how the enclosed volume varies with the contour level. The recommended contour level is shown as a vertical line and the intersection between the line and the curve gives the volume of the enclosed surface at the given level.

7.3 Rotationally averaged power spectrum [i](#)

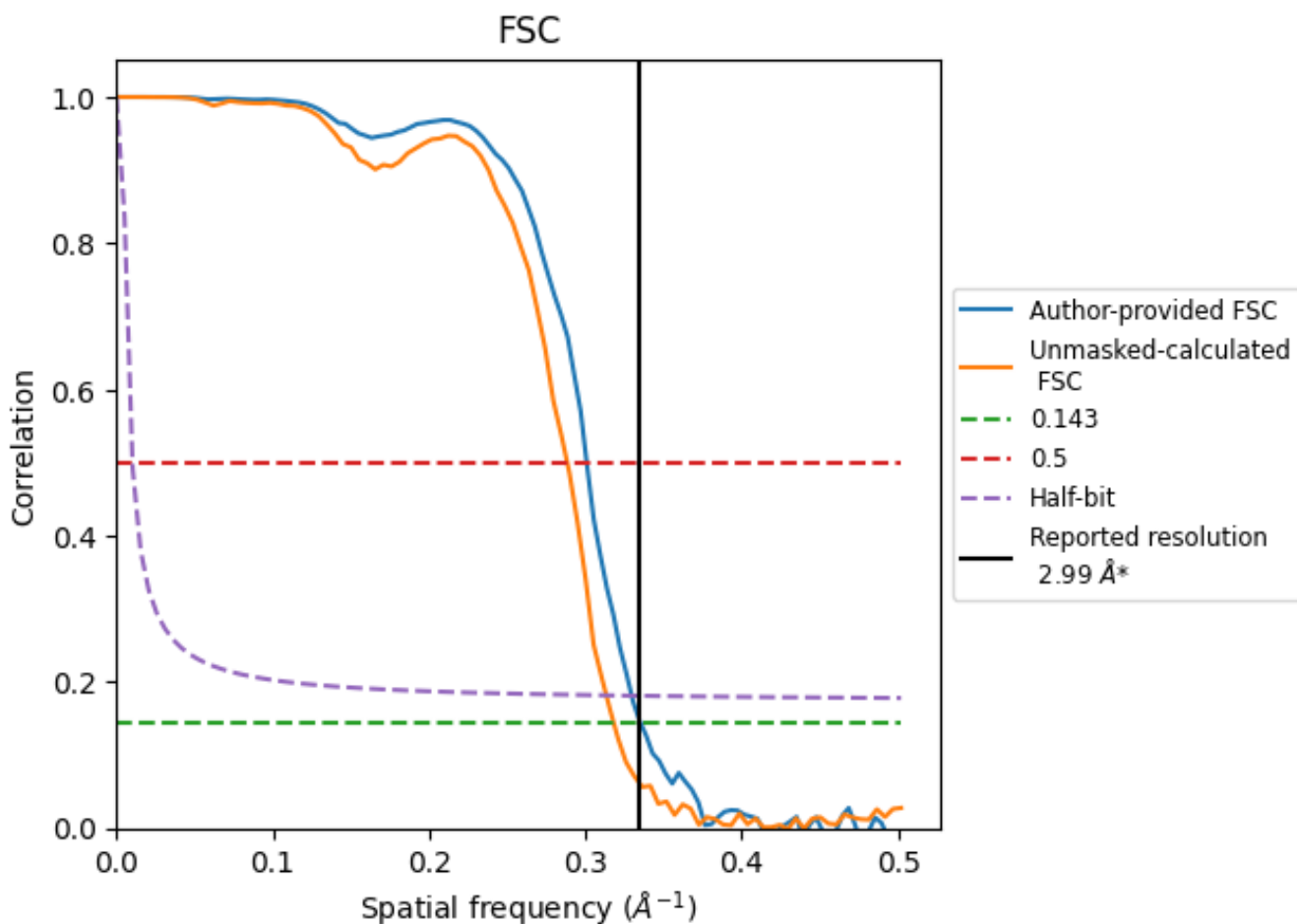


*Reported resolution corresponds to spatial frequency of 0.334 Å⁻¹

8 Fourier-Shell correlation [i](#)

Fourier-Shell Correlation (FSC) is the most commonly used method to estimate the resolution of single-particle and subtomogram-averaged maps. The shape of the curve depends on the imposed symmetry, mask and whether or not the two 3D reconstructions used were processed from a common reference. The reported resolution is shown as a black line. A curve is displayed for the half-bit criterion in addition to lines showing the 0.143 gold standard cut-off and 0.5 cut-off.

8.1 FSC [i](#)



*Reported resolution corresponds to spatial frequency of 0.334 Å⁻¹

8.2 Resolution estimates [i](#)

Resolution estimate (Å)	Estimation criterion (FSC cut-off)		
	0.143	0.5	Half-bit
Reported by author	2.99	-	-
Author-provided FSC curve	2.98	3.32	3.03
Unmasked-calculated*	3.14	3.47	3.19

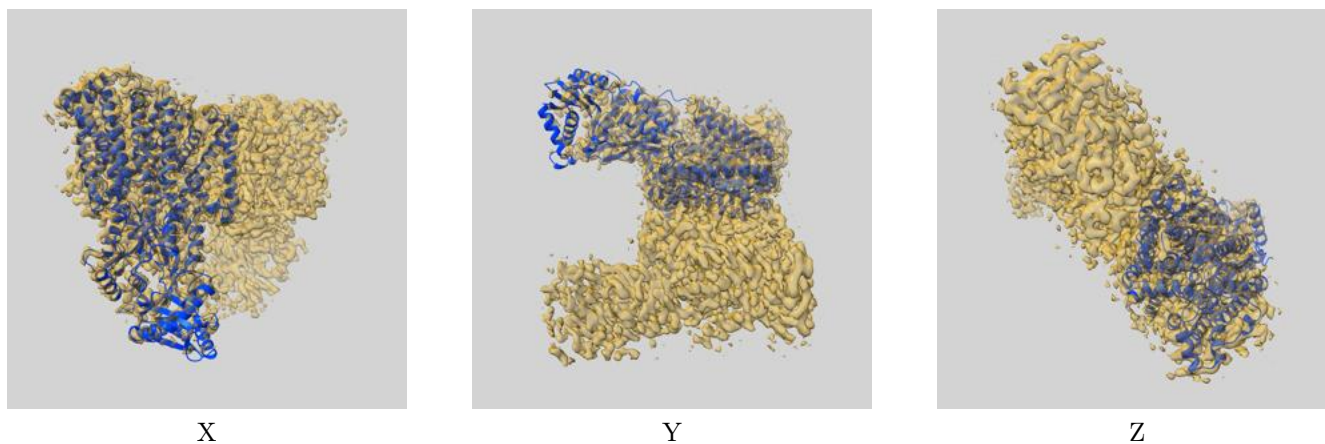
*Resolution estimate based on FSC curve calculated by comparison of deposited half-maps.

9 Map-model fit [i](#)

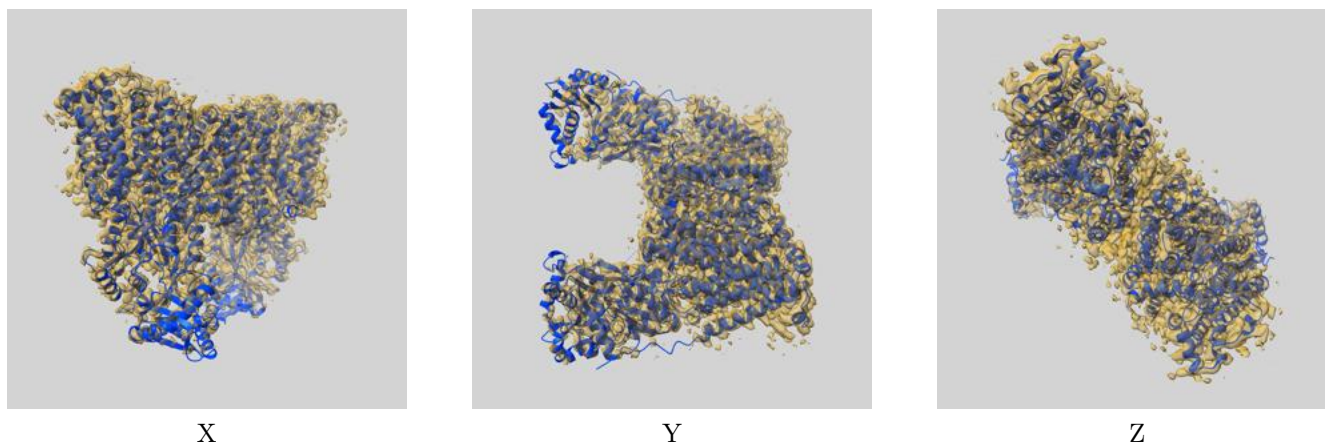
This section contains information regarding the fit between EMDB map EMD-31445 and PDB model 7F47. Per-residue inclusion information can be found in section 3 on page 5.

9.1 Map-model overlays

9.1.1 Map-model overlay [i](#)

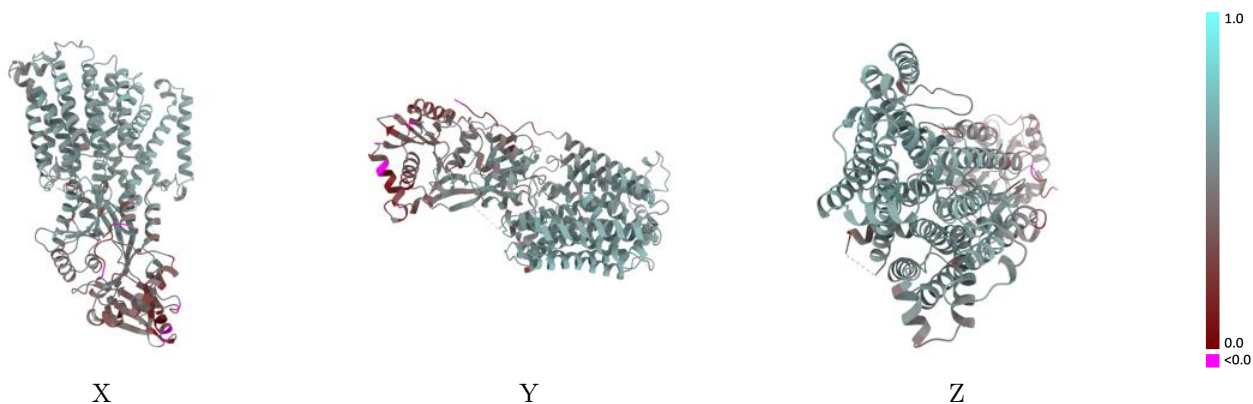


9.1.2 Map-model assembly overlay [i](#)



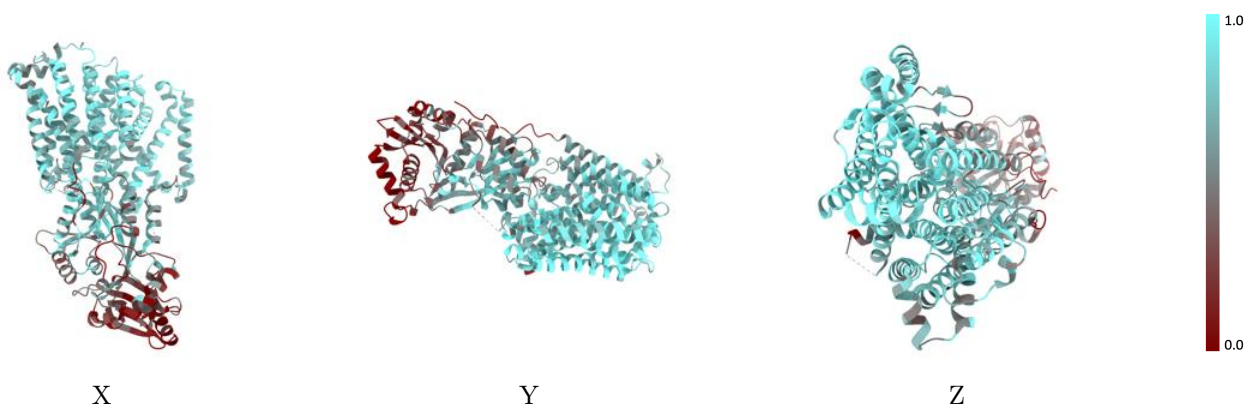
The images above show the 3D surface view of the map at the recommended contour level 0.000299 at 50% transparency in yellow overlaid with a ribbon representation of the model coloured in blue. These images allow for the visual assessment of the quality of fit between the atomic model and the map.

9.2 Q-score mapped to coordinate model [i](#)



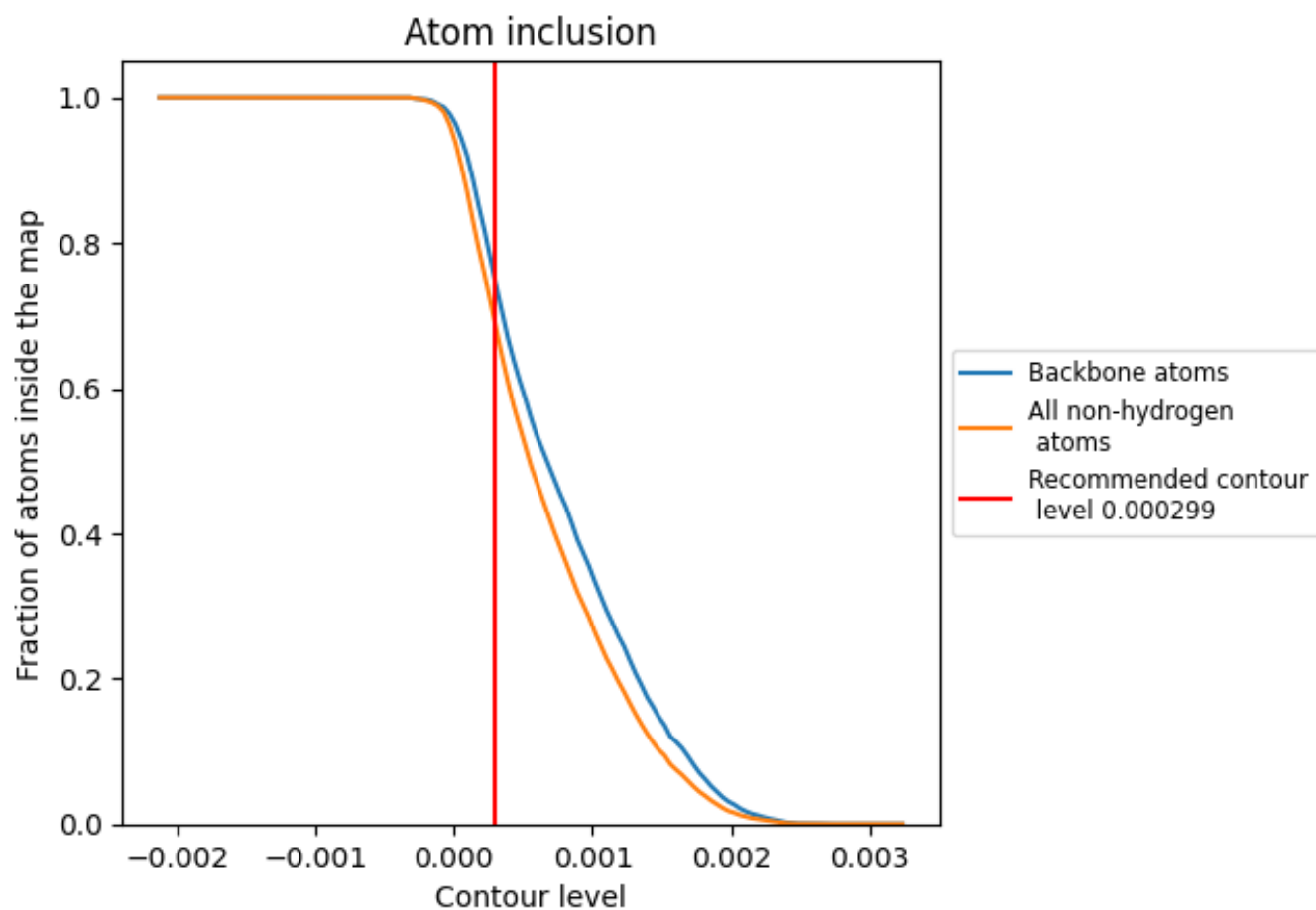
The images above show the model with each residue coloured according to its Q-score. This shows their resolvability in the map with higher Q-score values reflecting better resolvability. Please note: Q-score is calculating the resolvability of atoms, and thus high values are only expected at resolutions at which atoms can be resolved. Low Q-score values may therefore be expected for many entries.

9.3 Atom inclusion mapped to coordinate model [i](#)



The images above show the model with each residue coloured according to its atom inclusion. This shows to what extent they are inside the map at the recommended contour level (0.000299).





9.4 Atom inclusion [i](#)



At the recommended contour level, 75% of all backbone atoms, 69% of all non-hydrogen atoms, are inside the map.

9.5 Map-model fit summary [i](#)

The table lists the average atom inclusion at the recommended contour level (0.000299) and Q-score for the entire model and for each chain.

Chain	Atom inclusion	Q-score
All	 0.6863	 0.5160
A	 0.6863	 0.5160

