



# wwPDB X-ray Structure Validation Summary Report ⓘ

Nov 6, 2023 – 12:22 PM EST

PDB ID : 5EUD  
Title : S1P Lyase Bacterial Surrogate bound to N-(1-(4-(3-hydroxyprop-1-yn-1-yl)phenyl)-2-((4-methoxy-2,5-dimethylbenzyl)amino)ethyl)-5-methylisoxazole-3-carboxamide  
Authors : Argiriadi, M.A.; Banach, D.; Radziejewska, E.; Marchie, S.; DiMauro, J.; Dinges, J.; Dominguez, E.; Hutchins, C.; Judge, R.A.; Queeney, K.; Wallace, G.; Harris, C.M.  
Deposited on : 2015-11-18  
Resolution : 2.24 Å(reported)

This is a wwPDB X-ray Structure Validation Summary Report for a publicly released PDB entry.

We welcome your comments at [validation@mail.wwpdb.org](mailto:validation@mail.wwpdb.org)

A user guide is available at

<https://www.wwpdb.org/validation/2017/XrayValidationReportHelp>

with specific help available everywhere you see the ⓘ symbol.

The types of validation reports are described at

<http://www.wwpdb.org/validation/2017/FAQs#types>.

---

The following versions of software and data (see [references ⓘ](#)) were used in the production of this report:

MolProbity : 4.02b-467  
Mogul : 1.8.5 (274361), CSD as541be (2020)  
Xtriage (Phenix) : 1.13  
EDS : 2.36  
buster-report : 1.1.7 (2018)  
Percentile statistics : 20191225.v01 (using entries in the PDB archive December 25th 2019)  
Refmac : 5.8.0158  
CCP4 : 7.0.044 (Gargrove)  
Ideal geometry (proteins) : Engh & Huber (2001)

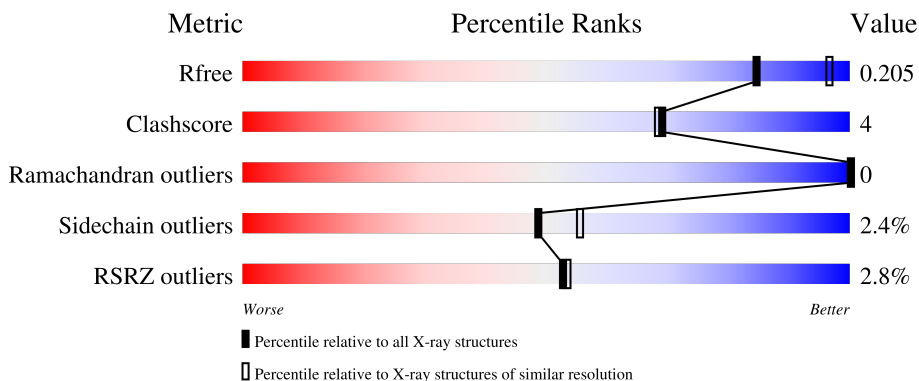
# 1 Overall quality at a glance

The following experimental techniques were used to determine the structure:

*X-RAY DIFFRACTION*

The reported resolution of this entry is 2.24 Å.

Percentile scores (ranging between 0-100) for global validation metrics of the entry are shown in the following graphic. The table shows the number of entries on which the scores are based.



Metric	Whole archive (#Entries)	Similar resolution (#Entries, resolution range(Å))
$R_{free}$	130704	2391 (2.26-2.22)
Clashscore	141614	2539 (2.26-2.22)
Ramachandran outliers	138981	2489 (2.26-2.22)
Sidechain outliers	138945	2490 (2.26-2.22)
RSRZ outliers	127900	2353 (2.26-2.22)

The table below summarises the geometric issues observed across the polymeric chains and their fit to the electron density. The red, orange, yellow and green segments of the lower bar indicate the fraction of residues that contain outliers for  $\geq 3$ , 2, 1 and 0 types of geometric quality criteria respectively. A grey segment represents the fraction of residues that are not modelled. The numeric value for each fraction is indicated below the corresponding segment, with a dot representing fractions  $\leq 5\%$ . The upper red bar (where present) indicates the fraction of residues that have poor fit to the electron density. The numeric value is given above the bar.

Mol	Chain	Length	Quality of chain
1	A	514	 3% 81% 7% 9%
1	B	514	 2% 79% 8% 11%

Ideal geometry (DNA, RNA) : Parkinson et al. (1996)  
 Validation Pipeline (wwPDB-VP) : 2.36

## 2 Entry composition

There are 4 unique types of molecules in this entry. The entry contains 7353 atoms, of which 0 are hydrogens and 0 are deuteriums.

In the tables below, the ZeroOcc column contains the number of atoms modelled with zero occupancy, the AltConf column contains the number of residues with at least one atom in alternate conformation and the Trace column contains the number of residues modelled with at most 2 atoms.

- Molecule 1 is a protein called Putative sphingosine-1-phosphate lyase.

Mol	Chain	Residues	Atoms						ZeroOcc	AltConf	Trace
			Total	C	N	O	P	S			
1	A	454	Total	C	N	O	P	S	0	0	0
			3448	2201	604	629	1	13			
1	B	449	Total	C	N	O	P	S	0	0	0
			3406	2175	595	622	1	13			

There are 24 discrepancies between the modelled and reference sequences:

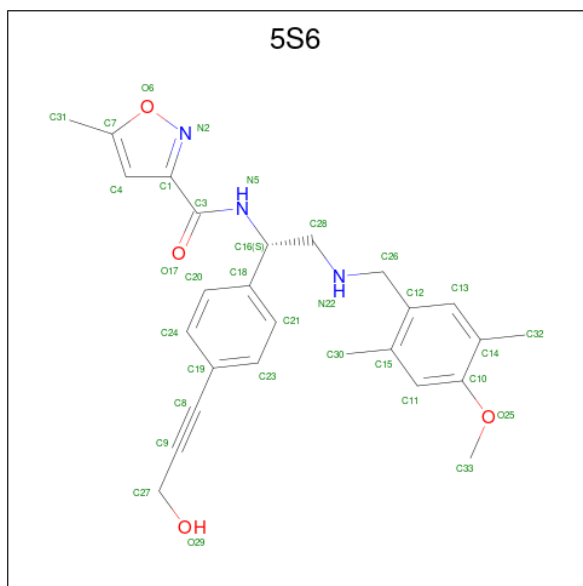
Chain	Residue	Modelled	Actual	Comment	Reference
A	0	MET	-	initiating methionine	UNP Q67PY4
A	1	PRO	-	expression tag	UNP Q67PY4
A	249	PHE	TYR	engineered mutation	UNP Q67PY4
A	344	ILE	LEU	engineered mutation	UNP Q67PY4
A	346	ALA	PHE	engineered mutation	UNP Q67PY4
A	497	SER	LEU	engineered mutation	UNP Q67PY4
A	508	HIS	-	expression tag	UNP Q67PY4
A	509	HIS	-	expression tag	UNP Q67PY4
A	510	HIS	-	expression tag	UNP Q67PY4
A	511	HIS	-	expression tag	UNP Q67PY4
A	512	HIS	-	expression tag	UNP Q67PY4
A	513	HIS	-	expression tag	UNP Q67PY4
B	0	MET	-	initiating methionine	UNP Q67PY4
B	1	PRO	-	expression tag	UNP Q67PY4
B	249	PHE	TYR	engineered mutation	UNP Q67PY4
B	344	ILE	LEU	engineered mutation	UNP Q67PY4
B	346	ALA	PHE	engineered mutation	UNP Q67PY4
B	497	SER	LEU	engineered mutation	UNP Q67PY4
B	508	HIS	-	expression tag	UNP Q67PY4
B	509	HIS	-	expression tag	UNP Q67PY4
B	510	HIS	-	expression tag	UNP Q67PY4
B	511	HIS	-	expression tag	UNP Q67PY4
B	512	HIS	-	expression tag	UNP Q67PY4
B	513	HIS	-	expression tag	UNP Q67PY4

- Molecule 2 is PHOSPHATE ION (three-letter code: PO4) (formula: O<sub>4</sub>P).



Mol	Chain	Residues	Atoms			ZeroOcc	AltConf
2	A	1	Total	O	P	0	0
			5	4	1		
2	B	1	Total	O	P	0	0
			5	4	1		

- Molecule 3 is {N}-[(1 {S})-2-[(4-methoxy-2,5-dimethyl-phenyl)methylamino]-1-[4-(3-oxidanylprop-1-ynyl)phenyl]ethyl]-5-methyl-1,2-oxazole-3-carboxamide (three-letter code: 5S6) (formula: C<sub>26</sub>H<sub>29</sub>N<sub>3</sub>O<sub>4</sub>).



Mol	Chain	Residues	Atoms				ZeroOcc	AltConf
3	A	1	Total	C	N	O	0	0
			33	26	3	4		
3	A	1	Total	C	N	O	0	0
			33	26	3	4		

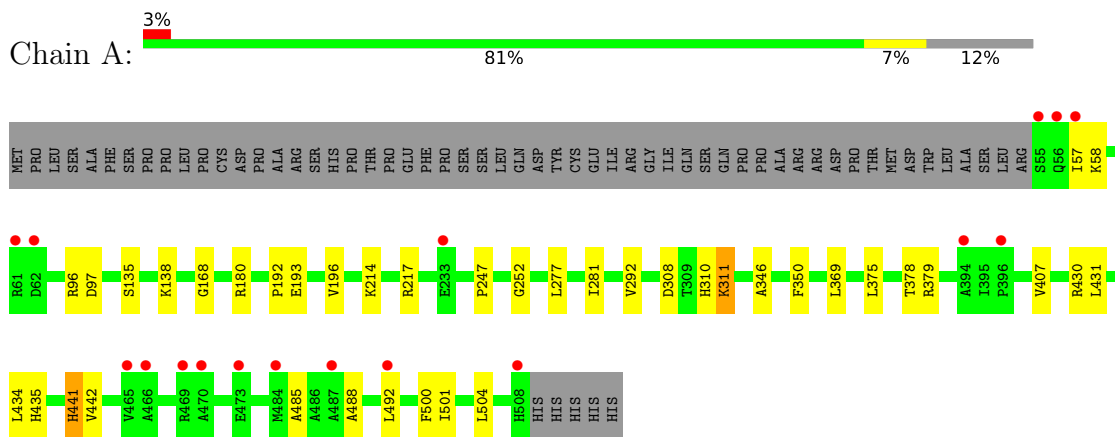
- Molecule 4 is water.

Mol	Chain	Residues	Atoms		ZeroOcc	AltConf
4	A	221	Total	O	0	0
			221	221		
4	B	202	Total	O	0	0
			202	202		

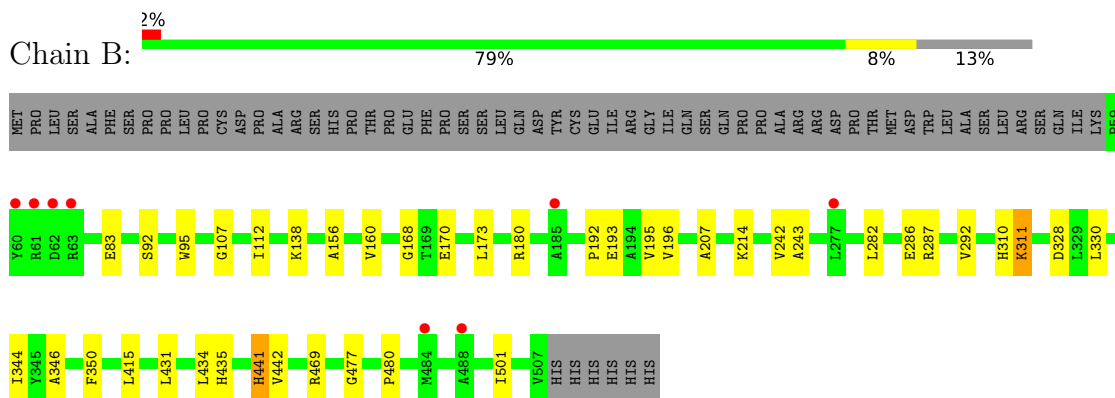
### 3 Residue-property plots [i](#)

These plots are drawn for all protein, RNA, DNA and oligosaccharide chains in the entry. The first graphic for a chain summarises the proportions of the various outlier classes displayed in the second graphic. The second graphic shows the sequence view annotated by issues in geometry and electron density. Residues are color-coded according to the number of geometric quality criteria for which they contain at least one outlier: green = 0, yellow = 1, orange = 2 and red = 3 or more. A red dot above a residue indicates a poor fit to the electron density ( $RSRZ > 2$ ). Stretches of 2 or more consecutive residues without any outlier are shown as a green connector. Residues present in the sample, but not in the model, are shown in grey.

- Molecule 1: Putative sphingosine-1-phosphate lyase



- Molecule 1: Putative sphingosine-1-phosphate lyase



## 4 Data and refinement statistics

Property	Value	Source
Space group	P 21 21 21	Depositor
Cell constants a, b, c, $\alpha$ , $\beta$ , $\gamma$	83.94Å 85.13Å 129.51Å 90.00° 90.00° 90.00°	Depositor
Resolution (Å)	32.75 – 2.24 32.75 – 2.24	Depositor EDS
% Data completeness (in resolution range)	99.9 (32.75-2.24) 99.9 (32.75-2.24)	Depositor EDS
$R_{merge}$	(Not available)	Depositor
$R_{sym}$	0.14	Depositor
$\langle I/\sigma(I) \rangle$ <sup>1</sup>	2.53 (at 2.24Å)	Xtrriage
Refinement program	BUSTER 2.11.5	Depositor
R, $R_{free}$	0.162 , 0.206 0.164 , 0.205	Depositor DCC
$R_{free}$ test set	2282 reflections (5.04%)	wwPDB-VP
Wilson B-factor (Å <sup>2</sup> )	31.7	Xtrriage
Anisotropy	0.077	Xtrriage
Bulk solvent $k_{sol}$ (e/Å <sup>3</sup> ), $B_{sol}$ (Å <sup>2</sup> )	0.35 , 50.4	EDS
L-test for twinning <sup>2</sup>	$\langle  L  \rangle = 0.48$ , $\langle L^2 \rangle = 0.31$	Xtrriage
Estimated twinning fraction	0.021 for k,h,-l	Xtrriage
$F_o, F_c$ correlation	0.96	EDS
Total number of atoms	7353	wwPDB-VP
Average B, all atoms (Å <sup>2</sup> )	36.0	wwPDB-VP

Xtrriage's analysis on translational NCS is as follows: *The largest off-origin peak in the Patterson function is 3.40% of the height of the origin peak. No significant pseudotranslation is detected.*

<sup>1</sup>Intensities estimated from amplitudes.

<sup>2</sup>Theoretical values of  $\langle |L| \rangle$ ,  $\langle L^2 \rangle$  for acentric reflections are 0.5, 0.333 respectively for untwinned datasets, and 0.375, 0.2 for perfectly twinned datasets.

## 5 Model quality

### 5.1 Standard geometry

Bond lengths and bond angles in the following residue types are not validated in this section: LLP, PO4, 5S6

The Z score for a bond length (or angle) is the number of standard deviations the observed value is removed from the expected value. A bond length (or angle) with  $|Z| > 5$  is considered an outlier worth inspection. RMSZ is the root-mean-square of all Z scores of the bond lengths (or angles).

Mol	Chain	Bond lengths		Bond angles	
		RMSZ	# Z  >5	RMSZ	# Z  >5
1	A	0.52	0/3520	0.66	0/4808
1	B	0.51	0/3477	0.65	0/4750
All	All	0.52	0/6997	0.65	0/9558

There are no bond length outliers.

There are no bond angle outliers.

There are no chirality outliers.

There are no planarity outliers.

### 5.2 Too-close contacts

In the following table, the Non-H and H(model) columns list the number of non-hydrogen atoms and hydrogen atoms in the chain respectively. The H(added) column lists the number of hydrogen atoms added and optimized by MolProbity. The Clashes column lists the number of clashes within the asymmetric unit, whereas Symm-Clashes lists symmetry-related clashes.

Mol	Chain	Non-H	H(model)	H(added)	Clashes	Symm-Clashes
1	A	3448	0	3376	26	0
1	B	3406	0	3333	28	0
2	A	5	0	0	0	0
2	B	5	0	0	0	0
3	A	66	0	0	0	0
4	A	221	0	0	1	0
4	B	202	0	0	0	0
All	All	7353	0	6709	50	0

The all-atom clashscore is defined as the number of clashes found per 1000 atoms (including hydrogen atoms). The all-atom clashscore for this structure is 4.



The worst 5 of 50 close contacts within the same asymmetric unit are listed below, sorted by their clash magnitude.

Atom-1	Atom-2	Interatomic distance (Å)	Clash overlap (Å)
1:B:282:LEU:HD22	1:B:292:VAL:HG21	1.54	0.89
1:B:168:GLY:HA3	1:B:311:LLP:H5'2	1.62	0.82
1:A:168:GLY:HA3	1:A:311:LLP:H5'2	1.64	0.79
1:B:286:GLU:CG	1:B:292:VAL:CG1	2.64	0.76
1:B:286:GLU:HG3	1:B:292:VAL:HG11	1.70	0.72

There are no symmetry-related clashes.

## 5.3 Torsion angles [i](#)

### 5.3.1 Protein backbone [i](#)

In the following table, the Percentiles column shows the percent Ramachandran outliers of the chain as a percentile score with respect to all X-ray entries followed by that with respect to entries of similar resolution.

The Analysed column shows the number of residues for which the backbone conformation was analysed, and the total number of residues.

Mol	Chain	Analysed	Favoured	Allowed	Outliers	Percentiles	
1	A	451/514 (88%)	441 (98%)	10 (2%)	0	100	100
1	B	446/514 (87%)	437 (98%)	9 (2%)	0	100	100
All	All	897/1028 (87%)	878 (98%)	19 (2%)	0	100	100

There are no Ramachandran outliers to report.

### 5.3.2 Protein sidechains [i](#)

In the following table, the Percentiles column shows the percent sidechain outliers of the chain as a percentile score with respect to all X-ray entries followed by that with respect to entries of similar resolution.

The Analysed column shows the number of residues for which the sidechain conformation was analysed, and the total number of residues.

Mol	Chain	Analysed	Rotameric	Outliers	Percentiles	
1	A	339/394 (86%)	330 (97%)	9 (3%)	44	51

*Continued on next page...*

Continued from previous page...

Mol	Chain	Analysed	Rotameric	Outliers	Percentiles	
1	B	334/394 (85%)	327 (98%)	7 (2%)	53	60
All	All	673/788 (85%)	657 (98%)	16 (2%)	49	55

5 of 16 residues with a non-rotameric sidechain are listed below:

Mol	Chain	Res	Type
1	B	435	HIS
1	B	328	ASP
1	A	441	HIS
1	B	310	HIS
1	A	435	HIS

Sometimes sidechains can be flipped to improve hydrogen bonding and reduce clashes. There are no such sidechains identified.

### 5.3.3 RNA [i](#)

There are no RNA molecules in this entry.

## 5.4 Non-standard residues in protein, DNA, RNA chains [i](#)

2 non-standard protein/DNA/RNA residues are modelled in this entry.

In the following table, the Counts columns list the number of bonds (or angles) for which Mogul statistics could be retrieved, the number of bonds (or angles) that are observed in the model and the number of bonds (or angles) that are defined in the Chemical Component Dictionary. The Link column lists molecule types, if any, to which the group is linked. The Z score for a bond length (or angle) is the number of standard deviations the observed value is removed from the expected value. A bond length (or angle) with  $|Z| > 2$  is considered an outlier worth inspection. RMSZ is the root-mean-square of all Z scores of the bond lengths (or angles).

Mol	Type	Chain	Res	Link	Bond lengths			Bond angles		
					Counts	RMSZ	# Z  > 2	Counts	RMSZ	# Z  > 2
1	LLP	B	311	1	23,24,25	1.96	6 (26%)	25,32,34	2.59	9 (36%)
1	LLP	A	311	1	23,24,25	2.27	6 (26%)	25,32,34	2.63	14 (56%)

In the following table, the Chirals column lists the number of chiral outliers, the number of chiral centers analysed, the number of these observed in the model and the number defined in the Chemical Component Dictionary. Similar counts are reported in the Torsion and Rings columns. '-' means no outliers of that kind were identified.

Mol	Type	Chain	Res	Link	Chirals	Torsions	Rings
1	LLP	B	311	1	-	3/16/17/19	0/1/1/1
1	LLP	A	311	1	-	6/16/17/19	0/1/1/1

The worst 5 of 12 bond length outliers are listed below:

Mol	Chain	Res	Type	Atoms	Z	Observed(Å)	Ideal(Å)
1	A	311	LLP	C4-C4'	6.24	1.58	1.46
1	B	311	LLP	C4'-NZ	5.94	1.47	1.27
1	A	311	LLP	C3-C2	5.01	1.45	1.40
1	A	311	LLP	C4'-NZ	4.86	1.43	1.27
1	B	311	LLP	C4-C4'	4.53	1.55	1.46

The worst 5 of 23 bond angle outliers are listed below:

Mol	Chain	Res	Type	Atoms	Z	Observed(°)	Ideal(°)
1	B	311	LLP	CE-NZ-C4'	-7.72	95.20	118.90
1	A	311	LLP	CE-NZ-C4'	-5.20	102.94	118.90
1	A	311	LLP	OP4-P-OP1	5.17	120.96	106.47
1	B	311	LLP	OP3-P-OP4	4.92	119.82	106.73
1	A	311	LLP	C5'-C5-C6	-4.12	112.59	119.37

There are no chirality outliers.

5 of 9 torsion outliers are listed below:

Mol	Chain	Res	Type	Atoms
1	A	311	LLP	C4-C4'-NZ-CE
1	A	311	LLP	O-C-CA-CB
1	B	311	LLP	C4-C4'-NZ-CE
1	B	311	LLP	O-C-CA-CB
1	B	311	LLP	CG-CD-CE-NZ

There are no ring outliers.

2 monomers are involved in 5 short contacts:

Mol	Chain	Res	Type	Clashes	Symm-Clashes
1	B	311	LLP	2	0
1	A	311	LLP	3	0

## 5.5 Carbohydrates [i](#)

There are no monosaccharides in this entry.

## 5.6 Ligand geometry

4 ligands are modelled in this entry.

In the following table, the Counts columns list the number of bonds (or angles) for which Mogul statistics could be retrieved, the number of bonds (or angles) that are observed in the model and the number of bonds (or angles) that are defined in the Chemical Component Dictionary. The Link column lists molecule types, if any, to which the group is linked. The Z score for a bond length (or angle) is the number of standard deviations the observed value is removed from the expected value. A bond length (or angle) with  $|Z| > 2$  is considered an outlier worth inspection. RMSZ is the root-mean-square of all Z scores of the bond lengths (or angles).

Mol	Type	Chain	Res	Link	Bond lengths			Bond angles		
					Counts	RMSZ	# Z  > 2	Counts	RMSZ	# Z  > 2
2	PO4	B	601	-	4,4,4	1.29	0	6,6,6	0.46	0
3	5S6	A	603	-	32,35,35	0.98	1 (3%)	38,47,47	1.40	5 (13%)
2	PO4	A	601	-	4,4,4	1.27	0	6,6,6	0.86	0
3	5S6	A	602	-	32,35,35	0.95	1 (3%)	38,47,47	1.93	6 (15%)

In the following table, the Chirals column lists the number of chiral outliers, the number of chiral centers analysed, the number of these observed in the model and the number defined in the Chemical Component Dictionary. Similar counts are reported in the Torsion and Rings columns. '-' means no outliers of that kind were identified.

Mol	Type	Chain	Res	Link	Chirals	Torsions	Rings
3	5S6	A	603	-	-	5/19/24/24	0/3/3/3
3	5S6	A	602	-	-	5/19/24/24	0/3/3/3

All (2) bond length outliers are listed below:

Mol	Chain	Res	Type	Atoms	Z	Observed(Å)	Ideal(Å)
3	A	602	5S6	C1-C3	-2.81	1.43	1.50
3	A	603	5S6	C1-C3	-2.69	1.44	1.50

The worst 5 of 11 bond angle outliers are listed below:

Mol	Chain	Res	Type	Atoms	Z	Observed(°)	Ideal(°)
3	A	602	5S6	C33-O25-C10	-8.11	105.29	117.53
3	A	603	5S6	C33-O25-C10	-4.52	110.71	117.53
3	A	602	5S6	O25-C10-C14	3.55	121.50	114.99
3	A	602	5S6	O25-C10-C11	-3.54	118.03	124.12
3	A	603	5S6	O17-C3-N5	2.71	127.43	122.45

There are no chirality outliers.

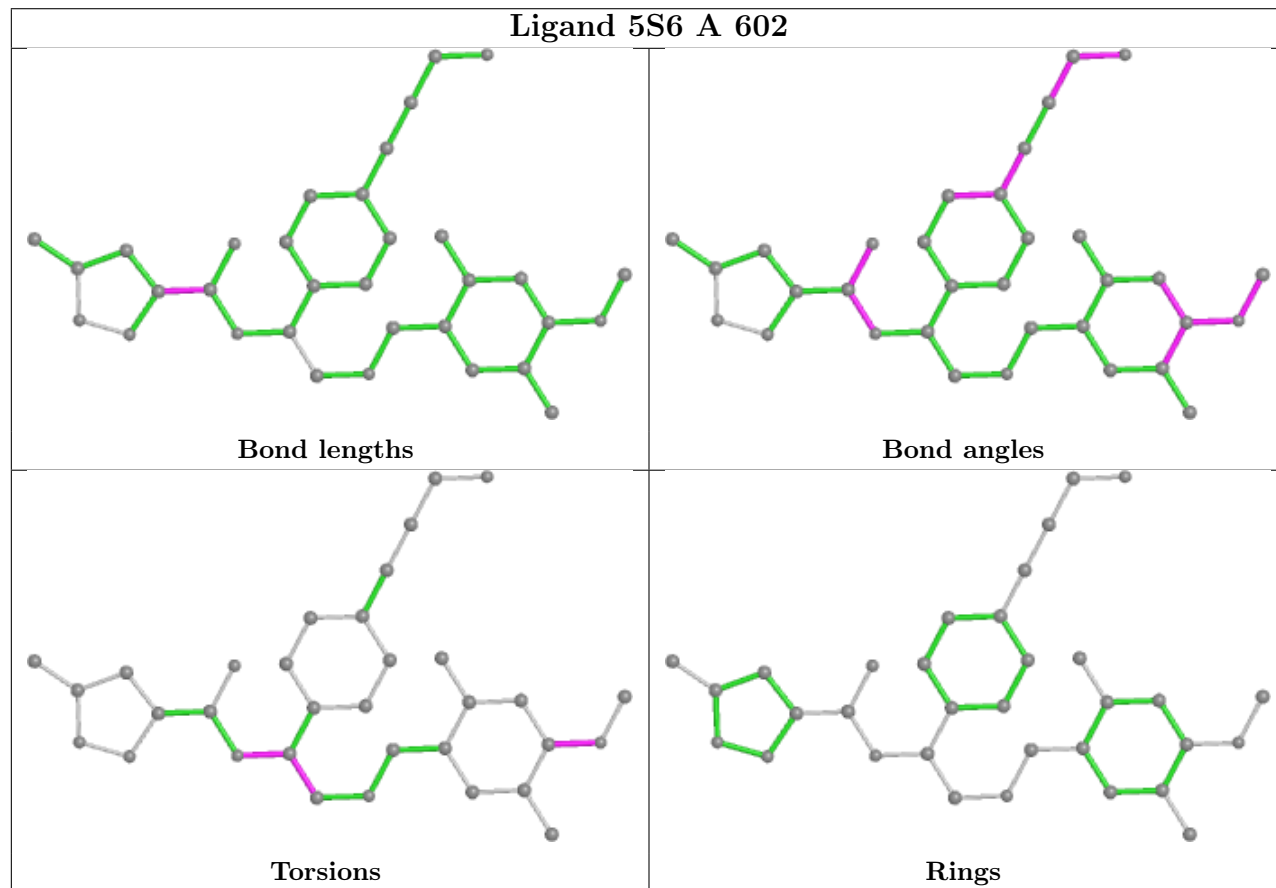
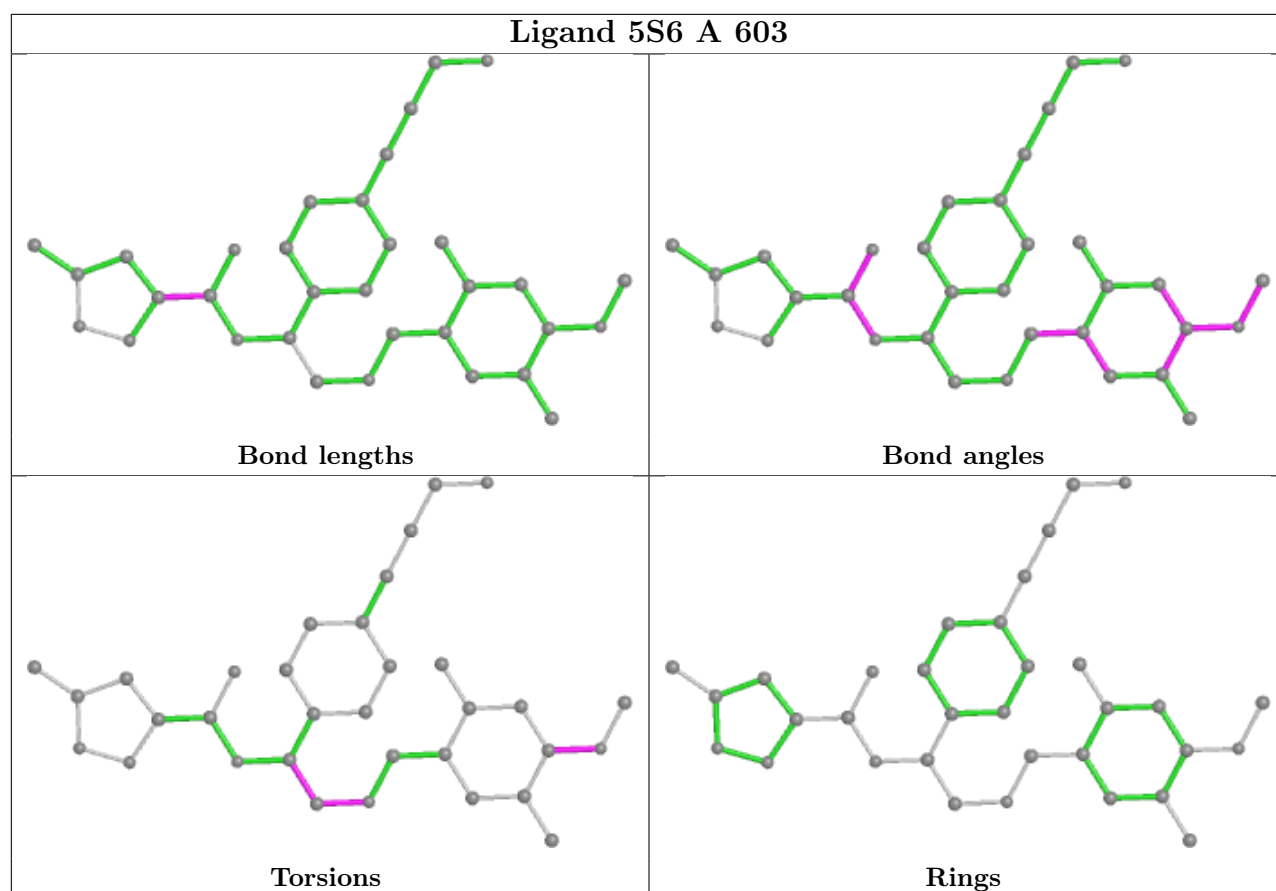
5 of 10 torsion outliers are listed below:

Mol	Chain	Res	Type	Atoms
3	A	602	5S6	C18-C16-C28-N22
3	A	602	5S6	N5-C16-C28-N22
3	A	603	5S6	C18-C16-C28-N22
3	A	603	5S6	N5-C16-C28-N22
3	A	602	5S6	C11-C10-O25-C33

There are no ring outliers.

No monomer is involved in short contacts.

The following is a two-dimensional graphical depiction of Mogul quality analysis of bond lengths, bond angles, torsion angles, and ring geometry for all instances of the Ligand of Interest. In addition, ligands with molecular weight > 250 and outliers as shown on the validation Tables will also be included. For torsion angles, if less than 5% of the Mogul distribution of torsion angles is within 10 degrees of the torsion angle in question, then that torsion angle is considered an outlier. Any bond that is central to one or more torsion angles identified as an outlier by Mogul will be highlighted in the graph. For rings, the root-mean-square deviation (RMSD) between the ring in question and similar rings identified by Mogul is calculated over all ring torsion angles. If the average RMSD is greater than 60 degrees and the minimal RMSD between the ring in question and any Mogul-identified rings is also greater than 60 degrees, then that ring is considered an outlier. The outliers are highlighted in purple. The color gray indicates Mogul did not find sufficient equivalents in the CSD to analyse the geometry.



## 5.7 Other polymers [i](#)

There are no such residues in this entry.

## 5.8 Polymer linkage issues [i](#)

There are no chain breaks in this entry.

## 6 Fit of model and data [i](#)

### 6.1 Protein, DNA and RNA chains [i](#)

In the following table, the column labelled ‘#RSRZ > 2’ contains the number (and percentage) of RSRZ outliers, followed by percent RSRZ outliers for the chain as percentile scores relative to all X-ray entries and entries of similar resolution. The OWAB column contains the minimum, median, 95<sup>th</sup> percentile and maximum values of the occupancy-weighted average B-factor per residue. The column labelled ‘Q < 0.9’ lists the number of (and percentage) of residues with an average occupancy less than 0.9.

Mol	Chain	Analysed	<RSRZ>	#RSRZ>2	OWAB(Å <sup>2</sup> )	Q<0.9
1	A	453/514 (88%)	-0.29	17 (3%) 40 40	21, 32, 64, 99	0
1	B	448/514 (87%)	-0.30	8 (1%) 68 69	23, 33, 53, 95	0
All	All	901/1028 (87%)	-0.30	25 (2%) 53 53	21, 32, 61, 99	0

The worst 5 of 25 RSRZ outliers are listed below:

Mol	Chain	Res	Type	RSRZ
1	B	61	ARG	5.5
1	A	396	PRO	5.3
1	A	484	MET	5.0
1	B	62	ASP	4.6
1	A	56	GLN	4.5

### 6.2 Non-standard residues in protein, DNA, RNA chains [i](#)

In the following table, the Atoms column lists the number of modelled atoms in the group and the number defined in the chemical component dictionary. The B-factors column lists the minimum, median, 95<sup>th</sup> percentile and maximum values of B factors of atoms in the group. The column labelled ‘Q < 0.9’ lists the number of atoms with occupancy less than 0.9.

Mol	Type	Chain	Res	Atoms	RSCC	RSR	B-factors(Å <sup>2</sup> )	Q<0.9
1	LLP	A	311	24/25	0.96	0.16	24,35,50,51	0
1	LLP	B	311	24/25	0.96	0.21	32,43,52,52	9

### 6.3 Carbohydrates [i](#)

There are no monosaccharides in this entry.

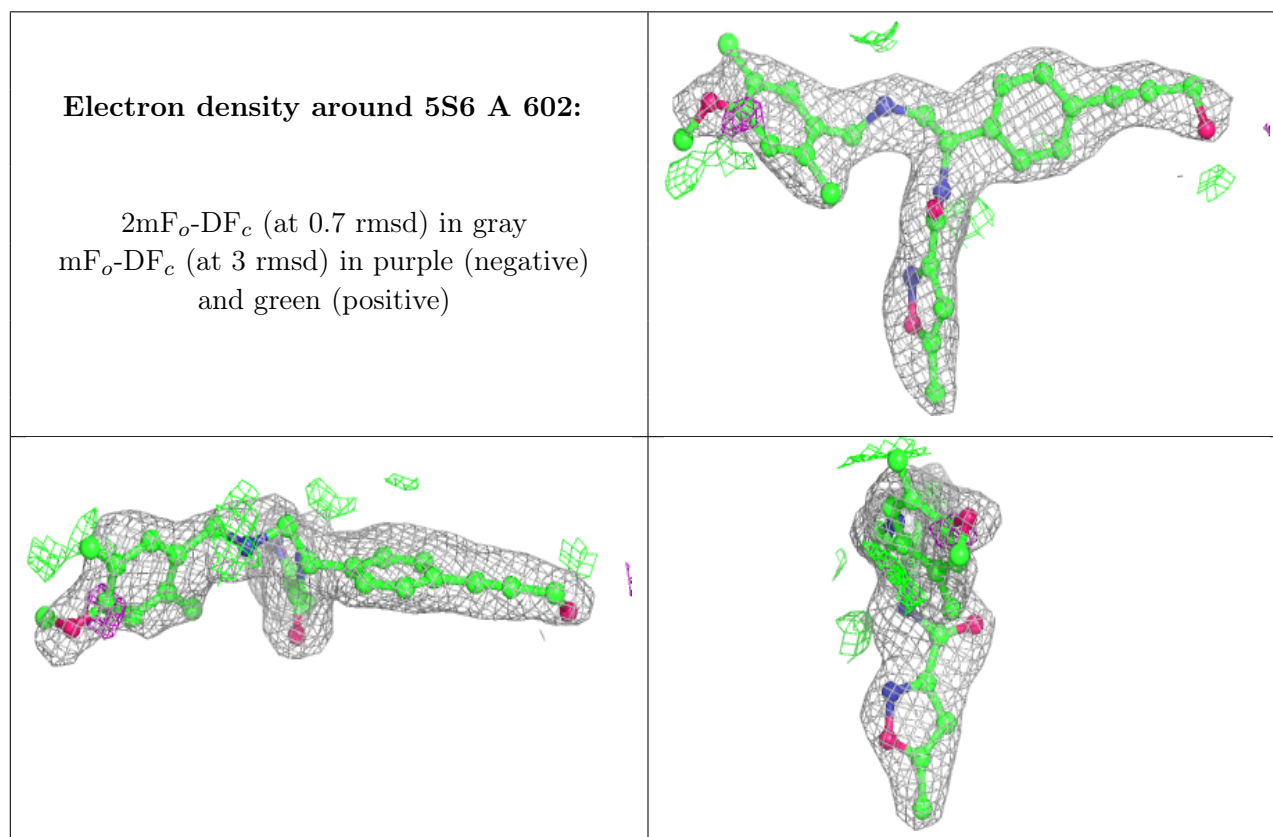


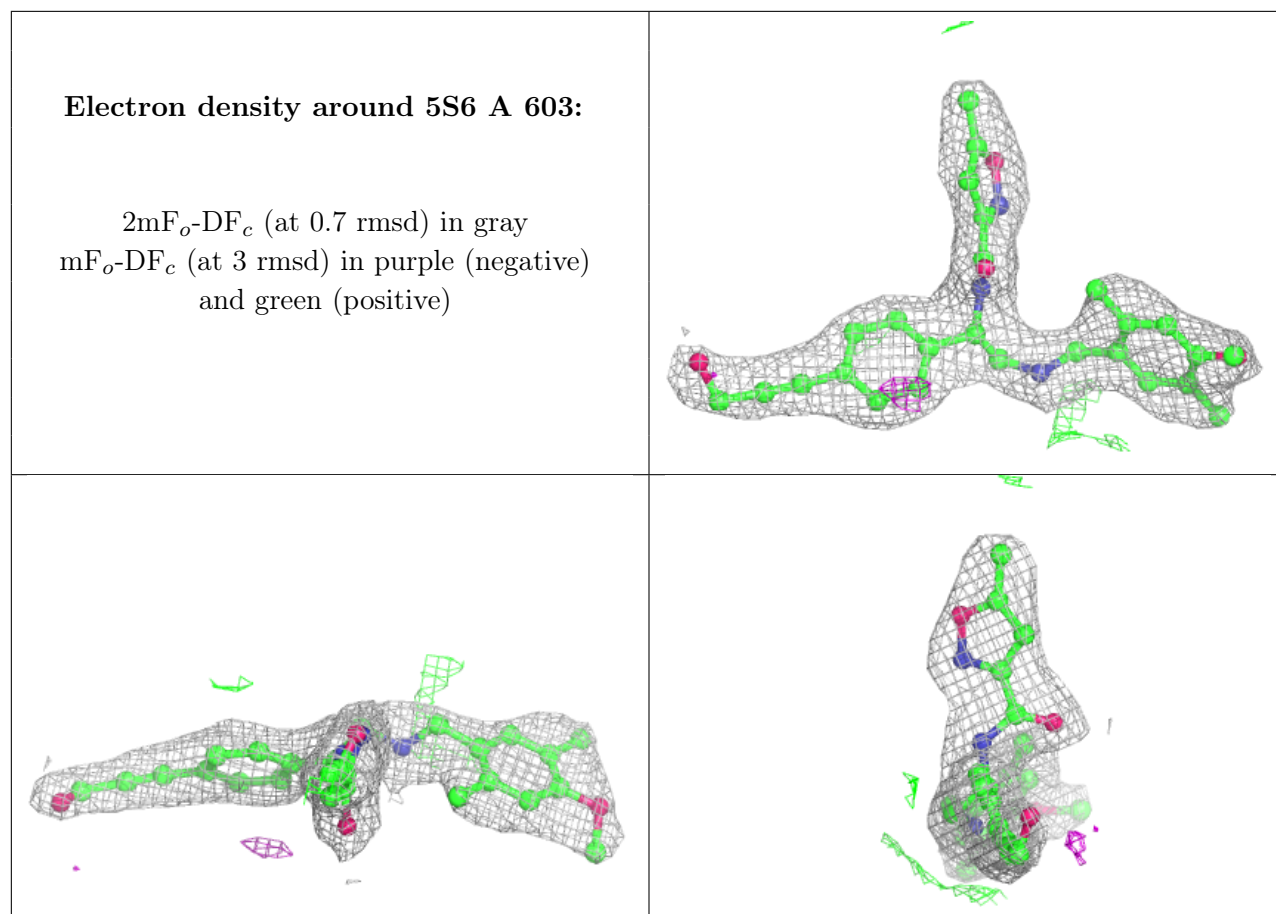
## 6.4 Ligands [i](#)

In the following table, the Atoms column lists the number of modelled atoms in the group and the number defined in the chemical component dictionary. The B-factors column lists the minimum, median, 95<sup>th</sup> percentile and maximum values of B factors of atoms in the group. The column labelled 'Q< 0.9' lists the number of atoms with occupancy less than 0.9.

Mol	Type	Chain	Res	Atoms	RSCC	RSR	B-factors(Å <sup>2</sup> )	Q<0.9
3	5S6	A	602	33/33	0.88	0.18	35,49,60,61	0
3	5S6	A	603	33/33	0.88	0.15	42,47,54,58	0
2	PO4	B	601	5/5	0.98	0.31	26,26,28,29	5
2	PO4	A	601	5/5	0.99	0.34	23,23,27,27	5

The following is a graphical depiction of the model fit to experimental electron density of all instances of the Ligand of Interest. In addition, ligands with molecular weight > 250 and outliers as shown on the geometry validation Tables will also be included. Each fit is shown from different orientation to approximate a three-dimensional view.





## 6.5 Other polymers [i](#)

There are no such residues in this entry.