



# Full wwPDB X-ray Structure Validation Report ⓘ

Apr 2, 2025 – 12:54 am BST

PDB ID : 6EQL / pdb\_00006eq1  
Title : Crystal Structure of Human Glycogenin-1 (GYG1) Tyr195pIPhe mutant complexed with manganese and UDP  
Authors : Bailey, H.J.; Kopec, J.; Bilyard, M.K.; Bezerra, G.A.; Seo Lee, S.; Arrowsmith, C.H.; Edwards, A.M.; Bountra, C.; Davis, B.G.; Yue, W.W.  
Deposited on : 2017-10-13  
Resolution : 2.38 Å(reported)

This is a Full wwPDB X-ray Structure Validation Report for a publicly released PDB entry.

We welcome your comments at [validation@mail.wwpdb.org](mailto:validation@mail.wwpdb.org)

A user guide is available at

<https://www.wwpdb.org/validation/2017/XrayValidationReportHelp>

with specific help available everywhere you see the ⓘ symbol.

The types of validation reports are described at

<http://www.wwpdb.org/validation/2017/FAQs#types>.

---

The following versions of software and data (see [references ⓘ](#)) were used in the production of this report:

MolProbity	:	4.02b-467
Mogul	:	1.8.4, CSD as541be (2020)
Xtriage (Phenix)	:	1.13
EDS	:	3.0
buster-report	:	1.1.7 (2018)
Percentile statistics	:	20231227.v01 (using entries in the PDB archive December 27th 2023)
CCP4	:	9.0.003 (Gargrove)
Density-Fitness	:	1.0.11
Ideal geometry (proteins)	:	Engh & Huber (2001)
Ideal geometry (DNA, RNA)	:	Parkinson et al. (1996)
Validation Pipeline (wwPDB-VP)	:	2.42

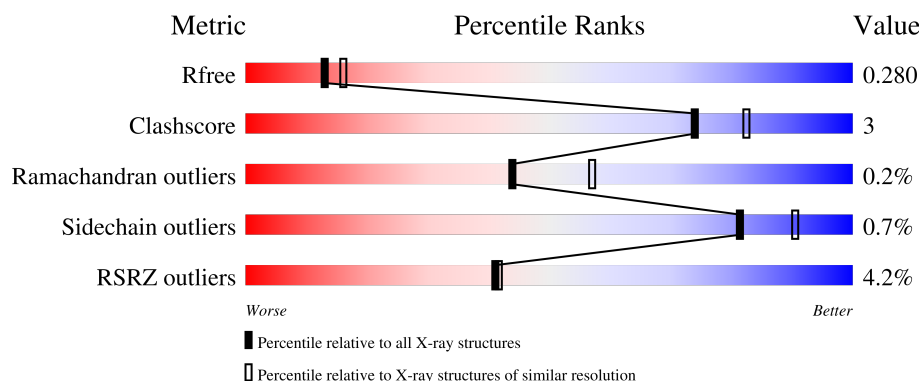
# 1 Overall quality at a glance

The following experimental techniques were used to determine the structure:

*X-RAY DIFFRACTION*

The reported resolution of this entry is 2.38 Å.

Percentile scores (ranging between 0-100) for global validation metrics of the entry are shown in the following graphic. The table shows the number of entries on which the scores are based.



Metric	Whole archive (#Entries)	Similar resolution (#Entries, resolution range(Å))
$R_{free}$	164625	6699 (2.40-2.36)
Clashscore	180529	7414 (2.40-2.36)
Ramachandran outliers	177936	7337 (2.40-2.36)
Sidechain outliers	177891	7338 (2.40-2.36)
RSRZ outliers	164620	6699 (2.40-2.36)

The table below summarises the geometric issues observed across the polymeric chains and their fit to the electron density. The red, orange, yellow and green segments of the lower bar indicate the fraction of residues that contain outliers for  $\geq 3$ , 2, 1 and 0 types of geometric quality criteria respectively. A grey segment represents the fraction of residues that are not modelled. The numeric value for each fraction is indicated below the corresponding segment, with a dot representing fractions  $\leq 5\%$ . The upper red bar (where present) indicates the fraction of residues that have poor fit to the electron density. The numeric value is given above the bar.

Mol	Chain	Length	Quality of chain
1	A	263	 3% 89% 8% .
1	B	263	 5% 78% 6% 15%

## 2 Entry composition [i](#)

There are 6 unique types of molecules in this entry. The entry contains 3843 atoms, of which 0 are hydrogens and 0 are deuteriums.

In the tables below, the ZeroOcc column contains the number of atoms modelled with zero occupancy, the AltConf column contains the number of residues with at least one atom in alternate conformation and the Trace column contains the number of residues modelled with at most 2 atoms.

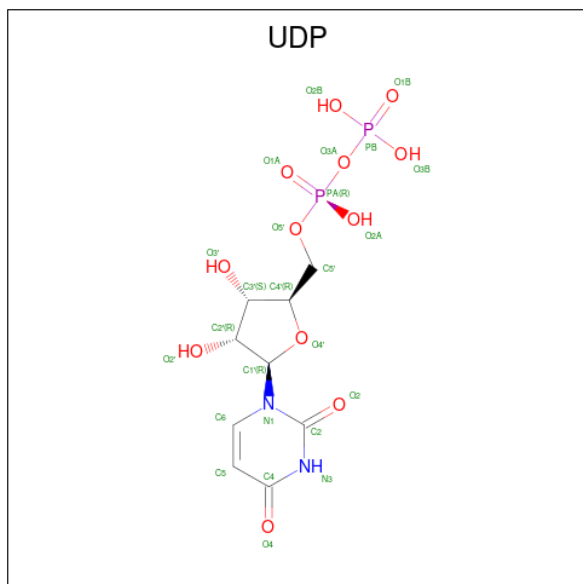
- Molecule 1 is a protein called Glycogenin-1.

Mol	Chain	Residues	Atoms						ZeroOcc	AltConf	Trace
1	A	255	Total	C	I	N	O	S	0	1	0
			1996	1291	1	326	370	8			
1	B	224	Total	C	N	O	S		0	0	0
			1722	1108	283	324	7				

There are 4 discrepancies between the modelled and reference sequences:

Chain	Residue	Modelled	Actual	Comment	Reference
A	0	SER	-	expression tag	UNP P46976
A	195	PHI	TYR	engineered mutation	UNP P46976
B	0	SER	-	expression tag	UNP P46976
B	195	PHI	TYR	engineered mutation	UNP P46976

- Molecule 2 is URIDINE-5'-DIPHOSPHATE (CCD ID: UDP) (formula:  $C_9H_{14}N_2O_{12}P_2$ ).

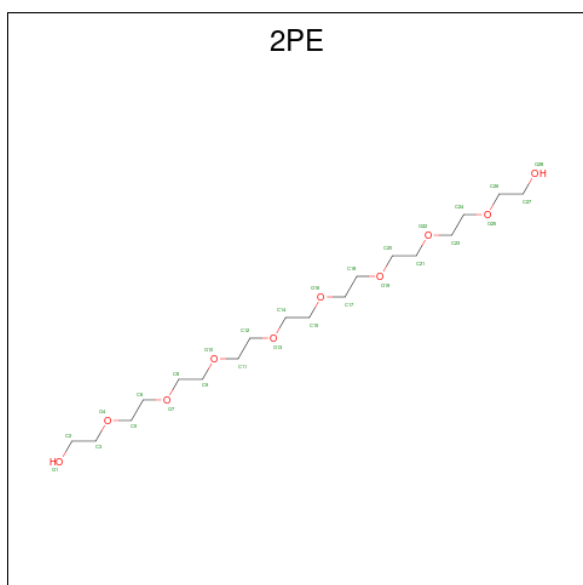


Mol	Chain	Residues	Atoms					ZeroOcc	AltConf
2	A	1	Total	C	N	O	P	0	0
			25	9	2	12	2		
2	B	1	Total	C	N	O	P	0	0
			25	9	2	12	2		

- Molecule 3 is MANGANESE (II) ION (CCD ID: MN) (formula: Mn).

Mol	Chain	Residues	Atoms		ZeroOcc	AltConf
3	A	1	Total	Mn	0	0
			1	1		
3	B	1	Total	Mn	0	0
			1	1		

- Molecule 4 is NONAETHYLENE GLYCOL (CCD ID: 2PE) (formula: C<sub>18</sub>H<sub>38</sub>O<sub>10</sub>).



Mol	Chain	Residues	Atoms			ZeroOcc	AltConf
4	B	1	Total	C	O	0	0
			28	18	10		

- Molecule 5 is 1,2-ETHANEDIOL (CCD ID: EDO) (formula: C<sub>2</sub>H<sub>6</sub>O<sub>2</sub>).



Mol	Chain	Residues	Atoms			ZeroOcc	AltConf
5	B	1	Total	C	O	0	0
			4	2	2		

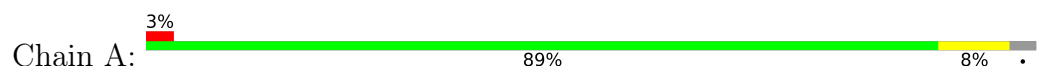
- Molecule 6 is water.

Mol	Chain	Residues	Atoms		ZeroOcc	AltConf
6	A	23	Total	O	0	0
			23	23		
6	B	18	Total	O	0	0
			18	18		

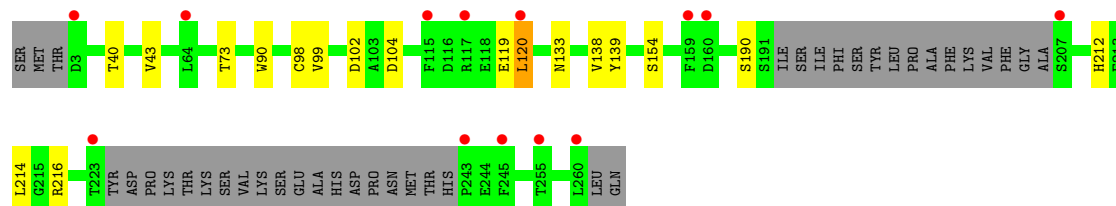
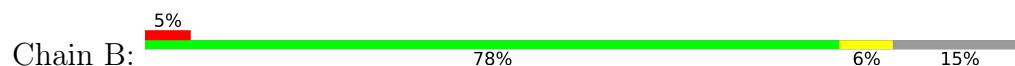
### 3 Residue-property plots [i](#)

These plots are drawn for all protein, RNA, DNA and oligosaccharide chains in the entry. The first graphic for a chain summarises the proportions of the various outlier classes displayed in the second graphic. The second graphic shows the sequence view annotated by issues in geometry and electron density. Residues are color-coded according to the number of geometric quality criteria for which they contain at least one outlier: green = 0, yellow = 1, orange = 2 and red = 3 or more. A red dot above a residue indicates a poor fit to the electron density ( $RSRZ > 2$ ). Stretches of 2 or more consecutive residues without any outlier are shown as a green connector. Residues present in the sample, but not in the model, are shown in grey.

#### • Molecule 1: Glycogenin-1



#### • Molecule 1: Glycogenin-1



## 4 Data and refinement statistics

Property	Value	Source
Space group	P 21 21 21	Depositor
Cell constants a, b, c, $\alpha$ , $\beta$ , $\gamma$	66.17Å 81.05Å 111.20Å 90.00° 90.00° 90.00°	Depositor
Resolution (Å)	46.55 – 2.38 46.55 – 2.38	Depositor EDS
% Data completeness (in resolution range)	99.9 (46.55-2.38) 99.9 (46.55-2.38)	Depositor EDS
$R_{merge}$	0.16	Depositor
$R_{sym}$	(Not available)	Depositor
$\langle I/\sigma(I) \rangle$ <sup>1</sup>	1.58 (at 2.37Å)	Xtriage
Refinement program	PHENIX 1.12_2829	Depositor
R, $R_{free}$	0.225 , 0.281 0.225 , 0.280	Depositor DCC
$R_{free}$ test set	1209 reflections (4.91%)	wwPDB-VP
Wilson B-factor (Å <sup>2</sup> )	46.6	Xtriage
Anisotropy	0.515	Xtriage
Bulk solvent $k_{sol}$ (e/Å <sup>3</sup> ), $B_{sol}$ (Å <sup>2</sup> )	0.32 , 32.6	EDS
L-test for twinning <sup>2</sup>	$\langle  L  \rangle = 0.48$ , $\langle L^2 \rangle = 0.31$	Xtriage
Estimated twinning fraction	No twinning to report.	Xtriage
$F_o, F_c$ correlation	0.94	EDS
Total number of atoms	3843	wwPDB-VP
Average B, all atoms (Å <sup>2</sup> )	52.0	wwPDB-VP

Xtriage's analysis on translational NCS is as follows: *The largest off-origin peak in the Patterson function is 4.92% of the height of the origin peak. No significant pseudotranslation is detected.*

<sup>1</sup>Intensities estimated from amplitudes.

<sup>2</sup>Theoretical values of  $\langle |L| \rangle$ ,  $\langle L^2 \rangle$  for acentric reflections are 0.5, 0.333 respectively for untwinned datasets, and 0.375, 0.2 for perfectly twinned datasets.

## 5 Model quality

### 5.1 Standard geometry

Bond lengths and bond angles in the following residue types are not validated in this section: EDO, PHI, 2PE, UDP, MN

The Z score for a bond length (or angle) is the number of standard deviations the observed value is removed from the expected value. A bond length (or angle) with  $|Z| > 5$  is considered an outlier worth inspection. RMSZ is the root-mean-square of all Z scores of the bond lengths (or angles).

Mol	Chain	Bond lengths		Bond angles	
		RMSZ	# Z  >5	RMSZ	# Z  >5
1	A	0.25	0/2038	0.41	0/2783
1	B	0.24	0/1764	0.40	0/2412
All	All	0.24	0/3802	0.41	0/5195

There are no bond length outliers.

There are no bond angle outliers.

There are no chirality outliers.

There are no planarity outliers.

### 5.2 Too-close contacts

In the following table, the Non-H and H(model) columns list the number of non-hydrogen atoms and hydrogen atoms in the chain respectively. The H(added) column lists the number of hydrogen atoms added and optimized by MolProbity. The Clashes column lists the number of clashes within the asymmetric unit, whereas Symm-Clashes lists symmetry-related clashes.

Mol	Chain	Non-H	H(model)	H(added)	Clashes	Symm-Clashes
1	A	1996	0	1941	11	0
1	B	1722	0	1649	9	0
2	A	25	0	11	1	0
2	B	25	0	11	1	0
3	A	1	0	0	0	0
3	B	1	0	0	0	0
4	B	28	0	38	1	0
5	B	4	0	6	0	0
6	A	23	0	0	0	0
6	B	18	0	0	0	0
All	All	3843	0	3656	22	0



The all-atom clashscore is defined as the number of clashes found per 1000 atoms (including hydrogen atoms). The all-atom clashscore for this structure is 3.

All (22) close contacts within the same asymmetric unit are listed below, sorted by their clash magnitude.

Atom-1	Atom-2	Interatomic distance (Å)	Clash overlap (Å)
1:B:99:VAL:HG22	1:B:138:VAL:HG22	1.82	0.62
1:A:191:SER:HB3	1:A:195:PHI:HD1	1.84	0.58
1:B:216:ARG:HA	4:B:303:2PE:H261	1.86	0.57
1:A:189:LEU:HD22	1:A:192:ILE:HG23	1.87	0.55
1:A:192:ILE:HD13	1:A:211:VAL:HB	1.90	0.52
1:B:119:GLU:HA	1:B:120:LEU:HA	1.55	0.49
1:B:133:ASN:HD21	1:B:214:LEU:HD11	1.79	0.47
1:B:190:SER:HB3	1:B:212:HIS:HB3	1.96	0.47
1:B:40:THR:O	1:B:43:VAL:HG22	2.16	0.46
1:A:83:THR:HG23	1:A:163:ASP:HB3	1.97	0.46
2:A:301:UDP:H5'2	2:A:301:UDP:H6	1.81	0.46
1:A:72:LEU:O	1:A:76:LYS:HD3	2.17	0.45
1:A:9:LEU:HD22	1:A:86:LYS:HB2	1.98	0.45
1:B:102:ASP:HB3	1:B:104:ASP:OD1	2.18	0.44
1:A:86:LYS:HE3	1:A:100:PHE:CE1	2.53	0.43
1:B:98:CYS:HB2	1:B:139:TYR:CZ	2.53	0.43
2:B:301:UDP:H6	2:B:301:UDP:H5'2	1.83	0.43
1:A:189:LEU:HD12	1:A:208:ALA:HB2	2.01	0.42
1:A:102:ASP:HB3	1:A:104:ASP:OD1	2.20	0.42
1:B:73:THR:HG23	1:B:154:SER:HB2	2.02	0.41
1:A:119:GLU:HA	1:A:120:LEU:HA	1.53	0.41
1:A:71:HIS:O	1:A:75:MET:HG3	2.21	0.40

There are no symmetry-related clashes.

## 5.3 Torsion angles

### 5.3.1 Protein backbone

In the following table, the Percentiles column shows the percent Ramachandran outliers of the chain as a percentile score with respect to all X-ray entries followed by that with respect to entries of similar resolution.

The Analysed column shows the number of residues for which the backbone conformation was analysed, and the total number of residues.

Mol	Chain	Analysed	Favoured	Allowed	Outliers	Percentiles	
1	A	251/263 (95%)	246 (98%)	4 (2%)	1 (0%)	30	41
1	B	218/263 (83%)	209 (96%)	9 (4%)	0	100	100
All	All	469/526 (89%)	455 (97%)	13 (3%)	1 (0%)	44	57

All (1) Ramachandran outliers are listed below:

Mol	Chain	Res	Type
1	A	178	ASP

### 5.3.2 Protein sidechains ⓘ

In the following table, the Percentiles column shows the percent sidechain outliers of the chain as a percentile score with respect to all X-ray entries followed by that with respect to entries of similar resolution.

The Analysed column shows the number of residues for which the sidechain conformation was analysed, and the total number of residues.

Mol	Chain	Analysed	Rotameric	Outliers	Percentiles	
1	A	219/234 (94%)	218 (100%)	1 (0%)	86	93
1	B	186/234 (80%)	184 (99%)	2 (1%)	70	83
All	All	405/468 (86%)	402 (99%)	3 (1%)	81	90

All (3) residues with a non-rotameric sidechain are listed below:

Mol	Chain	Res	Type
1	A	90	TRP
1	B	90	TRP
1	B	120	LEU

Sometimes sidechains can be flipped to improve hydrogen bonding and reduce clashes. There are no such sidechains identified.

### 5.3.3 RNA ⓘ

There are no RNA molecules in this entry.

## 5.4 Non-standard residues in protein, DNA, RNA chains ⓘ

1 non-standard protein/DNA/RNA residue is modelled in this entry.

In the following table, the Counts columns list the number of bonds (or angles) for which Mogul statistics could be retrieved, the number of bonds (or angles) that are observed in the model and the number of bonds (or angles) that are defined in the Chemical Component Dictionary. The Link column lists molecule types, if any, to which the group is linked. The Z score for a bond length (or angle) is the number of standard deviations the observed value is removed from the expected value. A bond length (or angle) with  $|Z| > 2$  is considered an outlier worth inspection. RMSZ is the root-mean-square of all Z scores of the bond lengths (or angles).

Mol	Type	Chain	Res	Link	Bond lengths			Bond angles		
					Counts	RMSZ	$\# Z  > 2$	Counts	RMSZ	$\# Z  > 2$
1	PHI	A	195	1	11,12,13	1.19	1 (9%)	12,15,17	1.05	1 (8%)

In the following table, the Chirals column lists the number of chiral outliers, the number of chiral centers analysed, the number of these observed in the model and the number defined in the Chemical Component Dictionary. Similar counts are reported in the Torsion and Rings columns. '-' means no outliers of that kind were identified.

Mol	Type	Chain	Res	Link	Chirals	Torsions	Rings
1	PHI	A	195	1	-	0/5/6/8	0/1/1/1

All (1) bond length outliers are listed below:

Mol	Chain	Res	Type	Atoms	Z	Observed(Å)	Ideal(Å)
1	A	195	PHI	CZ-I	-3.15	2.02	2.10

All (1) bond angle outliers are listed below:

Mol	Chain	Res	Type	Atoms	Z	Observed(°)	Ideal(°)
1	A	195	PHI	CG-CB-CA	-2.73	108.58	114.10

There are no chirality outliers.

There are no torsion outliers.

There are no ring outliers.

1 monomer is involved in 1 short contact:

Mol	Chain	Res	Type	Clashes	Symm-Clashes
1	A	195	PHI	1	0

## 5.5 Carbohydrates [i](#)

There are no oligosaccharides in this entry.

## 5.6 Ligand geometry

Of 6 ligands modelled in this entry, 2 are monoatomic - leaving 4 for Mogul analysis.

In the following table, the Counts columns list the number of bonds (or angles) for which Mogul statistics could be retrieved, the number of bonds (or angles) that are observed in the model and the number of bonds (or angles) that are defined in the Chemical Component Dictionary. The Link column lists molecule types, if any, to which the group is linked. The Z score for a bond length (or angle) is the number of standard deviations the observed value is removed from the expected value. A bond length (or angle) with  $|Z| > 2$  is considered an outlier worth inspection. RMSZ is the root-mean-square of all Z scores of the bond lengths (or angles).

Mol	Type	Chain	Res	Link	Bond lengths			Bond angles		
					Counts	RMSZ	# Z  > 2	Counts	RMSZ	# Z  > 2
4	2PE	B	303	-	27,27,27	0.55	0	26,26,26	0.19	0
2	UDP	B	301	3	24,26,26	0.38	0	37,40,40	0.78	2 (5%)
5	EDO	B	304	-	3,3,3	0.47	0	2,2,2	0.33	0
2	UDP	A	301	3	24,26,26	0.48	0	37,40,40	0.74	2 (5%)

In the following table, the Chirals column lists the number of chiral outliers, the number of chiral centers analysed, the number of these observed in the model and the number defined in the Chemical Component Dictionary. Similar counts are reported in the Torsion and Rings columns. '-' means no outliers of that kind were identified.

Mol	Type	Chain	Res	Link	Chirals	Torsions	Rings
4	2PE	B	303	-	-	19/25/25/25	-
2	UDP	B	301	3	-	5/16/32/32	0/2/2/2
5	EDO	B	304	-	-	0/1/1/1	-
2	UDP	A	301	3	-	7/16/32/32	0/2/2/2

There are no bond length outliers.

All (4) bond angle outliers are listed below:

Mol	Chain	Res	Type	Atoms	Z	Observed(°)	Ideal(°)
2	B	301	UDP	PA-O3A-PB	-3.06	122.33	132.83
2	A	301	UDP	PA-O3A-PB	-2.65	123.72	132.83
2	B	301	UDP	O3B-PB-O3A	2.26	112.21	104.64
2	A	301	UDP	O3B-PB-O3A	2.20	112.00	104.64

There are no chirality outliers.

All (31) torsion outliers are listed below:

Mol	Chain	Res	Type	Atoms
2	A	301	UDP	C5'-O5'-PA-O1A
2	B	301	UDP	C5'-O5'-PA-O2A
4	B	303	2PE	O16-C17-C18-O19
4	B	303	2PE	O10-C11-C12-O13
4	B	303	2PE	O22-C23-C24-O25
4	B	303	2PE	O13-C14-C15-O16
2	B	301	UDP	O4'-C4'-C5'-O5'
4	B	303	2PE	O19-C20-C21-O22
2	A	301	UDP	PB-O3A-PA-O1A
4	B	303	2PE	C5-C6-O7-C8
4	B	303	2PE	C24-C23-O22-C21
2	A	301	UDP	C5'-O5'-PA-O3A
2	B	301	UDP	C5'-O5'-PA-O3A
2	A	301	UDP	C5'-O5'-PA-O2A
2	B	301	UDP	C5'-O5'-PA-O1A
4	B	303	2PE	C2-C3-O4-C5
4	B	303	2PE	C8-C9-O10-C11
4	B	303	2PE	C23-C24-O25-C26
2	B	301	UDP	C4'-C5'-O5'-PA
4	B	303	2PE	C11-C12-O13-C14
4	B	303	2PE	C12-C11-O10-C9
2	A	301	UDP	C4'-C5'-O5'-PA
4	B	303	2PE	O1-C2-C3-O4
4	B	303	2PE	O4-C5-C6-O7
2	A	301	UDP	O4'-C4'-C5'-O5'
4	B	303	2PE	C14-C15-O16-C17
4	B	303	2PE	C20-C21-O22-C23
4	B	303	2PE	O7-C8-C9-O10
4	B	303	2PE	C6-C5-O4-C3
2	A	301	UDP	PB-O3A-PA-O2A
4	B	303	2PE	C15-C14-O13-C12

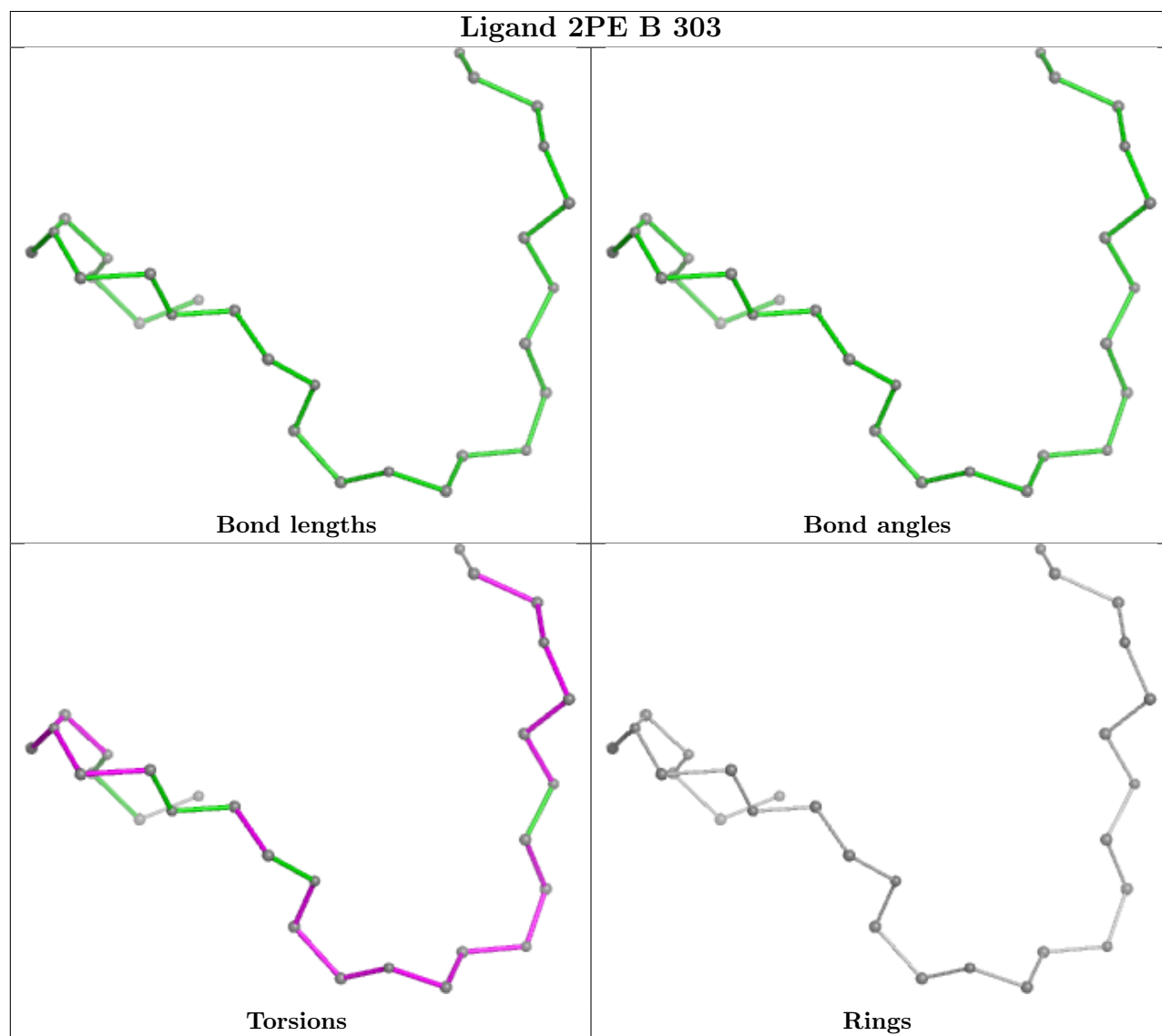
There are no ring outliers.

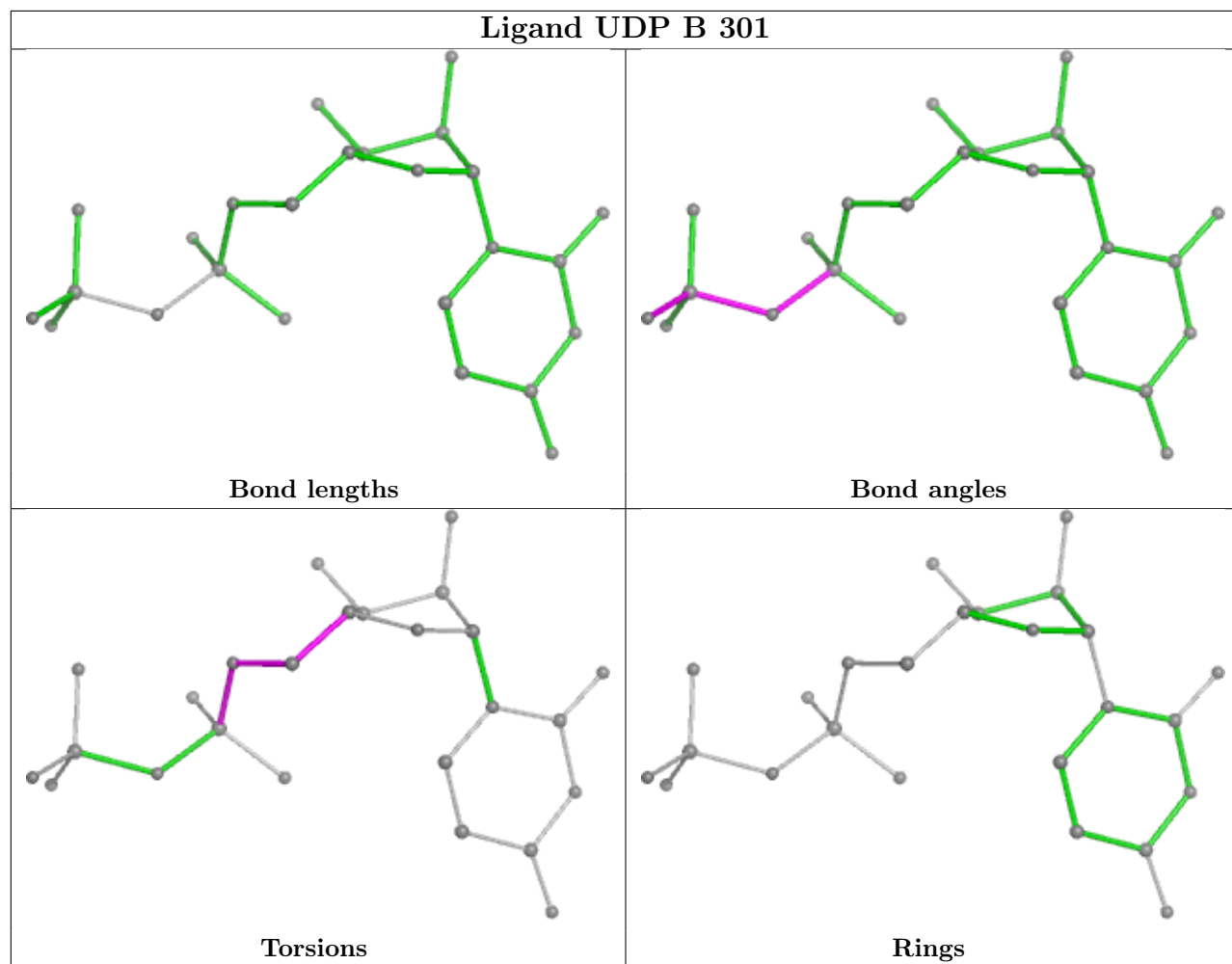
3 monomers are involved in 3 short contacts:

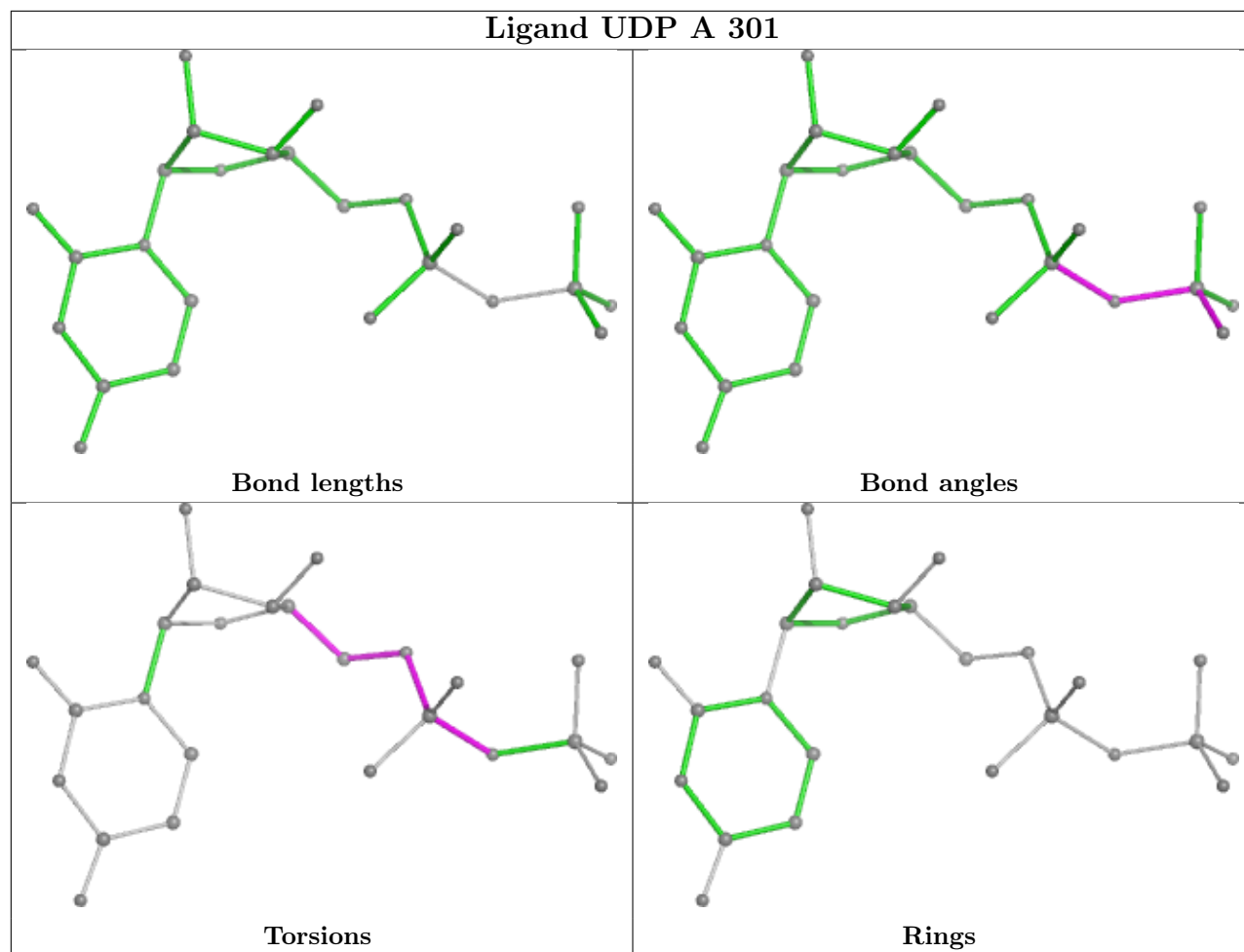
Mol	Chain	Res	Type	Clashes	Symm-Clashes
4	B	303	2PE	1	0
2	B	301	UDP	1	0
2	A	301	UDP	1	0

The following is a two-dimensional graphical depiction of Mogul quality analysis of bond lengths, bond angles, torsion angles, and ring geometry for all instances of the Ligand of Interest. In addition, ligands with molecular weight > 250 and outliers as shown on the validation Tables will

also be included. For torsion angles, if less than 5% of the Mogul distribution of torsion angles is within 10 degrees of the torsion angle in question, then that torsion angle is considered an outlier. Any bond that is central to one or more torsion angles identified as an outlier by Mogul will be highlighted in the graph. For rings, the root-mean-square deviation (RMSD) between the ring in question and similar rings identified by Mogul is calculated over all ring torsion angles. If the average RMSD is greater than 60 degrees and the minimal RMSD between the ring in question and any Mogul-identified rings is also greater than 60 degrees, then that ring is considered an outlier. The outliers are highlighted in purple. The color gray indicates Mogul did not find sufficient equivalents in the CSD to analyse the geometry.







## 5.7 Other polymers [i](#)

There are no such residues in this entry.

## 5.8 Polymer linkage issues [i](#)

There are no chain breaks in this entry.



## 6 Fit of model and data

### 6.1 Protein, DNA and RNA chains

In the following table, the column labelled ‘#RSRZ> 2’ contains the number (and percentage) of RSRZ outliers, followed by percent RSRZ outliers for the chain as percentile scores relative to all X-ray entries and entries of similar resolution. The OWAB column contains the minimum, median, 95<sup>th</sup> percentile and maximum values of the occupancy-weighted average B-factor per residue. The column labelled ‘Q< 0.9’ lists the number of (and percentage) of residues with an average occupancy less than 0.9.

Mol	Chain	Analysed	<RSRZ>	#RSRZ>2	OWAB(Å <sup>2</sup> )	Q<0.9
1	A	254/263 (96%)	0.23	7 (2%) 55 54	30, 46, 64, 82	1 (0%)
1	B	224/263 (85%)	0.61	13 (5%) 30 30	41, 56, 71, 81	0
All	All	478/526 (90%)	0.41	20 (4%) 41 42	30, 50, 69, 82	1 (0%)

All (20) RSRZ outliers are listed below:

Mol	Chain	Res	Type	RSRZ
1	A	194	ILE	4.1
1	B	260	LEU	4.1
1	A	197	TYR	3.4
1	B	115	PHE	3.2
1	B	245	PHE	3.1
1	B	64	LEU	3.1
1	B	223	THR	3.1
1	B	160	ASP	3.0
1	B	159	PHE	2.9
1	B	255	THR	2.9
1	B	3	ASP	2.8
1	B	243	PRO	2.7
1	A	231	VAL	2.5
1	A	239	ASN	2.5
1	B	207	SER	2.3
1	A	196	SER	2.3
1	B	120	LEU	2.2
1	A	261	LEU	2.2
1	A	238	PRO	2.2
1	B	117	ARG	2.0

## 6.2 Non-standard residues in protein, DNA, RNA chains [i](#)

In the following table, the Atoms column lists the number of modelled atoms in the group and the number defined in the chemical component dictionary. The B-factors column lists the minimum, median, 95<sup>th</sup> percentile and maximum values of B factors of atoms in the group. The column labelled 'Q< 0.9' lists the number of atoms with occupancy less than 0.9.

Mol	Type	Chain	Res	Atoms	RSCC	RSR	B-factors(Å <sup>2</sup> )	Q<0.9
1	PHI	A	195	12/13	0.96	0.16	49,52,63,66	12

## 6.3 Carbohydrates [i](#)

There are no monosaccharides in this entry.

## 6.4 Ligands [i](#)

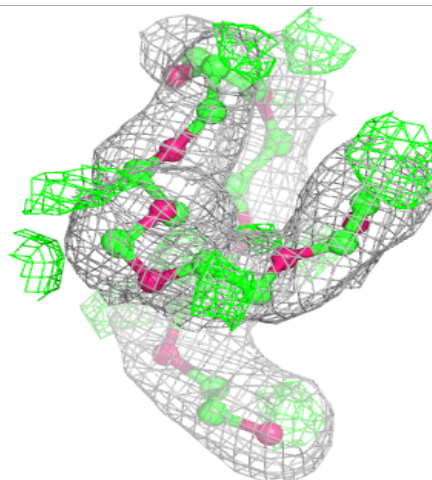
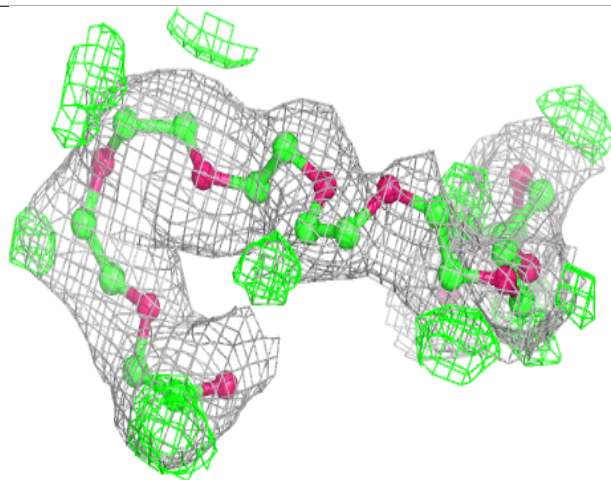
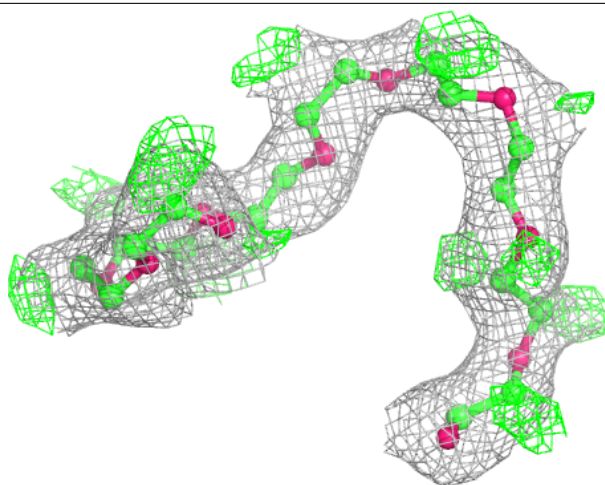
In the following table, the Atoms column lists the number of modelled atoms in the group and the number defined in the chemical component dictionary. The B-factors column lists the minimum, median, 95<sup>th</sup> percentile and maximum values of B factors of atoms in the group. The column labelled 'Q< 0.9' lists the number of atoms with occupancy less than 0.9.

Mol	Type	Chain	Res	Atoms	RSCC	RSR	B-factors(Å <sup>2</sup> )	Q<0.9
4	2PE	B	303	28/28	0.73	0.19	51,66,80,86	0
5	EDO	B	304	4/4	0.73	0.21	56,59,60,79	0
2	UDP	A	301	25/25	0.94	0.09	35,42,51,57	0
2	UDP	B	301	25/25	0.96	0.07	37,48,53,55	0
3	MN	A	302	1/1	0.99	0.03	38,38,38,38	0
3	MN	B	302	1/1	0.99	0.02	44,44,44,44	0

The following is a graphical depiction of the model fit to experimental electron density of all instances of the Ligand of Interest. In addition, ligands with molecular weight > 250 and outliers as shown on the geometry validation Tables will also be included. Each fit is shown from different orientation to approximate a three-dimensional view.

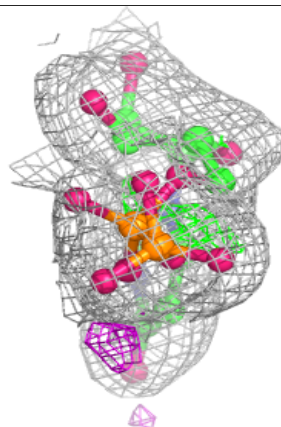
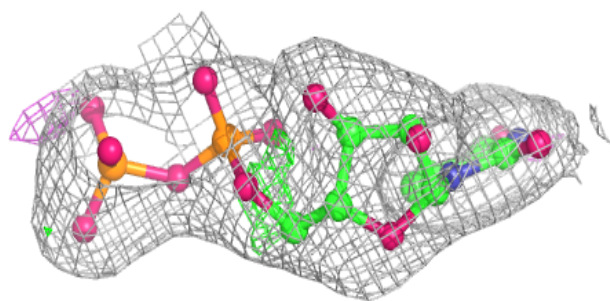
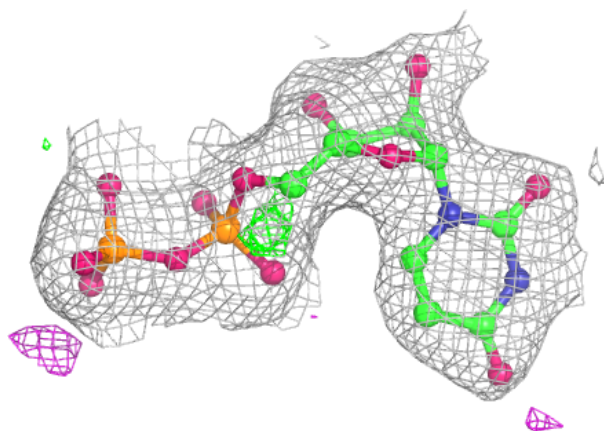
**Electron density around 2PE B 303:**

$2mF_o-DF_c$  (at 0.7 rmsd) in gray  
 $mF_o-DF_c$  (at 3 rmsd) in purple (negative)  
and green (positive)



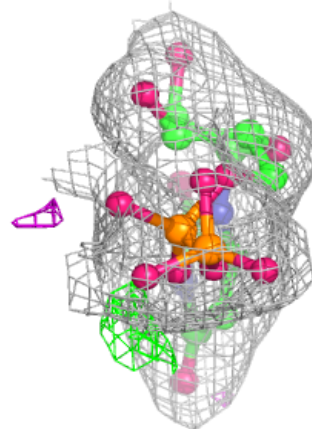
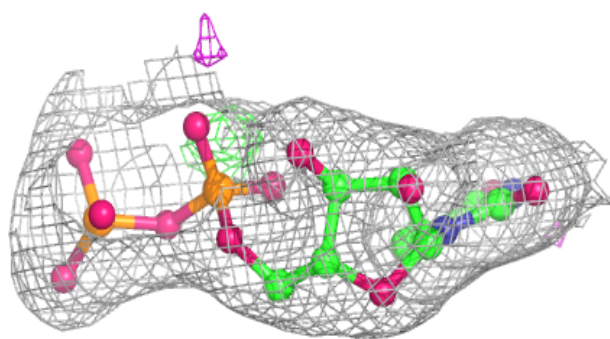
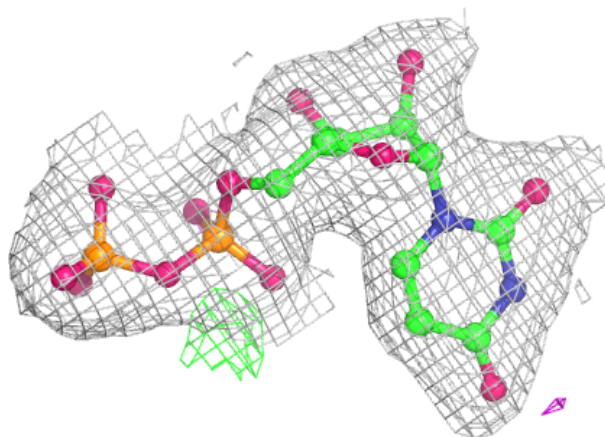
**Electron density around UDP A 301:**

$2mF_o-DF_c$  (at 0.7 rmsd) in gray  
 $mF_o-DF_c$  (at 3 rmsd) in purple (negative)  
and green (positive)



**Electron density around UDP B 301:**

$2mF_o-DF_c$  (at 0.7 rmsd) in gray  
 $mF_o-DF_c$  (at 3 rmsd) in purple (negative)  
and green (positive)



## 6.5 Other polymers [i](#)

There are no such residues in this entry.