



Full wwPDB X-ray Structure Validation Report ⓘ

Feb 11, 2024 – 10:32 PM EST

PDB ID : 3EEM
Title : Candida glabrata Dihydrofolate Reductase complexed with 2,4-diamino-5-[3-methyl-3-(3-methoxy-5-(2,6-dimethylphenyl)phenyl)prop-1-ynyl]-6-methylpyrimidine(UCP111D26M) and NADPH
Authors : Liu, J.; Anderson, A.
Deposited on : 2008-09-04
Resolution : 2.11 Å(reported)

This is a Full wwPDB X-ray Structure Validation Report for a publicly released PDB entry.

We welcome your comments at validation@mail.wwpdb.org

A user guide is available at

<https://www.wwpdb.org/validation/2017/XrayValidationReportHelp>

with specific help available everywhere you see the ⓘ symbol.

The types of validation reports are described at

<http://www.wwpdb.org/validation/2017/FAQs#types>.

The following versions of software and data (see [references ⓘ](#)) were used in the production of this report:

MolProbity : 4.02b-467
Mogul : 1.8.5 (274361), CSD as541be (2020)
Xtriage (Phenix) : 1.13
EDS : 2.36
buster-report : 1.1.7 (2018)
Percentile statistics : 20191225.v01 (using entries in the PDB archive December 25th 2019)
Refmac : 5.8.0158
CCP4 : 7.0.044 (Gargrove)
Ideal geometry (proteins) : Engh & Huber (2001)
Ideal geometry (DNA, RNA) : Parkinson et al. (1996)
Validation Pipeline (wwPDB-VP) : 2.36

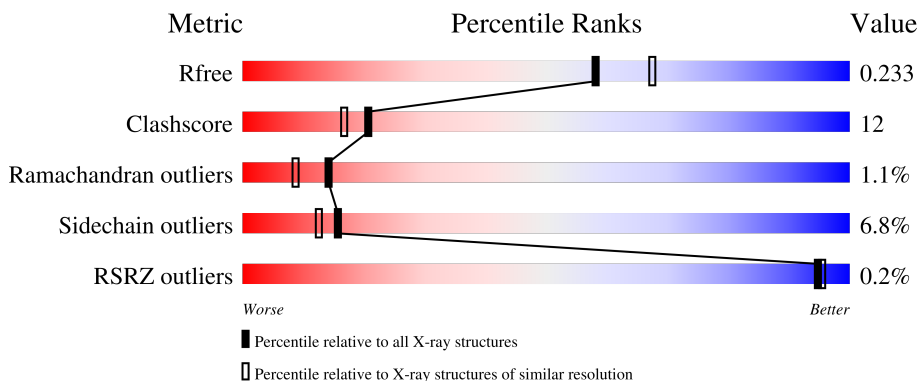
1 Overall quality at a glance

The following experimental techniques were used to determine the structure:

X-RAY DIFFRACTION

The reported resolution of this entry is 2.11 Å.

Percentile scores (ranging between 0-100) for global validation metrics of the entry are shown in the following graphic. The table shows the number of entries on which the scores are based.



Metric	Whole archive (#Entries)	Similar resolution (#Entries, resolution range(Å))
R_{free}	130704	6241 (2.14-2.10)
Clashscore	141614	6778 (2.14-2.10)
Ramachandran outliers	138981	6705 (2.14-2.10)
Sidechain outliers	138945	6706 (2.14-2.10)
RSRZ outliers	127900	6112 (2.14-2.10)

The table below summarises the geometric issues observed across the polymeric chains and their fit to the electron density. The red, orange, yellow and green segments of the lower bar indicate the fraction of residues that contain outliers for ≥ 3 , 2, 1 and 0 types of geometric quality criteria respectively. A grey segment represents the fraction of residues that are not modelled. The numeric value for each fraction is indicated below the corresponding segment, with a dot representing fractions $\leq 5\%$. The upper red bar (where present) indicates the fraction of residues that have poor fit to the electron density. The numeric value is given above the bar.

Mol	Chain	Length	Quality of chain
1	A	227	
1	B	227	

The following table lists non-polymeric compounds, carbohydrate monomers and non-standard residues in protein, DNA, RNA chains that are outliers for geometric or electron-density-fit criteria:

Mol	Type	Chain	Res	Chirality	Geometry	Clashes	Electron density
3	53V	B	229	-	-	X	-

2 Entry composition i

There are 4 unique types of molecules in this entry. The entry contains 4051 atoms, of which 0 are hydrogens and 0 are deuteriums.

In the tables below, the ZeroOcc column contains the number of atoms modelled with zero occupancy, the AltConf column contains the number of residues with at least one atom in alternate conformation and the Trace column contains the number of residues modelled with at most 2 atoms.

- Molecule 1 is a protein called Dihydrofolate reductase.

Mol	Chain	Residues	Atoms					ZeroOcc	AltConf	Trace
			Total	C	N	O	S			
1	A	225	1846	1180	325	334	7	0	0	0
1	B	225	1846	1180	325	334	7	0	0	0

There are 20 discrepancies between the modelled and reference sequences:

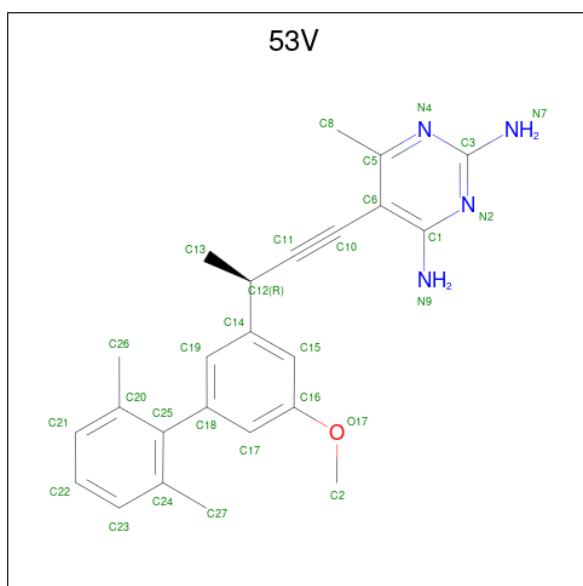
Chain	Residue	Modelled	Actual	Comment	Reference
A	218	LEU	-	expression tag	UNP Q6FPH0
A	219	GLU	-	expression tag	UNP Q6FPH0
A	220	HIS	-	expression tag	UNP Q6FPH0
A	221	HIS	-	expression tag	UNP Q6FPH0
A	222	HIS	-	expression tag	UNP Q6FPH0
A	223	HIS	-	expression tag	UNP Q6FPH0
A	224	HIS	-	expression tag	UNP Q6FPH0
A	225	HIS	-	expression tag	UNP Q6FPH0
A	226	HIS	-	expression tag	UNP Q6FPH0
A	227	HIS	-	expression tag	UNP Q6FPH0
B	218	LEU	-	expression tag	UNP Q6FPH0
B	219	GLU	-	expression tag	UNP Q6FPH0
B	220	HIS	-	expression tag	UNP Q6FPH0
B	221	HIS	-	expression tag	UNP Q6FPH0
B	222	HIS	-	expression tag	UNP Q6FPH0
B	223	HIS	-	expression tag	UNP Q6FPH0
B	224	HIS	-	expression tag	UNP Q6FPH0
B	225	HIS	-	expression tag	UNP Q6FPH0
B	226	HIS	-	expression tag	UNP Q6FPH0
B	227	HIS	-	expression tag	UNP Q6FPH0

- Molecule 2 is NADPH DIHYDRO-NICOTINAMIDE-ADENINE-DINUCLEOTIDE PHOSPHATE (three-letter code: NDP) (formula: C₂₁H₃₀N₇O₁₇P₃).



Mol	Chain	Residues	Atoms				ZeroOcc	AltConf	
			Total	C	N	O			P
2	A	1	48	21	7	17	3	0	0
2	B	1	48	21	7	17	3	0	0

- Molecule 3 is 5-[(3R)-3-(5-methoxy-2',6'-dimethylbiphenyl-3-yl)but-1-yn-1-yl]-6-methylpyrimidine-2,4-diamine (three-letter code: 53V) (formula: C₂₄H₂₆N₄O).



Mol	Chain	Residues	Atoms				ZeroOcc	AltConf
			Total	C	N	O		
3	A	1	29	24	4	1	0	0

Continued on next page...

Continued from previous page...

Mol	Chain	Residues	Atoms				ZeroOcc	AltConf
			Total	C	N	O		
3	B	1	29	24	4	1	0	0

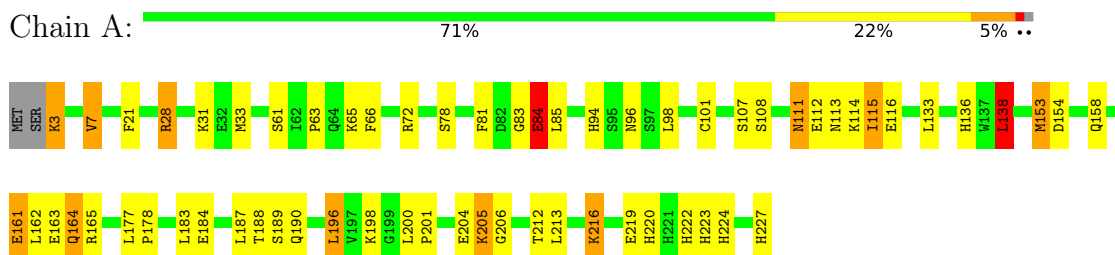
- Molecule 4 is water.

Mol	Chain	Residues	Atoms		ZeroOcc	AltConf
4	A	106	Total	O	0	0
			106	106		
4	B	99	Total	O	0	0
			99	99		

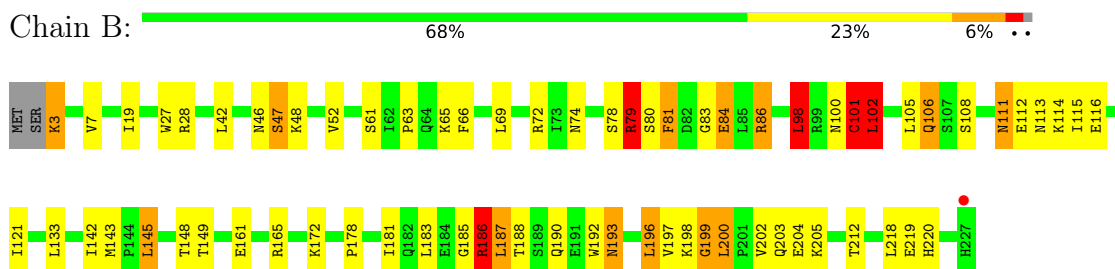
3 Residue-property plots [i](#)

These plots are drawn for all protein, RNA, DNA and oligosaccharide chains in the entry. The first graphic for a chain summarises the proportions of the various outlier classes displayed in the second graphic. The second graphic shows the sequence view annotated by issues in geometry and electron density. Residues are color-coded according to the number of geometric quality criteria for which they contain at least one outlier: green = 0, yellow = 1, orange = 2 and red = 3 or more. A red dot above a residue indicates a poor fit to the electron density ($RSRZ > 2$). Stretches of 2 or more consecutive residues without any outlier are shown as a green connector. Residues present in the sample, but not in the model, are shown in grey.

- Molecule 1: Dihydrofolate reductase



- Molecule 1: Dihydrofolate reductase



4 Data and refinement statistics i

Property	Value	Source
Space group	P 41	Depositor
Cell constants a, b, c, α , β , γ	42.82Å 42.82Å 231.53Å 90.00° 90.00° 90.00°	Depositor
Resolution (Å)	42.84 – 2.11 42.82 – 2.11	Depositor EDS
% Data completeness (in resolution range)	95.0 (42.84-2.11) 95.0 (42.82-2.11)	Depositor EDS
R_{merge}	0.07	Depositor
R_{sym}	(Not available)	Depositor
$\langle I/\sigma(I) \rangle$ ¹	3.61 (at 2.10Å)	Xtrriage
Refinement program	REFMAC 5.2.0019	Depositor
R, R_{free}	0.169 , 0.230 0.171 , 0.233	Depositor DCC
R_{free} test set	1159 reflections (5.10%)	wwPDB-VP
Wilson B-factor (Å ²)	25.9	Xtrriage
Anisotropy	0.021	Xtrriage
Bulk solvent k_{sol} (e/Å ³), B_{sol} (Å ²)	0.34 , 23.0	EDS
L-test for twinning ²	$\langle L \rangle = 0.52$, $\langle L^2 \rangle = 0.36$	Xtrriage
Estimated twinning fraction	0.479 for h,-k,-l	Xtrriage
F_o, F_c correlation	0.96	EDS
Total number of atoms	4051	wwPDB-VP
Average B, all atoms (Å ²)	25.0	wwPDB-VP

Xtrriage's analysis on translational NCS is as follows: *The largest off-origin peak in the Patterson function is 8.31% of the height of the origin peak. No significant pseudotranslation is detected.*

¹Intensities estimated from amplitudes.

²Theoretical values of $\langle |L| \rangle$, $\langle L^2 \rangle$ for acentric reflections are 0.5, 0.333 respectively for untwinned datasets, and 0.375, 0.2 for perfectly twinned datasets.

5 Model quality [i](#)

5.1 Standard geometry [i](#)

Bond lengths and bond angles in the following residue types are not validated in this section: 53V, NDP

The Z score for a bond length (or angle) is the number of standard deviations the observed value is removed from the expected value. A bond length (or angle) with $|Z| > 5$ is considered an outlier worth inspection. RMSZ is the root-mean-square of all Z scores of the bond lengths (or angles).

Mol	Chain	Bond lengths		Bond angles	
		RMSZ	# Z >5	RMSZ	# Z >5
1	A	1.07	1/1891 (0.1%)	1.04	9/2556 (0.4%)
1	B	1.08	1/1891 (0.1%)	1.12	17/2556 (0.7%)
All	All	1.08	2/3782 (0.1%)	1.08	26/5112 (0.5%)

Chiral center outliers are detected by calculating the chiral volume of a chiral center and verifying if the center is modelled as a planar moiety or with the opposite hand. A planarity outlier is detected by checking planarity of atoms in a peptide group, atoms in a mainchain group or atoms of a sidechain that are expected to be planar.

Mol	Chain	#Chirality outliers	#Planarity outliers
1	A	0	8
1	B	0	17
All	All	0	25

All (2) bond length outliers are listed below:

Mol	Chain	Res	Type	Atoms	Z	Observed(Å)	Ideal(Å)
1	A	7	VAL	CB-CG1	5.97	1.65	1.52
1	B	7	VAL	CB-CG1	5.44	1.64	1.52

All (26) bond angle outliers are listed below:

Mol	Chain	Res	Type	Atoms	Z	Observed(°)	Ideal(°)
1	B	102	LEU	N-CA-C	-7.78	90.01	111.00
1	B	106	GLN	N-CA-C	7.75	131.94	111.00
1	A	84	GLU	N-CA-C	7.60	131.52	111.00
1	B	47	SER	N-CA-C	7.34	130.83	111.00
1	B	84	GLU	N-CA-C	-6.73	92.84	111.00
1	A	72	ARG	NE-CZ-NH1	6.61	123.60	120.30
1	A	188	THR	N-CA-CB	6.49	122.63	110.30

Continued on next page...

Continued from previous page...

Mol	Chain	Res	Type	Atoms	Z	Observed(°)	Ideal(°)
1	A	116	GLU	N-CA-C	6.07	127.40	111.00
1	B	193	ASN	N-CA-C	5.96	127.09	111.00
1	B	188	THR	N-CA-CB	5.95	121.61	110.30
1	A	164	GLN	N-CA-C	5.92	126.97	111.00
1	B	187	LEU	N-CA-C	-5.85	95.22	111.00
1	A	154	ASP	CB-CG-OD2	-5.80	113.08	118.30
1	B	186	ARG	N-CA-CB	-5.76	100.23	110.60
1	B	116	GLU	N-CA-C	5.75	126.53	111.00
1	B	196	LEU	CA-CB-CG	5.72	128.45	115.30
1	B	72	ARG	NE-CZ-NH1	5.71	123.15	120.30
1	B	199	GLY	N-CA-C	-5.55	99.22	113.10
1	A	115	ILE	N-CA-C	-5.41	96.40	111.00
1	B	145	LEU	CA-CB-CG	5.33	127.56	115.30
1	B	79	ARG	NE-CZ-NH1	-5.29	117.65	120.30
1	B	112	GLU	N-CA-C	-5.26	96.81	111.00
1	B	86	ARG	NE-CZ-NH2	5.24	122.92	120.30
1	A	138	LEU	CA-CB-CG	5.08	126.99	115.30
1	A	224	HIS	N-CA-C	5.08	124.70	111.00
1	B	101	CYS	CB-CA-C	5.02	120.45	110.40

There are no chirality outliers.

All (25) planarity outliers are listed below:

Mol	Chain	Res	Type	Group
1	A	115	ILE	Peptide
1	A	153	MET	Peptide
1	A	161	GLU	Peptide
1	A	163	GLU	Peptide
1	A	187	LEU	Peptide
1	A	201	PRO	Peptide
1	A	223	HIS	Peptide
1	A	83	GLY	Peptide
1	B	101	CYS	Peptide
1	B	105	LEU	Peptide
1	B	111	ASN	Peptide
1	B	115	ILE	Peptide
1	B	148	THR	Peptide
1	B	185	GLY	Peptide
1	B	186	ARG	Peptide
1	B	187	LEU	Peptide
1	B	193	ASN	Peptide
1	B	197	VAL	Peptide

Continued on next page...

Continued from previous page...

Mol	Chain	Res	Type	Group
1	B	199	GLY	Peptide
1	B	200	LEU	Peptide,Mainchain
1	B	46	ASN	Peptide
1	B	81	PHE	Peptide
1	B	83	GLY	Peptide
1	B	98	LEU	Peptide

5.2 Too-close contacts [i](#)

In the following table, the Non-H and H(model) columns list the number of non-hydrogen atoms and hydrogen atoms in the chain respectively. The H(added) column lists the number of hydrogen atoms added and optimized by MolProbity. The Clashes column lists the number of clashes within the asymmetric unit, whereas Symm-Clashes lists symmetry-related clashes.

Mol	Chain	Non-H	H(model)	H(added)	Clashes	Symm-Clashes
1	A	1846	0	1846	41	1
1	B	1846	0	1846	42	1
2	A	48	0	26	0	0
2	B	48	0	26	1	0
3	A	29	0	26	8	0
3	B	29	0	26	9	0
4	A	106	0	0	7	1
4	B	99	0	0	8	1
All	All	4051	0	3796	94	2

The all-atom clashscore is defined as the number of clashes found per 1000 atoms (including hydrogen atoms). The all-atom clashscore for this structure is 12.

All (94) close contacts within the same asymmetric unit are listed below, sorted by their clash magnitude.

Atom-1	Atom-2	Interatomic distance (Å)	Clash overlap (Å)
1:A:190:GLN:HG2	4:A:326:HOH:O	1.10	1.22
1:A:183:LEU:HD22	1:A:200:LEU:HD13	1.35	1.07
3:B:229:53V:C17	3:B:229:53V:H26	1.86	1.04
1:B:161:GLU:HG3	1:B:165:ARG:HH12	1.24	1.02
1:B:79:ARG:NH1	4:B:324:HOH:O	1.95	1.00
1:A:227:HIS:CD2	4:A:287:HOH:O	2.15	0.99
3:B:229:53V:H26	3:B:229:53V:H17	1.57	0.84
1:A:183:LEU:HD22	1:A:200:LEU:CD1	2.07	0.82
3:B:229:53V:H17	3:B:229:53V:C26	2.07	0.82

Continued on next page...

Continued from previous page...

Atom-1	Atom-2	Interatomic distance (Å)	Clash overlap (Å)
1:B:161:GLU:HG3	1:B:165:ARG:NH1	1.96	0.81
3:B:229:53V:C17	3:B:229:53V:C26	2.58	0.81
1:B:79:ARG:HH11	1:B:79:ARG:HG3	1.51	0.74
1:A:28:ARG:NH1	4:A:334:HOH:O	2.19	0.74
1:B:79:ARG:HH11	1:B:79:ARG:CG	2.01	0.73
1:A:28:ARG:HH22	1:A:33:MET:HB2	1.54	0.71
1:A:31:LYS:HB2	1:A:204:GLU:OE1	1.92	0.70
1:B:190:GLN:HG2	4:B:302:HOH:O	1.90	0.70
1:A:183:LEU:CD2	1:A:200:LEU:HD13	2.19	0.69
3:A:229:53V:C17	3:A:229:53V:H26	2.23	0.69
1:B:220:HIS:HD2	4:B:277:HOH:O	1.75	0.69
1:A:61:SER:OG	3:A:229:53V:C2	2.41	0.69
1:A:3:LYS:O	1:A:3:LYS:HE2	1.94	0.67
1:A:220:HIS:HD2	4:A:250:HOH:O	1.76	0.66
1:B:220:HIS:CD2	4:B:277:HOH:O	2.49	0.66
3:A:229:53V:C19	3:A:229:53V:H27	2.29	0.62
3:A:229:53V:H26	3:A:229:53V:H17	1.81	0.61
1:B:69:LEU:H	1:B:74:ASN:HD21	1.49	0.60
1:A:108:SER:HA	1:A:111:ASN:ND2	2.17	0.59
1:A:28:ARG:NH2	1:A:33:MET:HB2	2.17	0.59
1:A:183:LEU:CD2	1:A:200:LEU:CD1	2.78	0.59
1:A:28:ARG:HH22	1:A:33:MET:CB	2.16	0.58
1:B:48:LYS:HG2	1:B:114:LYS:HE3	1.86	0.58
1:A:111:ASN:ND2	1:A:113:ASN:H	2.03	0.56
1:A:111:ASN:HD22	1:A:111:ASN:C	2.08	0.56
1:B:108:SER:HB2	1:B:113:ASN:HD21	1.70	0.56
1:A:61:SER:OG	3:A:229:53V:O17	2.22	0.55
1:A:227:HIS:HD2	4:A:287:HOH:O	1.64	0.55
1:A:111:ASN:HD22	1:A:112:GLU:N	2.06	0.54
3:A:229:53V:H27	3:A:229:53V:H19	1.90	0.54
1:B:61:SER:OG	3:B:229:53V:C2	2.56	0.54
1:B:186:ARG:HA	1:B:200:LEU:CD2	2.39	0.52
3:B:229:53V:C19	3:B:229:53V:H27	2.40	0.52
1:B:79:ARG:HG3	4:B:276:HOH:O	2.09	0.52
1:A:81:PHE:CD2	1:A:94:HIS:HB3	2.44	0.52
1:A:136:HIS:HE1	4:A:309:HOH:O	1.93	0.52
1:A:178:PRO:HG3	4:A:246:HOH:O	2.10	0.51
1:B:65:LYS:HD3	4:B:303:HOH:O	2.09	0.51
1:B:108:SER:HA	1:B:111:ASN:OD1	2.10	0.51
3:A:229:53V:H17	3:A:229:53V:C26	2.40	0.51
1:B:84:GLU:CG	1:B:100:ASN:HB3	2.41	0.51

Continued on next page...

Continued from previous page...

Atom-1	Atom-2	Interatomic distance (Å)	Clash overlap (Å)
1:B:178:PRO:HG2	1:B:181:ILE:HD11	1.93	0.51
1:A:222:HIS:HE1	4:B:247:HOH:O	1.93	0.50
1:B:108:SER:HB2	1:B:113:ASN:ND2	2.26	0.50
1:A:108:SER:HA	1:A:111:ASN:HD21	1.75	0.49
1:B:61:SER:OG	3:B:229:53V:O17	2.24	0.49
1:B:183:LEU:HG	1:B:200:LEU:HD13	1.95	0.49
1:B:204:GLU:OE2	1:B:205:LYS:NZ	2.46	0.48
1:B:143:MET:HG2	1:B:192:TRP:CD2	2.48	0.48
1:B:63:PRO:HB2	1:B:66:PHE:HD1	1.78	0.48
1:B:27:TRP:CZ2	1:B:142:ILE:HD12	2.49	0.47
1:A:28:ARG:HA	1:A:28:ARG:HE	1.79	0.47
1:A:189:SER:HB3	1:A:196:LEU:HD21	1.96	0.47
1:A:7:VAL:HG11	1:A:138:LEU:HD22	1.97	0.47
3:A:229:53V:C17	3:A:229:53V:C26	2.93	0.47
1:B:202:VAL:HG12	1:B:203:GLN:N	2.30	0.47
1:B:84:GLU:HG3	1:B:100:ASN:HB3	1.96	0.46
1:B:61:SER:HG	3:B:229:53V:C2	2.27	0.46
1:A:158:GLN:HB3	1:A:161:GLU:OE1	2.15	0.46
1:B:198:LYS:O	1:B:212:THR:HG22	2.15	0.45
1:B:3:LYS:O	1:B:3:LYS:HG3	2.16	0.45
1:B:19:ILE:O	2:B:228:NDP:H2N	2.16	0.45
1:B:161:GLU:CG	1:B:165:ARG:NH1	2.73	0.45
1:B:78:SER:HB3	1:B:81:PHE:CD2	2.52	0.45
1:B:204:GLU:HG2	1:B:205:LYS:HG3	1.99	0.44
3:B:229:53V:H27	3:B:229:53V:H19	2.00	0.44
1:A:198:LYS:O	1:A:212:THR:HG22	2.17	0.44
1:B:178:PRO:HG2	1:B:181:ILE:CD1	2.47	0.44
1:A:164:GLN:NE2	1:B:219:GLU:OE2	2.51	0.44
1:A:78:SER:O	1:A:96:ASN:HA	2.17	0.44
1:A:165:ARG:O	1:A:216:LYS:HE2	2.18	0.43
1:A:205:LYS:HB3	1:A:206:GLY:H	1.48	0.43
1:B:52:VAL:HB	1:B:121:ILE:HD13	2.00	0.43
1:B:79:ARG:NH1	1:B:79:ARG:CG	2.71	0.43
1:B:98:LEU:HD22	1:B:102:LEU:HD22	2.02	0.42
1:A:114:LYS:HD2	1:A:114:LYS:HA	1.88	0.41
1:A:21:PHE:HB2	1:A:153:MET:HA	2.03	0.41
1:B:165:ARG:HG3	1:B:165:ARG:HH11	1.85	0.41
1:A:78:SER:HB3	1:A:81:PHE:CG	2.56	0.41
1:A:84:GLU:O	1:A:85:LEU:HB2	2.21	0.41
1:B:42:LEU:HD12	1:B:181:ILE:HG12	2.03	0.41
1:A:28:ARG:HA	1:A:28:ARG:NE	2.35	0.41

Continued on next page...

Continued from previous page...

Atom-1	Atom-2	Interatomic distance (Å)	Clash overlap (Å)
1:A:63:PRO:HB2	1:A:66:PHE:HD2	1.87	0.40
1:A:138:LEU:HD13	1:A:213:LEU:HD13	2.04	0.40
1:B:65:LYS:CD	4:B:303:HOH:O	2.68	0.40

All (2) symmetry-related close contacts are listed below. The label for Atom-2 includes the symmetry operator and encoded unit-cell translations to be applied.

Atom-1	Atom-2	Interatomic distance (Å)	Clash overlap (Å)
1:A:65:LYS:CD	4:B:272:HOH:O[4_564]	2.05	0.15
1:B:86:ARG:NH2	4:A:309:HOH:O[1_565]	2.05	0.15

5.3 Torsion angles [i](#)

5.3.1 Protein backbone [i](#)

In the following table, the Percentiles column shows the percent Ramachandran outliers of the chain as a percentile score with respect to all X-ray entries followed by that with respect to entries of similar resolution.

The Analysed column shows the number of residues for which the backbone conformation was analysed, and the total number of residues.

Mol	Chain	Analysed	Favoured	Allowed	Outliers	Percentiles	
1	A	223/227 (98%)	212 (95%)	9 (4%)	2 (1%)	17	12
1	B	223/227 (98%)	213 (96%)	7 (3%)	3 (1%)	12	7
All	All	446/454 (98%)	425 (95%)	16 (4%)	5 (1%)	14	9

All (5) Ramachandran outliers are listed below:

Mol	Chain	Res	Type
1	A	84	GLU
1	B	47	SER
1	A	162	LEU
1	B	149	THR
1	B	106	GLN

5.3.2 Protein sidechains [i](#)

In the following table, the Percentiles column shows the percent sidechain outliers of the chain as a percentile score with respect to all X-ray entries followed by that with respect to entries of similar resolution.

The Analysed column shows the number of residues for which the sidechain conformation was analysed, and the total number of residues.

Mol	Chain	Analysed	Rotameric	Outliers	Percentiles	
1	A	205/207 (99%)	190 (93%)	15 (7%)	14	10
1	B	205/207 (99%)	192 (94%)	13 (6%)	18	14
All	All	410/414 (99%)	382 (93%)	28 (7%)	16	12

All (28) residues with a non-rotameric sidechain are listed below:

Mol	Chain	Res	Type
1	A	3	LYS
1	A	28	ARG
1	A	84	GLU
1	A	98	LEU
1	A	101	CYS
1	A	107	SER
1	A	111	ASN
1	A	133	LEU
1	A	138	LEU
1	A	177	LEU
1	A	184	GLU
1	A	196	LEU
1	A	205	LYS
1	A	216	LYS
1	A	219	GLU
1	B	3	LYS
1	B	28	ARG
1	B	79	ARG
1	B	80	SER
1	B	98	LEU
1	B	101	CYS
1	B	102	LEU
1	B	133	LEU
1	B	145	LEU
1	B	172	LYS
1	B	186	ARG
1	B	196	LEU

Continued on next page...

Continued from previous page...

Mol	Chain	Res	Type
1	B	218	LEU

Sometimes sidechains can be flipped to improve hydrogen bonding and reduce clashes. All (11) such sidechains are listed below:

Mol	Chain	Res	Type
1	A	111	ASN
1	A	136	HIS
1	A	193	ASN
1	A	203	GLN
1	A	208	GLN
1	A	222	HIS
1	A	227	HIS
1	B	74	ASN
1	B	113	ASN
1	B	136	HIS
1	B	220	HIS

5.3.3 RNA [i](#)

There are no RNA molecules in this entry.

5.4 Non-standard residues in protein, DNA, RNA chains [i](#)

There are no non-standard protein/DNA/RNA residues in this entry.

5.5 Carbohydrates [i](#)

There are no monosaccharides in this entry.

5.6 Ligand geometry [i](#)

4 ligands are modelled in this entry.

In the following table, the Counts columns list the number of bonds (or angles) for which Mogul statistics could be retrieved, the number of bonds (or angles) that are observed in the model and the number of bonds (or angles) that are defined in the Chemical Component Dictionary. The Link column lists molecule types, if any, to which the group is linked. The Z score for a bond length (or angle) is the number of standard deviations the observed value is removed from the expected value. A bond length (or angle) with $|Z| > 2$ is considered an outlier worth inspection. RMSZ is the root-mean-square of all Z scores of the bond lengths (or angles).

Mol	Type	Chain	Res	Link	Bond lengths			Bond angles		
					Counts	RMSZ	# Z > 2	Counts	RMSZ	# Z > 2
3	53V	A	229	-	28,31,31	1.41	4 (14%)	35,44,44	2.28	14 (40%)
2	NDP	B	228	-	45,52,52	1.62	7 (15%)	53,80,80	1.68	11 (20%)
3	53V	B	229	-	28,31,31	1.48	4 (14%)	35,44,44	2.30	15 (42%)
2	NDP	A	228	-	45,52,52	1.71	6 (13%)	53,80,80	1.74	8 (15%)

In the following table, the Chirals column lists the number of chiral outliers, the number of chiral centers analysed, the number of these observed in the model and the number defined in the Chemical Component Dictionary. Similar counts are reported in the Torsion and Rings columns. '-' means no outliers of that kind were identified.

Mol	Type	Chain	Res	Link	Chirals	Torsions	Rings
3	53V	A	229	-	-	3/8/15/15	0/3/3/3
2	NDP	B	228	-	-	2/30/77/77	0/5/5/5
3	53V	B	229	-	-	3/8/15/15	0/3/3/3
2	NDP	A	228	-	-	2/30/77/77	0/5/5/5

All (21) bond length outliers are listed below:

Mol	Chain	Res	Type	Atoms	Z	Observed(Å)	Ideal(Å)
2	A	228	NDP	O7N-C7N	5.65	1.37	1.24
2	B	228	NDP	O7N-C7N	5.33	1.37	1.24
2	A	228	NDP	C6N-C5N	5.14	1.42	1.33
3	A	229	53V	O17-C2	4.33	1.55	1.42
3	B	229	53V	C8-C5	4.21	1.57	1.50
2	B	228	NDP	C6N-C5N	4.03	1.40	1.33
2	A	228	NDP	C2A-N3A	4.03	1.38	1.32
2	B	228	NDP	C4N-C3N	-3.63	1.42	1.49
2	B	228	NDP	C2A-N3A	3.55	1.37	1.32
2	A	228	NDP	C4N-C3N	-3.04	1.43	1.49
3	B	229	53V	O17-C2	2.96	1.51	1.42
2	B	228	NDP	C4N-C5N	-2.92	1.41	1.48
3	A	229	53V	C8-C5	2.59	1.54	1.50
3	A	229	53V	C17-C16	2.57	1.41	1.37
2	B	228	NDP	P2B-O2B	2.42	1.63	1.59
3	B	229	53V	C17-C16	2.37	1.41	1.37
2	A	228	NDP	C4N-C5N	-2.33	1.42	1.48
3	A	229	53V	C26-C20	2.33	1.55	1.51
2	A	228	NDP	C2A-N1A	2.31	1.38	1.33
3	B	229	53V	C19-C14	2.01	1.41	1.37
2	B	228	NDP	C2A-N1A	2.00	1.37	1.33

All (48) bond angle outliers are listed below:

Mol	Chain	Res	Type	Atoms	Z	Observed(°)	Ideal(°)
2	A	228	NDP	N3A-C2A-N1A	-7.38	117.14	128.68
3	B	229	53V	C3-N4-C5	6.49	122.08	116.79
3	A	229	53V	C3-N4-C5	6.08	121.74	116.79
2	B	228	NDP	N3A-C2A-N1A	-5.86	119.52	128.68
3	A	229	53V	C3-N2-C1	4.28	121.71	116.99
2	A	228	NDP	C3N-C7N-N7N	4.23	125.17	117.67
3	B	229	53V	C21-C20-C25	4.22	121.93	118.49
2	B	228	NDP	C3N-C7N-N7N	4.19	125.10	117.67
3	A	229	53V	C21-C20-C25	3.91	121.67	118.49
3	B	229	53V	C17-C16-C15	-3.80	116.55	121.12
3	A	229	53V	C23-C24-C25	3.66	121.47	118.49
2	A	228	NDP	C1D-N1N-C2N	-3.50	115.29	121.11
3	A	229	53V	C13-C12-C11	3.49	117.72	111.00
3	B	229	53V	C3-N2-C1	3.48	120.83	116.99
3	B	229	53V	C19-C14-C15	3.42	122.96	118.09
2	A	228	NDP	O4D-C1D-N1N	3.32	114.55	108.06
2	B	228	NDP	C5A-C6A-N6A	3.26	125.30	120.35
2	A	228	NDP	C2A-N1A-C6A	3.19	124.21	118.75
3	B	229	53V	C14-C19-C18	-3.18	116.74	121.48
3	A	229	53V	C20-C25-C24	-3.09	116.28	121.66
2	A	228	NDP	O7N-C7N-C3N	-3.04	115.17	120.90
2	B	228	NDP	O2B-C2B-C1B	-3.01	99.27	110.10
3	A	229	53V	C27-C24-C23	-2.87	112.87	120.19
3	B	229	53V	C20-C25-C24	-2.86	116.68	121.66
2	B	228	NDP	O7N-C7N-C3N	-2.84	115.56	120.90
3	A	229	53V	C26-C20-C21	-2.78	113.11	120.19
2	B	228	NDP	O4D-C1D-N1N	2.75	113.43	108.06
3	A	229	53V	N2-C3-N4	-2.74	121.12	125.42
3	A	229	53V	C6-C1-N2	-2.72	117.78	121.63
2	B	228	NDP	O4D-C1D-C2D	-2.68	100.80	106.64
3	B	229	53V	N9-C1-N2	2.67	120.80	117.03
3	B	229	53V	C6-C1-N2	-2.65	117.89	121.63
2	B	228	NDP	C4A-C5A-N7A	-2.57	106.72	109.40
2	B	228	NDP	C2A-N1A-C6A	2.54	123.11	118.75
3	B	229	53V	C13-C12-C11	2.53	115.88	111.00
2	B	228	NDP	O3X-P2B-O1X	2.50	120.46	110.68
3	A	229	53V	C19-C14-C15	2.44	121.57	118.09
3	B	229	53V	C16-C17-C18	2.37	123.13	119.70
3	B	229	53V	C23-C24-C25	2.37	120.42	118.49
3	A	229	53V	C17-C16-C15	-2.36	118.28	121.12
3	A	229	53V	C1-C6-C10	2.32	122.58	118.57
3	B	229	53V	N2-C3-N4	-2.26	121.87	125.42

Continued on next page...

Continued from previous page...

Mol	Chain	Res	Type	Atoms	Z	Observed(°)	Ideal(°)
2	A	228	NDP	O3X-P2B-O1X	2.25	119.48	110.68
2	A	228	NDP	C5A-C6A-N6A	2.21	123.70	120.35
3	A	229	53V	N7-C3-N2	2.19	120.66	117.25
2	B	228	NDP	O3D-C3D-C2D	-2.16	104.82	111.82
3	B	229	53V	N7-C3-N2	2.08	120.48	117.25
3	B	229	53V	C23-C22-C21	-2.01	117.39	120.25

There are no chirality outliers.

All (10) torsion outliers are listed below:

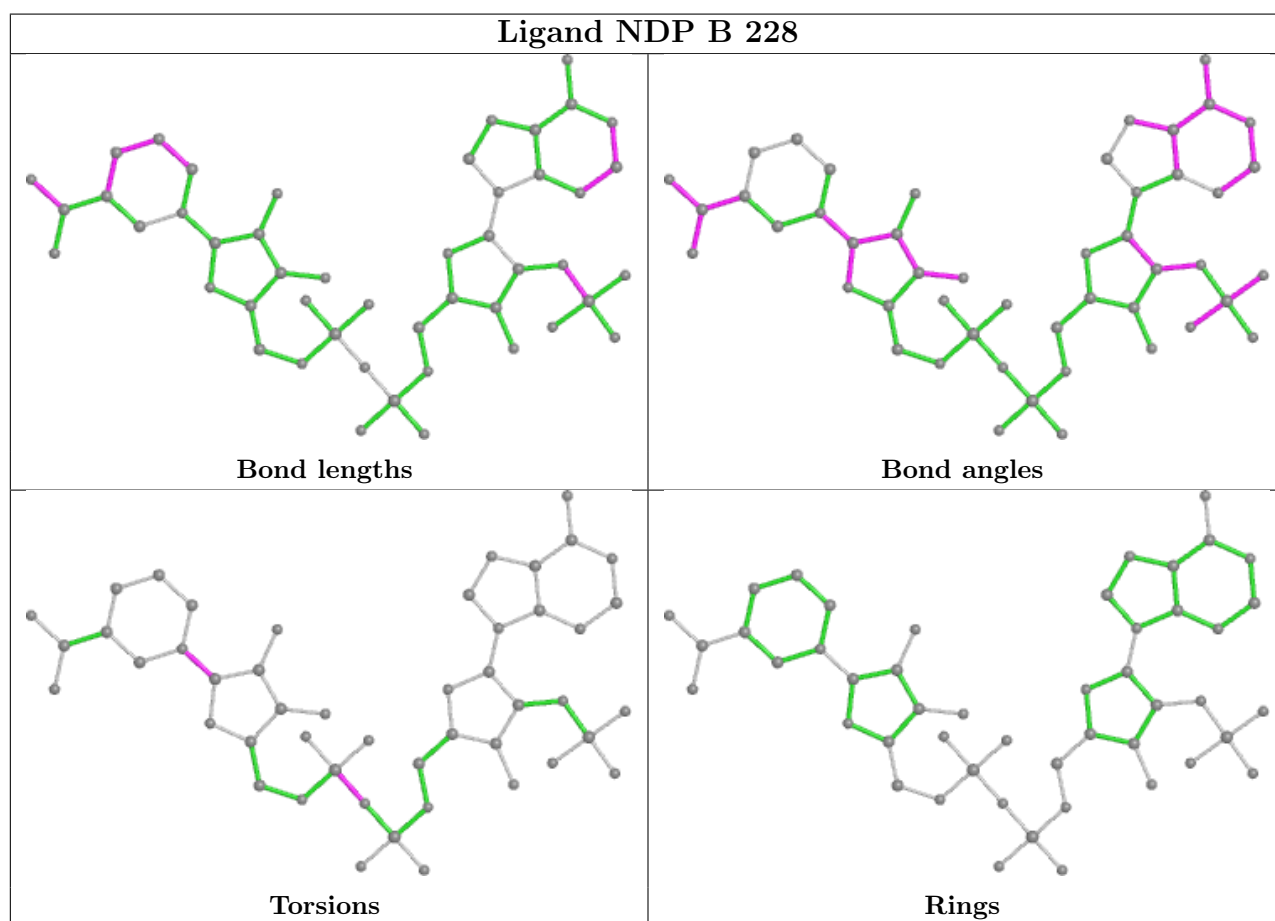
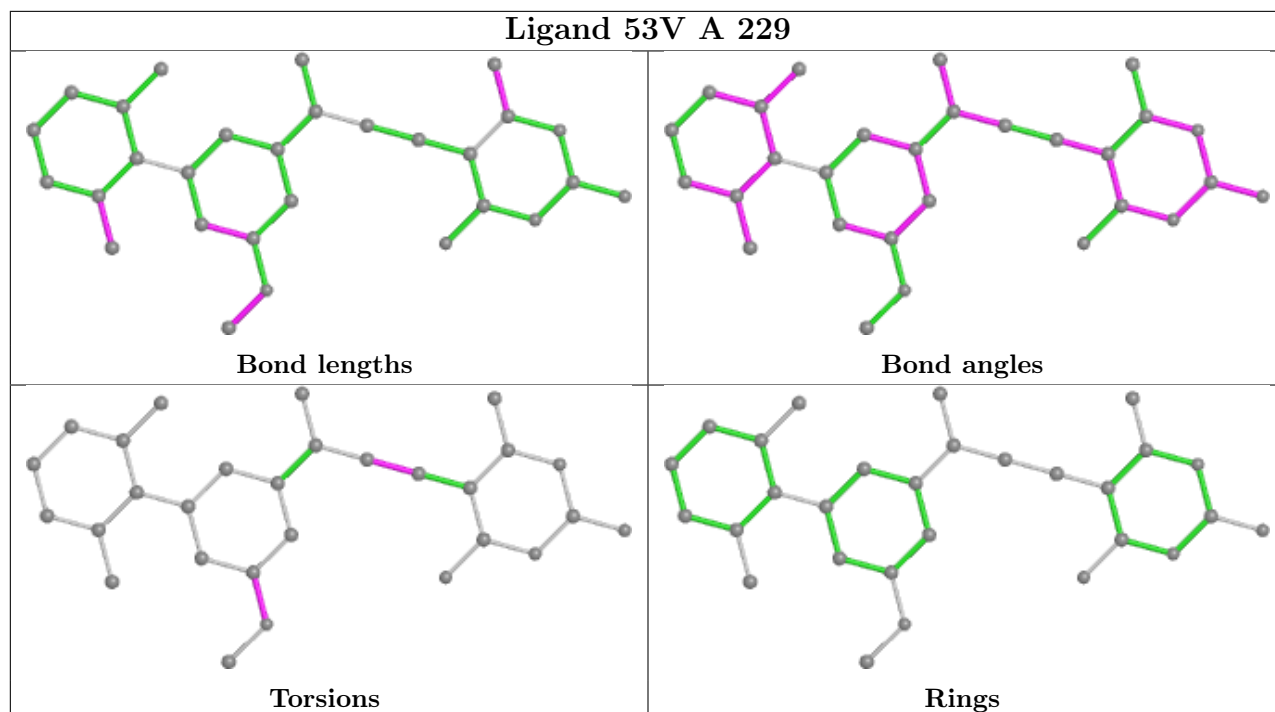
Mol	Chain	Res	Type	Atoms
2	A	228	NDP	PA-O3-PN-O5D
3	A	229	53V	C6-C10-C11-C12
3	B	229	53V	C17-C16-O17-C2
3	B	229	53V	C15-C16-O17-C2
3	A	229	53V	C17-C16-O17-C2
3	A	229	53V	C15-C16-O17-C2
2	B	228	NDP	PA-O3-PN-O5D
2	B	228	NDP	O4D-C1D-N1N-C2N
2	A	228	NDP	O4D-C1D-N1N-C2N
3	B	229	53V	C11-C10-C6-C5

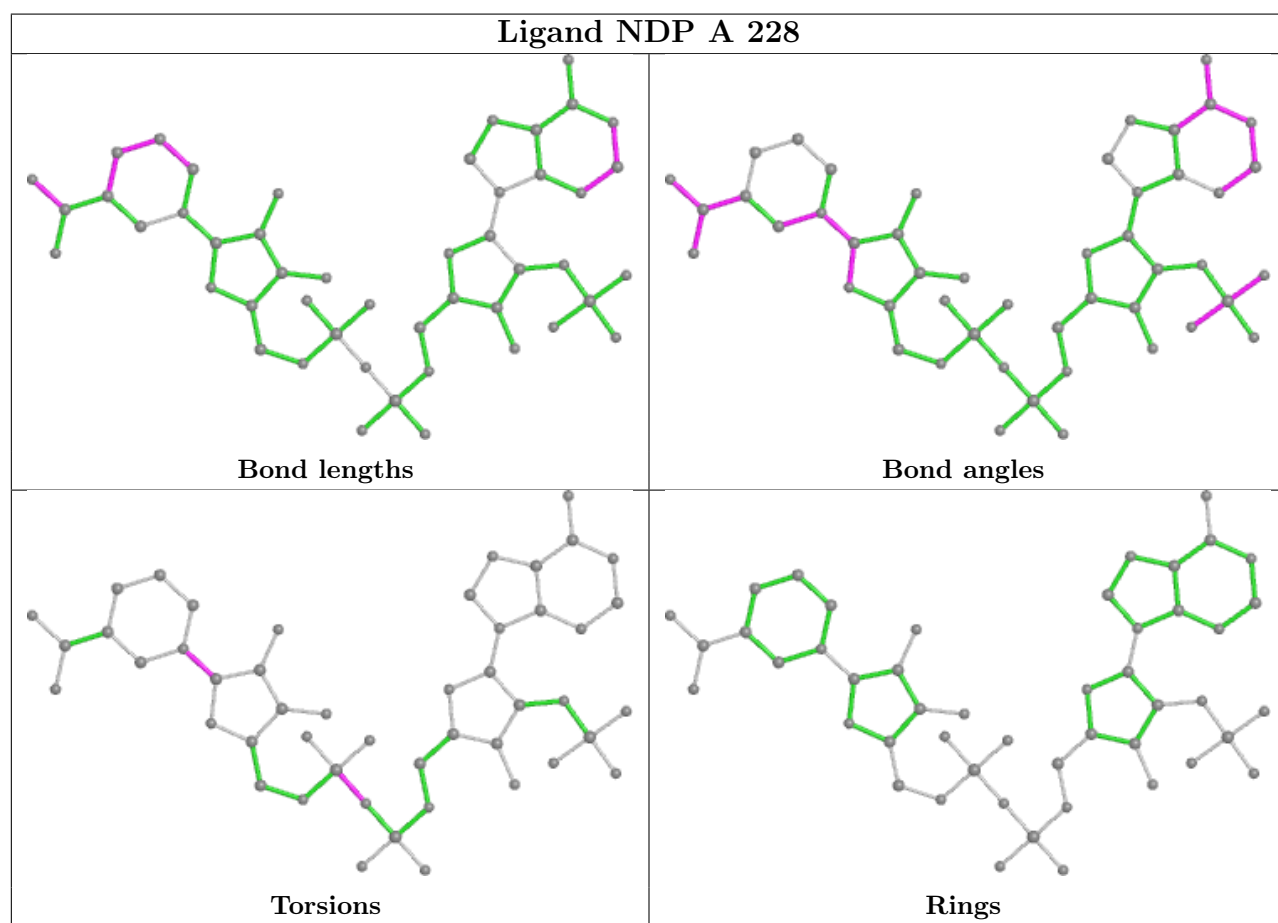
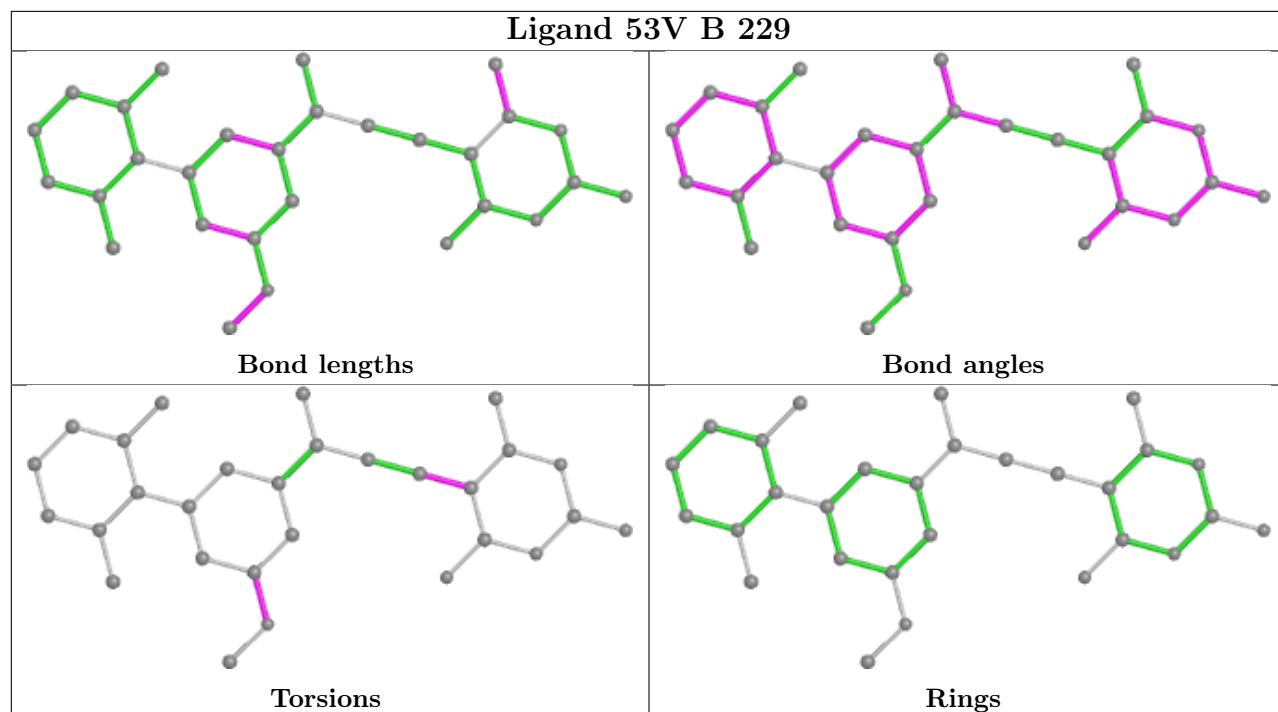
There are no ring outliers.

3 monomers are involved in 18 short contacts:

Mol	Chain	Res	Type	Clashes	Symm-Clashes
3	A	229	53V	8	0
2	B	228	NDP	1	0
3	B	229	53V	9	0

The following is a two-dimensional graphical depiction of Mogul quality analysis of bond lengths, bond angles, torsion angles, and ring geometry for all instances of the Ligand of Interest. In addition, ligands with molecular weight > 250 and outliers as shown on the validation Tables will also be included. For torsion angles, if less than 5% of the Mogul distribution of torsion angles is within 10 degrees of the torsion angle in question, then that torsion angle is considered an outlier. Any bond that is central to one or more torsion angles identified as an outlier by Mogul will be highlighted in the graph. For rings, the root-mean-square deviation (RMSD) between the ring in question and similar rings identified by Mogul is calculated over all ring torsion angles. If the average RMSD is greater than 60 degrees and the minimal RMSD between the ring in question and any Mogul-identified rings is also greater than 60 degrees, then that ring is considered an outlier. The outliers are highlighted in purple. The color gray indicates Mogul did not find sufficient equivalents in the CSD to analyse the geometry.





5.7 Other polymers [i](#)

There are no such residues in this entry.

5.8 Polymer linkage issues [i](#)

There are no chain breaks in this entry.

6 Fit of model and data [i](#)

6.1 Protein, DNA and RNA chains [i](#)

In the following table, the column labelled ‘#RSRZ> 2’ contains the number (and percentage) of RSRZ outliers, followed by percent RSRZ outliers for the chain as percentile scores relative to all X-ray entries and entries of similar resolution. The OWAB column contains the minimum, median, 95th percentile and maximum values of the occupancy-weighted average B-factor per residue. The column labelled ‘Q< 0.9’ lists the number of (and percentage) of residues with an average occupancy less than 0.9.

Mol	Chain	Analysed	<RSRZ>	#RSRZ>2	OWAB(Å ²)	Q<0.9
1	A	225/227 (99%)	-0.45	0 100 100	14, 24, 39, 49	1 (0%)
1	B	225/227 (99%)	-0.46	1 (0%) 92 93	15, 24, 38, 52	0
All	All	450/454 (99%)	-0.45	1 (0%) 95 95	14, 24, 39, 52	1 (0%)

All (1) RSRZ outliers are listed below:

Mol	Chain	Res	Type	RSRZ
1	B	227	HIS	2.4

6.2 Non-standard residues in protein, DNA, RNA chains [i](#)

There are no non-standard protein/DNA/RNA residues in this entry.

6.3 Carbohydrates [i](#)

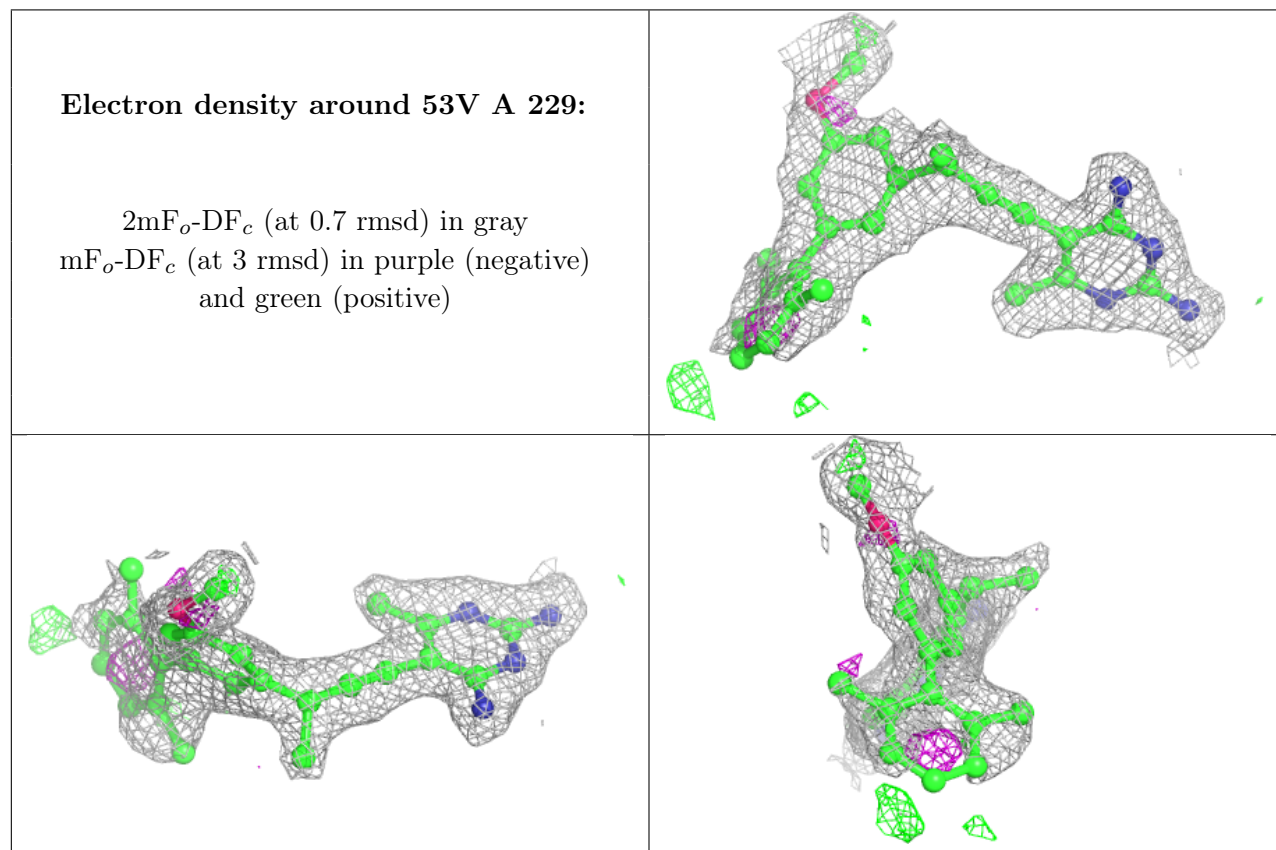
There are no monosaccharides in this entry.

6.4 Ligands [i](#)

In the following table, the Atoms column lists the number of modelled atoms in the group and the number defined in the chemical component dictionary. The B-factors column lists the minimum, median, 95th percentile and maximum values of B factors of atoms in the group. The column labelled ‘Q< 0.9’ lists the number of atoms with occupancy less than 0.9.

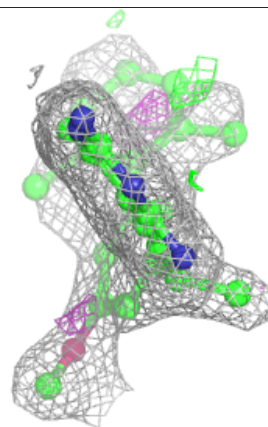
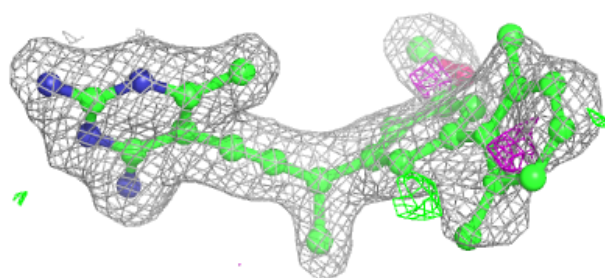
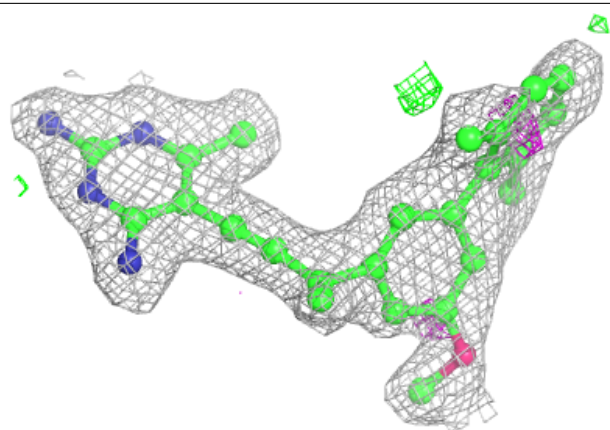
Mol	Type	Chain	Res	Atoms	RSCC	RSR	B-factors(Å ²)	Q<0.9
3	53V	A	229	29/29	0.90	0.17	15,28,41,43	0
3	53V	B	229	29/29	0.92	0.14	13,27,38,39	0
2	NDP	B	228	48/48	0.97	0.09	12,19,22,25	0
2	NDP	A	228	48/48	0.98	0.07	13,19,22,24	0

The following is a graphical depiction of the model fit to experimental electron density of all instances of the Ligand of Interest. In addition, ligands with molecular weight > 250 and outliers as shown on the geometry validation Tables will also be included. Each fit is shown from different orientation to approximate a three-dimensional view.

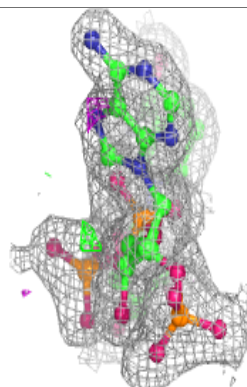
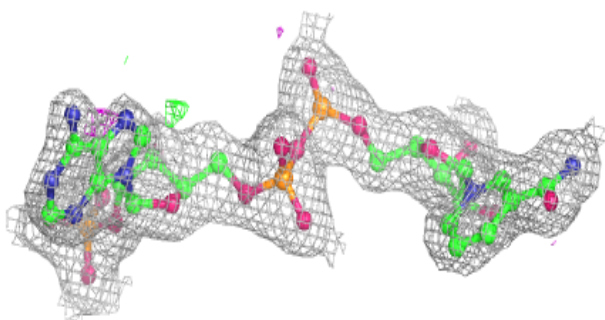
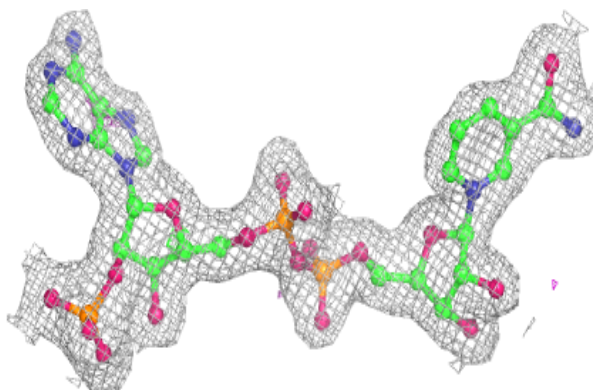


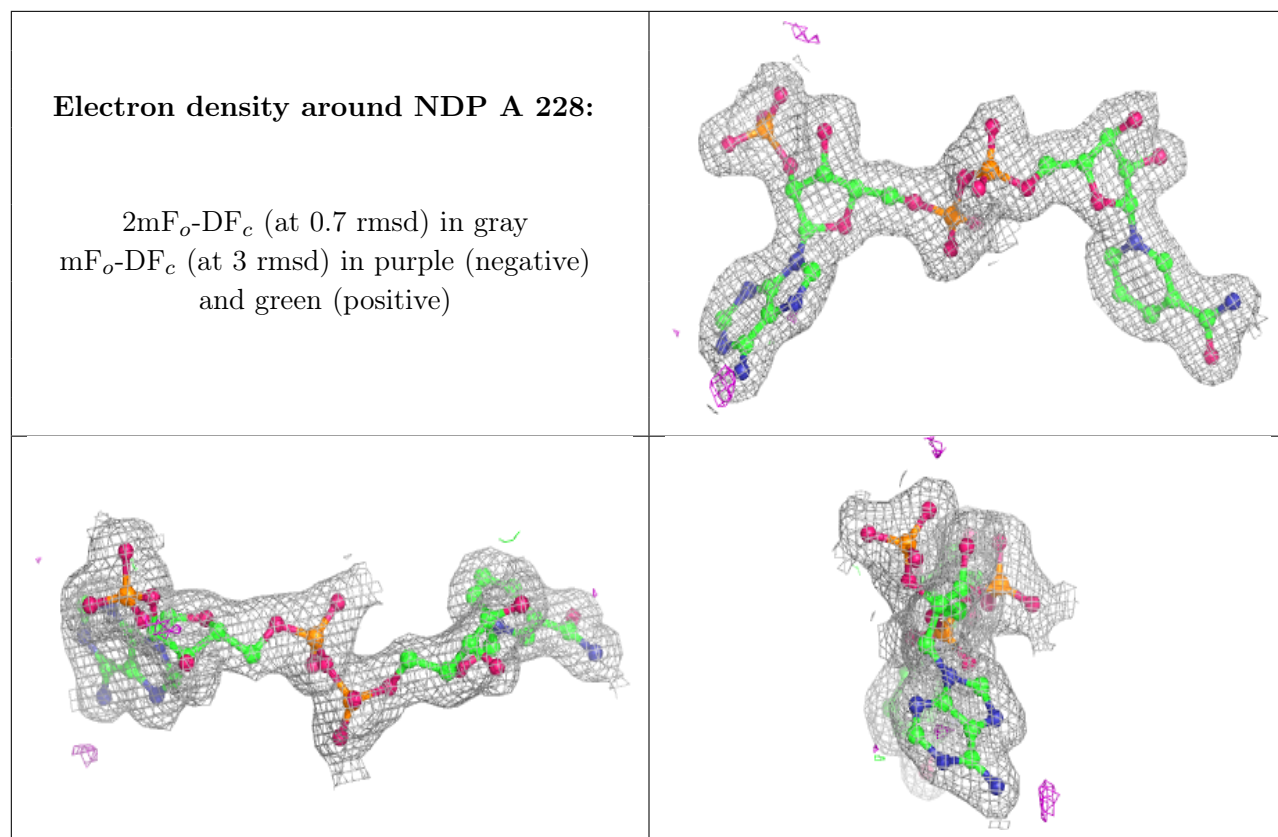
Electron density around 53V B 229:

$2mF_o-DF_c$ (at 0.7 rmsd) in gray
 mF_o-DF_c (at 3 rmsd) in purple (negative)
and green (positive)

**Electron density around NDP B 228:**

$2mF_o-DF_c$ (at 0.7 rmsd) in gray
 mF_o-DF_c (at 3 rmsd) in purple (negative)
and green (positive)





6.5 Other polymers [i](#)

There are no such residues in this entry.