



Full wwPDB X-ray Structure Validation Report ⓘ

Nov 5, 2023 – 10:08 PM EST

PDB ID : 1EBU
Title : HOMOSERINE DEHYDROGENASE COMPLEX WITH NAD ANALOGUE
AND L-HOMOSERINE
Authors : DeLaBarre, B.; Thompson, P.R.; Wright, G.D.; Berghuis, A.M.
Deposited on : 2000-01-24
Resolution : 2.60 Å(reported)

This is a Full wwPDB X-ray Structure Validation Report for a publicly released PDB entry.

We welcome your comments at validation@mail.wwpdb.org

A user guide is available at

<https://www.wwpdb.org/validation/2017/XrayValidationReportHelp>

with specific help available everywhere you see the ⓘ symbol.

The types of validation reports are described at

<http://www.wwpdb.org/validation/2017/FAQs#types>.

The following versions of software and data (see [references ⓘ](#)) were used in the production of this report:

MolProbity : 4.02b-467
Mogul : 1.8.5 (274361), CSD as541be (2020)
Xtriage (Phenix) : 1.13
EDS : 2.36
buster-report : 1.1.7 (2018)
Percentile statistics : 20191225.v01 (using entries in the PDB archive December 25th 2019)
Refmac : 5.8.0158
CCP4 : 7.0.044 (Gargrove)
Ideal geometry (proteins) : Engh & Huber (2001)
Ideal geometry (DNA, RNA) : Parkinson et al. (1996)
Validation Pipeline (wwPDB-VP) : 2.36

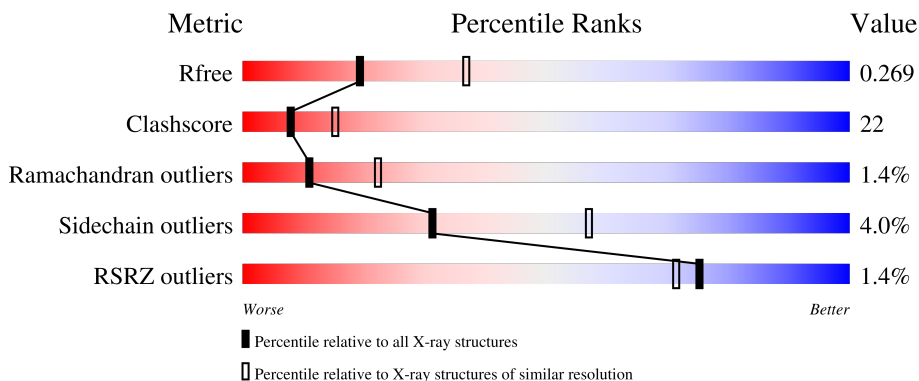
1 Overall quality at a glance

The following experimental techniques were used to determine the structure:

X-RAY DIFFRACTION

The reported resolution of this entry is 2.60 Å.

Percentile scores (ranging between 0-100) for global validation metrics of the entry are shown in the following graphic. The table shows the number of entries on which the scores are based.



Metric	Whole archive (#Entries)	Similar resolution (#Entries, resolution range(Å))
R_{free}	130704	3163 (2.60-2.60)
Clashscore	141614	3518 (2.60-2.60)
Ramachandran outliers	138981	3455 (2.60-2.60)
Sidechain outliers	138945	3455 (2.60-2.60)
RSRZ outliers	127900	3104 (2.60-2.60)

The table below summarises the geometric issues observed across the polymeric chains and their fit to the electron density. The red, orange, yellow and green segments of the lower bar indicate the fraction of residues that contain outliers for ≥ 3 , 2, 1 and 0 types of geometric quality criteria respectively. A grey segment represents the fraction of residues that are not modelled. The numeric value for each fraction is indicated below the corresponding segment, with a dot representing fractions $\leq 5\%$. The upper red bar (where present) indicates the fraction of residues that have poor fit to the electron density. The numeric value is given above the bar.

Mol	Chain	Length	Quality of chain
1	A	358	
1	B	358	
1	C	358	
1	D	358	

2 Entry composition [i](#)

There are 5 unique types of molecules in this entry. The entry contains 11246 atoms, of which 0 are hydrogens and 0 are deuteriums.

In the tables below, the ZeroOcc column contains the number of atoms modelled with zero occupancy, the AltConf column contains the number of residues with at least one atom in alternate conformation and the Trace column contains the number of residues modelled with at most 2 atoms.

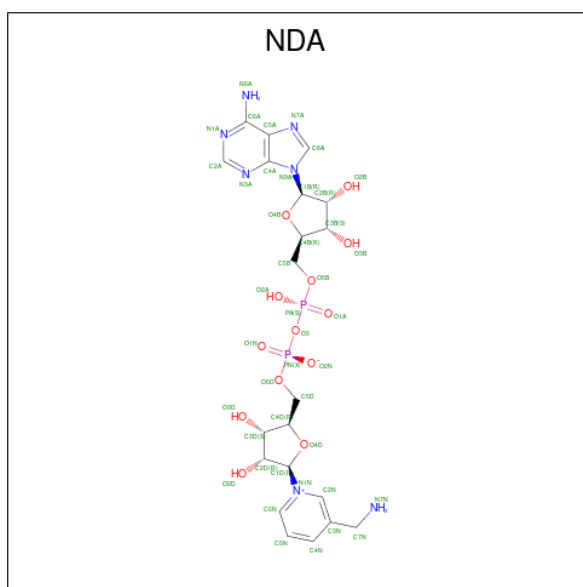
- Molecule 1 is a protein called HOMOSERINE DEHYDROGENASE.

Mol	Chain	Residues	Atoms					ZeroOcc	AltConf	Trace
			Total	C	N	O	S			
1	A	358	2710	1737	443	529	1	0	0	0
1	B	358	2710	1737	443	529	1	0	0	0
1	C	358	2710	1737	443	529	1	0	0	0
1	D	358	2710	1737	443	529	1	0	0	0

- Molecule 2 is SODIUM ION (three-letter code: NA) (formula: Na).

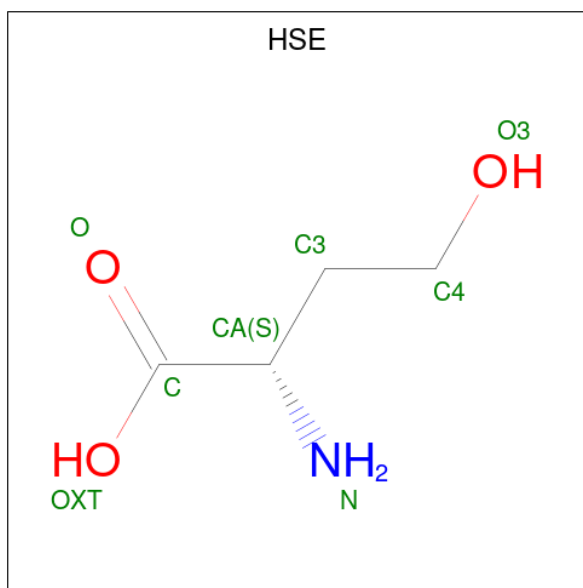
Mol	Chain	Residues	Atoms		ZeroOcc	AltConf
2	A	1	Total	Na	0	0
			1	1		
2	B	1	Total	Na	0	0
			1	1		
2	C	1	Total	Na	0	0
			1	1		
2	D	1	Total	Na	0	0
			1	1		

- Molecule 3 is 3-AMINOMETHYL-PYRIDINIUM-ADENINE-DINUCLEOTIDE (three-letter code: NDA) (formula: C₂₁H₂₉N₇O₁₃P₂).



Mol	Chain	Residues	Atoms					ZeroOcc	AltConf
			Total	C	N	O	P		
3	D	1	43	21	7	13	2	0	0

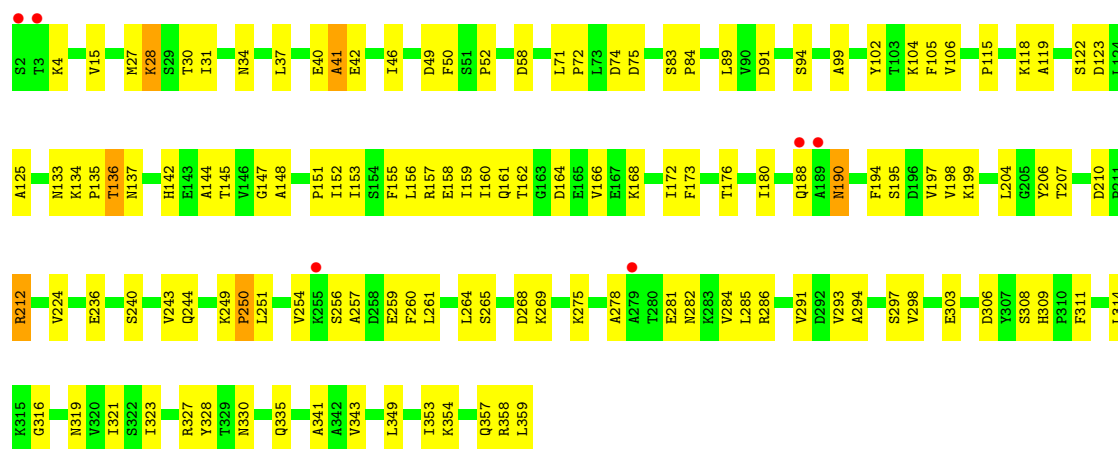
- Molecule 4 is L-HOMOSERINE (three-letter code: HSE) (formula: $C_4H_9NO_3$).



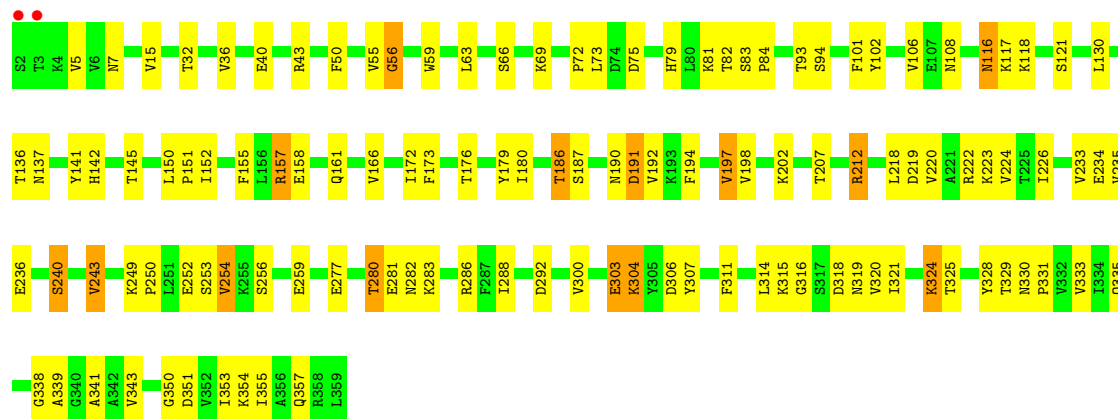
Mol	Chain	Residues	Atoms				ZeroOcc	AltConf
			Total	C	N	O		
4	D	1	8	4	1	3	0	0

- Molecule 5 is water.

Mol	Chain	Residues	Atoms	ZeroOcc	AltConf
5	A	71	Total O 71 71	0	0
5	B	100	Total O 100 100	0	0
5	C	75	Total O 75 75	0	0
5	D	105	Total O 105 105	0	0



● Molecule 1: HOMOSERINE DEHYDROGENASE



4 Data and refinement statistics

Property	Value	Source
Space group	P 1 21 1	Depositor
Cell constants a, b, c, α , β , γ	58.78Å 104.09Å 120.64Å 90.00° 91.93° 90.00°	Depositor
Resolution (Å)	39.40 – 2.60 39.40 – 2.60	Depositor EDS
% Data completeness (in resolution range)	98.5 (39.40-2.60) 99.2 (39.40-2.60)	Depositor EDS
R_{merge}	0.08	Depositor
R_{sym}	(Not available)	Depositor
$\langle I/\sigma(I) \rangle$ ¹	3.97 (at 2.61Å)	Xtrriage
Refinement program	CNS	Depositor
R, R_{free}	0.215 , 0.283 0.201 , 0.269	Depositor DCC
R_{free} test set	4028 reflections (9.07%)	wwPDB-VP
Wilson B-factor (Å ²)	28.2	Xtrriage
Anisotropy	0.155	Xtrriage
Bulk solvent k_{sol} (e/Å ³), B_{sol} (Å ²)	0.30 , 45.8	EDS
L-test for twinning ²	$\langle L \rangle = 0.49$, $\langle L^2 \rangle = 0.32$	Xtrriage
Estimated twinning fraction	0.031 for h,-k,-l	Xtrriage
F_o, F_c correlation	0.91	EDS
Total number of atoms	11246	wwPDB-VP
Average B, all atoms (Å ²)	28.0	wwPDB-VP

Xtrriage's analysis on translational NCS is as follows: *The largest off-origin peak in the Patterson function is 4.29% of the height of the origin peak. No significant pseudotranslation is detected.*

¹Intensities estimated from amplitudes.

²Theoretical values of $\langle |L| \rangle$, $\langle L^2 \rangle$ for acentric reflections are 0.5, 0.333 respectively for untwinned datasets, and 0.375, 0.2 for perfectly twinned datasets.

5 Model quality

5.1 Standard geometry

Bond lengths and bond angles in the following residue types are not validated in this section: NDA, HSE, NA

The Z score for a bond length (or angle) is the number of standard deviations the observed value is removed from the expected value. A bond length (or angle) with $|Z| > 5$ is considered an outlier worth inspection. RMSZ is the root-mean-square of all Z scores of the bond lengths (or angles).

Mol	Chain	Bond lengths		Bond angles	
		RMSZ	# Z >5	RMSZ	# Z >5
1	A	0.43	0/2757	0.70	1/3741 (0.0%)
1	B	0.43	0/2757	0.72	5/3741 (0.1%)
1	C	0.37	0/2757	0.66	1/3741 (0.0%)
1	D	0.39	0/2757	0.68	2/3741 (0.1%)
All	All	0.41	0/11028	0.69	9/14964 (0.1%)

There are no bond length outliers.

All (9) bond angle outliers are listed below:

Mol	Chain	Res	Type	Atoms	Z	Observed(°)	Ideal(°)
1	B	278	ALA	N-CA-C	-8.41	88.30	111.00
1	B	286	ARG	NE-CZ-NH1	-7.83	116.38	120.30
1	D	254	VAL	N-CA-C	-6.27	94.08	111.00
1	B	280	THR	N-CA-C	-5.99	94.82	111.00
1	B	279	ALA	N-CA-C	-5.46	96.27	111.00
1	B	281	GLU	N-CA-C	-5.29	96.71	111.00
1	A	134	LYS	N-CA-C	-5.22	96.89	111.00
1	D	292	ASP	N-CA-C	-5.14	97.13	111.00
1	C	330	ASN	N-CA-C	-5.07	97.30	111.00

There are no chirality outliers.

There are no planarity outliers.

5.2 Too-close contacts

In the following table, the Non-H and H(model) columns list the number of non-hydrogen atoms and hydrogen atoms in the chain respectively. The H(added) column lists the number of hydrogen atoms added and optimized by MolProbity. The Clashes column lists the number of clashes within the asymmetric unit, whereas Symm-Clashes lists symmetry-related clashes.

Mol	Chain	Non-H	H(model)	H(added)	Clashes	Symm-Clashes
1	A	2710	0	2782	141	0
1	B	2710	0	2782	123	0
1	C	2710	0	2782	114	0
1	D	2710	0	2782	109	0
2	A	1	0	0	0	0
2	B	1	0	0	0	0
2	C	1	0	0	0	0
2	D	1	0	0	0	0
3	D	43	0	28	2	0
4	D	8	0	3	0	0
5	A	71	0	0	4	0
5	B	100	0	0	4	0
5	C	75	0	0	7	0
5	D	105	0	0	5	0
All	All	11246	0	11159	475	0

The all-atom clashscore is defined as the number of clashes found per 1000 atoms (including hydrogen atoms). The all-atom clashscore for this structure is 22.

All (475) close contacts within the same asymmetric unit are listed below, sorted by their clash magnitude.

Atom-1	Atom-2	Interatomic distance (Å)	Clash overlap (Å)
1:D:320:VAL:HG12	1:D:335:GLN:HB2	1.26	1.15
1:B:117:LYS:HG2	1:B:145:THR:HG23	1.41	1.02
1:C:28:LYS:H	1:C:28:LYS:HD2	1.28	0.99
1:D:79:HIS:O	1:D:82:THR:HG22	1.64	0.98
1:D:5:VAL:HG22	1:D:32:THR:HB	1.47	0.94
1:C:106:VAL:HG12	1:C:137:ASN:HB2	1.47	0.93
1:B:172:ILE:O	1:B:319:ASN:HB2	1.70	0.92
1:D:172:ILE:O	1:D:319:ASN:HB2	1.71	0.91
1:B:152:ILE:HD12	1:B:321:ILE:HG21	1.54	0.90
1:B:278:ALA:O	5:B:644:HOH:O	1.88	0.90
1:A:37:LEU:HD23	1:A:46:ILE:HB	1.54	0.90
1:B:202:LYS:HA	1:B:207:THR:HG22	1.53	0.89
1:D:339:ALA:HA	3:D:1300:NDA:H4N	1.55	0.89
1:C:58:ASP:HB2	5:C:632:HOH:O	1.74	0.87
1:A:176:THR:HG23	1:A:207:THR:HG22	1.59	0.85
1:C:309:HIS:HD2	1:C:311:PHE:H	1.25	0.84
1:D:55:VAL:HG11	1:D:59:TRP:HA	1.58	0.84
1:D:117:LYS:HG2	1:D:145:THR:HG23	1.58	0.83
1:A:27:MET:HE2	1:A:353:ILE:HD11	1.62	0.82
1:A:28:LYS:H	1:A:28:LYS:HD2	1.45	0.81

Continued on next page...

Continued from previous page...

Atom-1	Atom-2	Interatomic distance (Å)	Clash overlap (Å)
1:B:320:VAL:HG12	1:B:335:GLN:HB2	1.62	0.81
1:B:319:ASN:HD21	1:B:338:GLY:HA3	1.45	0.80
1:B:212:ARG:HG3	1:B:212:ARG:HH11	1.49	0.78
1:A:156:LEU:O	1:A:160:ILE:HG12	1.84	0.77
1:C:249:LYS:HB2	1:C:250:PRO:HD3	1.66	0.77
1:B:116:ASN:HD21	1:B:118:LYS:HG2	1.50	0.77
1:C:34:ASN:CG	1:C:52:PRO:HG3	2.06	0.77
1:D:286:ARG:NH1	1:D:286:ARG:HB3	2.00	0.76
1:B:353:ILE:O	1:B:357:GLN:HG3	1.85	0.76
1:A:27:MET:CE	1:A:353:ILE:HD11	2.15	0.76
1:B:145:THR:HG21	1:B:226:ILE:HD13	1.68	0.75
1:B:202:LYS:HA	1:B:207:THR:CG2	2.17	0.75
1:D:320:VAL:HG12	1:D:335:GLN:CB	2.14	0.75
1:D:43:ARG:HB2	1:D:43:ARG:NH1	2.02	0.74
1:B:2:SER:HB2	1:B:30:THR:O	1.88	0.73
1:C:28:LYS:HD2	1:C:28:LYS:N	2.00	0.73
1:D:212:ARG:NH2	1:D:254:VAL:O	2.21	0.73
1:B:190:ASN:HD22	1:B:192:VAL:HG22	1.52	0.73
1:A:152:ILE:HG21	1:A:321:ILE:HD12	1.71	0.73
1:B:280:THR:O	1:B:281:GLU:HB2	1.88	0.73
1:D:319:ASN:ND2	1:D:338:GLY:HA3	2.04	0.72
1:B:212:ARG:HD3	1:B:260:PHE:CD1	2.24	0.72
1:A:106:VAL:HG12	1:A:137:ASN:HB2	1.72	0.72
1:A:28:LYS:HD2	1:A:28:LYS:N	2.04	0.72
1:C:135:PRO:O	1:C:136:THR:HG23	1.90	0.71
1:D:212:ARG:HH21	1:D:254:VAL:HG22	1.54	0.71
1:D:212:ARG:HH21	1:D:254:VAL:CG2	2.04	0.70
1:A:195:SER:OG	1:A:265:SER:HA	1.91	0.70
1:C:190:ASN:C	1:C:190:ASN:HD22	1.93	0.70
1:A:147:GLY:HA3	1:A:152:ILE:HD12	1.74	0.70
1:B:146:VAL:HB	1:B:153:ILE:HD11	1.74	0.70
1:C:256:SER:OG	1:C:259:GLU:HG3	1.92	0.69
1:A:159:ILE:HG23	1:A:164:ASP:HB3	1.74	0.69
1:A:254:VAL:CG2	1:A:259:GLU:HB2	2.22	0.69
1:B:249:LYS:HB2	1:B:250:PRO:HD3	1.75	0.69
1:C:152:ILE:HD13	1:C:321:ILE:CD1	2.23	0.69
1:C:37:LEU:CD2	1:C:46:ILE:HB	2.23	0.68
1:B:210:ASP:OD1	1:B:212:ARG:HG3	1.93	0.68
1:A:251:LEU:HD12	1:A:251:LEU:N	2.09	0.68
1:C:27:MET:HE2	1:C:353:ILE:HD11	1.76	0.68
1:B:304:LYS:NZ	1:B:304:LYS:HB3	2.09	0.68

Continued on next page...

Continued from previous page...

Atom-1	Atom-2	Interatomic distance (Å)	Clash overlap (Å)
1:B:282:ASN:HB2	1:B:307:TYR:CD1	2.29	0.68
1:D:152:ILE:HD12	1:D:321:ILE:HG21	1.75	0.68
1:D:288:ILE:HD11	1:D:303:GLU:OE1	1.94	0.68
1:C:27:MET:HE3	1:C:349:LEU:HD21	1.75	0.67
1:C:198:VAL:HG21	1:C:264:LEU:CD2	2.25	0.67
1:C:195:SER:OG	1:C:265:SER:HA	1.94	0.67
1:D:69:LYS:HG3	5:D:437:HOH:O	1.94	0.67
1:A:34:ASN:OD1	1:A:52:PRO:HG3	1.95	0.66
1:D:55:VAL:CG1	1:D:59:TRP:HA	2.26	0.66
1:B:278:ALA:O	1:B:279:ALA:HB2	1.96	0.66
1:D:116:ASN:HD22	1:D:117:LYS:N	1.93	0.66
1:B:36:VAL:HG11	1:B:50:PHE:CD2	2.31	0.65
1:A:108:ASN:N	1:A:108:ASN:HD22	1.92	0.65
1:A:152:ILE:HD13	1:A:321:ILE:CD1	2.27	0.65
1:A:37:LEU:CD2	1:A:46:ILE:HB	2.26	0.65
1:D:190:ASN:OD1	1:D:192:VAL:HG13	1.97	0.65
1:A:81:LYS:NZ	1:A:81:LYS:HB3	2.12	0.65
1:D:141:TYR:HB3	1:D:351:ASP:OD2	1.97	0.64
1:A:195:SER:O	1:A:198:VAL:HG22	1.97	0.64
1:B:324:LYS:NZ	1:B:329:THR:HA	2.12	0.64
1:A:254:VAL:HG21	1:A:260:PHE:N	2.13	0.64
1:A:198:VAL:HG21	1:A:264:LEU:CD2	2.28	0.64
1:C:354:LYS:HE2	1:D:158:GLU:OE2	1.97	0.64
1:A:254:VAL:HG22	1:A:259:GLU:HB2	1.79	0.64
1:B:30:THR:HG23	1:B:31:ILE:H	1.62	0.64
1:A:30:THR:HG23	1:A:31:ILE:H	1.62	0.64
1:A:224:VAL:HG21	1:A:289:GLY:HA3	1.80	0.64
1:A:94:SER:O	1:A:118:LYS:HE3	1.97	0.63
1:A:159:ILE:CG2	1:A:164:ASP:HB3	2.28	0.63
1:C:212:ARG:HD2	1:C:260:PHE:CG	2.34	0.63
1:D:15:VAL:HG12	1:D:341:ALA:HB2	1.80	0.63
1:D:319:ASN:HD21	1:D:338:GLY:HA3	1.61	0.63
1:C:106:VAL:CG1	1:C:137:ASN:HB2	2.26	0.63
1:B:58:ASP:HA	5:B:543:HOH:O	1.98	0.63
1:D:180:ILE:HG23	1:D:197:VAL:HG22	1.80	0.62
1:A:126:THR:O	1:A:130:LEU:HG	2.00	0.62
1:B:190:ASN:ND2	1:B:192:VAL:HG13	2.13	0.62
1:B:286:ARG:O	1:B:288:ILE:HG23	1.99	0.62
1:B:55:VAL:HG11	1:B:59:TRP:HB3	1.81	0.62
1:A:142:HIS:HE1	1:A:157:ARG:HH21	1.47	0.62
1:B:212:ARG:HG3	1:B:212:ARG:NH1	2.11	0.62

Continued on next page...

Continued from previous page...

Atom-1	Atom-2	Interatomic distance (Å)	Clash overlap (Å)
1:D:202:LYS:HA	1:D:207:THR:HG22	1.81	0.62
1:B:55:VAL:HG11	1:B:59:TRP:CB	2.29	0.62
1:C:156:LEU:O	1:C:160:ILE:HG12	1.98	0.62
1:A:184:PHE:CZ	1:A:275:LYS:HD3	2.35	0.62
1:B:212:ARG:HD3	1:B:260:PHE:CG	2.34	0.62
1:C:284:VAL:HG22	1:C:286:ARG:HH12	1.65	0.62
1:B:320:VAL:HG12	1:B:335:GLN:CB	2.30	0.61
1:D:145:THR:HG21	1:D:226:ILE:HD13	1.82	0.61
1:D:145:THR:HG21	1:D:226:ILE:CD1	2.30	0.61
1:D:40:GLU:HG3	1:D:63:LEU:HD21	1.83	0.61
1:A:190:ASN:ND2	1:A:192:VAL:H	1.99	0.61
1:C:34:ASN:OD1	1:C:52:PRO:HG3	2.00	0.61
1:A:146:VAL:HG23	1:A:153:ILE:HD11	1.82	0.61
1:A:49:ASP:O	1:A:50:PHE:HB2	2.00	0.61
1:D:282:ASN:HA	1:D:307:TYR:CE1	2.36	0.61
1:C:27:MET:CE	1:C:353:ILE:HD11	2.31	0.60
1:C:172:ILE:HD12	1:C:314:LEU:HD11	1.83	0.60
1:C:37:LEU:HD23	1:C:46:ILE:HD12	1.82	0.60
1:C:30:THR:HG23	1:C:31:ILE:N	2.17	0.60
1:B:166:VAL:HA	1:B:325:THR:HG22	1.83	0.60
1:C:49:ASP:O	1:C:50:PHE:HB2	2.02	0.60
1:D:353:ILE:O	1:D:357:GLN:HG3	2.01	0.60
1:A:152:ILE:HG21	1:A:321:ILE:CD1	2.32	0.59
1:C:198:VAL:HG21	1:C:264:LEU:HD23	1.85	0.59
1:C:142:HIS:HE1	1:C:157:ARG:HH21	1.50	0.59
1:D:202:LYS:HA	1:D:207:THR:CG2	2.32	0.59
1:B:44:SER:O	1:B:68:THR:HB	2.02	0.59
1:A:107:GLU:C	1:A:108:ASN:HD22	2.06	0.59
1:A:152:ILE:HD13	1:A:321:ILE:HD12	1.83	0.59
1:A:254:VAL:HG21	1:A:260:PHE:H	1.67	0.59
1:B:286:ARG:CZ	1:B:286:ARG:HB3	2.32	0.59
1:A:288:ILE:HD13	1:A:305:TYR:OH	2.02	0.58
1:A:106:VAL:CG1	1:A:137:ASN:HB2	2.33	0.58
1:A:159:ILE:HG23	1:A:164:ASP:CB	2.33	0.58
1:C:37:LEU:HD22	1:C:46:ILE:HB	1.86	0.58
1:B:196:ASP:O	1:B:200:VAL:HG23	2.03	0.58
1:D:55:VAL:HG11	1:D:59:TRP:CA	2.31	0.58
1:C:251:LEU:O	1:C:254:VAL:HG22	2.03	0.58
1:B:190:ASN:HD21	1:B:192:VAL:HG13	1.67	0.58
1:C:194:PHE:O	1:C:197:VAL:HG22	2.02	0.58
1:D:218:LEU:O	1:D:222:ARG:HG3	2.03	0.58

Continued on next page...

Continued from previous page...

Atom-1	Atom-2	Interatomic distance (Å)	Clash overlap (Å)
1:A:30:THR:HG23	1:A:31:ILE:N	2.19	0.57
1:A:152:ILE:CG2	1:A:321:ILE:HD12	2.33	0.57
1:C:176:THR:HG23	1:C:207:THR:HG22	1.87	0.57
1:B:145:THR:HG21	1:B:226:ILE:CD1	2.34	0.57
1:A:176:THR:CG2	1:A:207:THR:HG22	2.34	0.57
1:A:327:ARG:NH1	1:B:346:ALA:HB2	2.20	0.57
1:C:358:ARG:O	1:C:359:LEU:HB2	2.05	0.57
1:A:265:SER:HB2	5:A:667:HOH:O	2.05	0.56
1:B:243:VAL:HB	1:B:300:VAL:CG2	2.35	0.56
1:D:288:ILE:HD12	1:D:288:ILE:C	2.25	0.56
1:D:50:PHE:CD1	1:D:84:PRO:HD3	2.41	0.56
1:A:291:VAL:HG22	1:A:298:VAL:HG22	1.88	0.56
1:B:77:ILE:O	1:B:81:LYS:HG2	2.06	0.56
1:B:278:ALA:HB1	1:B:283:LYS:O	2.06	0.56
1:A:194:PHE:O	1:A:197:VAL:HG22	2.06	0.55
1:C:343:VAL:HG13	1:D:328:TYR:OH	2.06	0.55
1:C:99:ALA:HB1	1:C:119:ALA:HB2	1.88	0.55
1:B:141:TYR:HB3	1:B:351:ASP:OD2	2.06	0.55
1:C:50:PHE:CE2	1:C:83:SER:HB2	2.42	0.55
1:A:249:LYS:HB2	1:A:250:PRO:HD3	1.89	0.54
1:B:55:VAL:CG1	1:B:59:TRP:HA	2.37	0.54
1:A:226:ILE:O	1:A:230:ILE:HG13	2.07	0.54
1:B:152:ILE:CD1	1:B:321:ILE:HG21	2.32	0.54
1:D:190:ASN:OD1	1:D:192:VAL:N	2.40	0.54
1:A:73:LEU:HD12	1:A:101:PHE:CE1	2.42	0.54
1:C:275:LYS:O	1:C:278:ALA:HB3	2.07	0.54
1:D:286:ARG:HB3	1:D:286:ARG:HH11	1.68	0.54
1:A:81:LYS:HB3	1:A:81:LYS:HZ3	1.70	0.54
1:B:319:ASN:HD21	1:B:338:GLY:CA	2.18	0.54
1:D:277:GLU:O	1:D:280:THR:N	2.35	0.54
1:A:123:ASP:OD2	1:A:126:THR:N	2.36	0.54
1:D:116:ASN:HD21	1:D:118:LYS:HG2	1.73	0.54
1:A:103:THR:O	1:A:107:GLU:HG2	2.08	0.54
1:A:265:SER:HA	1:A:268:ASP:OD2	2.08	0.54
1:C:152:ILE:HD13	1:C:321:ILE:HD12	1.90	0.54
1:D:249:LYS:HB2	1:D:250:PRO:HD3	1.90	0.54
1:B:309:HIS:CE1	1:B:310:PRO:HD2	2.43	0.54
1:C:158:GLU:O	1:C:162:THR:HG23	2.08	0.54
1:B:91:ASP:O	1:B:115:PRO:HD2	2.08	0.53
1:C:30:THR:HG23	1:C:31:ILE:H	1.73	0.53
1:C:89:LEU:HD22	1:C:105:PHE:CE2	2.42	0.53

Continued on next page...

Continued from previous page...

Atom-1	Atom-2	Interatomic distance (Å)	Clash overlap (Å)
1:B:126:THR:O	1:B:130:LEU:HG	2.08	0.53
1:D:283:LYS:HG2	1:D:306:ASP:HA	1.90	0.53
1:A:212:ARG:HD2	1:A:260:PHE:CG	2.44	0.53
1:D:256:SER:HB3	1:D:259:GLU:HB2	1.90	0.53
1:A:91:ASP:O	1:A:115:PRO:HD2	2.08	0.53
1:A:155:PHE:CD1	1:B:151:PRO:HG3	2.43	0.53
1:B:309:HIS:CD2	1:B:311:PHE:H	2.26	0.53
1:B:30:THR:HG23	1:B:31:ILE:N	2.23	0.53
1:B:209:PRO:O	1:B:211:PRO:HD3	2.09	0.53
1:D:320:VAL:CG1	1:D:335:GLN:HB2	2.18	0.53
1:B:311:PHE:HA	1:B:314:LEU:CD1	2.38	0.53
1:B:280:THR:O	1:B:280:THR:HG23	2.08	0.53
1:B:324:LYS:HZ3	1:B:329:THR:HA	1.73	0.53
1:D:116:ASN:ND2	1:D:118:LYS:H	2.06	0.53
1:B:249:LYS:O	1:B:252:GLU:HG3	2.09	0.53
1:A:233:VAL:O	1:A:235:VAL:HG23	2.08	0.53
1:C:135:PRO:O	1:C:136:THR:CG2	2.57	0.53
1:A:73:LEU:HD12	1:A:101:PHE:CD1	2.44	0.52
1:C:152:ILE:HG21	1:C:321:ILE:HD12	1.92	0.52
1:A:187:SER:HA	1:A:307:TYR:CZ	2.44	0.52
1:A:190:ASN:ND2	1:A:192:VAL:N	2.58	0.52
1:A:198:VAL:HG21	1:A:264:LEU:HD23	1.92	0.52
1:A:267:TYR:CD1	1:A:267:TYR:N	2.77	0.52
1:A:218:LEU:O	1:A:222:ARG:HG3	2.09	0.52
1:A:224:VAL:CG2	1:A:289:GLY:HA3	2.39	0.52
1:B:277:GLU:O	1:B:280:THR:HG22	2.10	0.52
1:B:128:LYS:HZ1	1:B:234:GLU:CD	2.13	0.52
1:C:257:ALA:O	1:C:261:LEU:HB2	2.10	0.52
1:D:249:LYS:O	1:D:252:GLU:HG3	2.09	0.52
1:A:212:ARG:HD2	1:A:260:PHE:CD1	2.45	0.52
1:A:251:LEU:HD12	1:A:251:LEU:H	1.75	0.52
1:D:233:VAL:O	1:D:235:VAL:N	2.42	0.52
1:D:286:ARG:HH11	1:D:286:ARG:CB	2.23	0.52
1:D:43:ARG:HB2	1:D:43:ARG:HH11	1.71	0.52
1:D:286:ARG:HD2	1:D:311:PHE:HB3	1.91	0.52
1:A:195:SER:OG	1:A:265:SER:CA	2.58	0.51
1:A:273:GLN:O	1:A:277:GLU:HG3	2.10	0.51
1:C:15:VAL:HG12	1:C:341:ALA:HB2	1.92	0.51
1:C:152:ILE:HD13	1:C:321:ILE:HD11	1.91	0.51
1:C:166:VAL:O	1:C:293:VAL:HG21	2.10	0.51
1:D:81:LYS:HD3	1:D:108:ASN:HB3	1.91	0.51

Continued on next page...

Continued from previous page...

Atom-1	Atom-2	Interatomic distance (Å)	Clash overlap (Å)
1:D:106:VAL:HG12	1:D:137:ASN:HB3	1.92	0.51
1:B:146:VAL:HB	1:B:153:ILE:CD1	2.39	0.51
1:C:99:ALA:HA	1:C:102:TYR:CE2	2.45	0.51
1:C:328:TYR:OH	1:D:343:VAL:HG13	2.11	0.51
1:A:134:LYS:HE2	1:A:134:LYS:HA	1.93	0.51
1:B:309:HIS:ND1	1:B:310:PRO:HD2	2.26	0.51
1:C:281:GLU:O	1:C:282:ASN:HB2	2.10	0.51
1:B:116:ASN:HD21	1:B:118:LYS:CG	2.22	0.51
1:C:224:VAL:CG1	1:C:298:VAL:HG13	2.40	0.51
1:C:251:LEU:HD12	1:C:251:LEU:N	2.26	0.51
1:C:284:VAL:CG2	1:C:286:ARG:HH12	2.24	0.51
1:D:142:HIS:HE1	1:D:157:ARG:HH21	1.58	0.51
1:B:281:GLU:CB	1:B:283:LYS:HE3	2.41	0.51
1:A:190:ASN:HD22	1:A:192:VAL:N	2.09	0.50
1:A:197:VAL:HG23	1:A:198:VAL:N	2.26	0.50
1:B:278:ALA:O	1:B:279:ALA:CB	2.56	0.50
1:C:243:VAL:HG13	1:C:243:VAL:O	2.11	0.50
1:C:72:PRO:HD2	1:C:75:ASP:OD2	2.11	0.50
1:D:7:ASN:HB3	1:D:36:VAL:HG21	1.94	0.50
1:A:209:PRO:O	1:A:211:PRO:HD3	2.11	0.50
1:A:251:LEU:N	1:A:251:LEU:CD1	2.74	0.50
1:D:324:LYS:HE2	1:D:329:THR:O	2.12	0.50
1:A:142:HIS:HE1	1:A:157:ARG:NH2	2.08	0.50
1:B:153:ILE:HD12	1:B:153:ILE:N	2.25	0.50
1:A:309:HIS:HD2	1:A:311:PHE:H	1.60	0.49
1:A:349:LEU:HD23	1:B:162:THR:HG22	1.94	0.49
1:B:269:LYS:HD3	5:B:755:HOH:O	2.12	0.49
1:A:190:ASN:HD22	1:A:192:VAL:H	1.57	0.49
1:D:350:GLY:O	1:D:354:LYS:HG3	2.13	0.49
1:A:167:GLU:O	1:A:293:VAL:HG22	2.13	0.49
1:B:186:THR:HG22	1:B:190:ASN:HB2	1.94	0.49
1:B:90:VAL:HG12	1:B:92:ASN:ND2	2.28	0.49
1:C:190:ASN:C	1:C:190:ASN:ND2	2.65	0.49
1:B:172:ILE:HG12	1:B:288:ILE:HG22	1.94	0.49
1:D:102:TYR:HB3	1:D:130:LEU:HD21	1.93	0.49
1:A:251:LEU:H	1:A:251:LEU:CD1	2.26	0.49
1:A:353:ILE:O	1:A:357:GLN:HG3	2.12	0.49
1:B:309:HIS:HD2	1:B:311:PHE:HB2	1.78	0.49
1:C:71:LEU:HG	5:C:565:HOH:O	2.12	0.49
1:C:236:GLU:HB2	1:C:240:SER:CB	2.43	0.49
1:A:172:ILE:HD12	1:A:314:LEU:HD11	1.95	0.49

Continued on next page...

Continued from previous page...

Atom-1	Atom-2	Interatomic distance (Å)	Clash overlap (Å)
1:C:37:LEU:HD23	1:C:46:ILE:HB	1.93	0.49
1:C:244:GLN:O	1:C:244:GLN:HG2	2.12	0.49
1:D:173:PHE:HB3	1:D:223:LYS:CD	2.42	0.49
1:A:212:ARG:HH11	1:A:212:ARG:HG2	1.78	0.48
1:B:15:VAL:HG12	1:B:341:ALA:HB2	1.95	0.48
1:A:243:VAL:HG13	1:A:243:VAL:O	2.12	0.48
1:C:74:ASP:OD1	1:C:104:LYS:HE2	2.13	0.48
1:B:216:ASN:OD1	1:B:218:LEU:HB3	2.13	0.48
1:A:190:ASN:ND2	1:A:192:VAL:HB	2.29	0.48
1:B:207:THR:HG23	1:B:208:GLU:O	2.14	0.48
1:C:198:VAL:HG23	1:C:199:LYS:N	2.28	0.48
1:A:134:LYS:HE2	1:A:134:LYS:CA	2.43	0.48
1:D:116:ASN:HD22	1:D:116:ASN:C	2.16	0.48
1:A:28:LYS:H	1:A:28:LYS:CD	2.20	0.48
1:B:55:VAL:CG1	1:B:59:TRP:HB3	2.42	0.48
1:B:116:ASN:ND2	1:B:118:LYS:HG2	2.24	0.48
1:C:144:ALA:HA	1:C:148:ALA:O	2.14	0.48
1:D:351:ASP:O	1:D:355:ILE:HG13	2.14	0.48
1:B:157:ARG:HG3	1:B:157:ARG:HH11	1.78	0.48
1:D:102:TYR:O	1:D:106:VAL:HG23	2.14	0.48
1:C:160:ILE:HD11	1:C:166:VAL:HG23	1.96	0.48
1:C:284:VAL:HG22	1:C:286:ARG:NH1	2.29	0.48
1:C:168:LYS:HA	1:C:291:VAL:O	2.13	0.48
1:D:243:VAL:HA	1:D:300:VAL:HG22	1.95	0.48
1:A:99:ALA:HB1	1:A:119:ALA:HB2	1.96	0.47
1:B:286:ARG:HD3	1:B:311:PHE:HB3	1.95	0.47
1:B:296:LYS:N	1:B:296:LYS:HD2	2.29	0.47
1:B:304:LYS:HB3	1:B:304:LYS:HZ3	1.77	0.47
1:C:40:GLU:HB3	1:C:41:ALA:H	1.48	0.47
1:C:28:LYS:H	1:C:28:LYS:CD	2.12	0.47
1:D:72:PRO:HB2	1:D:75:ASP:OD2	2.14	0.47
1:A:248:PRO:HB2	1:A:251:LEU:HD13	1.96	0.47
1:B:2:SER:CB	1:B:30:THR:O	2.59	0.47
1:C:151:PRO:HD3	1:D:155:PHE:CE1	2.50	0.47
1:D:173:PHE:HB3	1:D:223:LYS:HD2	1.96	0.47
1:A:190:ASN:HD21	1:A:192:VAL:HB	1.79	0.47
1:A:335:GLN:HG2	1:B:333:VAL:HB	1.96	0.47
1:B:145:THR:CG2	1:B:226:ILE:CD1	2.93	0.47
1:B:73:LEU:O	1:B:77:ILE:HG13	2.15	0.47
1:B:134:LYS:HB2	1:B:137:ASN:CG	2.35	0.47
1:C:155:PHE:O	1:C:159:ILE:HG12	2.14	0.47

Continued on next page...

Continued from previous page...

Atom-1	Atom-2	Interatomic distance (Å)	Clash overlap (Å)
1:D:116:ASN:HD21	1:D:118:LYS:CG	2.28	0.47
1:A:333:VAL:HB	1:B:335:GLN:HG2	1.96	0.47
1:C:269:LYS:HE2	5:C:711:HOH:O	2.15	0.47
1:C:293:VAL:HG23	1:C:294:ALA:N	2.30	0.47
1:A:159:ILE:HA	1:A:159:ILE:HD13	1.75	0.47
1:C:133:ASN:ND2	5:C:463:HOH:O	2.48	0.47
1:D:277:GLU:O	1:D:280:THR:HB	2.15	0.47
1:A:329:THR:HA	5:A:745:HOH:O	2.16	0.46
1:B:291:VAL:HG22	1:B:298:VAL:HG22	1.96	0.46
1:D:176:THR:O	1:D:180:ILE:HG13	2.14	0.46
1:C:142:HIS:HB2	1:C:145:THR:CG2	2.45	0.46
1:C:27:MET:HE3	1:C:349:LEU:CD2	2.44	0.46
1:C:102:TYR:O	1:C:106:VAL:HG23	2.16	0.46
1:C:212:ARG:HD2	1:C:260:PHE:CD1	2.51	0.46
1:B:311:PHE:CE1	1:B:320:VAL:HG21	2.51	0.46
1:C:180:ILE:HD13	1:C:198:VAL:HG12	1.96	0.46
1:D:150:LEU:HA	1:D:151:PRO:HD3	1.80	0.46
1:B:123:ASP:OD2	1:B:125:ALA:HB3	2.15	0.46
1:C:135:PRO:O	1:C:136:THR:CB	2.63	0.46
1:C:309:HIS:CD2	1:C:311:PHE:H	2.16	0.46
1:A:50:PHE:CE2	1:A:83:SER:HB2	2.50	0.46
5:A:748:HOH:O	1:B:315:LYS:HG3	2.15	0.46
1:C:122:SER:OG	1:C:123:ASP:N	2.49	0.46
1:D:136:THR:HG22	1:D:136:THR:O	2.14	0.46
1:A:254:VAL:HG11	1:A:260:PHE:HB2	1.97	0.45
1:A:356:ALA:O	1:A:358:ARG:O	2.35	0.45
1:C:152:ILE:CG2	1:C:321:ILE:HD12	2.46	0.45
1:D:220:VAL:O	1:D:224:VAL:HG23	2.17	0.45
1:C:91:ASP:O	1:C:115:PRO:HD2	2.16	0.45
1:D:157:ARG:O	1:D:161:GLN:HG3	2.15	0.45
1:A:187:SER:HA	1:A:307:TYR:CE2	2.52	0.45
1:D:186:THR:OG1	1:D:187:SER:N	2.48	0.45
1:D:55:VAL:O	1:D:56:GLY:O	2.33	0.45
1:D:219:ASP:HB3	5:D:734:HOH:O	2.16	0.45
1:B:265:SER:HB3	5:B:739:HOH:O	2.16	0.45
1:A:147:GLY:HA3	1:A:152:ILE:CD1	2.45	0.45
1:C:135:PRO:O	1:C:136:THR:OG1	2.31	0.45
1:A:190:ASN:HD22	1:A:191:ASP:N	2.14	0.45
1:B:350:GLY:O	1:B:354:LYS:HG3	2.17	0.45
1:A:37:LEU:HD13	1:A:37:LEU:C	2.37	0.45
1:C:133:ASN:CG	5:C:463:HOH:O	2.55	0.45

Continued on next page...

Continued from previous page...

Atom-1	Atom-2	Interatomic distance (Å)	Clash overlap (Å)
1:C:319:ASN:N	1:C:319:ASN:HD22	2.15	0.45
1:D:106:VAL:O	1:D:137:ASN:HA	2.17	0.45
1:D:280:THR:HG22	1:D:281:GLU:HG3	1.99	0.45
1:D:50:PHE:CE1	1:D:82:THR:HG23	2.52	0.45
1:A:249:LYS:H	1:A:249:LYS:HG3	1.47	0.44
1:C:94:SER:O	1:C:118:LYS:HE3	2.17	0.44
1:A:141:TYR:HB3	1:A:351:ASP:CG	2.38	0.44
1:C:147:GLY:HA3	1:C:152:ILE:HD12	1.98	0.44
1:C:265:SER:HA	1:C:268:ASP:OD2	2.17	0.44
1:A:108:ASN:N	1:A:108:ASN:ND2	2.64	0.44
1:B:2:SER:HB2	1:B:30:THR:C	2.37	0.44
1:B:173:PHE:HB3	1:B:223:LYS:HD2	1.98	0.44
1:B:311:PHE:HA	1:B:314:LEU:HD13	1.98	0.44
1:A:142:HIS:CE1	1:A:157:ARG:HH21	2.30	0.44
1:A:190:ASN:HD22	1:A:190:ASN:C	2.20	0.44
1:D:15:VAL:HB	3:D:1300:NDA:O1N	2.17	0.44
1:D:73:LEU:HD12	1:D:101:PHE:CD2	2.52	0.44
1:A:16:VAL:HG23	1:A:17:GLY:N	2.31	0.44
1:B:194:PHE:O	1:B:198:VAL:HG23	2.17	0.44
1:B:281:GLU:HB2	1:B:283:LYS:HE3	1.99	0.44
1:D:141:TYR:HB3	1:D:351:ASP:CG	2.37	0.44
1:B:315:LYS:O	1:B:316:GLY:O	2.35	0.44
1:C:353:ILE:O	1:C:357:GLN:HG3	2.18	0.44
1:A:177:LEU:HD21	1:A:215:LEU:HD23	2.00	0.43
1:B:280:THR:C	1:B:281:GLU:O	2.50	0.43
1:A:351:ASP:HA	1:A:354:LYS:HE3	2.00	0.43
1:C:42:GLU:H	1:C:42:GLU:CD	2.21	0.43
1:C:164:ASP:OD1	1:C:327:ARG:HG3	2.18	0.43
1:D:172:ILE:HD11	1:D:286:ARG:HD3	1.99	0.43
1:A:40:GLU:HB3	1:A:41:ALA:H	1.51	0.43
1:A:219:ASP:OD1	1:A:223:LYS:HE3	2.18	0.43
1:B:195:SER:O	1:B:199:LYS:HG3	2.18	0.43
1:D:304:LYS:HE2	5:D:709:HOH:O	2.18	0.43
1:D:314:LEU:HB3	1:D:318:ASP:HB3	2.00	0.43
1:B:202:LYS:NZ	1:B:209:PRO:O	2.44	0.43
1:C:210:ASP:OD1	1:C:212:ARG:HB2	2.18	0.43
1:D:83:SER:HA	1:D:84:PRO:HD3	1.78	0.43
1:B:134:LYS:HB2	1:B:137:ASN:ND2	2.33	0.43
1:D:286:ARG:HB3	1:D:286:ARG:CZ	2.47	0.43
1:A:95:SER:HB3	1:A:98:ILE:HG12	2.01	0.43
1:A:195:SER:OG	1:A:265:SER:N	2.51	0.43

Continued on next page...

Continued from previous page...

Atom-1	Atom-2	Interatomic distance (Å)	Clash overlap (Å)
1:C:321:ILE:HG22	1:C:323:ILE:HG13	2.01	0.43
1:A:31:ILE:CG2	1:A:32:THR:N	2.81	0.43
1:B:265:SER:HA	1:B:268:ASP:OD2	2.19	0.43
1:D:194:PHE:O	1:D:198:VAL:HG23	2.18	0.43
1:B:81:LYS:HD3	1:B:108:ASN:HB3	2.01	0.43
1:B:83:SER:HA	1:B:84:PRO:HD3	1.76	0.43
1:D:43:ARG:HH11	1:D:43:ARG:CB	2.31	0.43
1:A:166:VAL:O	1:A:293:VAL:HG21	2.18	0.43
1:B:243:VAL:O	1:B:243:VAL:CG2	2.67	0.43
1:D:236:GLU:HB3	1:D:240:SER:CB	2.49	0.43
1:D:314:LEU:HD13	1:D:318:ASP:O	2.18	0.43
1:A:134:LYS:CG	1:A:137:ASN:ND2	2.82	0.42
1:A:330:ASN:HD22	1:A:330:ASN:HA	1.61	0.42
1:B:253:SER:O	1:B:254:VAL:O	2.36	0.42
1:C:188:GLN:OE1	1:C:188:GLN:HA	2.19	0.42
1:A:30:THR:CG2	1:A:31:ILE:H	2.31	0.42
1:D:43:ARG:HG2	1:D:66:SER:O	2.20	0.42
1:A:251:LEU:HB3	1:A:260:PHE:HD1	1.84	0.42
1:A:358:ARG:O	1:A:359:LEU:HB2	2.18	0.42
1:D:152:ILE:HD12	1:D:321:ILE:CG2	2.46	0.42
1:D:43:ARG:HB2	1:D:43:ARG:CZ	2.50	0.42
1:D:166:VAL:HA	1:D:325:THR:HG22	2.01	0.42
1:D:212:ARG:CG	1:D:212:ARG:HH11	2.33	0.42
1:A:2:SER:HB3	1:A:359:LEU:OXT	2.19	0.42
1:D:187:SER:HA	1:D:307:TYR:CE2	2.54	0.42
1:B:210:ASP:HB3	1:B:213:ASP:OD1	2.20	0.42
1:C:173:PHE:CD1	1:C:173:PHE:N	2.88	0.42
1:C:176:THR:O	1:C:180:ILE:HG13	2.19	0.42
1:D:315:LYS:HA	5:D:516:HOH:O	2.19	0.42
1:A:81:LYS:NZ	1:A:81:LYS:CB	2.81	0.42
1:B:36:VAL:O	1:B:36:VAL:CG1	2.68	0.42
1:B:236:GLU:O	1:B:237:SER:HB3	2.19	0.42
1:A:254:VAL:O	1:A:255:LYS:HB3	2.19	0.42
1:A:256:SER:HB2	1:A:259:GLU:HG3	2.02	0.42
1:D:179:TYR:HA	1:D:316:GLY:O	2.20	0.42
1:A:184:PHE:CE2	1:A:275:LYS:HD3	2.55	0.42
1:A:349:LEU:HB3	1:B:162:THR:HG22	2.01	0.42
1:B:72:PRO:O	1:B:75:ASP:N	2.53	0.42
1:B:300:VAL:HG23	1:B:300:VAL:O	2.20	0.42
1:C:134:LYS:HB2	1:C:137:ASN:ND2	2.34	0.42
1:C:251:LEU:H	1:C:251:LEU:CD1	2.33	0.42

Continued on next page...

Continued from previous page...

Atom-1	Atom-2	Interatomic distance (Å)	Clash overlap (Å)
1:D:121:SER:CB	1:D:222:ARG:HB3	2.50	0.42
1:A:261:LEU:HA	1:A:261:LEU:HD12	1.67	0.41
1:B:36:VAL:O	1:B:36:VAL:HG12	2.20	0.41
1:B:153:ILE:CD1	1:B:153:ILE:N	2.83	0.41
1:C:123:ASP:OD2	1:C:125:ALA:HB3	2.19	0.41
1:C:335:GLN:HG2	1:D:333:VAL:HB	2.02	0.41
1:A:198:VAL:CG2	1:A:199:LYS:N	2.84	0.41
1:D:190:ASN:OD1	1:D:191:ASP:N	2.53	0.41
1:A:18:SER:HB3	5:A:487:HOH:O	2.19	0.41
1:B:116:ASN:C	1:B:116:ASN:HD22	2.22	0.41
1:A:254:VAL:O	1:A:255:LYS:CB	2.68	0.41
1:B:2:SER:HB3	1:B:31:ILE:HA	2.03	0.41
1:C:152:ILE:HG21	1:C:321:ILE:CD1	2.50	0.41
1:C:275:LYS:HA	1:C:285:LEU:HD11	2.01	0.41
1:A:281:GLU:O	1:A:282:ASN:HB2	2.20	0.41
1:C:327:ARG:HD2	5:C:736:HOH:O	2.20	0.41
1:D:212:ARG:HH21	1:D:254:VAL:HG23	1.81	0.41
1:A:142:HIS:HD2	1:A:145:THR:OG1	2.03	0.41
1:A:263:LYS:HG3	1:A:263:LYS:O	2.21	0.41
1:A:38:LEU:HD21	1:A:63:LEU:HD22	2.01	0.41
1:A:134:LYS:HB2	1:A:137:ASN:CG	2.41	0.41
1:A:139:PHE:CE2	1:A:358:ARG:NH2	2.89	0.41
1:A:256:SER:CB	1:A:259:GLU:HG3	2.51	0.41
1:A:198:VAL:HG23	1:A:199:LYS:N	2.36	0.40
1:A:328:TYR:OH	1:B:343:VAL:HG13	2.21	0.40
1:B:124:LEU:O	1:B:128:LYS:HG2	2.21	0.40
1:B:304:LYS:NZ	1:B:304:LYS:CB	2.82	0.40
1:B:309:HIS:CG	1:B:310:PRO:HD2	2.56	0.40
1:D:219:ASP:HB2	5:D:640:HOH:O	2.21	0.40
1:C:30:THR:CG2	1:C:31:ILE:N	2.82	0.40
1:C:134:LYS:HA	1:C:135:PRO:HD3	1.98	0.40
1:C:157:ARG:O	1:C:161:GLN:HG3	2.21	0.40
1:A:77:ILE:O	1:A:81:LYS:HG3	2.21	0.40
1:C:83:SER:HA	1:C:84:PRO:HD3	1.88	0.40
1:C:153:ILE:O	1:C:157:ARG:HG2	2.20	0.40
1:C:254:VAL:HG21	1:C:260:PHE:HB2	2.03	0.40
1:D:93:THR:O	1:D:116:ASN:HB2	2.21	0.40
1:B:247:ILE:HA	1:B:248:PRO:HD3	1.95	0.40
1:C:166:VAL:HG23	5:C:665:HOH:O	2.21	0.40
1:C:204:LEU:HB2	1:C:206:TYR:CD1	2.56	0.40
1:A:31:ILE:HG22	1:A:32:THR:N	2.36	0.40

Continued on next page...

Continued from previous page...

Atom-1	Atom-2	Interatomic distance (Å)	Clash overlap (Å)
1:C:142:HIS:HB2	1:C:145:THR:HG21	2.03	0.40
1:D:145:THR:CG2	1:D:226:ILE:CD1	2.99	0.40
1:D:281:GLU:O	1:D:283:LYS:HG3	2.21	0.40
1:D:330:ASN:HA	1:D:331:PRO:HD3	1.94	0.40

There are no symmetry-related clashes.

5.3 Torsion angles [i](#)

5.3.1 Protein backbone [i](#)

In the following table, the Percentiles column shows the percent Ramachandran outliers of the chain as a percentile score with respect to all X-ray entries followed by that with respect to entries of similar resolution.

The Analysed column shows the number of residues for which the backbone conformation was analysed, and the total number of residues.

Mol	Chain	Analysed	Favoured	Allowed	Outliers	Percentiles
1	A	356/358 (99%)	320 (90%)	27 (8%)	9 (2%)	5 9
1	B	356/358 (99%)	322 (90%)	30 (8%)	4 (1%)	14 30
1	C	356/358 (99%)	322 (90%)	30 (8%)	4 (1%)	14 30
1	D	356/358 (99%)	326 (92%)	27 (8%)	3 (1%)	19 39
All	All	1424/1432 (99%)	1290 (91%)	114 (8%)	20 (1%)	11 22

All (20) Ramachandran outliers are listed below:

Mol	Chain	Res	Type
1	A	41	ALA
1	B	254	VAL
1	B	279	ALA
1	C	41	ALA
1	D	234	GLU
1	A	3	THR
1	A	265	SER
1	B	234	GLU
1	B	316	GLY
1	C	136	THR
1	C	316	GLY

Continued on next page...

Continued from previous page...

Mol	Chain	Res	Type
1	D	56	GLY
1	D	253	SER
1	A	255	LYS
1	A	189	ALA
1	A	234	GLU
1	A	249	LYS
1	A	250	PRO
1	A	211	PRO
1	C	250	PRO

5.3.2 Protein sidechains [i](#)

In the following table, the Percentiles column shows the percent sidechain outliers of the chain as a percentile score with respect to all X-ray entries followed by that with respect to entries of similar resolution.

The Analysed column shows the number of residues for which the sidechain conformation was analysed, and the total number of residues.

Mol	Chain	Analysed	Rotameric	Outliers	Percentiles	
1	A	300/300 (100%)	289 (96%)	11 (4%)	34	60
1	B	300/300 (100%)	284 (95%)	16 (5%)	22	45
1	C	300/300 (100%)	292 (97%)	8 (3%)	44	71
1	D	300/300 (100%)	287 (96%)	13 (4%)	29	54
All	All	1200/1200 (100%)	1152 (96%)	48 (4%)	31	57

All (48) residues with a non-rotameric sidechain are listed below:

Mol	Chain	Res	Type
1	A	40	GLU
1	A	42	GLU
1	A	46	ILE
1	A	108	ASN
1	A	123	ASP
1	A	190	ASN
1	A	212	ARG
1	A	256	SER
1	A	267	TYR
1	A	303	GLU
1	A	306	ASP
1	B	54	ASN

Continued on next page...

Continued from previous page...

Mol	Chain	Res	Type
1	B	57	SER
1	B	58	ASP
1	B	94	SER
1	B	116	ASN
1	B	157	ARG
1	B	212	ARG
1	B	243	VAL
1	B	270	ASP
1	B	271	LEU
1	B	280	THR
1	B	282	ASN
1	B	304	LYS
1	B	319	ASN
1	B	320	VAL
1	B	329	THR
1	C	4	LYS
1	C	28	LYS
1	C	190	ASN
1	C	212	ARG
1	C	297	SER
1	C	303	GLU
1	C	306	ASP
1	C	308	SER
1	D	94	SER
1	D	116	ASN
1	D	157	ARG
1	D	186	THR
1	D	191	ASP
1	D	197	VAL
1	D	212	ARG
1	D	240	SER
1	D	243	VAL
1	D	280	THR
1	D	303	GLU
1	D	304	LYS
1	D	324	LYS

Sometimes sidechains can be flipped to improve hydrogen bonding and reduce clashes. All (30) such sidechains are listed below:

Mol	Chain	Res	Type
1	A	7	ASN
1	A	108	ASN

Continued on next page...

Continued from previous page...

Mol	Chain	Res	Type
1	A	133	ASN
1	A	142	HIS
1	A	190	ASN
1	A	309	HIS
1	A	319	ASN
1	A	330	ASN
1	B	92	ASN
1	B	116	ASN
1	B	133	ASN
1	B	137	ASN
1	B	188	GLN
1	B	190	ASN
1	B	309	HIS
1	B	319	ASN
1	B	330	ASN
1	C	7	ASN
1	C	133	ASN
1	C	142	HIS
1	C	161	GLN
1	C	190	ASN
1	C	309	HIS
1	C	330	ASN
1	D	116	ASN
1	D	137	ASN
1	D	182	ASN
1	D	188	GLN
1	D	330	ASN
1	D	335	GLN

5.3.3 RNA [i](#)

There are no RNA molecules in this entry.

5.4 Non-standard residues in protein, DNA, RNA chains [i](#)

There are no non-standard protein/DNA/RNA residues in this entry.

5.5 Carbohydrates [i](#)

There are no monosaccharides in this entry.

5.6 Ligand geometry

Of 6 ligands modelled in this entry, 4 are monoatomic - leaving 2 for Mogul analysis.

In the following table, the Counts columns list the number of bonds (or angles) for which Mogul statistics could be retrieved, the number of bonds (or angles) that are observed in the model and the number of bonds (or angles) that are defined in the Chemical Component Dictionary. The Link column lists molecule types, if any, to which the group is linked. The Z score for a bond length (or angle) is the number of standard deviations the observed value is removed from the expected value. A bond length (or angle) with $|Z| > 2$ is considered an outlier worth inspection. RMSZ is the root-mean-square of all Z scores of the bond lengths (or angles).

Mol	Type	Chain	Res	Link	Bond lengths			Bond angles		
					Counts	RMSZ	# Z > 2	Counts	RMSZ	# Z > 2
4	HSE	D	1301	-	6,7,7	0.96	0	6,8,8	1.28	1 (16%)
3	NDA	D	1300	-	41,47,47	2.12	7 (17%)	48,71,71	1.55	7 (14%)

In the following table, the Chirals column lists the number of chiral outliers, the number of chiral centers analysed, the number of these observed in the model and the number defined in the Chemical Component Dictionary. Similar counts are reported in the Torsion and Rings columns. '-' means no outliers of that kind were identified.

Mol	Type	Chain	Res	Link	Chirals	Torsions	Rings
4	HSE	D	1301	-	-	1/7/7/7	-
3	NDA	D	1300	-	-	6/24/60/60	0/5/5/5

All (7) bond length outliers are listed below:

Mol	Chain	Res	Type	Atoms	Z	Observed(Å)	Ideal(Å)
3	D	1300	NDA	C2N-C3N	6.78	1.51	1.39
3	D	1300	NDA	C4N-C3N	6.21	1.52	1.38
3	D	1300	NDA	C2N-N1N	5.41	1.41	1.35
3	D	1300	NDA	C5N-C4N	5.02	1.49	1.38
3	D	1300	NDA	C6N-N1N	3.68	1.44	1.35
3	D	1300	NDA	C2A-N1A	2.55	1.38	1.33
3	D	1300	NDA	C6N-C5N	-2.44	1.33	1.38

All (8) bond angle outliers are listed below:

Mol	Chain	Res	Type	Atoms	Z	Observed(°)	Ideal(°)
3	D	1300	NDA	C5N-C4N-C3N	-5.02	112.93	120.63
3	D	1300	NDA	C6N-C5N-C4N	4.25	125.62	119.44
3	D	1300	NDA	C6N-N1N-C2N	-4.02	118.31	121.97
3	D	1300	NDA	C5A-C6A-N6A	3.30	125.36	120.35

Continued on next page...

Continued from previous page...

Mol	Chain	Res	Type	Atoms	Z	Observed(°)	Ideal(°)
3	D	1300	NDA	O4B-C1B-C2B	-2.79	102.84	106.93
4	D	1301	HSE	C3-CA-C	2.39	115.99	110.30
3	D	1300	NDA	O2N-PN-O5D	2.18	117.86	107.75
3	D	1300	NDA	C2N-N1N-C1D	2.15	123.92	119.14

There are no chirality outliers.

All (7) torsion outliers are listed below:

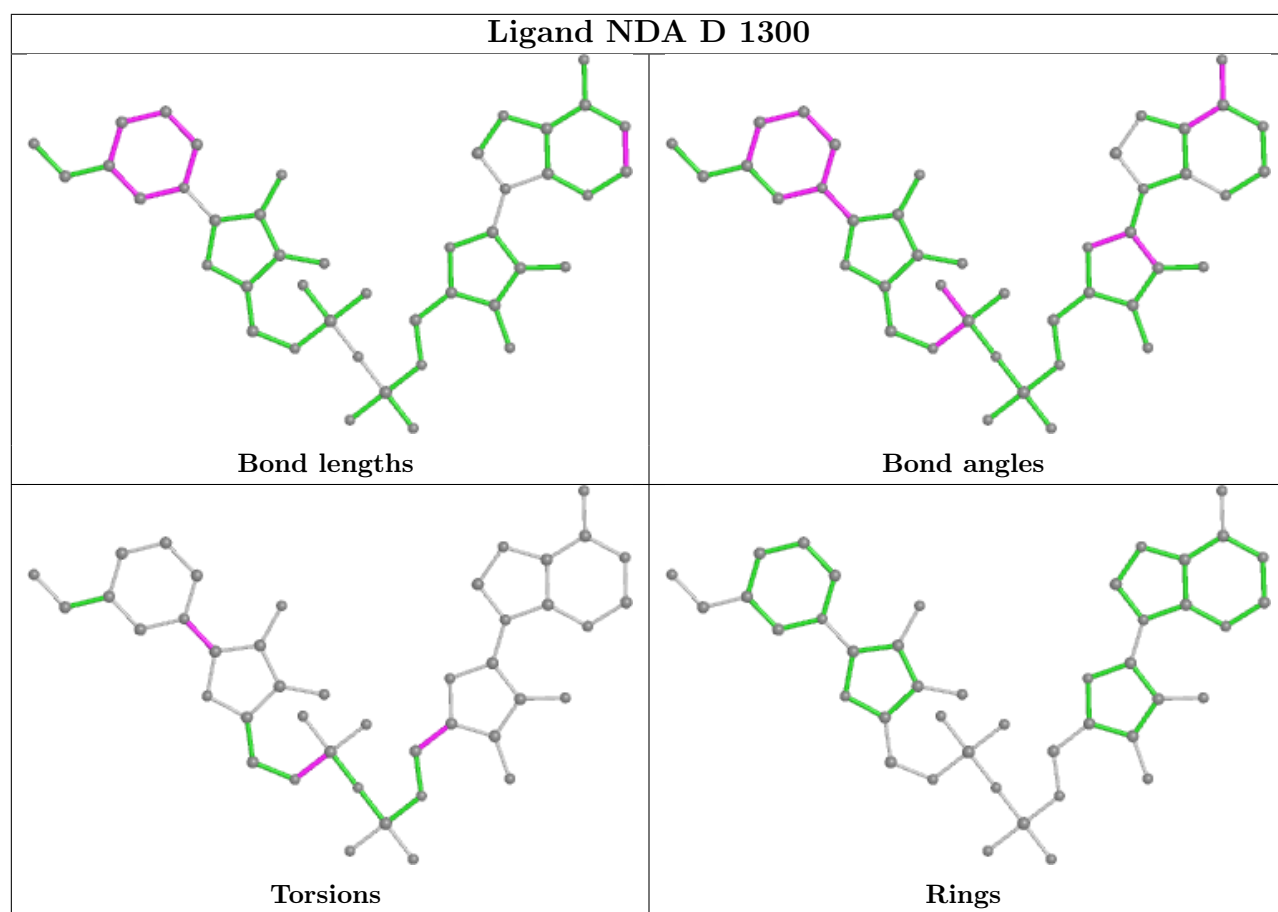
Mol	Chain	Res	Type	Atoms
3	D	1300	NDA	C5D-O5D-PN-O2N
3	D	1300	NDA	O4D-C1D-N1N-C2N
3	D	1300	NDA	O4D-C1D-N1N-C6N
3	D	1300	NDA	C5D-O5D-PN-O3
3	D	1300	NDA	C5D-O5D-PN-O1N
4	D	1301	HSE	O-C-CA-N
3	D	1300	NDA	O4B-C4B-C5B-O5B

There are no ring outliers.

1 monomer is involved in 2 short contacts:

Mol	Chain	Res	Type	Clashes	Symm-Clashes
3	D	1300	NDA	2	0

The following is a two-dimensional graphical depiction of Mogul quality analysis of bond lengths, bond angles, torsion angles, and ring geometry for all instances of the Ligand of Interest. In addition, ligands with molecular weight > 250 and outliers as shown on the validation Tables will also be included. For torsion angles, if less than 5% of the Mogul distribution of torsion angles is within 10 degrees of the torsion angle in question, then that torsion angle is considered an outlier. Any bond that is central to one or more torsion angles identified as an outlier by Mogul will be highlighted in the graph. For rings, the root-mean-square deviation (RMSD) between the ring in question and similar rings identified by Mogul is calculated over all ring torsion angles. If the average RMSD is greater than 60 degrees and the minimal RMSD between the ring in question and any Mogul-identified rings is also greater than 60 degrees, then that ring is considered an outlier. The outliers are highlighted in purple. The color gray indicates Mogul did not find sufficient equivalents in the CSD to analyse the geometry.



5.7 Other polymers [\(i\)](#)

There are no such residues in this entry.

5.8 Polymer linkage issues [\(i\)](#)

There are no chain breaks in this entry.

6 Fit of model and data

6.1 Protein, DNA and RNA chains

In the following table, the column labelled ‘#RSRZ > 2’ contains the number (and percentage) of RSRZ outliers, followed by percent RSRZ outliers for the chain as percentile scores relative to all X-ray entries and entries of similar resolution. The OWAB column contains the minimum, median, 95th percentile and maximum values of the occupancy-weighted average B-factor per residue. The column labelled ‘Q < 0.9’ lists the number of (and percentage) of residues with an average occupancy less than 0.9.

Mol	Chain	Analysed	<RSRZ>	#RSRZ>2	OWAB(Å ²)	Q<0.9
1	A	358/358 (100%)	-0.18	11 (3%) 49 42	9, 25, 72, 94	0
1	B	358/358 (100%)	-0.38	1 (0%) 94 93	8, 22, 56, 83	0
1	C	358/358 (100%)	-0.26	6 (1%) 70 66	8, 25, 66, 93	0
1	D	358/358 (100%)	-0.45	2 (0%) 89 88	7, 22, 42, 75	0
All	All	1432/1432 (100%)	-0.32	20 (1%) 75 71	7, 23, 58, 94	0

All (20) RSRZ outliers are listed below:

Mol	Chain	Res	Type	RSRZ
1	D	2	SER	5.0
1	A	189	ALA	4.9
1	A	133	ASN	4.2
1	A	191	ASP	4.0
1	C	2	SER	3.7
1	C	3	THR	3.6
1	B	2	SER	3.5
1	A	188	GLN	3.5
1	A	190	ASN	3.4
1	C	255	LYS	2.8
1	C	279	ALA	2.7
1	C	189	ALA	2.6
1	C	188	GLN	2.5
1	A	135	PRO	2.4
1	A	257	ALA	2.3
1	A	3	THR	2.3
1	D	3	THR	2.2
1	A	252	GLU	2.1
1	A	249	LYS	2.1
1	A	125	ALA	2.0

6.2 Non-standard residues in protein, DNA, RNA chains [i](#)

There are no non-standard protein/DNA/RNA residues in this entry.

6.3 Carbohydrates [i](#)

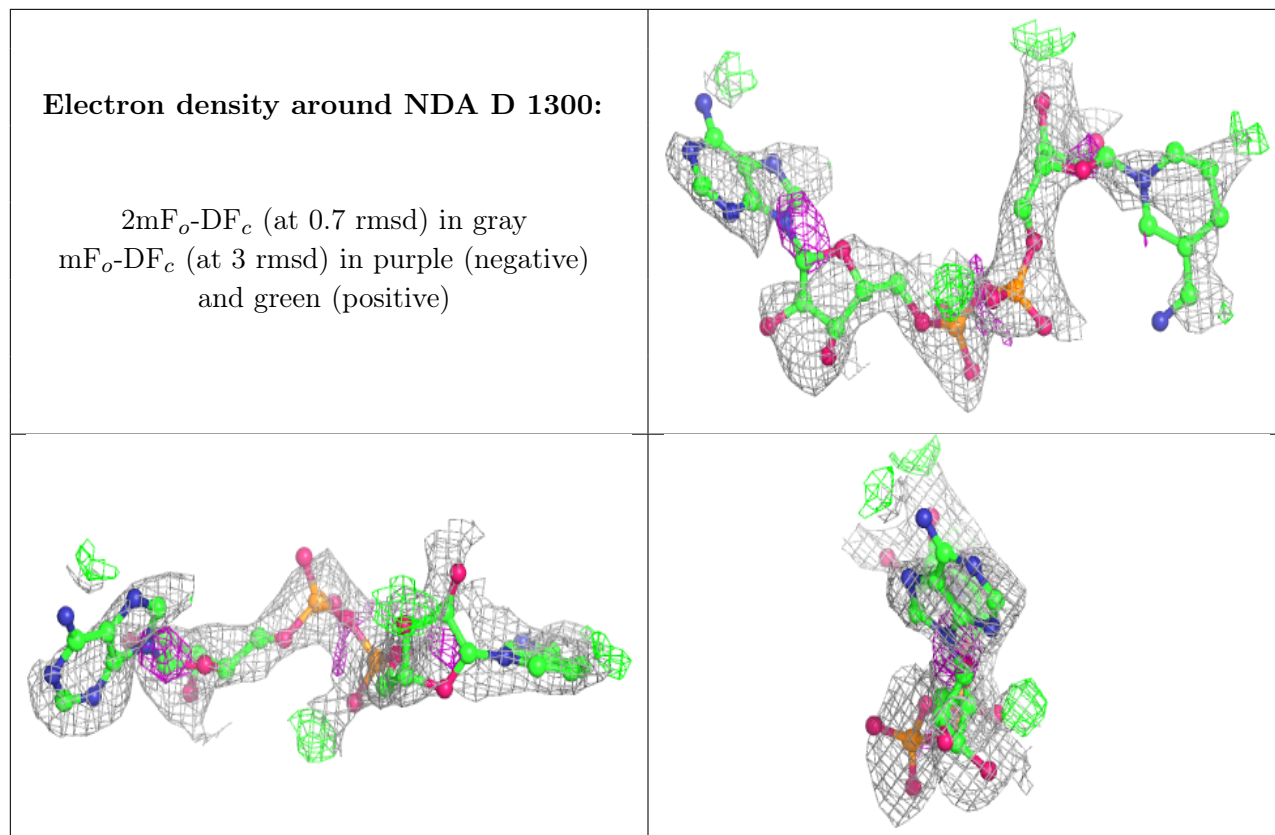
There are no monosaccharides in this entry.

6.4 Ligands [i](#)

In the following table, the Atoms column lists the number of modelled atoms in the group and the number defined in the chemical component dictionary. The B-factors column lists the minimum, median, 95th percentile and maximum values of B factors of atoms in the group. The column labelled 'Q< 0.9' lists the number of atoms with occupancy less than 0.9.

Mol	Type	Chain	Res	Atoms	RSCC	RSR	B-factors(\AA^2)	Q<0.9
4	HSE	D	1301	8/8	0.66	0.33	43,50,61,61	0
3	NDA	D	1300	43/43	0.74	0.34	46,66,83,91	0
2	NA	C	903	1/1	0.88	0.17	22,22,22,22	0
2	NA	A	901	1/1	0.89	0.25	24,24,24,24	0
2	NA	B	902	1/1	0.92	0.13	21,21,21,21	0
2	NA	D	904	1/1	0.94	0.08	16,16,16,16	0

The following is a graphical depiction of the model fit to experimental electron density of all instances of the Ligand of Interest. In addition, ligands with molecular weight > 250 and outliers as shown on the geometry validation Tables will also be included. Each fit is shown from different orientation to approximate a three-dimensional view.



6.5 Other polymers [i](#)

There are no such residues in this entry.