



Full wwPDB X-ray Structure Validation Report ⓘ

Oct 18, 2023 – 09:03 PM EDT

PDB ID : 2E1R
Title : Structure of eEF2 in complex with a sordarin derivative
Authors : Soe, R.; Mosley, R.T.; Andersen, G.R.
Deposited on : 2006-10-27
Resolution : 3.15 Å(reported)

This is a Full wwPDB X-ray Structure Validation Report for a publicly released PDB entry.

We welcome your comments at validation@mail.wwpdb.org

A user guide is available at

<https://www.wwpdb.org/validation/2017/XrayValidationReportHelp>

with specific help available everywhere you see the ⓘ symbol.

The types of validation reports are described at

<http://www.wwpdb.org/validation/2017/FAQs#types>.

The following versions of software and data (see [references ⓘ](#)) were used in the production of this report:

MolProbity : 4.02b-467
Mogul : 1.8.5 (274361), CSD as541be (2020)
Xtriage (Phenix) : 1.13
EDS : 2.36
buster-report : 1.1.7 (2018)
Percentile statistics : 20191225.v01 (using entries in the PDB archive December 25th 2019)
Refmac : 5.8.0158
CCP4 : 7.0.044 (Gargrove)
Ideal geometry (proteins) : Engh & Huber (2001)
Ideal geometry (DNA, RNA) : Parkinson et al. (1996)
Validation Pipeline (wwPDB-VP) : 2.36

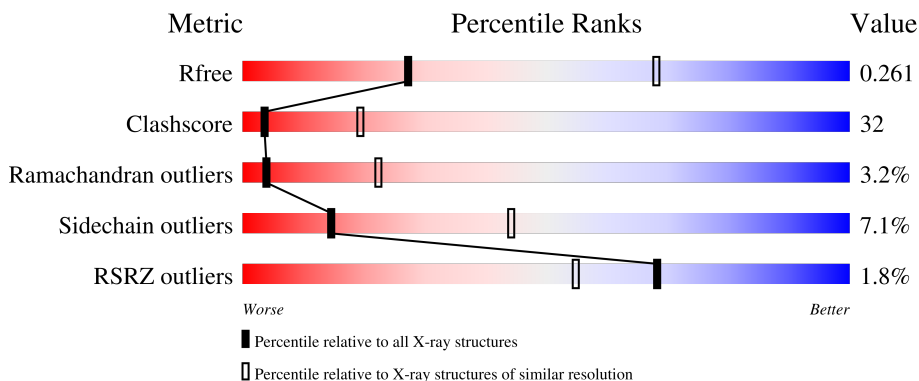
1 Overall quality at a glance

The following experimental techniques were used to determine the structure:

X-RAY DIFFRACTION

The reported resolution of this entry is 3.15 Å.

Percentile scores (ranging between 0-100) for global validation metrics of the entry are shown in the following graphic. The table shows the number of entries on which the scores are based.



Metric	Whole archive (#Entries)	Similar resolution (#Entries, resolution range(Å))
R_{free}	130704	1665 (3.20-3.12)
Clashscore	141614	1804 (3.20-3.12)
Ramachandran outliers	138981	1770 (3.20-3.12)
Sidechain outliers	138945	1769 (3.20-3.12)
RSRZ outliers	127900	1616 (3.20-3.12)

The table below summarises the geometric issues observed across the polymeric chains and their fit to the electron density. The red, orange, yellow and green segments of the lower bar indicate the fraction of residues that contain outliers for ≥ 3 , 2, 1 and 0 types of geometric quality criteria respectively. A grey segment represents the fraction of residues that are not modelled. The numeric value for each fraction is indicated below the corresponding segment, with a dot representing fractions $\leq 5\%$. The upper red bar (where present) indicates the fraction of residues that have poor fit to the electron density. The numeric value is given above the bar.

Mol	Chain	Length	Quality of chain
1	A	842	

2 Entry composition [i](#)

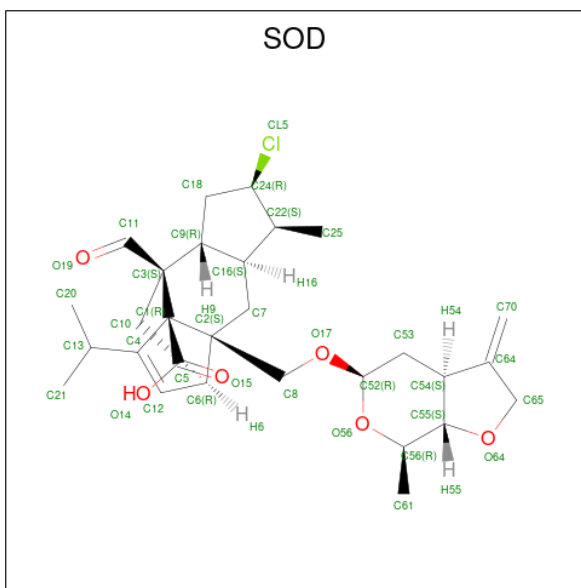
There are 3 unique types of molecules in this entry. The entry contains 6510 atoms, of which 0 are hydrogens and 0 are deuteriums.

In the tables below, the ZeroOcc column contains the number of atoms modelled with zero occupancy, the AltConf column contains the number of residues with at least one atom in alternate conformation and the Trace column contains the number of residues modelled with at most 2 atoms.

- Molecule 1 is a protein called Elongation factor 2.

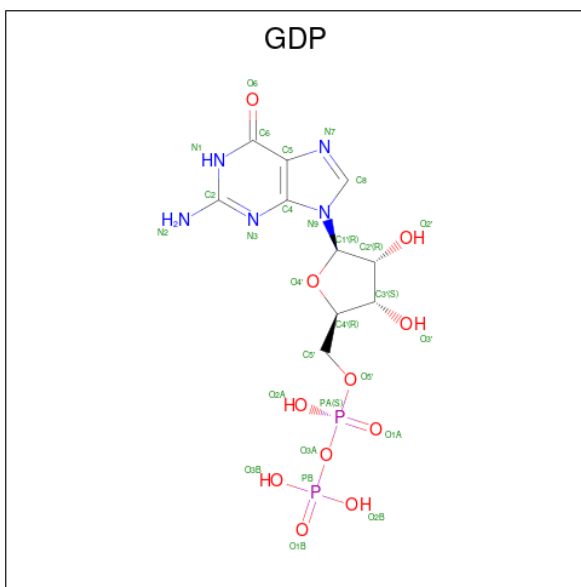
Mol	Chain	Residues	Atoms					ZeroOcc	AltConf	Trace
			Total	C	N	O	S			
1	A	828	6446	4100	1102	1213	31	0	0	0

- Molecule 2 is (1S,4S,5S,6R,9S,11S)-6-CHLORO-9-FORMYL-13-ISOPROPYL-5-METHYL-2-({[(3AR,5R,7R,7AS)-7-METHYL-3-METHYLENEHEXAHYDRO-2H-FURO[2,3-C]PYRAN-5-YL]OXY}METHYL)TETRAACYCLO[7.4.0.0^{2,11}.0^{4,8}]TRIDEC-12-ENE-1-CARBOXYLIC ACI (three-letter code: SOD) (formula: C₂₉H₃₉ClO₆).



Mol	Chain	Residues	Atoms				ZeroOcc	AltConf
			Total	C	Cl	O		
2	A	1	36	29	1	6	0	0

- Molecule 3 is GUANOSINE-5'-DIPHOSPHATE (three-letter code: GDP) (formula: C₁₀H₁₅N₅O₁₁P₂).

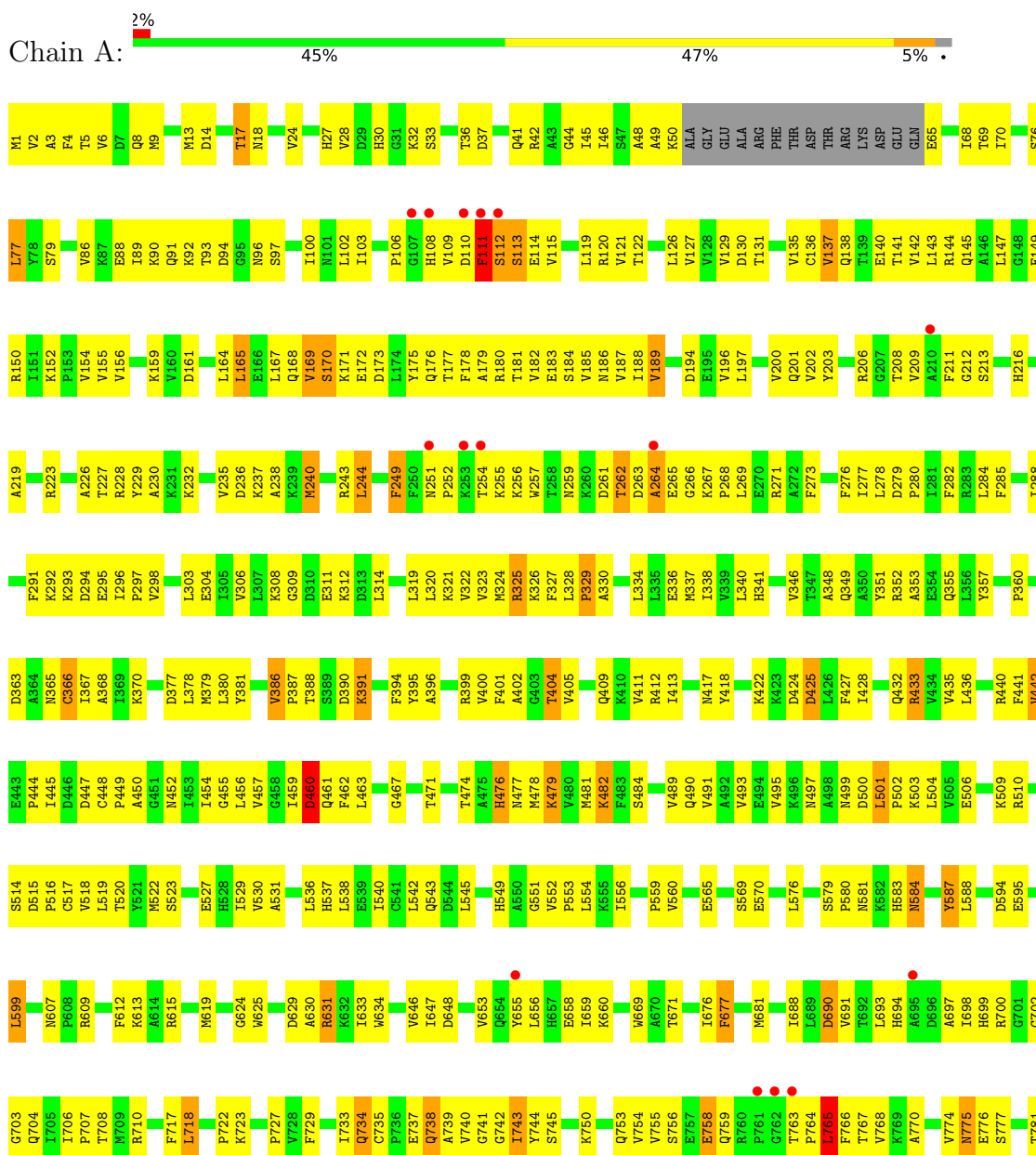


Mol	Chain	Residues	Atoms					ZeroOcc	AltConf
			Total	C	N	O	P		
3	A	1	28	10	5	11	2	0	0

3 Residue-property plots i

These plots are drawn for all protein, RNA, DNA and oligosaccharide chains in the entry. The first graphic for a chain summarises the proportions of the various outlier classes displayed in the second graphic. The second graphic shows the sequence view annotated by issues in geometry and electron density. Residues are color-coded according to the number of geometric quality criteria for which they contain at least one outlier: green = 0, yellow = 1, orange = 2 and red = 3 or more. A red dot above a residue indicates a poor fit to the electron density ($RSRZ > 2$). Stretches of 2 or more consecutive residues without any outlier are shown as a green connector. Residues present in the sample, but not in the model, are shown in grey.

• Molecule 1: Elongation factor 2





4 Data and refinement statistics

Property	Value	Source
Space group	P 21 21 2	Depositor
Cell constants a, b, c, α , β , γ	116.86Å 158.77Å 60.31Å 90.00° 90.00° 90.00°	Depositor
Resolution (Å)	20.00 – 3.15 28.19 – 3.15	Depositor EDS
% Data completeness (in resolution range)	98.1 (20.00-3.15) 98.3 (28.19-3.15)	Depositor EDS
R_{merge}	(Not available)	Depositor
R_{sym}	0.07	Depositor
$\langle I/\sigma(I) \rangle$ ¹	2.66 (at 3.17Å)	Xtrriage
Refinement program	CNS	Depositor
R, R_{free}	0.220 , 0.270 0.212 , 0.261	Depositor DCC
R_{free} test set	957 reflections (4.85%)	wwPDB-VP
Wilson B-factor (Å ²)	66.5	Xtrriage
Anisotropy	0.507	Xtrriage
Bulk solvent k_{sol} (e/Å ³), B_{sol} (Å ²)	0.32 , 64.3	EDS
L-test for twinning ²	$\langle L \rangle = 0.43$, $\langle L^2 \rangle = 0.25$	Xtrriage
Estimated twinning fraction	No twinning to report.	Xtrriage
F_o, F_c correlation	0.91	EDS
Total number of atoms	6510	wwPDB-VP
Average B, all atoms (Å ²)	60.0	wwPDB-VP

Xtrriage's analysis on translational NCS is as follows: *The largest off-origin peak in the Patterson function is 3.12% of the height of the origin peak. No significant pseudotranslation is detected.*

¹Intensities estimated from amplitudes.

²Theoretical values of $\langle |L| \rangle$, $\langle L^2 \rangle$ for acentric reflections are 0.5, 0.333 respectively for untwinned datasets, and 0.375, 0.2 for perfectly twinned datasets.

5 Model quality [i](#)

5.1 Standard geometry [i](#)

Bond lengths and bond angles in the following residue types are not validated in this section: SOD, GDP

The Z score for a bond length (or angle) is the number of standard deviations the observed value is removed from the expected value. A bond length (or angle) with $|Z| > 5$ is considered an outlier worth inspection. RMSZ is the root-mean-square of all Z scores of the bond lengths (or angles).

Mol	Chain	Bond lengths		Bond angles	
		RMSZ	# Z >5	RMSZ	# Z >5
1	A	0.47	0/6570	0.72	4/8895 (0.0%)

There are no bond length outliers.

All (4) bond angle outliers are listed below:

Mol	Chain	Res	Type	Atoms	Z	Observed(°)	Ideal(°)
1	A	111	PHE	CB-CG-CD1	-8.11	115.12	120.80
1	A	111	PHE	CB-CG-CD2	7.11	125.78	120.80
1	A	111	PHE	CB-CA-C	-6.19	98.02	110.40
1	A	484	SER	N-CA-C	-5.38	96.47	111.00

There are no chirality outliers.

There are no planarity outliers.

5.2 Too-close contacts [i](#)

In the following table, the Non-H and H(model) columns list the number of non-hydrogen atoms and hydrogen atoms in the chain respectively. The H(added) column lists the number of hydrogen atoms added and optimized by MolProbity. The Clashes column lists the number of clashes within the asymmetric unit, whereas Symm-Clashes lists symmetry-related clashes.

Mol	Chain	Non-H	H(model)	H(added)	Clashes	Symm-Clashes
1	A	6446	0	6523	413	1
2	A	36	0	37	0	0
3	A	28	0	12	1	0
All	All	6510	0	6572	413	1

The all-atom clashscore is defined as the number of clashes found per 1000 atoms (including hydrogen atoms). The all-atom clashscore for this structure is 32.

All (413) close contacts within the same asymmetric unit are listed below, sorted by their clash magnitude.

Atom-1	Atom-2	Interatomic distance (Å)	Clash overlap (Å)
1:A:27:HIS:HB3	1:A:30:HIS:CD2	1.82	1.15
1:A:542:LEU:HD13	1:A:556:ILE:HD13	1.44	0.98
1:A:185:VAL:O	1:A:189:VAL:HG23	1.64	0.97
1:A:722:PRO:O	1:A:723:LYS:HD2	1.68	0.94
1:A:319:LEU:O	1:A:323:VAL:HG22	1.69	0.92
1:A:763:THR:HG22	1:A:764:PRO:HD2	1.47	0.92
1:A:27:HIS:CD2	1:A:136:CYS:HB2	2.05	0.92
1:A:27:HIS:CB	1:A:30:HIS:CD2	2.52	0.91
1:A:278:LEU:HD22	1:A:282:PHE:HE1	1.35	0.91
1:A:693:LEU:HB3	1:A:700:ARG:HD2	1.50	0.90
1:A:763:THR:CG2	1:A:764:PRO:HD2	2.02	0.90
1:A:612:PHE:CZ	1:A:631:ARG:HB3	2.07	0.90
1:A:706:ILE:HB	1:A:707:PRO:HD3	1.53	0.89
1:A:763:THR:CG2	1:A:764:PRO:CD	2.51	0.88
1:A:655:TYR:O	1:A:658:GLU:HB2	1.73	0.88
1:A:378:LEU:HD22	1:A:409:GLN:HE22	1.38	0.88
1:A:27:HIS:HD2	1:A:136:CYS:HB2	1.35	0.88
1:A:489:VAL:HG22	1:A:781:THR:HG21	1.55	0.87
1:A:277:ILE:O	1:A:280:PRO:HD2	1.74	0.87
1:A:288:ILE:HG12	1:A:296:ILE:HD12	1.57	0.86
1:A:380:LEU:HD12	1:A:405:VAL:HG21	1.57	0.85
1:A:813:SER:O	1:A:817:GLU:HG3	1.77	0.85
1:A:137:VAL:HG23	1:A:138:GLN:H	1.42	0.84
1:A:409:GLN:HE21	1:A:411:VAL:HG22	1.42	0.84
1:A:296:ILE:HB	1:A:297:PRO:HD3	1.60	0.83
1:A:141:THR:O	1:A:144:ARG:HG2	1.80	0.82
1:A:327:PHE:O	1:A:328:LEU:HD23	1.80	0.80
1:A:143:LEU:O	1:A:147:LEU:HG	1.82	0.80
1:A:263:ASP:HB3	1:A:269:LEU:HD21	1.62	0.79
1:A:815:ALA:HA	1:A:818:ILE:HD13	1.63	0.79
1:A:363:ASP:O	1:A:367:ILE:HG12	1.82	0.79
1:A:758:GLU:O	1:A:767:THR:HG22	1.81	0.79
1:A:348:ALA:HA	1:A:351:TYR:CE2	2.19	0.78
1:A:763:THR:HG22	1:A:764:PRO:CD	2.13	0.78
1:A:93:THR:HG22	1:A:94:ASP:H	1.48	0.77
1:A:763:THR:HG23	1:A:764:PRO:CD	2.13	0.77
1:A:400:VAL:HG12	1:A:450:ALA:HA	1.66	0.76
1:A:103:ILE:HD12	1:A:122:THR:HG22	1.66	0.76
1:A:263:ASP:OD1	1:A:267:LYS:HB3	1.86	0.76
1:A:763:THR:HG23	1:A:764:PRO:HD3	1.68	0.76

Continued on next page...

Continued from previous page...

Atom-1	Atom-2	Interatomic distance (Å)	Clash overlap (Å)
1:A:436:LEU:HD21	1:A:445:ILE:HD13	1.66	0.75
1:A:758:GLU:HG3	1:A:767:THR:HG23	1.67	0.75
1:A:545:LEU:HA	1:A:549:HIS:HB2	1.69	0.74
1:A:775:ASN:HD22	1:A:775:ASN:C	1.90	0.74
1:A:111:PHE:CE2	1:A:144:ARG:NH2	2.55	0.74
1:A:321:LYS:HE2	1:A:325:ARG:NH2	2.02	0.74
1:A:186:ASN:HB3	1:A:201:GLN:NE2	2.01	0.73
1:A:360:PRO:HB2	1:A:363:ASP:HB2	1.70	0.72
1:A:32:LYS:O	1:A:36:THR:HG23	1.90	0.72
1:A:109:VAL:HG11	1:A:114:GLU:HG2	1.73	0.71
1:A:127:VAL:HG21	1:A:143:LEU:HD13	1.73	0.70
1:A:515:ASP:O	1:A:518:VAL:HG12	1.91	0.70
1:A:109:VAL:HG11	1:A:114:GLU:CG	2.22	0.70
1:A:149:GLU:HA	1:A:355:GLN:HE22	1.57	0.70
1:A:202:VAL:HG12	1:A:209:VAL:HG23	1.72	0.70
1:A:400:VAL:HG23	1:A:454:ILE:HD11	1.73	0.69
1:A:433:ARG:HB3	1:A:457:VAL:CG1	2.22	0.69
1:A:823:ARG:HE	1:A:832:VAL:HG22	1.56	0.69
1:A:727:PRO:HB2	1:A:774:VAL:HG21	1.75	0.69
1:A:284:LEU:HD11	1:A:303:LEU:HD12	1.73	0.69
1:A:759:GLN:NE2	1:A:764:PRO:HA	2.07	0.69
1:A:758:GLU:HG3	1:A:767:THR:CG2	2.22	0.68
1:A:129:VAL:HG11	1:A:181:THR:HG23	1.75	0.68
1:A:288:ILE:CG1	1:A:296:ILE:HD12	2.22	0.68
1:A:288:ILE:HG23	1:A:319:LEU:HD23	1.73	0.68
1:A:463:LEU:HD21	1:A:467:GLY:HA3	1.75	0.67
1:A:378:LEU:HD22	1:A:409:GLN:NE2	2.10	0.67
1:A:93:THR:HG22	1:A:94:ASP:N	2.09	0.67
1:A:619:MET:O	1:A:625:TRP:HB2	1.94	0.67
1:A:764:PRO:O	1:A:765:LEU:HD23	1.94	0.67
1:A:129:VAL:HG11	1:A:181:THR:CG2	2.26	0.66
1:A:154:VAL:HG11	1:A:337:MET:HB3	1.77	0.66
1:A:743:ILE:HG21	1:A:768:VAL:HG11	1.78	0.66
1:A:103:ILE:HD13	1:A:121:VAL:HG23	1.78	0.66
1:A:500:ASP:HB3	1:A:552:VAL:HG11	1.78	0.66
1:A:491:VAL:HA	1:A:559:PRO:HD3	1.77	0.65
1:A:2:VAL:O	1:A:46:ILE:HG22	1.95	0.65
1:A:379:MET:HB2	1:A:402:ALA:HB3	1.79	0.65
1:A:697:ALA:HA	1:A:700:ARG:NH1	2.11	0.65
1:A:786:GLN:HE21	1:A:786:GLN:HA	1.61	0.65
1:A:767:THR:HG23	1:A:767:THR:O	1.96	0.65

Continued on next page...

Continued from previous page...

Atom-1	Atom-2	Interatomic distance (Å)	Clash overlap (Å)
1:A:106:PRO:HG2	1:A:115:VAL:HG22	1.80	0.64
1:A:501:LEU:HB3	1:A:502:PRO:HD3	1.79	0.64
1:A:9:MET:O	1:A:13:MET:HG3	1.98	0.64
1:A:112:SER:HB2	1:A:791:GLN:OE1	1.98	0.64
1:A:17:THR:HG21	1:A:92:LYS:HG3	1.80	0.64
1:A:400:VAL:CG2	1:A:454:ILE:HD11	2.28	0.62
1:A:669:TRP:CZ3	1:A:710:ARG:HD2	2.34	0.62
1:A:786:GLN:HE21	1:A:786:GLN:CA	2.12	0.62
1:A:733:ILE:HD13	1:A:794:PRO:HA	1.80	0.62
1:A:514:SER:O	1:A:516:PRO:HD3	2.00	0.62
1:A:149:GLU:HA	1:A:355:GLN:NE2	2.14	0.62
1:A:111:PHE:CZ	1:A:144:ARG:NH2	2.68	0.62
1:A:646:VAL:CG1	1:A:688:ILE:HD11	2.31	0.61
1:A:615:ARG:HG2	1:A:619:MET:CE	2.30	0.61
1:A:229:TYR:HE2	1:A:276:PHE:HB3	1.66	0.61
1:A:249:PHE:N	1:A:249:PHE:CD2	2.69	0.61
1:A:412:ARG:HG2	1:A:428:ILE:CD1	2.31	0.60
1:A:694:HIS:O	1:A:700:ARG:HD3	2.02	0.60
1:A:28:VAL:HG23	1:A:138:GLN:OE1	2.02	0.60
1:A:295:GLU:O	1:A:298:VAL:HG22	2.01	0.60
1:A:432:GLN:HB2	1:A:457:VAL:O	2.02	0.60
1:A:417:ASN:HB2	1:A:425:ASP:OD2	2.00	0.60
1:A:100:ILE:HD12	1:A:338:ILE:HG21	1.82	0.60
1:A:279:ASP:HB3	1:A:280:PRO:HD3	1.84	0.60
1:A:4:PHE:C	1:A:48:ALA:HB2	2.22	0.60
1:A:159:LYS:HG2	3:A:902:GDP:C6	2.36	0.60
1:A:219:ALA:HB3	1:A:330:ALA:HA	1.83	0.60
1:A:411:VAL:HG12	1:A:412:ARG:N	2.16	0.59
1:A:27:HIS:CB	1:A:30:HIS:HD2	2.14	0.59
1:A:261:ASP:O	1:A:262:THR:HG23	2.02	0.59
1:A:27:HIS:ND1	1:A:28:VAL:N	2.50	0.59
1:A:409:GLN:HE21	1:A:411:VAL:CG2	2.15	0.59
1:A:733:ILE:O	1:A:767:THR:HA	2.03	0.59
1:A:738:GLN:HE21	1:A:739:ALA:HB2	1.68	0.58
1:A:137:VAL:HG23	1:A:138:GLN:N	2.15	0.58
1:A:796:MET:O	1:A:797:VAL:HG23	2.03	0.58
1:A:478:MET:O	1:A:479:LYS:C	2.42	0.58
1:A:165:LEU:O	1:A:168:GLN:NE2	2.37	0.58
1:A:764:PRO:O	1:A:765:LEU:CD2	2.52	0.58
1:A:380:LEU:HD12	1:A:405:VAL:CG2	2.32	0.58
1:A:806:SER:HB2	1:A:813:SER:HB2	1.85	0.58

Continued on next page...

Continued from previous page...

Atom-1	Atom-2	Interatomic distance (Å)	Clash overlap (Å)
1:A:42:ARG:HH11	1:A:42:ARG:HG3	1.69	0.58
1:A:180:ARG:O	1:A:183:GLU:N	2.37	0.57
1:A:228:ARG:HG3	1:A:228:ARG:HH11	1.68	0.57
1:A:495:VAL:HG13	1:A:504:LEU:HD22	1.85	0.57
1:A:4:PHE:O	1:A:48:ALA:HB2	2.04	0.57
1:A:167:LEU:HB3	1:A:169:VAL:HG23	1.86	0.57
1:A:227:THR:OG1	1:A:237:LYS:HD3	2.03	0.57
1:A:292:LYS:O	1:A:294:ASP:N	2.37	0.57
1:A:357:TYR:CD2	1:A:366:CYS:HB2	2.39	0.57
1:A:584:ASN:N	1:A:584:ASN:OD1	2.37	0.57
1:A:482:LYS:HB2	1:A:793:PHE:CZ	2.38	0.57
1:A:448:CYS:SG	1:A:452:ASN:HB2	2.45	0.57
1:A:321:LYS:HE2	1:A:325:ARG:HH21	1.69	0.57
1:A:815:ALA:CA	1:A:818:ILE:HD13	2.35	0.56
1:A:655:TYR:HB2	1:A:693:LEU:HD12	1.88	0.56
1:A:33:SER:O	1:A:37:ASP:HB2	2.06	0.56
1:A:607:ASN:O	1:A:615:ARG:HD2	2.06	0.56
1:A:786:GLN:HA	1:A:786:GLN:NE2	2.20	0.56
1:A:404:THR:HB	1:A:449:PRO:HA	1.87	0.56
1:A:823:ARG:NE	1:A:832:VAL:HG22	2.20	0.56
1:A:615:ARG:HG2	1:A:619:MET:HE1	1.87	0.56
1:A:3:ALA:O	1:A:4:PHE:HD1	1.89	0.56
1:A:89:ILE:HG12	1:A:340:LEU:HD23	1.87	0.56
1:A:229:TYR:CE2	1:A:276:PHE:HB3	2.41	0.55
1:A:320:LEU:O	1:A:324:MET:HB2	2.05	0.55
1:A:734:GLN:HA	1:A:766:PHE:O	2.07	0.55
1:A:325:ARG:O	1:A:329:PRO:HG3	2.05	0.55
1:A:565:GLU:O	1:A:681:MET:HA	2.07	0.55
1:A:565:GLU:HG2	1:A:676:ILE:HD12	1.88	0.55
1:A:208:THR:HG22	1:A:341:HIS:CG	2.42	0.55
1:A:576:LEU:CD1	1:A:842:LEU:HD22	2.36	0.55
1:A:45:ILE:HD12	1:A:76:SER:HB3	1.89	0.55
1:A:237:LYS:O	1:A:238:ALA:C	2.45	0.55
1:A:322:VAL:HA	1:A:325:ARG:HD2	1.89	0.55
1:A:500:ASP:CB	1:A:552:VAL:HG11	2.37	0.55
1:A:396:ALA:HB3	1:A:456:LEU:HB2	1.89	0.54
1:A:164:LEU:HD12	1:A:285:PHE:CZ	2.43	0.54
1:A:278:LEU:HD22	1:A:282:PHE:CE1	2.28	0.54
1:A:584:ASN:HD21	1:A:700:ARG:HG2	1.73	0.54
1:A:325:ARG:HG2	1:A:326:LYS:N	2.23	0.54
1:A:436:LEU:CD2	1:A:445:ILE:HD13	2.36	0.54

Continued on next page...

Continued from previous page...

Atom-1	Atom-2	Interatomic distance (Å)	Clash overlap (Å)
1:A:506:GLU:O	1:A:509:LYS:HG2	2.08	0.54
1:A:831:GLU:O	1:A:833:PRO:HD3	2.07	0.54
1:A:277:ILE:HG22	1:A:278:LEU:N	2.23	0.53
1:A:433:ARG:HB3	1:A:457:VAL:HG11	1.88	0.53
1:A:727:PRO:HB2	1:A:774:VAL:CG2	2.38	0.53
1:A:565:GLU:CD	1:A:676:ILE:HB	2.29	0.53
1:A:497:ASN:OD1	1:A:499:ASN:HB2	2.08	0.53
1:A:523:SER:HB3	1:A:529:ILE:CD1	2.38	0.53
1:A:646:VAL:HG13	1:A:688:ILE:HD11	1.90	0.53
1:A:108:HIS:O	1:A:108:HIS:ND1	2.42	0.53
1:A:161:ASP:O	1:A:165:LEU:HD22	2.09	0.53
1:A:727:PRO:HG3	1:A:801:TRP:CZ3	2.43	0.53
1:A:186:ASN:HB3	1:A:201:GLN:HE21	1.71	0.53
1:A:380:LEU:CD1	1:A:405:VAL:HG21	2.35	0.53
1:A:435:VAL:HG12	1:A:444:PRO:HA	1.90	0.53
1:A:5:THR:HG23	1:A:8:GLN:OE1	2.08	0.53
1:A:226:ALA:O	1:A:230:ALA:HB2	2.09	0.53
1:A:729:PHE:CE2	1:A:774:VAL:HG13	2.44	0.53
1:A:88:GLU:OE1	1:A:223:ARG:NH1	2.42	0.52
1:A:520:THR:HA	1:A:529:ILE:O	2.10	0.52
1:A:17:THR:HG23	1:A:346:VAL:HG21	1.92	0.52
1:A:688:ILE:HD12	1:A:688:ILE:N	2.25	0.52
1:A:656:LEU:C	1:A:658:GLU:N	2.63	0.51
1:A:152:LYS:HG3	1:A:200:VAL:CG2	2.40	0.51
1:A:303:LEU:O	1:A:304:GLU:HB2	2.10	0.51
1:A:428:ILE:HG22	1:A:428:ILE:O	2.10	0.51
1:A:112:SER:HB2	1:A:791:GLN:CD	2.31	0.51
1:A:100:ILE:HD12	1:A:338:ILE:CG2	2.40	0.51
1:A:131:THR:O	1:A:177:THR:HG21	2.09	0.51
1:A:112:SER:O	1:A:791:GLN:NE2	2.44	0.51
1:A:493:VAL:HG21	1:A:530:VAL:HG23	1.91	0.51
1:A:481:MET:HA	1:A:482:LYS:NZ	2.26	0.51
1:A:308:LYS:O	1:A:311:GLU:HG3	2.11	0.51
1:A:474:THR:HG22	1:A:474:THR:O	2.11	0.51
1:A:775:ASN:C	1:A:775:ASN:ND2	2.62	0.51
1:A:411:VAL:CG1	1:A:412:ARG:N	2.74	0.50
1:A:396:ALA:O	1:A:455:GLY:HA2	2.11	0.50
1:A:717:PHE:HD2	1:A:718:LEU:HD13	1.76	0.50
1:A:436:LEU:O	1:A:442:VAL:HA	2.11	0.50
1:A:607:ASN:O	1:A:615:ARG:CD	2.60	0.50
1:A:595:GLU:OE1	1:A:599:LEU:HD22	2.11	0.50

Continued on next page...

Continued from previous page...

Atom-1	Atom-2	Interatomic distance (Å)	Clash overlap (Å)
1:A:669:TRP:CE3	1:A:710:ARG:HD2	2.46	0.50
1:A:579:SER:HB2	1:A:704:GLN:O	2.12	0.50
1:A:249:PHE:CZ	1:A:261:ASP:HB3	2.47	0.50
1:A:308:LYS:HG2	1:A:311:GLU:OE1	2.11	0.50
1:A:536:LEU:O	1:A:540:ILE:HG12	2.12	0.50
1:A:178:PHE:O	1:A:182:VAL:HG23	2.11	0.50
1:A:702:GLY:C	1:A:704:GLN:H	2.16	0.50
1:A:753:GLN:O	1:A:770:ALA:HB1	2.12	0.49
1:A:138:GLN:O	1:A:142:VAL:HG23	2.12	0.49
1:A:706:ILE:CB	1:A:707:PRO:HD3	2.35	0.49
1:A:759:GLN:HE21	1:A:764:PRO:HA	1.77	0.49
1:A:27:HIS:CD2	1:A:136:CYS:CB	2.89	0.49
1:A:360:PRO:O	1:A:363:ASP:HB3	2.12	0.49
1:A:149:GLU:O	1:A:352:ARG:NH1	2.44	0.49
1:A:656:LEU:C	1:A:658:GLU:H	2.16	0.49
1:A:819:VAL:O	1:A:822:ALA:HB3	2.13	0.49
1:A:212:GLY:HA3	1:A:219:ALA:HA	1.95	0.49
1:A:357:TYR:OH	1:A:476:HIS:HB2	2.12	0.49
1:A:653:VAL:HB	1:A:656:LEU:HB2	1.94	0.48
1:A:489:VAL:HG12	1:A:538:LEU:HD22	1.95	0.48
1:A:175:TYR:CD2	1:A:175:TYR:C	2.87	0.48
1:A:203:TYR:HB2	1:A:206:ARG:HD2	1.95	0.48
1:A:213:SER:OG	1:A:216:HIS:HB2	2.13	0.48
1:A:334:LEU:O	1:A:338:ILE:HG13	2.13	0.48
1:A:378:LEU:H	1:A:471:THR:CG2	2.27	0.48
1:A:378:LEU:HB3	1:A:471:THR:HB	1.94	0.48
1:A:818:ILE:HD12	1:A:818:ILE:H	1.77	0.48
1:A:518:VAL:HG22	1:A:519:LEU:N	2.28	0.48
1:A:493:VAL:HG21	1:A:530:VAL:CG2	2.44	0.48
1:A:579:SER:OG	1:A:581:ASN:HB2	2.12	0.48
1:A:482:LYS:H	1:A:482:LYS:HZ2	1.60	0.48
1:A:581:ASN:HB3	1:A:583:HIS:HB2	1.94	0.48
1:A:110:ASP:HB3	1:A:789:GLY:HA2	1.96	0.48
1:A:176:GLN:O	1:A:179:ALA:HB3	2.13	0.48
1:A:481:MET:HA	1:A:482:LYS:HZ1	1.78	0.48
1:A:523:SER:HB3	1:A:529:ILE:HD11	1.96	0.48
1:A:77:LEU:HB2	1:A:100:ILE:HB	1.96	0.48
1:A:18:ASN:ND2	1:A:97:SER:O	2.43	0.47
1:A:612:PHE:CZ	1:A:631:ARG:CB	2.91	0.47
1:A:273:PHE:O	1:A:277:ILE:HB	2.14	0.47
1:A:744:TYR:CE1	1:A:754:VAL:HG21	2.49	0.47

Continued on next page...

Continued from previous page...

Atom-1	Atom-2	Interatomic distance (Å)	Clash overlap (Å)
1:A:88:GLU:CD	1:A:223:ARG:NH1	2.68	0.47
1:A:171:LYS:HG2	1:A:282:PHE:CE1	2.50	0.47
1:A:690:ASP:OD1	1:A:691:VAL:N	2.47	0.47
1:A:135:VAL:HG13	1:A:135:VAL:O	2.15	0.47
1:A:251:ASN:HB3	1:A:254:THR:OG1	2.15	0.47
1:A:750:LYS:HD3	1:A:776:GLU:O	2.15	0.47
1:A:170:SER:OG	1:A:171:LYS:N	2.47	0.47
1:A:418:TYR:HA	1:A:424:ASP:O	2.15	0.47
1:A:463:LEU:HD21	1:A:467:GLY:CA	2.44	0.47
1:A:493:VAL:CG2	1:A:530:VAL:HG23	2.45	0.47
1:A:579:SER:HB2	1:A:580:PRO:HD2	1.96	0.47
1:A:754:VAL:HA	1:A:770:ALA:HB2	1.95	0.47
1:A:839:TYR:HE2	1:A:841:LYS:HA	1.78	0.47
1:A:278:LEU:O	1:A:282:PHE:HD1	1.97	0.47
1:A:413:ILE:HG23	1:A:463:LEU:HD13	1.97	0.47
1:A:656:LEU:O	1:A:658:GLU:N	2.48	0.47
1:A:841:LYS:NZ	1:A:842:LEU:HD23	2.30	0.47
1:A:49:ALA:O	1:A:50:LYS:HG2	2.15	0.47
1:A:88:GLU:CD	1:A:223:ARG:HH11	2.18	0.47
1:A:669:TRP:CH2	1:A:710:ARG:HD2	2.50	0.47
1:A:1:MET:HB2	1:A:44:GLY:O	2.15	0.46
1:A:189:VAL:CG1	1:A:200:VAL:HG13	2.45	0.46
1:A:169:VAL:HG12	1:A:170:SER:N	2.30	0.46
1:A:412:ARG:NH2	1:A:418:TYR:OH	2.48	0.46
1:A:737:GLU:HA	1:A:766:PHE:CD2	2.50	0.46
1:A:671:THR:HA	1:A:681:MET:HG3	1.98	0.46
1:A:142:VAL:O	1:A:145:GLN:HB2	2.16	0.46
1:A:349:GLN:O	1:A:370:LYS:HA	2.15	0.46
1:A:750:LYS:HB3	1:A:776:GLU:HB3	1.97	0.46
1:A:243:ARG:NH1	1:A:257:TRP:NE1	2.64	0.46
1:A:183:GLU:O	1:A:187:VAL:HG23	2.15	0.46
1:A:612:PHE:CE1	1:A:631:ARG:HA	2.51	0.46
1:A:155:VAL:CG1	1:A:156:VAL:N	2.79	0.46
1:A:377:ASP:OD1	1:A:471:THR:HG23	2.16	0.46
1:A:755:VAL:HG12	1:A:756:SER:N	2.31	0.46
1:A:6:VAL:CG1	1:A:445:ILE:HG22	2.46	0.46
1:A:461:GLN:HG3	1:A:462:PHE:CE1	2.51	0.46
1:A:587:TYR:CD2	1:A:587:TYR:N	2.84	0.46
1:A:357:TYR:CZ	1:A:476:HIS:HB2	2.51	0.45
1:A:588:LEU:HD12	1:A:588:LEU:C	2.37	0.45
1:A:3:ALA:HA	1:A:46:ILE:HG22	1.98	0.45

Continued on next page...

Continued from previous page...

Atom-1	Atom-2	Interatomic distance (Å)	Clash overlap (Å)
1:A:288:ILE:CD1	1:A:323:VAL:HG21	2.47	0.45
1:A:490:GLN:HB3	1:A:531:ALA:CB	2.46	0.45
1:A:659:ILE:HD13	1:A:693:LEU:HD21	1.99	0.45
1:A:292:LYS:C	1:A:294:ASP:H	2.19	0.45
1:A:378:LEU:N	1:A:471:THR:HG22	2.32	0.45
1:A:495:VAL:CG1	1:A:504:LEU:HB2	2.47	0.45
1:A:262:THR:HA	1:A:267:LYS:O	2.17	0.45
1:A:445:ILE:HD12	1:A:447:ASP:O	2.17	0.45
1:A:263:ASP:O	1:A:265:GLU:N	2.50	0.45
1:A:742:GLY:HA2	1:A:745:SER:HB3	1.99	0.45
1:A:181:THR:O	1:A:185:VAL:HG23	2.17	0.45
1:A:629:ASP:O	1:A:630:ALA:C	2.53	0.45
1:A:353:ALA:CB	1:A:370:LYS:HG3	2.47	0.45
1:A:633:ILE:C	1:A:633:ILE:HD12	2.37	0.45
1:A:378:LEU:HD11	1:A:405:VAL:HG22	1.99	0.45
1:A:13:MET:CE	1:A:452:ASN:HD22	2.30	0.44
1:A:196:VAL:HG12	1:A:196:VAL:O	2.17	0.44
1:A:634:TRP:CZ3	1:A:660:LYS:HA	2.52	0.44
1:A:697:ALA:CA	1:A:700:ARG:NH1	2.79	0.44
1:A:380:LEU:HD23	1:A:381:TYR:N	2.32	0.44
1:A:609:ARG:O	1:A:609:ARG:HG3	2.17	0.44
1:A:648:ASP:OD1	1:A:648:ASP:C	2.56	0.44
1:A:140:GLU:HG3	1:A:188:ILE:CD1	2.47	0.44
1:A:169:VAL:HG13	1:A:173:ASP:CB	2.47	0.44
1:A:360:PRO:CB	1:A:363:ASP:HB2	2.44	0.44
1:A:391:LYS:O	1:A:391:LYS:HG3	2.18	0.44
1:A:155:VAL:HG12	1:A:156:VAL:N	2.32	0.44
1:A:418:TYR:HB3	1:A:477:ASN:HD21	1.83	0.44
1:A:448:CYS:HB3	1:A:454:ILE:HD13	1.99	0.44
1:A:27:HIS:HB2	1:A:30:HIS:HD2	1.82	0.44
1:A:202:VAL:HG12	1:A:209:VAL:CG2	2.45	0.44
1:A:365:ASN:O	1:A:367:ILE:N	2.51	0.44
1:A:380:LEU:HD23	1:A:380:LEU:C	2.38	0.44
1:A:553:PRO:O	1:A:554:LEU:HD23	2.18	0.44
1:A:785:ARG:HG3	1:A:790:GLY:HA2	2.00	0.44
1:A:1:MET:SD	1:A:1:MET:N	2.80	0.44
1:A:119:LEU:O	1:A:121:VAL:N	2.51	0.44
1:A:291:PHE:N	1:A:291:PHE:CD2	2.85	0.44
1:A:386:VAL:HA	1:A:387:PRO:HD3	1.77	0.44
1:A:194:ASP:HB2	1:A:197:LEU:HG	2.00	0.43
1:A:278:LEU:CD2	1:A:282:PHE:HE1	2.20	0.43

Continued on next page...

Continued from previous page...

Atom-1	Atom-2	Interatomic distance (Å)	Clash overlap (Å)
1:A:348:ALA:HA	1:A:351:TYR:CZ	2.53	0.43
1:A:1:MET:HE3	1:A:41:GLN:O	2.18	0.43
1:A:759:GLN:OE1	1:A:766:PHE:CZ	2.71	0.43
1:A:86:VAL:HG12	1:A:86:VAL:O	2.18	0.43
1:A:255:LYS:C	1:A:256:LYS:HG3	2.39	0.43
1:A:399:ARG:HD3	1:A:401:PHE:CZ	2.53	0.43
1:A:506:GLU:O	1:A:510:ARG:HG3	2.19	0.43
1:A:581:ASN:CG	1:A:704:GLN:OE1	2.57	0.43
1:A:412:ARG:HG2	1:A:428:ILE:HD13	1.98	0.43
1:A:579:SER:C	1:A:581:ASN:H	2.21	0.43
1:A:677:PHE:N	1:A:677:PHE:CD2	2.86	0.43
1:A:126:LEU:HD11	1:A:156:VAL:CG2	2.48	0.43
1:A:263:ASP:OD1	1:A:267:LYS:CB	2.62	0.43
1:A:24:VAL:HG21	1:A:36:THR:HG22	2.00	0.43
1:A:93:THR:CG2	1:A:94:ASP:H	2.23	0.43
1:A:551:GLY:O	1:A:552:VAL:HG23	2.19	0.43
1:A:738:GLN:HG3	1:A:739:ALA:N	2.33	0.43
1:A:27:HIS:HB2	1:A:30:HIS:CD2	2.45	0.43
1:A:90:LYS:O	1:A:91:GLN:HB2	2.19	0.43
1:A:240:MET:O	1:A:244:LEU:HG	2.18	0.43
1:A:263:ASP:O	1:A:266:GLY:N	2.45	0.43
1:A:309:GLY:O	1:A:312:LYS:HG3	2.19	0.43
1:A:688:ILE:HD12	1:A:688:ILE:H	1.84	0.43
1:A:599:LEU:HD12	1:A:599:LEU:HA	1.93	0.42
1:A:784:LEU:HD23	1:A:794:PRO:HD3	2.01	0.42
1:A:818:ILE:HD12	1:A:818:ILE:N	2.34	0.42
1:A:669:TRP:CE2	1:A:710:ARG:NH1	2.86	0.42
1:A:706:ILE:HB	1:A:707:PRO:CD	2.38	0.42
1:A:490:GLN:HB3	1:A:531:ALA:HB2	2.01	0.42
1:A:114:GLU:CD	1:A:114:GLU:H	2.23	0.42
1:A:169:VAL:CG1	1:A:170:SER:N	2.82	0.42
1:A:263:ASP:O	1:A:264:ALA:C	2.58	0.42
1:A:500:ASP:O	1:A:501:LEU:C	2.58	0.42
1:A:93:THR:CG2	1:A:94:ASP:N	2.79	0.42
1:A:424:ASP:O	1:A:425:ASP:HB2	2.18	0.42
1:A:495:VAL:HG13	1:A:504:LEU:CD2	2.49	0.42
1:A:739:ALA:C	1:A:741:GLY:H	2.22	0.42
1:A:813:SER:O	1:A:814:LYS:C	2.57	0.42
1:A:211:PHE:CD2	1:A:211:PHE:N	2.87	0.42
1:A:228:ARG:HG3	1:A:228:ARG:NH1	2.35	0.42
1:A:527:GLU:OE2	1:A:560:VAL:HG23	2.20	0.42

Continued on next page...

Continued from previous page...

Atom-1	Atom-2	Interatomic distance (Å)	Clash overlap (Å)
1:A:576:LEU:HD12	1:A:839:TYR:CE2	2.54	0.42
1:A:698:ILE:HG23	1:A:699:HIS:CE1	2.55	0.42
1:A:296:ILE:HB	1:A:297:PRO:CD	2.43	0.41
1:A:418:TYR:HD2	1:A:477:ASN:ND2	2.18	0.41
1:A:739:ALA:C	1:A:741:GLY:N	2.72	0.41
1:A:177:THR:O	1:A:178:PHE:C	2.58	0.41
1:A:129:VAL:HG12	1:A:130:ASP:N	2.36	0.41
1:A:284:LEU:HD11	1:A:303:LEU:CD1	2.46	0.41
1:A:576:LEU:HD13	1:A:842:LEU:HD22	2.03	0.41
1:A:365:ASN:O	1:A:368:ALA:N	2.54	0.41
1:A:569:SER:OG	1:A:570:GLU:N	2.53	0.41
1:A:235:VAL:HG12	1:A:236:ASP:N	2.35	0.41
1:A:440:ARG:NH2	1:A:441:PHE:CZ	2.88	0.41
1:A:459:ILE:O	1:A:460:ASP:C	2.59	0.41
1:A:314:LEU:HD11	1:A:322:VAL:HG21	2.02	0.41
1:A:267:LYS:HA	1:A:268:PRO:HD3	1.76	0.41
1:A:517:CYS:O	1:A:537:HIS:HE1	2.04	0.41
1:A:727:PRO:C	1:A:774:VAL:HG23	2.41	0.41
1:A:42:ARG:HG3	1:A:42:ARG:NH1	2.35	0.41
1:A:102:LEU:HD12	1:A:102:LEU:HA	1.88	0.41
1:A:111:PHE:HE2	1:A:141:THR:CG2	2.34	0.41
1:A:141:THR:O	1:A:145:GLN:HG3	2.21	0.41
1:A:180:ARG:O	1:A:181:THR:C	2.59	0.41
1:A:804:LEU:HD12	1:A:815:ALA:HB2	2.02	0.41
1:A:836:GLN:H	1:A:836:GLN:CD	2.21	0.41
1:A:140:GLU:HG3	1:A:188:ILE:HD12	2.02	0.40
1:A:150:ARG:CG	1:A:197:LEU:HD11	2.51	0.40
1:A:200:VAL:O	1:A:200:VAL:HG22	2.21	0.40
1:A:252:PRO:O	1:A:255:LYS:HG2	2.21	0.40
1:A:68:ILE:HD11	1:A:390:ASP:HB2	2.02	0.40
1:A:109:VAL:HG12	1:A:110:ASP:N	2.36	0.40
1:A:172:GLU:CD	1:A:271:ARG:HH21	2.24	0.40
1:A:579:SER:HG	1:A:581:ASN:HB2	1.85	0.40
1:A:740:VAL:HG21	1:A:766:PHE:CD2	2.56	0.40
1:A:743:ILE:N	1:A:743:ILE:CD1	2.84	0.40
1:A:819:VAL:O	1:A:820:LEU:C	2.59	0.40
1:A:65:GLU:OE1	1:A:65:GLU:HA	2.21	0.40
1:A:126:LEU:HD11	1:A:156:VAL:HG23	2.04	0.40
1:A:394:PHE:C	1:A:395:TYR:HD1	2.25	0.40
1:A:576:LEU:HD11	1:A:842:LEU:HD22	2.03	0.40
1:A:69:THR:CG2	1:A:70:ILE:N	2.85	0.40

Continued on next page...

Continued from previous page...

Atom-1	Atom-2	Interatomic distance (Å)	Clash overlap (Å)
1:A:119:LEU:O	1:A:122:THR:N	2.44	0.40
1:A:413:ILE:HB	1:A:427:PHE:HB2	2.03	0.40
1:A:523:SER:HB3	1:A:529:ILE:HD12	2.04	0.40
1:A:814:LYS:O	1:A:818:ILE:HD12	2.21	0.40

All (1) symmetry-related close contacts are listed below. The label for Atom-2 includes the symmetry operator and encoded unit-cell translations to be applied.

Atom-1	Atom-2	Interatomic distance (Å)	Clash overlap (Å)
1:A:503:LYS:NZ	1:A:503:LYS:NZ[2_545]	1.86	0.34

5.3 Torsion angles [i](#)

5.3.1 Protein backbone [i](#)

In the following table, the Percentiles column shows the percent Ramachandran outliers of the chain as a percentile score with respect to all X-ray entries followed by that with respect to entries of similar resolution.

The Analysed column shows the number of residues for which the backbone conformation was analysed, and the total number of residues.

Mol	Chain	Analysed	Favoured	Allowed	Outliers	Percentiles
1	A	824/842 (98%)	709 (86%)	89 (11%)	26 (3%)	4 22

All (26) Ramachandran outliers are listed below:

Mol	Chain	Res	Type
1	A	111	PHE
1	A	169	VAL
1	A	264	ALA
1	A	293	LYS
1	A	460	ASP
1	A	120	ARG
1	A	479	LYS
1	A	765	LEU
1	A	113	SER
1	A	137	VAL
1	A	170	SER
1	A	422	LYS

Continued on next page...

Continued from previous page...

Mol	Chain	Res	Type
1	A	624	GLY
1	A	743	ILE
1	A	814	LYS
1	A	232	LYS
1	A	244	LEU
1	A	391	LYS
1	A	336	GLU
1	A	613	LYS
1	A	366	CYS
1	A	703	GLY
1	A	833	PRO
1	A	811	PRO
1	A	189	VAL
1	A	329	PRO

5.3.2 Protein sidechains [i](#)

In the following table, the Percentiles column shows the percent sidechain outliers of the chain as a percentile score with respect to all X-ray entries followed by that with respect to entries of similar resolution.

The Analysed column shows the number of residues for which the sidechain conformation was analysed, and the total number of residues.

Mol	Chain	Analysed	Rotameric	Outliers	Percentiles
1	A	704/715 (98%)	654 (93%)	50 (7%)	14 44

All (50) residues with a non-rotameric sidechain are listed below:

Mol	Chain	Res	Type
1	A	14	ASP
1	A	17	THR
1	A	77	LEU
1	A	79	SER
1	A	96	ASN
1	A	111	PHE
1	A	112	SER
1	A	113	SER
1	A	165	LEU
1	A	184	SER
1	A	240	MET
1	A	249	PHE

Continued on next page...

Continued from previous page...

Mol	Chain	Res	Type
1	A	259	ASN
1	A	262	THR
1	A	306	VAL
1	A	325	ARG
1	A	386	VAL
1	A	388	THR
1	A	404	THR
1	A	425	ASP
1	A	433	ARG
1	A	442	VAL
1	A	460	ASP
1	A	476	HIS
1	A	482	LYS
1	A	501	LEU
1	A	522	MET
1	A	543	GLN
1	A	584	ASN
1	A	587	TYR
1	A	594	ASP
1	A	599	LEU
1	A	631	ARG
1	A	647	ILE
1	A	677	PHE
1	A	690	ASP
1	A	708	THR
1	A	718	LEU
1	A	734	GLN
1	A	735	CYS
1	A	738	GLN
1	A	758	GLU
1	A	765	LEU
1	A	775	ASN
1	A	777	SER
1	A	786	GLN
1	A	793	PHE
1	A	796	MET
1	A	797	VAL
1	A	839	TYR

Sometimes sidechains can be flipped to improve hydrogen bonding and reduce clashes. All (13) such sidechains are listed below:

Mol	Chain	Res	Type
1	A	201	GLN
1	A	349	GLN
1	A	355	GLN
1	A	409	GLN
1	A	452	ASN
1	A	476	HIS
1	A	477	ASN
1	A	543	GLN
1	A	738	GLN
1	A	753	GLN
1	A	775	ASN
1	A	786	GLN
1	A	791	GLN

5.3.3 RNA [i](#)

There are no RNA molecules in this entry.

5.4 Non-standard residues in protein, DNA, RNA chains [i](#)

There are no non-standard protein/DNA/RNA residues in this entry.

5.5 Carbohydrates [i](#)

There are no monosaccharides in this entry.

5.6 Ligand geometry [i](#)

2 ligands are modelled in this entry.

In the following table, the Counts columns list the number of bonds (or angles) for which Mogul statistics could be retrieved, the number of bonds (or angles) that are observed in the model and the number of bonds (or angles) that are defined in the Chemical Component Dictionary. The Link column lists molecule types, if any, to which the group is linked. The Z score for a bond length (or angle) is the number of standard deviations the observed value is removed from the expected value. A bond length (or angle) with $|Z| > 2$ is considered an outlier worth inspection. RMSZ is the root-mean-square of all Z scores of the bond lengths (or angles).

Mol	Type	Chain	Res	Link	Bond lengths			Bond angles		
					Counts	RMSZ	# $ Z > 2$	Counts	RMSZ	# $ Z > 2$
3	GDP	A	902	-	24,30,30	1.10	3 (12%)	30,47,47	0.80	0
2	SOD	A	901	-	37,41,41	1.90	9 (24%)	31,68,68	1.96	9 (29%)

In the following table, the Chirals column lists the number of chiral outliers, the number of chiral centers analysed, the number of these observed in the model and the number defined in the Chemical Component Dictionary. Similar counts are reported in the Torsion and Rings columns. '-' means no outliers of that kind were identified.

Mol	Type	Chain	Res	Link	Chirals	Torsions	Rings
3	GDP	A	902	-	-	3/12/32/32	0/3/3/3
2	SOD	A	901	-	-	7/19/110/110	0/8/6/6

All (12) bond length outliers are listed below:

Mol	Chain	Res	Type	Atoms	Z	Observed(Å)	Ideal(Å)
2	A	901	SOD	C7-C2	5.00	1.62	1.54
2	A	901	SOD	C12-C4	4.88	1.40	1.32
2	A	901	SOD	C24-CL5	-3.55	1.68	1.81
2	A	901	SOD	C1-C5	3.28	1.58	1.51
2	A	901	SOD	C22-C24	3.07	1.59	1.53
2	A	901	SOD	C54-C64	-2.52	1.47	1.52
2	A	901	SOD	C54-C55	-2.52	1.50	1.53
3	A	902	GDP	C6-N1	2.31	1.41	1.37
2	A	901	SOD	C1-C3	2.28	1.64	1.58
2	A	901	SOD	C8-C2	2.18	1.57	1.53
3	A	902	GDP	O4'-C1'	2.13	1.44	1.41
3	A	902	GDP	C5-C6	-2.01	1.43	1.47

All (9) bond angle outliers are listed below:

Mol	Chain	Res	Type	Atoms	Z	Observed(°)	Ideal(°)
2	A	901	SOD	C18-C24-CL5	-6.83	101.98	111.64
2	A	901	SOD	C22-C24-CL5	3.10	117.22	111.33
2	A	901	SOD	C65-O64-C55	-2.90	103.06	107.36
2	A	901	SOD	C8-O17-C52	-2.84	105.99	113.36
2	A	901	SOD	C54-C53-C52	-2.63	105.91	111.02
2	A	901	SOD	O15-C5-C1	-2.53	114.85	122.64
2	A	901	SOD	C10-C6-C2	2.49	108.40	103.54
2	A	901	SOD	C18-C9-C16	-2.42	97.90	102.84
2	A	901	SOD	C2-C1-C4	-2.06	99.96	102.83

There are no chirality outliers.

All (10) torsion outliers are listed below:

Mol	Chain	Res	Type	Atoms
2	A	901	SOD	C2-C1-C5-O14

Continued on next page...

Continued from previous page...

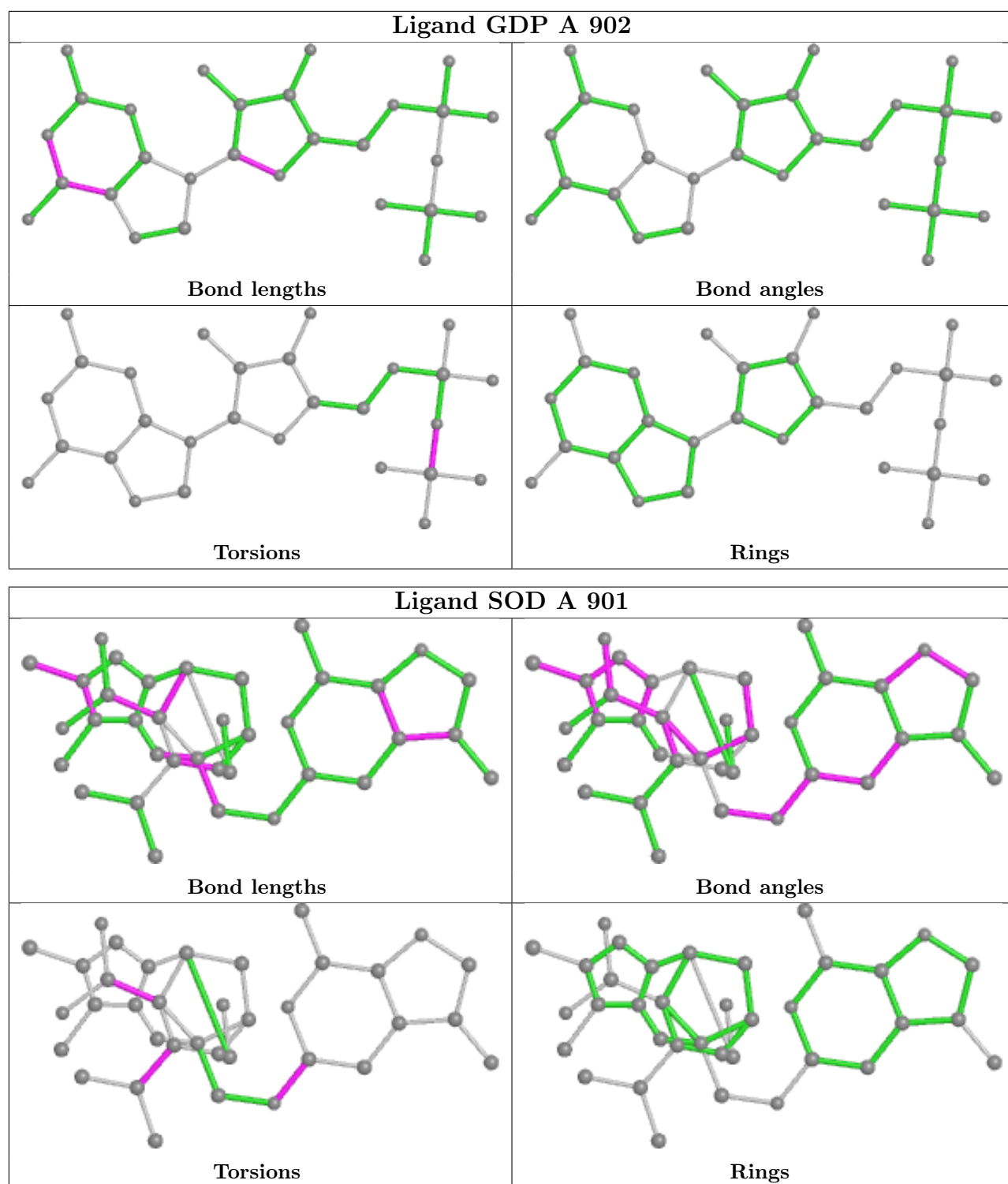
Mol	Chain	Res	Type	Atoms
2	A	901	SOD	C2-C1-C5-O15
2	A	901	SOD	C53-C52-O17-C8
3	A	902	GDP	PA-O3A-PB-O3B
2	A	901	SOD	O56-C52-O17-C8
2	A	901	SOD	C4-C1-C5-O15
2	A	901	SOD	C4-C1-C5-O14
3	A	902	GDP	PA-O3A-PB-O2B
2	A	901	SOD	C20-C13-C4-C1
3	A	902	GDP	PA-O3A-PB-O1B

There are no ring outliers.

1 monomer is involved in 1 short contact:

Mol	Chain	Res	Type	Clashes	Symm-Clashes
3	A	902	GDP	1	0

The following is a two-dimensional graphical depiction of Mogul quality analysis of bond lengths, bond angles, torsion angles, and ring geometry for all instances of the Ligand of Interest. In addition, ligands with molecular weight > 250 and outliers as shown on the validation Tables will also be included. For torsion angles, if less than 5% of the Mogul distribution of torsion angles is within 10 degrees of the torsion angle in question, then that torsion angle is considered an outlier. Any bond that is central to one or more torsion angles identified as an outlier by Mogul will be highlighted in the graph. For rings, the root-mean-square deviation (RMSD) between the ring in question and similar rings identified by Mogul is calculated over all ring torsion angles. If the average RMSD is greater than 60 degrees and the minimal RMSD between the ring in question and any Mogul-identified rings is also greater than 60 degrees, then that ring is considered an outlier. The outliers are highlighted in purple. The color gray indicates Mogul did not find sufficient equivalents in the CSD to analyse the geometry.



5.7 Other polymers [\(i\)](#)

There are no such residues in this entry.

5.8 Polymer linkage issues

There are no chain breaks in this entry.

6 Fit of model and data [i](#)

6.1 Protein, DNA and RNA chains [i](#)

In the following table, the column labelled '#RSRZ > 2' contains the number (and percentage) of RSRZ outliers, followed by percent RSRZ outliers for the chain as percentile scores relative to all X-ray entries and entries of similar resolution. The OWAB column contains the minimum, median, 95th percentile and maximum values of the occupancy-weighted average B-factor per residue. The column labelled 'Q < 0.9' lists the number of (and percentage) of residues with an average occupancy less than 0.9.

Mol	Chain	Analysed	<RSRZ>	#RSRZ>2	OWAB(Å ²)	Q<0.9
1	A	828/842 (98%)	-0.22	15 (1%) 68 55	21, 58, 94, 131	0

All (15) RSRZ outliers are listed below:

Mol	Chain	Res	Type	RSRZ
1	A	108	HIS	5.0
1	A	107	GLY	4.3
1	A	763	THR	3.7
1	A	655	TYR	3.6
1	A	762	GLY	3.4
1	A	110	ASP	3.2
1	A	251	ASN	2.8
1	A	111	PHE	2.7
1	A	761	PRO	2.4
1	A	254	THR	2.3
1	A	253	LYS	2.2
1	A	695	ALA	2.2
1	A	210	ALA	2.1
1	A	112	SER	2.1
1	A	264	ALA	2.1

6.2 Non-standard residues in protein, DNA, RNA chains [i](#)

There are no non-standard protein/DNA/RNA residues in this entry.

6.3 Carbohydrates [i](#)

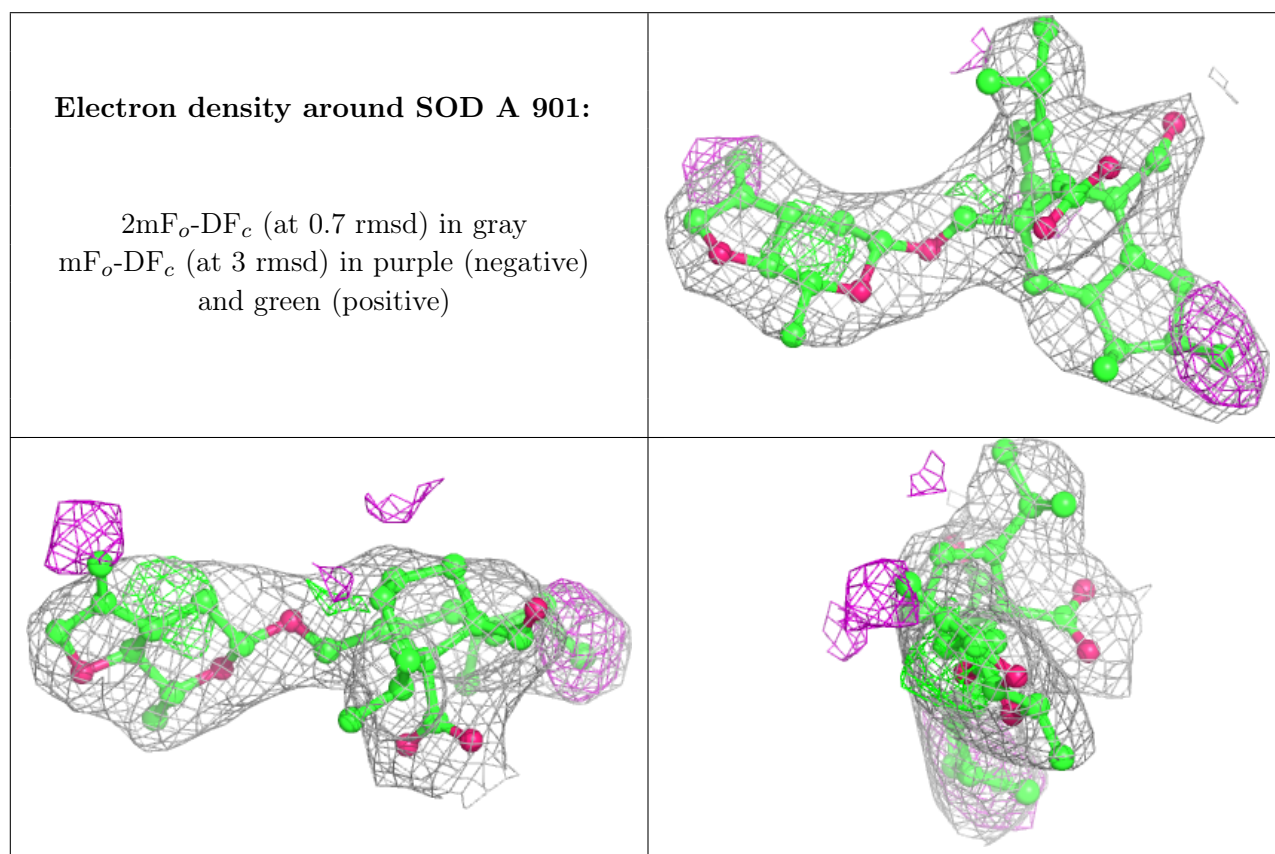
There are no monosaccharides in this entry.

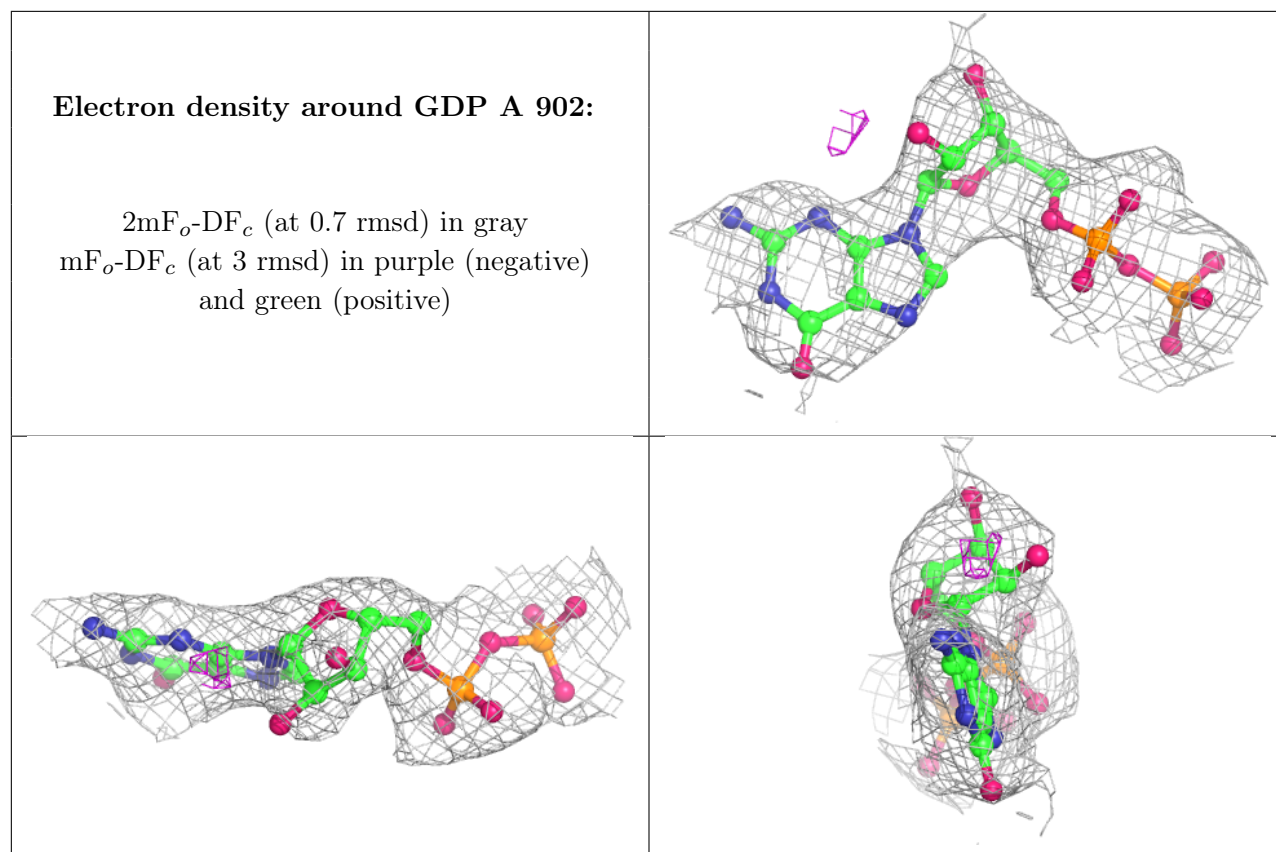
6.4 Ligands [i](#)

In the following table, the Atoms column lists the number of modelled atoms in the group and the number defined in the chemical component dictionary. The B-factors column lists the minimum, median, 95th percentile and maximum values of B factors of atoms in the group. The column labelled 'Q<0.9' lists the number of atoms with occupancy less than 0.9.

Mol	Type	Chain	Res	Atoms	RSCC	RSR	B-factors(Å ²)	Q<0.9
2	SOD	A	901	36/36	0.94	0.20	15,32,45,49	0
3	GDP	A	902	28/28	0.95	0.21	73,78,80,80	0

The following is a graphical depiction of the model fit to experimental electron density of all instances of the Ligand of Interest. In addition, ligands with molecular weight > 250 and outliers as shown on the geometry validation Tables will also be included. Each fit is shown from different orientation to approximate a three-dimensional view.





6.5 Other polymers [i](#)

There are no such residues in this entry.