



# Full wwPDB X-ray Structure Validation Report ⓘ

Oct 7, 2023 – 11:57 PM EDT

PDB ID : 6DZ5  
Title : *Citrobacter freundii* tyrosine phenol-lyase F448A mutant complexed with L-alanine  
Authors : Phillips, R.S.  
Deposited on : 2018-07-03  
Resolution : 2.26 Å (reported)

This is a Full wwPDB X-ray Structure Validation Report for a publicly released PDB entry.

We welcome your comments at [validation@mail.wwpdb.org](mailto:validation@mail.wwpdb.org)

A user guide is available at

<https://www.wwpdb.org/validation/2017/XrayValidationReportHelp>

with specific help available everywhere you see the ⓘ symbol.

The types of validation reports are described at

<http://www.wwpdb.org/validation/2017/FAQs#types>.

---

The following versions of software and data (see [references ⓘ](#)) were used in the production of this report:

MolProbity : 4.02b-467  
Mogul : 1.8.5 (274361), CSD as541be (2020)  
Xtriage (Phenix) : 1.13  
EDS : 2.35.1  
buster-report : 1.1.7 (2018)  
Percentile statistics : 20191225.v01 (using entries in the PDB archive December 25th 2019)  
Refmac : 5.8.0158  
CCP4 : 7.0.044 (Gargrove)  
Ideal geometry (proteins) : Engh & Huber (2001)  
Ideal geometry (DNA, RNA) : Parkinson et al. (1996)  
Validation Pipeline (wwPDB-VP) : 2.35.1

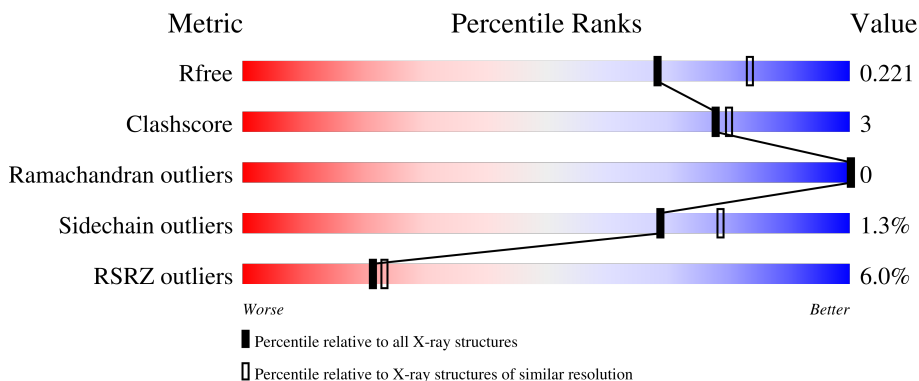
# 1 Overall quality at a glance

The following experimental techniques were used to determine the structure:

*X-RAY DIFFRACTION*

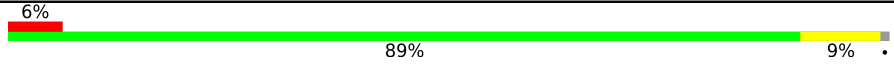
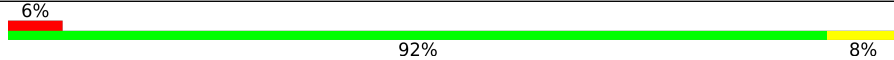
The reported resolution of this entry is 2.26 Å.

Percentile scores (ranging between 0-100) for global validation metrics of the entry are shown in the following graphic. The table shows the number of entries on which the scores are based.



Metric	Whole archive (#Entries)	Similar resolution (#Entries, resolution range(Å))
$R_{free}$	130704	1377 (2.26-2.26)
Clashscore	141614	1487 (2.26-2.26)
Ramachandran outliers	138981	1449 (2.26-2.26)
Sidechain outliers	138945	1450 (2.26-2.26)
RSRZ outliers	127900	1356 (2.26-2.26)

The table below summarises the geometric issues observed across the polymeric chains and their fit to the electron density. The red, orange, yellow and green segments of the lower bar indicate the fraction of residues that contain outliers for  $\geq 3$ , 2, 1 and 0 types of geometric quality criteria respectively. A grey segment represents the fraction of residues that are not modelled. The numeric value for each fraction is indicated below the corresponding segment, with a dot representing fractions  $\leq 5\%$ . The upper red bar (where present) indicates the fraction of residues that have poor fit to the electron density. The numeric value is given above the bar.

Mol	Chain	Length	Quality of chain
1	A	456	
1	B	456	

## 2 Entry composition

There are 5 unique types of molecules in this entry. The entry contains 7886 atoms, of which 0 are hydrogens and 0 are deuteriums.

In the tables below, the ZeroOcc column contains the number of atoms modelled with zero occupancy, the AltConf column contains the number of residues with at least one atom in alternate conformation and the Trace column contains the number of residues modelled with at most 2 atoms.

- Molecule 1 is a protein called Tyrosine phenol-lyase.

Mol	Chain	Residues	Atoms					ZeroOcc	AltConf	Trace
			Total	C	N	O	S			
1	A	452	3608	2283	627	672	26	0	4	0
1	B	455	3634	2298	633	676	27	0	5	0

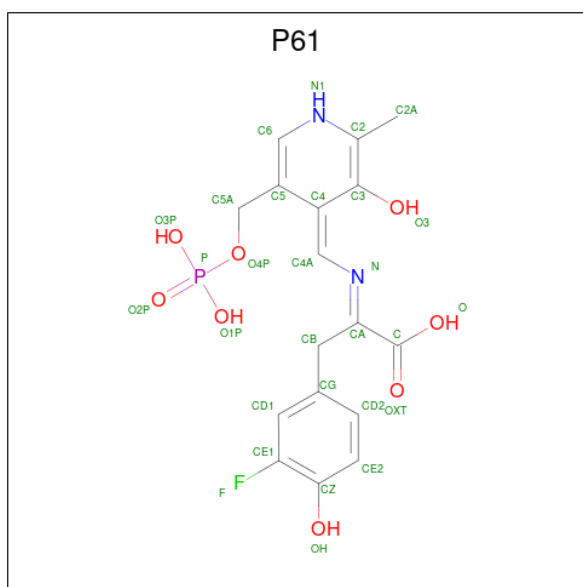
There are 4 discrepancies between the modelled and reference sequences:

Chain	Residue	Modelled	Actual	Comment	Reference
A	205	ALA	GLU	engineered mutation	UNP P31013
A	448	ALA	PHE	engineered mutation	UNP P31013
B	205	ALA	GLU	engineered mutation	UNP P31013
B	448	ALA	PHE	engineered mutation	UNP P31013

- Molecule 2 is POTASSIUM ION (three-letter code: K) (formula: K).

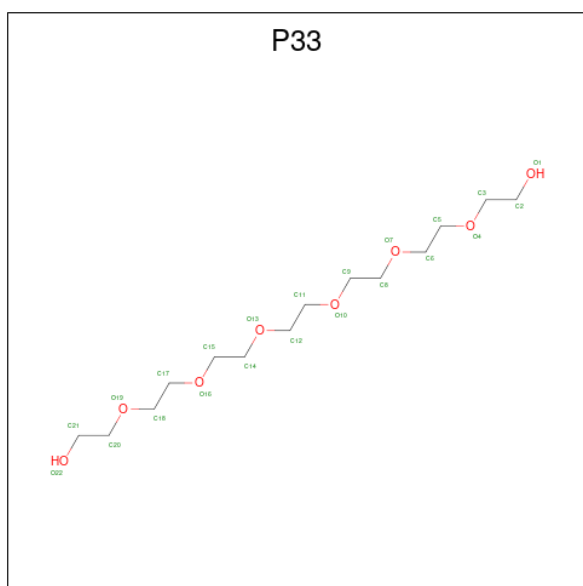
Mol	Chain	Residues	Atoms	ZeroOcc	AltConf
2	A	2	Total K 2 2	0	0

- Molecule 3 is (2E)-3-(3-fluoro-4-hydroxyphenyl)-2-[[[(Z)-{3-hydroxy-2-methyl-5-[(phosphonoxy)methyl]pyridin-4(1H)-ylidene}methyl]imino}propanoic acid (three-letter code: P61) (formula: C<sub>17</sub>H<sub>18</sub>FN<sub>2</sub>O<sub>8</sub>P).



Mol	Chain	Residues	Atoms					ZeroOcc	AltConf	
3	A	1	Total	C	F	N	O	P	0	0
			29	17	1	2	8	1		
3	B	1	Total	C	F	N	O	P	0	0
			29	17	1	2	8	1		

- Molecule 4 is 3,6,9,12,15,18-HEXAOXAIICOSANE-1,20-DIOL (three-letter code: P33) (formula: C<sub>14</sub>H<sub>30</sub>O<sub>8</sub>).



Mol	Chain	Residues	Atoms		ZeroOcc	AltConf	
4	A	1	Total	C	O	0	0
			22	14	8		

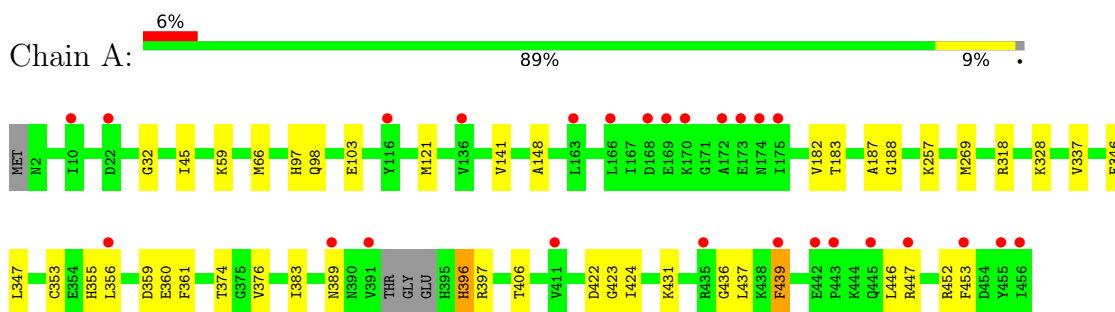
- Molecule 5 is water.

Mol	Chain	Residues	Atoms		ZeroOcc	AltConf
5	A	238	Total 238	O 238	0	0
5	B	324	Total 324	O 324	0	0

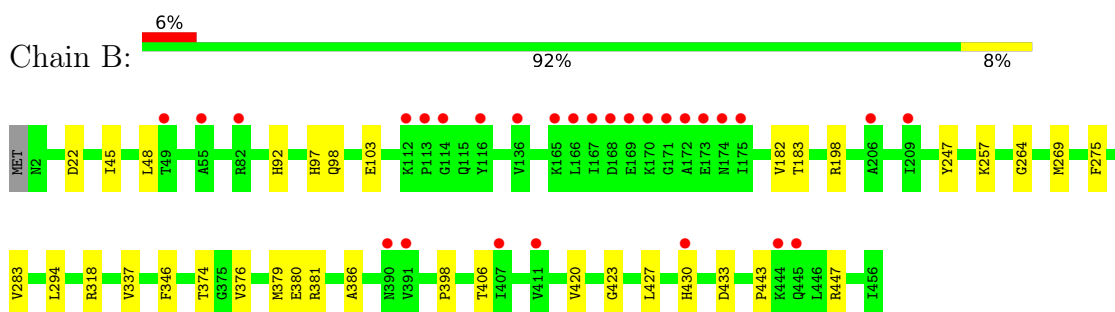
### 3 Residue-property plots [i](#)

These plots are drawn for all protein, RNA, DNA and oligosaccharide chains in the entry. The first graphic for a chain summarises the proportions of the various outlier classes displayed in the second graphic. The second graphic shows the sequence view annotated by issues in geometry and electron density. Residues are color-coded according to the number of geometric quality criteria for which they contain at least one outlier: green = 0, yellow = 1, orange = 2 and red = 3 or more. A red dot above a residue indicates a poor fit to the electron density ( $RSRZ > 2$ ). Stretches of 2 or more consecutive residues without any outlier are shown as a green connector. Residues present in the sample, but not in the model, are shown in grey.

- Molecule 1: Tyrosine phenol-lyase



- Molecule 1: Tyrosine phenol-lyase



## 4 Data and refinement statistics

Property	Value	Source
Space group	P 2 21 21	Depositor
Cell constants a, b, c, $\alpha$ , $\beta$ , $\gamma$	59.88Å 132.81Å 145.37Å 90.00° 90.00° 90.00°	Depositor
Resolution (Å)	44.47 – 2.26 44.47 – 2.26	Depositor EDS
% Data completeness (in resolution range)	98.7 (44.47-2.26) 98.7 (44.47-2.26)	Depositor EDS
$R_{merge}$	0.22	Depositor
$R_{sym}$	(Not available)	Depositor
$\langle I/\sigma(I) \rangle$ <sup>1</sup>	1.30 (at 2.27Å)	Xtrriage
Refinement program	PHENIX 1.13_2998	Depositor
R, $R_{free}$	0.183 , 0.221 0.183 , 0.221	Depositor DCC
$R_{free}$ test set	1998 reflections (3.67%)	wwPDB-VP
Wilson B-factor (Å <sup>2</sup> )	51.3	Xtrriage
Anisotropy	0.197	Xtrriage
Bulk solvent $k_{sol}$ (e/Å <sup>3</sup> ), $B_{sol}$ (Å <sup>2</sup> )	0.34 , 70.2	EDS
L-test for twinning <sup>2</sup>	$\langle  L  \rangle = 0.51$ , $\langle L^2 \rangle = 0.35$	Xtrriage
Estimated twinning fraction	No twinning to report.	Xtrriage
$F_o, F_c$ correlation	0.97	EDS
Total number of atoms	7886	wwPDB-VP
Average B, all atoms (Å <sup>2</sup> )	70.0	wwPDB-VP

Xtrriage's analysis on translational NCS is as follows: *The largest off-origin peak in the Patterson function is 3.81% of the height of the origin peak. No significant pseudotranslation is detected.*

<sup>1</sup>Intensities estimated from amplitudes.

<sup>2</sup>Theoretical values of  $\langle |L| \rangle$ ,  $\langle L^2 \rangle$  for acentric reflections are 0.5, 0.333 respectively for untwinned datasets, and 0.375, 0.2 for perfectly twinned datasets.

## 5 Model quality

### 5.1 Standard geometry

Bond lengths and bond angles in the following residue types are not validated in this section: P33, K, P61

The Z score for a bond length (or angle) is the number of standard deviations the observed value is removed from the expected value. A bond length (or angle) with  $|Z| > 5$  is considered an outlier worth inspection. RMSZ is the root-mean-square of all Z scores of the bond lengths (or angles).

Mol	Chain	Bond lengths		Bond angles	
		RMSZ	# Z  >5	RMSZ	# Z  >5
1	A	0.25	0/3682	0.42	0/4956
1	B	0.24	0/3716	0.42	0/5004
All	All	0.24	0/7398	0.42	0/9960

There are no bond length outliers.

There are no bond angle outliers.

There are no chirality outliers.

There are no planarity outliers.

### 5.2 Too-close contacts

In the following table, the Non-H and H(model) columns list the number of non-hydrogen atoms and hydrogen atoms in the chain respectively. The H(added) column lists the number of hydrogen atoms added and optimized by MolProbity. The Clashes column lists the number of clashes within the asymmetric unit, whereas Symm-Clashes lists symmetry-related clashes.

Mol	Chain	Non-H	H(model)	H(added)	Clashes	Symm-Clashes
1	A	3608	0	3559	24	0
1	B	3634	0	3584	19	0
2	A	2	0	0	0	0
3	A	29	0	13	2	0
3	B	29	0	14	2	0
4	A	22	0	30	0	0
5	A	238	0	0	1	0
5	B	324	0	0	0	0
All	All	7886	0	7200	42	0

The all-atom clashscore is defined as the number of clashes found per 1000 atoms (including hydrogen atoms). The all-atom clashscore for this structure is 3.



All (42) close contacts within the same asymmetric unit are listed below, sorted by their clash magnitude.

Atom-1	Atom-2	Interatomic distance (Å)	Clash overlap (Å)
1:A:360:GLU:HG2	1:A:436:GLY:HA3	1.66	0.78
1:A:121:MET:HE3	1:A:187:ALA:HB2	1.76	0.68
1:A:328:LYS:NZ	1:A:422:ASP:OD1	2.30	0.64
1:A:148:ALA:HB1	1:A:337:VAL:HG22	1.81	0.61
1:A:59:LYS:NZ	5:A:603:HOH:O	2.33	0.61
1:A:439:PHE:HZ	1:A:447:ARG:HD2	1.71	0.55
1:B:45:ILE:HB	1:B:376:VAL:HG22	1.93	0.49
1:A:437:LEU:HB3	1:A:453:PHE:HB3	1.94	0.49
1:A:97:HIS:CD2	1:A:98:GLN:HG2	2.48	0.48
1:A:359:ASP:OD1	1:A:397:ARG:NH1	2.35	0.48
1:B:198:ARG:HG2	1:B:247:TYR:CZ	2.50	0.47
1:B:386:ALA:HB2	1:B:398:PRO:HG3	1.95	0.47
1:A:257:LYS:HZ1	3:A:502:P61:C4A	2.27	0.47
1:B:264:GLY:HA2	1:B:294:LEU:HD21	1.97	0.46
1:A:188:GLY:HA2	1:A:346:PHE:CE1	2.51	0.46
1:B:443:PRO:HG2	1:B:447:ARG:HA	1.96	0.46
1:A:374:THR:HG21	1:A:423:GLY:HA3	1.97	0.46
1:A:361:PHE:HD1	1:A:383:ILE:HD11	1.80	0.45
1:B:337:VAL:HB	1:B:346:PHE:HB2	1.98	0.45
1:A:45:ILE:HB	1:A:376:VAL:HG22	1.99	0.45
1:B:257:LYS:HZ1	3:B:601:P61:C4A	2.29	0.45
1:B:182:VAL:HA	1:B:183:THR:HA	1.77	0.45
1:B:427:LEU:HA	1:B:430[A]:HIS:CE1	2.52	0.45
1:B:22:ASP:OD1	1:B:22:ASP:N	2.50	0.44
1:A:32:GLY:HA3	1:A:452:ARG:CG	2.47	0.44
1:A:446:LEU:HD12	1:B:283:VAL:HG21	1.99	0.44
1:A:374:THR:CG2	1:A:423:GLY:HA3	2.48	0.43
1:A:347:LEU:HD11	1:A:424:ILE:HD13	2.01	0.43
1:B:97:HIS:CD2	1:B:98:GLN:HG2	2.52	0.43
1:A:121:MET:HE2	1:A:141:VAL:HG11	2.01	0.43
1:B:380:GLU:O	1:B:381[B]:ARG:NH1	2.52	0.43
1:B:381[B]:ARG:HA	1:B:381[B]:ARG:HD3	1.80	0.43
1:A:353:CYS:HB3	1:A:356:LEU:HD12	2.01	0.42
1:B:92:HIS:HB3	1:B:275:PHE:CD1	2.55	0.42
1:B:103:GLU:OE1	3:B:601:P61:H6	2.19	0.42
1:B:376:VAL:HG21	1:B:420:VAL:HG22	2.02	0.42
1:A:355:HIS:NE2	1:A:431:LYS:O	2.52	0.42
1:B:374:THR:CG2	1:B:423:GLY:HA3	2.49	0.42
1:A:103:GLU:OE2	3:A:502:P61:H6	2.20	0.42
1:A:389:ASN:HB2	1:A:396:HIS:CE1	2.56	0.41

*Continued on next page...*

Continued from previous page...

Atom-1	Atom-2	Interatomic distance (Å)	Clash overlap (Å)
1:B:48:LEU:HD12	1:B:379:MET:HB2	2.03	0.40
1:A:182:VAL:HA	1:A:183:THR:HA	1.76	0.40

There are no symmetry-related clashes.

## 5.3 Torsion angles [i](#)

### 5.3.1 Protein backbone [i](#)

In the following table, the Percentiles column shows the percent Ramachandran outliers of the chain as a percentile score with respect to all X-ray entries followed by that with respect to entries of similar resolution.

The Analysed column shows the number of residues for which the backbone conformation was analysed, and the total number of residues.

Mol	Chain	Analysed	Favoured	Allowed	Outliers	Percentiles	
1	A	452/456 (99%)	442 (98%)	10 (2%)	0	100	100
1	B	458/456 (100%)	445 (97%)	13 (3%)	0	100	100
All	All	910/912 (100%)	887 (98%)	23 (2%)	0	100	100

There are no Ramachandran outliers to report.

### 5.3.2 Protein sidechains [i](#)

In the following table, the Percentiles column shows the percent sidechain outliers of the chain as a percentile score with respect to all X-ray entries followed by that with respect to entries of similar resolution.

The Analysed column shows the number of residues for which the sidechain conformation was analysed, and the total number of residues.

Mol	Chain	Analysed	Rotameric	Outliers	Percentiles	
1	A	378/377 (100%)	371 (98%)	7 (2%)	57	66
1	B	381/377 (101%)	377 (99%)	4 (1%)	76	84
All	All	759/754 (101%)	748 (99%)	11 (1%)	69	76

All (11) residues with a non-rotameric sidechain are listed below:

Mol	Chain	Res	Type
1	A	66[A]	MET
1	A	66[B]	MET
1	A	269	MET
1	A	318	ARG
1	A	396	HIS
1	A	406	THR
1	A	439	PHE
1	B	269	MET
1	B	318	ARG
1	B	406	THR
1	B	433	ASP

Sometimes sidechains can be flipped to improve hydrogen bonding and reduce clashes. There are no such sidechains identified.

### 5.3.3 RNA [i](#)

There are no RNA molecules in this entry.

## 5.4 Non-standard residues in protein, DNA, RNA chains [i](#)

There are no non-standard protein/DNA/RNA residues in this entry.

## 5.5 Carbohydrates [i](#)

There are no monosaccharides in this entry.

## 5.6 Ligand geometry [i](#)

Of 5 ligands modelled in this entry, 2 are monoatomic - leaving 3 for Mogul analysis.

In the following table, the Counts columns list the number of bonds (or angles) for which Mogul statistics could be retrieved, the number of bonds (or angles) that are observed in the model and the number of bonds (or angles) that are defined in the Chemical Component Dictionary. The Link column lists molecule types, if any, to which the group is linked. The Z score for a bond length (or angle) is the number of standard deviations the observed value is removed from the expected value. A bond length (or angle) with  $|Z| > 2$  is considered an outlier worth inspection. RMSZ is the root-mean-square of all Z scores of the bond lengths (or angles).

Mol	Type	Chain	Res	Link	Bond lengths			Bond angles		
					Counts	RMSZ	$\# Z  > 2$	Counts	RMSZ	$\# Z  > 2$
4	P33	A	504	-	21,21,21	0.54	0	20,20,20	0.20	0

Mol	Type	Chain	Res	Link	Bond lengths			Bond angles		
					Counts	RMSZ	# Z  > 2	Counts	RMSZ	# Z  > 2
3	P61	B	601	-	28,30,30	3.61	11 (39%)	33,43,43	2.20	11 (33%)
3	P61	A	502	-	28,30,30	1.84	3 (10%)	33,43,43	1.69	9 (27%)

In the following table, the Chirals column lists the number of chiral outliers, the number of chiral centers analysed, the number of these observed in the model and the number defined in the Chemical Component Dictionary. Similar counts are reported in the Torsion and Rings columns. '-' means no outliers of that kind were identified.

Mol	Type	Chain	Res	Link	Chirals	Torsions	Rings
4	P33	A	504	-	-	12/19/19/19	-
3	P61	B	601	-	-	3/16/19/19	0/2/2/2
3	P61	A	502	-	-	0/16/19/19	0/2/2/2

All (14) bond length outliers are listed below:

Mol	Chain	Res	Type	Atoms	Z	Observed(Å)	Ideal(Å)
3	B	601	P61	O4P-C5A	-9.79	1.36	1.43
3	B	601	P61	P-O4P	7.92	1.85	1.60
3	A	502	P61	C3-C2	7.81	1.47	1.37
3	B	601	P61	CB-CA	7.14	1.58	1.50
3	B	601	P61	C6-C5	5.94	1.44	1.36
3	B	601	P61	C3-C2	5.81	1.45	1.37
3	B	601	P61	C5A-C5	5.70	1.57	1.50
3	A	502	P61	C6-C5	2.72	1.39	1.36
3	B	601	P61	C2-N1	2.66	1.37	1.34
3	B	601	P61	CB-CG	2.56	1.55	1.51
3	A	502	P61	C4-C3	2.30	1.48	1.43
3	B	601	P61	CZ-CE1	2.23	1.41	1.39
3	B	601	P61	CD1-CE1	2.12	1.41	1.37
3	B	601	P61	CE2-CD2	2.07	1.42	1.38

All (20) bond angle outliers are listed below:

Mol	Chain	Res	Type	Atoms	Z	Observed(°)	Ideal(°)
3	B	601	P61	C2A-C2-N1	5.49	125.36	119.18
3	B	601	P61	CB-CA-N	-4.92	113.59	125.81
3	B	601	P61	C2A-C2-C3	-4.13	117.25	122.34
3	A	502	P61	C2A-C2-C3	-3.77	117.69	122.34
3	B	601	P61	O1P-P-O4P	-3.47	97.49	106.73
3	A	502	P61	C5A-C5-C4	-3.40	120.02	122.20
3	B	601	P61	O4P-P-O2P	-3.32	97.15	106.47

*Continued on next page...*

*Continued from previous page...*

Mol	Chain	Res	Type	Atoms	Z	Observed(°)	Ideal(°)
3	A	502	P61	CG-CB-CA	-3.14	106.09	113.58
3	B	601	P61	C4-C3-C2	3.02	121.08	118.36
3	B	601	P61	CB-CA-C	-3.01	113.12	118.28
3	B	601	P61	O3P-P-O1P	2.94	118.88	107.64
3	B	601	P61	C5A-C5-C4	-2.74	120.44	122.20
3	A	502	P61	CD2-CE2-CZ	-2.73	117.70	120.50
3	A	502	P61	C3-C4-C5	-2.57	117.81	119.26
3	A	502	P61	O3P-P-O4P	-2.50	100.08	106.73
3	A	502	P61	C3-C2-N1	2.44	121.31	118.57
3	B	601	P61	OH-CZ-CE1	2.17	125.44	119.45
3	A	502	P61	C4-C3-C2	-2.12	116.44	118.36
3	B	601	P61	O3P-P-O2P	2.09	118.86	110.68
3	A	502	P61	CG-CD1-CE1	-2.07	118.02	119.37

There are no chirality outliers.

All (15) torsion outliers are listed below:

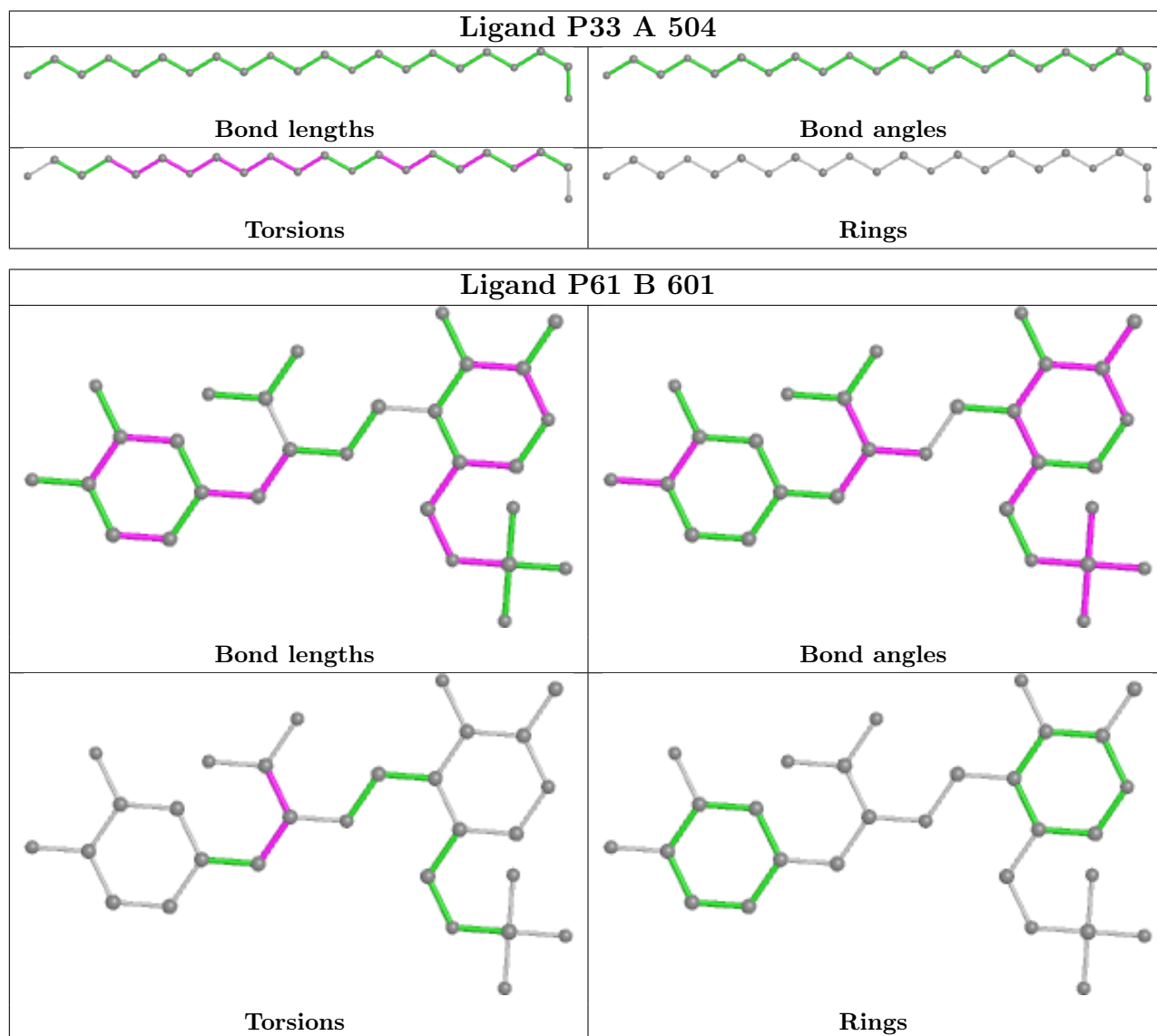
Mol	Chain	Res	Type	Atoms
3	B	601	P61	O-C-CA-CB
3	B	601	P61	OXT-C-CA-CB
3	B	601	P61	C-CA-CB-CG
4	A	504	P33	O7-C8-C9-O10
4	A	504	P33	O13-C14-C15-O16
4	A	504	P33	O10-C11-C12-O13
4	A	504	P33	C5-C6-O7-C8
4	A	504	P33	C21-C20-O19-C18
4	A	504	P33	C12-C11-O10-C9
4	A	504	P33	C6-C5-O4-C3
4	A	504	P33	C9-C8-O7-C6
4	A	504	P33	O4-C5-C6-O7
4	A	504	P33	O16-C17-C18-O19
4	A	504	P33	C14-C15-O16-C17
4	A	504	P33	C8-C9-O10-C11

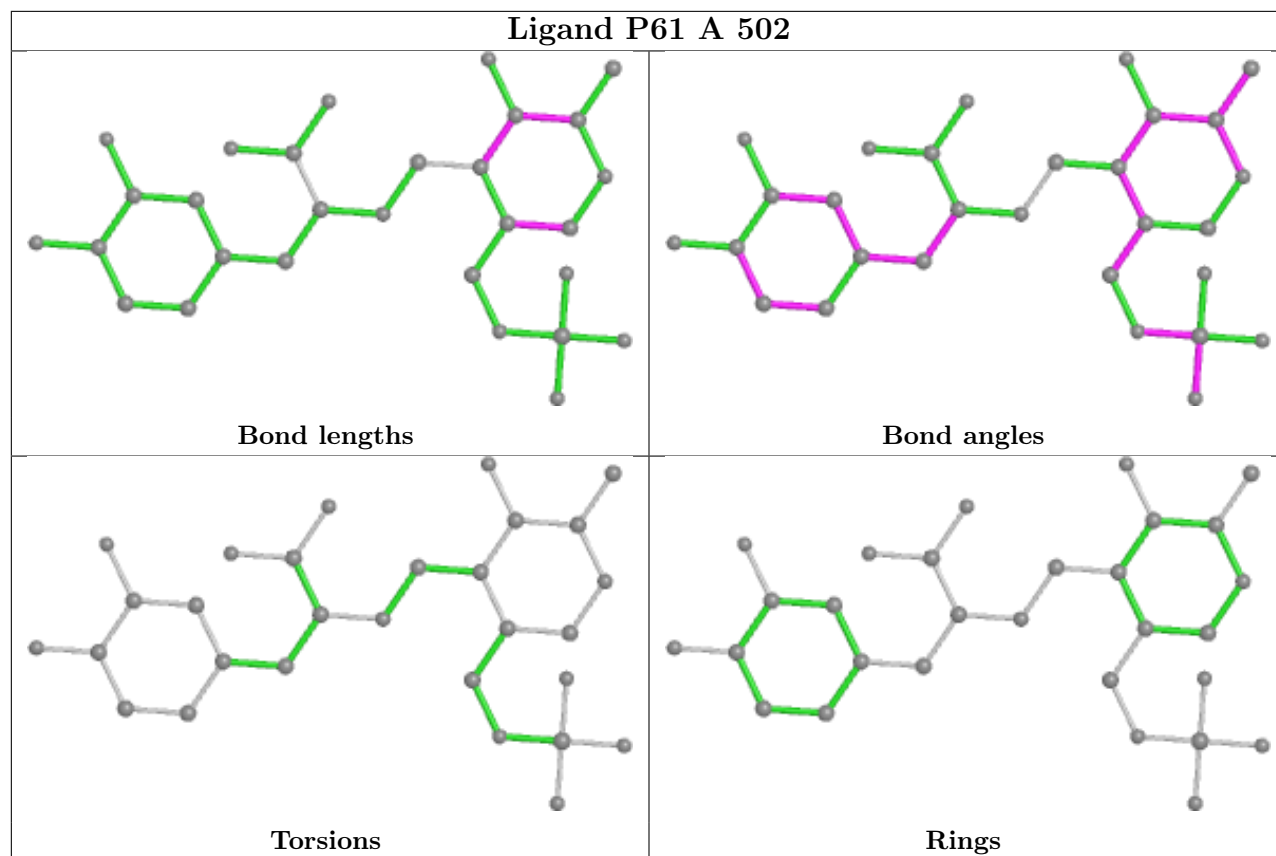
There are no ring outliers.

2 monomers are involved in 4 short contacts:

Mol	Chain	Res	Type	Clashes	Symm-Clashes
3	B	601	P61	2	0
3	A	502	P61	2	0

The following is a two-dimensional graphical depiction of Mogul quality analysis of bond lengths, bond angles, torsion angles, and ring geometry for all instances of the Ligand of Interest. In addition, ligands with molecular weight > 250 and outliers as shown on the validation Tables will also be included. For torsion angles, if less than 5% of the Mogul distribution of torsion angles is within 10 degrees of the torsion angle in question, then that torsion angle is considered an outlier. Any bond that is central to one or more torsion angles identified as an outlier by Mogul will be highlighted in the graph. For rings, the root-mean-square deviation (RMSD) between the ring in question and similar rings identified by Mogul is calculated over all ring torsion angles. If the average RMSD is greater than 60 degrees and the minimal RMSD between the ring in question and any Mogul-identified rings is also greater than 60 degrees, then that ring is considered an outlier. The outliers are highlighted in purple. The color gray indicates Mogul did not find sufficient equivalents in the CSD to analyse the geometry.





## 5.7 Other polymers [\(i\)](#)

There are no such residues in this entry.

## 5.8 Polymer linkage issues [\(i\)](#)

There are no chain breaks in this entry.

## 6 Fit of model and data

### 6.1 Protein, DNA and RNA chains

In the following table, the column labelled ‘#RSRZ > 2’ contains the number (and percentage) of RSRZ outliers, followed by percent RSRZ outliers for the chain as percentile scores relative to all X-ray entries and entries of similar resolution. The OWAB column contains the minimum, median, 95<sup>th</sup> percentile and maximum values of the occupancy-weighted average B-factor per residue. The column labelled ‘Q < 0.9’ lists the number of (and percentage) of residues with an average occupancy less than 0.9.

Mol	Chain	Analysed	<RSRZ>	#RSRZ>2	OWAB(Å <sup>2</sup> )	Q<0.9
1	A	452/456 (99%)	0.17	26 (5%) 23 25	35, 64, 125, 203	0
1	B	455/456 (99%)	0.11	28 (6%) 20 22	36, 62, 104, 161	0
All	All	907/912 (99%)	0.14	54 (5%) 21 23	35, 63, 114, 203	0

All (54) RSRZ outliers are listed below:

Mol	Chain	Res	Type	RSRZ
1	A	456	ILE	8.7
1	B	391	VAL	8.0
1	A	443	PRO	7.5
1	B	166	LEU	4.9
1	B	170	LYS	4.4
1	A	455	TYR	4.2
1	B	445	GLN	4.2
1	B	169	GLU	4.1
1	B	390	ASN	4.0
1	B	175	ILE	4.0
1	A	445	GLN	4.0
1	A	173	GLU	3.8
1	B	171	GLY	3.8
1	A	116	TYR	3.7
1	B	114	GLY	3.6
1	A	389	ASN	3.5
1	B	174	ASN	3.4
1	B	173	GLU	3.4
1	B	167	ILE	3.3
1	B	116	TYR	3.3
1	A	391	VAL	3.2
1	B	168	ASP	3.1
1	B	165	LYS	3.0
1	B	172	ALA	3.0

*Continued on next page...*



*Continued from previous page...*

Mol	Chain	Res	Type	RSRZ
1	A	136	VAL	2.9
1	A	442	GLU	2.8
1	B	206	ALA	2.8
1	B	112	LYS	2.7
1	B	430[A]	HIS	2.7
1	B	113	PRO	2.7
1	A	170	LYS	2.6
1	B	407	ILE	2.6
1	A	174	ASN	2.6
1	A	447	ARG	2.5
1	A	356	LEU	2.5
1	A	163	LEU	2.5
1	A	166	LEU	2.4
1	B	411	VAL	2.4
1	A	175	ILE	2.4
1	B	55	ALA	2.4
1	A	168	ASP	2.3
1	A	453	PHE	2.3
1	A	10	ILE	2.3
1	A	439	PHE	2.2
1	B	209	ILE	2.2
1	A	435	ARG	2.1
1	B	444	LYS	2.1
1	A	411	VAL	2.1
1	B	82	ARG	2.1
1	A	22	ASP	2.1
1	A	172	ALA	2.1
1	A	169	GLU	2.0
1	B	136	VAL	2.0
1	B	49	THR	2.0

## 6.2 Non-standard residues in protein, DNA, RNA chains [i](#)

There are no non-standard protein/DNA/RNA residues in this entry.

## 6.3 Carbohydrates [i](#)

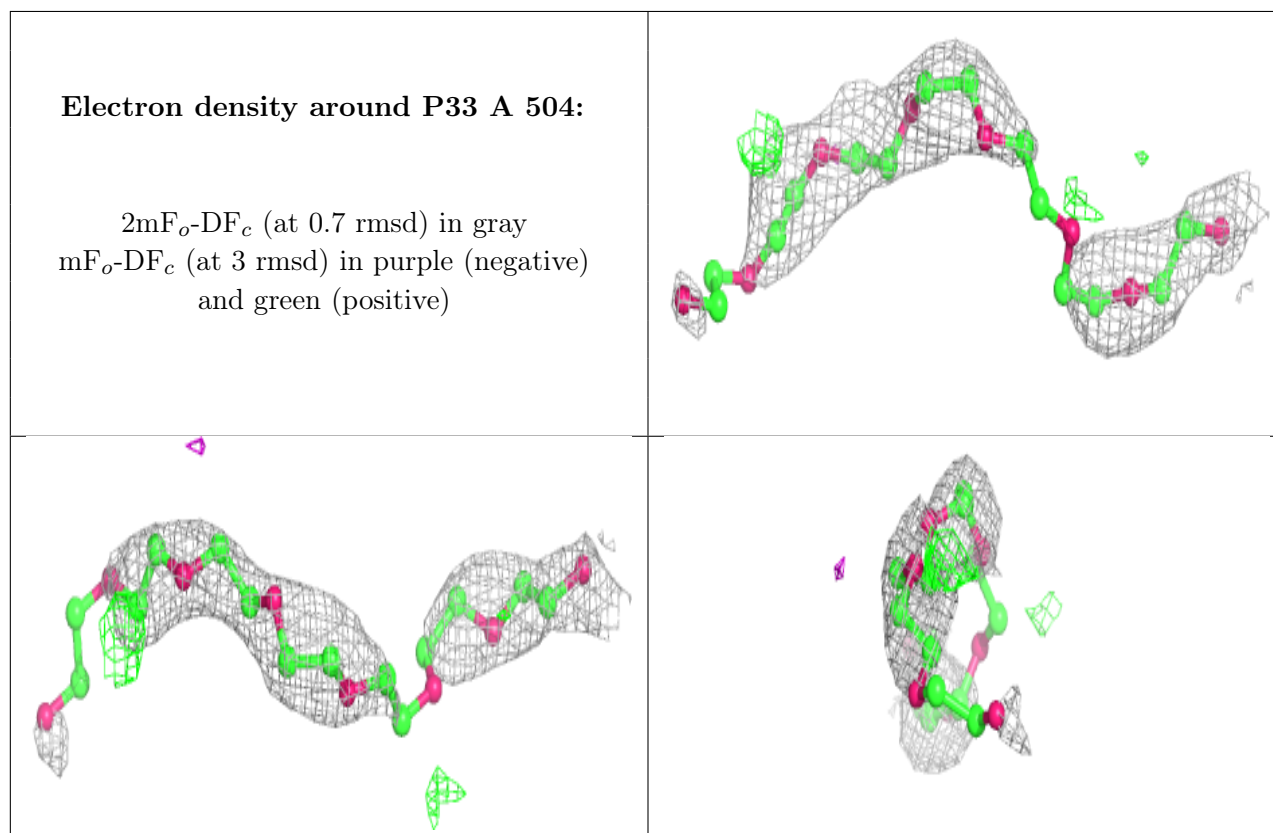
There are no monosaccharides in this entry.

## 6.4 Ligands [i](#)

In the following table, the Atoms column lists the number of modelled atoms in the group and the number defined in the chemical component dictionary. The B-factors column lists the minimum, median, 95<sup>th</sup> percentile and maximum values of B factors of atoms in the group. The column labelled 'Q < 0.9' lists the number of atoms with occupancy less than 0.9.

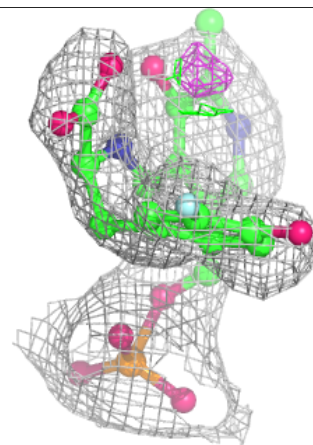
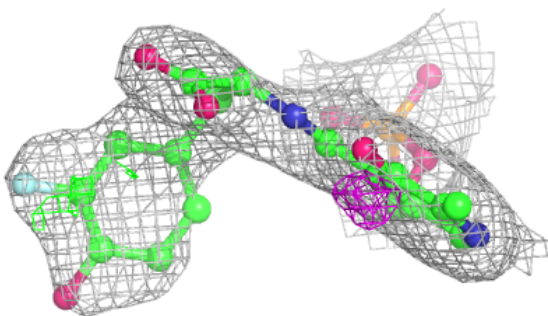
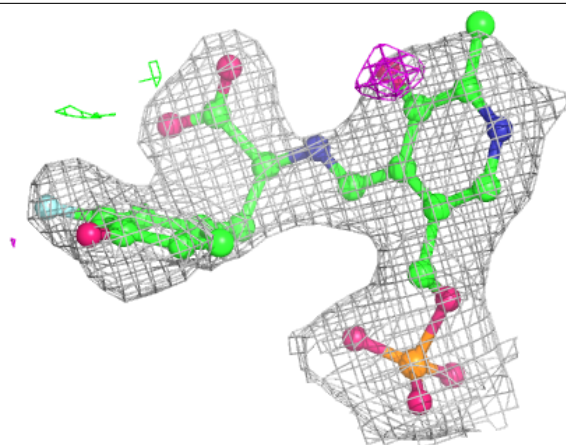
Mol	Type	Chain	Res	Atoms	RSCC	RSR	B-factors(Å <sup>2</sup> )	Q<0.9
4	P33	A	504	22/22	0.67	0.24	92,106,121,124	0
2	K	A	503	1/1	0.93	0.07	50,50,50,50	0
3	P61	B	601	29/29	0.95	0.19	48,70,98,103	0
2	K	A	501	1/1	0.98	0.08	54,54,54,54	0
3	P61	A	502	29/29	0.98	0.14	41,58,96,101	0

The following is a graphical depiction of the model fit to experimental electron density of all instances of the Ligand of Interest. In addition, ligands with molecular weight > 250 and outliers as shown on the geometry validation Tables will also be included. Each fit is shown from different orientation to approximate a three-dimensional view.



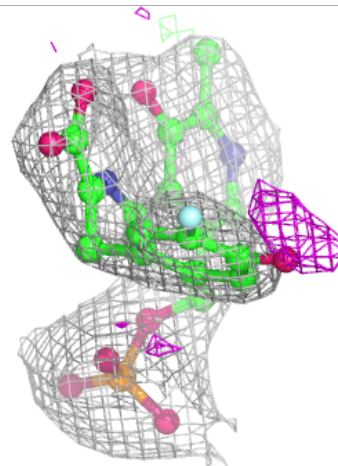
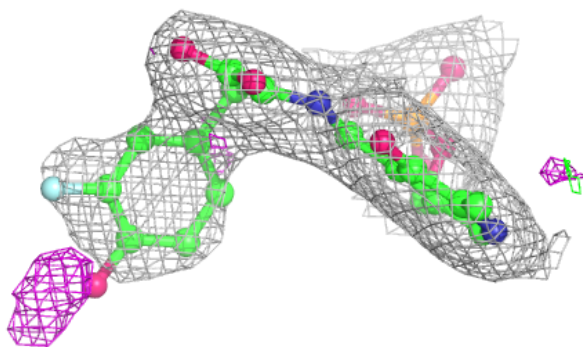
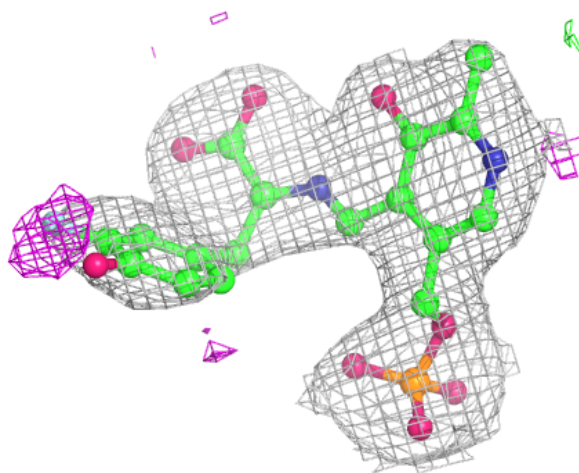
**Electron density around P61 B 601:**

$2mF_o-DF_c$  (at 0.7 rmsd) in gray  
 $mF_o-DF_c$  (at 3 rmsd) in purple (negative)  
and green (positive)



**Electron density around P61 A 502:**

$2mF_o-DF_c$  (at 0.7 rmsd) in gray  
 $mF_o-DF_c$  (at 3 rmsd) in purple (negative)  
and green (positive)



## 6.5 Other polymers [i](#)

There are no such residues in this entry.