



# Full wwPDB X-ray Structure Validation Report ⓘ

May 17, 2020 – 05:34 am BST

PDB ID : 3DYA  
Title : HIV-1 RT with non-nucleoside inhibitor annulated Pyrazole 1  
Authors : Harris, S.F.; Villasenor, A.  
Deposited on : 2008-07-25  
Resolution : 2.30 Å(reported)

This is a Full wwPDB X-ray Structure Validation Report for a publicly released PDB entry.

We welcome your comments at [validation@mail.wwpdb.org](mailto:validation@mail.wwpdb.org)

A user guide is available at

<https://www.wwpdb.org/validation/2017/XrayValidationReportHelp>

with specific help available everywhere you see the ⓘ symbol.

---

The following versions of software and data (see [references ⓘ](#)) were used in the production of this report:

MolProbity : 4.02b-467  
Mogul : 1.8.5 (274361), CSD as541be (2020)  
Xtriage (Phenix) : 1.13  
EDS : 2.11  
buster-report : 1.1.7 (2018)  
Percentile statistics : 20191225.v01 (using entries in the PDB archive December 25th 2019)  
Refmac : 5.8.0158  
CCP4 : 7.0.044 (Gargrove)  
Ideal geometry (proteins) : Engh & Huber (2001)  
Ideal geometry (DNA, RNA) : Parkinson et al. (1996)  
Validation Pipeline (wwPDB-VP) : 2.11

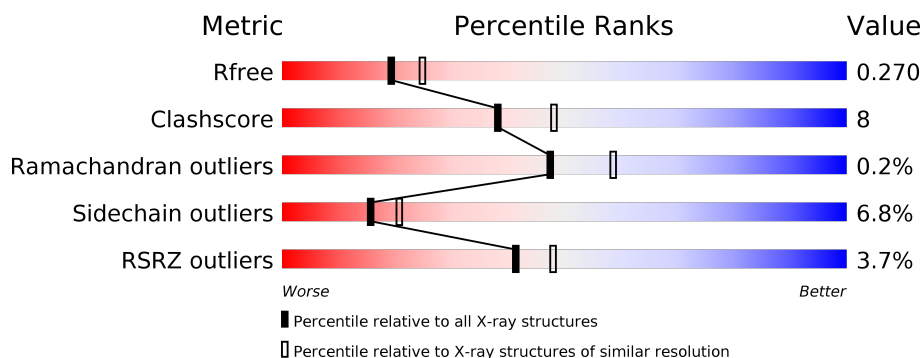
# 1 Overall quality at a glance

The following experimental techniques were used to determine the structure:

*X-RAY DIFFRACTION*

The reported resolution of this entry is 2.30 Å.

Percentile scores (ranging between 0-100) for global validation metrics of the entry are shown in the following graphic. The table shows the number of entries on which the scores are based.



Metric	Whole archive (#Entries)	Similar resolution (#Entries, resolution range(Å))
$R_{free}$	130704	5042 (2.30-2.30)
Clashscore	141614	5643 (2.30-2.30)
Ramachandran outliers	138981	5575 (2.30-2.30)
Sidechain outliers	138945	5575 (2.30-2.30)
RSRZ outliers	127900	4938 (2.30-2.30)

The table below summarises the geometric issues observed across the polymeric chains and their fit to the electron density. The red, orange, yellow and green segments on the lower bar indicate the fraction of residues that contain outliers for  $\geq 3$ , 2, 1 and 0 types of geometric quality criteria respectively. A grey segment represents the fraction of residues that are not modelled. The numeric value for each fraction is indicated below the corresponding segment, with a dot representing fractions  $\leq 5\%$ . The upper red bar (where present) indicates the fraction of residues that have poor fit to the electron density. The numeric value is given above the bar.

Mol	Chain	Length	Quality of chain
1	A	561	
2	B	440	

## 2 Entry composition [i](#)

There are 4 unique types of molecules in this entry. The entry contains 8161 atoms, of which 0 are hydrogens and 0 are deuteriums.

In the tables below, the ZeroOcc column contains the number of atoms modelled with zero occupancy, the AltConf column contains the number of residues with at least one atom in alternate conformation and the Trace column contains the number of residues modelled with at most 2 atoms.

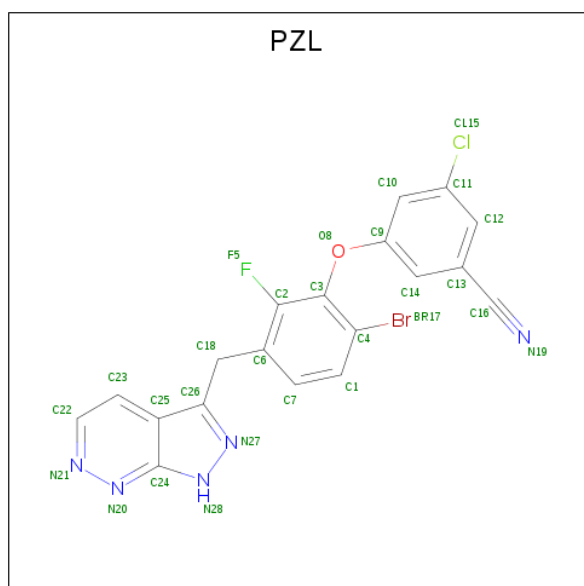
- Molecule 1 is a protein called REVERSE TRANSCRIPTASE/RIBONUCLEASE H.

Mol	Chain	Residues	Atoms					ZeroOcc	AltConf	Trace
			Total	C	N	O	S			
1	A	551	4495	2906	751	830	8	0	1	0

- Molecule 2 is a protein called p51 RT.

Mol	Chain	Residues	Atoms					ZeroOcc	AltConf	Trace
			Total	C	N	O	S			
2	B	402	3327	2170	546	604	7	0	0	0

- Molecule 3 is 3-[6-bromo-2-fluoro-3-(1H-pyrazolo[3,4-c]pyridazin-3-ylmethyl)phenoxy]-5-chlorobenzonitrile (three-letter code: PZL) (formula: C<sub>19</sub>H<sub>10</sub>BrClFN<sub>5</sub>O).



Mol	Chain	Residues	Atoms						ZeroOcc	AltConf	
			Total	Br	C	Cl	F	N			O
3	A	1	28	1	19	1	1	5	1	0	0

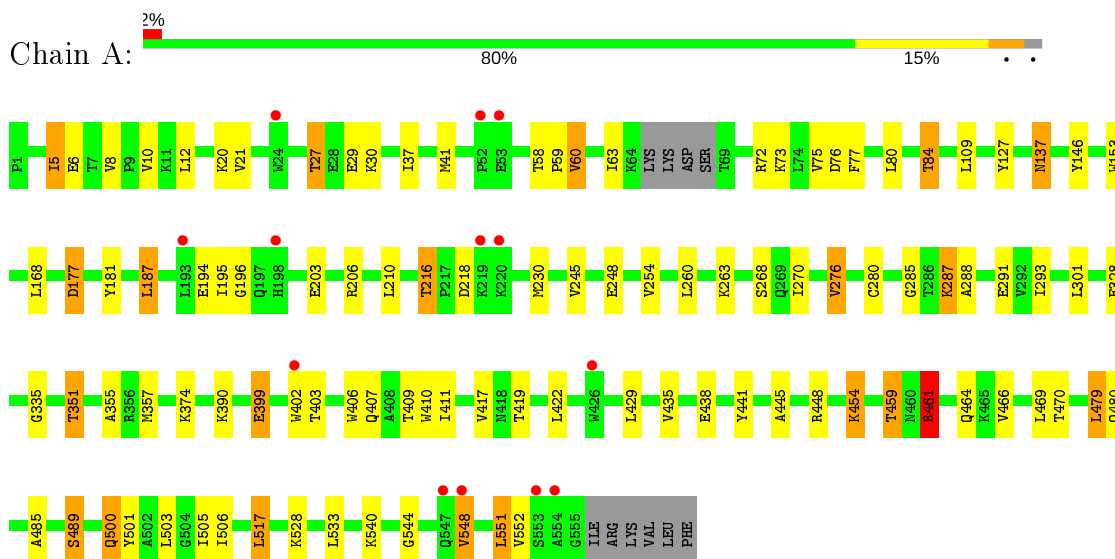
- Molecule 4 is water.

<b>Mol</b>	<b>Chain</b>	<b>Residues</b>	<b>Atoms</b>		<b>ZeroOcc</b>	<b>AltConf</b>
4	A	183	Total 183	O 183	0	0
4	B	128	Total 128	O 128	0	0

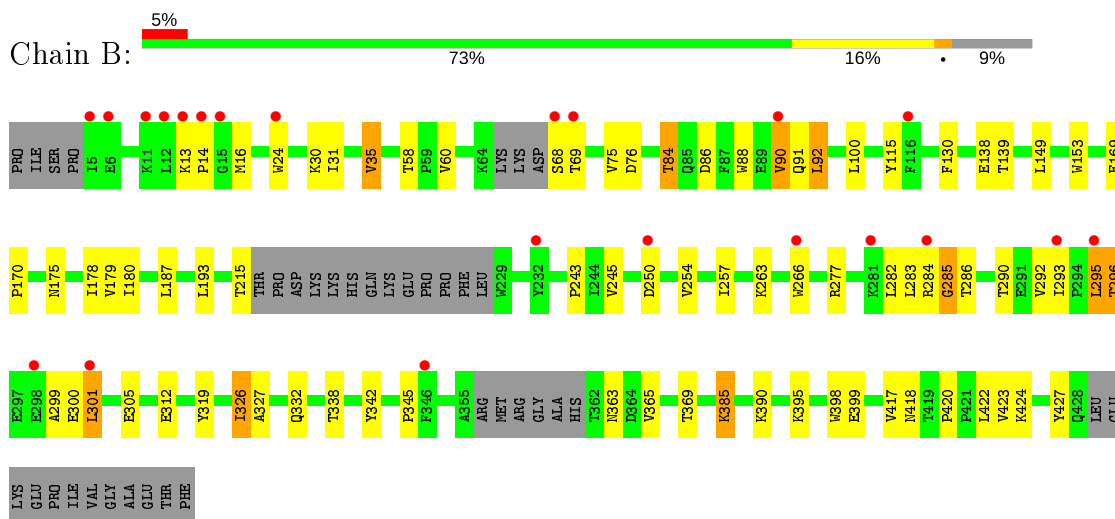
### 3 Residue-property plots [i](#)

These plots are drawn for all protein, RNA and DNA chains in the entry. The first graphic for a chain summarises the proportions of the various outlier classes displayed in the second graphic. The second graphic shows the sequence view annotated by issues in geometry and electron density. Residues are color-coded according to the number of geometric quality criteria for which they contain at least one outlier: green = 0, yellow = 1, orange = 2 and red = 3 or more. A red dot above a residue indicates a poor fit to the electron density ( $RSRZ > 2$ ). Stretches of 2 or more consecutive residues without any outlier are shown as a green connector. Residues present in the sample, but not in the model, are shown in grey.

- Molecule 1: REVERSE TRANSCRIPTASE/RIBONUCLEASE H



- Molecule 2: p51 RT



## 4 Data and refinement statistics

Property	Value	Source
Space group	C 2 2 21	Depositor
Cell constants a, b, c, $\alpha$ , $\beta$ , $\gamma$	117.66Å 153.67Å 155.79Å 90.00° 90.00° 90.00°	Depositor
Resolution (Å)	46.98 – 2.30 46.97 – 2.30	Depositor EDS
% Data completeness (in resolution range)	96.6 (46.98-2.30) 96.6 (46.97-2.30)	Depositor EDS
$R_{merge}$	(Not available)	Depositor
$R_{sym}$	0.07	Depositor
$\langle I/\sigma(I) \rangle$ <sup>1</sup>	1.39 (at 2.29Å)	Xtrriage
Refinement program	REFMAC 5.2.0019	Depositor
R, $R_{free}$	0.218 , 0.266 0.222 , 0.270	Depositor DCC
$R_{free}$ test set	3093 reflections (5.10%)	wwPDB-VP
Wilson B-factor (Å <sup>2</sup> )	52.5	Xtrriage
Anisotropy	0.173	Xtrriage
Bulk solvent $k_{sol}$ (e/Å <sup>3</sup> ), $B_{sol}$ (Å <sup>2</sup> )	0.35 , 46.4	EDS
L-test for twinning <sup>2</sup>	$\langle  L  \rangle = 0.51$ , $\langle L^2 \rangle = 0.34$	Xtrriage
Estimated twinning fraction	No twinning to report.	Xtrriage
$F_o, F_c$ correlation	0.95	EDS
Total number of atoms	8161	wwPDB-VP
Average B, all atoms (Å <sup>2</sup> )	57.0	wwPDB-VP

Xtrriage's analysis on translational NCS is as follows: *The largest off-origin peak in the Patterson function is 4.03% of the height of the origin peak. No significant pseudotranslation is detected.*

<sup>1</sup>Intensities estimated from amplitudes.

<sup>2</sup>Theoretical values of  $\langle |L| \rangle$ ,  $\langle L^2 \rangle$  for acentric reflections are 0.5, 0.333 respectively for untwinned datasets, and 0.375, 0.2 for perfectly twinned datasets.

## 5 Model quality [i](#)

### 5.1 Standard geometry [i](#)

Bond lengths and bond angles in the following residue types are not validated in this section: PZL

The Z score for a bond length (or angle) is the number of standard deviations the observed value is removed from the expected value. A bond length (or angle) with  $|Z| > 5$  is considered an outlier worth inspection. RMSZ is the root-mean-square of all Z scores of the bond lengths (or angles).

Mol	Chain	Bond lengths		Bond angles	
		RMSZ	# Z  >5	RMSZ	# Z  >5
1	A	0.59	0/4612	0.65	1/6267 (0.0%)
2	B	0.60	0/3421	0.63	0/4650
All	All	0.59	0/8033	0.64	1/10917 (0.0%)

There are no bond length outliers.

All (1) bond angle outliers are listed below:

Mol	Chain	Res	Type	Atoms	Z	Observed(°)	Ideal(°)
1	A	461	ARG	NE-CZ-NH1	7.66	124.13	120.30

There are no chirality outliers.

There are no planarity outliers.

### 5.2 Too-close contacts [i](#)

In the following table, the Non-H and H(model) columns list the number of non-hydrogen atoms and hydrogen atoms in the chain respectively. The H(added) column lists the number of hydrogen atoms added and optimized by MolProbity. The Clashes column lists the number of clashes within the asymmetric unit, whereas Symm-Clashes lists symmetry related clashes.

Mol	Chain	Non-H	H(model)	H(added)	Clashes	Symm-Clashes
1	A	4495	0	4536	69	0
2	B	3327	0	3348	61	0
3	A	28	0	10	0	0
4	A	183	0	0	5	0
4	B	128	0	0	4	0
All	All	8161	0	7894	120	0

The all-atom clashscore is defined as the number of clashes found per 1000 atoms (including

hydrogen atoms). The all-atom clashscore for this structure is 8.

All (120) close contacts within the same asymmetric unit are listed below, sorted by their clash magnitude.

Atom-1	Atom-2	Interatomic distance (Å)	Clash overlap (Å)
1:A:500:GLN:NE2	2:B:422:LEU:HD12	1.66	1.08
1:A:268:SER:O	1:A:351:THR:HG22	1.71	0.89
2:B:84:THR:HG21	2:B:153:TRP:HE1	1.38	0.88
1:A:27:THR:HG21	4:A:660:HOH:O	1.75	0.85
1:A:80:LEU:O	1:A:84:THR:HG22	1.76	0.85
2:B:326:ILE:HD13	2:B:390:LYS:HD2	1.58	0.85
1:A:37:ILE:HG22	1:A:41:MET:CE	2.11	0.80
1:A:84:THR:HG21	1:A:153:TRP:HE1	1.49	0.77
1:A:37:ILE:HG22	1:A:41:MET:HE1	1.66	0.76
1:A:461:ARG:HH11	1:A:461:ARG:HG2	1.50	0.76
2:B:254:VAL:HG13	2:B:283:LEU:HD22	1.68	0.75
2:B:138:GLU:HG2	2:B:139:THR:HG23	1.71	0.73
1:A:406:TRP:CH2	2:B:418:ASN:HA	2.24	0.72
1:A:406:TRP:CZ3	1:A:407:GLN:HG2	2.25	0.71
2:B:365:VAL:O	2:B:369:THR:HG23	1.92	0.69
1:A:216:THR:HG22	4:A:563:HOH:O	1.92	0.68
1:A:466:VAL:CG2	1:A:551:LEU:HD12	2.24	0.68
2:B:24:TRP:HB2	4:B:443:HOH:O	1.94	0.67
1:A:485:ALA:O	1:A:489:SER:HB2	1.96	0.66
1:A:417:VAL:HG22	1:A:419:THR:HG23	1.77	0.66
1:A:435:VAL:HG23	2:B:290:THR:HG21	1.78	0.65
1:A:73:LYS:NZ	1:A:146:TYR:OH	2.30	0.65
2:B:296:THR:HG23	2:B:299:ALA:CB	2.27	0.64
1:A:27:THR:HG22	1:A:30:LYS:H	1.62	0.63
2:B:369:THR:HG22	2:B:398:TRP:CH2	2.35	0.61
2:B:91:GLN:HG2	2:B:92:LEU:HD13	1.82	0.61
2:B:295:LEU:HD12	2:B:300:GLU:OE1	1.99	0.61
2:B:326:ILE:HD12	2:B:327:ALA:N	2.15	0.60
1:A:409:THR:HG21	4:A:567:HOH:O	2.01	0.60
1:A:254:VAL:HG22	1:A:293:ILE:HD11	1.82	0.60
2:B:424:LYS:NZ	4:B:485:HOH:O	2.34	0.60
1:A:454:LYS:HE3	1:A:466:VAL:HG11	1.82	0.59
1:A:37:ILE:HG22	1:A:41:MET:HE2	1.83	0.59
1:A:466:VAL:HG23	1:A:551:LEU:HD12	1.85	0.58
2:B:254:VAL:HG13	2:B:283:LEU:CD2	2.33	0.58
2:B:86:ASP:HA	2:B:90:VAL:HG13	1.85	0.58
2:B:301:LEU:HD22	4:B:482:HOH:O	2.02	0.58
2:B:266:TRP:HZ2	2:B:427:TYR:HH	1.53	0.56

*Continued on next page...*



*Continued from previous page...*

Atom-1	Atom-2	Interatomic distance (Å)	Clash overlap (Å)
2:B:58:THR:HG23	2:B:76:ASP:O	2.05	0.56
2:B:332:GLN:HG3	2:B:338:THR:HG23	1.88	0.56
1:A:12:LEU:HD11	1:A:127:TYR:CE1	2.41	0.56
1:A:503:LEU:HD12	1:A:533:LEU:CD2	2.36	0.55
1:A:406:TRP:CZ3	1:A:407:GLN:CG	2.90	0.54
2:B:84:THR:HG23	2:B:88:TRP:HD1	1.73	0.54
2:B:243:PRO:O	2:B:245:VAL:HG13	2.07	0.54
2:B:296:THR:HG23	2:B:299:ALA:HB2	1.89	0.53
2:B:266:TRP:HZ2	2:B:427:TYR:OH	1.92	0.53
2:B:420:PRO:HB2	2:B:423:VAL:HG13	1.90	0.53
1:A:60:VAL:HG12	1:A:75:VAL:HG22	1.90	0.52
1:A:276:VAL:HG13	1:A:280:CYS:SG	2.50	0.52
1:A:8:VAL:O	1:A:10:VAL:HG23	2.10	0.52
1:A:459:THR:O	2:B:286:THR:HG21	2.09	0.52
1:A:37:ILE:CG2	1:A:41:MET:HE1	2.39	0.52
2:B:266:TRP:CZ2	2:B:427:TYR:CZ	2.97	0.52
1:A:429:LEU:HD11	1:A:506:ILE:HG22	1.91	0.51
2:B:84:THR:HG23	2:B:88:TRP:CD1	2.46	0.51
2:B:301:LEU:HD12	2:B:305:GLU:OE2	2.11	0.51
2:B:296:THR:HG23	2:B:299:ALA:HB3	1.93	0.50
1:A:84:THR:HG21	1:A:153:TRP:NE1	2.24	0.50
1:A:245:VAL:O	1:A:263:LYS:NZ	2.44	0.50
2:B:68:SER:OG	2:B:69:THR:N	2.44	0.50
1:A:438:GLU:HG3	1:A:461:ARG:HD3	1.94	0.48
2:B:395:LYS:NZ	2:B:399:GLU:OE1	2.46	0.48
1:A:435:VAL:CG2	2:B:290:THR:HG21	2.43	0.48
1:A:469:LEU:HD21	1:A:480:GLN:HG2	1.95	0.48
1:A:75:VAL:HG11	1:A:77:PHE:CZ	2.49	0.48
1:A:27:THR:CG2	1:A:30:LYS:H	2.25	0.47
1:A:137:ASN:ND2	4:A:585:HOH:O	2.46	0.47
2:B:326:ILE:CD1	2:B:390:LYS:HD2	2.38	0.47
1:A:445:ALA:HB3	1:A:552:VAL:HG12	1.96	0.47
2:B:60:VAL:HG12	2:B:75:VAL:HG22	1.97	0.46
1:A:177:ASP:OD1	1:A:177:ASP:C	2.55	0.45
1:A:287:LYS:HB3	1:A:291:GLU:OE1	2.17	0.45
1:A:503:LEU:HD12	1:A:533:LEU:HD23	1.98	0.45
1:A:410:TRP:CE3	2:B:363:ASN:HB2	2.51	0.45
1:A:181:TYR:CD1	2:B:138:GLU:HA	2.52	0.45
1:A:168:LEU:HD11	1:A:187:LEU:HD11	1.99	0.45
1:A:441:TYR:O	1:A:548:VAL:HG21	2.17	0.44
1:A:335:GLY:O	1:A:355:ALA:HA	2.17	0.44

*Continued on next page...*

*Continued from previous page...*

Atom-1	Atom-2	Interatomic distance (Å)	Clash overlap (Å)
2:B:282:LEU:HD11	2:B:296:THR:CG2	2.48	0.44
1:A:21:VAL:HB	1:A:59:PRO:HD3	1.99	0.44
1:A:328:GLU:HG2	1:A:390:LYS:HB2	2.00	0.44
2:B:115:TYR:HB3	2:B:149:LEU:HB2	1.99	0.44
1:A:195:ILE:CG2	1:A:196:GLY:N	2.80	0.44
1:A:406:TRP:HH2	2:B:418:ASN:HA	1.80	0.43
1:A:270:ILE:HA	1:A:351:THR:HB	2.00	0.43
1:A:399:GLU:O	1:A:403:THR:HG23	2.18	0.43
1:A:500:GLN:HE21	2:B:422:LEU:HD12	1.71	0.43
1:A:58:THR:HG23	1:A:76:ASP:O	2.19	0.43
1:A:5:ILE:HD13	1:A:6:GLU:O	2.18	0.43
1:A:206:ARG:HG2	1:A:216:THR:HG21	2.01	0.43
1:A:459:THR:O	2:B:286:THR:CG2	2.67	0.43
2:B:257:ILE:HD12	2:B:293:ILE:HG21	2.01	0.42
2:B:31:ILE:O	2:B:35:VAL:HG13	2.18	0.42
1:A:109:LEU:HD22	1:A:216:THR:OG1	2.19	0.42
2:B:284:ARG:CG	2:B:285:GLY:N	2.83	0.42
2:B:169:GLU:HB3	2:B:170:PRO:HD3	2.01	0.42
2:B:342:TYR:CE1	2:B:345:PRO:HA	2.55	0.42
2:B:180:ILE:CG2	2:B:187:LEU:HD22	2.49	0.42
2:B:60:VAL:HG11	2:B:130:PHE:CD2	2.55	0.42
1:A:288:ALA:HB3	1:A:291:GLU:HB2	2.01	0.42
1:A:501:TYR:CZ	1:A:505:ILE:HD11	2.54	0.42
2:B:13:LYS:HG2	2:B:14:PRO:CD	2.48	0.42
1:A:27:THR:HG23	1:A:29:GLU:H	1.85	0.42
1:A:399:GLU:HA	1:A:402:TRP:CD1	2.55	0.41
2:B:100:LEU:CD1	2:B:179:VAL:HG23	2.50	0.41
2:B:30:LYS:NZ	4:B:536:HOH:O	2.52	0.41
2:B:295:LEU:H	2:B:295:LEU:HD23	1.85	0.41
1:A:479:LEU:HB3	1:A:517:LEU:HD13	2.02	0.41
2:B:282:LEU:HB3	2:B:293:ILE:HD13	2.03	0.41
2:B:266:TRP:CH2	2:B:427:TYR:CZ	3.08	0.41
2:B:369:THR:HG22	2:B:398:TRP:CZ3	2.55	0.40
1:A:407:GLN:HB3	1:A:407:GLN:HE21	1.69	0.40
1:A:544:GLY:O	1:A:548:VAL:HG23	2.21	0.40
1:A:407:GLN:NE2	4:A:623:HOH:O	2.54	0.40
1:A:489:SER:HB3	1:A:528:LYS:NZ	2.37	0.40
2:B:175:ASN:HB3	2:B:178:ILE:HD12	2.04	0.40
2:B:266:TRP:HH2	2:B:427:TYR:CE1	2.40	0.40
2:B:282:LEU:HD11	2:B:296:THR:HG22	2.04	0.40
2:B:319:TYR:OH	2:B:385:LYS:HE3	2.22	0.40

There are no symmetry-related clashes.

## 5.3 Torsion angles [i](#)

### 5.3.1 Protein backbone [i](#)

In the following table, the Percentiles column shows the percent Ramachandran outliers of the chain as a percentile score with respect to all X-ray entries followed by that with respect to entries of similar resolution.

The Analysed column shows the number of residues for which the backbone conformation was analysed, and the total number of residues.

Mol	Chain	Analysed	Favoured	Allowed	Outliers	Percentiles	
1	A	548/561 (98%)	528 (96%)	19 (4%)	1 (0%)	47	58
2	B	394/440 (90%)	381 (97%)	12 (3%)	1 (0%)	41	50
All	All	942/1001 (94%)	909 (96%)	31 (3%)	2 (0%)	47	58

All (2) Ramachandran outliers are listed below:

Mol	Chain	Res	Type
1	A	285	GLY
2	B	285	GLY

### 5.3.2 Protein sidechains [i](#)

In the following table, the Percentiles column shows the percent sidechain outliers of the chain as a percentile score with respect to all X-ray entries followed by that with respect to entries of similar resolution.

The Analysed column shows the number of residues for which the sidechain conformation was analysed, and the total number of residues.

Mol	Chain	Analysed	Rotameric	Outliers	Percentiles	
1	A	492/501 (98%)	452 (92%)	40 (8%)	11	15
2	B	366/400 (92%)	348 (95%)	18 (5%)	25	35
All	All	858/901 (95%)	800 (93%)	58 (7%)	16	21

All (58) residues with a non-rotameric sidechain are listed below:

Mol	Chain	Res	Type
1	A	5	ILE

*Continued on next page...*

*Continued from previous page...*

<b>Mol</b>	<b>Chain</b>	<b>Res</b>	<b>Type</b>
1	A	20	LYS
1	A	27	THR
1	A	60	VAL
1	A	63	ILE
1	A	72	ARG
1	A	84	THR
1	A	137	ASN
1	A	177	ASP
1	A	187	LEU
1	A	194	GLU
1	A	203	GLU
1	A	210	LEU
1	A	216	THR
1	A	218	ASP
1	A	230	MET
1	A	248	GLU
1	A	260	LEU
1	A	276	VAL
1	A	287	LYS
1	A	301	LEU
1	A	351	THR
1	A	357	MET
1	A	374	LYS
1	A	399	GLU
1	A	411	ILE
1	A	422	LEU
1	A	448	ARG
1	A	454	LYS
1	A	459	THR
1	A	461	ARG
1	A	464	GLN
1	A	470	THR
1	A	479	LEU
1	A	489	SER
1	A	500	GLN
1	A	517	LEU
1	A	540	LYS
1	A	548	VAL
1	A	551	LEU
2	B	16	MET
2	B	35	VAL
2	B	84	THR

*Continued on next page...*

*Continued from previous page...*

Mol	Chain	Res	Type
2	B	90	VAL
2	B	92	LEU
2	B	193	LEU
2	B	215	THR
2	B	250	ASP
2	B	263	LYS
2	B	277	ARG
2	B	292	VAL
2	B	295	LEU
2	B	296	THR
2	B	301	LEU
2	B	312	GLU
2	B	326	ILE
2	B	385	LYS
2	B	417	VAL

Some sidechains can be flipped to improve hydrogen bonding and reduce clashes. All (13) such sidechains are listed below:

Mol	Chain	Res	Type
1	A	145	GLN
1	A	198	HIS
1	A	221	HIS
1	A	278	GLN
1	A	336	GLN
1	A	407	GLN
1	A	428	GLN
1	A	500	GLN
1	A	507	GLN
1	A	524	GLN
2	B	151	GLN
2	B	208	HIS
2	B	278	GLN

### 5.3.3 RNA [i](#)

There are no RNA molecules in this entry.

## 5.4 Non-standard residues in protein, DNA, RNA chains [i](#)

There are no non-standard protein/DNA/RNA residues in this entry.

## 5.5 Carbohydrates [i](#)

There are no carbohydrates in this entry.

## 5.6 Ligand geometry [i](#)

1 ligand is modelled in this entry.

In the following table, the Counts columns list the number of bonds (or angles) for which Mogul statistics could be retrieved, the number of bonds (or angles) that are observed in the model and the number of bonds (or angles) that are defined in the Chemical Component Dictionary. The Link column lists molecule types, if any, to which the group is linked. The Z score for a bond length (or angle) is the number of standard deviations the observed value is removed from the expected value. A bond length (or angle) with  $|Z| > 2$  is considered an outlier worth inspection. RMSZ is the root-mean-square of all Z scores of the bond lengths (or angles).

Mol	Type	Chain	Res	Link	Bond lengths			Bond angles		
					Counts	RMSZ	# Z  > 2	Counts	RMSZ	# Z  > 2
3	PZL	A	562	-	30,31,31	2.08	4 (13%)	35,44,44	2.36	12 (34%)

In the following table, the Chirals column lists the number of chiral outliers, the number of chiral centers analysed, the number of these observed in the model and the number defined in the Chemical Component Dictionary. Similar counts are reported in the Torsion and Rings columns. '-' means no outliers of that kind were identified.

Mol	Type	Chain	Res	Link	Chirals	Torsions	Rings
3	PZL	A	562	-	-	0/10/10/10	0/4/4/4

All (4) bond length outliers are listed below:

Mol	Chain	Res	Type	Atoms	Z	Observed(Å)	Ideal(Å)
3	A	562	PZL	C13-C16	-7.48	1.27	1.44
3	A	562	PZL	N21-N20	5.90	1.42	1.34
3	A	562	PZL	C23-C22	2.55	1.40	1.36
3	A	562	PZL	C3-C4	-2.30	1.35	1.40

All (12) bond angle outliers are listed below:

Mol	Chain	Res	Type	Atoms	Z	Observed(°)	Ideal(°)
3	A	562	PZL	C6-C18-C26	-7.53	101.37	114.50
3	A	562	PZL	F5-C2-C6	4.98	123.11	117.85
3	A	562	PZL	C7-C6-C2	4.31	119.56	116.43
3	A	562	PZL	BR17-C4-C1	3.42	124.46	117.81
3	A	562	PZL	O8-C3-C4	-3.31	115.83	120.55

*Continued on next page...*

Continued from previous page...

Mol	Chain	Res	Type	Atoms	Z	Observed(°)	Ideal(°)
3	A	562	PZL	C22-N21-N20	3.27	121.63	118.99
3	A	562	PZL	C9-O8-C3	3.16	123.55	118.48
3	A	562	PZL	BR17-C4-C3	-2.96	114.19	118.51
3	A	562	PZL	C23-C22-N21	-2.59	119.84	123.60
3	A	562	PZL	C13-C16-N19	-2.53	171.17	177.85
3	A	562	PZL	C14-C13-C16	2.34	122.66	119.54
3	A	562	PZL	C2-C3-C4	2.10	120.89	116.86

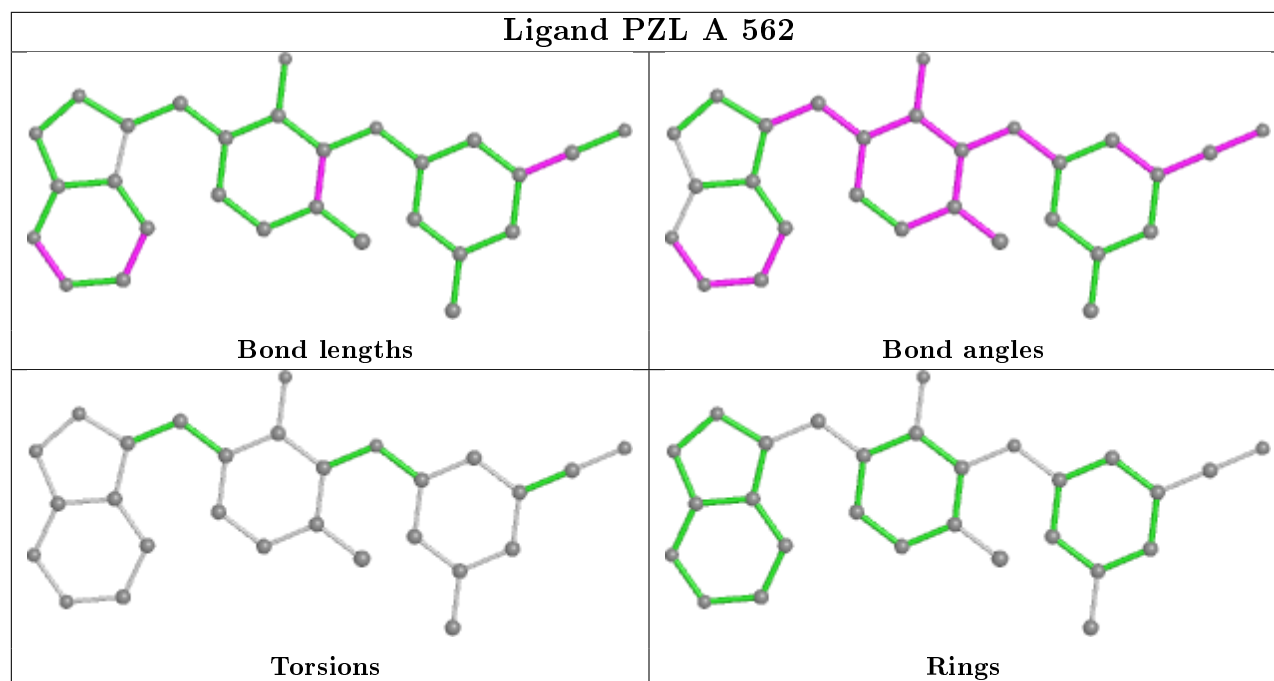
There are no chirality outliers.

There are no torsion outliers.

There are no ring outliers.

No monomer is involved in short contacts.

The following is a two-dimensional graphical depiction of Mogul quality analysis of bond lengths, bond angles, torsion angles, and ring geometry for all instances of the Ligand of Interest. In addition, ligands with molecular weight > 250 and outliers as shown on the validation Tables will also be included. For torsion angles, if less than 5% of the Mogul distribution of torsion angles is within 10 degrees of the torsion angle in question, then that torsion angle is considered an outlier. Any bond that is central to one or more torsion angles identified as an outlier by Mogul will be highlighted in the graph. For rings, the root-mean-square deviation (RMSD) between the ring in question and similar rings identified by Mogul is calculated over all ring torsion angles. If the average RMSD is greater than 60 degrees and the minimal RMSD between the ring in question and any Mogul-identified rings is also greater than 60 degrees, then that ring is considered an outlier. The outliers are highlighted in purple. The color gray indicates Mogul did not find sufficient equivalents in the CSD to analyse the geometry.



## 5.7 Other polymers [i](#)

There are no such residues in this entry.

## 5.8 Polymer linkage issues [i](#)

There are no chain breaks in this entry.



## 6 Fit of model and data

### 6.1 Protein, DNA and RNA chains

In the following table, the column labelled ‘#RSRZ> 2’ contains the number (and percentage) of RSRZ outliers, followed by percent RSRZ outliers for the chain as percentile scores relative to all X-ray entries and entries of similar resolution. The OWAB column contains the minimum, median, 95<sup>th</sup> percentile and maximum values of the occupancy-weighted average B-factor per residue. The column labelled ‘Q< 0.9’ lists the number of (and percentage) of residues with an average occupancy less than 0.9.

Mol	Chain	Analysed	<RSRZ>	#RSRZ>2	OWAB(Å <sup>2</sup> )	Q<0.9
1	A	551/561 (98%)	0.26	13 (2%) 59 66	39, 56, 73, 95	0
2	B	402/440 (91%)	0.42	22 (5%) 25 31	39, 54, 85, 90	0
All	All	953/1001 (95%)	0.33	35 (3%) 41 48	39, 55, 81, 95	0

All (35) RSRZ outliers are listed below:

Mol	Chain	Res	Type	RSRZ
2	B	14	PRO	7.0
2	B	232	TYR	5.3
2	B	5	ILE	4.4
2	B	13	LYS	4.0
2	B	301	LEU	3.9
2	B	15	GLY	3.6
2	B	12	LEU	3.6
2	B	69	THR	3.5
2	B	284	ARG	3.5
2	B	6	GLU	3.3
2	B	24	TRP	3.1
2	B	295	LEU	3.1
2	B	250	ASP	2.9
2	B	116	PHE	2.9
1	A	52	PRO	2.8
1	A	426	TRP	2.8
1	A	547	GLN	2.7
2	B	346	PHE	2.7
2	B	266	TRP	2.7
2	B	11	LYS	2.7
1	A	193	LEU	2.5
1	A	198	HIS	2.5
1	A	548	VAL	2.4
1	A	24	TRP	2.3

*Continued on next page...*

*Continued from previous page...*

Mol	Chain	Res	Type	RSRZ
2	B	293	ILE	2.3
2	B	68	SER	2.3
2	B	90	VAL	2.3
2	B	298	GLU	2.3
1	A	402	TRP	2.3
1	A	553	SER	2.2
2	B	281	LYS	2.1
1	A	554	ALA	2.1
1	A	53	GLU	2.1
1	A	219	LYS	2.1
1	A	220	LYS	2.0

## 6.2 Non-standard residues in protein, DNA, RNA chains [i](#)

There are no non-standard protein/DNA/RNA residues in this entry.

## 6.3 Carbohydrates [i](#)

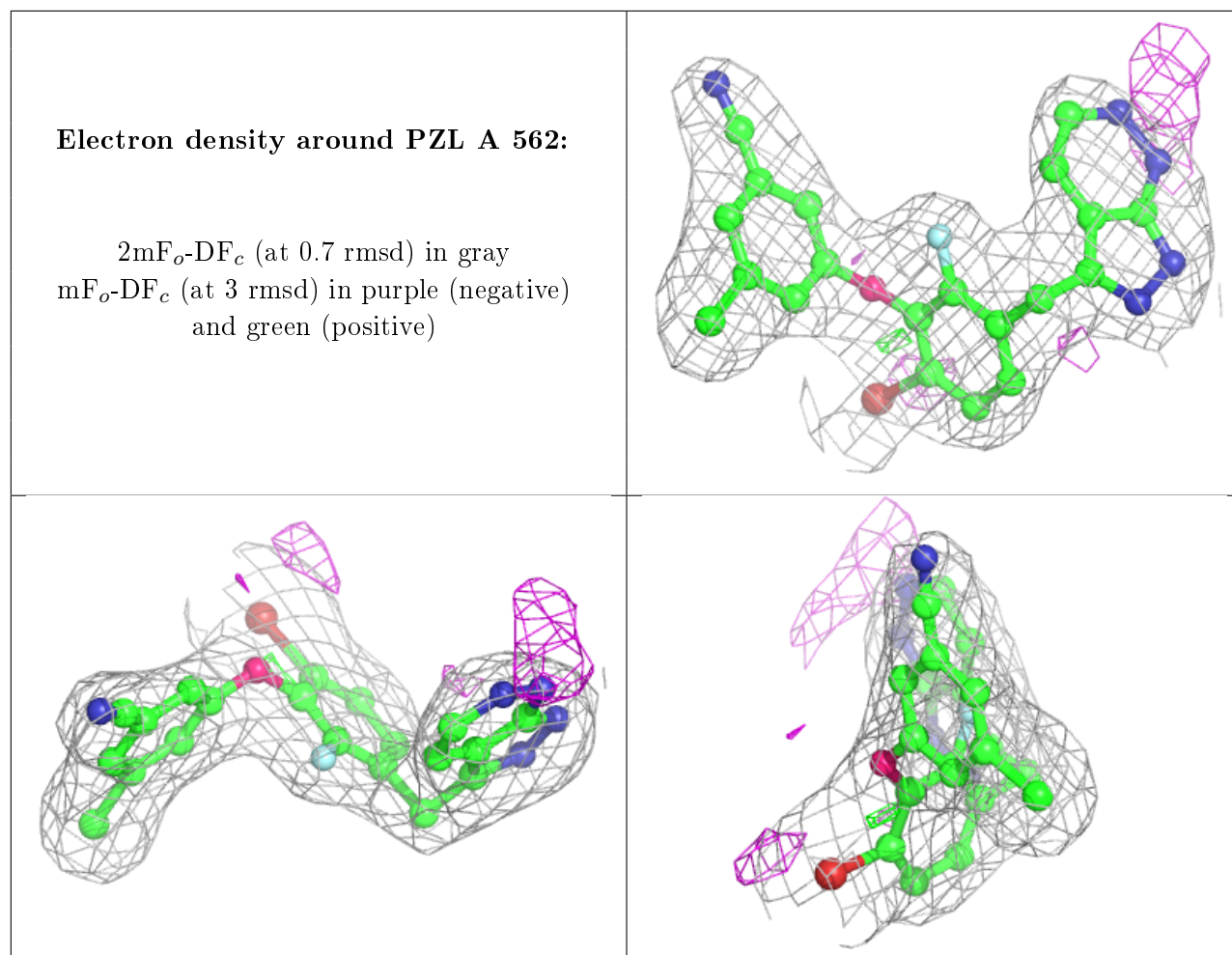
There are no carbohydrates in this entry.

## 6.4 Ligands [i](#)

In the following table, the Atoms column lists the number of modelled atoms in the group and the number defined in the chemical component dictionary. The B-factors column lists the minimum, median, 95<sup>th</sup> percentile and maximum values of B factors of atoms in the group. The column labelled 'Q<0.9' lists the number of atoms with occupancy less than 0.9.

Mol	Type	Chain	Res	Atoms	RSCC	RSR	B-factors(Å <sup>2</sup> )	Q<0.9
3	PZL	A	562	28/28	0.97	0.13	46,48,52,53	0

The following is a graphical depiction of the model fit to experimental electron density of all instances of the Ligand of Interest. In addition, ligands with molecular weight > 250 and outliers as shown on the geometry validation Tables will also be included. Each fit is shown from different orientation to approximate a three-dimensional view.



## 6.5 Other polymers [i](#)

There are no such residues in this entry.