



Full wwPDB X-ray Structure Validation Report ⓘ

May 26, 2020 – 12:52 am BST

PDB ID : 5DXB
Title : Estrogen Receptor Alpha Ligand Binding Domain Y537S Mutant in Complex with Stapled Peptide SRC2-P1 and Estradiol
Authors : Fanning, S.W.; Speltz, T.E.; Mayne, C.G.; Tajkhorshid, E.; Greene, G.L.; Moore, T.W.
Deposited on : 2015-09-23
Resolution : 2.08 Å(reported)

This is a Full wwPDB X-ray Structure Validation Report for a publicly released PDB entry.

We welcome your comments at validation@mail.wwpdb.org

A user guide is available at

<https://www.wwpdb.org/validation/2017/XrayValidationReportHelp>

with specific help available everywhere you see the ⓘ symbol.

The following versions of software and data (see [references ⓘ](#)) were used in the production of this report:

MolProbity : 4.02b-467
Mogul : 1.8.5 (274361), CSD as541be (2020)
Xtriage (Phenix) : 1.13
EDS : 2.11
buster-report : 1.1.7 (2018)
Percentile statistics : 20191225.v01 (using entries in the PDB archive December 25th 2019)
Refmac : 5.8.0158
CCP4 : 7.0.044 (Gargrove)
Ideal geometry (proteins) : Engh & Huber (2001)
Ideal geometry (DNA, RNA) : Parkinson et al. (1996)
Validation Pipeline (wwPDB-VP) : 2.11

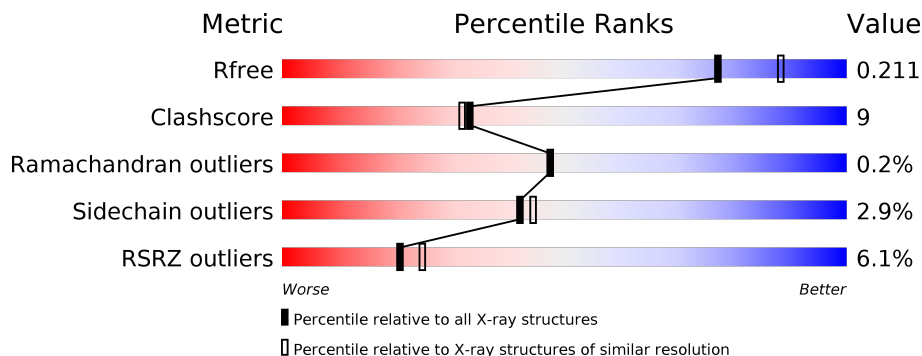
1 Overall quality at a glance

The following experimental techniques were used to determine the structure:

X-RAY DIFFRACTION

The reported resolution of this entry is 2.08 Å.

Percentile scores (ranging between 0-100) for global validation metrics of the entry are shown in the following graphic. The table shows the number of entries on which the scores are based.



Metric	Whole archive (#Entries)	Similar resolution (#Entries, resolution range(Å))
R_{free}	130704	6189 (2.10-2.06)
Clashscore	141614	6738 (2.10-2.06)
Ramachandran outliers	138981	6663 (2.10-2.06)
Sidechain outliers	138945	6664 (2.10-2.06)
RSRZ outliers	127900	6057 (2.10-2.06)

The table below summarises the geometric issues observed across the polymeric chains and their fit to the electron density. The red, orange, yellow and green segments on the lower bar indicate the fraction of residues that contain outliers for ≥ 3 , 2, 1 and 0 types of geometric quality criteria respectively. A grey segment represents the fraction of residues that are not modelled. The numeric value for each fraction is indicated below the corresponding segment, with a dot representing fractions $\leq 5\%$. The upper red bar (where present) indicates the fraction of residues that have poor fit to the electron density. The numeric value is given above the bar.

Mol	Chain	Length	Quality of chain
1	A	261	 3% 79% 8% 11%
2	B	261	 5% 74% 12% 14%
3	D	13	 15% 54% 23% 23%
3	E	13	 38% 31% 23% 31% 15%

The following table lists non-polymeric compounds, carbohydrate monomers and non-standard residues in protein, DNA, RNA chains that are outliers for geometric or electron-density-fit crite-

ria:

Mol	Type	Chain	Res	Chirality	Geometry	Clashes	Electron density
5	GOL	B	602	-	-	X	-

2 Entry composition i

There are 7 unique types of molecules in this entry. The entry contains 4049 atoms, of which 16 are hydrogens and 0 are deuteriums.

In the tables below, the ZeroOcc column contains the number of atoms modelled with zero occupancy, the AltConf column contains the number of residues with at least one atom in alternate conformation and the Trace column contains the number of residues modelled with at most 2 atoms.

- Molecule 1 is a protein called Estrogen receptor.

Mol	Chain	Residues	Atoms					ZeroOcc	AltConf	Trace
			Total	C	N	O	S			
1	A	232	1867	1196	324	327	20	0	4	0

There are 4 discrepancies between the modelled and reference sequences:

Chain	Residue	Modelled	Actual	Comment	Reference
A	294	MET	-	initiating methionine	UNP P03372
A	295	ASP	-	expression tag	UNP P03372
A	296	PRO	-	expression tag	UNP P03372
A	537	SER	TYR	engineered mutation	UNP P03372

- Molecule 2 is a protein called Estrogen receptor.

Mol	Chain	Residues	Atoms					ZeroOcc	AltConf	Trace
			Total	C	N	O	S			
2	B	224	1763	1126	307	311	19	0	1	0

There are 4 discrepancies between the modelled and reference sequences:

Chain	Residue	Modelled	Actual	Comment	Reference
B	294	MET	-	initiating methionine	UNP P03372
B	295	ASP	-	expression tag	UNP P03372
B	296	PRO	-	expression tag	UNP P03372
B	537	SER	TYR	engineered mutation	UNP P03372

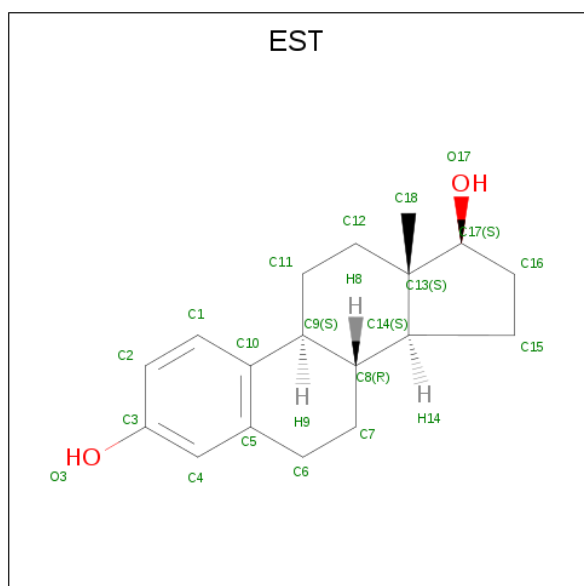
- Molecule 3 is a protein called Nuclear receptor coactivator 2.

Mol	Chain	Residues	Atoms				ZeroOcc	AltConf	Trace
			Total	C	N	O			
3	D	13	102	65	21	16	0	0	1
3	E	11	85	55	17	13	0	0	2

There are 8 discrepancies between the modelled and reference sequences:

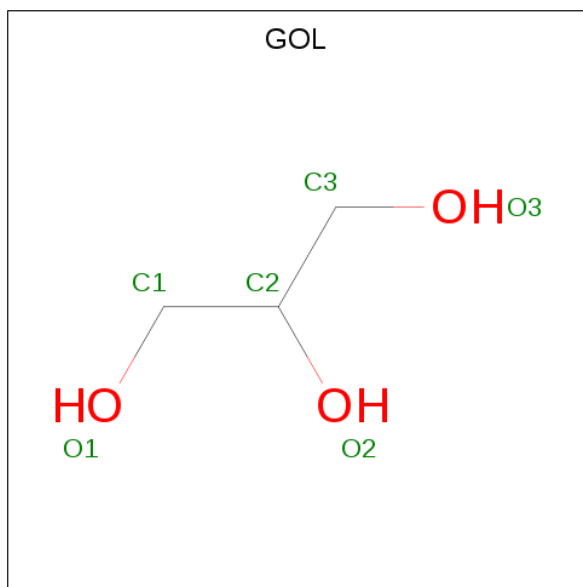
Chain	Residue	Modelled	Actual	Comment	Reference
D	1	ACE	-	acetylation	UNP Q15596
D	4	MK8	ILE	conflict	UNP Q15596
D	8	66D	LEU	conflict	UNP Q15596
D	13	NH2	-	amidation	UNP Q15596
E	1	ACE	-	acetylation	UNP Q15596
E	4	MK8	ILE	conflict	UNP Q15596
E	8	66D	LEU	conflict	UNP Q15596
E	13	NH2	-	amidation	UNP Q15596

- Molecule 4 is ESTRADIOL (three-letter code: EST) (formula: C₁₈H₂₄O₂).



Mol	Chain	Residues	Atoms			ZeroOcc	AltConf
4	A	1	Total	C	O	0	0
			20	18	2		
4	B	1	Total	C	O	0	0
			20	18	2		

- Molecule 5 is GLYCEROL (three-letter code: GOL) (formula: C₃H₈O₃).



Mol	Chain	Residues	Atoms				ZeroOcc	AltConf
5	B	1	Total	C	H	O	0	0
			14	3	8	3		
5	B	1	Total	C	H	O	0	0
			14	3	8	3		

- Molecule 6 is CHLORIDE ION (three-letter code: CL) (formula: Cl).

Mol	Chain	Residues	Atoms		ZeroOcc	AltConf
6	B	1	Total	Cl	0	0
			1	1		

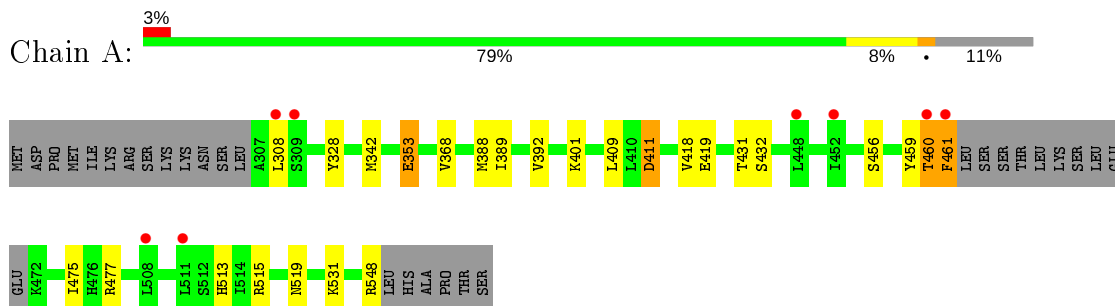
- Molecule 7 is water.

Mol	Chain	Residues	Atoms		ZeroOcc	AltConf
7	A	99	Total	O	0	0
			99	99		
7	B	63	Total	O	0	0
			63	63		
7	D	1	Total	O	0	0
			1	1		

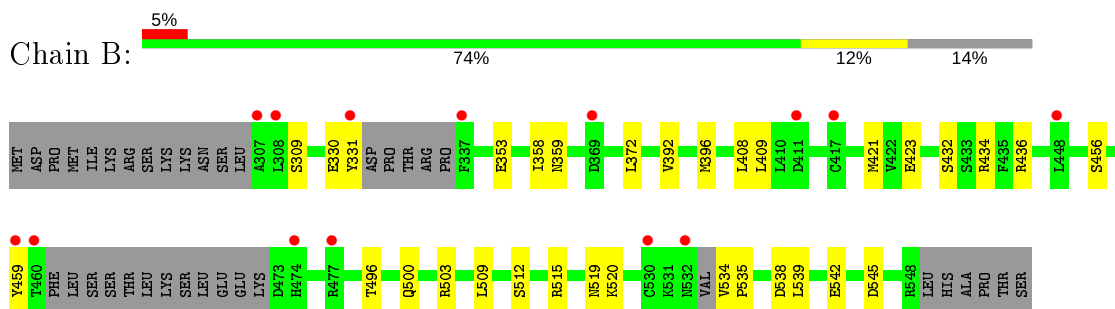
3 Residue-property plots [i](#)

These plots are drawn for all protein, RNA and DNA chains in the entry. The first graphic for a chain summarises the proportions of the various outlier classes displayed in the second graphic. The second graphic shows the sequence view annotated by issues in geometry and electron density. Residues are color-coded according to the number of geometric quality criteria for which they contain at least one outlier: green = 0, yellow = 1, orange = 2 and red = 3 or more. A red dot above a residue indicates a poor fit to the electron density ($RSRZ > 2$). Stretches of 2 or more consecutive residues without any outlier are shown as a green connector. Residues present in the sample, but not in the model, are shown in grey.

- Molecule 1: Estrogen receptor



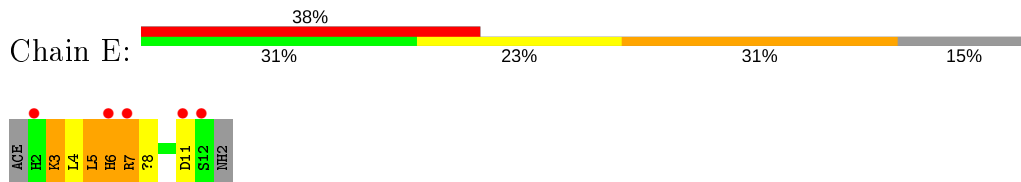
- Molecule 2: Estrogen receptor



- Molecule 3: Nuclear receptor coactivator 2



- Molecule 3: Nuclear receptor coactivator 2



4 Data and refinement statistics

Property	Value	Source
Space group	P 1 21 1	Depositor
Cell constants a, b, c, α , β , γ	56.01Å 85.94Å 58.27Å 90.00° 108.41° 90.00°	Depositor
Resolution (Å)	27.59 – 2.08 27.59 – 2.08	Depositor EDS
% Data completeness (in resolution range)	92.9 (27.59-2.08) 92.9 (27.59-2.08)	Depositor EDS
R_{merge}	(Not available)	Depositor
R_{sym}	(Not available)	Depositor
$\langle I/\sigma(I) \rangle$ ¹	3.59 (at 2.08Å)	Xtrriage
Refinement program	PHENIX 1.9_1692	Depositor
R, R_{free}	0.177 , 0.210 0.182 , 0.211	Depositor DCC
R_{free} test set	1502 reflections (5.11%)	wwPDB-VP
Wilson B-factor (Å ²)	25.2	Xtrriage
Anisotropy	0.062	Xtrriage
Bulk solvent k_{sol} (e/Å ³), B_{sol} (Å ²)	0.36 , 50.5	EDS
L-test for twinning ²	$\langle L \rangle = 0.49$, $\langle L^2 \rangle = 0.32$	Xtrriage
Estimated twinning fraction	0.028 for l,-k,h	Xtrriage
F_o, F_c correlation	0.95	EDS
Total number of atoms	4049	wwPDB-VP
Average B, all atoms (Å ²)	32.0	wwPDB-VP

Xtrriage's analysis on translational NCS is as follows: *The largest off-origin peak in the Patterson function is 7.02% of the height of the origin peak. No significant pseudotranslation is detected.*

¹Intensities estimated from amplitudes.

²Theoretical values of $\langle |L| \rangle$, $\langle L^2 \rangle$ for acentric reflections are 0.5, 0.333 respectively for untwinned datasets, and 0.375, 0.2 for perfectly twinned datasets.

5 Model quality [i](#)

5.1 Standard geometry [i](#)

Bond lengths and bond angles in the following residue types are not validated in this section: GOL, EST, SCH, ACE, CL, NH2, 66D, MK8

The Z score for a bond length (or angle) is the number of standard deviations the observed value is removed from the expected value. A bond length (or angle) with $|Z| > 5$ is considered an outlier worth inspection. RMSZ is the root-mean-square of all Z scores of the bond lengths (or angles).

Mol	Chain	Bond lengths		Bond angles	
		RMSZ	# $ Z > 5$	RMSZ	# $ Z > 5$
1	A	0.33	1/1894 (0.1%)	0.51	2/2560 (0.1%)
2	B	0.32	0/1792	0.46	0/2419
3	D	1.66	2/79 (2.5%)	1.33	1/101 (1.0%)
3	E	1.82	3/64 (4.7%)	1.48	1/80 (1.2%)
All	All	0.46	6/3829 (0.2%)	0.55	4/5160 (0.1%)

All (6) bond length outliers are listed below:

Mol	Chain	Res	Type	Atoms	Z	Observed(Å)	Ideal(Å)
3	E	5	LEU	CA-C	-6.88	1.35	1.52
3	E	6	HIS	CA-C	-6.79	1.35	1.52
3	E	7	ARG	CA-C	-5.57	1.38	1.52
3	D	5	LEU	CA-C	-5.16	1.39	1.52
3	D	7	ARG	CA-C	-5.15	1.39	1.52
1	A	353	GLU	CD-OE1	5.04	1.31	1.25

All (4) bond angle outliers are listed below:

Mol	Chain	Res	Type	Atoms	Z	Observed(°)	Ideal(°)
1	A	411	ASP	CB-CG-OD2	7.69	125.22	118.30
3	E	6	HIS	CA-CB-CG	-7.39	101.03	113.60
1	A	411	ASP	CB-CG-OD1	-5.71	113.16	118.30
3	D	2	HIS	CA-CB-CG	-5.12	104.90	113.60

There are no chirality outliers.

There are no planarity outliers.

5.2 Too-close contacts [i](#)

In the following table, the Non-H and H(model) columns list the number of non-hydrogen atoms and hydrogen atoms in the chain respectively. The H(added) column lists the number of hydrogen atoms added and optimized by MolProbity. The Clashes column lists the number of clashes within the asymmetric unit, whereas Symm-Clashes lists symmetry related clashes.

Mol	Chain	Non-H	H(model)	H(added)	Clashes	Symm-Clashes
1	A	1867	0	1900	31	2
2	B	1763	0	1792	37	1
3	D	102	0	92	3	1
3	E	85	0	77	11	0
4	A	20	0	23	1	0
4	B	20	0	23	1	0
5	B	12	16	16	8	0
6	B	1	0	0	0	0
7	A	99	0	0	1	1
7	B	63	0	0	0	1
7	D	1	0	0	0	0
All	All	4033	16	3923	67	3

The all-atom clashscore is defined as the number of clashes found per 1000 atoms (including hydrogen atoms). The all-atom clashscore for this structure is 9.

All (67) close contacts within the same asymmetric unit are listed below, sorted by their clash magnitude.

Atom-1	Atom-2	Interatomic distance (Å)	Clash overlap (Å)
2:B:353:GLU:OE1	4:B:601:EST:O3	1.81	0.98
1:A:353:GLU:OE1	4:A:1000:EST:O3	1.80	0.97
1:A:342[B]:MET:HG2	1:A:418:VAL:CG2	2.07	0.83
1:A:419:GLU:OE1	1:A:531:LYS:NZ	2.15	0.78
1:A:513[B]:HIS:CE1	2:B:459:TYR:HD2	2.01	0.78
1:A:459:TYR:OH	2:B:434:ARG:NE	2.21	0.72
3:E:4:MK8:O	3:E:7:ARG:N	2.22	0.72
1:A:308:LEU:CD1	1:A:477:ARG:HD2	2.19	0.71
3:E:4:MK8:HDA	3:E:4:MK8:C	2.20	0.70
2:B:372:LEU:HD23	3:E:6:HIS:CE1	2.25	0.70
2:B:372:LEU:HD23	3:E:6:HIS:HE1	1.58	0.68
2:B:539:LEU:HD13	3:E:4:MK8:HD	1.75	0.68
2:B:330:GLU:O	2:B:331:TYR:HB2	1.93	0.66
1:A:342[B]:MET:HG2	1:A:418:VAL:HG21	1.76	0.66
1:A:513[B]:HIS:CE1	2:B:459:TYR:CD2	2.82	0.66
1:A:389:ILE:HA	1:A:392[B]:VAL:HG12	1.78	0.66

Continued on next page...

Continued from previous page...

Atom-1	Atom-2	Interatomic distance (Å)	Clash overlap (Å)
1:A:308:LEU:HD11	1:A:477:ARG:HD2	1.79	0.63
2:B:456:SER:HA	2:B:515:ARG:NH2	2.12	0.63
2:B:409:LEU:H	5:B:602:GOL:H2	1.64	0.63
1:A:342[B]:MET:HG2	1:A:418:VAL:HG23	1.82	0.62
3:D:4:MK8:C	3:D:4:MK8:HDA	2.34	0.58
1:A:513[B]:HIS:CD2	2:B:459:TYR:CE2	2.92	0.57
2:B:358:ILE:HD13	3:E:8:66D:CD2	2.35	0.57
1:A:389:ILE:HA	1:A:392[B]:VAL:CG1	2.35	0.57
2:B:542:GLU:OE1	3:E:3:LYS:HB2	2.06	0.56
2:B:396:MET:CE	2:B:436:ARG:HA	2.37	0.55
2:B:496:THR:O	2:B:500:GLN:HG3	2.06	0.55
3:E:3:LYS:O	3:E:6:HIS:HB2	2.08	0.54
3:E:3:LYS:H	3:E:6:HIS:HB2	1.71	0.54
1:A:513[B]:HIS:NE2	2:B:459:TYR:CE2	2.76	0.54
1:A:456:SER:HA	1:A:515:ARG:NH2	2.23	0.52
3:E:4:MK8:CD	3:E:4:MK8:C	2.85	0.52
1:A:392[A]:VAL:HG13	1:A:432:SER:HA	1.91	0.52
1:A:548:ARG:N	1:A:548:ARG:HD3	2.24	0.51
1:A:513[B]:HIS:ND1	2:B:459:TYR:HD2	2.09	0.51
2:B:409:LEU:H	5:B:602:GOL:H11	1.76	0.51
1:A:513[B]:HIS:NE2	2:B:459:TYR:HE2	2.10	0.50
2:B:538:ASP:O	2:B:542:GLU:HG3	2.12	0.49
1:A:389:ILE:CA	1:A:392[B]:VAL:HG12	2.42	0.49
1:A:519:ASN:ND2	2:B:519:ASN:OD1	2.33	0.49
2:B:409:LEU:H	5:B:602:GOL:C1	2.26	0.49
1:A:308:LEU:HD13	1:A:477:ARG:HD2	1.95	0.47
2:B:396:MET:HE2	2:B:436:ARG:HA	1.96	0.47
1:A:513[B]:HIS:CD2	2:B:459:TYR:HE2	2.31	0.46
2:B:392:VAL:HG13	2:B:432:SER:HA	1.98	0.46
3:D:4:MK8:C	3:D:4:MK8:CD	2.93	0.46
1:A:392[B]:VAL:HG23	1:A:432:SER:CA	2.45	0.45
1:A:368:VAL:HG22	7:A:1117:HOH:O	2.16	0.45
2:B:520:LYS:HD3	2:B:520:LYS:HA	1.82	0.45
2:B:534:VAL:HG23	2:B:535:PRO:HD2	1.99	0.45
2:B:396:MET:HE3	2:B:436:ARG:HA	2.00	0.44
1:A:388:MET:O	1:A:392[B]:VAL:HG12	2.18	0.44
2:B:421:MET:HG3	2:B:421:MET:O	2.16	0.44
2:B:409:LEU:H	5:B:602:GOL:C2	2.30	0.43
2:B:503:ARG:NE	5:B:603:GOL:H12	2.33	0.43
3:D:8:66D:C	3:D:8:66D:CD2	2.97	0.43
1:A:392[B]:VAL:HG23	1:A:432:SER:HA	2.01	0.43

Continued on next page...

Continued from previous page...

Atom-1	Atom-2	Interatomic distance (Å)	Clash overlap (Å)
1:A:401:LYS:HD3	1:A:409:LEU:HG	2.02	0.42
1:A:461:PHE:HE2	1:A:475:ILE:HD12	1.84	0.42
2:B:509:LEU:HA	2:B:509:LEU:HD23	1.88	0.42
2:B:409:LEU:N	5:B:602:GOL:H2	2.34	0.42
3:E:7:ARG:HG2	3:E:7:ARG:O	2.19	0.41
2:B:534:VAL:CG2	2:B:535:PRO:HD2	2.51	0.41
1:A:392[B]:VAL:HG21	1:A:431:THR:HG22	2.02	0.41
2:B:408:LEU:CA	5:B:602:GOL:H11	2.51	0.41
2:B:408:LEU:HA	5:B:602:GOL:H11	2.02	0.40
1:A:513[B]:HIS:NE2	2:B:459:TYR:CD2	2.90	0.40

All (3) symmetry-related close contacts are listed below. The label for Atom-2 includes the symmetry operator and encoded unit-cell translations to be applied.

Atom-1	Atom-2	Interatomic distance (Å)	Clash overlap (Å)
1:A:411:ASP:OD2	3:D:7:ARG:NH2[2_645]	1.57	0.63
7:A:1166:HOH:O	7:B:753:HOH:O[1_554]	2.05	0.15
1:A:328:TYR:OH	2:B:359:ASN:ND2[1_554]	2.11	0.09

5.3 Torsion angles [i](#)

5.3.1 Protein backbone [i](#)

In the following table, the Percentiles column shows the percent Ramachandran outliers of the chain as a percentile score with respect to all X-ray entries followed by that with respect to entries of similar resolution.

The Analysed column shows the number of residues for which the backbone conformation was analysed, and the total number of residues.

Mol	Chain	Analysed	Favoured	Allowed	Outliers	Percentiles	
1	A	231/261 (88%)	227 (98%)	3 (1%)	1 (0%)	34	31
2	B	217/261 (83%)	215 (99%)	2 (1%)	0	100	100
3	D	9/13 (69%)	8 (89%)	1 (11%)	0	100	100
3	E	7/13 (54%)	6 (86%)	1 (14%)	0	100	100
All	All	464/548 (85%)	456 (98%)	7 (2%)	1 (0%)	47	47

All (1) Ramachandran outliers are listed below:

Mol	Chain	Res	Type
1	A	460	THR

5.3.2 Protein sidechains [i](#)

In the following table, the Percentiles column shows the percent sidechain outliers of the chain as a percentile score with respect to all X-ray entries followed by that with respect to entries of similar resolution.

The Analysed column shows the number of residues for which the sidechain conformation was analysed, and the total number of residues.

Mol	Chain	Analysed	Rotameric	Outliers	Percentiles	
1	A	206/235 (88%)	204 (99%)	2 (1%)	76	81
2	B	194/236 (82%)	190 (98%)	4 (2%)	53	57
3	D	9/9 (100%)	6 (67%)	3 (33%)	0	0
3	E	7/9 (78%)	4 (57%)	3 (43%)	0	0
All	All	416/489 (85%)	404 (97%)	12 (3%)	42	44

All (12) residues with a non-rotameric sidechain are listed below:

Mol	Chain	Res	Type
1	A	460	THR
1	A	461	PHE
2	B	309	SER
2	B	423	GLU
2	B	512	SER
2	B	545	ASP
3	D	2	HIS
3	D	5	LEU
3	D	11	ASP
3	E	3	LYS
3	E	5	LEU
3	E	11	ASP

Some sidechains can be flipped to improve hydrogen bonding and reduce clashes. All (1) such sidechains are listed below:

Mol	Chain	Res	Type
3	E	6	HIS

5.3.3 RNA [i](#)

There are no RNA molecules in this entry.

5.4 Non-standard residues in protein, DNA, RNA chains [i](#)

5 non-standard protein/DNA/RNA residues are modelled in this entry.

In the following table, the Counts columns list the number of bonds (or angles) for which Mogul statistics could be retrieved, the number of bonds (or angles) that are observed in the model and the number of bonds (or angles) that are defined in the Chemical Component Dictionary. The Link column lists molecule types, if any, to which the group is linked. The Z score for a bond length (or angle) is the number of standard deviations the observed value is removed from the expected value. A bond length (or angle) with $|Z| > 2$ is considered an outlier worth inspection. RMSZ is the root-mean-square of all Z scores of the bond lengths (or angles).

Mol	Type	Chain	Res	Link	Bond lengths			Bond angles		
					Counts	RMSZ	# Z > 2	Counts	RMSZ	# Z > 2
3	MK8	D	4	3	5,8,9	1.73	1 (20%)	4,10,12	1.07	0
1	SCH	A	530	1	6,7,8	1.16	1 (16%)	3,7,9	1.84	1 (33%)
3	66D	D	8	3	6,9,10	2.25	2 (33%)	7,12,14	0.62	0
3	66D	E	8	3	6,9,10	2.37	2 (33%)	7,12,14	0.64	0
3	MK8	E	4	3	5,8,9	2.92	1 (20%)	4,10,12	1.26	0

In the following table, the Chirals column lists the number of chiral outliers, the number of chiral centers analysed, the number of these observed in the model and the number defined in the Chemical Component Dictionary. Similar counts are reported in the Torsion and Rings columns. '-' means no outliers of that kind were identified.

Mol	Type	Chain	Res	Link	Chirals	Torsions	Rings
3	MK8	D	4	3	-	1/6/8/11	-
1	SCH	A	530	1	-	0/2/6/8	-
3	66D	D	8	3	-	2/8/10/13	-
3	66D	E	8	3	-	2/8/10/13	-
3	MK8	E	4	3	-	1/6/8/11	-

All (7) bond length outliers are listed below:

Mol	Chain	Res	Type	Atoms	Z	Observed(Å)	Ideal(Å)
3	E	4	MK8	CB-CA	-6.14	1.48	1.55
3	E	8	66D	CB-CA	-5.02	1.49	1.54
3	D	8	66D	CB-CA	-4.16	1.50	1.54
3	D	4	MK8	CB-CA	-3.49	1.51	1.55

Continued on next page...

Continued from previous page...

Mol	Chain	Res	Type	Atoms	Z	Observed(Å)	Ideal(Å)
3	D	8	66D	CB-CC	-2.85	1.45	1.54
1	A	530	SCH	CB-SG	-2.08	1.74	1.81
3	E	8	66D	CE-CD	-2.03	1.38	1.51

All (1) bond angle outliers are listed below:

Mol	Chain	Res	Type	Atoms	Z	Observed(°)	Ideal(°)
1	A	530	SCH	CB-SG-SD	2.96	111.50	103.82

There are no chirality outliers.

All (6) torsion outliers are listed below:

Mol	Chain	Res	Type	Atoms
3	D	8	66D	N-CA-CB-CC
3	E	8	66D	C-CA-CB-CC
3	D	4	MK8	CA-CB-CG-CD
3	E	4	MK8	CA-CB-CG-CD
3	D	8	66D	CB-CC-CD-CE
3	E	8	66D	O-C-CA-CB2

There are no ring outliers.

4 monomers are involved in 8 short contacts:

Mol	Chain	Res	Type	Clashes	Symm-Clashes
3	D	4	MK8	2	0
3	D	8	66D	1	0
3	E	8	66D	1	0
3	E	4	MK8	4	0

5.5 Carbohydrates [i](#)

There are no carbohydrates in this entry.

5.6 Ligand geometry [i](#)

Of 5 ligands modelled in this entry, 1 is monoatomic - leaving 4 for Mogul analysis.

In the following table, the Counts columns list the number of bonds (or angles) for which Mogul statistics could be retrieved, the number of bonds (or angles) that are observed in the model and the number of bonds (or angles) that are defined in the Chemical Component Dictionary. The

Link column lists molecule types, if any, to which the group is linked. The Z score for a bond length (or angle) is the number of standard deviations the observed value is removed from the expected value. A bond length (or angle) with $|Z| > 2$ is considered an outlier worth inspection. RMSZ is the root-mean-square of all Z scores of the bond lengths (or angles).

Mol	Type	Chain	Res	Link	Bond lengths			Bond angles		
					Counts	RMSZ	# Z > 2	Counts	RMSZ	# Z > 2
4	EST	A	1000	-	23,23,23	1.68	4 (17%)	36,36,36	1.23	4 (11%)
5	GOL	B	602	-	5,5,5	0.35	0	5,5,5	0.55	0
5	GOL	B	603	-	5,5,5	0.36	0	5,5,5	0.73	0
4	EST	B	601	-	23,23,23	1.80	7 (30%)	36,36,36	1.39	6 (16%)

In the following table, the Chirals column lists the number of chiral outliers, the number of chiral centers analysed, the number of these observed in the model and the number defined in the Chemical Component Dictionary. Similar counts are reported in the Torsion and Rings columns. '-' means no outliers of that kind were identified.

Mol	Type	Chain	Res	Link	Chirals	Torsions	Rings
4	EST	A	1000	-	-	-	0/4/4/4
5	GOL	B	602	-	-	2/4/4/4	-
5	GOL	B	603	-	-	2/4/4/4	-
4	EST	B	601	-	-	-	0/4/4/4

All (11) bond length outliers are listed below:

Mol	Chain	Res	Type	Atoms	Z	Observed(Å)	Ideal(Å)
4	B	601	EST	C5-C10	4.15	1.46	1.40
4	A	1000	EST	C5-C10	3.48	1.45	1.40
4	B	601	EST	C10-C9	-2.98	1.48	1.52
4	B	601	EST	C13-C17	-2.80	1.49	1.54
4	A	1000	EST	C1-C10	-2.80	1.36	1.39
4	B	601	EST	C11-C9	-2.53	1.50	1.53
4	B	601	EST	C18-C13	-2.45	1.50	1.54
4	B	601	EST	C1-C10	-2.43	1.36	1.39
4	A	1000	EST	C10-C9	-2.40	1.48	1.52
4	B	601	EST	C13-C14	-2.28	1.50	1.55
4	A	1000	EST	C13-C14	-2.20	1.50	1.55

All (10) bond angle outliers are listed below:

Mol	Chain	Res	Type	Atoms	Z	Observed(°)	Ideal(°)
4	B	601	EST	C10-C9-C8	3.22	115.50	111.58
4	B	601	EST	C7-C8-C9	-2.68	106.66	109.28

Continued on next page...

Continued from previous page...

Mol	Chain	Res	Type	Atoms	Z	Observed(°)	Ideal(°)
4	B	601	EST	C14-C13-C17	2.63	102.05	99.27
4	A	1000	EST	C16-C17-C13	-2.60	102.47	104.53
4	B	601	EST	C16-C17-C13	-2.53	102.52	104.53
4	A	1000	EST	C10-C9-C8	2.51	114.64	111.58
4	B	601	EST	C11-C12-C13	-2.44	108.59	112.78
4	B	601	EST	C12-C13-C14	2.41	111.01	107.27
4	A	1000	EST	C13-C14-C8	-2.37	110.87	114.38
4	A	1000	EST	C12-C13-C14	2.04	110.44	107.27

There are no chirality outliers.

All (4) torsion outliers are listed below:

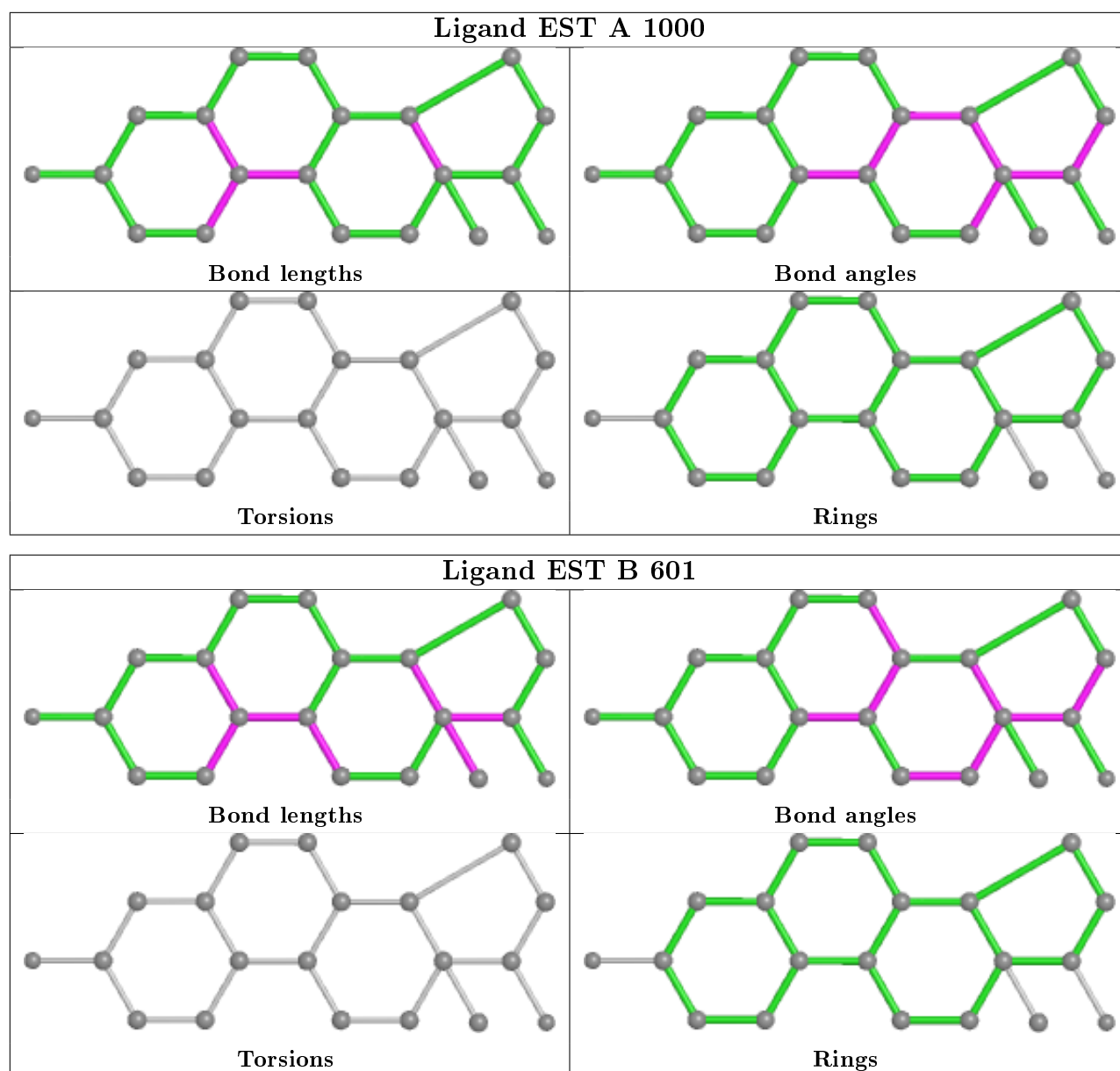
Mol	Chain	Res	Type	Atoms
5	B	603	GOL	O1-C1-C2-C3
5	B	603	GOL	O1-C1-C2-O2
5	B	602	GOL	O1-C1-C2-O2
5	B	602	GOL	O1-C1-C2-C3

There are no ring outliers.

4 monomers are involved in 10 short contacts:

Mol	Chain	Res	Type	Clashes	Symm-Clashes
4	A	1000	EST	1	0
5	B	602	GOL	7	0
5	B	603	GOL	1	0
4	B	601	EST	1	0

The following is a two-dimensional graphical depiction of Mogul quality analysis of bond lengths, bond angles, torsion angles, and ring geometry for all instances of the Ligand of Interest. In addition, ligands with molecular weight > 250 and outliers as shown on the validation Tables will also be included. For torsion angles, if less than 5% of the Mogul distribution of torsion angles is within 10 degrees of the torsion angle in question, then that torsion angle is considered an outlier. Any bond that is central to one or more torsion angles identified as an outlier by Mogul will be highlighted in the graph. For rings, the root-mean-square deviation (RMSD) between the ring in question and similar rings identified by Mogul is calculated over all ring torsion angles. If the average RMSD is greater than 60 degrees and the minimal RMSD between the ring in question and any Mogul-identified rings is also greater than 60 degrees, then that ring is considered an outlier. The outliers are highlighted in purple. The color gray indicates Mogul did not find sufficient equivalents in the CSD to analyse the geometry.



5.7 Other polymers [i](#)

There are no such residues in this entry.

5.8 Polymer linkage issues [i](#)

There are no chain breaks in this entry.

6 Fit of model and data [i](#)

6.1 Protein, DNA and RNA chains [i](#)

In the following table, the column labelled ‘#RSRZ> 2’ contains the number (and percentage) of RSRZ outliers, followed by percent RSRZ outliers for the chain as percentile scores relative to all X-ray entries and entries of similar resolution. The OWAB column contains the minimum, median, 95th percentile and maximum values of the occupancy-weighted average B-factor per residue. The column labelled ‘Q< 0.9’ lists the number of (and percentage) of residues with an average occupancy less than 0.9.

Mol	Chain	Analysed	<RSRZ>	#RSRZ>2	OWAB(Å ²)	Q<0.9
1	A	231/261 (88%)	-0.01	8 (3%) 44 49	15, 27, 44, 57	0
2	B	224/261 (85%)	0.26	14 (6%) 20 23	17, 33, 60, 70	0
3	D	9/13 (69%)	0.53	2 (22%) 0 0	24, 38, 65, 75	0
3	E	9/13 (69%)	2.47	5 (55%) 0 0	48, 66, 74, 81	0
All	All	473/548 (86%)	0.18	29 (6%) 21 25	15, 29, 59, 81	0

All (29) RSRZ outliers are listed below:

Mol	Chain	Res	Type	RSRZ
3	E	2	HIS	6.4
1	A	461	PHE	4.4
3	E	12	SER	3.9
2	B	417	CYS	3.9
3	D	2	HIS	3.8
2	B	459	TYR	3.6
3	E	11	ASP	3.6
2	B	307	ALA	3.6
2	B	308	LEU	3.4
2	B	337	PHE	3.2
1	A	460	THR	3.2
1	A	308	LEU	3.1
2	B	530	CYS	3.0
2	B	331	TYR	2.9
1	A	309	SER	2.9
3	D	12	SER	2.8
2	B	532	ASN	2.7
3	E	7	ARG	2.7
2	B	460	THR	2.5
1	A	452	ILE	2.4
1	A	448	LEU	2.3

Continued on next page...

Continued from previous page...

Mol	Chain	Res	Type	RSRZ
1	A	508	LEU	2.3
2	B	369	ASP	2.2
1	A	511	LEU	2.2
2	B	448	LEU	2.1
3	E	6	HIS	2.1
2	B	474	HIS	2.0
2	B	411	ASP	2.0
2	B	477	ARG	2.0

6.2 Non-standard residues in protein, DNA, RNA chains [i](#)

In the following table, the Atoms column lists the number of modelled atoms in the group and the number defined in the chemical component dictionary. The B-factors column lists the minimum, median, 95th percentile and maximum values of B factors of atoms in the group. The column labelled 'Q< 0.9' lists the number of atoms with occupancy less than 0.9.

Mol	Type	Chain	Res	Atoms	RSCC	RSR	B-factors(Å ²)	Q<0.9
3	MK8	E	4	9/10	0.87	0.19	51,53,58,60	0
3	66D	E	8	10/11	0.90	0.19	52,54,59,60	0
3	MK8	D	4	9/10	0.94	0.12	29,32,36,39	0
1	SCH	A	530	8/9	0.94	0.10	25,28,45,75	0
3	66D	D	8	10/11	0.97	0.08	28,28,31,33	0

6.3 Carbohydrates [i](#)

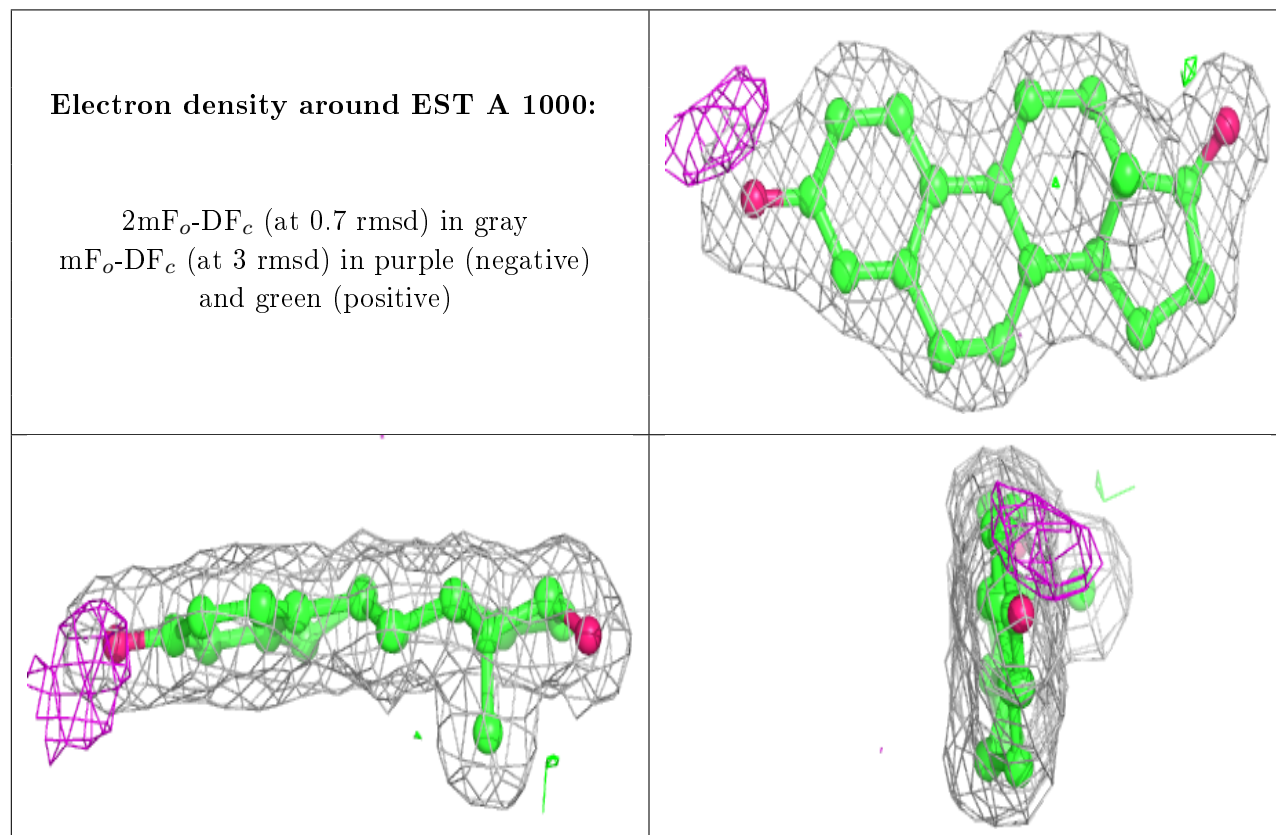
There are no carbohydrates in this entry.

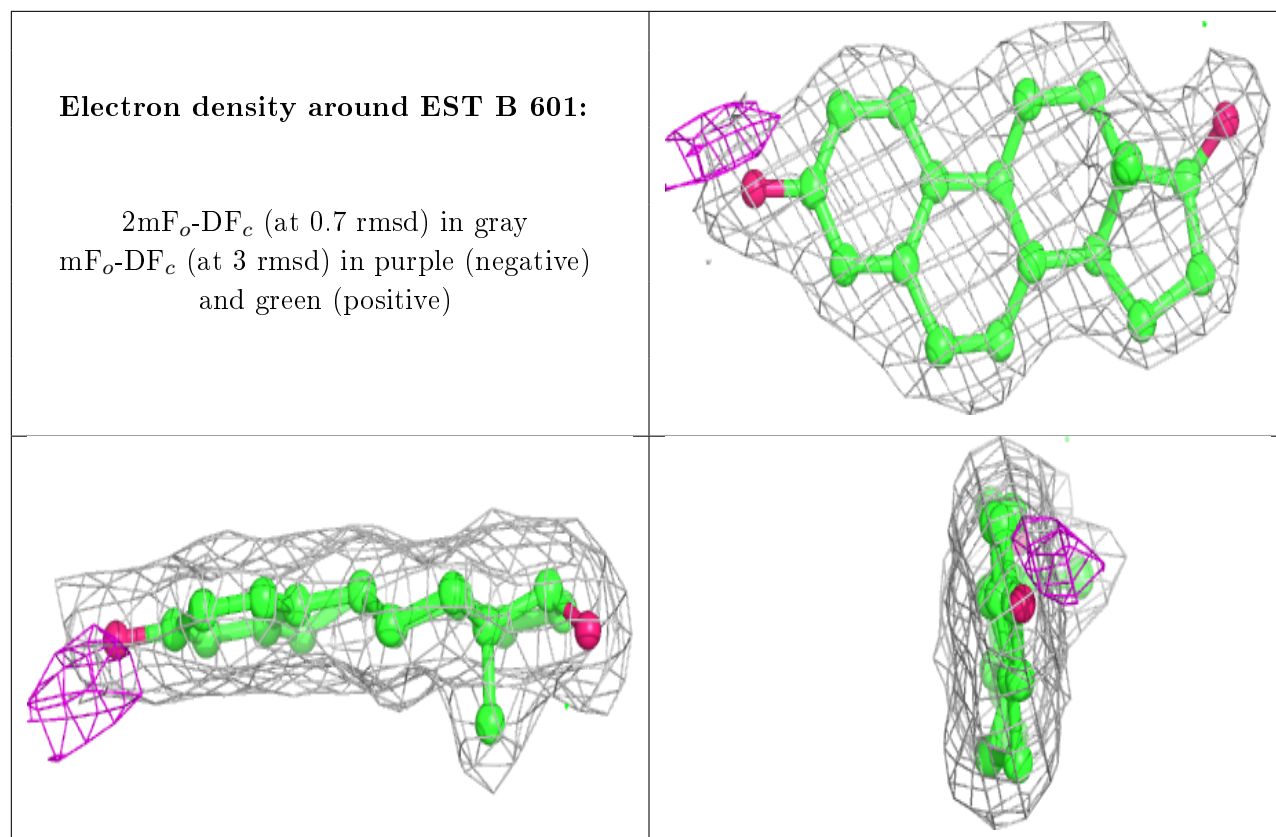
6.4 Ligands [i](#)

In the following table, the Atoms column lists the number of modelled atoms in the group and the number defined in the chemical component dictionary. The B-factors column lists the minimum, median, 95th percentile and maximum values of B factors of atoms in the group. The column labelled 'Q< 0.9' lists the number of atoms with occupancy less than 0.9.

Mol	Type	Chain	Res	Atoms	RSCC	RSR	B-factors(Å ²)	Q<0.9
5	GOL	B	602	6/6	0.46	0.31	52,63,64,65	0
5	GOL	B	603	6/6	0.78	0.35	44,53,55,55	0
4	EST	A	1000	20/20	0.95	0.10	15,18,22,29	0
4	EST	B	601	20/20	0.96	0.10	23,27,33,40	0
6	CL	B	604	1/1	0.99	0.10	27,27,27,27	0

The following is a graphical depiction of the model fit to experimental electron density of all instances of the Ligand of Interest. In addition, ligands with molecular weight > 250 and outliers as shown on the geometry validation Tables will also be included. Each fit is shown from different orientation to approximate a three-dimensional view.





6.5 Other polymers [i](#)

There are no such residues in this entry.