



# Full wwPDB X-ray Structure Validation Report ⓘ

Feb 11, 2024 – 05:21 PM EST

PDB ID : 3DT4  
Title : The structure of rat cytosolic PEPCK in complex with oxalate and GTP  
Authors : Sullivan, S.M.; Holyoak, T.  
Deposited on : 2008-07-14  
Resolution : 1.45 Å(reported)

This is a Full wwPDB X-ray Structure Validation Report for a publicly released PDB entry.

We welcome your comments at [validation@mail.wwpdb.org](mailto:validation@mail.wwpdb.org)

A user guide is available at

<https://www.wwpdb.org/validation/2017/XrayValidationReportHelp>

with specific help available everywhere you see the ⓘ symbol.

The types of validation reports are described at

<http://www.wwpdb.org/validation/2017/FAQs#types>.

---

The following versions of software and data (see [references ⓘ](#)) were used in the production of this report:

MolProbity : 4.02b-467  
Mogul : 1.8.5 (274361), CSD as541be (2020)  
Xtriage (Phenix) : 1.13  
EDS : 2.36  
buster-report : 1.1.7 (2018)  
Percentile statistics : 20191225.v01 (using entries in the PDB archive December 25th 2019)  
Refmac : 5.8.0158  
CCP4 : 7.0.044 (Gargrove)  
Ideal geometry (proteins) : Engh & Huber (2001)  
Ideal geometry (DNA, RNA) : Parkinson et al. (1996)  
Validation Pipeline (wwPDB-VP) : 2.36

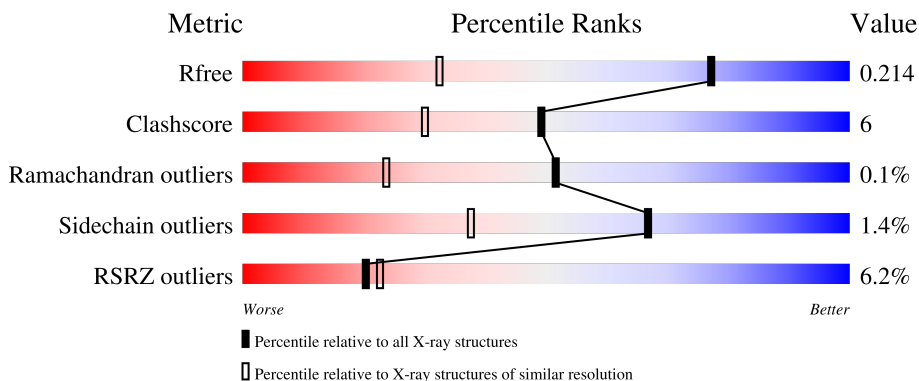
# 1 Overall quality at a glance

The following experimental techniques were used to determine the structure:

*X-RAY DIFFRACTION*

The reported resolution of this entry is 1.45 Å.

Percentile scores (ranging between 0-100) for global validation metrics of the entry are shown in the following graphic. The table shows the number of entries on which the scores are based.



Metric	Whole archive (#Entries)	Similar resolution (#Entries, resolution range(Å))
$R_{free}$	130704	1156 (1.46-1.46)
Clashscore	141614	1202 (1.46-1.46)
Ramachandran outliers	138981	1178 (1.46-1.46)
Sidechain outliers	138945	1178 (1.46-1.46)
RSRZ outliers	127900	1139 (1.46-1.46)

The table below summarises the geometric issues observed across the polymeric chains and their fit to the electron density. The red, orange, yellow and green segments of the lower bar indicate the fraction of residues that contain outliers for  $\geq 3$ , 2, 1 and 0 types of geometric quality criteria respectively. A grey segment represents the fraction of residues that are not modelled. The numeric value for each fraction is indicated below the corresponding segment, with a dot representing fractions  $\leq 5\%$ . The upper red bar (where present) indicates the fraction of residues that have poor fit to the electron density. The numeric value is given above the bar.

Mol	Chain	Length	Quality of chain
1	A	624	 6% 90% 8% ..
1	C	624	 7% 91% 8% ..

The following table lists non-polymeric compounds, carbohydrate monomers and non-standard residues in protein, DNA, RNA chains that are outliers for geometric or electron-density-fit criteria:

Mol	Type	Chain	Res	Chirality	Geometry	Clashes	Electron density
3	OXL	C	1000	-	X	-	-

## 2 Entry composition

There are 7 unique types of molecules in this entry. The entry contains 11485 atoms, of which 0 are hydrogens and 0 are deuteriums.

In the tables below, the ZeroOcc column contains the number of atoms modelled with zero occupancy, the AltConf column contains the number of residues with at least one atom in alternate conformation and the Trace column contains the number of residues modelled with at most 2 atoms.

- Molecule 1 is a protein called Phosphoenolpyruvate carboxykinase, cytosolic [GTP].

Mol	Chain	Residues	Atoms					ZeroOcc	AltConf	Trace
			Total	C	N	O	S			
1	A	619	4960	3179	847	903	31	0	16	0
1	C	620	4964	3177	850	903	34	0	16	0

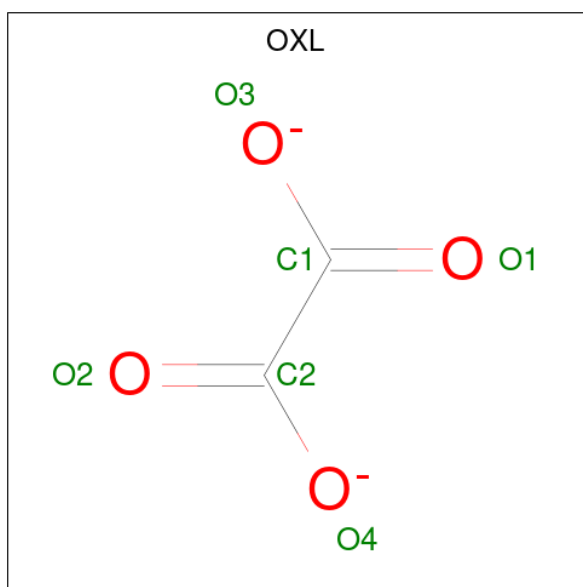
There are 4 discrepancies between the modelled and reference sequences:

Chain	Residue	Modelled	Actual	Comment	Reference
A	-1	GLY	-	expression tag	UNP P07379
A	0	SER	-	expression tag	UNP P07379
C	-1	GLY	-	expression tag	UNP P07379
C	0	SER	-	expression tag	UNP P07379

- Molecule 2 is MANGANESE (II) ION (three-letter code: MN) (formula: Mn).

Mol	Chain	Residues	Atoms		ZeroOcc	AltConf
2	A	2	Total	Mn	0	0
			2	2		
2	C	2	Total	Mn	0	0
			2	2		

- Molecule 3 is OXALATE ION (three-letter code: OXL) (formula: C<sub>2</sub>O<sub>4</sub>).



Mol	Chain	Residues	Atoms	ZeroOcc	AltConf
3	A	1	Total C O 6 2 4	0	0
3	C	1	Total C O 6 2 4	0	0

- Molecule 4 is SODIUM ION (three-letter code: NA) (formula: Na).

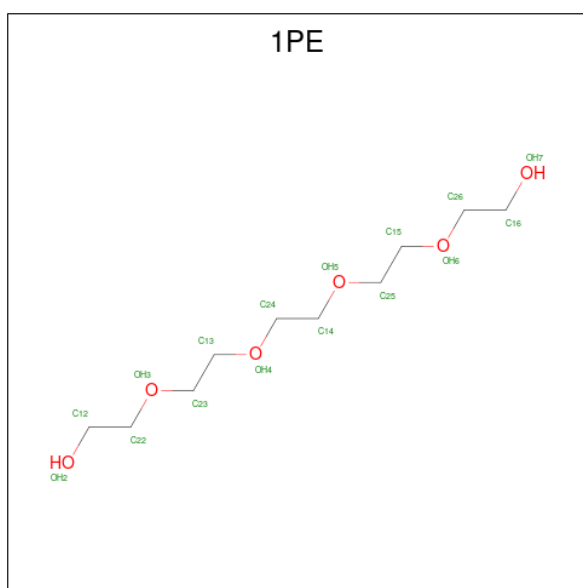
Mol	Chain	Residues	Atoms	ZeroOcc	AltConf
4	A	1	Total Na 1 1	0	0
4	C	1	Total Na 1 1	0	0

- Molecule 5 is GUANOSINE-5'-TRIPHOSPHATE (three-letter code: GTP) (formula: C<sub>10</sub>H<sub>16</sub>N<sub>5</sub>O<sub>14</sub>P<sub>3</sub>).



Mol	Chain	Residues	Atoms				ZeroOcc	AltConf	
5	A	1	Total	C	N	O	P	0	0
			32	10	5	14	3		
5	C	1	Total	C	N	O	P	0	0
			32	10	5	14	3		

- Molecule 6 is PENTAETHYLENE GLYCOL (three-letter code: 1PE) (formula:  $C_{10}H_{22}O_6$ ).



Mol	Chain	Residues	Atoms			ZeroOcc	AltConf
6	A	1	Total	C	O	0	0
			10	6	4		

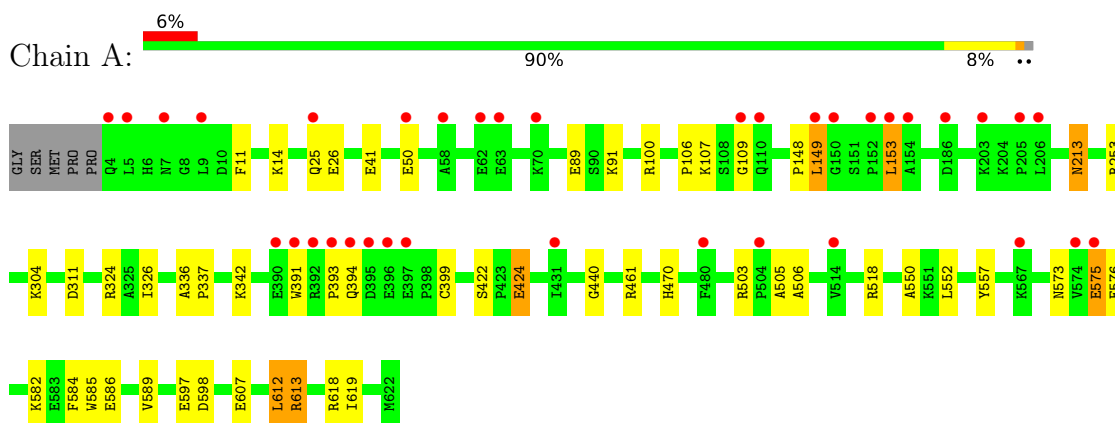
- Molecule 7 is water.

Mol	Chain	Residues	Atoms		ZeroOcc	AltConf
7	A	756	Total 756	O 756	0	0
7	C	713	Total 713	O 713	0	0

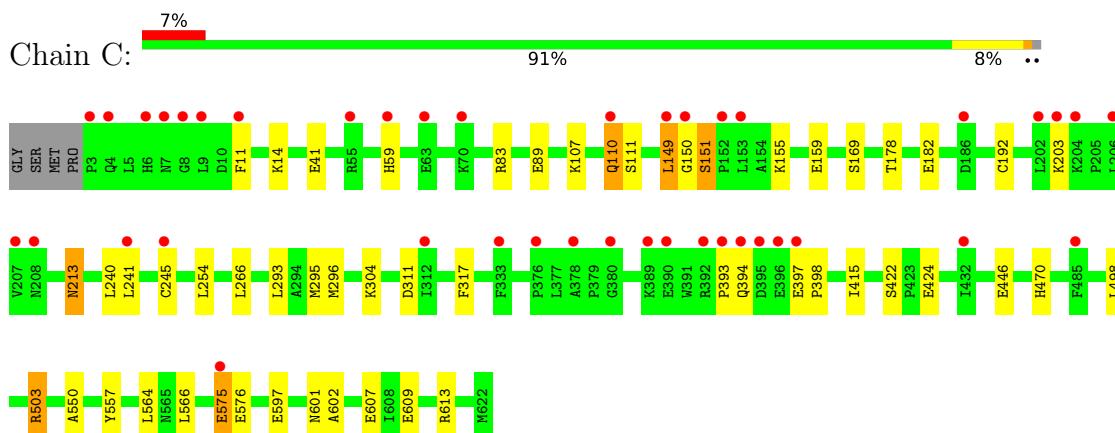
### 3 Residue-property plots [i](#)

These plots are drawn for all protein, RNA, DNA and oligosaccharide chains in the entry. The first graphic for a chain summarises the proportions of the various outlier classes displayed in the second graphic. The second graphic shows the sequence view annotated by issues in geometry and electron density. Residues are color-coded according to the number of geometric quality criteria for which they contain at least one outlier: green = 0, yellow = 1, orange = 2 and red = 3 or more. A red dot above a residue indicates a poor fit to the electron density ( $RSRZ > 2$ ). Stretches of 2 or more consecutive residues without any outlier are shown as a green connector. Residues present in the sample, but not in the model, are shown in grey.

- Molecule 1: Phosphoenolpyruvate carboxykinase, cytosolic [GTP]



- Molecule 1: Phosphoenolpyruvate carboxykinase, cytosolic [GTP]





## 4 Data and refinement statistics

Property	Value	Source
Space group	P 1 21 1	Depositor
Cell constants a, b, c, $\alpha$ , $\beta$ , $\gamma$	60.45Å 119.76Å 87.30Å 90.00° 96.70° 90.00°	Depositor
Resolution (Å)	30.02 – 1.45 30.02 – 1.45	Depositor EDS
% Data completeness (in resolution range)	99.8 (30.02-1.45) 99.7 (30.02-1.45)	Depositor EDS
$R_{merge}$	0.08	Depositor
$R_{sym}$	(Not available)	Depositor
$\langle I/\sigma(I) \rangle$ <sup>1</sup>	2.14 (at 1.45Å)	Xtrriage
Refinement program	REFMAC	Depositor
R, $R_{free}$	0.175 , 0.203 0.190 , 0.214	Depositor DCC
$R_{free}$ test set	10901 reflections (5.02%)	wwPDB-VP
Wilson B-factor (Å <sup>2</sup> )	14.7	Xtrriage
Anisotropy	0.215	Xtrriage
Bulk solvent $k_{sol}$ (e/Å <sup>3</sup> ), $B_{sol}$ (Å <sup>2</sup> )	0.38 , 45.7	EDS
L-test for twinning <sup>2</sup>	$\langle  L  \rangle = 0.49$ , $\langle L^2 \rangle = 0.32$	Xtrriage
Estimated twinning fraction	No twinning to report.	Xtrriage
$F_o, F_c$ correlation	0.97	EDS
Total number of atoms	11485	wwPDB-VP
Average B, all atoms (Å <sup>2</sup> )	11.0	wwPDB-VP

Xtrriage's analysis on translational NCS is as follows: *The analyses of the Patterson function reveals a significant off-origin peak that is 47.68 % of the origin peak, indicating pseudo-translational symmetry. The chance of finding a peak of this or larger height randomly in a structure without pseudo-translational symmetry is equal to 9.5893e-05. The detected translational NCS is most likely also responsible for the elevated intensity ratio.*

<sup>1</sup>Intensities estimated from amplitudes.

<sup>2</sup>Theoretical values of  $\langle |L| \rangle$ ,  $\langle L^2 \rangle$  for acentric reflections are 0.5, 0.333 respectively for untwinned datasets, and 0.375, 0.2 for perfectly twinned datasets.

## 5 Model quality [i](#)

### 5.1 Standard geometry [i](#)

Bond lengths and bond angles in the following residue types are not validated in this section: 1PE, OXL, GTP, NA, MN

The Z score for a bond length (or angle) is the number of standard deviations the observed value is removed from the expected value. A bond length (or angle) with  $|Z| > 5$  is considered an outlier worth inspection. RMSZ is the root-mean-square of all Z scores of the bond lengths (or angles).

Mol	Chain	Bond lengths		Bond angles	
		RMSZ	# Z  >5	RMSZ	# Z  >5
1	A	0.70	0/5134	0.78	5/6944 (0.1%)
1	C	0.70	0/5134	0.76	1/6951 (0.0%)
All	All	0.70	0/10268	0.77	6/13895 (0.0%)

There are no bond length outliers.

All (6) bond angle outliers are listed below:

Mol	Chain	Res	Type	Atoms	Z	Observed(°)	Ideal(°)
1	A	613	ARG	NE-CZ-NH1	7.70	124.15	120.30
1	A	612	LEU	CA-CB-CG	7.19	131.84	115.30
1	A	518	ARG	NE-CZ-NH2	-6.26	117.17	120.30
1	C	311	ASP	CB-CG-OD1	5.75	123.48	118.30
1	A	461	ARG	NE-CZ-NH2	-5.67	117.46	120.30
1	A	311	ASP	CB-CG-OD1	5.28	123.05	118.30

There are no chirality outliers.

There are no planarity outliers.

### 5.2 Too-close contacts [i](#)

In the following table, the Non-H and H(model) columns list the number of non-hydrogen atoms and hydrogen atoms in the chain respectively. The H(added) column lists the number of hydrogen atoms added and optimized by MolProbity. The Clashes column lists the number of clashes within the asymmetric unit, whereas Symm-Clashes lists symmetry-related clashes.

Mol	Chain	Non-H	H(model)	H(added)	Clashes	Symm-Clashes
1	A	4960	0	4955	52	0
1	C	4964	0	4936	65	1
2	A	2	0	0	0	0

*Continued on next page...*

Continued from previous page...

Mol	Chain	Non-H	H(model)	H(added)	Clashes	Symm-Clashes
2	C	2	0	0	0	0
3	A	6	0	0	0	0
3	C	6	0	0	0	0
4	A	1	0	0	0	0
4	C	1	0	0	0	0
5	A	32	0	12	0	0
5	C	32	0	12	0	0
6	A	10	0	13	5	0
7	A	756	0	0	24	1
7	C	713	0	0	18	1
All	All	11485	0	9928	118	2

The all-atom clashscore is defined as the number of clashes found per 1000 atoms (including hydrogen atoms). The all-atom clashscore for this structure is 6.

All (118) close contacts within the same asymmetric unit are listed below, sorted by their clash magnitude.

Atom-1	Atom-2	Interatomic distance (Å)	Clash overlap (Å)
1:C:149:LEU:CD1	1:C:150:GLY:HA2	1.52	1.36
1:C:149:LEU:CD1	1:C:150:GLY:CA	2.23	1.17
1:C:149:LEU:HD12	1:C:150:GLY:CA	1.76	1.15
1:C:149:LEU:HD13	1:C:150:GLY:HA2	1.09	1.04
1:C:601[A]:ASN:HD22	1:C:602:ALA:H	1.10	0.95
1:A:503:ARG:HD2	7:A:1777:HOH:O	1.75	0.86
1:C:11[B]:PHE:CE1	1:C:14:LYS:HD2	2.14	0.83
1:A:304:LYS:HE3	7:A:1611:HOH:O	1.79	0.82
1:C:293:LEU:HD12	1:C:296[A]:MET:CE	2.11	0.81
1:C:107:LYS:HE3	1:C:601[B]:ASN:OD1	1.80	0.80
1:C:498:LEU:HD13	1:C:607:GLU:CG	2.10	0.80
1:A:589[A]:VAL:HG11	1:A:619:ILE:HD12	1.66	0.78
1:C:241:LEU:HA	1:C:245[B]:CYS:SG	2.24	0.77
1:A:573:ASN:ND2	7:A:1847:HOH:O	2.18	0.76
1:C:155:LYS:HE2	7:C:2106:HOH:O	1.86	0.75
1:A:41[A]:GLU:OE2	7:A:1830:HOH:O	2.06	0.74
1:A:107:LYS:HE3	1:A:597[B]:GLU:HG3	1.68	0.74
1:C:609:GLU:OE1	1:C:613[B]:ARG:NH2	2.23	0.72
1:A:107:LYS:HE3	1:A:597[B]:GLU:CG	2.21	0.71
1:A:607[A]:GLU:OE1	7:A:1817:HOH:O	2.08	0.71
1:C:601[A]:ASN:ND2	1:C:602:ALA:H	1.84	0.70
1:C:149:LEU:HD12	1:C:150:GLY:HA3	1.74	0.69
1:A:153:LEU:HD11	6:A:1101:1PE:H232	1.74	0.69

Continued on next page...

*Continued from previous page...*

Atom-1	Atom-2	Interatomic distance (Å)	Clash overlap (Å)
1:C:149:LEU:HD12	1:C:150:GLY:N	2.10	0.67
1:C:498:LEU:HD13	1:C:607:GLU:HG2	1.77	0.67
1:C:613[B]:ARG:NH1	7:C:1706:HOH:O	2.29	0.66
1:A:89:GLU:OE2	1:A:470:HIS:HE1	1.79	0.65
1:C:110:GLN:CG	7:C:1832:HOH:O	2.45	0.64
1:A:607[A]:GLU:CD	7:A:1817:HOH:O	2.37	0.63
1:C:89:GLU:OE2	1:C:470:HIS:HE1	1.82	0.63
1:A:100:ARG:NH2	7:A:1233:HOH:O	2.30	0.62
1:C:293:LEU:HD12	1:C:296[A]:MET:HE2	1.80	0.62
1:C:498:LEU:HD13	1:C:607:GLU:HG3	1.82	0.61
1:C:151:SER:N	7:C:2086:HOH:O	2.33	0.60
1:A:304:LYS:CE	7:A:1611:HOH:O	2.42	0.60
1:C:613[B]:ARG:HD2	7:C:1706:HOH:O	2.02	0.60
1:C:41[B]:GLU:OE1	7:C:2055:HOH:O	2.17	0.60
1:C:470:HIS:HD2	7:C:2138:HOH:O	1.84	0.60
6:A:1101:1PE:H121	7:A:1636:HOH:O	2.01	0.59
1:C:150:GLY:O	1:C:151:SER:O	2.20	0.59
1:C:155:LYS:CE	7:C:2106:HOH:O	2.49	0.59
1:A:422:SER:OG	1:A:424:GLU:OE1	2.21	0.59
1:C:155:LYS:HE3	1:C:254:LEU:HD13	1.83	0.58
1:A:589[A]:VAL:HG11	1:A:619:ILE:CD1	2.33	0.58
1:A:14:LYS:HE3	7:A:1708:HOH:O	2.03	0.57
1:A:575:GLU:HG2	1:A:576:GLU:N	2.20	0.57
1:C:575:GLU:HG2	1:C:576:GLU:N	2.19	0.57
1:C:107:LYS:NZ	1:C:597:GLU:HG3	2.21	0.56
1:C:293:LEU:HD12	1:C:296[A]:MET:HE3	1.85	0.56
1:A:607[A]:GLU:OE2	7:A:1817:HOH:O	2.17	0.56
1:A:470:HIS:HD2	7:A:1619:HOH:O	1.88	0.55
1:A:613:ARG:HG3	7:A:1822:HOH:O	2.05	0.55
1:A:324[A]:ARG:NH2	7:A:1699:HOH:O	2.39	0.55
1:C:293:LEU:CD1	1:C:296[A]:MET:CE	2.83	0.54
1:C:422[B]:SER:OG	1:C:424:GLU:OE2	2.25	0.54
1:A:342[A]:LYS:HG3	7:A:1360:HOH:O	2.08	0.54
1:A:107:LYS:CE	1:A:597[B]:GLU:HG3	2.35	0.53
1:C:213:ASN:C	1:C:213:ASN:HD22	2.13	0.52
1:C:601[A]:ASN:ND2	7:C:1515:HOH:O	2.35	0.52
1:C:59[A]:HIS:HD2	7:C:1912:HOH:O	1.92	0.52
1:C:149:LEU:HD13	7:C:2190:HOH:O	2.08	0.51
1:C:422[B]:SER:OG	1:C:424:GLU:CD	2.48	0.51
1:C:304:LYS:HG3	7:C:1986:HOH:O	2.10	0.51
1:C:151:SER:CA	7:C:2086:HOH:O	2.59	0.50

*Continued on next page...*

*Continued from previous page...*

Atom-1	Atom-2	Interatomic distance (Å)	Clash overlap (Å)
1:A:153:LEU:HD11	6:A:1101:1PE:OH4	2.12	0.50
1:C:241:LEU:CA	1:C:245[B]:CYS:SG	2.98	0.49
1:C:397:GLU:HG3	1:C:398:PRO:HD2	1.93	0.49
1:C:597:GLU:O	1:C:601[A]:ASN:HB3	2.13	0.49
1:C:155:LYS:HE3	1:C:254:LEU:CD1	2.43	0.48
1:C:178:THR:O	1:C:182:GLU:HG3	2.13	0.48
1:A:424:GLU:HG2	7:A:1627:HOH:O	2.12	0.48
1:A:153:LEU:HD12	1:A:326:ILE:HD11	1.94	0.48
1:A:91[B]:LYS:HE2	7:C:1876:HOH:O	2.13	0.47
1:A:336:ALA:HB3	1:A:337:PRO:HD3	1.97	0.47
1:C:550:ALA:HB1	1:C:557:TYR:HB3	1.96	0.47
1:C:564[A]:LEU:HD23	1:C:566:LEU:HD21	1.97	0.46
1:C:14:LYS:HD3	1:C:41[A]:GLU:O	2.14	0.46
1:A:153:LEU:HD11	6:A:1101:1PE:C23	2.43	0.46
1:A:391:TRP:CH2	1:A:393:PRO:HA	2.51	0.46
1:C:11[B]:PHE:HE1	1:C:14:LYS:HD2	1.77	0.46
1:C:446:GLU:HB3	1:C:557:TYR:HB2	1.98	0.46
1:A:589[A]:VAL:CG1	1:A:619:ILE:CD1	2.95	0.45
1:A:11[B]:PHE:CE1	1:A:14:LYS:HD2	2.51	0.45
1:A:391:TRP:CD2	1:A:399:CYS:HB3	2.52	0.45
1:C:613[A]:ARG:HD2	7:C:1988:HOH:O	2.15	0.45
1:A:503:ARG:HB2	1:A:506:ALA:HB2	1.99	0.45
1:A:213:ASN:C	1:A:213:ASN:HD22	2.19	0.45
1:A:505:ALA:N	7:A:1754:HOH:O	2.45	0.45
1:C:266:LEU:C	1:C:266:LEU:HD12	2.38	0.44
1:A:149:LEU:HD23	7:A:1330:HOH:O	2.17	0.44
1:A:107:LYS:CE	1:A:597[B]:GLU:CG	2.92	0.44
1:A:25:GLN:NE2	1:A:26:GLU:OE1	2.51	0.44
1:C:110:GLN:HG3	7:C:1832:HOH:O	2.11	0.44
1:A:106:PRO:HG2	1:A:109:GLY:O	2.18	0.43
1:A:253:ARG:HD2	7:A:1361:HOH:O	2.18	0.43
1:A:14:LYS:NZ	7:A:1785:HOH:O	2.51	0.43
1:A:550:ALA:HB1	1:A:557:TYR:HB3	2.00	0.43
1:C:149:LEU:HD13	1:C:149:LEU:HA	1.12	0.42
1:C:151:SER:HA	7:C:2086:HOH:O	2.18	0.42
1:C:107:LYS:HZ2	1:C:597:GLU:HG3	1.84	0.42
1:A:100:ARG:CZ	7:A:1783:HOH:O	2.68	0.42
1:C:317:PHE:HB2	1:C:503:ARG:HG2	2.01	0.42
1:A:440:GLY:HA3	1:A:584:PHE:CZ	2.54	0.42
1:C:498:LEU:CD1	1:C:607:GLU:HG2	2.47	0.42
1:A:582:LYS:O	1:A:586:GLU:HG3	2.19	0.42

*Continued on next page...*

Continued from previous page...

Atom-1	Atom-2	Interatomic distance (Å)	Clash overlap (Å)
1:C:149:LEU:CD1	1:C:150:GLY:HA3	2.32	0.42
1:C:159:GLU:HA	1:C:192:CYS:HB2	2.02	0.42
1:C:110:GLN:HG3	1:C:111:SER:N	2.34	0.41
1:A:597[B]:GLU:HG2	1:A:598:ASP:N	2.34	0.41
1:A:618:ARG:HD2	7:A:1604:HOH:O	2.20	0.41
1:C:393:PRO:O	1:C:394:GLN:HB2	2.21	0.41
1:C:295:MET:HA	1:C:415:ILE:HD11	2.02	0.41
1:C:169:SER:HB2	1:C:240:LEU:HD21	2.03	0.41
1:A:585:TRP:O	1:A:589[A]:VAL:HG13	2.21	0.41
1:A:50:GLU:HG3	7:A:1697:HOH:O	2.21	0.40
1:A:148:PRO:HG2	7:A:1685:HOH:O	2.21	0.40
1:A:153:LEU:HD11	6:A:1101:1PE:C13	2.52	0.40
1:C:304:LYS:CG	7:C:1986:HOH:O	2.68	0.40

All (2) symmetry-related close contacts are listed below. The label for Atom-2 includes the symmetry operator and encoded unit-cell translations to be applied.

Atom-1	Atom-2	Interatomic distance (Å)	Clash overlap (Å)
1:C:83[B]:ARG:NH2	7:A:1702:HOH:O[1_556]	1.94	0.26
7:C:1817:HOH:O	7:C:1818:HOH:O[2_647]	2.08	0.12

## 5.3 Torsion angles [i](#)

### 5.3.1 Protein backbone [i](#)

In the following table, the Percentiles column shows the percent Ramachandran outliers of the chain as a percentile score with respect to all X-ray entries followed by that with respect to entries of similar resolution.

The Analysed column shows the number of residues for which the backbone conformation was analysed, and the total number of residues.

Mol	Chain	Analysed	Favoured	Allowed	Outliers	Percentiles	
1	A	633/624 (101%)	615 (97%)	18 (3%)	0	100	100
1	C	634/624 (102%)	612 (96%)	21 (3%)	1 (0%)	47	22
All	All	1267/1248 (102%)	1227 (97%)	39 (3%)	1 (0%)	51	24

All (1) Ramachandran outliers are listed below:

Mol	Chain	Res	Type
1	C	151	SER

### 5.3.2 Protein sidechains [i](#)

In the following table, the Percentiles column shows the percent sidechain outliers of the chain as a percentile score with respect to all X-ray entries followed by that with respect to entries of similar resolution.

The Analysed column shows the number of residues for which the sidechain conformation was analysed, and the total number of residues.

Mol	Chain	Analysed	Rotameric	Outliers	Percentiles	
1	A	532/520 (102%)	524 (98%)	8 (2%)	65	35
1	C	533/520 (102%)	527 (99%)	6 (1%)	73	48
All	All	1065/1040 (102%)	1051 (99%)	14 (1%)	67	40

All (14) residues with a non-rotameric sidechain are listed below:

Mol	Chain	Res	Type
1	A	149	LEU
1	A	153	LEU
1	A	213	ASN
1	A	394	GLN
1	A	424	GLU
1	A	552	LEU
1	A	575	GLU
1	A	612	LEU
1	C	110	GLN
1	C	149	LEU
1	C	203	LYS
1	C	213	ASN
1	C	503	ARG
1	C	575	GLU

Sometimes sidechains can be flipped to improve hydrogen bonding and reduce clashes. All (16) such sidechains are listed below:

Mol	Chain	Res	Type
1	A	25	GLN
1	A	59	HIS
1	A	110	GLN
1	A	208	ASN

*Continued on next page...*

*Continued from previous page...*

Mol	Chain	Res	Type
1	A	213	ASN
1	A	320	GLN
1	A	470	HIS
1	A	515	ASN
1	C	4	GLN
1	C	7	ASN
1	C	17	GLN
1	C	213	ASN
1	C	320	GLN
1	C	470	HIS
1	C	515	ASN
1	C	621	GLN

### 5.3.3 RNA [i](#)

There are no RNA molecules in this entry.

## 5.4 Non-standard residues in protein, DNA, RNA chains [i](#)

There are no non-standard protein/DNA/RNA residues in this entry.

## 5.5 Carbohydrates [i](#)

There are no monosaccharides in this entry.

## 5.6 Ligand geometry [i](#)

Of 11 ligands modelled in this entry, 6 are monoatomic - leaving 5 for Mogul analysis.

In the following table, the Counts columns list the number of bonds (or angles) for which Mogul statistics could be retrieved, the number of bonds (or angles) that are observed in the model and the number of bonds (or angles) that are defined in the Chemical Component Dictionary. The Link column lists molecule types, if any, to which the group is linked. The Z score for a bond length (or angle) is the number of standard deviations the observed value is removed from the expected value. A bond length (or angle) with  $|Z| > 2$  is considered an outlier worth inspection. RMSZ is the root-mean-square of all Z scores of the bond lengths (or angles).

Mol	Type	Chain	Res	Link	Bond lengths			Bond angles		
					Counts	RMSZ	$\# Z  > 2$	Counts	RMSZ	$\# Z  > 2$
3	OXL	A	1000	2	5,5,5	3.14	2 (40%)	6,6,6	1.58	2 (33%)
6	1PE	A	1101	-	9,9,15	0.66	0	8,8,14	0.50	0



Mol	Type	Chain	Res	Link	Bond lengths			Bond angles		
					Counts	RMSZ	# Z  > 2	Counts	RMSZ	# Z  > 2
3	OXL	C	1000	2	5,5,5	3.49	2 (40%)	6,6,6	1.66	3 (50%)
5	GTP	C	900	2	26,34,34	1.03	1 (3%)	32,54,54	0.99	1 (3%)
5	GTP	A	900	2	26,34,34	0.98	1 (3%)	32,54,54	1.28	4 (12%)

In the following table, the Chirals column lists the number of chiral outliers, the number of chiral centers analysed, the number of these observed in the model and the number defined in the Chemical Component Dictionary. Similar counts are reported in the Torsion and Rings columns. '-' means no outliers of that kind were identified.

Mol	Type	Chain	Res	Link	Chirals	Torsions	Rings
3	OXL	A	1000	2	-	1/4/4/4	-
6	1PE	A	1101	-	-	3/7/7/13	-
3	OXL	C	1000	2	-	1/4/4/4	-
5	GTP	C	900	2	-	2/18/38/38	0/3/3/3
5	GTP	A	900	2	-	2/18/38/38	0/3/3/3

All (6) bond length outliers are listed below:

Mol	Chain	Res	Type	Atoms	Z	Observed(Å)	Ideal(Å)
3	C	1000	OXL	C2-C1	-7.09	1.34	1.54
3	A	1000	OXL	C2-C1	-6.28	1.36	1.54
5	A	900	GTP	C5-C6	-3.47	1.40	1.47
5	C	900	GTP	C5-C6	-2.54	1.42	1.47
3	A	1000	OXL	O2-C2	2.41	1.29	1.22
3	C	1000	OXL	O1-C1	2.40	1.29	1.22

All (10) bond angle outliers are listed below:

Mol	Chain	Res	Type	Atoms	Z	Observed(°)	Ideal(°)
5	A	900	GTP	C8-N7-C5	3.24	109.16	102.99
3	A	1000	OXL	O3-C1-O1	-2.57	117.72	123.61
5	A	900	GTP	C2-N1-C6	-2.54	120.41	125.10
5	C	900	GTP	C8-N7-C5	2.48	107.72	102.99
3	A	1000	OXL	O3-C1-C2	2.45	120.43	113.16
5	A	900	GTP	C5-C6-N1	2.28	117.98	113.95
3	C	1000	OXL	O3-C1-C2	2.18	119.62	113.16
3	C	1000	OXL	O3-C1-O1	-2.16	118.66	123.61
5	A	900	GTP	O6-C6-N1	-2.06	118.22	120.65
3	C	1000	OXL	O4-C2-O2	-2.05	118.93	123.61

There are no chirality outliers.

All (9) torsion outliers are listed below:

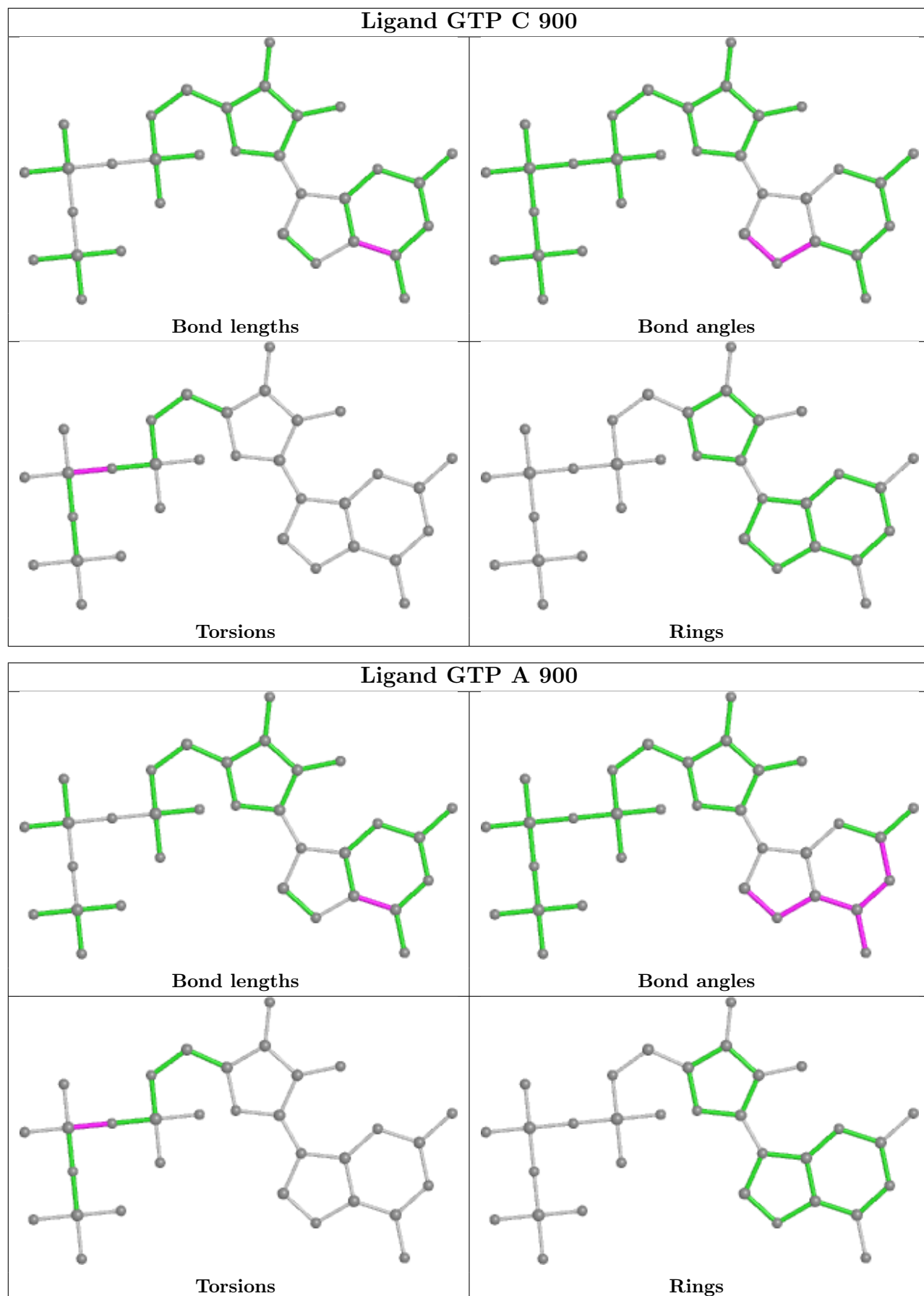
Mol	Chain	Res	Type	Atoms
6	A	1101	1PE	C23-C13-OH4-C24
6	A	1101	1PE	C12-C22-OH3-C23
5	C	900	GTP	PA-O3A-PB-O2B
5	A	900	GTP	PA-O3A-PB-O2B
5	A	900	GTP	PA-O3A-PB-O1B
5	C	900	GTP	PA-O3A-PB-O1B
3	A	1000	OXL	O3-C1-C2-O4
3	C	1000	OXL	O3-C1-C2-O4
6	A	1101	1PE	OH4-C13-C23-OH3

There are no ring outliers.

1 monomer is involved in 5 short contacts:

Mol	Chain	Res	Type	Clashes	Symm-Clashes
6	A	1101	1PE	5	0

The following is a two-dimensional graphical depiction of Mogul quality analysis of bond lengths, bond angles, torsion angles, and ring geometry for all instances of the Ligand of Interest. In addition, ligands with molecular weight > 250 and outliers as shown on the validation Tables will also be included. For torsion angles, if less than 5% of the Mogul distribution of torsion angles is within 10 degrees of the torsion angle in question, then that torsion angle is considered an outlier. Any bond that is central to one or more torsion angles identified as an outlier by Mogul will be highlighted in the graph. For rings, the root-mean-square deviation (RMSD) between the ring in question and similar rings identified by Mogul is calculated over all ring torsion angles. If the average RMSD is greater than 60 degrees and the minimal RMSD between the ring in question and any Mogul-identified rings is also greater than 60 degrees, then that ring is considered an outlier. The outliers are highlighted in purple. The color gray indicates Mogul did not find sufficient equivalents in the CSD to analyse the geometry.



## 5.7 Other polymers [i](#)

There are no such residues in this entry.

## 5.8 Polymer linkage issues [i](#)

There are no chain breaks in this entry.

## 6 Fit of model and data [i](#)

### 6.1 Protein, DNA and RNA chains [i](#)

In the following table, the column labelled ‘#RSRZ > 2’ contains the number (and percentage) of RSRZ outliers, followed by percent RSRZ outliers for the chain as percentile scores relative to all X-ray entries and entries of similar resolution. The OWAB column contains the minimum, median, 95<sup>th</sup> percentile and maximum values of the occupancy-weighted average B-factor per residue. The column labelled ‘Q < 0.9’ lists the number of (and percentage) of residues with an average occupancy less than 0.9.

Mol	Chain	Analysed	<RSRZ>	#RSRZ>2	OWAB(Å <sup>2</sup> )	Q<0.9
1	A	619/624 (99%)	0.35	36 (5%) 23 25	4, 8, 21, 32	0
1	C	620/624 (99%)	0.33	41 (6%) 18 20	4, 8, 21, 36	0
All	All	1239/1248 (99%)	0.34	77 (6%) 20 22	4, 8, 21, 36	0

All (77) RSRZ outliers are listed below:

Mol	Chain	Res	Type	RSRZ
1	C	394	GLN	8.9
1	C	149	LEU	7.2
1	A	394	GLN	6.7
1	A	149	LEU	6.6
1	C	3	PRO	6.5
1	A	9	LEU	5.5
1	C	9	LEU	4.9
1	A	153	LEU	4.9
1	C	393	PRO	4.8
1	A	152	PRO	4.6
1	A	393	PRO	4.6
1	A	396	GLU	4.5
1	C	392	ARG	4.1
1	A	395	ASP	4.1
1	C	396	GLU	4.1
1	C	395	ASP	4.1
1	A	4	GLN	4.0
1	A	392	ARG	4.0
1	A	62	GLU	3.7
1	C	150	GLY	3.6
1	A	504	PRO	3.4
1	A	7	ASN	3.4
1	C	152	PRO	3.4
1	A	150	GLY	3.3

*Continued on next page...*

*Continued from previous page...*

Mol	Chain	Res	Type	RSRZ
1	C	7	ASN	3.3
1	C	63	GLU	3.3
1	C	70	LYS	3.2
1	C	390	GLU	3.2
1	A	205	PRO	3.1
1	C	397	GLU	3.1
1	C	207	VAL	3.1
1	A	110	GLN	3.0
1	C	204	LYS	2.9
1	A	397	GLU	2.9
1	A	5	LEU	2.9
1	C	4	GLN	2.9
1	A	390	GLU	2.8
1	C	203	LYS	2.8
1	A	574	VAL	2.7
1	C	333	PHE	2.7
1	A	567	LYS	2.7
1	A	109	GLY	2.7
1	C	208	ASN	2.6
1	A	154	ALA	2.6
1	A	203	LYS	2.6
1	A	58	ALA	2.5
1	C	110	GLN	2.5
1	C	186	ASP	2.5
1	C	55	ARG	2.5
1	A	206	LEU	2.4
1	C	245[A]	CYS	2.4
1	C	312	ILE	2.4
1	A	186	ASP	2.4
1	A	480	PHE	2.4
1	C	432	ILE	2.4
1	A	50	GLU	2.3
1	A	25	GLN	2.3
1	A	63	GLU	2.3
1	C	575	GLU	2.3
1	C	389	LYS	2.3
1	C	378	ALA	2.3
1	C	59[A]	HIS	2.3
1	C	206	LEU	2.3
1	C	11[A]	PHE	2.2
1	C	241	LEU	2.2
1	A	514	VAL	2.2

*Continued on next page...*

*Continued from previous page...*

Mol	Chain	Res	Type	RSRZ
1	C	8	GLY	2.2
1	A	391	TRP	2.2
1	C	485	PHE	2.1
1	C	376	PRO	2.1
1	C	202	LEU	2.1
1	C	153	LEU	2.1
1	C	6	HIS	2.1
1	C	380	GLY	2.1
1	A	575	GLU	2.0
1	A	70	LYS	2.0
1	A	431	ILE	2.0

## 6.2 Non-standard residues in protein, DNA, RNA chains [i](#)

There are no non-standard protein/DNA/RNA residues in this entry.

## 6.3 Carbohydrates [i](#)

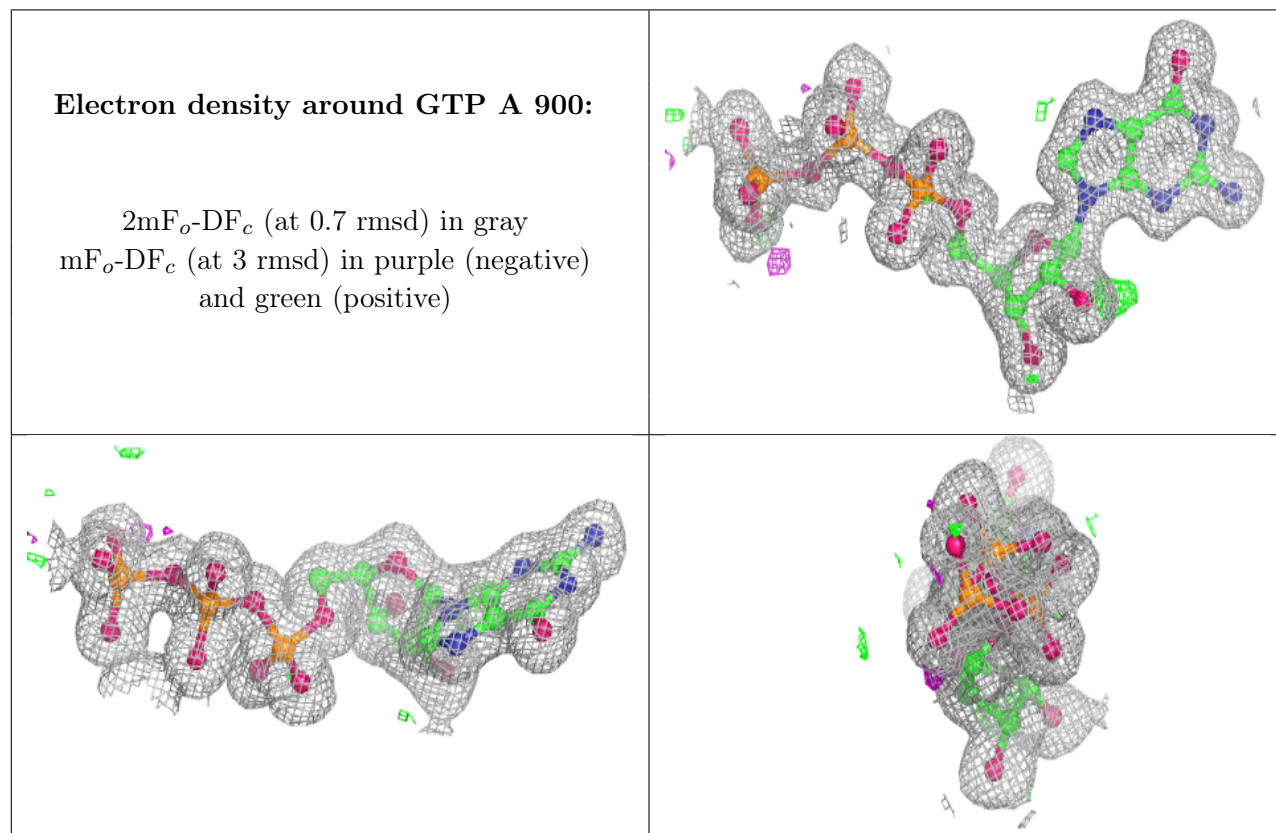
There are no monosaccharides in this entry.

## 6.4 Ligands [i](#)

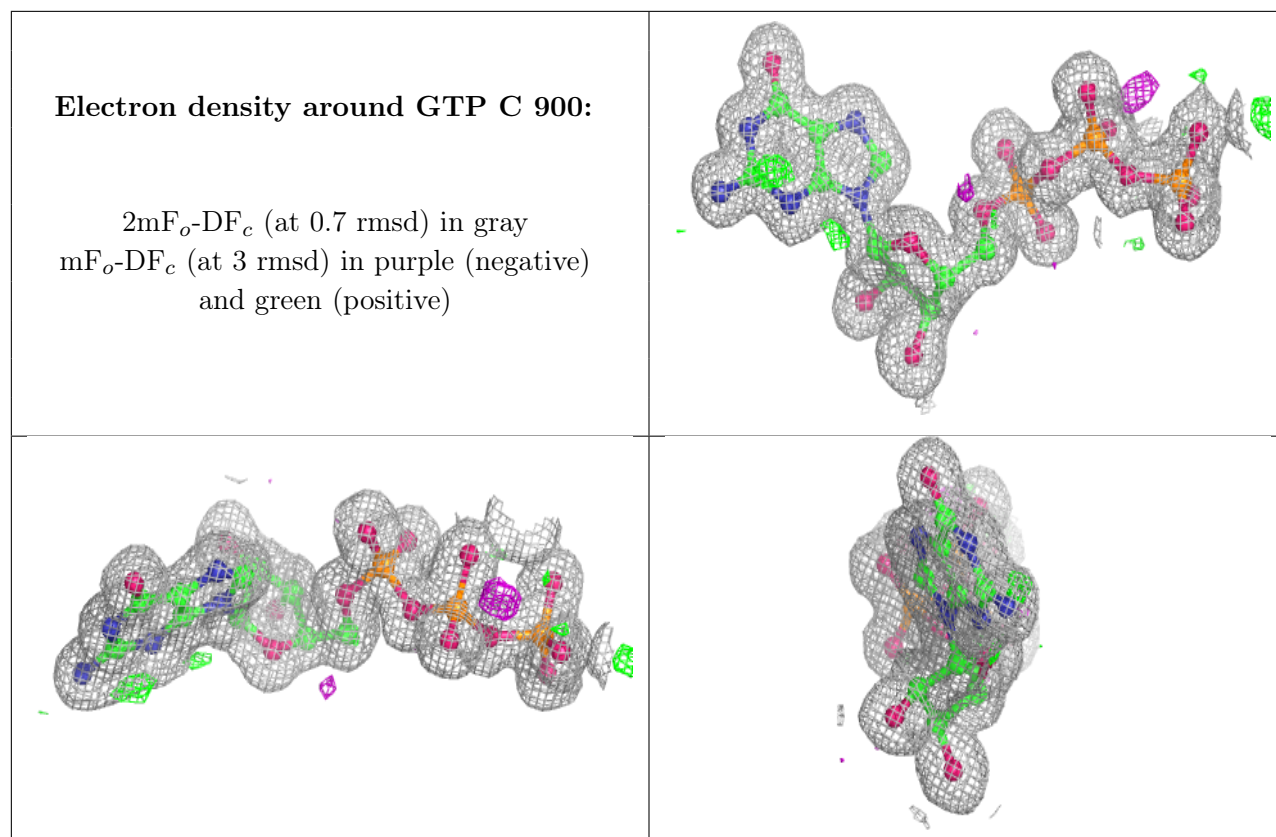
In the following table, the Atoms column lists the number of modelled atoms in the group and the number defined in the chemical component dictionary. The B-factors column lists the minimum, median, 95<sup>th</sup> percentile and maximum values of B factors of atoms in the group. The column labelled 'Q<0.9' lists the number of atoms with occupancy less than 0.9.

Mol	Type	Chain	Res	Atoms	RSCC	RSR	B-factors(Å <sup>2</sup> )	Q<0.9
6	1PE	A	1101	10/16	0.81	0.15	16,19,23,27	0
4	NA	C	1100	1/1	0.88	0.09	18,18,18,18	0
3	OXL	A	1000	6/6	0.95	0.12	7,9,11,12	0
3	OXL	C	1000	6/6	0.97	0.13	6,6,10,10	0
5	GTP	A	900	32/32	0.98	0.08	4,6,8,9	0
5	GTP	C	900	32/32	0.98	0.08	4,5,7,8	0
4	NA	A	1100	1/1	0.98	0.10	12,12,12,12	0
2	MN	C	800	1/1	1.00	0.06	6,6,6,6	0
2	MN	A	700	1/1	1.00	0.09	5,5,5,5	0
2	MN	A	800	1/1	1.00	0.06	6,6,6,6	0
2	MN	C	700	1/1	1.00	0.11	5,5,5,5	0

The following is a graphical depiction of the model fit to experimental electron density of all instances of the Ligand of Interest. In addition, ligands with molecular weight > 250 and outliers as shown on the geometry validation Tables will also be included. Each fit is shown from different orientation to approximate a three-dimensional view.







## 6.5 Other polymers [i](#)

There are no such residues in this entry.