



Full wwPDB X-ray Structure Validation Report ⓘ

Sep 6, 2023 – 05:16 AM EDT

PDB ID : 4DPM
Title : Structure of malonyl-coenzyme A reductase from crenarchaeota in complex with CoA
Authors : Demmer, U.; Warkentin, E.; Srivastava, A.; Kockelkorn, D.; Fuchs, G.; Ermler, U.
Deposited on : 2012-02-13
Resolution : 2.30 Å(reported)

This is a Full wwPDB X-ray Structure Validation Report for a publicly released PDB entry.

We welcome your comments at validation@mail.wwpdb.org

A user guide is available at

<https://www.wwpdb.org/validation/2017/XrayValidationReportHelp>

with specific help available everywhere you see the ⓘ symbol.

The types of validation reports are described at

<http://www.wwpdb.org/validation/2017/FAQs#types>.

The following versions of software and data (see [references ⓘ](#)) were used in the production of this report:

MolProbity : 4.02b-467
Mogul : 1.8.5 (274361), CSD as541be (2020)
Xtrriage (Phenix) : 1.13
EDS : 2.35
buster-report : 1.1.7 (2018)
Percentile statistics : 20191225.v01 (using entries in the PDB archive December 25th 2019)
Refmac : 5.8.0158
CCP4 : 7.0.044 (Gargrove)
Ideal geometry (proteins) : Engh & Huber (2001)
Ideal geometry (DNA, RNA) : Parkinson et al. (1996)
Validation Pipeline (wwPDB-VP) : 2.35

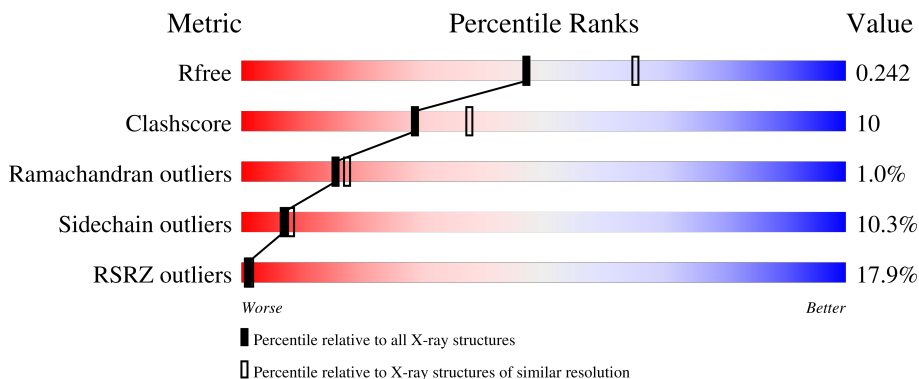
1 Overall quality at a glance

The following experimental techniques were used to determine the structure:

X-RAY DIFFRACTION

The reported resolution of this entry is 2.30 Å.

Percentile scores (ranging between 0-100) for global validation metrics of the entry are shown in the following graphic. The table shows the number of entries on which the scores are based.



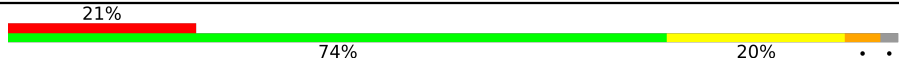

Metric	Whole archive (#Entries)	Similar resolution (#Entries, resolution range(Å))
R_{free}	130704	5042 (2.30-2.30)
Clashscore	141614	5643 (2.30-2.30)
Ramachandran outliers	138981	5575 (2.30-2.30)
Sidechain outliers	138945	5575 (2.30-2.30)
RSRZ outliers	127900	4938 (2.30-2.30)

The table below summarises the geometric issues observed across the polymeric chains and their fit to the electron density. The red, orange, yellow and green segments of the lower bar indicate the fraction of residues that contain outliers for ≥ 3 , 2, 1 and 0 types of geometric quality criteria respectively. A grey segment represents the fraction of residues that are not modelled. The numeric value for each fraction is indicated below the corresponding segment, with a dot representing fractions $\leq 5\%$. The upper red bar (where present) indicates the fraction of residues that have poor fit to the electron density. The numeric value is given above the bar.

Mol	Chain	Length	Quality of chain
1	A	359	 56% 35% 7% ..
1	B	359	 61% 31% 5% ..
1	C	359	 17% 72% 23% ..
1	D	359	 37% 73% 22% ..

Continued on next page...

Continued from previous page...

Mol	Chain	Length	Quality of chain
1	E	359	
1	F	359	

2 Entry composition [i](#)

There are 4 unique types of molecules in this entry. The entry contains 17284 atoms, of which 0 are hydrogens and 0 are deuteriums.

In the tables below, the ZeroOcc column contains the number of atoms modelled with zero occupancy, the AltConf column contains the number of residues with at least one atom in alternate conformation and the Trace column contains the number of residues modelled with at most 2 atoms.

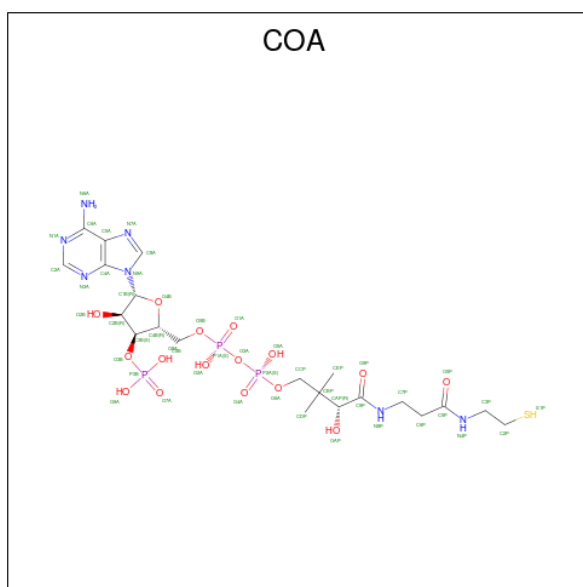
- Molecule 1 is a protein called Malonyl-CoA/succinyl-CoA reductase.

Mol	Chain	Residues	Atoms					ZeroOcc	AltConf	Trace
			Total	C	N	O	S			
1	A	354	2743	1759	466	510	8	0	0	0
1	B	354	2743	1759	466	510	8	0	0	0
1	C	354	2743	1759	466	510	8	0	0	0
1	D	354	2743	1759	466	510	8	0	0	0
1	E	353	2732	1753	462	509	8	0	0	0
1	F	353	2732	1753	462	509	8	0	0	0

- Molecule 2 is MAGNESIUM ION (three-letter code: MG) (formula: Mg).

Mol	Chain	Residues	Atoms		ZeroOcc	AltConf
2	A	1	Total 1	Mg 1	0	0
2	B	1	Total 1	Mg 1	0	0
2	C	1	Total 1	Mg 1	0	0
2	D	1	Total 1	Mg 1	0	0
2	E	1	Total 1	Mg 1	0	0
2	F	1	Total 1	Mg 1	0	0

- Molecule 3 is COENZYME A (three-letter code: COA) (formula: C₂₁H₃₆N₇O₁₆P₃S).



Mol	Chain	Residues	Atoms					ZeroOcc	AltConf	
			Total	C	N	O	P			S
3	A	1	48	21	7	16	3	1	0	0
3	B	1	48	21	7	16	3	1	0	0
3	C	1	48	21	7	16	3	1	0	0
3	D	1	48	21	7	16	3	1	0	0
3	E	1	48	21	7	16	3	1	0	0
3	F	1	48	21	7	16	3	1	0	0

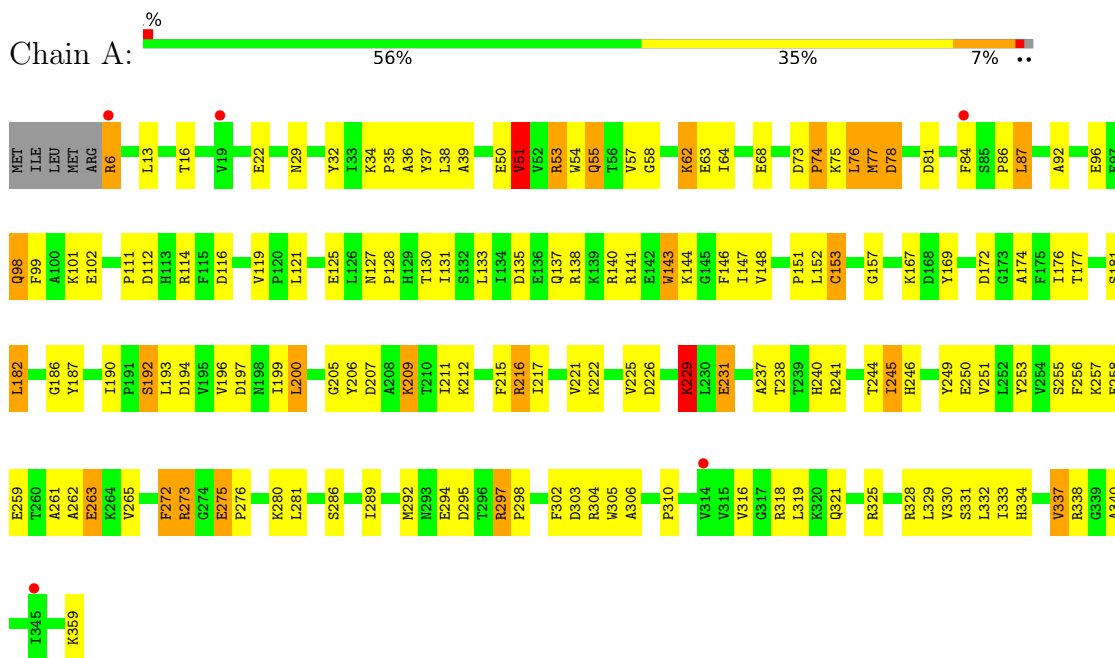
- Molecule 4 is water.

Mol	Chain	Residues	Atoms		ZeroOcc	AltConf
4	A	184	Total 184	O 184	0	0
4	B	172	Total 172	O 172	0	0
4	C	59	Total 59	O 59	0	0
4	D	57	Total 57	O 57	0	0
4	E	52	Total 52	O 52	0	0
4	F	30	Total 30	O 30	0	0

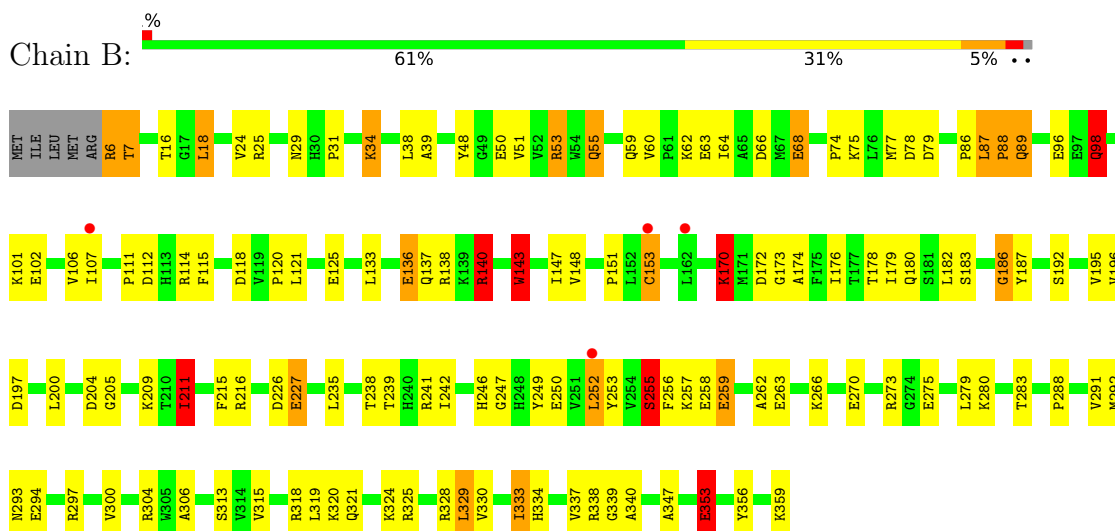
3 Residue-property plots

These plots are drawn for all protein, RNA, DNA and oligosaccharide chains in the entry. The first graphic for a chain summarises the proportions of the various outlier classes displayed in the second graphic. The second graphic shows the sequence view annotated by issues in geometry and electron density. Residues are color-coded according to the number of geometric quality criteria for which they contain at least one outlier: green = 0, yellow = 1, orange = 2 and red = 3 or more. A red dot above a residue indicates a poor fit to the electron density ($RSRZ > 2$). Stretches of 2 or more consecutive residues without any outlier are shown as a green connector. Residues present in the sample, but not in the model, are shown in grey.

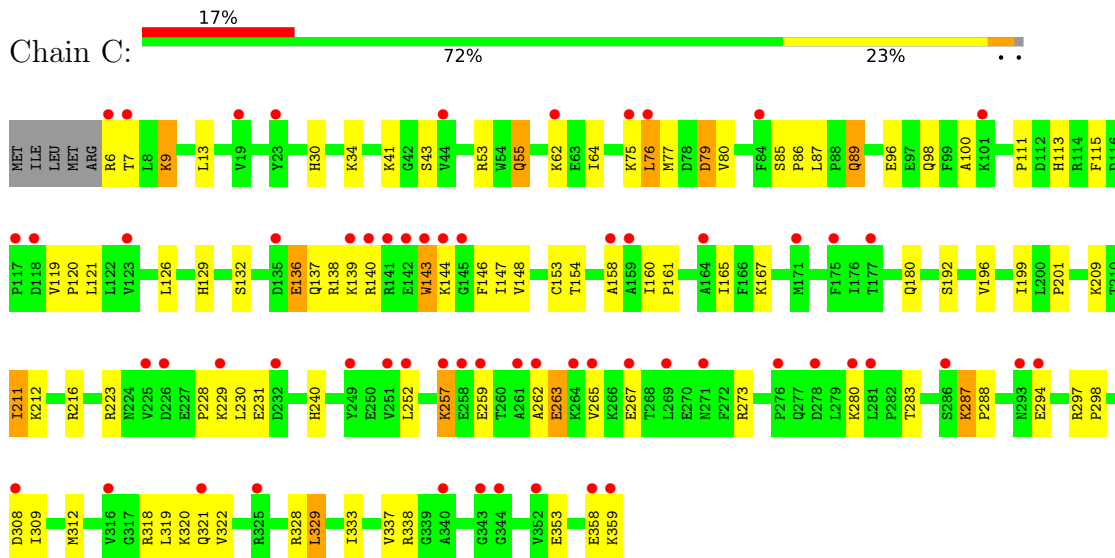
- Molecule 1: Malonyl-CoA/succinyl-CoA reductase



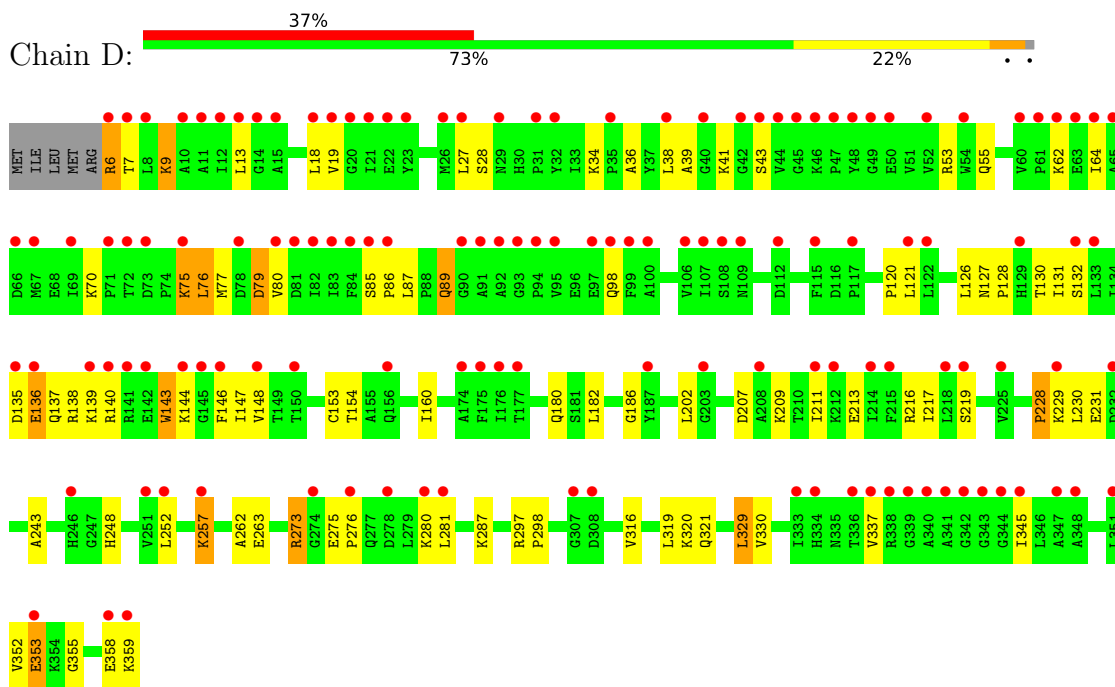
- Molecule 1: Malonyl-CoA/succinyl-CoA reductase



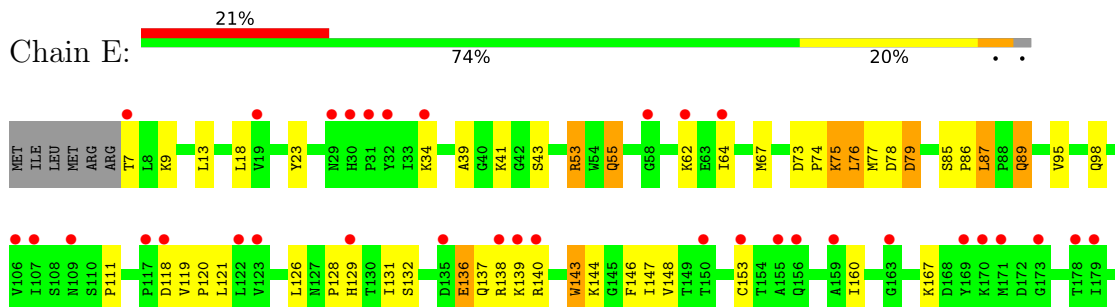
- Molecule 1: Malonyl-CoA/succinyl-CoA reductase

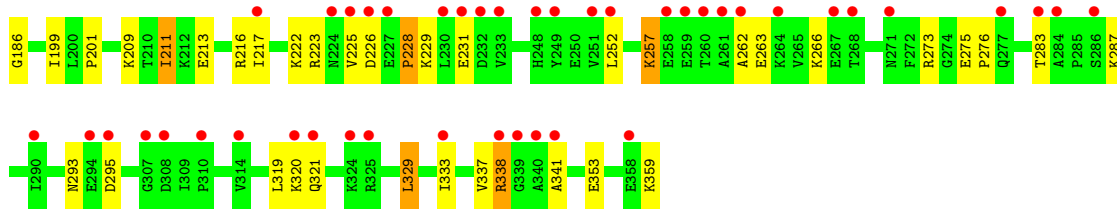


- Molecule 1: Malonyl-CoA/succinyl-CoA reductase

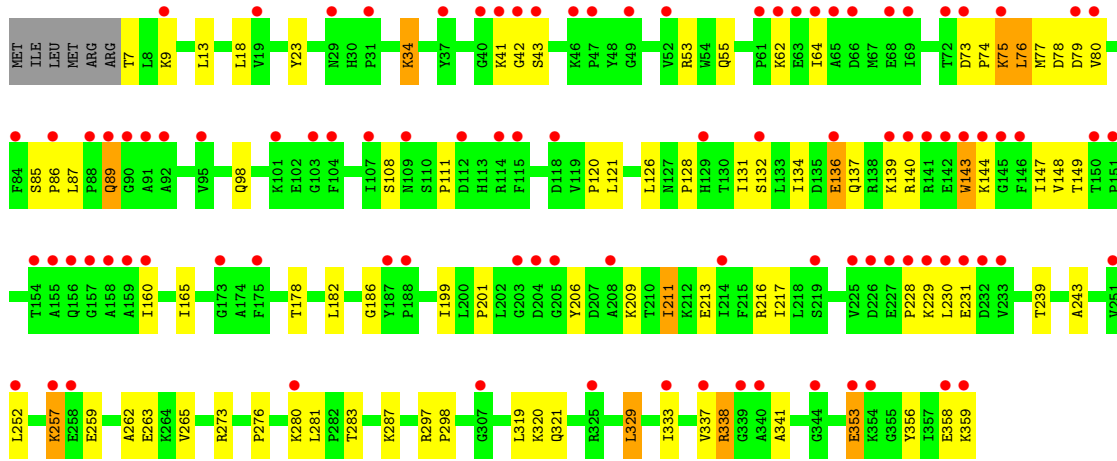
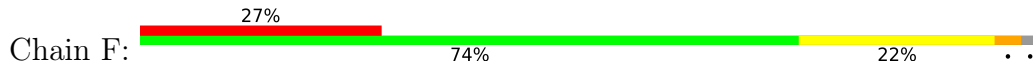


- Molecule 1: Malonyl-CoA/succinyl-CoA reductase





● Molecule 1: Malonyl-CoA/succinyl-CoA reductase



4 Data and refinement statistics

Property	Value	Source
Space group	C 2 2 21	Depositor
Cell constants a, b, c, α , β , γ	111.63Å 137.62Å 362.01Å 90.00° 90.00° 90.00°	Depositor
Resolution (Å)	30.00 – 2.30 29.89 – 2.30	Depositor EDS
% Data completeness (in resolution range)	87.9 (30.00-2.30) 87.9 (29.89-2.30)	Depositor EDS
R_{merge}	(Not available)	Depositor
R_{sym}	0.07	Depositor
$\langle I/\sigma(I) \rangle$ ¹	2.31 (at 2.31Å)	Xtrriage
Refinement program	REFMAC 5.6.0095	Depositor
R, R_{free}	0.198 , 0.247 0.195 , 0.242	Depositor DCC
R_{free} test set	5495 reflections (5.06%)	wwPDB-VP
Wilson B-factor (Å ²)	41.7	Xtrriage
Anisotropy	0.420	Xtrriage
Bulk solvent k_{sol} (e/Å ³), B_{sol} (Å ²)	0.27 , 47.2	EDS
L-test for twinning ²	$\langle L \rangle = 0.47$, $\langle L^2 \rangle = 0.30$	Xtrriage
Estimated twinning fraction	No twinning to report.	Xtrriage
F_o, F_c correlation	0.95	EDS
Total number of atoms	17284	wwPDB-VP
Average B, all atoms (Å ²)	84.0	wwPDB-VP

Xtrriage's analysis on translational NCS is as follows: *The largest off-origin peak in the Patterson function is 4.74% of the height of the origin peak. No significant pseudotranslation is detected.*

¹Intensities estimated from amplitudes.

²Theoretical values of $\langle |L| \rangle$, $\langle L^2 \rangle$ for acentric reflections are 0.5, 0.333 respectively for untwinned datasets, and 0.375, 0.2 for perfectly twinned datasets.

5 Model quality i

5.1 Standard geometry i

Bond lengths and bond angles in the following residue types are not validated in this section: COA, MG

The Z score for a bond length (or angle) is the number of standard deviations the observed value is removed from the expected value. A bond length (or angle) with $|Z| > 5$ is considered an outlier worth inspection. RMSZ is the root-mean-square of all Z scores of the bond lengths (or angles).

Mol	Chain	Bond lengths		Bond angles	
		RMSZ	# Z >5	RMSZ	# Z >5
1	A	2.14	89/2804 (3.2%)	1.64	55/3808 (1.4%)
1	B	2.00	76/2804 (2.7%)	1.53	34/3808 (0.9%)
1	C	0.90	0/2804	0.83	0/3808
1	D	0.76	0/2804	0.76	1/3808 (0.0%)
1	E	0.84	0/2793	0.82	2/3794 (0.1%)
1	F	0.70	0/2793	0.75	1/3794 (0.0%)
All	All	1.36	165/16802 (1.0%)	1.12	93/22820 (0.4%)

Chiral center outliers are detected by calculating the chiral volume of a chiral center and verifying if the center is modelled as a planar moiety or with the opposite hand. A planarity outlier is detected by checking planarity of atoms in a peptide group, atoms in a mainchain group or atoms of a sidechain that are expected to be planar.

Mol	Chain	#Chirality outliers	#Planarity outliers
1	A	0	1

All (165) bond length outliers are listed below:

Mol	Chain	Res	Type	Atoms	Z	Observed(Å)	Ideal(Å)
1	B	353	GLU	CB-CG	14.56	1.79	1.52
1	A	302	PHE	CE1-CZ	12.24	1.60	1.37
1	A	255	SER	CB-OG	-11.06	1.27	1.42
1	A	53	ARG	CG-CD	10.35	1.77	1.51
1	A	187	TYR	CD2-CE2	10.24	1.54	1.39
1	B	255	SER	CB-OG	-9.96	1.29	1.42
1	B	187	TYR	CD2-CE2	9.37	1.53	1.39
1	A	200	LEU	CG-CD1	8.98	1.85	1.51
1	B	275	GLU	CD-OE2	8.90	1.35	1.25
1	B	353	GLU	CG-CD	-8.83	1.38	1.51
1	B	53	ARG	CG-CD	8.61	1.73	1.51
1	A	192	SER	C-O	8.54	1.39	1.23

Continued on next page...

Continued from previous page...

Mol	Chain	Res	Type	Atoms	Z	Observed(Å)	Ideal(Å)
1	A	197	ASP	CB-CG	8.49	1.69	1.51
1	B	29	ASN	CB-CG	8.32	1.70	1.51
1	B	300	VAL	CB-CG2	8.26	1.70	1.52
1	B	215	PHE	CG-CD1	8.05	1.50	1.38
1	A	241	ARG	CZ-NH1	8.03	1.43	1.33
1	A	51	VAL	CB-CG1	-7.93	1.36	1.52
1	B	115	PHE	CE2-CZ	7.68	1.51	1.37
1	B	253	TYR	CE1-CZ	7.61	1.48	1.38
1	B	39	ALA	CA-CB	-7.59	1.36	1.52
1	A	302	PHE	CG-CD2	7.59	1.50	1.38
1	A	32	TYR	CD2-CE2	-7.54	1.28	1.39
1	B	88	PRO	CG-CD	7.49	1.75	1.50
1	A	205	GLY	N-CA	7.49	1.57	1.46
1	B	170	LYS	CD-CE	7.42	1.69	1.51
1	B	153	CYS	CB-SG	7.40	1.94	1.82
1	B	241	ARG	CZ-NH1	7.39	1.42	1.33
1	B	192	SER	CB-OG	7.38	1.51	1.42
1	B	294	GLU	CG-CD	7.35	1.62	1.51
1	A	54	TRP	CE3-CZ3	7.33	1.50	1.38
1	A	206	TYR	CG-CD1	7.28	1.48	1.39
1	A	249	TYR	CD2-CE2	-7.11	1.28	1.39
1	B	183	SER	CA-CB	7.09	1.63	1.52
1	B	118	ASP	CB-CG	6.97	1.66	1.51
1	B	328	ARG	CG-CD	6.96	1.69	1.51
1	A	114	ARG	CZ-NH1	6.95	1.42	1.33
1	A	310	PRO	N-CA	6.93	1.59	1.47
1	B	115	PHE	CG-CD2	6.91	1.49	1.38
1	A	229	LYS	CD-CE	6.90	1.68	1.51
1	B	98	GLN	CG-CD	6.90	1.67	1.51
1	A	38	LEU	N-CA	6.86	1.60	1.46
1	A	68	GLU	CG-CD	6.82	1.62	1.51
1	B	115	PHE	CD1-CE1	6.81	1.52	1.39
1	B	215	PHE	CE2-CZ	6.81	1.50	1.37
1	B	304	ARG	CB-CG	6.78	1.70	1.52
1	A	329	LEU	C-O	6.74	1.36	1.23
1	A	99	PHE	CD1-CE1	6.73	1.52	1.39
1	A	246	HIS	C-O	6.68	1.36	1.23
1	A	306	ALA	CA-CB	6.67	1.66	1.52
1	A	146	PHE	CE1-CZ	6.67	1.50	1.37
1	A	148	VAL	CB-CG2	6.66	1.66	1.52
1	B	174	ALA	CA-CB	6.64	1.66	1.52
1	B	136	GLU	CG-CD	6.62	1.61	1.51

Continued on next page...

Continued from previous page...

Mol	Chain	Res	Type	Atoms	Z	Observed(Å)	Ideal(Å)
1	B	186	GLY	C-O	6.57	1.34	1.23
1	B	275	GLU	CG-CD	6.56	1.61	1.51
1	A	221	VAL	CB-CG2	-6.52	1.39	1.52
1	A	35	PRO	CG-CD	6.46	1.72	1.50
1	A	294	GLU	CG-CD	6.45	1.61	1.51
1	A	286	SER	CB-OG	-6.44	1.33	1.42
1	A	186	GLY	C-O	6.43	1.33	1.23
1	A	263	GLU	CG-CD	6.40	1.61	1.51
1	B	313	SER	CB-OG	-6.39	1.33	1.42
1	A	328	ARG	CZ-NH1	6.39	1.41	1.33
1	A	111	PRO	CA-CB	6.35	1.66	1.53
1	B	253	TYR	CG-CD2	6.30	1.47	1.39
1	A	225	VAL	CB-CG2	6.25	1.66	1.52
1	A	256	PHE	CE2-CZ	6.23	1.49	1.37
1	B	263	GLU	CG-CD	6.21	1.61	1.51
1	A	174	ALA	CA-CB	6.20	1.65	1.52
1	A	258	GLU	CD-OE2	6.20	1.32	1.25
1	A	245	ILE	C-O	6.19	1.35	1.23
1	A	212	LYS	CD-CE	6.16	1.66	1.51
1	B	25	ARG	NE-CZ	6.13	1.41	1.33
1	A	207	ASP	CB-CG	6.11	1.64	1.51
1	A	275	GLU	CB-CG	-6.10	1.40	1.52
1	B	96	GLU	CD-OE1	6.06	1.32	1.25
1	B	339	GLY	C-O	6.04	1.33	1.23
1	A	157	GLY	N-CA	6.02	1.55	1.46
1	A	187	TYR	C-O	-6.01	1.11	1.23
1	B	258	GLU	CG-CD	6.00	1.60	1.51
1	A	157	GLY	C-O	5.99	1.33	1.23
1	A	197	ASP	CG-OD2	5.96	1.39	1.25
1	B	249	TYR	CG-CD1	5.89	1.46	1.39
1	A	272	PHE	CE1-CZ	5.88	1.48	1.37
1	A	125	GLU	CD-OE1	5.87	1.32	1.25
1	B	204	ASP	C-O	5.84	1.34	1.23
1	B	259	GLU	CD-OE1	5.83	1.32	1.25
1	A	99	PHE	CG-CD2	5.81	1.47	1.38
1	B	297	ARG	CZ-NH1	5.81	1.40	1.33
1	A	297	ARG	CG-CD	5.78	1.66	1.51
1	B	25	ARG	CZ-NH2	5.75	1.40	1.33
1	A	22	GLU	CD-OE1	5.73	1.31	1.25
1	B	246	HIS	C-O	5.72	1.34	1.23
1	B	263	GLU	CB-CG	5.70	1.62	1.52
1	A	238	THR	CB-CG2	5.69	1.71	1.52

Continued on next page...

Continued from previous page...

Mol	Chain	Res	Type	Atoms	Z	Observed(Å)	Ideal(Å)
1	A	22	GLU	CD-OE2	5.63	1.31	1.25
1	A	240	HIS	C-O	5.61	1.34	1.23
1	B	31	PRO	CG-CD	5.61	1.69	1.50
1	B	353	GLU	CD-OE2	5.60	1.31	1.25
1	A	338	ARG	C-O	5.60	1.33	1.23
1	B	273	ARG	CG-CD	5.59	1.66	1.51
1	A	215	PHE	CE2-CZ	5.58	1.48	1.37
1	A	63	GLU	CG-CD	5.57	1.60	1.51
1	A	37	TYR	CE1-CZ	5.56	1.45	1.38
1	A	256	PHE	CG-CD2	5.56	1.47	1.38
1	A	112	ASP	C-O	5.54	1.33	1.23
1	A	192	SER	CB-OG	5.54	1.49	1.42
1	B	249	TYR	CA-CB	-5.53	1.41	1.53
1	B	34	LYS	CE-NZ	5.52	1.62	1.49
1	B	63	GLU	CG-CD	5.51	1.60	1.51
1	B	330	VAL	CB-CG1	5.51	1.64	1.52
1	A	169	TYR	CE1-CZ	5.50	1.45	1.38
1	A	275	GLU	CG-CD	5.50	1.60	1.51
1	B	347	ALA	CA-CB	5.50	1.64	1.52
1	B	256	PHE	CE1-CZ	5.48	1.47	1.37
1	A	249	TYR	CZ-OH	5.48	1.47	1.37
1	A	250	GLU	CA-CB	-5.47	1.42	1.53
1	B	294	GLU	CD-OE1	5.47	1.31	1.25
1	A	330	VAL	C-O	5.46	1.33	1.23
1	A	63	GLU	CD-OE1	5.46	1.31	1.25
1	B	106	VAL	CB-CG1	5.45	1.64	1.52
1	A	130	THR	CA-CB	5.44	1.67	1.53
1	B	318	ARG	NE-CZ	5.44	1.40	1.33
1	A	333	ILE	C-O	5.43	1.33	1.23
1	B	176	ILE	CB-CG2	-5.42	1.36	1.52
1	A	258	GLU	CD-OE1	5.42	1.31	1.25
1	A	304	ARG	NE-CZ	5.40	1.40	1.33
1	A	63	GLU	CB-CG	5.36	1.62	1.52
1	B	333	ILE	C-O	5.34	1.33	1.23
1	A	330	VAL	CB-CG1	5.32	1.64	1.52
1	A	211	ILE	CA-CB	5.31	1.67	1.54
1	B	197	ASP	CG-OD2	5.30	1.37	1.25
1	A	199	ILE	CA-CB	-5.30	1.42	1.54
1	A	36	ALA	CA-CB	5.30	1.63	1.52
1	B	238	THR	N-CA	-5.29	1.35	1.46
1	B	59	GLN	CB-CG	5.27	1.66	1.52
1	A	238	THR	CA-C	-5.27	1.39	1.52

Continued on next page...

Continued from previous page...

Mol	Chain	Res	Type	Atoms	Z	Observed(Å)	Ideal(Å)
1	A	250	GLU	CD-OE1	5.26	1.31	1.25
1	B	315	VAL	CB-CG2	5.25	1.63	1.52
1	B	340	ALA	CA-CB	5.24	1.63	1.52
1	B	356	TYR	CE1-CZ	5.23	1.45	1.38
1	B	215	PHE	CD1-CE1	5.22	1.49	1.39
1	A	305	TRP	CG-CD1	5.22	1.44	1.36
1	B	18	LEU	C-O	5.20	1.33	1.23
1	B	247	GLY	CA-C	5.20	1.60	1.51
1	B	280	LYS	CE-NZ	5.20	1.62	1.49
1	A	318	ARG	NE-CZ	5.19	1.39	1.33
1	A	259	GLU	CD-OE1	5.17	1.31	1.25
1	B	306	ALA	CA-CB	5.17	1.63	1.52
1	A	98	GLN	CG-CD	5.17	1.62	1.51
1	B	241	ARG	C-O	5.16	1.33	1.23
1	A	207	ASP	CG-OD1	5.16	1.37	1.25
1	A	176	ILE	N-CA	5.13	1.56	1.46
1	A	253	TYR	CE2-CZ	-5.10	1.31	1.38
1	A	187	TYR	CG-CD1	5.09	1.45	1.39
1	A	197	ASP	CG-OD1	5.09	1.37	1.25
1	B	136	GLU	CD-OE1	5.08	1.31	1.25
1	B	215	PHE	CD2-CE2	5.07	1.49	1.39
1	A	84	PHE	CE2-CZ	5.05	1.47	1.37
1	B	205	GLY	C-O	5.05	1.31	1.23
1	A	333	ILE	CA-C	5.04	1.66	1.52
1	B	143	TRP	CE3-CZ3	5.04	1.47	1.38
1	B	88	PRO	CA-CB	5.04	1.63	1.53
1	B	227	GLU	CB-CG	5.03	1.61	1.52

All (93) bond angle outliers are listed below:

Mol	Chain	Res	Type	Atoms	Z	Observed(°)	Ideal(°)
1	A	114	ARG	NE-CZ-NH2	-15.06	112.77	120.30
1	B	328	ARG	NE-CZ-NH2	13.87	127.23	120.30
1	A	255	SER	N-CA-CB	-11.24	93.64	110.50
1	A	141	ARG	NE-CZ-NH2	-11.07	114.77	120.30
1	B	318	ARG	NE-CZ-NH1	10.37	125.49	120.30
1	B	200	LEU	CB-CG-CD2	-9.66	94.58	111.00
1	B	114	ARG	NE-CZ-NH2	-9.13	115.73	120.30
1	A	114	ARG	NE-CZ-NH1	9.09	124.85	120.30
1	A	78	ASP	CB-CG-OD1	-8.80	110.38	118.30
1	A	328	ARG	NE-CZ-NH1	-8.63	115.99	120.30
1	A	141	ARG	NE-CZ-NH1	8.47	124.53	120.30

Continued on next page...

Continued from previous page...

Mol	Chain	Res	Type	Atoms	Z	Observed(°)	Ideal(°)
1	A	292	MET	CG-SD-CE	-8.46	86.67	100.20
1	B	292	MET	CG-SD-CE	-7.93	87.51	100.20
1	B	140	ARG	NE-CZ-NH2	-7.87	116.36	120.30
1	B	329	LEU	CA-CB-CG	7.86	133.38	115.30
1	B	353	GLU	CG-CD-OE1	-7.84	102.61	118.30
1	B	252	LEU	CB-CG-CD2	-7.82	97.71	111.00
1	A	319	LEU	CB-CG-CD1	7.39	123.56	111.00
1	A	295	ASP	CB-CG-OD1	7.31	124.88	118.30
1	A	78	ASP	CB-CG-OD2	7.07	124.67	118.30
1	A	194	ASP	CB-CG-OD2	6.91	124.52	118.30
1	B	77	MET	CG-SD-CE	-6.84	89.26	100.20
1	B	209	LYS	CD-CE-NZ	6.75	127.23	111.70
1	A	245	ILE	CG1-CB-CG2	-6.71	96.64	111.40
1	A	77	MET	CG-SD-CE	-6.69	89.49	100.20
1	A	216	ARG	NE-CZ-NH2	-6.66	116.97	120.30
1	B	255	SER	N-CA-CB	-6.63	100.55	110.50
1	B	216	ARG	NE-CZ-NH2	-6.60	117.00	120.30
1	A	303	ASP	CB-CG-OD2	6.55	124.20	118.30
1	A	133	LEU	CB-CG-CD1	-6.51	99.92	111.00
1	A	76	LEU	CA-CB-CG	6.49	130.23	115.30
1	B	319	LEU	CB-CG-CD2	-6.41	100.11	111.00
1	B	211	ILE	CA-CB-CG2	6.36	123.61	110.90
1	B	250	GLU	OE1-CD-OE2	-6.24	115.82	123.30
1	A	241	ARG	NE-CZ-NH2	-6.16	117.22	120.30
1	B	107	ILE	CG1-CB-CG2	-6.15	97.86	111.40
1	B	133	LEU	CB-CG-CD1	-6.15	100.55	111.00
1	B	297	ARG	CD-NE-CZ	-6.14	115.00	123.60
1	A	196	VAL	CA-CB-CG2	-6.13	101.71	110.90
1	B	114	ARG	NE-CZ-NH1	6.11	123.35	120.30
1	A	207	ASP	CB-CG-OD2	-6.07	112.84	118.30
1	A	87	LEU	CB-CG-CD1	6.05	121.29	111.00
1	A	289	ILE	CG1-CB-CG2	-6.04	98.12	111.40
1	A	216	ARG	NE-CZ-NH1	6.03	123.31	120.30
1	A	200	LEU	CB-CA-C	-6.00	98.80	110.20
1	A	211	ILE	CA-CB-CG2	5.98	122.85	110.90
1	A	182	LEU	CB-CG-CD2	-5.96	100.86	111.00
1	B	87	LEU	CB-CG-CD1	5.96	121.13	111.00
1	B	195	VAL	CB-CA-C	-5.81	100.36	111.40
1	A	212	LYS	CD-CE-NZ	-5.80	98.35	111.70
1	B	250	GLU	CG-CD-OE2	5.76	129.83	118.30
1	A	251	VAL	CG1-CB-CG2	-5.73	101.74	110.90
1	B	66	ASP	CB-CG-OD1	5.72	123.45	118.30

Continued on next page...

Continued from previous page...

Mol	Chain	Res	Type	Atoms	Z	Observed(°)	Ideal(°)
1	B	172	ASP	CB-CG-OD2	5.69	123.42	118.30
1	A	138	ARG	NE-CZ-NH2	-5.66	117.47	120.30
1	A	148	VAL	CG1-CB-CG2	-5.62	101.90	110.90
1	A	328	ARG	NE-CZ-NH2	5.58	123.09	120.30
1	B	89	GLN	CB-CA-C	-5.57	99.26	110.40
1	A	216	ARG	CD-NE-CZ	5.56	131.38	123.60
1	B	138	ARG	NE-CZ-NH1	5.53	123.06	120.30
1	B	204	ASP	CB-CG-OD1	5.52	123.26	118.30
1	A	257	LYS	CB-CA-C	-5.50	99.39	110.40
1	A	194	ASP	CB-CG-OD1	-5.49	113.36	118.30
1	A	167	LYS	CD-CE-NZ	-5.49	99.07	111.70
1	A	281	LEU	CB-CG-CD1	-5.49	101.67	111.00
1	A	338	ARG	NE-CZ-NH2	-5.47	117.56	120.30
1	A	138	ARG	NE-CZ-NH1	5.44	123.02	120.30
1	A	81	ASP	CB-CG-OD1	5.43	123.18	118.30
1	A	135	ASP	CB-CG-OD1	5.39	123.15	118.30
1	B	353	GLU	CB-CG-CD	-5.37	99.71	114.20
1	A	273	ARG	CB-CA-C	-5.35	99.70	110.40
1	B	353	GLU	OE1-CD-OE2	5.35	129.72	123.30
1	A	193	LEU	CB-CG-CD1	5.33	120.07	111.00
1	A	177	THR	N-CA-CB	-5.33	100.17	110.30
1	A	265	VAL	CG1-CB-CG2	-5.29	102.44	110.90
1	A	273	ARG	NE-CZ-NH1	-5.27	117.67	120.30
1	A	211	ILE	N-CA-C	-5.24	96.85	111.00
1	B	18	LEU	CA-CB-CG	-5.19	103.36	115.30
1	A	325	ARG	NE-CZ-NH2	-5.19	117.71	120.30
1	A	292	MET	CB-CG-SD	-5.18	96.86	112.40
1	B	178	THR	CA-CB-CG2	5.17	119.64	112.40
1	D	273	ARG	CG-CD-NE	5.16	122.63	111.80
1	A	190	ILE	CG1-CB-CG2	-5.15	100.07	111.40
1	F	338	ARG	NE-CZ-NH1	5.12	122.86	120.30
1	A	205	GLY	N-CA-C	-5.11	100.33	113.10
1	B	101	LYS	CD-CE-NZ	-5.09	100.00	111.70
1	A	112	ASP	CB-CG-OD1	5.08	122.87	118.30
1	E	338	ARG	NE-CZ-NH2	-5.07	117.77	120.30
1	A	211	ILE	N-CA-CB	-5.06	99.15	110.80
1	A	332	LEU	CB-CG-CD2	5.06	119.61	111.00
1	A	172	ASP	CB-CG-OD1	5.04	122.83	118.30
1	E	53	ARG	NE-CZ-NH2	-5.03	117.79	120.30
1	B	279	LEU	CB-CG-CD1	5.01	119.51	111.00

There are no chirality outliers.

All (1) planarity outliers are listed below:

Mol	Chain	Res	Type	Group
1	A	237	ALA	Mainchain

5.2 Too-close contacts [i](#)

In the following table, the Non-H and H(model) columns list the number of non-hydrogen atoms and hydrogen atoms in the chain respectively. The H(added) column lists the number of hydrogen atoms added and optimized by MolProbity. The Clashes column lists the number of clashes within the asymmetric unit, whereas Symm-Clashes lists symmetry-related clashes.

Mol	Chain	Non-H	H(model)	H(added)	Clashes	Symm-Clashes
1	A	2743	0	2799	55	0
1	B	2743	0	2799	56	0
1	C	2743	0	2799	63	1
1	D	2743	0	2799	50	0
1	E	2732	0	2786	53	0
1	F	2732	0	2786	44	1
2	A	1	0	0	0	0
2	B	1	0	0	0	0
2	C	1	0	0	0	0
2	D	1	0	0	0	0
2	E	1	0	0	0	0
2	F	1	0	0	0	0
3	A	48	0	32	1	0
3	B	48	0	32	3	0
3	C	48	0	32	1	0
3	D	48	0	32	4	0
3	E	48	0	32	1	0
3	F	48	0	32	2	0
4	A	184	0	0	13	0
4	B	172	0	0	5	0
4	C	59	0	0	20	0
4	D	57	0	0	14	0
4	E	52	0	0	10	0
4	F	30	0	0	12	0
All	All	17284	0	16960	326	1

The all-atom clashscore is defined as the number of clashes found per 1000 atoms (including hydrogen atoms). The all-atom clashscore for this structure is 10.

All (326) close contacts within the same asymmetric unit are listed below, sorted by their clash magnitude.

Atom-1	Atom-2	Interatomic distance (Å)	Clash overlap (Å)
1:A:53:ARG:CD	1:A:53:ARG:CG	1.77	1.61
1:B:353:GLU:CG	1:B:353:GLU:CB	1.79	1.58
1:A:200:LEU:CD1	1:A:200:LEU:CG	1.85	1.54
1:B:88:PRO:CD	1:B:88:PRO:CG	1.75	1.51
1:C:223:ARG:HA	4:C:656:HOH:O	1.19	1.29
1:F:134:ILE:HG22	4:F:613:HOH:O	1.22	1.28
1:A:231:GLU:HG3	4:A:733:HOH:O	1.41	1.16
1:E:223:ARG:HA	4:E:643:HOH:O	1.41	1.15
1:C:100:ALA:HB2	4:C:655:HOH:O	1.54	1.07
1:F:34:LYS:HG2	4:F:628:HOH:O	1.52	1.06
1:B:353:GLU:HB2	1:B:353:GLU:OE1	1.60	1.02
1:A:262:ALA:H	1:A:321:GLN:HE22	1.07	1.00
1:C:6:ARG:HA	1:C:6:ARG:NH1	1.77	0.99
1:B:353:GLU:CB	1:B:353:GLU:OE1	2.10	0.98
1:C:6:ARG:HA	1:C:6:ARG:HH11	1.28	0.94
1:C:267:GLU:HG3	4:C:650:HOH:O	1.67	0.93
1:F:206:TYR:HA	4:F:627:HOH:O	1.70	0.89
1:C:13:LEU:HD12	1:C:85:SER:HB2	1.57	0.86
1:B:353:GLU:CB	1:B:353:GLU:CD	2.44	0.85
1:E:252:LEU:HB2	1:E:329:LEU:CD2	2.06	0.85
1:B:353:GLU:C	1:B:353:GLU:HG3	1.95	0.84
1:A:262:ALA:H	1:A:321:GLN:NE2	1.75	0.84
1:C:252:LEU:HB2	1:C:329:LEU:CD2	2.08	0.84
1:B:68:GLU:HG2	4:B:741:HOH:O	1.80	0.81
1:C:167:LYS:HA	4:C:656:HOH:O	1.81	0.81
1:A:137:GLN:HE22	1:A:147:ILE:H	1.26	0.81
1:F:34:LYS:CG	4:F:628:HOH:O	2.18	0.80
1:D:353:GLU:HA	4:D:654:HOH:O	1.81	0.80
1:C:294:GLU:HB3	4:C:638:HOH:O	1.82	0.80
1:B:353:GLU:CG	1:B:353:GLU:C	2.49	0.79
1:C:137:GLN:HE21	1:C:143:TRP:HE1	1.31	0.79
1:F:252:LEU:HB2	1:F:329:LEU:CD2	2.13	0.79
1:B:6:ARG:HD2	1:B:7:THR:N	1.98	0.78
1:B:6:ARG:CD	1:B:7:THR:H	1.96	0.78
1:D:252:LEU:HB2	1:D:329:LEU:CD2	2.12	0.78
1:B:137:GLN:HE22	1:B:147:ILE:H	1.32	0.77
1:D:6:ARG:HH11	1:D:6:ARG:N	1.83	0.76
1:C:252:LEU:HB2	1:C:329:LEU:HD23	1.67	0.75
1:D:262:ALA:H	1:D:321:GLN:HE22	1.33	0.74
1:A:53:ARG:CD	1:A:53:ARG:CB	2.65	0.73
1:D:230:LEU:HD23	4:D:611:HOH:O	1.87	0.73
1:E:129:HIS:CD2	1:E:222:LYS:HZ1	2.06	0.73

Continued on next page...

Continued from previous page...

Atom-1	Atom-2	Interatomic distance (Å)	Clash overlap (Å)
1:A:53:ARG:CG	1:A:53:ARG:NE	2.51	0.73
1:B:353:GLU:CG	1:B:353:GLU:CA	2.67	0.72
1:A:6:ARG:CZ	1:A:6:ARG:HB3	2.20	0.71
1:B:53:ARG:HE	1:B:55:GLN:NE2	1.89	0.71
1:C:294:GLU:HA	4:C:618:HOH:O	1.92	0.70
1:C:120:PRO:HA	4:C:643:HOH:O	1.91	0.69
1:B:353:GLU:HG3	1:B:353:GLU:O	1.91	0.69
1:B:6:ARG:HD2	1:B:7:THR:H	1.53	0.69
1:A:262:ALA:N	1:A:321:GLN:HE22	1.86	0.69
1:D:352:VAL:HG12	4:D:654:HOH:O	1.94	0.68
1:E:252:LEU:HB2	1:E:329:LEU:HD23	1.73	0.68
1:C:89:GLN:HG2	1:C:111:PRO:HG2	1.76	0.68
1:F:137:GLN:HE21	1:F:143:TRP:HE1	1.40	0.68
1:C:100:ALA:CA	4:C:655:HOH:O	2.42	0.68
1:E:167:LYS:HA	4:E:643:HOH:O	1.92	0.67
1:A:53:ARG:HH21	1:A:55:GLN:HE22	1.39	0.67
1:F:252:LEU:HB2	1:F:329:LEU:HD23	1.76	0.67
1:E:225:VAL:HG22	4:E:649:HOH:O	1.94	0.66
1:E:226:ASP:HB2	4:E:608:HOH:O	1.96	0.66
1:A:53:ARG:HD2	4:A:707:HOH:O	1.96	0.66
1:C:262:ALA:H	1:C:321:GLN:HE22	1.41	0.66
1:E:223:ARG:HB2	4:E:646:HOH:O	1.95	0.66
1:E:262:ALA:H	1:E:321:GLN:HE22	1.42	0.66
1:A:53:ARG:HB2	4:A:707:HOH:O	1.95	0.65
1:B:6:ARG:NH1	4:B:768:HOH:O	2.30	0.65
1:A:229:LYS:HD3	1:A:229:LYS:N	2.12	0.65
1:F:120:PRO:HG2	1:F:148:VAL:HG22	1.77	0.65
1:C:153:CYS:HG	3:C:402:COA:HS1	0.69	0.65
1:E:89:GLN:HG2	1:E:111:PRO:HG2	1.79	0.65
1:B:137:GLN:HE21	1:B:143:TRP:HE1	1.41	0.65
1:E:129:HIS:CD2	1:E:222:LYS:NZ	2.65	0.64
3:E:402:COA:O5P	3:E:402:COA:H22	1.98	0.64
1:B:18:LEU:HD12	1:B:186:GLY:HA2	1.81	0.63
1:E:295:ASP:OD2	4:E:645:HOH:O	2.15	0.63
1:D:137:GLN:HE21	1:D:143:TRP:HE1	1.46	0.63
1:B:262:ALA:H	1:B:321:GLN:HE22	1.45	0.62
1:A:226:ASP:HB2	4:A:776:HOH:O	1.98	0.62
1:C:129:HIS:ND1	4:C:601:HOH:O	2.31	0.62
1:A:200:LEU:CD1	1:A:200:LEU:CD2	2.78	0.62
1:C:13:LEU:HD12	1:C:85:SER:CB	2.29	0.62
1:F:18:LEU:HD12	1:F:186:GLY:HA2	1.80	0.62

Continued on next page...

Continued from previous page...

Atom-1	Atom-2	Interatomic distance (Å)	Clash overlap (Å)
1:C:120:PRO:HG2	1:C:148:VAL:HG22	1.82	0.61
1:F:262:ALA:H	1:F:321:GLN:HE22	1.46	0.61
1:E:137:GLN:HE21	1:E:143:TRP:HE1	1.48	0.61
1:F:42:GLY:CA	4:F:624:HOH:O	2.47	0.61
1:B:153:CYS:SG	3:B:402:COA:S1P	2.97	0.61
1:F:42:GLY:N	4:F:624:HOH:O	2.34	0.61
1:D:120:PRO:HG2	1:D:148:VAL:HG22	1.80	0.61
1:D:252:LEU:HB2	1:D:329:LEU:HD23	1.82	0.60
1:C:318:ARG:HA	4:C:602:HOH:O	2.00	0.60
1:C:267:GLU:CA	4:C:650:HOH:O	2.49	0.60
1:C:228:PRO:HG3	1:C:257:LYS:HD2	1.84	0.60
1:D:135:ASP:HA	4:D:610:HOH:O	2.01	0.60
1:A:272:PHE:O	1:A:273:ARG:NH1	2.35	0.60
1:D:262:ALA:H	1:D:321:GLN:NE2	1.99	0.60
3:B:402:COA:H10	4:B:743:HOH:O	2.01	0.60
1:A:92:ALA:O	1:A:96:GLU:HG3	2.02	0.59
1:D:143:TRP:HA	4:D:645:HOH:O	2.01	0.59
1:B:259:GLU:HG3	1:B:324:LYS:HB3	1.83	0.59
1:A:74:PRO:HB3	1:A:102:GLU:HG3	1.85	0.59
1:B:120:PRO:HG2	1:B:148:VAL:HG22	1.83	0.59
1:A:16:THR:HG21	1:A:51:VAL:HG22	1.85	0.58
1:D:70:LYS:HG2	4:D:607:HOH:O	2.03	0.57
1:A:6:ARG:CZ	1:A:6:ARG:CB	2.81	0.57
1:A:151:PRO:CG	1:A:217:ILE:HD11	2.34	0.57
1:C:267:GLU:N	4:C:650:HOH:O	2.36	0.57
1:D:126:LEU:HD11	1:D:160:ILE:HA	1.86	0.57
1:C:138:ARG:HH21	1:C:146:PHE:HD2	1.52	0.57
1:A:200:LEU:CD1	1:A:200:LEU:CB	2.77	0.57
1:E:120:PRO:HG2	1:E:148:VAL:HG22	1.86	0.56
1:B:24:VAL:HG13	1:B:64:ILE:HG13	1.87	0.56
1:B:74:PRO:HB2	1:B:102:GLU:HG3	1.86	0.56
1:C:137:GLN:NE2	1:C:143:TRP:HE1	2.00	0.56
1:A:50:GLU:OE1	4:A:772:HOH:O	2.18	0.56
1:E:67:MET:HE3	4:E:614:HOH:O	2.04	0.56
1:D:228:PRO:HG3	1:D:257:LYS:HD2	1.89	0.55
1:C:89:GLN:CG	1:C:111:PRO:HG2	2.37	0.55
1:B:137:GLN:HE22	1:B:147:ILE:N	2.04	0.55
1:C:53:ARG:HH11	1:C:53:ARG:HG3	1.72	0.55
1:D:137:GLN:HE22	1:D:147:ILE:H	1.56	0.54
1:F:131:ILE:C	4:F:629:HOH:O	2.46	0.54
1:A:245:ILE:HD11	1:B:196:VAL:HG12	1.88	0.54

Continued on next page...

Continued from previous page...

Atom-1	Atom-2	Interatomic distance (Å)	Clash overlap (Å)
1:F:132:SER:N	4:F:629:HOH:O	2.41	0.54
1:E:228:PRO:HG3	1:E:257:LYS:HD2	1.90	0.54
1:D:75:LYS:HE3	4:D:656:HOH:O	2.07	0.53
1:C:262:ALA:H	1:C:321:GLN:NE2	2.03	0.53
1:F:262:ALA:H	1:F:321:GLN:NE2	2.06	0.53
1:E:121:LEU:HD23	1:E:216:ARG:HG2	1.89	0.53
1:A:6:ARG:N	4:A:684:HOH:O	2.41	0.53
1:B:16:THR:HG21	1:B:51:VAL:HG22	1.90	0.53
1:B:60:VAL:HG23	4:B:716:HOH:O	2.08	0.53
1:A:127:ASN:N	1:A:128:PRO:CD	2.71	0.53
1:F:228:PRO:HG3	1:F:257:LYS:HD2	1.91	0.52
1:E:262:ALA:H	1:E:321:GLN:NE2	2.08	0.52
1:D:77:MET:O	1:D:80:VAL:N	2.37	0.52
1:E:283:THR:O	1:E:283:THR:HG22	2.10	0.52
1:B:6:ARG:CD	1:B:7:THR:N	2.65	0.52
1:C:154:THR:HG21	1:C:180:GLN:NE2	2.25	0.52
1:E:167:LYS:HG3	4:E:643:HOH:O	2.09	0.52
1:D:27:LEU:HD21	1:D:345:ILE:HG12	1.92	0.52
1:F:132:SER:HA	4:F:629:HOH:O	2.09	0.52
1:F:206:TYR:CA	4:F:627:HOH:O	2.42	0.52
1:D:213:GLU:O	1:D:217:ILE:HG13	2.10	0.51
1:D:18:LEU:HD12	1:D:186:GLY:HA2	1.92	0.51
1:F:128:PRO:O	1:F:131:ILE:HG12	2.11	0.51
1:E:126:LEU:HD11	1:E:160:ILE:HA	1.93	0.51
1:D:202:LEU:HD22	4:D:634:HOH:O	2.11	0.51
1:E:118:ASP:HA	4:E:644:HOH:O	2.10	0.51
1:C:121:LEU:HD23	1:C:216:ARG:HG2	1.92	0.51
1:E:53:ARG:HE	1:E:55:GLN:NE2	2.09	0.51
1:C:119:VAL:O	1:C:216:ARG:NH2	2.42	0.50
1:D:280:LYS:HB3	4:D:652:HOH:O	2.11	0.50
1:C:136:GLU:O	1:C:140:ARG:HB2	2.11	0.50
1:D:38:LEU:O	4:D:651:HOH:O	2.18	0.50
1:B:334:HIS:CE1	1:B:337:VAL:HG23	2.46	0.50
1:D:13:LEU:HD12	1:D:85:SER:HB2	1.94	0.50
1:B:53:ARG:NE	1:B:55:GLN:NE2	2.59	0.49
1:B:266:LYS:NZ	1:B:293:ASN:ND2	2.59	0.49
1:E:89:GLN:CG	1:E:111:PRO:HG2	2.42	0.49
1:B:53:ARG:HH21	1:B:55:GLN:HE22	1.60	0.49
1:B:262:ALA:H	1:B:321:GLN:NE2	2.10	0.49
1:B:125:GLU:N	1:B:125:GLU:OE1	2.44	0.49
1:A:137:GLN:HE21	1:A:143:TRP:HE1	1.59	0.49

Continued on next page...

Continued from previous page...

Atom-1	Atom-2	Interatomic distance (Å)	Clash overlap (Å)
1:B:136:GLU:O	1:B:140:ARG:HG3	2.12	0.49
1:F:333:ILE:HD11	1:F:338:ARG:HG3	1.94	0.49
1:D:127:ASN:HB2	1:D:130:THR:HG23	1.94	0.49
1:A:76:LEU:HD13	4:A:769:HOH:O	2.13	0.49
1:E:18:LEU:HD12	1:E:186:GLY:HA2	1.95	0.49
1:A:98:GLN:HG2	4:A:710:HOH:O	2.13	0.49
1:C:77:MET:O	1:C:80:VAL:N	2.42	0.49
1:F:53:ARG:HG3	4:F:622:HOH:O	2.13	0.48
1:B:53:ARG:HE	1:B:55:GLN:HE21	1.60	0.48
1:C:100:ALA:CB	4:C:655:HOH:O	2.24	0.48
1:D:153:CYS:SG	3:D:402:COA:S1P	3.05	0.48
1:E:137:GLN:HE22	1:E:147:ILE:H	1.61	0.48
1:A:73:ASP:H	1:A:77:MET:CE	2.26	0.48
1:B:288:PRO:HD2	4:B:629:HOH:O	2.12	0.48
1:C:115:PHE:CZ	1:C:212:LYS:HD3	2.48	0.48
1:A:359:LYS:HE2	4:A:730:HOH:O	2.13	0.48
1:E:199:ILE:O	1:E:201:PRO:HD3	2.14	0.47
1:F:137:GLN:NE2	1:F:143:TRP:HE1	2.10	0.47
1:B:179:ILE:HG22	1:B:242:ILE:HG12	1.95	0.47
1:A:297:ARG:HB3	1:A:298:PRO:HA	1.95	0.47
1:C:53:ARG:HE	1:C:55:GLN:HE21	1.62	0.47
1:F:182:LEU:HD11	1:F:243:ALA:HA	1.96	0.47
1:E:13:LEU:HD12	1:E:85:SER:HB2	1.96	0.47
1:C:280:LYS:HA	4:C:619:HOH:O	2.14	0.47
1:E:53:ARG:HG3	1:E:53:ARG:HH11	1.79	0.47
1:F:13:LEU:HD12	1:F:85:SER:HB2	1.97	0.47
1:A:121:LEU:HD23	1:A:216:ARG:HD3	1.97	0.47
1:C:252:LEU:HB2	1:C:329:LEU:HD21	1.94	0.47
1:D:138:ARG:HH21	1:D:146:PHE:HD2	1.61	0.47
1:C:308:ASP:HA	4:C:625:HOH:O	2.15	0.47
1:E:128:PRO:O	1:E:131:ILE:HG12	2.15	0.47
1:F:108:SER:HB3	1:F:149:THR:HG22	1.97	0.47
1:C:53:ARG:HE	1:C:55:GLN:NE2	2.12	0.46
1:D:128:PRO:O	1:D:131:ILE:HG12	2.15	0.46
1:A:116:ASP:HB2	1:A:119:VAL:HG23	1.97	0.46
1:A:121:LEU:CD2	1:A:216:ARG:HD3	2.45	0.46
1:F:89:GLN:HG2	1:F:111:PRO:HG2	1.98	0.46
1:B:137:GLN:NE2	1:B:147:ILE:H	2.08	0.46
1:B:153:CYS:HG	3:B:402:COA:HS1	1.44	0.46
1:B:173:GLY:H	1:B:255:SER:HB3	1.81	0.46
1:A:334:HIS:CE1	1:A:337:VAL:HG23	2.51	0.46

Continued on next page...

Continued from previous page...

Atom-1	Atom-2	Interatomic distance (Å)	Clash overlap (Å)
1:F:121:LEU:HD23	1:F:216:ARG:HG2	1.96	0.46
1:C:333:ILE:HD11	1:C:338:ARG:HG3	1.97	0.46
1:D:28:SER:HB3	4:D:628:HOH:O	2.15	0.46
1:B:252:LEU:HD12	1:B:252:LEU:N	2.31	0.46
1:A:116:ASP:HB2	1:A:119:VAL:CG2	2.46	0.46
1:A:275:GLU:N	1:A:276:PRO:CD	2.79	0.45
1:E:333:ILE:HD11	1:E:338:ARG:HG3	1.98	0.45
1:F:77:MET:O	1:F:80:VAL:N	2.47	0.45
1:A:101:LYS:HB2	1:A:101:LYS:HE3	1.69	0.45
1:D:297:ARG:HB3	1:D:298:PRO:HA	1.98	0.45
1:F:75:LYS:H	1:F:75:LYS:HG2	1.55	0.45
1:A:229:LYS:HD3	1:A:229:LYS:H	1.81	0.45
1:D:9:LYS:HG3	1:D:36:ALA:CB	2.45	0.45
1:D:53:ARG:HG3	1:D:53:ARG:HH11	1.82	0.45
1:D:89:GLN:HE21	1:D:89:GLN:HB3	1.44	0.45
1:B:34:LYS:HE2	1:B:34:LYS:HA	1.98	0.45
1:E:329:LEU:HD23	1:E:329:LEU:C	2.37	0.45
1:D:154:THR:HG21	1:D:180:GLN:NE2	2.32	0.45
1:F:211:ILE:HD12	1:F:211:ILE:HA	1.70	0.45
1:D:121:LEU:HD23	1:D:216:ARG:HG2	1.99	0.45
1:E:213:GLU:O	1:E:217:ILE:HG13	2.17	0.45
1:C:137:GLN:HE22	1:C:147:ILE:H	1.63	0.45
1:F:199:ILE:O	1:F:201:PRO:HD3	2.16	0.44
1:B:333:ILE:HD11	1:B:338:ARG:HG3	1.98	0.44
1:C:297:ARG:HB3	1:C:298:PRO:HA	1.99	0.44
1:A:152:LEU:O	1:A:153:CYS:C	2.56	0.44
1:B:170:LYS:HA	1:B:227:GLU:O	2.17	0.44
1:F:73:ASP:HA	1:F:74:PRO:HD2	1.83	0.44
1:A:13:LEU:HA	1:A:39:ALA:HB3	2.00	0.44
1:E:89:GLN:HE21	1:E:89:GLN:HB3	1.40	0.44
1:F:276:PRO:HB3	1:F:281:LEU:HD12	2.00	0.44
1:C:283:THR:HG22	1:C:283:THR:O	2.18	0.44
1:D:252:LEU:HB2	1:D:329:LEU:HD21	1.97	0.44
1:C:192:SER:O	1:C:196:VAL:HG23	2.18	0.44
1:C:267:GLU:HA	4:C:650:HOH:O	2.14	0.44
1:A:74:PRO:CB	1:A:102:GLU:HG3	2.47	0.43
1:D:355:GLY:HA2	4:D:637:HOH:O	2.17	0.43
1:A:181:SER:HA	1:A:244:THR:OG1	2.17	0.43
1:A:209:LYS:NZ	4:A:727:HOH:O	2.51	0.43
1:D:207:ASP:OD2	4:D:632:HOH:O	2.21	0.43
1:A:57:VAL:HG22	1:A:58:GLY:N	2.34	0.43

Continued on next page...

Continued from previous page...

Atom-1	Atom-2	Interatomic distance (Å)	Clash overlap (Å)
1:E:138:ARG:HH21	1:E:146:PHE:HD2	1.65	0.43
1:D:180:GLN:HB3	1:D:248:HIS:CE1	2.53	0.43
1:E:275:GLU:N	1:E:276:PRO:CD	2.81	0.43
1:F:23:TYR:CZ	1:F:341:ALA:HA	2.54	0.43
1:A:261:ALA:HA	1:A:321:GLN:HE22	1.84	0.43
1:A:316:VAL:HA	1:A:331:SER:HA	2.01	0.43
1:C:263:GLU:N	4:C:632:HOH:O	2.51	0.43
1:C:322:VAL:HA	4:C:604:HOH:O	2.18	0.43
1:A:128:PRO:HG3	4:A:708:HOH:O	2.18	0.43
1:E:13:LEU:HA	1:E:39:ALA:HB3	2.01	0.43
1:E:266:LYS:NZ	1:E:293:ASN:ND2	2.67	0.43
1:E:329:LEU:HD23	1:E:329:LEU:O	2.18	0.43
1:A:62:LYS:H	1:A:62:LYS:HG2	1.58	0.42
1:F:126:LEU:HD11	1:F:160:ILE:HA	2.01	0.42
1:F:137:GLN:HE22	1:F:147:ILE:H	1.65	0.42
1:F:297:ARG:HB3	1:F:298:PRO:HA	1.99	0.42
1:B:74:PRO:HG2	1:B:98:GLN:HG3	2.01	0.42
1:A:229:LYS:HE3	4:A:704:HOH:O	2.18	0.42
1:B:89:GLN:HG2	1:B:111:PRO:HG3	2.01	0.42
1:E:95:VAL:HG23	4:E:641:HOH:O	2.18	0.42
3:A:402:COA:H22	4:A:630:HOH:O	2.19	0.42
1:B:270:GLU:HG3	1:B:291:VAL:HG21	2.02	0.42
1:D:19:VAL:HG23	3:D:402:COA:H132	2.02	0.42
1:E:87:LEU:HA	1:E:87:LEU:HD12	1.79	0.42
1:F:165:ILE:HG12	1:F:265:VAL:HG13	2.02	0.42
1:C:158:ALA:O	1:C:161:PRO:HD2	2.20	0.42
1:B:283:THR:O	1:B:283:THR:HG22	2.20	0.42
1:F:356:TYR:CE2	4:F:629:HOH:O	2.56	0.42
1:B:211:ILE:HG13	1:B:235:LEU:HB3	2.01	0.41
1:C:199:ILE:O	1:C:201:PRO:HD3	2.20	0.41
1:D:127:ASN:HB2	1:D:130:THR:CG2	2.50	0.41
1:E:211:ILE:HD12	1:E:211:ILE:HA	1.80	0.41
1:C:328:ARG:HD2	1:C:329:LEU:N	2.36	0.41
1:F:283:THR:HG22	1:F:283:THR:O	2.20	0.41
1:C:77:MET:O	1:C:79:ASP:N	2.53	0.41
1:D:316:VAL:HA	1:D:330:VAL:O	2.20	0.41
1:B:180:GLN:NE2	1:B:239:THR:HB	2.35	0.41
3:D:402:COA:H122	4:D:635:HOH:O	2.20	0.41
1:F:136:GLU:O	1:F:140:ARG:HB2	2.21	0.41
1:F:213:GLU:O	1:F:217:ILE:HG13	2.21	0.41
1:B:226:ASP:N	1:B:226:ASP:OD1	2.52	0.41

Continued on next page...

Continued from previous page...

Atom-1	Atom-2	Interatomic distance (Å)	Clash overlap (Å)
1:C:180:GLN:HG3	1:C:240:HIS:O	2.21	0.41
1:C:287:LYS:HA	1:C:288:PRO:HD2	1.91	0.41
1:C:308:ASP:CA	4:C:625:HOH:O	2.68	0.41
1:E:73:ASP:HA	1:E:74:PRO:HD2	1.85	0.41
1:E:137:GLN:NE2	1:E:143:TRP:HE1	2.16	0.41
1:F:178:THR:OG1	1:F:239:THR:HA	2.21	0.41
1:E:23:TYR:CZ	1:E:341:ALA:HA	2.55	0.41
1:E:73:ASP:OD1	1:E:75:LYS:HG2	2.21	0.41
1:D:252:LEU:HD12	1:D:252:LEU:N	2.36	0.41
3:D:402:COA:O5P	3:D:402:COA:H22	2.20	0.41
1:A:182:LEU:HG	1:A:244:THR:O	2.21	0.41
1:A:192:SER:HB2	1:B:182:LEU:HD13	2.03	0.41
1:C:96:GLU:OE1	1:C:113:HIS:HD2	2.03	0.41
1:C:119:VAL:HA	1:C:120:PRO:HD3	1.90	0.41
3:F:402:COA:O5P	3:F:402:COA:H22	2.20	0.41
1:C:126:LEU:HD11	1:C:160:ILE:HA	2.02	0.41
1:D:276:PRO:HB3	1:D:281:LEU:HD12	2.01	0.41
1:E:136:GLU:O	1:E:140:ARG:HB2	2.21	0.41
1:A:53:ARG:HE	1:A:55:GLN:NE2	2.19	0.40
1:C:309:ILE:O	1:C:312:MET:HB2	2.21	0.40
1:D:182:LEU:HD11	1:D:243:ALA:HA	2.04	0.40
1:E:13:LEU:HD12	1:E:85:SER:CB	2.50	0.40
1:E:252:LEU:HB2	1:E:329:LEU:HD21	1.99	0.40
1:E:119:VAL:HA	1:E:120:PRO:HD3	1.93	0.40
1:F:53:ARG:HG3	1:F:53:ARG:HH11	1.86	0.40
1:B:38:LEU:HD13	1:B:48:TYR:CD1	2.56	0.40
1:C:30:HIS:HA	4:C:631:HOH:O	2.21	0.40
1:D:136:GLU:O	1:D:140:ARG:HB2	2.21	0.40
1:E:75:LYS:HG2	1:E:75:LYS:H	1.60	0.40
1:E:77:MET:O	1:E:79:ASP:N	2.53	0.40
1:B:121:LEU:HD11	1:B:151:PRO:HA	2.03	0.40
1:C:53:ARG:HH21	1:C:55:GLN:HE22	1.70	0.40
1:C:165:ILE:HG12	1:C:265:VAL:HG13	2.04	0.40
1:D:13:LEU:HA	1:D:39:ALA:HB3	2.02	0.40
1:D:77:MET:C	1:D:79:ASP:H	2.25	0.40
1:D:275:GLU:N	1:D:276:PRO:CD	2.84	0.40
1:E:53:ARG:HE	1:E:55:GLN:HE21	1.67	0.40
3:F:402:COA:O1A	3:F:402:COA:O4A	2.39	0.40

All (1) symmetry-related close contacts are listed below. The label for Atom-2 includes the symmetry operator and encoded unit-cell translations to be applied.

Atom-1	Atom-2	Interatomic distance (Å)	Clash overlap (Å)
1:C:9:LYS:NZ	1:F:353:GLU:OE2[3_555]	2.01	0.19

5.3 Torsion angles [i](#)

5.3.1 Protein backbone [i](#)

In the following table, the Percentiles column shows the percent Ramachandran outliers of the chain as a percentile score with respect to all X-ray entries followed by that with respect to entries of similar resolution.

The Analysed column shows the number of residues for which the backbone conformation was analysed, and the total number of residues.

Mol	Chain	Analysed	Favoured	Allowed	Outliers	Percentiles	
1	A	352/359 (98%)	333 (95%)	15 (4%)	4 (1%)	14	15
1	B	352/359 (98%)	332 (94%)	17 (5%)	3 (1%)	17	20
1	C	352/359 (98%)	334 (95%)	14 (4%)	4 (1%)	14	15
1	D	352/359 (98%)	334 (95%)	15 (4%)	3 (1%)	17	20
1	E	351/359 (98%)	334 (95%)	14 (4%)	3 (1%)	17	20
1	F	351/359 (98%)	335 (95%)	12 (3%)	4 (1%)	14	15
All	All	2110/2154 (98%)	2002 (95%)	87 (4%)	21 (1%)	15	17

All (21) Ramachandran outliers are listed below:

Mol	Chain	Res	Type
1	E	76	LEU
1	A	86	PRO
1	D	76	LEU
1	F	76	LEU
1	A	231	GLU
1	C	76	LEU
1	C	86	PRO
1	D	86	PRO
1	D	337	VAL
1	F	337	VAL
1	A	340	ALA
1	B	75	LYS
1	B	170	LYS
1	C	337	VAL
1	F	86	PRO

Continued on next page...

Continued from previous page...

Mol	Chain	Res	Type
1	B	86	PRO
1	F	78	ASP
1	E	337	VAL
1	A	337	VAL
1	C	211	ILE
1	E	86	PRO

5.3.2 Protein sidechains [i](#)

In the following table, the Percentiles column shows the percent sidechain outliers of the chain as a percentile score with respect to all X-ray entries followed by that with respect to entries of similar resolution.

The Analysed column shows the number of residues for which the sidechain conformation was analysed, and the total number of residues.

Mol	Chain	Analysed	Rotameric	Outliers	Percentiles	
1	A	297/302 (98%)	276 (93%)	21 (7%)	14	19
1	B	297/302 (98%)	276 (93%)	21 (7%)	14	19
1	C	297/302 (98%)	262 (88%)	35 (12%)	5	5
1	D	297/302 (98%)	261 (88%)	36 (12%)	5	5
1	E	296/302 (98%)	261 (88%)	35 (12%)	5	5
1	F	296/302 (98%)	261 (88%)	35 (12%)	5	5
All	All	1780/1812 (98%)	1597 (90%)	183 (10%)	7	8

All (183) residues with a non-rotameric sidechain are listed below:

Mol	Chain	Res	Type
1	A	6	ARG
1	A	29	ASN
1	A	34	LYS
1	A	51	VAL
1	A	55	GLN
1	A	62	LYS
1	A	64	ILE
1	A	74	PRO
1	A	75	LYS
1	A	78	ASP
1	A	87	LEU
1	A	131	ILE

Continued on next page...

Continued from previous page...

Mol	Chain	Res	Type
1	A	140	ARG
1	A	143	TRP
1	A	144	LYS
1	A	153	CYS
1	A	209	LYS
1	A	222	LYS
1	A	229	LYS
1	A	263	GLU
1	A	280	LYS
1	B	6	ARG
1	B	7	THR
1	B	50	GLU
1	B	55	GLN
1	B	62	LYS
1	B	68	GLU
1	B	78	ASP
1	B	79	ASP
1	B	87	LEU
1	B	98	GLN
1	B	112	ASP
1	B	140	ARG
1	B	143	TRP
1	B	211	ILE
1	B	255	SER
1	B	257	LYS
1	B	320	LYS
1	B	325	ARG
1	B	329	LEU
1	B	353	GLU
1	B	359	LYS
1	C	7	THR
1	C	9	LYS
1	C	34	LYS
1	C	41	LYS
1	C	43	SER
1	C	55	GLN
1	C	62	LYS
1	C	64	ILE
1	C	75	LYS
1	C	76	LEU
1	C	79	ASP
1	C	87	LEU

Continued on next page...

Continued from previous page...

Mol	Chain	Res	Type
1	C	89	GLN
1	C	98	GLN
1	C	132	SER
1	C	136	GLU
1	C	139	LYS
1	C	143	TRP
1	C	144	LYS
1	C	209	LYS
1	C	211	ILE
1	C	229	LYS
1	C	230	LEU
1	C	231	GLU
1	C	257	LYS
1	C	259	GLU
1	C	263	GLU
1	C	273	ARG
1	C	287	LYS
1	C	319	LEU
1	C	320	LYS
1	C	329	LEU
1	C	353	GLU
1	C	358	GLU
1	C	359	LYS
1	D	6	ARG
1	D	7	THR
1	D	9	LYS
1	D	34	LYS
1	D	41	LYS
1	D	43	SER
1	D	55	GLN
1	D	62	LYS
1	D	64	ILE
1	D	75	LYS
1	D	76	LEU
1	D	79	ASP
1	D	87	LEU
1	D	89	GLN
1	D	98	GLN
1	D	132	SER
1	D	136	GLU
1	D	139	LYS
1	D	143	TRP

Continued on next page...

Continued from previous page...

Mol	Chain	Res	Type
1	D	144	LYS
1	D	209	LYS
1	D	211	ILE
1	D	219	SER
1	D	228	PRO
1	D	229	LYS
1	D	231	GLU
1	D	257	LYS
1	D	263	GLU
1	D	273	ARG
1	D	287	LYS
1	D	319	LEU
1	D	320	LYS
1	D	329	LEU
1	D	353	GLU
1	D	358	GLU
1	D	359	LYS
1	E	7	THR
1	E	9	LYS
1	E	34	LYS
1	E	41	LYS
1	E	43	SER
1	E	55	GLN
1	E	62	LYS
1	E	64	ILE
1	E	75	LYS
1	E	76	LEU
1	E	78	ASP
1	E	79	ASP
1	E	87	LEU
1	E	89	GLN
1	E	98	GLN
1	E	132	SER
1	E	136	GLU
1	E	139	LYS
1	E	143	TRP
1	E	144	LYS
1	E	153	CYS
1	E	209	LYS
1	E	211	ILE
1	E	228	PRO
1	E	229	LYS

Continued on next page...

Continued from previous page...

Mol	Chain	Res	Type
1	E	231	GLU
1	E	257	LYS
1	E	263	GLU
1	E	273	ARG
1	E	287	LYS
1	E	319	LEU
1	E	320	LYS
1	E	329	LEU
1	E	353	GLU
1	E	359	LYS
1	F	7	THR
1	F	9	LYS
1	F	34	LYS
1	F	41	LYS
1	F	43	SER
1	F	55	GLN
1	F	62	LYS
1	F	64	ILE
1	F	75	LYS
1	F	76	LEU
1	F	79	ASP
1	F	87	LEU
1	F	89	GLN
1	F	98	GLN
1	F	136	GLU
1	F	139	LYS
1	F	143	TRP
1	F	144	LYS
1	F	209	LYS
1	F	211	ILE
1	F	229	LYS
1	F	230	LEU
1	F	231	GLU
1	F	257	LYS
1	F	259	GLU
1	F	263	GLU
1	F	273	ARG
1	F	280	LYS
1	F	287	LYS
1	F	319	LEU
1	F	320	LYS
1	F	329	LEU

Continued on next page...

Continued from previous page...

Mol	Chain	Res	Type
1	F	353	GLU
1	F	358	GLU
1	F	359	LYS

Sometimes sidechains can be flipped to improve hydrogen bonding and reduce clashes. All (42) such sidechains are listed below:

Mol	Chain	Res	Type
1	A	55	GLN
1	A	137	GLN
1	A	180	GLN
1	A	293	ASN
1	A	321	GLN
1	B	55	GLN
1	B	59	GLN
1	B	129	HIS
1	B	137	GLN
1	B	180	GLN
1	B	293	ASN
1	B	321	GLN
1	C	55	GLN
1	C	89	GLN
1	C	129	HIS
1	C	137	GLN
1	C	180	GLN
1	C	293	ASN
1	C	321	GLN
1	D	55	GLN
1	D	89	GLN
1	D	129	HIS
1	D	137	GLN
1	D	180	GLN
1	D	293	ASN
1	D	321	GLN
1	E	55	GLN
1	E	89	GLN
1	E	129	HIS
1	E	137	GLN
1	E	180	GLN
1	E	246	HIS
1	E	293	ASN
1	E	321	GLN
1	F	55	GLN

Continued on next page...

Continued from previous page...

Mol	Chain	Res	Type
1	F	89	GLN
1	F	129	HIS
1	F	137	GLN
1	F	180	GLN
1	F	246	HIS
1	F	293	ASN
1	F	321	GLN

5.3.3 RNA [i](#)

There are no RNA molecules in this entry.

5.4 Non-standard residues in protein, DNA, RNA chains [i](#)

There are no non-standard protein/DNA/RNA residues in this entry.

5.5 Carbohydrates [i](#)

There are no monosaccharides in this entry.

5.6 Ligand geometry [i](#)

Of 12 ligands modelled in this entry, 6 are monoatomic - leaving 6 for Mogul analysis.

In the following table, the Counts columns list the number of bonds (or angles) for which Mogul statistics could be retrieved, the number of bonds (or angles) that are observed in the model and the number of bonds (or angles) that are defined in the Chemical Component Dictionary. The Link column lists molecule types, if any, to which the group is linked. The Z score for a bond length (or angle) is the number of standard deviations the observed value is removed from the expected value. A bond length (or angle) with $|Z| > 2$ is considered an outlier worth inspection. RMSZ is the root-mean-square of all Z scores of the bond lengths (or angles).

Mol	Type	Chain	Res	Link	Bond lengths			Bond angles		
					Counts	RMSZ	# Z > 2	Counts	RMSZ	# Z > 2
3	COA	B	402	2	41,50,50	1.25	4 (9%)	52,75,75	3.41	25 (48%)
3	COA	C	402	2	41,50,50	0.91	2 (4%)	52,75,75	2.16	11 (21%)
3	COA	D	402	2	41,50,50	0.83	0	52,75,75	1.66	8 (15%)
3	COA	F	402	2	41,50,50	0.85	1 (2%)	52,75,75	1.82	8 (15%)
3	COA	A	402	2	41,50,50	1.65	11 (26%)	52,75,75	3.23	22 (42%)
3	COA	E	402	2	41,50,50	0.93	2 (4%)	52,75,75	1.97	11 (21%)

In the following table, the Chirals column lists the number of chiral outliers, the number of chiral centers analysed, the number of these observed in the model and the number defined in the Chemical Component Dictionary. Similar counts are reported in the Torsion and Rings columns. '-' means no outliers of that kind were identified.

Mol	Type	Chain	Res	Link	Chirals	Torsions	Rings
3	COA	B	402	2	-	11/44/64/64	0/3/3/3
3	COA	C	402	2	-	5/44/64/64	0/3/3/3
3	COA	D	402	2	-	4/44/64/64	0/3/3/3
3	COA	F	402	2	-	3/44/64/64	0/3/3/3
3	COA	A	402	2	-	5/44/64/64	0/3/3/3
3	COA	E	402	2	-	9/44/64/64	0/3/3/3

All (20) bond length outliers are listed below:

Mol	Chain	Res	Type	Atoms	Z	Observed(Å)	Ideal(Å)
3	A	402	COA	C4A-N3A	-3.57	1.30	1.35
3	A	402	COA	C9P-N8P	3.37	1.41	1.33
3	A	402	COA	O4B-C1B	-2.93	1.37	1.41
3	A	402	COA	C2A-N3A	2.88	1.36	1.32
3	F	402	COA	O4B-C1B	2.84	1.45	1.41
3	A	402	COA	OAP-CAP	2.71	1.47	1.42
3	B	402	COA	CEP-CBP	2.60	1.59	1.53
3	A	402	COA	C7P-C6P	2.55	1.59	1.51
3	B	402	COA	C5P-N4P	2.54	1.39	1.33
3	A	402	COA	C5A-N7A	-2.48	1.30	1.39
3	A	402	COA	O6A-CCP	-2.31	1.36	1.43
3	C	402	COA	OAP-CAP	2.28	1.46	1.42
3	A	402	COA	C2B-C1B	2.24	1.57	1.53
3	E	402	COA	O4B-C1B	2.16	1.44	1.41
3	E	402	COA	P3B-O3B	-2.14	1.55	1.59
3	B	402	COA	C2B-C1B	2.11	1.57	1.53
3	A	402	COA	O5P-C5P	2.11	1.27	1.23
3	B	402	COA	C2A-N1A	-2.10	1.30	1.33
3	C	402	COA	C2A-N3A	2.08	1.35	1.32
3	A	402	COA	P3B-O9A	-2.08	1.46	1.54

All (85) bond angle outliers are listed below:

Mol	Chain	Res	Type	Atoms	Z	Observed(°)	Ideal(°)
3	A	402	COA	C7P-N8P-C9P	8.58	137.89	122.59
3	B	402	COA	CDP-CBP-CAP	8.19	123.03	108.82
3	B	402	COA	C6P-C7P-N8P	-7.86	96.02	111.90

Continued on next page...

Continued from previous page...

Mol	Chain	Res	Type	Atoms	Z	Observed(°)	Ideal(°)
3	A	402	COA	CDP-CBP-CCP	7.44	120.36	108.23
3	F	402	COA	C6P-C7P-N8P	-7.28	97.20	111.90
3	B	402	COA	CEP-CBP-CCP	7.26	120.08	108.23
3	C	402	COA	CDP-CBP-CCP	-7.20	96.48	108.23
3	E	402	COA	C6P-C7P-N8P	-7.18	97.41	111.90
3	C	402	COA	C6P-C7P-N8P	-7.03	97.71	111.90
3	B	402	COA	O5P-C5P-C6P	-6.93	109.33	122.02
3	B	402	COA	CDP-CBP-CCP	6.71	119.18	108.23
3	A	402	COA	CEP-CBP-CCP	6.68	119.12	108.23
3	A	402	COA	O6A-CCP-CBP	-6.65	99.86	110.55
3	B	402	COA	CEP-CBP-CAP	6.48	120.05	108.82
3	B	402	COA	CEP-CBP-CDP	-6.34	96.25	109.17
3	D	402	COA	C6P-C7P-N8P	-6.23	99.32	111.90
3	A	402	COA	O9A-P3B-O8A	5.95	130.39	107.64
3	A	402	COA	CEP-CBP-CDP	-5.72	97.50	109.17
3	A	402	COA	N3A-C2A-N1A	-5.68	119.80	128.68
3	B	402	COA	C6P-C5P-N4P	5.66	125.95	116.42
3	C	402	COA	CEP-CBP-CCP	5.23	116.76	108.23
3	A	402	COA	C2P-C3P-N4P	-5.10	100.65	112.31
3	A	402	COA	CEP-CBP-CAP	5.08	117.62	108.82
3	B	402	COA	O9A-P3B-O8A	4.87	126.25	107.64
3	D	402	COA	N3A-C2A-N1A	-4.80	121.17	128.68
3	F	402	COA	N3A-C2A-N1A	-4.80	121.18	128.68
3	C	402	COA	C7P-N8P-C9P	4.61	130.82	122.59
3	B	402	COA	C7P-C6P-C5P	4.55	119.93	112.36
3	A	402	COA	OAP-CAP-CBP	-4.51	99.63	110.25
3	B	402	COA	N3A-C2A-N1A	-4.47	121.69	128.68
3	E	402	COA	C2P-C3P-N4P	-4.34	102.39	112.31
3	E	402	COA	N3A-C2A-N1A	-4.28	121.99	128.68
3	D	402	COA	C2P-C3P-N4P	-4.21	102.67	112.31
3	E	402	COA	CDP-CBP-CCP	-4.21	101.36	108.23
3	B	402	COA	O6A-CCP-CBP	-4.16	103.86	110.55
3	C	402	COA	N3A-C2A-N1A	-4.07	122.32	128.68
3	A	402	COA	C6P-C7P-N8P	-4.01	103.80	111.90
3	B	402	COA	C3P-N4P-C5P	3.96	130.19	122.84
3	B	402	COA	O4B-C4B-C3B	3.94	113.31	104.87
3	F	402	COA	C2P-C3P-N4P	-3.81	103.60	112.31
3	A	402	COA	CDP-CBP-CAP	3.73	115.29	108.82
3	A	402	COA	O5B-C5B-C4B	-3.69	96.30	108.99
3	E	402	COA	C7P-N8P-C9P	3.67	129.13	122.59
3	B	402	COA	O6A-P2A-O4A	-3.65	94.82	109.07
3	E	402	COA	O5P-C5P-C6P	-3.58	115.47	122.02

Continued on next page...

Continued from previous page...

Mol	Chain	Res	Type	Atoms	Z	Observed(°)	Ideal(°)
3	F	402	COA	P2A-O3A-P1A	-3.58	120.56	132.83
3	C	402	COA	C2P-C3P-N4P	-3.57	104.16	112.31
3	A	402	COA	P2A-O3A-P1A	-3.47	120.93	132.83
3	E	402	COA	CDP-CBP-CAP	3.40	114.71	108.82
3	E	402	COA	P2A-O3A-P1A	-3.33	121.38	132.83
3	A	402	COA	O9P-C9P-N8P	3.22	129.91	122.99
3	A	402	COA	O5B-P1A-O1A	-3.10	96.97	109.07
3	B	402	COA	C7P-N8P-C9P	2.87	127.71	122.59
3	B	402	COA	P2A-O3A-P1A	-2.86	123.01	132.83
3	A	402	COA	C4A-C5A-N7A	-2.83	106.45	109.40
3	B	402	COA	C5B-C4B-C3B	-2.83	105.02	114.40
3	B	402	COA	P1A-O5B-C5B	-2.74	105.59	121.68
3	C	402	COA	C7P-C6P-C5P	2.73	116.90	112.36
3	D	402	COA	O6A-CCP-CBP	2.69	114.88	110.55
3	E	402	COA	CEP-CBP-CCP	2.59	112.45	108.23
3	F	402	COA	O6A-CCP-CBP	2.57	114.68	110.55
3	B	402	COA	O5B-C5B-C4B	2.57	117.84	108.99
3	D	402	COA	O5P-C5P-C6P	-2.56	117.34	122.02
3	B	402	COA	O2A-P1A-O5B	2.51	119.42	107.75
3	B	402	COA	C2B-C3B-C4B	-2.51	98.78	103.22
3	C	402	COA	CDP-CBP-CAP	2.44	113.05	108.82
3	A	402	COA	O5A-P2A-O6A	-2.42	96.52	107.75
3	C	402	COA	CEP-CBP-CDP	2.39	114.04	109.17
3	E	402	COA	C6P-C5P-N4P	2.39	120.44	116.42
3	F	402	COA	CDP-CBP-CCP	-2.37	104.36	108.23
3	A	402	COA	O4B-C4B-C5B	-2.36	101.61	109.37
3	C	402	COA	P2A-O3A-P1A	-2.30	124.93	132.83
3	F	402	COA	CEP-CBP-CCP	2.30	111.98	108.23
3	C	402	COA	C4A-C5A-N7A	-2.29	107.01	109.40
3	D	402	COA	P2A-O3A-P1A	-2.28	125.00	132.83
3	B	402	COA	O3B-C3B-C2B	-2.26	103.49	111.68
3	A	402	COA	O2B-C2B-C1B	2.26	119.18	110.85
3	D	402	COA	C7P-N8P-C9P	2.22	126.54	122.59
3	A	402	COA	C5B-C4B-C3B	2.22	121.75	114.40
3	F	402	COA	C7P-N8P-C9P	2.18	126.48	122.59
3	E	402	COA	O3B-C3B-C2B	-2.13	103.96	111.68
3	A	402	COA	C3P-N4P-C5P	2.11	126.76	122.84
3	D	402	COA	O8A-P3B-O7A	2.10	118.91	110.68
3	B	402	COA	O9A-P3B-O7A	-2.07	102.57	110.68
3	B	402	COA	O5B-P1A-O1A	2.06	117.13	109.07

There are no chirality outliers.

All (37) torsion outliers are listed below:

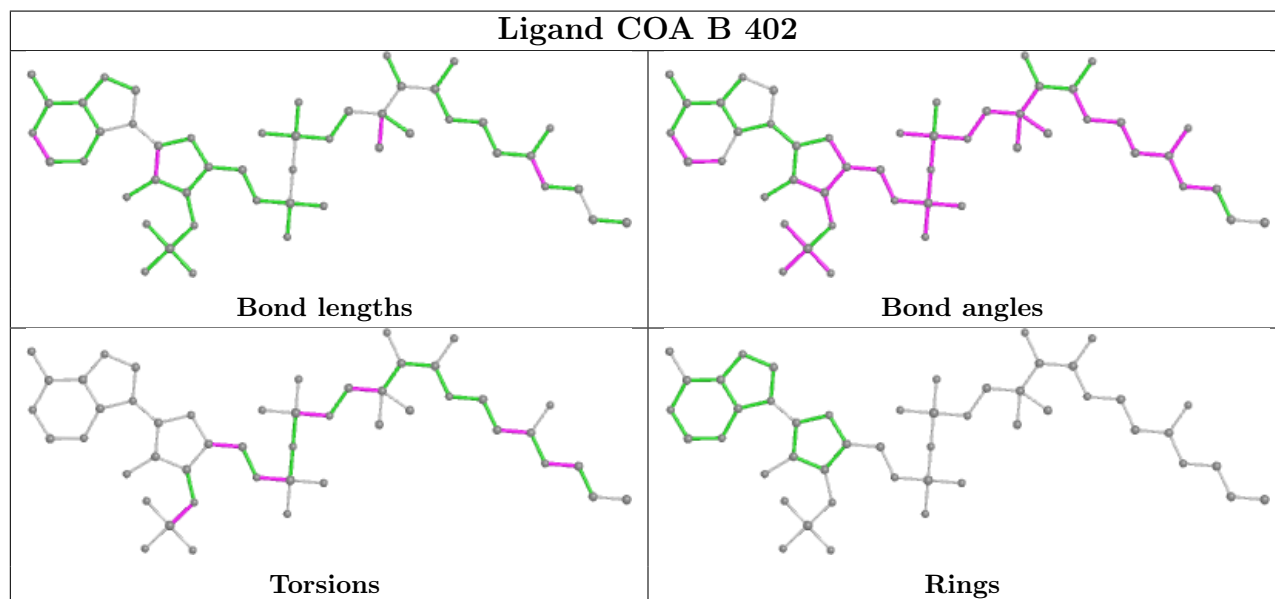
Mol	Chain	Res	Type	Atoms
3	A	402	COA	C3B-O3B-P3B-O8A
3	A	402	COA	C5B-O5B-P1A-O1A
3	A	402	COA	C5B-O5B-P1A-O3A
3	B	402	COA	C3B-O3B-P3B-O8A
3	B	402	COA	O4B-C4B-C5B-O5B
3	B	402	COA	C5B-O5B-P1A-O1A
3	B	402	COA	C5B-O5B-P1A-O2A
3	B	402	COA	O5P-C5P-C6P-C7P
3	B	402	COA	N4P-C5P-C6P-C7P
3	B	402	COA	C2P-C3P-N4P-C5P
3	C	402	COA	N8P-C9P-CAP-OAP
3	D	402	COA	N8P-C9P-CAP-OAP
3	E	402	COA	N8P-C9P-CAP-OAP
3	E	402	COA	C2P-C3P-N4P-C5P
3	B	402	COA	C3B-C4B-C5B-O5B
3	C	402	COA	C5P-C6P-C7P-N8P
3	D	402	COA	C5P-C6P-C7P-N8P
3	F	402	COA	C5P-C6P-C7P-N8P
3	C	402	COA	O9P-C9P-CAP-OAP
3	D	402	COA	O9P-C9P-CAP-OAP
3	E	402	COA	O9P-C9P-CAP-OAP
3	E	402	COA	C5P-C6P-C7P-N8P
3	B	402	COA	C5B-O5B-P1A-O3A
3	E	402	COA	C3B-O3B-P3B-O8A
3	A	402	COA	C5B-O5B-P1A-O2A
3	E	402	COA	O4B-C4B-C5B-O5B
3	B	402	COA	CDP-CBP-CCP-O6A
3	F	402	COA	O9P-C9P-CAP-OAP
3	C	402	COA	C3B-O3B-P3B-O7A
3	F	402	COA	N8P-C9P-CAP-OAP
3	E	402	COA	N4P-C5P-C6P-C7P
3	A	402	COA	C3B-O3B-P3B-O9A
3	D	402	COA	C3B-O3B-P3B-O9A
3	E	402	COA	C3B-O3B-P3B-O9A
3	B	402	COA	CCP-O6A-P2A-O4A
3	C	402	COA	O5P-C5P-C6P-C7P
3	E	402	COA	O5P-C5P-C6P-C7P

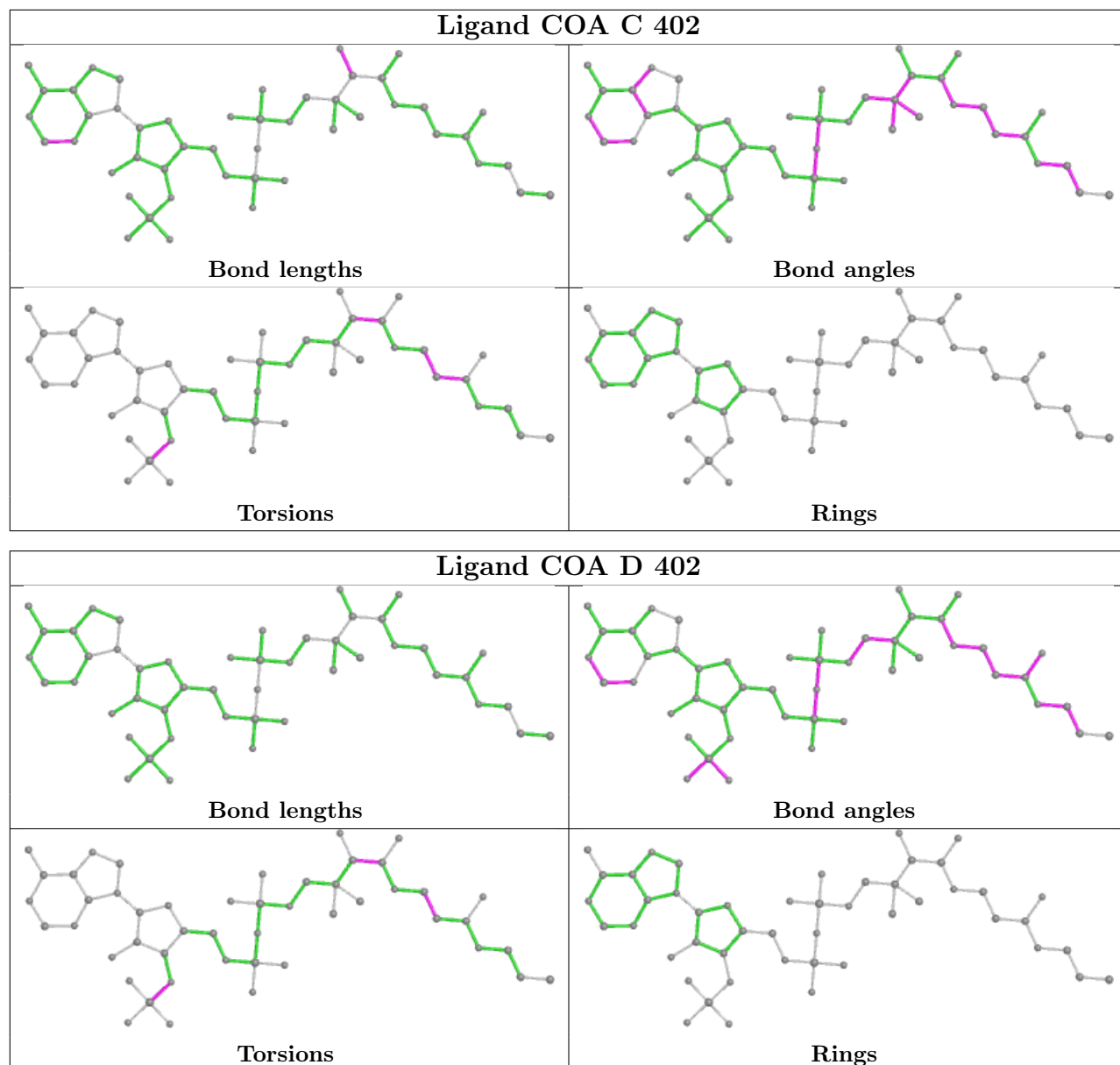
There are no ring outliers.

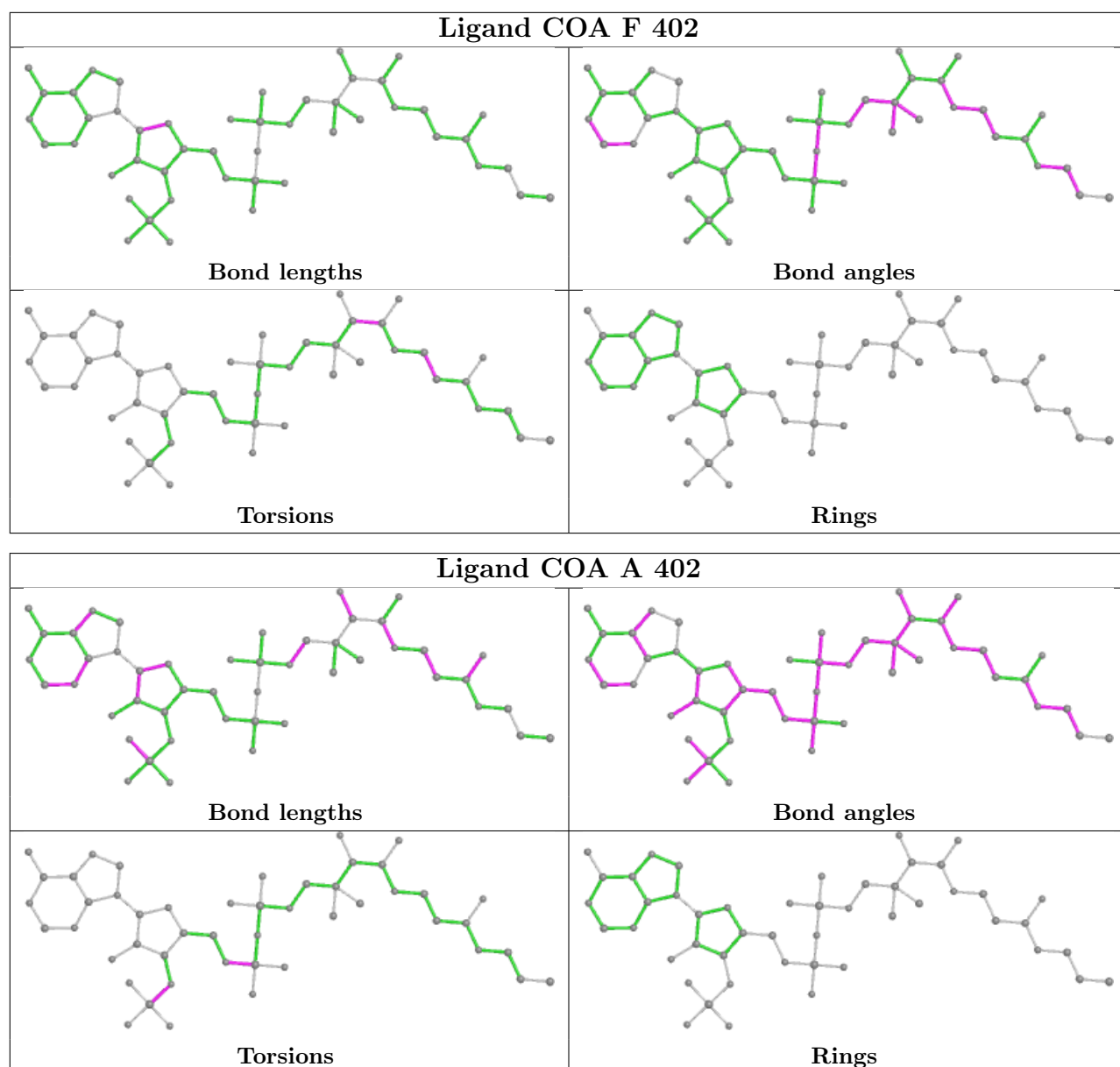
6 monomers are involved in 12 short contacts:

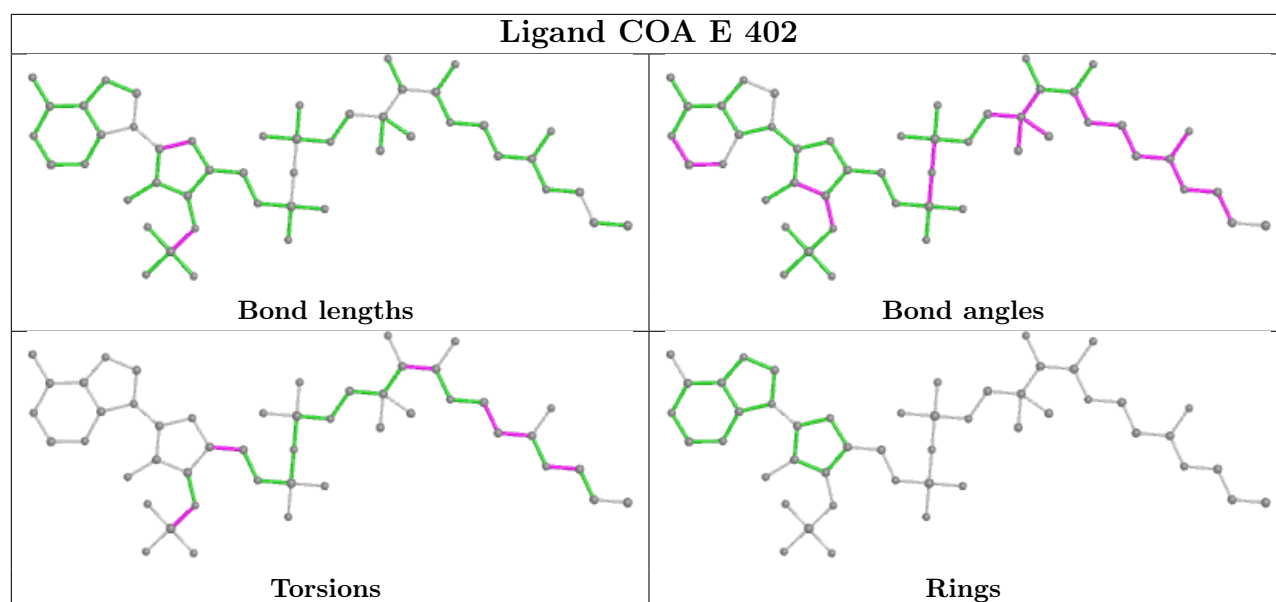
Mol	Chain	Res	Type	Clashes	Symm-Clashes
3	B	402	COA	3	0
3	C	402	COA	1	0
3	D	402	COA	4	0
3	F	402	COA	2	0
3	A	402	COA	1	0
3	E	402	COA	1	0

The following is a two-dimensional graphical depiction of Mogul quality analysis of bond lengths, bond angles, torsion angles, and ring geometry for all instances of the Ligand of Interest. In addition, ligands with molecular weight > 250 and outliers as shown on the validation Tables will also be included. For torsion angles, if less than 5% of the Mogul distribution of torsion angles is within 10 degrees of the torsion angle in question, then that torsion angle is considered an outlier. Any bond that is central to one or more torsion angles identified as an outlier by Mogul will be highlighted in the graph. For rings, the root-mean-square deviation (RMSD) between the ring in question and similar rings identified by Mogul is calculated over all ring torsion angles. If the average RMSD is greater than 60 degrees and the minimal RMSD between the ring in question and any Mogul-identified rings is also greater than 60 degrees, then that ring is considered an outlier. The outliers are highlighted in purple. The color gray indicates Mogul did not find sufficient equivalents in the CSD to analyse the geometry.









5.7 Other polymers [\(i\)](#)

There are no such residues in this entry.

5.8 Polymer linkage issues [\(i\)](#)

There are no chain breaks in this entry.

6 Fit of model and data

6.1 Protein, DNA and RNA chains

In the following table, the column labelled ‘#RSRZ > 2’ contains the number (and percentage) of RSRZ outliers, followed by percent RSRZ outliers for the chain as percentile scores relative to all X-ray entries and entries of similar resolution. The OWAB column contains the minimum, median, 95th percentile and maximum values of the occupancy-weighted average B-factor per residue. The column labelled ‘Q < 0.9’ lists the number of (and percentage) of residues with an average occupancy less than 0.9.

Mol	Chain	Analysed	<RSRZ>	#RSRZ>2	OWAB(Å ²)	Q<0.9
1	A	354/359 (98%)	-0.12	5 (1%) 75 80	11, 29, 59, 105	0
1	B	354/359 (98%)	-0.09	4 (1%) 80 85	14, 34, 63, 94	0
1	C	354/359 (98%)	0.89	61 (17%) 1 1	53, 87, 132, 173	0
1	D	354/359 (98%)	1.92	134 (37%) 0 0	64, 116, 187, 220	0
1	E	353/359 (98%)	1.12	77 (21%) 0 1	53, 98, 162, 193	0
1	F	353/359 (98%)	1.28	98 (27%) 0 0	61, 114, 181, 216	0
All	All	2122/2154 (98%)	0.83	379 (17%) 1 1	11, 84, 164, 220	0

All (379) RSRZ outliers are listed below:

Mol	Chain	Res	Type	RSRZ
1	D	84	PHE	10.8
1	D	94	PRO	9.3
1	D	65	ALA	8.8
1	D	344	GLY	8.7
1	D	67	MET	8.6
1	D	107	ILE	8.4
1	D	6	ARG	8.2
1	D	78	ASP	7.8
1	E	230	LEU	7.8
1	D	23	TYR	7.4
1	F	229	LYS	7.3
1	D	343	GLY	7.3
1	D	359	LYS	7.2
1	D	64	ILE	6.9
1	D	345	ILE	6.9
1	F	145	GLY	6.7
1	D	31	PRO	6.6
1	D	44	VAL	6.5
1	D	139	LYS	6.3

Continued on next page...

Continued from previous page...

Mol	Chain	Res	Type	RSRZ
1	D	341	ALA	6.3
1	C	140	ARG	6.2
1	E	261	ALA	6.0
1	D	72	THR	5.9
1	D	109	ASN	5.8
1	D	8	LEU	5.7
1	C	225	VAL	5.6
1	D	148	VAL	5.6
1	D	83	ILE	5.5
1	D	85	SER	5.3
1	E	308	ASP	5.3
1	D	86	PRO	5.2
1	D	145	GLY	5.2
1	F	40	GLY	5.1
1	C	276	PRO	5.1
1	F	140	ARG	5.1
1	D	140	ARG	5.0
1	F	139	LYS	4.9
1	F	64	ILE	4.9
1	F	188	PRO	4.9
1	C	359	LYS	4.9
1	E	271	ASN	4.8
1	D	42	GLY	4.7
1	C	144	LYS	4.7
1	D	40	GLY	4.7
1	F	68	GLU	4.7
1	D	11	ALA	4.6
1	D	353	GLU	4.6
1	C	139	LYS	4.6
1	E	262	ALA	4.5
1	D	307	GLY	4.5
1	F	46	LYS	4.5
1	F	103	GLY	4.5
1	D	13	LEU	4.5
1	D	340	ALA	4.4
1	C	142	GLU	4.4
1	E	171	MET	4.4
1	F	109	ASN	4.3
1	E	139	LYS	4.3
1	D	98	GLN	4.3
1	F	84	PHE	4.3
1	D	19	VAL	4.3

Continued on next page...

Continued from previous page...

Mol	Chain	Res	Type	RSRZ
1	D	14	GLY	4.3
1	D	91	ALA	4.2
1	D	81	ASP	4.2
1	E	339	GLY	4.2
1	E	170	LYS	4.2
1	E	155	ALA	4.2
1	D	280	LYS	4.2
1	F	75	LYS	4.2
1	D	108	SER	4.2
1	F	129	HIS	4.2
1	D	219	SER	4.1
1	F	19	VAL	4.1
1	E	258	GLU	4.1
1	D	73	ASP	4.1
1	D	225	VAL	4.1
1	D	12	ILE	4.1
1	C	286	SER	4.1
1	E	325	ARG	4.0
1	D	50	GLU	4.0
1	D	69	ILE	4.0
1	F	141	ARG	4.0
1	C	267	GLU	4.0
1	D	61	PRO	4.0
1	F	226	ASP	4.0
1	E	340	ALA	4.0
1	D	29	ASN	3.9
1	F	91	ALA	3.9
1	E	260	THR	3.9
1	D	45	GLY	3.9
1	E	117	PRO	3.9
1	D	218	LEU	3.9
1	D	336	THR	3.9
1	F	143	TRP	3.8
1	D	71	PRO	3.8
1	E	338	ARG	3.8
1	D	337	VAL	3.8
1	E	224	ASN	3.8
1	E	290	ILE	3.8
1	C	135	ASP	3.8
1	E	173	GLY	3.8
1	E	251	VAL	3.7
1	C	145	GLY	3.7

Continued on next page...

Continued from previous page...

Mol	Chain	Res	Type	RSRZ
1	F	37	TYR	3.7
1	F	95	VAL	3.7
1	D	75	LYS	3.7
1	F	144	LYS	3.7
1	C	101	LYS	3.7
1	F	227	GLU	3.7
1	E	169	TYR	3.7
1	F	132	SER	3.7
1	D	63	GLU	3.6
1	E	29	ASN	3.6
1	F	66	ASP	3.6
1	F	359	LYS	3.6
1	C	62	LYS	3.6
1	E	150	THR	3.6
1	D	46	LYS	3.5
1	D	274	GLY	3.5
1	E	140	ARG	3.5
1	D	93	GLY	3.5
1	F	63	GLU	3.5
1	E	232	ASP	3.5
1	C	249	TYR	3.5
1	E	284	ALA	3.5
1	D	208	ALA	3.4
1	D	338	ARG	3.4
1	D	215	PHE	3.4
1	E	64	ILE	3.4
1	F	307	GLY	3.4
1	D	10	ALA	3.4
1	C	6	ARG	3.4
1	F	208	ALA	3.4
1	F	61	PRO	3.3
1	E	156	GLN	3.3
1	E	321	GLN	3.3
1	F	214	ILE	3.3
1	D	135	ASP	3.3
1	C	261	ALA	3.3
1	D	176	ILE	3.3
1	F	344	GLY	3.3
1	C	75	LYS	3.3
1	D	82	ILE	3.3
1	D	251	VAL	3.3
1	F	65	ALA	3.3

Continued on next page...

Continued from previous page...

Mol	Chain	Res	Type	RSRZ
1	C	117	PRO	3.3
1	E	225	VAL	3.3
1	E	324	LYS	3.3
1	F	112	ASP	3.3
1	C	281	LEU	3.2
1	D	276	PRO	3.2
1	C	143	TRP	3.2
1	F	42	GLY	3.2
1	D	129	HIS	3.2
1	A	6	ARG	3.2
1	E	107	ILE	3.2
1	C	340	ALA	3.2
1	F	86	PRO	3.2
1	F	73	ASP	3.2
1	F	101	LYS	3.2
1	D	60	VAL	3.2
1	D	339	GLY	3.2
1	D	47	PRO	3.1
1	D	49	GLY	3.1
1	D	252	LEU	3.1
1	D	351	LEU	3.1
1	E	129	HIS	3.1
1	D	35	PRO	3.1
1	D	20	GLY	3.1
1	E	249	TYR	3.1
1	F	187	TYR	3.1
1	E	248	HIS	3.1
1	D	43	SER	3.1
1	D	150	THR	3.1
1	F	115	PHE	3.1
1	F	52	VAL	3.1
1	F	232	ASP	3.1
1	D	62	LYS	3.1
1	E	286	SER	3.0
1	F	9	LYS	3.0
1	D	281	LEU	3.0
1	D	358	GLU	3.0
1	F	151	PRO	3.0
1	F	118	ASP	3.0
1	D	48	TYR	3.0
1	D	133	LEU	3.0
1	F	156	GLN	3.0

Continued on next page...

Continued from previous page...

Mol	Chain	Res	Type	RSRZ
1	F	258	GLU	3.0
1	C	19	VAL	3.0
1	C	271	ASN	2.9
1	D	308	ASP	2.9
1	D	333	ILE	2.9
1	C	308	ASP	2.9
1	D	203	GLY	2.9
1	D	112	ASP	2.9
1	D	212	LYS	2.9
1	D	342	GLY	2.9
1	C	252	LEU	2.9
1	D	122	LEU	2.9
1	D	100	ALA	2.9
1	C	141	ARG	2.9
1	E	106	VAL	2.9
1	C	358	GLU	2.9
1	F	142	GLU	2.9
1	D	175	PHE	2.8
1	C	159	ALA	2.8
1	F	31	PRO	2.8
1	D	136	GLU	2.8
1	D	177	THR	2.8
1	D	106	VAL	2.8
1	C	262	ALA	2.8
1	E	179	ILE	2.8
1	D	146	PHE	2.8
1	C	269	LEU	2.8
1	E	31	PRO	2.7
1	E	135	ASP	2.7
1	F	233	VAL	2.7
1	C	278	ASP	2.7
1	E	109	ASN	2.7
1	D	144	LYS	2.7
1	F	43	SER	2.7
1	D	15	ALA	2.7
1	C	84	PHE	2.7
1	C	280	LYS	2.7
1	E	264	LYS	2.7
1	E	178	THR	2.7
1	E	227	GLU	2.6
1	D	348	ALA	2.6
1	E	341	ALA	2.6

Continued on next page...

Continued from previous page...

Mol	Chain	Res	Type	RSRZ
1	C	177	THR	2.6
1	D	38	LEU	2.6
1	D	52	VAL	2.6
1	E	252	LEU	2.6
1	F	62	LYS	2.6
1	D	334	HIS	2.6
1	F	49	GLY	2.6
1	D	156	GLN	2.6
1	E	259	GLU	2.6
1	C	44	VAL	2.6
1	E	233	VAL	2.6
1	E	159	ALA	2.6
1	C	259	GLU	2.6
1	D	22	GLU	2.6
1	E	32	TYR	2.6
1	F	159	ALA	2.6
1	C	118	ASP	2.6
1	F	231	GLU	2.6
1	F	353	GLU	2.6
1	F	41	LYS	2.6
1	C	229	LYS	2.6
1	C	257	LYS	2.6
1	C	251	VAL	2.5
1	C	226	ASP	2.5
1	E	294	GLU	2.5
1	D	18	LEU	2.5
1	E	30	HIS	2.5
1	F	257	LYS	2.5
1	D	7	THR	2.5
1	E	268	THR	2.5
1	E	62	LYS	2.5
1	F	155	ALA	2.5
1	A	19	VAL	2.5
1	D	32	TYR	2.5
1	E	310	PRO	2.5
1	C	343	GLY	2.5
1	C	258	GLU	2.5
1	E	358	GLU	2.5
1	D	90	GLY	2.5
1	E	295	ASP	2.5
1	D	211	ILE	2.4
1	E	217	ILE	2.4

Continued on next page...

Continued from previous page...

Mol	Chain	Res	Type	RSRZ
1	D	246	HIS	2.4
1	F	203	GLY	2.4
1	F	150	THR	2.4
1	F	325	ARG	2.4
1	C	321	GLN	2.4
1	F	228	PRO	2.4
1	F	69	ILE	2.4
1	F	160	ILE	2.4
1	D	115	PHE	2.4
1	E	283	THR	2.4
1	D	214	ILE	2.4
1	C	7	THR	2.4
1	F	154	THR	2.4
1	F	89	GLN	2.4
1	F	136	GLU	2.4
1	F	146	PHE	2.4
1	F	175	PHE	2.4
1	F	225	VAL	2.4
1	C	158	ALA	2.3
1	E	320	LYS	2.3
1	E	123	VAL	2.3
1	F	92	ALA	2.3
1	F	230	LEU	2.3
1	D	66	ASP	2.3
1	D	99	PHE	2.3
1	E	277	GLN	2.3
1	F	107	ILE	2.3
1	D	278	ASP	2.3
1	D	187	TYR	2.3
1	F	252	LEU	2.3
1	F	80	VAL	2.3
1	F	114	ARG	2.3
1	D	174	ALA	2.3
1	D	97	GLU	2.2
1	C	171	MET	2.2
1	A	84	PHE	2.2
1	C	265	VAL	2.2
1	D	21	ILE	2.2
1	F	158	ALA	2.2
1	E	307	GLY	2.2
1	E	153	CYS	2.2
1	F	104	PHE	2.2

Continued on next page...

Continued from previous page...

Mol	Chain	Res	Type	RSRZ
1	E	7	THR	2.2
1	C	325	ARG	2.2
1	B	153	CYS	2.2
1	F	79	ASP	2.2
1	F	333	ILE	2.2
1	E	138	ARG	2.2
1	C	123	VAL	2.2
1	F	205	GLY	2.2
1	D	347	ALA	2.2
1	F	354	LYS	2.2
1	C	344	GLY	2.2
1	E	118	ASP	2.2
1	C	352	VAL	2.2
1	F	219	SER	2.2
1	E	19	VAL	2.1
1	C	175	PHE	2.1
1	D	142	GLU	2.1
1	A	345	ILE	2.1
1	C	294	GLU	2.1
1	F	340	ALA	2.1
1	E	34	LYS	2.1
1	F	90	GLY	2.1
1	C	264	LYS	2.1
1	F	72	THR	2.1
1	E	122	LEU	2.1
1	F	157	GLY	2.1
1	C	164	ALA	2.1
1	E	314	VAL	2.1
1	D	117	PRO	2.1
1	D	132	SER	2.1
1	E	58	GLY	2.1
1	F	339	GLY	2.1
1	C	76	LEU	2.1
1	E	231	GLU	2.1
1	D	92	ALA	2.1
1	C	316	VAL	2.1
1	F	251	VAL	2.1
1	E	163	GLY	2.1
1	D	27	LEU	2.1
1	F	204	ASP	2.1
1	C	293	ASN	2.1
1	F	29	ASN	2.1

Continued on next page...

Continued from previous page...

Mol	Chain	Res	Type	RSRZ
1	D	229	LYS	2.1
1	D	80	VAL	2.1
1	D	95	VAL	2.1
1	B	162	LEU	2.0
1	D	141	ARG	2.0
1	A	314	VAL	2.0
1	F	47	PRO	2.0
1	F	88	PRO	2.0
1	D	54	TRP	2.0
1	E	226	ASP	2.0
1	F	337	VAL	2.0
1	C	23	TYR	2.0
1	D	121	LEU	2.0
1	C	232	ASP	2.0
1	F	280	LYS	2.0
1	B	107	ILE	2.0
1	B	252	LEU	2.0
1	E	267	GLU	2.0
1	E	333	ILE	2.0
1	F	358	GLU	2.0
1	D	26	MET	2.0
1	F	173	GLY	2.0
1	D	232	ASP	2.0
1	D	257	LYS	2.0

6.2 Non-standard residues in protein, DNA, RNA chains [i](#)

There are no non-standard protein/DNA/RNA residues in this entry.

6.3 Carbohydrates [i](#)

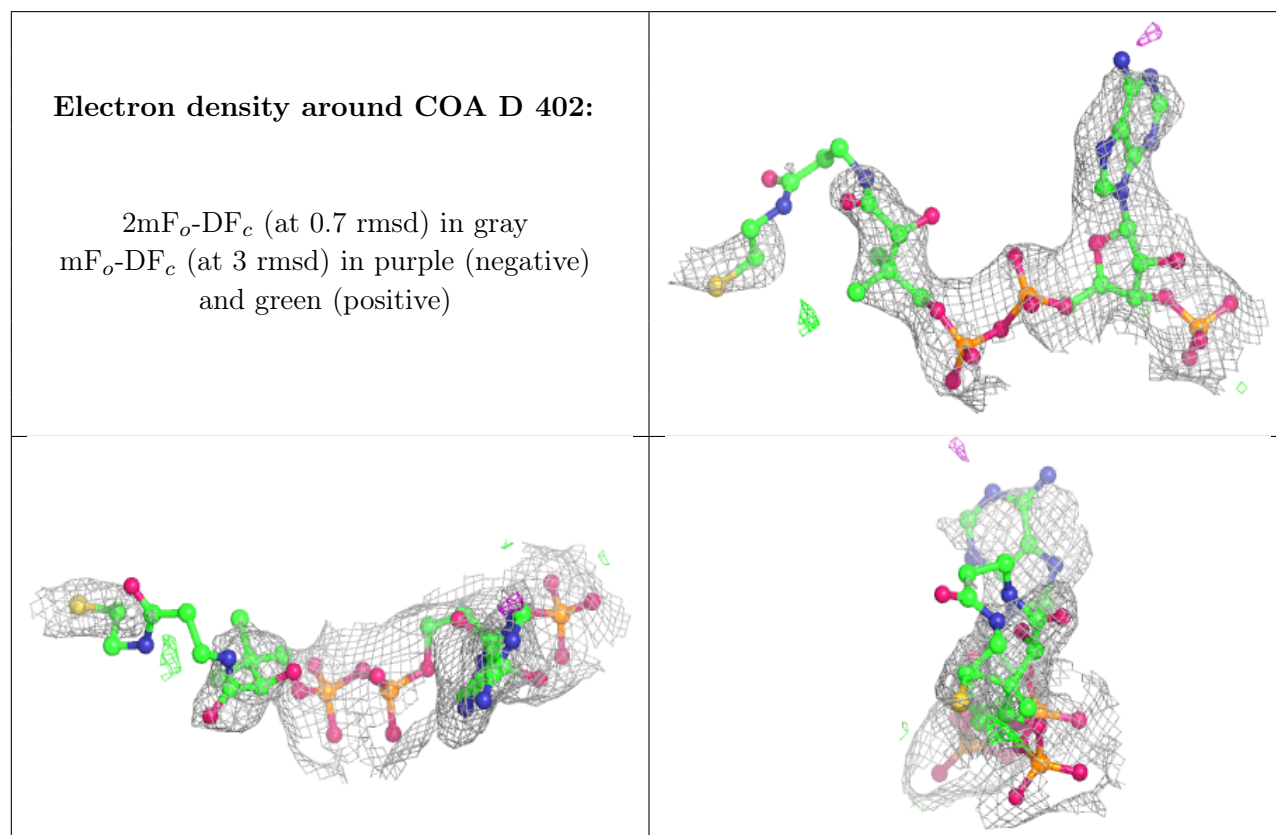
There are no monosaccharides in this entry.

6.4 Ligands [i](#)

In the following table, the Atoms column lists the number of modelled atoms in the group and the number defined in the chemical component dictionary. The B-factors column lists the minimum, median, 95th percentile and maximum values of B factors of atoms in the group. The column labelled 'Q< 0.9' lists the number of atoms with occupancy less than 0.9.

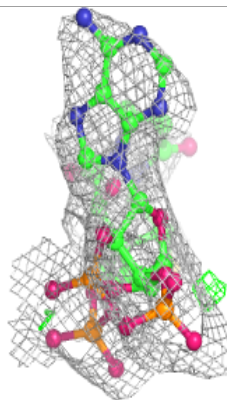
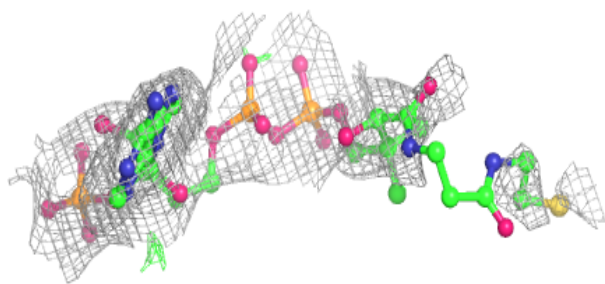
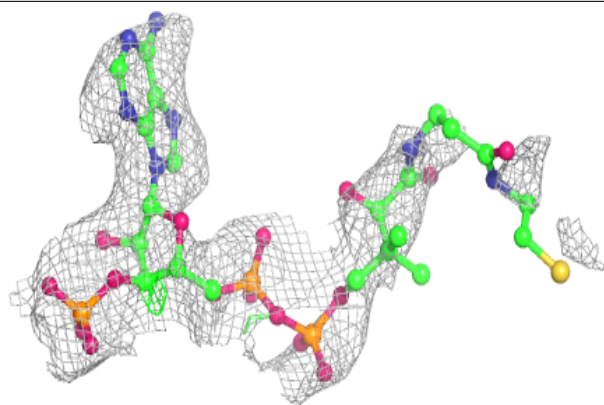
Mol	Type	Chain	Res	Atoms	RSCC	RSR	B-factors(\AA^2)	Q<0.9
2	MG	A	401	1/1	0.56	0.17	52,52,52,52	0
2	MG	D	401	1/1	0.61	0.16	125,125,125,125	0
3	COA	D	402	48/48	0.88	0.17	120,144,169,175	0
2	MG	F	401	1/1	0.89	0.11	127,127,127,127	0
2	MG	E	401	1/1	0.91	0.08	78,78,78,78	0
2	MG	B	401	1/1	0.92	0.09	48,48,48,48	0
3	COA	F	402	48/48	0.92	0.15	133,144,156,160	0
3	COA	E	402	48/48	0.94	0.12	63,73,97,106	0
2	MG	C	401	1/1	0.94	0.12	75,75,75,75	0
3	COA	C	402	48/48	0.95	0.12	63,69,100,108	0
3	COA	A	402	48/48	0.95	0.12	31,40,58,72	0
3	COA	B	402	48/48	0.96	0.11	31,43,61,70	0

The following is a graphical depiction of the model fit to experimental electron density of all instances of the Ligand of Interest. In addition, ligands with molecular weight > 250 and outliers as shown on the geometry validation Tables will also be included. Each fit is shown from different orientation to approximate a three-dimensional view.

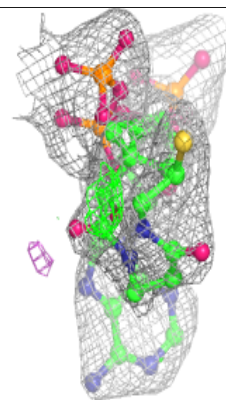
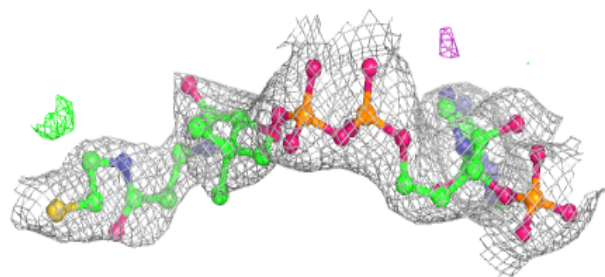
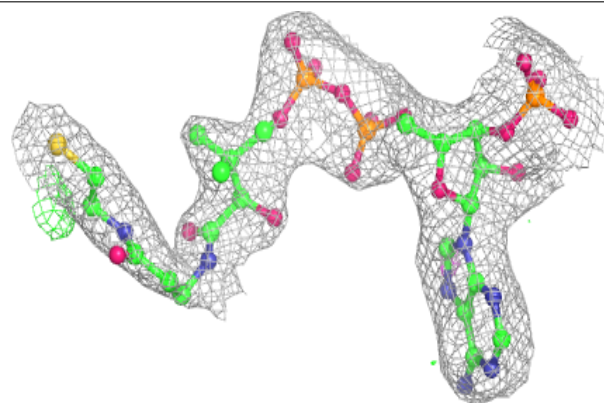


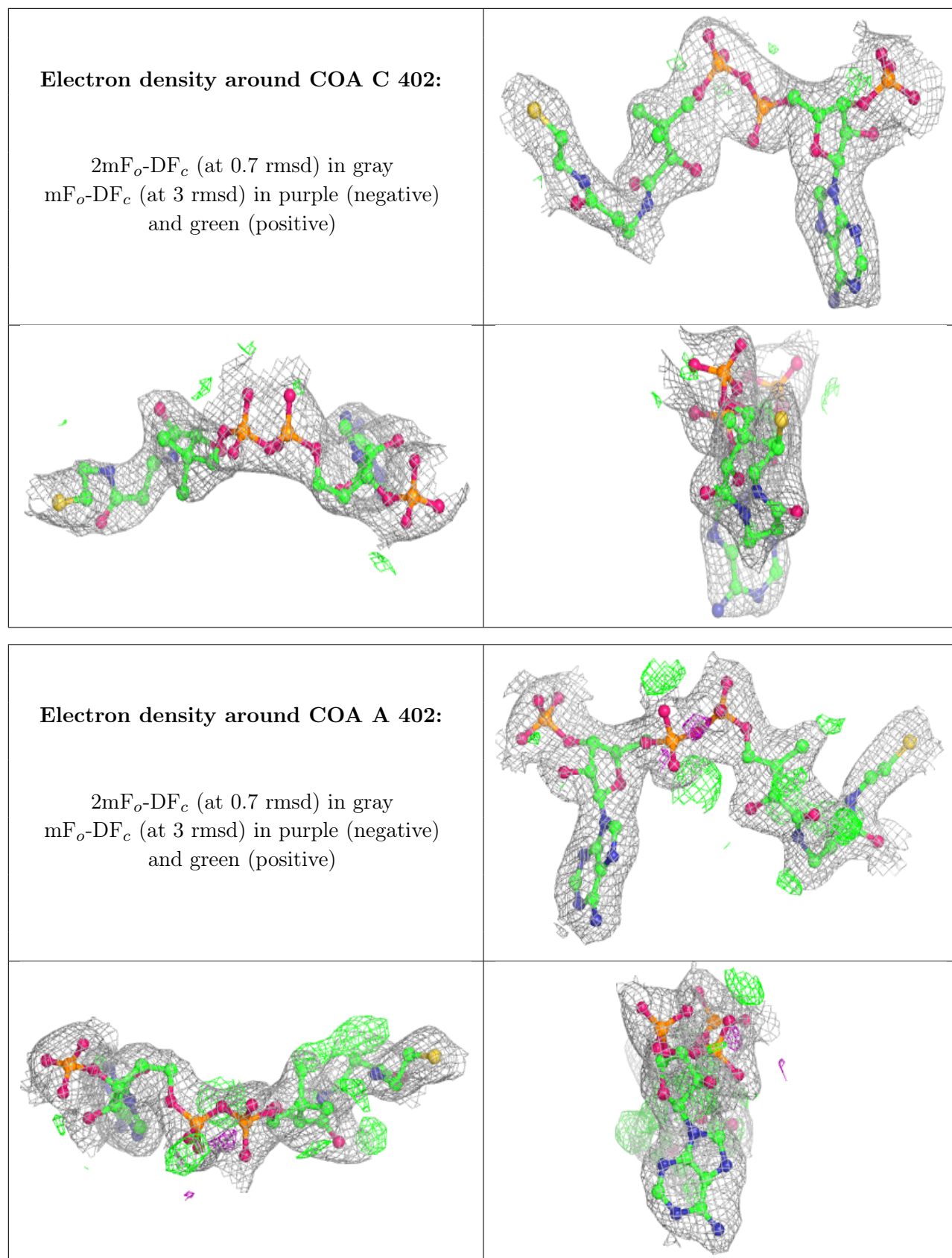
Electron density around COA F 402:

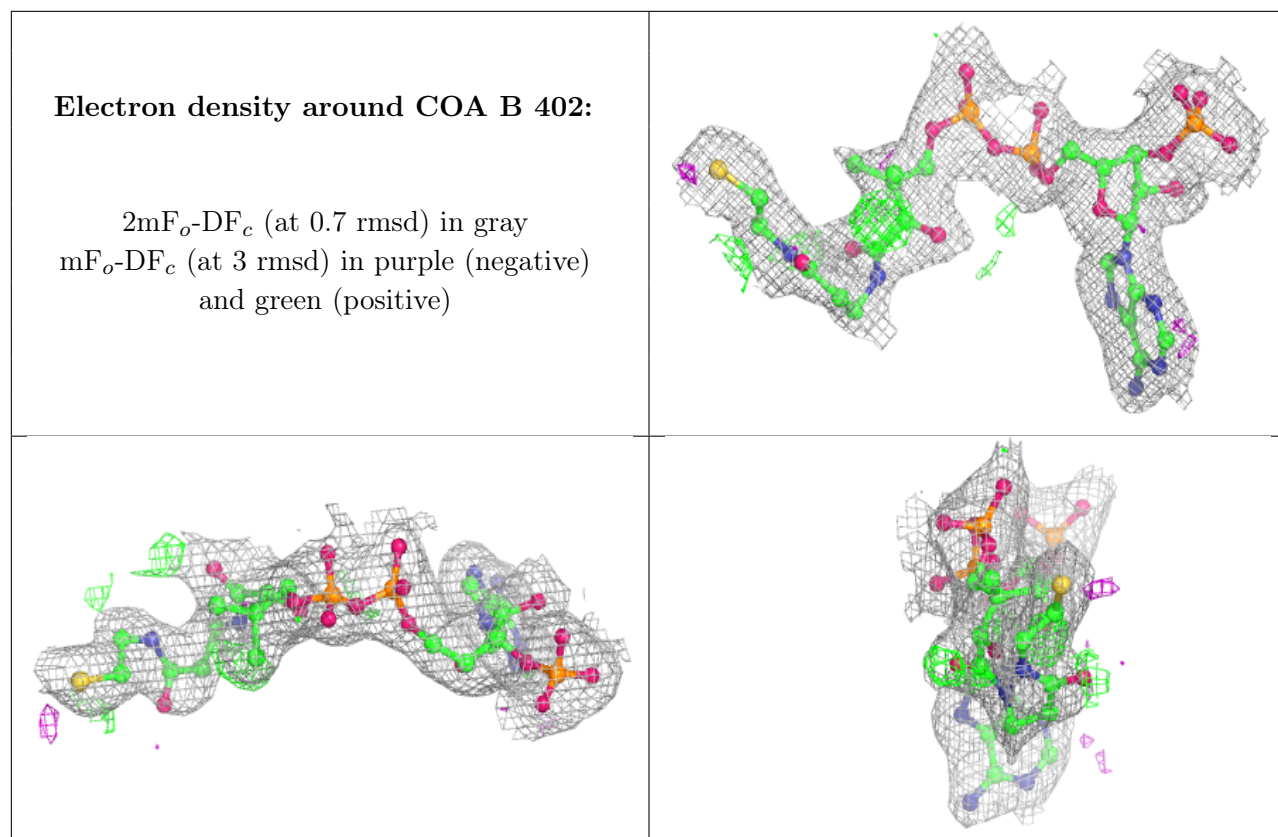
$2mF_o-DF_c$ (at 0.7 rmsd) in gray
 mF_o-DF_c (at 3 rmsd) in purple (negative)
and green (positive)

**Electron density around COA E 402:**

$2mF_o-DF_c$ (at 0.7 rmsd) in gray
 mF_o-DF_c (at 3 rmsd) in purple (negative)
and green (positive)







6.5 Other polymers [i](#)

There are no such residues in this entry.