



wwPDB X-ray Structure Validation Summary Report

Feb 18, 2024 – 12:54 AM EST

PDB ID : 4DM6
Title : Crystal structure of RARb LBD homodimer in complex with TTNPB
Authors : Osz, J.; Brelivet, Y.; Peluso-Iltis, C.; Cura, V.; Eiler, S.; Ruff, M.; Bourguet, W.; Rochel, N.; Moras, D.
Deposited on : 2012-02-07
Resolution : 1.90 Å(reported)

This is a wwPDB X-ray Structure Validation Summary Report for a publicly released PDB entry.

We welcome your comments at validation@mail.wwpdb.org

A user guide is available at

<https://www.wwpdb.org/validation/2017/XrayValidationReportHelp>

with specific help available everywhere you see the  symbol.

The types of validation reports are described at

<http://www.wwpdb.org/validation/2017/FAQs#types>.

The following versions of software and data (see [references](#) ) were used in the production of this report:

MolProbity : 4.02b-467
Mogul : 1.8.5 (274361), CSD as541be (2020)
Xtrriage (Phenix) : 1.13
EDS : 2.36
buster-report : 1.1.7 (2018)
Percentile statistics : 20191225.v01 (using entries in the PDB archive December 25th 2019)
Refmac : 5.8.0158
CCP4 : 7.0.044 (Gargrove)
Ideal geometry (proteins) : Engh & Huber (2001)
Ideal geometry (DNA, RNA) : Parkinson et al. (1996)
Validation Pipeline (wwPDB-VP) : 2.36

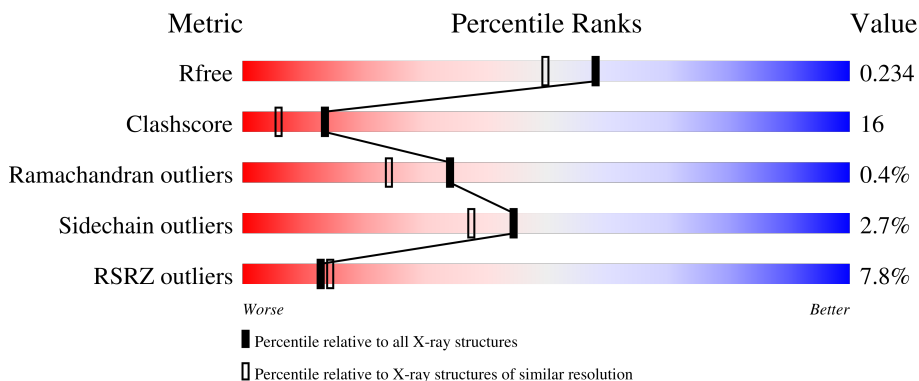
1 Overall quality at a glance

The following experimental techniques were used to determine the structure:

X-RAY DIFFRACTION

The reported resolution of this entry is 1.90 Å.

Percentile scores (ranging between 0-100) for global validation metrics of the entry are shown in the following graphic. The table shows the number of entries on which the scores are based.



Metric	Whole archive (#Entries)	Similar resolution (#Entries, resolution range(Å))
R_{free}	130704	6207 (1.90-1.90)
Clashscore	141614	6847 (1.90-1.90)
Ramachandran outliers	138981	6760 (1.90-1.90)
Sidechain outliers	138945	6760 (1.90-1.90)
RSRZ outliers	127900	6082 (1.90-1.90)

The table below summarises the geometric issues observed across the polymeric chains and their fit to the electron density. The red, orange, yellow and green segments of the lower bar indicate the fraction of residues that contain outliers for ≥ 3 , 2, 1 and 0 types of geometric quality criteria respectively. A grey segment represents the fraction of residues that are not modelled. The numeric value for each fraction is indicated below the corresponding segment, with a dot representing fractions $\leq 5\%$. The upper red bar (where present) indicates the fraction of residues that have poor fit to the electron density. The numeric value is given above the bar.

Mol	Chain	Length	Quality of chain
1	A	267	 9% 61% 27% • 10%
1	B	267	 4% 63% 25% • 10%
2	E	25	 16% 32% 8% • 56%
2	F	25	 4% 32% 12% • 52%

2 Entry composition [i](#)

There are 4 unique types of molecules in this entry. The entry contains 4203 atoms, of which 0 are hydrogens and 0 are deuteriums.

In the tables below, the ZeroOcc column contains the number of atoms modelled with zero occupancy, the AltConf column contains the number of residues with at least one atom in alternate conformation and the Trace column contains the number of residues modelled with at most 2 atoms.

- Molecule 1 is a protein called Retinoic acid receptor beta.

Mol	Chain	Residues	Atoms					ZeroOcc	AltConf	Trace
			Total	C	N	O	S			
1	A	240	1894	1205	318	356	15	5	0	0
1	B	239	1890	1204	317	354	15	2	0	0

There are 42 discrepancies between the modelled and reference sequences:

Chain	Residue	Modelled	Actual	Comment	Reference
A	157	MET	-	initiating methionine	UNP P10826
A	158	GLY	-	expression tag	UNP P10826
A	159	SER	-	expression tag	UNP P10826
A	160	SER	-	expression tag	UNP P10826
A	161	HIS	-	expression tag	UNP P10826
A	162	HIS	-	expression tag	UNP P10826
A	163	HIS	-	expression tag	UNP P10826
A	164	HIS	-	expression tag	UNP P10826
A	165	HIS	-	expression tag	UNP P10826
A	166	HIS	-	expression tag	UNP P10826
A	167	SER	-	expression tag	UNP P10826
A	168	SER	-	expression tag	UNP P10826
A	169	GLY	-	expression tag	UNP P10826
A	170	LEU	-	expression tag	UNP P10826
A	171	VAL	-	expression tag	UNP P10826
A	172	PRO	-	expression tag	UNP P10826
A	173	ARG	-	expression tag	UNP P10826
A	174	GLY	-	expression tag	UNP P10826
A	175	SER	-	expression tag	UNP P10826
A	176	HIS	-	expression tag	UNP P10826
A	177	MET	-	expression tag	UNP P10826
B	1157	MET	-	initiating methionine	UNP P10826
B	1158	GLY	-	expression tag	UNP P10826
B	1159	SER	-	expression tag	UNP P10826
B	1160	SER	-	expression tag	UNP P10826

Continued on next page...

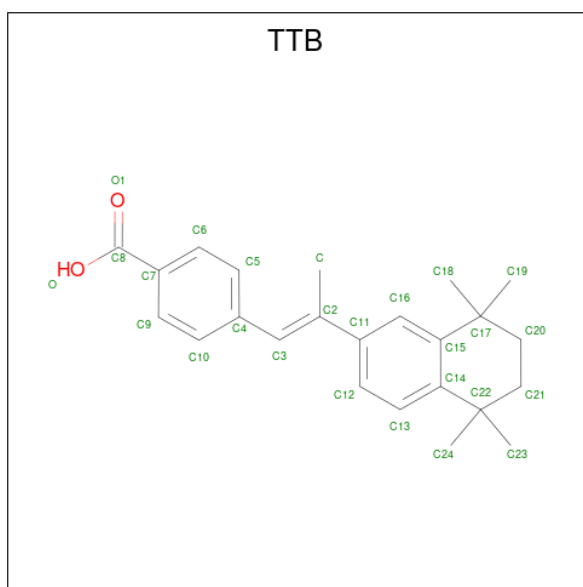
Continued from previous page...

Chain	Residue	Modelled	Actual	Comment	Reference
B	1161	HIS	-	expression tag	UNP P10826
B	1162	HIS	-	expression tag	UNP P10826
B	1163	HIS	-	expression tag	UNP P10826
B	1164	HIS	-	expression tag	UNP P10826
B	1165	HIS	-	expression tag	UNP P10826
B	1166	HIS	-	expression tag	UNP P10826
B	1167	SER	-	expression tag	UNP P10826
B	1168	SER	-	expression tag	UNP P10826
B	1169	GLY	-	expression tag	UNP P10826
B	1170	LEU	-	expression tag	UNP P10826
B	1171	VAL	-	expression tag	UNP P10826
B	1172	PRO	-	expression tag	UNP P10826
B	1173	ARG	-	expression tag	UNP P10826
B	1174	GLY	-	expression tag	UNP P10826
B	1175	SER	-	expression tag	UNP P10826
B	1176	HIS	-	expression tag	UNP P10826
B	1177	MET	-	expression tag	UNP P10826

- Molecule 2 is a protein called Nuclear receptor coactivator 1.

Mol	Chain	Residues	Atoms				ZeroOcc	AltConf	Trace
			Total	C	N	O			
2	E	11	91	59	20	12	5	0	0
2	F	12	98	62	21	15	6	0	0

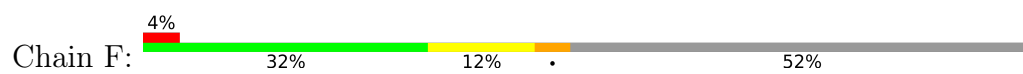
- Molecule 3 is 4-[(1E)-2-(5,5,8,8-TETRAMETHYL-5,6,7,8-TETRAHYDRONAPHTHALEN-2-YL)PROP-1-ENYL]BENZOIC ACID (three-letter code: TTB) (formula: C₂₄H₂₈O₂).



Mol	Chain	Residues	Atoms		ZeroOcc	AltConf	
3	A	1	Total	C	O	0	0
			26	24	2		
3	B	1	Total	C	O	0	0
			26	24	2		

- Molecule 4 is water.

Mol	Chain	Residues	Atoms		ZeroOcc	AltConf
4	A	73	Total	O	0	0
			73	73		
4	B	103	Total	O	0	0
			103	103		
4	F	2	Total	O	0	0
			2	2		



4 Data and refinement statistics

Property	Value	Source
Space group	P 21 21 21	Depositor
Cell constants a, b, c, α , β , γ	58.09Å 84.06Å 102.14Å 90.00° 90.00° 90.00°	Depositor
Resolution (Å)	20.00 – 1.90 19.18 – 1.90	Depositor EDS
% Data completeness (in resolution range)	(Not available) (20.00-1.90) 99.8 (19.18-1.90)	Depositor EDS
R_{merge}	(Not available)	Depositor
R_{sym}	(Not available)	Depositor
$\langle I/\sigma(I) \rangle$ ¹	4.58 (at 1.90Å)	Xtrriage
Refinement program	CNS 1.1	Depositor
R, R_{free}	0.206 , 0.239 0.202 , 0.234	Depositor DCC
R_{free} test set	2003 reflections (5.00%)	wwPDB-VP
Wilson B-factor (Å ²)	27.9	Xtrriage
Anisotropy	0.316	Xtrriage
Bulk solvent k_{sol} (e/Å ³), B_{sol} (Å ²)	0.39 , 62.0	EDS
L-test for twinning ²	$\langle L \rangle = 0.45$, $\langle L^2 \rangle = 0.27$	Xtrriage
Estimated twinning fraction	No twinning to report.	Xtrriage
F_o, F_c correlation	0.95	EDS
Total number of atoms	4203	wwPDB-VP
Average B, all atoms (Å ²)	33.0	wwPDB-VP

Xtrriage's analysis on translational NCS is as follows: *The largest off-origin peak in the Patterson function is 4.70% of the height of the origin peak. No significant pseudotranslation is detected.*

¹Intensities estimated from amplitudes.

²Theoretical values of $\langle |L| \rangle$, $\langle L^2 \rangle$ for acentric reflections are 0.5, 0.333 respectively for untwinned datasets, and 0.375, 0.2 for perfectly twinned datasets.

5 Model quality [i](#)

5.1 Standard geometry [i](#)

Bond lengths and bond angles in the following residue types are not validated in this section: TTB

The Z score for a bond length (or angle) is the number of standard deviations the observed value is removed from the expected value. A bond length (or angle) with $|Z| > 5$ is considered an outlier worth inspection. RMSZ is the root-mean-square of all Z scores of the bond lengths (or angles).

Mol	Chain	Bond lengths		Bond angles	
		RMSZ	# Z >5	RMSZ	# Z >5
1	A	0.55	6/1924 (0.3%)	0.56	1/2598 (0.0%)
1	B	0.66	7/1921 (0.4%)	0.57	1/2595 (0.0%)
2	E	1.52	3/92 (3.3%)	0.79	0/122
2	F	2.59	9/99 (9.1%)	1.01	0/130
All	All	0.75	25/4036 (0.6%)	0.59	2/5445 (0.0%)

The worst 5 of 25 bond length outliers are listed below:

Mol	Chain	Res	Type	Atoms	Z	Observed(Å)	Ideal(Å)
2	F	796	GLU	CB-CG	-11.19	1.30	1.52
1	B	1215	SER	C-O	-10.25	1.03	1.23
2	F	794	LEU	C-O	-9.58	1.05	1.23
1	B	1214	SER	C-O	-9.17	1.05	1.23
1	B	1216	ALA	C-O	-8.37	1.07	1.23

All (2) bond angle outliers are listed below:

Mol	Chain	Res	Type	Atoms	Z	Observed(°)	Ideal(°)
1	B	1215	SER	N-CA-C	6.77	129.29	111.00
1	A	373	PRO	N-CA-CB	5.52	109.93	103.30

There are no chirality outliers.

There are no planarity outliers.

5.2 Too-close contacts [i](#)

In the following table, the Non-H and H(model) columns list the number of non-hydrogen atoms and hydrogen atoms in the chain respectively. The H(added) column lists the number of hydrogen atoms added and optimized by MolProbity. The Clashes column lists the number of clashes within

the asymmetric unit, whereas Symm-Clashes lists symmetry-related clashes.

Mol	Chain	Non-H	H(model)	H(added)	Clashes	Symm-Clashes
1	A	1894	0	1955	68	0
1	B	1890	0	1956	67	0
2	E	91	0	95	2	0
2	F	98	0	101	0	0
3	A	26	0	27	1	0
3	B	26	0	27	3	0
4	A	73	0	0	1	0
4	B	103	0	0	2	0
4	F	2	0	0	1	0
All	All	4203	0	4161	130	0

The all-atom clashscore is defined as the number of clashes found per 1000 atoms (including hydrogen atoms). The all-atom clashscore for this structure is 16.

The worst 5 of 130 close contacts within the same asymmetric unit are listed below, sorted by their clash magnitude.

Atom-1	Atom-2	Interatomic distance (Å)	Clash overlap (Å)
1:B:1382:LYS:HA	1:B:1382:LYS:HE2	1.44	0.99
1:A:255:THR:HG23	1:A:258:ASP:H	1.32	0.94
1:B:1186:LEU:HD23	1:B:1363:ILE:HD12	1.49	0.94
1:B:1294:LEU:HD12	1:B:1299:MET:HE3	1.54	0.87
1:B:1412:ILE:O	1:B:1416:LEU:HD23	1.73	0.87

There are no symmetry-related clashes.

5.3 Torsion angles [i](#)

5.3.1 Protein backbone [i](#)

In the following table, the Percentiles column shows the percent Ramachandran outliers of the chain as a percentile score with respect to all X-ray entries followed by that with respect to entries of similar resolution.

The Analysed column shows the number of residues for which the backbone conformation was analysed, and the total number of residues.

Mol	Chain	Analysed	Favoured	Allowed	Outliers	Percentiles
1	A	238/267 (89%)	227 (95%)	10 (4%)	1 (0%)	34 24
1	B	237/267 (89%)	231 (98%)	5 (2%)	1 (0%)	34 24

Continued on next page...

Continued from previous page...

Mol	Chain	Analysed	Favoured	Allowed	Outliers	Percentiles	
2	E	9/25 (36%)	8 (89%)	1 (11%)	0	100	100
2	F	10/25 (40%)	9 (90%)	1 (10%)	0	100	100
All	All	494/584 (85%)	475 (96%)	17 (3%)	2 (0%)	34	24

All (2) Ramachandran outliers are listed below:

Mol	Chain	Res	Type
1	B	1215	SER
1	A	215	SER

5.3.2 Protein sidechains [i](#)

In the following table, the Percentiles column shows the percent sidechain outliers of the chain as a percentile score with respect to all X-ray entries followed by that with respect to entries of similar resolution.

The Analysed column shows the number of residues for which the sidechain conformation was analysed, and the total number of residues.

Mol	Chain	Analysed	Rotameric	Outliers	Percentiles	
1	A	213/238 (90%)	207 (97%)	6 (3%)	43	36
1	B	213/238 (90%)	208 (98%)	5 (2%)	50	45
2	E	9/24 (38%)	9 (100%)	0	100	100
2	F	10/24 (42%)	9 (90%)	1 (10%)	7	3
All	All	445/524 (85%)	433 (97%)	12 (3%)	44	38

5 of 12 residues with a non-rotameric sidechain are listed below:

Mol	Chain	Res	Type
1	B	1187	ASP
1	B	1214	SER
2	F	796	GLU
1	B	1381	MET
1	A	316	ASN

Sometimes sidechains can be flipped to improve hydrogen bonding and reduce clashes. All (5) such sidechains are listed below:

Mol	Chain	Res	Type
1	A	218	HIS
1	A	316	ASN
1	A	342	GLN
1	B	1206	GLN
1	B	1218	HIS

5.3.3 RNA [i](#)

There are no RNA molecules in this entry.

5.4 Non-standard residues in protein, DNA, RNA chains [i](#)

There are no non-standard protein/DNA/RNA residues in this entry.

5.5 Carbohydrates [i](#)

There are no monosaccharides in this entry.

5.6 Ligand geometry [i](#)

2 ligands are modelled in this entry.

In the following table, the Counts columns list the number of bonds (or angles) for which Mogul statistics could be retrieved, the number of bonds (or angles) that are observed in the model and the number of bonds (or angles) that are defined in the Chemical Component Dictionary. The Link column lists molecule types, if any, to which the group is linked. The Z score for a bond length (or angle) is the number of standard deviations the observed value is removed from the expected value. A bond length (or angle) with $|Z| > 2$ is considered an outlier worth inspection. RMSZ is the root-mean-square of all Z scores of the bond lengths (or angles).

Mol	Type	Chain	Res	Link	Bond lengths			Bond angles		
					Counts	RMSZ	# $ Z > 2$	Counts	RMSZ	# $ Z > 2$
3	TTB	B	1501	-	28,28,28	6.61	20 (71%)	42,43,43	1.01	2 (4%)
3	TTB	A	501	-	28,28,28	7.12	22 (78%)	42,43,43	1.02	2 (4%)

In the following table, the Chirals column lists the number of chiral outliers, the number of chiral centers analysed, the number of these observed in the model and the number defined in the Chemical Component Dictionary. Similar counts are reported in the Torsion and Rings columns. '-' means no outliers of that kind were identified.

Mol	Type	Chain	Res	Link	Chirals	Torsions	Rings
3	TTB	B	1501	-	-	0/12/31/31	0/3/3/3
3	TTB	A	501	-	-	0/12/31/31	0/3/3/3

The worst 5 of 42 bond length outliers are listed below:

Mol	Chain	Res	Type	Atoms	Z	Observed(Å)	Ideal(Å)
3	A	501	TTB	C12-C11	17.28	1.68	1.39
3	B	1501	TTB	C13-C14	14.66	1.59	1.39
3	A	501	TTB	C15-C14	13.90	1.64	1.40
3	A	501	TTB	C9-C7	12.18	1.60	1.39
3	B	1501	TTB	C12-C11	11.70	1.59	1.39

All (4) bond angle outliers are listed below:

Mol	Chain	Res	Type	Atoms	Z	Observed(°)	Ideal(°)
3	B	1501	TTB	C21-C22-C14	3.13	115.21	110.16
3	A	501	TTB	C21-C22-C14	2.71	114.53	110.16
3	A	501	TTB	C4-C3-C2	2.56	139.80	129.34
3	B	1501	TTB	C20-C17-C15	2.15	113.63	110.16

There are no chirality outliers.

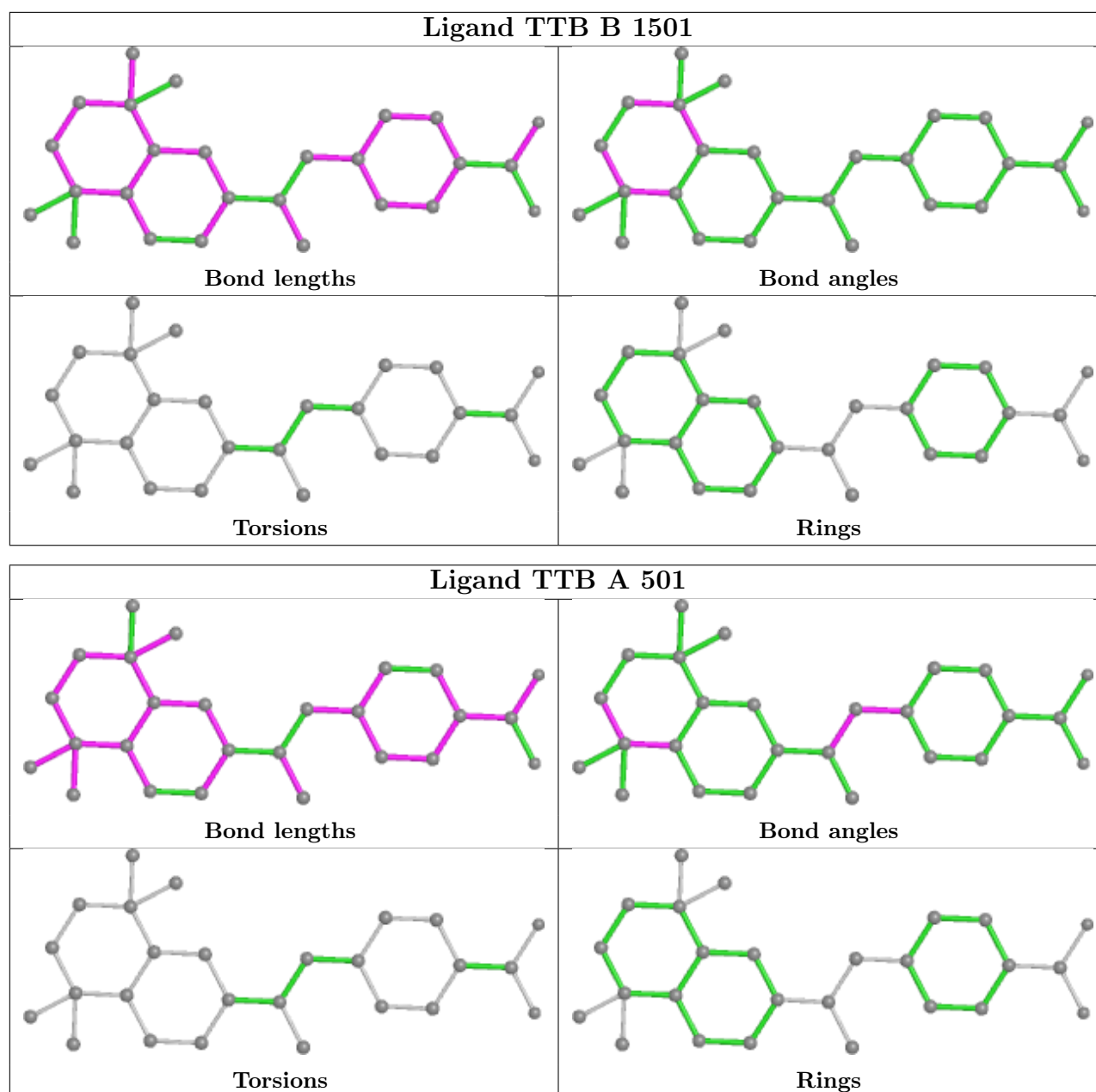
There are no torsion outliers.

There are no ring outliers.

2 monomers are involved in 4 short contacts:

Mol	Chain	Res	Type	Clashes	Symm-Clashes
3	B	1501	TTB	3	0
3	A	501	TTB	1	0

The following is a two-dimensional graphical depiction of Mogul quality analysis of bond lengths, bond angles, torsion angles, and ring geometry for all instances of the Ligand of Interest. In addition, ligands with molecular weight > 250 and outliers as shown on the validation Tables will also be included. For torsion angles, if less than 5% of the Mogul distribution of torsion angles is within 10 degrees of the torsion angle in question, then that torsion angle is considered an outlier. Any bond that is central to one or more torsion angles identified as an outlier by Mogul will be highlighted in the graph. For rings, the root-mean-square deviation (RMSD) between the ring in question and similar rings identified by Mogul is calculated over all ring torsion angles. If the average RMSD is greater than 60 degrees and the minimal RMSD between the ring in question and any Mogul-identified rings is also greater than 60 degrees, then that ring is considered an outlier. The outliers are highlighted in purple. The color gray indicates Mogul did not find sufficient equivalents in the CSD to analyse the geometry.



5.7 Other polymers [i](#)

There are no such residues in this entry.

5.8 Polymer linkage issues [i](#)

There are no chain breaks in this entry.

6 Fit of model and data [i](#)

6.1 Protein, DNA and RNA chains [i](#)

In the following table, the column labelled ‘#RSRZ > 2’ contains the number (and percentage) of RSRZ outliers, followed by percent RSRZ outliers for the chain as percentile scores relative to all X-ray entries and entries of similar resolution. The OWAB column contains the minimum, median, 95th percentile and maximum values of the occupancy-weighted average B-factor per residue. The column labelled ‘Q < 0.9’ lists the number of (and percentage) of residues with an average occupancy less than 0.9.

Mol	Chain	Analysed	<RSRZ>	#RSRZ>2	OWAB(Å ²)	Q<0.9
1	A	240/267 (89%)	0.52	24 (10%) 7 8	19, 33, 63, 72	2 (0%)
1	B	239/267 (89%)	0.23	10 (4%) 36 39	16, 27, 49, 62	1 (0%)
2	E	11/25 (44%)	1.00	4 (36%) 0 0	34, 39, 59, 62	2 (18%)
2	F	12/25 (48%)	0.52	1 (8%) 11 13	24, 34, 49, 51	2 (16%)
All	All	502/584 (85%)	0.39	39 (7%) 13 14	16, 31, 56, 72	7 (1%)

The worst 5 of 39 RSRZ outliers are listed below:

Mol	Chain	Res	Type	RSRZ
1	A	205	CYS	7.7
1	B	1205	CYS	7.2
1	A	371	SER	7.0
1	A	207	LEU	6.8
1	A	370	PRO	6.4

6.2 Non-standard residues in protein, DNA, RNA chains [i](#)

There are no non-standard protein/DNA/RNA residues in this entry.

6.3 Carbohydrates [i](#)

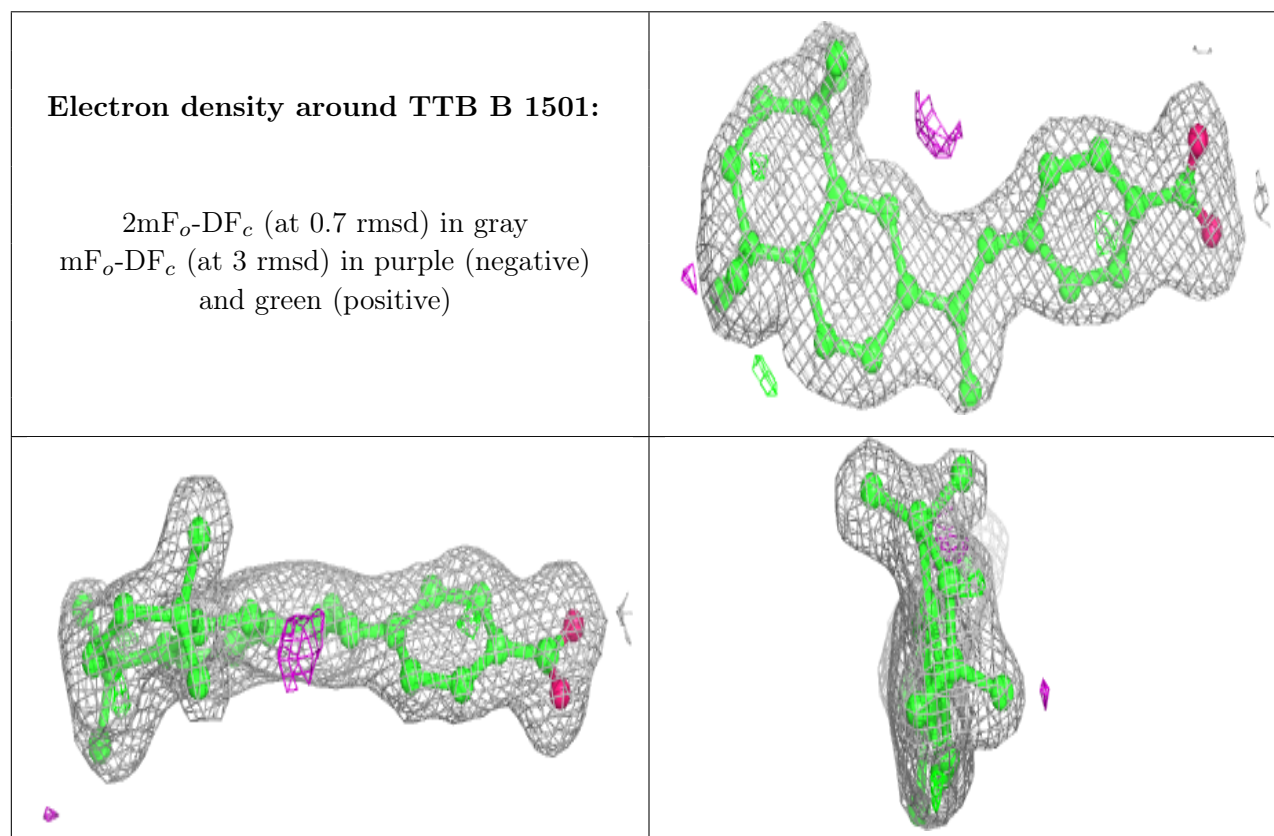
There are no monosaccharides in this entry.

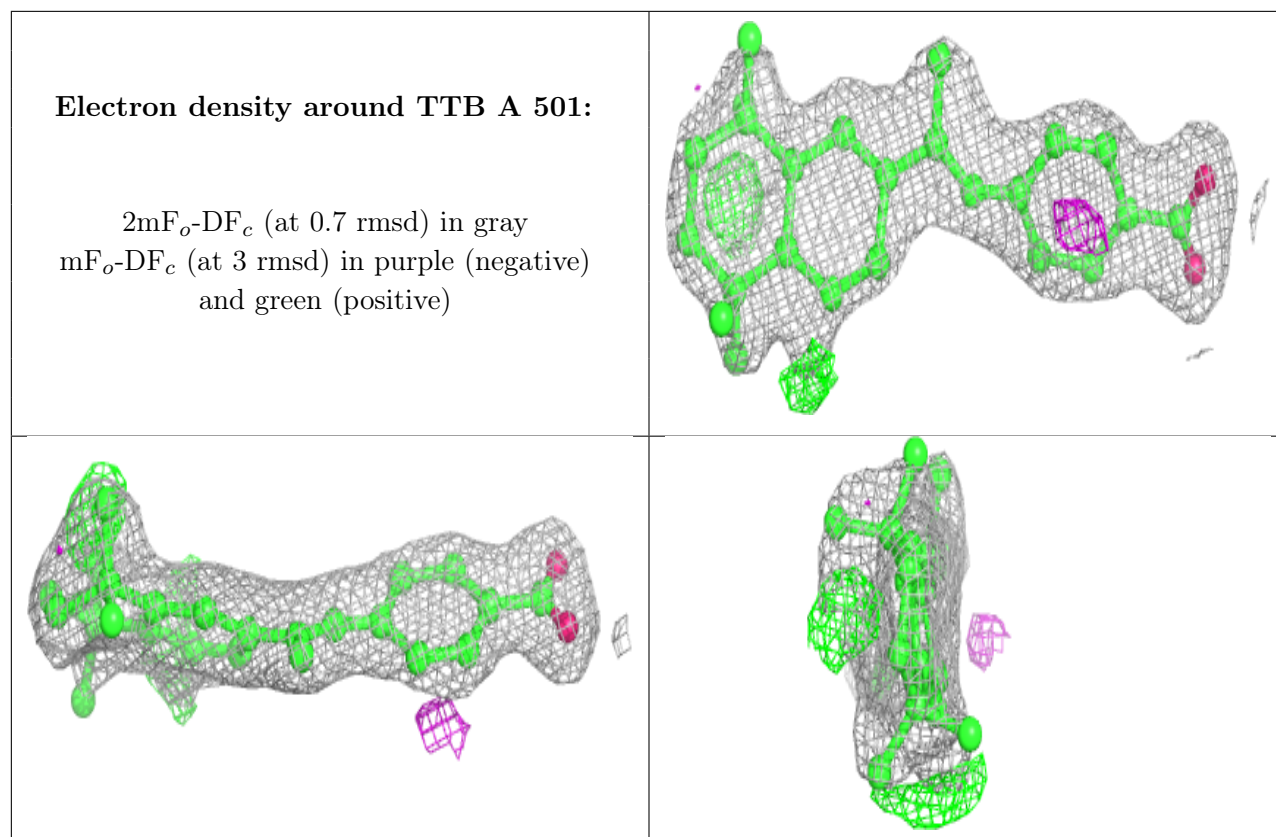
6.4 Ligands [i](#)

In the following table, the Atoms column lists the number of modelled atoms in the group and the number defined in the chemical component dictionary. The B-factors column lists the minimum, median, 95th percentile and maximum values of B factors of atoms in the group. The column labelled ‘Q < 0.9’ lists the number of atoms with occupancy less than 0.9.

Mol	Type	Chain	Res	Atoms	RSCC	RSR	B-factors(\AA^2)	Q<0.9
3	TTB	B	1501	26/26	0.88	0.17	25,30,34,35	0
3	TTB	A	501	26/26	0.91	0.16	30,36,43,44	0

The following is a graphical depiction of the model fit to experimental electron density of all instances of the Ligand of Interest. In addition, ligands with molecular weight > 250 and outliers as shown on the geometry validation Tables will also be included. Each fit is shown from different orientation to approximate a three-dimensional view.





6.5 Other polymers [i](#)

There are no such residues in this entry.