



# wwPDB X-ray Structure Validation Summary Report ⓘ

Jun 22, 2024 – 04:29 PM EDT

PDB ID : 5DF7  
Title : CRYSTAL STRUCTURE OF PENICILLIN-BINDING PROTEIN 3 FROM PSEUDOMONAS AERUGINOSA IN COMPLEX WITH AZLOCILLIN  
Authors : Ren, J.; Nettleship, J.E.; Males, A.; Stuart, D.I.; Owens, R.J.  
Deposited on : 2015-08-26  
Resolution : 2.00 Å(reported)

This is a wwPDB X-ray Structure Validation Summary Report for a publicly released PDB entry.

We welcome your comments at [validation@mail.wwpdb.org](mailto:validation@mail.wwpdb.org)

A user guide is available at

<https://www.wwpdb.org/validation/2017/XrayValidationReportHelp>

with specific help available everywhere you see the ⓘ symbol.

The types of validation reports are described at

<http://www.wwpdb.org/validation/2017/FAQs#types>.

---

The following versions of software and data (see [references ⓘ](#)) were used in the production of this report:

MolProbity : 4.02b-467  
Mogul : 1.8.5 (274361), CSD as541be (2020)  
Xtriage (Phenix) : 1.13  
EDS : 2.37.1  
buster-report : 1.1.7 (2018)  
Percentile statistics : 20191225.v01 (using entries in the PDB archive December 25th 2019)  
Refmac : 5.8.0158  
CCP4 : 7.0.044 (Gargrove)  
Ideal geometry (proteins) : Engh & Huber (2001)  
Ideal geometry (DNA, RNA) : Parkinson et al. (1996)  
Validation Pipeline (wwPDB-VP) : 2.37.1

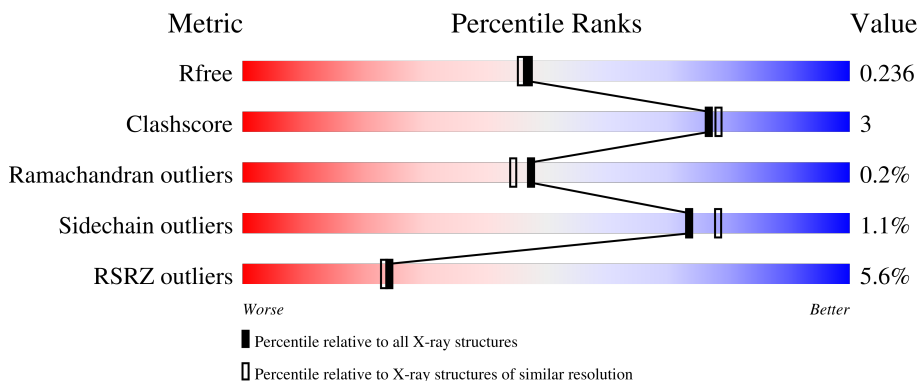
# 1 Overall quality at a glance

The following experimental techniques were used to determine the structure:

*X-RAY DIFFRACTION*

The reported resolution of this entry is 2.00 Å.

Percentile scores (ranging between 0-100) for global validation metrics of the entry are shown in the following graphic. The table shows the number of entries on which the scores are based.



Metric	Whole archive (#Entries)	Similar resolution (#Entries, resolution range(Å))
$R_{free}$	130704	8085 (2.00-2.00)
Clashscore	141614	9178 (2.00-2.00)
Ramachandran outliers	138981	9054 (2.00-2.00)
Sidechain outliers	138945	9053 (2.00-2.00)
RSRZ outliers	127900	7900 (2.00-2.00)

The table below summarises the geometric issues observed across the polymeric chains and their fit to the electron density. The red, orange, yellow and green segments of the lower bar indicate the fraction of residues that contain outliers for  $\geq 3$ , 2, 1 and 0 types of geometric quality criteria respectively. A grey segment represents the fraction of residues that are not modelled. The numeric value for each fraction is indicated below the corresponding segment, with a dot representing fractions  $\leq 5\%$ . The upper red bar (where present) indicates the fraction of residues that have poor fit to the electron density. The numeric value is given above the bar.

Mol	Chain	Length	Quality of chain
1	A	564	 3% 84% 7% 9%
1	B	564	 7% 79% 7% 13%

## 2 Entry composition i

There are 6 unique types of molecules in this entry. The entry contains 8127 atoms, of which 0 are hydrogens and 0 are deuteriums.

In the tables below, the ZeroOcc column contains the number of atoms modelled with zero occupancy, the AltConf column contains the number of residues with at least one atom in alternate conformation and the Trace column contains the number of residues modelled with at most 2 atoms.

- Molecule 1 is a protein called Cell division protein.

Mol	Chain	Residues	Atoms					ZeroOcc	AltConf	Trace
			Total	C	N	O	S			
1	A	515	3927	2477	713	725	12	0	0	0
1	B	490	3722	2352	667	691	12	0	0	0

There are 38 discrepancies between the modelled and reference sequences:

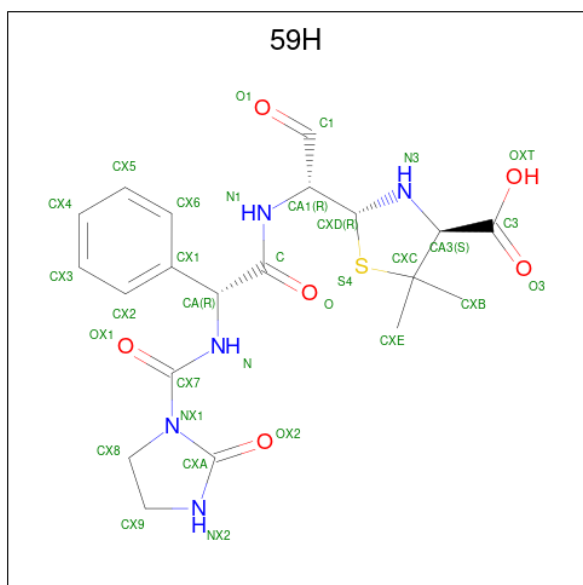
Chain	Residue	Modelled	Actual	Comment	Reference
A	16	MET	-	engineered mutation	UNP Q51504
A	17	ALA	-	expression tag	UNP Q51504
A	18	HIS	-	expression tag	UNP Q51504
A	19	HIS	-	expression tag	UNP Q51504
A	20	HIS	-	expression tag	UNP Q51504
A	21	HIS	-	expression tag	UNP Q51504
A	22	HIS	-	expression tag	UNP Q51504
A	23	HIS	-	expression tag	UNP Q51504
A	24	SER	-	expression tag	UNP Q51504
A	25	SER	-	expression tag	UNP Q51504
A	26	GLY	-	expression tag	UNP Q51504
A	27	LEU	-	expression tag	UNP Q51504
A	28	GLU	-	expression tag	UNP Q51504
A	29	VAL	-	expression tag	UNP Q51504
A	30	LEU	-	expression tag	UNP Q51504
A	31	PHE	-	expression tag	UNP Q51504
A	32	GLN	-	expression tag	UNP Q51504
A	33	GLY	-	expression tag	UNP Q51504
A	34	PRO	-	expression tag	UNP Q51504
B	16	MET	-	engineered mutation	UNP Q51504
B	17	ALA	-	expression tag	UNP Q51504
B	18	HIS	-	expression tag	UNP Q51504
B	19	HIS	-	expression tag	UNP Q51504
B	20	HIS	-	expression tag	UNP Q51504
B	21	HIS	-	expression tag	UNP Q51504

*Continued on next page...*

Continued from previous page...

Chain	Residue	Modelled	Actual	Comment	Reference
B	22	HIS	-	expression tag	UNP Q51504
B	23	HIS	-	expression tag	UNP Q51504
B	24	SER	-	expression tag	UNP Q51504
B	25	SER	-	expression tag	UNP Q51504
B	26	GLY	-	expression tag	UNP Q51504
B	27	LEU	-	expression tag	UNP Q51504
B	28	GLU	-	expression tag	UNP Q51504
B	29	VAL	-	expression tag	UNP Q51504
B	30	LEU	-	expression tag	UNP Q51504
B	31	PHE	-	expression tag	UNP Q51504
B	32	GLN	-	expression tag	UNP Q51504
B	33	GLY	-	expression tag	UNP Q51504
B	34	PRO	-	expression tag	UNP Q51504

- Molecule 2 is (2R,4S)-5,5-dimethyl-2-[(1R)-2-oxo-1-[[[(2R)-2-[[[(2-oxoimidazolidin-1-yl)carbonyl]amino]-2-phenylacetyl]amino]ethyl]-1,3-thiazolidine-4-carboxylic acid (three-letter code: 59H) (formula: C<sub>20</sub>H<sub>25</sub>N<sub>5</sub>O<sub>6</sub>S).



Mol	Chain	Residues	Atoms					ZeroOcc	AltConf	
			Total	C	N	O	S			
2	A	1	Total	32	20	5	6	1	0	0
2	B	1	Total	32	20	5	6	1	0	0

- Molecule 3 is GLYCEROL (three-letter code: GOL) (formula: C<sub>3</sub>H<sub>8</sub>O<sub>3</sub>).

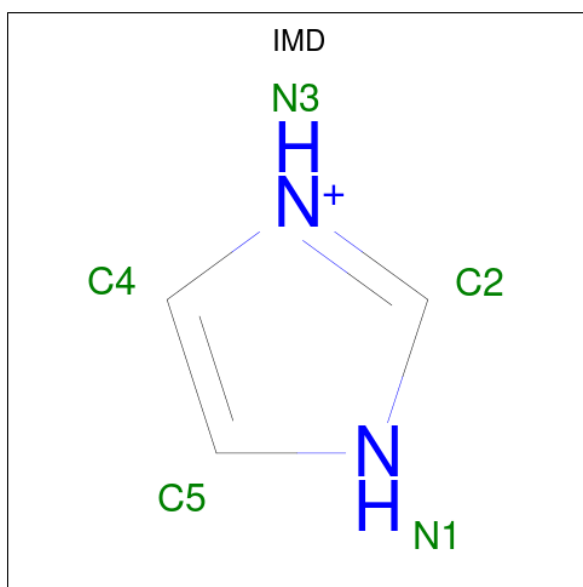


Mol	Chain	Residues	Atoms	ZeroOcc	AltConf
3	A	1	Total C O 6 3 3	0	0
3	B	1	Total C O 6 3 3	0	0
3	B	1	Total C O 6 3 3	0	0

- Molecule 4 is CHLORIDE ION (three-letter code: CL) (formula: Cl).

Mol	Chain	Residues	Atoms	ZeroOcc	AltConf
4	A	1	Total Cl 1 1	0	0
4	B	3	Total Cl 3 3	0	0

- Molecule 5 is IMIDAZOLE (three-letter code: IMD) (formula: C<sub>3</sub>H<sub>5</sub>N<sub>2</sub>).



Mol	Chain	Residues	Atoms	ZeroOcc	AltConf
5	A	1	Total C N 5 3 2	0	0
5	B	1	Total C N 5 3 2	0	0

- Molecule 6 is water.

Mol	Chain	Residues	Atoms	ZeroOcc	AltConf
6	A	218	Total O 218 218	0	0
6	B	164	Total O 164 164	0	0



## 4 Data and refinement statistics

Property	Value	Source
Space group	P 1	Depositor
Cell constants a, b, c, $\alpha$ , $\beta$ , $\gamma$	57.25Å 74.92Å 82.72Å 71.26° 85.99° 85.69°	Depositor
Resolution (Å)	47.19 – 2.00 47.19 – 2.00	Depositor EDS
% Data completeness (in resolution range)	86.7 (47.19-2.00) 86.7 (47.19-2.00)	Depositor EDS
$R_{merge}$	0.14	Depositor
$R_{sym}$	(Not available)	Depositor
$\langle I/\sigma(I) \rangle$ <sup>1</sup>	1.89 (at 2.00Å)	Xtrriage
Refinement program	REFMAC 5.7.0032	Depositor
R, $R_{free}$	0.198 , 0.237 0.197 , 0.236	Depositor DCC
$R_{free}$ test set	3803 reflections (5.01%)	wwPDB-VP
Wilson B-factor (Å <sup>2</sup> )	26.2	Xtrriage
Anisotropy	0.287	Xtrriage
Bulk solvent $k_{sol}$ (e/Å <sup>3</sup> ), $B_{sol}$ (Å <sup>2</sup> )	0.38 , 55.5	EDS
L-test for twinning <sup>2</sup>	$\langle  L  \rangle = 0.49$ , $\langle L^2 \rangle = 0.32$	Xtrriage
Estimated twinning fraction	No twinning to report.	Xtrriage
$F_o, F_c$ correlation	0.95	EDS
Total number of atoms	8127	wwPDB-VP
Average B, all atoms (Å <sup>2</sup> )	40.0	wwPDB-VP

Xtrriage's analysis on translational NCS is as follows: *The largest off-origin peak in the Patterson function is 5.21% of the height of the origin peak. No significant pseudotranslation is detected.*

<sup>1</sup>Intensities estimated from amplitudes.

<sup>2</sup>Theoretical values of  $\langle |L| \rangle$ ,  $\langle L^2 \rangle$  for acentric reflections are 0.5, 0.333 respectively for untwinned datasets, and 0.375, 0.2 for perfectly twinned datasets.



## 5 Model quality

### 5.1 Standard geometry

Bond lengths and bond angles in the following residue types are not validated in this section: IMD, 59H, CL, GOL

The Z score for a bond length (or angle) is the number of standard deviations the observed value is removed from the expected value. A bond length (or angle) with  $|Z| > 5$  is considered an outlier worth inspection. RMSZ is the root-mean-square of all Z scores of the bond lengths (or angles).

Mol	Chain	Bond lengths		Bond angles	
		RMSZ	# Z  >5	RMSZ	# Z  >5
1	A	0.34	0/4004	0.54	0/5433
1	B	0.33	0/3797	0.52	0/5154
All	All	0.34	0/7801	0.53	0/10587

There are no bond length outliers.

There are no bond angle outliers.

There are no chirality outliers.

There are no planarity outliers.

### 5.2 Too-close contacts

In the following table, the Non-H and H(model) columns list the number of non-hydrogen atoms and hydrogen atoms in the chain respectively. The H(added) column lists the number of hydrogen atoms added and optimized by MolProbity. The Clashes column lists the number of clashes within the asymmetric unit, whereas Symm-Clashes lists symmetry-related clashes.

Mol	Chain	Non-H	H(model)	H(added)	Clashes	Symm-Clashes
1	A	3927	0	3988	21	0
1	B	3722	0	3760	26	0
2	A	32	0	23	0	0
2	B	32	0	23	0	0
3	A	6	0	8	2	0
3	B	12	0	16	5	0
4	A	1	0	0	0	0
4	B	3	0	0	0	0
5	A	5	0	5	0	0
5	B	5	0	5	0	0
6	A	218	0	0	0	0

*Continued on next page...*

Continued from previous page...

Mol	Chain	Non-H	H(model)	H(added)	Clashes	Symm-Clashes
6	B	164	0	0	1	0
All	All	8127	0	7828	46	0

The all-atom clashscore is defined as the number of clashes found per 1000 atoms (including hydrogen atoms). The all-atom clashscore for this structure is 3.

The worst 5 of 46 close contacts within the same asymmetric unit are listed below, sorted by their clash magnitude.

Atom-1	Atom-2	Interatomic distance (Å)	Clash overlap (Å)
1:B:269:ASN:H	3:B:603:GOL:H31	1.56	0.70
1:B:321:GLY:HA3	1:B:335:ARG:HD3	1.78	0.66
1:B:562:THR:HG21	6:B:803:HOH:O	1.99	0.62
1:A:51:ARG:HH11	1:A:198:ASP:HB2	1.65	0.62
1:A:478:GLY:H	1:A:562:THR:HG23	1.66	0.60

There are no symmetry-related clashes.

## 5.3 Torsion angles [i](#)

### 5.3.1 Protein backbone [i](#)

In the following table, the Percentiles column shows the percent Ramachandran outliers of the chain as a percentile score with respect to all X-ray entries followed by that with respect to entries of similar resolution.

The Analysed column shows the number of residues for which the backbone conformation was analysed, and the total number of residues.

Mol	Chain	Analysed	Favoured	Allowed	Outliers	Percentiles	
1	A	513/564 (91%)	500 (98%)	12 (2%)	1 (0%)	47	44
1	B	486/564 (86%)	474 (98%)	11 (2%)	1 (0%)	47	44
All	All	999/1128 (89%)	974 (98%)	23 (2%)	2 (0%)	47	44

All (2) Ramachandran outliers are listed below:

Mol	Chain	Res	Type
1	A	172	ASP
1	B	93	LYS

### 5.3.2 Protein sidechains [i](#)

In the following table, the Percentiles column shows the percent sidechain outliers of the chain as a percentile score with respect to all X-ray entries followed by that with respect to entries of similar resolution.

The Analysed column shows the number of residues for which the sidechain conformation was analysed, and the total number of residues.

Mol	Chain	Analysed	Rotameric	Outliers	Percentiles	
1	A	410/448 (92%)	402 (98%)	8 (2%)	55	58
1	B	387/448 (86%)	386 (100%)	1 (0%)	92	95
All	All	797/896 (89%)	788 (99%)	9 (1%)	73	78

5 of 9 residues with a non-rotameric sidechain are listed below:

Mol	Chain	Res	Type
1	A	441	ARG
1	B	175	ARG
1	A	173	ARG
1	A	349	SER
1	A	354	ILE

Sometimes sidechains can be flipped to improve hydrogen bonding and reduce clashes. All (1) such sidechains are listed below:

Mol	Chain	Res	Type
1	A	212	ASN

### 5.3.3 RNA [i](#)

There are no RNA molecules in this entry.

## 5.4 Non-standard residues in protein, DNA, RNA chains [i](#)

There are no non-standard protein/DNA/RNA residues in this entry.

## 5.5 Carbohydrates [i](#)

There are no monosaccharides in this entry.

## 5.6 Ligand geometry

Of 11 ligands modelled in this entry, 4 are monoatomic - leaving 7 for Mogul analysis.

In the following table, the Counts columns list the number of bonds (or angles) for which Mogul statistics could be retrieved, the number of bonds (or angles) that are observed in the model and the number of bonds (or angles) that are defined in the Chemical Component Dictionary. The Link column lists molecule types, if any, to which the group is linked. The Z score for a bond length (or angle) is the number of standard deviations the observed value is removed from the expected value. A bond length (or angle) with  $|Z| > 2$  is considered an outlier worth inspection. RMSZ is the root-mean-square of all Z scores of the bond lengths (or angles).

Mol	Type	Chain	Res	Link	Bond lengths			Bond angles		
					Counts	RMSZ	# Z  > 2	Counts	RMSZ	# Z  > 2
5	IMD	B	607	-	3,5,5	0.31	0	4,5,5	0.65	0
2	59H	B	601	1	29,34,34	2.85	9 (31%)	36,49,49	2.28	9 (25%)
3	GOL	B	602	-	5,5,5	0.18	0	5,5,5	0.61	0
3	GOL	B	603	-	5,5,5	0.30	0	5,5,5	0.38	0
2	59H	A	601	1	29,34,34	2.78	9 (31%)	36,49,49	2.11	10 (27%)
5	IMD	A	604	-	3,5,5	0.32	0	4,5,5	0.62	0
3	GOL	A	602	-	5,5,5	0.32	0	5,5,5	0.96	0

In the following table, the Chirals column lists the number of chiral outliers, the number of chiral centers analysed, the number of these observed in the model and the number defined in the Chemical Component Dictionary. Similar counts are reported in the Torsion and Rings columns. '-' means no outliers of that kind were identified.

Mol	Type	Chain	Res	Link	Chirals	Torsions	Rings
5	IMD	B	607	-	-	-	0/1/1/1
2	59H	B	601	1	-	3/24/55/55	0/3/3/3
3	GOL	B	602	-	-	2/4/4/4	-
3	GOL	B	603	-	-	4/4/4/4	-
2	59H	A	601	1	-	3/24/55/55	0/3/3/3
5	IMD	A	604	-	-	-	0/1/1/1
3	GOL	A	602	-	-	2/4/4/4	-

The worst 5 of 18 bond length outliers are listed below:

Mol	Chain	Res	Type	Atoms	Z	Observed(Å)	Ideal(Å)
2	B	601	59H	CX2-CX1	8.77	1.53	1.39
2	A	601	59H	CX2-CX1	8.72	1.53	1.39
2	B	601	59H	CX5-CX6	5.84	1.51	1.38
2	A	601	59H	CX5-CX6	5.76	1.51	1.38
2	B	601	59H	C-N1	4.82	1.44	1.34

The worst 5 of 19 bond angle outliers are listed below:

Mol	Chain	Res	Type	Atoms	Z	Observed(°)	Ideal(°)
2	B	601	59H	CX9-NX2-CXA	-6.38	107.06	113.60
2	B	601	59H	CX8-NX1-CX7	5.68	127.30	118.66
2	A	601	59H	CX9-NX2-CXA	-4.96	108.51	113.60
2	A	601	59H	CX8-NX1-CX7	4.94	126.17	118.66
2	B	601	59H	CX1-CA-C	4.81	118.96	108.16

There are no chirality outliers.

5 of 14 torsion outliers are listed below:

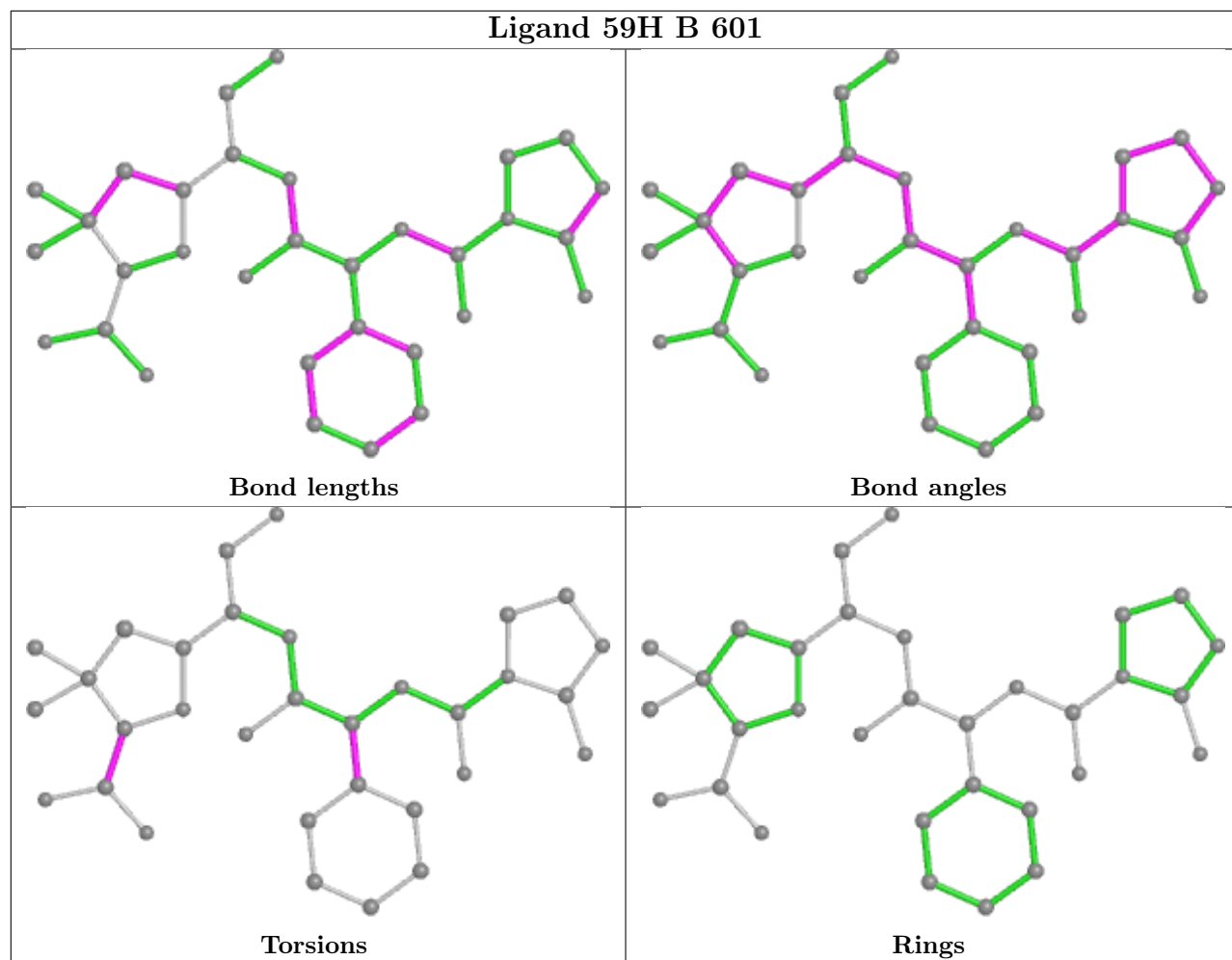
Mol	Chain	Res	Type	Atoms
3	A	602	GOL	C1-C2-C3-O3
3	A	602	GOL	O2-C2-C3-O3
3	B	602	GOL	O1-C1-C2-O2
3	B	602	GOL	O1-C1-C2-C3
3	B	603	GOL	O1-C1-C2-C3

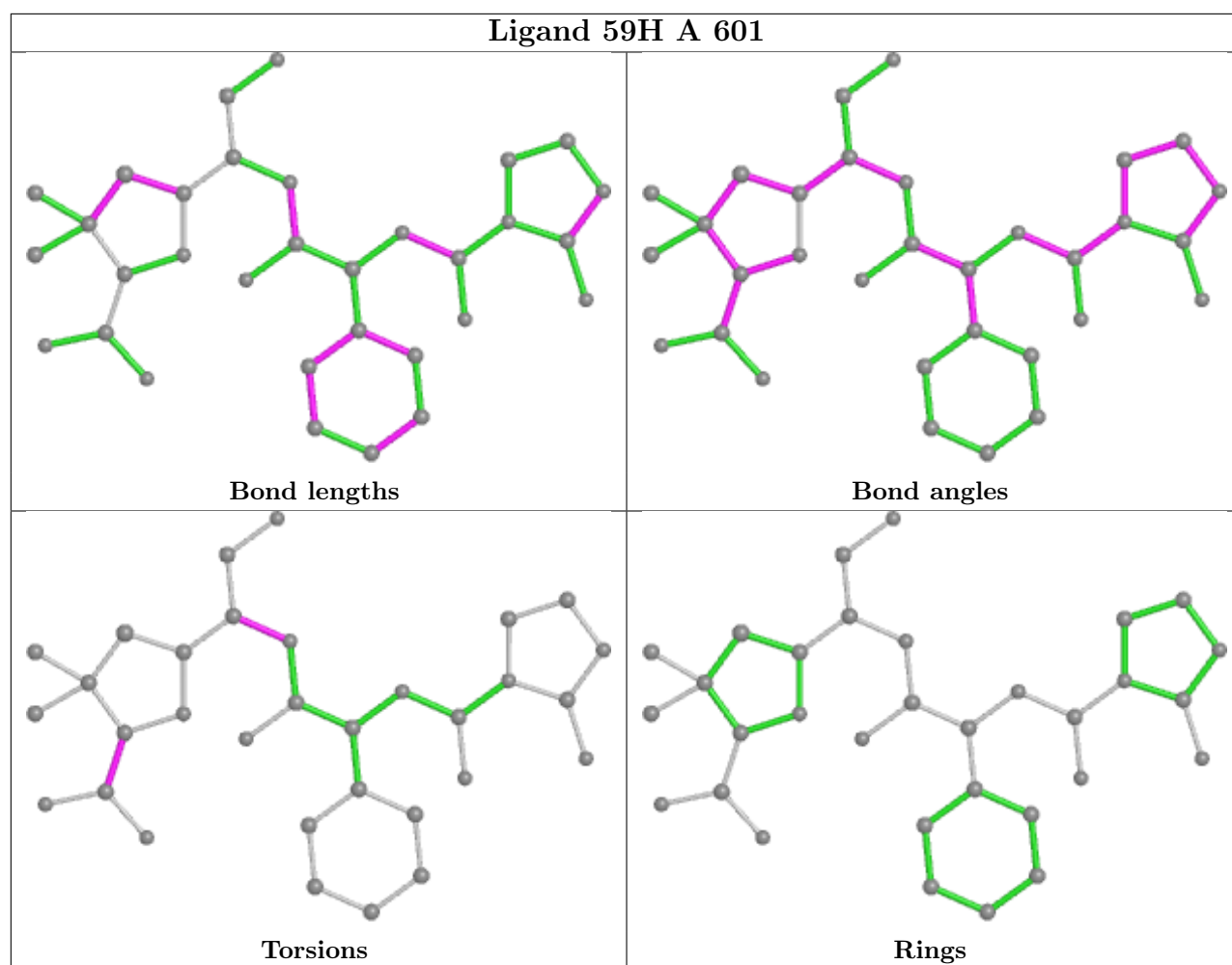
There are no ring outliers.

3 monomers are involved in 7 short contacts:

Mol	Chain	Res	Type	Clashes	Symm-Clashes
3	B	602	GOL	2	0
3	B	603	GOL	3	0
3	A	602	GOL	2	0

The following is a two-dimensional graphical depiction of Mogul quality analysis of bond lengths, bond angles, torsion angles, and ring geometry for all instances of the Ligand of Interest. In addition, ligands with molecular weight > 250 and outliers as shown on the validation Tables will also be included. For torsion angles, if less than 5% of the Mogul distribution of torsion angles is within 10 degrees of the torsion angle in question, then that torsion angle is considered an outlier. Any bond that is central to one or more torsion angles identified as an outlier by Mogul will be highlighted in the graph. For rings, the root-mean-square deviation (RMSD) between the ring in question and similar rings identified by Mogul is calculated over all ring torsion angles. If the average RMSD is greater than 60 degrees and the minimal RMSD between the ring in question and any Mogul-identified rings is also greater than 60 degrees, then that ring is considered an outlier. The outliers are highlighted in purple. The color gray indicates Mogul did not find sufficient equivalents in the CSD to analyse the geometry.





## 5.7 Other polymers [i](#)

There are no such residues in this entry.

## 5.8 Polymer linkage issues [i](#)

There are no chain breaks in this entry.

## 6 Fit of model and data [i](#)

### 6.1 Protein, DNA and RNA chains [i](#)

In the following table, the column labelled ‘#RSRZ > 2’ contains the number (and percentage) of RSRZ outliers, followed by percent RSRZ outliers for the chain as percentile scores relative to all X-ray entries and entries of similar resolution. The OWAB column contains the minimum, median, 95<sup>th</sup> percentile and maximum values of the occupancy-weighted average B-factor per residue. The column labelled ‘Q < 0.9’ lists the number of (and percentage) of residues with an average occupancy less than 0.9.

Mol	Chain	Analysed	<RSRZ>	#RSRZ>2	OWAB(Å <sup>2</sup> )	Q<0.9
1	A	515/564 (91%)	-0.02	16 (3%) 49 48	15, 33, 68, 111	0
1	B	490/564 (86%)	0.29	40 (8%) 11 11	16, 37, 79, 104	0
All	All	1005/1128 (89%)	0.14	56 (5%) 24 23	15, 34, 76, 111	0

The worst 5 of 56 RSRZ outliers are listed below:

Mol	Chain	Res	Type	RSRZ
1	B	213	ALA	6.6
1	A	50	ALA	6.1
1	A	564	THR	5.9
1	B	192	LYS	4.8
1	B	146	TYR	4.8

### 6.2 Non-standard residues in protein, DNA, RNA chains [i](#)

There are no non-standard protein/DNA/RNA residues in this entry.

### 6.3 Carbohydrates [i](#)

There are no monosaccharides in this entry.

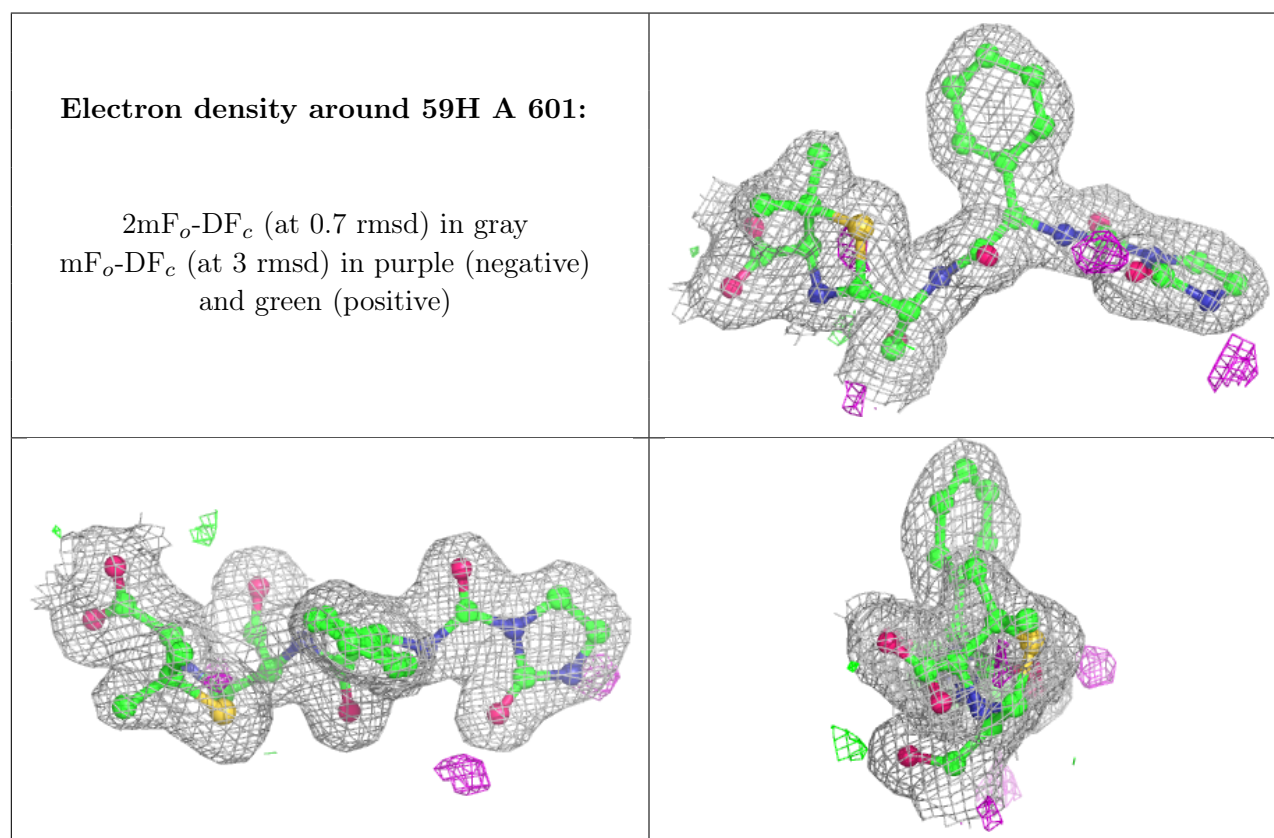
### 6.4 Ligands [i](#)

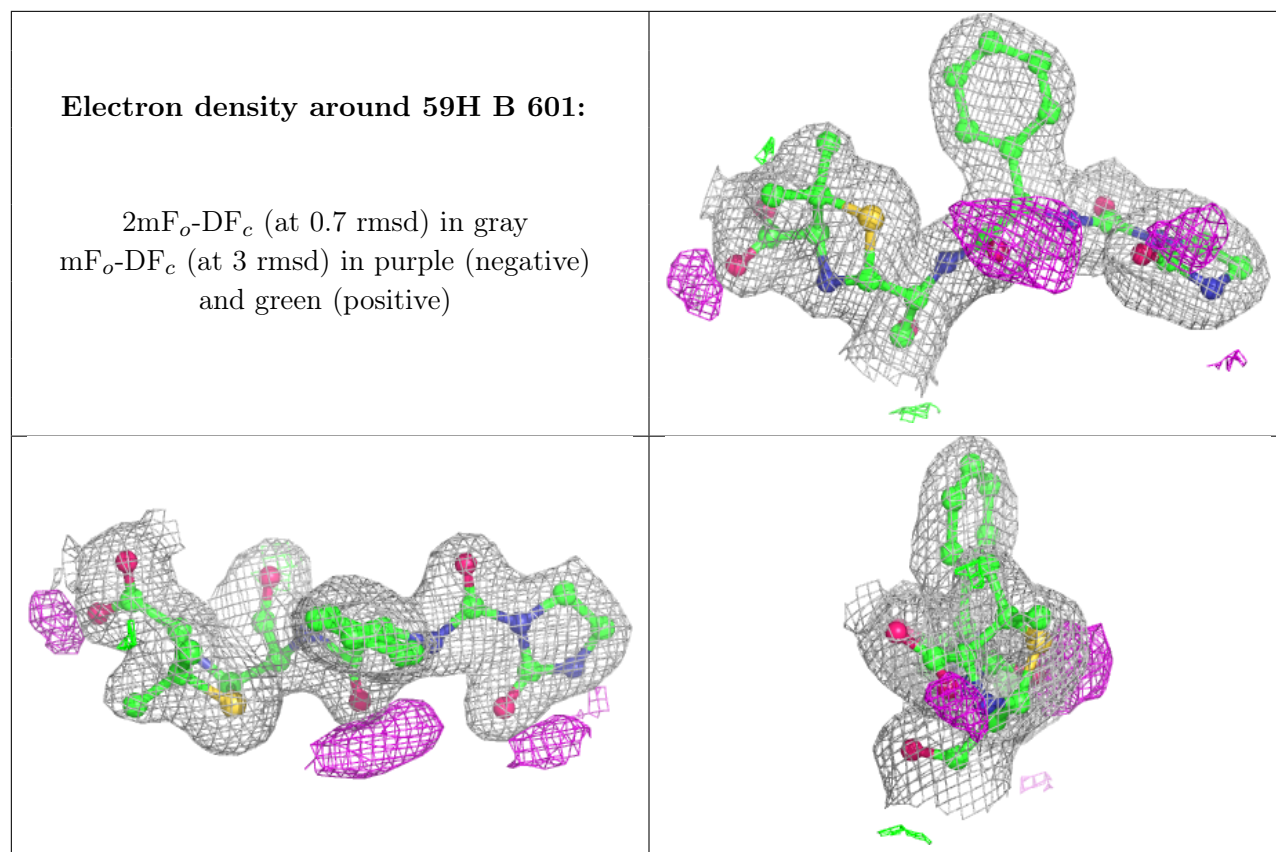
In the following table, the Atoms column lists the number of modelled atoms in the group and the number defined in the chemical component dictionary. The B-factors column lists the minimum, median, 95<sup>th</sup> percentile and maximum values of B factors of atoms in the group. The column labelled ‘Q < 0.9’ lists the number of atoms with occupancy less than 0.9.



Mol	Type	Chain	Res	Atoms	RSCC	RSR	B-factors( $\text{\AA}^2$ )	Q<0.9
3	GOL	B	603	6/6	0.85	0.17	47,53,57,59	0
3	GOL	B	602	6/6	0.91	0.19	29,39,48,48	0
5	IMD	B	607	5/5	0.92	0.13	48,55,62,63	0
5	IMD	A	604	5/5	0.94	0.07	49,52,57,59	0
3	GOL	A	602	6/6	0.94	0.16	21,26,32,38	0
4	CL	A	603	1/1	0.95	0.10	55,55,55,55	0
4	CL	B	604	1/1	0.96	0.06	47,47,47,47	0
2	59H	A	601	32/32	0.96	0.10	23,29,35,38	0
2	59H	B	601	32/32	0.96	0.11	28,34,37,41	0
4	CL	B	605	1/1	0.98	0.06	39,39,39,39	0
4	CL	B	606	1/1	0.99	0.07	35,35,35,35	0

The following is a graphical depiction of the model fit to experimental electron density of all instances of the Ligand of Interest. In addition, ligands with molecular weight > 250 and outliers as shown on the geometry validation Tables will also be included. Each fit is shown from different orientation to approximate a three-dimensional view.





## 6.5 Other polymers [i](#)

There are no such residues in this entry.