



Full wwPDB X-ray Structure Validation Report ⓘ

Sep 5, 2023 – 06:40 PM EDT

PDB ID : 4DFU
Title : Inhibition of an antibiotic resistance enzyme: crystal structure of aminoglycoside phosphotransferase APH(2'')-ID/APH(2'')-IVA in complex with kanamycin inhibited with quercetin
Authors : Stogios, P.J.; Minasov, G.; Dong, A.; Evdokimova, E.; Egorova, E.; Di Leo, R.; Li, H.; Shakya, T.; Wright, G.D.; Savchenko, A.; Anderson, W.F.; Center for Structural Genomics of Infectious Diseases (CSGID)
Deposited on : 2012-01-24
Resolution : 1.98 Å(reported)

This is a Full wwPDB X-ray Structure Validation Report for a publicly released PDB entry.

We welcome your comments at validation@mail.wwpdb.org

A user guide is available at

<https://www.wwpdb.org/validation/2017/XrayValidationReportHelp>

with specific help available everywhere you see the ⓘ symbol.

The types of validation reports are described at

<http://www.wwpdb.org/validation/2017/FAQs#types>.

The following versions of software and data (see [references ⓘ](#)) were used in the production of this report:

MolProbity : 4.02b-467
Mogul : 1.8.5 (274361), CSD as541be (2020)
Xtriage (Phenix) : 1.13
EDS : 2.35
buster-report : 1.1.7 (2018)
Percentile statistics : 20191225.v01 (using entries in the PDB archive December 25th 2019)
Refmac : 5.8.0158
CCP4 : 7.0.044 (Gargrove)
Ideal geometry (proteins) : Engh & Huber (2001)

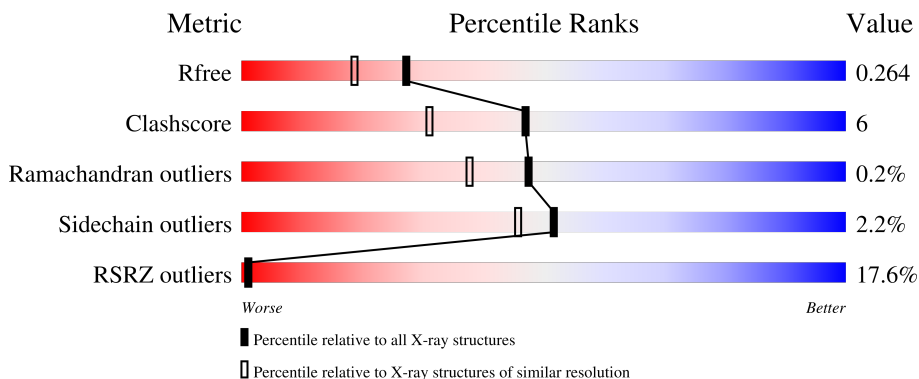
1 Overall quality at a glance

The following experimental techniques were used to determine the structure:

X-RAY DIFFRACTION

The reported resolution of this entry is 1.98 Å.

Percentile scores (ranging between 0-100) for global validation metrics of the entry are shown in the following graphic. The table shows the number of entries on which the scores are based.



Metric	Whole archive (#Entries)	Similar resolution (#Entries, resolution range(Å))
R_{free}	130704	11647 (2.00-1.96)
Clashscore	141614	1014 (1.98-1.98)
Ramachandran outliers	138981	1006 (1.98-1.98)
Sidechain outliers	138945	1006 (1.98-1.98)
RSRZ outliers	127900	11410 (2.00-1.96)

The table below summarises the geometric issues observed across the polymeric chains and their fit to the electron density. The red, orange, yellow and green segments of the lower bar indicate the fraction of residues that contain outliers for ≥ 3 , 2, 1 and 0 types of geometric quality criteria respectively. A grey segment represents the fraction of residues that are not modelled. The numeric value for each fraction is indicated below the corresponding segment, with a dot representing fractions $\leq 5\%$. The upper red bar (where present) indicates the fraction of residues that have poor fit to the electron density. The numeric value is given above the bar.

Mol	Chain	Length	Quality of chain
1	A	322	
1	B	322	

The following table lists non-polymeric compounds, carbohydrate monomers and non-standard

Ideal geometry (DNA, RNA) : Parkinson et al. (1996)
 Validation Pipeline (wwPDB-VP) : 2.35

residues in protein, DNA, RNA chains that are outliers for geometric or electron-density-fit criteria:

Mol	Type	Chain	Res	Chirality	Geometry	Clashes	Electron density
3	QUE	A	402	-	-	-	X
3	QUE	B	403	-	-	-	X

2 Entry composition

There are 5 unique types of molecules in this entry. The entry contains 5268 atoms, of which 0 are hydrogens and 0 are deuteriums.

In the tables below, the ZeroOcc column contains the number of atoms modelled with zero occupancy, the AltConf column contains the number of residues with at least one atom in alternate conformation and the Trace column contains the number of residues modelled with at most 2 atoms.

- Molecule 1 is a protein called APH(2^{''})-Id.

Mol	Chain	Residues	Atoms						ZeroOcc	AltConf	Trace
			Total	C	N	O	S	Se			
1	A	296	2485	1603	400	470	3	9	0	5	0
1	B	297	2459	1587	396	466	3	7	0	0	0

There are 42 discrepancies between the modelled and reference sequences:

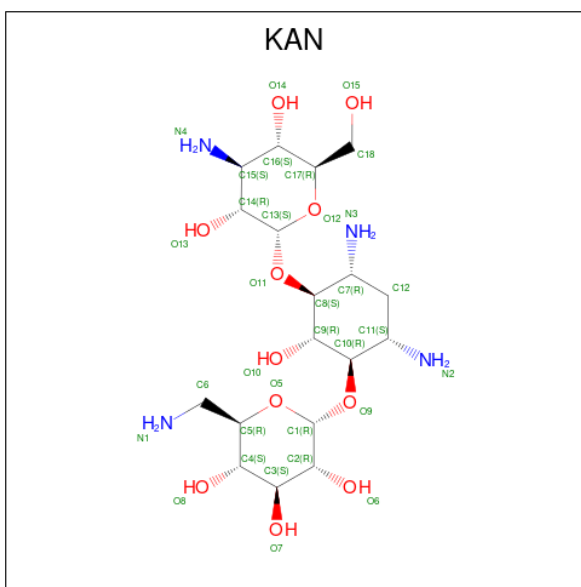
Chain	Residue	Modelled	Actual	Comment	Reference
A	-20	MSE	-	expression tag	UNP O68183
A	-19	GLY	-	expression tag	UNP O68183
A	-18	SER	-	expression tag	UNP O68183
A	-17	SER	-	expression tag	UNP O68183
A	-16	HIS	-	expression tag	UNP O68183
A	-15	HIS	-	expression tag	UNP O68183
A	-14	HIS	-	expression tag	UNP O68183
A	-13	HIS	-	expression tag	UNP O68183
A	-12	HIS	-	expression tag	UNP O68183
A	-11	HIS	-	expression tag	UNP O68183
A	-10	SER	-	expression tag	UNP O68183
A	-9	SER	-	expression tag	UNP O68183
A	-8	GLY	-	expression tag	UNP O68183
A	-7	ARG	-	expression tag	UNP O68183
A	-6	GLU	-	expression tag	UNP O68183
A	-5	ASN	-	expression tag	UNP O68183
A	-4	LEU	-	expression tag	UNP O68183
A	-3	TYR	-	expression tag	UNP O68183
A	-2	PHE	-	expression tag	UNP O68183
A	-1	GLN	-	expression tag	UNP O68183
A	0	GLY	-	expression tag	UNP O68183
B	-20	MSE	-	expression tag	UNP O68183
B	-19	GLY	-	expression tag	UNP O68183
B	-18	SER	-	expression tag	UNP O68183
B	-17	SER	-	expression tag	UNP O68183

Continued on next page...

Continued from previous page...

Chain	Residue	Modelled	Actual	Comment	Reference
B	-16	HIS	-	expression tag	UNP O68183
B	-15	HIS	-	expression tag	UNP O68183
B	-14	HIS	-	expression tag	UNP O68183
B	-13	HIS	-	expression tag	UNP O68183
B	-12	HIS	-	expression tag	UNP O68183
B	-11	HIS	-	expression tag	UNP O68183
B	-10	SER	-	expression tag	UNP O68183
B	-9	SER	-	expression tag	UNP O68183
B	-8	GLY	-	expression tag	UNP O68183
B	-7	ARG	-	expression tag	UNP O68183
B	-6	GLU	-	expression tag	UNP O68183
B	-5	ASN	-	expression tag	UNP O68183
B	-4	LEU	-	expression tag	UNP O68183
B	-3	TYR	-	expression tag	UNP O68183
B	-2	PHE	-	expression tag	UNP O68183
B	-1	GLN	-	expression tag	UNP O68183
B	0	GLY	-	expression tag	UNP O68183

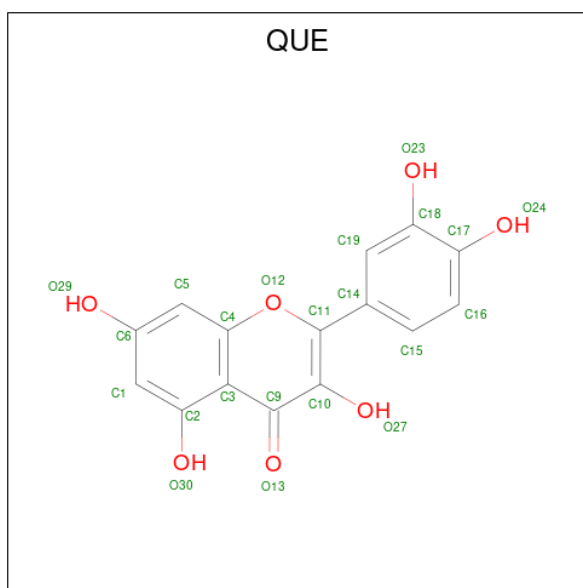
- Molecule 2 is KANAMYCIN A (three-letter code: KAN) (formula: $C_{18}H_{36}N_4O_{11}$).



Mol	Chain	Residues	Atoms				ZeroOcc	AltConf
2	A	1	Total	C	N	O	0	0
			33	18	4	11		
2	B	1	Total	C	N	O	0	0
			33	18	4	11		

- Molecule 3 is 3,5,7,3',4'-PENTAHYDROXYFLAVONE (three-letter code: QUE) (formula:

C₁₅H₁₀O₇).



Mol	Chain	Residues	Atoms	ZeroOcc	AltConf
3	A	1	Total C O 22 15 7	0	0
3	B	1	Total C O 44 30 14	0	1
3	B	1	Total C O 22 15 7	0	0

- Molecule 4 is CHLORIDE ION (three-letter code: CL) (formula: Cl).

Mol	Chain	Residues	Atoms	ZeroOcc	AltConf
4	A	1	Total Cl 1 1	0	0
4	B	1	Total Cl 1 1	0	0

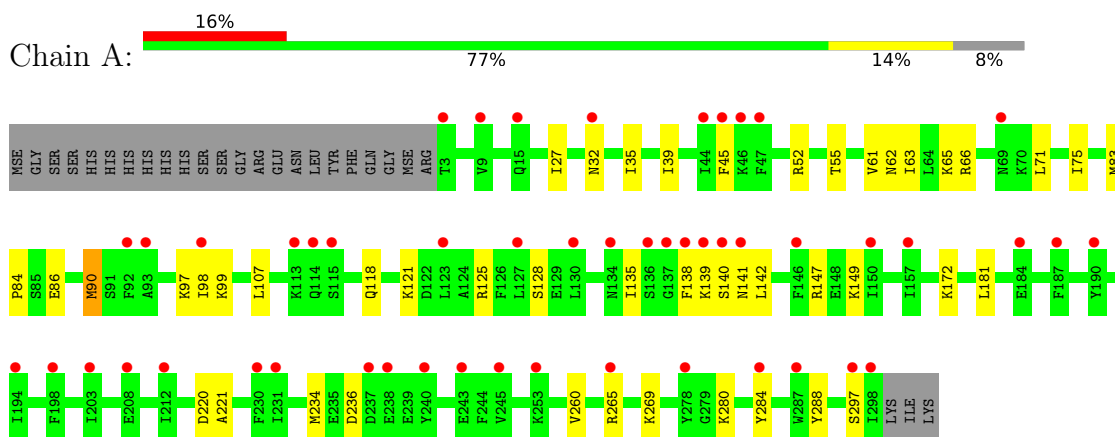
- Molecule 5 is water.

Mol	Chain	Residues	Atoms	ZeroOcc	AltConf
5	A	74	Total O 74 74	0	0
5	B	94	Total O 94 94	0	0

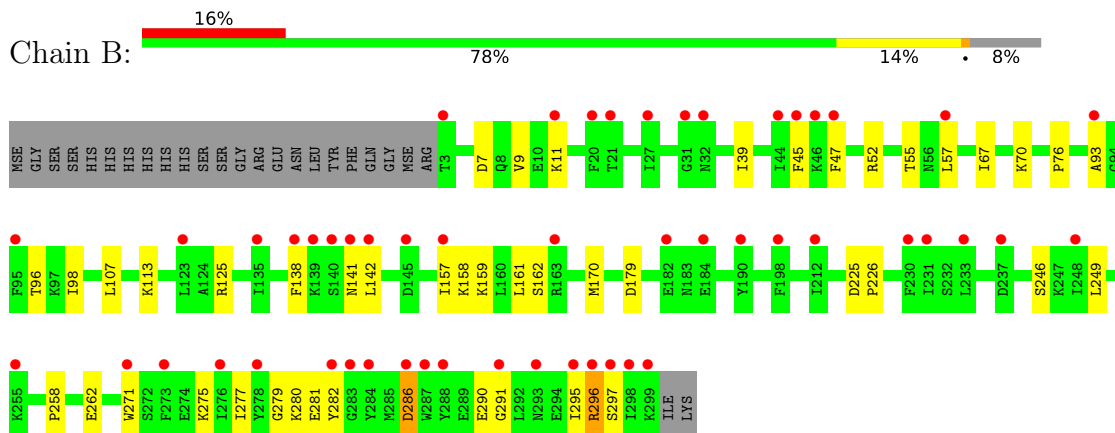
3 Residue-property plots [i](#)

These plots are drawn for all protein, RNA, DNA and oligosaccharide chains in the entry. The first graphic for a chain summarises the proportions of the various outlier classes displayed in the second graphic. The second graphic shows the sequence view annotated by issues in geometry and electron density. Residues are color-coded according to the number of geometric quality criteria for which they contain at least one outlier: green = 0, yellow = 1, orange = 2 and red = 3 or more. A red dot above a residue indicates a poor fit to the electron density ($RSRZ > 2$). Stretches of 2 or more consecutive residues without any outlier are shown as a green connector. Residues present in the sample, but not in the model, are shown in grey.

- Molecule 1: APH(2⁺)-Id



- Molecule 1: APH(2⁺)-Id



4 Data and refinement statistics

Property	Value	Source
Space group	P 1 21 1	Depositor
Cell constants a, b, c, α , β , γ	43.14Å 101.81Å 70.25Å 90.00° 96.86° 90.00°	Depositor
Resolution (Å)	19.84 – 1.98 19.84 – 1.98	Depositor EDS
% Data completeness (in resolution range)	98.8 (19.84-1.98) 91.0 (19.84-1.98)	Depositor EDS
R_{merge}	(Not available)	Depositor
R_{sym}	0.04	Depositor
$\langle I/\sigma(I) \rangle$ ¹	1.60 (at 1.97Å)	Xtrriage
Refinement program	PHENIX (phenix.refine: 1.7.3_928)	Depositor
R, R_{free}	0.219 , 0.270 0.214 , 0.264	Depositor DCC
R_{free} test set	1947 reflections (4.74%)	wwPDB-VP
Wilson B-factor (Å ²)	35.3	Xtrriage
Anisotropy	0.460	Xtrriage
Bulk solvent k_{sol} (e/Å ³), B_{sol} (Å ²)	0.36 , 68.0	EDS
L-test for twinning ²	$\langle L \rangle = 0.50$, $\langle L^2 \rangle = 0.33$	Xtrriage
Estimated twinning fraction	No twinning to report.	Xtrriage
F_o, F_c correlation	0.95	EDS
Total number of atoms	5268	wwPDB-VP
Average B, all atoms (Å ²)	68.0	wwPDB-VP

Xtrriage's analysis on translational NCS is as follows: *The largest off-origin peak in the Patterson function is 5.71% of the height of the origin peak. No significant pseudotranslation is detected.*

¹Intensities estimated from amplitudes.

²Theoretical values of $\langle |L| \rangle$, $\langle L^2 \rangle$ for acentric reflections are 0.5, 0.333 respectively for untwinned datasets, and 0.375, 0.2 for perfectly twinned datasets.

5 Model quality [i](#)

5.1 Standard geometry [i](#)

Bond lengths and bond angles in the following residue types are not validated in this section: KAN, QUE, CL

The Z score for a bond length (or angle) is the number of standard deviations the observed value is removed from the expected value. A bond length (or angle) with $|Z| > 5$ is considered an outlier worth inspection. RMSZ is the root-mean-square of all Z scores of the bond lengths (or angles).

Mol	Chain	Bond lengths		Bond angles	
		RMSZ	# Z >5	RMSZ	# Z >5
1	A	0.38	0/2543	0.53	0/3416
1	B	0.41	0/2511	0.52	0/3373
All	All	0.39	0/5054	0.52	0/6789

There are no bond length outliers.

There are no bond angle outliers.

There are no chirality outliers.

There are no planarity outliers.

5.2 Too-close contacts [i](#)

In the following table, the Non-H and H(model) columns list the number of non-hydrogen atoms and hydrogen atoms in the chain respectively. The H(added) column lists the number of hydrogen atoms added and optimized by MolProbity. The Clashes column lists the number of clashes within the asymmetric unit, whereas Symm-Clashes lists symmetry-related clashes.

Mol	Chain	Non-H	H(model)	H(added)	Clashes	Symm-Clashes
1	A	2485	0	2445	31	0
1	B	2459	0	2417	31	0
2	A	33	0	36	1	0
2	B	33	0	36	0	0
3	A	22	0	7	2	0
3	B	66	0	19	12	0
4	A	1	0	0	0	0
4	B	1	0	0	0	0
5	A	74	0	0	1	0
5	B	94	0	0	1	0
All	All	5268	0	4960	62	0

The all-atom clashscore is defined as the number of clashes found per 1000 atoms (including hydrogen atoms). The all-atom clashscore for this structure is 6.

All (62) close contacts within the same asymmetric unit are listed below, sorted by their clash magnitude.

Atom-1	Atom-2	Interatomic distance (Å)	Clash overlap (Å)
1:A:140:SER:HB3	1:B:141:ASN:HA	1.63	0.81
1:A:62[B]:ASN:OD1	1:A:66:ARG:NH1	2.15	0.80
1:A:98:ILE:N	3:A:402:QUE:O13	2.16	0.78
1:A:98:ILE:O	3:A:402:QUE:O27	2.07	0.70
1:A:147:ARG:NH2	1:A:181:LEU:O	2.26	0.68
1:B:138:PHE:HB3	1:B:142:LEU:HD12	1.75	0.67
1:A:172:LYS:NZ	1:A:297:SER:O	2.28	0.66
1:A:234:MSE:HE1	1:A:260:VAL:HG12	1.79	0.64
1:B:52:ARG:NE	1:B:281:GLU:OE1	2.32	0.63
1:A:32:ASN:ND2	1:A:284:TYR:OH	2.31	0.62
1:B:67:ILE:HA	1:B:70:LYS:HD2	1.83	0.60
1:B:161:LEU:HB2	1:B:170:MSE:HE1	1.86	0.58
1:A:62[B]:ASN:HD21	1:A:142:LEU:HD11	1.70	0.55
1:A:63:ILE:HD13	1:A:221:ALA:HB3	1.88	0.54
1:B:7:ASP:O	1:B:11:LYS:HG3	2.07	0.54
1:B:162:SER:HA	1:B:170:MSE:HE3	1.89	0.53
1:A:66:ARG:HH22	1:A:139:LYS:HG3	1.74	0.53
1:B:281:GLU:HG2	1:B:282:TYR:CD2	2.45	0.52
1:B:258:PRO:O	1:B:262:GLU:HG3	2.09	0.52
1:B:98:ILE:N	3:B:403:QUE:O13	2.21	0.51
1:B:271:TRP:NE1	1:B:275:LYS:HD2	2.27	0.50
1:A:220:ASP:OD2	2:A:401:KAN:N4	2.40	0.50
1:A:55:THR:HG21	3:B:401[B]:QUE:C9	2.42	0.49
1:A:83[A]:MSE:HE2	1:A:84:PRO:HD3	1.93	0.49
1:B:39:ILE:HD12	1:B:45:PHE:CD1	2.48	0.49
1:B:55:THR:HG21	3:B:401[A]:QUE:C9	2.42	0.48
1:A:61:VAL:HG21	1:A:90:MSE:CE	2.44	0.47
1:A:118:GLN:NE2	1:A:121:LYS:HD3	2.29	0.47
3:B:403:QUE:O27	3:B:403:QUE:H19	2.14	0.47
1:A:265:ARG:HG2	1:A:269:LYS:HE3	1.97	0.47
1:B:246:SER:HA	1:B:249:LEU:HD12	1.96	0.47
1:A:141:ASN:ND2	1:B:141:ASN:HB3	2.30	0.46
1:B:76:PRO:HB3	3:B:403:QUE:H1	1.97	0.46
1:B:296:ARG:HG3	1:B:297:SER:N	2.31	0.46
1:A:27:ILE:HG12	1:A:35:ILE:HD11	1.98	0.46
1:A:83[A]:MSE:HE3	1:B:159:LYS:HD3	1.98	0.45
1:A:135:ILE:O	1:A:138:PHE:HB2	2.17	0.45

Continued on next page...

Continued from previous page...

Atom-1	Atom-2	Interatomic distance (Å)	Clash overlap (Å)
1:A:65[A]:LYS:NZ	5:A:529:HOH:O	2.50	0.45
1:B:158:LYS:O	1:B:162:SER:HB3	2.17	0.44
1:B:286:ASP:O	1:B:290:GLU:HG3	2.17	0.44
3:B:401[B]:QUE:H15	3:B:401[B]:QUE:O27	2.18	0.44
1:A:280:LYS:HG2	1:A:288:TYR:CD1	2.53	0.44
1:B:96:THR:O	3:B:403:QUE:O30	2.35	0.44
1:A:86:GLU:H	1:A:86:GLU:CD	2.21	0.43
1:A:97:LYS:HD3	1:A:99:LYS:HZ3	1.82	0.43
1:A:55:THR:HG21	3:B:401[B]:QUE:C10	2.48	0.43
1:B:9:VAL:HG13	1:B:47:PHE:CE1	2.54	0.43
1:A:39:ILE:HD12	1:A:45:PHE:CD1	2.54	0.42
1:A:66:ARG:NH2	1:A:139:LYS:HG3	2.33	0.42
1:A:118:GLN:HE22	1:A:121:LYS:HD3	1.83	0.42
1:A:71:LEU:HD12	1:A:75:ILE:HD13	2.01	0.42
1:B:125:ARG:HD2	5:B:575:HOH:O	2.19	0.42
1:B:98:ILE:O	3:B:403:QUE:O27	2.37	0.41
1:B:52:ARG:NE	3:B:401[B]:QUE:O24	2.53	0.41
1:B:296:ARG:HG3	1:B:297:SER:H	1.84	0.41
1:A:55:THR:HG21	3:B:401[A]:QUE:C11	2.50	0.41
1:B:291:GLY:O	1:B:295:ILE:HG12	2.20	0.41
3:B:403:QUE:O13	3:B:403:QUE:O30	2.38	0.41
1:B:57:LEU:HD11	1:B:93:ALA:HB3	2.04	0.40
1:B:157:ILE:HG12	1:B:277:ILE:HD11	2.02	0.40
1:B:113:LYS:HE3	1:B:113:LYS:HB2	1.76	0.40
1:B:225:ASP:HA	1:B:226:PRO:HD2	1.92	0.40

There are no symmetry-related clashes.

5.3 Torsion angles [i](#)

5.3.1 Protein backbone [i](#)

In the following table, the Percentiles column shows the percent Ramachandran outliers of the chain as a percentile score with respect to all X-ray entries followed by that with respect to entries of similar resolution.

The Analysed column shows the number of residues for which the backbone conformation was analysed, and the total number of residues.

Mol	Chain	Analysed	Favoured	Allowed	Outliers	Percentiles
1	A	299/322 (93%)	285 (95%)	14 (5%)	0	100 100

Continued on next page...

Continued from previous page...

Mol	Chain	Analysed	Favoured	Allowed	Outliers	Percentiles	
1	B	295/322 (92%)	280 (95%)	14 (5%)	1 (0%)	41	29
All	All	594/644 (92%)	565 (95%)	28 (5%)	1 (0%)	47	38

All (1) Ramachandran outliers are listed below:

Mol	Chain	Res	Type
1	B	279	GLY

5.3.2 Protein sidechains [i](#)

In the following table, the Percentiles column shows the percent sidechain outliers of the chain as a percentile score with respect to all X-ray entries followed by that with respect to entries of similar resolution.

The Analysed column shows the number of residues for which the sidechain conformation was analysed, and the total number of residues.

Mol	Chain	Analysed	Rotameric	Outliers	Percentiles	
1	A	279/288 (97%)	272 (98%)	7 (2%)	47	39
1	B	275/288 (96%)	270 (98%)	5 (2%)	59	51
All	All	554/576 (96%)	542 (98%)	12 (2%)	52	46

All (12) residues with a non-rotameric sidechain are listed below:

Mol	Chain	Res	Type
1	A	52	ARG
1	A	90	MSE
1	A	107	LEU
1	A	125	ARG
1	A	128	SER
1	A	149	LYS
1	A	236	ASP
1	B	107	LEU
1	B	179	ASP
1	B	280	LYS
1	B	286	ASP
1	B	296	ARG

Sometimes sidechains can be flipped to improve hydrogen bonding and reduce clashes. All (4) such sidechains are listed below:

Mol	Chain	Res	Type
1	A	32	ASN
1	A	118	GLN
1	A	141	ASN
1	B	117	ASN

5.3.3 RNA [i](#)

There are no RNA molecules in this entry.

5.4 Non-standard residues in protein, DNA, RNA chains [i](#)

There are no non-standard protein/DNA/RNA residues in this entry.

5.5 Carbohydrates [i](#)

There are no monosaccharides in this entry.

5.6 Ligand geometry [i](#)

Of 8 ligands modelled in this entry, 2 are monoatomic - leaving 6 for Mogul analysis.

In the following table, the Counts columns list the number of bonds (or angles) for which Mogul statistics could be retrieved, the number of bonds (or angles) that are observed in the model and the number of bonds (or angles) that are defined in the Chemical Component Dictionary. The Link column lists molecule types, if any, to which the group is linked. The Z score for a bond length (or angle) is the number of standard deviations the observed value is removed from the expected value. A bond length (or angle) with $|Z| > 2$ is considered an outlier worth inspection. RMSZ is the root-mean-square of all Z scores of the bond lengths (or angles).

Mol	Type	Chain	Res	Link	Bond lengths			Bond angles		
					Counts	RMSZ	# Z > 2	Counts	RMSZ	# Z > 2
3	QUE	B	401[A]	-	21,24,24	1.04	2 (9%)	27,36,36	2.46	3 (11%)
3	QUE	B	401[B]	-	21,24,24	1.05	2 (9%)	27,36,36	2.62	3 (11%)
3	QUE	A	402	-	21,24,24	1.20	3 (14%)	27,36,36	2.51	2 (7%)
2	KAN	B	402	-	35,35,35	0.74	0	46,52,52	1.35	8 (17%)
2	KAN	A	401	-	35,35,35	0.66	0	46,52,52	1.16	7 (15%)
3	QUE	B	403	-	21,24,24	1.16	3 (14%)	27,36,36	2.76	4 (14%)

In the following table, the Chirals column lists the number of chiral outliers, the number of chiral centers analysed, the number of these observed in the model and the number defined in the

Chemical Component Dictionary. Similar counts are reported in the Torsion and Rings columns. '-' means no outliers of that kind were identified.

Mol	Type	Chain	Res	Link	Chirals	Torsions	Rings
3	QUE	B	401[A]	-	-	0/0/4/4	0/3/3/3
3	QUE	B	401[B]	-	-	0/0/4/4	0/3/3/3
3	QUE	A	402	-	-	0/0/4/4	0/3/3/3
2	KAN	B	402	-	-	4/12/72/72	0/3/3/3
2	KAN	A	401	-	-	4/12/72/72	0/3/3/3
3	QUE	B	403	-	-	0/0/4/4	0/3/3/3

All (10) bond length outliers are listed below:

Mol	Chain	Res	Type	Atoms	Z	Observed(Å)	Ideal(Å)
3	A	402	QUE	C19-C18	3.04	1.40	1.37
3	A	402	QUE	O12-C4	-2.41	1.32	1.36
3	B	401[B]	QUE	C19-C18	2.36	1.39	1.37
3	B	403	QUE	C2-C3	-2.35	1.38	1.43
3	B	401[A]	QUE	O12-C4	-2.33	1.33	1.36
3	B	403	QUE	C19-C18	2.31	1.39	1.37
3	B	403	QUE	O12-C4	-2.22	1.33	1.36
3	B	401[B]	QUE	O12-C4	-2.16	1.33	1.36
3	B	401[A]	QUE	C2-C3	-2.14	1.39	1.43
3	A	402	QUE	C3-C4	-2.06	1.38	1.41

All (27) bond angle outliers are listed below:

Mol	Chain	Res	Type	Atoms	Z	Observed(°)	Ideal(°)
3	B	403	QUE	O12-C4-C3	-10.12	111.06	121.03
3	A	402	QUE	O12-C4-C3	-9.67	111.51	121.03
3	B	401[B]	QUE	O12-C4-C3	-9.66	111.51	121.03
3	B	401[A]	QUE	O12-C4-C3	-9.19	111.98	121.03
3	B	403	QUE	O12-C4-C5	8.51	126.13	116.03
3	B	401[B]	QUE	O12-C4-C5	8.18	125.73	116.03
3	A	402	QUE	O12-C4-C5	7.66	125.11	116.03
3	B	401[A]	QUE	O12-C4-C5	7.59	125.03	116.03
2	B	402	KAN	C6-C5-C4	-3.45	106.31	113.10
2	B	402	KAN	O11-C8-C9	3.24	115.89	107.28
3	B	403	QUE	O27-C10-C11	3.07	125.25	119.62
2	B	402	KAN	O9-C10-C9	3.03	115.34	107.28
2	A	401	KAN	O9-C10-C9	2.77	114.65	107.28
2	A	401	KAN	O11-C8-C9	2.76	114.62	107.28
3	B	401[B]	QUE	O27-C10-C11	2.56	124.31	119.62
2	B	402	KAN	C1-O9-C10	2.54	124.26	117.96

Continued on next page...

Continued from previous page...

Mol	Chain	Res	Type	Atoms	Z	Observed(°)	Ideal(°)
3	B	401[A]	QUE	O27-C10-C11	2.47	124.16	119.62
2	A	401	KAN	C18-C17-C16	-2.35	107.49	113.00
2	B	402	KAN	C10-C9-C8	2.35	113.84	108.96
2	B	402	KAN	O5-C5-C6	2.33	110.34	106.01
2	A	401	KAN	C1-O9-C10	2.29	123.64	117.96
2	B	402	KAN	C16-C15-C14	-2.28	106.11	111.06
2	A	401	KAN	C4-C3-C2	-2.16	107.04	110.82
2	B	402	KAN	C18-C17-C16	-2.12	108.04	113.00
2	A	401	KAN	C16-C15-C14	-2.10	106.49	111.06
2	A	401	KAN	C13-C14-C15	2.05	113.15	110.40
3	B	403	QUE	C6-C5-C4	-2.01	117.60	120.42

There are no chirality outliers.

All (8) torsion outliers are listed below:

Mol	Chain	Res	Type	Atoms
2	A	401	KAN	C9-C10-O9-C1
2	B	402	KAN	C9-C10-O9-C1
2	A	401	KAN	C11-C10-O9-C1
2	B	402	KAN	C11-C10-O9-C1
2	B	402	KAN	C2-C1-O9-C10
2	B	402	KAN	O5-C1-O9-C10
2	A	401	KAN	C2-C1-O9-C10
2	A	401	KAN	O5-C1-O9-C10

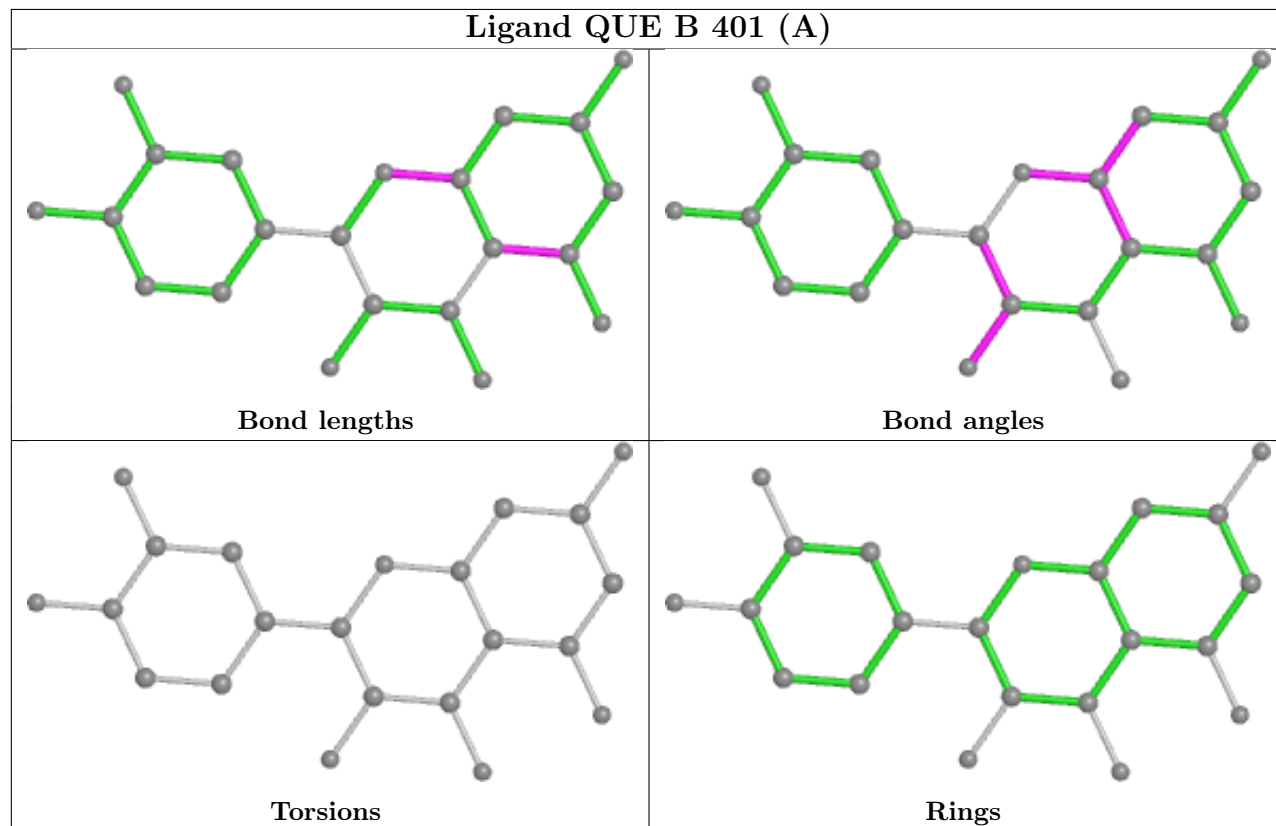
There are no ring outliers.

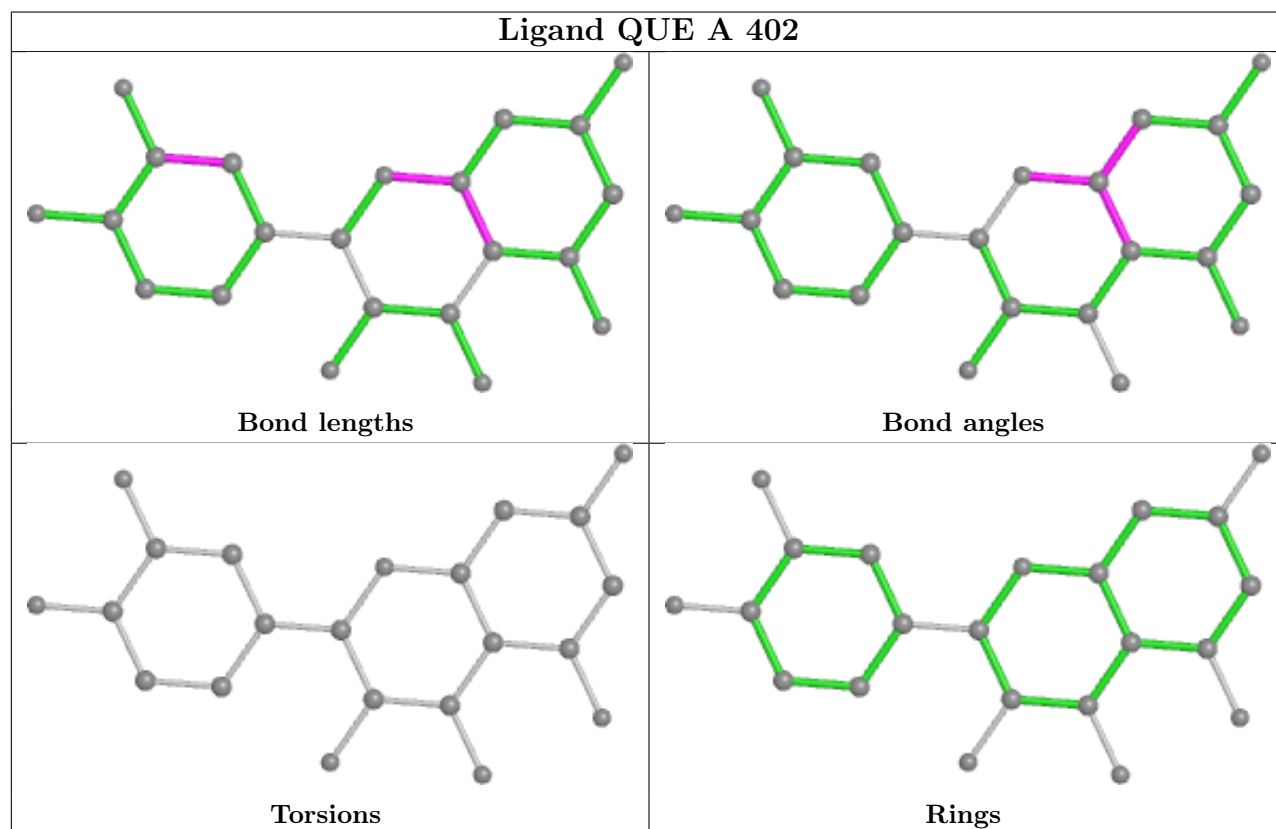
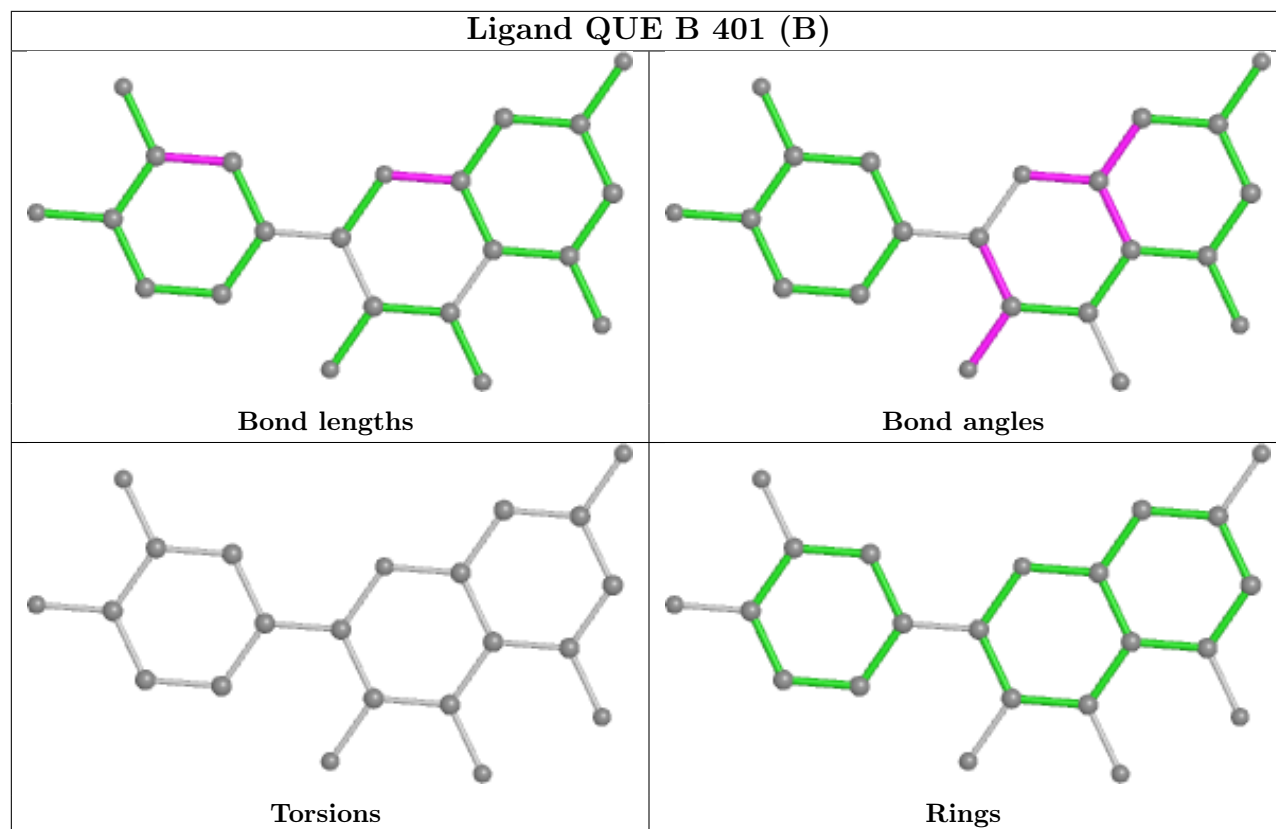
5 monomers are involved in 15 short contacts:

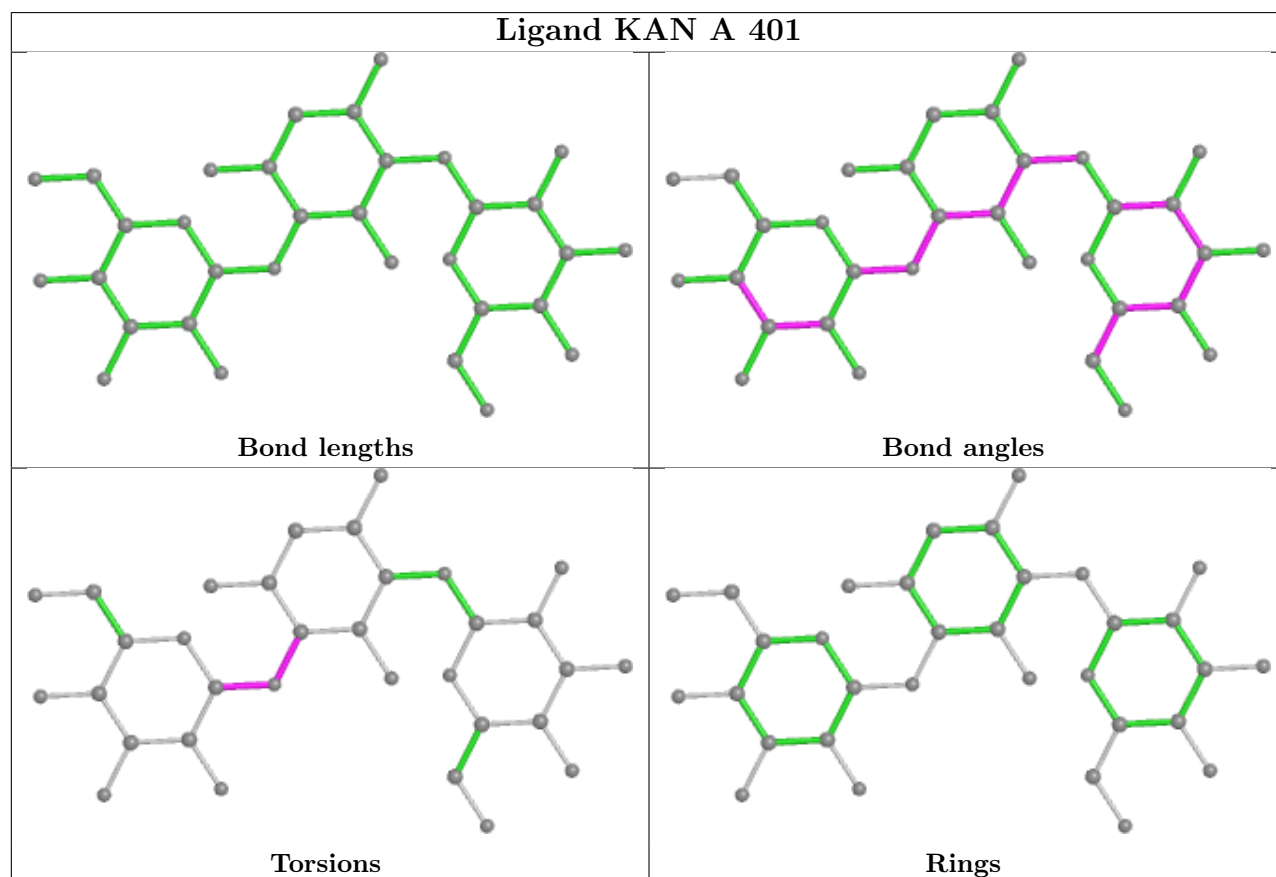
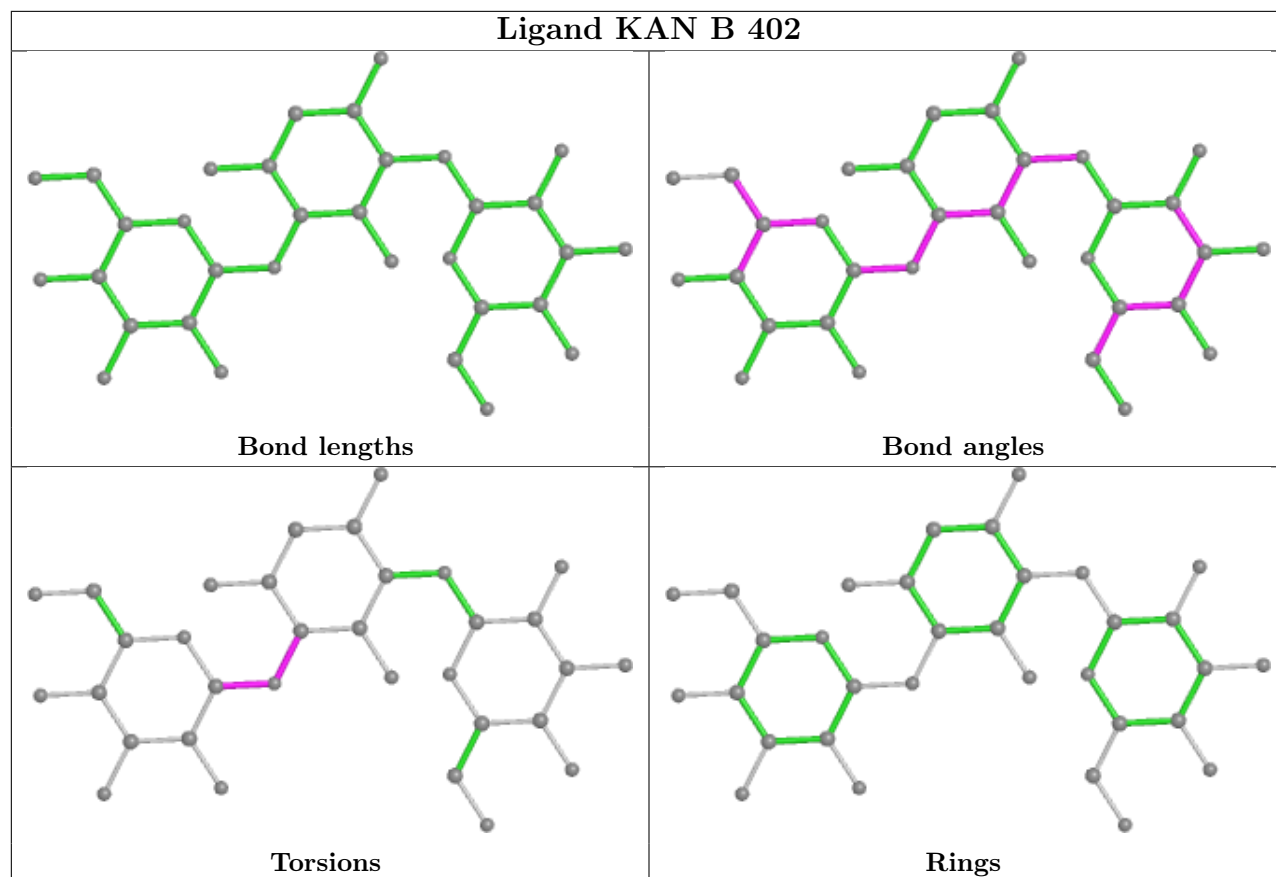
Mol	Chain	Res	Type	Clashes	Symm-Clashes
3	B	401[A]	QUE	2	0
3	B	401[B]	QUE	4	0
3	A	402	QUE	2	0
2	A	401	KAN	1	0
3	B	403	QUE	6	0

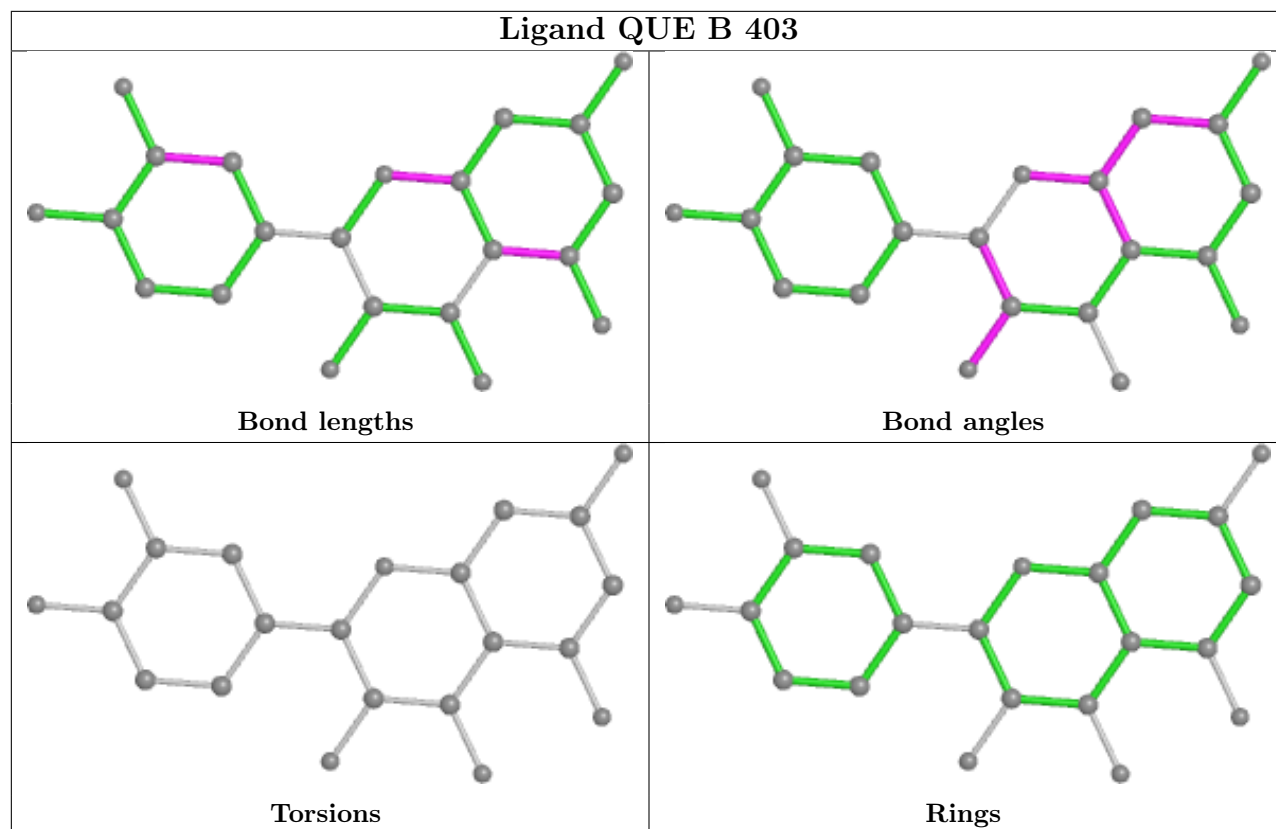
The following is a two-dimensional graphical depiction of Mogul quality analysis of bond lengths, bond angles, torsion angles, and ring geometry for all instances of the Ligand of Interest. In addition, ligands with molecular weight > 250 and outliers as shown on the validation Tables will also be included. For torsion angles, if less than 5% of the Mogul distribution of torsion angles is within 10 degrees of the torsion angle in question, then that torsion angle is considered an outlier. Any bond that is central to one or more torsion angles identified as an outlier by Mogul will be highlighted in the graph. For rings, the root-mean-square deviation (RMSD) between the ring

in question and similar rings identified by Mogul is calculated over all ring torsion angles. If the average RMSD is greater than 60 degrees and the minimal RMSD between the ring in question and any Mogul-identified rings is also greater than 60 degrees, then that ring is considered an outlier. The outliers are highlighted in purple. The color gray indicates Mogul did not find sufficient equivalents in the CSD to analyse the geometry.









5.7 Other polymers [i](#)

There are no such residues in this entry.

5.8 Polymer linkage issues [i](#)

There are no chain breaks in this entry.

6 Fit of model and data

6.1 Protein, DNA and RNA chains

In the following table, the column labelled ‘#RSRZ > 2’ contains the number (and percentage) of RSRZ outliers, followed by percent RSRZ outliers for the chain as percentile scores relative to all X-ray entries and entries of similar resolution. The OWAB column contains the minimum, median, 95th percentile and maximum values of the occupancy-weighted average B-factor per residue. The column labelled ‘Q < 0.9’ lists the number of (and percentage) of residues with an average occupancy less than 0.9.

Mol	Chain	Analysed	<RSRZ>	#RSRZ>2	OWAB(Å ²)	Q<0.9
1	A	289/322 (89%)	1.03	50 (17%) 1 1	51, 66, 87, 113	0
1	B	290/322 (90%)	1.07	52 (17%) 1 1	50, 65, 101, 118	0
All	All	579/644 (89%)	1.05	102 (17%) 1 1	50, 66, 94, 118	0

All (102) RSRZ outliers are listed below:

Mol	Chain	Res	Type	RSRZ
1	A	140	SER	11.9
1	B	298	ILE	5.6
1	B	230	PHE	5.6
1	A	190	TYR	5.4
1	A	138	PHE	5.2
1	B	140	SER	5.2
1	A	230	PHE	5.0
1	B	299	LYS	4.8
1	B	278	TYR	4.8
1	B	295	ILE	4.7
1	A	139	LYS	4.6
1	A	141	ASN	4.6
1	A	137	GLY	4.4
1	B	45	PHE	4.4
1	B	139	LYS	4.3
1	A	45	PHE	4.2
1	B	276	ILE	4.2
1	B	237	ASP	4.1
1	A	47	PHE	3.9
1	B	190	TYR	3.8
1	B	138	PHE	3.8
1	A	136	SER	3.7
1	A	231	ILE	3.7
1	A	253	LYS	3.7

Continued on next page...

Continued from previous page...

Mol	Chain	Res	Type	RSRZ
1	A	184	GLU	3.7
1	B	233	LEU	3.6
1	B	184	GLU	3.6
1	B	163	ARG	3.6
1	A	287	TRP	3.6
1	B	283	GLY	3.6
1	B	287	TRP	3.5
1	A	298	ILE	3.5
1	B	271	TRP	3.4
1	B	11	LYS	3.4
1	A	245	VAL	3.4
1	B	291	GLY	3.4
1	A	98	ILE	3.3
1	B	284	TYR	3.3
1	A	134	ASN	3.3
1	B	288	TYR	3.2
1	B	296	ARG	3.2
1	B	231	ILE	3.2
1	A	238	GLU	3.1
1	A	187	PHE	3.1
1	A	44	ILE	3.0
1	B	44	ILE	3.0
1	A	208	GLU	3.0
1	B	21	THR	2.9
1	A	130	LEU	2.9
1	B	46	LYS	2.9
1	B	297	SER	2.8
1	A	32	ASN	2.8
1	A	297	SER	2.8
1	B	282	TYR	2.8
1	B	293	ASN	2.8
1	A	93	ALA	2.7
1	B	123	LEU	2.7
1	B	135	ILE	2.7
1	B	3	THR	2.7
1	A	123	LEU	2.7
1	B	145	ASP	2.7
1	A	114	GLN	2.6
1	A	265	ARG	2.5
1	A	15	GLN	2.5
1	A	237	ASP	2.5
1	B	93	ALA	2.5

Continued on next page...

Continued from previous page...

Mol	Chain	Res	Type	RSRZ
1	A	240	TYR	2.5
1	A	278	TYR	2.5
1	B	95	PHE	2.4
1	A	3	THR	2.4
1	A	284	TYR	2.4
1	A	203	ILE	2.4
1	B	157	ILE	2.4
1	B	32	ASN	2.4
1	B	57	LEU	2.4
1	A	113	LYS	2.4
1	B	248	ILE	2.3
1	A	115	SER	2.3
1	A	69	ASN	2.3
1	A	157	ILE	2.3
1	A	198	PHE	2.2
1	B	273	PHE	2.2
1	A	212	ILE	2.2
1	A	46	LYS	2.2
1	A	243	GLU	2.1
1	A	146	PHE	2.1
1	B	20	PHE	2.1
1	A	150	ILE	2.1
1	B	31	GLY	2.1
1	B	212	ILE	2.1
1	B	142	LEU	2.1
1	B	198	PHE	2.1
1	A	127	LEU	2.1
1	A	9	VAL	2.1
1	B	255	LYS	2.1
1	B	286	ASP	2.1
1	B	182	GLU	2.1
1	A	92	PHE	2.1
1	B	27	ILE	2.0
1	B	141	ASN	2.0
1	B	47	PHE	2.0
1	A	194	ILE	2.0

6.2 Non-standard residues in protein, DNA, RNA chains [i](#)

There are no non-standard protein/DNA/RNA residues in this entry.

6.3 Carbohydrates [i](#)

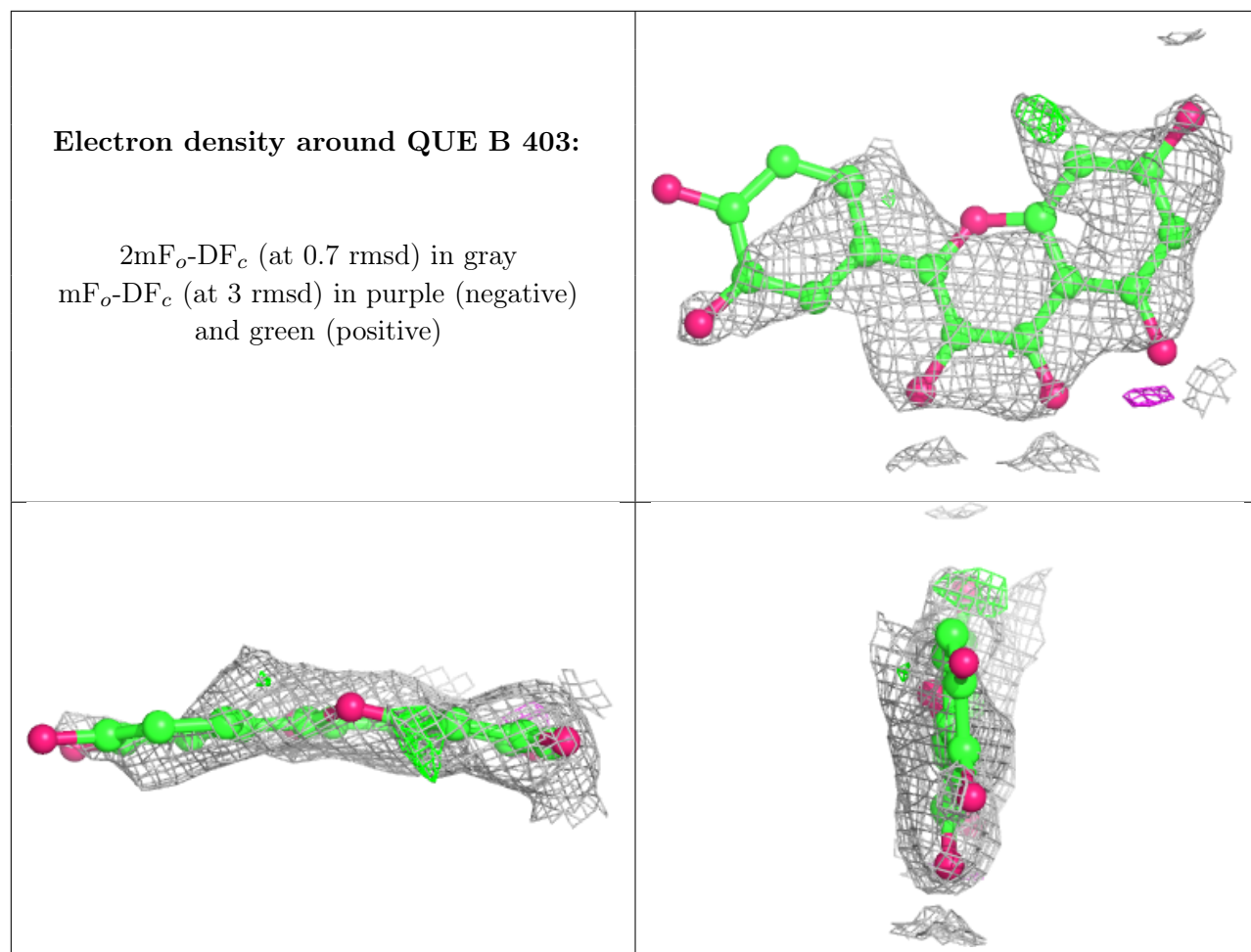
There are no monosaccharides in this entry.

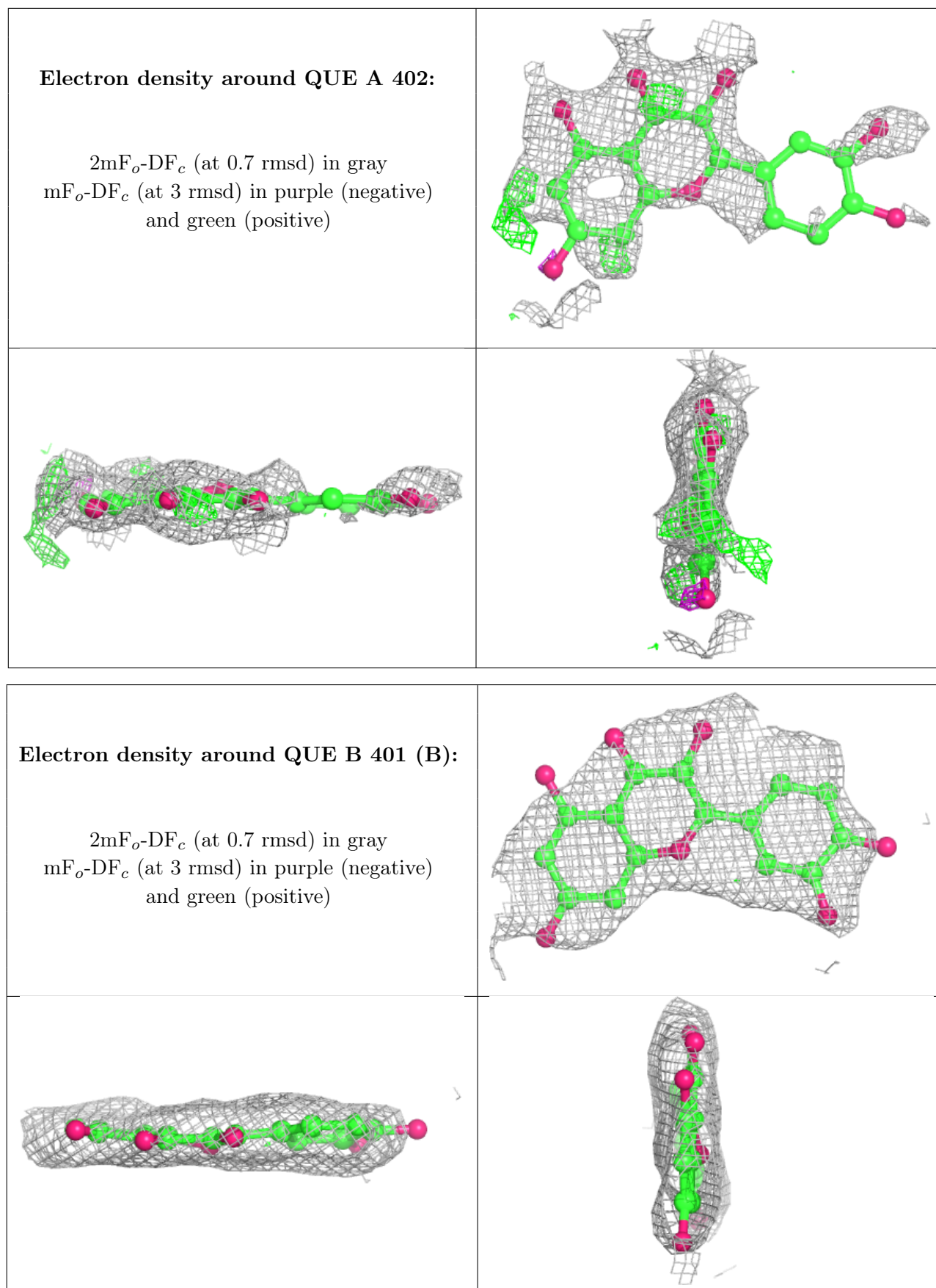
6.4 Ligands [i](#)

In the following table, the Atoms column lists the number of modelled atoms in the group and the number defined in the chemical component dictionary. The B-factors column lists the minimum, median, 95th percentile and maximum values of B factors of atoms in the group. The column labelled 'Q< 0.9' lists the number of atoms with occupancy less than 0.9.

Mol	Type	Chain	Res	Atoms	RSCC	RSR	B-factors(Å ²)	Q<0.9
3	QUE	B	403	22/22	0.31	0.57	81,82,83,83	22
3	QUE	A	402	22/22	0.46	0.42	71,72,72,73	22
3	QUE	B	401[B]	22/22	0.81	0.23	70,71,71,71	22
3	QUE	B	401[A]	22/22	0.81	0.23	70,71,71,71	22
2	KAN	B	402	33/33	0.83	0.22	67,68,71,71	0
2	KAN	A	401	33/33	0.88	0.17	69,71,75,75	0
4	CL	B	404	1/1	0.91	0.17	86,86,86,86	0
4	CL	A	403	1/1	0.96	0.12	64,64,64,64	0

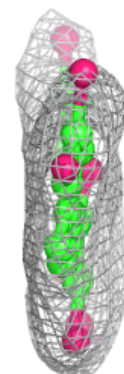
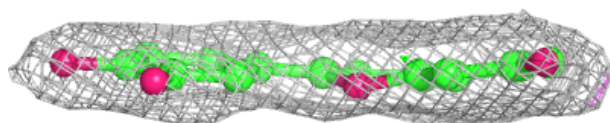
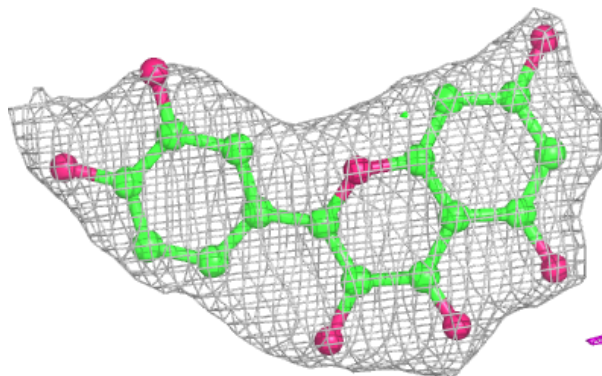
The following is a graphical depiction of the model fit to experimental electron density of all instances of the Ligand of Interest. In addition, ligands with molecular weight > 250 and outliers as shown on the geometry validation Tables will also be included. Each fit is shown from different orientation to approximate a three-dimensional view.



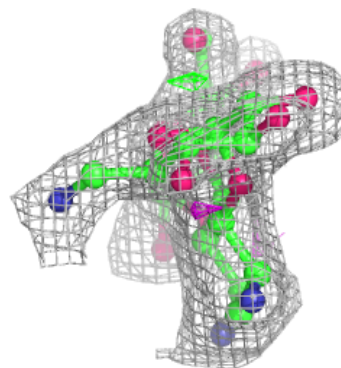
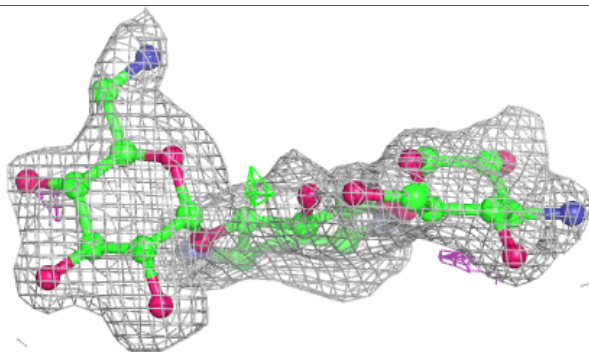
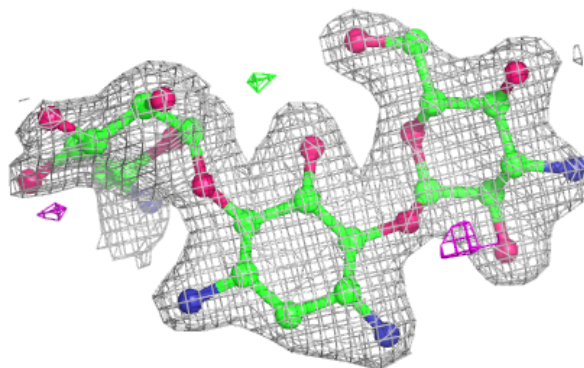


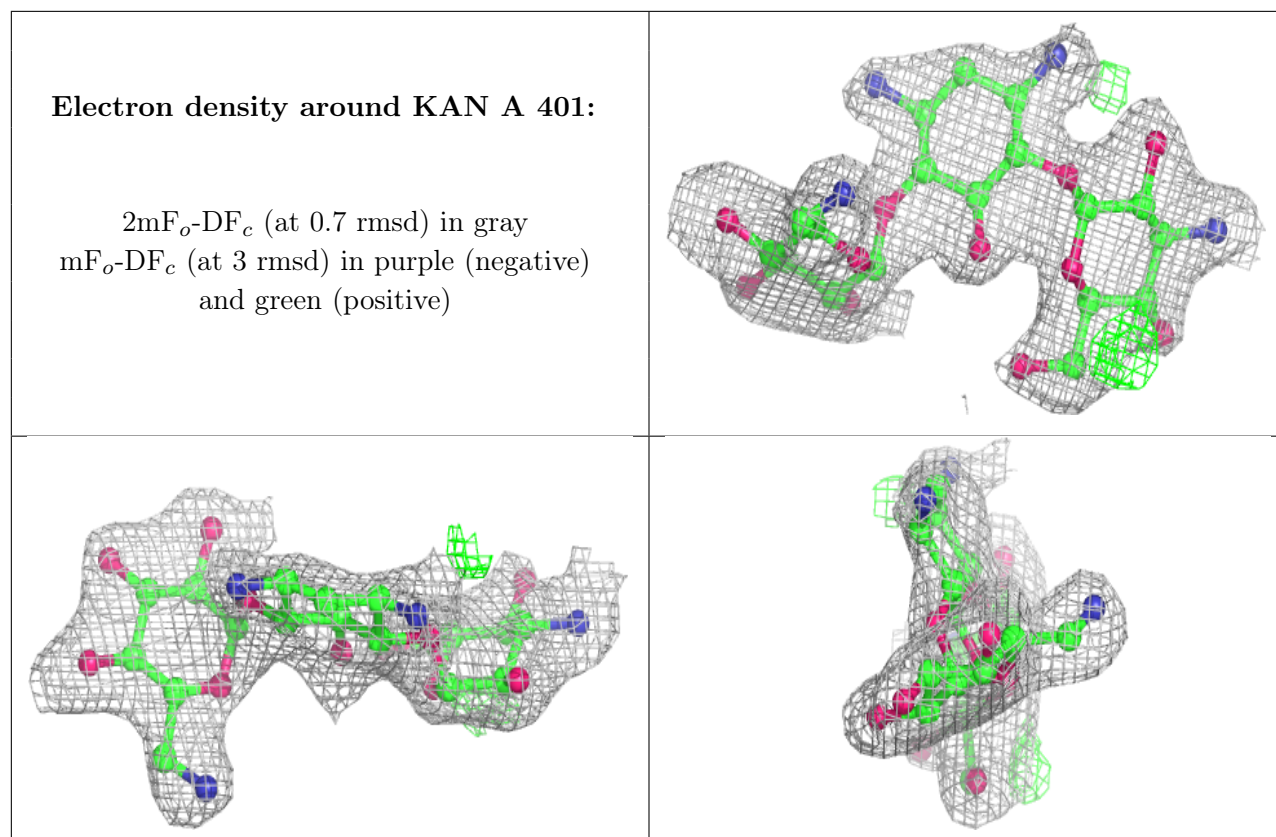
Electron density around QUE B 401 (A):

$2mF_o-DF_c$ (at 0.7 rmsd) in gray
 mF_o-DF_c (at 3 rmsd) in purple (negative)
and green (positive)

**Electron density around KAN B 402:**

$2mF_o-DF_c$ (at 0.7 rmsd) in gray
 mF_o-DF_c (at 3 rmsd) in purple (negative)
and green (positive)





6.5 Other polymers [i](#)

There are no such residues in this entry.