



# Full wwPDB X-ray Structure Validation Report ⓘ

Aug 9, 2020 – 08:28 PM BST

PDB ID : 5D3I  
Title : Crystal structure of the SSL3-TLR2 complex  
Authors : Feitsma, L.J.; Huizinga, E.G.  
Deposited on : 2015-08-06  
Resolution : 3.20 Å(reported)

This is a Full wwPDB X-ray Structure Validation Report for a publicly released PDB entry.

We welcome your comments at [validation@mail.wwpdb.org](mailto:validation@mail.wwpdb.org)

A user guide is available at

<https://www.wwpdb.org/validation/2017/XrayValidationReportHelp>

with specific help available everywhere you see the ⓘ symbol.

---

The following versions of software and data (see [references ⓘ](#)) were used in the production of this report:

MolProbity : 4.02b-467  
Mogul : 1.8.5 (274361), CSD as541be (2020)  
Xtriage (Phenix) : 1.13  
EDS : 2.13.1  
buster-report : 1.1.7 (2018)  
Percentile statistics : 20191225.v01 (using entries in the PDB archive December 25th 2019)  
Refmac : 5.8.0158  
CCP4 : 7.0.044 (Gargrove)  
Ideal geometry (proteins) : Engh & Huber (2001)  
Ideal geometry (DNA, RNA) : Parkinson et al. (1996)  
Validation Pipeline (wwPDB-VP) : 2.13.1

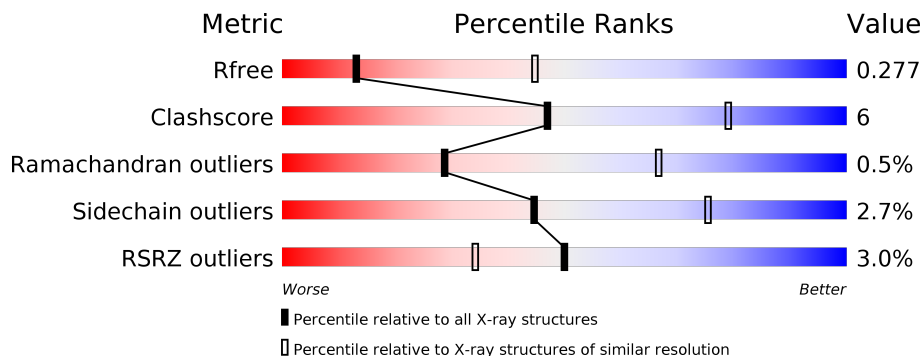
# 1 Overall quality at a glance

The following experimental techniques were used to determine the structure:

*X-RAY DIFFRACTION*

The reported resolution of this entry is 3.20 Å.

Percentile scores (ranging between 0-100) for global validation metrics of the entry are shown in the following graphic. The table shows the number of entries on which the scores are based.



Metric	Whole archive (#Entries)	Similar resolution (#Entries, resolution range(Å))
$R_{free}$	130704	1133 (3.20-3.20)
Clashscore	141614	1253 (3.20-3.20)
Ramachandran outliers	138981	1234 (3.20-3.20)
Sidechain outliers	138945	1233 (3.20-3.20)
RSRZ outliers	127900	1095 (3.20-3.20)

The table below summarises the geometric issues observed across the polymeric chains and their fit to the electron density. The red, orange, yellow and green segments on the lower bar indicate the fraction of residues that contain outliers for  $\geq 3$ , 2, 1 and 0 types of geometric quality criteria respectively. A grey segment represents the fraction of residues that are not modelled. The numeric value for each fraction is indicated below the corresponding segment, with a dot representing fractions  $\leq 5\%$ . The upper red bar (where present) indicates the fraction of residues that have poor fit to the electron density. The numeric value is given above the bar.

Mol	Chain	Length	Quality of chain
1	A	568	
2	B	195	
3	C	2	

## 2 Entry composition i

There are 6 unique types of molecules in this entry. The entry contains 5976 atoms, of which 0 are hydrogens and 0 are deuteriums.

In the tables below, the ZeroOcc column contains the number of atoms modelled with zero occupancy, the AltConf column contains the number of residues with at least one atom in alternate conformation and the Trace column contains the number of residues modelled with at most 2 atoms.

- Molecule 1 is a protein called Toll-like receptor 2.

Mol	Chain	Residues	Atoms					ZeroOcc	AltConf	Trace
			Total	C	N	O	S			
1	A	549	4312	2747	716	829	20	0	0	0

There are 3 discrepancies between the modelled and reference sequences:

Chain	Residue	Modelled	Actual	Comment	Reference
A	23	GLY	-	expression tag	UNP Q9QUN7
A	24	SER	-	expression tag	UNP Q9QUN7
A	590	ALA	-	expression tag	UNP Q9QUN7

- Molecule 2 is a protein called Staphylococcal Superantigen-Like protein 3.

Mol	Chain	Residues	Atoms					ZeroOcc	AltConf	Trace
			Total	C	N	O	S			
2	B	190	1578	1015	264	292	7	0	1	0

There are 2 discrepancies between the modelled and reference sequences:

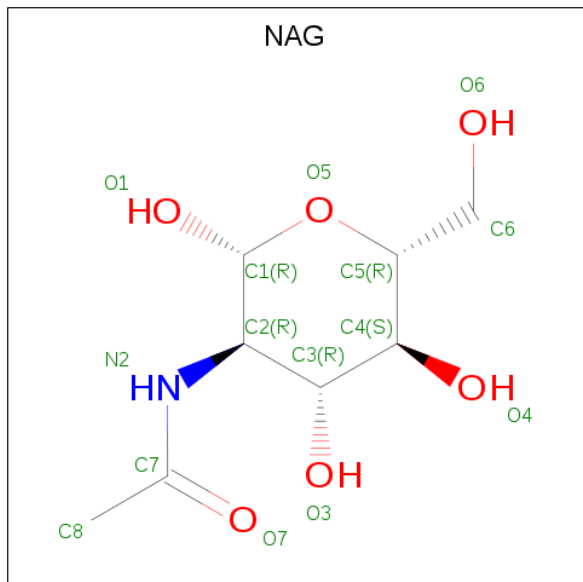
Chain	Residue	Modelled	Actual	Comment	Reference
B	132	GLY	-	expression tag	UNP Q2G0X7
B	133	SER	-	expression tag	UNP Q2G0X7

- Molecule 3 is an oligosaccharide called 2-acetamido-2-deoxy-beta-D-glucopyranose-(1-4)-2-acetamido-2-deoxy-beta-D-glucopyranose.



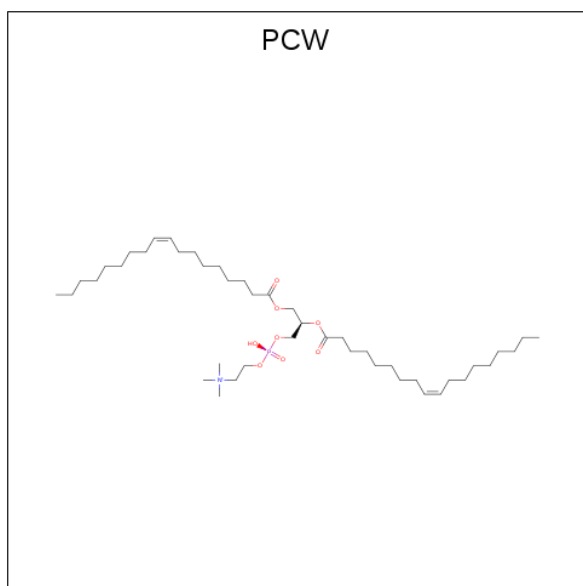
Mol	Chain	Residues	Atoms				ZeroOcc	AltConf	Trace
			Total	C	N	O			
3	C	2	28	16	2	10	0	0	0

- Molecule 4 is 2-acetamido-2-deoxy-beta-D-glucopyranose (three-letter code: NAG) (formula:  $C_8H_{15}NO_6$ ).



Mol	Chain	Residues	Atoms				ZeroOcc	AltConf
			Total	C	N	O		
4	A	1	14	8	1	5	0	0

- Molecule 5 is 1,2-DIOLEOYL-SN-GLYCERO-3-PHOSPHOCHOLINE (three-letter code: PCW) (formula:  $C_{44}H_{85}NO_8P$ ).



Mol	Chain	Residues	Atoms					ZeroOcc	AltConf
			Total	C	N	O	P		
5	A	1	43	33	1	8	1	0	0

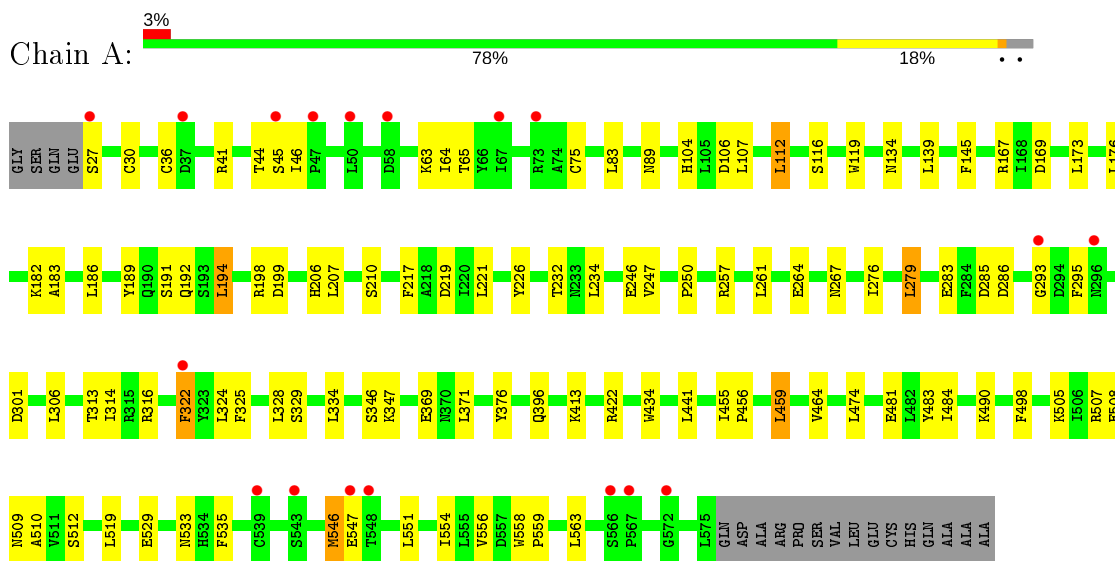
- Molecule 6 is CHLORIDE ION (three-letter code: CL) (formula: Cl).

<b>Mol</b>	<b>Chain</b>	<b>Residues</b>	<b>Atoms</b>		<b>ZeroOcc</b>	<b>AltConf</b>
6	A	1	Total	Cl	0	0
			1	1		

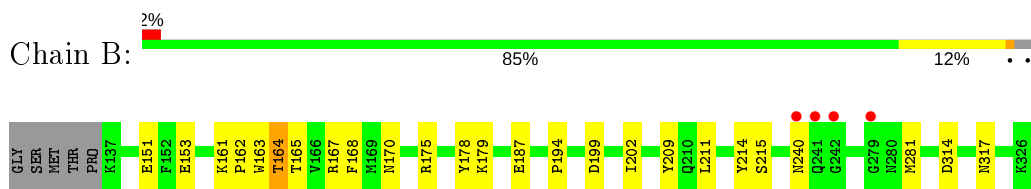
### 3 Residue-property plots

These plots are drawn for all protein, RNA, DNA and oligosaccharide chains in the entry. The first graphic for a chain summarises the proportions of the various outlier classes displayed in the second graphic. The second graphic shows the sequence view annotated by issues in geometry and electron density. Residues are color-coded according to the number of geometric quality criteria for which they contain at least one outlier: green = 0, yellow = 1, orange = 2 and red = 3 or more. A red dot above a residue indicates a poor fit to the electron density ( $RSRZ > 2$ ). Stretches of 2 or more consecutive residues without any outlier are shown as a green connector. Residues present in the sample, but not in the model, are shown in grey.

- Molecule 1: Toll-like receptor 2



- Molecule 2: Staphylococcal Superantigen-Like protein 3



- Molecule 3: 2-acetamido-2-deoxy-beta-D-glucopyranose-(1-4)-2-acetamido-2-deoxy-beta-D-glucopyranose



## 4 Data and refinement statistics

Property	Value	Source
Space group	P 61	Depositor
Cell constants a, b, c, $\alpha$ , $\beta$ , $\gamma$	104.20Å 104.20Å 153.62Å 90.00° 90.00° 120.00°	Depositor
Resolution (Å)	52.10 – 3.20 52.10 – 3.20	Depositor EDS
% Data completeness (in resolution range)	93.4 (52.10-3.20) 86.3 (52.10-3.20)	Depositor EDS
$R_{merge}$	0.23	Depositor
$R_{sym}$	(Not available)	Depositor
$\langle I/\sigma(I) \rangle$ <sup>1</sup>	1.17 (at 3.19Å)	Xtrriage
Refinement program	PHENIX 1.9_1692	Depositor
R, $R_{free}$	0.231 , 0.271 0.239 , 0.277	Depositor DCC
$R_{free}$ test set	703 reflections (4.80%)	wwPDB-VP
Wilson B-factor (Å <sup>2</sup> )	56.6	Xtrriage
Anisotropy	0.144	Xtrriage
Bulk solvent $k_{sol}$ (e/Å <sup>3</sup> ), $B_{sol}$ (Å <sup>2</sup> )	0.32 , 37.3	EDS
L-test for twinning <sup>2</sup>	$\langle  L  \rangle = 0.50$ , $\langle L^2 \rangle = 0.33$	Xtrriage
Estimated twinning fraction	0.053 for h,-h-k,-l	Xtrriage
$F_o, F_c$ correlation	0.88	EDS
Total number of atoms	5976	wwPDB-VP
Average B, all atoms (Å <sup>2</sup> )	70.0	wwPDB-VP

Xtrriage's analysis on translational NCS is as follows: *The largest off-origin peak in the Patterson function is 3.54% of the height of the origin peak. No significant pseudotranslation is detected.*

<sup>1</sup> Intensities estimated from amplitudes.

<sup>2</sup> Theoretical values of  $\langle |L| \rangle$ ,  $\langle L^2 \rangle$  for acentric reflections are 0.5, 0.333 respectively for untwinned datasets, and 0.375, 0.2 for perfectly twinned datasets.

## 5 Model quality [i](#)

### 5.1 Standard geometry [i](#)

Bond lengths and bond angles in the following residue types are not validated in this section: CL, PCW, NAG

The Z score for a bond length (or angle) is the number of standard deviations the observed value is removed from the expected value. A bond length (or angle) with  $|Z| > 5$  is considered an outlier worth inspection. RMSZ is the root-mean-square of all Z scores of the bond lengths (or angles).

Mol	Chain	Bond lengths		Bond angles	
		RMSZ	# Z  >5	RMSZ	# Z  >5
1	A	0.34	0/4393	0.59	0/5956
2	B	0.36	0/1610	0.53	0/2152
All	All	0.35	0/6003	0.57	0/8108

There are no bond length outliers.

There are no bond angle outliers.

There are no chirality outliers.

There are no planarity outliers.

### 5.2 Too-close contacts [i](#)

In the following table, the Non-H and H(model) columns list the number of non-hydrogen atoms and hydrogen atoms in the chain respectively. The H(added) column lists the number of hydrogen atoms added and optimized by MolProbity. The Clashes column lists the number of clashes within the asymmetric unit, whereas Symm-Clashes lists symmetry related clashes.

Mol	Chain	Non-H	H(model)	H(added)	Clashes	Symm-Clashes
1	A	4312	0	4307	62	0
2	B	1578	0	1616	16	0
3	C	28	0	25	0	0
4	A	14	0	13	1	0
5	A	43	0	56	3	0
6	A	1	0	0	1	0
All	All	5976	0	6017	74	0

The all-atom clashscore is defined as the number of clashes found per 1000 atoms (including hydrogen atoms). The all-atom clashscore for this structure is 6.

All (74) close contacts within the same asymmetric unit are listed below, sorted by their clash



magnitude.

Atom-1	Atom-2	Interatomic distance (Å)	Clash overlap (Å)
1:A:257:ARG:NH1	1:A:285:ASP:OD2	2.15	0.80
1:A:324:LEU:HD13	2:B:211:LEU:HD23	1.71	0.70
1:A:283:GLU:HG2	1:A:313:THR:HB	1.73	0.69
1:A:329:SER:HB3	2:B:175:ARG:HD2	1.74	0.69
1:A:376:TYR:CZ	2:B:194:PRO:HG3	2.33	0.63
1:A:65:THR:HG23	1:A:89:ASN:HD21	1.64	0.60
1:A:396:GLN:OE1	1:A:422:ARG:NH1	2.35	0.60
1:A:182:LYS:HA	1:A:206:HIS:HB2	1.84	0.59
2:B:240:ASN:OD1	2:B:240:ASN:N	2.35	0.59
1:A:46:ILE:HD13	1:A:64:ILE:HD13	1.85	0.59
1:A:139:LEU:HD12	1:A:169:ASP:HB3	1.88	0.55
2:B:202:ILE:HG23	2:B:215:SER:HB2	1.90	0.53
1:A:65:THR:HG23	1:A:89:ASN:ND2	2.26	0.49
1:A:167:ARG:NH1	1:A:191:SER:O	2.44	0.49
1:A:314:ILE:HD11	5:A:804:PCW:H19	1.94	0.49
1:A:456:PRO:HG2	1:A:459:LEU:HD13	1.95	0.49
1:A:276:ILE:HD12	1:A:279:LEU:HG	1.95	0.49
1:A:505:LYS:HA	1:A:529:GLU:HB2	1.95	0.49
1:A:507:ARG:O	1:A:509:ASN:N	2.46	0.49
1:A:112:LEU:O	1:A:134:ASN:HB3	2.13	0.48
1:A:306:LEU:HD13	1:A:334:LEU:HD22	1.95	0.48
1:A:347:LYS:HA	1:A:371:LEU:HD13	1.94	0.48
1:A:286:ASP:OD1	1:A:316:ARG:NE	2.33	0.48
1:A:217:PHE:CE2	1:A:221:LEU:HD21	2.48	0.47
1:A:45:SER:HA	1:A:64:ILE:HG23	1.96	0.47
5:A:804:PCW:H71	6:A:805:CL:CL	2.51	0.47
1:A:329:SER:CB	2:B:175:ARG:HD2	2.42	0.47
1:A:173:LEU:HD13	1:A:176:LEU:HD11	1.96	0.47
2:B:167:ARG:NH2	2:B:187:GLU:OE1	2.48	0.47
1:A:116:SER:HB3	1:A:119:TRP:CE2	2.50	0.47
1:A:455:ILE:HB	1:A:474:LEU:HD21	1.96	0.47
1:A:481:GLU:OE1	1:A:483:TYR:OH	2.25	0.47
1:A:546:MET:HG3	1:A:547:GLU:N	2.30	0.46
1:A:396:GLN:HA	1:A:422:ARG:O	2.15	0.46
1:A:264:GLU:HG3	1:A:295:PHE:CE1	2.51	0.46
1:A:267:ASN:ND2	1:A:301:ASP:O	2.29	0.46
1:A:325:PHE:CE2	1:A:328:LEU:HD23	2.50	0.46
1:A:198:ARG:HG2	1:A:199:ASP:OD1	2.16	0.45
2:B:170:ASN:OD1	2:B:179:LYS:HG2	2.17	0.45
1:A:551:LEU:O	1:A:554:ILE:HG22	2.16	0.45
1:A:509:ASN:HB3	1:A:510:ALA:H	1.50	0.45

*Continued on next page...*

*Continued from previous page...*

Atom-1	Atom-2	Interatomic distance (Å)	Clash overlap (Å)
2:B:164:THR:HG22	2:B:165:THR:H	1.82	0.45
2:B:314:ASP:OD2	2:B:317:ASN:ND2	2.49	0.45
1:A:30:CYS:HA	1:A:36:CYS:HA	1.99	0.45
1:A:210:SER:HB3	1:A:234:LEU:HD23	1.99	0.44
1:A:104:HIS:HE1	1:A:106:ASP:HB2	1.82	0.44
1:A:27:SER:O	1:A:41:ARG:NE	2.47	0.44
1:A:376:TYR:CE1	2:B:194:PRO:HG3	2.53	0.43
2:B:153:GLU:HA	2:B:199:ASP:OD1	2.18	0.43
1:A:293:GLY:H	1:A:324:LEU:HB2	1.81	0.43
2:B:170:ASN:HA	2:B:178:TYR:O	2.19	0.43
1:A:191:SER:O	1:A:192:GLN:HB2	2.19	0.43
1:A:413:LYS:CB	4:A:801:NAG:H83	2.48	0.43
1:A:346:SER:O	5:A:804:PCW:O11	2.36	0.42
2:B:168:PHE:HE2	2:B:214:TYR:HD2	1.67	0.42
1:A:44:THR:HA	1:A:63:LYS:O	2.20	0.42
1:A:512:SER:HA	1:A:535:PHE:HA	2.00	0.42
1:A:83:LEU:HB2	1:A:107:LEU:HD23	2.02	0.42
1:A:194:LEU:HA	1:A:194:LEU:HD12	1.86	0.42
1:A:207:LEU:O	1:A:232:THR:HA	2.20	0.42
1:A:441:LEU:HB3	1:A:459:LEU:HD21	2.00	0.42
1:A:322:PHE:HE1	1:A:325:PHE:HD2	1.67	0.42
1:A:490:LYS:HA	1:A:510:ALA:O	2.20	0.42
1:A:183:ALA:HB1	1:A:186:LEU:HB2	2.01	0.41
1:A:221:LEU:O	1:A:250:PRO:HD2	2.21	0.41
1:A:189:TYR:OH	1:A:219:ASP:OD2	2.27	0.41
1:A:306:LEU:HA	1:A:306:LEU:HD12	1.90	0.41
1:A:104:HIS:CE1	1:A:106:ASP:HB2	2.56	0.41
1:A:369:GLU:HA	1:A:396:GLN:O	2.21	0.41
1:A:558:TRP:HA	1:A:559:PRO:HA	1.75	0.41
2:B:161:LYS:O	2:B:163:TRP:HE3	2.04	0.40
2:B:164:THR:HG21	2:B:209:TYR:CD1	2.56	0.40
1:A:464:VAL:HG23	1:A:484:ILE:HG13	2.03	0.40
1:A:434:TRP:CD1	1:A:456:PRO:HD3	2.57	0.40

There are no symmetry-related clashes.

## 5.3 Torsion angles [i](#)

### 5.3.1 Protein backbone [i](#)

In the following table, the Percentiles column shows the percent Ramachandran outliers of the chain as a percentile score with respect to all X-ray entries followed by that with respect to entries of similar resolution.

The Analysed column shows the number of residues for which the backbone conformation was analysed, and the total number of residues.

Mol	Chain	Analysed	Favoured	Allowed	Outliers	Percentiles	
1	A	547/568 (96%)	501 (92%)	43 (8%)	3 (0%)	29	67
2	B	189/195 (97%)	182 (96%)	6 (3%)	1 (0%)	29	67
All	All	736/763 (96%)	683 (93%)	49 (7%)	4 (0%)	29	67

All (4) Ramachandran outliers are listed below:

Mol	Chain	Res	Type
1	A	508	GLU
1	A	246	GLU
2	B	162	PRO
1	A	145	PHE

### 5.3.2 Protein sidechains [i](#)

In the following table, the Percentiles column shows the percent sidechain outliers of the chain as a percentile score with respect to all X-ray entries followed by that with respect to entries of similar resolution.

The Analysed column shows the number of residues for which the sidechain conformation was analysed, and the total number of residues.

Mol	Chain	Analysed	Rotameric	Outliers	Percentiles	
1	A	499/522 (96%)	484 (97%)	15 (3%)	41	73
2	B	176/179 (98%)	173 (98%)	3 (2%)	60	83
All	All	675/701 (96%)	657 (97%)	18 (3%)	44	75

All (18) residues with a non-rotameric sidechain are listed below:

Mol	Chain	Res	Type
1	A	75	CYS
1	A	112	LEU

*Continued on next page...*

*Continued from previous page...*

Mol	Chain	Res	Type
1	A	194	LEU
1	A	226	TYR
1	A	247	VAL
1	A	261	LEU
1	A	279	LEU
1	A	322	PHE
1	A	459	LEU
1	A	498	PHE
1	A	519	LEU
1	A	533	ASN
1	A	546	MET
1	A	556	VAL
1	A	563	LEU
2	B	151	GLU
2	B	164	THR
2	B	281	MET

Some sidechains can be flipped to improve hydrogen bonding and reduce clashes. All (1) such sidechains are listed below:

Mol	Chain	Res	Type
2	B	317	ASN

### 5.3.3 RNA [i](#)

There are no RNA molecules in this entry.

## 5.4 Non-standard residues in protein, DNA, RNA chains [i](#)

There are no non-standard protein/DNA/RNA residues in this entry.

## 5.5 Carbohydrates [i](#)

2 monosaccharides are modelled in this entry.

In the following table, the Counts columns list the number of bonds (or angles) for which Mogul statistics could be retrieved, the number of bonds (or angles) that are observed in the model and the number of bonds (or angles) that are defined in the Chemical Component Dictionary. The Link column lists molecule types, if any, to which the group is linked. The Z score for a bond length (or angle) is the number of standard deviations the observed value is removed from the

expected value. A bond length (or angle) with  $|Z| > 2$  is considered an outlier worth inspection. RMSZ is the root-mean-square of all Z scores of the bond lengths (or angles).

Mol	Type	Chain	Res	Link	Bond lengths			Bond angles		
					Counts	RMSZ	# Z  > 2	Counts	RMSZ	# Z  > 2
3	NAG	C	1	1,3	14,14,15	0.65	1 (7%)	17,19,21	0.56	0
3	NAG	C	2	3	14,14,15	0.29	0	17,19,21	0.54	0

In the following table, the Chirals column lists the number of chiral outliers, the number of chiral centers analysed, the number of these observed in the model and the number defined in the Chemical Component Dictionary. Similar counts are reported in the Torsion and Rings columns. '-' means no outliers of that kind were identified.

Mol	Type	Chain	Res	Link	Chirals	Torsions	Rings
3	NAG	C	1	1,3	-	2/6/23/26	0/1/1/1
3	NAG	C	2	3	-	3/6/23/26	0/1/1/1

All (1) bond length outliers are listed below:

Mol	Chain	Res	Type	Atoms	Z	Observed(Å)	Ideal(Å)
3	C	1	NAG	O5-C1	-2.29	1.40	1.43

There are no bond angle outliers.

There are no chirality outliers.

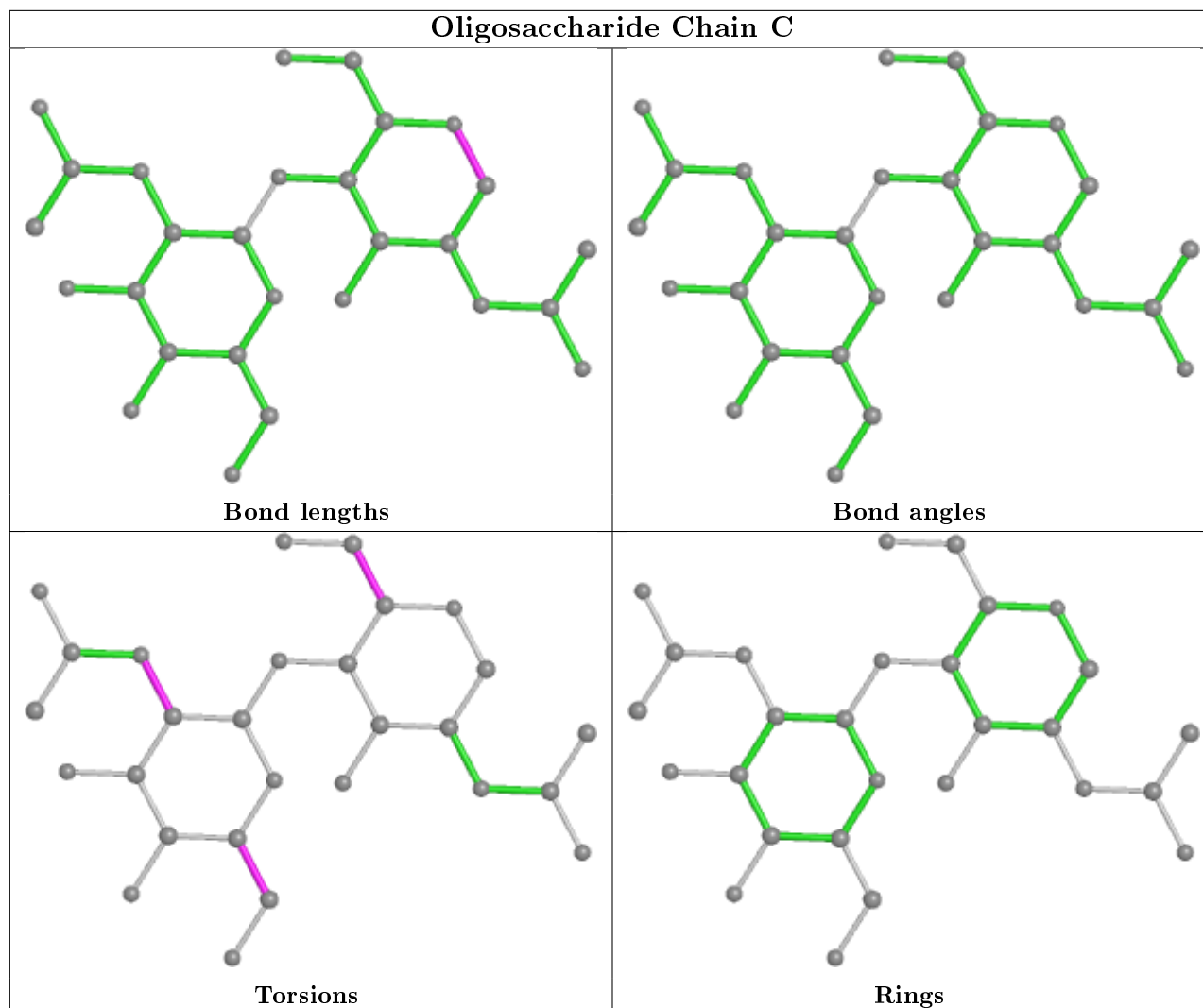
All (5) torsion outliers are listed below:

Mol	Chain	Res	Type	Atoms
3	C	1	NAG	O5-C5-C6-O6
3	C	2	NAG	O5-C5-C6-O6
3	C	1	NAG	C4-C5-C6-O6
3	C	2	NAG	C4-C5-C6-O6
3	C	2	NAG	C3-C2-N2-C7

There are no ring outliers.

No monomer is involved in short contacts.

The following is a two-dimensional graphical depiction of Mogul quality analysis of bond lengths, bond angles, torsion angles, and ring geometry for oligosaccharide.



## 5.6 Ligand geometry [i](#)

Of 3 ligands modelled in this entry, 1 is monoatomic - leaving 2 for Mogul analysis.

In the following table, the Counts columns list the number of bonds (or angles) for which Mogul statistics could be retrieved, the number of bonds (or angles) that are observed in the model and the number of bonds (or angles) that are defined in the Chemical Component Dictionary. The Link column lists molecule types, if any, to which the group is linked. The Z score for a bond length (or angle) is the number of standard deviations the observed value is removed from the expected value. A bond length (or angle) with  $|Z| > 2$  is considered an outlier worth inspection. RMSZ is the root-mean-square of all Z scores of the bond lengths (or angles).

Mol	Type	Chain	Res	Link	Bond lengths			Bond angles		
					Counts	RMSZ	# $ Z  > 2$	Counts	RMSZ	# $ Z  > 2$
5	PCW	A	804	-	42,42,53	1.66	5 (11%)	47,50,61	1.52	5 (10%)
4	NAG	A	801	1	14,14,15	0.69	1 (7%)	17,19,21	0.71	1 (5%)

In the following table, the Chirals column lists the number of chiral outliers, the number of chiral centers analysed, the number of these observed in the model and the number defined in the Chemical Component Dictionary. Similar counts are reported in the Torsion and Rings columns. '-' means no outliers of that kind were identified.

Mol	Type	Chain	Res	Link	Chirals	Torsions	Rings
5	PCW	A	804	-	-	24/46/46/57	-
4	NAG	A	801	1	-	2/6/23/26	0/1/1/1

All (6) bond length outliers are listed below:

Mol	Chain	Res	Type	Atoms	Z	Observed(Å)	Ideal(Å)
5	A	804	PCW	O31-C31	6.02	1.40	1.22
5	A	804	PCW	O11-C11	5.90	1.40	1.22
5	A	804	PCW	O3-C11	3.11	1.42	1.33
5	A	804	PCW	O2-C31	2.70	1.41	1.34
4	A	801	NAG	C1-C2	2.28	1.55	1.52
5	A	804	PCW	O2-C2	-2.14	1.41	1.46

All (6) bond angle outliers are listed below:

Mol	Chain	Res	Type	Atoms	Z	Observed(°)	Ideal(°)
5	A	804	PCW	O3-C11-O11	-5.67	109.29	123.59
5	A	804	PCW	O2-C31-O31	-5.53	110.33	123.70
5	A	804	PCW	O11-C11-C12	-3.89	108.57	123.73
5	A	804	PCW	O31-C31-C32	-3.34	110.72	123.73
5	A	804	PCW	C8-N-C5	2.34	119.49	109.92
4	A	801	NAG	C1-O5-C5	2.03	114.94	112.19

There are no chirality outliers.

All (26) torsion outliers are listed below:

Mol	Chain	Res	Type	Atoms
5	A	804	PCW	O11-C11-O3-C3
5	A	804	PCW	O31-C31-O2-C2
5	A	804	PCW	C1-O3P-P-O2P
5	A	804	PCW	C12-C11-O3-C3
4	A	801	NAG	O5-C5-C6-O6
5	A	804	PCW	C31-C32-C33-C34
5	A	804	PCW	C4-C5-N-C8
5	A	804	PCW	C1-O3P-P-O4P
5	A	804	PCW	C4-O4P-P-O3P
5	A	804	PCW	C32-C31-O2-C2

*Continued on next page...*

*Continued from previous page...*

Mol	Chain	Res	Type	Atoms
5	A	804	PCW	C14-C15-C16-C17
5	A	804	PCW	C32-C33-C34-C35
5	A	804	PCW	C35-C36-C37-C38
5	A	804	PCW	C36-C37-C38-C39
5	A	804	PCW	C4-C5-N-C6
5	A	804	PCW	C34-C35-C36-C37
5	A	804	PCW	C4-C5-N-C7
5	A	804	PCW	O3P-C1-C2-C3
5	A	804	PCW	O3P-C1-C2-O2
5	A	804	PCW	C39-C40-C41-C42
5	A	804	PCW	C4-O4P-P-O1P
4	A	801	NAG	C3-C2-N2-C7
5	A	804	PCW	C2-C1-O3P-P
5	A	804	PCW	C17-C18-C19-C20
5	A	804	PCW	C37-C38-C39-C40
5	A	804	PCW	O31-C31-C32-C33

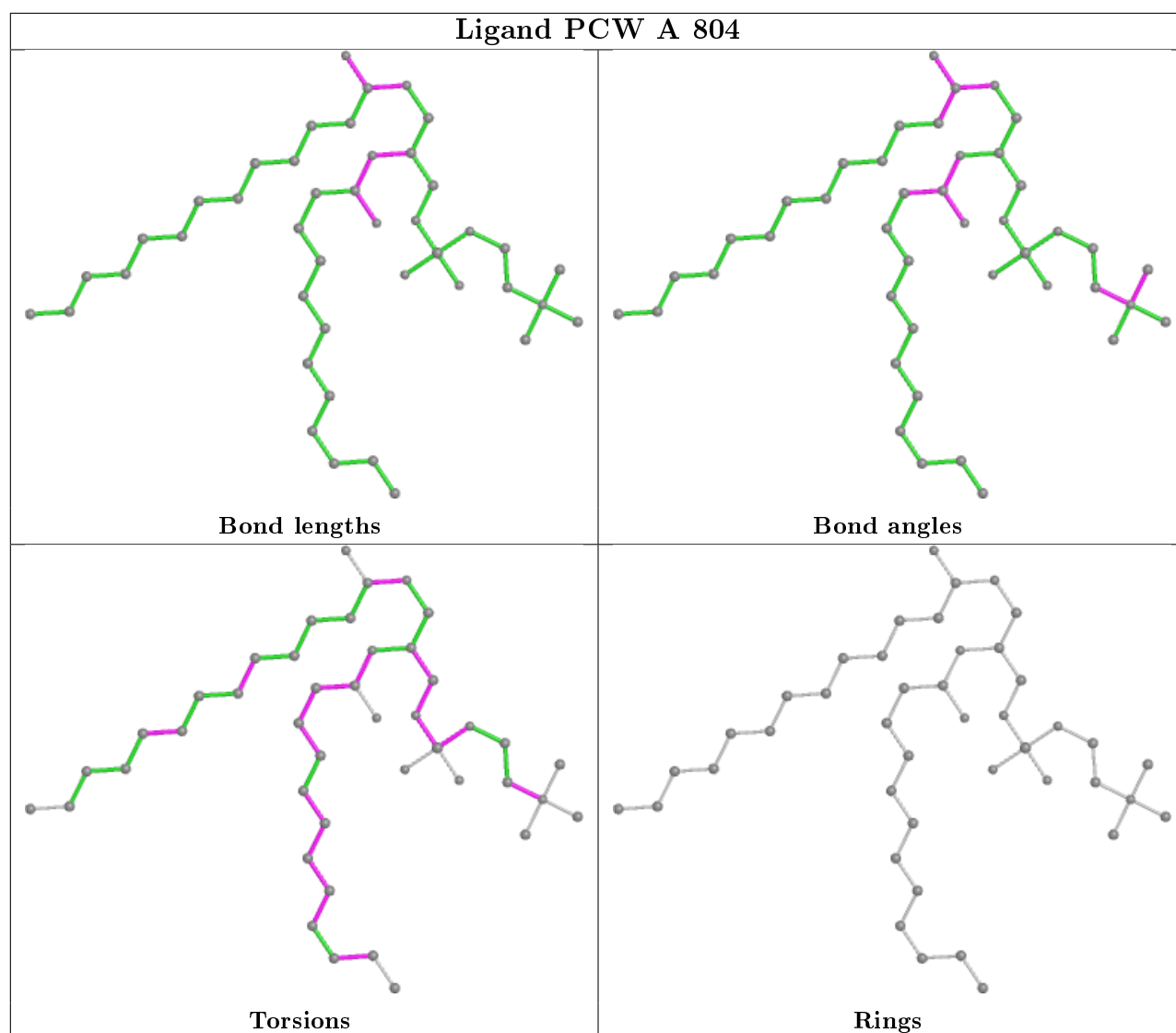
There are no ring outliers.

2 monomers are involved in 4 short contacts:

Mol	Chain	Res	Type	Clashes	Symm-Clashes
5	A	804	PCW	3	0
4	A	801	NAG	1	0

The following is a two-dimensional graphical depiction of Mogul quality analysis of bond lengths, bond angles, torsion angles, and ring geometry for all instances of the Ligand of Interest. In addition, ligands with molecular weight > 250 and outliers as shown on the validation Tables will also be included. For torsion angles, if less than 5% of the Mogul distribution of torsion angles is within 10 degrees of the torsion angle in question, then that torsion angle is considered an outlier. Any bond that is central to one or more torsion angles identified as an outlier by Mogul will be highlighted in the graph. For rings, the root-mean-square deviation (RMSD) between the ring in question and similar rings identified by Mogul is calculated over all ring torsion angles. If the average RMSD is greater than 60 degrees and the minimal RMSD between the ring in question and any Mogul-identified rings is also greater than 60 degrees, then that ring is considered an outlier. The outliers are highlighted in purple. The color gray indicates Mogul did not find sufficient equivalents in the CSD to analyse the geometry.





## 5.7 Other polymers [i](#)

There are no such residues in this entry.

## 5.8 Polymer linkage issues [i](#)

There are no chain breaks in this entry.

## 6 Fit of model and data

### 6.1 Protein, DNA and RNA chains

In the following table, the column labelled ‘#RSRZ> 2’ contains the number (and percentage) of RSRZ outliers, followed by percent RSRZ outliers for the chain as percentile scores relative to all X-ray entries and entries of similar resolution. The OWAB column contains the minimum, median, 95<sup>th</sup> percentile and maximum values of the occupancy-weighted average B-factor per residue. The column labelled ‘Q< 0.9’ lists the number of (and percentage) of residues with an average occupancy less than 0.9.

Mol	Chain	Analysed	<RSRZ>	#RSRZ>2	OWAB(Å <sup>2</sup> )	Q<0.9
1	A	549/568 (96%)	0.16	18 (3%) 46 30	33, 63, 142, 237	0
2	B	190/195 (97%)	0.20	4 (2%) 63 49	34, 58, 104, 250	0
All	All	739/763 (96%)	0.17	22 (2%) 50 34	33, 61, 138, 250	0

All (22) RSRZ outliers are listed below:

Mol	Chain	Res	Type	RSRZ
2	B	240	ASN	4.7
2	B	279	GLY	3.8
2	B	241	GLN	3.6
2	B	242	GLY	2.6
1	A	567	PRO	2.5
1	A	296	ASN	2.5
1	A	45	SER	2.5
1	A	293	GLY	2.4
1	A	47	PRO	2.4
1	A	67	ILE	2.4
1	A	566	SER	2.4
1	A	322	PHE	2.3
1	A	58	ASP	2.3
1	A	547	GLU	2.2
1	A	548	THR	2.2
1	A	73	ARG	2.2
1	A	27	SER	2.2
1	A	543	SER	2.1
1	A	539	CYS	2.0
1	A	572	GLY	2.0
1	A	37	ASP	2.0
1	A	50	LEU	2.0

## 6.2 Non-standard residues in protein, DNA, RNA chains [i](#)

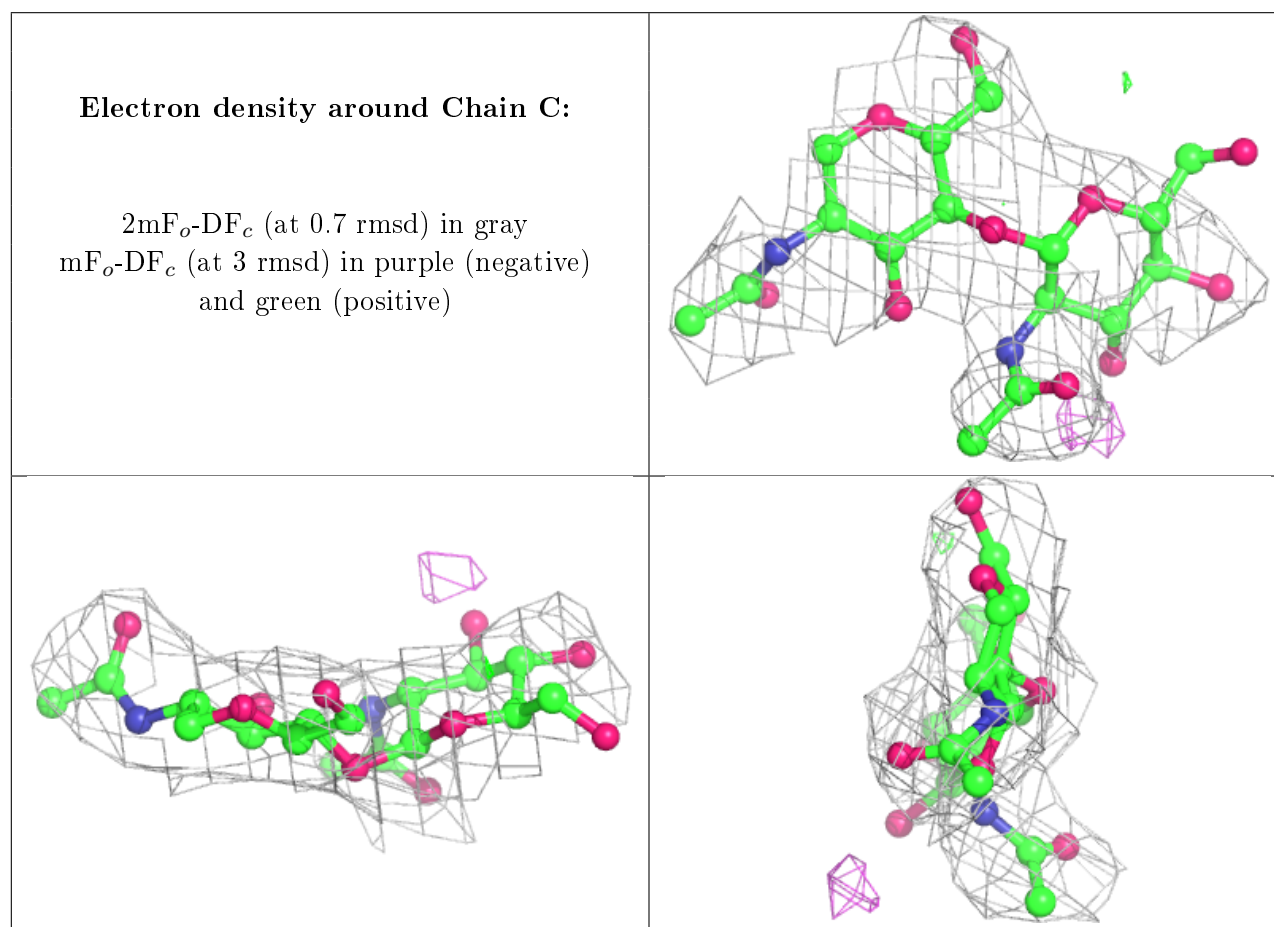
There are no non-standard protein/DNA/RNA residues in this entry.

## 6.3 Carbohydrates [i](#)

In the following table, the Atoms column lists the number of modelled atoms in the group and the number defined in the chemical component dictionary. The B-factors column lists the minimum, median, 95<sup>th</sup> percentile and maximum values of B factors of atoms in the group. The column labelled 'Q<0.9' lists the number of atoms with occupancy less than 0.9.

Mol	Type	Chain	Res	Atoms	RSCC	RSR	B-factors(Å <sup>2</sup> )	Q<0.9
3	NAG	C	2	14/15	0.79	0.27	78,87,91,94	0
3	NAG	C	1	14/15	0.94	0.17	36,48,55,67	0

The following is a graphical depiction of the model fit to experimental electron density for oligosaccharide. Each fit is shown from different orientation to approximate a three-dimensional view.

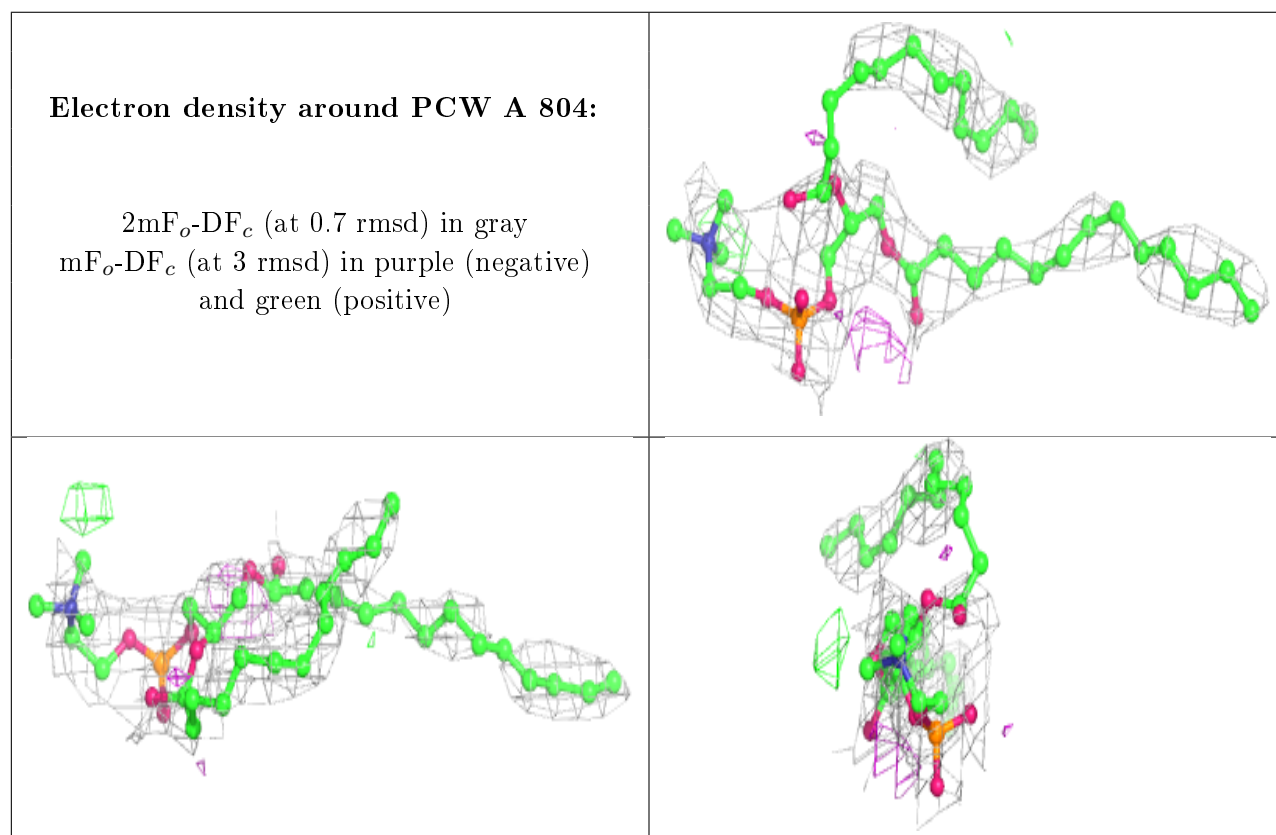


## 6.4 Ligands [i](#)

In the following table, the Atoms column lists the number of modelled atoms in the group and the number defined in the chemical component dictionary. The B-factors column lists the minimum, median, 95<sup>th</sup> percentile and maximum values of B factors of atoms in the group. The column labelled 'Q<0.9' lists the number of atoms with occupancy less than 0.9.

Mol	Type	Chain	Res	Atoms	RSCC	RSR	B-factors(Å <sup>2</sup> )	Q<0.9
5	PCW	A	804	43/54	0.82	0.41	36,94,147,172	0
4	NAG	A	801	14/15	0.85	0.20	55,67,74,74	0
6	CL	A	805	1/1	0.92	0.13	46,46,46,46	0

The following is a graphical depiction of the model fit to experimental electron density of all instances of the Ligand of Interest. In addition, ligands with molecular weight > 250 and outliers as shown on the geometry validation Tables will also be included. Each fit is shown from different orientation to approximate a three-dimensional view.



## 6.5 Other polymers [i](#)

There are no such residues in this entry.