



# Full wwPDB X-ray Structure Validation Report ⓘ

May 13, 2020 – 11:25 am BST

PDB ID : 5D12  
Title : Kinase domain of cSrc in complex with RL40  
Authors : Becker, C.; Richters, A.; Engel, J.; Rauh, D.  
Deposited on : 2015-08-03  
Resolution : 3.00 Å(reported)

This is a Full wwPDB X-ray Structure Validation Report for a publicly released PDB entry.

We welcome your comments at [validation@mail.wwpdb.org](mailto:validation@mail.wwpdb.org)

A user guide is available at

<https://www.wwpdb.org/validation/2017/XrayValidationReportHelp>

with specific help available everywhere you see the ⓘ symbol.

---

The following versions of software and data (see [references ⓘ](#)) were used in the production of this report:

MolProbity : 4.02b-467  
Mogul : 1.8.5 (274361), CSD as541be (2020)  
Xtriage (Phenix) : 1.13  
EDS : 2.11  
buster-report : 1.1.7 (2018)  
Percentile statistics : 20191225.v01 (using entries in the PDB archive December 25th 2019)  
Refmac : 5.8.0158  
CCP4 : 7.0.044 (Gargrove)  
Ideal geometry (proteins) : Engh & Huber (2001)  
Ideal geometry (DNA, RNA) : Parkinson et al. (1996)  
Validation Pipeline (wwPDB-VP) : 2.11

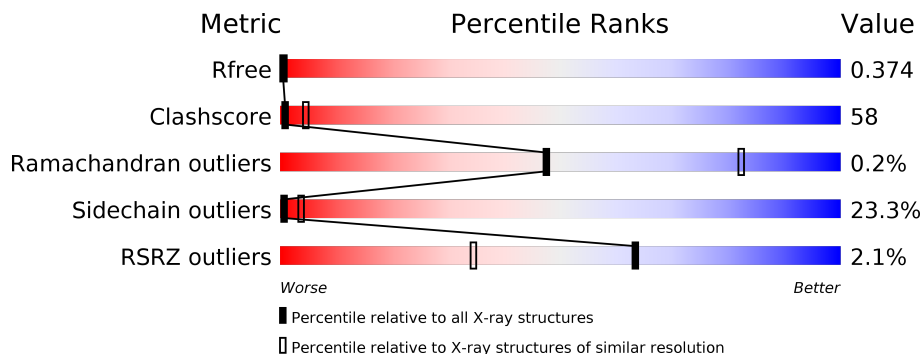
# 1 Overall quality at a glance

The following experimental techniques were used to determine the structure:

*X-RAY DIFFRACTION*

The reported resolution of this entry is 3.00 Å.

Percentile scores (ranging between 0-100) for global validation metrics of the entry are shown in the following graphic. The table shows the number of entries on which the scores are based.



Metric	Whole archive (#Entries)	Similar resolution (#Entries, resolution range(Å))
$R_{free}$	130704	2092 (3.00-3.00)
Clashscore	141614	2416 (3.00-3.00)
Ramachandran outliers	138981	2333 (3.00-3.00)
Sidechain outliers	138945	2336 (3.00-3.00)
RSRZ outliers	127900	1990 (3.00-3.00)

The table below summarises the geometric issues observed across the polymeric chains and their fit to the electron density. The red, orange, yellow and green segments on the lower bar indicate the fraction of residues that contain outliers for  $\geq 3$ , 2, 1 and 0 types of geometric quality criteria respectively. A grey segment represents the fraction of residues that are not modelled. The numeric value for each fraction is indicated below the corresponding segment, with a dot representing fractions  $\leq 5\%$ . The upper red bar (where present) indicates the fraction of residues that have poor fit to the electron density. The numeric value is given above the bar.

Mol	Chain	Length	Quality of chain
1	A	286	
1	B	286	

## 2 Entry composition

There are 2 unique types of molecules in this entry. The entry contains 4158 atoms, of which 0 are hydrogens and 0 are deuteriums.

In the tables below, the ZeroOcc column contains the number of atoms modelled with zero occupancy, the AltConf column contains the number of residues with at least one atom in alternate conformation and the Trace column contains the number of residues modelled with at most 2 atoms.

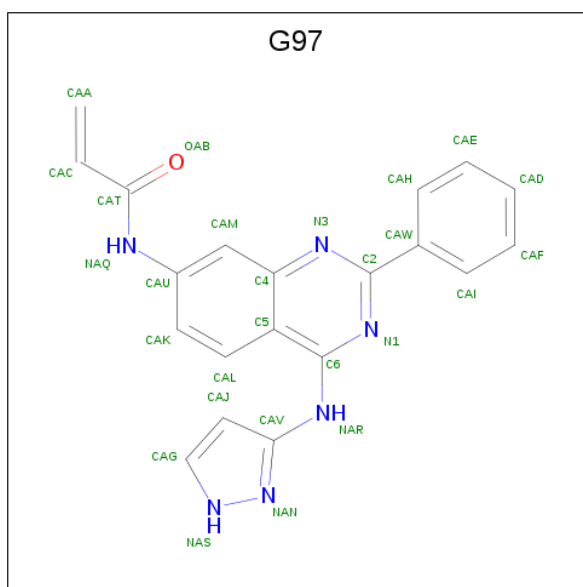
- Molecule 1 is a protein called Proto-oncogene tyrosine-protein kinase Src.

Mol	Chain	Residues	Atoms					ZeroOcc	AltConf	Trace
			Total	C	N	O	S			
1	A	260	2091	1344	351	379	17	0	1	0
1	B	253	2013	1294	336	367	16	0	2	0

There are 10 discrepancies between the modelled and reference sequences:

Chain	Residue	Modelled	Actual	Comment	Reference
A	248	GLY	-	expression tag	UNP P00523
A	249	HIS	-	expression tag	UNP P00523
A	250	MET	-	expression tag	UNP P00523
A	338	MET	THR	engineered mutation	UNP P00523
A	345	CYS	SER	engineered mutation	UNP P00523
B	248	GLY	-	expression tag	UNP P00523
B	249	HIS	-	expression tag	UNP P00523
B	250	MET	-	expression tag	UNP P00523
B	338	MET	THR	engineered mutation	UNP P00523
B	345	CYS	SER	engineered mutation	UNP P00523

- Molecule 2 is N-[2-phenyl-4-(1H-pyrazol-3-ylamino)quinazolin-7-yl]prop-2-enamide (three-letter code: G97) (formula: C<sub>20</sub>H<sub>16</sub>N<sub>6</sub>O).

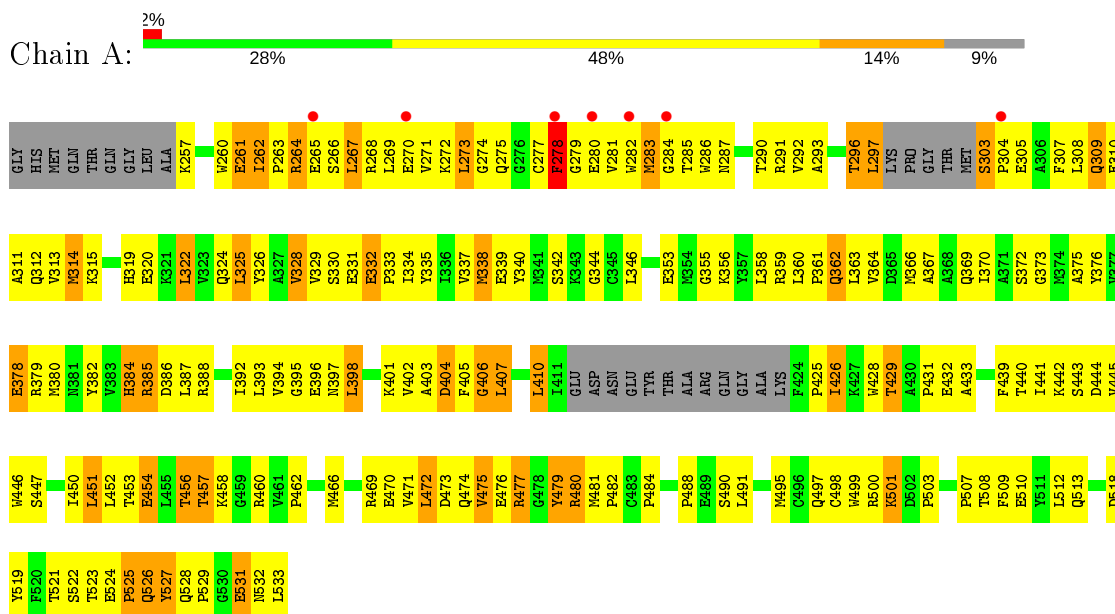


Mol	Chain	Residues	Atoms				ZeroOcc	AltConf
			Total	C	N	O		
2	A	1	27	20	6	1	0	0
2	B	1	27	20	6	1	0	0

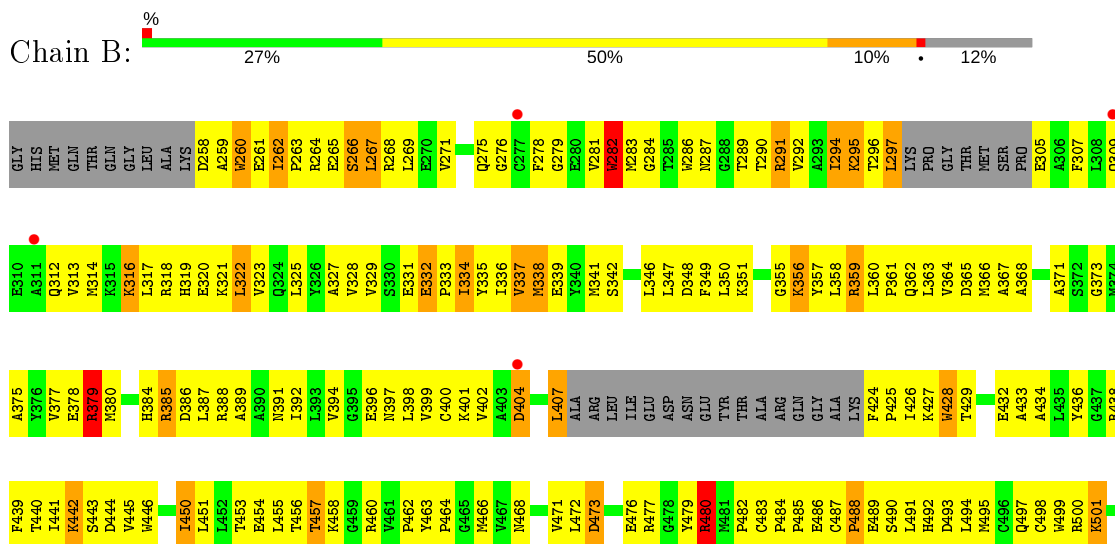
### 3 Residue-property plots [i](#)

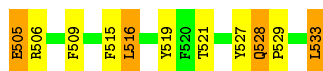
These plots are drawn for all protein, RNA and DNA chains in the entry. The first graphic for a chain summarises the proportions of the various outlier classes displayed in the second graphic. The second graphic shows the sequence view annotated by issues in geometry and electron density. Residues are color-coded according to the number of geometric quality criteria for which they contain at least one outlier: green = 0, yellow = 1, orange = 2 and red = 3 or more. A red dot above a residue indicates a poor fit to the electron density ( $RSRZ > 2$ ). Stretches of 2 or more consecutive residues without any outlier are shown as a green connector. Residues present in the sample, but not in the model, are shown in grey.

- Molecule 1: Proto-oncogene tyrosine-protein kinase Src



- Molecule 1: Proto-oncogene tyrosine-protein kinase Src





## 4 Data and refinement statistics i

Property	Value	Source
Space group	P 1	Depositor
Cell constants a, b, c, $\alpha$ , $\beta$ , $\gamma$	42.27Å 63.79Å 74.97Å 101.56° 89.91° 89.98°	Depositor
Resolution (Å)	43.49 – 3.00 43.49 – 3.00	Depositor EDS
% Data completeness (in resolution range)	94.7 (43.49-3.00) 94.7 (43.49-3.00)	Depositor EDS
$R_{merge}$	0.19	Depositor
$R_{sym}$	(Not available)	Depositor
$\langle I/\sigma(I) \rangle$ <sup>1</sup>	4.21 (at 3.01Å)	Xtrriage
Refinement program	REFMAC 5.8.0073	Depositor
R, $R_{free}$	0.290 , 0.376 0.294 , 0.374	Depositor DCC
$R_{free}$ test set	728 reflections (5.00%)	wwPDB-VP
Wilson B-factor (Å <sup>2</sup> )	36.8	Xtrriage
Anisotropy	0.363	Xtrriage
Bulk solvent $k_{sol}$ (e/Å <sup>3</sup> ), $B_{sol}$ (Å <sup>2</sup> )	0.32 , 45.5	EDS
L-test for twinning <sup>2</sup>	$\langle  L  \rangle = 0.50$ , $\langle L^2 \rangle = 0.33$	Xtrriage
Estimated twinning fraction	0.001 for h,-k,-l	Xtrriage
$F_o, F_c$ correlation	0.82	EDS
Total number of atoms	4158	wwPDB-VP
Average B, all atoms (Å <sup>2</sup> )	33.0	wwPDB-VP

Xtrriage's analysis on translational NCS is as follows: *The largest off-origin peak in the Patterson function is 16.63% of the height of the origin peak. No significant pseudotranslation is detected.*

<sup>1</sup>Intensities estimated from amplitudes.

<sup>2</sup>Theoretical values of  $\langle |L| \rangle$ ,  $\langle L^2 \rangle$  for acentric reflections are 0.5, 0.333 respectively for untwinned datasets, and 0.375, 0.2 for perfectly twinned datasets.

## 5 Model quality [i](#)

### 5.1 Standard geometry [i](#)

Bond lengths and bond angles in the following residue types are not validated in this section: G97

The Z score for a bond length (or angle) is the number of standard deviations the observed value is removed from the expected value. A bond length (or angle) with  $|Z| > 5$  is considered an outlier worth inspection. RMSZ is the root-mean-square of all Z scores of the bond lengths (or angles).

Mol	Chain	Bond lengths		Bond angles	
		RMSZ	# $ Z  > 5$	RMSZ	# $ Z  > 5$
1	A	0.71	2/2144 (0.1%)	0.94	2/2903 (0.1%)
1	B	0.70	1/2066 (0.0%)	0.94	2/2801 (0.1%)
All	All	0.71	3/4210 (0.1%)	0.94	4/5704 (0.1%)

All (3) bond length outliers are listed below:

Mol	Chain	Res	Type	Atoms	Z	Observed(Å)	Ideal(Å)
1	A	526[A]	GLN	CA-C	6.41	1.69	1.52
1	A	526[B]	GLN	CA-C	6.41	1.69	1.52
1	B	282	TRP	CB-CG	-5.83	1.39	1.50

All (4) bond angle outliers are listed below:

Mol	Chain	Res	Type	Atoms	Z	Observed(°)	Ideal(°)
1	A	525	PRO	C-N-CA	6.07	136.87	121.70
1	B	480	ARG	NE-CZ-NH1	5.79	123.19	120.30
1	B	379	ARG	NE-CZ-NH1	5.74	123.17	120.30
1	A	406	GLY	N-CA-C	-5.53	99.27	113.10

There are no chirality outliers.

There are no planarity outliers.

### 5.2 Too-close contacts [i](#)

In the following table, the Non-H and H(model) columns list the number of non-hydrogen atoms and hydrogen atoms in the chain respectively. The H(added) column lists the number of hydrogen atoms added and optimized by MolProbity. The Clashes column lists the number of clashes within the asymmetric unit, whereas Symm-Clashes lists symmetry related clashes.



Mol	Chain	Non-H	H(model)	H(added)	Clashes	Symm-Clashes
1	A	2091	0	2062	251	0
1	B	2013	0	1967	222	1
2	A	27	0	16	7	0
2	B	27	0	16	2	0
All	All	4158	0	4061	476	1

The all-atom clashscore is defined as the number of clashes found per 1000 atoms (including hydrogen atoms). The all-atom clashscore for this structure is 58.

All (476) close contacts within the same asymmetric unit are listed below, sorted by their clash magnitude.

Atom-1	Atom-2	Interatomic distance (Å)	Clash overlap (Å)
1:A:471:VAL:O	1:A:475:VAL:CG2	1.66	1.43
1:A:426:ILE:HD13	1:A:472:LEU:CD1	1.51	1.41
1:A:426:ILE:CD1	1:A:472:LEU:CD1	1.98	1.40
1:A:426:ILE:CD1	1:A:472:LEU:HD13	1.53	1.35
1:B:329:VAL:O	1:B:334:ILE:CG2	1.71	1.34
1:B:428:TRP:CZ2	1:B:454:GLU:OE1	1.85	1.29
1:B:428:TRP:CE2	1:B:454:GLU:OE1	1.87	1.25
1:A:471:VAL:O	1:A:475:VAL:HG22	1.29	1.21
1:B:329:VAL:O	1:B:334:ILE:HG23	1.31	1.20
1:B:286:TRP:HB2	1:B:292:VAL:HG21	1.24	1.17
1:B:296:THR:HG21	1:B:335:TYR:CE1	1.80	1.16
1:B:428:TRP:NE1	1:B:454:GLU:OE1	1.77	1.14
1:B:325:LEU:HD12	1:B:337:VAL:O	1.44	1.12
1:B:296:THR:CG2	1:B:335:TYR:CD1	2.33	1.12
1:A:271:VAL:O	1:A:282:TRP:HB3	1.52	1.08
1:B:296:THR:HG21	1:B:335:TYR:CD1	1.89	1.08
1:A:384:HIS:O	1:A:444:ASP:OD1	1.70	1.08
1:A:385:ARG:HB2	1:A:407:LEU:HD13	1.07	1.04
1:A:385:ARG:HB2	1:A:407:LEU:CD1	1.86	1.04
1:A:471:VAL:O	1:A:475:VAL:HG23	1.56	1.03
1:A:519:TYR:CE1	1:A:523:THR:HG21	1.95	1.01
1:A:426:ILE:HD12	1:A:472:LEU:CD1	1.87	1.00
1:B:331:GLU:O	1:B:333:PRO:O	1.80	1.00
1:A:508:THR:O	1:A:512:LEU:HG	1.62	0.99
1:B:329:VAL:O	1:B:334:ILE:HG22	1.61	0.98
1:A:425:PRO:O	1:A:429:THR:OG1	1.81	0.97
1:A:334:ILE:O	1:A:335:TYR:CD2	2.17	0.96
1:B:428:TRP:HZ2	1:B:454:GLU:OE1	1.48	0.96
1:B:269:LEU:HD21	1:B:335:TYR:HE1	1.31	0.95
1:A:272:LYS:NZ	1:A:275:GLN:OE1	2.00	0.94

*Continued on next page...*

*Continued from previous page...*

Atom-1	Atom-2	Interatomic distance (Å)	Clash overlap (Å)
1:B:427:LYS:HE2	1:B:463:TYR:HB2	1.49	0.94
1:A:296:THR:HB	1:A:335:TYR:CE2	2.02	0.94
1:A:325:LEU:HD12	1:A:337:VAL:O	1.64	0.94
1:A:378:GLU:OE2	1:A:508:THR:OG1	1.86	0.94
1:A:426:ILE:HD12	1:A:472:LEU:HD12	1.49	0.94
1:A:519:TYR:CD1	1:A:523:THR:HG21	2.02	0.94
1:B:450:ILE:O	1:B:453:THR:OG1	1.85	0.94
1:A:453:THR:O	1:A:457:THR:OG1	1.85	0.94
1:A:426:ILE:CD1	1:A:472:LEU:HD12	1.96	0.93
1:B:314:MET:CE	1:B:325:LEU:HB2	1.99	0.93
1:A:370:ILE:HD11	1:A:392:ILE:HG21	1.51	0.92
1:A:385:ARG:CB	1:A:407:LEU:HD13	1.98	0.92
1:B:362:GLN:O	1:B:366:MET:HG3	1.69	0.92
1:A:286:TRP:N	1:A:290:THR:O	2.03	0.91
1:B:309:GLN:NE2	1:B:312:GLN:CB	2.33	0.91
1:A:279:GLY:HA2	1:A:297:LEU:HA	1.53	0.90
1:A:275:GLN:HG3	1:A:279:GLY:O	1.72	0.89
1:A:426:ILE:HD13	1:A:472:LEU:HD13	0.91	0.89
1:A:495:MET:O	1:A:498:CYS:HB2	1.70	0.89
1:A:497:GLN:HG2	1:A:500:ARG:NH1	1.89	0.87
1:B:473:ASP:O	1:B:477:ARG:HG3	1.73	0.87
1:B:320:GLU:O	1:B:401:LYS:HE2	1.73	0.87
1:B:296:THR:HG22	1:B:335:TYR:CD1	2.08	0.86
1:B:286:TRP:HB2	1:B:292:VAL:CG2	2.04	0.86
1:A:450:ILE:HD13	1:A:499:TRP:CZ2	2.11	0.85
1:B:480:ARG:HG2	1:B:480:ARG:HH11	1.41	0.84
1:A:283:MET:HG3	1:A:340:TYR:CE1	2.14	0.82
1:A:519:TYR:CE1	1:A:523:THR:CG2	2.63	0.82
1:A:297:LEU:CD2	1:A:307:PHE:CG	2.62	0.82
1:B:307:PHE:HZ	1:B:336:ILE:HG13	1.44	0.82
1:B:264:ARG:NH2	1:B:331:GLU:O	2.12	0.81
1:A:311:ALA:O	1:A:315:LYS:HG3	1.80	0.81
1:A:378:GLU:CD	1:A:508:THR:HG1	1.83	0.81
1:A:279:GLY:C	1:A:280:GLU:HG3	2.00	0.80
1:A:296:THR:HB	1:A:335:TYR:HE2	1.46	0.79
1:A:426:ILE:HD13	1:A:472:LEU:HD11	1.64	0.79
1:B:325:LEU:CD1	1:B:337:VAL:O	2.29	0.79
1:B:359:ARG:O	1:B:363:LEU:HG	1.80	0.79
1:B:494:LEU:HD22	1:B:515:PHE:CE1	2.17	0.79
1:A:314:MET:HG3	1:A:405:PHE:CD2	2.18	0.78
1:B:497:GLN:O	1:B:500:ARG:HG3	1.83	0.78

*Continued on next page...*

*Continued from previous page...*

Atom-1	Atom-2	Interatomic distance (Å)	Clash overlap (Å)
1:A:270:GLU:HB2	1:A:284:GLY:HA2	1.66	0.78
1:B:424:PHE:CB	1:B:425:PRO:HA	2.12	0.78
1:B:346:LEU:HD11	1:B:366:MET:CE	2.14	0.77
1:A:440:THR:OG1	1:A:442:LYS:HB2	1.85	0.77
1:B:379:ARG:HH11	1:B:379:ARG:HG3	1.50	0.77
1:A:322:LEU:CD2	1:A:405:PHE:HZ	1.98	0.77
1:B:286:TRP:CB	1:B:292:VAL:HG21	2.13	0.77
1:A:286:TRP:CE2	1:A:287:ASN:HB2	2.21	0.76
1:A:454:GLU:HA	1:A:457:THR:OG1	1.84	0.76
1:B:346:LEU:HD11	1:B:366:MET:HE2	1.68	0.76
1:A:325:LEU:CD1	1:A:337:VAL:O	2.34	0.75
1:A:378:GLU:CD	1:A:508:THR:OG1	2.24	0.75
1:A:277:CYS:C	1:A:278:PHE:CD2	2.60	0.75
1:A:332:GLU:HA	1:A:334:ILE:N	2.00	0.75
1:B:262:ILE:HD13	1:B:286:TRP:HE1	1.50	0.75
1:B:297:LEU:HD12	1:B:334:ILE:O	1.86	0.75
1:A:271:VAL:O	1:A:282:TRP:CB	2.31	0.75
1:B:269:LEU:HD21	1:B:335:TYR:CE1	2.19	0.75
1:B:505:GLU:OE2	1:B:505:GLU:N	2.20	0.75
1:B:314:MET:HE2	1:B:325:LEU:HB2	1.67	0.74
1:B:263:PRO:O	1:B:266:SER:OG	2.04	0.74
1:A:261:GLU:OE2	1:A:331:GLU:OE2	2.06	0.73
1:A:325:LEU:HD12	1:A:326:TYR:H	1.53	0.73
1:A:262:ILE:HG13	1:A:263:PRO:CD	2.18	0.73
1:A:279:GLY:O	1:A:280:GLU:CG	2.37	0.73
1:A:262:ILE:HG13	1:A:263:PRO:HD2	1.70	0.72
1:A:286:TRP:HB3	1:A:290:THR:HG23	1.71	0.72
1:B:307:PHE:CZ	1:B:336:ILE:HG13	2.24	0.72
1:B:356:LYS:HB3	1:B:357:TYR:CD1	2.25	0.72
1:A:353:GLU:O	1:A:356:LYS:HG3	1.88	0.72
1:B:440:THR:HG22	1:B:441:ILE:HG22	1.72	0.71
1:A:362:GLN:O	1:A:366:MET:HG3	1.90	0.71
1:A:441:ILE:O	1:A:445:VAL:HG23	1.90	0.71
1:A:531:GLU:HG3	1:A:532:ASN:N	2.05	0.71
1:A:279:GLY:O	1:A:280:GLU:HG3	1.91	0.71
1:A:453:THR:C	1:A:457:THR:HG1	1.94	0.70
1:A:274:GLY:HA3	2:A:601:G97:HAF	1.72	0.70
1:B:262:ILE:CD1	1:B:267:LEU:HD22	2.22	0.70
1:B:360:LEU:HB3	1:B:361:PRO:HD3	1.74	0.70
1:B:296:THR:HB	1:B:297:LEU:HD13	1.75	0.69
1:A:382:TYR:CE1	1:A:410:LEU:HD13	2.28	0.69

*Continued on next page...*

*Continued from previous page...*

Atom-1	Atom-2	Interatomic distance (Å)	Clash overlap (Å)
1:A:261:GLU:OE1	1:A:262:ILE:N	2.25	0.69
1:A:519:TYR:CD1	1:A:523:THR:CG2	2.76	0.69
1:A:474:GLN:O	1:A:477:ARG:HB3	1.92	0.69
1:B:258:ASP:OD1	1:B:259:ALA:N	2.25	0.69
1:A:262:ILE:HG13	1:A:263:PRO:N	2.06	0.68
1:A:277:CYS:O	1:A:278:PHE:CD2	2.47	0.68
1:B:314:MET:HE1	1:B:325:LEU:HB2	1.75	0.68
1:A:519:TYR:O	1:A:523:THR:HB	1.92	0.68
1:A:453:THR:HG23	1:A:484:PRO:HG3	1.75	0.67
1:A:453:THR:C	1:A:457:THR:OG1	2.32	0.67
1:B:275:GLN:HG3	1:B:276:GLY:H	1.59	0.67
1:A:277:CYS:O	1:A:278:PHE:HD2	1.77	0.67
1:B:267:LEU:HD23	1:B:267:LEU:H	1.59	0.67
1:A:378:GLU:OE1	1:A:508:THR:OG1	2.13	0.66
1:A:387:LEU:C	1:A:388:ARG:HG3	2.13	0.66
1:A:286:TRP:CD2	1:A:287:ASN:HB2	2.30	0.66
1:A:322:LEU:HD21	1:A:405:PHE:HZ	1.60	0.66
1:A:293:ALA:HB3	1:A:338:MET:HE2	1.78	0.66
1:B:359:ARG:C	1:B:363:LEU:HG	2.16	0.66
1:A:532:ASN:O	1:A:533:LEU:HD23	1.96	0.66
1:B:500:ARG:HD2	1:B:505:GLU:HB3	1.77	0.65
1:B:378:GLU:HG3	1:B:441:ILE:HG12	1.77	0.65
1:A:346:LEU:HD11	1:A:366:MET:HE1	1.78	0.65
2:A:601:G97:N1	2:A:601:G97:HAJ	2.12	0.65
1:B:359:ARG:O	1:B:363:LEU:N	2.26	0.65
1:B:494:LEU:HD22	1:B:515:PHE:CD1	2.31	0.65
1:A:264:ARG:HB2	1:A:264:ARG:CZ	2.27	0.65
1:A:426:ILE:CD1	1:A:472:LEU:HD11	2.20	0.65
1:B:384:HIS:O	1:B:444:ASP:OD1	2.15	0.65
1:A:370:ILE:HD11	1:A:392:ILE:CG2	2.26	0.64
1:B:373:GLY:O	1:B:377:VAL:HG23	1.96	0.64
1:B:314:MET:SD	1:B:404:ASP:OD2	2.55	0.64
1:A:406:GLY:O	1:A:407:LEU:HB2	1.96	0.64
1:B:358:LEU:O	1:B:359:ARG:NH1	2.31	0.64
1:B:360:LEU:HB3	1:B:361:PRO:CD	2.28	0.64
1:B:346:LEU:CD1	1:B:366:MET:CE	2.76	0.63
1:B:480:ARG:CG	1:B:480:ARG:HH11	2.11	0.63
1:A:385:ARG:HG3	1:A:407:LEU:O	1.99	0.63
1:A:275:GLN:HG2	1:A:275:GLN:O	1.99	0.63
1:A:457:THR:O	1:A:458:LYS:HB2	1.97	0.63
1:B:296:THR:HG22	1:B:335:TYR:CG	2.34	0.62

*Continued on next page...*

*Continued from previous page...*

Atom-1	Atom-2	Interatomic distance (Å)	Clash overlap (Å)
2:A:601:G97:N1	2:A:601:G97:CAJ	2.59	0.62
1:A:386:ASP:HB2	1:A:407:LEU:HD12	1.82	0.62
1:A:264:ARG:NH1	1:A:264:ARG:HB2	2.14	0.62
1:B:346:LEU:CD1	1:B:366:MET:HE1	2.30	0.62
1:A:260:TRP:HZ3	1:A:326:TYR:O	1.82	0.62
1:B:275:GLN:HG3	1:B:276:GLY:N	2.15	0.62
1:B:359:ARG:HH11	1:B:359:ARG:HG3	1.64	0.62
1:A:303:SER:N	1:A:304:PRO:CD	2.63	0.62
1:A:356:LYS:O	1:A:359:ARG:NH2	2.32	0.62
1:A:297:LEU:HD22	1:A:307:PHE:CG	2.34	0.61
1:A:319:HIS:HD2	1:A:376:TYR:CD1	2.18	0.61
1:B:488:PRO:O	1:B:491:LEU:N	2.29	0.61
1:A:397:ASN:O	1:A:398:LEU:HB2	2.01	0.61
1:B:494:LEU:HD22	1:B:515:PHE:HE1	1.66	0.61
1:A:497:GLN:HG2	1:A:500:ARG:HH12	1.66	0.61
1:A:507:PRO:HB2	1:A:512:LEU:HD21	1.82	0.61
1:A:322:LEU:HD23	1:A:405:PHE:HZ	1.65	0.61
1:A:273:LEU:HD12	1:A:281:VAL:HG12	1.82	0.61
1:A:518:ASP:OD2	1:B:460:ARG:NE	2.34	0.61
1:B:262:ILE:CD1	1:B:286:TRP:HE1	2.14	0.60
1:B:432:GLU:HG2	1:B:438:ARG:HB2	1.82	0.60
1:A:265:GLU:O	1:A:266:SER:HB3	2.00	0.60
1:B:278:PHE:CE1	1:B:407:LEU:HD22	2.36	0.60
1:A:451:LEU:HA	1:A:454:GLU:OE2	2.02	0.60
1:B:500:ARG:HB2	1:B:506:ARG:HG3	1.83	0.60
1:A:355:GLY:HA2	1:A:358:LEU:HD12	1.84	0.59
1:A:378:GLU:HG3	1:A:441:ILE:HG12	1.84	0.59
1:A:338:MET:HE1	2:A:601:G97:HAG	1.85	0.59
1:A:362:GLN:O	1:A:366:MET:CG	2.51	0.59
1:A:322:LEU:HD23	1:A:405:PHE:CZ	2.37	0.59
1:B:360:LEU:CD1	1:B:533:LEU:HD13	2.32	0.59
1:A:279:GLY:C	1:A:280:GLU:CG	2.71	0.59
1:A:271:VAL:HG12	1:A:272:LYS:N	2.18	0.59
1:B:440:THR:HG22	1:B:441:ILE:N	2.18	0.59
1:B:295:LYS:NZ	1:B:295:LYS:HB2	2.18	0.59
2:B:601:G97:HAJ	2:B:601:G97:N1	2.17	0.59
1:A:296:THR:O	1:A:297:LEU:HB3	2.02	0.58
1:A:384:HIS:CE1	1:A:404:ASP:O	2.56	0.58
1:B:267:LEU:HD23	1:B:267:LEU:N	2.18	0.58
1:B:307:PHE:CZ	1:B:336:ILE:CG1	2.86	0.58
1:B:466:MET:CE	1:B:471:VAL:HA	2.33	0.58

*Continued on next page...*

*Continued from previous page...*

Atom-1	Atom-2	Interatomic distance (Å)	Clash overlap (Å)
1:B:436:TYR:HB2	1:B:438:ARG:HD2	1.85	0.58
1:B:275:GLN:O	1:B:279:GLY:O	2.21	0.58
1:A:322:LEU:CD2	1:A:405:PHE:CZ	2.85	0.58
1:A:286:TRP:CB	1:A:290:THR:HG23	2.31	0.58
1:A:319:HIS:CD2	1:A:376:TYR:CD1	2.91	0.58
1:B:313:VAL:O	1:B:317:LEU:HD23	2.04	0.58
1:B:307:PHE:CE2	1:B:336:ILE:HD11	2.39	0.57
1:B:313:VAL:HG23	1:B:314:MET:H	1.70	0.57
1:B:264:ARG:CZ	1:B:329:VAL:HG11	2.34	0.57
1:A:339:GLU:O	1:A:339:GLU:HG3	2.03	0.57
1:B:313:VAL:HG23	1:B:314:MET:N	2.18	0.57
1:B:440:THR:HG22	1:B:441:ILE:H	1.69	0.57
1:A:479:TYR:O	1:A:480:ARG:NH1	2.38	0.56
1:A:264:ARG:O	1:A:267:LEU:CD1	2.54	0.56
1:B:482:PRO:O	1:B:484:PRO:HD3	2.04	0.56
1:A:265:GLU:CD	1:A:266:SER:H	2.08	0.56
1:A:311:ALA:HA	1:A:314:MET:HB2	1.88	0.56
1:A:297:LEU:HD22	1:A:307:PHE:CD1	2.41	0.56
1:A:329:VAL:O	1:A:329:VAL:HG12	2.05	0.56
1:B:262:ILE:CD1	1:B:267:LEU:CD2	2.84	0.56
1:B:258:ASP:N	1:B:261:GLU:OE1	2.39	0.56
1:A:428:TRP:CH2	1:A:462:PRO:HD3	2.41	0.55
1:B:359:ARG:HG3	1:B:359:ARG:NH1	2.21	0.55
1:A:273:LEU:HD12	1:A:281:VAL:O	2.06	0.55
1:A:324:GLN:HG3	1:A:325:LEU:O	2.07	0.55
1:A:426:ILE:HD11	1:A:472:LEU:HD13	1.73	0.55
1:A:528:GLN:HG3	1:A:529:PRO:HD2	1.88	0.55
1:A:406:GLY:O	1:A:407:LEU:CB	2.54	0.55
1:B:384:HIS:CD2	1:B:386:ASP:H	2.25	0.55
1:B:396:GLU:O	1:B:399:VAL:HG23	2.07	0.55
2:B:601:G97:CAJ	2:B:601:G97:N1	2.67	0.55
1:A:309:GLN:O	1:A:313:VAL:HG23	2.07	0.55
1:A:479:TYR:O	1:A:479:TYR:CD2	2.60	0.54
1:B:356:LYS:HB3	1:B:357:TYR:CE1	2.41	0.54
1:B:360:LEU:HD13	1:B:533:LEU:HD13	1.89	0.54
1:A:290:THR:O	1:A:290:THR:HG23	2.08	0.54
1:A:332:GLU:HA	1:A:333:PRO:C	2.26	0.54
1:B:319:HIS:CD2	1:B:321:LYS:H	2.25	0.54
1:B:491:LEU:O	1:B:494:LEU:HB3	2.07	0.54
1:B:441:ILE:O	1:B:445:VAL:HG23	2.07	0.54
1:B:388:ARG:HB2	1:B:391:ASN:HD22	1.72	0.54

*Continued on next page...*

*Continued from previous page...*

Atom-1	Atom-2	Interatomic distance (Å)	Clash overlap (Å)
1:A:271:VAL:O	1:A:282:TRP:CE3	2.61	0.54
1:B:355:GLY:HA2	1:B:358:LEU:HB2	1.90	0.54
1:A:384:HIS:HE1	1:A:404:ASP:O	1.90	0.54
1:A:273:LEU:CD1	1:A:281:VAL:HG12	2.37	0.54
1:A:501:LYS:O	1:A:503:PRO:HD3	2.07	0.54
1:B:462:PRO:HB2	1:B:463:TYR:CD1	2.43	0.54
1:B:363:LEU:HD12	1:B:533:LEU:HD21	1.90	0.54
1:A:454:GLU:CA	1:A:457:THR:OG1	2.53	0.53
1:B:493:ASP:O	1:B:497:GLN:HG3	2.08	0.53
1:A:440:THR:OG1	1:A:443:SER:N	2.42	0.53
1:A:470:GLU:O	1:A:474:GLN:CG	2.56	0.53
1:B:363:LEU:CD1	1:B:533:LEU:HD21	2.38	0.53
1:A:308:LEU:O	1:A:312:GLN:HG2	2.09	0.53
1:A:394:VAL:HG12	1:A:395:GLY:N	2.24	0.53
1:A:491:LEU:O	1:A:495:MET:HG3	2.08	0.53
1:B:305:GLU:HA	1:B:305:GLU:OE1	2.09	0.53
1:B:528:GLN:NE2	1:B:529:PRO:HD2	2.24	0.53
1:B:441:ILE:O	1:B:444:ASP:HB2	2.09	0.52
1:B:286:TRP:CZ2	1:B:327:ALA:HB2	2.45	0.52
1:A:257:LYS:HD3	1:A:331:GLU:OE1	2.09	0.52
1:B:282:TRP:CD1	1:B:282:TRP:N	2.78	0.52
1:B:463:TYR:N	1:B:464:PRO:CD	2.72	0.52
1:A:373:GLY:O	1:A:376:TYR:HB3	2.09	0.52
1:A:479:TYR:C	1:A:479:TYR:CD2	2.82	0.52
1:A:279:GLY:O	1:A:280:GLU:HG2	2.10	0.52
1:A:519:TYR:OH	1:A:524:GLU:HG3	2.10	0.52
1:A:260:TRP:CZ3	1:A:326:TYR:O	2.63	0.52
1:B:269:LEU:CD2	1:B:335:TYR:HE1	2.13	0.51
1:A:462:PRO:HB3	1:A:481:MET:CE	2.41	0.51
1:B:497:GLN:O	1:B:500:ARG:CG	2.56	0.51
1:B:476:GLU:HA	1:B:476:GLU:OE1	2.10	0.51
1:B:500:ARG:CD	1:B:505:GLU:HB3	2.40	0.51
1:A:314:MET:CG	1:A:405:PHE:CD2	2.92	0.51
1:B:363:LEU:HD12	1:B:533:LEU:CD2	2.40	0.51
1:B:360:LEU:HA	1:B:363:LEU:HB2	1.92	0.50
1:B:286:TRP:CZ2	1:B:327:ALA:CB	2.95	0.50
1:A:324:GLN:H	1:A:339:GLU:HG2	1.76	0.50
1:A:519:TYR:HE1	1:A:523:THR:HG21	1.67	0.50
1:B:332:GLU:HA	1:B:333:PRO:C	2.31	0.50
1:B:347:LEU:O	1:B:351:LYS:HG2	2.11	0.50
1:B:317:LEU:HD12	1:B:317:LEU:O	2.11	0.49

*Continued on next page...*

*Continued from previous page...*

Atom-1	Atom-2	Interatomic distance (Å)	Clash overlap (Å)
1:A:382:TYR:CZ	1:A:410:LEU:HD13	2.48	0.49
1:B:323:VAL:HG23	1:B:402:VAL:O	2.12	0.49
1:A:482:PRO:O	1:A:484:PRO:HD3	2.12	0.49
1:B:329:VAL:C	1:B:334:ILE:HG23	2.22	0.49
1:A:264:ARG:O	1:A:267:LEU:HD12	2.12	0.49
1:B:397:ASN:O	1:B:398:LEU:HB2	2.13	0.49
1:A:462:PRO:HB3	1:A:481:MET:HE1	1.92	0.49
1:B:446:TRP:CD1	1:B:446:TRP:C	2.85	0.49
1:A:320:GLU:O	1:A:401:LYS:HE2	2.13	0.49
1:A:490:SER:HB2	1:A:519:TYR:OH	2.13	0.49
1:A:360:LEU:HB3	1:A:361:PRO:HD3	1.95	0.48
1:A:470:GLU:O	1:A:474:GLN:HG2	2.12	0.48
1:B:319:HIS:CD2	1:B:373:GLY:HA2	2.48	0.48
1:B:385:ARG:HG2	1:B:439:PHE:CD2	2.47	0.48
1:A:479:TYR:C	1:A:480:ARG:NH1	2.67	0.48
1:B:480:ARG:CG	1:B:480:ARG:NH1	2.76	0.48
1:A:450:ILE:HD13	1:A:499:TRP:CE2	2.48	0.48
1:A:473:ASP:HA	1:A:476:GLU:HB2	1.95	0.48
1:B:325:LEU:HA	1:B:338:MET:HB3	1.96	0.48
1:B:359:ARG:HH11	1:B:359:ARG:CG	2.27	0.48
1:B:399:VAL:O	1:B:400:CYS:SG	2.70	0.48
1:B:440:THR:O	1:B:443:SER:OG	2.15	0.48
1:A:291:ARG:HD2	1:A:340:TYR:CD2	2.48	0.48
1:A:297:LEU:HD23	1:A:307:PHE:CG	2.49	0.48
1:A:359:ARG:O	1:A:363:LEU:HG	2.14	0.48
1:A:384:HIS:O	1:A:444:ASP:CG	2.49	0.48
1:A:431:PRO:HG2	1:A:501:LYS:HE2	1.95	0.48
1:A:440:THR:OG1	1:A:442:LYS:CB	2.60	0.48
1:A:441:ILE:O	1:A:444:ASP:HB2	2.14	0.48
1:A:451:LEU:O	1:A:454:GLU:HG2	2.12	0.48
1:A:433:ALA:HB1	1:A:439:PHE:CE1	2.49	0.48
1:B:485:PRO:O	1:B:486:GLU:HB2	2.14	0.48
1:B:527:TYR:CD2	1:B:527:TYR:C	2.87	0.48
1:A:282:TRP:CD1	1:A:282:TRP:N	2.82	0.48
1:A:527:TYR:CD2	1:A:527:TYR:C	2.87	0.48
1:B:312:GLN:O	1:B:316:LYS:HB2	2.13	0.48
1:B:451:LEU:HA	1:B:454:GLU:HB2	1.96	0.48
1:B:457:THR:O	1:B:458:LYS:HB2	2.14	0.48
1:A:360:LEU:HG	1:A:364:VAL:HG23	1.95	0.47
1:B:271:VAL:HG21	1:B:283:MET:CE	2.44	0.47
1:B:346:LEU:O	1:B:349:PHE:HB3	2.13	0.47

*Continued on next page...*



*Continued from previous page...*

Atom-1	Atom-2	Interatomic distance (Å)	Clash overlap (Å)
1:A:310:GLU:HG3	1:A:405:PHE:CB	2.43	0.47
1:A:264:ARG:CZ	1:A:264:ARG:CB	2.92	0.47
1:A:297:LEU:CD2	1:A:307:PHE:CD1	2.97	0.47
1:B:516:LEU:HA	1:B:519:TYR:HB2	1.96	0.47
1:A:344:GLY:HA2	2:A:601:G97:C4	2.45	0.47
1:B:399:VAL:HG12	1:B:400:CYS:N	2.29	0.47
1:A:364:VAL:O	1:A:367:ALA:HB3	2.15	0.47
1:B:359:ARG:O	1:B:363:LEU:CG	2.59	0.47
1:A:474:GLN:O	1:A:479:TYR:HB3	2.14	0.47
1:B:314:MET:O	1:B:317:LEU:HG	2.14	0.47
1:A:396:GLU:O	1:A:397:ASN:CB	2.62	0.47
1:A:442:LYS:O	1:A:445:VAL:HB	2.14	0.47
1:A:524:GLU:N	1:A:525:PRO:CD	2.76	0.47
1:B:441:ILE:HG23	1:B:442:LYS:N	2.30	0.47
1:A:297:LEU:CD2	1:A:307:PHE:CD2	2.97	0.47
1:B:489[B]:GLU:HA	1:B:492:HIS:HB3	1.96	0.47
1:A:273:LEU:O	2:A:601:G97:HAI	2.14	0.47
1:B:258:ASP:OD1	1:B:260:TRP:N	2.39	0.47
1:B:426:ILE:HD11	1:B:468:ASN:O	2.15	0.46
1:B:484:PRO:O	1:B:487:CYS:HB3	2.15	0.46
1:B:296:THR:HG22	1:B:335:TYR:HA	1.97	0.46
1:B:424:PHE:CB	1:B:425:PRO:CA	2.89	0.46
1:A:313:VAL:HG13	1:A:382:TYR:CE2	2.50	0.46
1:A:387:LEU:O	1:A:388:ARG:HG3	2.14	0.46
1:A:428:TRP:O	1:A:447:SER:OG	2.17	0.46
1:A:297:LEU:HD23	1:A:307:PHE:CD2	2.50	0.46
1:B:404:ASP:OD1	1:B:404:ASP:N	2.47	0.46
1:B:441:ILE:HG23	1:B:442:LYS:HD3	1.98	0.46
1:A:480:ARG:CA	1:A:480:ARG:HH11	2.28	0.46
1:A:293:ALA:HB3	1:A:338:MET:CE	2.45	0.46
1:B:482:PRO:O	1:B:484:PRO:CD	2.64	0.46
1:A:279:GLY:CA	1:A:297:LEU:HA	2.37	0.46
1:A:473:ASP:O	1:A:477:ARG:HB2	2.16	0.46
1:A:523:THR:HG22	1:A:524:GLU:HG2	1.97	0.46
1:B:359:ARG:H	1:B:362:GLN:HE21	1.63	0.46
1:B:441:ILE:HG13	1:B:509:PHE:HE2	1.80	0.46
1:B:290:THR:HG22	1:B:291:ARG:O	2.16	0.46
1:B:296:THR:O	1:B:297:LEU:C	2.54	0.46
1:A:509:PHE:O	1:A:513:GLN:HB3	2.16	0.45
1:B:268:ARG:O	1:B:284:GLY:HA3	2.15	0.45
1:B:319:HIS:CD2	1:B:321:LYS:HB2	2.51	0.45

*Continued on next page...*

*Continued from previous page...*

Atom-1	Atom-2	Interatomic distance (Å)	Clash overlap (Å)
1:B:297:LEU:HD12	1:B:334:ILE:N	2.31	0.45
1:A:266:SER:OG	1:A:287:ASN:HA	2.16	0.45
1:A:297:LEU:CD2	1:A:307:PHE:CB	2.94	0.45
1:A:442:LYS:HD2	1:A:503:PRO:O	2.16	0.45
1:B:290:THR:HG22	1:B:291:ARG:N	2.31	0.45
1:A:452:LEU:O	1:A:456:THR:OG1	2.31	0.45
1:A:344:GLY:HA2	2:A:601:G97:C5	2.46	0.45
1:B:480:ARG:HD3	1:B:499:TRP:HB3	1.97	0.45
1:B:491:LEU:CD1	1:B:494:LEU:HD23	2.47	0.45
1:B:445:VAL:HG22	1:B:509:PHE:CZ	2.52	0.45
1:A:311:ALA:HB1	1:A:325:LEU:HD21	1.99	0.45
1:A:271:VAL:CG1	1:A:272:LYS:N	2.80	0.45
1:A:296:THR:OG1	1:A:297:LEU:N	2.48	0.45
1:B:433:ALA:HB1	1:B:439:PHE:CZ	2.51	0.45
1:A:271:VAL:O	1:A:282:TRP:HE3	1.99	0.45
1:B:360:LEU:O	1:B:364:VAL:N	2.50	0.45
1:B:378:GLU:HG3	1:B:441:ILE:CG1	2.46	0.45
1:B:350:LEU:HD21	1:B:455:LEU:HD23	1.98	0.44
1:B:396:GLU:O	1:B:397:ASN:CB	2.63	0.44
1:B:297:LEU:CD1	1:B:334:ILE:O	2.63	0.44
1:B:384:HIS:CD2	1:B:384:HIS:C	2.88	0.44
1:A:432:GLU:CD	1:A:432:GLU:H	2.19	0.44
1:A:440:THR:OG1	1:A:442:LYS:N	2.49	0.44
1:B:307:PHE:O	1:B:307:PHE:CD2	2.71	0.44
1:A:297:LEU:HD22	1:A:307:PHE:HB2	1.99	0.44
1:B:366:MET:O	1:B:367:ALA:C	2.54	0.44
1:B:389:ALA:HB2	1:B:454:GLU:OE2	2.17	0.44
1:A:297:LEU:CD2	1:A:307:PHE:HB2	2.48	0.44
1:A:264:ARG:HG3	1:A:264:ARG:HH11	1.82	0.44
1:A:501:LYS:HD3	1:A:501:LYS:HA	1.55	0.44
1:B:429:THR:HG22	1:B:434:ALA:HB2	1.98	0.44
1:B:483:CYS:HA	1:B:484:PRO:HD2	1.85	0.43
1:A:296:THR:HB	1:A:335:TYR:CD2	2.51	0.43
1:A:334:ILE:O	1:A:335:TYR:HD2	1.90	0.43
1:A:460:ARG:HD2	1:A:460:ARG:HA	1.63	0.43
1:A:375:ALA:HA	1:A:509:PHE:HB2	1.99	0.43
1:B:527:TYR:HE2	1:B:529:PRO:HG3	1.82	0.43
1:A:369:GLN:O	1:A:372:SER:HB3	2.19	0.43
1:B:262:ILE:HD12	1:B:267:LEU:CD2	2.48	0.43
1:B:375:ALA:HA	1:B:509:PHE:HB2	2.00	0.43
1:A:286:TRP:CD1	1:A:287:ASN:N	2.87	0.43

*Continued on next page...*

*Continued from previous page...*

Atom-1	Atom-2	Interatomic distance (Å)	Clash overlap (Å)
1:A:362:GLN:N	1:A:362:GLN:OE1	2.50	0.43
1:B:379:ARG:CG	1:B:379:ARG:HH11	2.24	0.43
1:A:325:LEU:HD12	1:A:326:TYR:N	2.28	0.43
1:A:508:THR:OG1	1:A:509:PHE:N	2.51	0.43
1:B:294:ILE:HG23	1:B:336:ILE:O	2.18	0.43
1:B:360:LEU:O	1:B:364:VAL:HG23	2.17	0.43
1:A:286:TRP:CG	1:A:287:ASN:HB2	2.53	0.43
1:B:388:ARG:HG2	1:B:428:TRP:CD1	2.54	0.43
1:B:264:ARG:HH12	1:B:335:TYR:HD2	1.66	0.43
1:B:457:THR:O	1:B:458:LYS:CB	2.67	0.43
1:A:480:ARG:HA	1:A:480:ARG:HH11	1.84	0.43
1:A:446:TRP:CZ3	1:A:499:TRP:O	2.71	0.43
1:B:275:GLN:CG	1:B:276:GLY:H	2.30	0.43
1:B:295:LYS:HZ3	1:B:295:LYS:HB2	1.83	0.43
1:B:281:VAL:HG22	1:B:295:LYS:HG3	2.00	0.43
1:B:371:ALA:O	1:B:375:ALA:N	2.51	0.43
1:B:262:ILE:HD11	1:B:267:LEU:HD22	1.97	0.42
1:B:349:PHE:CE1	1:B:394:VAL:HG11	2.54	0.42
1:B:389:ALA:N	1:B:454:GLU:OE2	2.48	0.42
1:A:264:ARG:CG	1:A:264:ARG:HH11	2.31	0.42
1:A:495:MET:O	1:A:498:CYS:CB	2.54	0.42
1:B:433:ALA:HB1	1:B:439:PHE:CE2	2.53	0.42
1:B:378:GLU:HG3	1:B:441:ILE:CD1	2.49	0.42
1:B:327:ALA:HB3	1:B:337:VAL:HG11	2.01	0.42
1:B:388:ARG:O	1:B:392:ILE:HG12	2.19	0.42
1:A:265:GLU:CG	1:A:266:SER:N	2.82	0.42
1:B:479:TYR:CD2	1:B:479:TYR:C	2.93	0.42
1:A:432:GLU:OE1	1:A:432:GLU:N	2.37	0.42
1:A:360:LEU:O	1:A:364:VAL:HG23	2.19	0.42
1:A:472:LEU:O	1:A:476:GLU:HG2	2.20	0.42
1:A:528:GLN:CG	1:A:529:PRO:HD2	2.50	0.42
1:B:312:GLN:O	1:B:316:LYS:N	2.42	0.42
1:B:505:GLU:OE2	1:B:505:GLU:CA	2.67	0.42
1:A:334:ILE:C	1:A:335:TYR:CD2	2.89	0.42
1:B:379:ARG:HG3	1:B:379:ARG:NH1	2.28	0.42
1:B:262:ILE:H	1:B:262:ILE:HG13	1.75	0.42
1:A:519:TYR:CE1	1:A:523:THR:HG22	2.52	0.41
1:B:297:LEU:N	1:B:297:LEU:HD13	2.35	0.41
1:B:283:MET:CG	1:B:284:GLY:N	2.83	0.41
1:B:297:LEU:HD11	1:B:333:PRO:HB3	2.01	0.41
1:A:286:TRP:HB2	1:A:292:VAL:HG21	2.02	0.41

*Continued on next page...*

Continued from previous page...

Atom-1	Atom-2	Interatomic distance (Å)	Clash overlap (Å)
1:A:402:VAL:HG12	1:A:403:ALA:N	2.35	0.41
1:A:479:TYR:O	1:A:479:TYR:HD2	2.03	0.41
1:A:283:MET:HG3	1:A:340:TYR:CD1	2.52	0.41
1:A:286:TRP:CG	1:A:287:ASN:N	2.88	0.41
1:B:366:MET:HE3	1:B:366:MET:HB3	1.64	0.41
1:B:495:MET:O	1:B:498:CYS:N	2.53	0.41
1:A:426:ILE:HA	1:A:429:THR:OG1	2.20	0.41
1:A:273:LEU:N	1:A:281:VAL:O	2.42	0.41
1:A:328:VAL:HG23	1:A:335:TYR:O	2.19	0.41
1:A:509:PHE:O	1:A:513:GLN:CB	2.69	0.41
1:A:360:LEU:HG	1:A:364:VAL:CG2	2.50	0.41
1:A:388:ARG:HG2	1:A:428:TRP:CG	2.56	0.41
1:A:277:CYS:CB	1:A:278:PHE:CE2	3.04	0.41
1:A:325:LEU:HA	1:A:338:MET:HB3	2.02	0.41
1:A:453:THR:O	1:A:456:THR:OG1	2.39	0.41
1:B:286:TRP:O	1:B:287:ASN:HB2	2.20	0.41
1:A:286:TRP:CD1	1:A:287:ASN:HB2	2.56	0.40
1:B:365:ASP:O	1:B:368:ALA:HB3	2.21	0.40
1:B:428:TRP:HE1	1:B:454:GLU:CD	2.15	0.40
1:A:481:MET:HB3	1:A:482:PRO:HD2	2.02	0.40
1:A:488:PRO:C	1:A:490:SER:N	2.71	0.40
1:A:376:TYR:O	1:A:379:ARG:HB2	2.21	0.40
1:B:327:ALA:H	1:B:337:VAL:CB	2.30	0.40
1:B:440:THR:CG2	1:B:441:ILE:N	2.84	0.40
1:B:319:HIS:HB3	1:B:322:LEU:HB2	2.04	0.40
1:A:450:ILE:HD13	1:A:499:TRP:HZ2	1.79	0.40

All (1) symmetry-related close contacts are listed below. The label for Atom-2 includes the symmetry operator and encoded unit-cell translations to be applied.

Atom-1	Atom-2	Interatomic distance (Å)	Clash overlap (Å)
1:B:397:ASN:OD1	1:B:438:ARG:CG[1_655]	2.15	0.05

## 5.3 Torsion angles [i](#)

### 5.3.1 Protein backbone [i](#)

In the following table, the Percentiles column shows the percent Ramachandran outliers of the chain as a percentile score with respect to all X-ray entries followed by that with respect to entries of similar resolution.

The Analysed column shows the number of residues for which the backbone conformation was analysed, and the total number of residues.

Mol	Chain	Analysed	Favoured	Allowed	Outliers	Percentiles	
1	A	255/286 (89%)	236 (92%)	18 (7%)	1 (0%)	34	72
1	B	249/286 (87%)	226 (91%)	23 (9%)	0	100	100
All	All	504/572 (88%)	462 (92%)	41 (8%)	1 (0%)	47	82

All (1) Ramachandran outliers are listed below:

Mol	Chain	Res	Type
1	A	278	PHE

### 5.3.2 Protein sidechains [i](#)

In the following table, the Percentiles column shows the percent sidechain outliers of the chain as a percentile score with respect to all X-ray entries followed by that with respect to entries of similar resolution.

The Analysed column shows the number of residues for which the sidechain conformation was analysed, and the total number of residues.

Mol	Chain	Analysed	Rotameric	Outliers	Percentiles	
1	A	222/245 (91%)	168 (76%)	54 (24%)	0	3
1	B	211/245 (86%)	163 (77%)	48 (23%)	1	4
All	All	433/490 (88%)	331 (76%)	102 (24%)	1	3

All (102) residues with a non-rotameric sidechain are listed below:

Mol	Chain	Res	Type
1	A	261	GLU
1	A	262	ILE
1	A	264	ARG
1	A	267	LEU
1	A	268	ARG
1	A	269	LEU
1	A	273	LEU
1	A	278	PHE
1	A	283	MET
1	A	285	THR
1	A	296	THR
1	A	297	LEU

*Continued on next page...*

*Continued from previous page...*

<b>Mol</b>	<b>Chain</b>	<b>Res</b>	<b>Type</b>
1	A	303	SER
1	A	305	GLU
1	A	309	GLN
1	A	314	MET
1	A	322	LEU
1	A	325	LEU
1	A	328	VAL
1	A	330	SER
1	A	332	GLU
1	A	338	MET
1	A	342	SER
1	A	362	GLN
1	A	378	GLU
1	A	380	MET
1	A	384	HIS
1	A	385	ARG
1	A	393	LEU
1	A	398	LEU
1	A	404	ASP
1	A	407	LEU
1	A	410	LEU
1	A	426	ILE
1	A	429	THR
1	A	451	LEU
1	A	454	GLU
1	A	456	THR
1	A	457	THR
1	A	466	MET
1	A	469	ARG
1	A	472	LEU
1	A	475	VAL
1	A	477	ARG
1	A	479	TYR
1	A	480	ARG
1	A	501	LYS
1	A	510	GLU
1	A	521	THR
1	A	522	SER
1	A	526[A]	GLN
1	A	526[B]	GLN
1	A	527	TYR
1	A	531	GLU

*Continued on next page...*

*Continued from previous page...*

<b>Mol</b>	<b>Chain</b>	<b>Res</b>	<b>Type</b>
1	B	260	TRP
1	B	262	ILE
1	B	265	GLU
1	B	266	SER
1	B	267	LEU
1	B	282	TRP
1	B	289	THR
1	B	291	ARG
1	B	294	ILE
1	B	295	LYS
1	B	297	LEU
1	B	316	LYS
1	B	318	ARG
1	B	322	LEU
1	B	328	VAL
1	B	332	GLU
1	B	334	ILE
1	B	337	VAL
1	B	338	MET
1	B	339	GLU
1	B	341	MET
1	B	342	SER
1	B	348	ASP
1	B	356	LYS
1	B	359	ARG
1	B	379	ARG
1	B	380	MET
1	B	385	ARG
1	B	387	LEU
1	B	404	ASP
1	B	407	LEU
1	B	428	TRP
1	B	442	LYS
1	B	450	ILE
1	B	456	THR
1	B	457	THR
1	B	472	LEU
1	B	473	ASP
1	B	480	ARG
1	B	488	PRO
1	B	490	SER
1	B	501[A]	LYS

*Continued on next page...*

*Continued from previous page...*

Mol	Chain	Res	Type
1	B	501[B]	LYS
1	B	505	GLU
1	B	516	LEU
1	B	521	THR
1	B	528	GLN
1	B	533	LEU

Some sidechains can be flipped to improve hydrogen bonding and reduce clashes. All (9) such sidechains are listed below:

Mol	Chain	Res	Type
1	A	319	HIS
1	A	513	GLN
1	B	309	GLN
1	B	319	HIS
1	B	362	GLN
1	B	384	HIS
1	B	391	ASN
1	B	526	GLN
1	B	528	GLN

### 5.3.3 RNA [i](#)

There are no RNA molecules in this entry.

### 5.4 Non-standard residues in protein, DNA, RNA chains [i](#)

There are no non-standard protein/DNA/RNA residues in this entry.

### 5.5 Carbohydrates [i](#)

There are no carbohydrates in this entry.

### 5.6 Ligand geometry [i](#)

2 ligands are modelled in this entry.

In the following table, the Counts columns list the number of bonds (or angles) for which Mogul statistics could be retrieved, the number of bonds (or angles) that are observed in the model and the number of bonds (or angles) that are defined in the Chemical Component Dictionary. The



Link column lists molecule types, if any, to which the group is linked. The Z score for a bond length (or angle) is the number of standard deviations the observed value is removed from the expected value. A bond length (or angle) with  $|Z| > 2$  is considered an outlier worth inspection. RMSZ is the root-mean-square of all Z scores of the bond lengths (or angles).

Mol	Type	Chain	Res	Link	Bond lengths			Bond angles		
					Counts	RMSZ	# Z  > 2	Counts	RMSZ	# Z  > 2
2	G97	A	601	-	29,30,30	1.71	7 (24%)	36,41,41	2.45	10 (27%)
2	G97	B	601	-	29,30,30	1.79	7 (24%)	36,41,41	2.32	12 (33%)

In the following table, the Chirals column lists the number of chiral outliers, the number of chiral centers analysed, the number of these observed in the model and the number defined in the Chemical Component Dictionary. Similar counts are reported in the Torsion and Rings columns. '-' means no outliers of that kind were identified.

Mol	Type	Chain	Res	Link	Chirals	Torsions	Rings
2	G97	A	601	-	-	4/12/14/14	0/4/4/4
2	G97	B	601	-	-	0/12/14/14	0/4/4/4

All (14) bond length outliers are listed below:

Mol	Chain	Res	Type	Atoms	Z	Observed(Å)	Ideal(Å)
2	A	601	G97	C6-C5	4.69	1.50	1.44
2	B	601	G97	CAM-C4	-4.30	1.35	1.41
2	B	601	G97	C4-N3	-3.81	1.31	1.37
2	B	601	G97	C6-N1	3.79	1.37	1.32
2	B	601	G97	C6-C5	3.75	1.49	1.44
2	A	601	G97	C5-C4	3.67	1.48	1.42
2	A	601	G97	CAU-NAQ	-3.19	1.35	1.41
2	A	601	G97	CAM-C4	-3.17	1.36	1.41
2	B	601	G97	C5-C4	2.81	1.47	1.42
2	A	601	G97	CAL-CAK	2.61	1.42	1.36
2	B	601	G97	CAL-CAK	2.41	1.41	1.36
2	B	601	G97	CAU-NAQ	-2.40	1.36	1.41
2	A	601	G97	C4-N3	-2.32	1.33	1.37
2	A	601	G97	C6-N1	2.22	1.35	1.32

All (22) bond angle outliers are listed below:

Mol	Chain	Res	Type	Atoms	Z	Observed(°)	Ideal(°)
2	B	601	G97	C2-N3-C4	7.99	121.92	116.50
2	A	601	G97	C2-N3-C4	6.75	121.08	116.50
2	A	601	G97	N3-C2-N1	-6.69	120.85	126.11
2	A	601	G97	C5-C6-NAR	6.07	126.41	119.73

*Continued on next page...*

Continued from previous page...

Mol	Chain	Res	Type	Atoms	Z	Observed(°)	Ideal(°)
2	B	601	G97	N3-C2-N1	-5.48	121.80	126.11
2	B	601	G97	CAW-C2-N1	4.21	124.43	117.33
2	A	601	G97	CAM-CAU-NAQ	-3.75	110.64	123.13
2	A	601	G97	C5-C6-N1	-3.48	116.26	121.98
2	A	601	G97	CAL-C5-C6	3.29	128.57	124.06
2	B	601	G97	CAM-CAU-NAQ	-3.22	112.39	123.13
2	B	601	G97	CAV-NAR-C6	-3.08	118.94	128.61
2	A	601	G97	CAV-NAR-C6	-3.02	119.12	128.61
2	B	601	G97	C5-C6-N1	-2.90	117.23	121.98
2	A	601	G97	CAW-C2-N1	2.64	121.78	117.33
2	A	601	G97	CAK-CAU-NAQ	2.60	129.15	120.40
2	B	601	G97	CAG-NAS-NAN	2.29	112.91	107.97
2	B	601	G97	NAR-C6-N1	2.23	120.75	118.66
2	B	601	G97	CAJ-CAG-NAS	-2.16	105.90	111.33
2	B	601	G97	CAI-CAW-C2	-2.11	117.20	120.79
2	A	601	G97	CAJ-CAG-NAS	-2.09	106.07	111.33
2	B	601	G97	C5-C6-NAR	2.07	122.01	119.73
2	B	601	G97	CAK-CAU-NAQ	2.05	127.29	120.40

There are no chirality outliers.

All (4) torsion outliers are listed below:

Mol	Chain	Res	Type	Atoms
2	A	601	G97	N1-C2-CAW-CAH
2	A	601	G97	N1-C2-CAW-CAI
2	A	601	G97	N3-C2-CAW-CAH
2	A	601	G97	N3-C2-CAW-CAI

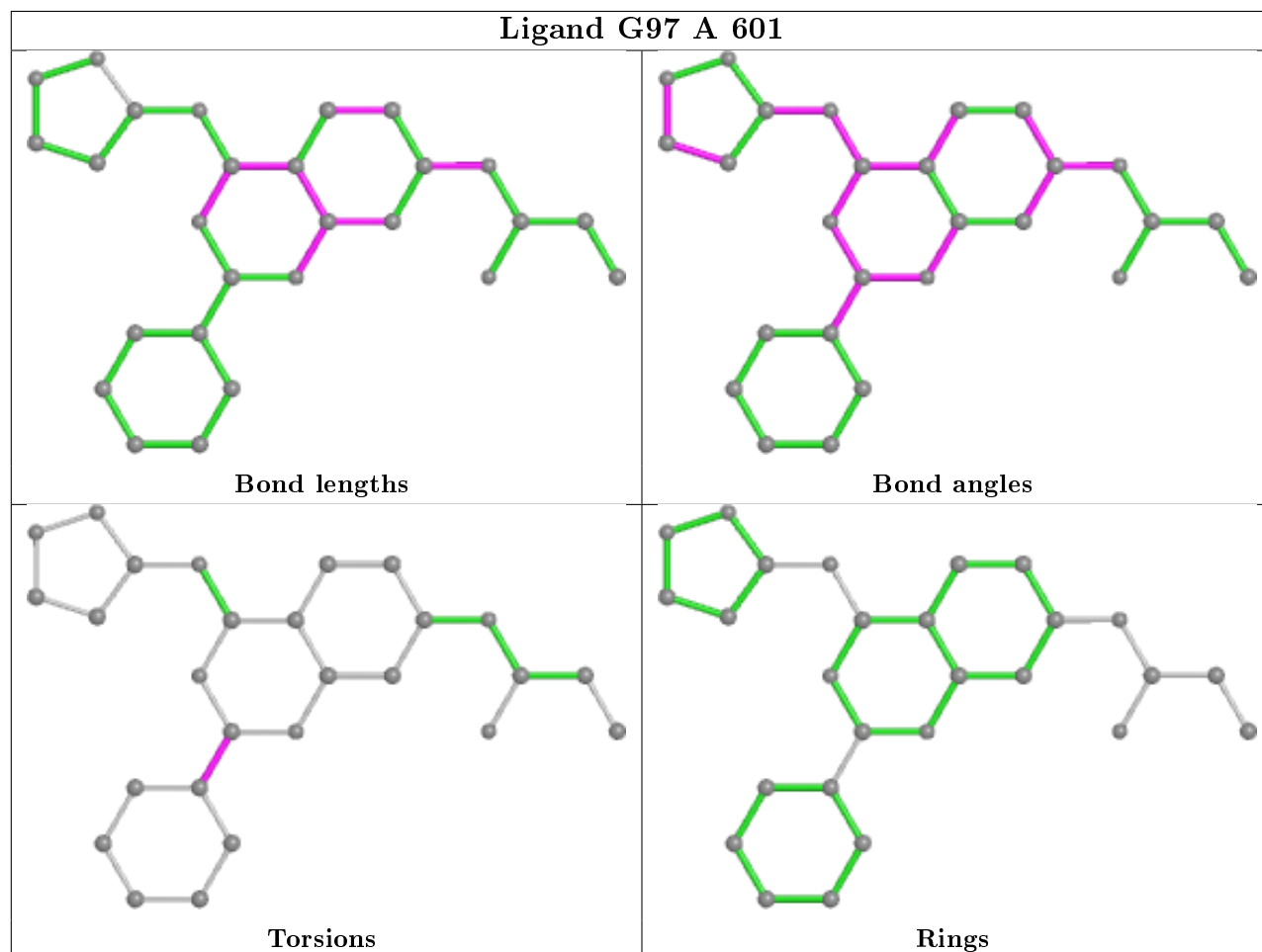
There are no ring outliers.

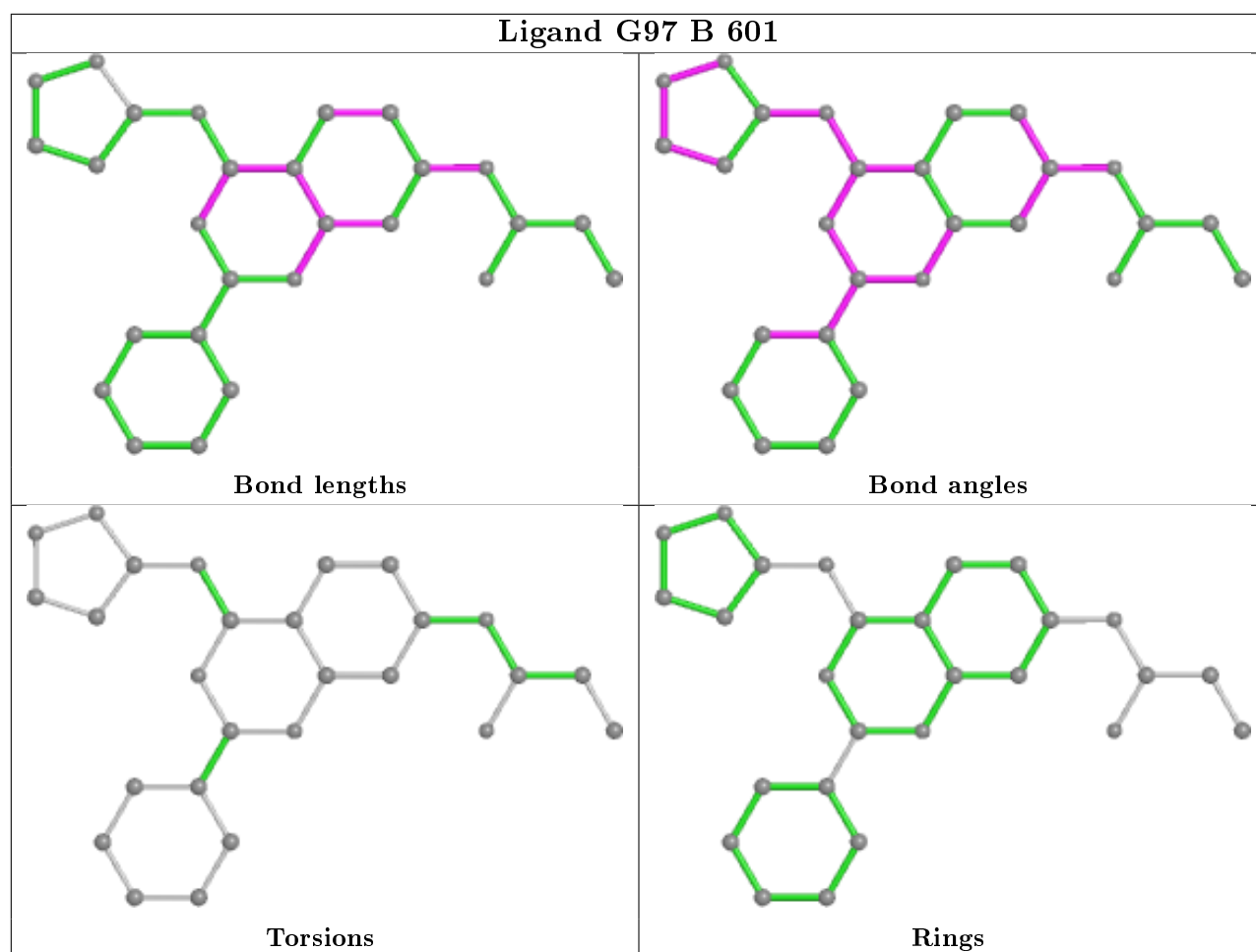
2 monomers are involved in 9 short contacts:

Mol	Chain	Res	Type	Clashes	Symm-Clashes
2	A	601	G97	7	0
2	B	601	G97	2	0

The following is a two-dimensional graphical depiction of Mogul quality analysis of bond lengths, bond angles, torsion angles, and ring geometry for all instances of the Ligand of Interest. In addition, ligands with molecular weight > 250 and outliers as shown on the validation Tables will also be included. For torsion angles, if less than 5% of the Mogul distribution of torsion angles is within 10 degrees of the torsion angle in question, then that torsion angle is considered an outlier. Any bond that is central to one or more torsion angles identified as an outlier by Mogul will be highlighted in the graph. For rings, the root-mean-square deviation (RMSD) between the ring

in question and similar rings identified by Mogul is calculated over all ring torsion angles. If the average RMSD is greater than 60 degrees and the minimal RMSD between the ring in question and any Mogul-identified rings is also greater than 60 degrees, then that ring is considered an outlier. The outliers are highlighted in purple. The color gray indicates Mogul did not find sufficient equivalents in the CSD to analyse the geometry.





## 5.7 Other polymers [i](#)

There are no such residues in this entry.

## 5.8 Polymer linkage issues [i](#)

There are no chain breaks in this entry.

## 6 Fit of model and data [i](#)

### 6.1 Protein, DNA and RNA chains [i](#)

In the following table, the column labelled ‘#RSRZ> 2’ contains the number (and percentage) of RSRZ outliers, followed by percent RSRZ outliers for the chain as percentile scores relative to all X-ray entries and entries of similar resolution. The OWAB column contains the minimum, median, 95<sup>th</sup> percentile and maximum values of the occupancy-weighted average B-factor per residue. The column labelled ‘Q< 0.9’ lists the number of (and percentage) of residues with an average occupancy less than 0.9.

Mol	Chain	Analysed	<RSRZ>	#RSRZ>2	OWAB(Å <sup>2</sup> )	Q<0.9
1	A	260/286 (90%)	-0.02	7 (2%) 54 26	13, 30, 63, 76	0
1	B	253/286 (88%)	-0.03	4 (1%) 72 44	12, 32, 62, 76	0
All	All	513/572 (89%)	-0.03	11 (2%) 63 34	12, 31, 62, 76	0

All (11) RSRZ outliers are listed below:

Mol	Chain	Res	Type	RSRZ
1	B	311	ALA	5.6
1	B	404	ASP	2.9
1	A	278	PHE	2.8
1	B	309	GLN	2.6
1	A	304	PRO	2.4
1	A	280	GLU	2.3
1	A	265	GLU	2.3
1	A	284	GLY	2.3
1	B	277	CYS	2.2
1	A	270	GLU	2.1
1	A	282	TRP	2.1

### 6.2 Non-standard residues in protein, DNA, RNA chains [i](#)

There are no non-standard protein/DNA/RNA residues in this entry.

### 6.3 Carbohydrates [i](#)

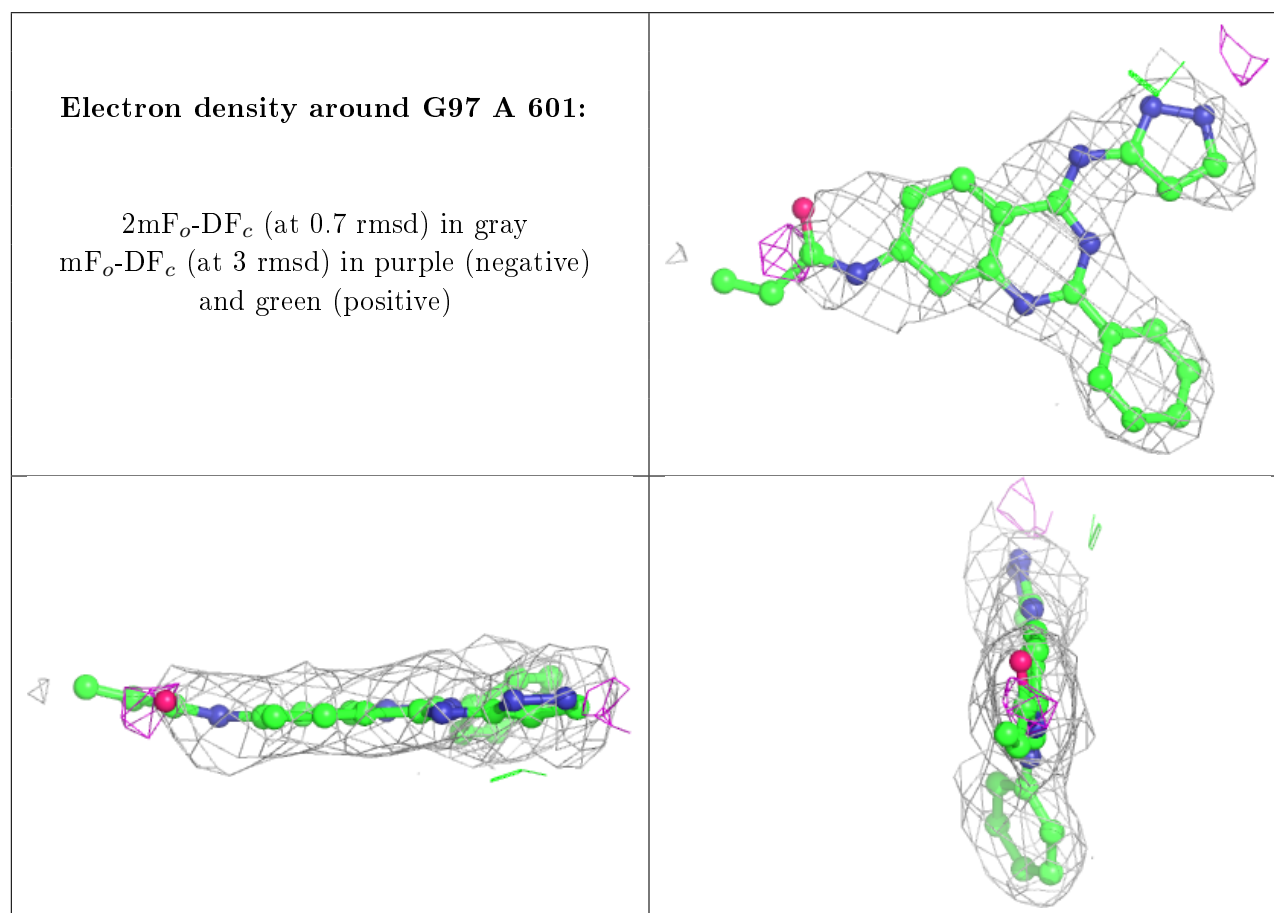
There are no carbohydrates in this entry.

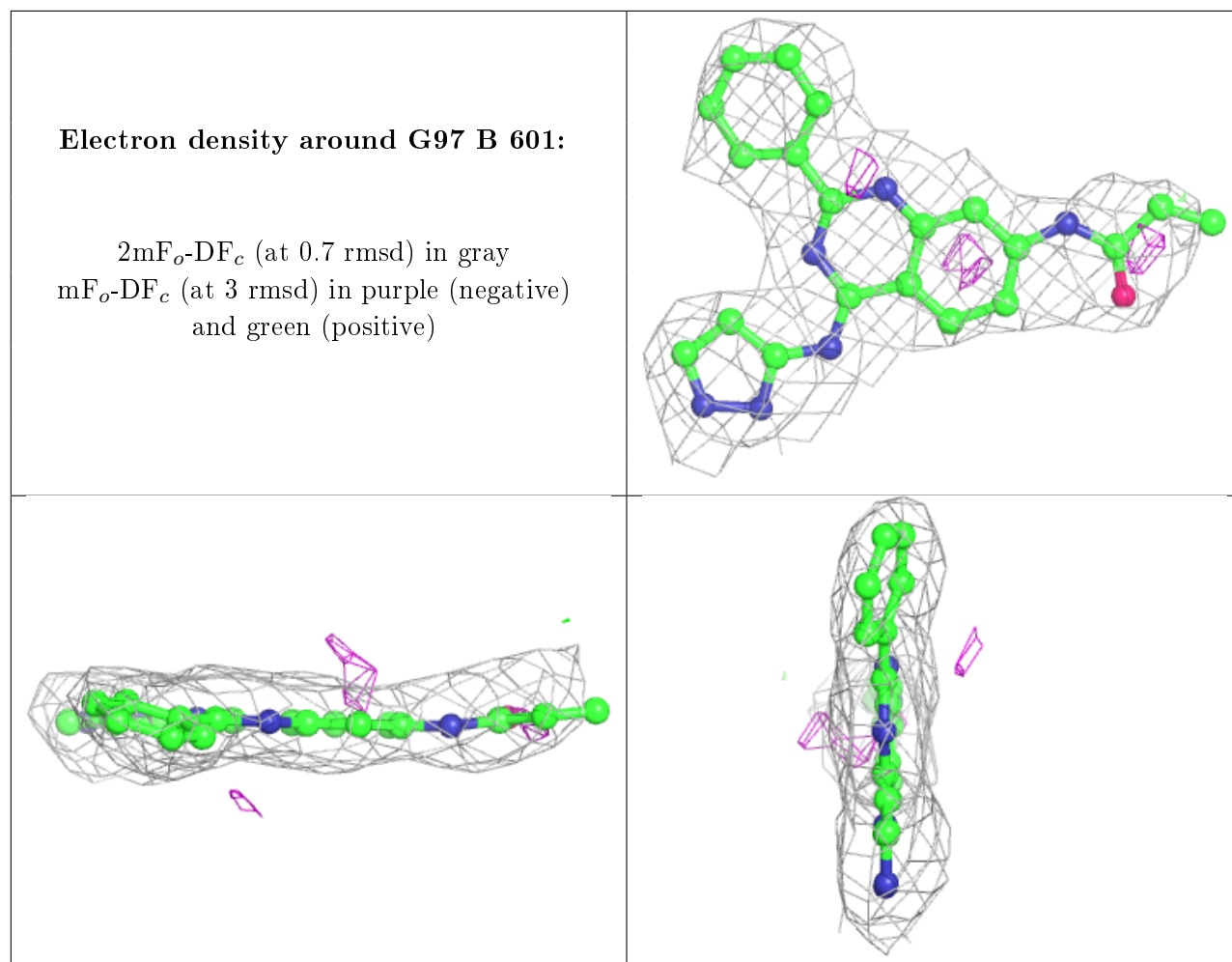
## 6.4 Ligands [i](#)

In the following table, the Atoms column lists the number of modelled atoms in the group and the number defined in the chemical component dictionary. The B-factors column lists the minimum, median, 95<sup>th</sup> percentile and maximum values of B factors of atoms in the group. The column labelled 'Q<0.9' lists the number of atoms with occupancy less than 0.9.

Mol	Type	Chain	Res	Atoms	RSCC	RSR	B-factors(Å <sup>2</sup> )	Q<0.9
2	G97	A	601	27/27	0.86	0.27	29,33,42,43	0
2	G97	B	601	27/27	0.93	0.21	10,10,13,13	0

The following is a graphical depiction of the model fit to experimental electron density of all instances of the Ligand of Interest. In addition, ligands with molecular weight > 250 and outliers as shown on the geometry validation Tables will also be included. Each fit is shown from different orientation to approximate a three-dimensional view.





## 6.5 Other polymers [i](#)

There are no such residues in this entry.