



# Full wwPDB X-ray Structure Validation Report ⓘ

May 13, 2020 – 07:46 am BST

PDB ID : 1D15  
Title : TERNARY INTERACTIONS OF SPERMINE WITH DNA: 4'-EPIADRIAMYCIN AND OTHER DNA: ANTHRACYCLINE COMPLEXES  
Authors : Williams, L.D.; Frederick, C.A.; Ughetto, G.; Rich, A.  
Deposited on : 1990-07-03  
Resolution : 1.50 Å(reported)

This is a Full wwPDB X-ray Structure Validation Report for a publicly released PDB entry.

We welcome your comments at [validation@mail.wwpdb.org](mailto:validation@mail.wwpdb.org)

A user guide is available at

<https://www.wwpdb.org/validation/2017/XrayValidationReportHelp>

with specific help available everywhere you see the ⓘ symbol.

---

The following versions of software and data (see [references ⓘ](#)) were used in the production of this report:

MolProbity : 4.02b-467  
Mogul : 1.8.5 (274361), CSD as541be (2020)  
Xtrriage (Phenix) : **NOT EXECUTED**  
EDS : **NOT EXECUTED**  
buster-report : 1.1.7 (2018)  
Percentile statistics : 20191225.v01 (using entries in the PDB archive December 25th 2019)  
Ideal geometry (proteins) : Engh & Huber (2001)  
Ideal geometry (DNA, RNA) : Parkinson et al. (1996)  
Validation Pipeline (wwPDB-VP) : 2.11

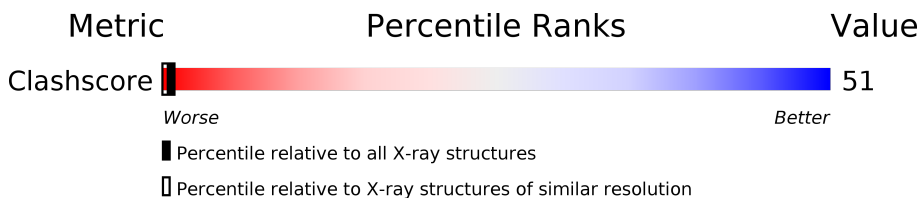
# 1 Overall quality at a glance

The following experimental techniques were used to determine the structure:

*X-RAY DIFFRACTION*

The reported resolution of this entry is 1.50 Å.


Percentile scores (ranging between 0-100) for global validation metrics of the entry are shown in the following graphic. The table shows the number of entries on which the scores are based.



Metric	Whole archive (#Entries)	Similar resolution (#Entries, resolution range(Å))
Clashscore	141614	3144 (1.50-1.50)

The table below summarises the geometric issues observed across the polymeric chains and their fit to the electron density. The red, orange, yellow and green segments on the lower bar indicate the fraction of residues that contain outliers for  $\geq 3$ , 2, 1 and 0 types of geometric quality criteria respectively. A grey segment represents the fraction of residues that are not modelled. The numeric value for each fraction is indicated below the corresponding segment, with a dot representing fractions  $\leq 5\%$

Note EDS was not executed.

Mol	Chain	Length	Quality of chain
1	A	6	

The following table lists non-polymeric compounds, carbohydrate monomers and non-standard residues in protein, DNA, RNA chains that are outliers for geometric or electron-density-fit criteria:

Mol	Type	Chain	Res	Chirality	Geometry	Clashes	Electron density
3	SPM	A	8	-	-	X	-

## 2 Entry composition [i](#)

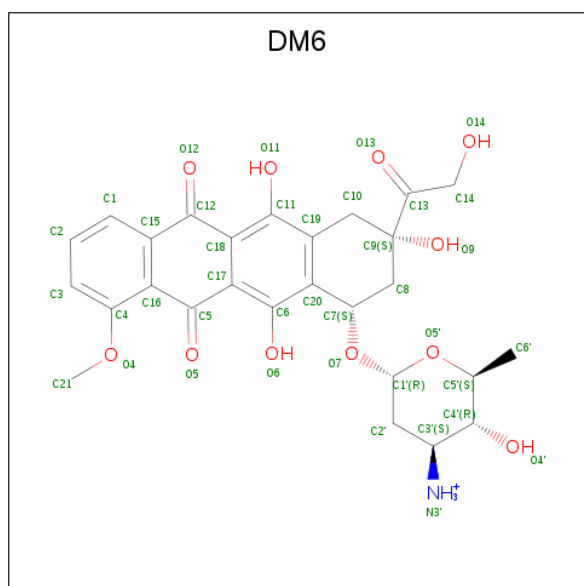
There are 4 unique types of molecules in this entry. The entry contains 211 atoms, of which 0 are hydrogens and 0 are deuteriums.

In the tables below, the ZeroOcc column contains the number of atoms modelled with zero occupancy, the AltConf column contains the number of residues with at least one atom in alternate conformation and the Trace column contains the number of residues modelled with at most 2 atoms.

- Molecule 1 is a DNA chain called DNA (5'-D(\*CP\*GP\*AP\*TP\*CP\*G)-3').

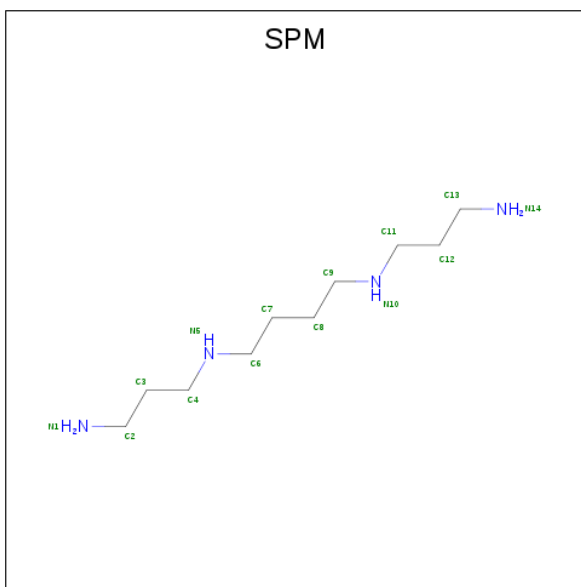
Mol	Chain	Residues	Atoms					ZeroOcc	AltConf	Trace
			Total	C	N	O	P			
1	A	6	120	58	23	34	5	0	0	0

- Molecule 2 is 4'-EPIDOXORUBICIN (three-letter code: DM6) (formula: C<sub>27</sub>H<sub>30</sub>NO<sub>11</sub>).



Mol	Chain	Residues	Atoms				ZeroOcc	AltConf
			Total	C	N	O		
2	A	1	39	27	1	11	0	0

- Molecule 3 is SPERMINE (three-letter code: SPM) (formula: C<sub>10</sub>H<sub>26</sub>N<sub>4</sub>).



Mol	Chain	Residues	Atoms		ZeroOcc	AltConf
3	A	1	Total	C N	0	0
			14	10 4		

- Molecule 4 is water.

Mol	Chain	Residues	Atoms		ZeroOcc	AltConf
4	A	38	Total	O	0	0
			38	38		

### 3 Residue-property plots [i](#)

These plots are drawn for all protein, RNA and DNA chains in the entry. The first graphic for a chain summarises the proportions of the various outlier classes displayed in the second graphic. The second graphic shows the sequence view annotated by issues in geometry. Residues are color-coded according to the number of geometric quality criteria for which they contain at least one outlier: green = 0, yellow = 1, orange = 2 and red = 3 or more. Stretches of 2 or more consecutive residues without any outlier are shown as a green connector. Residues present in the sample, but not in the model, are shown in grey.

Note EDS was not executed.

- Molecule 1: DNA (5'-D(\*CP\*GP\*AP\*TP\*CP\*G)-3')

Chain A: 



## 4 Data and refinement statistics

Xtriage (Phenix) and EDS were not executed - this section is therefore incomplete.

Property	Value
Space group	P 41 21 2
Cell constants a, b, c, $\alpha$ , $\beta$ , $\gamma$	28.04Å 28.04Å 53.15Å 90.00° 90.00° 90.00°
Resolution (Å)	10.00 – 1.50
% Data completeness (in resolution range)	(Not available) (10.00-1.50)
$R_{merge}$	(Not available)
$R_{sym}$	(Not available)
Refinement program	PROLSQ (MODIFIED BY G.J.QUIGLEY), MODIFIED BY G.J.QUIGLEY
R, $R_{free}$	0.196 , (Not available)
Estimated twinning fraction	No twinning to report.
Total number of atoms	211
Average B, all atoms (Å <sup>2</sup> )	18.0

## 5 Model quality i

### 5.1 Standard geometry i

Bond lengths and bond angles in the following residue types are not validated in this section: SPM, DM6

The Z score for a bond length (or angle) is the number of standard deviations the observed value is removed from the expected value. A bond length (or angle) with  $|Z| > 5$  is considered an outlier worth inspection. RMSZ is the root-mean-square of all Z scores of the bond lengths (or angles).

Mol	Chain	Bond lengths		Bond angles	
		RMSZ	# Z  >5	RMSZ	# Z  >5
1	A	3.93	22/134 (16.4%)	5.01	40/205 (19.5%)

All (22) bond length outliers are listed below:

Mol	Chain	Res	Type	Atoms	Z	Observed(Å)	Ideal(Å)
1	A	2	DG	C2-N2	-12.11	1.22	1.34
1	A	1	DC	C4'-C3'	10.40	1.63	1.53
1	A	2	DG	C6-N1	-10.10	1.32	1.39
1	A	6	DG	C6-N1	-9.97	1.32	1.39
1	A	6	DG	C2-N2	-9.83	1.24	1.34
1	A	2	DG	C2'-C1'	9.81	1.62	1.52
1	A	1	DC	C2'-C1'	9.24	1.61	1.52
1	A	6	DG	C2'-C1'	8.30	1.60	1.52
1	A	5	DC	C2'-C1'	8.15	1.60	1.52
1	A	5	DC	P-O5'	7.85	1.67	1.59
1	A	4	DT	O4'-C1'	7.58	1.51	1.42
1	A	1	DC	C3'-O3'	-7.42	1.34	1.44
1	A	6	DG	N9-C4	7.14	1.43	1.38
1	A	6	DG	N9-C8	-7.09	1.32	1.37
1	A	2	DG	P-O5'	6.95	1.66	1.59
1	A	5	DC	N3-C4	6.07	1.38	1.33
1	A	3	DA	N9-C8	-5.72	1.33	1.37
1	A	3	DA	C2'-C1'	5.70	1.58	1.52
1	A	2	DG	N9-C4	5.56	1.42	1.38
1	A	2	DG	C1'-N9	-5.37	1.39	1.47
1	A	6	DG	C4'-C3'	5.18	1.58	1.53
1	A	6	DG	C5-C4	-5.04	1.34	1.38

All (40) bond angle outliers are listed below:

Mol	Chain	Res	Type	Atoms	Z	Observed(°)	Ideal(°)
1	A	5	DC	O4'-C1'-N1	20.40	122.28	108.00
1	A	6	DG	C5-C6-N1	17.93	120.47	111.50
1	A	6	DG	N3-C2-N2	-15.72	108.89	119.90
1	A	2	DG	O4'-C1'-N9	15.51	118.85	108.00
1	A	6	DG	C6-N1-C2	-14.30	116.52	125.10
1	A	1	DC	C2-N3-C4	14.24	127.02	119.90
1	A	4	DT	O4'-C1'-N1	-14.21	98.05	108.00
1	A	1	DC	N3-C4-C5	-13.78	116.39	121.90
1	A	2	DG	C5-C6-N1	12.46	117.73	111.50
1	A	5	DC	C2-N3-C4	12.16	125.98	119.90
1	A	2	DG	N1-C6-O6	-12.08	112.65	119.90
1	A	2	DG	N3-C2-N2	-11.49	111.86	119.90
1	A	5	DC	N3-C4-C5	-11.21	117.42	121.90
1	A	5	DC	C5-C6-N1	10.70	126.35	121.00
1	A	6	DG	O4'-C4'-C3'	-10.27	99.84	106.00
1	A	2	DG	C6-N1-C2	-8.68	119.89	125.10
1	A	3	DA	O5'-P-OP1	-8.62	97.94	105.70
1	A	1	DC	O4'-C1'-N1	-8.40	102.12	108.00
1	A	1	DC	C5-C4-N4	8.33	126.03	120.20
1	A	6	DG	N1-C2-N2	8.24	123.61	116.20
1	A	6	DG	C5-C6-O6	-8.15	123.71	128.60
1	A	5	DC	O5'-P-OP1	-8.10	98.41	105.70
1	A	6	DG	N3-C4-N9	7.70	130.62	126.00
1	A	6	DG	N3-C4-C5	-7.15	125.03	128.60
1	A	6	DG	N1-C6-O6	-6.79	115.82	119.90
1	A	4	DT	C1'-O4'-C4'	-6.59	103.51	110.10
1	A	2	DG	N1-C2-N3	6.58	127.85	123.90
1	A	5	DC	O4'-C1'-C2'	-6.46	100.73	105.90
1	A	1	DC	N1-C2-N3	-6.40	114.72	119.20
1	A	5	DC	O3'-P-O5'	6.38	116.12	104.00
1	A	5	DC	C6-N1-C2	-6.38	117.75	120.30
1	A	4	DT	O5'-P-OP2	6.20	118.14	110.70
1	A	3	DA	O4'-C1'-N9	6.10	112.27	108.00
1	A	6	DG	N1-C2-N3	5.97	127.48	123.90
1	A	2	DG	O5'-P-OP2	-5.63	100.63	105.70
1	A	5	DC	N3-C4-N4	5.53	121.87	118.00
1	A	4	DT	O5'-P-OP1	-5.26	100.96	105.70
1	A	4	DT	N3-C2-O2	-5.21	119.17	122.30
1	A	4	DT	C6-C5-C7	-5.09	119.85	122.90
1	A	1	DC	P-O3'-C3'	5.03	125.74	119.70

There are no chirality outliers.

There are no planarity outliers.



## 5.2 Too-close contacts

In the following table, the Non-H and H(model) columns list the number of non-hydrogen atoms and hydrogen atoms in the chain respectively. The H(added) column lists the number of hydrogen atoms added and optimized by MolProbity. The Clashes column lists the number of clashes within the asymmetric unit, whereas Symm-Clashes lists symmetry related clashes.

Mol	Chain	Non-H	H(model)	H(added)	Clashes	Symm-Clashes
1	A	120	0	65	8	0
2	A	39	0	30	2	0
3	A	14	0	26	14	0
4	A	38	0	0	4	1
All	All	211	0	121	15	1

The all-atom clashscore is defined as the number of clashes found per 1000 atoms (including hydrogen atoms). The all-atom clashscore for this structure is 51.

All (15) close contacts within the same asymmetric unit are listed below, sorted by their clash magnitude.

Atom-1	Atom-2	Interatomic distance (Å)	Clash overlap (Å)
3:A:8:SPM:H111	4:A:23:HOH:O	1.85	0.77
1:A:4:DT:H6	3:A:8:SPM:H21	1.54	0.72
1:A:4:DT:C7	3:A:8:SPM:H132	2.26	0.65
1:A:4:DT:H71	3:A:8:SPM:H132	1.79	0.65
1:A:4:DT:C6	3:A:8:SPM:H21	2.34	0.62
2:A:7:DM6:C2	3:A:8:SPM:H71	2.30	0.61
3:A:8:SPM:H131	4:A:35:HOH:O	2.07	0.55
2:A:7:DM6:H2	3:A:8:SPM:H71	1.90	0.53
3:A:8:SPM:C11	4:A:23:HOH:O	2.54	0.48
1:A:4:DT:OP2	3:A:8:SPM:N1	2.48	0.47
1:A:5:DC:H5	3:A:8:SPM:N5	2.14	0.46
1:A:5:DC:H5	3:A:8:SPM:HN5	1.65	0.45
3:A:8:SPM:H42	3:A:8:SPM:HN11	1.39	0.44
3:A:8:SPM:H82	3:A:8:SPM:H122	2.01	0.41
1:A:1:DC:H5	4:A:18:HOH:O	2.03	0.41

All (1) symmetry-related close contacts are listed below. The label for Atom-2 includes the symmetry operator and encoded unit-cell translations to be applied.

Atom-1	Atom-2	Interatomic distance (Å)	Clash overlap (Å)
4:A:32:HOH:O	4:A:32:HOH:O[8_665]	2.18	0.02

## 5.3 Torsion angles [i](#)

### 5.3.1 Protein backbone [i](#)

There are no protein molecules in this entry.

### 5.3.2 Protein sidechains [i](#)

There are no protein molecules in this entry.

### 5.3.3 RNA [i](#)

There are no RNA molecules in this entry.

## 5.4 Non-standard residues in protein, DNA, RNA chains [i](#)

There are no non-standard protein/DNA/RNA residues in this entry.

## 5.5 Carbohydrates [i](#)

There are no carbohydrates in this entry.

## 5.6 Ligand geometry [i](#)

2 ligands are modelled in this entry.

In the following table, the Counts columns list the number of bonds (or angles) for which Mogul statistics could be retrieved, the number of bonds (or angles) that are observed in the model and the number of bonds (or angles) that are defined in the Chemical Component Dictionary. The Link column lists molecule types, if any, to which the group is linked. The Z score for a bond length (or angle) is the number of standard deviations the observed value is removed from the expected value. A bond length (or angle) with  $|Z| > 2$  is considered an outlier worth inspection. RMSZ is the root-mean-square of all Z scores of the bond lengths (or angles).

Mol	Type	Chain	Res	Link	Bond lengths			Bond angles		
					Counts	RMSZ	$\# Z  > 2$	Counts	RMSZ	$\# Z  > 2$
3	SPM	A	8	-	13,13,13	1.71	3 (23%)	12,12,12	0.81	0
2	DM6	A	7	-	41,43,43	2.80	14 (34%)	55,67,67	2.14	16 (29%)

In the following table, the Chirals column lists the number of chiral outliers, the number of chiral centers analysed, the number of these observed in the model and the number defined in the Chemical Component Dictionary. Similar counts are reported in the Torsion and Rings columns.

'-' means no outliers of that kind were identified.

Mol	Type	Chain	Res	Link	Chirals	Torsions	Rings
3	SPM	A	8	-	-	6/11/11/11	-
2	DM6	A	7	-	-	1/13/60/60	0/5/5/5

All (17) bond length outliers are listed below:

Mol	Chain	Res	Type	Atoms	Z	Observed(Å)	Ideal(Å)
2	A	7	DM6	O5-C5	9.26	1.39	1.22
2	A	7	DM6	O13-C13	7.01	1.32	1.21
2	A	7	DM6	O12-C12	6.54	1.34	1.22
2	A	7	DM6	C15-C12	-4.46	1.39	1.48
2	A	7	DM6	C17-C5	-4.22	1.37	1.47
2	A	7	DM6	C10-C19	-3.85	1.46	1.51
3	A	8	SPM	C9-N10	3.20	1.57	1.46
3	A	8	SPM	C11-N10	3.19	1.57	1.46
2	A	7	DM6	C16-C5	-3.02	1.40	1.47
2	A	7	DM6	O7-C1'	-2.90	1.34	1.41
2	A	7	DM6	C18-C12	-2.82	1.41	1.47
2	A	7	DM6	O4-C21	2.82	1.51	1.42
2	A	7	DM6	O4-C4	2.63	1.41	1.37
3	A	8	SPM	C6-N5	2.55	1.55	1.46
2	A	7	DM6	O7-C7	-2.44	1.40	1.44
2	A	7	DM6	C8-C9	2.31	1.58	1.53
2	A	7	DM6	C6'-C5'	2.16	1.56	1.51

All (16) bond angle outliers are listed below:

Mol	Chain	Res	Type	Atoms	Z	Observed(°)	Ideal(°)
2	A	7	DM6	O9-C9-C8	8.21	127.98	109.41
2	A	7	DM6	O13-C13-C9	-5.76	112.85	122.09
2	A	7	DM6	O7-C1'-C2'	4.40	116.91	108.41
2	A	7	DM6	O4'-C4'-C3'	4.10	117.32	109.81
2	A	7	DM6	O13-C13-C14	3.43	126.22	119.71
2	A	7	DM6	C4'-C3'-N3'	3.05	117.02	110.97
2	A	7	DM6	O12-C12-C15	-2.83	116.76	120.91
2	A	7	DM6	O5-C5-C16	-2.77	116.95	121.43
2	A	7	DM6	C21-O4-C4	-2.71	113.43	117.53
2	A	7	DM6	C14-C13-C9	2.55	120.64	117.73
2	A	7	DM6	C8-C7-C20	2.48	116.55	110.68
2	A	7	DM6	C17-C5-C16	2.46	122.35	118.12
2	A	7	DM6	C2'-C3'-C4'	-2.46	106.32	110.04
2	A	7	DM6	O5'-C5'-C6'	2.10	111.23	106.70

*Continued on next page...*

*Continued from previous page...*

Mol	Chain	Res	Type	Atoms	Z	Observed(°)	Ideal(°)
2	A	7	DM6	O4-C4-C3	-2.07	120.83	124.37
2	A	7	DM6	O5'-C1'-C2'	2.00	113.89	110.87

There are no chirality outliers.

All (7) torsion outliers are listed below:

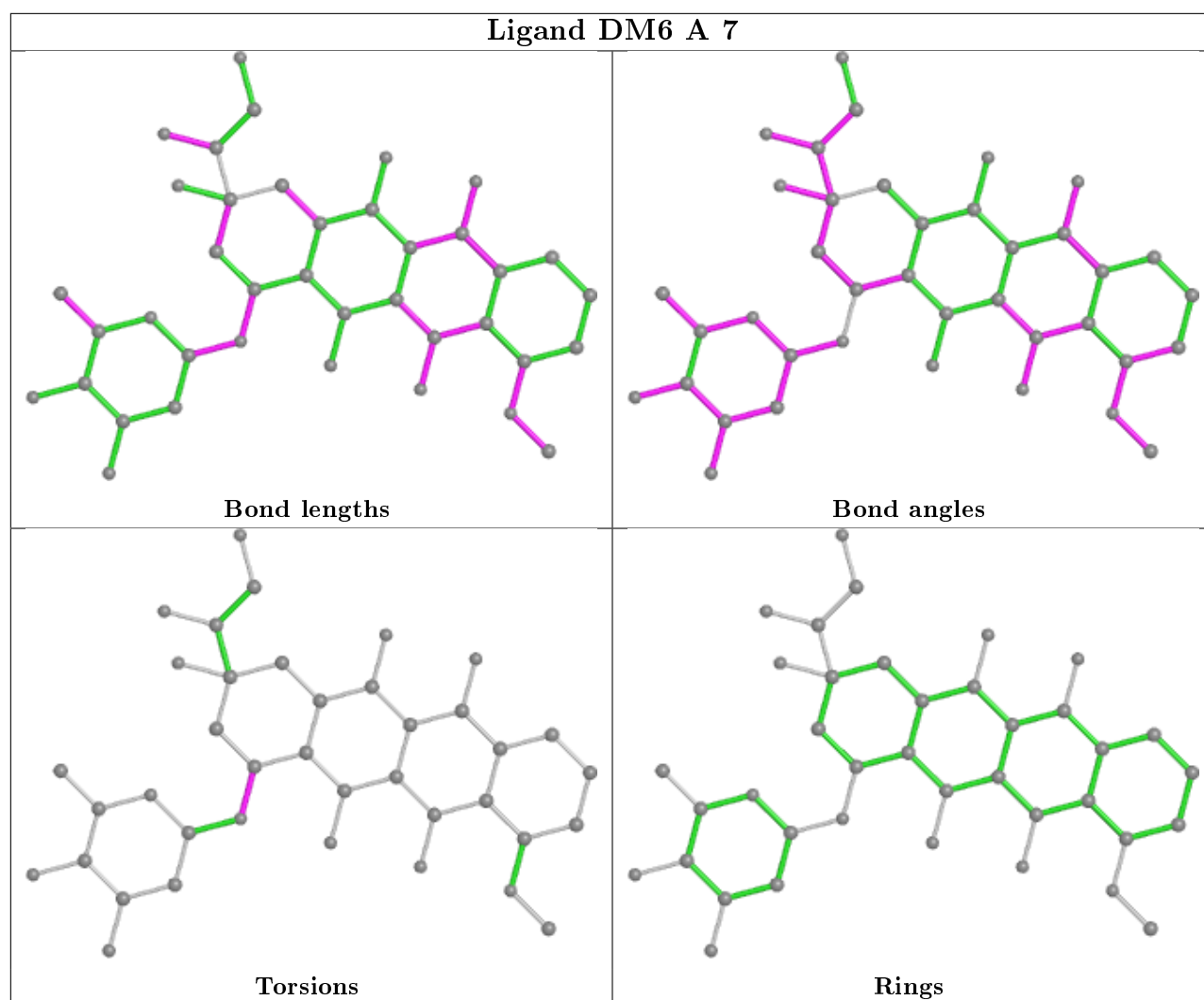
Mol	Chain	Res	Type	Atoms
3	A	8	SPM	C2-C3-C4-N5
3	A	8	SPM	C7-C6-N5-C4
3	A	8	SPM	C7-C8-C9-N10
3	A	8	SPM	C3-C4-N5-C6
3	A	8	SPM	N1-C2-C3-C4
3	A	8	SPM	C8-C9-N10-C11
2	A	7	DM6	C8-C7-O7-C1'

There are no ring outliers.

2 monomers are involved in 14 short contacts:

Mol	Chain	Res	Type	Clashes	Symm-Clashes
3	A	8	SPM	14	0
2	A	7	DM6	2	0

The following is a two-dimensional graphical depiction of Mogul quality analysis of bond lengths, bond angles, torsion angles, and ring geometry for all instances of the Ligand of Interest. In addition, ligands with molecular weight > 250 and outliers as shown on the validation Tables will also be included. For torsion angles, if less than 5% of the Mogul distribution of torsion angles is within 10 degrees of the torsion angle in question, then that torsion angle is considered an outlier. Any bond that is central to one or more torsion angles identified as an outlier by Mogul will be highlighted in the graph. For rings, the root-mean-square deviation (RMSD) between the ring in question and similar rings identified by Mogul is calculated over all ring torsion angles. If the average RMSD is greater than 60 degrees and the minimal RMSD between the ring in question and any Mogul-identified rings is also greater than 60 degrees, then that ring is considered an outlier. The outliers are highlighted in purple. The color gray indicates Mogul did not find sufficient equivalents in the CSD to analyse the geometry.



## 5.7 Other polymers [i](#)

There are no such residues in this entry.

## 5.8 Polymer linkage issues [i](#)

There are no chain breaks in this entry.

## 6 Fit of model and data

### 6.1 Protein, DNA and RNA chains

EDS was not executed - this section is therefore empty.

### 6.2 Non-standard residues in protein, DNA, RNA chains

EDS was not executed - this section is therefore empty.

### 6.3 Carbohydrates

EDS was not executed - this section is therefore empty.

### 6.4 Ligands

EDS was not executed - this section is therefore empty.

### 6.5 Other polymers

EDS was not executed - this section is therefore empty.